

North Arkansas Quail Focal Landscape

Regional Conservation Partnership Program (RCPP)



The Regional Conservation Partnership Program (RCPP) is a comprehensive and flexible program that uses partnerships to stretch and multiply conservation investments and reach conservation goals on a regional or watershed scale.

Project Overview

The North Arkansas Quail Focal Landscape RCPP Project is a voluntary program that provides financial and technical assistance to agricultural producers for addressing water quality concerns in Baxter, Benton, Boone, Carroll, Fulton, Izard, Madison, Marion, Newton, Randolph, Searcy, Sharp, Stone, and Washington counties.

Primary Resource Concern

Habitat for Wildlife and Invertebrate.

Project Goals

Early successional habitat has significantly decreased/deteriorated over the last 50-100 years, mainly due to changing land use. This loss of plant diversity and cover has caused declines in northern bobwhite (*Colinus virginianus*) and numerous songbirds (Hunter et al. 2001). In specific, bobwhites in the natural state have declined nearly 6% from 2002-2012 according to the breeding bird survey data (Sauer et al. 2014). The partners listed within this proposal would like to utilize the Environmental Quality Incentives Program (EQIP) and its practices to create early successional habitat to benefit quail, pollinators, and other wildlife in northern Arkansas. The early succession habitat restoration objectives of this project align with several initiatives including: the National Bobwhite Conservation Initiative, the Arkansas Wildlife Action Plan, Partners in Flight Landbird Action Plan, and the Arkansas Strategic Quail Plan.

Conservation Practice Funding

Funding will be available to eligible landowners through EQIP. NRCS will provide financial assistance for a systems approach using approved conservation practices for the purpose of addressing resource concerns. Land and producer eligibility, adjusted gross income, and all other program criteria for participation must be met to participate in this initiative. Agricultural lands are eligible for enrollment in the initiative. Additional financial assistance is available through Arkansas Game and Fish Commission.

Approved Conservation Practices

327—Conservation Cover—Pollinator/monarch scenarios only

338—Prescribed Burning

647—Early Successional Habitat Development and Management

394—Firebreak

512—Forage and Biomass Planting (Native Perennial 2 or more Scenario Only)

612—Tree/Shrub Establishment—shrub only

490—Tree/Shrub Site Prep—shrub only

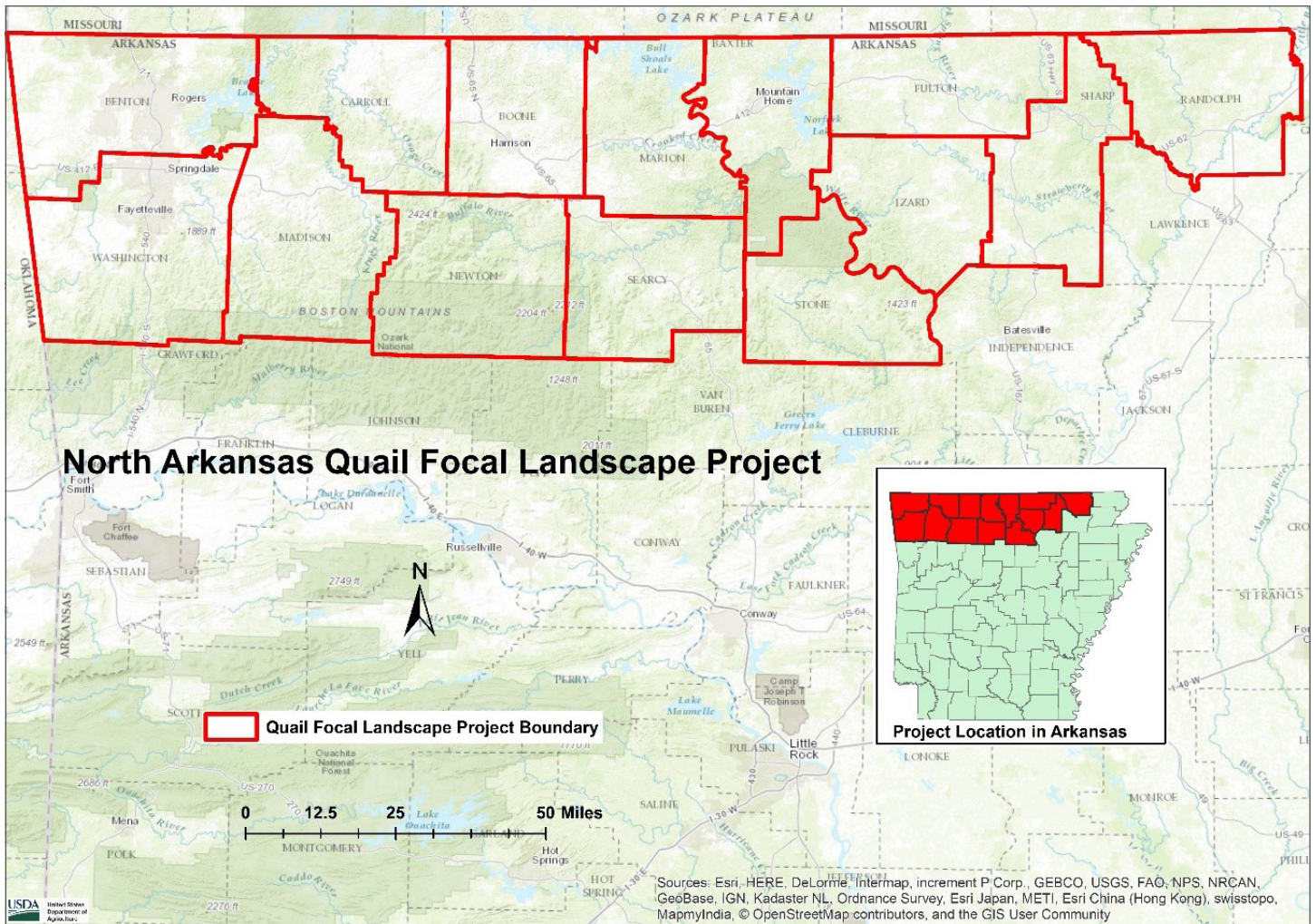
666—Forest Stand Improvement

649—Structure for Wildlife—Large Brush Piles Only

381—Silvopasture—Thin Forest and/or Establish Native Grass Scenarios Only

Other supporting practices may also be eligible. Contact your local NRCS office for more information.





How to Apply for RCPP

NRCS and associated conservation partners will deliver this program collaboratively. Applications may be obtained and filed with NRCS at:

Baxter and Marion County
 Mountain Home Field Service Center
 406 West Wade Avenue
 Mountain Home, AR 72653
 (870) 425-3527 x3

Carroll County
 Berryville Field Service Center
 909C Freeman Switch Road
 Berryville, AR 72616
 (870) 423-2638 x3

Madison County
 Huntsville Field Service Center
 479 North Parrott Drive
 Huntsville, AR 72740
 (479) 738-6321 x3

Sharp County
 Ash Flat Field Service Center
 21C Court Road
 Ash Flat, AR 72513
 (870) 994-7335, ext. 3

Benton County
 Bentonville Field Service Center
 1401 NE McClain Road, Suite 5
 Bentonville, AR 72712
 (479) 505-4085

Fulton County
 Salem Field Service Center
 236 Byron Road
 Salem, AR 72576
 (870) 895-3201 x3

Randolph County
 Pocahontas Field Service Center
 308 Camp Road
 Pocahontas, AR 72455
 (870) 892-3623, ext. 3

Stone County
 Mountain View Field Service Center
 207 Martin Street
 Mountain View, AR 72560
 (870) 269-3726 x3

Boone and Newton County
 Harrison Field Service Center
 402 N. Walnut Street, Suite 125
 Harrison, AR 72601
 (870) 741-8600 x3

Izard County
 Melbourne Field Service Center
 1357 East Main, Room 101
 Melbourne, AR 72556
 (870) 368-4413 x3

Searcy County
 Marshall Field Service Center
 201 Factory Road
 Marshall, AR 72650
 (870) 448-3184 x3

Washington County
 Fayetteville Field Service Center
 2898 Point Circle, #2
 Fayetteville, AR 72704
 (479) 521-4520

ARKANSAS

Natural
 Resources
 Conservation
 Service

