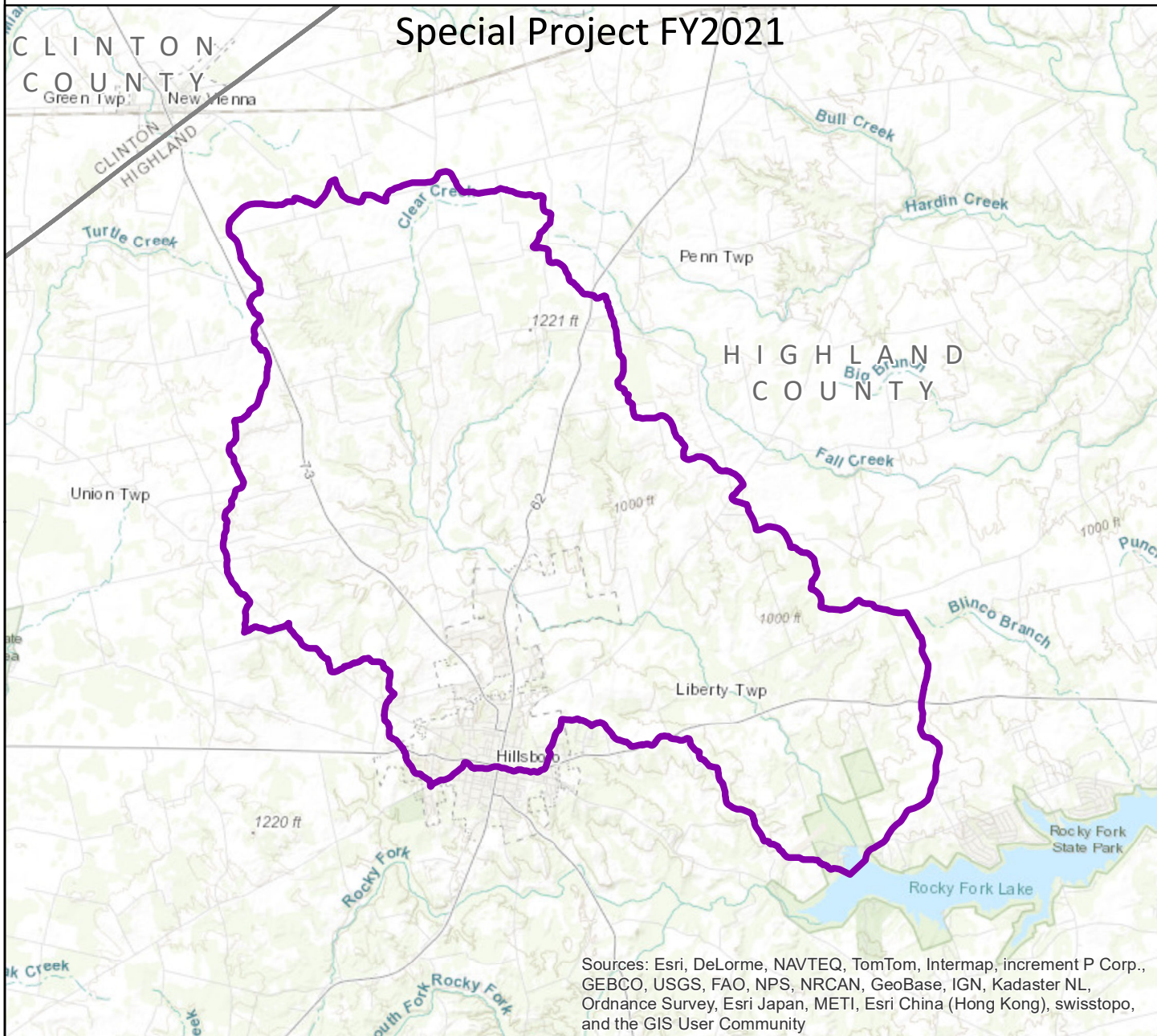




Clear Creek Water Quality and Wildlife Habitat

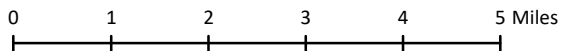
Special Project FY2021



Sources: Esri, DeLorme, NAVTEQ, TomTom, Intermap, increment P Corp., GEBCO, USGS, FAO, NPS, NRCAN, GeoBase, IGN, Kadaster NL, Ordnance Survey, Esri Japan, METI, Esri China (Hong Kong), swisstopo, and the GIS User Community



-  Project Area
-  County Boundaries



Terry J. Cosby, USDA-NRCS State Conservationist

Location within Ohio

