

# 2021 Mississippi River Basin Healthy Watersheds Initiative

## Candy Creek MRBI Fact Sheet



### Overview

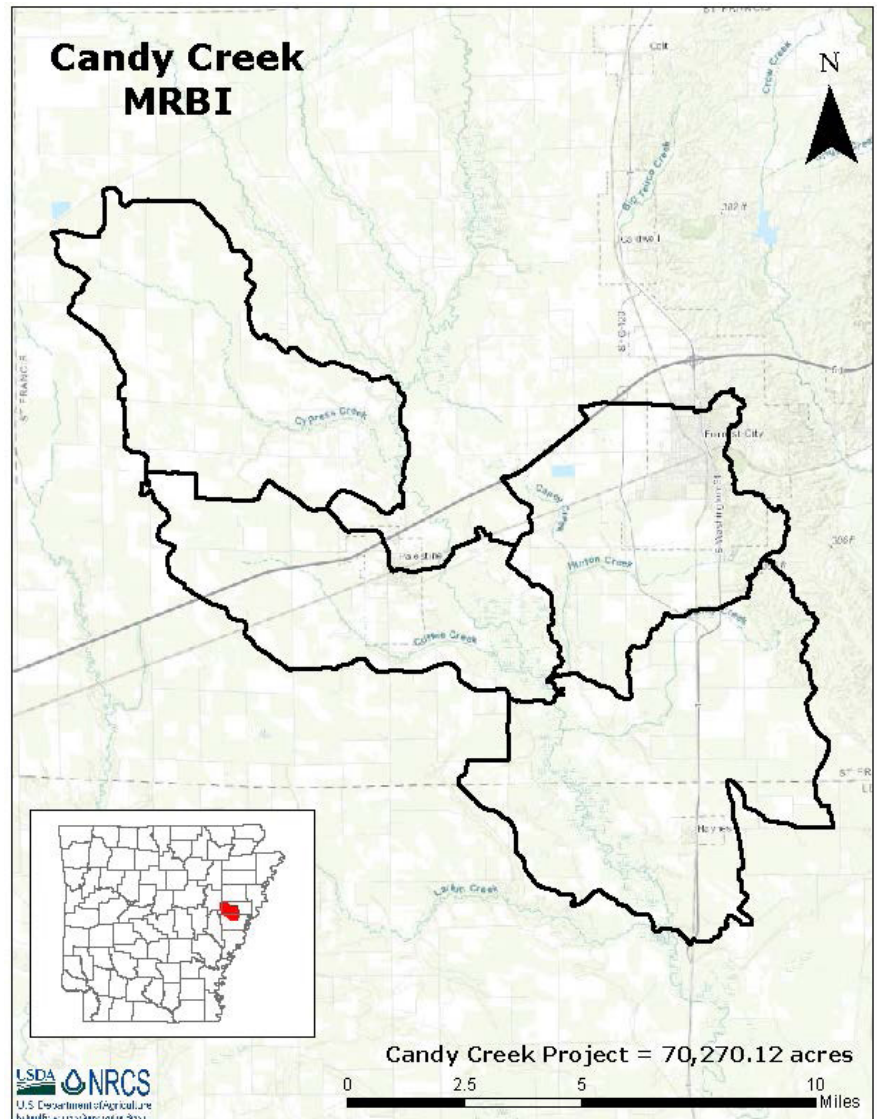
The Candy Creek Mississippi River Basin Healthy Watershed Initiative (MRBI) Project is a voluntary program that provides financial and technical assistance to agricultural producers for addressing water quality concerns in the following watersheds: Unnamed, Candy-L'Anguille River, Coffee-L'Anguille River and Cypress-L'Anguille River. These watersheds lie in portions of St. Francis and Lee counties. The project area covers 70,270 acres.

### Resource Concerns Addressed by the Project

- Water Quality Degradation—Excessive sediment in surface water, field sediment, nutrient and pathogen loss
- Water Quality Degradation—Excessive nutrient in surface water, field sediment, nutrient and pathogen loss, storage and handling

### Conservation Practice Funding

The life of the project is from 2021 through 2024. Each year of the project, the USDA's Natural Resources Conservation Service (NRCS) will provide financial assistance through the Environmental Quality Incentive Program (EQIP) for a system approach using approved conservation practices to address water quality resource concerns. Land and producer eligibility, adjusted gross income, and all other program criteria for participation must be met to participate in this initiative. Agricultural lands are eligible for enrollment in the initiative.



ARKANSAS

**Natural  
 Resources  
 Conservation  
 Service**

[nrcs.usda.gov/](https://nrcs.usda.gov/)



## Project Goals

- 25% of priority field acres in the project area will be treated through implementing conservation plans and contracts.
- Increases water quality benefits through reducing sediment/nutrient loading by 25% in the project area.
- A documented savings of water for basic irrigation, water management and associated supporting practices will be 10-25% in the life of the project.

## Approved Conservation Practices

- 328-Conservation Crop Rotation
- 329-Conservation Tillage-No-till
- 340-Cover Crop
- 345-Conservation Tillage-Mulch till
- 327-Conservation Cover
- 378-Pond
- 382-Fence
- 587-Structure for Water Control
- 533-Pumping Plant
- 484-Mulching
- 436-Irrigation Reservoir
- 430-Irrigation Pipeline
- 443-Irrigation System, Surface & Subsurface
- 449-Irrigation Water Management
- 447-Tailwater Recovery
- 464-Irrigation Land Leveling
- 595-Integrated Pest Management.
- 590-Nutrient Mgmt.
- 512-Forage and Biomass Planting
- 516-Livestock Pipeline
- 528-Prescribed Grazing
- 561-Heavy Use Area Protection
- 614-Watering Facility
- 646-Shallow Water Development and Management

## How to Apply for MRBI

NRCS and associated conservation partners will deliver this program collaboratively. Applications may be obtained and filed with NRCS at:

St. Francis County  
Forrest City FSC  
4401 North Washington  
Street, Suite A  
Forrest City, AR 72335  
(870) 633-3055, ext.3

Lee County  
Marianna FSC  
30 South Poplar Street  
Marianna, AR 72360  
(870) 295-5211, ext. 3

If you need more information about MRBI, please contact one of the above offices or visit the NRCS Arkansas Web site at: [www.ar.nrcs.usda.gov](http://www.ar.nrcs.usda.gov)

## Partners

- St. Francis County Conservation District
- Lee County Conservation District
- University of Arkansas Extension
- Tri County
- Farmers Association
- Greenway Equipment
- Nutrien
- Stine Seed Company
- County Line Irrigation
- East Arkansas Enterprise Community
- First National Bank of Eastern Arkansas