

FY21 National Water Quality Initiative (NWQI) Brush Creek - Roberts Creek



Overview

The Brush Creek - Roberts Creek National Water Quality Initiative (NWQI) Project is a voluntary program that provides financial and technical assistance to agricultural producers for addressing water quality concerns in this watershed located in portions of Washington and Madison counties. The project area covers 49,286 acres.

Primary Resource Concerns Addressed by the Project

Field Sediment, Nutrients, and Pathogen Loss

- Nutrients Transported to Surface Water
- Sediment Transported to Surface Water

Project Goals

- The % of critical source areas with conservation by the end of the project should be a value of 15% determined through the assessment/planning process. Critical source areas are defined as a 1/4 mile distance from primary streams.
- Achieve total load reductions of 15% of tons of sediment by 2024 as compared to baseline to achieve NRCS and partner goals.
- Pasture condition scores will improve from "fair to worse" to "good to excellent" condition on 50% of contracted pasture acres.

Conservation Practice Funding

Funding will be available to eligible landowners through the Environmental Quality Incentives Program (EQIP). NRCS will provide financial assistance for a systems approach using approved conservation practices for the purpose of addressing resource concerns. Land and producer eligibility, adjusted gross income, and all other program criteria for participation must be met to participate in this initiative. Agricultural lands are eligible for enrollment in the initiative.

Approved Conservation Practices

Core Practices

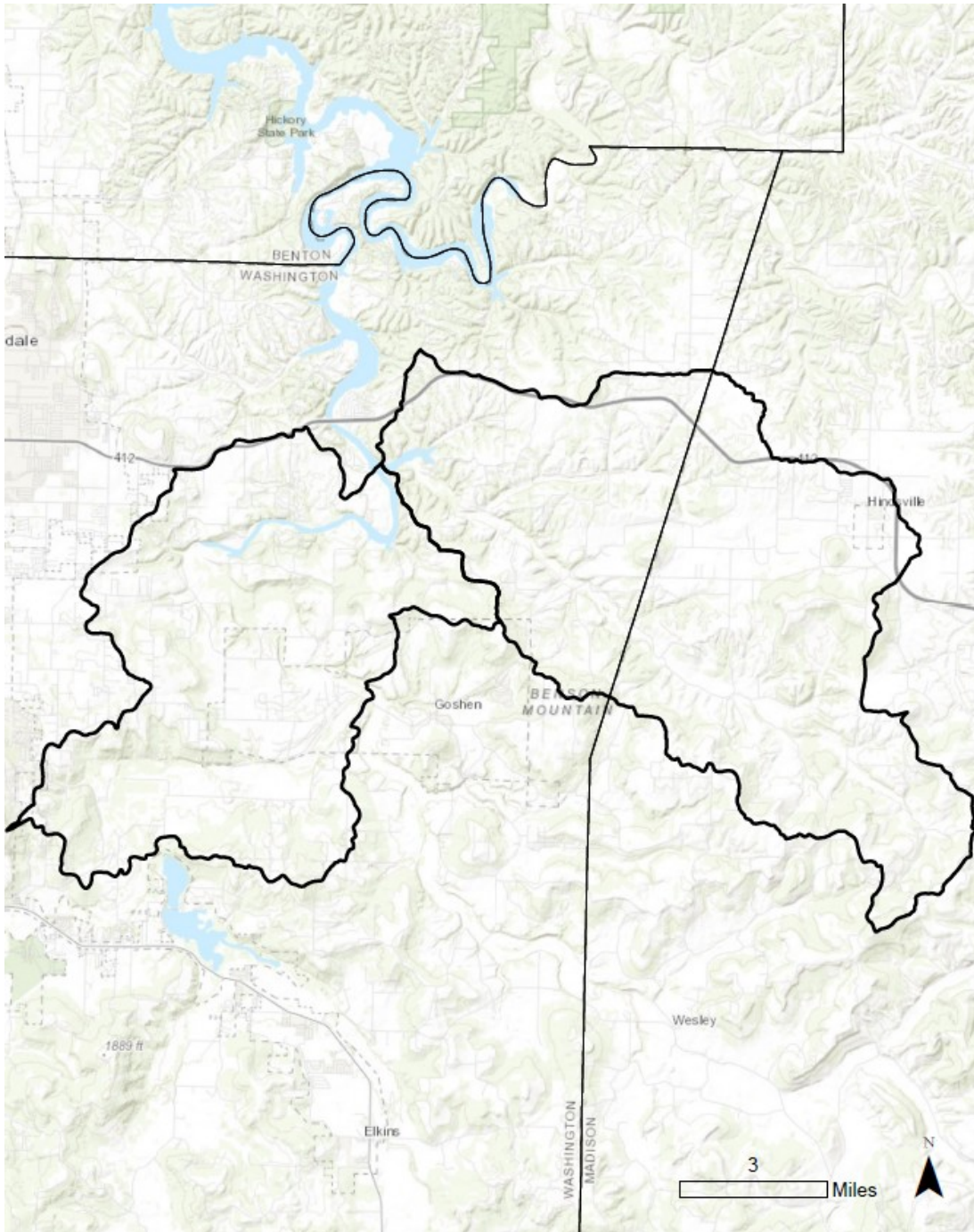
- 313: Waste Storage Facility
- 316: Animal Mortality Facility
- 327: Conservation Cover
- 342: Critical Area Planting
- 390: Riparian Herbaceous
- 391: Riparian Forest Buffer
- 528: Prescribed Grazing
- 561: Heavy Use Area Protection
- 580: Streambank and Shoreline Protection
- 590: Nutrient Management
- 612: Tree/Shrub Establishment

Supporting Practices

- 201: Edge of Field Monitoring Data Collection and Evaluation
- 202: Edge of Field Monitoring System Installation
- 314: Prescribed Burning
- 315: Herbaceous Weed Treatment
- 367: Roofs and Covers
- 378: Pond
- 382: Fence
- 484: Mulching
- 490: Tree/Shrub Site Preparation
- 512: Forage and Biomass
- 516: Livestock Pipeline
- 533: Pumping Plant
- 558: Roof Runoff Structure
- 578: Stream Crossing
- 591: Amend for the Treatment of Ag Waste
- 614: Watering Facility
- 642: Water Well
- 666: Forest Stand Improvement



Brush Creek - Roberts Creek NWQI Project Area



How to Apply for NWQI

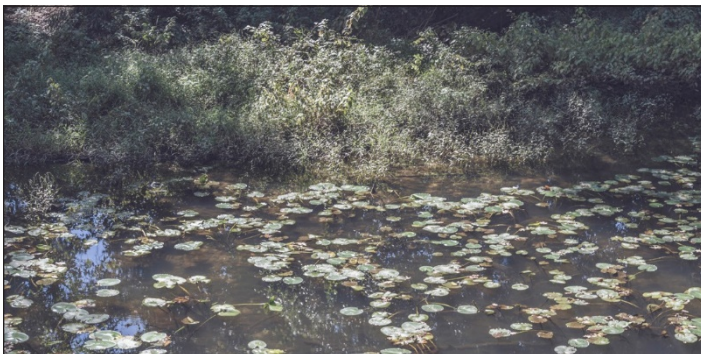
NRCS and associated conservation partners will deliver this program collaboratively. Applications may be obtained and filed with NRCS at:

Washington County
Fayetteville Field Service Center
2898 Point Circle, Suite 3,
Fayetteville, AR (479)
521-4520 ext 3

Madison County Huntsville
Field Service Center
479 N Parrot Dr, Huntsville,
AR (479) 738-6321 ext 3

For More Information

Questions about this program can be directed to State Water Quality Specialist Roger Cousins at roger.cousins@usda.gov or your local USDA NRCS field service center.



Conservation practices will address improving habitat for fish, wildlife, and water quality within the watershed.



Pastureland within the watershed and poultry farms can voluntarily be treated with conservation practices to reduce sediment and nutrient loss.