

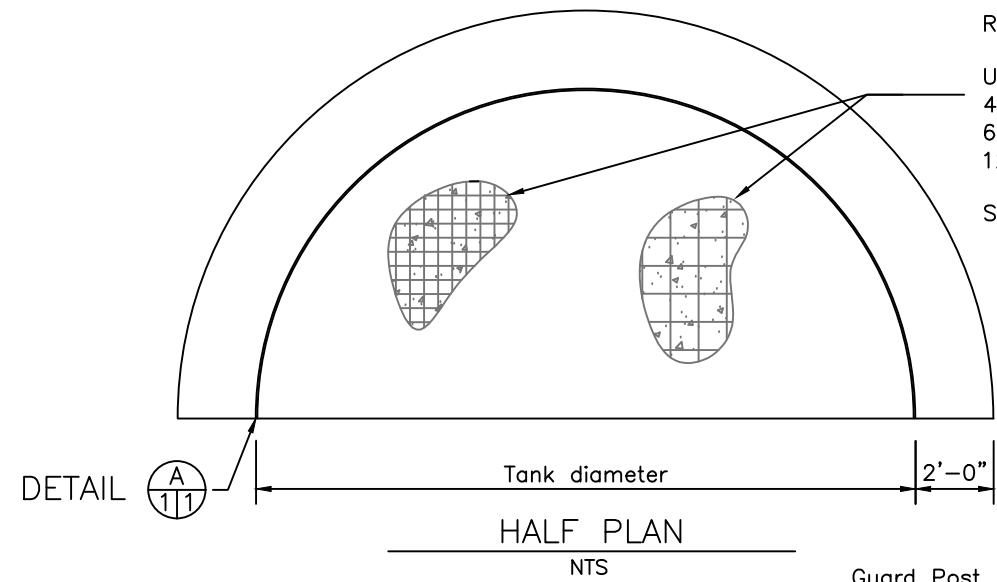
CONSTRUCTION NOTES

- 1) The NRCS Technician shall approve the subgrade preparation, forms and reinforcing steel placement before concrete is poured.
- 2) Forms shall not be removed before 24 hours have elapsed after placement of concrete.
- 3) Concrete shall be prevented from drying a minimum of 5 days after it is placed. Exposed surfaces must be kept continuously moist for the entire period or treated by using a curing compound.
- 4) Joints and edges on surfaces that will be exposed to view shall be chamfered or finished with molding tools.
- 5) Plastic chairs shall be used to support the rebar or mesh supports for the welded wire fabric.
- 6) Steel plate or corrugated sheet iron shall be galvanized, stainless or factory plastic coated or epoxy coated. Minimum thickness shall be 16 gauge for diameters up to 30' and 14 gauge for diameters up to 60'. Top edge reinforcement is not required for corrugated steel, 12 gauge or heavier.
- 7) The wall shall not be in contact with reinforcing steel. Concrete chairs or non-electrical conducting materials such as asphalt mastic shall be used to accomplish separation requirements.
- 8) Concrete shall be min. 3000 psi at 28 days with air entrained at 4-7% by volume. Mix design shall be in accordance with ASTM C94.
- 9) Provide Inlet and outlet plumbing protection.

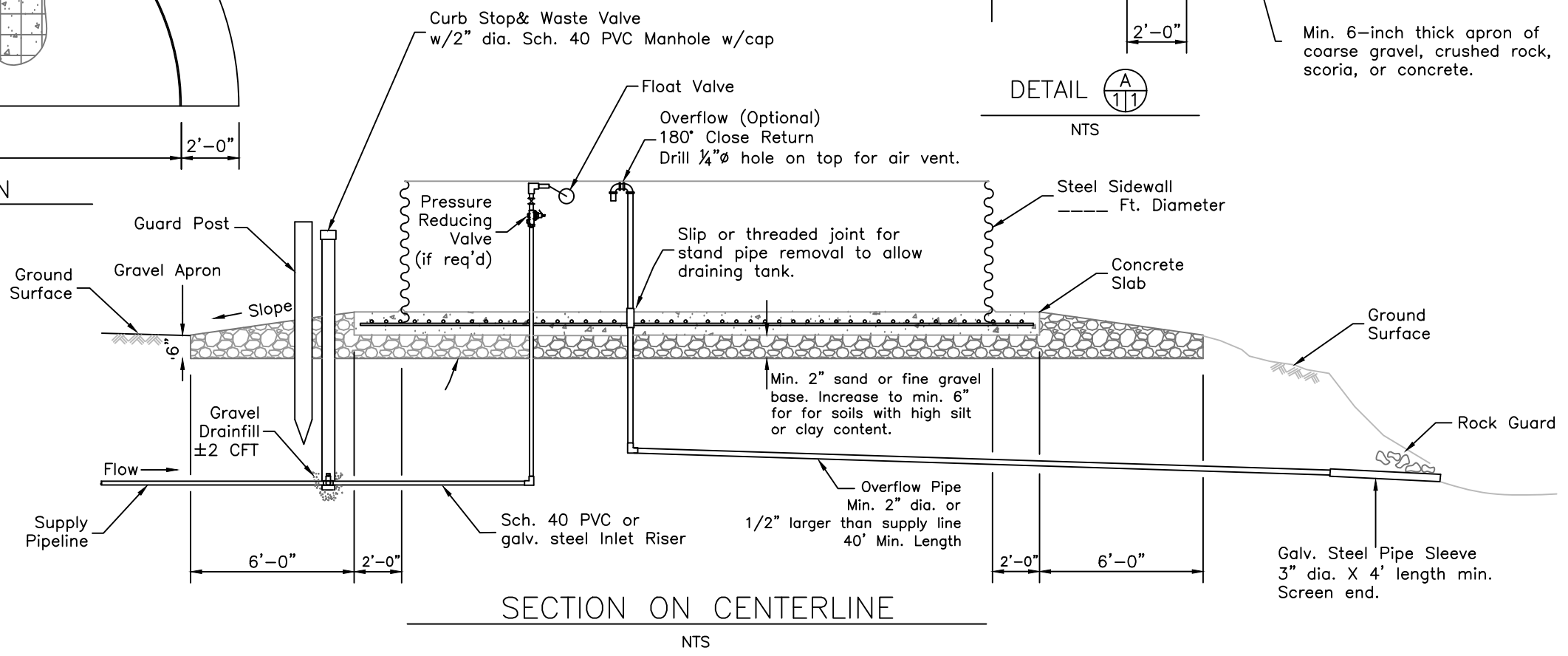
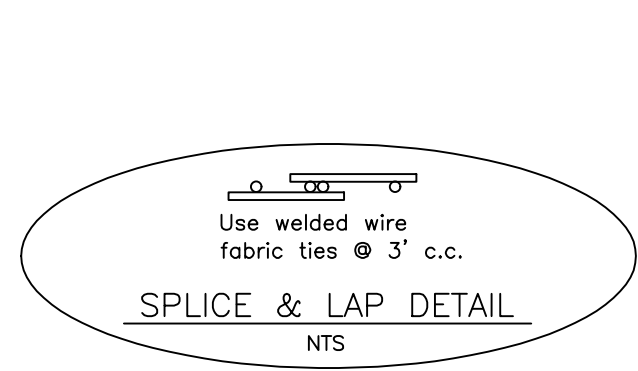
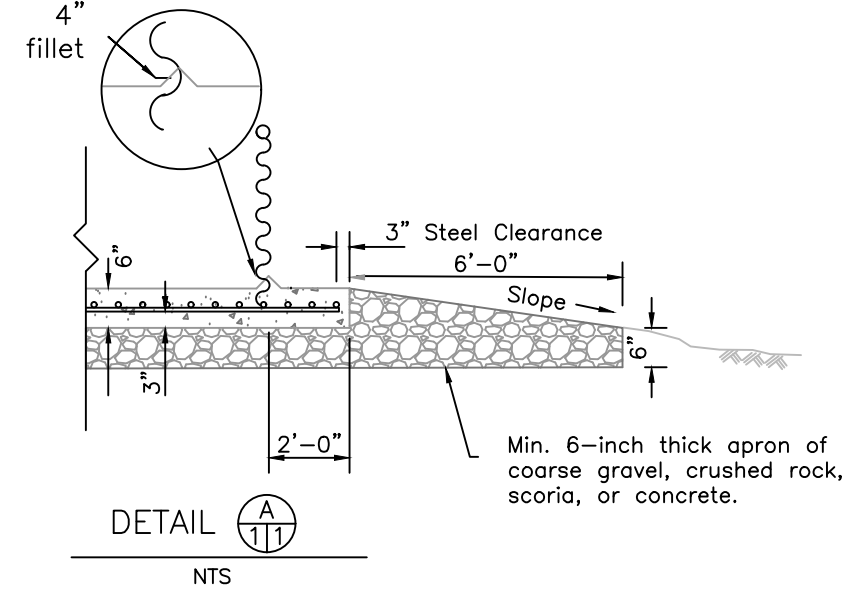
ESTIMATED MATERIALS by TANK DIAMETER								
DIA. (ft.)	GAGE (min.)	CAPACITY (gal.)		CONCRETE (cu. yd.)	REINFORCEMENT		GRAVEL (cu. yd.)	
		PER INCH DEPTH			3/8" BAR (lb)			
10	16	48.9	1028	2.9	138	131	2.9	4.2
12	16	70.5	1480	3.7	180	172	3.7	4.7
14	16	95.9	2015	4.7	219	217	4.7	5.1
16	16	125.3	2632	5.8	288	268	5.8	5.6
18	16	158.5	3331	7.0	346	324	7.0	6.1
20	16	195.7	4112	8.4	387	385	8.4	6.5
22	16	236.8	4976	9.8	459	451	9.8	7.0
24	16	281.8	5922	11.4	555	524	11.4	7.4
25	16	305.8	6426	12.2	580	562	12.2	7.7
30	16	440.4	9553	16.8	852	772	16.8	8.8
40	14	782.9	16,450	28.2	1411	1293	28.2	11.2
50	14	1223.2	25,702	42.4	2111	1948	42.4	13.5
60	14	1761.4	37,011	59.6	2975	2735	59.6	15.8

Note: Waste trim not included in welded fabric quantities.

Note: Wildlife escape ramps are required by NRCS to be installed on all stock water tanks. Refer to attached drawings for specific details.



Reinforcing Steel: Min. 60 Grade Steel
Use #3 bars, (3/8" dia.) at 10" c.c. or 4"x4" W4.5xW4.5 welded wire fabric, or 6"x6" W6.5xW6.5 welded wire fabric, or 12"x12" W14xW14 welded wire fabric
Splice length is 12" minimum.



Date _____
Designed _____
Checked _____
Approved _____

CORRUGATED STEEL STOCKWATER TANK WITH CONCRETE BOTOM
OWNER: _____
COUNTY: _____



Drawing Number ND-DWG-108
Date _____
Sheet of _____