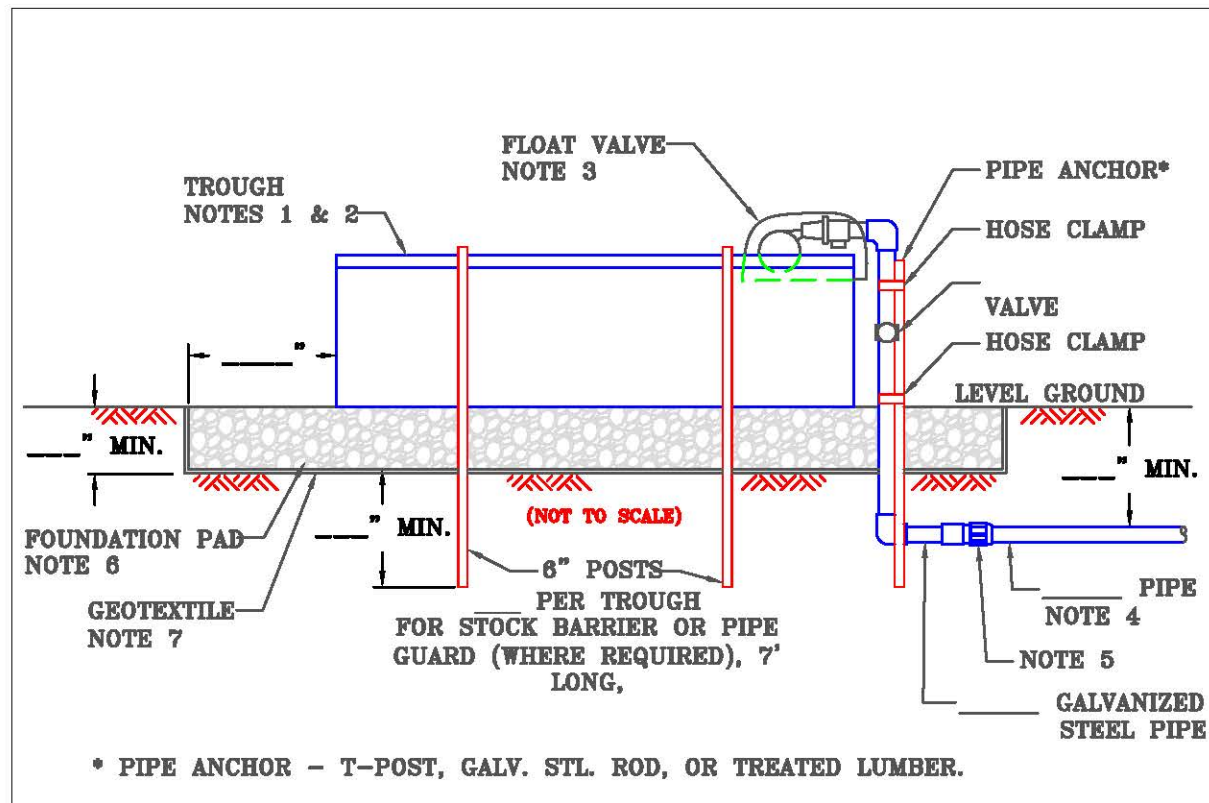


ADD DRAWING DETAILS HERE FOR:

- * FLOAT VALVES
- * PIPE INLET DETAILS
- * OUTLET PIPE DETAILS (WHERE APPLICABLE)
- * OVERFLOW DETAILS TO STABLE OUTLET
- * TROUGH DRAIN TO STABLE OUTLET
- * HEAVY USE AREA PROTECTIONS AROUND TROUGHS
- * WILDLIFE ESCAPE
- * STOCK BARRIER
- * PIPE GUARD

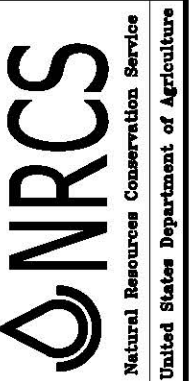


1. TROUGH VOLUME: _____
2. TROUGH MATERIAL: _____
3. FLOAT VALVE TYPE: _____
4. PIPE MATERIAL: _____
5. PIPE CONNECTOR: _____
6. FOUNDATION MATERIAL: _____
AND COMPACTION REQUIREMENTS: _____
7. GEOTEXTILE MATERIAL: _____
8. CONSTRUCTION SHALL MEET NRCS WATERING FACILITY SPECIFICATION CODE 614
9. CONSTRUCTION SHALL MEET NRCS HEAVY USE AREA PROTECTION SPECIFICATION CODE 561

Job Class ()

Designed _____
 Drawn _____
 Checked _____
 Approved _____
 Title _____

Plumbing & Details



File Name _____
 Drawing No. _____
 Sheet _____ of _____