

Conservation Practice Standards (CPS) Updates

FARM PRODUCTION AND CONSERVATION
FSA | NRCS | RMA | Business Center

New Guidance on Conservation Practice Standard (CPS) Reviews

- **The Federal Register is the official time and place for comments on conservation practice standards. (No Change)**



New Guidance on Conservation Practice Standard (CPS) Reviews

- But NRCS has new guidance to include partners in initial reviews of CPS that are being updated.
 - This is before CPS go to the Federal Register and is not considered an official comment. Note that comments may not be incorporated.
- The intent is to streamline reviews so that many comments are captured before the CPS is placed on the Federal Register.



WA Process for Initial Reviews of a CPS

- The State Resource Conservationist (SRC) (Bobby Evans) and the State Conservation Engineer (SCE) (Lynelle Knehans) are responsible for requesting comments on all CPS
- An email is sent to STAC and WATCAC with the draft CPS and a due date.
 - All comments should be sent to the SRC and the SCE by the due date to include in response to NRCS Headquarters.
 - Not all comments will be incorporated into the CPS.



Current Standards Out for Review

CPS Code	Conservation Practice Standard Name
226	CEMA Waste Facility Site Suitability and Feasibility Assessment
412	Grassed Waterway
527	Sinkhole Treatment
610	Saline and Sodic Soil Management

Comments due February 20, 2026

Again: The Federal Register is the only official response for the public.

- Partners are encouraged to review all Conservation Practice Standards on the Federal Register as they are posted



649 Updates – Structures for Wildlife

Statewide implementation requirements (IR) guidance being developed for 649:

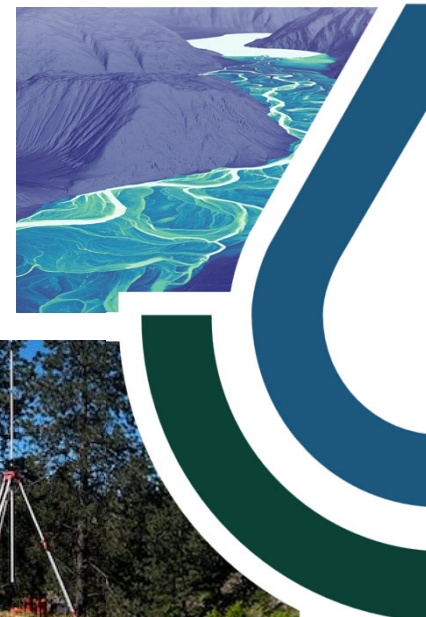
- ❖ a general IR form for the practice that will be used whenever 649 is planned/contracted
- ❖ individual Practice Specification documents for the various kinds of structures (nest boxes, perch poles, wildlife brush piles, escape ramps, etc), specifying key criteria for each

Conservation Practice Standards

Comments and questions on Conservation Practice Standards (CPS) in Washington can be sent to

Bobby Evans (robert.d.evans@usda.gov) and
Lynelle Knehans (lynelle.knehans@usda.gov)



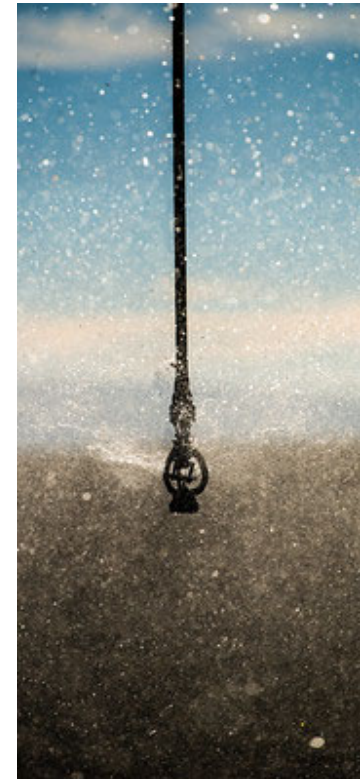


National Engineering Manual (NEM) WA Supplement Updates

FARM PRODUCTION AND CONSERVATION
FSA | NRCS | RMA | Business Center

National Engineering Manual (NEM) Supplements for WA

- Reviewing all Supplements:
 - June 2025 – Completed
 - 5 updated Supplements and 1 new Supplement
 - January 2026 – 1 new Supplement
 - WA 540 Supplement – Field Surveys
 - Required supplement describing format for Survey Grade GPS field surveys
 - Includes required notes, type of data collection and precisions and accuracy requirement.



Future Updates

	materials		June 2017	June 2020	material requirements.
510	Planning		June 2017	October 2020	<ul style="list-style-type: none"> AFO/CAFO Planning ENG TN #23 requirements
511	Design	Subpart A - Procedures	June 2017	January 2018	<ul style="list-style-type: none"> Permit preparation and application assistance Design folder requirements Inspection Plan requirements Non-TSP, Contracted engineering design (ie: WSCC PA)
		Subpart B - Documentation	June 2017	January 2018	
		Subpart C - Instrumentation	June 2017	n/a	
512	Construction	Subpart A - General Information	June 2017	n/a	
		Subpart B - Preconstruction Activities	June 2017	n/a	

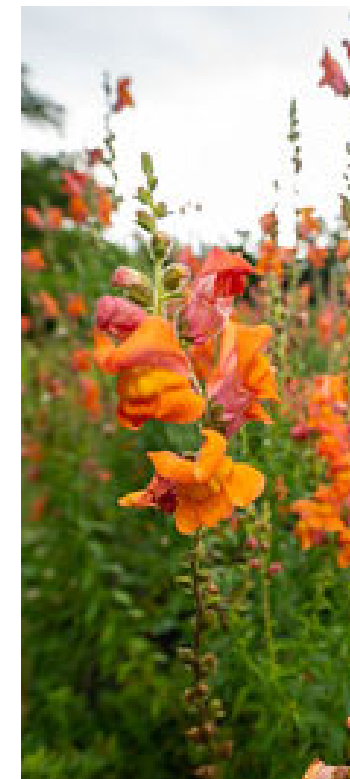
		Subpart C - Evaluation of Construction Materials	June 2017	January 2018	<ul style="list-style-type: none"> Used materials Prequalification of Materials Quality Assurance Procedures Federally constructed projects.
		Subpart D - Quality Assurance Activities	June 2017	January 2018	<ul style="list-style-type: none"> Specialty Equipment Job Diaries
		Subpart E - Equipment, Records and Coordination	June 2017	January 2018	<ul style="list-style-type: none"> Job Class 1-4 as-built requirements.
		Subpart F - As-Built Drawings	June 2017	January 2018	<ul style="list-style-type: none"> PPE
		Subpart G - Safety	June 2017	January 2018	<ul style="list-style-type: none"> Storm Water Pollution Prevention Plan (SWPPP)
520	Soil and Water Resource Development	Subpart A - Erosion and Sediment Control	June 2017	January 2018	<ul style="list-style-type: none"> WA Permitted structure policy Review and approval by SO required.
		Subpart B - Flood Plane Management	June 2017	n/a	
		Subpart C - Dams	June 2017	January 2018	



Future Updates

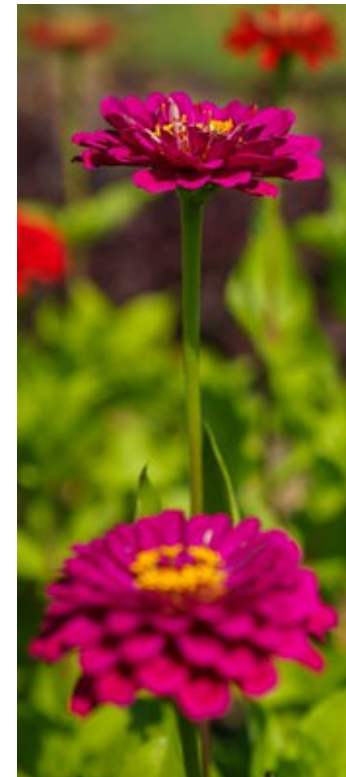
522	Water Supply and Conservation	Reservoir Operations Guide or Snowmelt	June 2017	January 2018	<ul style="list-style-type: none"> WA State Snow Survey policy
523	Irrigation		June 2017	January 2018	<ul style="list-style-type: none"> WA State Irrigation Guide.
524	Drainage		June 2017	January 2018	<ul style="list-style-type: none"> List of drainage assessment references
529	Reserved				
530	Hydrology	Subpart A - Hydrologic Investigations	June 2017	n/a	
		Subpart B - Hydrologic Procedures and Criteria	June 2017	January 2018	<ul style="list-style-type: none"> List of acceptable hydrologic procedures.

542	Drawings Specifications	Subpart A - Construction Specifications	June 2017	January 2018	<ul style="list-style-type: none"> WA Construction and Material Specifications
		Subpart B - Engineering Services Specifications	June 2017	n/a	
		Subpart C - Exhibits	June 2017	n/a	
543	Materials		June 2017	n/a	
544	Equipment		June 2017	January 2018	<ul style="list-style-type: none"> Calibration, Maintenance, Transporting, Use and Storage of surveying equipment.

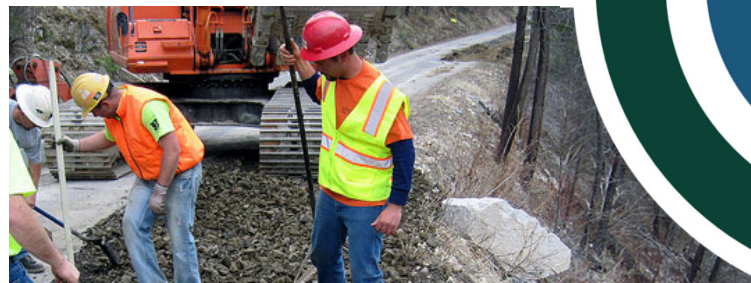


Follow Up

- Draft supplements are available upon request for reviews
- Current Supplements can be found
 - <https://www.nrcs.usda.gov/state-offices/washington/washington-engineering>
 - At the bottom of the page
- Comments on any Supplements can be sent to lynelle.knehans@usda.gov



Questions?



FARM PRODUCTION AND CONSERVATION
FSA | NRCS | RMA | Business Center