



Natural Resources Conservation Service  
U.S. DEPARTMENT OF AGRICULTURE

# Wildlife Subcommittee updates

Peter McBride, State Wildlife Biologist



FARM PRODUCTION AND CONSERVATION  
FSA | NRCS | RMA | Business Center



Natural Resources Conservation Service  
U.S. DEPARTMENT OF AGRICULTURE

# Update on NRCS-WA Sage Grouse Initiative (SGI) Priority Areas

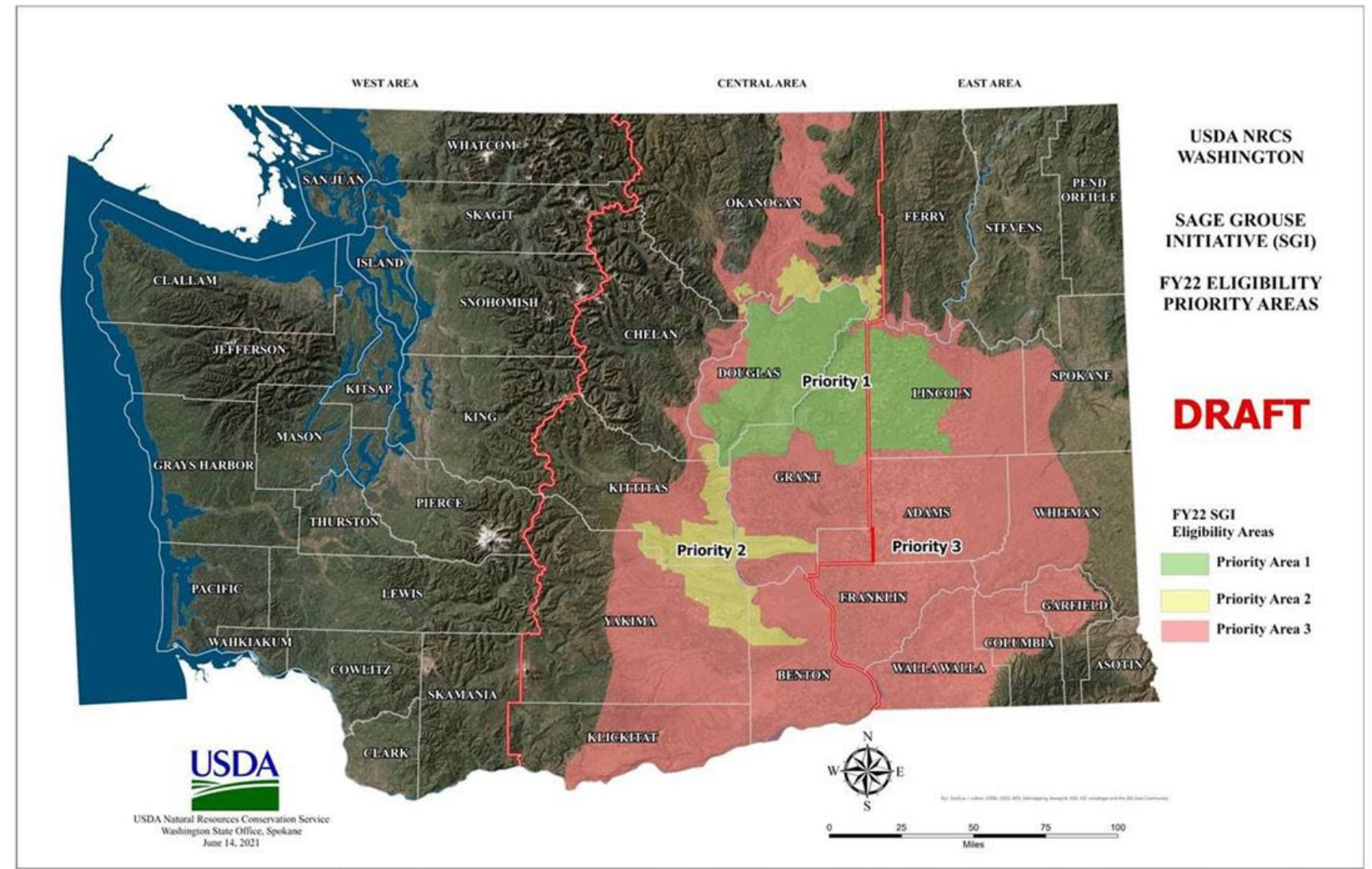
## Proposal for FY2026

Peter McBride, State Wildlife Biologist

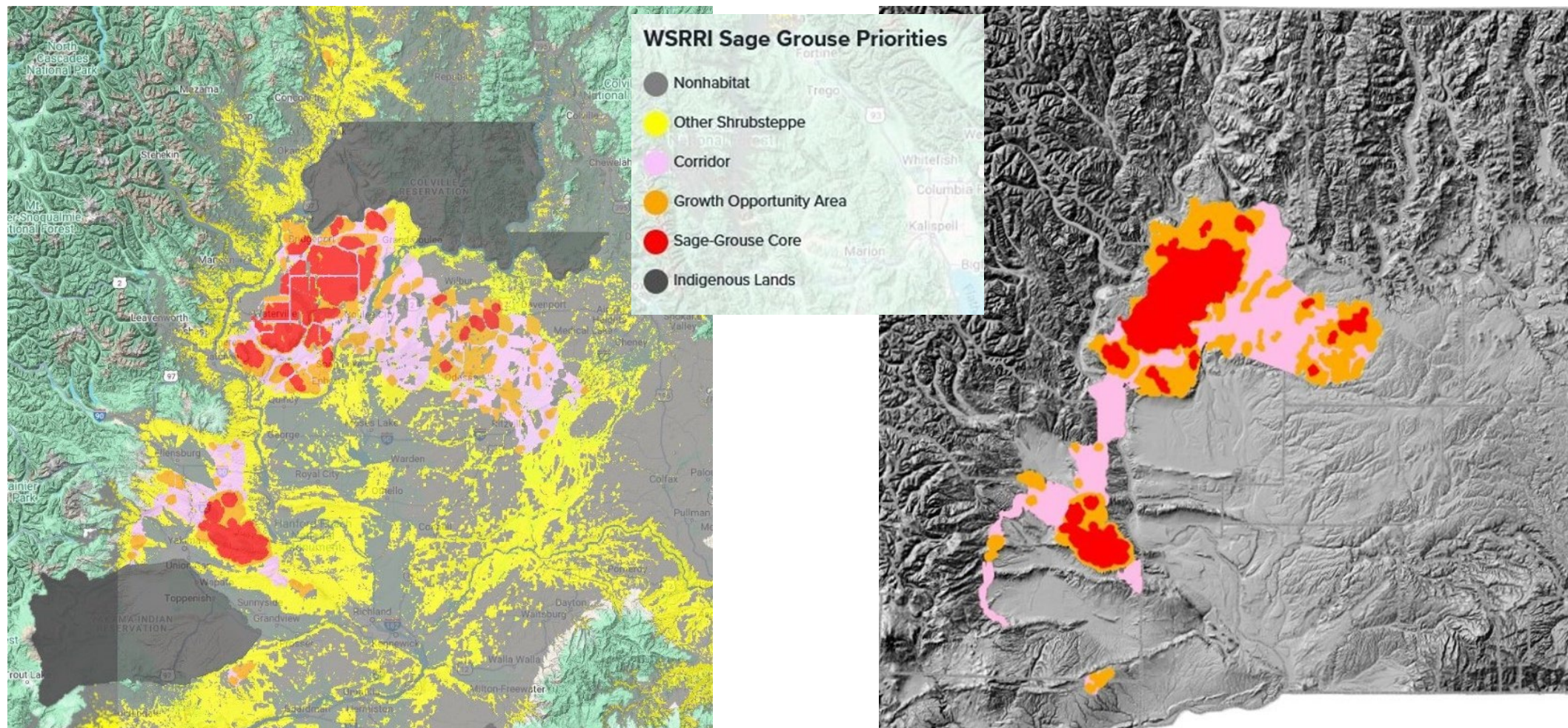


FARM PRODUCTION AND CONSERVATION  
FSA | NRCS | RMA | Business Center

# SGI Priority Areas: periodic updates

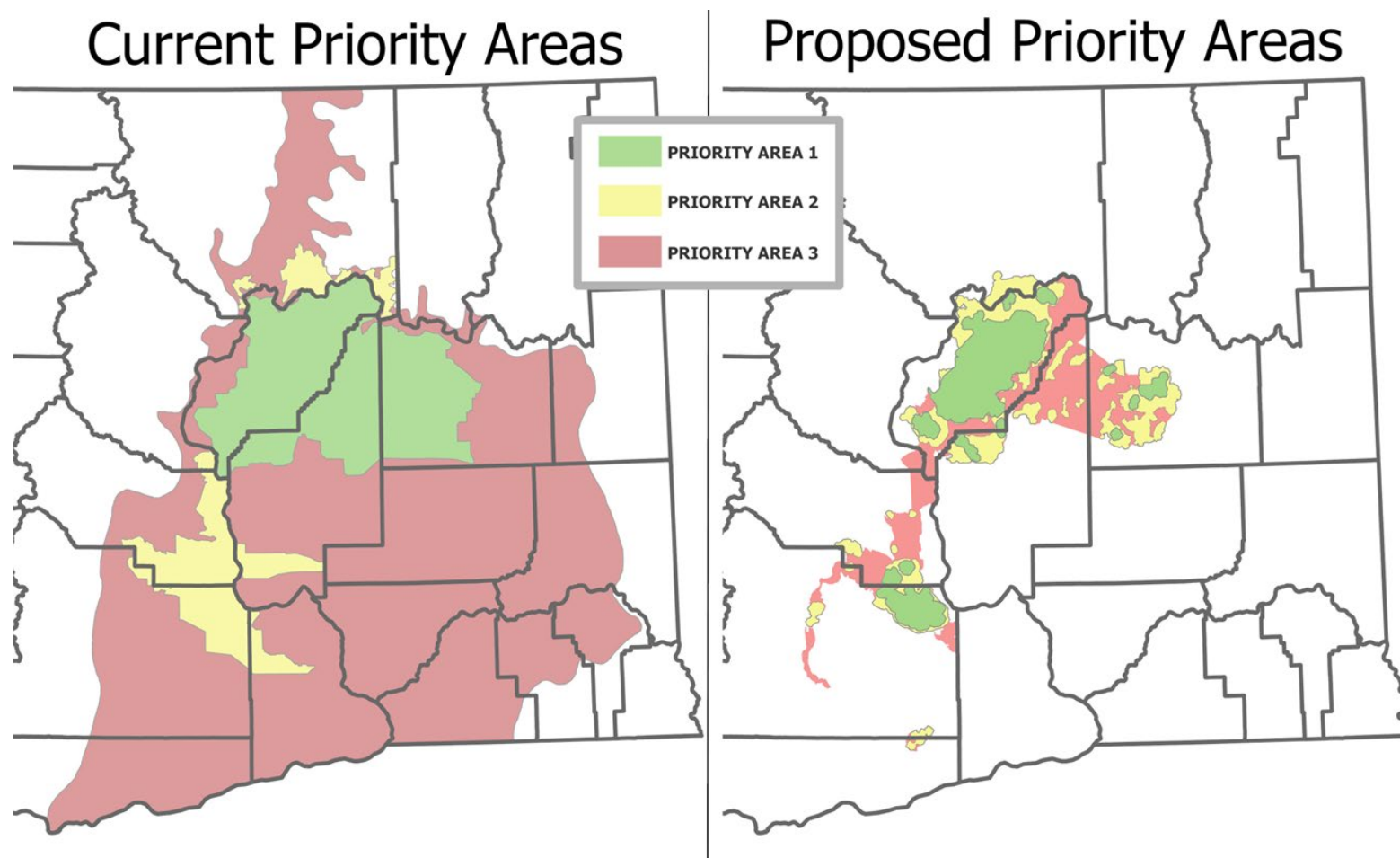


# SGI Priority Areas – use of WSRRI Sage Grouse Priorities mapping as basis for current update





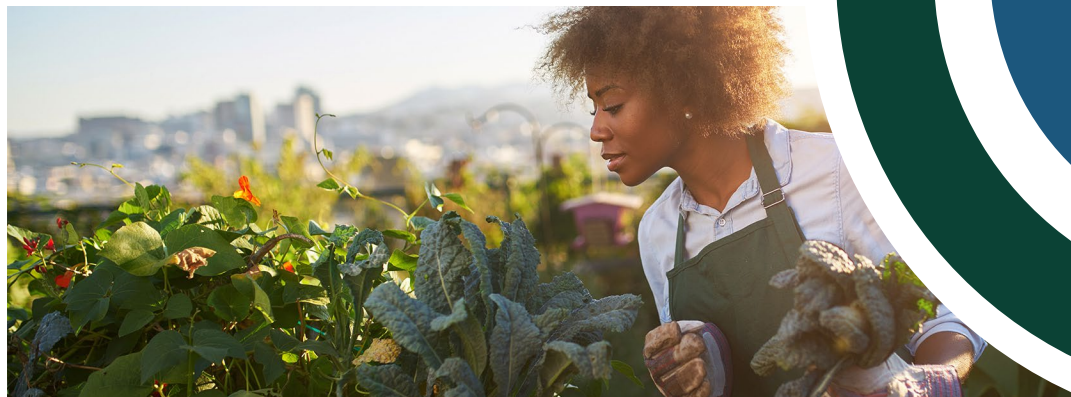
# SGI Priority Areas – comparison of existing and proposed (WSRRI-based) Priority Areas:





Natural Resources Conservation Service  
U.S. DEPARTMENT OF AGRICULTURE

# Questions?



**FARM PRODUCTION AND CONSERVATION**  
FSA | NRCS | RMA | Business Center