

Notice of Prescribed Burn

What YOU Need to Know.



Details and Dates

USDA's Natural Resources Conservation Service (NRCS) in partnership with a private land owner will perform a prescribed burn on a site enrolled in the Wetlands Reserve Program in Polk County, Oregon.

The exact date and time of the burn(s) will depend on weather conditions, but the burn(s) will take place sometime between:

**September 1st -
October 31st, 2025**

Easement Site

Burn Area: 92 acres

Location: 1-2 miles south of Willamina, Oregon near junction of Hwy 22 and Hwy 18.

Private lands are adjacent to the burn area.

Expectations

The burn will be completed by professional prescribed burning teams and will be closely monitored by technical staff to ensure public safety.

Minimal smoke impact is expected.

Prescribed burning is an effective land management tool that provides multiple benefits to the land, including healthier soils, and improved habitat for wildlife.

Contact:

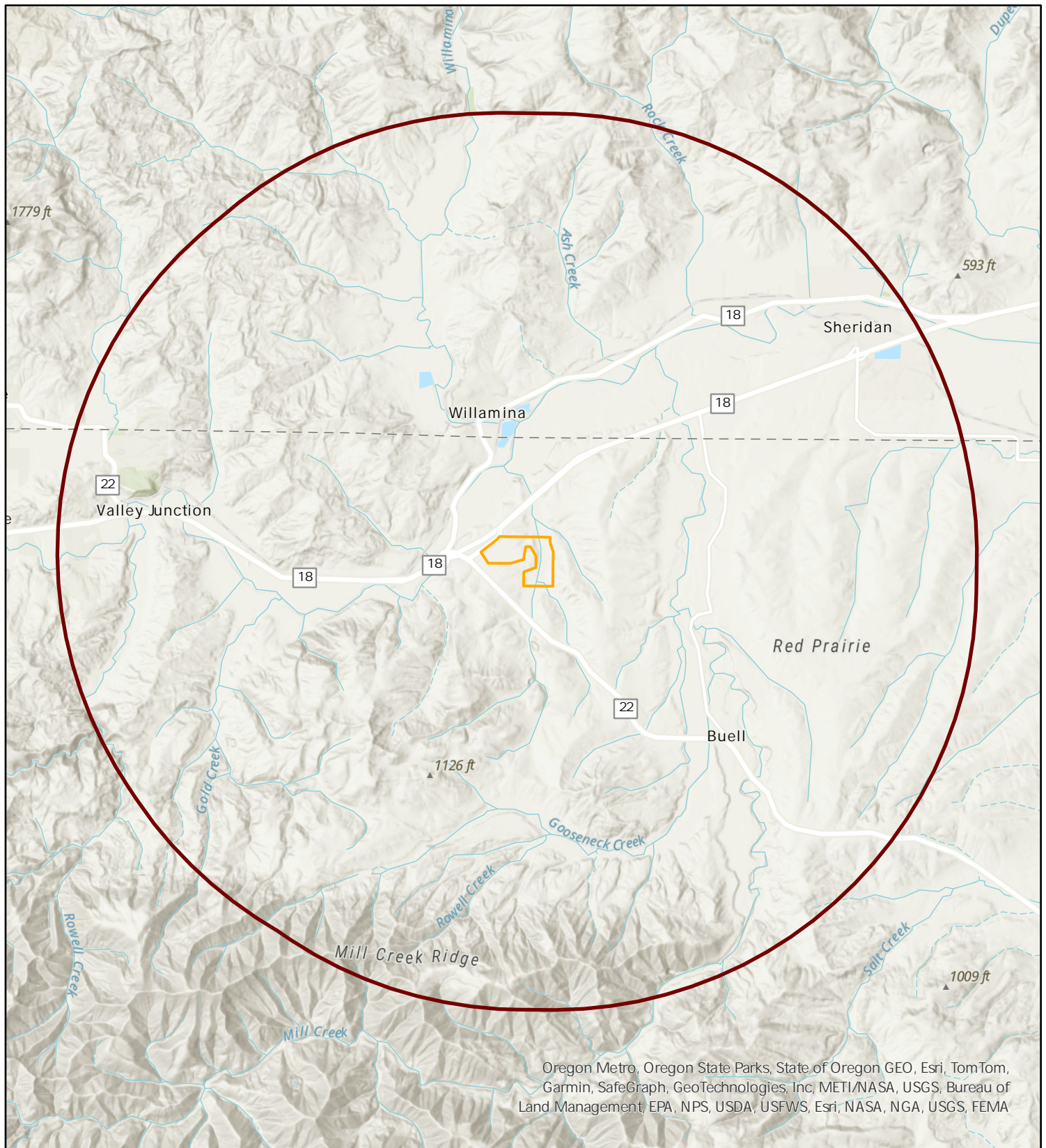
Dani Aleshire,
Basin Wetland Specialist
Phone: 971- 378-9904
Email:
dannelle.aleshire@usda.gov



See map on back page for specific burn location.

Notice published July 2025 by NRCS Oregon.



WRP Easement Prescribed Burn Notification Radius



-  Easement
-  5-Mile Notification Radius

0 2 4 Miles

Scale: 1:100,000

