



# Welcome to the STAC!

**Thanks to all who are able to join us today! We'll get started in just a minute.**

*Please keep cameras off and microphones muted unless you are speaking to ensure meeting bandwidth stability for all.*

*Feel free to use the raise hand and other emote features at anytime during the presentations. You can also use the chat feature at anytime to ask questions or provide feedback.*

*If you need any tech support, please reach out to Sean Forehand:  
[sean.forehand@usda.gov](mailto:sean.forehand@usda.gov) or 970-623-9254 at any time.*

*The meeting is being recorded.*





Natural Resources Conservation Service  
U.S. DEPARTMENT OF AGRICULTURE



# State Technical Advisory Committee (STAC)

September 12, 2024

FARM PRODUCTION AND CONSERVATION  
FSA | NRCS | RMA | Business Center





Natural Resources Conservation Service  
U.S. DEPARTMENT OF AGRICULTURE

# Introductions:

Name, Organization

Favorite Plant

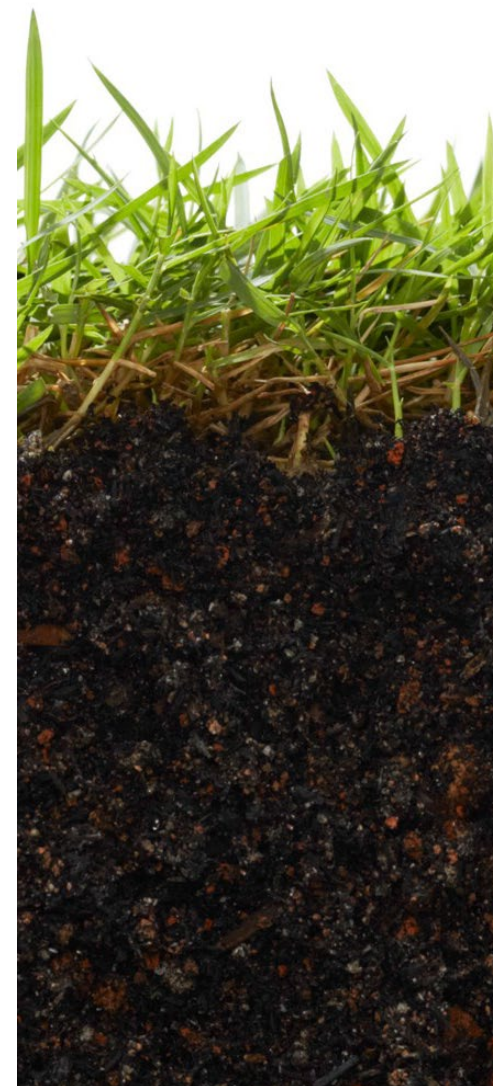


FARM PRODUCTION AND CONSERVATION  
FSA | NRCS | RMA | Business Center



# Today's Agenda

- 8:00 am **Welcome and Introductions**
- 8:15 am **NRCS Update & Agenda Changes**— Liz With, NRCS Assistant State Con. for Partnerships
- 8:35 am **NRCS Programs Update** — Renee Koch, NRCS Acting Assistant State Con. for Programs
- 9:55 am Break**
- 10:00 am **Farm Service Agency Updates**- Corey Pelton, FSA Farm Program Chief & Hunter Cleveland, FSA Agricultural Program Specialist
- Conservation Reserve Program (CRP) Updates
  - Emergency Conservation Program (ECP) & Emergency Forest Restoration Program (EFRP)
- 10:30 am **Partner Updates** (*approximately 10 minutes each*)
- Colorado State Conservation Board—Rakel Sanchez
  - Colorado Parks and Wildlife—Ray Aberle
  - Colorado State Forestry- Christina Burri
- 11:00 am **Wildlife Subcommittee Report**- Ray Aberle, CPW Subcommittee Chair
- 11:10 am **Easements Subcommittee Report**
- 11:20 am **Source Water Protection Subcommittee Report** — Robert Murphy, CDPHE Subcommittee Chair
- 11:30 am **Urban Ag Subcommittee Report**
- 11:40 am **Forestry Subcommittee Report**- Christina Burri, CSFS Subcommittee Chair
- 11:50 am **Open Discussion**- All
- 12:00 pm **Closing Remarks**— Liz With, NRCS Assistant State Con. for Partnerships







# Colorado NRCS Updates

Liz With

Assistant State Conservationist for Partnerships





# Financial Assistance Programs Updates

Renee Koch

Acting Assistant State Conservationist for Programs







United States Department of Agriculture



# NRCS Programs 2024



*STAC September  
12, 2024*

Natural  
Resources  
Conservation  
Service

[nrcs.usda.gov/](https://nrcs.usda.gov/)

# In 2024



Act Now

CSP Minimum Annual  
Payment Increase

Specialized “targeted”  
Projects

Irrigation Pilot projects  
Wild Flood and Wetland Wildlife  
Habitat Project



Natural  
Resources  
Conservation  
Service

[nrcs.usda.gov/](https://nrcs.usda.gov/)



# Act Now Process



## How it works

- Allows NRCS to preapprove applications that meet a state-determined minimum ranking score – a.k.a the “threshold” score as they are submitted.
- Allows States to designate existing or develop ranking pools to follow the Act Now process.
- States also establish the portion of their allocation to use in Act Now ranking pools.
- States establish the threshold score.
- Applications below the threshold may be funded in ranking order if applications above the threshold have been funded, or the ranking deadline has been met.
- Other aspects of general or program-specific policy still apply to Act Now.



# CSP Minimum Annual Payment Policy Change

Was \$1500



FY2024 on, now  
\$4000







# Payment Schedule Rates

**Recommendation: Keep at the maximum level of 75% Regular and 90% Historically Underserved**



# Local Work Group Meetings 2024 Results



Amber Freouf



# What do we achieve by hosting these meetings?



Help determine State Priority Resource Concerns



Aid in determining State Priority Conservation Practices



Identify barriers producer face in implementing Conservation Programs



Pinpoint outreach needs



Recognize training needs for NRCS staff, partners, and producers

+

•

o

# Participation Level

- 75 conservation districts statewide were asked to provide feedback
  - 46 districts provided feedback back



# Top Producer Resource Concerns: Statewide Ag Land (Cropland, Range, Pasture)

**Inefficient Irrigation  
Water Use**

**Pest Pressure**

**Groundwater/Surface  
Water Depletion**

**Plant Productivity and  
Health**

**Soil Health**

**Erosion**

**Organic Matter  
Depletion**

**Plant Structure and  
Composition**

**Inadequate Livestock  
Water**

**Inadequate Feed and  
Forage**

# Top Resource Concerns Statewide: Forestry

Wildfire Mitigation

Pest Pressure

Plant Productivity and Health

Threat of Land Conversion

Erosion Wind and Water



# Colorado State Priority Resource Concern Considerations for FY24

Ag Land	NIPF
Degraded Plant Condition	Wind and Water Erosion
Field Sediment, Nutrient and Pathogen Loss	Degraded Plant Condition
Field Pesticide Loss	Fire Management
Livestock Production Limitations	Pest Pressure
Soil Quality Limitations	Soil Quality Limitations
Source Water Depletion	Source Water Depletion
Pest Pressure	Terrestrial Habitat
Wind & Water Erosion	Weather Resistance

# Practices Colorado Producers Report Work Well

- 528 Prescribed Grazing
- 382 Fence
- 614 Tank
- 516 Livestock Pipeline
- 533 Pump
- 642 Well
- 550 Range Planting
- 315 Herbaceous Weed Control
- 595 Pest Management
- 590 Nutrient Management
- 340 Cover Crop
- 329 No Till
- 345 Reduced Till
- 328 Conservation Crop Rotation
- 442 Center Pivot
- 443 Gated Pipe
- 430 Irrigation Pipeline
- 587 Structure for Water Control
- 449 Irrigation Water Management
- 600 Terraces
- 666 Forest Stand Improvement
- 384 Woody Residue Treatment



# Practices That Don't Work Well According to Colorado Producers

- 340 Cover crop
  - 329 No Till
  - 528 Prescribed Grazing
  - 550 Range Planting
  - 315 Herbaceous Weed Control
- NOTE: Drought, chemical resistant weeds, and costs were noted reasons why these do not work. Drought was the most common response.

# Barriers Producers Identified in Conservation Programs

**NRCS Staff shortages in  
areas**

**Lack of  
understanding/knowledge  
of programs**

**Cost of materials to install  
practices**

**Labor Costs**

**Engineering Design  
Timeline**

**Communication**

# New Technology Suggestions by Producers

- Virtual Fencing
- Use of Drones for cropland and rangeland monitoring
- Drone Technology for seeding, spraying, scouting
- Satellite imagery for monitoring
- Biochar
- Carbon sequestration credits
- Lazer weed sprayers
- Hydroponics



# Other Producer Comments about Conservation Program Delivery



Become more active in social media/ email



More outreach and success stories



More education on practices



Quicker Turnarounds



More clarification on requirements program processes

# Thank you

---



# 2024 Conservation Stewardship Program Updates



Amber Freouf



# FY24 Accomplishments

Increase in participation across the state

ACT NOW process used for all fund pools

## FY24 Renewals

- \$280,466.00 obligated across 4 contracts

## FY24 Farm Bill Funds

- Expected to obligate \$11,560,000 across 116 contracts

## FY24 IRA Funds

- Expected to obligate \$8,118,000 across 55 contacts

# Potential FY25 Fund pools

## IRA Signup Fund Pools

Area 1 Ag Land

Area 2 Ag Land

Area 3 Ag Land

BFR Ag Land

SDFR Ag Land

Urban

Source Water  
Protection

Non-Industrial Private  
Forest Land (NIPF)

## General Signup Fund Pools

Area 1 Ag Land

Area 2 Ag Land

Area 3 Ag Land

BFR Ag Land

SDFR Ag Land

Organic/Transition to  
Urban

Source Water  
Protection

Sage Grouse Initiative  
SGI – Greater

Sage Grouse Initiative  
SGI- Gunnison

Non-Industrial Private  
Forest Land (NIPF)

Poll Question: Should the Fiscal Year 2025 Colorado State Priority Concerns be reflected based from Local Work Group Meeting results and todays discussion?

<b>Ag Land (Cropland, Rangeland, Pastureland)</b>	<b>NIPF (Non-Industrial Private Forest Land)</b>
Degraded Plant Condition	Wind and Water Erosion
Field Sediment, Nutrient and Pathogen Loss	Degraded Plant Condition
Field Pesticide Loss	Fire Management
Livestock Production Limitations	Pest Pressure
Soil Quality Limitations	Soil Quality Limitations
Source Water Depletion	Source Water Depletion
Pest Pressure	Terrestrial Habitat
Wind & Water Erosion	Weather Resilience

# Thank you

---







# NRCS EQIP

---

STAC

SEPTEMBER 12, 2024



# 2020-2024 EQIP in Colorado



# FY 24 EQIP Summary Report

Farm Bill Funds	Inflation Reduction Act (IRA) Funds
\$28,864,768.28	\$28,030,187.97
356 Contracts	183 contracts
94,605 acres	113,456.4 acres





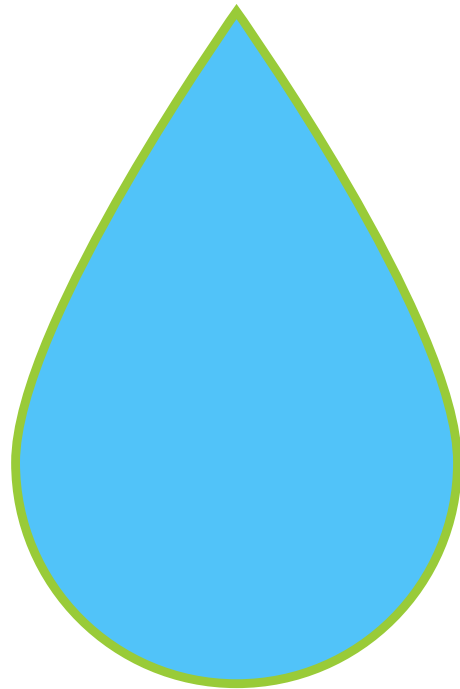
## SOURCE WATER PROTECTION

---

### STAC RECOMMENDATIONS







## FY 25 Source Water Protection Policy

---

Identify high priority areas for the protection of source waters for drinking water

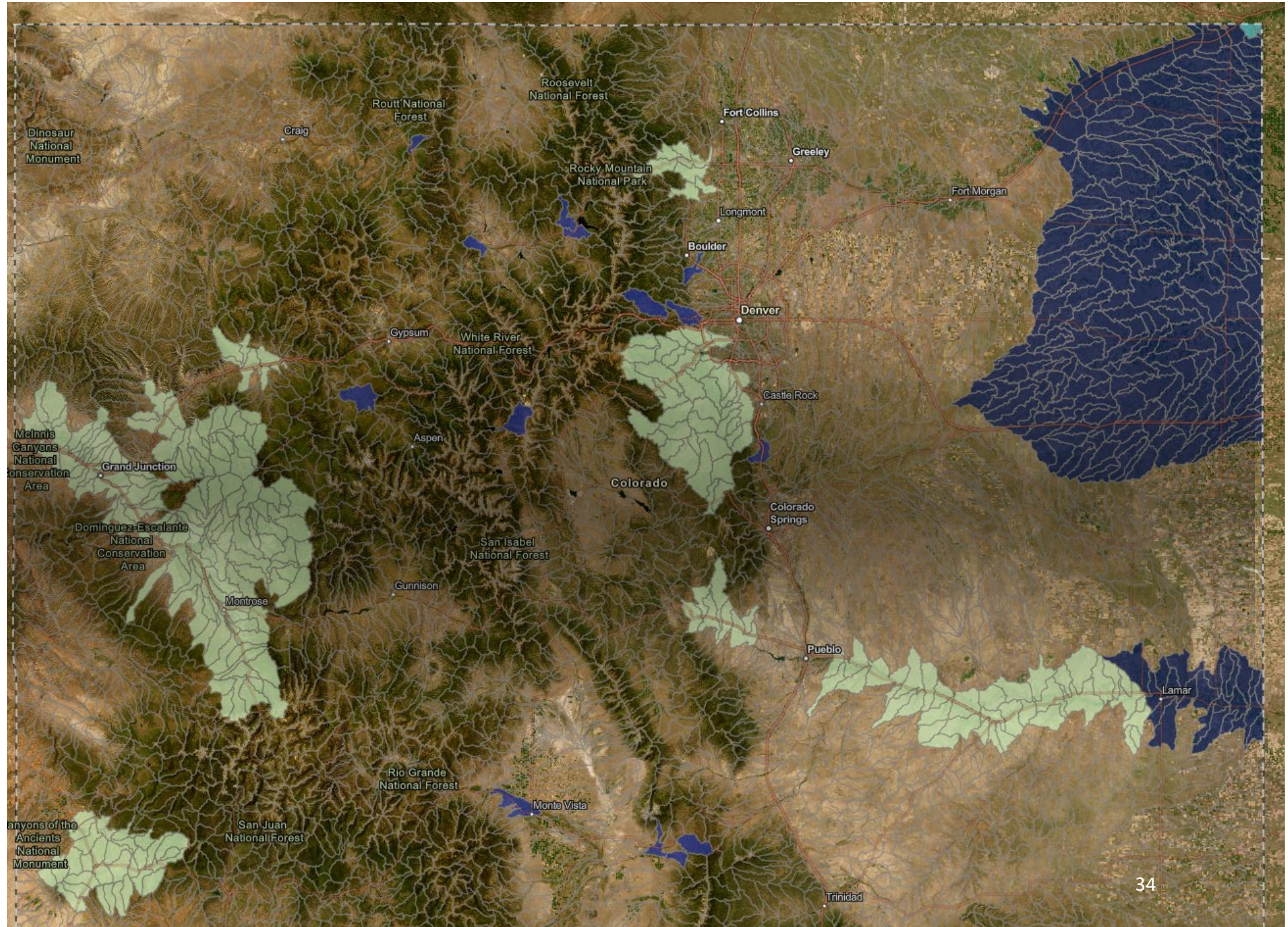
AND

Identify practices that address water quality and quantity concerns

AND

Offer producers increased incentives and higher payment rates in high priority areas







# FY 25 Source Water Protection Practice Recommendations

---

315 – Herbaceous Weed Control

327 – Conservation Cover

328 – Conservation Crop Rotation

329 – Residue and Tillage Mgmt – No Till

340 – Cover Crop

351 – Well Decommissioning

384 – Woody Residue Treatment

391 – Riparian Forest Buffer

393 – Filter Strip

449 – Irrigation Water Management

512 – Forage and Biomass Planting

528 – Prescribed Grazing

550 – Range Planting

580 – Streambank and Shoreline Protection

590 – Nutrient Management

595 – Pest Management Conservation System

666 – Forest Stand Improvement





## HIGH PRIORITY PRACTICES

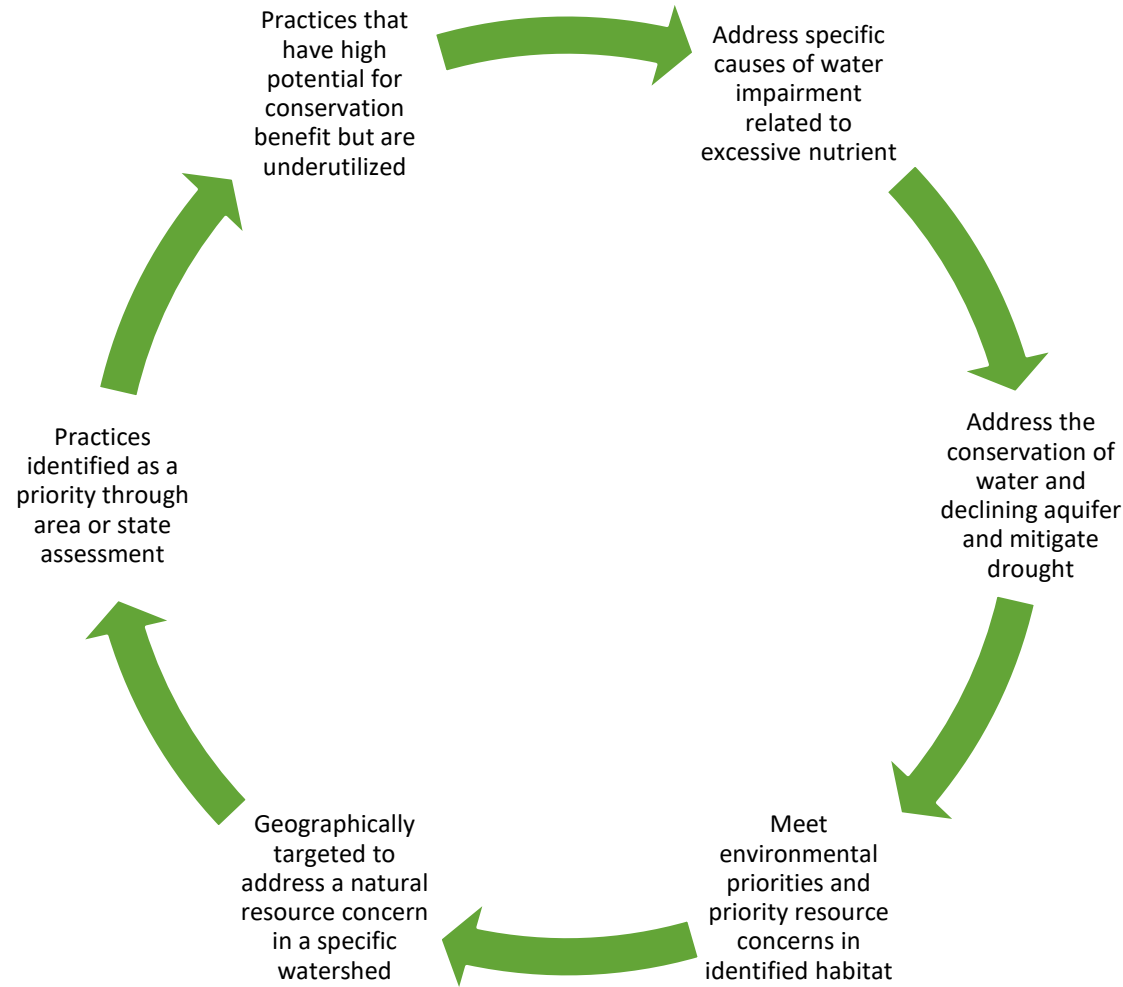
---

### STAC RECOMMENDATIONS





May Designate up to 10  
Practices that ...



# FY 25 High Priority Practice Policy

# FY 25 High Priority Practice Recommendations

---

340 -- Cover Crop

327 -- Conservation Cover

449 – Irrigation Water Management

580 – Streambank and Shoreline Protection

612 – Tree and Shrub Planting

395 – Stream Habitat Improvement & Management

315 – Herbaceous Weed Control

528 – Prescribed Grazing

590 – Nutrient Management

645 – Upland Wildlife Habitat Management





## CONSERVATION INCENTIVES CONTRACTS

---

### STAC RECOMMENDATIONS



## **EQIP Conservation Incentive Contracts (CIC)**

---

**Address at least 1 Priority Resource  
Concern**

---

**Minimum 5 year contract**

---

**\$200,000 Contract Limit**

---

**Implementation Payment**

---

**Annual Payment**

---

**Steppingstone between EQIP and  
CSP**

---



## **FY 25 EQIP CIC High Priority Areas Recommendations**

---

### **Grazing land Resilience to Drought**

- **Climate Smart Core Practice**
  - **528 Primary Practice**
- **Statewide**
- **Land Uses**
  - **Forest, Pasture, Range**



# FY 25 EQIP CIC Resource Concern Recommendations

---

- Degraded Plant Condition
- Livestock Production Limitation
- Terrestrial Habitat
- Weather Resilience



# Colorado 2024 EQIP Farm Bill Funding Opportunities

- Socially Disadvantaged Farmer/Rancher
- Beginning and Limited Resource Farmer/Rancher
- Wildlife Habitat
- SGI – Greater and Gunnison Sage Grouse
- Lesser Prairie Chicken
- Southwestern Willow Flycatcher
- On-Farm Energy
- Joint Chief's – The Southern Front Range
- NWQI – Limestone-Graveyard Creek
- National Air Quality Initiative
- Water Management Entities
- Urban Ag
- Organic Transition Initiative (OTI)
- WaterSMART

- Organic Transition
- Ute Tribal Conservation Projects
- Animal Waste
- Forest Health
- Salinity – Colorado River Basin
- Salinity Wildlife
- High Tunnel ACT NOW
- Conservation Planning Activity
- Design and Implementation Activities
- Ogallala Aquifer Project
- Resource Team Locally Led Projects
- Pilot Irrigation Project
- Lateral 46 Ditch Project



# Colorado 2024 EQIP Inflation Reduction Act Funding Opportunities

---

IRA ACT NOW Forestry

---

IRA ACT NOW Soil Health

---

IRA ACT NOW Wildlife

---

IRA ACT NOW Climate Smart Mitigation

---

IRA ACT NOW Climate Smart Mitigation Beginning  
Farmer/Rancher

---

IRA ACT NOW Climate Smart Mitigation Socially  
Disadvantaged Farmer/Rancher

---

IRA ACT NOW Wild Flood and Wetland Wildlife  
Habitat

---

IRA ACT NOW CIC Grazing land Resilience to  
Drought

# DISCUSSION FOR 2025 FUNDING OPPORTUNITIES

---

**Resource Team Fund Pools**

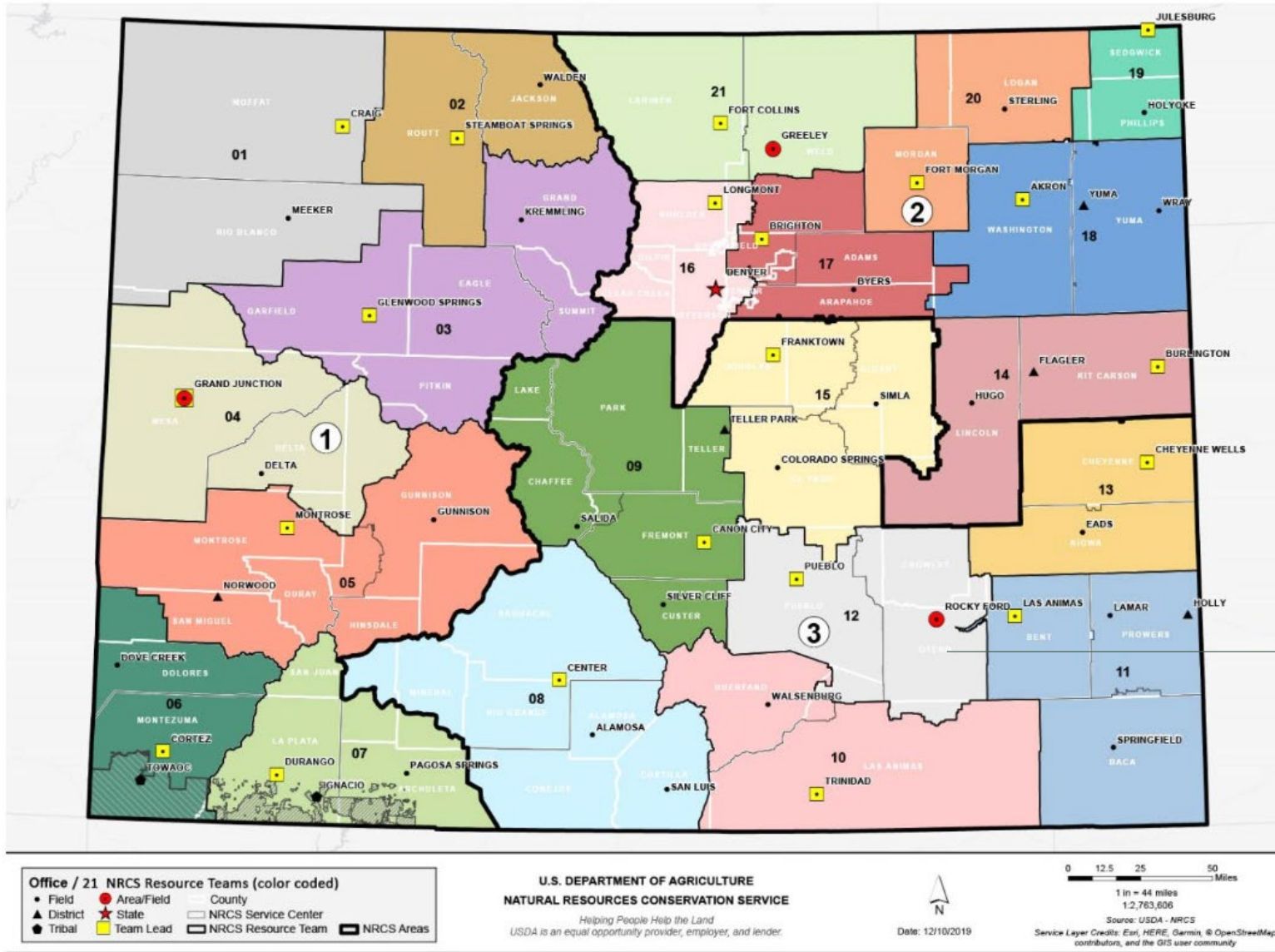
**vs.**

**Watershed Fund Pools**



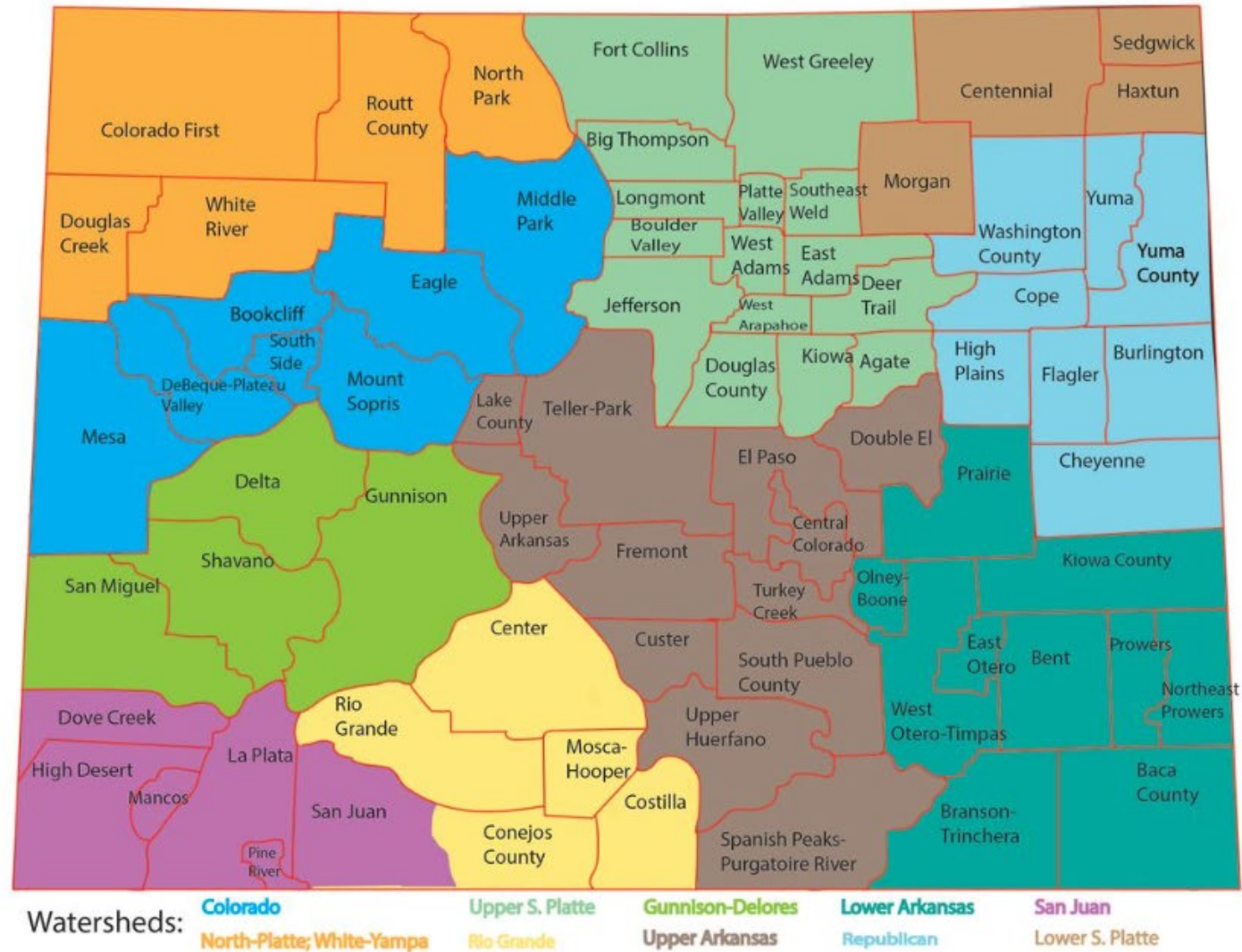


# Colorado NRCS Offices

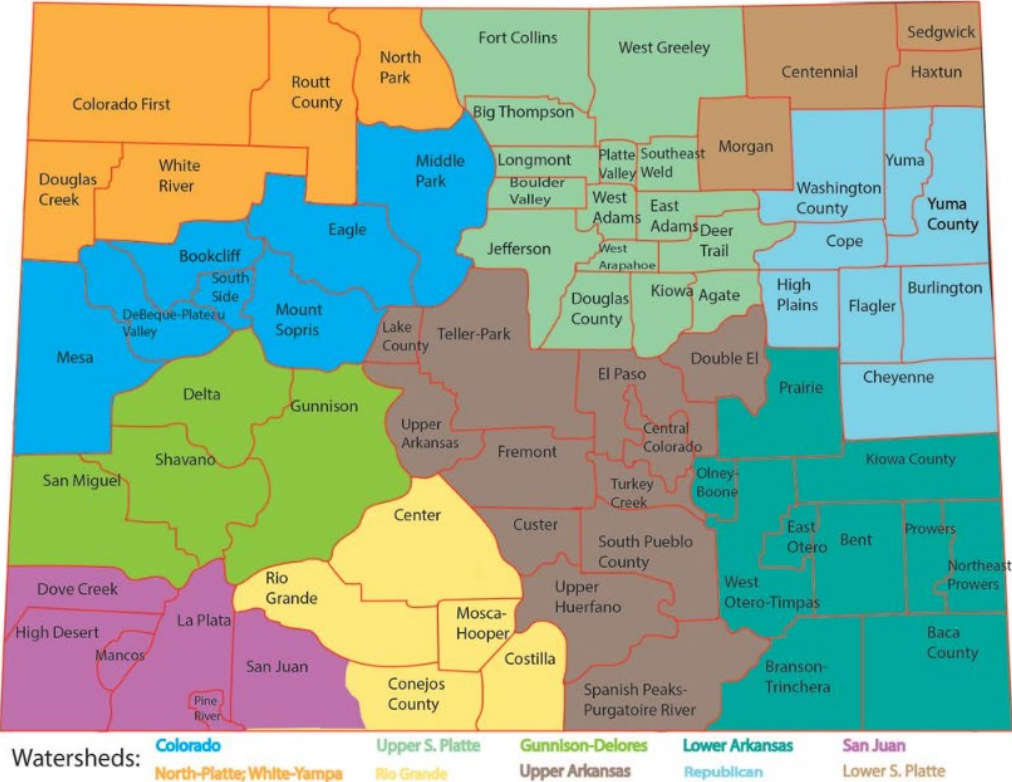




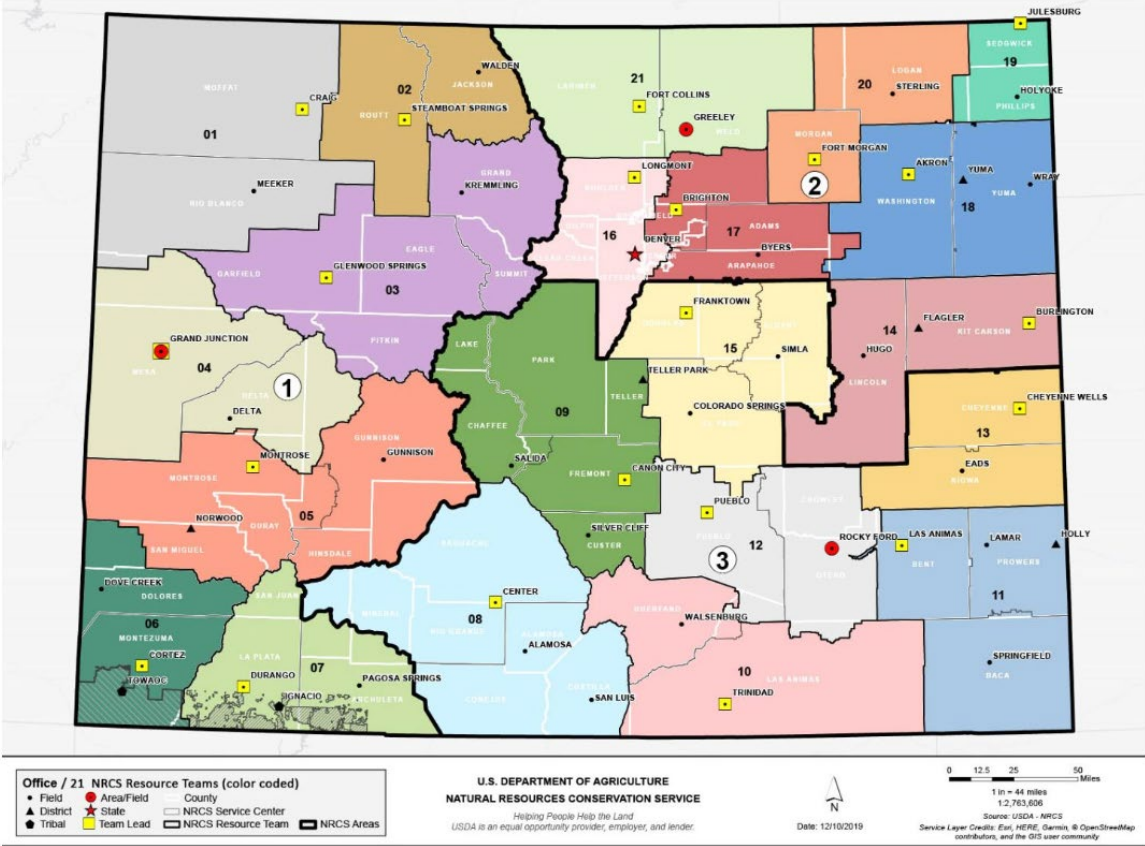
# Watershed Associations



Watershed Associations



Colorado NRCS Offices



# Why Change?

---

## WATERSHEDS

- Larger initial allocation – potential to fund more applications
- LWG feedback with more input
- Ten Ranking Pools
- Distribute workload across larger area

## RESOURCE TEAMS

- Smaller allocation – potentially only fund one application
- LWG feedback at district level
- Twenty –one Ranking Pools
- Offers additional flexibility in workload management







# Questions

---

NRCS IS AN EQUAL OPPORTUNITY  
EMPLOYER, LENDER AND PROVIDER.



---

# REGIONAL CONSERVATION PARTNERSHIP PROGRAM (RCPP)

RCPP Coordinator  
[marissa.markus@usda.gov](mailto:marissa.markus@usda.gov)







---

# RCPP PURPOSE

- Vision to provide the opportunity for NRCS to work with partners that encourage innovation, high-performing solutions, accelerate conservation mission, and demonstrate the value of voluntary, private lands conservation
  - NRCS and partners co-invest in conservation activities to address resource concerns at a regional scale
  - NRCS and partners utilize land management and easement activities to address resource concerns
-

---

# FY 24 ACCOMPLISHMENTS



\$1,530,683 FA obligated in Land Management (LM) producer contracts/supplemental agreement



\$950,274 FA obligated in Entity Held Easements (EHE) parcel contracts

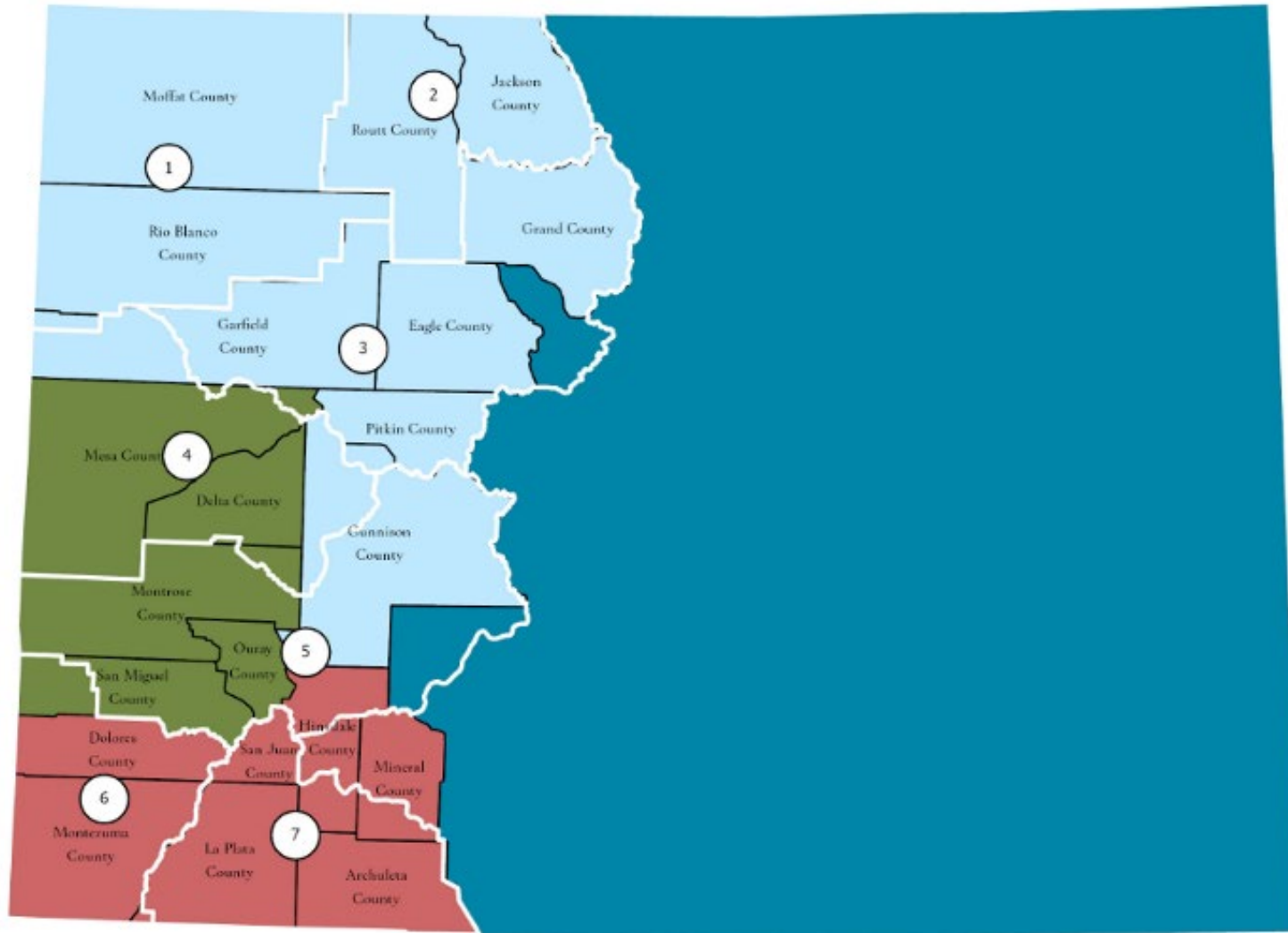


\$482,000 FA obligated in Supplemental Agreement



12 Proposals under the FY24 Notice of Funding Opportunity

Requested Project Cost: \$193,247,215.00



Participating Counties - Colorado



## STEWARDED THE WORKING WILD IN MT, OR, AND CO: NON-LETHAL PREDATOR RISK MANAGEMENT ON AGRICULTURE OPERATIONS

FA: \$2,500,000, \$0 obligated LM

TA: \$927,926.80, \$407,565.11 obligated

Partner Contribution: \$6,301,260.00

Addressing livestock production limitation, terrestrial habitat, field sediment, nutrient and pathogen loss



---

# JEFFERSON CD COLORADO NORTHERN FRONT RANGE

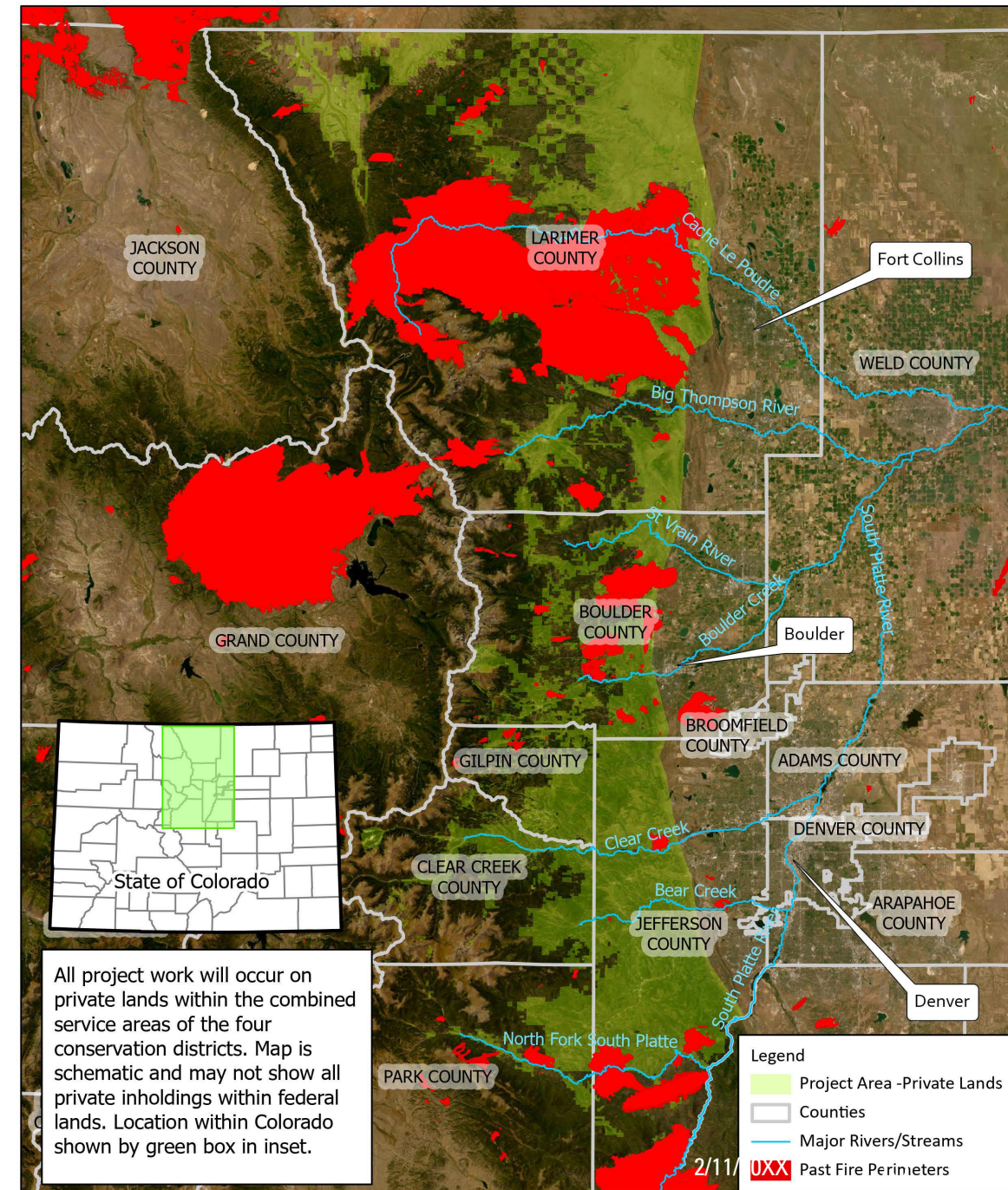
FA: \$10,839,375.00, \$0 obligated LM

TA: \$1,650,000, \$603,750 obligated

Partner Contribution: \$4,487,500.00

Addressing inadequate habitat, insufficient  
water/drought, water quality degradation

---





---

## UPPER ARKANSAS FOREST FUND

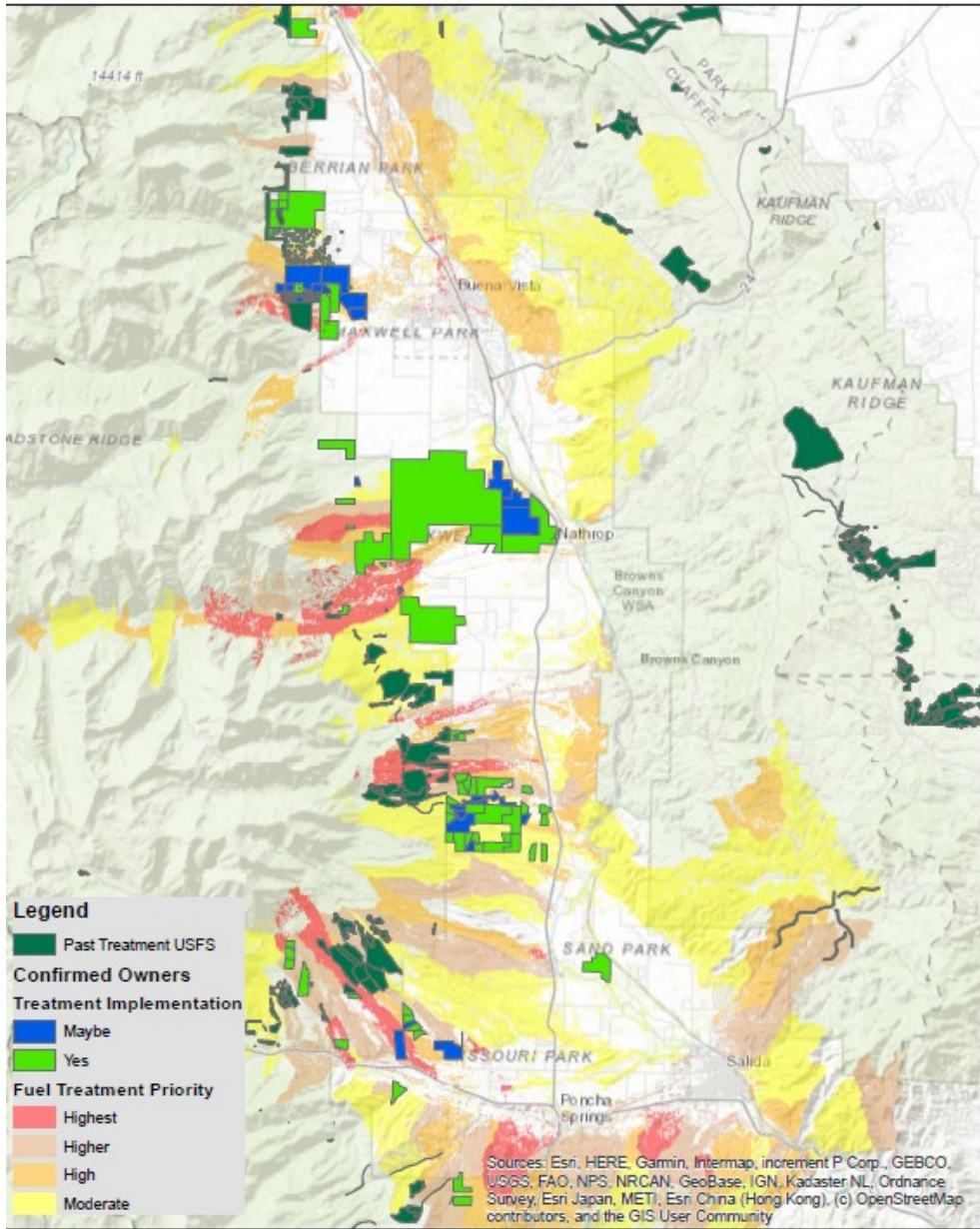
FA: \$4,000,000, \$190,000 obligated LM

TA: \$1,049,714.34, \$265,801.54 obligated

Partner Contribution: \$9,560,024.00

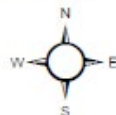
Addressing degraded plant condition, soil quality degradation

---



Prepared By:  
Colorado State Forest Service  
Salida Field Office  
March 2021

0 1.25 2.5 5 7.5 10  
Miles





---

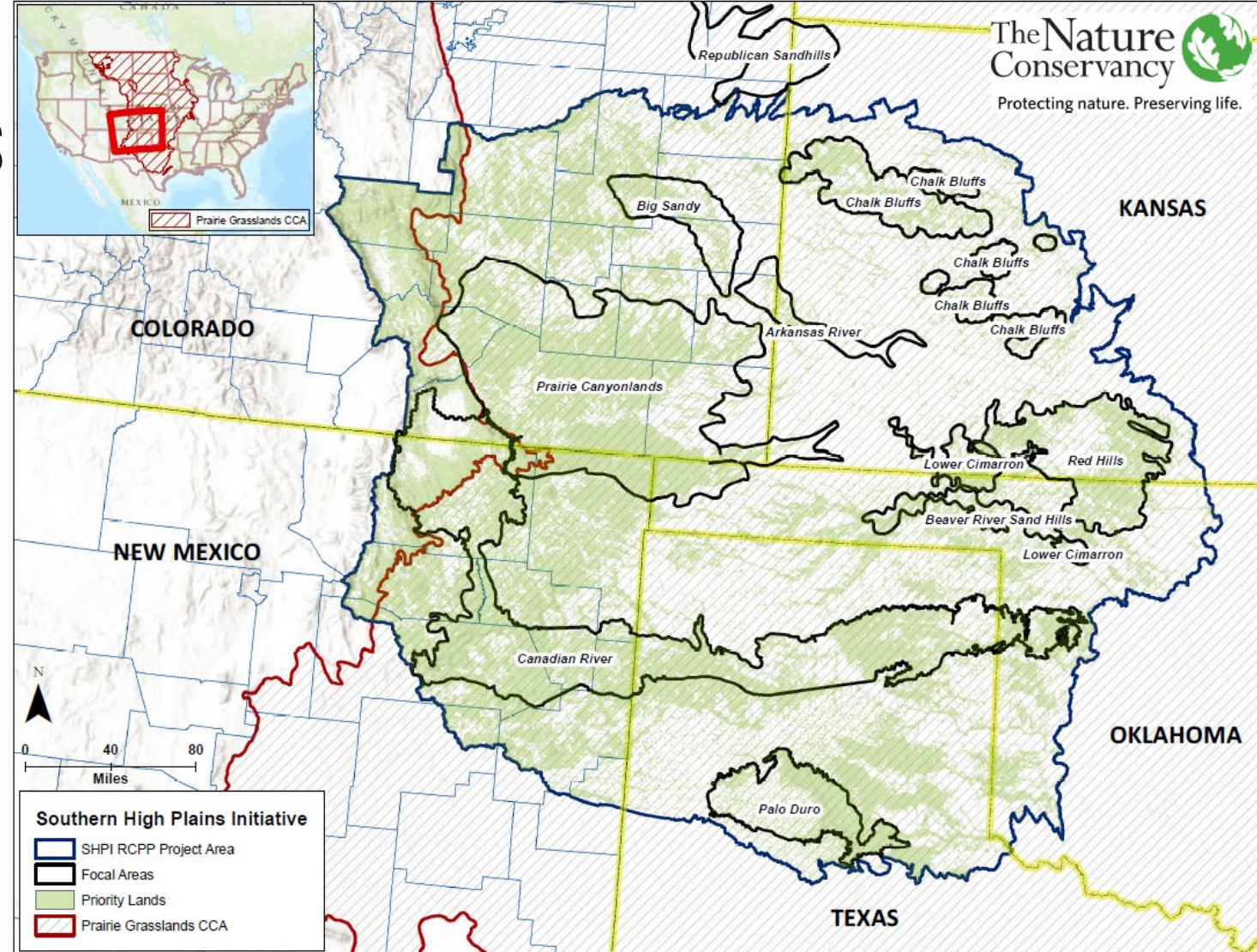
# ESTABLISHMENT OF GRASSLAND STRONGHOLDS ACROSS THE SOUTHERN HIGH PLAINS

FA: \$3,000,000, \$0 Obligated EHE

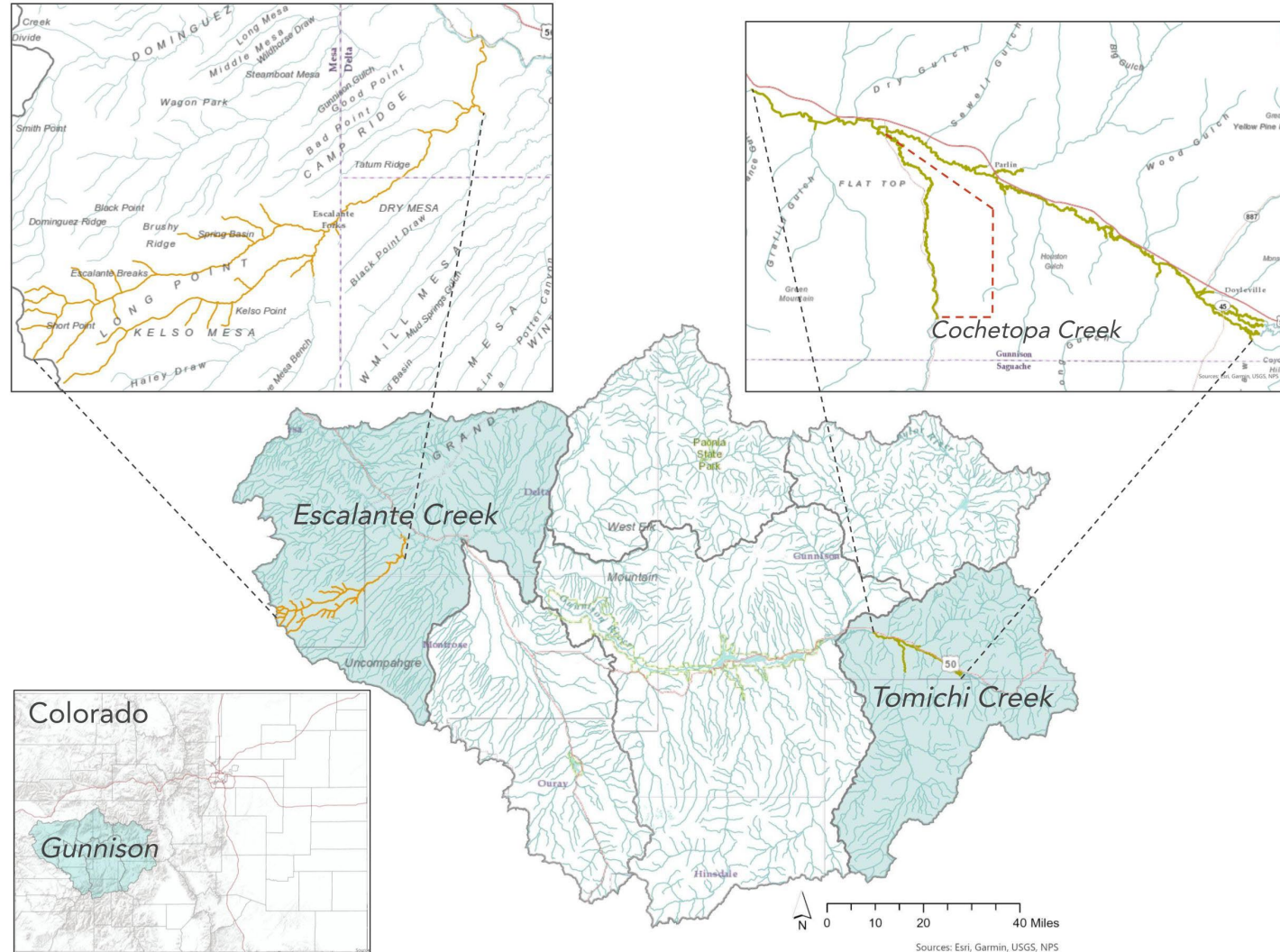
TA: \$300,000, \$202,000 Obligated

Partner Contribution:\$10,200,000.00

Addressing terrestrial habitat, long term  
protection of land







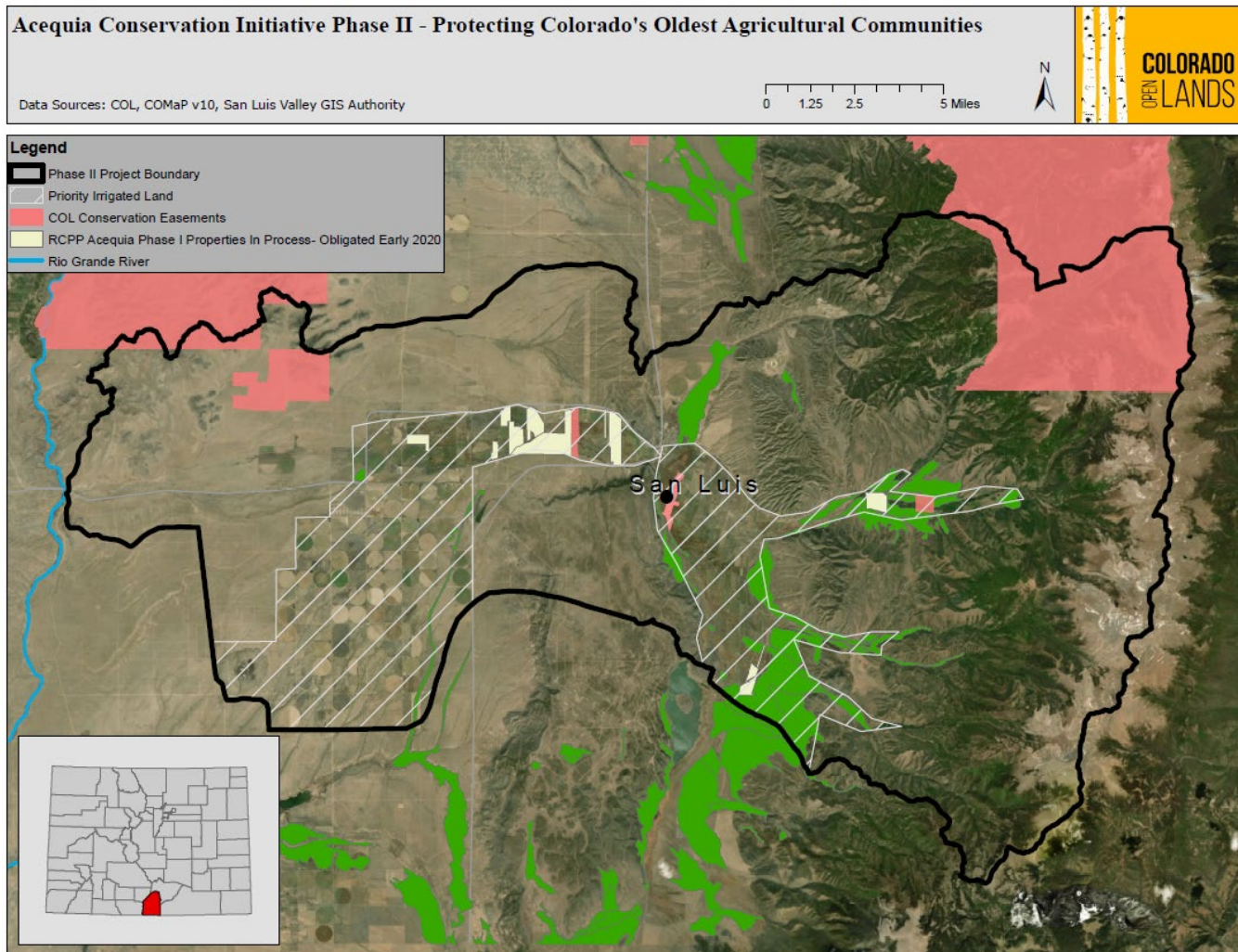
# GUNNISON RIVER DROUGHT RESILIENCY AND RESTORATION

FA: \$576,615.14, \$292,301.55  
obligated LM

TA: \$246,297.86, \$183,600 obligated

Partner Contribution:  
\$830,677.00

Addressing water quality  
degradation, inadequate habitat,  
insufficient water



# THE ACEQUIA CONSERVATION INITIATIVE – PHASE II

FA: \$1,607,000, \$340,683 Obligated LM, \$237,538 Obligated EHE

TA \$0

Partner Contribution: \$2,187,000.00

Addressing Aquatic habitat, Soil quality limitations, Terrestrial habitat, Weather resilience, Wind and water erosion



# UPPER RIO GRANDE PARTNERSHIP TO PRESERVE

FA: \$5,898,364.10, \$1,190,000 obligated  
in LM, \$0 Obligated in EHE

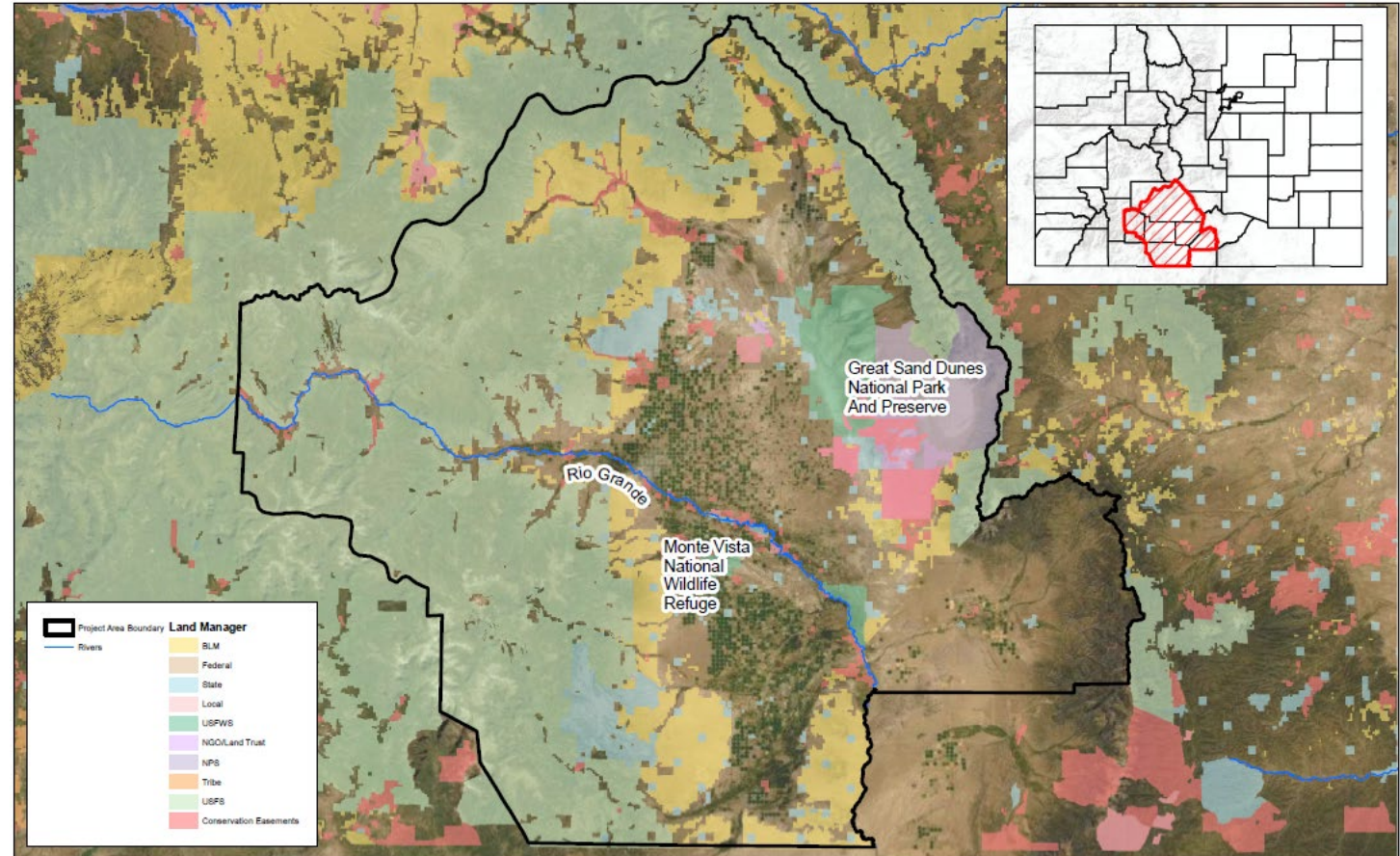
TA: \$160,000, \$49,200 obligated

Partner Contribution: \$6,058,500.00

Addressing Aquatic habitat; Source  
water depletion; Terrestrial habitat;  
Weather resilience



## UPPER RIO GRANDE PARTNERSHIP TO PRESERVE AGRICULTURE AND RESTORE AQUIFERS SAN LUIS VALLEY, COLORADO



Preparer: Colorado Open Lands Date: 11/24/20 Data Source: ESRI, COMap20190306, RGWCD, Trinchera, CWCB  
Public Access should not be inferred from this map. This map is not a survey and should not be construed as one.

0 5 10 20  
Miles



---

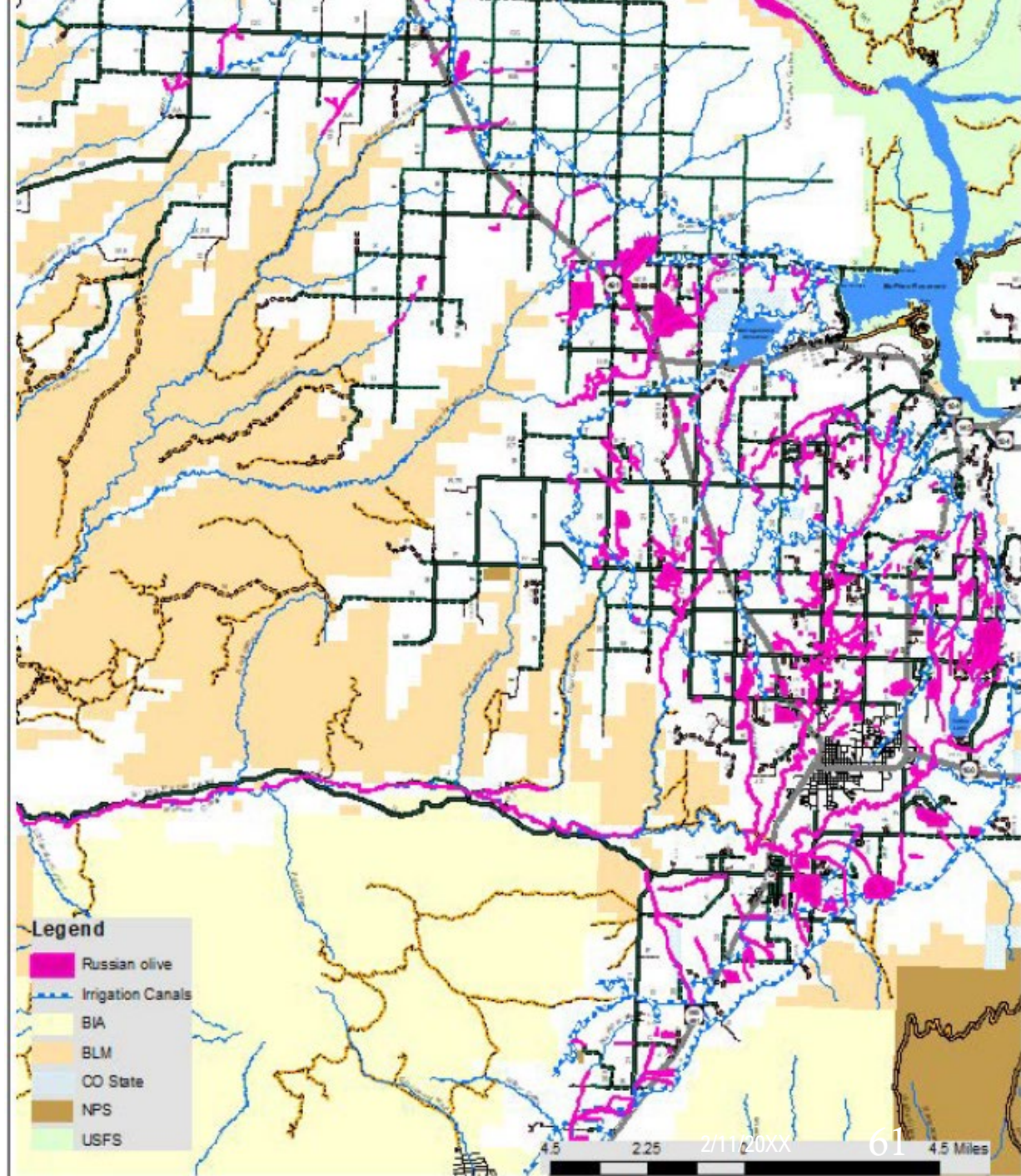
# MONTEZUMA COUNTY PHREATOPHYTE PROJECT

FA: \$250,000, Obligated \$243,028 LM

TA: \$0

Partner Contribution: \$458,440

Addressing aquatic habitat, terrestrial  
habitat, pest pressure





# UPPER COLORADO RIVER - YAMPA & LITTLE SNAKE BASIN

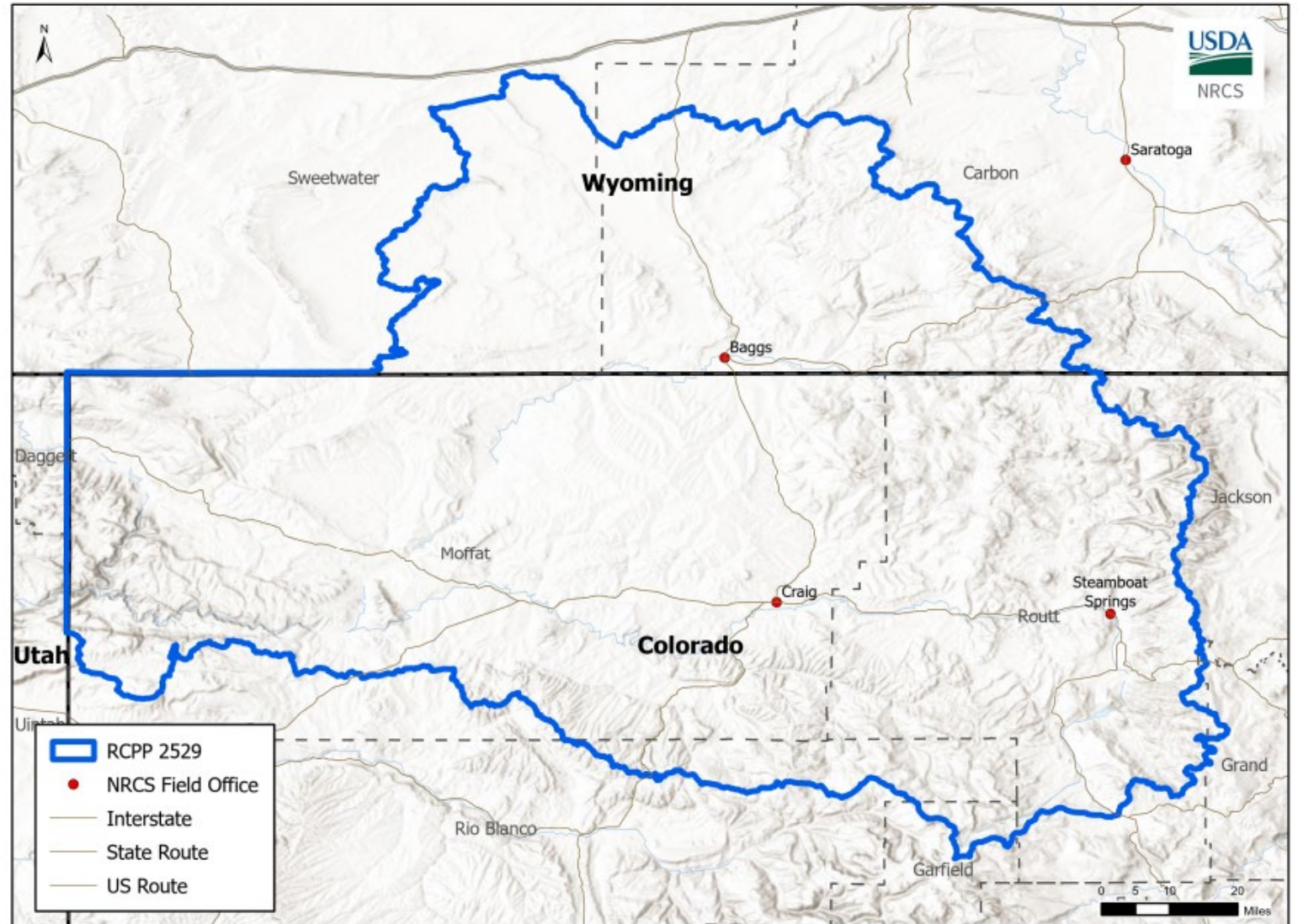
FA: \$1,765,772.66, Obligated

\$687,952.88 LM Obligated \$0 EHE

TA: \$50,000, \$0 Obligated

Partner Contribution: \$7,489,249.95

Addressing Aquatic habitat,  
Concentrated erosion, Field sediment,  
nutrient and pathogen loss, Livestock  
production limitation, Terrestrial  
habitat, Weather resilience



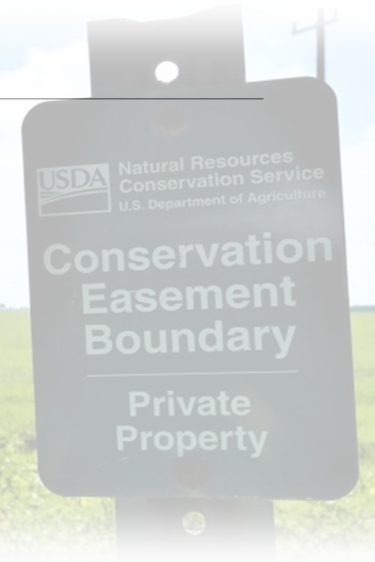
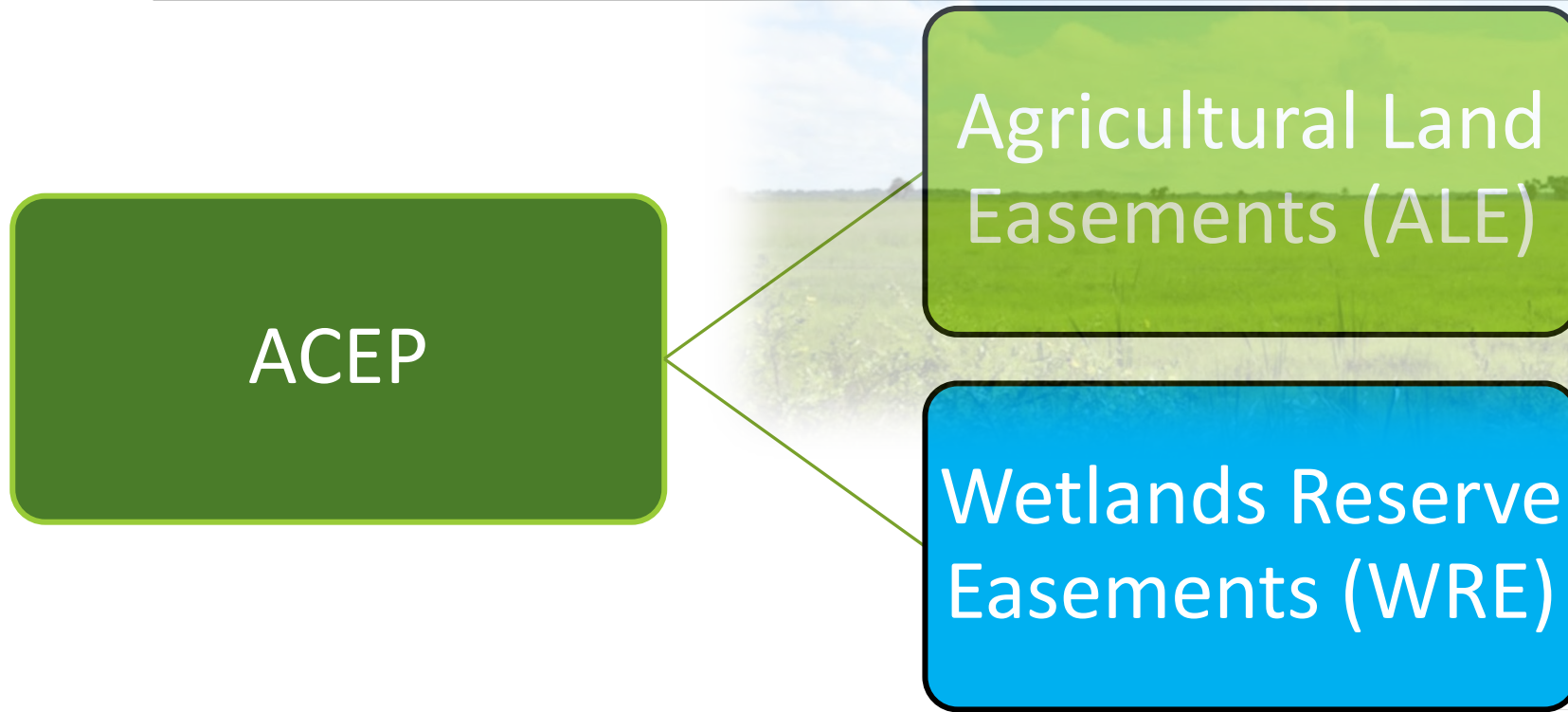


THANK YOU





# ACEP Component Programs



# STAC Role in ACEP

---

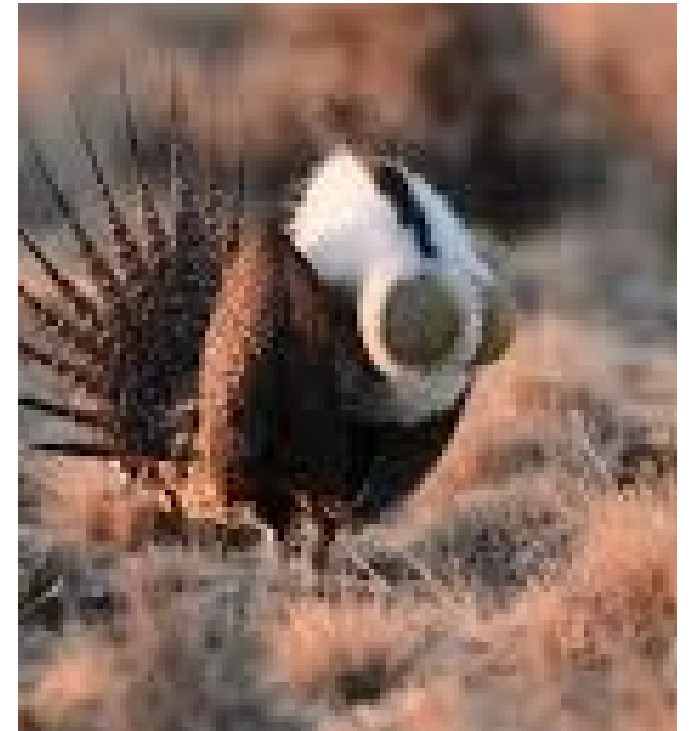
- ACEP regulation and policy requires or allows input from STAC on:
  - WRE valuation – Geographic Area Rate Cap “GARC”
  - Ranking criteria and prioritization
  - Wetland Restoration Criteria and Guidance (WRCG) technical document
  - Other technical issues as defined in regulation and policy
- Subcommittee provides tailored recommendations to the STAC, and polls for acceptance of a final recommendation to the State Conservationist.



# Fiscal Year 2024 Accomplishment

Closings	Grassland of Special Significance – Sage Grouse	General	RCPP	Total
Acres	8,844 ac.	2, 318.13 ac.	2,613.9 ac.	13,775.78 ac
Federal Share	\$9,075,000	\$1,488,900	\$712,736	\$11,276,636

New Obligations	Grassland of Special Significance – Sage Grouse	General	RCPP	Modifications to existing enrollments	Total
Acres	8,357.8 ac.	5,215.85 ac.	275.53 ac.		13,849.18 ac.
Federal Share	\$4,873,750	\$3,515,000	\$237,538	\$2,225,987	\$10,852,275







## Inflation Reduction Act – Agricultural Land Easement Program (IRA-ACEP)

---

Application Batching Dates for  
FY2025

- October 4, 2024
- December 20, 2024

[Colorado NRCS Announces NEW  
2025 IRA-ACEP Application  
Batching Dates | Natural  
Resources Conservation Service  
\(usda.gov\)](#)

# Fund Pool and Rankings

## IRA-ACEP

- WRE
- ALE

## ACEP-ALE

- General
- Grasslands of Special Significance – Non-Sage Grouse
- Grasslands of Special Significance – Greater Sage Grouse
- Grasslands of Special Significance – Gunnison Sage Grouse

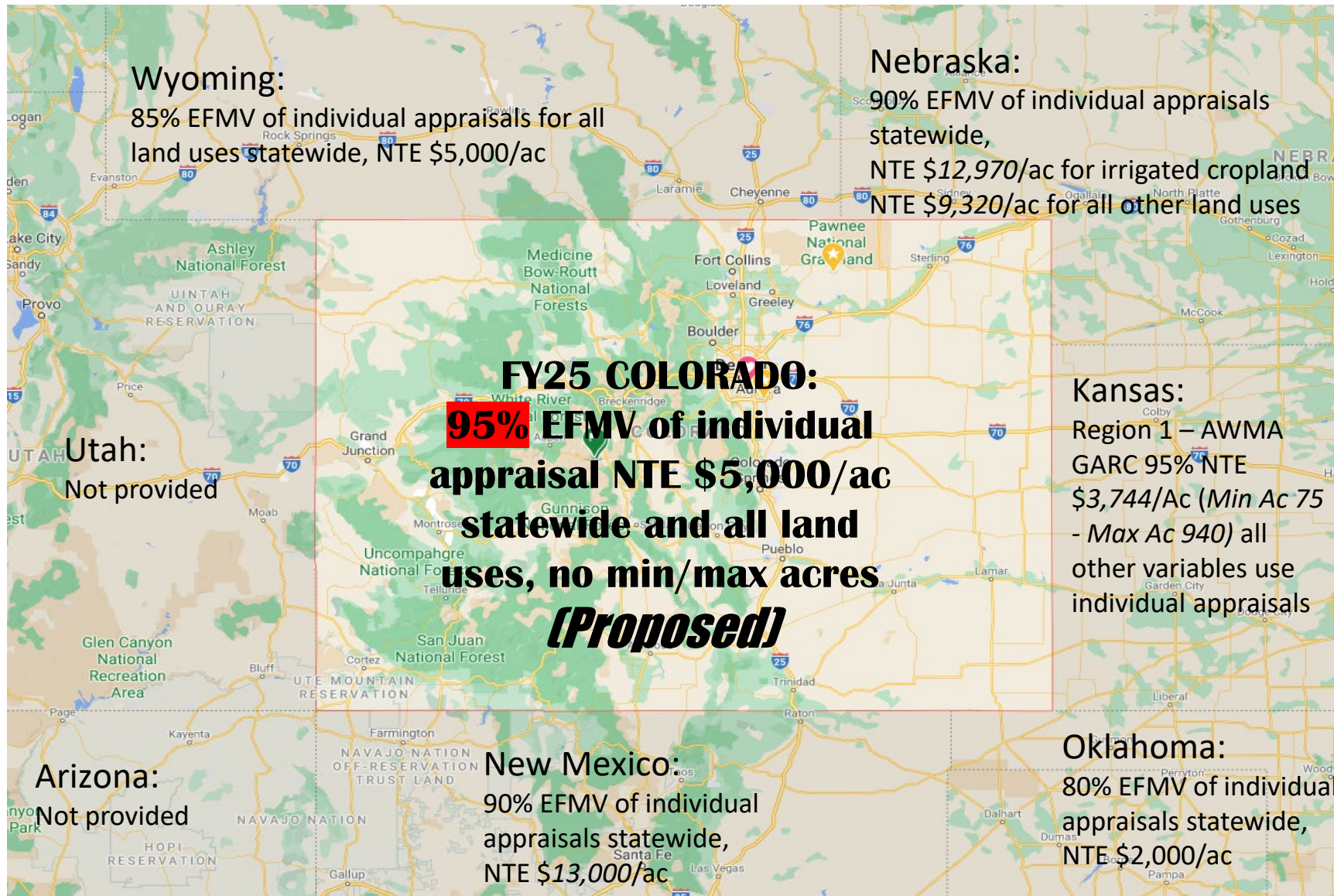
# FY2025 GARC

---

- Recommendation from the prior STAC meeting, was just generally, to increase the GARC rate.
- FY24 GARC – 95% EFMV of Individual appraisals, Not to Exceed \$5,000/acre.



# FY24 GARCs - WRE



Vote: Y/N

Recommend the proposed rate of  
95% EFMV of Individual appraisals,  
Not to Exceed \$5,000/ac.





# Partner Updates

Rakel Sanchez, Colorado State Conservation Board  
Ray Aberle, Colorado Parks and Wildlife  
Christina Burri, Colorado State Forest Service







# STAC Subcommittee Reports & Recommendations





# Wildlife Subcommittee Presentation to the STAC

9/12/2024





## Guiding Principles of the Wildlife Subcommittee:

- Targeted to geography and practice.
- Aware of and engaged with local producers, economies and recognize their interests.
- Advisory to the full State Technical Committee on wildlife opportunities and needs.
- Recognize the need and role of diverse partners to support USDA in delivering the outcomes desired by this sub-committee.



# PLAYA Conservation: Evaluation and Opportunities

1. Playa Lakes Joint Venture Meeting was held in CO.
2. Growing interest in playa conservation. Informational training: Friday, October 4th.
3. Wildlife Subcommittee reviewed playa definitions and provided comments to NRCS Easements Team.

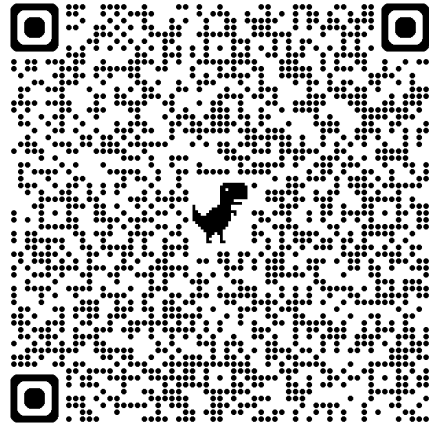


# EQIP-IRA: Wild flood and Wetland Wildlife

Fund Pool was Developed in for fiscal 2024 and implemented in SLV.

Conversations about improving this fund pool have been happening between the wildlife subcommittee and NRCS Programs to improve implementation in 2025.

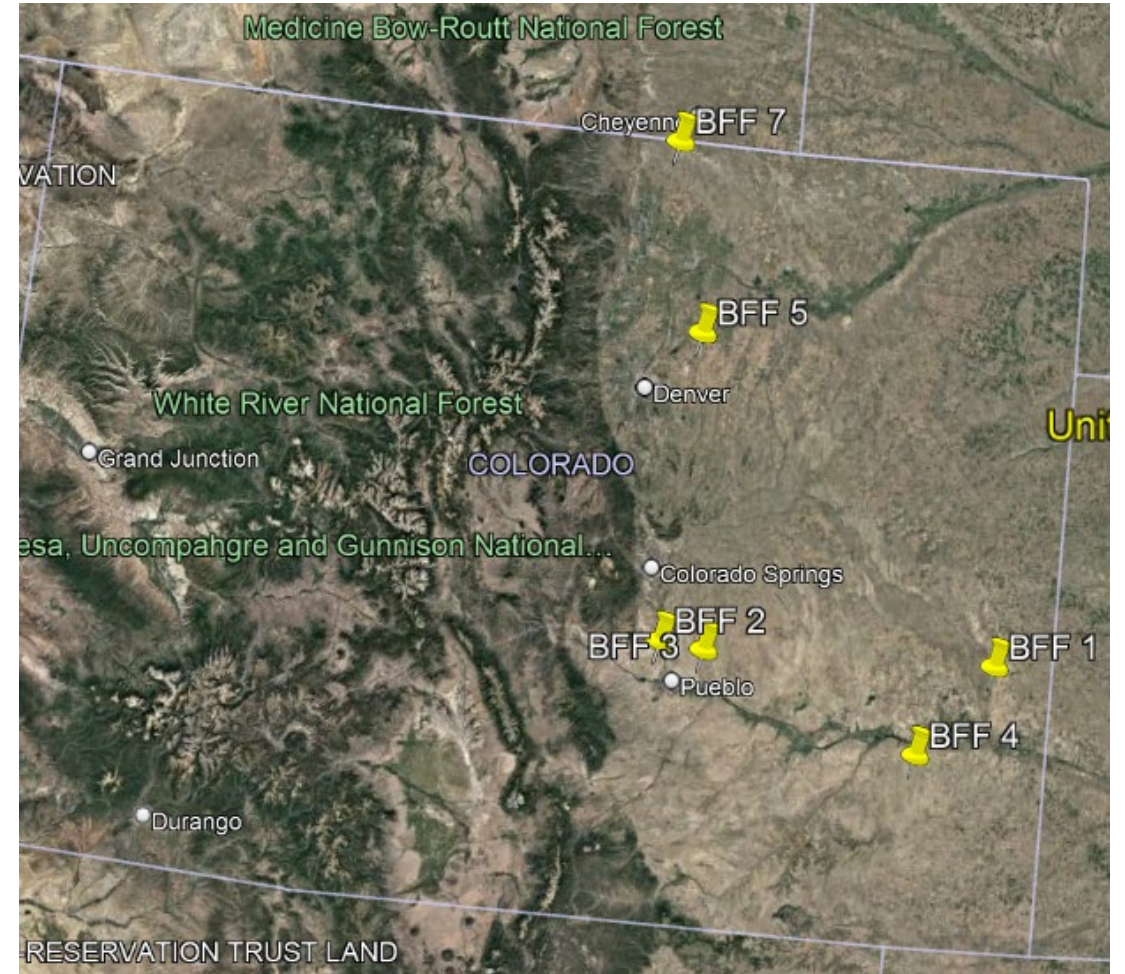
<https://iwjv.org/flood-irrigation/>



# Black-Footed Ferret Restoration Efforts

Colorado has sites with documented BFF occupancy.

- NRCS has been a critical partner in these efforts through Technical Assistance, Planning and Funding through the EQIP program.
- CPW underwent a BFF program leadership transition last Fall.

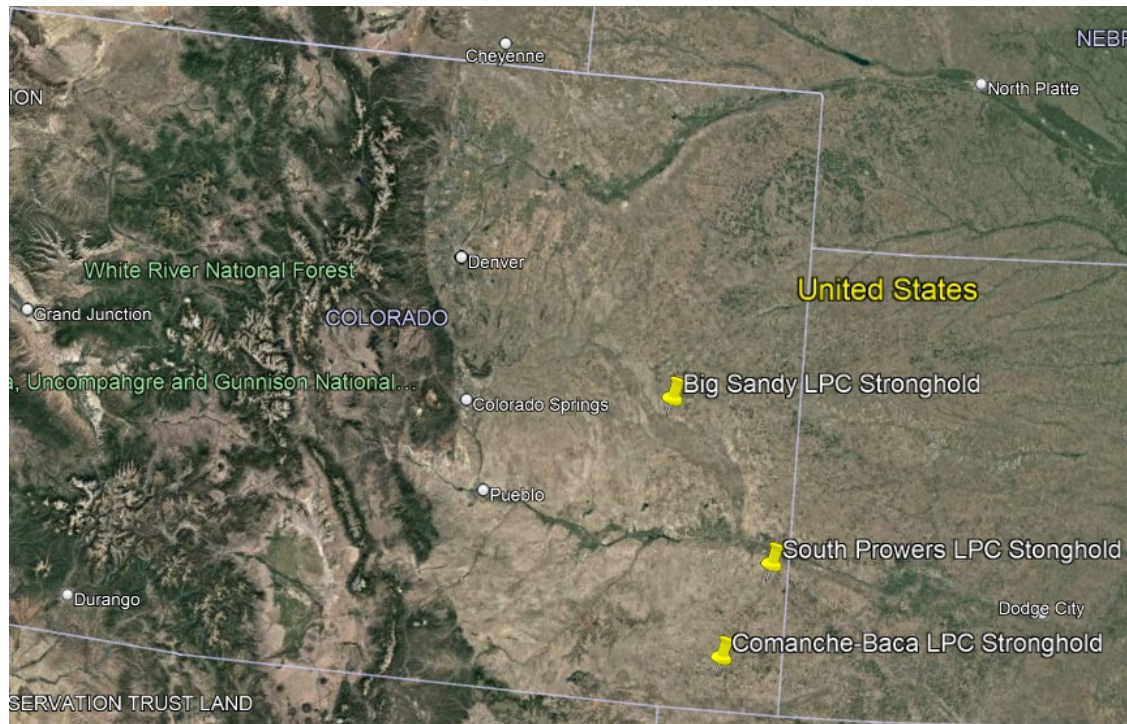




# Lesser Prairie-Chicken Conservation



1. Overview: State of Chickens in the State of Colorado
2. FSA Biological Opinion
3. USDA Programs to Support
4. CPW Strategy



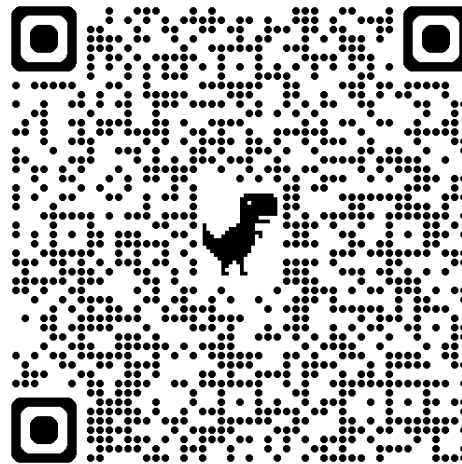
## RCPP - Awarded:

### Stewarding the Working Wild in MT, OR, and CO: Non-lethal Predator Risk Management on Agriculture Operations

The Heart of the Rockies Initiative, and other contributing partners will provide a holistic approach to incentivize producers to implement solutions that benefit land, livestock, and wildlife. This project will support the biologically diverse working lands that produce food and fiber, sustaining both rural and urban communities; enhance ecosystem services including clean water, biodiversity, and carbon storage; and maintain connected lands that provide essential habitat and migratory corridors.

Area of Delivery: West-Slope of Colorado

Lead Partner: Heart of the Rockies, Western Landowners Alliance





# CPW Statewide Habitat and Connectivity Plan

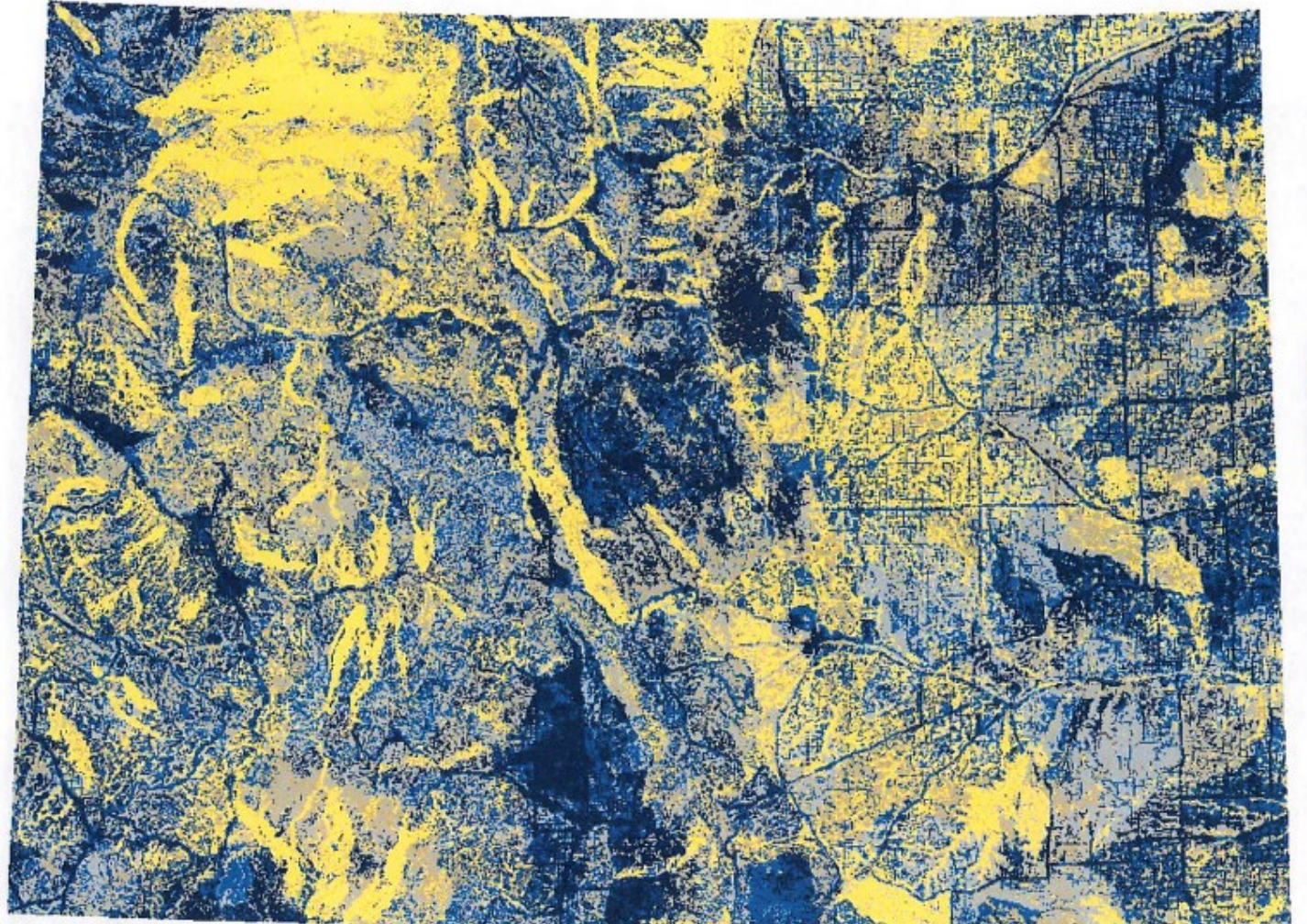
Goal include identifying key locations for CPW to focus habitat efforts.

Colorado Natural Heritage Program support.

Plan completion, late 2024.

Incorporates:

- Climate
- Vegetation Condition
- Intact and Resilient Landscapes
- Collar and Biological Data
- Focal Species: Large Ungulates, Grouse, Native Fishes





# Easement Subcommittee



[This Photo](#) by Unknown Author is licensed under [CC BY](#)



Interested in  
serving on the  
ACEP-ALE  
subcommittee?

---





Natural Resources Conservation Service  
U.S. DEPARTMENT OF AGRICULTURE

# Source Water Protection (SWP)

Robert Murphy, CDPHE



FARM PRODUCTION AND CONSERVATION  
FSA | NRCS | RMA | Business Center



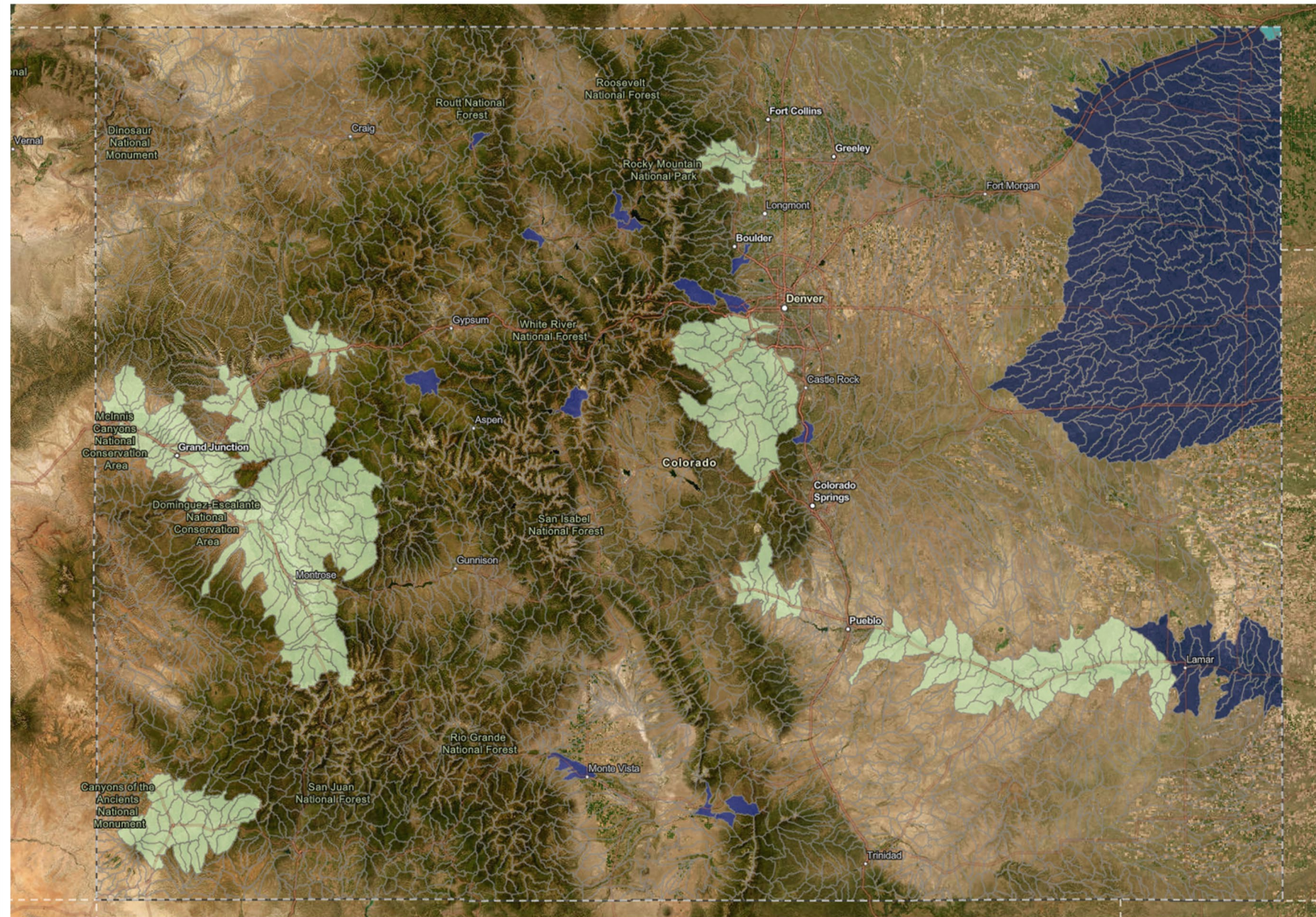


# Natural Resources Conservation Service

U.S. DEPARTMENT OF AGRICULTURE

## FY25 SWPA WBD12 HUCs

- High Priority Area,Both,Both
- High Priority Area,Both,Water Quality
- High Priority Area,Both,Water Quantity/Aquifer Depletion
- High Priority Area,Ground,Both
- High Priority Area,Ground,Water Quality
- High Priority Area,Ground,Water Quantity/Aquifer Depletion
- High Priority Area,Surface,Both
- High Priority Area,Surface,Water Quality
- High Priority Area,Surface,Water Quantity/Aquifer Depletion
- Not Selected







# Urban Agriculture Subcommittee

Nikki Brinson, CSCB &  
Abbey Grey, CACD



[This Photo](#) by Unknown Author is licensed under [CC BY-SA-NC](#)





Natural Resources Conservation Service  
U.S. DEPARTMENT OF AGRICULTURE

## Forestry Subcommittee

Christina Burri, CSFS



# NRCS

FARM PRODUCTION AND CONSERVATION  
FSA | NRCS | RMA | Business Center

[This Photo](#) by Unknown Author is licensed under [CC BY](#)



# Forestry Priorities: Ranking Questions

## 2024 Act Now

Section: Resource Questions*		
Question	Answer Choices	Points
1. Have management unit boundaries been identified and filed confirmed to be operable and accessible	YES	80
	NO	0
2. If Forest Stand Improvement (666) designed to address the Structure and Composition resource concern by enhancing degraded ecosystem function?	YES	80
	NO	0
3. Will Ponderosa Pine be a dominant or co-dominant species in post-treatment conditions?	YES	20
	NO	0
<div>Tie-breaker</div> 4. What is the score on the Gray Index for the Composite Map Theme on the Colorado Forest Action Plan?	80-100	20
	60-79	18
	50-59	16
	<49	10



# Open Discussion

All partners are welcome to share additional thoughts.





# Closing Remarks

Thank you all so much for your time and thoughts!

