



## USDA Natural Resources Conservation Service South Dakota State Technical Committee Meeting

**May 14, 2025 | 10 a.m. Central Time**

Federal Building, Room 300, 4<sup>th</sup> Street SW, Huron, SD

*Join the STC meeting via Microsoft Teams on your computer, mobile app or room device:*

[Join the meeting now](#) Meeting ID: 280 369 721 006 Passcode: c3Ms6wE7

Dial-in by phone [+1 202-650-0123](#), [47696061](#)# Phone conference ID: 476 960 61#

### **AGENDA**

1. **Welcome** - Colette Kessler, Assistant State Conservationist for Partnerships
2. **Opening Remarks** - Tony Sunseri, State Conservationist
3. **Congressional Delegates Updates**
4. **Updates of the USDA Serving South Dakota**
  - **Farm Service Agency (FSA)** – Ryan Vanden Berge, Deputy State Executive Director, Huron
  - **Risk Management Agency (RMA)** - Jeremy Not Afraid, Senior Risk Management Specialist, Billings, MT
  - **Natural Resources Conservation Service (NRCS)** - Tony Sunseri, State Conservationist, Huron
5. **Update of SD Department of Agriculture and Natural Resources** – Bill Smith, Director, Division of Resource Conservation and Forestry
6. **NRCS SD Engineering Update** - James Reedy, State Conservation Engineer, NRCS
  - USDA NRCS Emergency Watershed Protection (EWP) Program
  - NRCS SD Engineering assistance helping landowners
  - Discussion: Conservation Practice Standard 634 – Waste Transfer, within the context of providing assistance to move liquid waste from storage to field.
7. **Ecological Sciences Update, Conservation Planning and Conservation Practices Update** - Jessica Michalski, State Resource Conservationist, Natural Resources Conservation Service
  - News: Early May Forage Production Update and Prediction
  - South Dakota Technical Guide Updates and SD NRCS Ecological Sciences Tools
8. **Workload Update for Wetland Determinations and Highly Erodible Land** - Deke Hobbick, Assistant State Conservationist for Compliance, NRCS
9. **Farm Service Agency (FSA) Conservation Program of the Farm Bill Update** - Owen Fagerhaug, Agricultural Program Specialist, Farm Service Agency
  - Conservation Reserve Program (CRP)
  - Emergency Conservation Program (ECP)

**10. NRCS Conservation Programs of the Farm Bill Updates** - *Val Dupraz, Assistant State Conservationist for Programs, NRCS*

- Environmental Quality Incentives Program (EQIP)
- Conservation Stewardship Program (CSP)
- Agricultural Conservation Easements Program (ACEP)
- Regional Conservation Partnership Program (RCPP)

**11. Partnerships and USDA NRCS Agreements Update** - *Colette Kessler, Assistant State Conservationist Partnerships,*

**12. General Discussion, Questions, Round Robin of Conservation Partners Updates:**

- 
- 
- 

**The next hybrid STAC meeting will be held Wednesday, September 10, 2025. Location TBD.**

---

***Additional information***

**USDA NRCS South Dakota Staffing and Personnel Updates**

-> NRCS South Dakota Web Page: The Personnel Directory can be found under Contact Us  
<https://www.nrcs.usda.gov/contact/state-office-contacts/south-dakota-state-office>

**Subscribe to updates for the USDA NRCS SD State Technical Committee**, please visit [www.farmers.gov](http://www.farmers.gov), then scroll down to “Subscribe to Updates” – follow the menus to find “State Technical Committee” in the topic list. Also, please take the opportunity to consider other topics and geographic locations down to the county level.

Find **archived individual STC Meeting information** at the USDA NRCS SD web page for <https://www.nrcs.usda.gov/events/south-dakota-state-technical-committee-meeting> (Shortened URL: <https://bit.ly/StateTechnicalCommittee>). Please use this link to find the [State Technical Committee meetings recordings on NRCS SD YouTube Channel Playlist](#)

The meeting notifications of the regularly scheduled State Technical Committee (STC) are also distributed via a shared mailbox: [sm.fpac.nrcs.sd.partnerships@usda.gov](mailto:sm.fpac.nrcs.sd.partnerships@usda.gov). Notifications via U.S. Postal Service may be requested by contacting the NRCS State Office Randi Papka [randi.papka@usda.gov](mailto:randi.papka@usda.gov) or calling (605) 352-1200.

*USDA is an equal opportunity employer, provider, and lender*

**USDA**  
United States Department of Agriculture

**SD NRCS**  
**State Technical**  
**Committee**  
**May 14, 2025**

Jim Reedy, SCE

Natural Resources Conservation Service  
[nrcs.usda.gov/](https://nrcs.usda.gov/)



1

**USDA**  
United States Department of Agriculture

**CPS 634 - Waste Transfer**  
**Resource Concerns & Scenarios**

Natural Resources Conservation Service  
[nrcs.usda.gov](https://nrcs.usda.gov/)



2



## Reasons for Today's Discussion

### National NRCS Payment Schedules

#### Scenario Description includes:

"... pumping from the waste storage pond to the field where it is to be applied according to the CNMP."

Natural  
Resources  
Conservation  
Service  
[nrcs.usda.gov](http://nrcs.usda.gov)

3



## Reasons for Today's Discussion

#### Before Situation includes:

"The waste storage structure is separated from the application fields where wastewater nutrients are needed. Soil nutrients in the near fields have high phosphorus levels from over application near the waste storage facility. The current application operation is high in the use of time and energy and may cause water quality concerns as it is not efficient in transporting the waste to the field."

Natural  
Resources  
Conservation  
Service  
[nrcs.usda.gov](http://nrcs.usda.gov)

4



## Reasons for Today's Discussion

**South Dakota NRCS Payment Schedule  
Includes CPS 634 pipeline scenarios, but with  
clarifications...**

Natural  
Resources  
Conservation  
Service  
[nrcs.usda.gov](http://nrcs.usda.gov)

5



## Reasons for Today's Discussion

### Waste Transfer

Code: 634

Practice Lifespan: 15 years

1. **Payment Caps:**
  - a. None
2. **Typical Associated Practices:**
  - a. None
3. **Clarifications:**
  - a. Eligible only for the transportation of manure through the animal waste system, not to empty the system for manure application.
  - b. The "Hard-hose Reel System with Booster incorporated into Traveler" activity is not applicable in South Dakota - **DO NOT USE THIS ACTIVITY IN SOUTH DAKOTA.**
  - c. The "Agitator, Slurry Transfer" activity includes the necessary concrete waste collection and/or pumping structures and agitators. Use Pumping Plant (533) for pumps used to pump wastewater.
  - d. Use the "Gravity flow" activities for waste transfer pipes where the manure is not pumped.
  - e. Use the "Pressure flow" activities for waste transfer pipes where the manure is pumped.
  - f. Use this practice to pay for the pipe outlet from the Waste Separation Facility (632) to the Waste Storage Facility (313).

6

## Reasons for Today's Discussion

**South Dakota NRCS has historically ALWAYS had more funding requests/applications than available funding**

**Competition for funding means we need to rank applications, with emphasis order of:**

- 1. Existing AFO/CAFO operations with primary resource concern of no runoff containment**
- 2. Existing operations with resource concern of mortality containment**
- 3. Existing operations with aging containment that need an upgrade**
- 4. Everything else**

Natural  
Resources  
Conservation  
Service  
[nrcs.usda.gov](http://nrcs.usda.gov)

7

## Current National Policy References

**Title 440 – Working Lands Conservation Programs Manual**

**Part 530.31(B)(1)**

**Conservation treatments included in a conservation plan must improve the identified resource concerns**

Natural  
Resources  
Conservation  
Service  
[nrcs.usda.gov](http://nrcs.usda.gov)

8





## Current National Policy References

### Title 440 – Working Lands Conservation Programs Manual Part 530.403(H)

**Ineligible conservation practices include those:**

**(1) For which the sole purpose is to enhance or protect production without addressing a natural resource concern or providing a corresponding conservation benefit**

Natural  
Resources  
Conservation  
Service  
[nrcs.usda.gov](http://nrcs.usda.gov)

9



## Current National Policy References

### Title 440 – Working Lands Conservation Programs Manual Part 530.405(A)(2)(iii)

**Contract participants may progressively implement conservation practices and activities cited in the CNMP, provided that the following criteria are met.**

- **The conservation practices included in the schedule of operations help address or improve a resource concern and are operable and function as intended when implemented.**
- **The participant follows an existing nutrient management plan or includes in their contract a nutrient management conservation practice that addresses the application of animal waste, unless all of the manure is sold or transferred to another operation.**

Natural  
Resources  
Conservation  
Service  
[nrcs.usda.gov](http://nrcs.usda.gov)

10

## Final Points

- **Current NRCS policy and SD regulations require that AFO's/CAFO's follow a Comprehensive Nutrient Management Plan (CNMP) that ensures proper utilization of livestock nutrients via proper land application**
- **There are no regulatory requirements at play that mandate specific manure hauling/conveyance methods**

Natural  
Resources  
Conservation  
Service  
[nrcs.usda.gov](https://nrcs.usda.gov)

11

## Final Points

- **Primary resource concern is “nutrients/pathogens/chemicals from manure, biosolids or compost applications transported to surface or ground water”**
- **NRCS and SD regulations require a CNMP**
- **Addressed with proper application timing and placement – one method of conveyance vs. the other provides no additional environmental benefit**

Natural  
Resources  
Conservation  
Service  
[nrcs.usda.gov](https://nrcs.usda.gov)

12





## NEWS RELEASE

For Immediate Release

Contact

May 6, 2025

Shala Larson, Public Affairs Officer

605-461-0532 / [Shala.Larson@usda.gov](mailto:Shala.Larson@usda.gov)

### Early May Forage Production Update and Prediction

Huron, SD, May 6, 2025—South Dakota (SD) grasslands continue to face dry conditions as illustrated in the mid-April SD Grassland Productivity Map on the (SD) Natural Resources Conservation Service (NRCS) website under [Range and Pasture](#). Product of the SD Drought Tool, these maps utilize a two-year weighted average of precipitation data to determine a percent of normal production calculation incorporating historical clipping data from across the state. Forage maps relate to grassland forage production and not cropland as the maps will not predict forage quality.

State Rangeland Specialist, Emily Rohrer, shares expertise stating, "As we enter into May, consider various strategies to reduce stress not only to grassland plants, but the livestock and wildlife by scheduling adequate rest periods to allow plants to recover after grazing events. Consider speeding up your rotation, combining herds, or utilizing alternative forages (make sure to test forages prior to turnout for nitrate accumulation)."

There are several upcoming opportunities to learn more about the strategies you can take to improve grazing quality on your operation – even during a dry period. Consider attending the [Young Adult Ranching for Profit Workshop](#) to be held in Faith, SD, June 2-5 (ages 18-30), [SD Rangeland and Soils Days](#) in Belle Fourche, SD, June 10-11 (ages 8-18), or one of the three [SD Grassland Coalition's Grazing Schools](#), the first event is in Wall, SD, June 17-19. For additional recommendations, visit with a local NRCS conservationist, South Dakota State University extension specialist, or consider asking a mentor through the SD Soil Health Coalition's mentoring app: [Growing Connections](#) or seek out the [SD Grassland Coalition's mentoring network](#).

The following resources are also available:

SD NRCS Range and Drought page: [bit.ly/Range\\_Pasture](https://bit.ly/Range_Pasture)

South Dakota Grassland Coalition Drought Planning website: [sddroughtplan.org/](https://sddroughtplan.org/)

National Drought Mitigation Center: [drought.unl.edu/ranchplan/Monitor.aspx](https://drought.unl.edu/ranchplan/Monitor.aspx)

National Integrated Drought Information System: [drought.gov/](https://drought.gov/)

U.S. Drought Monitor: [droughtmonitor.unl.edu](https://droughtmonitor.unl.edu)

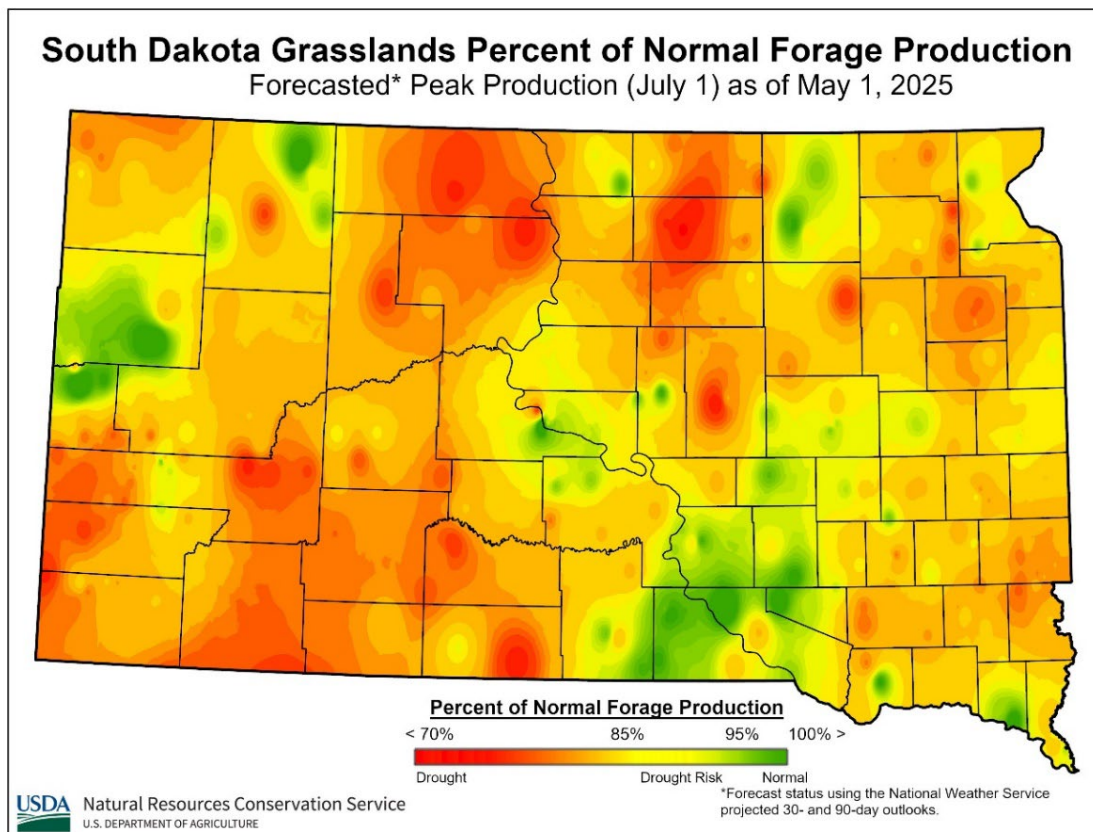
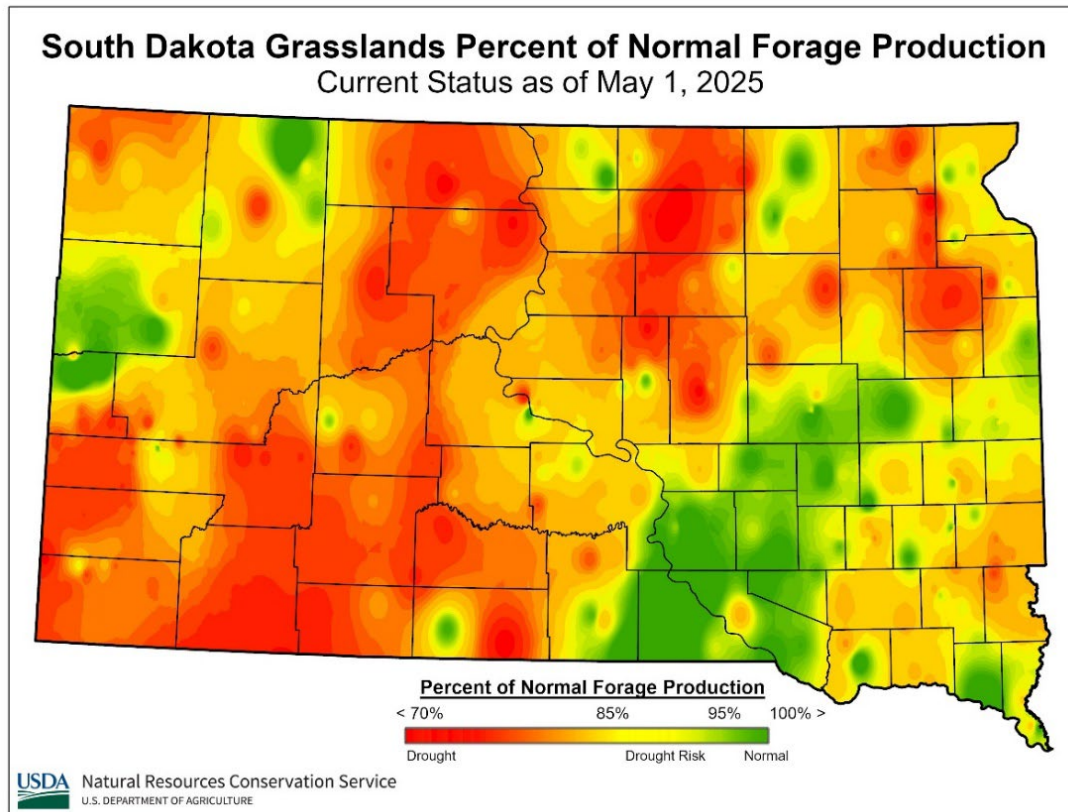
South Dakota State University Extension Drought Resources: [extension.sdstate.edu/drought](https://extension.sdstate.edu/drought)

SD Growing Resilience Web page: [www.growingresiliencesd.com](https://www.growingresiliencesd.com)

SD Grazing Exchange: [www.sdgrazingexchange.com/](https://www.sdgrazingexchange.com/)

###

Visit [farmers.gov](https://farmers.gov), scroll to the bottom of the page, select subscribe, and fill out your information. When choosing topics, make sure to select “State NRCS Grassland Drought Condition Status” to receive these updates.



**South Dakota  
State Office**

200 Fourth Street SW  
Room 203  
Huron, SD 57350

Ph: 605.352.1200  
Fx: 855.256.2565

## **SOUTH DAKOTA TECHNICAL GUIDE (SDTG) NOTICE SD-529**

April 29, 2025

### **Section 1 Updates:**

Section 1 of the Field Office Technical Guide (FOTG) includes general resource references, maps, technical notes, and more. Every so often, these items are revised or updated for clarity or to add more information. The following Technical Notes were updated in April 2025.

**South Dakota (SD) Agronomy Technical Note No. 16 – Cover Crop** has been updated to include the most recent Cover Crop Table 1 Common Species and Properties. A small-scale soil health seeding mix was included under the Pre-Designed Cover Crop Mixes section and a statement was added that the seeding window for cover crops in high tunnels may be adjusted beyond 15 days if conditions within the high tunnel support a successful seeding.

**South Dakota (SD) Woodland Technical Note No. 43 – Ecology and Management for Western South Dakota (SD) Ponderosa Pine** has been updated to include the ecology of ponderosa pine in western South Dakota and ecological restoration treatment options. A glossary was added to the document and the format was updated to better communicate forest management.

**South Dakota (SD) Biology Technical Note No. 20 – Bat House (Design, Installation, and Maintenance)** has been developed to provide additional guidance and knowledge for planners working with producers interested in providing additional habitat needs for bats. This technical note is to be used to assist planners with the proper design, installation, and maintenance of Bat Houses. As more information is available on bat conservation, this tech note will be updated.

**South Dakota (SD) Urban and Small-Scale Technical Note No. 2 - Crop Rotation** has been developed to provide guidance and knowledge for planners and producers regarding crop rotations for specialty crop production. This technical note is to be used to assist planners in understanding specialty crop rotations, botanical crop families, and the various ways crop rotations can be implemented. This technical note can also be provided to producers for their own understanding of specialty crop rotations.

**South Dakota (SD) Urban and Small-Scale Technical Note No. 3 – Common Tools** has been developed to provide a summary overview and descriptions of commonly used tools for specialty crop production. This technical note is to be used to gain a better understanding of specialty crop operations and can be shared with producers for their own knowledge. As more information is available, this tech note will be updated.

**SD Range Technical Note No. 7 – Fence** has been updated. Specifically, the section on page 3, “Brace Assembly Materials” has been updated for clarity and to include square pipe as an option for horizontal brace material.

**SD Range Technical Note No. 9 – Prescribed Grazing** has been updated. The Cover Crop Table 1 has been removed and links to the SD Agronomy Tech Note No. 16 – Cover Crop Technology and SD-JS-340 have been added. Appendix B. Example Drought Contingency Plan has been updated to include language on grazing annual forages. Updates were also made to some hyperlinks.

#### **Section 4 Updates:**

**The CPS Updates:** Practice standards are reviewed and updated by the national discipline lead every five years to maintain technical adequacy. New standards are released when it is determined resource concerns are not being adequately met with existing standards. When a national standard is updated, states have one year to adopt the updated standard and add state clarifications. States can choose to adopt new standards at any time following their release. To minimize impact on field staff, SD releases updated or newly adopted standards twice a year, April and October.

#### **Updated CPS included in this release:**

**Soil Carbon Amendment (336):** This conservation practice standard (CPS) is new to SD. Soil Carbon Amendments are materials derived from plant materials or treated animal byproducts (example: compost, biochar). Materials used as soil carbon amendments should be created by approved methods and require a laboratory analysis of the material to determine application rates and if there are any inherent chemical limitations. A new implementation requirement (IR) (job sheet) (SD-IR-336) was created and the Statement of Work (SOW) was added.

**Conservation Cover (327):** This standard was updated nationally. Several purposes were split to improve clarity. Language associated with the additional criteria was incorporated into the General Criteria section. The SD-CPA-4 ver. 3.6 was updated with the new CPS 327 practice purposes. The Statement of Work (SOW) was also updated.

**Early Successional Habitat Development and Management (647):** This standard was updated nationally in 2022. The only updates for this standard were some minor wording adjustments. SD NRCS added some additional clarifying language to the Criteria section. Several purposes were split to improve the clarity of the document as well as a couple additional purposes were added to improve the functionality of this practice. Reference to Biology Technical Note 15 was also added along with the required use of the SD-CPA-19, Wildlife Habitat Quality Rating Worksheet (WHEG). The documentation requirements document was updated to remove the SD-CPA-58 as a required form.

**Cover Crop (340):** This standard was updated nationally. Soil Health purposes are now listed separately as relating to soil organic matter depletion, aggregate instability, and degraded soil organism habitat. Wording changed to clarify that the cover crop is a different planting in a crop rotation. Clarified additional criteria for soil organic matter when integrating livestock into a soil health management system. Added erosion tools approved for determining biomass requirements. Added a requirement for a contingency plan or alternative cover crop seeding recommendation in the Plans and Specifications section. The Statement of Work (SOW) was updated.

The cover crop seeding tool, SD-JS-340 was updated. Version 2.9 automatically populates the planned seeding window based on the species included in the mix, the frost termination method includes the statement "No Fall Tillage", the sporadic (S) winter survival designation was removed, seeding rates for winter wheat and winter triticale were changed to match cereal rye and cereal rye was designated along with buckwheat as a possible contaminant in wheat. A contingency plan tab was added, a small-scale mix was added, an Urban Table 1 was added. The urban table does not populate the spreadsheet and contains fewer purposes typically identified as concerns by producers using a high tunnel or seeding on a smaller scale. Although not listed, all resource concern purposes could still be applicable. An average seeds per square foot column was also added.

**Woody Residue Treatment (384):** This standard was updated nationally. Language was revised throughout the document to improve clarity. Considerations were organized into similar considerations. The SD version of the standard updated the criteria and plans and specification sections to apply relevant metrics to South Dakota. References were updated by adding relevant publications. The DR (SD-DR-384) was created for clarity. A new implementation requirement (IR) (job sheet) (SD-IR-384) was developed. Most of the required fields can be imported from a completed 000 SD EST Forest Management Plan Template Ver2 when Woody Residue treatment is planned. The Statement of Work (SOW) was also updated.

#### **Additional Section 4 Updates:**

Updated the **SD-JS-590**. Version 2.7 allows for up to 6 custom blends to be created.

Updated the **SD 823 Organic Management IR**, however there is currently no way to update interim documents in CPD-DMS, so the IR document was placed under Ecological Sciences Tool and is named  
000\_SD\_EST\_823\_Organic\_Management\_IR\_2025.

Updated the **666\_SD\_IR\_Forest\_Stand\_Improvement\_2025** in the CPS 666 Folder. This implementation requirement was updated so that most the required fields can be imported from a completed 000 SD EST Forest Management Plan Template Ver2.

Removed the SD-JS-328 from the CPS 328 folder. Renamed the Implementation Requirement **000\_SD\_EST\_Cropping\_System\_IR** and placed it in the Ecological Sciences Tools folder in Section 4 of the FOTG. Use this IR for CPS 328, 329 and/or 345. As a reminder, the RUSLE2 or WEPS generated outputs can also be substituted for this IR.

**Prescribed Grazing (528):** A new document was added to the Prescribed Grazing folder to assist new planners in completing planning requirements for this practice.

**Prescribed Burning (338):** An additional document was added to the Prescribed Burning folder to assist employees in understanding the process of obtaining job approval authority. The new document added is named "Prescribed Burning JAA Flowchart".

**Structures For Wildlife (649):** An additional Implementation Requirement (IR) document was added to the folder to assist planners with Design, Installation, Maintenance, and Monitoring of Bat Houses.

**Annual Forages for Grazing Systems (810):** The Documentation Requirements (DR) has been updated to include language on the need for contingency planning. Please utilize the newest DR (which will be found in Ecological Sciences Tools) until the old ones can be removed due to software issues.

Updated the **812\_SD\_IR\_Raised Beds** document from 2023. The update was made on page 3 where a typo existed in the Installation Table under the Height Column. The example numbers were changed from 10/12 to 0.83/1 to reflect the proper unit of feet when measuring height.

**Conservation Crop Rotation (328):** An additional Implementation Requirement (IR) document was added to the Conservation Crop Rotation folder to assist employees in planning and certification of Conservation Crop Rotation on urban and small-scale operations.

### **Ecological Sciences Tools:**

**000 SD EST Forest Management Plan Template Ver2** updated to improve clarity and reduce redundancy. This tool is required when doing most forestry practices. Informational and instructional guidance was moved to information buttons to increase writing space. Structure was reorganized for clarity and ease of writing. The ability to export the FMP to be input into the Implementation Requirements for CPS 666 and CPS 384 was added.

**000 SD EST 000 SD EST SD Forest Inventory Tool Ver5** updated. This tool can be used when collecting forest inventory for creation of Forest Management Plans and/or certification of forestry practices CPS 666, and/or CPS 383. This tool was updated to include a stand density metric and a site index tab to assist with forestry calculations.



000 SD EST SD-CPA-4 Ver 3.6: This tool was updated to include the new CPS 327 practice purposes.

For additional information, comments, or questions, please contact the following specialists for information:

Laura Bosworth, State Forester  
[Laura.bosworth@usda.gov](mailto:Laura.bosworth@usda.gov)  
(605) 530-3902

Marcia Deneke, State Agronomist  
[marcia.deneke@usda.gov](mailto:marcia.deneke@usda.gov)  
(605) 539-9232 Ext. 103

Emily Rohrer, State Rangeland Management Specialist  
[emily.rohrer@usda.gov](mailto:emily.rohrer@usda.gov)  
(605) 570-2180

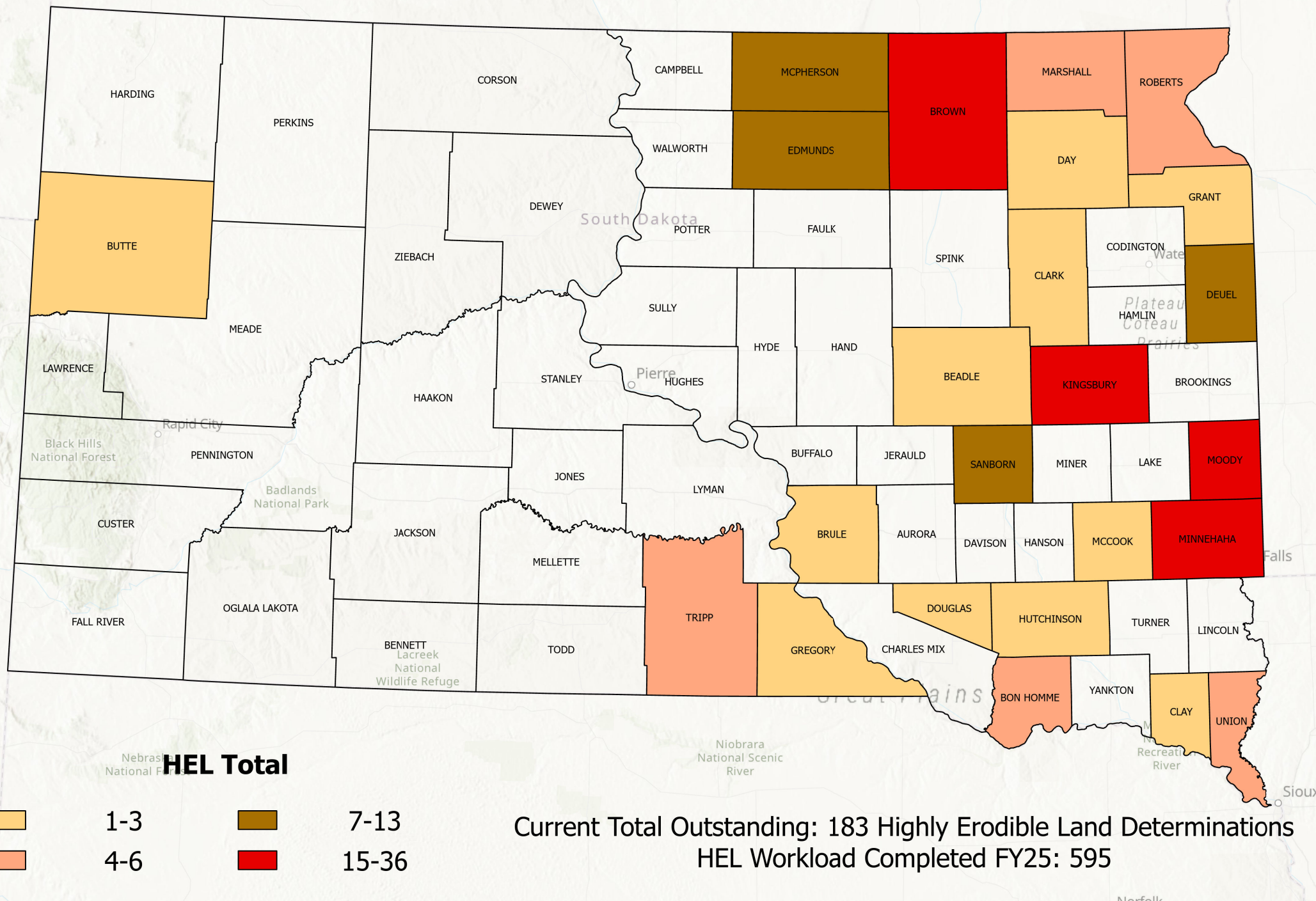
Rachel Lawton, State Urban Conservationist  
[rachel.lawton@usda.gov](mailto:rachel.lawton@usda.gov)  
(605) 220-4748

Brandon Walter, State Biologist  
[brandon.walter@usda.gov](mailto:brandon.walter@usda.gov)  
(605) 570-2181

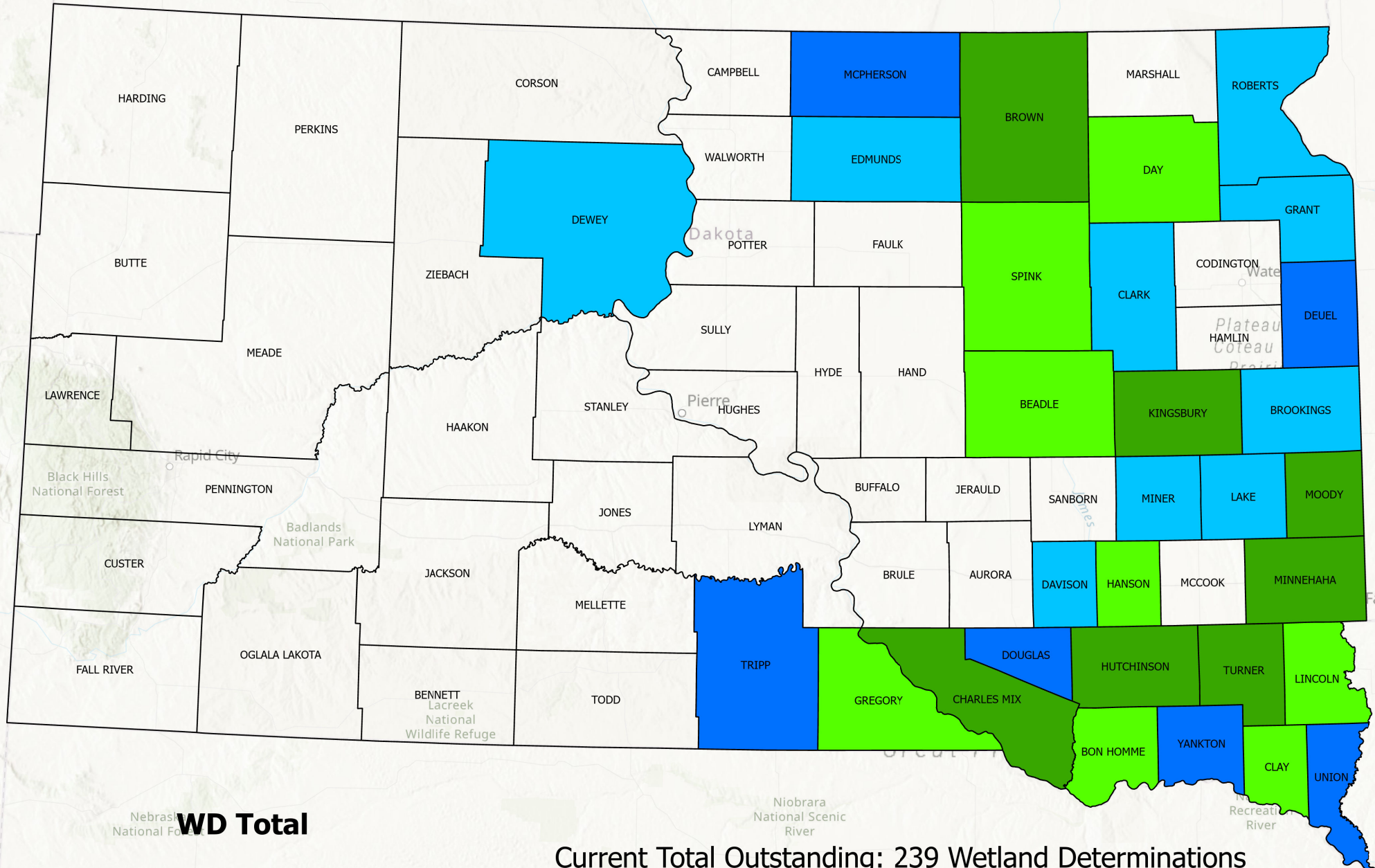


ANTHONY M. SUNSERI  
State Conservationist

# SOUTH DAKOTA HIGHLY ERODIBLE LAND DETERMINATIONS (as of May 8th, 2025)



# SOUTH DAKOTA WETLAND DETERMINATIONS (as of May 8th, 2025)



## WD Total

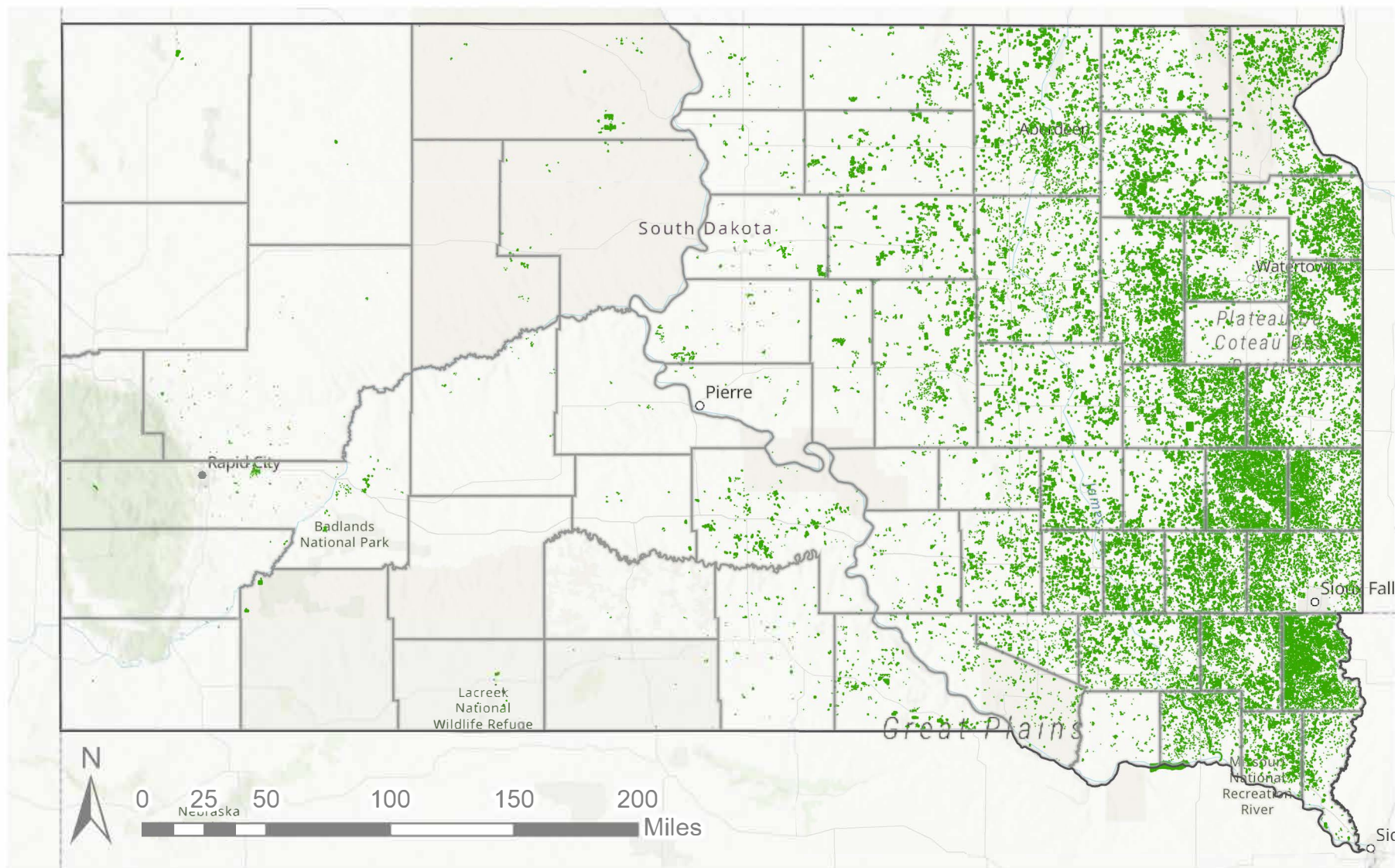
1-3	7-11
4-6	13-31

Current Total Outstanding: 239 Wetland Determinations  
 Outstanding Potential Violations: 52  
 WD Workload Completed FY25: 493



# South Dakota NRCS Certified Wetland Determinations

Total # of determinations: 111,165  
451,235 acres



Values and locations given are the best available data as of 04/05/2025.

Created by: Anne Dunckel GIS Specialist 05/08/2025

**USDA** United States Department of Agriculture



**FY 2025  
CRP Signups**

**Beginning  
May 12, 2025**

**Continuous CRP Signup 63 &  
General CRP Signup 64**

**Farm  
Service  
Agency**  
**[fsa.usda.gov](https://fsa.usda.gov)**

1

**USDA** United States Department of Agriculture

## **FY 2025 CRP Notices**

<b>Notice</b>	<b>Title</b>
CRP-1046	Announcing Continuous CRP Signup 63
CRP-1047	Processing HELI Re-enrollment Offers
CRP-1048	Announcing General CRP Signup 64
CRP-1049	Soil Rental Rate Update for FY 2025
CRP-1050	Continuous CRP Signup Through Approved CREP Agreements
CRP-1051	CRP Soil Health and Income Protection Program (SHIPP) Re-Enrollment Eligibility Criteria for General, Continuous, or Grasslands CRP and CREP

**Service  
Agency**  
**2 [fsa.usda.gov](https://fsa.usda.gov)**

2



## Continuous CRP Signup 63 and General CRP Signup 64 Overview

- Common Policy for both continuous CRP signup 63 and general CRP signup 64
  - Native American Tribal Lands Reminders
  - Soil Rental Rates Published
  - Signup Deadlines
  - Expiring CRP Participant Letter
  - Updated Forms Published
  - Interim Conservation Plans

**Farm  
Service  
Agency**  
3 [fsa.usda.gov](https://fsa.usda.gov)

3



# Common Policy

## Continuous Signup 63 General Signup 64

**Beginning May 12, 2025**

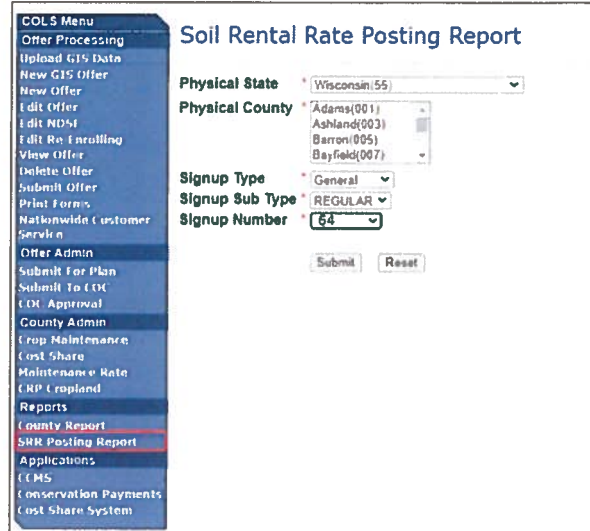
**Farm  
Service  
Agency**  
4 [fsa.usda.gov](https://fsa.usda.gov)

4



## Soil Rental Rates (SRR's)

- Soil Rental Rates have been approved by DAFP.
- SDMS was updated with approved FY 2025 SRR's on May 12<sup>th</sup>.
- The SRR posting report is now available in COLS.
- County Offices will post the report for public display.
- FY 2025 CRP SRR's are available on the FSA CRP statistics website.



**COLS Menu**

- Offer Processing
- Upload GIS Data
- New GIS Offer
- New Offer
- Edit Offer
- Edit NDVI
- Edit Re-Enrollment
- View Offer
- Delete Offer
- Submit Offer
- Print Forms
- Nationwide Customer Service
- Offer Admin
- Submit For Plan
- Submit To CDC
- CDC Approval
- County Admin
- Crop Maintenance
- Cost Share
- Maintenance Rate
- CRP Cropland
- Reports
- County Report
- SRR Posting Report**
- Applications
- CMS
- Conservation Payments
- Cost Share System

**Soil Rental Rate Posting Report**

Physical State: Wisconsin (55)

Physical County: Adams (001), Ashland (003), Barron (005), Bayfield (007)

Signup Type: General

Signup Sub Type: REGULAR

Signup Number: 64

Submit Reset

5 fsa.usda.gov

5

## Notable Changes Impacting Per Acre Rental Rates

	FY 2024 Policy	Policy Change Effective FY 2025
Soil Productivity Index (SPI)	5 Groupings: 0.5, 0.75, 1.0, 1.25, 1.5	3 Groupings: 0.5, 0.75, and 1.0
Inflationary Adjustment	10 percent	0 percent
Climate Smart Incentive	3, 5, and 10 percent	0 percent
CLEAR30 Rental Rate Adjustment	27.5 percent	23.2 percent

Service  
Agency

6 fsa.usda.gov

6



## Continuous Signup 63 and General CRP Signup 64 Deadlines

Date	Action
June 6, 2025	<p>Deadline to submit an offer for Continuous Signup 63 Batch 1 <u>and</u> General Signup 64.</p> <p><b>Note:</b> If allotted CRP acreage remains available after June 6, FSA will continue accepting continuous CRP offers from interested landowners through July 31, 2025, and may be subsequently considered for acceptance.</p>
June 13, 2025	Deadline for all General Signup 64 registers to be finalized.
September 19, 2025	Deadline for NRCS/TSP to complete the conservation plan or interim plan for all accepted Continuous Signup 63 and General Signup 64 offers, obtain signatures on the conservation plan for all signatories on the CRP contract, sign and return the conservation plan to FSA.
September 30, 2025	<p>Deadline for County Offices to obtain all signatures on the CRP contract and for COC or CED to approve CRP-1's and load CRP-1 approvals in COLS.</p> <p><b>IMPORTANT:</b> There is no authority to approve CRP-1's after September 30, 2025.</p>

7 **Agency**  
**fsa.usda.gov**

7



## Expiring CRP Participant Letter – CRP-Notice 1048, Exhibit 1

- Letters are mailed to all CRP-1 participants with contracts expiring September 30, 2025.
- Letters are not contract specific.
- Information about FY25 general, continuous, and grassland CRP signups and Conservation Easements or Working Lands Programs is provided in the letter.
- Participants are also provided an option to allow the CRP contract to expire.
- Participants are advised to contact their local FSA County Office with any questions.

The SharePoint site to access the expired letter report is  
<https://usdagcc.sharepoint.com/sites/FPAC-FSA-CD-County> Under  
 County Documents/Expired and Expiring Contract Letters/2025 Expiring  
 Contract Letters

**Farm  
Service  
Agency**  
8 **fsa.usda.gov**

8

## Interim Conservation Plans

- Interim Conservation Plans **will be authorized** for use in continuous CRP signup 63 (including CREP), general CRP signup 64, and the future announced grassland CRP signup.
- Policy and guidance regarding interim plan completion will be included in a future policy notice.

**Farm  
Service  
Agency**

9

[fsa.usda.gov](https://fsa.usda.gov)

9

# Continuous CRP Signup 63

## Policy

**Farm  
Service  
Agency**

10

[fsa.usda.gov](https://fsa.usda.gov)

10



## Continuous Signup 63

Beginning May 12, 2025, producers may submit non-CREP and CREP continuous SU63 offers for new and expiring CRP acreage.

*If interested, producers with unapproved continuous signup 61 offers may submit a new offer under continuous signup 63.*

The effective start date for ALL continuous SU63 offers will be no earlier than October 1, 2025.

*Note: Producers may defer the effective start date up to 6 months for new land according to 2-CRP, subparagraph 213 B.*

**Farm  
Service  
Agency**

11 [fsa.usda.gov](https://fsa.usda.gov)

11



## Continuous Signup 63 Offer Batching

FSA will batch **all** continuous CRP offers, including CREP, as follows:

- Accepted on a non-competitive first-come, first-serve bases
- Placed in a batch process to ensure program enrollment levels do not exceed the 27-million-acre statutory cap.
- Approved by COC following notification from the National Office of acceptable offers through a future policy notice.

### Enrollment Types Subject to Batching

Continuous  
CREP  
CLEAR30  
FWP  
HELI  
SAFE

**Farm  
Service  
Agency**

12 [fsa.usda.gov](https://fsa.usda.gov)

12



## Continuous Signup 63 Offer Batching

County Offices will continue to take continuous signup offers after June 6, but no later than July 31, 2025.

**Farm  
Service  
Agency**

13 [fsa.usda.gov](https://fsa.usda.gov)

13



## Continuous Signup 63 Incentives

- **Rental Rate Incentives:**
  - Water Quality Incentive: 20 percent
  - CLEAR30 Rental Rate Adjustment: 23.2 percent
- **Maximum Payment Rates:**
  - \$300 per-acre for non-CREP continuous CRP
  - \$380 per-acre for CLEAR30
- **Signup Incentive Payment (SIP): 32.5 percent**
- **Practice Incentive Payment (PIP): 50 percent**

### **CREP Signup Incentives**

Refer to policy provided in FSA State Amendments to 2-CRP for applicable CREP signup incentives.

**Farm  
Service  
Agency**

14 [fsa.usda.gov](https://fsa.usda.gov)

14

# General CRP Signup 64

May 12 – June 6, 2025

**Farm  
Service  
Agency**

15 **fsa.usda.gov**

15

## General Signup 64 Maximum Payment Rate

- The maximum payment rate limitation for general CRP signup offers is \$240 per acre.

**Farm  
Service  
Agency**

16 **fsa.usda.gov**

16





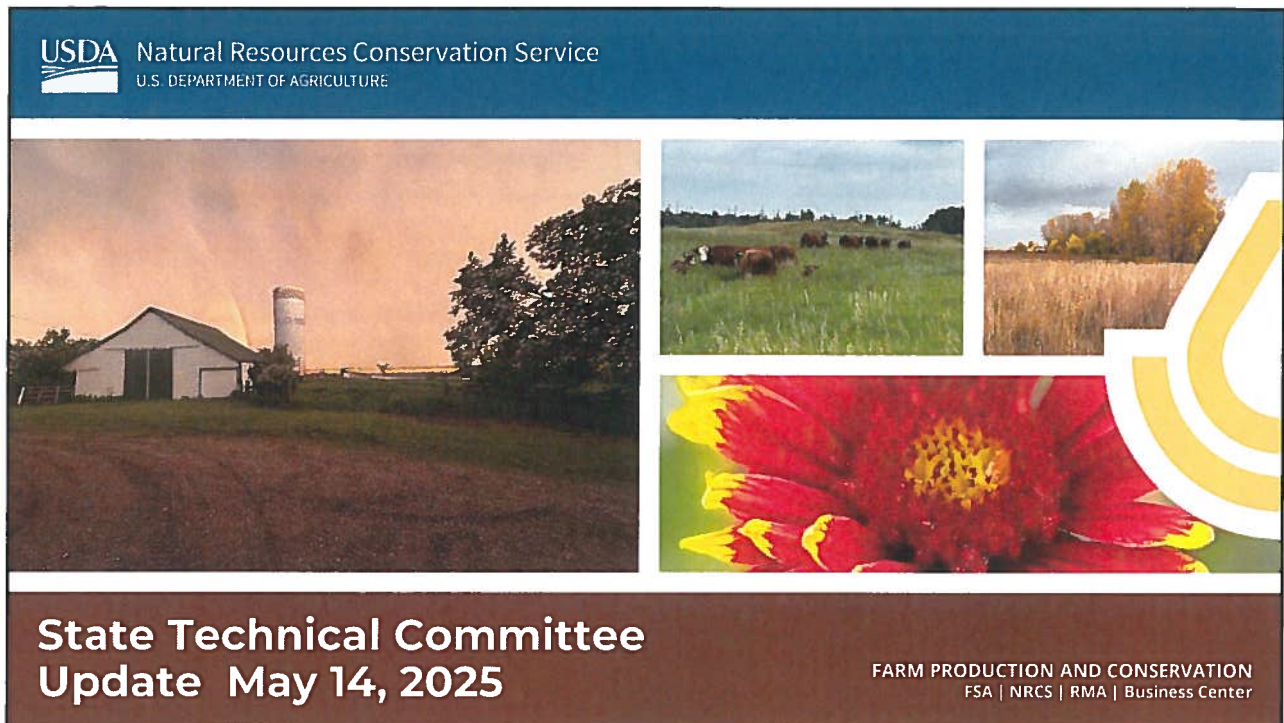
## General CRP Signup 64 EBI

- Included in Notice CRP-1048
- There are no changes from the previous general signup's EBI

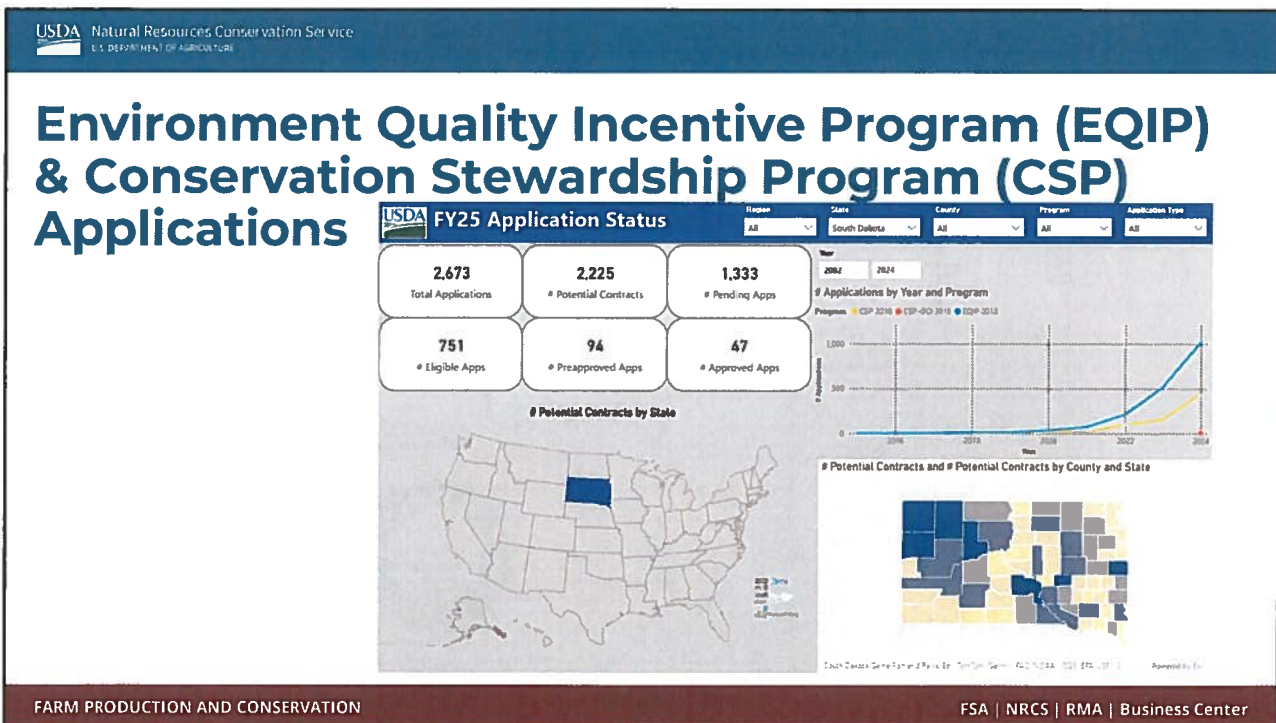
Factor	Points
N1: Wildlife Habitat Cover Benefits	0 to 100
N2: Water Quality Benefits from Reduced Erosion	0 to 100
N3: On-Farm Benefits of Reduced Erosion	10 to 100
N4: Enduring Benefits	0 to 50
N5: Air Quality Benefits	3 to 45
N6: Cost	TBD after signup

**Farm  
Service  
Agency**

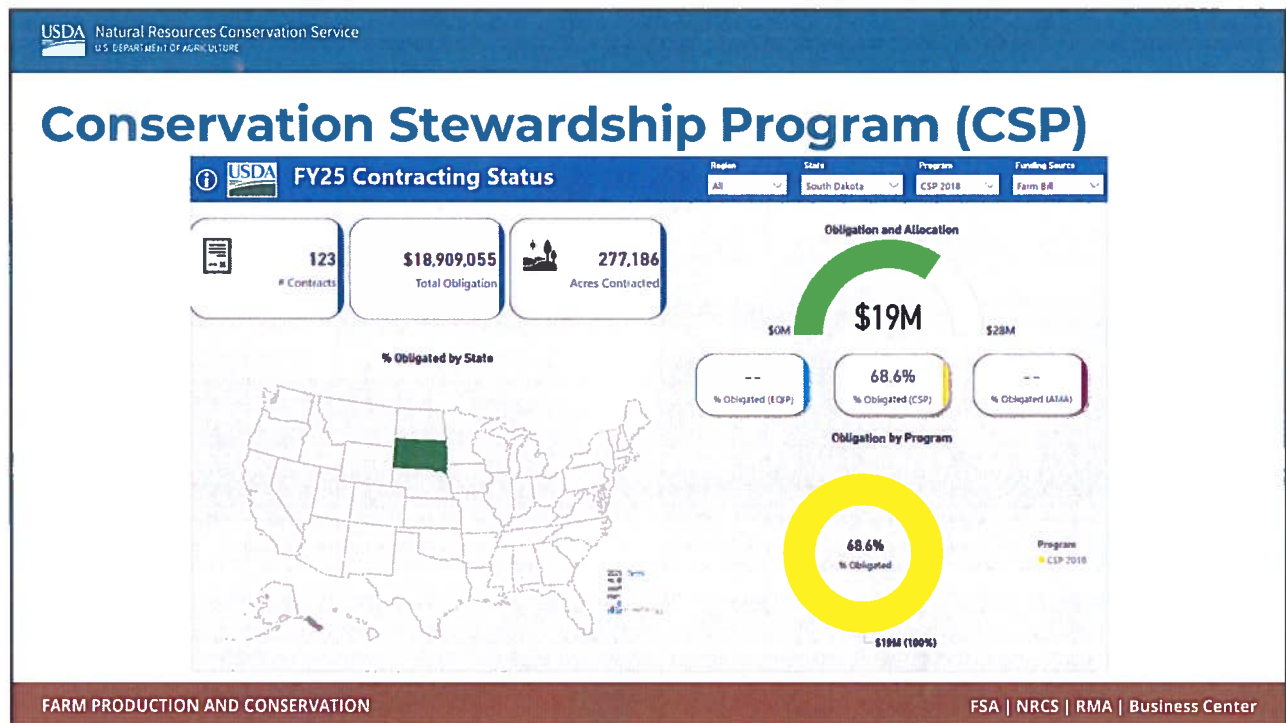
17 [fsa.usda.gov](https://fsa.usda.gov)



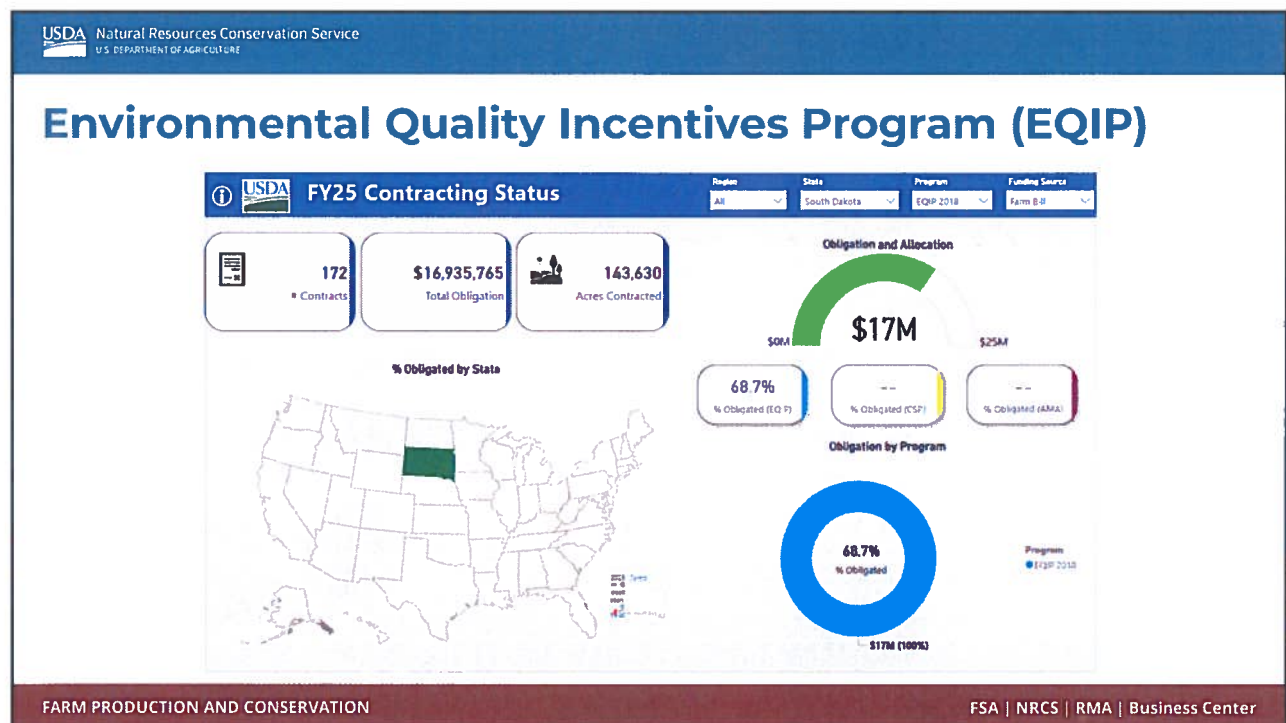
1



2

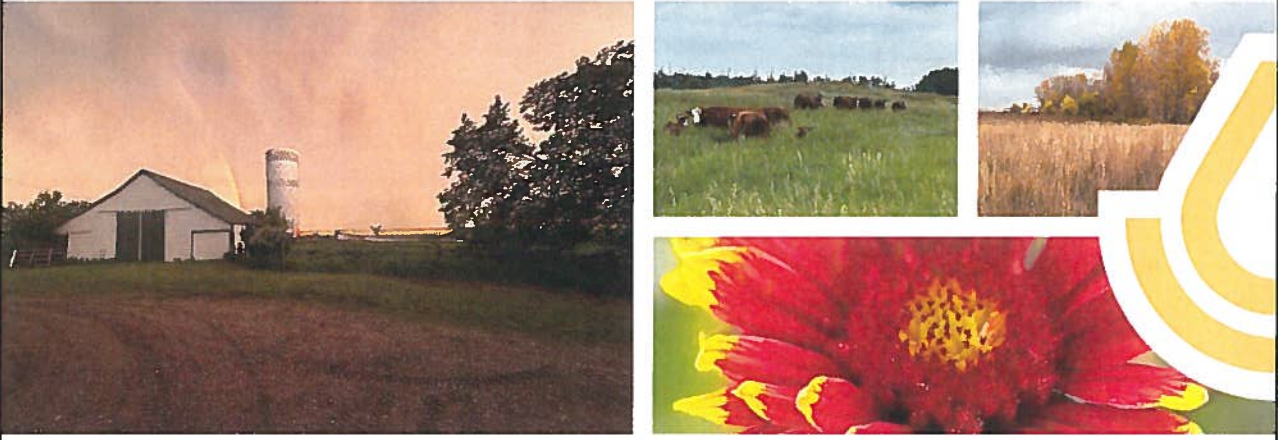


3



4

USDA Natural Resources Conservation Service  
U.S. DEPARTMENT OF AGRICULTURE



**Regional Conservation Partnership Program (RCPP)**

FARM PRODUCTION AND CONSERVATION  
FSA | NRCS | RMA | Business Center

5

USDA Natural Resources Conservation Service  
U.S. DEPARTMENT OF AGRICULTURE

## Project status update

- **Projects Unpaused:**
  - **Classic RCPP**
    - 1853 – Big Sioux Watershed Project (Minnehaha County CD)
    - 2069 – BFRWP Irrigation Efficiency and Soil Health (BFRWP)
    - 2276 – Lewis & Clark/Lower James River WQ Project (James River WDD)
    - 2391 – Northeast South Dakota Glacial Lakes Project (Roberts County CD)
    - 2406 – Building Ranch Resiliency in SD and NE (WWF)
    - 2743 – Conservation Easements in the Black Hills of SD (SDALT)
    - 2954 – Conservation Easements in the Northern Great Plains of SD (SDALT)\*
  - **AFR RCPP**
    - 2189 – Scaling Soil Health in the PPR (Ducks Unlimited)
    - 2644 – Expanding Soil Health Through Carbon Markets (ACE)
    - 3036 – South Dakota Grasslands Initiative (Ducks Unlimited)\*
    - 3272 – Making Sure Every Acre Counts (SDSU)\*\*
    - 4154 – Tribal Buffalo Restoration in the Northern Great Plains Region (ITBC)\*
      - \* IRA Funded    \*\* TA released

FARM PRODUCTION AND CONSERVATION

FSA | NRCS | RMA | Business Center

6



## Project status update

### ■ Projects paused

#### ■ Classic RCPP

- 3809 – SD Easement Project (TNC) \*
- 3898 – Accelerating Rx Fire in SD (PF) \*
- 4253 – Native Nations Grassland Restoration in NGP (BNGA)
- 4325 – BFRWP Irrigation Efficiency and Soil Health (BFRWP)

#### ■ AFA RCPP


- 3290 – Agropur Dairy Producers BMP (Agropur) \*
- 3535 – Expanding Soil Health Through Carbon Markets (ACE) \*
- 3557 – Cultivating Sustainability (SWO) \*
- 3791 – Second Century Working Lands & Woody Habitat Program (2<sup>nd</sup> Century Habitat Fund) \*
  - \* IRA Funded
  - Total Funding - \$98,104,292
    - TA - \$25,107,989 FA - \$72,996,303

## National Funding Opportunity?

- No Date Yet



USDA Natural Resources Conservation Service  
U.S. DEPARTMENT OF AGRICULTURE



**Agricultural Conservation Easement Program (ACEP)**

FARM PRODUCTION AND CONSERVATION  
FSA | NRCS | RMA | Business Center

9

USDA Natural Resources Conservation Service  
U.S. DEPARTMENT OF AGRICULTURE

## Looking Ahead to FY 2026


- Pending final guidance on paused funding source
- Collecting feedback from FY2025
  - Challenges and Successes
- Collect feedback from local work groups on priorities
- Update ranking
- Farm Bill

FARM PRODUCTION AND CONSERVATION



FSA | NRCS | RMA | Business Center

10





Natural Resources Conservation Service  
U.S. DEPARTMENT OF AGRICULTURE



## Questions?

FARM PRODUCTION AND CONSERVATION  
FSA | NRCS | RMA | Business Center