



Iowa Bulletin: 440-25-06

Date: April 17, 2025

Subject: 440-25-06 – Regional Conservation Partnership Program (RCPP) and Land Management and Rental (LMR) Classic Projects.

Action Required By: September 5, 2025

Purpose: To provide guidance for administering Regional Conservation Partnership Program (RCPP) Land Management and Rental (LMR) Classic projects.

Expiration Date: September 30, 2025

Background: RCPP projects fall under two categories: RCPP Classic and RCPP Alternative Funding Arrangements (AFA). This bulletin addresses only RCPP Classic LMR Producer Projects (non-easement).

Under RCPP - Classic, NRCS enters into Land Management and/or Rental contracts directly with producers to address project resource concerns on their land. RCPP Programmatic Partnership Agreement (PPA) outlines the goals and objectives of each project, providing resource concerns (RC) to be addressed within specified project area, eligible land uses, and identified practices. See section A of this bulletin for individual project guidance (RC, eligible land uses, eligible practices, and rental agreements if applicable).

Explanation: This bulletin provides Iowa program guidance, eligibility requirements, and deadlines for RCPP18 Classic. Planners must also follow guidance provided in 300 NI Part 315 Regional Conservation Partnership Program Manual Contract Obligation and Management Subpart A - Process and continue to follow policy in 440 CPM Part 530, "Working Lands Conservation Programs Manual" and Part 531 "Regional Conservation Partnership Program" as applicable.

Classic - RCPP classic projects build upon traditional covered program authorities (EQIP/CSP/ACEP). Under RCPP Classic projects NRCS directly manages all RCPP financial assistance (FA) awards to producers (through ranking process), utilizing partner involvement through partner contributions or partner-provided technical assistance (TA).

Land Management - Conservation practices or activities that include land improvement, management, or restoration, in addition to land treatment activities. RCPP Classic projects utilize Iowa Practice Scenario Booklet, see attachment A of this bulletin for practices eligible within each project.

Land Rental - NRCS will offer land rental payments through rental activity if authorized through the programmatic partnership agreement (PPA). If a participant is eligible for a rental payment this will be included in estimated cost for the application. Rental payments will be added to the PreApproval when scheduling agreement items (Practice Code: RFRN); 530.520A RCPP Rental Agreement Worksheet must be completed and signed by conservation planner every year when certifying practice completion (prior to payment).

Program Implementation: NRCS manages LMR contracts using Conservation Desktop (CD) Applications and Agreements. RCPP is the first program to use this method for processing an application into a contract. Business Tools is diligently working to address any issues that arise and keep Field Offices up to date of errors or workarounds required.

Program Support Materials: provided on Iowa SharePoint under programs tab, links to recorded training events are provided on page 1. FY25 training events will be provided for bulk obligation process, payments, modifications, and additional CD functionality as it becomes available.

Iowa training Links:

Application through [FY25 CDAA Application through Obligation](#)

Obligation Process: [FY25 RCPP Training & Materials](#)

Payment process: [CDAA Payment Process for RCPP18](#)

Modification Process: [FY25 CDAA Modification Training](#)

Additional resources visit Iowa SharePoint > Programs > RCPP18: [FY25 RCPP Information](#)
[FY25 RCPP Trainings and Materials](#)

Any additional training provided in FY2025, updated training information will be housed within: [FY25 RCPP Trainings and Materials](#)

RCPP LMR projects and ranking pools FY2025: Table 1

Projects ID	Project Name	Funds Available FY25	Ranking pool Name
1894	Turkey River Watershed Partnership	Mods Only	N/A
2696	Innovative Conservation Agriculture (Allamakee/Clayton)	Mods Only	N/A
1896	Iowa Systems Approach to Conservation Drainage	Yes	1896 LM Producer FY25
1976	North Raccoon Partnership for Soil and Water	Yes	1976 LM Producer FY25
2266	Midwest Ag Water Quality Partnership	Yes	2266 LM Producer FY25
2374	Cedar River Source Water Partnership	Yes	2374 LM Producer FY25
2448	SE Iowa Watershed Partnership	Yes	2448 LM Producer FY25
2570	Floyd River Water Quality Partnership	Yes	2570 LM Producer FY25
2857	West Nishnabotna Water Quality and Infrastructure Partnership	Yes	2857 LM Producer FY25
**** New in FY25 ****			
2881	Driftless for Wild & Rare phase 3 (LMR)	Yes	2881 LMR Producer FY25
2963	Protect Rathbun Lake (LMR)	Yes	2963 LMR Producer FY25
3367	Connecting Wildlife Habitat by Integrating Conservation Corridors (IRA funds)	Yes	3367 LM Producer FY25
3374	Improving Grassland Health and Connecting Resilient Land (IRA Funds)	Yes	3374 LM Producer FY25

RCPP Applications Requirements: All applications will be entered into CD under the appropriate sign up based on the date the applicant signed the program application. Only one signed RCPP/EQIP application (NRCS-CPA-1200) is required, showing the applicant signed up by the cutoff date. However, each individual RCPP project application does require a separate application number in CDAA (utilize the same practices schedule for each participant, even if ranked in multiple ranking pools, with multiple application numbers, across multiple programs). All applications must utilize the current version of NRCS-CPA-1200 dated October 2024.

One cost list is being utilized for all RCPP Projects in FY25 and is the same cost lists as regular EQIP. **There are two costs lists in CDAA for RCPP, each cost list is the same. The cost lists do not include all the RCPP project numbers. The conservation planner can select either cost list for any preapproved RCPP application.**

Eligibility: Field Offices must verify that all RCPP LMR producer contract participants comply with the producer, land, and program eligibility requirements in 440-CPM-530-C and 530.502. *Same as EQIP eligibility requirements.

Preapprovals: RCPP PreApprovals will be sent out approximately two weeks prior to EQIP PreApprovals. This is to eliminate application duplication between applications frozen lists sent to lead project partners, who are making allocation decisions. It is imperative conservation planners follow state guidance on practice schedule creation for applications that are ranked in multiple fund pools, across multiple programs. PreApproved applications will display as full or partial funding, depending on practices. Practices not selected may be eligible for funding in other ranking pools. Note: no RCPP PreApprovals will be unselected in SAT until all PreApprovals are sent out Statewide for EQIP.

First and second round RCPP PreApprovals will be sent out statewide via email and will include guidance for conservation planners to move forward with contract obligations. Conservation planners will reference:

- PreApprovals list sent via email (excel spreadsheet exported from SAT).
- 530.141C Intent to Proceed letter
- 530.142E Conservation Program Application Checklist
- 530.143C Program Eligibility matrix
- State and National Bulletins along with state training document/recordings

ACT NOW selections will be made daily for eligible ACT NOW project categories while funds are available. APS or RCPP-RC Specialist will send an email to Christine.Evans@usda.gov when applications have been ranked and submitted with application number, ranking pool, and category to be selected for ACT NOW. If there are more applications in a category then what can be selected due to fund availability, then those applications will be selected during regular signup periods (1st or 2nd round) or will be selected as additional 1st round selections or additional 2nd round selections, selected by highest ranking applications to lowest.

Ranking Pools with Applicable ACT NOW Categories will be labeled as ACT NOW at the category level in Conservation Assessment Ranking Tool (CART). ACT NOW will be available until ACT NOW sign-up closes or funds are exhausted. Please use this Bulletin, project rankings documents, and CART/SAT to view which categories within a project have applicable ACT NOW process. Ranking thresholds for all 2374, 2266, 1896 RCPP ACT NOW Categories is 10. First round selections were made in project 1976 in the category "All Other Primary Practices" on 1/24/2025. There will be no selections made via ACT NOW in 1976 within the category All Other Primary Practices in FY25. There may be selections made via ACT NOW within Constructed Wetland (ACT NOW), Denitrifying Bioreactor (ACT NOW), and Saturated Buffer (ACT NOW) if funds are available to support selections, ranking threshold is 10. Project 2448 will have ACT NOW for the remainder of FY2025 with a threshold of 20 and an allocation of \$800,000.

PreApprovals will be sent to applicable counties (ug-IACOUNTY-nrcs, UG-IACOUNTY-cd), carbon copy to: APS/RCPP-RC, ASTC-FO, ASCT-Programs.

Any changes in cost estimates above normal rounding must be approved by RCPP Program Manager, before adding money into a preapproval. RCPP projects operate on a fixed budget. Lead Partners for each project make selections based on projected allocation for the fiscal year, or NRCS application period, based on annual project outcomes.

Contract Development Requirements

Conservation Planners must manually record the following information in the CD Applications and Agreements module as appropriate:

- Participant self-certification of historically underserved status.
- Payment shares, if applicable.

CD uses subsidiary data from the Farm Service Agency to automatically check client eligibility; however, it does not check if Form CCC-902 requirements are met. Validate the information in CD with the subsidiary data for all client eligibility criteria. 440 NI 324 provides guidance for CCC-902 filing requirements and business tool processes; exhibit 324.11 provides CD Automation supporting review of Form CCC-902 Filing Requirement for NRCS Program Applicants and Participants.

Contract Length and Limitations: CD does not currently enforce contract length rules and contract limits or restrictions. Planners must ensure the expiration dates do not exceed the maximum allowed; Iowa has set a 5-year maximum for all RCPP/EQIP planned contract items; this allows eligible practices to be planned for a maximum of 5 years within a contract. Planners must also manually calculate and enter applicable payment caps when creating agreement items in CD. These caps ensure the contract does not exceed the applicable contract limits. Follow guidance in 440-530.406 C. (2) Contract Limitations. Note: RCPP does not have payment limitations.

Contracts associated with RCPP projects funded under the Inflation Reduction Act (IRA) authority are subject to additional contract length restrictions to ensure contracts are completed by September 30, 2031; this affects 3374 Improving Grassland Health and Connecting Resilient Land (Ringgold Co.) and 3367 Connecting Wildlife Habitat by Integrating Conservation Corridors.

States must generate the NRCS-CPA-1155 and NRCS-CPA-1202 documents in CD before obtaining participant signatures (300 NI 315 Subpart A). Individual contract participants must sign all contract documents on the same day (NRCS-CPA-1155, NRCS-CPA-1202, and NRCS CPA-1202 Appendix). Multiple contract participants can sign on different days; the participant signature date entered in CD will be the last participant signature date. All contract participants listed on the NRCS-CPA-1202 must be included on the NRCS-CPA-1155 for RCPP obligations. Iowa wants to make the bulk obligation review process as easy and seamless as possible for those reviewing contracts.

Field and Area Offices must follow the Iowa Delegation of Authority for Contract Development and Obligations of RCPP LMR applications. The NRCS approving official must sign contracts in CD. Selecting "obligate" in CD will attach the official's signature to forms NRCS-CPA-1155 and NRCS-CPA-1202.

Note: NRCS vendors are the only vendors that will be used for LMR producer contracts beginning in fiscal year (FY) 2024. The CD Applications and Agreements module will no longer allow using vendors established and managed outside of CD (e.g., PVND and CCR vendors). Prior year obligations (FY22 & FY23) may continue to use vendors established outside of CD for payment purposes.

Due to ongoing development of CD, there is currently no integration with Financial Management Modernization Initiative (FMMI) for obligating RCPP LMR contracts. No integration with FMMI means all contracts obligated in CD must be manually submitted to National via Bulk Obligation process for funds to be committed to each agreement/contract.

In addition to the pre-obligation reviews and second-level obligation reviews required in 440 CPM § 530.41(C)(3), 530.41(E), and 530.505(D). Field offices must complete the RCPP LM and Rental Producer Contract Preobligation

Checklist in exhibit 530.520D before contract obligation. The area office must conduct preobligation quality assurance reviews for each funding period by reviewing all approved applications and documenting the results in the RCPP LM and Rental Producer Contract Preobligation Checklist. Guidance in subpart H, section 530.71A(3), does not apply to LMR. Each bulk obligation package must utilize "RCPP18 LMR Producer Contract CD Transactions Obligation Checklist," to show that all required documents are in the Bulk Obligation Package. Once the Field Office has an active agreement in CD, staff must complete following actions within 5 business days of contract obligation and within the quarter the agreement was executed:

- Prepare an obligation package using the "RCPP18 LMR Producer Contract CD Transactions Obligation Checklist," and the "Accounts Payable Services Branch Submission Checklist". The obligation package must be saved as a single PDF with the naming convention, "[Application ID] _Obligation Package."
- Upload the package into the Document Management System under Category "other" and document type "other agreement."
- Once uploaded the Area Office (AO) or designated staff must review the bulk obligation package in its entirety before requesting State Office review of package (including but not limited to verification contract signatures and dates are accurate, vendor information is correct, and all information matches CDAA). Vendor errors account for 90% of all returned packages to AO.
- Send email to Christine.Evans@usda.gov and Scott.Breach@usda.gov subject line "[Application ID]_Obligation Package."

State Program Manager will send Bulk obligation report to national bulk obligation team for review. After an obligation package is reviewed and funds are recorded in FMFI, NHQ will populate FMFI Document number in CD and send an email notifying states when obligation is complete (funds posted to FMFI). This email notification is forwarded to APS/RCPP-RC Specialist. Once FMFI documentation number is recorded payments to contract participants can begin.

Note: contract participants can begin implementing practices as soon as a contract is obligated in CD or sooner if an Early Start Waiver has been approved. However, payments cannot be made for those practices until FMFI DOC # is returned **from National Bulk Obligation Team**.

Follow-up actions: request from national bulk obligation team, "issue found" with obligation package, will be forwarded to applicable APS/RCPP-RC and request must be completed within 3 business days, including a new obligation package uploaded to CD DMS for review.

Bulk Obligation Training, Reviews, and Quality Assurance

Area Office must provide additional training to supplement State Office training and conduct quality assurance reviews to reduce the number of obligation packages returned for corrections. Preparing and reviewing manual obligations require significant resources at all levels. Ensuring submissions are completed correctly will reduce unnecessary delays in processing requests and reduce the number of packages returned to the field for corrections.

RCPP Payment and Modification Process:

For contracts obligated outside a financial contracting system, NRCS collaborates with the Farm Production and Conservation (FPAC) Business Center to manage payments and modifications. All obligations contracted through the bulk obligation process must also submit payment and modifications packages through Service Now (SNOW) for a contract holder(s) to receive payment (or for changes to contract obligation, payment shares, expiration date, etc.).

Continue to follow policy in Title 440 Conservation Programs Manual, Part 530 "Working Lands Conservation Programs Manual" (440 CPM 530), as applicable. Use Iowa training documents, recordings, PowerPoint slide decks, examples, and temporary guidance for troubleshooting and workarounds for payments and modifications in CDAA.

Guidance for contracts that have had payments and modifications completed outside of CDAA is forthcoming. These contracts are required by NHQ to be reconciled by June 15, 2025. Reconciliation consists of updating CDAA record for an agreement to match FMFI records. It is preferred that contracts are reconciled before performing any actions outside of CDAA that may further complicate the reconciliation process. However, exceptions will be made on a case-by-case basis by State Office Program Manager and/or Business Tools Coordinator.

Processing Payments: NRCS planners should process payment applications and generate Form NRCS-CPA-1245, "Practice Approval and Payment Application" within CDAA. **Only in rare and unusual circumstances will payments be allowed to be completed outside of CDAA; those situations will be evaluated on a case-by-case basis. In these rare cases, where a payment information cannot be entered within CDAA manually complete the NRCS-CPA-1245 available on eForm or on Iowa SharePoint. Planners and program support specialist** must pay close attention to fiscal year and calendar year deadlines for certifying practices and approving payments. Submissions to FPAC Business Center are subject to any quarterly and end of Fiscal Year deadlines and other process requirements, such as accruals, published in current and future FPAC directives.

Note: CD does not have a “minor change” option. Any contract increase, including those under \$1,000 per contract item number (CIN), requires the field office to complete the modification process prior to preparing a payment application. States must not combine a request for modification with a request for payment. If a contract requires both, submit the modification request first.

Once a payment is approved by District Conservationist a payment package must be assembled and submitted to Des Moines within 5 Business Days and within the quarter it is approved:

- Prepare a payment package using the “RCPP18 LMR Producer Payment Submission Checklist” and the “Accounts Payable Services Branch Submission Checklist”. The payment package should be saved as a single pdf with naming convention “[Agreement ID] _Payment Package.”
- Payment Package should be reviewed for correctness and emailed to Christine.Evans@usda.gov and Scott.Breach@usda.gov with subject line “[Agreement ID]_Payment Package.”
- The payment package will be reviewed, logged, and sent to FPAC Business center via ServiceNow (SNOW) to be processed directly from FMMI.
- The FPAC Business Center will send an email confirmation after the payment is processed that includes a FMMI invoice number. The FMMI invoice number is entered into the CDAA payment application module to complete the payment record in CD. This step is required for CIN status change to “Paid” in CD.
- States must add a copy of the email confirmation to the official participant case file and upload a copy to DMS, along with the payment package that was submitted to SNOW.
- If Area Program Specialist (APS) receives an incomplete notification from FPAC Business Center, follow the instructions described in the email for corrective actions.

The Area Office or delegee is responsible for performing reviews and verifications before submitting the payment package to Des Moines for processing.

Processing Modifications:

NRCS planners should process modifications and generate Form NRCS-CPA-1156 “Revision of Plan/Schedule of Operations or Modification of a Contract” and NRCS-CPA-152 “Conservation Program Contract Transfer Agreement” utilizing CDAA. Only in rare and unusual circumstances will modifications be allowed to be completed outside of CDAA; those situations will be evaluated on a case-by-case basis. In these rare cases, where a modification information cannot be entered within CDAA manually complete the Form NRCS-CPA-1156 and/or NRCS-CPA-152 available through eForms. All Modifications features are available within CDAA except for partial land transfers (for new participant). Modification of the original contract will be done in CDAA, but until functionality exists the new contract for new owner/operator will be done outside CDAA manually. Once this functionality becomes available, it be required to complete all steps of the partial land transfer in CDAA.

In the rare instance a manual modification is need outside of CDAA: do not enter unmodified CINs into Form NRCS-CPA-1156. Fill out the 1156 completely, all modified CINs must include all applicable Tract and Field numbers that will remain eligible in the contract line item. Record the basis for the modification in the appropriate box on the form. Manually completed modifications must be numbered sequentially, starting with 1 for the first modification.

All contract obligation increases require approval from financial management staff documented on the “Funding Availability and Verification” (FAV) Worksheet, prior to the NRCS obligating official (District Conservationist) approving the 1156. The FAV approved request must be for the exact amount of the modification increase in obligation; District Conservationist must verify FAV increase matches the Accounts Payable Service Branch (APSB) Submission Checklist BEFORE approving the modification in CDAA. FAV request and approval This is to ensure the increase in funds does not exceed the remaining unobligated LMR funding in the project. Funds must also be available in the budget period/year of the original obligation.

Note: It is important to identify the correct “Work Breakdown Structure” (WBS) code and the correct budget period on the Accounts Payable Services Branch (APSB) Checklist to support contract modifications, this becomes especially important when changing obligation amounts and obligation increases. Conservation planners will work with their local Program Support Assistant (PSA), Area Program Specialist (APS) and/or RCPP – RC specialist for assistance with completing APSB Checklist, FAV worksheet, and for assembling modification packages.

Modifications completed in CDAA require a modification package to be assembled and submitted to FPAC Business Center to be recorded in FMMI:

- Prepare a modification package using the “RCPP LMR Payment Submission Checklist,” and the “Accounts Payable Services Branch Submission Checklist”. The modification package must be saved as a single PDF with the naming convention, “[Agreement ID] _Modification Package #.”
- Modification Package should be reviewed for correctness and emailed to Christine.Evans@usda.gov and Scott.Breach@usda.gov with subject line “[Agreement ID]_Modification Package #.”

- The **modification** package will be reviewed, logged, and sent to FPAC Business center via ServiceNow (SNOW) to be processed directly from FMMI. The FPAC Business Center will send a confirmation email after the modification is processed.
- States must add a copy of the email confirmation to the official participant case file and upload a copy to DMS, along with the modification package that was submitted to SNOW.

Note: It is suggested for all payments generated outside of CDAA (using the manual e-from process) the conservation planner follow up with subsequent actions in CD if feasible; by certifying items in CD and making note in the comment boxes to document differences between certified items in CD and actual practice applied amount on the processed CPA-1245. For additional guidance on processing payments after a manual modification work through your APS/RCPP RC or state program coordinator.

Guidance will be forthcoming and followed regarding the reconciliation process for modifications that have been completed outside of CDAA including subsequent payments. This process will be completed for all states by June 15, 2025. State Office and National Office will be completing the reconciliation process.

Regional Conservation Partnership Programs FY25 Deadlines: Table 2

Date	Applicable Deadline	Program
11/22/2024	First Round Batching Cutoff / Application Deadline	RCPP
11/22/2024	ACT NOW Begins	RCPP
1/24/2025	First Round Ranking Deadline	RCPP
2/7/2025	State Office First Round Selection Deadline	RCPP
3/28/2025	First Round Obligation Deadline	RCPP
4/4/2025	Second Round Batching Date / Application Deadline	RCPP
4/25/2025	Second Round Ranking Deadline	RCPP
5/9/2025	State Office Second Round Selection Deadline	RCPP
7/30/2025	ACT NOW ENDS	RCPP
8/1/2025	Second Round Obligation Deadline	RCPP

All Bulk obligation packages are due to Des Moines no later than COB 9/5/2025

Work Breakdown Structure (WBS) is required on the Accounts Payable Services Brach Submission Checklist for all **obligations**, payments, and modifications. Table 1.3 lists applicable WBS codes, project identification number and full project name. Table 3

WBS CODES	Project Number	Project Name
NR.SI.RCP8.19.1894.19XXF	1894	Turkey River Watershed Partnership
NR.SI.RCP8.19.1896.19XXF	1896	Iowa Systems Approach to Conservation Drainage
NR.SI.RCP8.19.1976.19XXF	1976	North Raccoon Partnership for Soil and Water
NR.SI.RCP8.19.2374.20XXF	2374	Cedar River Source Water Partnership
NR.SI.RCP8.19.2266.21XXF	2266	Midwest Ag Water Quality Partnership (Renewal)
NR.SI.RCP8.19.2448.21XXF	2448	SE Iowa Watershed Partnership

NR.SI.RCP8.19.2570.21XXF	2570	Floyd River Water Quality Partnership
NR.SI.RCP8.19.2696.22XXF	2696	Innovative Conservation Agriculture
NR.SI.RCP8.19.2857.22XXF	2857	West Nishnabotna Water Quality and Infrastructure Partnership
NR.SI.RCP8.19.2881.23XXF	2881	Driftless Area Habitat for the Wild & Rare Phase 3
NR.SI.RCP8.19.2963.23XXF	2963	Protect Rathbun Lake
NR.SI.IRAR.19.3367.2331F	3367	Connecting Wildlife Habitat by Integrating Conservation Corridors
NR.SI.IRAR.19.3374.2331F	3374	Improving Grassland Health and Connecting Resilient Land

Contact. If you have questions, please contact Christine Evans, RCPP Program Coordinator, at (515) 323-2608 or christine.evans@usda.gov.

JON HUBBERT
State Conservationist



Attachment (see pages 8 – 30).

Attachment A

Ranking Pool Name	
3367 LM Producer FY25	
Project	
Connecting Wildlife Habitat by integrating Conservation Corridors	
Land Uses	
Crop, Pasture, and Associated Agriculture Land.	
Resource concerns	Eligible Practices
Terrestrial Habitat	327 - Conservation Cover

Terrestrial habitat for wildlife and invertebrates	332 - Contour Buffer Strips
	386 - Field Border
	393 - Filter Strips
	420 - Wildlife Habitat Planting
	422 - Hedgerow Planting
	644 - Wetland Wildlife Habitat Management
	645 - Upland Wildlife Habitat Management
	656 - Constructed Wetland
	657 - Wetland Restoration
	658 - Wetland Creation
	659 - Wetland Enhancement
	All supporting practices are eligible, when linked to a primary practice.

Categories (Geospatially Answered) -	
1. Skunk River Watershed	
2. Wapsipinicon River Watershed	
3. Des River Watershed	
4. Iowa River Watershed	
5. Lower Cedar River Watershed	
6. Grand / Thompson River Watershed	
7. Chariton River Watershed	
8. Coppers-Duck /Flint River Watersheds	
9. Maquoketa River	
10. The Rest of state	
Special Notes:	
3367 IRA Funds all contracts must be completed by 9/30/2031	
3367 project goals and objectives including creating and connecting wildlife habitat, utilizing native vegetation types. This project is not intended to implement conservation cover with non-native cover types.	
Special emphasis on implementation of cover types that benefit pollinator species.	
3367 does not have any applicable ACT NOW categories.	
All counties eligible except Allamakee County. GIS Layer: Iowa - RCPP 3367 Connecting Wildlife Habitat	

*See ranking worksheets for ranking questions

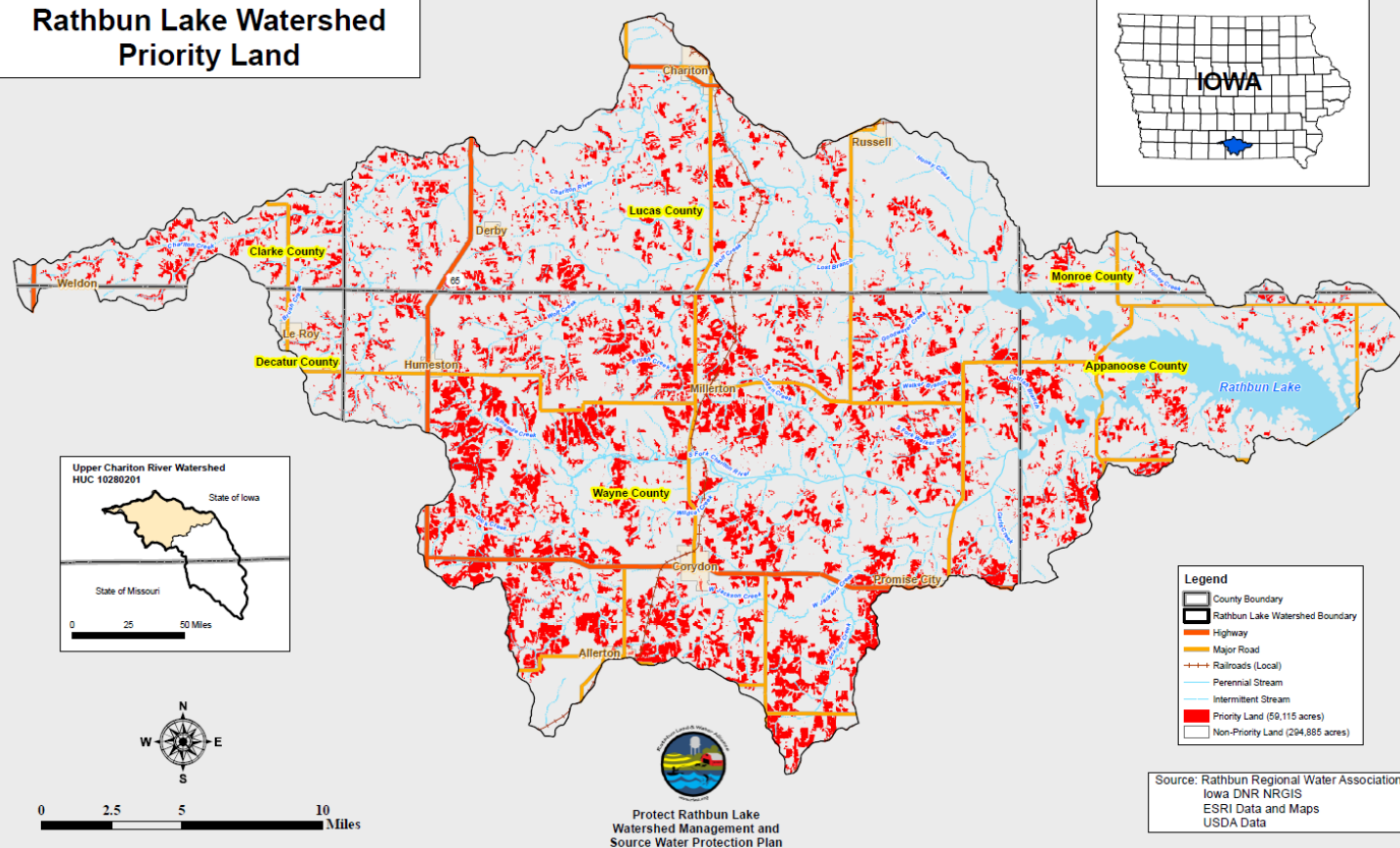
RCPP 3367 - Connecting Wildlife Habitat by Integrating Conservation Corridors



2963 LM Producer FY25	
Project	
Protect Rathbun Lake	
Land Uses	
Crop, Pasture, Associated Ag Land, Forest	
Resource concerns	Eligible Practices
Field sediment, nutrient, and pathogen loss to surface or ground water, which includes:	340 - Cover Crop
Nutrients transported to surface water	350 - Sediment Basin
Sediment transported to surface water	410 - Grade Stabilization Structure
Nutrients transported to groundwater	412 - Grassed Waterway
Long term protection of land (required with rentals).	512 - Pasture and Hayland Planting
	600 - Terrace
	638 - Water Sediment Control Basin (WASCOB)
	RFRN - RENTAL PAYMENT only eligible when converting cropland to pasture (512). Rental payment \$XX ac/yr for 5 years.
	All supporting practices are eligible, when linked to an eligible primary practice.
Categories	
1. Priority Land Applications	Reviewing the treatment area calculated for the practices being implemented, does Priority Land within the Rathbun Lake watershed comprise at least 25% of the treatment area.
2. All other applications	Less than 25% of treatment area is priority land. If the soil loss of the treatment area is greater than 10 T/ac/year OR the area contains classic gully erosion. Contact Velvet.Buckingham@ia.nacdnet.net or Brian.demoss@ia.nacdnet.net for review to determine if "all other applications" is the correct category.
Special Notes:	
Eligible applications must have a minimum of 25% of Priority Land included in the application area / treatment area.	
Applications that do not include minimum of 25% Priority Land can be assessed on a case-by-case basis by contacting Velvet.Buckingham@ia.nacdnet.net or Brian.demoss@ia.nacdnet.net for evaluation. Partner Staff will determine if the PLU meets criteria to be considered Priority Land within the Rathbun Lake Watershed Area utilizing the IDNR Pollutant Reduction Calculator, this will determine if the PLU meets criteria to be considered Priority Land within the Rathbun Watershed Area.	
Rental Payments only eligible when converting cropland to pasture (CPS 512). Rental payment \$XX/ac/yr for 5 years.	
Rental payment will be added to the application when scheduling agreement items (Practice Code: RFRN). Planners need to be sure to include rental payment in cost estimates in CART.	
530.520A RCPP Rental Agreement Worksheet must be completed and signed by conservation planner every year certifying practice completion (prior to payment).	
2693 does not have any applicable ACT NOW categories.	

*See ranking worksheets for ranking questions

Protect Rathbun Lake RCPP Rathbun Lake Watershed Priority Land



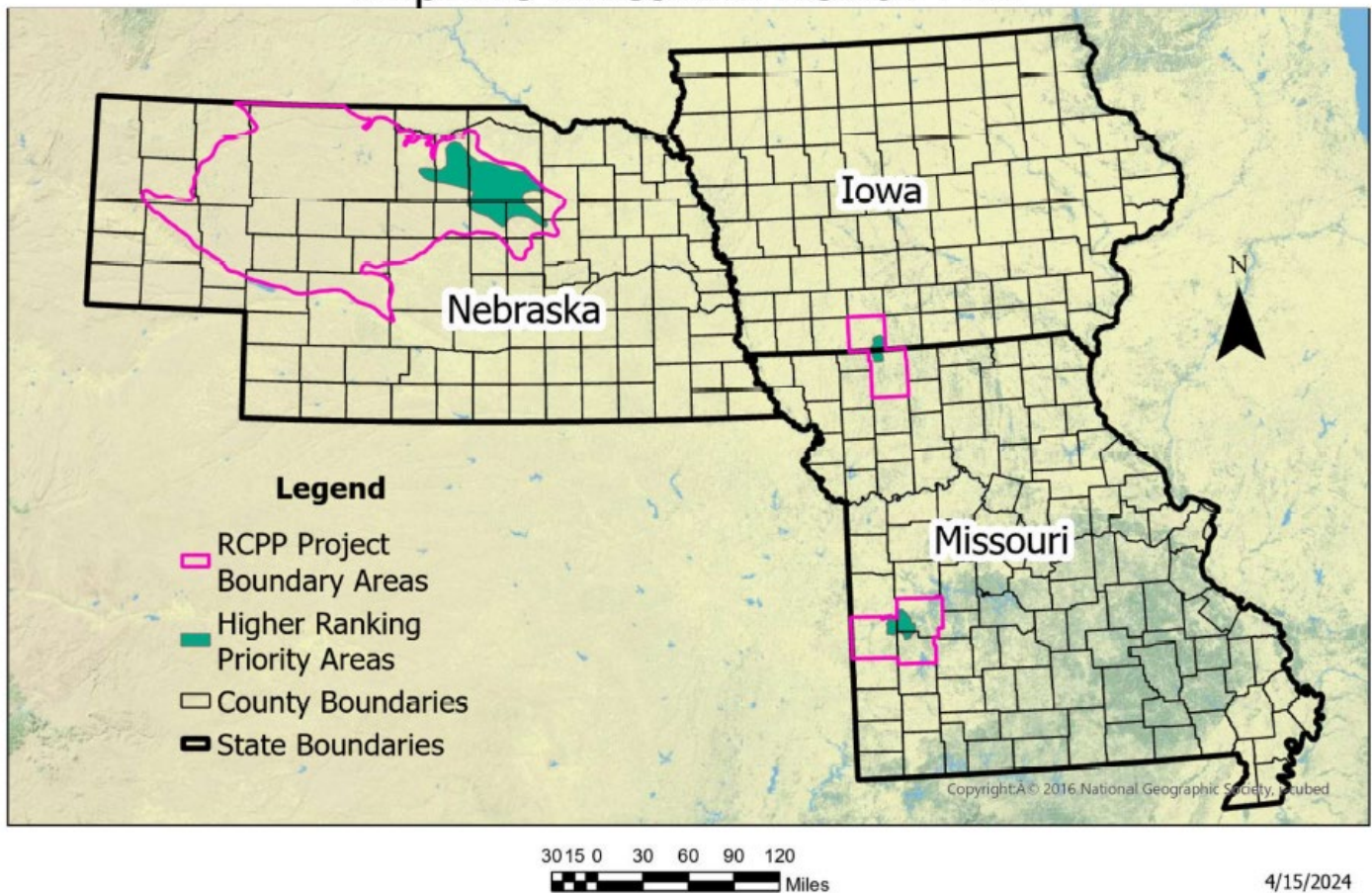
Ranking pool	
3374 LM Producer FY25	
Project	
Improving Grassland Health and Connecting Resilient Land (in 6 Great Plains States)	
Land Uses	
Pasture & Associated Ag Land	
Resource concerns	Eligible Practices
Terrestrial Habitat for Wildlife & Invertebrates	110 - Grazing Management Plan (CPA)- cannot be paired with grazing management practices (CPA can be paired with a DIA and other practices that would not be part of the grazing management plan).
Terrestrial Habitat for Wildlife and Invertebrates	160 - Prescribed Burning (DIA) - can be paired with conservation practices
Degraded Plant Condition	314 - Brush Management
Plant Productivity and Health	315 - Herbaceous Weed Treatment
Plant Structure and Composition	327 - Conservation Cover
	338 - prescribed burning
	512 - Pasture and Hay Planting
	516 - Livestock Pipeline
	528 - Prescribed Grazing
	595 - Pest Management
	614 - Watering Facility
	645 - Upland wildlife habitat management
	649 - Structures for wildlife
	All supporting practices are eligible, when linked to an eligible primary practice
Categories (Geospatially answered)	
1. High Ranking Priority Areas	50% or more of application area within Priority Area
2. All other Applications	49% or less of the application area outside of Priority Area
Special Notes:	
Ranking Pool is limited to Ringgold County total funds for project \$300,000	
3374 does not have any applicable ACT NOW categories.	
3374 has an approved AGI Applicability Waiver. Applicants who do not meet AGI are eligible for project. Notify RCPP State Program Manager that participant needs an AGI override in CDAA, include agreement #, estimated cost. A request will be made to NHQ for AGI Waiver.	

*See ranking worksheets for ranking questions

Funded through IRA – all contracts must be completed by 9/30/2031

RCPP 3374

Improve Grassland Health-TNC



Land Uses: Crop, Pasture, Forest, Associated Ag Land	
Resource concerns	Eligible Practices
Aquatic Habitat	Practice Code: RFRN SEE COST LIST for annual rental payment/ac *Practices Eligible for RFRN (asterisked below) on working lands being converted to habitat.
<i>Aquatic habitat for fish and other organisms</i>	326 - Clearing and Snagging
<i>Elevated water temperature</i>	327 - Conservation Cover *
Concentrated Erosion	342 - Critical Area Planting *
<i>Bank erosion from streams, shorelines or water conveyance channels</i>	381 - Silvopasture *
<i>Classic gully erosion</i>	382 - Fence
<i>Ephemeral gully erosion</i>	386 - Field Border *
Degraded plant condition	390 - Riparian Herbaceous Cover*
<i>Plant productivity and health</i>	391 - Riparian Forested Buffer *
<i>Plant structure and composition</i>	393 - Filter Strip *
Field pesticide loss	395 - Stream Habitat Improvement and Management
<i>Pesticides transported to groundwater</i>	396 - Aquatic Organism Passage
<i>Pesticides transported to surface water</i>	420 - Wildlife Habitat Planting *
Field sediment, nutrient and pathogen loss (listed in PPA)	472 - Access Control
<i>Nutrients transported to groundwater</i>	484 - Mulching
<i>Nutrients transported to surface water</i>	490 - Tree/Shrub Site Preparation
<i>Sediment transported to surface water</i>	500 - Obstruction Removal
<i>Pathogens and Chemicals from manure, bio-solids, or compost applications transported to surface water</i>	512 - Pasture & Hay Planting *
<i>Pathogens and Chemicals from manure, bio-solids, or compost applications transported to ground water</i>	516 - Livestock Pipeline
Livestock production limitation	528 - Prescribed Grazing
<i>Feed and forage balance</i>	533 - Pumping Plant
<i>Inadequate livestock shelter</i>	560 - Access Road
<i>Inadequate livestock water quantity, quality and distribution</i>	575 - Trails & Walkways
Long term protection of land	578 - Stream Crossing
<i>Loss of functions and values/ Threat of conversion</i>	561 - Heavy Use Area Protection
Soil quality limitations	580 - Streambank and Shoreline Protection
<i>Aggregate instability, Compaction, Organic Matter depletion</i>	582 - Open Channel
<i>Soil organism habitat loss or degradation</i>	587 - Structure for Water Control
Terrestrial Habitat: Terrestrial habitat for wildlife and invertebrates	612 - Tree & Shrub Establishment
Weather Resilience	659 - Wetland Enhancement
<i>Drifted Snow; Naturally available moisture use</i>	642 - Water Well
<i>Ponding and flooding; Seasonal high water table, & Seeps</i>	649 - Structures for Wildlife
Wind and water erosion	656 - Constructed Wetland*
<i>Sheet and rill erosion</i>	657 - Wetland Restoration*

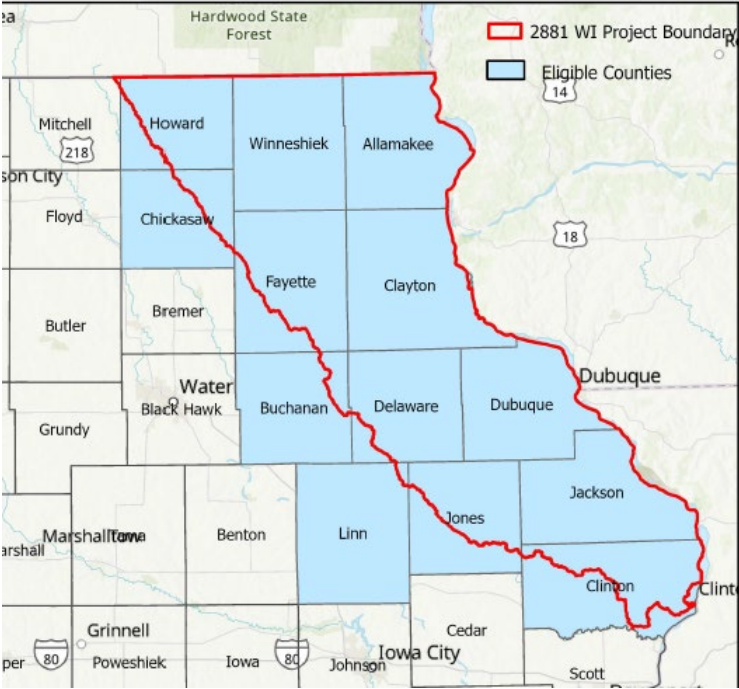
	658 - Wetland Creation*
	659 - Wetland Enhancement*
	All supporting practices are eligible, when linked to a primary practice.

Ranking pool: 2881 LM Producer FY25 continued:

Categories	
1. Application is on Class 2 Stream with 395 &/or 396	Application must include 395 &/or 396, and any other primary and supporting practices are eligible.
2. Application is on Class 1 Stream with 395 &/or 396	Application must include 395 &/or 396 and any other practices and supporting practices are eligible
3. Application includes 395 & /or 396	Application must include 395 &/or 396 and any other practices and supporting practices that are eligible; does not need to be located on a Class 1 or 2 stream;
4. Application is on Class 2 Stream	Application must be located on a class 2 Stream; application can include any primary practices and supporting practices.
5. Application is on Class 1 Stream	Application must be located on a Class 1 Stream; application can include any primary practices and supporting practices.
6. All Other Primary Practices	Application can include any primary practices and supporting practices.
Special Notes:	
Rental Payments are available for cropland being converted to pasture or perennial vegetation.	
Cropland Rental Payment: \$XX/ac for maximum of 3 years.	
Pasture Rental Payment \$XX/ac for maximum of 3 years.	
530.520A RCPP Rental Agreement Worksheet must be completed and signed by conservation planner every year certifying practice completion (prior to payment).	
2881 does not have any applicable ACT NOW categories.	

*See ranking worksheets for ranking questions

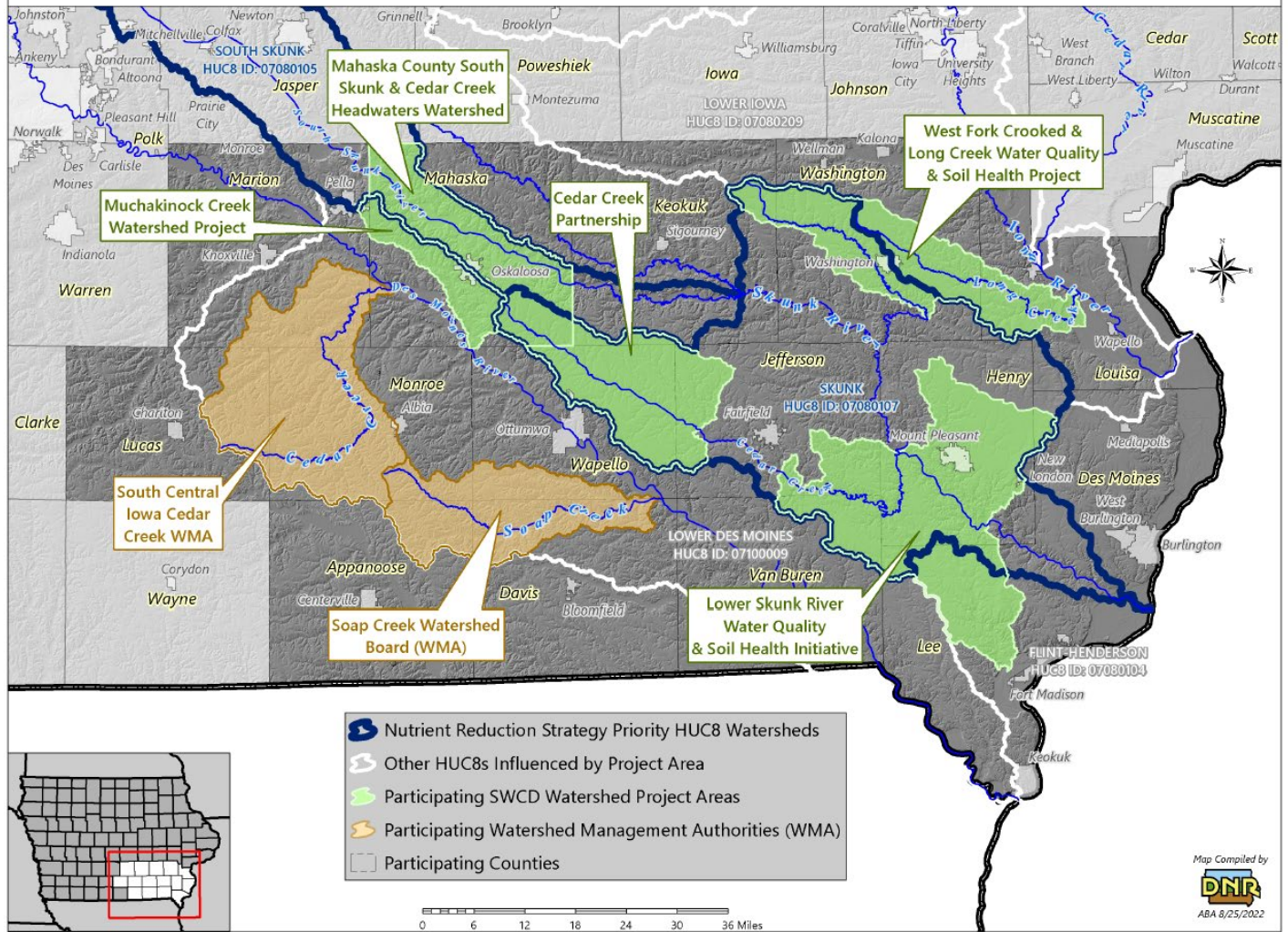
RCPP 2881 - Driftless Area Habitat for the Wild & Rare Phase 3



Project	
2448 SE Iowa Watershed Partnership	
Land Uses	
Cropland, Pasture, Associated Ag Land, Other Rural Land	
Resource concerns	Eligible Practices
Field sediment, nutrient pathogen loss	410 - Grade Stabilization Structure
Nutrients transported to surface water	580 - Streambank and Shoreline Protection
Sediment transported to surface water	600 - Terrace
Nutrients transported to groundwater	604 - Saturated Buffers
Pathogens and chemicals from manure, bio-solids, or compost applications transported to surface water	605 - Denitrifying Bioreactors
Pathogens and chemicals from manure, bio-solids, or compost applications transported to ground water	638 - Water and Sediment Control Basin
	656 - Constructed wetland
	657 - Wetland Restoration
	658 - Wetland Creation
	659 - Wetland Enhancement
	All supporting practices are eligible, when linked to an eligible primary practice.
Categories (Geospatially Answered)	
1. Mahaska / Muchakinock	Mahaska County South Skunk & Cedar Creek Headwaters Watershed (including Muchakinock and Lake Keomah)
2. Cedar Creek	Cedar Creek Partnership
3. West Fork Crooked & Long Creek	West Fork Crooked & Long Creek WQ & Soil Health Project
4. Lower Skunk	Lower Skunk R. WQ & Soil Health Initiative
5. Soap Creek	Soap Creek Watershed
6. South Central Cedar Creek	South Central Iowa Cedar Creek WMA
7. Outside Priority Watershed Boundary	Outside Priority Watershed Boundary (but within the project boundary 50-100%)
8. Otherwise	
Special Notes:	
Lead Partner is anticipating spending approximately \$1.7 million in FY25	
2448 will be implementing ACT NOW in all categories. Ranking Threshold 20.	

*See ranking worksheets for ranking questions

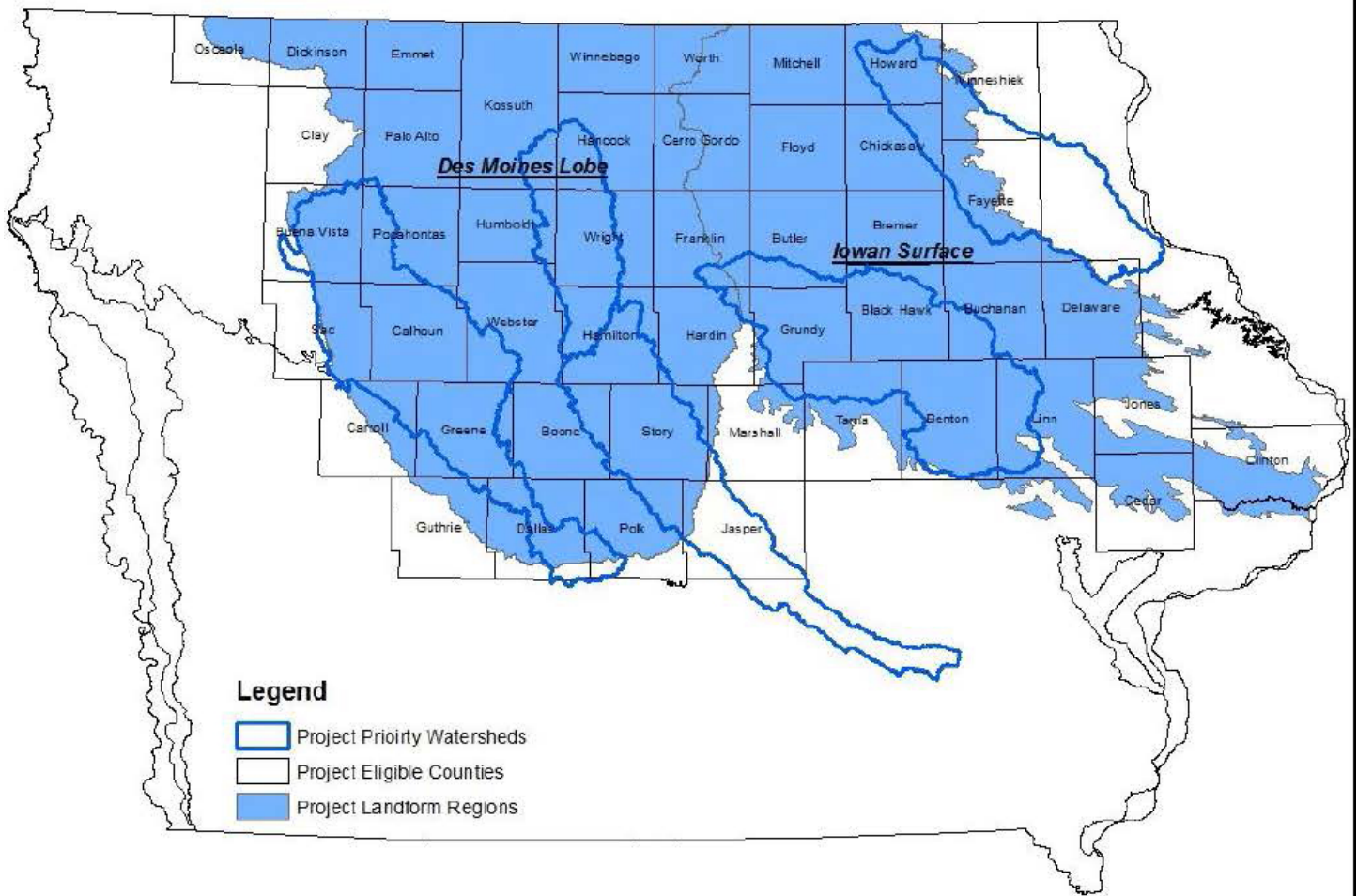
SOUTHEAST IOWA PARTNERS IN CONSERVATION



1896 LM Producer FY25	
Project	
Iowa Systems Approach to Conservation Drainage (ISACD)	
Land Uses	
Cropland, Pasture, Associated Ag Land, Other Rural Land	
Resource concerns	Eligible Practices
Field sediment, nutrient and pathogen loss	327- Conservation Cover
nutrients transported to groundwater	328- Conservation Crop Rotation
nutrients transported to surface water	329- Residue and Tillage Management, No Till
Pathogens and Chemicals from manure, bio-solids, or compost applications transported to surface water	332- Contour Buffer Strips
Pathogens and Chemicals from manure, bio-solids, or compost applications transported to ground water	340- Cover Crop
Sediment transported to surface water	386- Field Borders
Wind & Water Erosion	393- Filter Strip
Sheet & Rill	410- Grade Stabilization Structure
Concentrated Erosion	412- Grassed Waterway
Bank Erosion from streams, shorelines or water conveyance channels	554- Drainage Water Management
Classic Gully & Ephemeral Gully Erosion	590- Nutrient Management
	604- Saturated Buffer
	605- Denitrifying Bioreactor
	656- Constructed Wetland
	657- Wetland Restoration
	659- Wetland Enhancement
All supporting practices are eligible, when linked to an eligible primary practice.	DIA -164 Drainage Water Management Design
Categories	
1. Saturated buffer (ACT NOW)	Practice 604 and can include 605, 656, 657, 659, 554 & DIA164
2. Denitrifying bioreactor (ACT NOW)	Practice 605 and can include 656, 657, 659, 554 & DIA164
3. Constructed wetland (ACT NOW)	Practice 656 and can include 657, 659, 554, DIA 164
4. Wetland (ACT NOW)	Practice 657, 659 and can include 554, DIA 164
5. Drainage Water Management (ACT NOW)	Practice 554 and/or DIA 164
6. Grade Stabilization structure	Practice 410 and can include 604, 605, 656,657, 659, 554 & DIA164
7. Structural Practices	Application includes 410, 412, 604, 605, 656, 657, 659, 554 & DIA 164 and any other primary eligible practices.
8. All Other practices	Application includes: 327, 328, 329, 332, 340, 386, 393, 590
Special Notes:	
Select one category in CART, if an application includes two ACT NOW eligible categories pick the category that appears first in order. If application includes an ACT NOW category/practice and a non- ACT NOW category or practice, select the non-ACT NOW category that appears first in order as appropriate.	
FY25 ACT NOW Allocation \$500,000 threshold for ACT NOW is 10.	

*See ranking worksheets for ranking questions

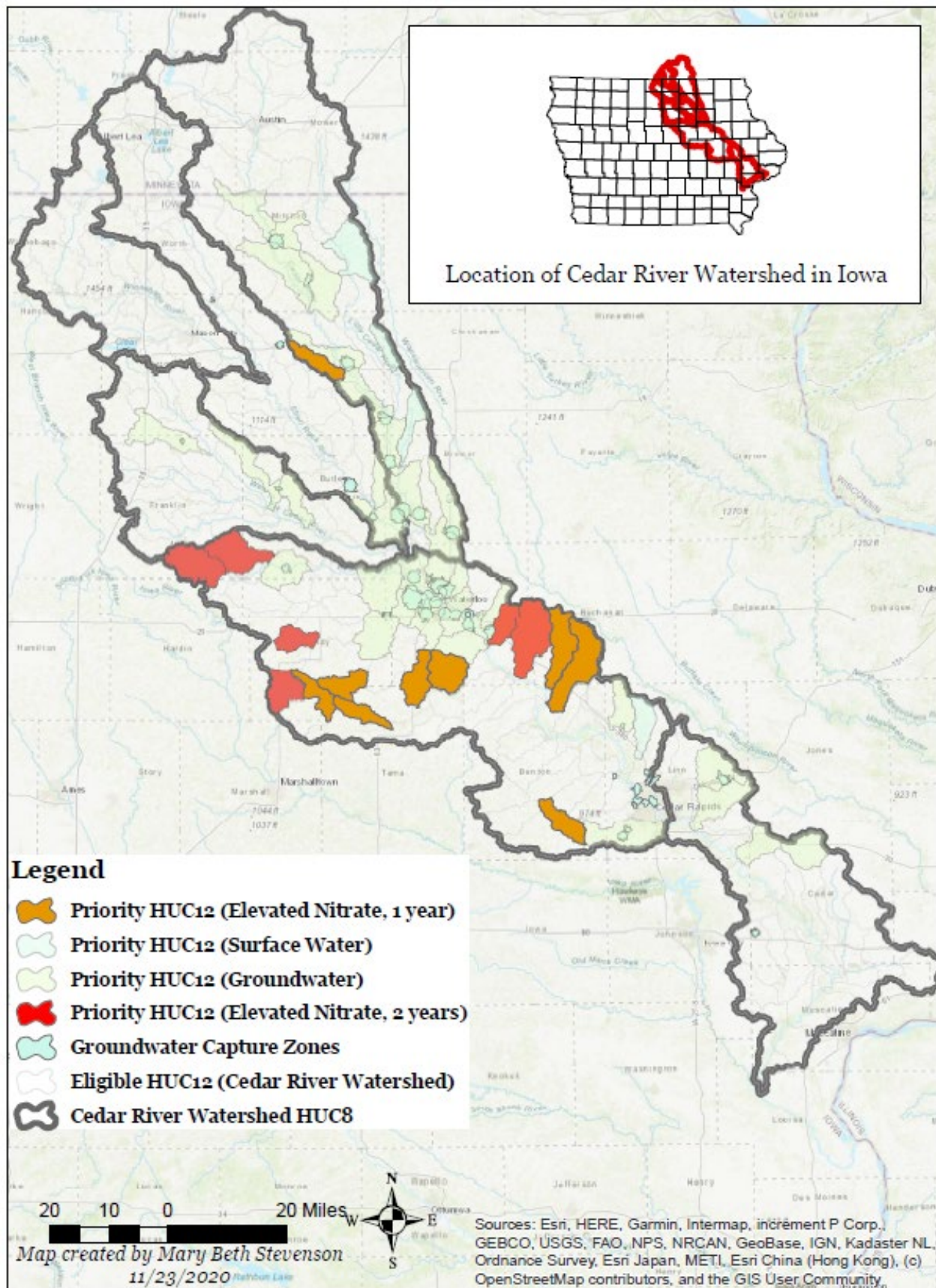
Iowa Systems Approach to Conservation Drainage - RCPP Project Map



2374 LM Producer FY25	
Project	
Cedar River Source Water Partnership	
Land Uses	
Cropland, Pasture, Associated Ag Land, Other Rural Land	
Resource concerns	Eligible Practices
Aquatic Habitat	329- Residue and Tillage Management, No Till
Aquatic Habitat for fish and other organisms	340- Cover Crop
Elevated Water Temperature	604- Saturated Buffer
Field sediment, nutrient and pathogen loss	605- Denitrifying Bioreactor
Nutrients transported to groundwater	656- Constructed Wetland (nitrate removal wetland)
Nutrients transported to surface water	657- Wetland Restoration
Pathogens and Chemicals from manure, bio-solids, or compost applications transported to surface water	658- Wetland Creation
Pathogens and Chemicals from manure, bio-solids, or compost applications transported to ground water	659- Wetland Enhancement
sediment transported to surface water	327, 332, 386, 393- Prairie Strips
Terrestrial Habitat for Wildlife & Invertebrates	645-7 Prairie Strips (3 years maximum).
Weather Resilience	All supporting practices are eligible, when linked to an eligible primary practice.
Drifted Snow	
Naturally Available Moisture Use	
Ponding & Flooding	
Seasonal High Water Table	
Seeps	
Categories	
1. Wetland practices (ACT NOW)	656, 657, 658, 659 planned and can implemented with Prairie Strips and any supporting practices. Cannot include any other practices that are not supported by ACT NOW.
2. Prairie Strips (ACT NOW)	Prairie Strips (327, 332, 386, 393) does NOT include any other primary eligible practices.
3. Edge of Field Practices	604 &/or 605 planned and can include all other eligible primary practices and supporting practices as applicable.
4. Wetland/Prairie Strips	Wetland practices or Prairie Strips, and all other practices and applicable supporting practices. Example: If application includes ACT NOW category practices and non-ACT NOW category practices use this category.
5. Other Primary Practices	Use this category for applications that do not include any ACT NOW category practices or edge of Field Practices (all other applications fall under this category).
Special Notes:	
<p>New in FY25 two categories will utilize ACT NOW. Allocation amount for ACT NOW is \$600,000. ACT NOW ranking threshold is 10.</p> <p>Select one category in CART, if an application includes two ACT NOW eligible categories pick the category that appears first in order. If application includes an ACT NOW category/practice and a non- ACT NOW category practice select the category that comes first in order as applicable (category 3, 4 or 5). Non- ACT NOW Categories /practices are not eligible to be included in ACT NOW categories.</p>	

*See ranking worksheets for ranking questions

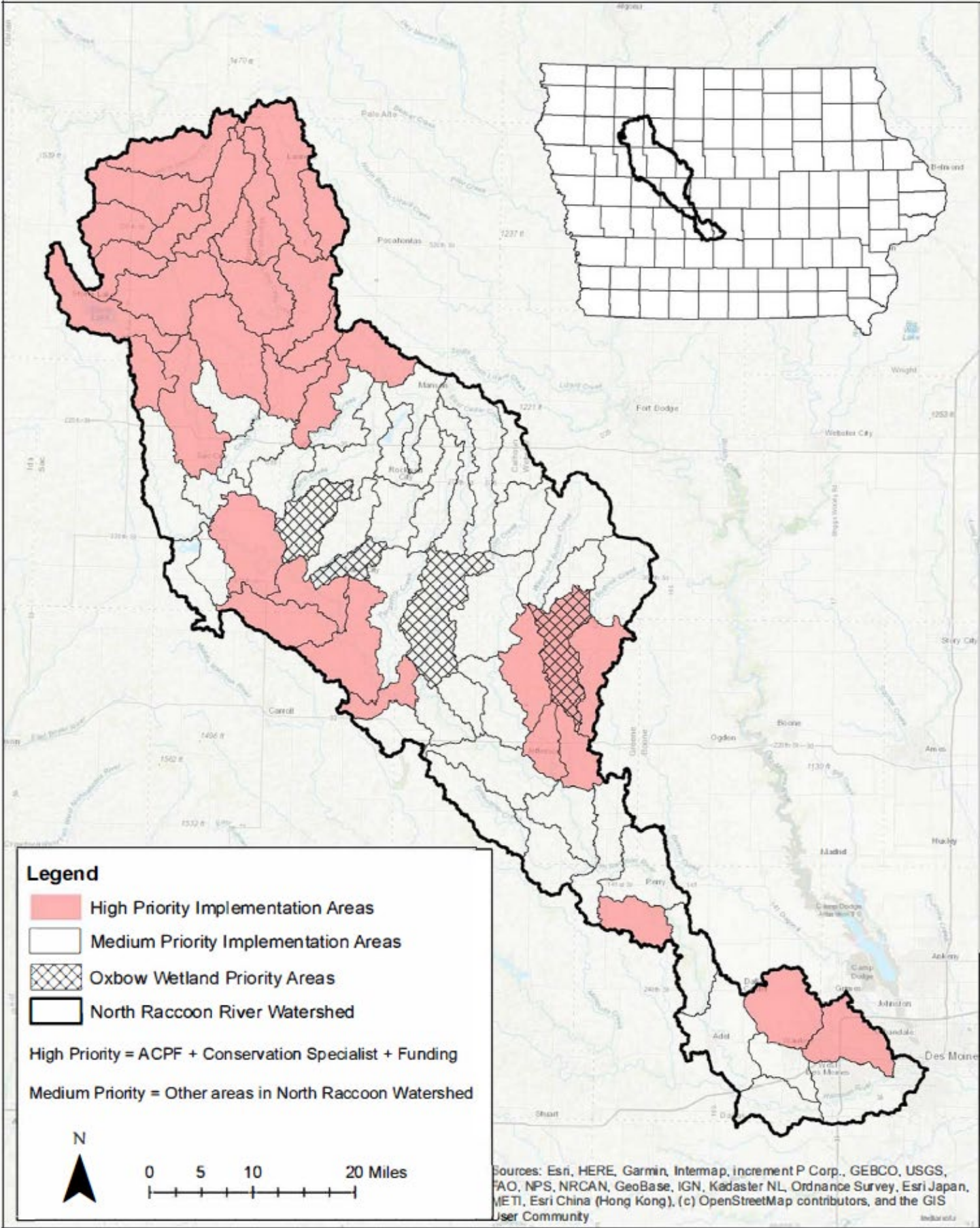
Attachment A: Cedar River Source Water Partnership: Priority & Eligible Areas



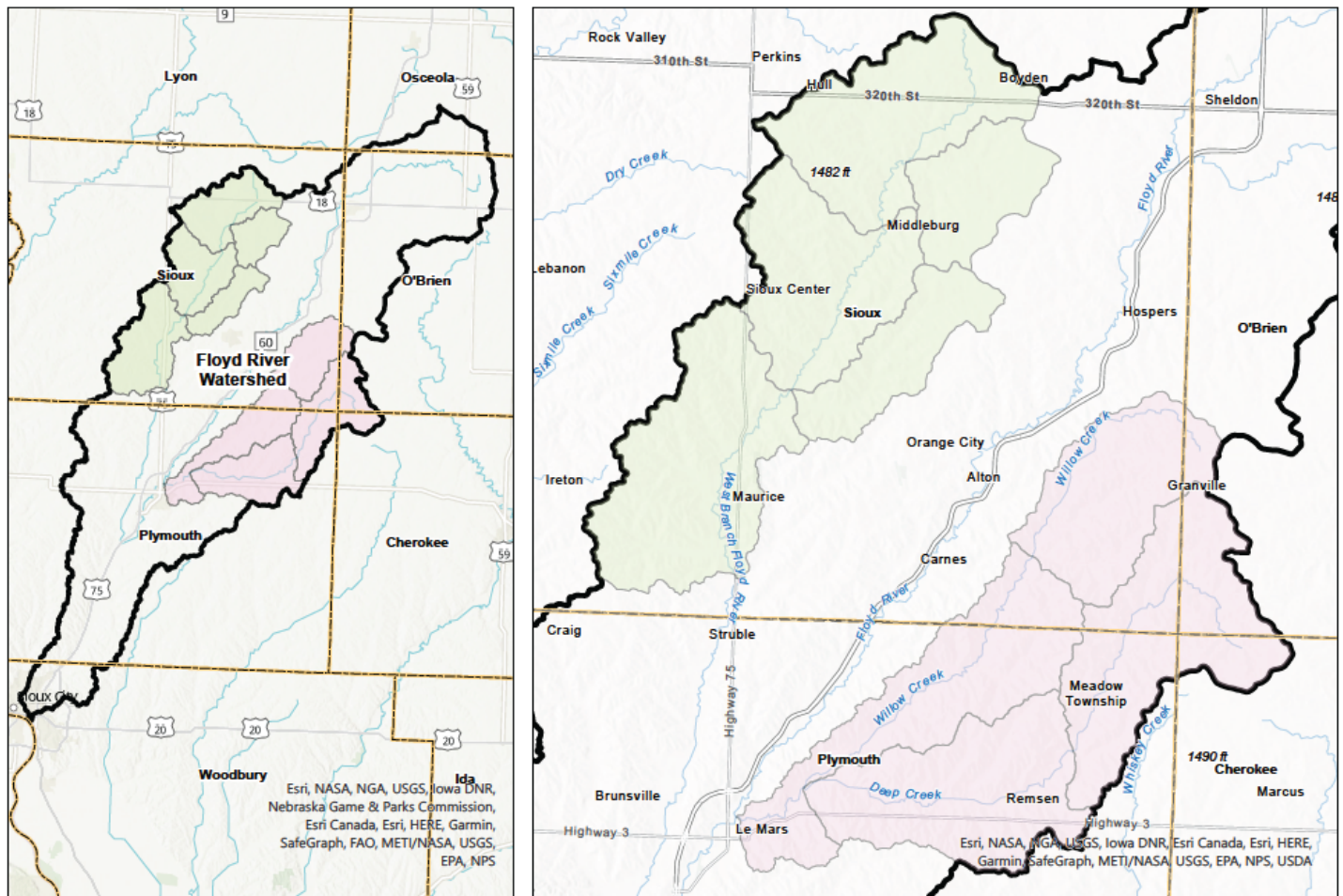
Ranking pool	
1976 LM Producer FY25	
Project	
North Raccoon Soil & Water Outcome	
Land Uses	
Cropland, Pasture, Associated Ag Land	
Resource concerns	Eligible Practices
Field sediment, nutrient and pathogen loss	329- Residue and Tillage Management, No Till
Nutrients transported to groundwater	345 - Residue and Tillage Management, Reduced Till
Nutrients transported to surface water	340- Cover Crop
Pathogens and Chemicals from manure, bio-solids, or compost applications transported to surface water	604- Saturated Buffer
Pathogens and Chemicals from manure, bio-solids, or compost applications transported to ground water	605- Denitrifying Bioreactor
sediment transported to surface water	656- Constructed Wetland
Wind and Water Erosion	657- Wetland Restoration
Sheet and Rill Erosion	658- Wetland Creation
	659- Wetland Enhancement
	All supporting practices are eligible.
Categories	
1. Saturated buffer (ACT NOW)	604 planned can include additional eligible primary practices and supporting practices.
2. Denitrifying bioreactor (ACT NOW)	605 planned can include addition eligible primary practices and supporting practices.
3. Wetland - riverine oxbow restoration (ACT NOW)	657, 658, 659 planned can included other eligible primary practices and supporting practices.
4. Constructed Wetland (ACT NOW)	656 planned, can include additional eligible primary practices and supporting practices.
5. All Other Primary Practices (ACT NOW)	Practice 329, 345, 340, 658, 658 planned and supporting practice.
Special Notes:	
All categories are ACT NOW – ranking threshold is 10. Category 5. All Other Primary Practices (ACT NOW) – will NOT have any ACT NOW Selections in FY25.	
Allocation for FY25 is \$1,900,000	

*See ranking worksheets for ranking questions

Attachment A: North Raccoon Soil & Water Outcomes RCPP Project Area



Ranking pool	
2570 LM Producer FY25	
Project	
Floyd River Water Quality Partnership	
Land Uses	
Cropland, Pasture, Associated Ag Land, Other Rural Land	
Resource concerns	Eligible Practices
Field sediment, nutrient and pathogen loss	313- Waste Storage Facility
Nutrients transported to groundwater	327- Conservation Cover
Nutrients transported to surface water	328- Conservation Crop Rotation
Pathogens and Chemicals from manure, bio-solids, or compost applications transported to surface water	329- Residue and Tillage Management, No Till
Pathogens and Chemicals from manure, bio-solids, or compost applications transported to ground water	340- Cover Crop
sediment transported to surface water	410- Grade Stabilization Structure
Terrestrial Habitat	412- grassed waterway
Terrestrial Habitat for Wildlife & Invertebrates	512- Pasture and Hay Planting
Wind and water erosion	554- Drainage Water Management
<i>Sheet and rill erosion</i>	590- Nutrient Management
	600 - Terrace
	604- Saturated Buffer
	605- Denitrifying Bioreactor
	638- Water and Sediment Control Basin
	656- Constructed Wetland
	657- Wetland Restoration
	659- Wetland Enhancement
	All supporting practices are eligible, when linked to an eligible primary practice
Categories	
1. Conservation Drainage	Any application with 554, 604, 605, 656 planned; can include additional eligible primary practices
2. Wetland Restoration	657, 659 planned can include addition eligible primary practices
3. Structural Practices	410, 412, 638, 600 planned can included other eligible primary practices; 313 is not eligible in this category.
4. Vegetative Practices	327, 512 planned can include additional eligible primary practices
5. Other Primary Practices	313, 328, 329, 340, 590
Special Notes:	
FY25 allocation \$400,000	
2570 does not have any applicable ACT NOW categories.	



Floyd River Water Quality Partnership

- Iowa - County Boundaries
- West Branch of the Floyd River Watershed Project
- Floyd River Watershed
- Deep Creek-Willow Creek Watershed Project

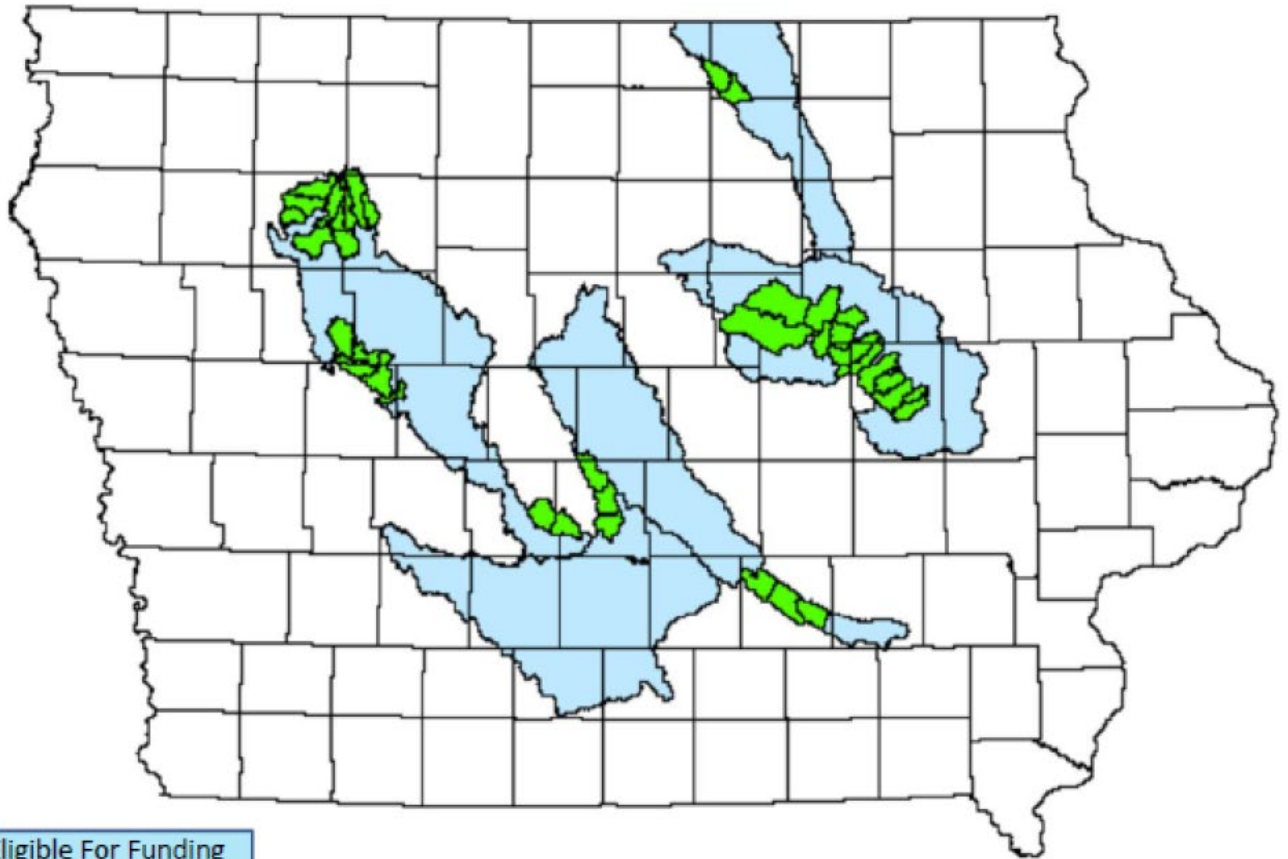


USDA United States Department of Agriculture
 Natural Resources Conservation Service
 GIS Office Des Moines, Iowa
 3/22/2022

Ranking pool	
2266 LM Producer FY25	
Project	
Midwest Agriculture Water Quality Partnership	
Land Uses	
Cropland, Pasture, Associated Ag Land	
Resource concerns	Eligible Practices
Field sediment, nutrient and pathogen loss	327- Conservation Cover (645 can be implemented as a supporting practice up to 5 years, if 327 is implemented as prairie strips)
Nutrients transported to groundwater	328- Conservation Crop Rotation
Nutrients transported to surface water	329- Residue and Tillage Management, No Till
Pathogens and Chemicals from manure, bio-solids, or compost applications transported to surface water	340- Cover Crop
Pathogens and Chemicals from manure, bio-solids, or compost applications transported to ground water	410- Grade Stabilization Structure
sediment transported to surface water	554- Drainage Water Management
Wind & Water Erosion,	590- Nutrient Management
Sheet and rill erosion	604- Saturated Buffer
Concentrated Erosion	605- Denitrifying Bioreactor
Bank Erosion from streams, shorelines or water conveyance channels	656- Constructed Wetland
Classic Gully	657- Wetland Restoration
	659- Wetland Enhancement
	DIA - 164 Drainage Water Management Design
	All supporting practices are eligible, when linked to a primary practice
Categories	
1. Saturated Buffer (ACT NOW)	Practice 604 and can include 605, 410, 656, 657, 659 & 554, DIA 164
2. Denitrifying Bioreactor (ACT NOW)	Practice 605 and can include 410, 656, 657, 659 & 554, DIA 164
3. Grade Stabilization Structure (ACT NOW)	Practice 410 and can include 656, 657, 659 & 554, DIA 164
4. Wetland (ACT NOW)	Practice 656, 657, 659 and can include 554, & DIA 164
5. Drainage Water Management (ACT NOW)	DIA 164 and /or 554
6. Structural Practices / all other practices	Practices 604, 605, 410, 656, 657, 659, 554, DIA 164 and any other primary eligible practices.
7. All Other Practices (no structural practices)	Practices 327, 328, 329, 340, & 590
Special Notes:	
Only Select one category in CART; if you have two ACT NOW eligible categories in your application pick the category that appears first in order.	
Non - ACT NOW Categories /practices are not eligible to be included in ACT NOW categories.	
In instances when you have an application for an ACT NOT category /practice and 327, 328, 329, 340, 554, DIA164, or 590 select Category 6. Structural Practices.	
If you have an application with one or more of these practices 327, 328, 329, 340, or 590 select Category 7. All Other Practices.	
FY25 ACT NOW Allocation \$750,000 – ranking threshold is 10.	

*See ranking worksheets for ranking questions

Midwest Agriculture Water Quality Partnership Renewal Project Area



HUC-8s Eligible For Funding

Priority Watershed Projects

Ranking pool	
2857 LM Producer FY25	
Project	
West Nishnabotna Water Quality & Infrastructure Partnership	
Land Uses	
Cropland, Pasture, Forest, and Associated Ag Land.	
Resource concerns	Eligible Practices
Field sediment, nutrient and pathogen loss	386 - Field Border
Nutrients transported to groundwater	391 - Riparian Forest Buffer
Nutrients transported to surface water	393 - Filter Strip
Pathogens and Chemicals from manure, bio-solids, or compost applications transported to surface water	410 - Grade Stabilization
Pathogens and Chemicals from manure, bio-solids, or compost applications transported to ground water	412- Grassed Waterway
sediment transported to surface water	490 - Tree/Shrub Preparation
Weather Resilience	512 - Pasture & Hayland Planting
<i>Drifted Snow</i>	528 - Prescribed Grazing
Naturally available moisture use	575 - Trails and Walkways *
<i>Ponding and flooding</i>	580 - Streambank & Shoreline Protection
<i>Seasonal high-water table</i>	600 - Terrace
Seeps	604 - Saturated Buffer
	605 - Denitrifying Bioreactor
	612 - Tree/Shrub Establishment
	614 - Watering Facility *
	638 - Water Sediment Control Basin
	All supporting practices are eligible, when linked to an eligible primary practice
Categories	
1. Edge of Field Practices	Practice 604, or 605 and can include any other eligible primary practice EXCEPT Cover crops 340. Cover crops are not eligible in this category.
2. Streambank & Shoreline Protection (requires filter strip 393)	Practice 580 planned and can include any other eligible primary practice EXCEPT Cover crops 340. Cover crops are not eligible in this category.
3. Grade Stabilization Structure	Practice 410 planned and can include any other eligible primary practice EXCEPT Cover crops 340. Cover crops are not eligible in this category.
4. Structural Practices	Practice 604, 605, 580, 410, 412, 600, 638 and can include any additional eligible primary practices.
5. All Other Primary Practices (excludes 340)	Practice 327, 329, can include any other additional eligible practices EXCEPT Cover crops 340. Cover crops are not eligible in this category.
6. All Other (including 340)	all primary eligible practices can be included in this category.
Special Notes:	
2857 does not have any applicable ACT NOW categories.	

*See ranking worksheets for ranking questions

RCPP 2857 - W. Nishnabotna WQ & Infrastructure Partnership

