

[illegible]

# Closing Comments

## Final Thoughts

- Planning phase of a bigger project.
- Schedules and timelines are targets, not rigid.
- The participation of public and agencies is voluntary **BUT CRITICAL TO A SUCCESSFUL PROJECT.**
- The project is intended to reflect the values and opinions of the local agencies and community whenever possible.
- Project webpage: <https://www.nrcs.usda.gov/programs-initiatives/watershed-and-flood-prevention-operations-wfpo-program/new-mexico/watershed>



Contact Merceidez Fabok with the NRCS:



- **Email:** [merceidez.fabok@usda.gov](mailto:merceidez.fabok@usda.gov)
- **Mail:** USDA NRCS New Mexico, Att: Merceidez Fabok  
100 Sun Ave. Northeast, Suite 602, Albuquerque, NM 87109-3434

Comments/Questions are due to NRCS by: **Saturday February 22, 2025**



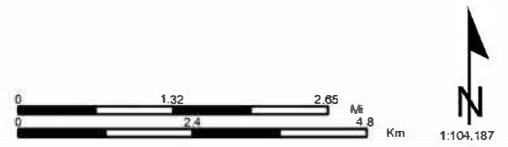


**Tortugas Plan-EA  
Watershed and Project Area Map**

-  Project Site
-  Tortugas Subwatershed Boundary



Project Location: 106.670567°W 32.305589°N





**Resource Concerns – Scoping Meeting**  
**Supplemental Watershed Plan-Environmental Assessment for**  
**Tortugas Site 1 Dam (OSE D-270)**  
**January 23, 2025**

Name (Optional): \_\_\_\_\_

ITEM/ CONCERN	How Important is this Resource in relation to the Project?			Why?
	Not	Little	Very	
<i>Soil-Related Concerns</i>				
Soil Resources				
Prime and Unique Farmland				
<i>Water-Related Concerns</i>				
Water Resources				
Sole Source Aquifers				
Water Quality				
Floodplain Management				

**Resource Concerns – Scoping Meeting**  
**Supplemental Watershed Plan-Environmental Assessment for**  
**Tortugas Site 1 Dam (OSE D-270)**  
**January 23, 2025**

ITEM/ CONCERN	How Important is this Resource in relation to the Project?			Why?
	Not	Little	Very	
Waters of the US				
Regional Water Resource Plans				
Wild and Scenic Rivers				
<i>Air-Related Concerns</i>				
Air Quality				
<i>Plant and Animal-Related Concerns</i>				
Threatened and Endangered Species				
Migratory Birds				
Bald and Golden Eagles				

**Resource Concerns – Scoping Meeting**  
**Supplemental Watershed Plan-Environmental Assessment for**  
**Tortugas Site 1 Dam (OSE D-270)**  
**January 23, 2025**

ITEM/ CONCERN	How Important is this Resource in relation to the Project?			Why?
	Not	Little	Very	
Essential Fish Habitat				
Critical Habitat				
Ecologically Critical Areas				
Invasive Species				
Fish and Wildlife				
Natural Areas				
Riparian Areas				
Forest Resources				

**Resource Concerns – Scoping Meeting**  
**Supplemental Watershed Plan-Environmental Assessment for**  
**Tortugas Site 1 Dam (OSE D-270)**  
**January 23, 2025**

ITEM/ CONCERN	How Important is this Resource in relation to the Project?			Why?
	Not	Little	Very	
Wetlands				
<i>Human Use-Related Concerns</i>				
Cultural Resources/ Historic Properties/ Tribal Consultation				
Environmental Justice and Civil Rights				
Social Issues				
Local, Regional, National Economy				
Public Health and Safety				
Scenic Beauty				

**Resource Concerns – Scoping Meeting**  
**Supplemental Watershed Plan-Environmental Assessment for**  
**Tortugas Site 1 Dam (OSE D-270)**  
**January 23, 2025**

ITEM/ CONCERN	How Important is this Resource in relation to the Project?			Why?
	Not	Little	Very	
Parklands				
Scientific Resources				
Land Use				
Recreation				
<i>Ecosystem Services Concerns</i>				
Provisioning				
Regulating				
Supporting				



**Resource Concerns – Scoping Meeting**  
**Supplemental Watershed Plan-Environmental Assessment for**  
**Tortugas Site 1 Dam (OSE D-270)**  
**January 23, 2025**

ITEM/ CONCERN	How Important is this Resource in relation to the Project?			Why?
	Not	Little	Very	
Cultural				
<i>Other Concerns?</i>				
Other?				

**Resource Concerns – Scoping Meeting**  
**Supplemental Watershed Plan-Environmental Assessment for**  
**Tortugas Site 1 Dam (OSE D-270)**  
**January 23, 2025**

ITEM/ CONCERN	How Important is this Resource in relation to the Project?			Why?
	Not	Little	Very	