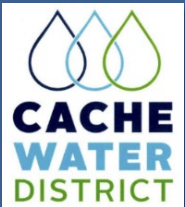




Logan River Watershed Plan

Open House

November 18, 2024



CROCKETT
AVENUE IRRIGATION
& DISTRIBUTION, INC



NEEDS & CHALLENGES

Logan River Watershed Plan

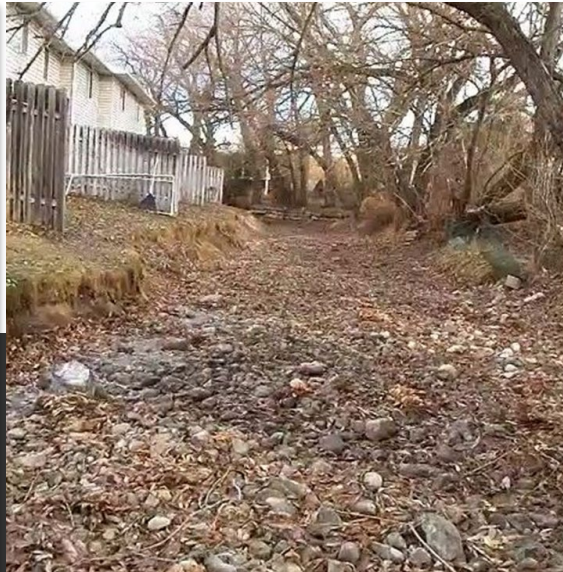


PROTECTION OF WATER RIGHTS

Source: Peter Essick/Aurora



LIMITED RESOURCES



DETERIORATING INFRASTRUCTURE



CULINARY UPGRADES

Source: www.canyonhydro.com

We Are Here

Logan River Watershed Plan



Environmental Impact Statement (EIS) Major Milestones

NEPA PROCESS

Initiate EIS

- Publish notice of intent
- Cooperating & Participating Agency Letters
- Conduct agency & public scoping
- Gather preliminary public comments – Ends April 10th.

Purpose & Need

- Develop purpose & need
- Identify project goals & funding requirements

Preliminary Alt. Development

- Develop alternatives
- Establish project footprint

Data Collection

- Analyze existing conditions
- Identify needed resource surveys
- Conduct fieldwork
- Agency consultation & coordination

Analyze Alternatives

- Analyze alternatives
- Evaluate potential impacts to environmental resources

Prepare Draft EIS

- Draft EIS reviewed UT NRCS
- Draft EIS revised
- Draft EIS reviewed by National Water Management Center
- Draft EIS released to public
- 30-day public comment period
- Public Hearing to review Draft EIS

Prepare Final EIS

- Incorporate public, Tribal, and agency comments from Draft EIS
- Finalize analysis and design features and mitigation
- Complete Agency coordination and consultation

Decision Document

- Record of Decision documents final alternatives, design features, and mitigation
- Ready for implementation

ALTERNATIVE DEVELOPMENT

Recreation

- Additional trails from Crockett Avenue and from Sumac Drive to River Hollow Park

Flood Control

- Moved overflow from 1400 North to 1800 North to improve flood protection
- Added improvements to canals for maintenance and conveyance of flood water

Agricultural Water Delivery

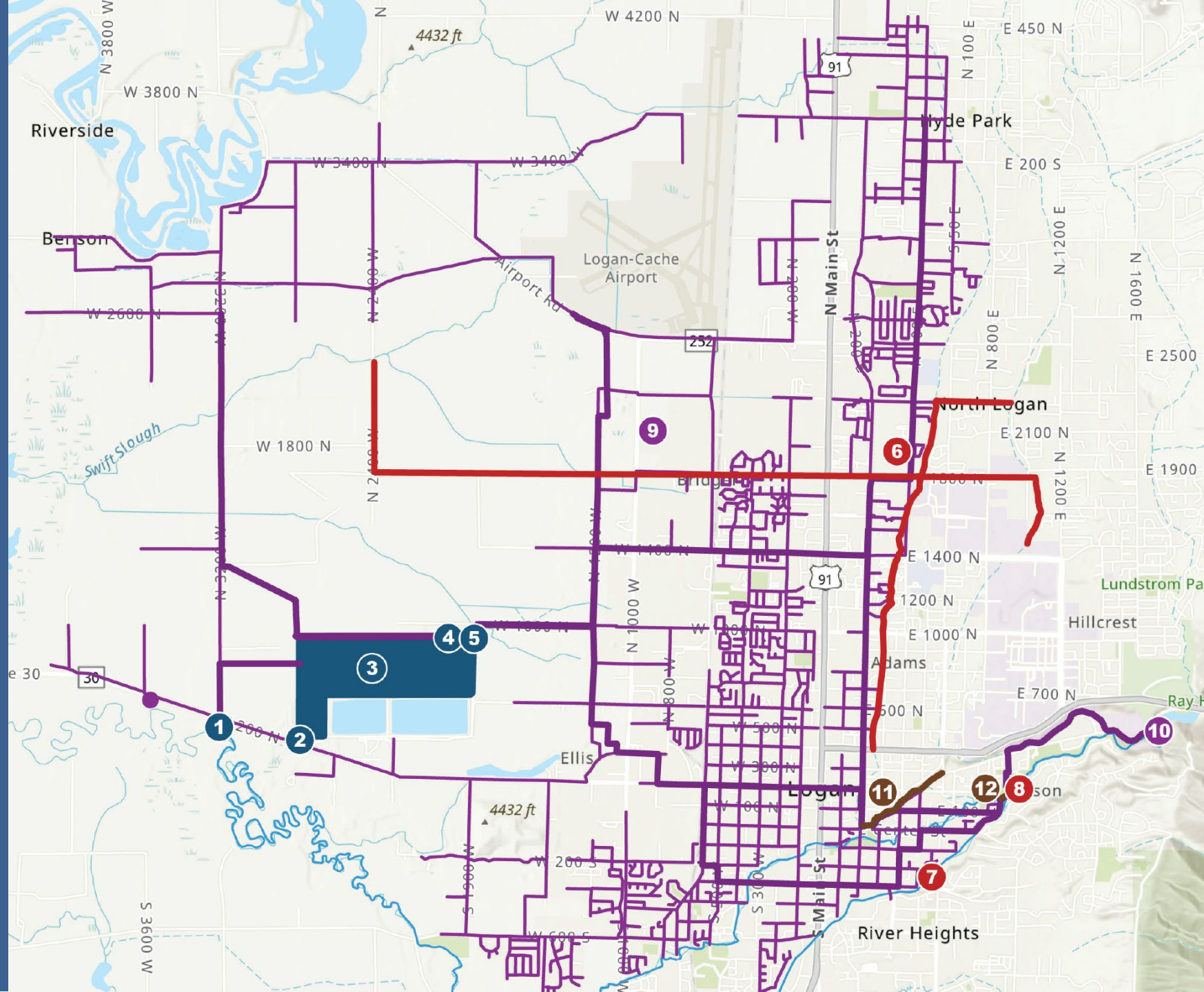
- Maintained connectivity between the Logan River and the Little Logan
- Allowed for flows through the entire Little Logan reach

ALTERNATIVES

Future Without Federal Investment (FWOFI)	First Dam Alternative (FDA)	Crockett Diversion Alternative (CDA)
Reconstruct Crockett Diversion dam	Move CAIC diversion from Crockett Diversion to First Dam Reconstruct Crockett Diversion dam	Reconstruct Crockett Diversion dam
Enclose Canal (200 E to 500 E) along Canyon Road	Pressurized Irrigation System	Pressurized Irrigation System
Future enclosure of all main canals except the Little Logan	West River Pump Station	West River Pump Station
	West Lagoon Pump and Hydropower Station	West Lagoon Pump Station
	Water Storage Facility	Water Storage Facility

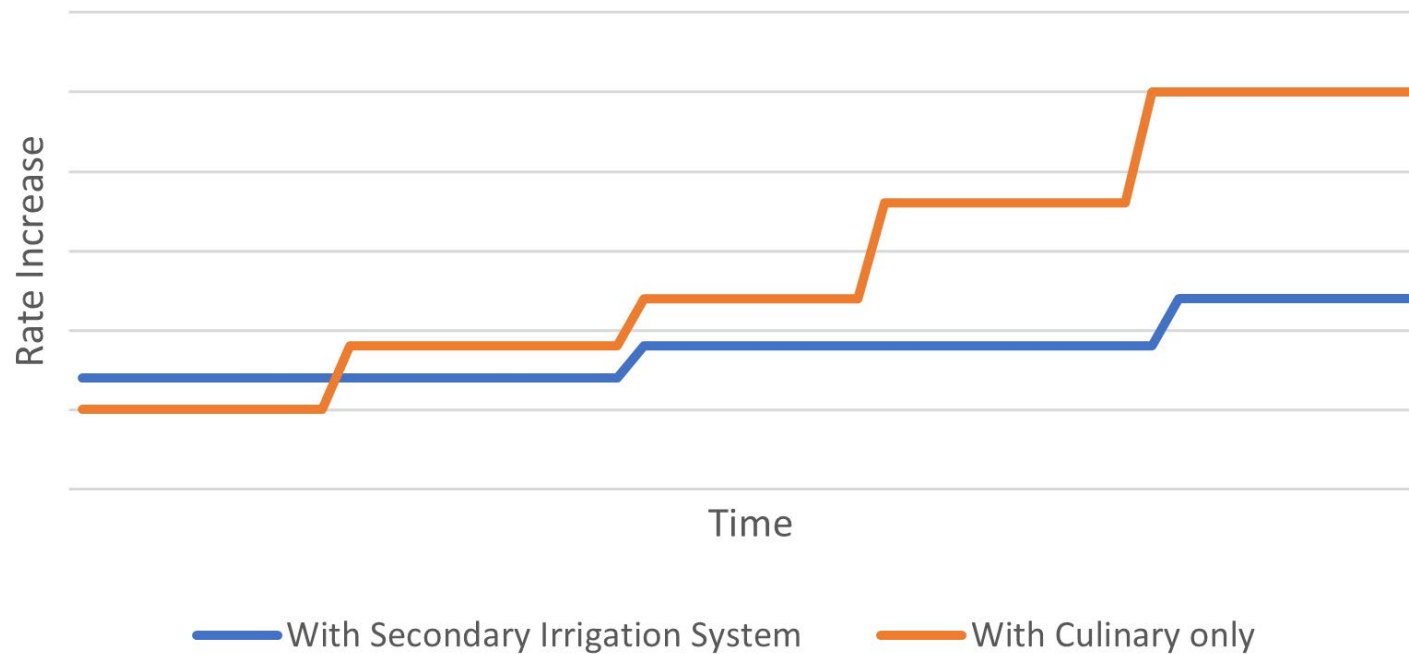
PREFERRED ALTERNATIVE

1. West River Pump Station
2. Cow Pasture Pump Station
3. Storage
4. West Lagoons Pump Station
5. Hydropower Station
6. Stormwater System
7. Removal of Providence Pioneer Diversion Dam
8. Reconstruction of Crockett Diversion Dam
9. Pressure Irrigation System
10. First Dam Intake
11. New Canyon Road Trail
12. New River Hollow Park Trail



REDUCES FUTURE CULINARY WATER INFRASTRUCTURE NEEDS

Concept Residential Total Water Rate
Comparison



ESTIMATED RATES

Estimated Secondary User Rates with NRCS Funding			
Connection Rate	50%	75%	100%
Estimated Secondary Rate* (monthly for 12 months)	\$60-70	\$40-45	\$30-35

LOGAN RIVER FLOWS

Logan River Conservation Action Plan Summer Base Flow Evaluation Criteria

Poor	Fair	Good	Very Good
< 10 cfs	10-30 cfs	31-60 cfs	>60 cfs

Adds 25 CFS to 14 miles of the Logan River

LOGAN RIVER FLOWS NEAR LOGAN RIVER GOLF COURSE



6-29-2021, 5 to 15 CFS currently experienced during a significant portion of the irrigation season



5-6-2021, 30 to 50 CFS as would be experienced with Logan River Instream flows added from the First Dam Alternative

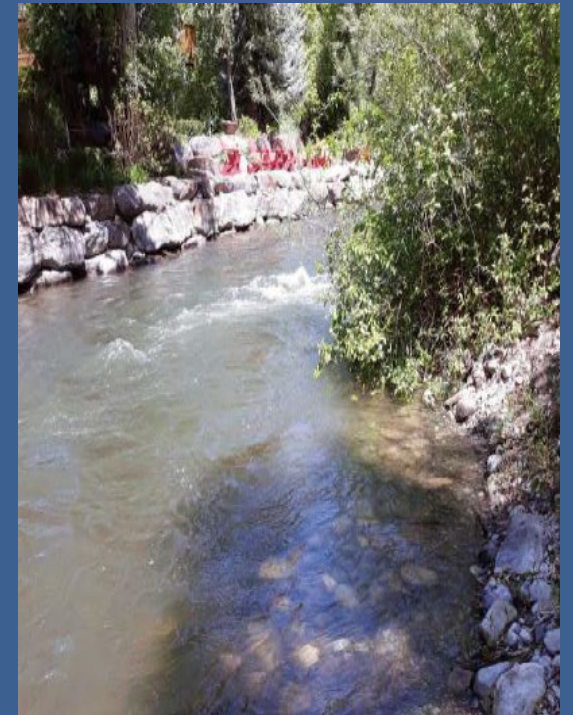
LOGAN RIVER FLOWS ABOVE CROCKETT DIVERSION



6-29-2021, 60 to 80 CFS



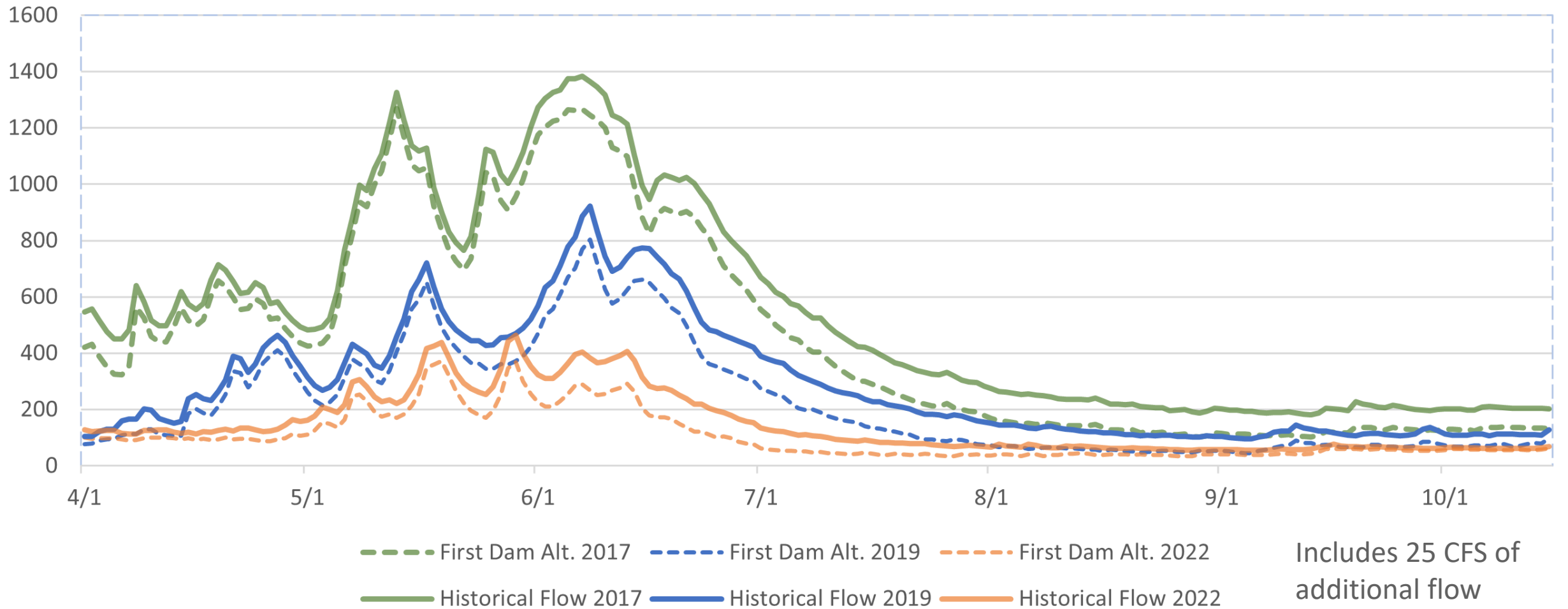
5-6-2021, 100 to 120 CFS



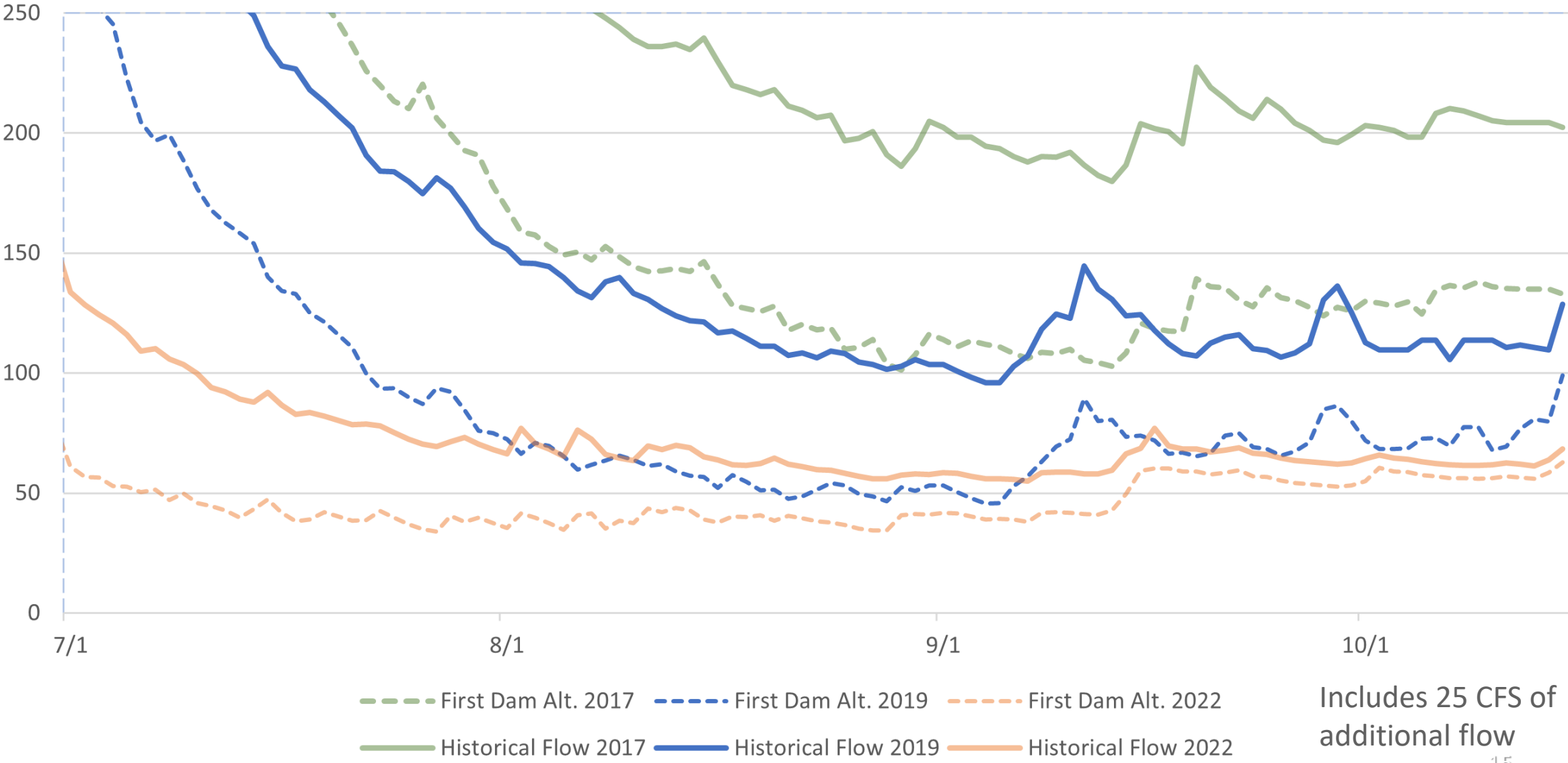
5-17-2021, 210 to 230 CFS

Logan River Reach 3 Comparison (Between First Dam and Crockett Diversion)

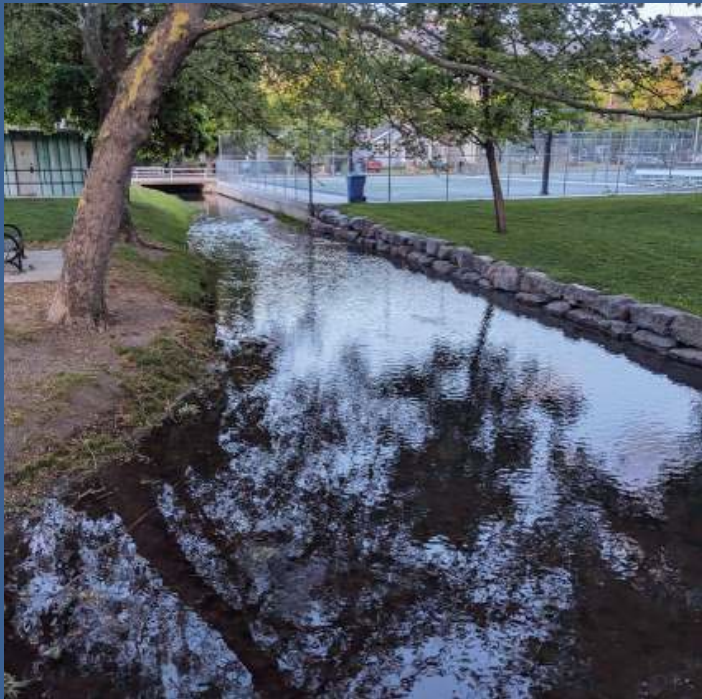
First Dam Alternative



Logan River Reach 3 Comparison (Between First Dam and Crockett Diversion)
First Dam Alternative; Late-summer months



MAINTAINS LITTLE LOGAN AESTHETICS



Central Park (Merlin Olsen)
at 5.5 CFS



Jens Johansen at 7 CFS



Fairgrounds at 9.2 cfs

OTHER BENEFITS

- Reduces flood potential
- Adds recreational connector trails
- Reduces waste water treatment costs
- Improves flood protection
- Reduces canal maintenance needs

SCHEDULE

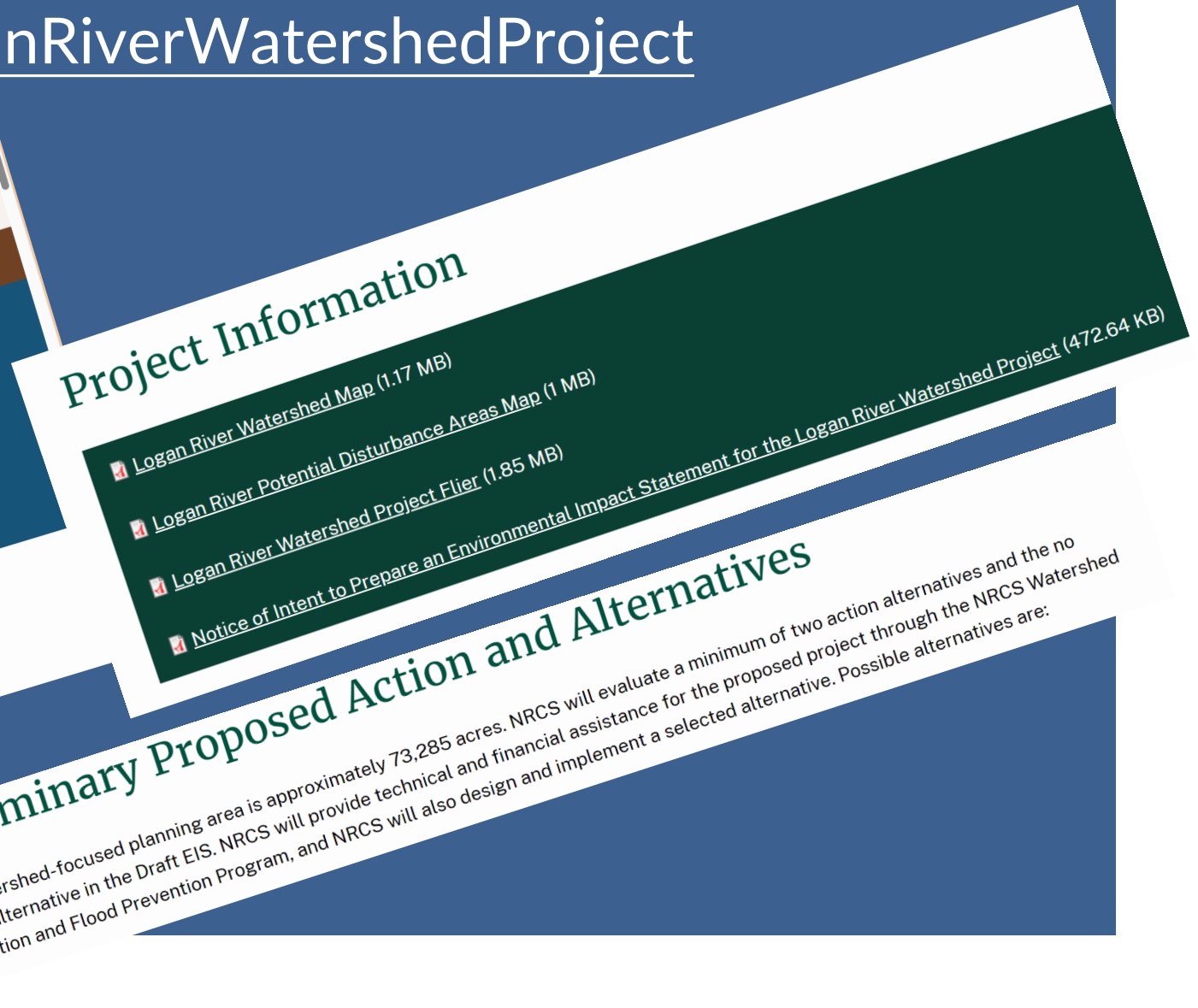
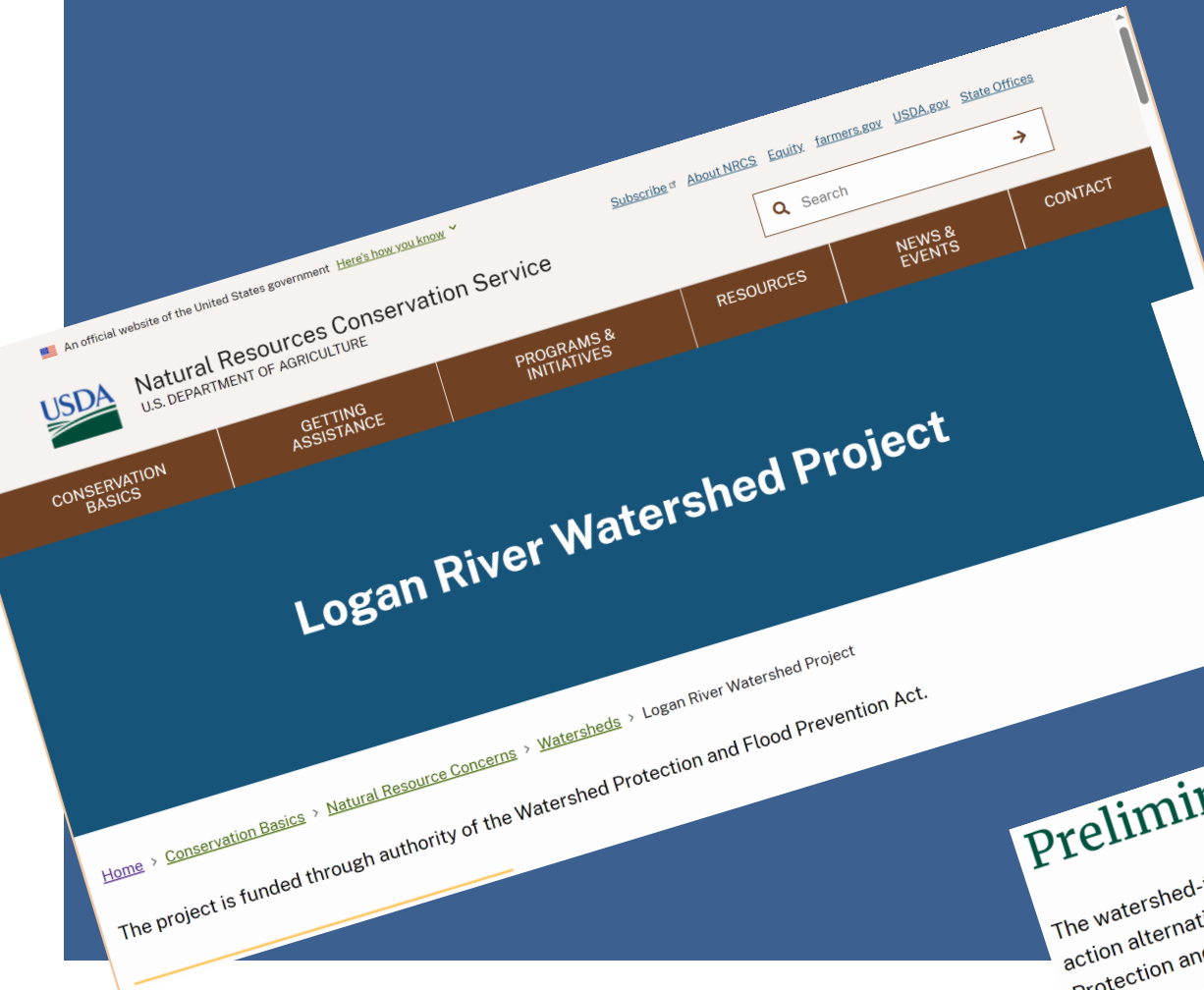
Approximate Project Timeline

- January 2021**
Public scoping and comment period
- March 2021**
Incorporated comments to develop alternatives
- March 2021 - 2024**
Transition from Environmental Assessment (EA) to Environmental Impact Statement (EIS)
- March 2024**
Additional public scoping and comment period
- April 2024**
Incorporated comments to develop three alternatives: FWOFI, FDA, CDA

- July 2024**
Sponsor and co-sponsors prefer FDA
Environmental evaluation of alternatives including Federal Agency consultation and coordination
- December 2024**
NRCS/sponsor review Draft EIS
- November 2025**
Estimated DEIS public comment period
- April 2026**
Final EIS and Record of Decision
- Spring 2026**
Project design
- Spring 2028**
Project construction
- Spring 2033**
Project completion

Additional descriptions of potential alternatives, and information are available on the project webpage:

<https://bit.ly/LoganRiverWatershedProject>



Preliminary Proposed Action and Alternatives

The watershed-focused planning area is approximately 73,285 acres. NRCS will evaluate a minimum of two action alternatives and the no action alternative in the Draft EIS. NRCS will provide technical and financial assistance for the proposed project through the NRCS Watershed Protection and Flood Prevention Program, and NRCS will also design and implement a selected alternative. Possible alternatives are:

Questions & Comments