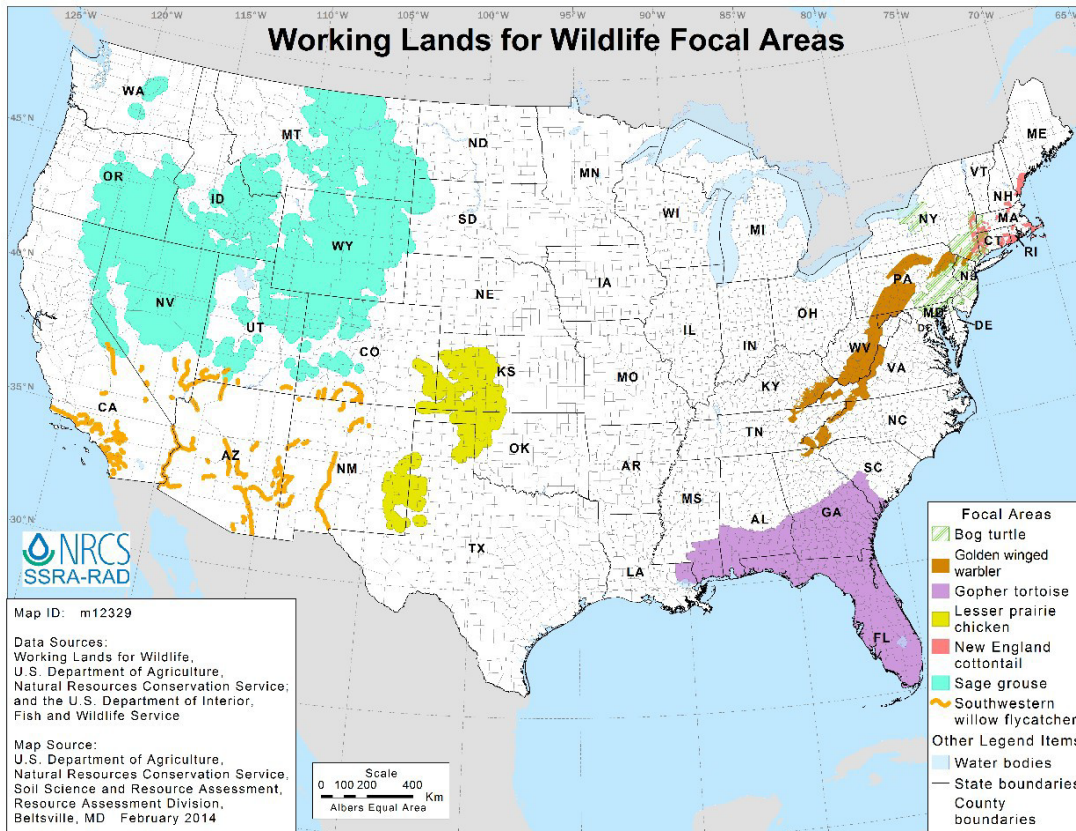


**Initiative Name and Acronym** – Greater Sage Grouse Initiative (GSGI)

**Description/Summary**

Working Lands for Wildlife (WLFW) is a partnership that leverages capabilities and resources, targets assistance where it is most needed, engages State and local partners, and works with agricultural producers, forest land managers, and Tribes. Working Lands for Wildlife promotes voluntary, incentive-based conservation on private and Tribal lands.

**Eligible Area:** Designated Sage Grouse Areas in Bowman, Slope, and Golden Valley Counties.



**Fund Code:** All applications will be assigned to the Greater Sage Grouse Initiative.

**Land Uses, Resource Concerns, and Practices:**

**Approved Landuse Type:**

- Cropland
- Range
- Pasture
- Farmstead
- Associated Ag Land

## Enclosure

### **Approved Resource Concerns:**

- Concentrated Erosion
- Degraded Plant Condition
- Fire Management
- Livestock Production Limitations
- Pest Pressure
- Terrestrial Habitat

**Approved Core Practices:** All applications must include a core practice.

- 645 – Upland Wildlife Habitat Management

### **Approved Supporting Practices:**

- 314 – Brush Management
- 315 – Herbaceous Weed Control
- 327 – Conservation Cover
- 328 – Conservation Crop Rotation
- 338 – Prescribed Burning
- 340 – Cover Crops
- 342 – Critical Area Planting
- 378 – Pond
- 380 – Windbreak/Shelterbelt Establishment & Renovation
- 382 – Fence
- 383 – Fuel Break
- 384 – Wood Residue Treatment
- 388 – Irrigation Field Ditch
- 390 – Riparian Herbaceous Cover
- 391 – Riparian Forest Buffer
- 394 – Firebreak
- 410 – Grade Stabilization
- 430 – Irrigation Pipeline
- 441 – Irrigation System, Micro Irrigation
- 442 – Sprinkler System
- 443 – Irrigation System, Surface and Subsurface
- 449 – Irrigation Water Management
- 472 – Access Control
- 484 - Mulching
- 490 – Tree and Shrub Prep
- 500 – Obstruction Removal
- 511 – Forage Harvest Management
- 512 – Pasture & Hay Planting
- 516 – Livestock Pipeline
- 521 – Pond Sealing or Lining, Geomembrane or Geosynthetic Clay Liner
- 528 – Prescribed Grazing
- 533 – Pumping Plant
- 548 – Grazing Land Mechanical Treatment – No financial assistance
- 550 – Range Planting
- 560 – Access Road
- 561 – Heavy Use Area Protection

## Enclosure

- 574 – Spring Development
- 576 – Livestock Shelter Structure
- 580 – Streambank and Shoreline Protection
- 584 – Channel Bed Stabilization
- 587 – Structure for Water Control
- 595 – Pest Management Conservation System
- 612 – Tree/Shrub Establishment
- 614 – Watering Facility
- 642 – Water Well
- 643 – Restoration of Rare and Declining Habitats
- 644 – Wetland Wildlife Habitat Management
- 649 – Structures for Wildlife
- 654 – Road/Trail/Landing Closure and Treatment
- 657 – Wetland Restoration

### Other Information:

All GSGI applicants must agree to follow the conservation practice standards and treatment measures as described in the USFWS 2016 SGI Conference Report, in order to be eligible for ranking.

Practice Guidelines: See enclosure