



March 9, 2015

CONNECTICUT INSTRUCTION 430-003 – CONNECTICUT NRCS OFFSITE METHODS FOR
CERTIFIED WETLAND DETERMINATIONS

PURPOSE

To inform NRCS employees of the instructions for performing offsite (level -1) determinations for National Food Security Act Manual purposes.

ATTACHMENTS

- Connecticut Instruction for NRCS Offsite Methods for Certified Wetland Determinations
- Flowchart of steps involved in making a wetland determination when an onsite inspection is unnecessary.

Deborah Surabian
Lisa R. Coverdale *Acting STC*
State Conservationist

**CONNECTICUT INSTRUCTION 430-003 – CONNECTICUT NRCS OFFSITE METHODS
FOR CERTIFIED WELAND DETERMINATIONS**

Under the Food Security Act of 1985 (FSA), as amended, NRCS has the sole responsibility to make wetland determinations for USDA program participants. This responsibility is accomplished through development of offsite and onsite wetland identification procedures (7 CFR Section 12.30(a)(4)). Per Title 180, National Food Security Act Manual (NFSAM), Part 527, Food Security Act Wetland Identification Procedures (as distributed through Circular 6, December 2010), NRCS adopted the U.S. Army Corps of Engineers' (USACE) "Corps of Engineers Wetland Delineation Methods" (Corps manual), Part IV, with certain variances.

The Corps manual provides that wetlands can be identified using offsite methods only (level-1 determination), onsite methods only (level-2 determination), or a combination of onsite and offsite methods (level-3 determination).

For level-1 determinations, CT NRCS Staff will refer to the **January 1987 Corps of Engineers Wetlands Delineation Manual** (paragraphs 50 – 62, found in the pages below) with appropriate variances from Circular 6.

Part IV: Methods	35
Section A. Introduction	35
Section B. Preliminary Data Gathering and Synthesis	36
Section C. Selection of Method	44
Section D. Routine Determinations	45
Subsection 1 - Onsite Inspection Unnecessary	45

This reference will be updated as subsequent editions of the Wetland Delineation Manual are released.

Refer to **CONNECTICUT INSTRUCTION 430-004** for a list of CT NRCS staff certified to conduct Wetland Conservation Compliance technical determinations for NFSAM.

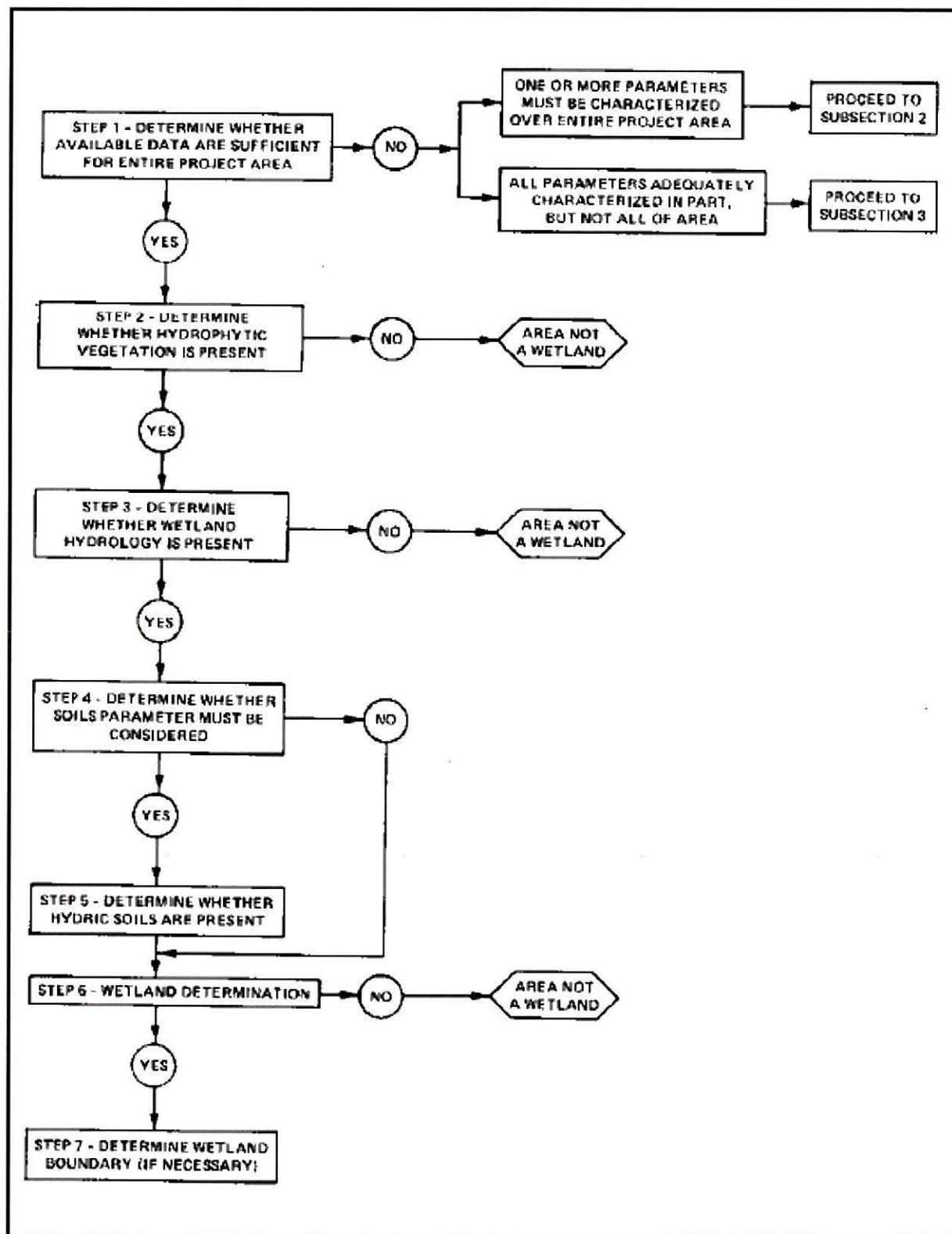


Figure 13. Flowchart of steps involved in making a wetland determination when an onsite inspection is unfeasible.