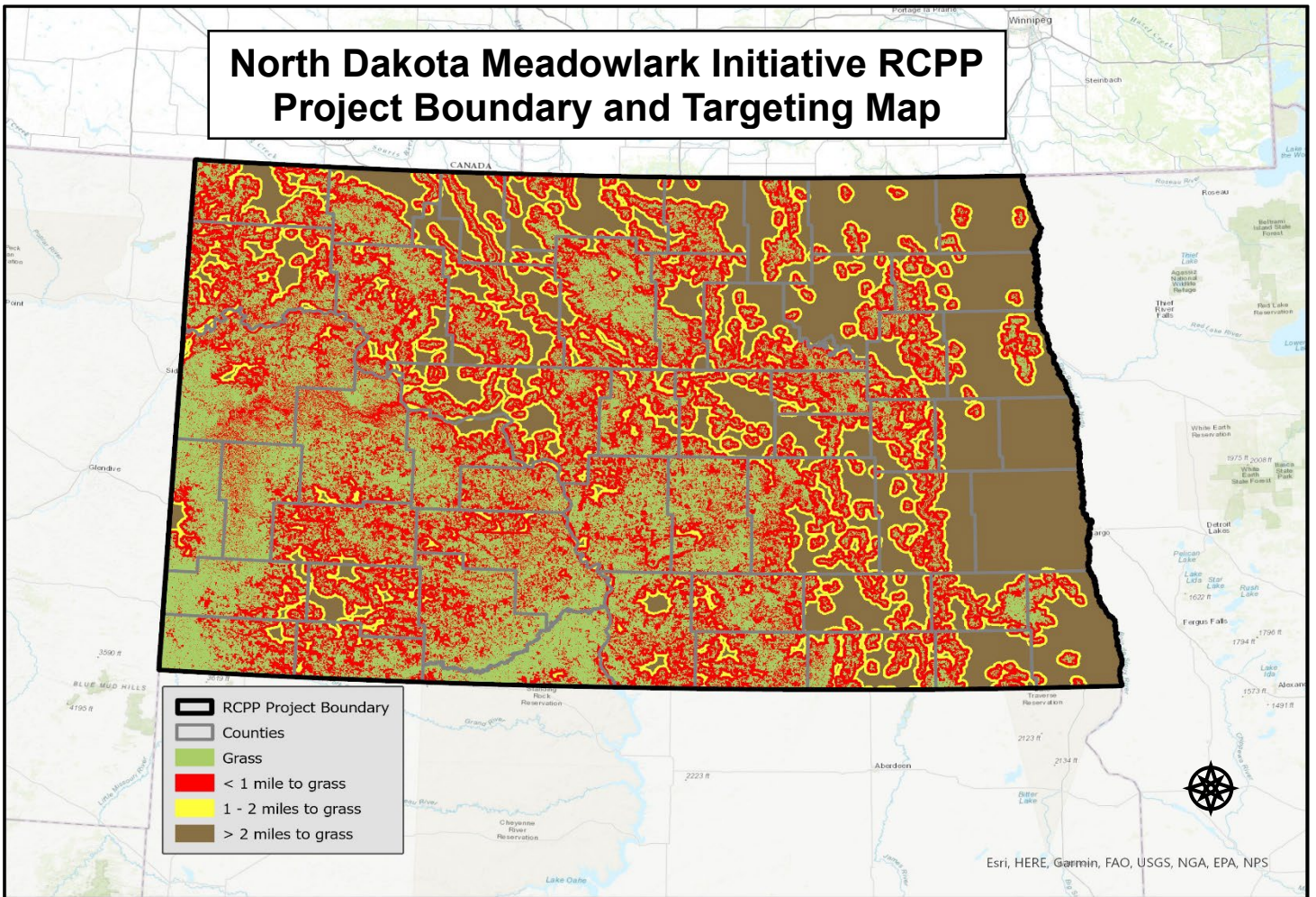


North Dakota Meadowlark Initiative RCPP Project Boundary and Targeting Map



Green areas are blocks of grass $> 2 \text{ mi}^2$ that serve as anchors for the management and enhancement of adjacent grasslands, increasing habitat by decreasing fragmentation.

Red and **yellow** indicate areas within 1 or 2 miles, respectively, of anchor grasslands. These zones can be targeted for enhancement of existing grasslands or restorations of grasslands to increase patch size and connectivity.

Areas in **brown** are also suitable for enhancement and restoration, but are lower priorities because of their distance to grass anchor blocks.