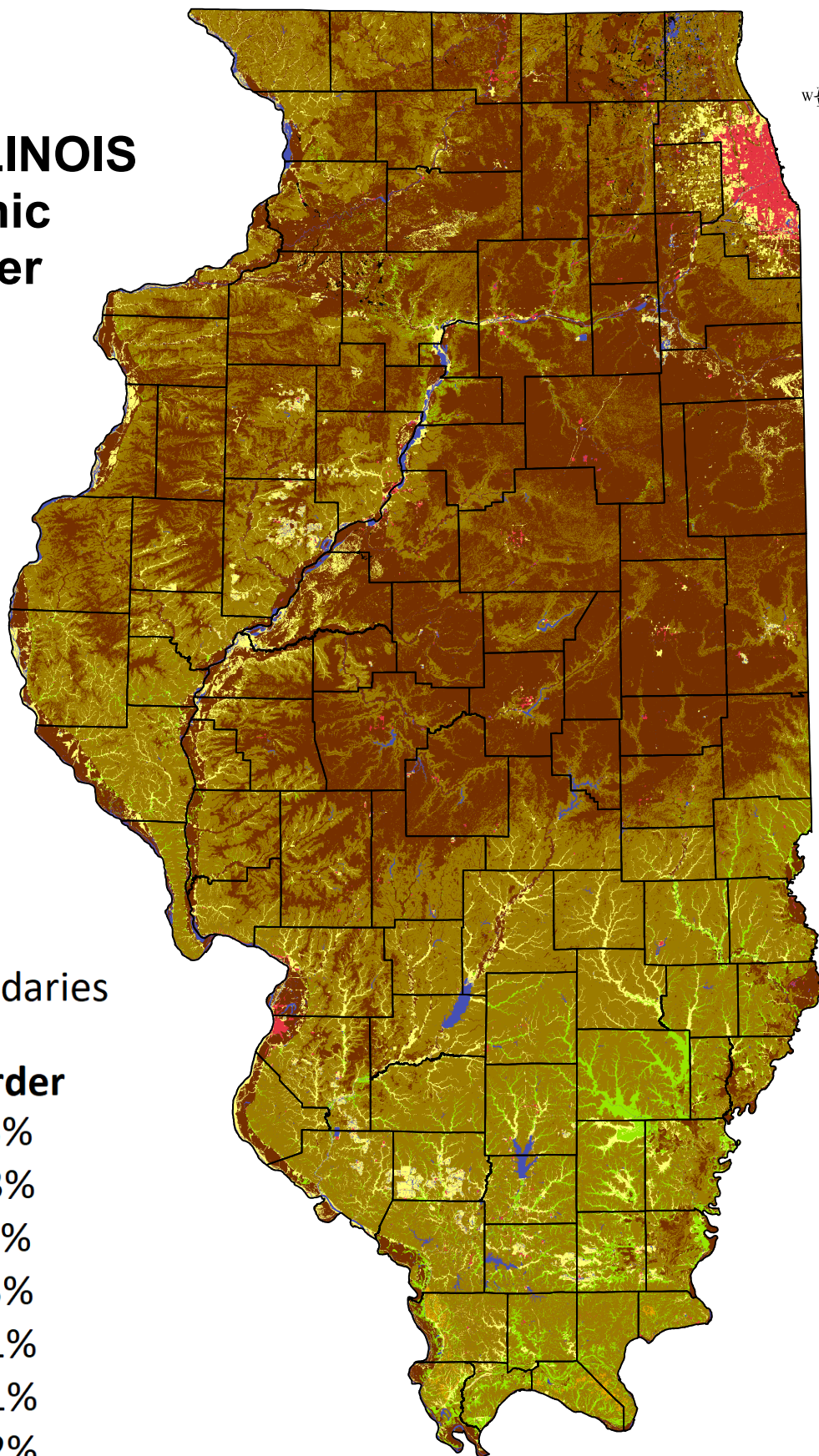


# SOILS of ILLINOIS

## Taxonomic Soil Order




### LEGEND

 County Boundaries


### SSURGO SOILS

#### Soil Taxonomic Order

 Alfisols 45%


 Mollisols 43%

 Entisols 6%

 Inceptisols 3%

 Histosols <1%

 Ultisols <1%

 Water 2%

 Miscellaneous Areas

SOURCE: USDA, NRCS, gSSURGO Data;  
<https://datagateway.nrcs.usda.gov/>  
<https://websoilsurvey.nrcs.usda.gov/app/HomePage.htm>

