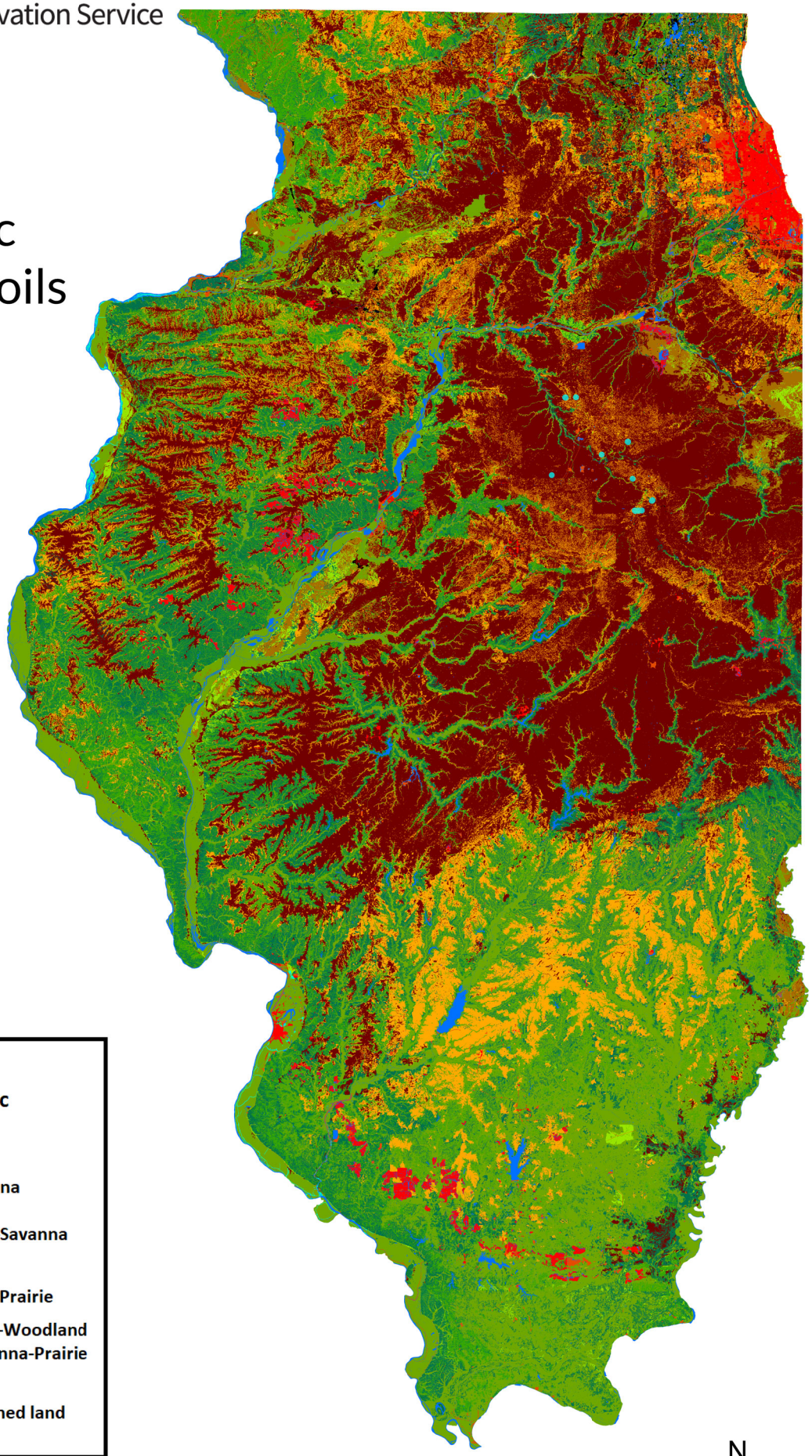


Illinois Potential Ecotypes Based on Taxonomic Classification and Soils



LEGEND
Potential Ecotypes based on Taxonomic Classification and Soils

- Alfic - Likely Woodland
- Alfic - Possibly Woodland or Eroded Savanna
- Relatively Young Soil - Likely Woodland
- Relatively Young Soil - Possibly Woodland-Savanna
- Transitional - Possibly Savanna
- Transitional - Possibly Savanna or Eroded Prairie
- Dark Surface - Possibly Prairie or Savanna-Woodland
- Dark Surface - Possibly Woodland or Savanna-Prairie
- Dark Surface - Likely Prairie
- Miscellaneous areas, Urban land, and Mined land
- Water

