



Natural
Resources
Conservation
Service

Arizona

Basin Outlook Report

April 1, 2024



Issued by

Terry Cosby
Chief
Natural Resources Conservation Service
U.S. Department of Agriculture

Released by

Keisha L. Tatem
State Conservationist
Natural Resources Conservation Service
Phoenix, Arizona

Basin Outlook Reports And Federal – State – Private Cooperative Snow Surveys

How forecasts are made

Most of the annual streamflow in Arizona originates as snowfall that has accumulated in the mountains during the winter and early spring. As the snowpack accumulates, hydrologists estimate the runoff that will occur when it melts. Measurements of snow water equivalent at selected manual snow courses and automated Snow Telemetry (SNOTEL) sites, along with precipitation and streamflow values, are used in statistical and simulation models to prepare runoff forecasts. These forecasts are coordinated between hydrologists in the Natural Resources Conservation Service (NRCS) the National Weather Service, and the Salt River Project.

Forecasts of any kind are not perfect. Streamflow forecast uncertainty arises from three primary sources: (1) uncertainty of future weather conditions, (2) uncertainty in the forecasting procedure, and (3) errors in the data. The forecast, therefore, must be interpreted not as a single value but rather as a range of values with specific probabilities of occurrence. The middle of the range is expressed by the 50% exceedance probability forecast, for which there is a 50% chance that the actual flow will be above, and a 50% chance that the actual flow will be below, this value. To describe the expected range around this 50% value, four other forecasts are provided, two smaller values (90% and 70% exceedance probability) and two larger values (30%, and 10% exceedance probability). For example, there is a 90% chance that the actual flow will be more than the 90% exceedance probability forecast.

The wider the spread among these values, the more uncertain the forecast. As the season progresses, forecasts become more accurate, primarily because a greater portion of the future weather conditions become known. This is reflected by a narrowing of the range around the 50% exceedance probability forecast. Users should take this uncertainty into consideration when making operational decisions by selecting forecasts corresponding to the level of risk they are willing to assume about the amount of water to be expected. If users anticipate receiving a lesser supply of water, or are concerned about having an adequate water supply, they may want to base their decisions on the 90% or 70% exceedance probability forecasts. On the other hand, if users anticipate receiving too much water, or are concerned about the threat of flooding, they may want to base their decisions on the 30% or 10% exceedance probability forecasts. Regardless of the forecast value users choose, they should be prepared to deal with either more or less water.



For more water supply and resource management information, contact:

Travis Kolling
Water Supply Specialist
230 N. First Ave., Suite 509
Phoenix, AZ 85003-1706
Phone: (602) 280-8834
Email: travis.kolling@az.usda.gov

The United States Department of Agriculture (USDA) prohibits discrimination in its programs on the basis of race, color, national origin, sex, religion, age, disability, political beliefs and marital or familial status. (Not all prohibited bases apply to all programs.) Persons with disabilities who require alternative means for communication of program information (Braille, large print, audiotape, etc.) should contact USDA's TARGET Center at 202-720-2600 (voice and TDD).

To file a complaint, write the Secretary of Agriculture, U.S. Department of Agriculture, Washington, D.C., 20250, or call 1-800-245-6340 (voice) or (202) 720-1127 (TDD). USDA is an equal employment opportunity employer.

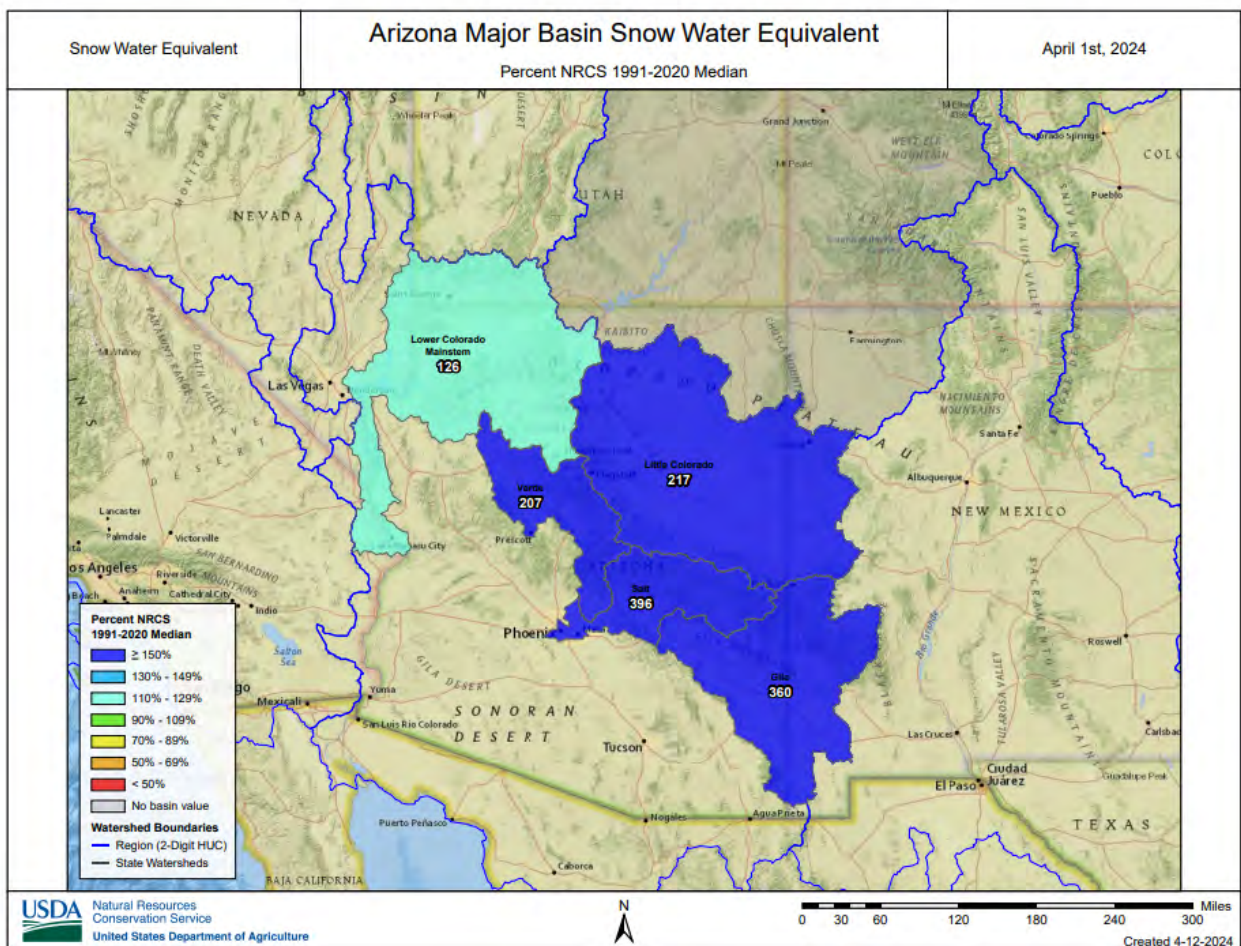
ARIZONA Basin Outlook Report as of April 1, 2024

SUMMARY

As of April 1, snowpack is at well above median levels throughout the major basins of the state. Precipitation for the month of March was well above median in the major river basins. The Salt and Verde River reservoir system stands at 88 percent of capacity, while San Carlos Reservoir is at 41 percent of capacity. The forecast calls for median to well above median runoff in the major basins for the spring runoff period.

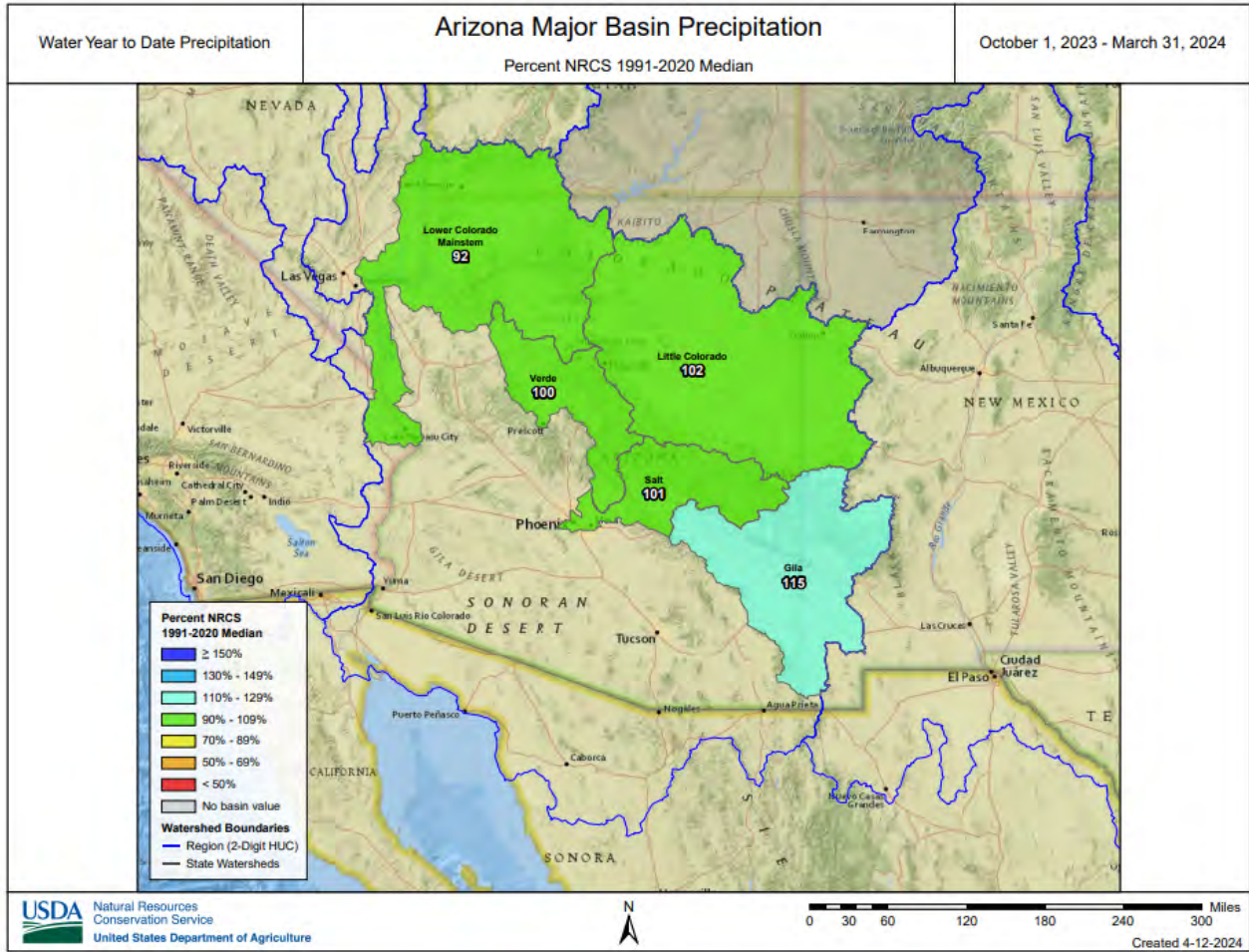
SNOWPACK

Snow water equivalent in the state's major river basins are well above median levels, ranging from 126 percent of median in the Lower Colorado Mainstem to 396 percent of median in the Salt River Basin.



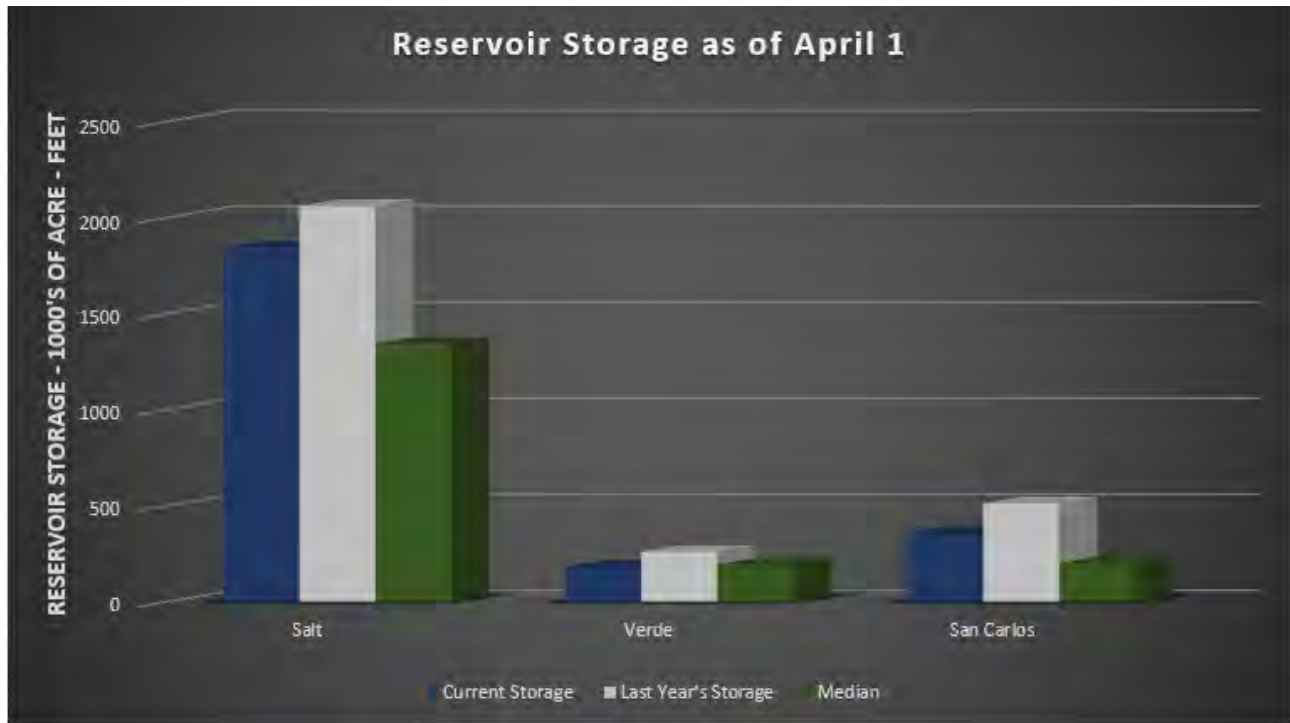
PRECIPITATION

Mountain data from NRCS SNOTEL sites and NWS Cooperator gages show that precipitation for March was well above median in the major river basins, while cumulative precipitation since October 1 ranged from median to above median levels throughout the state.



RESERVOIR STORAGE

As of April 1, the Salt and Verde River reservoir system stands at 88 percent of capacity. San Carlos Reservoir is currently at 41 percent of capacity.

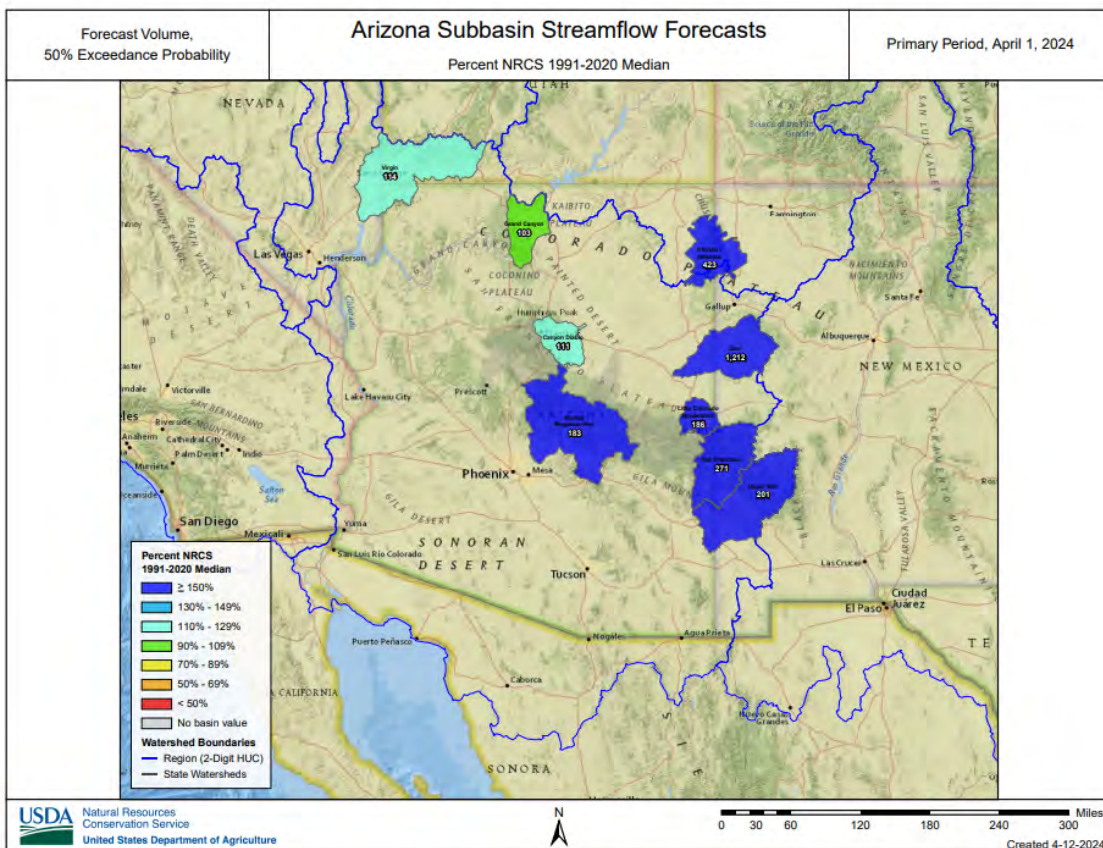
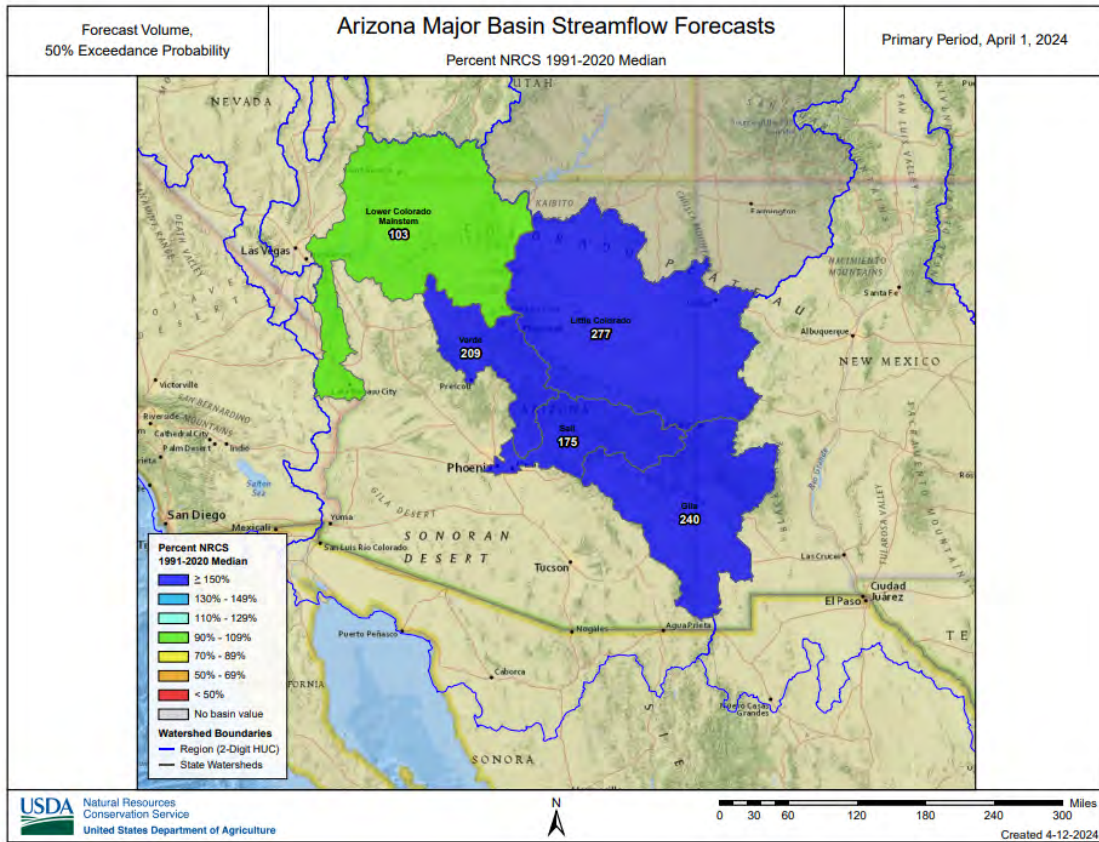


Key storage volumes displayed in thousands of acre-feet (x1000):

<u>Reservoir</u>	<u>Current Storage</u>	<u>Last Year Storage</u>	<u>30-Year Median</u>	<u>Storage Capacity</u>
Salt River System	1842.2	2061.3	1344.0	2025.8
Verde River System	181.8	259.8	193.6	287.4
San Carlos Reservoir	360.2	513.0	200.4	875.0
Lyman Lake	12.3	11.9	10.5	30.0
Lake Havasu	573.4	587.8	566.1	619.0
Lake Mohave	1682.0	1734.0	1684.0	1810.0
Lake Mead	9629.0	7401.7	15296.0	26159.0
Lake Powell	7717.5	5375.0	12880.0	24322.0

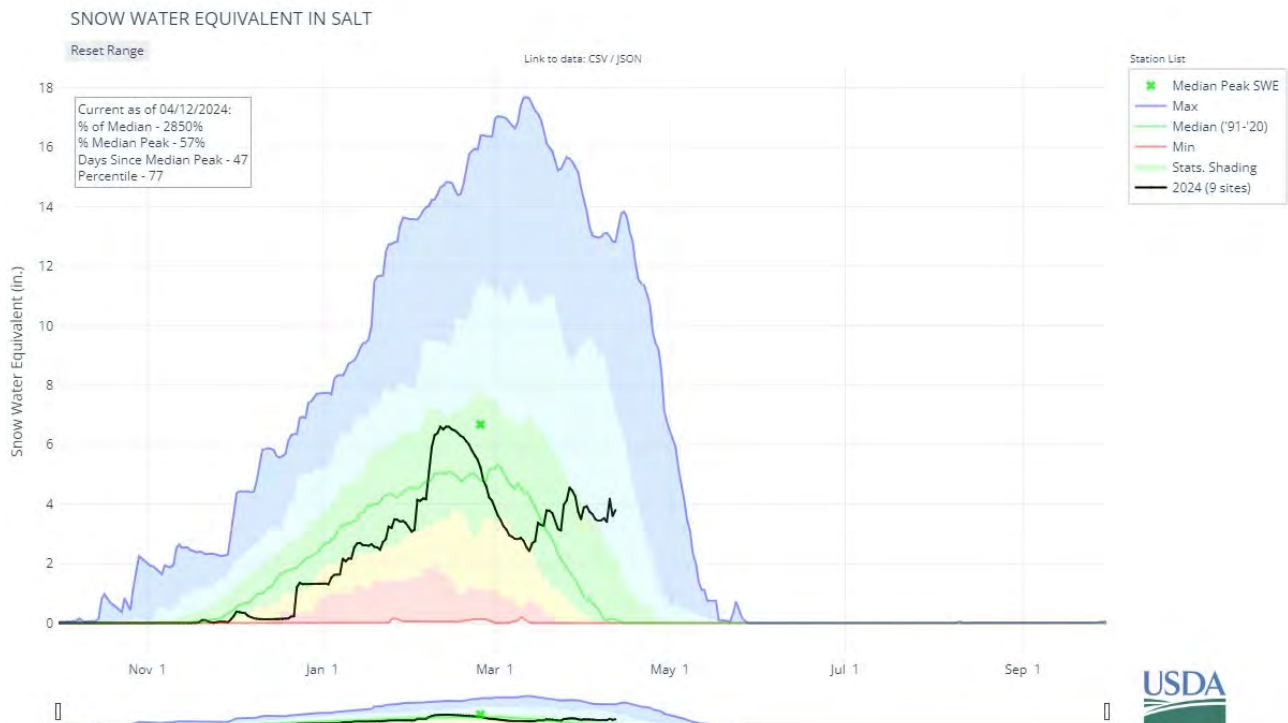
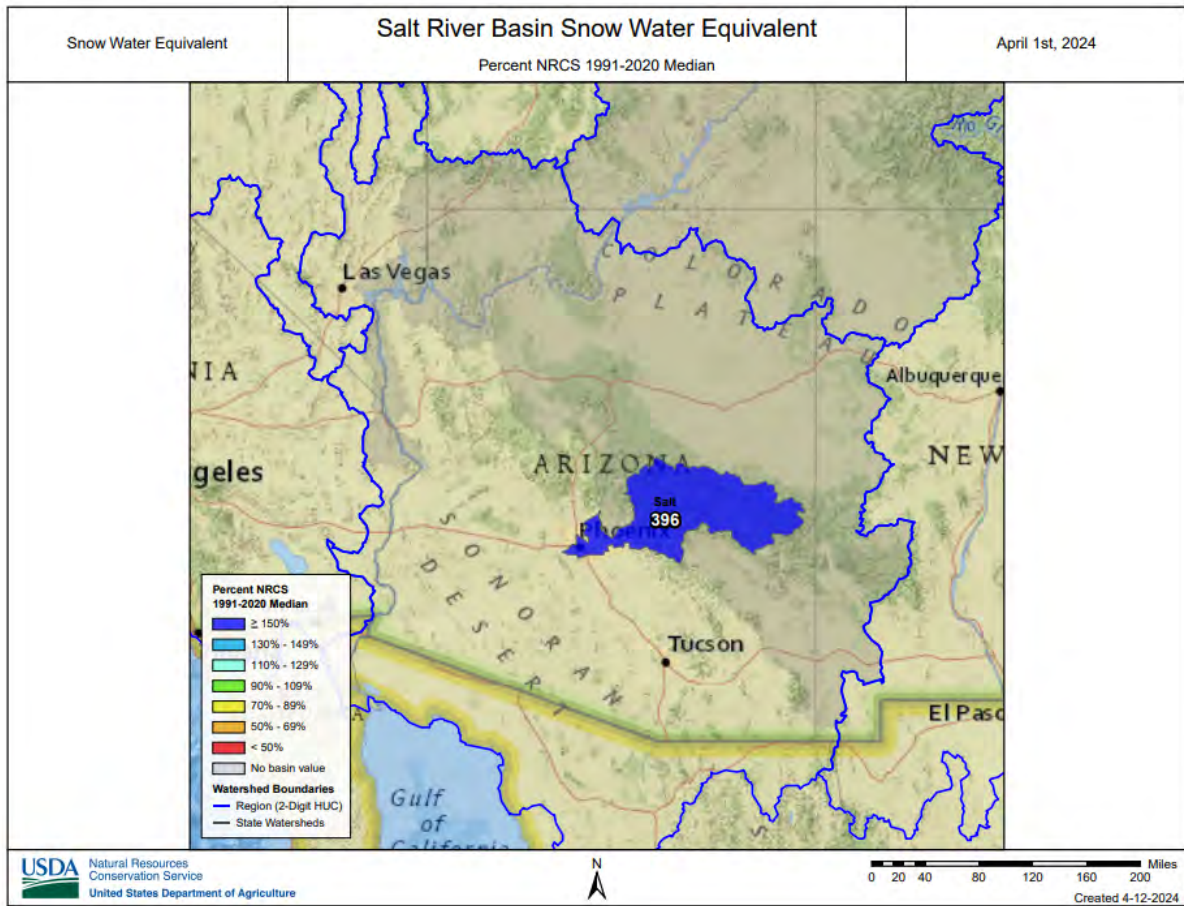
STREAMFLOW

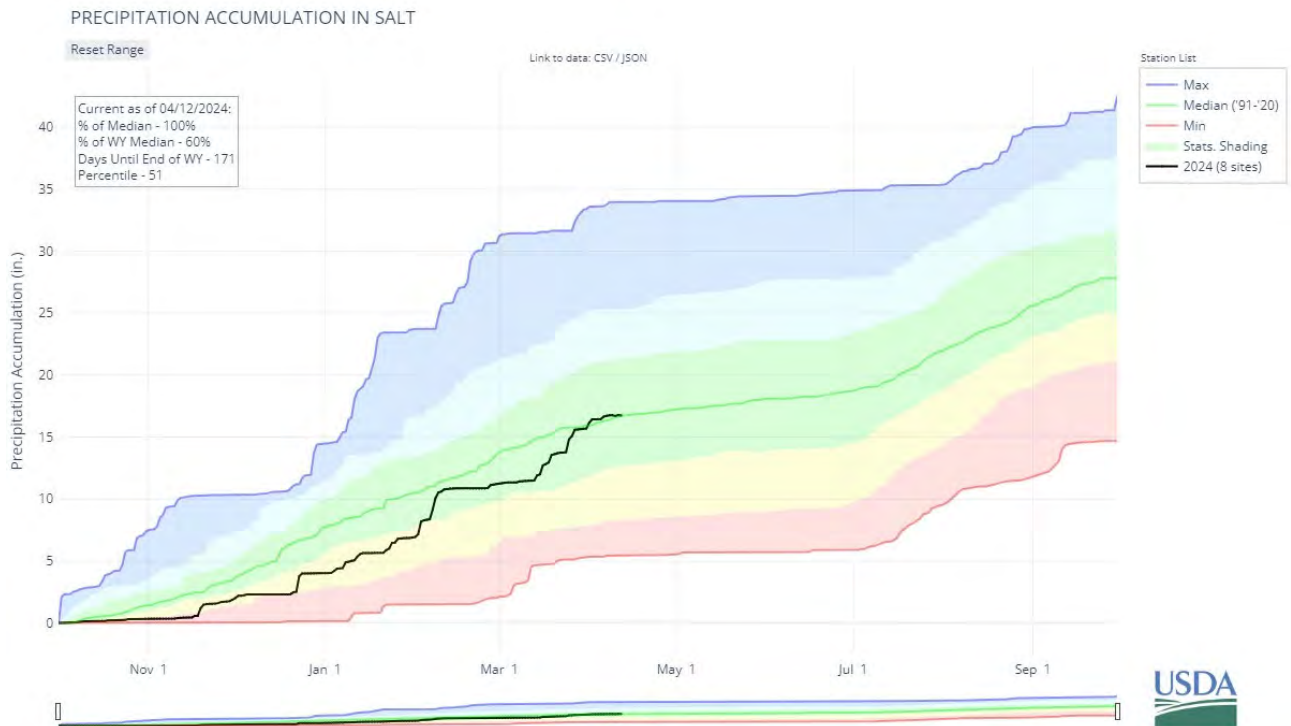
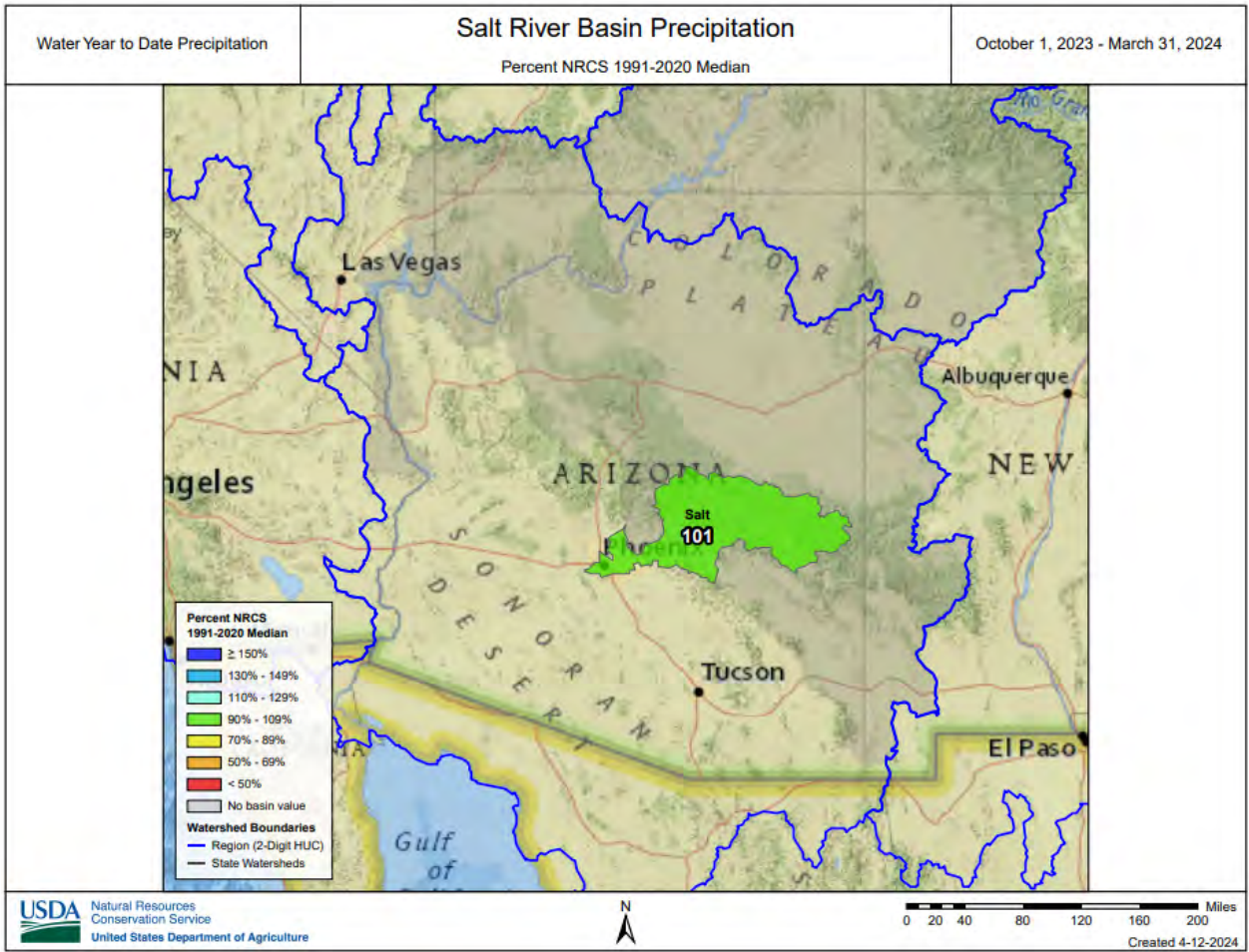
As of April 1, the forecast calls for median to well above median streamflow for the spring runoff period, ranging from 103 percent of median in the Lower Colorado Mainstem to 277 percent of median in the Little Colorado River Basin. Please refer to the basin forecast tables found in this report for more information regarding water supply forecasts.

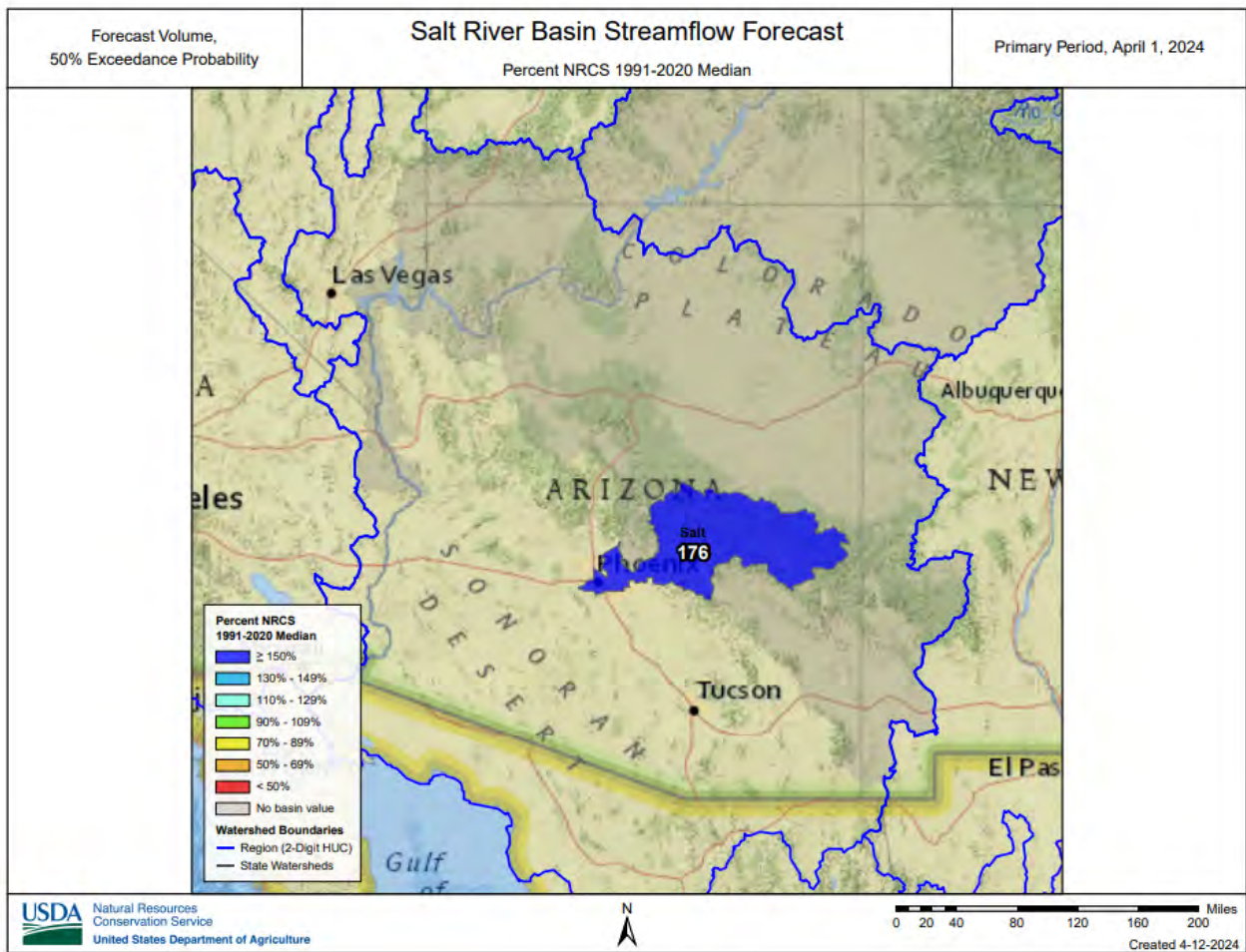


SALT RIVER BASIN as of April 1, 2024

Well above median streamflow levels are forecast for the basin. In the Salt River, near Roosevelt, the forecast calls for 169% of median streamflow through May, while at Tonto Creek, the forecast calls for 313% of median streamflow through May. Snow survey measurements show the Salt snowpack to be at 396% of median.







Data Current As of: 4/4/2024 8:52:29 AM

Salt Streamflow Forecasts - April 1, 2024

Forecast Exceedance Probabilities For Risk Assessment
Chance that actual volume will exceed forecast

Salt	Forecast Period	90% (KAF)	70% (KAF)	50% (KAF)	% Median	30% (KAF)	10% (KAF)	30yr Median (KAF)
Salt R nr Roosevelt ²	APR	64	76	87	164%	98	116	53
	APR-MAY	102	122	135	169%	149	173	80
Tonto Ck ab Gun Ck nr Roosevelt	APR	6.2	8.9	11.8	393%	16.2	27	3
	APR-MAY	7.3	9.7	12.2	313%	15.8	24	3.9

1) 90% And 10% exceedance probabilities are actually 95% And 5%

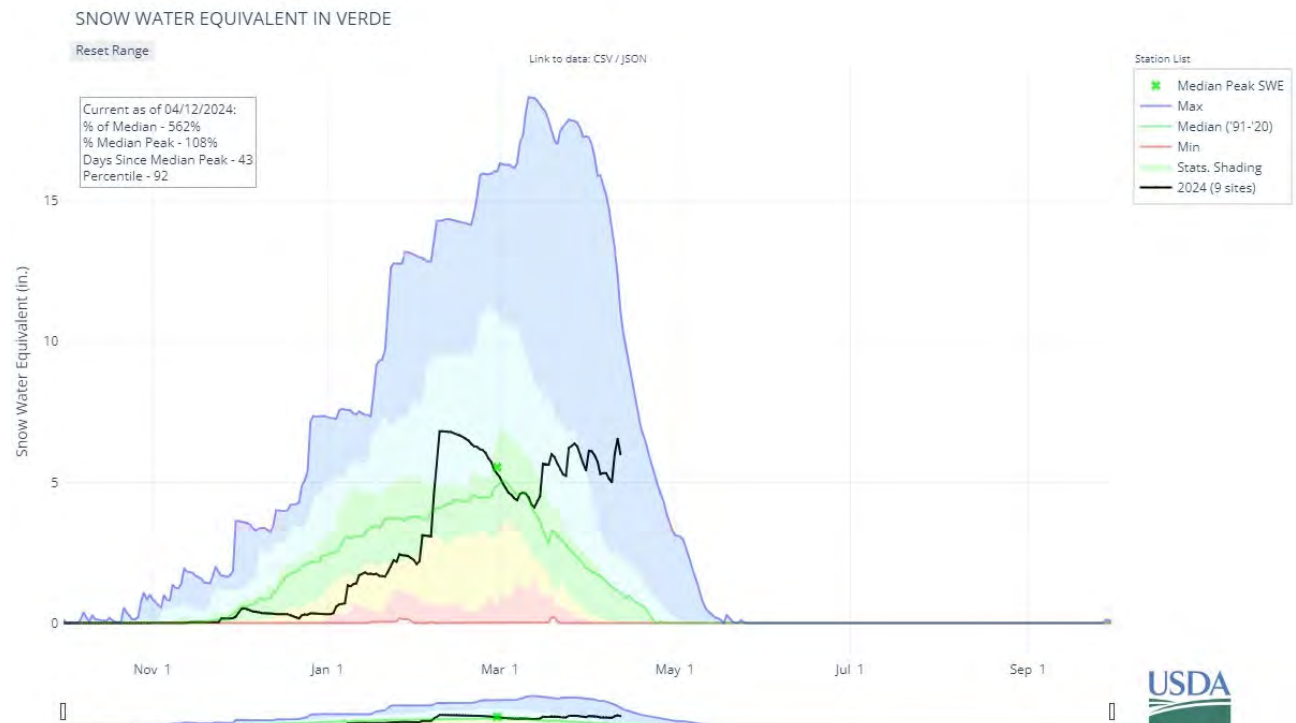
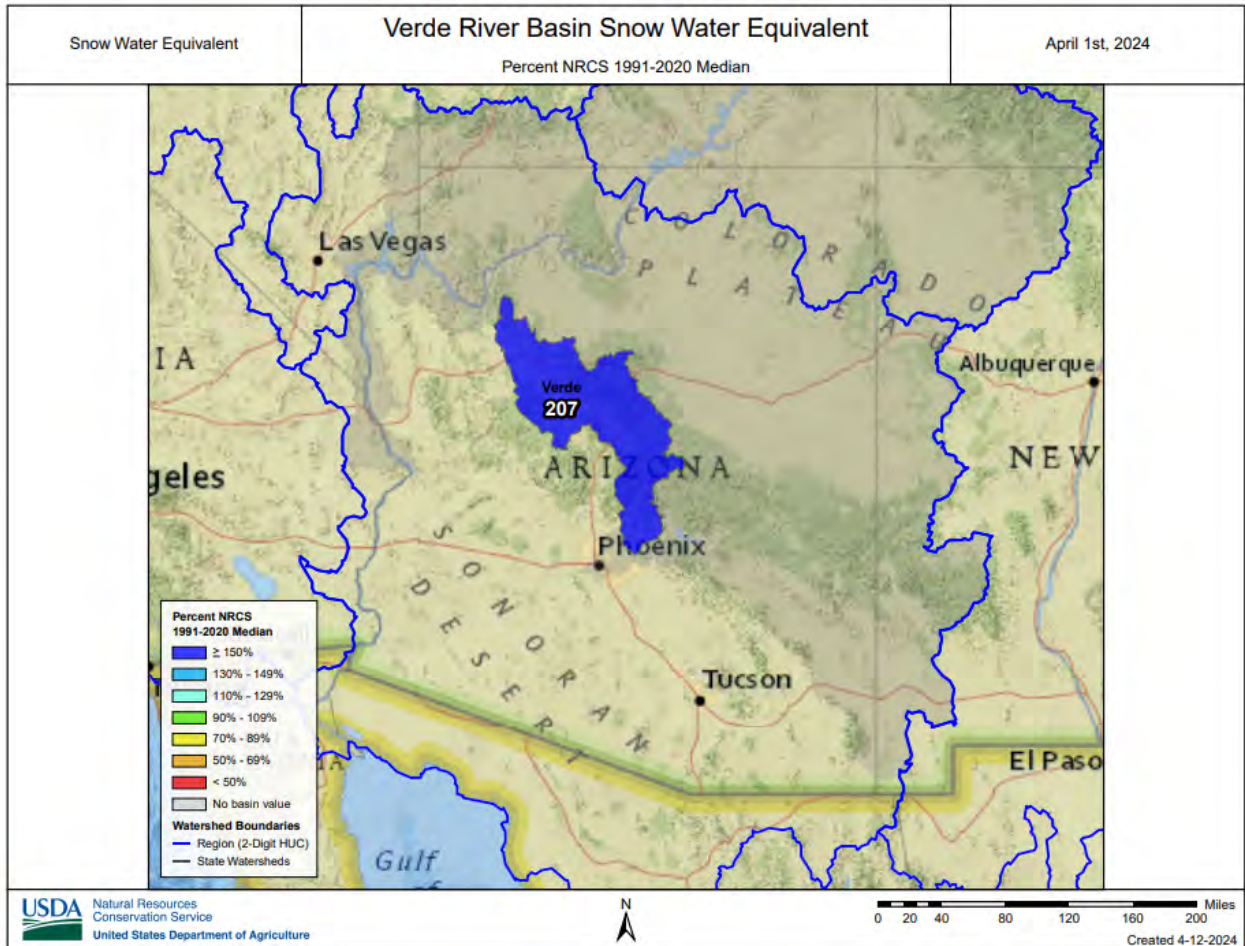
2) Forecasts are For unimpaired flows. Actual flow will be dependent On management of upstream reservoirs And diversions

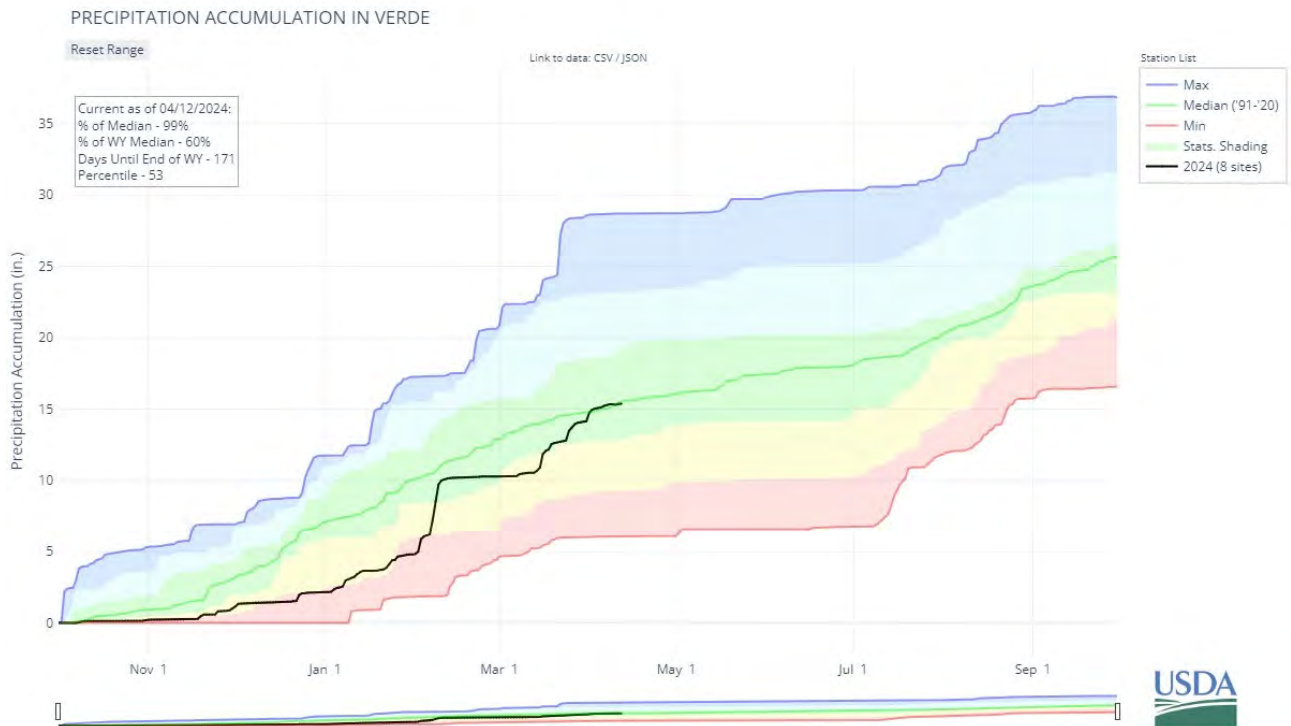
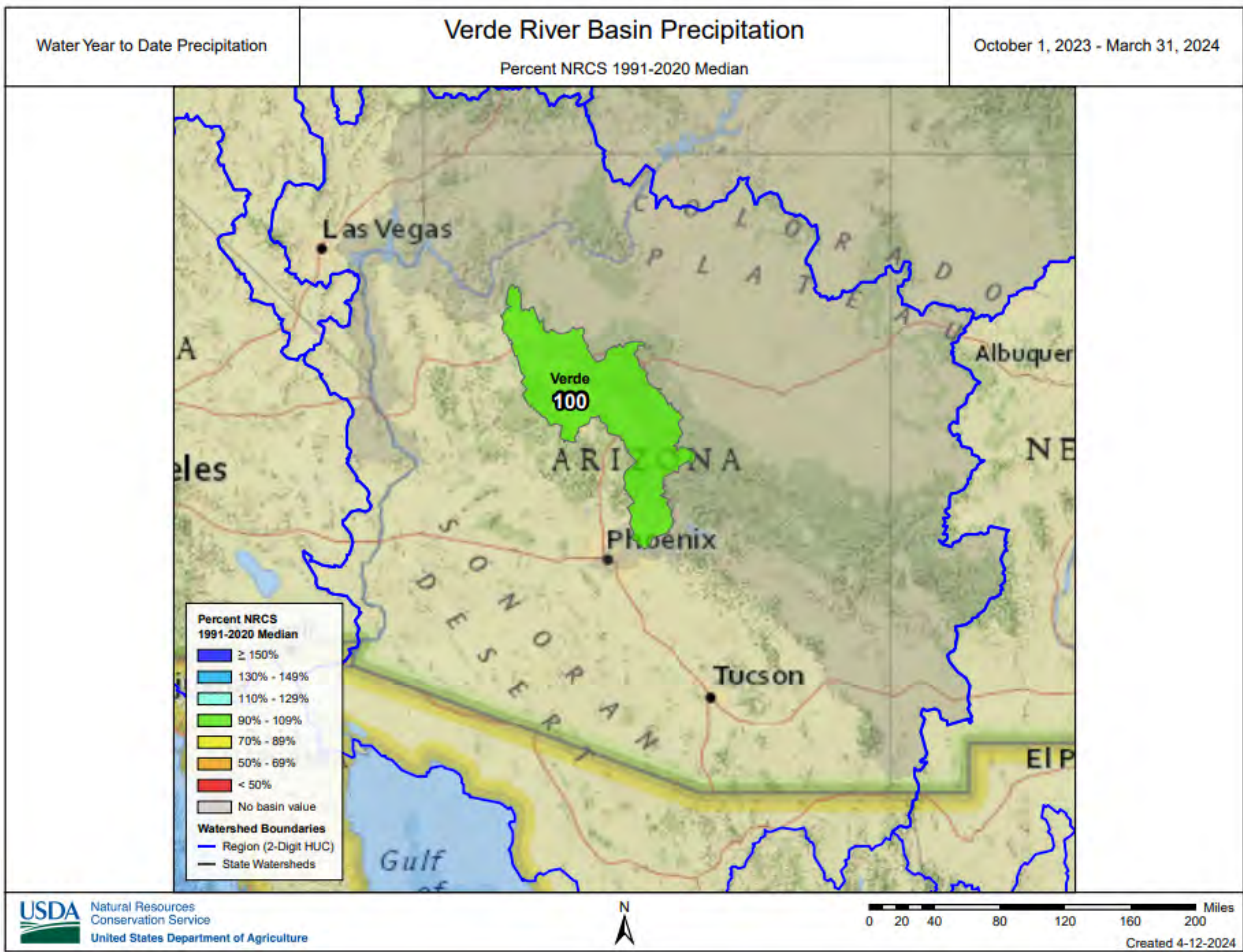
Reservoir Storage End of March, 2024	Current (KAF)	Last Year (KAF)	Median (KAF)	Capacity (KAF)
Salt River Reservoir System		2061.3	1344.0	2025.8

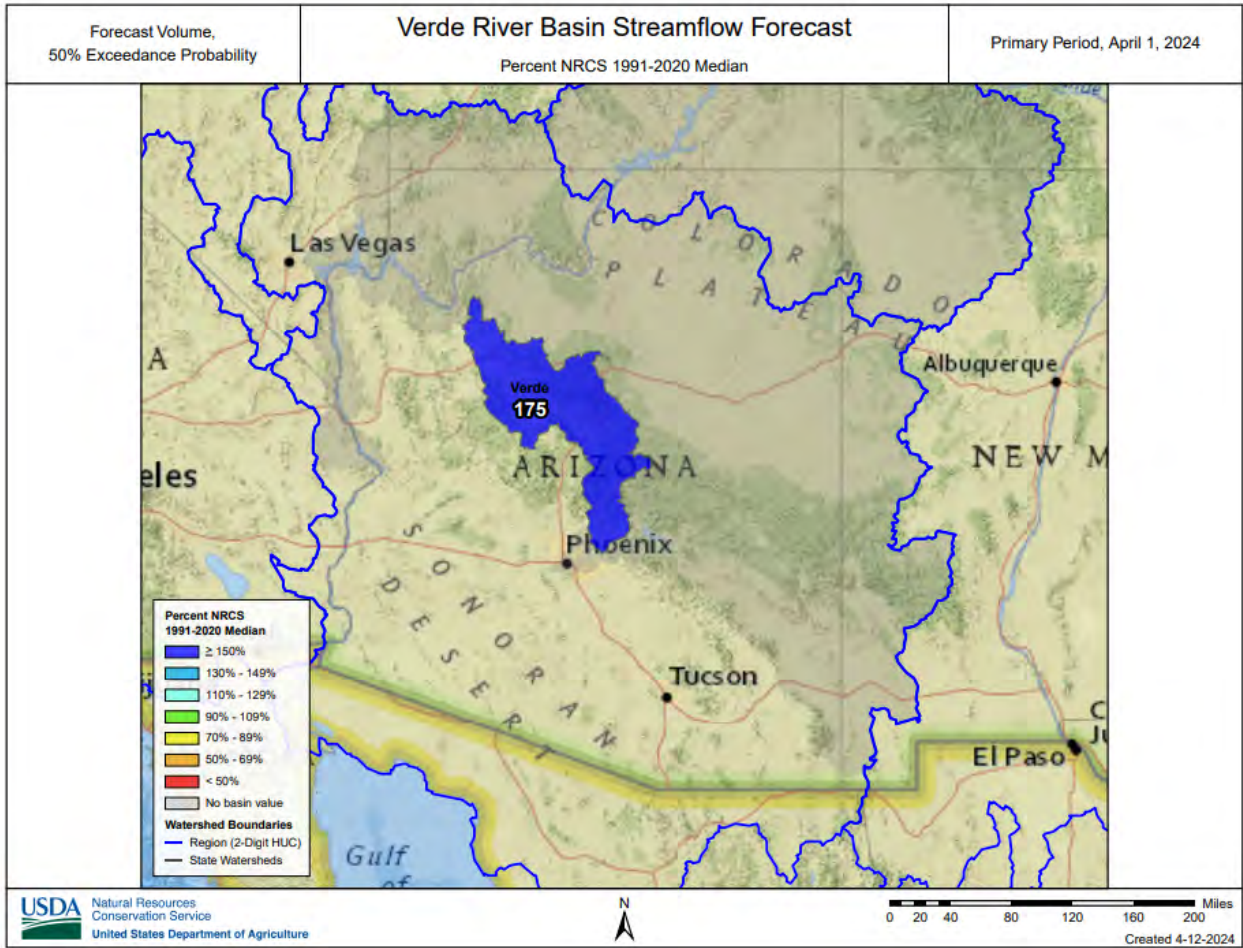
Watershed Snowpack Analysis April 1, 2024	# of Sites	% Median	Last Year % Median
Salt	11	396%	581%
Central Mogollon Rim	8	289%	609%
Upper Salt	8	403%	417%

VERDE RIVER BASIN as of April 1, 2024

Well above median streamflow levels are forecast for the basin. In the Verde River above Horseshoe Dam, the forecast calls for 209% of median streamflow through May. Snow survey measurements show the Verde snowpack to be at 207% of median.







Data Current As of: 4/4/2024 8:52:31 AM

Verde Streamflow Forecasts - April 1, 2024

Forecast Exceedance Probabilities For Risk Assessment
Chance that actual volume will exceed forecast

Verde	Forecast Period	90% (KAF)	70% (KAF)	50% (KAF)	% Median	30% (KAF)	10% (KAF)	30yr Median (KAF)
Verde R bl Tangle Ck ab Horseshoe Dam ²	APR	14.6	19.7	24	175%	31	45	13.7
	APR-MAY	35	43	48	209%	54	71	23

1) 90% And 10% exceedance probabilities are actually 95% And 5%

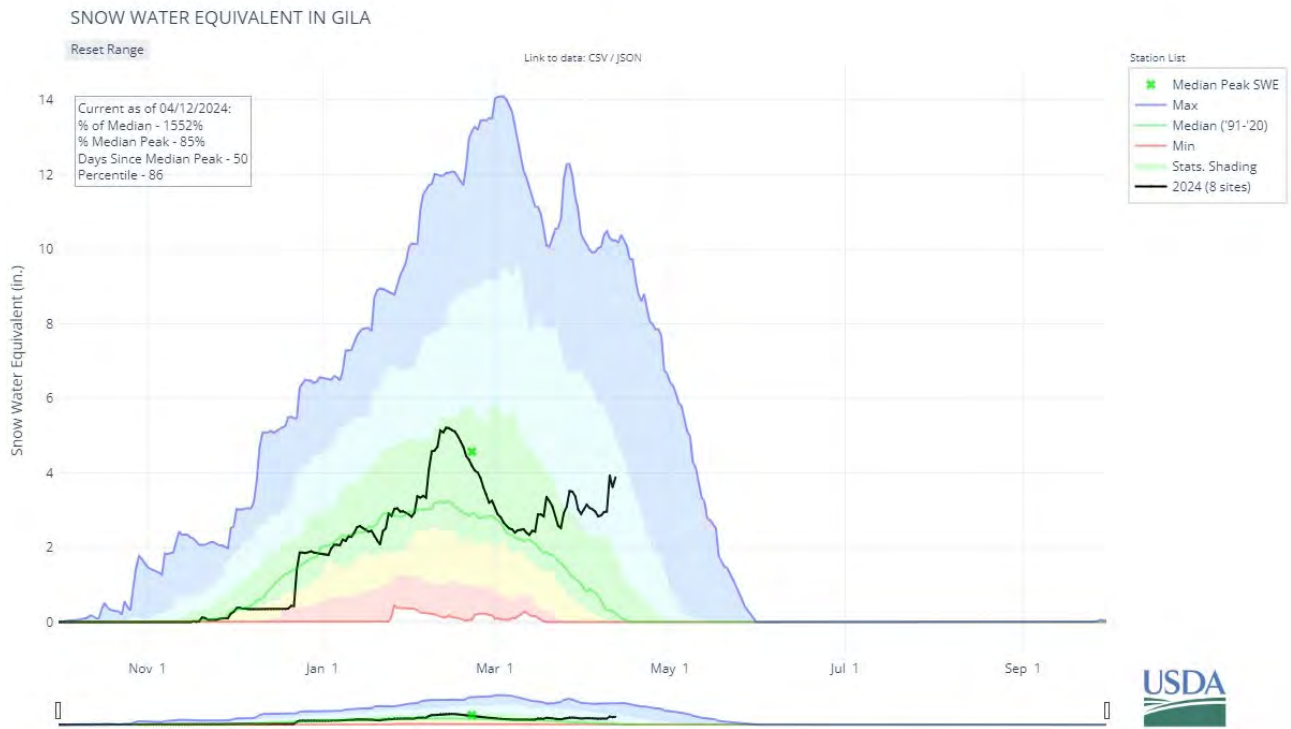
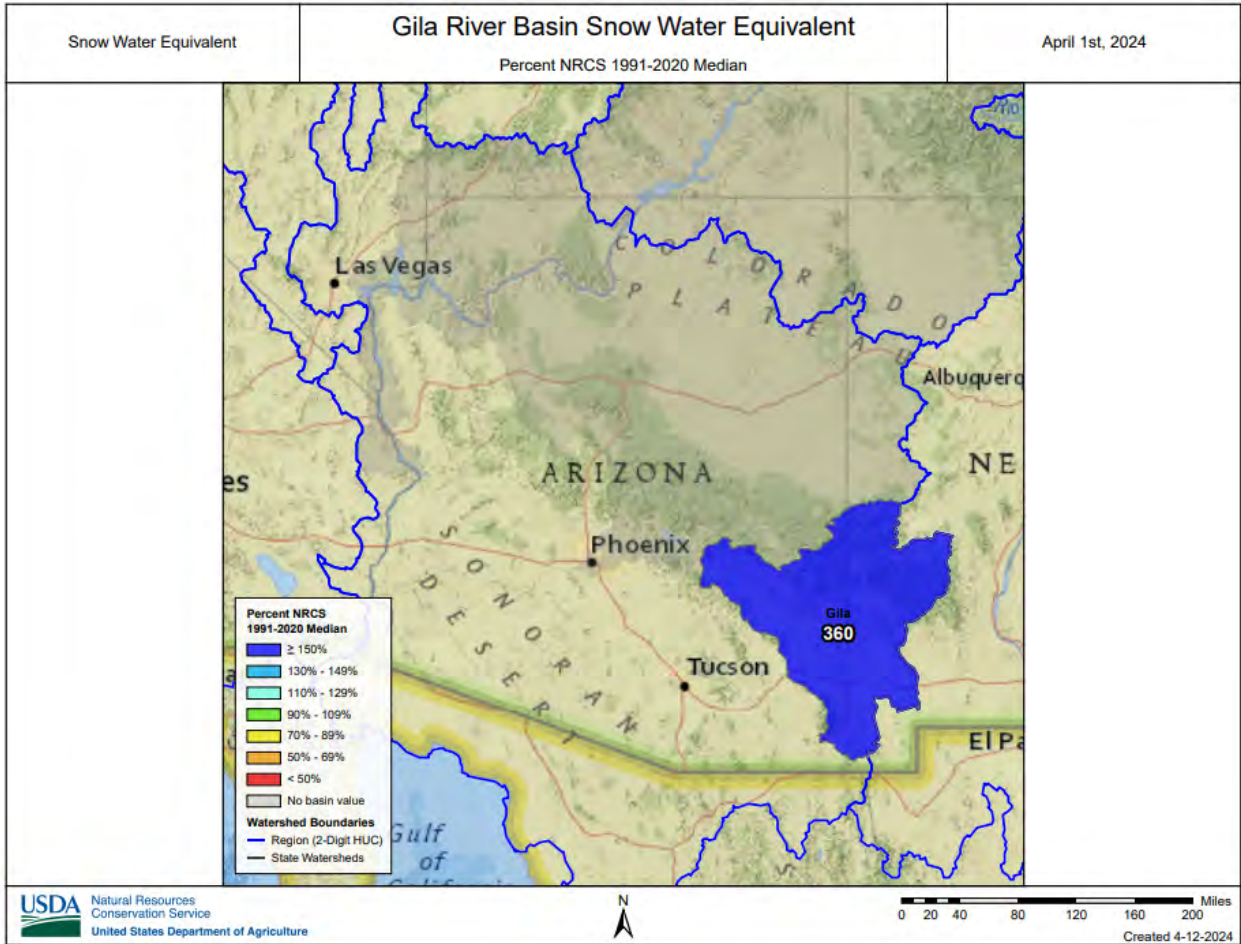
2) Forecasts are For unimpaired flows. Actual flow will be dependent On management of upstream reservoirs And diversions

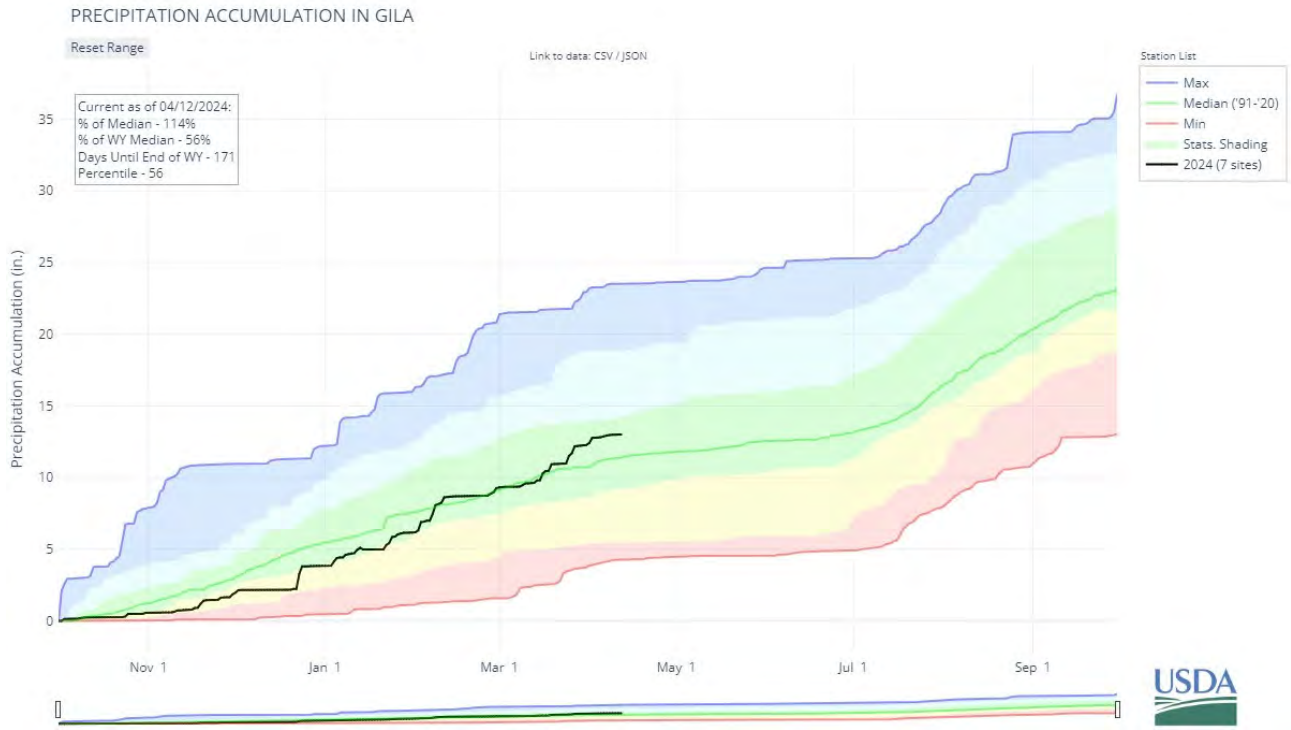
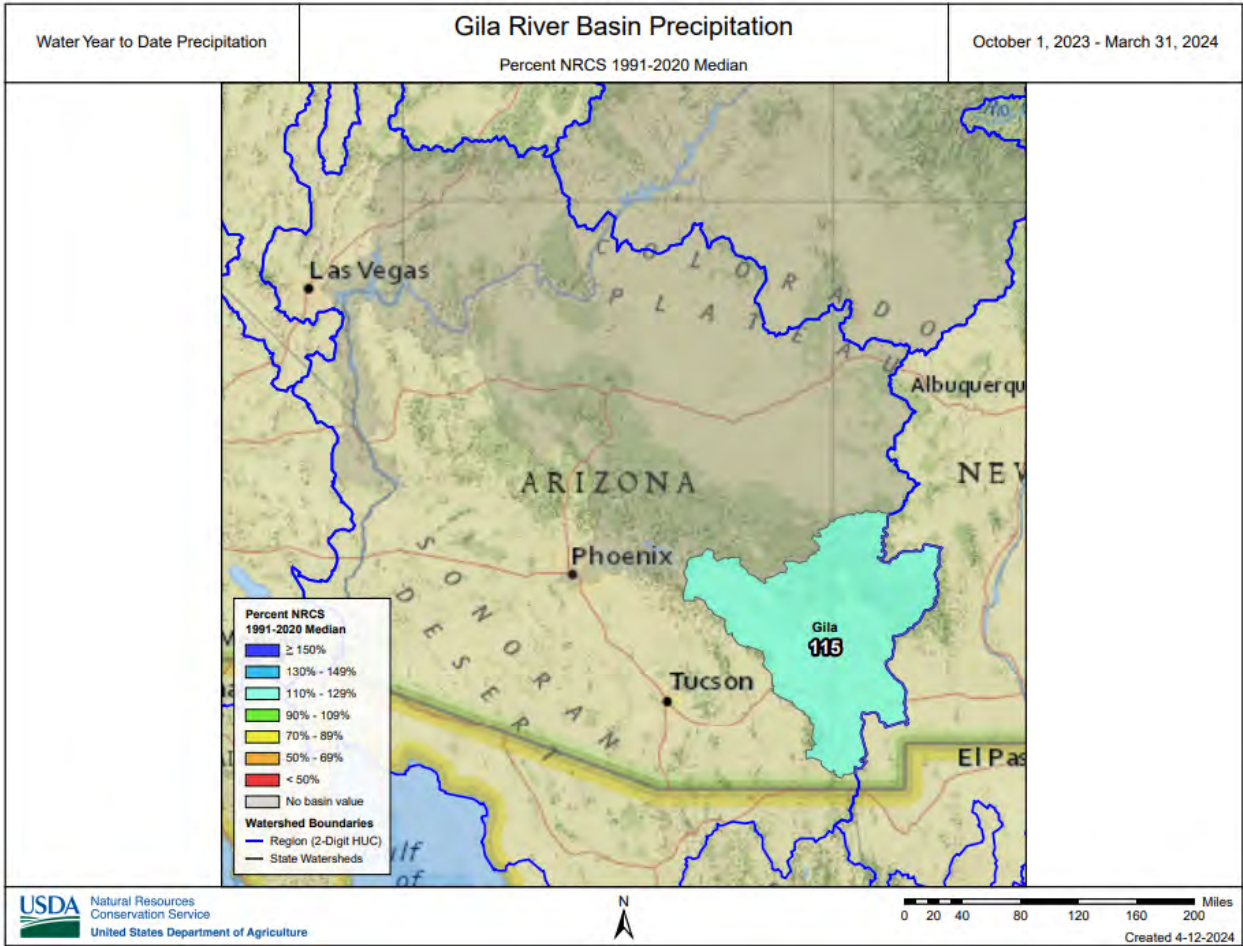
Reservoir Storage End of March, 2024	Current (KAF)	Last Year (KAF)	Median (KAF)	Capacity (KAF)
Verde River Reservoir System		259.8	193.6	287.4

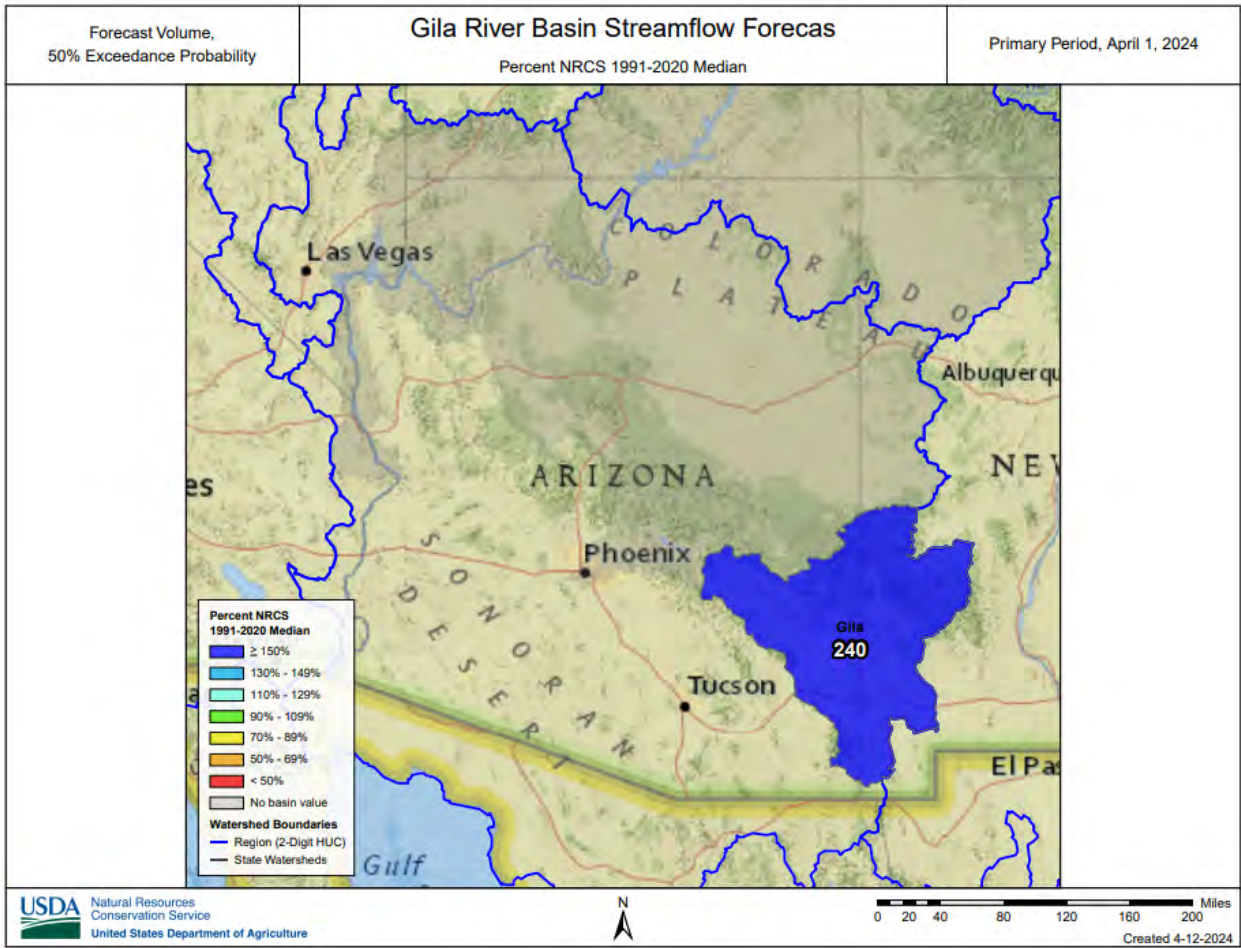
Watershed Snowpack Analysis April 1, 2024	# of Sites	% Median	Last Year % Median
Verde	14	207%	588%
Upper Verde	11	191%	773%

SAN FRANCISCO-UPPER GILA RIVER BASIN as of April 1, 2024

Well above median streamflow levels are forecast for the basin. In the San Francisco River, at Clifton, the forecast calls for 231% of median streamflow levels through May. In the Gila River, near Solomon, the forecast calls for 204% of median streamflow levels through May. At San Carlos Reservoir, inflow to the lake is forecast at 398% of median through May. Snow survey measurements show the snowpack for this basin to be at 360% of median.







Data Current As of: 4/4/2024 8:52:27 AM

Gila Streamflow Forecasts - April 1, 2024

Forecast Exceedance Probabilities For Risk Assessment
Chance that actual volume will exceed forecast

Gila	Forecast Period	90% (KAF)	70% (KAF)	50% (KAF)	% Median	30% (KAF)	10% (KAF)	30yr Median (KAF)
San Francisco R at Glenwood ²	APR-MAY	10.6	15.1	19.2	362%	23	30	5.3
Gila R at Gila ²	APR-MAY	15.8	21	25	184%	30	38	13.6
Gila R nr Solomon ²	APR	21	30	38	200%	48	65	19
	APR-MAY	34	45	55	204%	66	85	27
Gila R bl Blue Ck nr Virden ²	APR-MAY	17.6	25	31	217%	39	50	14.3
San Francisco R at Clifton ²	APR-MAY	17.4	24	28	231%	34	43	12.1
San Carlos Reservoir Inflow ²	APR-MAY	10.7	26	39	398%	56	86	9.8

1) 90% And 10% exceedance probabilities are actually 95% And 5%

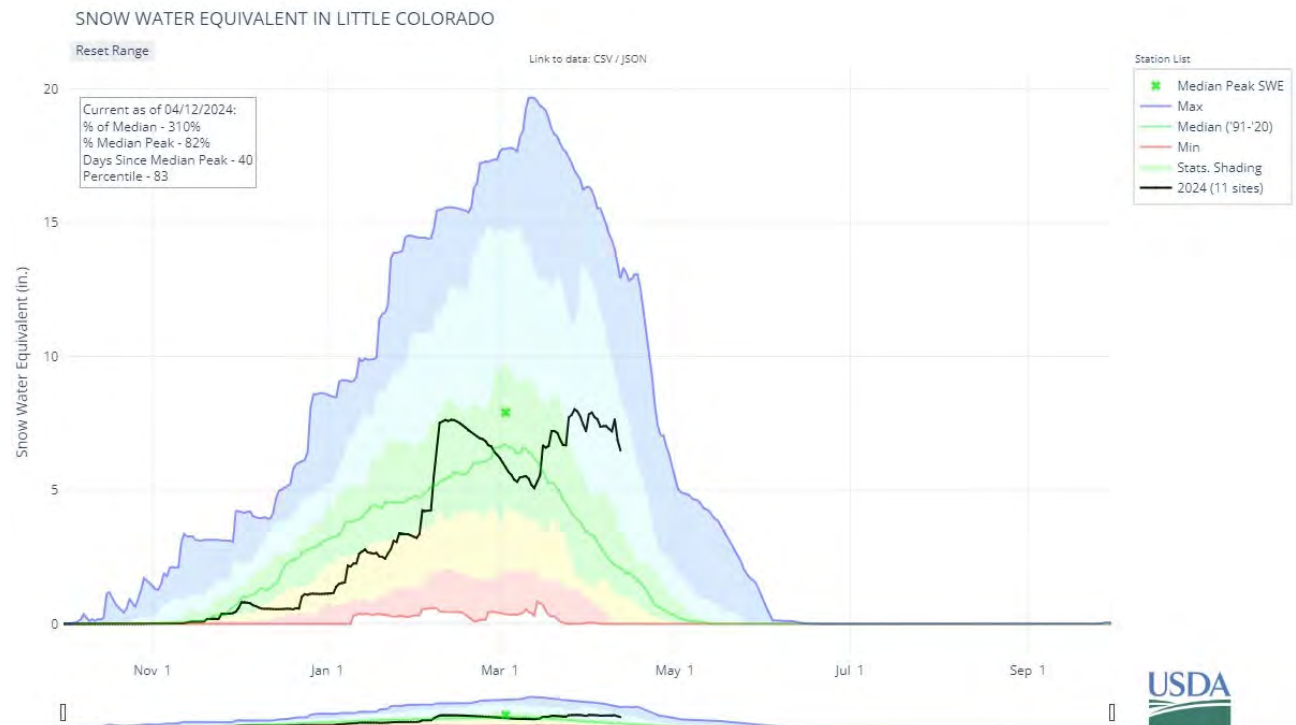
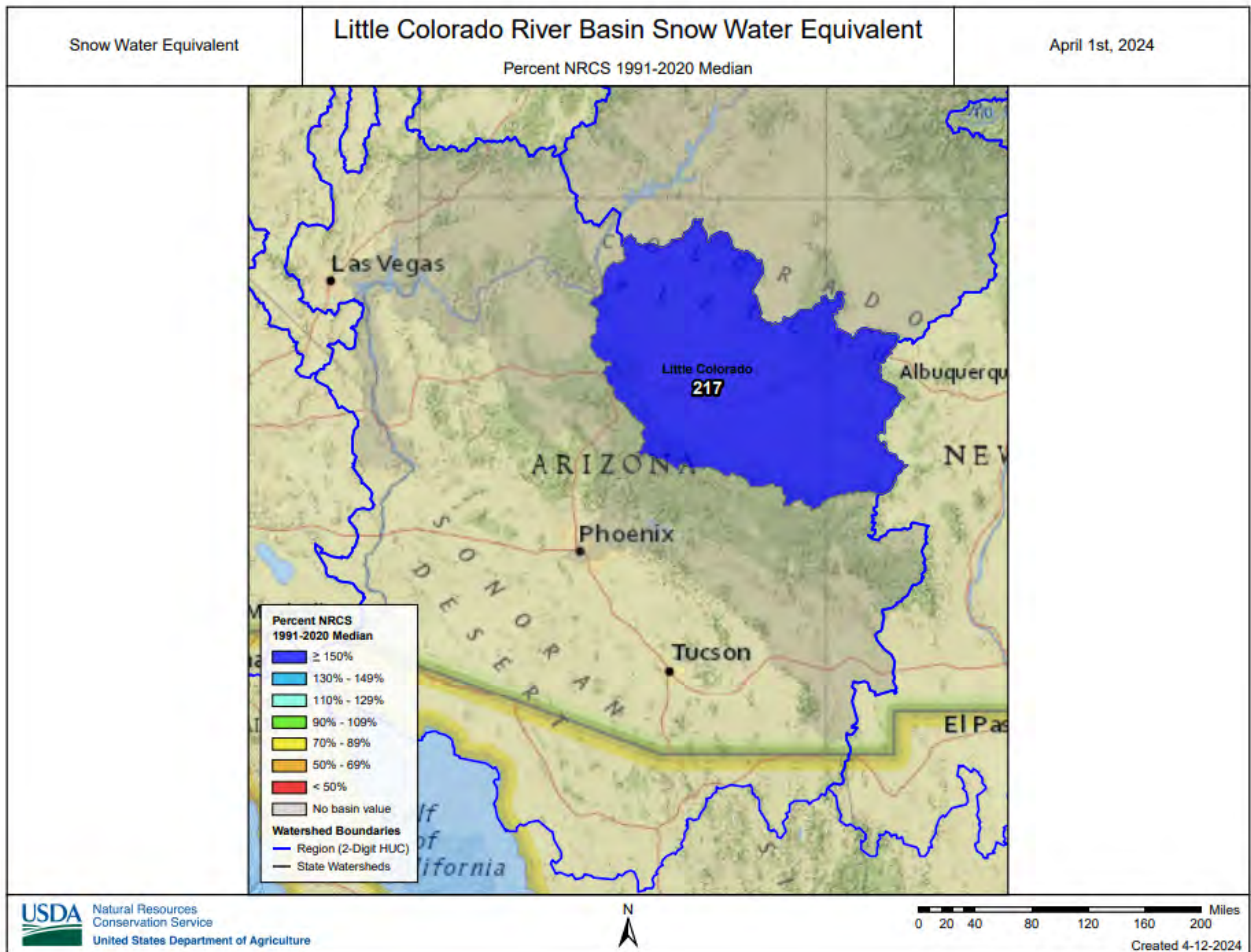
2) Forecasts are For unimpaired flows. Actual flow will be dependent On management of upstream reservoirs And diversions

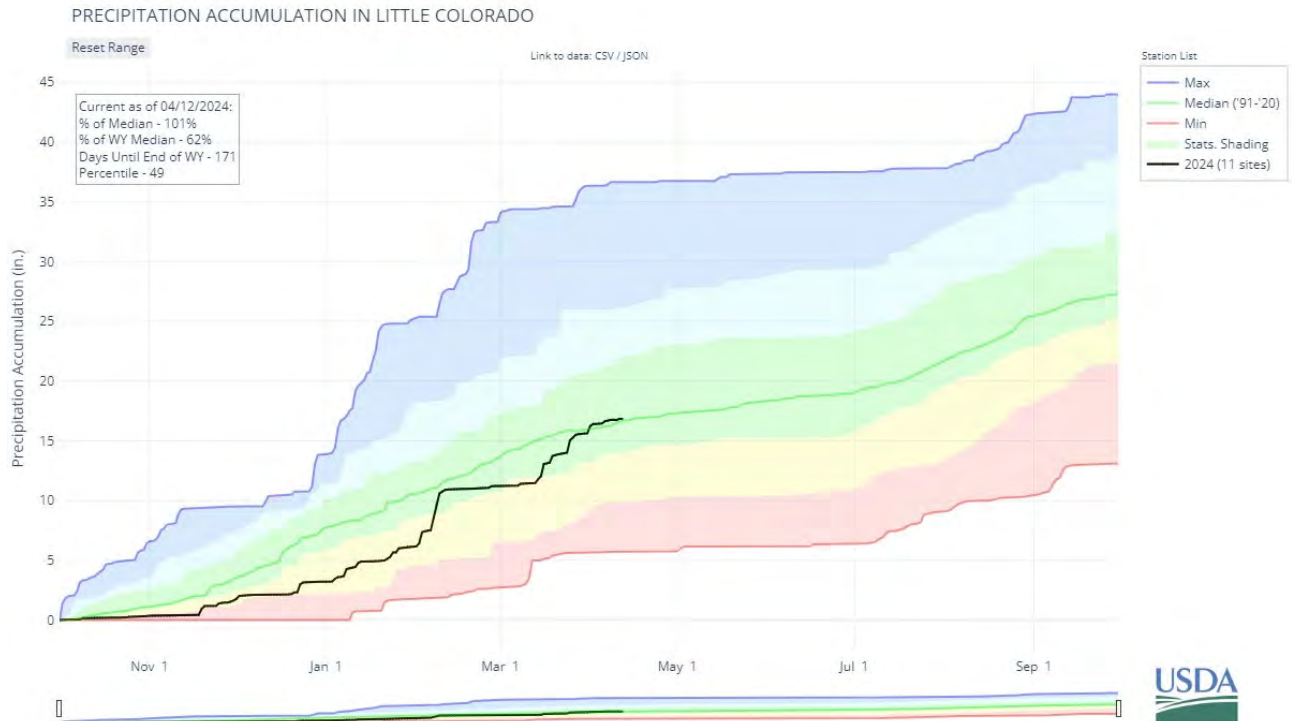
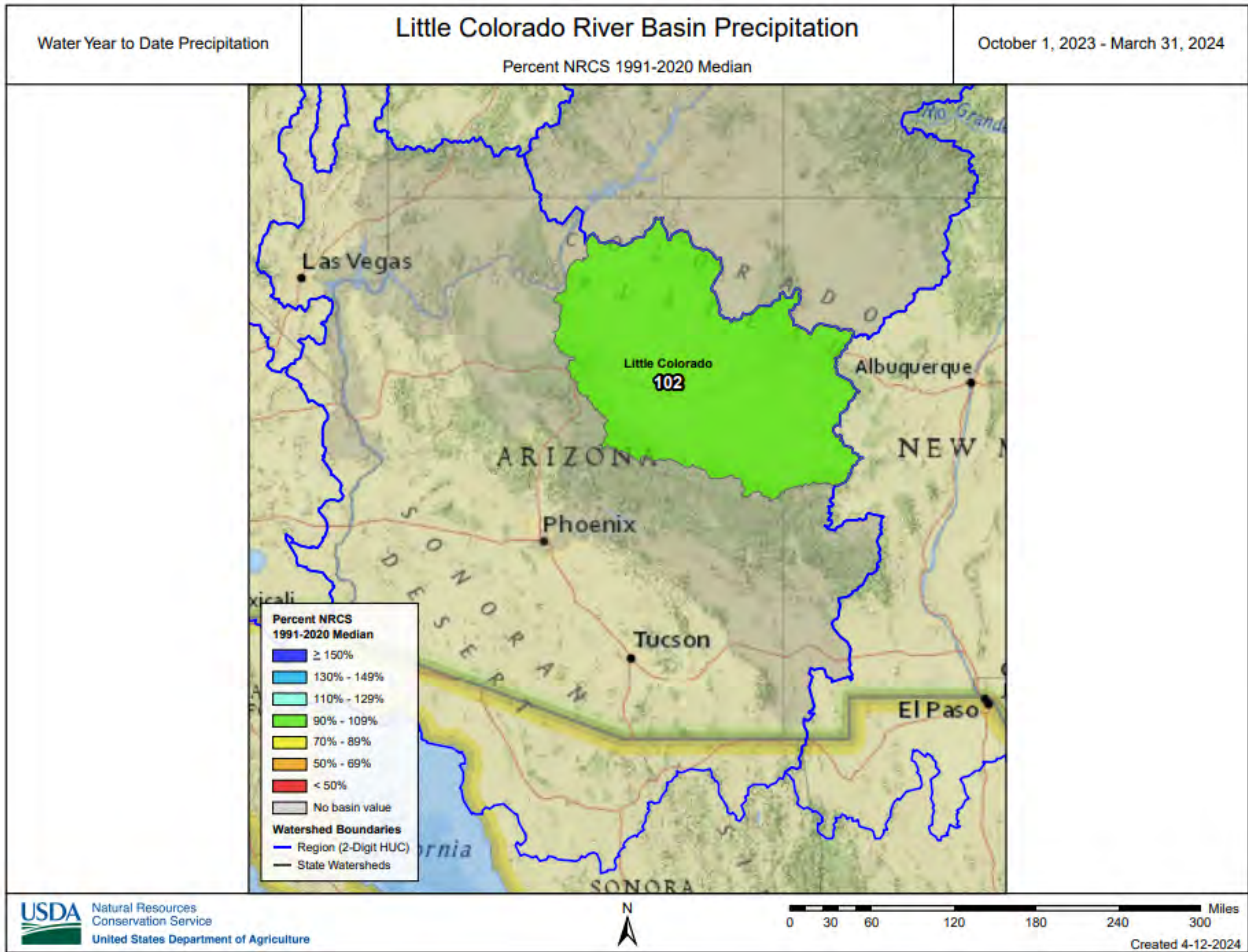
Reservoir Storage End of March, 2024	Current (KAF)	Last Year (KAF)	Median (KAF)	Capacity (KAF)
San Carlos Reservoir	360.2	513.0	200.4	875.0

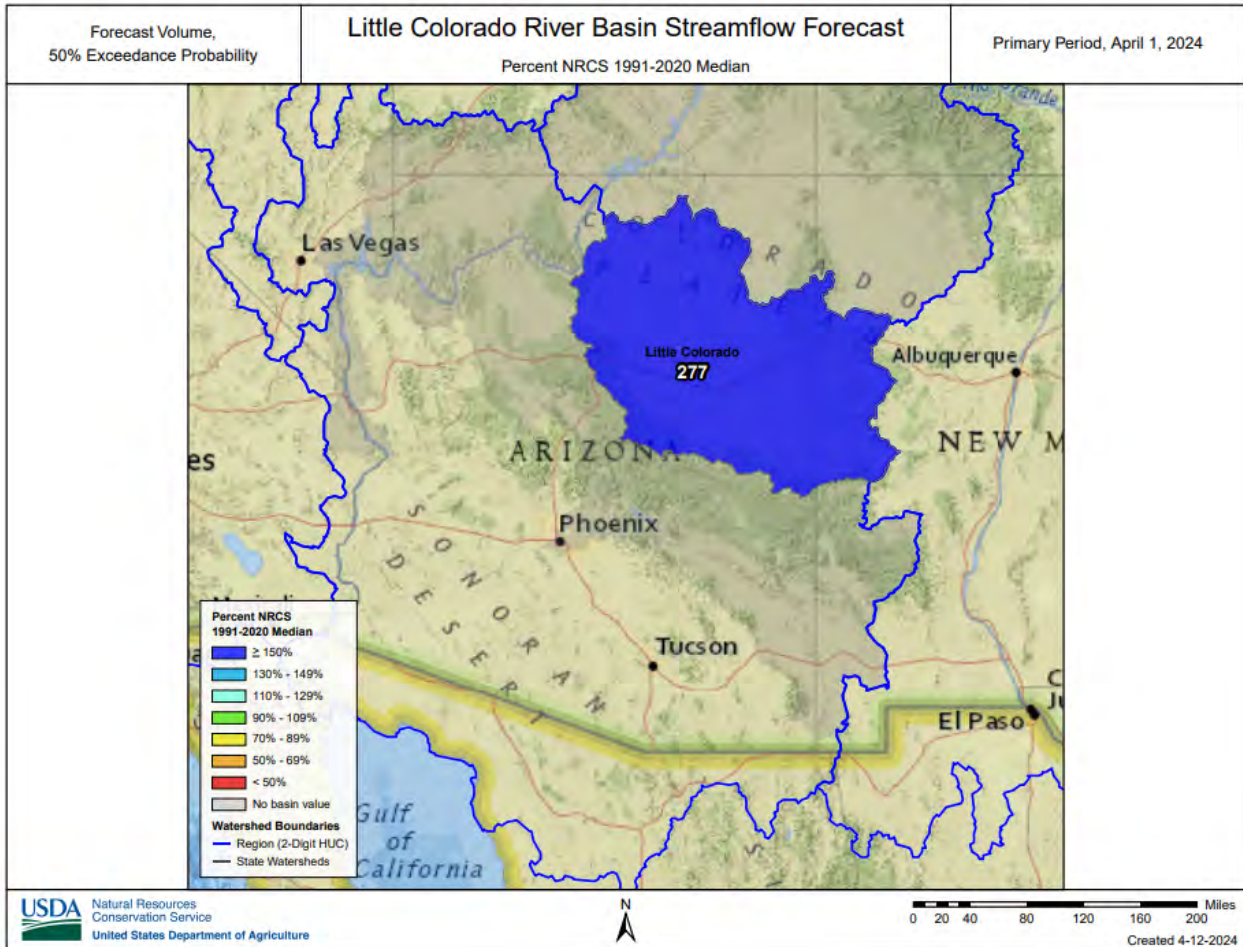
Watershed Snowpack Analysis April 1, 2024	# of Sites	% Median	Last Year % Median
Gila	10	360%	229%
San Francisco	8	360%	229%
Upper Gila	3	279%	160%

LITTLE COLORADO RIVER BASIN as of April 1, 2024

Well above median streamflow levels are forecast for the basin. In the Little Colorado River, above Lyman Lake, the forecast calls for 186% of median streamflow through June. At Blue Ridge (C.C. Cragin) Reservoir, inflow to the lake is forecast at 423% of median through May. Snow survey measurements show the snowpack for this basin to be at 277% of median.







Data Current As of: 4/4/2024 8:52:33 AM

Little Colorado Streamflow Forecasts - April 1, 2024

Forecast Exceedance Probabilities For Risk Assessment
Chance that actual volume will exceed forecast

Little Colorado	Forecast Period	90% (KAF)	70% (KAF)	50% (KAF)	% Median	30% (KAF)	10% (KAF)	30yr Median (KAF)
Zuni R ab Black Rock Reservoir	APR-MAY	0.02	0.14	0.3		0.52	0.96	0
Bowl Canyon Ck ab Asaayi Lake ²	MAR-MAY	1.13	1.61	2	244%	2.6	3.5	0.82
Blue Ridge Reservoir Inflow ²	APR-MAY	4.9	7.7	9.3	423%	11.1	14.3	2.2
Rio Nutria nr Ramah ²	APR-MAY	0.37	0.53	0.67	838%	0.85	1.36	0.08
Lake Mary Reservoir Inflow ²	APR-MAY	0.45	0.6	0.72	111%	0.89	1.17	0.65
Little Colorado R ab Lyman Lake ²	APR-JUN	2	3.7	5.4	186%	7.4	10.7	2.9

1) 90% And 10% exceedance probabilities are actually 95% And 5%

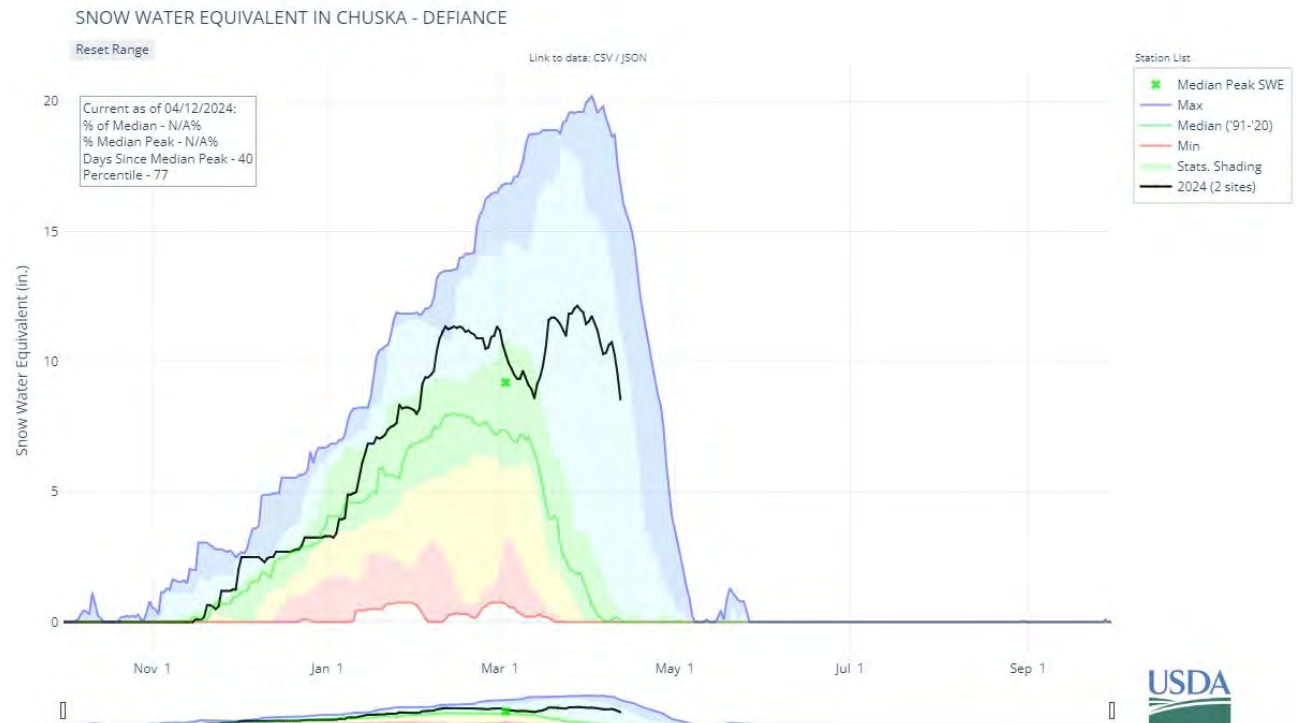
2) Forecasts are For unimpaired flows. Actual flow will be dependent On management of upstream reservoirs And diversions

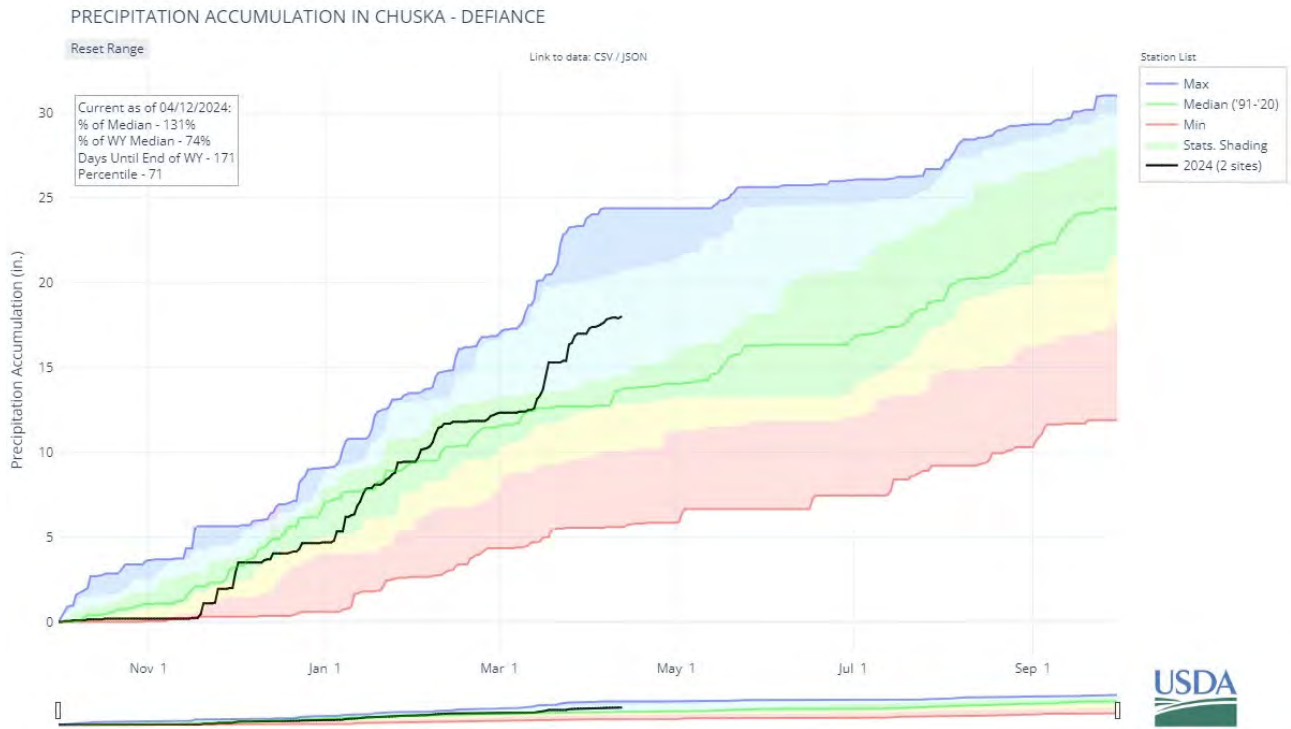
Reservoir Storage End of March, 2024	Current (KAF)	Last Year (KAF)	Median (KAF)	Capacity (KAF)
Lyman Reservoir	12.3	11.9	10.5	30.0
Cragin Dam Reservoir	13.6	15.1	14.4	15.0

Watershed Snowpack Analysis April 1, 2024	# of Sites	% Median	Last Year % Median
Little Colorado	25	217%	442%
Canyon Diablo	7	136%	371%
Chevelon Canyon	2	350%	1341%
Little Colorado Headwaters	6	455%	481%
Zuni	3		

CHUSKA MOUNTAINS as of April 1, 2024

Well above median streamflow levels are forecast for Wheatfields Creek, Captain Tom Wash, and Bowl Canyon Creek. Snow survey measurements conducted by staff of the Navajo Nation Water Management Branch show the Chuska snowpack to be at 290% of median.





Forecast Volume,
50% Exceedance Probability

Chuska Mountains Basin Streamflow Forecast

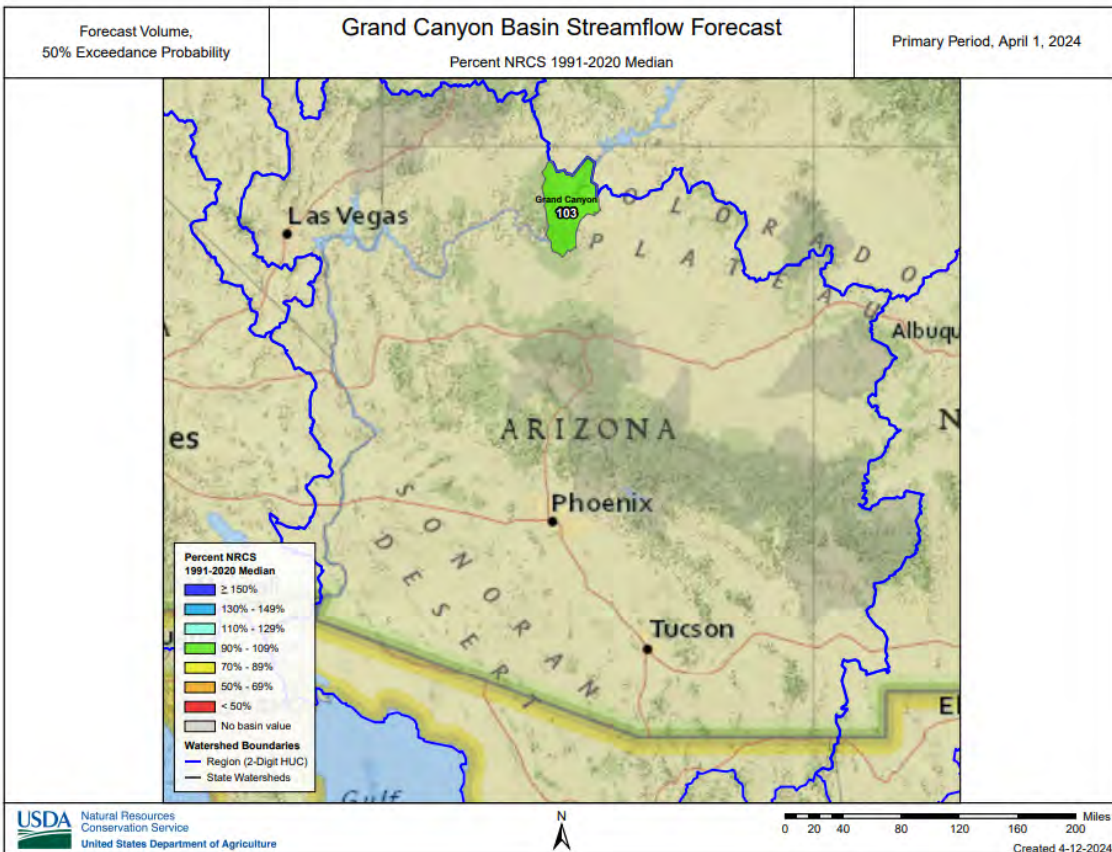
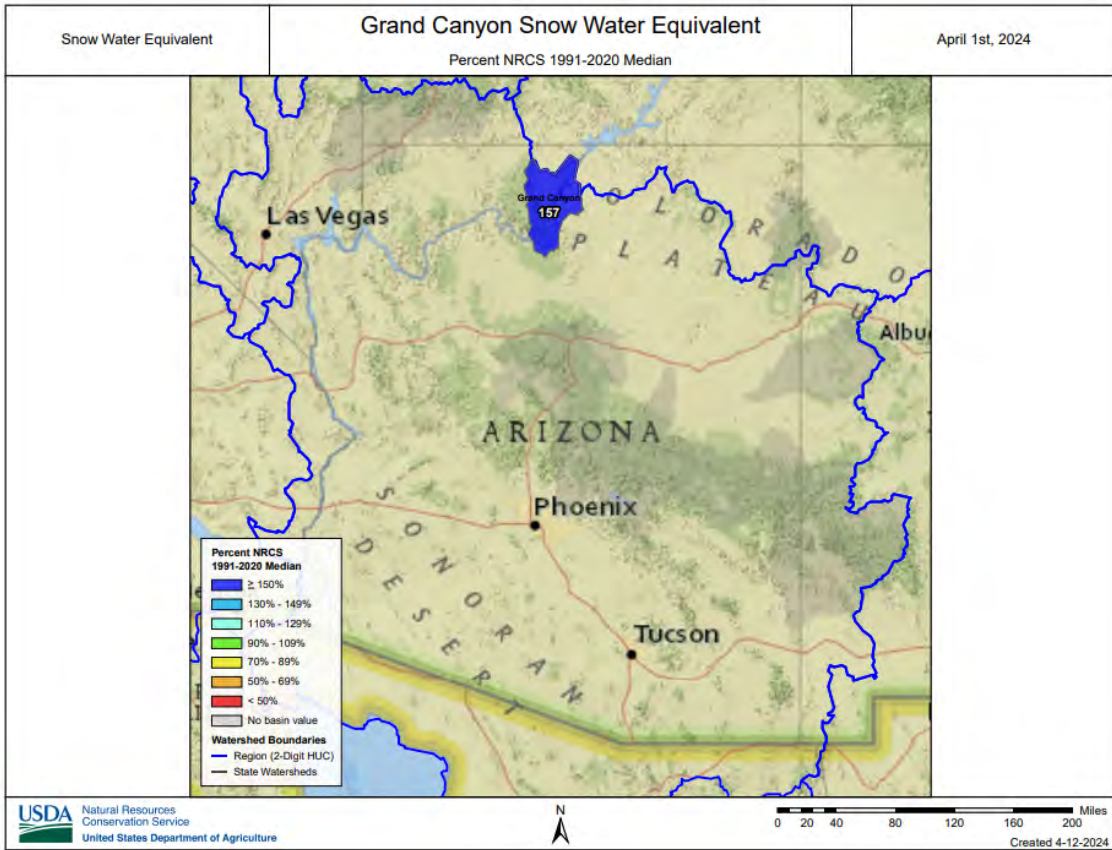
Primary Period, April 1, 2024

Percent NRCS 1991-2020 Median



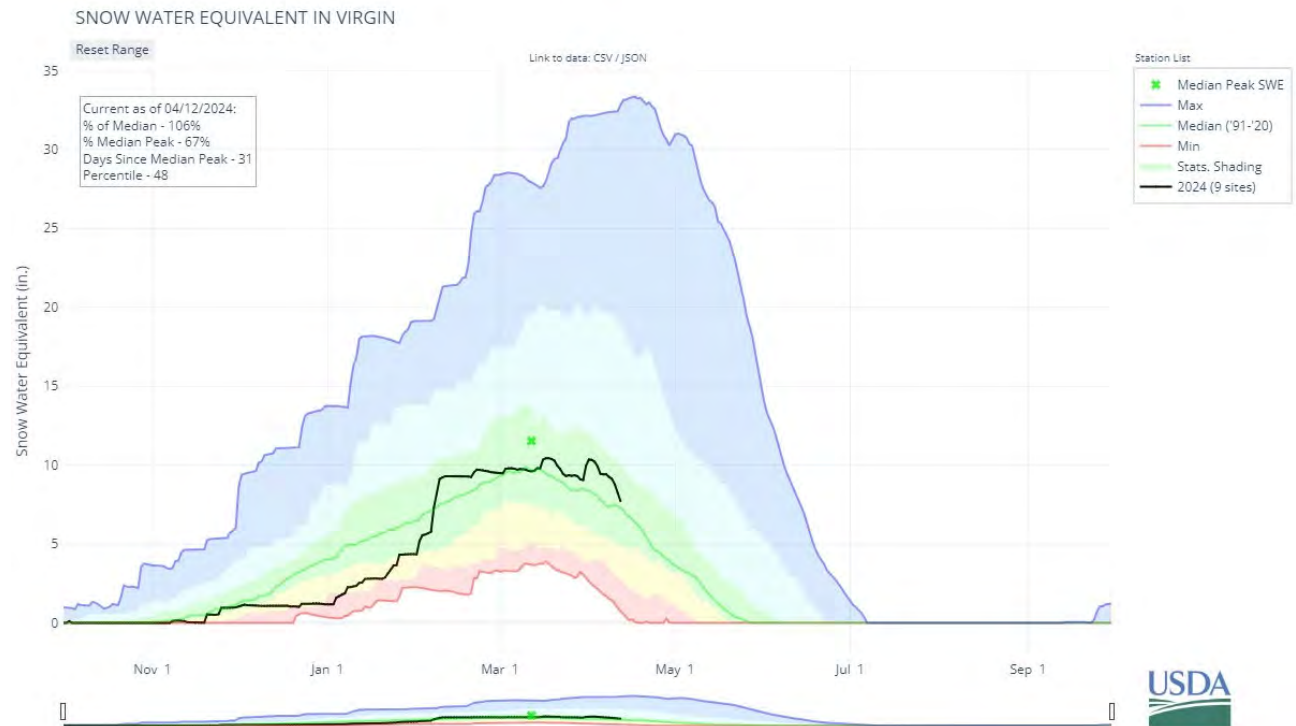
GRAND CANYON as of April 1, 2024

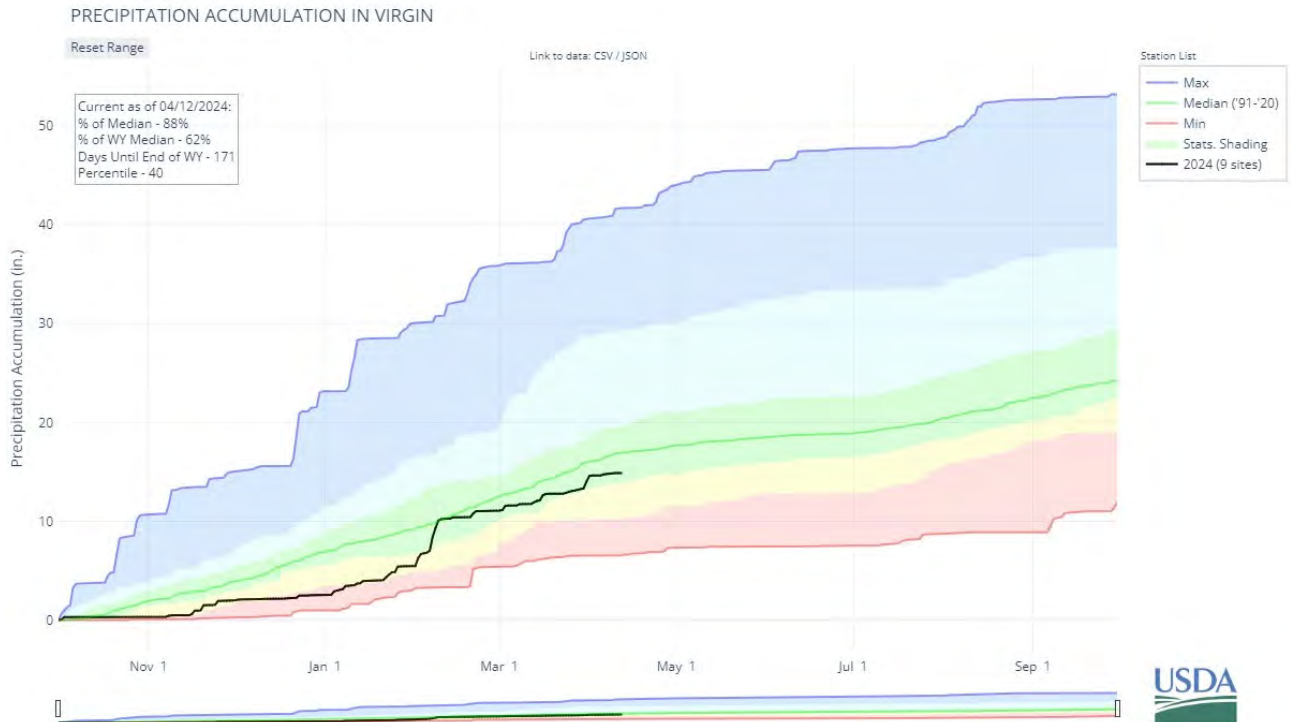
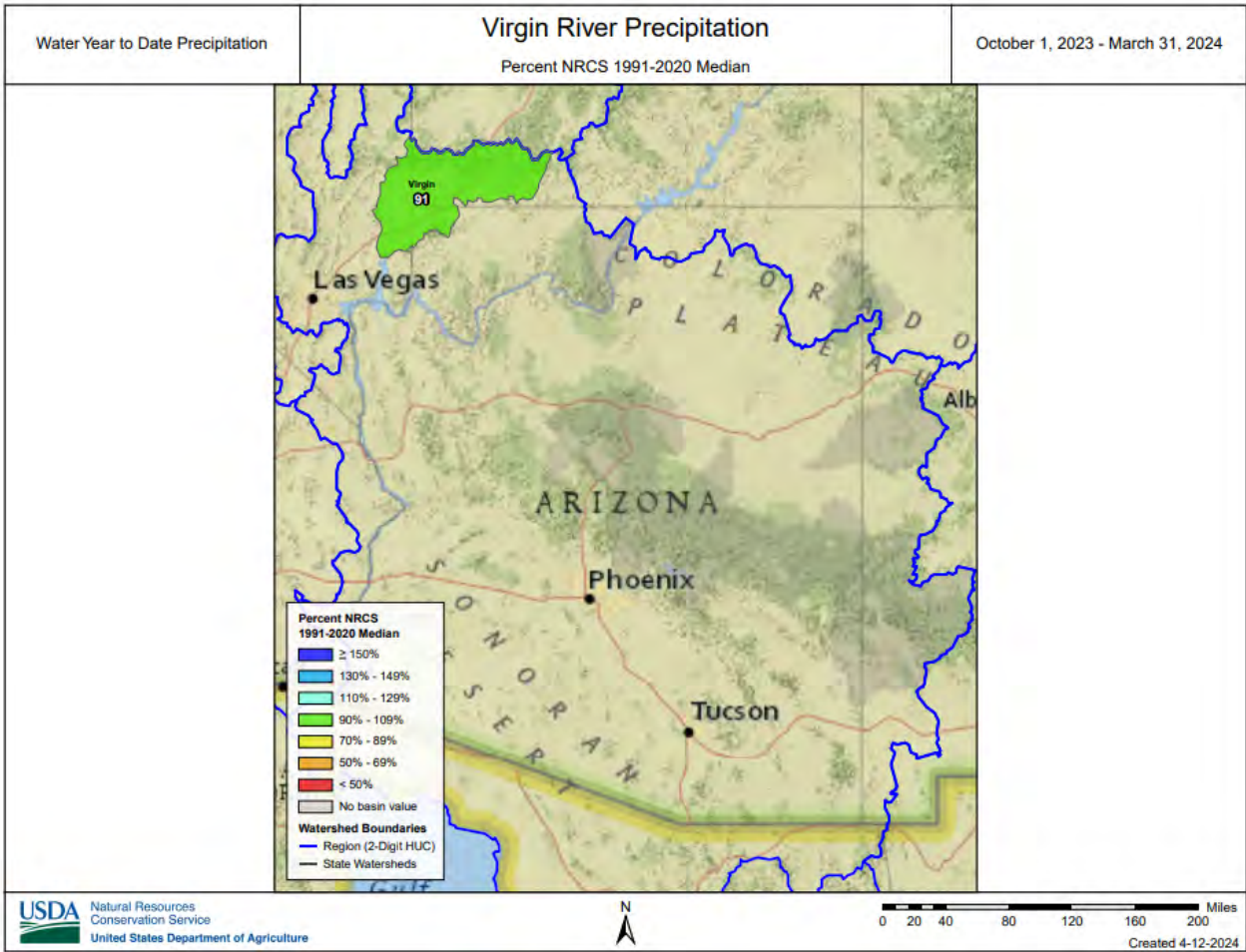
On the Colorado River, median inflow to Lake Powell is forecast at 103% of the 30-year median for the forecast period April-July. At the Grand Canyon, snow survey measurements completed by park rangers show snowpack to be at 157% of median.

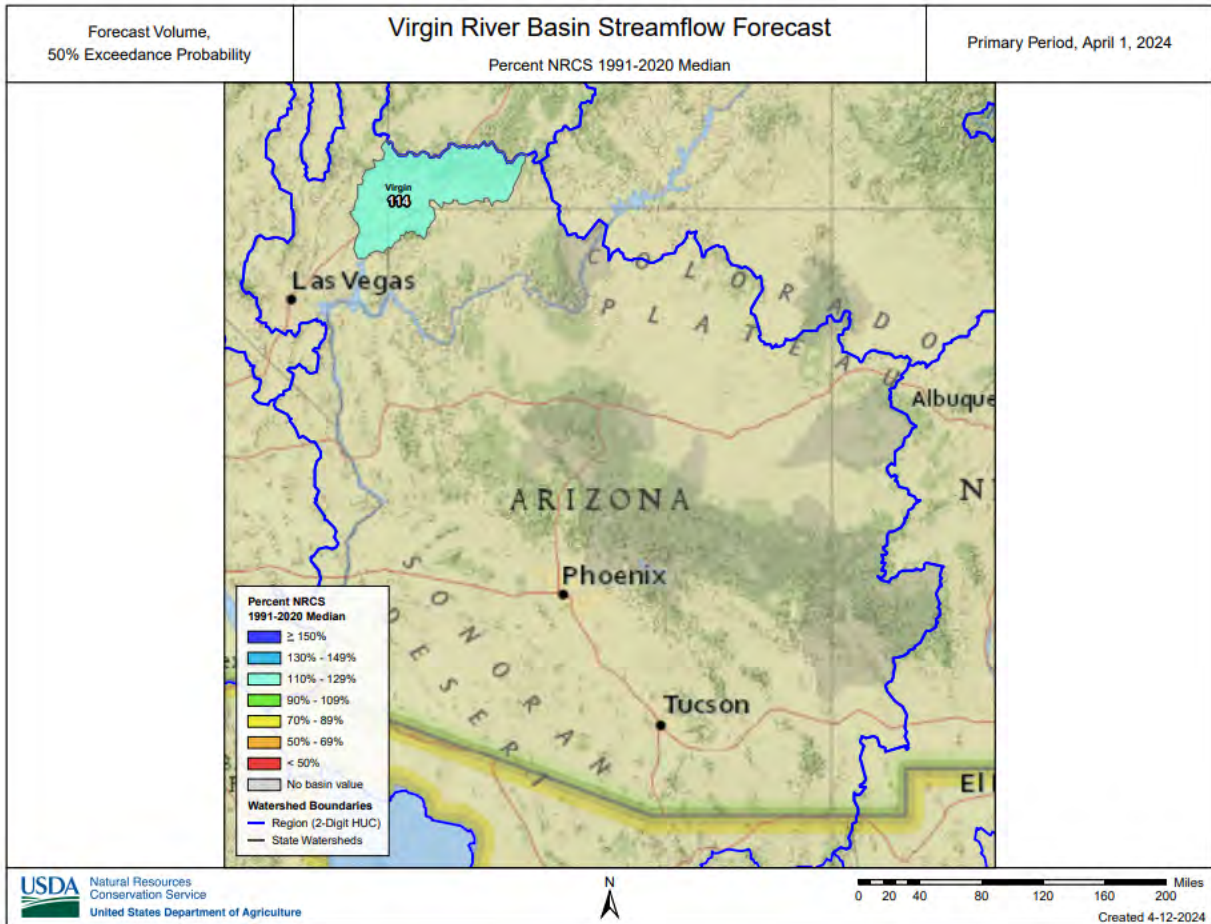


VIRGIN RIVER BASIN as of April 1, 2024

Above median streamflow levels are forecast for the basin, ranging from 109% of median in the Virgin River at Littlefield, to 122% of median in the Virgin River at Virgin. Snow survey measurements show the snowpack for this basin to be at 123% of median.







Data Current As of: 4/4/2024 8:52:35 AM

Lower Colorado Mainstem Streamflow Forecasts - April 1, 2024

Forecast Exceedance Probabilities For Risk Assessment
Chance that actual volume will exceed forecast

Lower Colorado Mainstem	Forecast Period	90% (KAF)	70% (KAF)	50% (KAF)	% Median	30% (KAF)	10% (KAF)	30yr Median (KAF)
Virgin R at Virgin ²	APR-JUL	31	38	44	122%	50	59	36
Virgin R at Littlefield ²	APR-JUL	19	28	36	109%	46	59	33
Virgin R nr Hurricane ²	APR-JUL	17.7	26	34	110%	43	56	31
Lake Powell Inflow ²	APR-JUL	4210	5410	6300	103%	7260	8800	6130
Santa Clara R nr Pine Valley	APR-JUL	1.84	2.6	3.4	106%	4.3	5.8	3.2

1) 90% And 10% exceedance probabilities are actually 95% And 5%

2) Forecasts are For unimpaired flows. Actual flow will be dependent On management of upstream reservoirs And diversions

Reservoir Storage End of March, 2024	Current (KAF)	Last Year (KAF)	Median (KAF)	Capacity (KAF)
Lake Mohave	1682.0	1734.0	1684.0	1810.0
Sand Hollow Reservoir	49.9	45.6		50.0
Gunlock	9.1	9.1	7.5	10.4
Kolob Reservoir	4.9	2.1		5.6
Lake Mead	9629.0	7401.7	15296.0	26159.0
Quail Creek	31.3	29.5	31.5	40.0
Lake Havasu	573.4	587.8	566.1	619.0

Watershed Snowpack Analysis April 1, 2024	# of Sites	% Median	Last Year % Median
Lower Colorado Mainstem	11	124%	356%
Grand Canyon	1		
Virgin	9	123%	339%

Basinwide Summary: April 1, 2024
(Medians based On 1991-2020 reference period)

Snowpack Summary For April 1, 2024

Gila	Network	Elevation (ft)	Depth (in)	SWE (in)	Median (in)	% Median	Last Year SWE (in)	Last Year % Median
Beaver Head	SNOTEL	8076	0	0.0	0.0		0.0	
Coronado Trail	SC	8350	5	1.0	0.0		0.0	
Coronado Trail	SNOTEL	8418	1	0.3	0.0		0.0	
Frisco Divide	SNOTEL	8013	1	0.3	0.0		0.0	
Hannagan Meadows	SNOTEL	9027	30	11.7	3.0	390%	9.8	327%
Lookout Mountain	SNOTEL	8509	0	0.0	0.0		0.0	
Nutriosio	SC	8500	4	0.7	0.0		0.0	
Nutriosio	SNOTEL	8571	1	0.2	0.0		0.0	
Signal Peak	SNOTEL	8405	0	0.0	0.0		0.0	
Silver Creek Divide	SNOTEL	9096	22	11.7	4.2	279%	6.7	160%
State Line	SC	8000			0.0			
Basin Index						360%		229%
# of sites						10		10

San Francisco	Network	Elevation (ft)	Depth (in)	SWE (in)	Median (in)	% Median	Last Year SWE (in)	Last Year % Median
Beaver Head	SNOTEL	8076	0	0.0	0.0		0.0	
Coronado Trail	SC	8350	5	1.0	0.0		0.0	
Coronado Trail	SNOTEL	8418	1	0.3	0.0		0.0	
Frisco Divide	SNOTEL	8013	1	0.3	0.0		0.0	
Hannagan Meadows	SNOTEL	9027	30	11.7	3.0	390%	9.8	327%
Nutriosio	SC	8500	4	0.7	0.0		0.0	
Nutriosio	SNOTEL	8571	1	0.2	0.0		0.0	
Silver Creek Divide	SNOTEL	9096	22	11.7	4.2	279%	6.7	160%
State Line	SC	8000			0.0			
Basin Index						360%		229%
# of sites						8		8

Upper Gila	Network	Elevation (ft)	Depth (in)	SWE (in)	Median (in)	% Median	Last Year SWE (in)	Last Year % Median
Lookout Mountain	SNOTEL	8509	0	0.0	0.0		0.0	
Signal Peak	SNOTEL	8405	0	0.0	0.0		0.0	
Silver Creek Divide	SNOTEL	9096	22	11.7	4.2	279%	6.7	160%
Basin Index						279%		160%
# of sites						3		3

Salt	Network	Elevation (ft)	Depth (in)	SWE (in)	Median (in)	% Median	Last Year SWE (in)	Last Year % Median
Baldy	SNOTEL	9221	22	6.2	0.4	1550%	8.5	2125%
Beaver Head	SNOTEL	8076	0	0.0	0.0		0.0	
Buck Spring	SC	7400			0.0		0.0	
Coronado Trail	SC	8350	5	1.0	0.0		0.0	
Coronado Trail	SNOTEL	8418	1	0.3	0.0		0.0	
Fort Apache	SC	9160	40	13.1	4.5	291%	13.2	293%
Hannagan Meadows	SNOTEL	9027	30	11.7	3.0	390%	9.8	327%
Hawley Lake	SNOTEL	8314	49	17.6			18.8	
Heber	SNOTEL	7654	3	1.0	0.0		10.6	
Maverick Fork	SNOTEL	9220	28	8.2	2.3	357%	11.0	478%
Promontory	SNOTEL	7942	20	6.7	2.2	305%	18.9	859%

Wildcat	SNOTEL	7868	3	0.6	0.0		0.0	
Workman Creek	SNOTEL	7032	2	0.3	0.0		0.0	
Basin Index						396%	581%	
# of sites						11	11	

Central Mogollon Rim	Network	Elevation (ft)	Depth (in)	SWE (in)	Median (in)	% Median	Last Year SWE (in)	Last Year % Median
Baker Butte	SNOTEL	7363	17	5.4	0.0		10.2	
Baker Butte No. 2	SC	7700	40	14.0	6.6	212%	20.5	311%
Baker Butte Smt	SNOTEL	7752	57	20.4	10.8	189%	28.7	266%
Happy Jack	SC	7630	6	0.6	0.0		11.9	
Happy Jack	SNOTEL	7539	21	8.2	0.0		18.5	
Heber	SNOTEL	7654	3	1.0	0.0		10.6	
Promontory	SNOTEL	7942	20	6.7	2.2	305%	18.9	859%
Workman Creek	SNOTEL	7032	2	0.3	0.0		0.0	
Basin Index						289%	609%	
# of sites						8	8	

Upper Salt	Network	Elevation (ft)	Depth (in)	SWE (in)	Median (in)	% Median	Last Year SWE (in)	Last Year % Median
Baldy	SNOTEL	9221	22	6.2	0.4	1550%	8.5	2125%
Beaver Head	SNOTEL	8076	0	0.0	0.0		0.0	
Buck Spring	SC	7400			0.0		0.0	
Coronado Trail	SC	8350	5	1.0	0.0		0.0	
Coronado Trail	SNOTEL	8418	1	0.3	0.0		0.0	
Fort Apache	SC	9160	40	13.1	4.5	291%	13.2	293%
Hannagan Meadows	SNOTEL	9027	30	11.7	3.0	390%	9.8	327%
Hawley Lake	SNOTEL	8314	49	17.6			18.8	
Maverick Fork	SNOTEL	9220	28	8.2	2.3	357%	11.0	478%
Wildcat	SNOTEL	7868	3	0.6	0.0		0.0	
Basin Index						403%	417%	
# of sites						8	8	

Verde	Network	Elevation (ft)	Depth (in)	SWE (in)	Median (in)	% Median	Last Year SWE (in)	Last Year % Median
Baker Butte	SNOTEL	7363	17	5.4	0.0		10.2	
Baker Butte No. 2	SC	7700	40	14.0	6.6	212%	20.5	311%
Baker Butte Smt	SNOTEL	7752	57	20.4	10.8	189%	28.7	266%
Bar M	SNOTEL	6397	4	1.1			0.2	
Chalender	SC	7100			0.0		6.8	
Chalender	SNOTEL	7035	2	0.5	0.0		8.8	
Fort Valley	SNOTEL	7371	2	0.3	0.0		8.5	
Fort Valley	SC	7350	2	0.5	0.0		7.7	
Fry	SNOTEL	7236	10	4.6	0.0		20.1	
Happy Jack	SC	7630	6	0.6	0.0		11.9	
Happy Jack	SNOTEL	7539	21	8.2	0.0		18.5	
Mormon Mountain	SNOTEL	7500	13	4.1	0.0		22.5	
Mormon Mountain Summit #2	SC	8470			8.3			
Mormon Mtn Summit	SNOTEL	8462	38	11.3	6.2	182%	26.3	424%
Newman Park	SC	6750	0	0.0	0.0		6.5	
Snow Bowl #2	SC	11200	37	13.8	17.0	81%	36.8	216%
White Horse Lake	SNOTEL	7203	3	0.3	0.0		11.7	
Williams Ski Run	SC	7720			5.4		16.7	309%
Basin Index						207%	588%	
# of sites						14	14	

Upper Verde	Network	Elevation (ft)	Depth (in)	SWE (in)	Median (in)	% Median	Last Year SWE (in)	Last Year % Median
Bar M	SNOTEL	6397	4	1.1			0.2	
Chalender	SNOTEL	7035	2	0.5	0.0		8.8	
Chalender	SC	7100			0.0		6.8	
Fort Valley	SNOTEL	7371	2	0.3	0.0		8.5	
Fort Valley	SC	7350	2	0.5	0.0		7.7	
Fry	SNOTEL	7236	10	4.6	0.0		20.1	
Happy Jack	SC	7630	6	0.6	0.0		11.9	
Happy Jack	SNOTEL	7539	21	8.2	0.0		18.5	
Mormon Mountain	SNOTEL	7500	13	4.1	0.0		22.5	
Mormon Mountain Summit #2	SC	8470			8.3			
Mormon Mtn Summit	SNOTEL	8462	38	11.3	6.2	182%	26.3	424%
Newman Park	SC	6750	0	0.0	0.0		6.5	
Snow Bowl #2	SC	11200	37	13.8	17.0	81%	36.8	216%
White Horse Lake	SNOTEL	7203	3	0.3	0.0		11.7	
Williams Ski Run	SC	7720			5.4		16.7	309%
Basin Index						191%		773%
# of sites						11		11

Little Colorado	Network	Elevation (ft)	Depth (in)	SWE (in)	Median (in)	% Median	Last Year SWE (in)	Last Year % Median
Baker Butte	SNOTEL	7363	17	5.4	0.0		10.2	
Baker Butte No. 2	SC	7700	40	14.0	6.6	212%	20.5	311%
Baker Butte Smt	SNOTEL	7752	57	20.4	10.8	189%	28.7	266%
Baldy	SNOTEL	9221	22	6.2	0.4	1550%	8.5	2125%
Boon	SC	8140	10	2.4	0.0		7.7	
Bowl Canyon	SC	8980	37	10.4	6.6	158%	18.0	273%
Buck Spring	SC	7400			0.0		0.0	
Cheese Springs	SC	8700	29	9.4	1.1	855%	7.2	655%
Dan Valley	SC	7640	10	2.4	0.0		5.1	
Fluted Rock	SC	7800	15	3.4	0.0		7.7	
Fort Apache	SC	9160	40	13.1	4.5	291%	13.2	293%
Fort Valley	SNOTEL	7371	2	0.3	0.0		8.5	
Fort Valley	SC	7350	2	0.5	0.0		7.7	
Grand Canyon	SC	7500	1	0.2	0.0		4.2	
Heber	SNOTEL	7654	3	1.0	0.0		10.6	
Lake Mary	SC	6930	0	0.0	0.0		6.2	
Maverick Fork	SNOTEL	9220	28	8.2	2.3	357%	11.0	478%
Mcgaffey	SC	8120	4	0.6	0.0		1.8	
Missionary Spring	SC	7940	6	1.0	0.0		6.5	
Mormon Mountain	SNOTEL	7500	13	4.1	0.0		22.5	
Mormon Mountain Summit #2	SC	8470			8.3			
Mormon Mtn Summit	SNOTEL	8462	38	11.3	6.2	182%	26.3	424%
Nutriosio	SNOTEL	8571	1	0.2	0.0		0.0	
Nutriosio	SC	8500	4	0.7	0.0		0.0	
Promontory	SNOTEL	7942	20	6.7	2.2	305%	18.9	859%
Snow Bowl #2	SC	11200	37	13.8	17.0	81%	36.8	216%
Snowslide Canyon	SNOTEL	9744	63	22.4	15.2	147%	34.6	228%
Basin Index						217%		442%
# of sites						25		25

Canyon Diablo	Network	Elevation (ft)	Depth (in)	SWE (in)	Median (in)	% Median	Last Year SWE (in)	Last Year % Median
---------------	---------	-------------------	---------------	-------------	----------------	-------------	-----------------------	-----------------------

Fort Valley	SNOTEL	7371	2	0.3	0.0		8.5	
Fort Valley	SC	7350	2	0.5	0.0		7.7	
Lake Mary	SC	6930	0	0.0	0.0		6.2	
Mormon Mountain	SNOTEL	7500	13	4.1	0.0		22.5	
Mormon Mountain Summit #2	SC	8470			8.3			
Mormon Mtn Summit	SNOTEL	8462	38	11.3	6.2	182%	26.3	424%
Snow Bowl #2	SC	11200	37	13.8	17.0	81%	36.8	216%
Snowslide Canyon	SNOTEL	9744	63	22.4	15.2	147%	34.6	228%

Basin Index **136%** **371%**
of sites 7 7

Chevelon Canyon		Network	Elevation (ft)	Depth (in)	SWE (in)	Median (in)	% Median	Last Year SWE (in)	Last Year % Median
Heber	SNOTEL		7654	3	1.0	0.0		10.6	
Promontory	SNOTEL		7942	20	6.7	2.2	305%	18.9	859%

Basin Index **350%** **1341%**
of sites 2 2

Little Colorado Headwaters		Network	Elevation (ft)	Depth (in)	SWE (in)	Median (in)	% Median	Last Year SWE (in)	Last Year % Median
Baldy	SNOTEL		9221	22	6.2	0.4	1550%	8.5	2125%
Cheese Springs	SC		8700	29	9.4	1.1	855%	7.2	655%
Fort Apache	SC		9160	40	13.1	4.5	291%	13.2	293%
Maverick Fork	SNOTEL		9220	28	8.2	2.3	357%	11.0	478%
Nutriosio	SC		8500	4	0.7	0.0		0.0	
Nutriosio	SNOTEL		8571	1	0.2	0.0		0.0	

Basin Index **455%** **481%**
of sites 6 6

Zuni		Network	Elevation (ft)	Depth (in)	SWE (in)	Median (in)	% Median	Last Year SWE (in)	Last Year % Median
Boon	SC		8140	10	2.4	0.0		7.7	
Dan Valley	SC		7640	10	2.4	0.0		5.1	
Mcgaffey	SC		8120	4	0.6	0.0		1.8	

Basin Index
of sites 3 3

Lower Colorado Mainstem		Network	Elevation (ft)	Depth (in)	SWE (in)	Median (in)	% Median	Last Year SWE (in)	Last Year % Median
Bright Angel	SC		8400	24	6.7	4.4	152%		
Chalender	SNOTEL		7035	2	0.5	0.0		8.8	
Chalender	SC		7100			0.0		6.8	
Gardner Peak	SNOTEL		8322	34	12.2	12.8	95%	22.8	178%
Grand Canyon	SC		7500	1	0.2	0.0		4.2	
Gutz Peak	SNOTEL		6763	18	5.4	2.6	208%	24.8	954%
Harris Flat	SNOTEL		7792	21	8.1	2.6	312%	22.5	865%
Kolob	SNOTEL		9263	67	20.5	21.0	98%	49.2	234%
Little Grassy	SNOTEL		6065	0	0.0	0.0		10.9	
Long Flat	SNOTEL		7982	18	6.3	1.5	420%	20.1	1340%
Long Valley Jct	SNOTEL		7465	2	0.4	0.0		21.7	
Midway Valley	SNOTEL		9827	84	23.2	22.5	103%	49.3	219%
Webster Flat	SNOTEL		9203	51	17.1	12.6	136%	34.9	277%
Williams Ski Run	SC		7720			5.4		16.7	309%

Basin Index **124%** **356%**
of sites 11 11

Grand Canyon	Network	Elevation (ft)	Depth (in)	SWE (in)	Median (in)	% Median	Last Year SWE (in)	Last Year % Median
Bright Angel	SC	8400	24	6.7	4.4	152%		
Grand Canyon	SC	7500	1	0.2	0.0		4.2	

Basin Index

of sites

1

1

Virgin	Network	Elevation (ft)	Depth (in)	SWE (in)	Median (in)	% Median	Last Year SWE (in)	Last Year % Median
Gardner Peak	SNOTEL	8322	34	12.2	12.8	95%	22.8	178%
Gutz Peak	SNOTEL	6763	18	5.4	2.6	208%	24.8	954%
Harris Flat	SNOTEL	7792	21	8.1	2.6	312%	22.5	865%
Kolob	SNOTEL	9263	67	20.5	21.0	98%	49.2	234%
Little Grassy	SNOTEL	6065	0	0.0	0.0		10.9	
Long Flat	SNOTEL	7982	18	6.3	1.5	420%	20.1	1340%
Long Valley Jct	SNOTEL	7465	2	0.4	0.0		21.7	
Midway Valley	SNOTEL	9827	84	23.2	22.5	103%	49.3	219%
Webster Flat	SNOTEL	9203	51	17.1	12.6	136%	34.9	277%

Basin Index

of sites

123%

339%

9

9

Upper Colorado	Network	Elevation (ft)	Depth (in)	SWE (in)	Median (in)	% Median	Last Year SWE (in)	Last Year % Median
Agua Canyon	SNOTEL	8900	30	12.0	2.3	522%	21.4	930%
Arapaho Ridge	SNOTEL	10976	68	21.1	21.0	100%	25.4	121%
Arrow #2	SC	9668					15.5	
Battle Mountain	SNOTEL	7498	35	12.2	11.0	111%	18.7	170%
Bear River	SNOTEL	9112	42	11.6	10.4	112%	12.4	119%
Beartown	SNOTEL	11600	64	21.4	20.6	104%	31.1	151%
Beaver Ck Village	SNOTEL	8565	38	12.9	11.7	110%	14.6	125%
Beaver Spring	SNOTEL	9255	33	12.0	2.0	600%	19.1	955%
Beaver Spring	SC	9220	36	10.7	6.0	178%	21.9	365%
Berthoud Pass	SC	9700	63	20.1	16.6	121%	19.8	119%
Berthoud Summit	SNOTEL	11314	73	21.7	18.2	119%	18.6	102%
Big Park	SC	8620	51	18.9	17.5	108%		
Big Sandy Opening	SNOTEL	9080	62	14.0	13.0	108%	14.8	114%
Bison Lake	SNOTEL	10964	75	22.6	22.6	100%	40.5	179%
Black Flat-U.M. Ck	SNOTEL	9414	37	12.2	8.8	139%	17.3	197%
Black Mesa	SNOTEL	11564	64	18.9			34.9	
Blacks Fork Jct	SNOTEL	8869	35	11.5	8.9	129%	13.4	151%
Blind Bull Sum	SNOTEL	8650	74	23.6	23.5	100%	24.7	105%
Blue River	SC	10500	38	10.7	8.2	130%	7.7	94%
Bowl Canyon	SC	8980	37	10.4	6.6	158%	18.0	273%
Brown Duck	SNOTEL	10574	69	20.2	16.6	122%	25.8	155%
Bryce Canyon	SC	8000	20	7.8	0.5	1560%		
Buck Flat	SNOTEL	9409	52	18.1	15.8	115%	27.3	173%
Buck Pasture	SNOTEL	9632	58	15.9			20.3	
Buckboard Flat	SNOTEL	8924	46	15.6			27.5	
Buckboard Flat	SC	8998			9.3		26.0	280%
Buffalo Park	SNOTEL	9249	48	14.6	14.1	104%	15.5	110%
Burro Mountain	SNOTEL	9317	54	15.7	15.2	103%	21.9	144%
Butte	SNOTEL	10200	51	16.0	13.0	123%	20.8	160%
Butterhill	SC	7880	43	14.1	12.0	118%	19.8	165%
Camp Jackson	SNOTEL	8858	38	14.6	11.1	132%	32.3	291%

Cascade #2	SNOTEL	9012	12	4.9	5.6	88%	20.5	366%
Chapman Tunnel	SNOTEL	10100	54	17.1	14.2	120%	15.8	111%
Chepeta	SNOTEL	10499	59	14.6	12.8	114%	20.1	157%
Clayton Springs	SNOTEL	10049	58	15.5	10.4	149%	21.8	210%
Clear Creek #1	SNOTEL	8975	64	21.8	17.0	128%	33.7	198%
Cochetopa Pass	SC	10000	24	6.5	5.7	114%	4.9	86%
Cochetopa Pass	SNOTEL	10061	22	6.0	4.1	146%	5.7	139%
Columbine	SNOTEL	9167	65	27.0	22.0	123%	30.4	138%
Columbine Lodge	SC	9160	59	20.6	17.9	115%	25.4	142%
Columbine Pass	SNOTEL	9171	52	20.4	16.1	127%	45.0	280%
Columbus Basin	SNOTEL	10781	78	23.0	23.5	98%	36.4	155%
Copper Mountain	SNOTEL	10523	47	14.2	14.3	99%	14.7	103%
Corral	SNOTEL	8207	28	10.0			20.8	
Corral Creek	SC	9700	33	10.2	12.8	80%		
Cottonwood Pass	SNOLITE	11681	80					
Crested Butte	SC	8920	46	14.4	13.8	104%	21.5	156%
Crosho	SNOTEL	8973	45	14.1	11.2	126%	16.7	149%
Currant Creek	SNOTEL	7915	33	12.4	6.7	185%	23.5	351%
Daniels-Strawberry	SNOTEL	8008	47	19.8	12.9	153%	29.1	226%
Dills Camp	SNOTEL	9228	42	13.4	11.1	121%	22.3	201%
Divide Peak	SNOTEL	8730	66	21.6	19.4	111%	28.8	148%
Donkey Reservoir	SNOTEL	9799	42	11.4	7.4	154%	12.0	162%
Dry Lake	SNOTEL	8271	66	25.9	20.0	130%	32.8	164%
EF Blacks Fork GS	SNOTEL	9360	39	11.8	11.3	104%	13.9	123%
East Rim Divide	SNOTEL	7930	33	9.3	10.4	89%	12.2	117%
East Willow Creek	SNOTEL	8302	33	10.3	6.6	156%	22.3	338%
El Diente Peak	SNOTEL	10217	48	15.1	13.2	114%	25.8	195%
Elk River	SNOTEL	8739	56	19.7	17.8	111%	29.1	163%
Elkhart Park G.S.	SNOTEL	9400	47	11.4	12.2	93%	11.9	98%
Elkhead Divide	SNOTEL	8800	62	23.2			32.5	
Elliot Ridge	SNOTEL	10549	68	23.5	18.6	126%	26.4	142%
Fish Lake	SC	8818	27	7.5	7.0	107%	8.0	114%
Fish Lake Utah	SNOTEL	8798	32	11.0	7.2	153%	15.8	219%
Five Points Lake	SNOTEL	10943	68	18.2	15.8	115%	25.7	163%
Fluted Rock	SC	7800	15	3.4	0.0		7.7	
Fool Creek	SNOTEL	11156	61	20.6			18.4	
Fremont Pass	SNOTEL	11326	61	15.9	15.7	101%	14.6	93%
G.B.R.C. Meadows	SC	9780	83	24.7	19.8	125%		
GBRC Meadows	SNOTEL	9858	82	27.1			35.6	
Gold Basin	SNOTEL	10076	66	19.3			33.7	
Gore Pass	SC	9400	42	13.0	10.0	130%	17.3	173%
Granby	SC	8600	32	9.5	8.2	116%	13.6	166%
Grizzly Peak	SNOTEL	11139	53	16.6	16.4	101%	16.7	102%
Gros Ventre Summit	SNOTEL	8750	50	11.9	12.8	93%	12.1	95%
Groundhog	SC	8940			8.2		20.7	252%
Gunsight Pass	SNOTEL	9820	54	13.2	12.6	105%	13.7	109%
Hagerman Tunnel	SC	11150	75	20.3	21.2	96%	22.2	105%
Hams Fork	SNOTEL	7840	24	7.7	10.9	71%	15.5	142%
Haskins Creek	SC	8975	88	29.3	27.2	108%	40.6	149%
Henrys Fork	SNOLITE	10182	48					
Hewinta	SNOTEL	9500	42	12.9	9.8	132%	13.1	134%
Hickerson Park	SNOTEL	9122	43	11.5	7.6	151%	10.7	141%
Hidden Valley	SC	8480	34	10.2	3.2	319%	17.6	550%
High Lonesome	SNOTEL	10638	63	21.8			21.1	
Hole-in-Rock	SNOTEL	9168	37	9.4	7.0	134%	9.6	137%
Huntington Horse	SNOTEL	9652	72	23.1			39.2	

Huntington-Horseshoe	SC	9657	69	21.5	18.6	116%	33.5	180%
Idarado	SNOTEL	9812	40	11.3	13.6	83%	18.9	139%
Independence Pass	SC	10600			13.2		14.6	111%
Independence Pass	SNOTEL	10598	60	16.6	15.8	105%	17.0	108%
Indian Creek	SNOTEL	9425	76	23.7	23.3	102%	27.4	118%
Ironton Park	SC	9600	47	12.2	12.8	95%	18.6	145%
Ivanhoe	SNOTEL	10541	62	18.6	13.4	139%	17.6	131%
Jones Pass	SNOTEL	10426	48	15.8	13.9	114%	15.0	108%
Jones Pass	SC	10400	52	17.4	16.2	107%	16.5	102%
Kelley R.S.	SNOTEL	8180	60	17.2	14.6	118%	20.5	140%
Kendall R.S.	SNOTEL	7740	31	9.5	11.4	83%	12.7	111%
Keystone	SC	9960	46	14.1	15.3	92%	24.6	161%
Kiln	SNOTEL	9624	43	14.3	11.7	122%	14.2	121%
Kings Cabin	SNOTEL	8728	38	11.5	9.2	125%	23.2	252%
Lake City	SC	10160	32	7.7	6.9	112%	6.6	96%
Lake Irene	SC	10700	52	14.8	17.2	86%	20.7	120%
Lake Irene	SNOTEL	10682	74	21.6	23.3	93%	26.4	113%
Lakefork #1	SNOTEL	10128	51	13.7	12.1	113%	18.0	149%
Lakefork #3	SNOTEL	8464	30	8.9	5.6	159%	16.4	293%
Lakefork Basin	SNOTEL	10885	76	21.3	19.0	112%	29.5	155%
Lapland	SC	9300			7.8		11.0	141%
Larsen Creek	SC	9020	37	9.8	11.6	84%		
Larsen Creek	SNOTEL	9000	37	9.8	10.0	98%	11.8	118%
Lasal Mountain	SNOTEL	9578	46	15.1	11.1	136%	25.0	225%
Lasal Mountain-Lower	SC	8825	34	9.8	8.2	120%	21.2	259%
Lasal Mountain-Lower	SNOTEL	8783	29	11.3			19.2	
Lemon Reservoir	SC	8700	22	7.4	4.7	157%	17.6	374%
Little Snake River	SNOTEL	8928	85	29.6	25.5	116%	39.6	155%
Lizard Head Pass	SNOTEL	10193	48	16.2	15.0	108%	22.9	153%
Lone Cone	SNOTEL	9755	46	16.0	14.6	110%	28.2	193%
Lonesome Beaver	SNOTEL	9410	26	8.9			15.8	
Loomis Park	SNOTEL	8240	44	12.6	15.3	82%	16.2	106%
Lost Dog	SNOTEL	9327	72	24.5	22.4	109%	33.5	150%
Lostman	SC	10626			16.0		16.8	105%
Lynx Pass	SNOTEL	8919	30	10.9	10.8	101%	13.8	128%
Mammoth-Cottonwood	SNOTEL	8709	69	22.6	17.6	128%	36.5	207%
Mancos	SNOTEL	10044	42	15.2	14.7	103%	24.2	165%
Mc Clure Pass	SNOTEL	8774	44	14.9	16.0	93%	28.4	178%
Mc Kenzie Gulch	SC	8500	28	8.0	5.9	136%	9.9	168%
Mccoy Park	SNOTEL	9516	58	17.0	14.1	121%	18.9	134%
Mesa Lakes	SC	10000	61	18.5	17.8	104%		
Mesa Lakes	SNOTEL	10168	58	16.1	16.6	97%	23.4	141%
Middle Fork Camp	SNOTEL	8969	40	12.5	10.8	116%	13.0	120%
Middle Fork Campground	SC	9000	39	11.6	9.9	117%	11.0	111%
Milner Pass	SC	9750	41	11.0	10.8	102%	17.2	159%
Mineral Creek	SNOTEL	10046	42	12.9	14.8	87%	18.6	126%
Missionary Spring	SC	7940	6	1.0	0.0		6.5	
Molas Lake	SNOTEL	10631	46	14.7	18.1	81%	27.7	153%
Monarch Offshoot	SC	10500	69	18.4	12.4	148%	17.9	144%
Mosby Mtn.	SNOTEL	9553	49	13.1	10.5	125%	22.5	214%
Mt Baldy	SNOTEL	9524	76	26.4			39.4	
Mt Pennell	SNOTEL	9209	34	12.4			19.7	
Nast Lake	SC	8700	27	7.3	5.6	130%	8.6	154%
Nast Lake	SNOTEL	8731	30	11.8	7.6	155%	12.5	164%
Navajo Whiskey Ck	SNOTEL	9064	30	11.1	0.0		21.1	
New Fork Lake	SNOTEL	8340	31	9.0	10.3	87%	11.2	109%

North Inlet Grand Lake	SC	9000				7.0		10.2	146%
North Lost Trail	SNOTEL	9219	51	18.3	16.8	109%		29.0	173%
Old Battle	SNOTEL	9860	108	32.5	29.7	109%		41.3	139%
Overland Res.	SNOTEL	9893	38	10.8	11.2	96%		23.2	207%
Park Cone	SNOTEL	9621	43	12.4	9.6	129%		14.6	152%
Park Cone	SC	9600	43	10.5	9.0	117%		13.8	153%
Park Reservoir	SNOTEL	9987	65	20.8	23.7	88%		46.0	194%
Phantom Valley	SNOTEL	9045	30	9.5	9.6	99%		12.8	133%
Pocket Creek	SC	9350				12.0		16.0	133%
Pocket Creek	SNOTEL	9360						15.1	
Porphyry Creek	SC	10760	67	18.1	15.6	116%		18.4	118%
Porphyry Creek	SNOTEL	10788	66	20.4	15.4	132%		20.1	131%
Rabbit Ears	SNOTEL	9411	77	28.2	24.9	113%		30.7	123%
Ranch Creek	SC	9400	48	16.3	10.3	158%		14.6	142%
Red Mountain Pass	SNOTEL	11080	66	20.6	22.3	92%		30.0	135%
Red Pine Ridge	SNOTEL	8988	54	17.0	13.6	125%		22.6	166%
Rio Blanco	SC	8500	44	14.3	12.3	116%		19.2	156%
Ripple Creek	SNOTEL	10350	88	26.5	25.7	103%		36.0	140%
Rock Creek	SNOTEL	7886	32	9.5	6.9	138%		13.9	201%
Rowdy Creek	SC	8300	50	16.0	18.0	89%		21.7	121%
Sage Creek Basin	SNOTEL	7850	49	16.0	13.2	121%		25.8	195%
Sandstone RS	SNOTEL	8152	51	18.9	12.6	150%		25.9	206%
Sargents Mesa	SNOTEL	11499	40	11.3	10.5	108%		12.0	114%
Schofield Pass	SNOTEL	10653	91	31.7	29.6	107%		47.5	160%
Scotch Creek	SNOTEL	9195	40	13.6	9.8	139%		22.2	227%
Seeley Creek	SNOTEL	9904	60	17.0	11.8	144%		22.5	191%
Sharkstooth	SNOTEL	10747	56	18.9	18.8	101%		36.0	191%
Shrine Pass	SC	10700	59	15.7	16.2	97%		20.1	124%
Slumgullion	SNOTEL	11560	42	12.4	13.6	91%		13.9	102%
Snake River	SC	10000	27	7.8	6.7	116%		8.2	122%
Snider Basin	SNOTEL	8060	35	10.3	12.4	83%		14.6	118%
Spirit Lk	SNOTEL	10235	61	15.8	12.7	124%		20.2	159%
Spring Creek Divide	SNOTEL	9000	78	23.1	24.2	95%		26.9	111%
Spud Mountain	SNOTEL	10674	64	20.4	22.6	90%		41.1	182%
Steel Creek Park	SNOTEL	10158	53	15.7	13.8	114%		19.4	141%
Stillwater Creek	SNOTEL	8880	20	7.3				10.8	
Strawberry Divide	SNOTEL	8123	57	21.9	14.2	154%		23.6	166%
Stump Lakes	SNOTEL	11248	69	20.0	16.2	123%		29.0	179%
Summit Ranch	SNOTEL	9371	37	11.8	10.9	108%		13.4	123%
Sunflower Flat	SNOTEL	10018	49	15.1				25.4	
Telluride	SC	8800	32	8.2	7.5	109%		10.7	143%
Tennessee Pass #2	SC	10280	49	12.6	11.2	113%		10.8	96%
Timberline	SNOTEL	8736	30	11.5	6.4	180%		25.5	398%
Tower	SNOTEL	10620	116	40.3	42.0	96%		51.9	124%
Trapper Lake	SNOTEL	9759	34	10.7				8.6	
Trial Lake	SNOTEL	9992	90	27.9	21.5	130%		35.5	165%
Trial Lake	SC	9953			20.4			35.9	176%
Triple Peak	SNOTEL	8500	68	23.4	22.4	104%		24.1	108%
Trout Creek	SNOTEL	9518	43	10.5	9.8	107%		18.8	192%
Trout Lake #2	SC	9780	43	10.0	12.1	83%		15.4	127%
Tsaile Canyon #1	SC	8160	22	5.9	0.7	843%		16.9	2414%
Tsaile Canyon #3	SC	8920	32	10.0	5.5	182%		21.6	393%
Upper Joes Valley	SNOTEL	8596	36	11.8				17.7	
Upper San Juan	SNOTEL	10140	76	25.0	27.0	93%		47.3	175%
Upper San Juan	SC	10200			28.5			37.0	130%
Upper Taylor	SNOTEL	10717	56	16.0	12.6	127%		21.7	172%

Vail Mountain	SNOTEL	10310	56	19.8	18.8	105%	21.5	114%
Vallecito	SNOTEL	10782	56	17.0	14.2	120%	26.3	185%
Vasquez	SC	9600	46	13.7	13.0	105%	11.6	89%
Wager Gulch	SNOTEL	11132	37	10.2			11.6	
Weminuche Creek	SNOTEL	10749	61	19.3	15.0	129%	32.0	213%
Whiskey Creek	SC	9050	41	13.6	6.5	209%	23.9	368%
Whiskey Park	SNOTEL	9020	80	31.8	25.4	125%	39.7	156%
White River #1	SNOTEL	8641	44	16.2	10.0	162%	21.1	211%
Widtsoe #3	SNOTEL	9640	48	17.7	10.1	175%	21.0	208%
Wilbur Bench	SNOTEL	9171	42	13.2	10.6	125%	23.0	217%
Willow Creek Pass	SC	9540	43	11.7	11.6	101%	18.2	157%
Willow Creek Pass	SNOTEL	9523	50	14.0	12.6	111%	17.5	139%
Wolf Creek Peak	SNOTEL	9796	81	21.5			36.0	
Wolf Creek Summit	SNOTEL	10957	82	28.3	28.4	100%	48.4	170%
Wrigley Creek	SNOTEL	9327	39	12.2			19.4	
Wurtz Lower	SC	10690	55	14.9	15.9	94%	16.3	103%
Yampa View	SC	8200	53	18.7	13.8	136%	22.2	161%
Basin Index						115%		158%
# of sites						176		176

Chuska - Defiance	Network	Elevation (ft)	Depth (in)	SWE (in)	Median (in)	% Median	Last Year SWE (in)	Last Year % Median
Beaver Spring	SNOTEL	9255	33	12.0	2.0	600%	19.1	955%
Beaver Spring	SC	9220	36	10.7	6.0	178%	21.9	365%
Bowl Canyon	SC	8980	37	10.4	6.6	158%	18.0	273%
Fluted Rock	SC	7800	15	3.4	0.0		7.7	
Hidden Valley	SC	8480	34	10.2	3.2	319%	17.6	550%
Missionary Spring	SC	7940	6	1.0	0.0		6.5	
Navajo Whiskey Ck	SNOTEL	9064	30	11.1	0.0		21.1	
Tsaile Canyon #1	SC	8160	22	5.9	0.7	843%	16.9	2414%
Tsaile Canyon #3	SC	8920	32	10.0	5.5	182%	21.6	393%
Whiskey Creek	SC	9050	41	13.6	6.5	209%	23.9	368%
Basin Index						290%		571%
# of sites						10		10

Report Created:
4/4/2024 8:52:18 AM

Streamflow Forecast Summary: April 1, 2024
(Medians based On 1991-2020 reference period)

Forecast Exceedance Probabilities For Risk Assessment
Chance that actual volume will exceed forecast

Gila	Forecast Period	90% (KAF)	70% (KAF)	50% (KAF)	% Median	30% (KAF)	10% (KAF)	30yr Median (KAF)
San Francisco R at Glenwood ²	APR-MAY	10.6	15.1	19.2	362%	23	30	5.3
Gila R at Gila ²	APR-MAY	15.8	21	25	184%	30	38	13.6
Gila R nr Solomon ²	APR	21	30	38	200%	48	65	19
	APR-MAY	34	45	55	204%	66	85	27
Gila R bl Blue Ck nr Virden ²	APR-MAY	17.6	25	31	217%	39	50	14.3
San Francisco R at Clifton ²	APR-MAY	17.4	24	28	231%	34	43	12.1
San Carlos Reservoir Inflow ²	APR-MAY	10.7	26	39	398%	56	86	9.8

- 1) 90% And 10% exceedance probabilities are actually 95% And 5%
2) Forecasts are For unimpaired flows. Actual flow will be dependent On management of upstream reservoirs And diversions

Forecast Exceedance Probabilities For Risk Assessment
Chance that actual volume will exceed forecast

Salt	Forecast Period	90% (KAF)	70% (KAF)	50% (KAF)	% Median	30% (KAF)	10% (KAF)	30yr Median (KAF)
Salt R nr Roosevelt ²	APR	64	76	87	164%	98	116	53
	APR-MAY	102	122	135	169%	149	173	80
Tonto Ck ab Gun Ck nr Roosevelt	APR	6.2	8.9	11.8	393%	16.2	27	3
	APR-MAY	7.3	9.7	12.2	313%	15.8	24	3.9

- 1) 90% And 10% exceedance probabilities are actually 95% And 5%
2) Forecasts are For unimpaired flows. Actual flow will be dependent On management of upstream reservoirs And diversions

Forecast Exceedance Probabilities For Risk Assessment
Chance that actual volume will exceed forecast

Verde	Forecast Period	90% (KAF)	70% (KAF)	50% (KAF)	% Median	30% (KAF)	10% (KAF)	30yr Median (KAF)
Verde R bl Tangle Ck ab Horseshoe Dam ²	APR	14.6	19.7	24	175%	31	45	13.7
	APR-MAY	35	43	48	209%	54	71	23

- 1) 90% And 10% exceedance probabilities are actually 95% And 5%
2) Forecasts are For unimpaired flows. Actual flow will be dependent On management of upstream reservoirs And diversions

Forecast Exceedance Probabilities For Risk Assessment
Chance that actual volume will exceed forecast

East R at Almont	APR-JUL	44	57	68	103%	79	98	66
Colorado R nr Kremmling ²	APR-JUL	147	171	188	116%	205	235	162
Fontenelle Reservoir Inflow ²	APR-JUL	675	815	920	112%	1030	1210	820
San Miguel R nr Placerville	APR-JUL	435	575	680	99%	795	975	685
Lake Fk at Gateview	APR-JUL	61	77	88	73%	100	120	121
New Fork R nr Big Piney	APR-JUL	75	90	101	84%	113	131	120
Seven Mile Ck nr Fish Lake	APR-JUL	235	295	340	111%	385	460	305
Joes Valley Reservoir Inflow ²	APR-JUL	5.8	7	8	131%	9	10.6	6.1
Little Snake R nr Lily ²	APR-JUL	45	53	59	134%	65	76	44
Big Brush Ck ab Red Fleet Reservoir	APR-JUL	240	315	375	136%	440	540	275
Little Snake R nr Dixon ²	APR-JUL	11.6	16	19	96%	22	26	19.7
Green Mountain Reservoir Inflow ²	APR-JUL	250	320	370	125%	425	515	295
Tomichi Ck at Sargents	APR-JUL	230	265	295	109%	325	370	270
Roaring Fk at Glenwood Springs ²	APR-JUL	32	41	47	168%	54	65	28
Whiterocks R nr Whiterocks	APR-JUL	500	585	650	102%	715	820	640
Ridgway Reservoir Inflow ²	APR-JUL	29	39	47	109%	56	70	43
Colorado R nr Cisco ²	APR-JUL	55	67	76	80%	85	100	95
Price R nr Scofield Reservoir ²	APR-JUL	2700	3290	3730	99%	4190	4920	3750
Willow Ck Reservoir Inflow ²	APR-JUL	33	40	45	173%	50	58	26
Pine Ck ab Fremont Lake	APR-JUL	35	46	55	115%	64	80	48
Elk R nr Milner	APR-JUL	75	83	89	90%	95	103	99
Tomichi Ck at Gunnison	APR-JUL	270	330	375	112%	420	480	335
Taylor Park Reservoir Inflow ²	APR-JUL	52	69	83	143%	98	122	58
Paonia Reservoir Inflow ²	APR-JUL	77	90	100	123%	110	126	81
Fish Ck ab Reservoir nr Scofield	MAR-JUN	40	53	63	91%	74	91	69
Ferron Ck (Upper Station) nr Ferron	APR-JUN	37	50	60	95%	71	88	63
Green R at Warren Bridge	APR-JUL	27	31	35	177%	39	45	19.8
Lake Granby Inflow ²	APR-JUL	29	34	38	119%	42	48	32
	APR-JUL	184	210	230	98%	250	275	235
	APR-JUL	159	191	215	96%	240	280	225

Blue Mesa Reservoir Inflow ²	APR-JUL	235	275	300	118%	325	365	255
Stateline Reservoir Inflow ²	APR-JUL	465	560	630	110%	705	820	575
Captain Tom Wash nr Two Gray Hills ²	APR-JUL	21	26	30	115%	34	40	26
	MAR-MAY	2	3.2	3.9	629%	4.8	5.8	0.62

1) 90% And 10% exceedance probabilities are actually 95% And 5%

2) Forecasts are For unimpaired flows. Actual flow will be dependent On management of upstream reservoirs And diversions