



Natural
Resources
Conservation
Service

Arizona

Basin Outlook Report

March 1, 2024



Issued by

Terry Cosby
Chief
Natural Resources Conservation Service
U.S. Department of Agriculture

Released by

Keisha L. Tatem
State Conservationist
Natural Resources Conservation Service
Phoenix, Arizona

Basin Outlook Reports And Federal – State – Private Cooperative Snow Surveys

How forecasts are made

Most of the annual streamflow in Arizona originates as snowfall that has accumulated in the mountains during the winter and early spring. As the snowpack accumulates, hydrologists estimate the runoff that will occur when it melts. Measurements of snow water equivalent at selected manual snow courses and automated Snow Telemetry (SNOTEL) sites, along with precipitation and streamflow values, are used in statistical and simulation models to prepare runoff forecasts. These forecasts are coordinated between hydrologists in the Natural Resources Conservation Service (NRCS) the National Weather Service, and the Salt River Project.

Forecasts of any kind are not perfect. Streamflow forecast uncertainty arises from three primary sources: (1) uncertainty of future weather conditions, (2) uncertainty in the forecasting procedure, and (3) errors in the data. The forecast, therefore, must be interpreted not as a single value but rather as a range of values with specific probabilities of occurrence. The middle of the range is expressed by the 50% exceedance probability forecast, for which there is a 50% chance that the actual flow will be above, and a 50% chance that the actual flow will be below, this value. To describe the expected range around this 50% value, four other forecasts are provided, two smaller values (90% and 70% exceedance probability) and two larger values (30%, and 10% exceedance probability). For example, there is a 90% chance that the actual flow will be more than the 90% exceedance probability forecast.

The wider the spread among these values, the more uncertain the forecast. As the season progresses, forecasts become more accurate, primarily because a greater portion of the future weather conditions become known. This is reflected by a narrowing of the range around the 50% exceedance probability forecast. Users should take this uncertainty into consideration when making operational decisions by selecting forecasts corresponding to the level of risk they are willing to assume about the amount of water to be expected. If users anticipate receiving a lesser supply of water, or are concerned about having an adequate water supply, they may want to base their decisions on the 90% or 70% exceedance probability forecasts. On the other hand, if users anticipate receiving too much water, or are concerned about the threat of flooding, they may want to base their decisions on the 30% or 10% exceedance probability forecasts. Regardless of the forecast value users choose, they should be prepared to deal with either more or less water.



For more water supply and resource management information, contact:

Travis Kolling
Water Supply Specialist
230 N. First Ave., Suite 509
Phoenix, AZ 85003-1706
Phone: (602) 280-8834
Email: travis.kolling@az.usda.gov

The United States Department of Agriculture (USDA) prohibits discrimination in its programs on the basis of race, color, national origin, sex, religion, age, disability, political beliefs and marital or familial status. (Not all prohibited bases apply to all programs.) Persons with disabilities who require alternative means for communication of program information (Braille, large print, audiotape, etc.) should contact USDA's TARGET Center at 202-720-2600 (voice and TDD).

To file a complaint, write the Secretary of Agriculture, U.S. Department of Agriculture, Washington, D.C., 20250, or call 1-800-245-6340 (voice) or (202) 720-1127 (TDD). USDA is an equal employment opportunity employer.

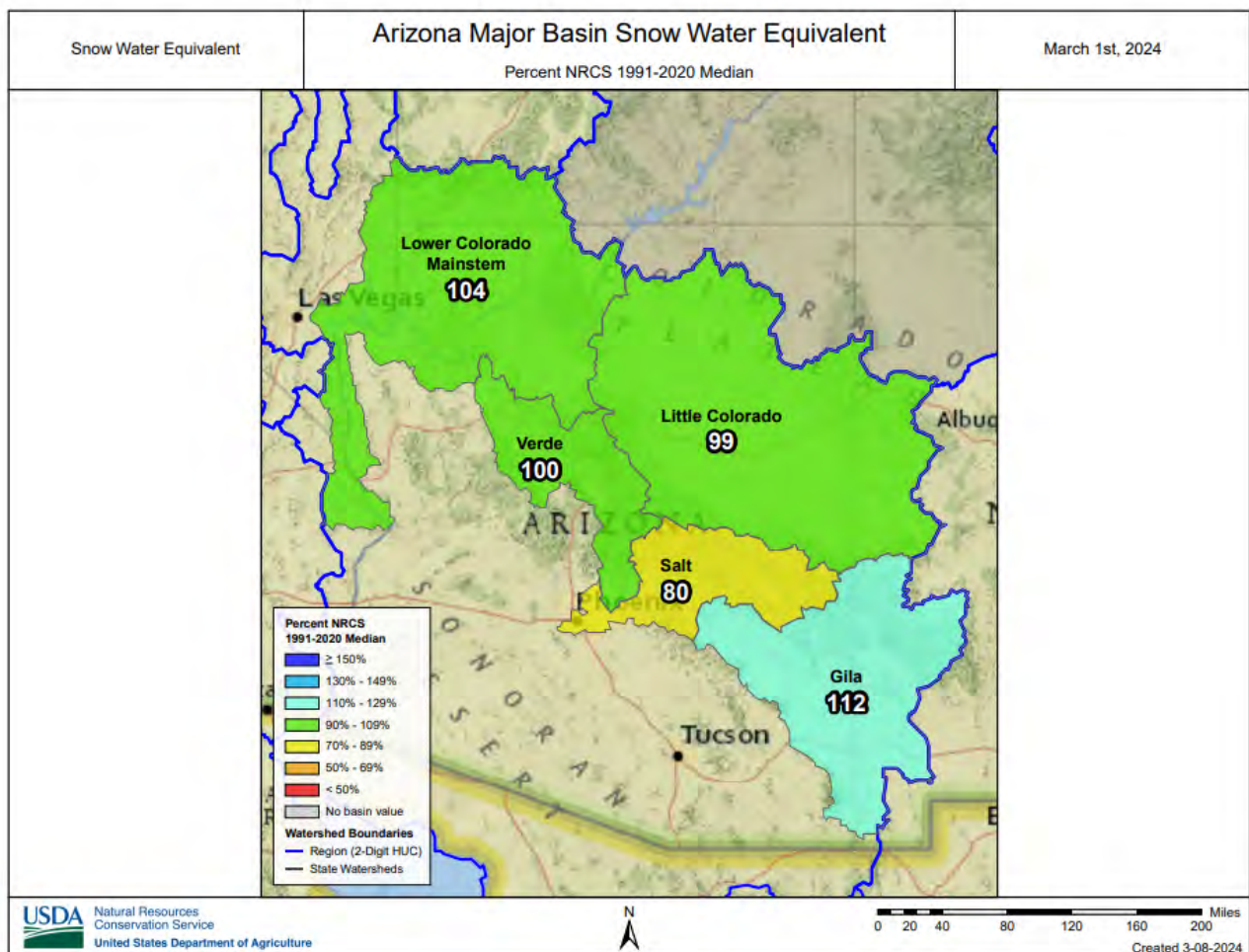
ARIZONA Basin Outlook Report as of March 1, 2024

SUMMARY

As of March 1, snowpack is at below median to above median levels throughout the major basins of the state. Precipitation for the month of February was well above median in the major river basins. The Salt and Verde River reservoir system stands at 91 percent of capacity, while San Carlos Reservoir is at 41 percent of capacity. The forecast calls for median to well above median runoff in the major basins for the spring runoff period.

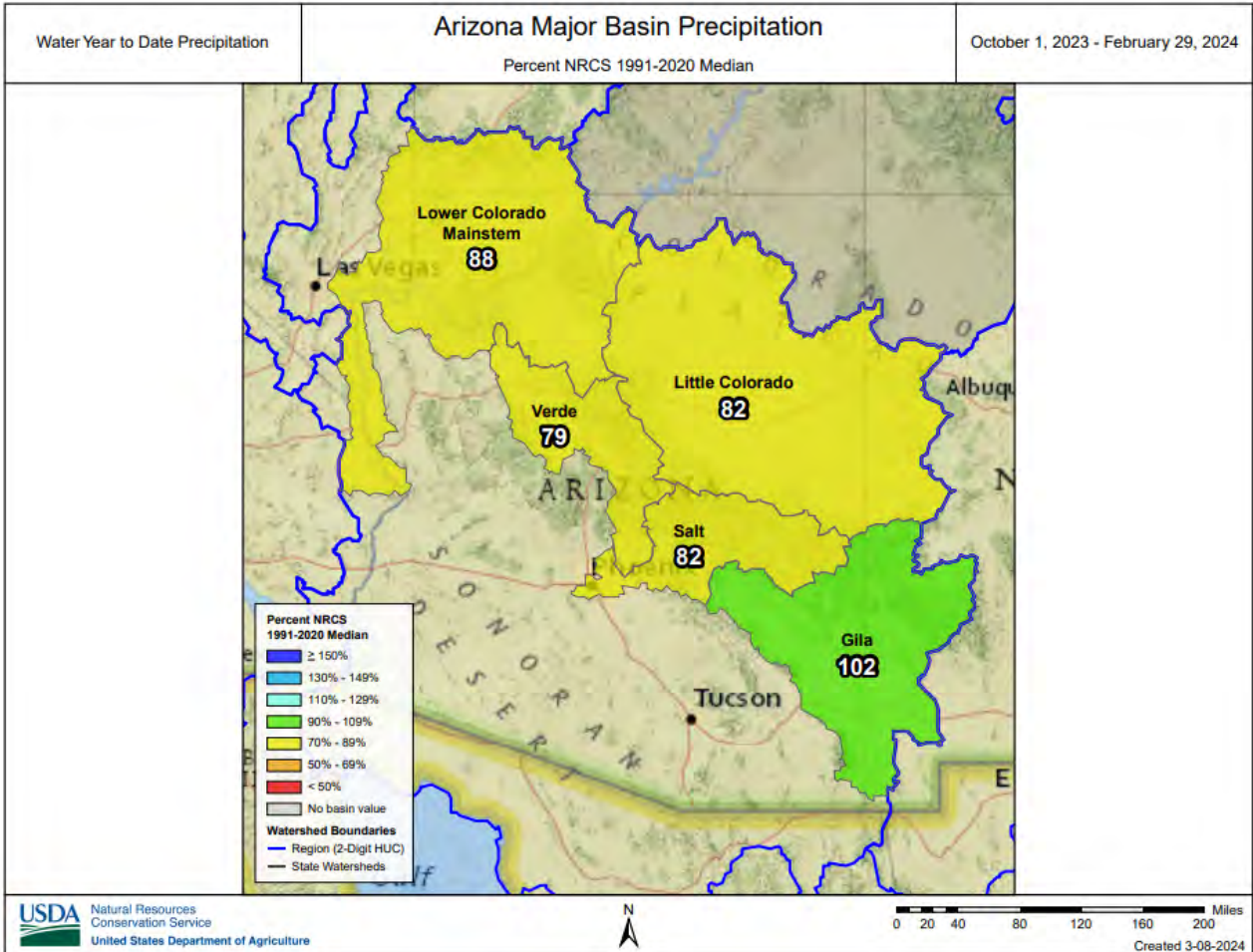
SNOWPACK

Snow water equivalent in the state's major river basins are below median to above median levels, ranging from 80 percent of median in the Salt River Basin to 112 percent of median in the Gila River Basin.



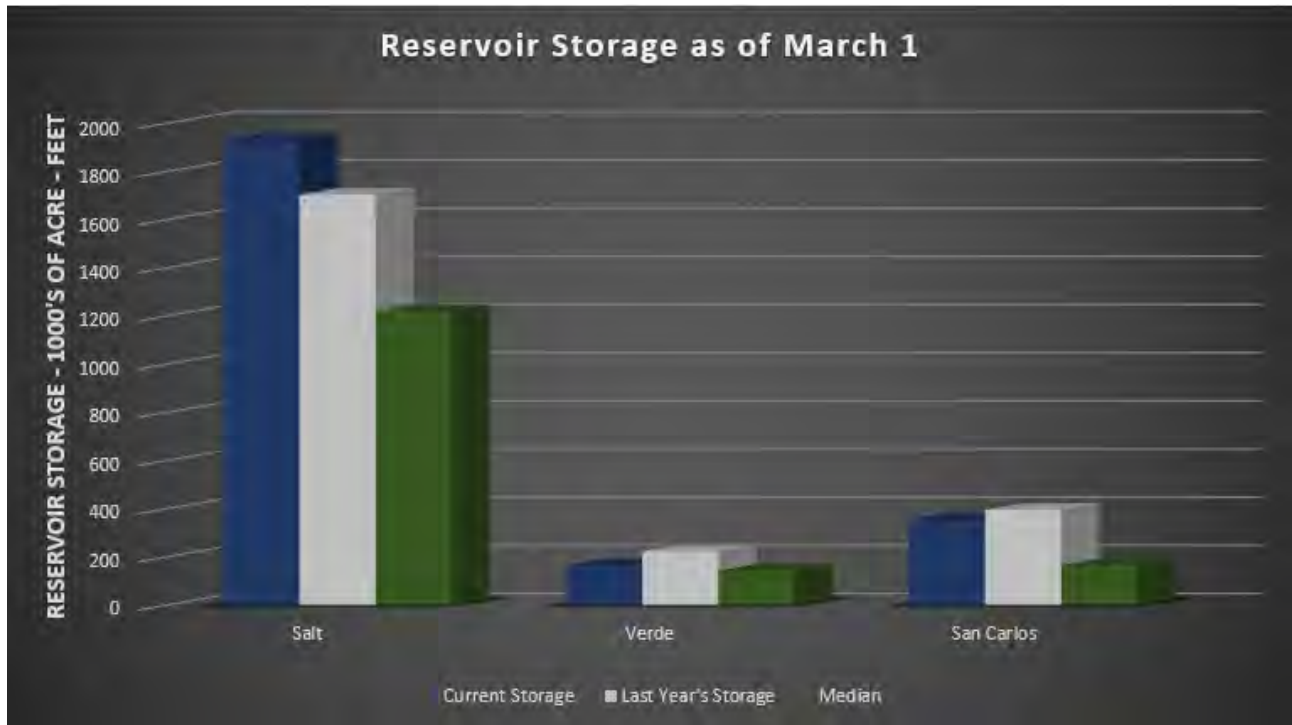
PRECIPITATION

Mountain data from NRCS SNOTEL sites and NWS Cooperator gages show that precipitation for February was well above median in the major river basins, while cumulative precipitation since October 1 ranged from below median to median levels throughout the state.



RESERVOIR STORAGE

As of March 1, the Salt and Verde River reservoir system stands at 91 percent of capacity. San Carlos Reservoir is currently at 41 percent of capacity.

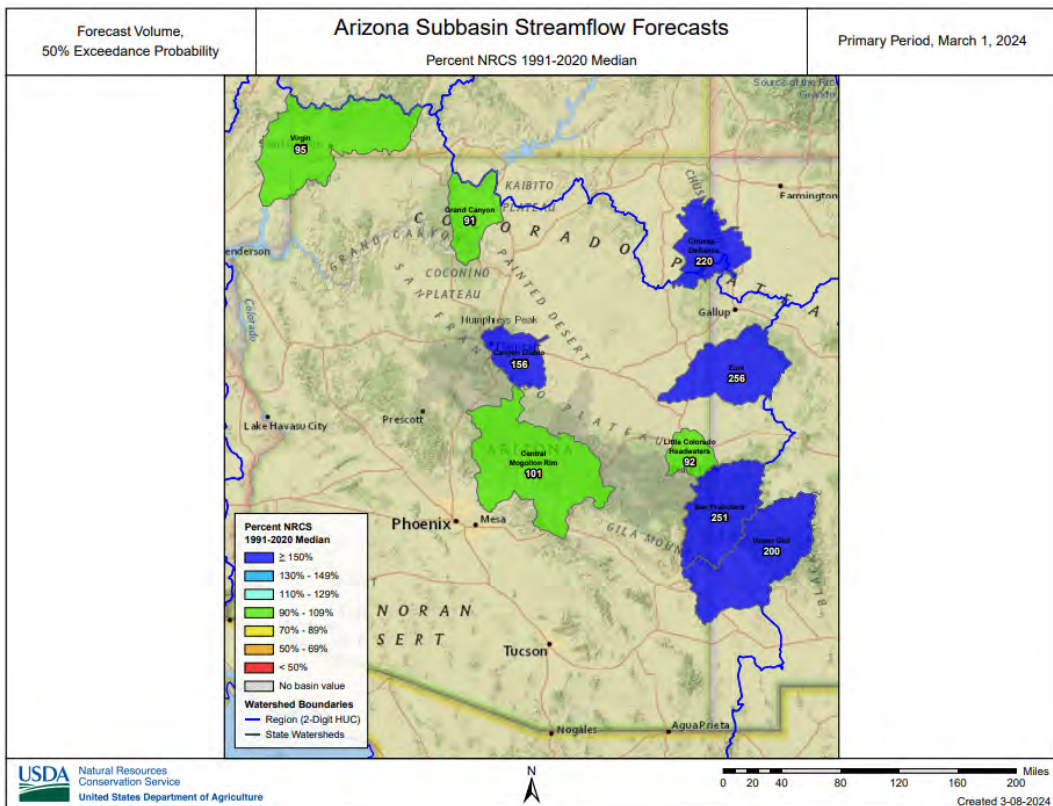
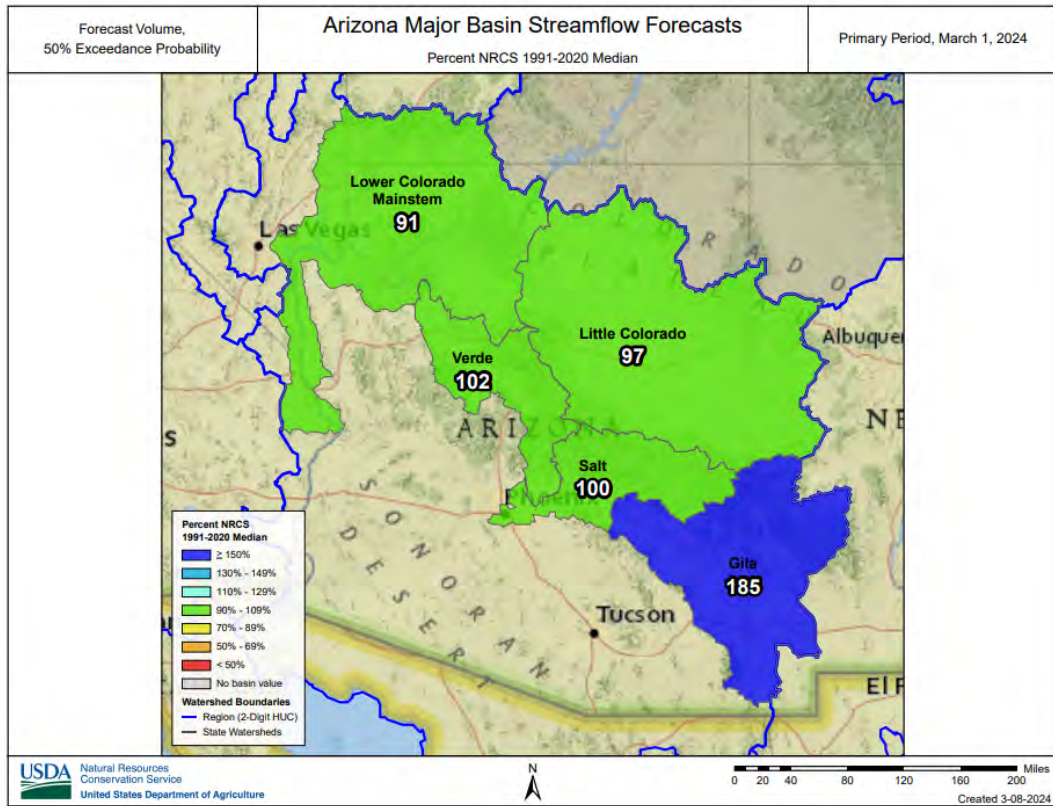


Key storage volumes displayed in thousands of acre-feet (x1000):

<u>Reservoir</u>	<u>Current Storage</u>	<u>Last Year Storage</u>	<u>30-Year Median</u>	<u>Storage Capacity</u>
Salt River System	1932.0	1703.8	1220.0	2025.8
Verde River System	165.6	223.0	142.9	287.4
San Carlos Reservoir	356.6	395.5	165.3	875.0
Lyman Lake	12.2	7.6	8.0	30.0
Lake Havasu	563.2	571.3	569.4	619.0
Lake Mohave	1673.0	1699.0	1670.0	1810.0
Lake Mead	9725.0	7469.0	15462.0	26159.0
Lake Powell	7935.1	5319.8	13114.0	24322.0

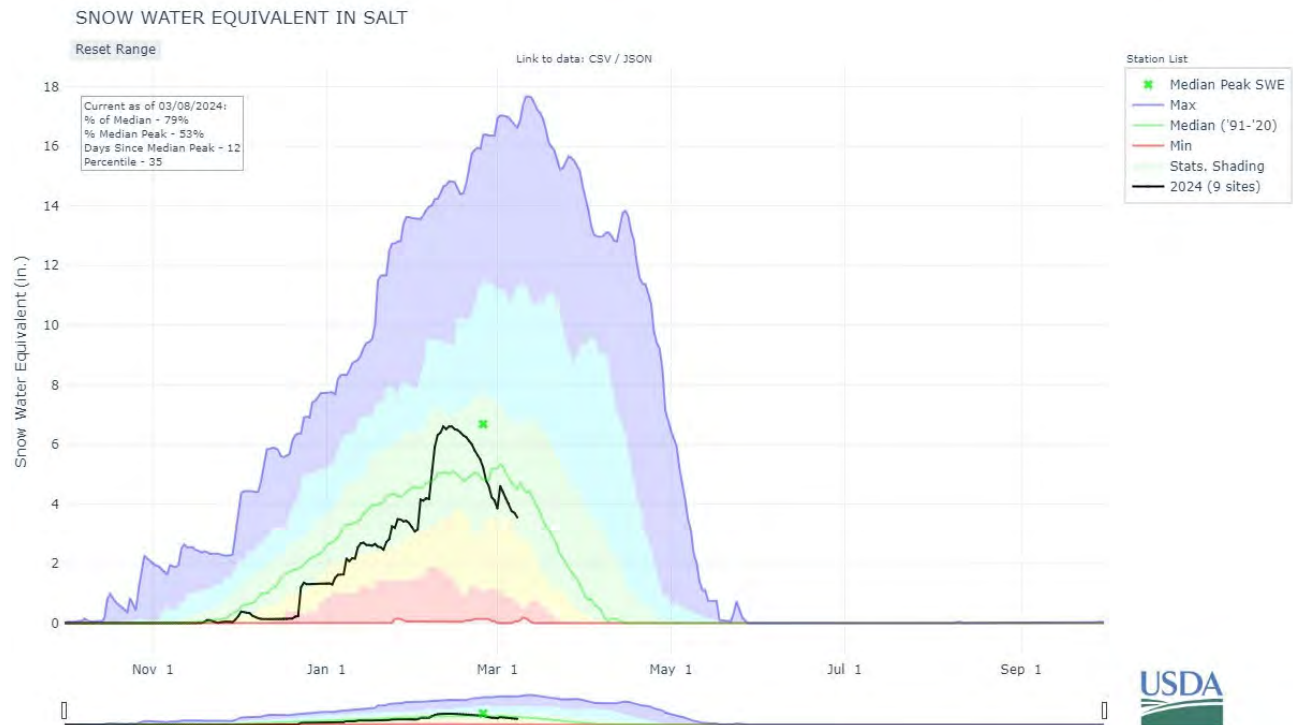
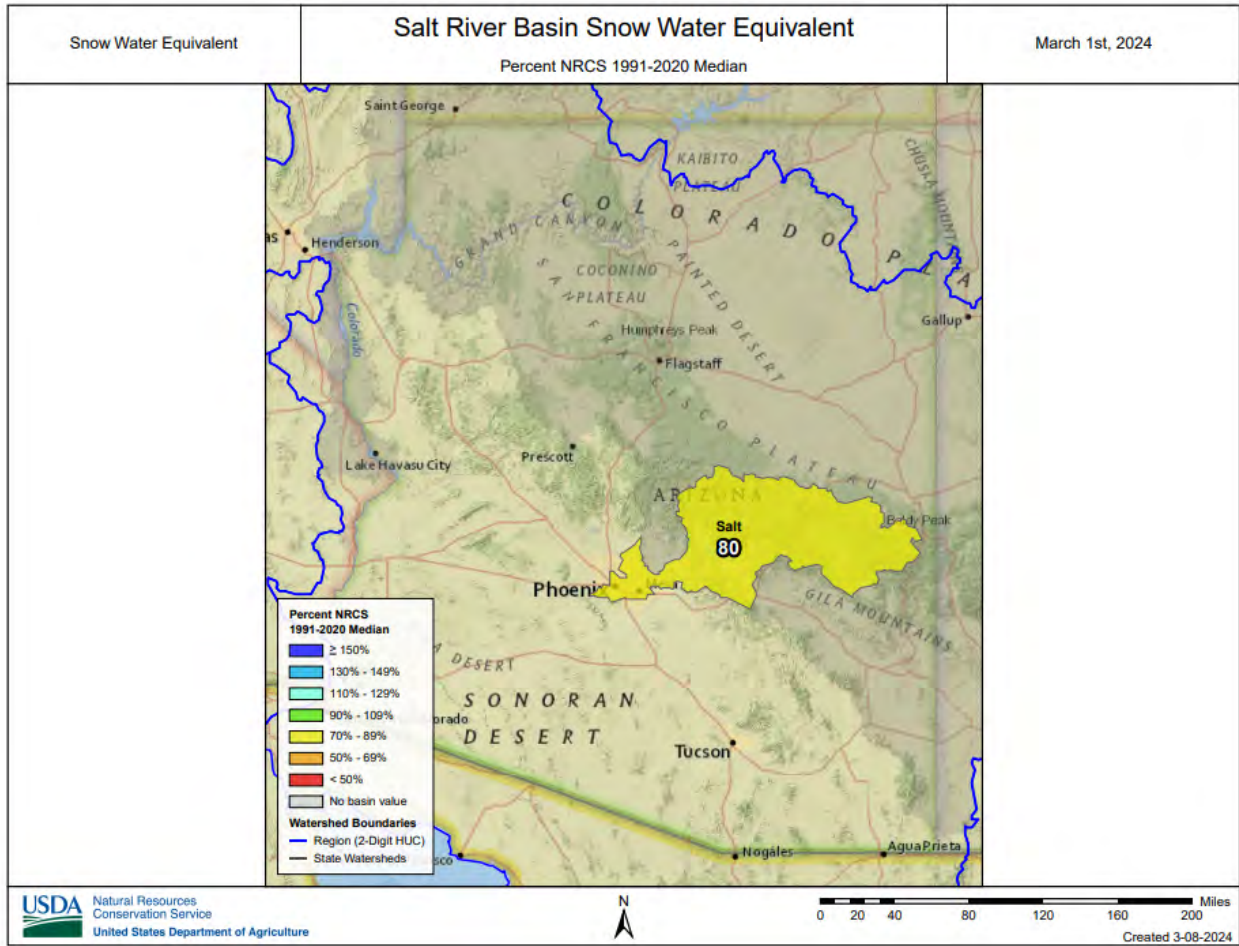
STREAMFLOW

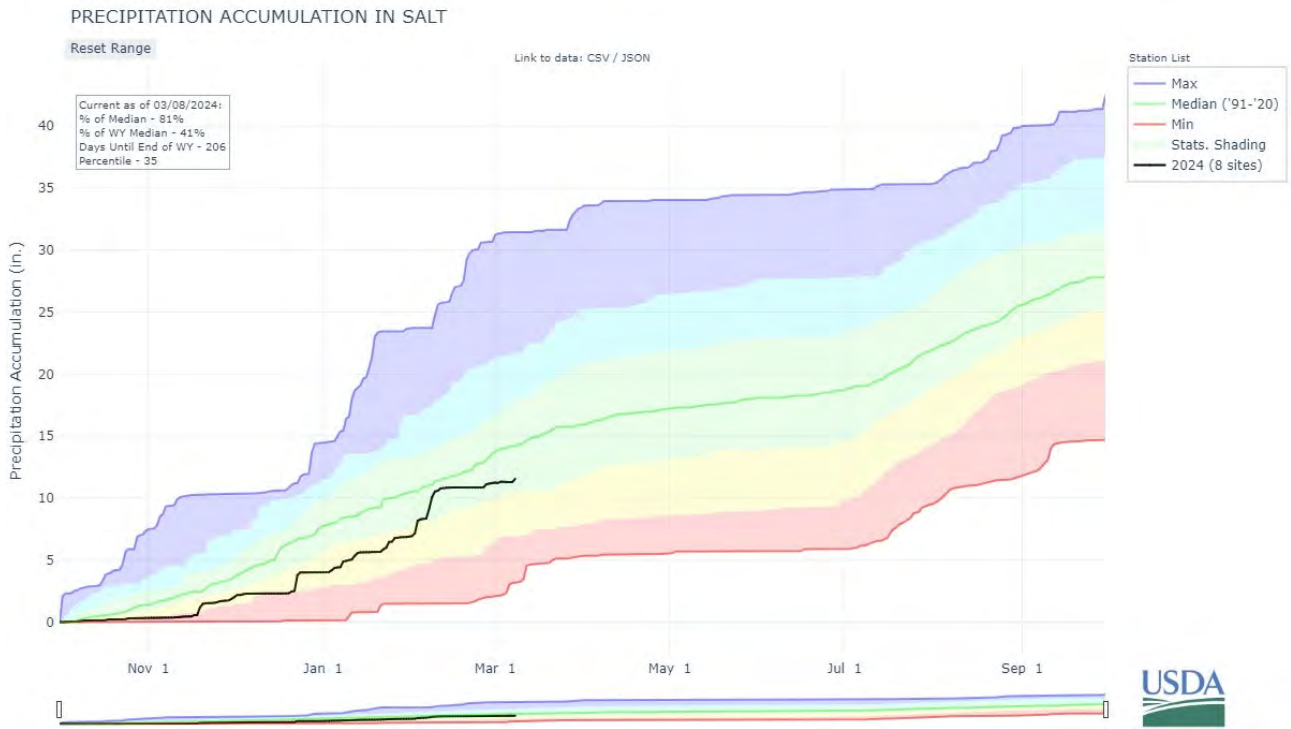
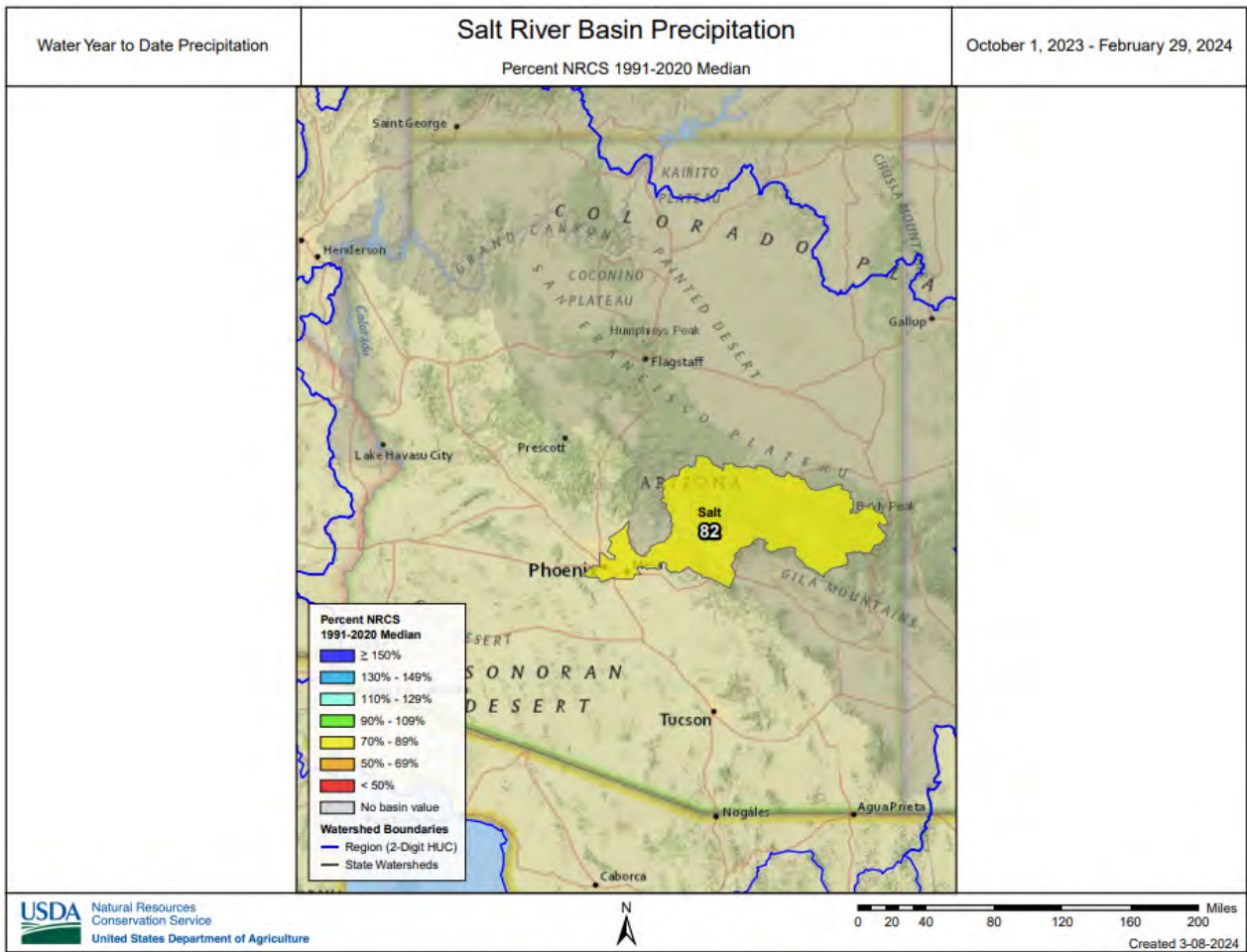
As of March 1, the forecast calls for median to well above median streamflow for the spring runoff period, ranging from 91 percent of median in the Lower Colorado Mainstem to 185 percent of median in the Gila River Basin. Please refer to the basin forecast tables found in this report for more information regarding water supply forecasts.

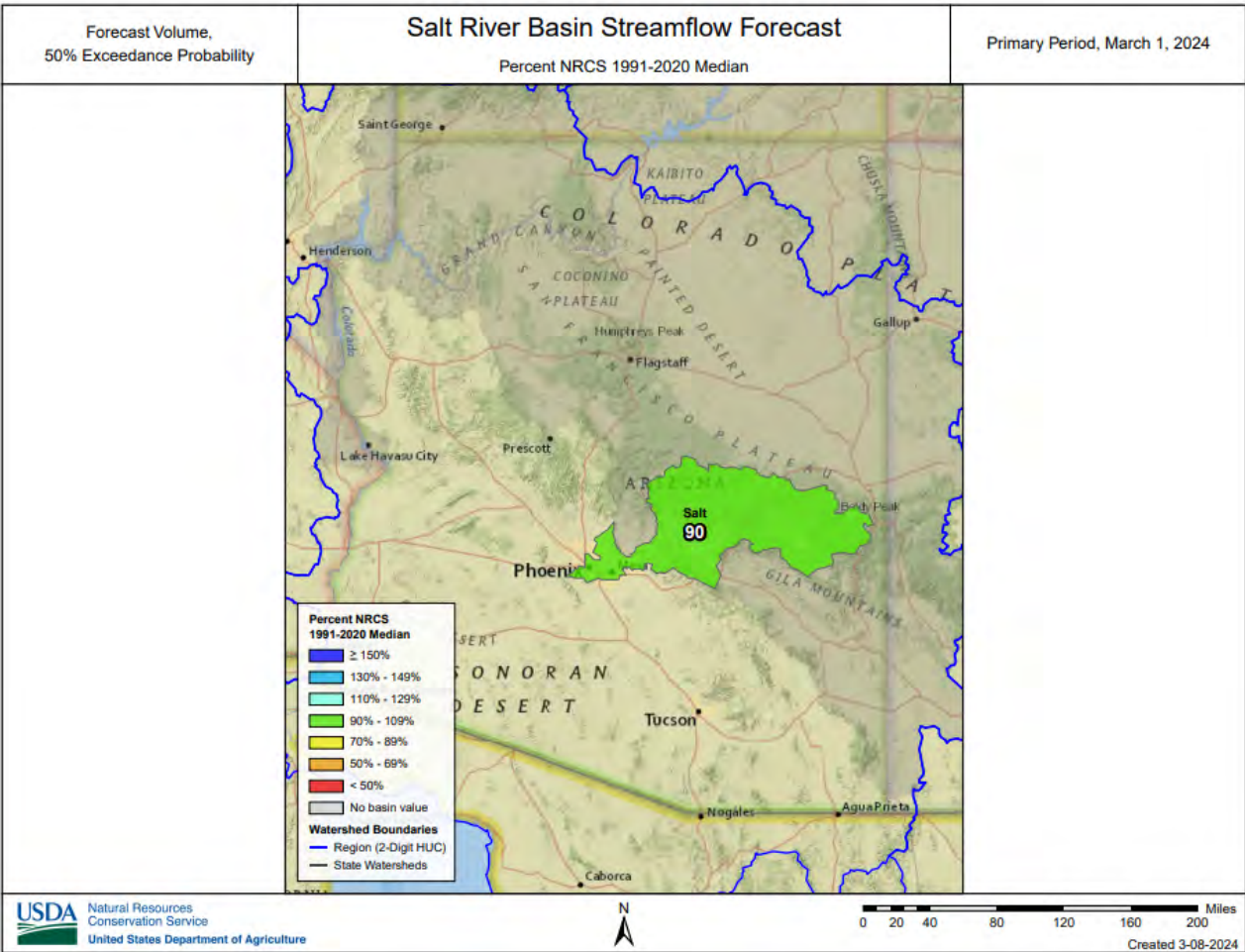


SALT RIVER BASIN as of March 1, 2024

Median streamflow levels are forecast for the basin. In the Salt River, near Roosevelt, the forecast calls for 102% of median streamflow through May, while at Tonto Creek, the forecast calls for 77% of median streamflow through May. Snow survey measurements show the Salt snowpack to be at 80% of median.







Data Current As of: 3/6/2024 11:27:33 AM

Salt
Streamflow Forecasts - March 1, 2024

Forecast Exceedance Probabilities For Risk Assessment
Chance that actual volume will exceed forecast

Salt	Forecast Period	90% (KAF)	70% (KAF)	50% (KAF)	% Median	30% (KAF)	10% (KAF)	30yr Median (KAF)
Salt R nr Roosevelt ²	MAR	23	53	78	91%	108	155	86
	MAR-MAY	37	124	183	102%	240	330	179
Tonto Ck ab Gun Ck nr Roosevelt	MAR	1.15	4.1	9.7	82%	17.6	34	11.9
	MAR-MAY	0.69	7.4	14.3	77%	22	47	18.6

1) 90% And 10% exceedance probabilities are actually 95% And 5%

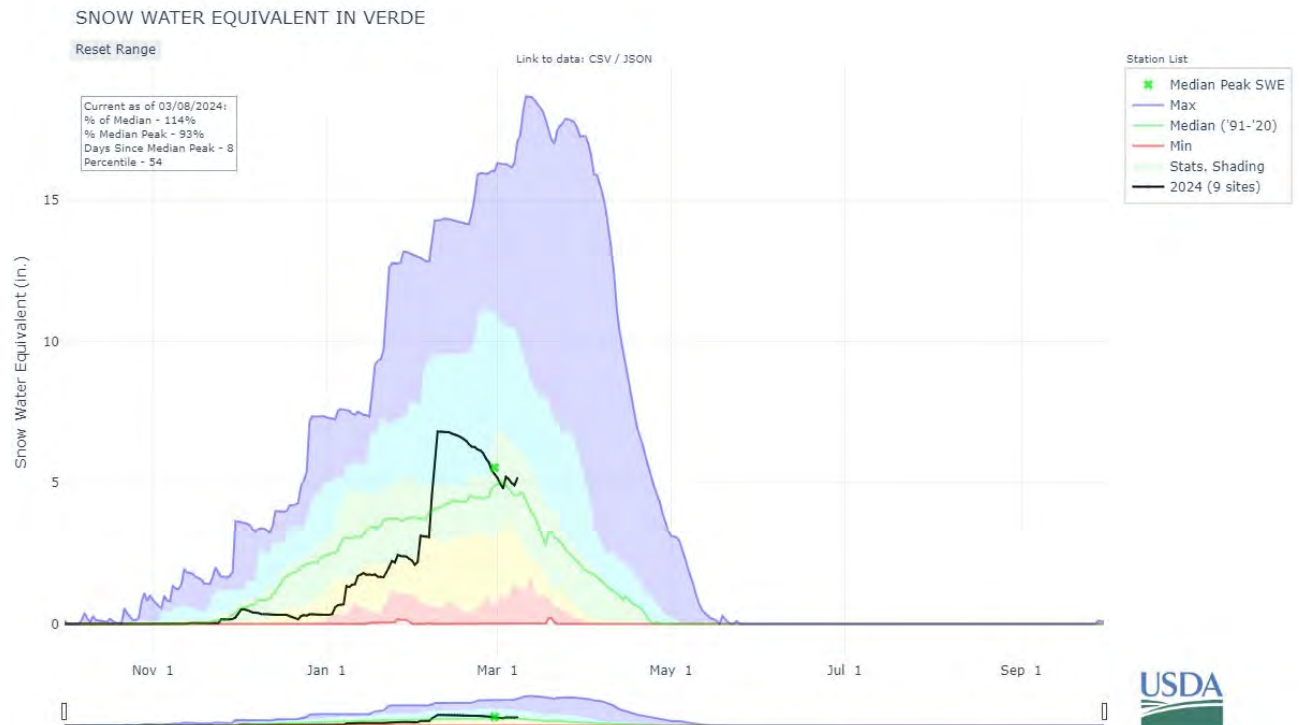
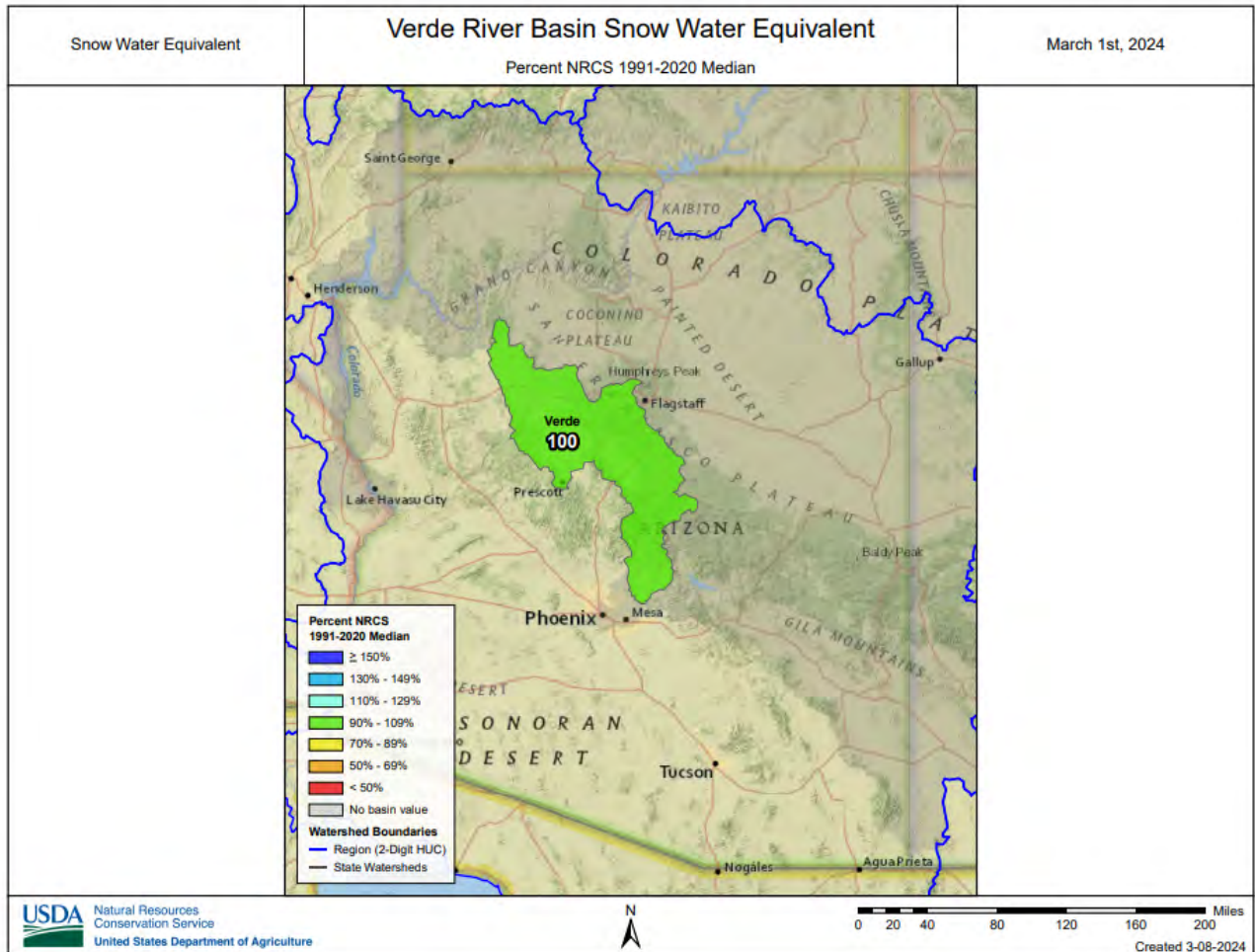
2) Forecasts are For unimpaired flows. Actual flow will be dependent On management of upstream reservoirs And diversions

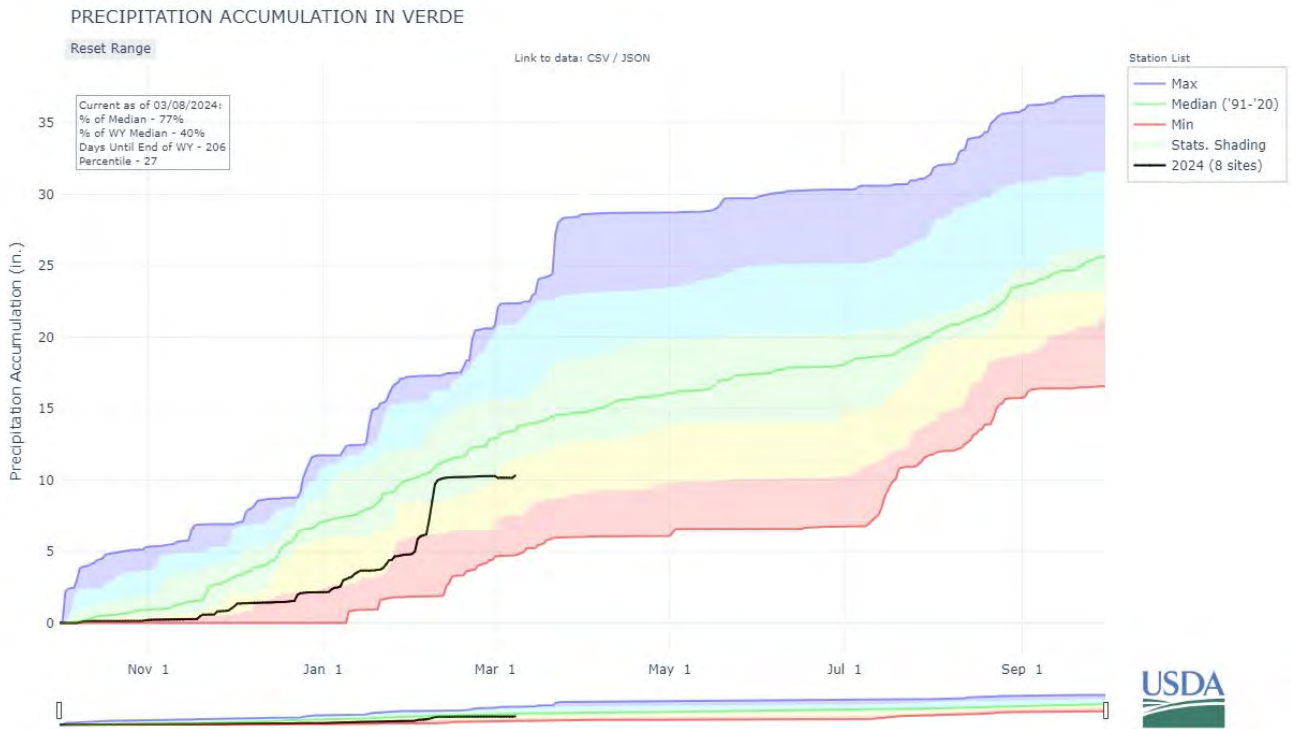
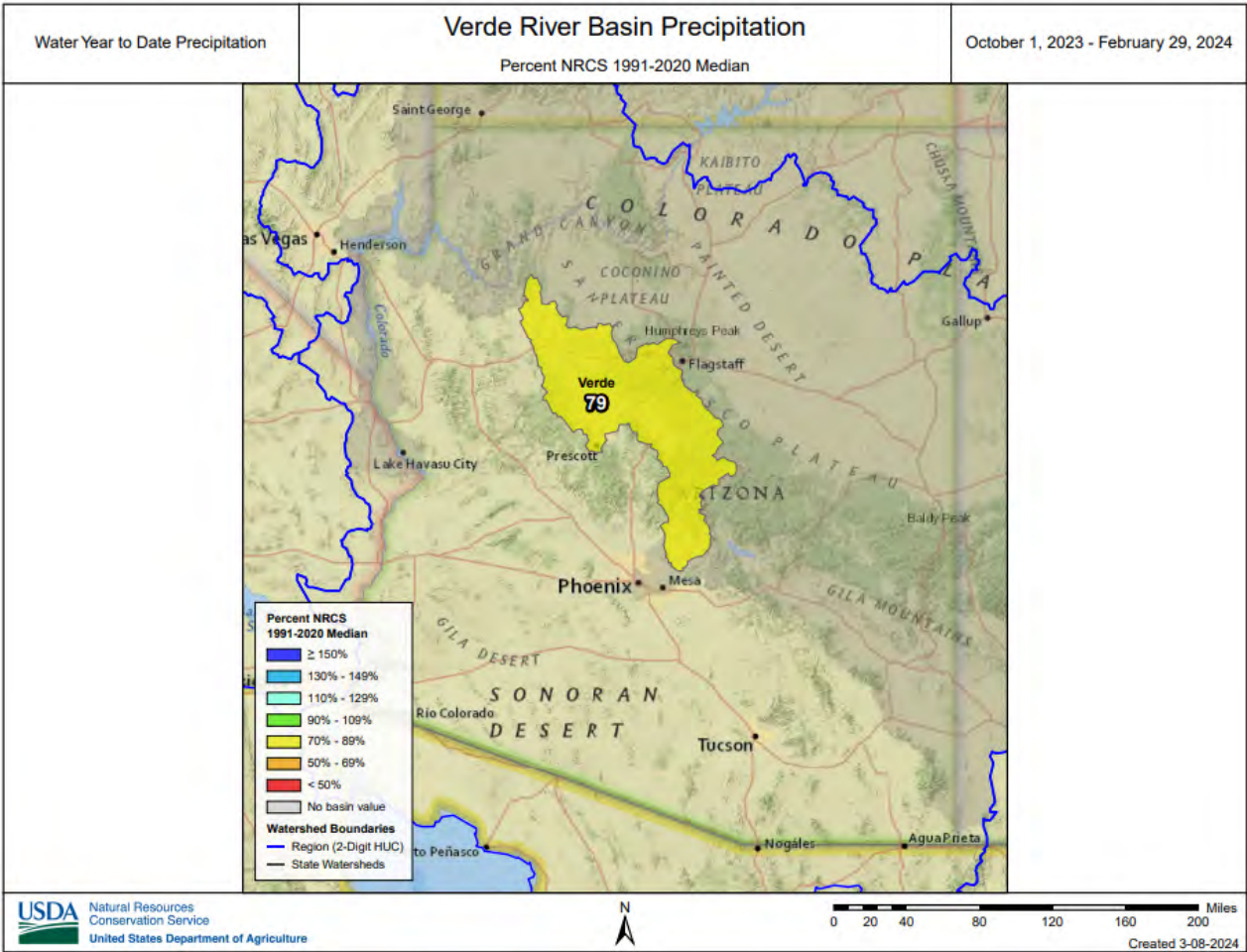
Reservoir Storage End of February, 2024	Current (KAF)	Last Year (KAF)	Median (KAF)	Capacity (KAF)
Salt River Reservoir System	1932.0	1703.8	1220.0	2025.8

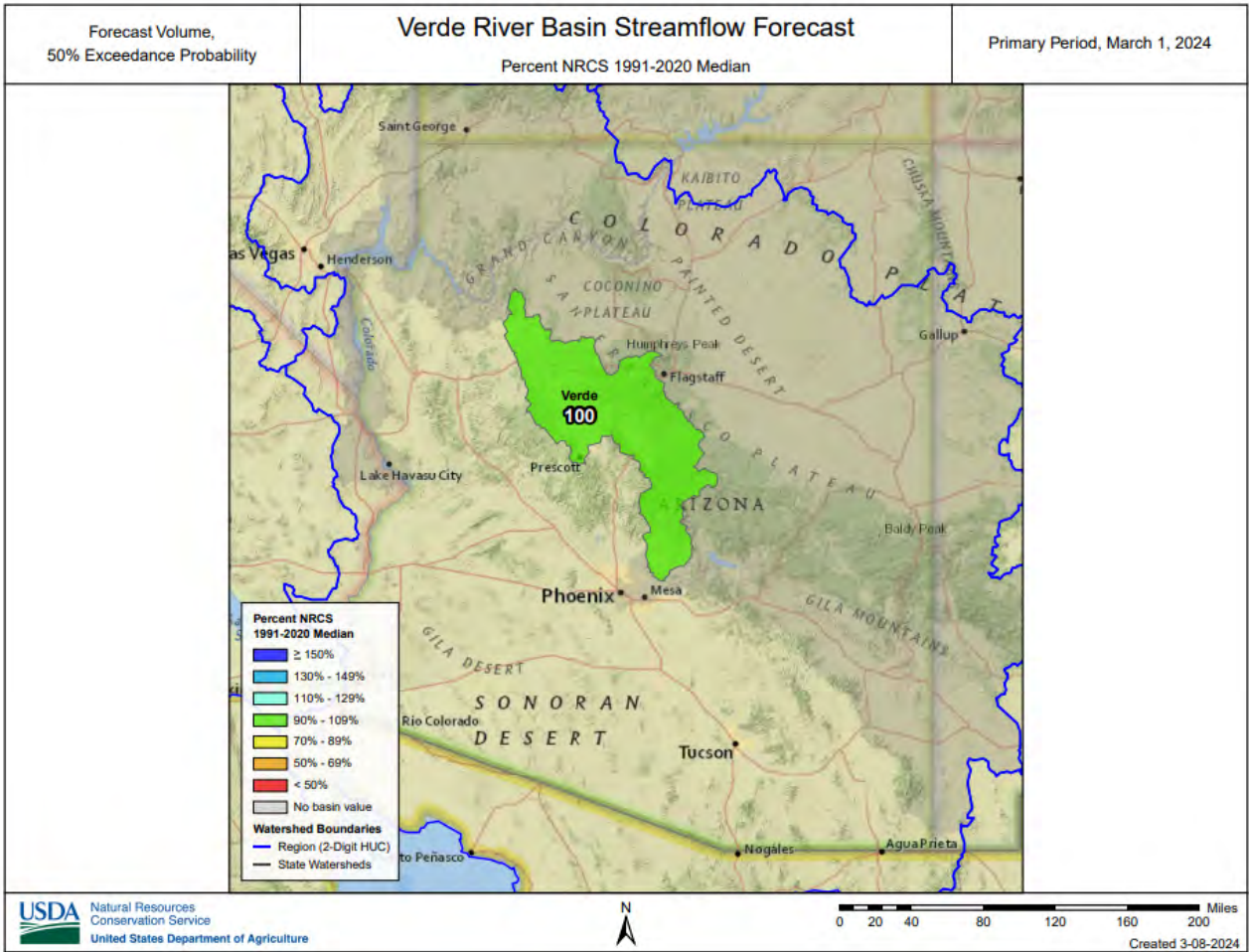
Watershed Snowpack Analysis March 1, 2024	# of Sites	% Median	Last Year % Median
Salt	11	81%	174%
Central Mogollon Rim	7	92%	195%
Upper Salt	8	91%	157%

VERDE RIVER BASIN as of March 1, 2024

Median streamflow levels are forecast for the basin. In the Verde River above Horseshoe Dam, the forecast calls for 102% of median streamflow through May. Snow survey measurements show the Verde snowpack to be at 100% of median.







Data Current As of: 3/6/2024 11:27:35 AM

Verde Streamflow Forecasts - March 1, 2024

Forecast Exceedance Probabilities For Risk Assessment
Chance that actual volume will exceed forecast

Verde	Forecast Period	90% (KAF)	70% (KAF)	50% (KAF)	% Median	30% (KAF)	10% (KAF)	30yr Median (KAF)
Verde R bl Tangle Ck ab Horseshoe Dam ²								
	MAR	15.4	37	54	100%	74	118	54
	MAR-MAY	42	63	84	102%	109	167	82

1) 90% And 10% exceedance probabilities are actually 95% And 5%

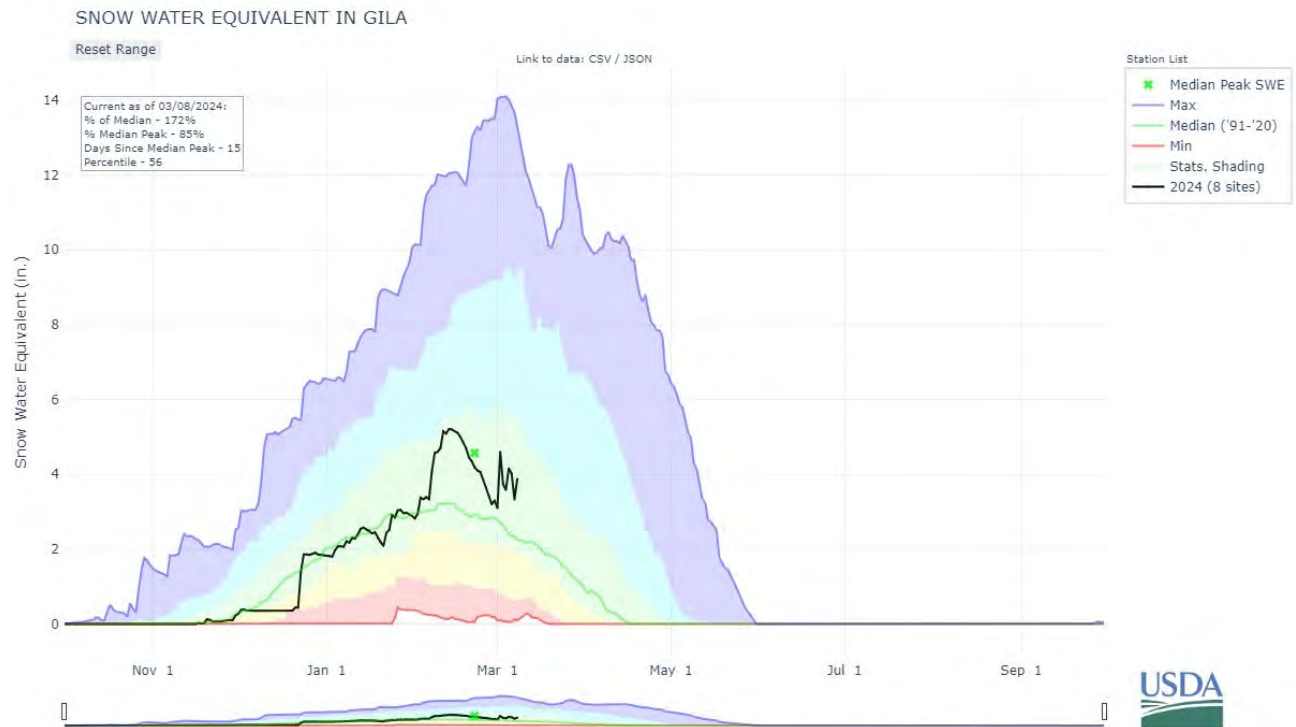
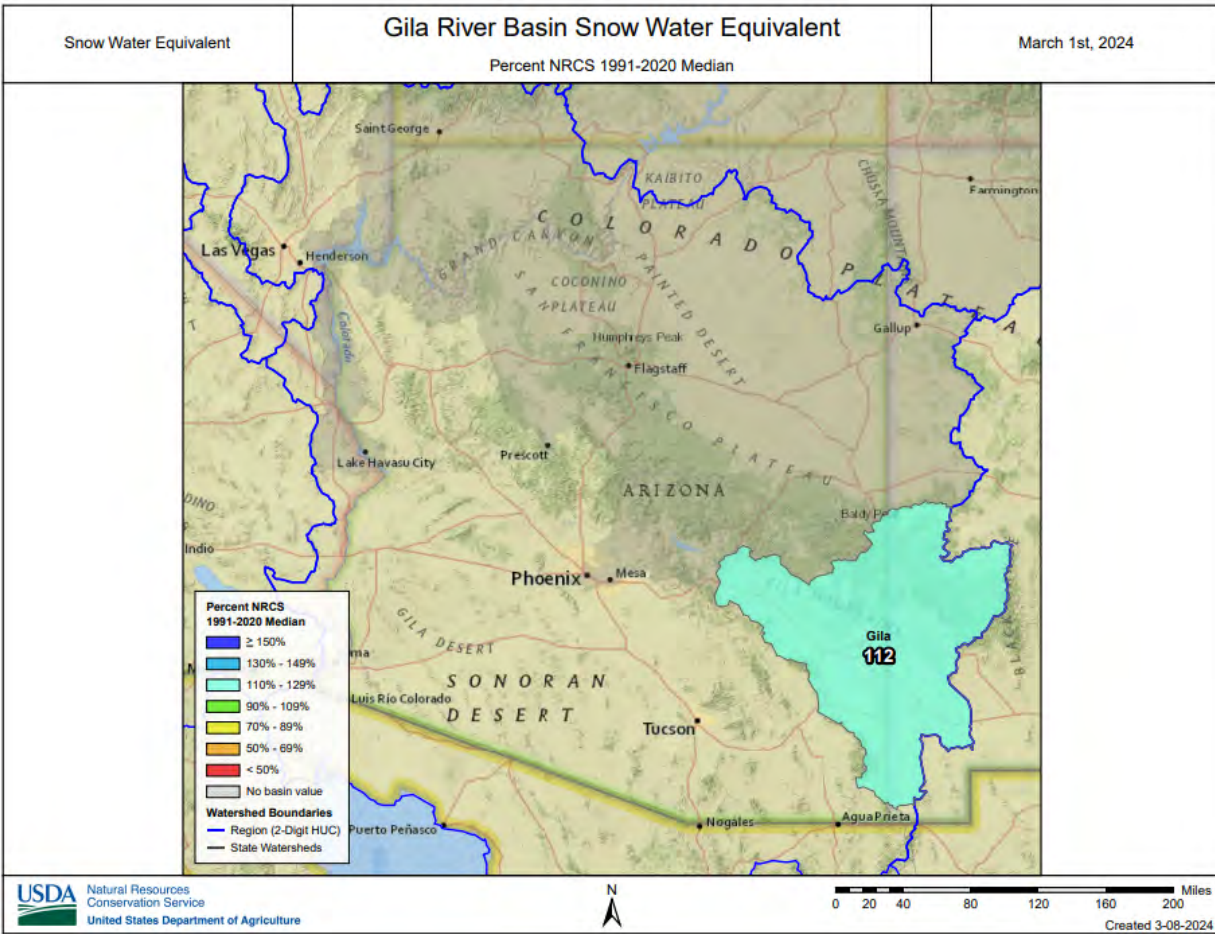
2) Forecasts are For unimpaired flows. Actual flow will be dependent On management of upstream reservoirs And diversions

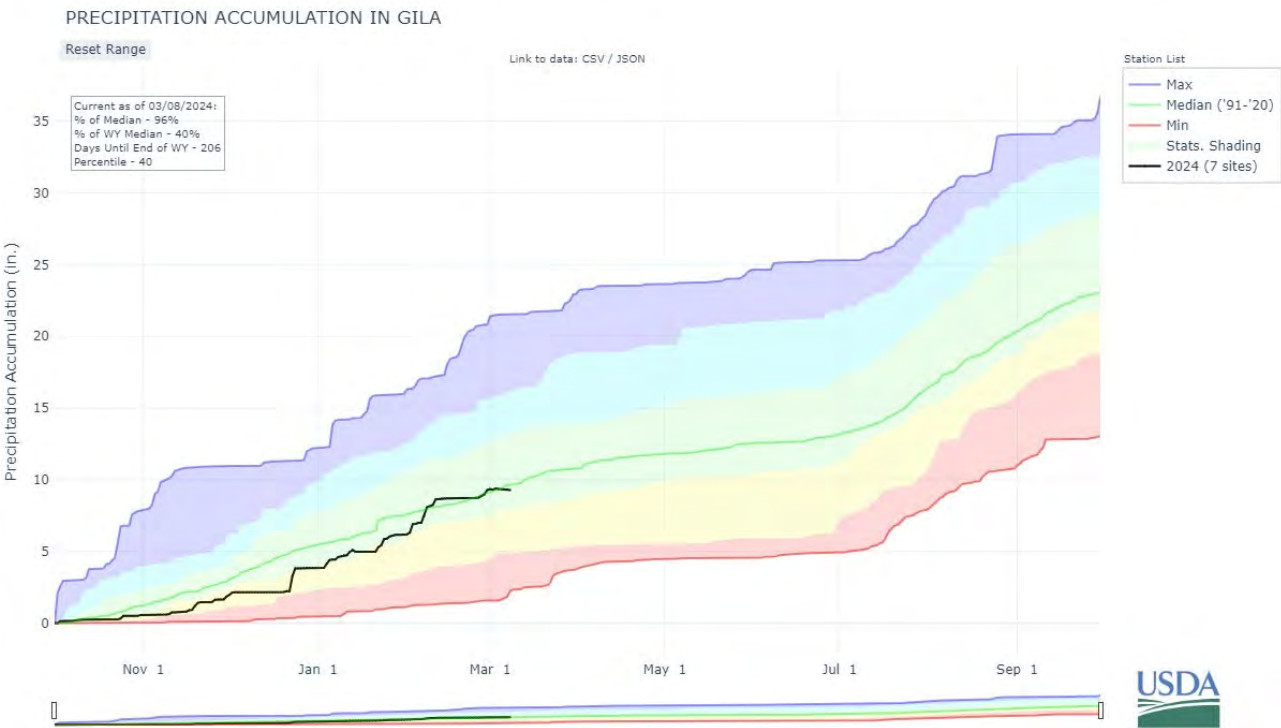
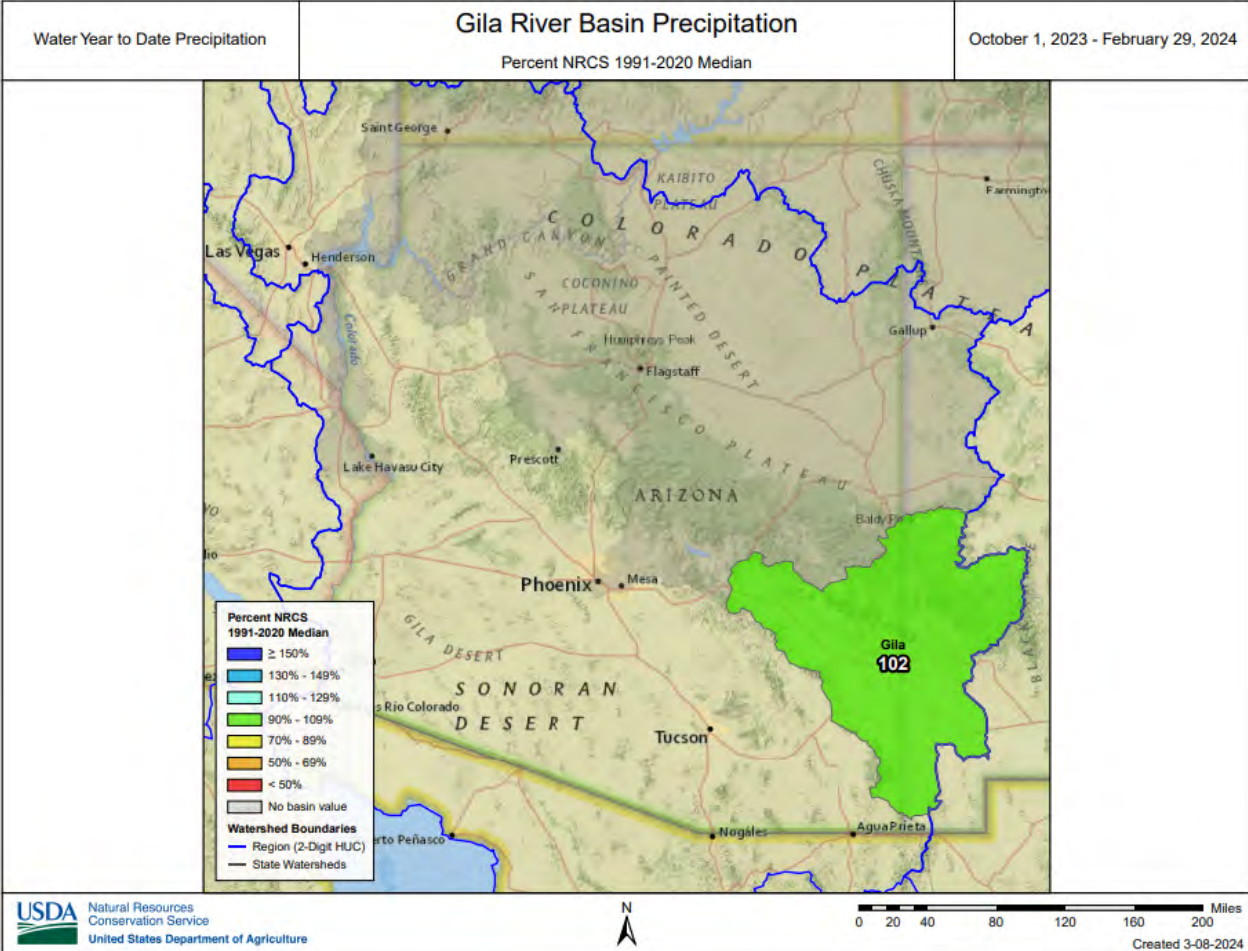
Reservoir Storage End of February, 2024	Current (KAF)	Last Year (KAF)	Median (KAF)	Capacity (KAF)
Verde River Reservoir System	165.6	223.0	142.9	287.4

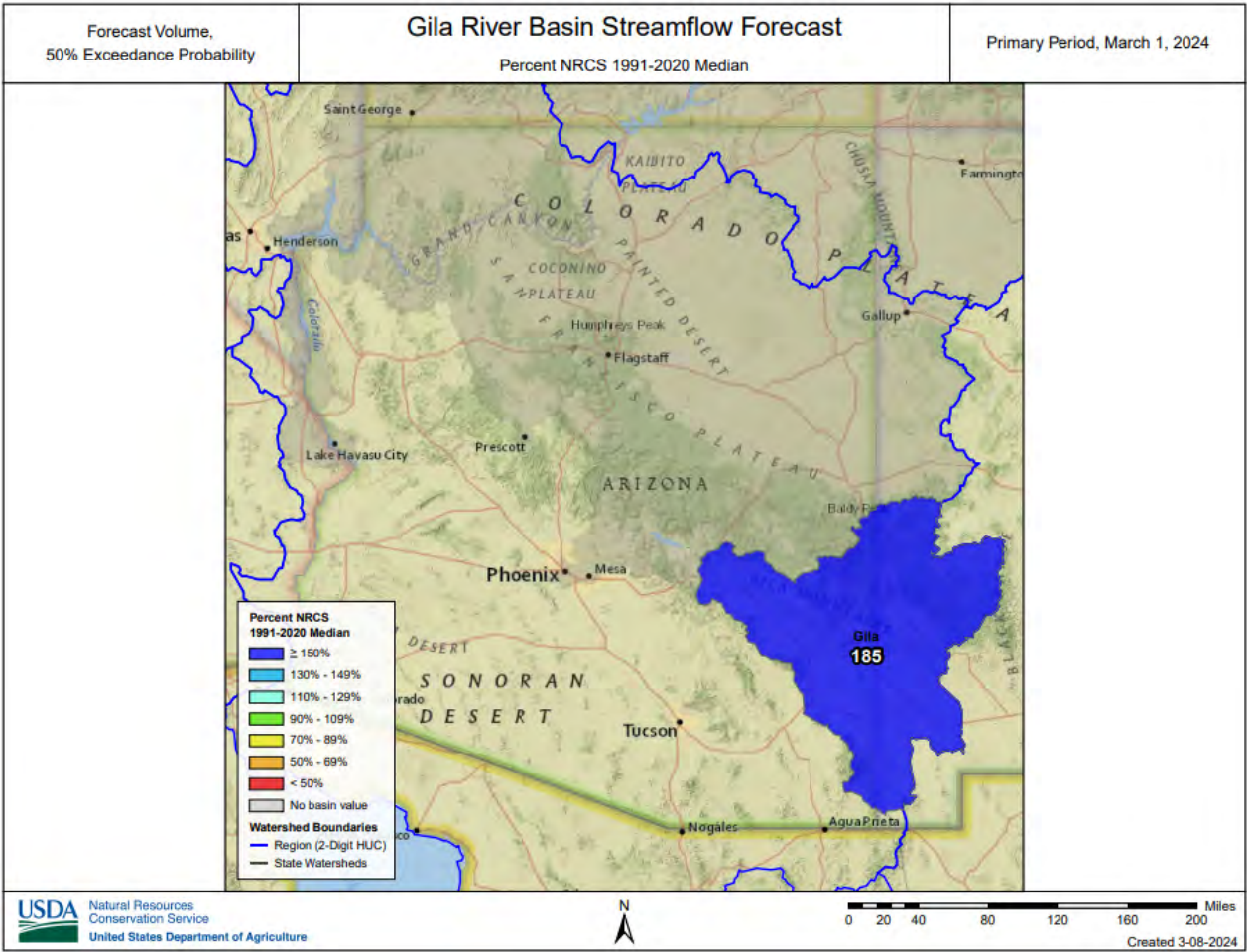
Watershed Snowpack Analysis March 1, 2024	# of Sites	% Median	Last Year % Median
Verde	14	101%	246%
Upper Verde	11	97%	279%

SAN FRANCISCO-UPPER GILA RIVER BASIN as of March 1, 2024

Well above median streamflow levels are forecast for the basin. In the San Francisco River, at Clifton, the forecast calls for 229% of median streamflow levels through May. In the Gila River, near Solomon, the forecast calls for 139% of median streamflow levels through May. At San Carlos Reservoir, inflow to the lake is forecast at 168% of median through May. Snow survey measurements show the snowpack for this basin to be at 112% of median.







Data Current As of: 3/6/2024 11:27:31 AM

Gila Streamflow Forecasts - March 1, 2024

Forecast Exceedance Probabilities For Risk Assessment
Chance that actual volume will exceed forecast

Gila	Forecast Period	90% (KAF)	70% (KAF)	50% (KAF)	% Median	30% (KAF)	10% (KAF)	30yr Median (KAF)
San Francisco R at Glenwood ²	MAR-MAY	8.5	21	33	311%	45	70	10.6
Gila R at Gila ²	MAR-MAY	26	35	43	159%	52	68	27
Gila R nr Solomon ²	MAR	30	46	60	182%	76	106	33
Gila R nr Blue Ck nr Virden ²	MAR-MAY	42	66	86	139%	107	141	62
San Francisco R at Clifton ²	MAR-MAY	35	53	69	238%	88	127	29
San Carlos Reservoir Inflow ²	MAR-MAY	23	42	64	229%	89	136	28
	MAR-MAY	0.61	30	57	168%	91	165	34

1) 90% And 10% exceedance probabilities are actually 95% And 5%

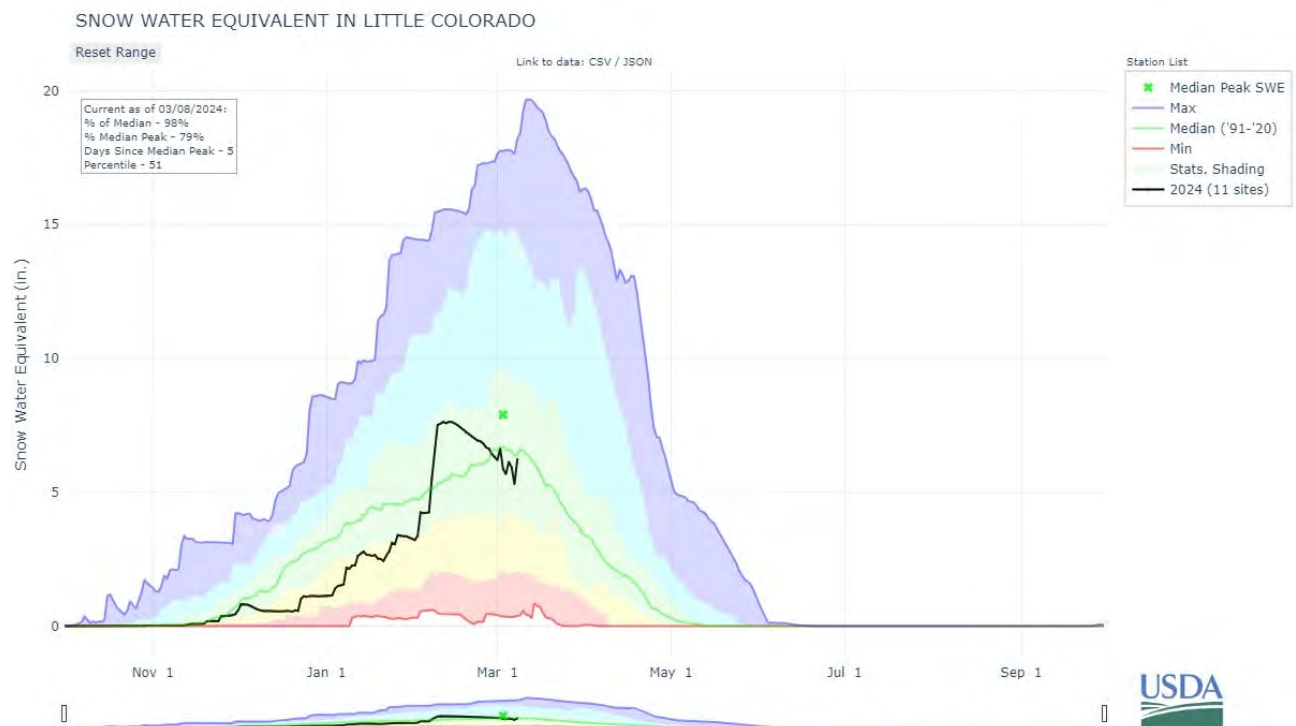
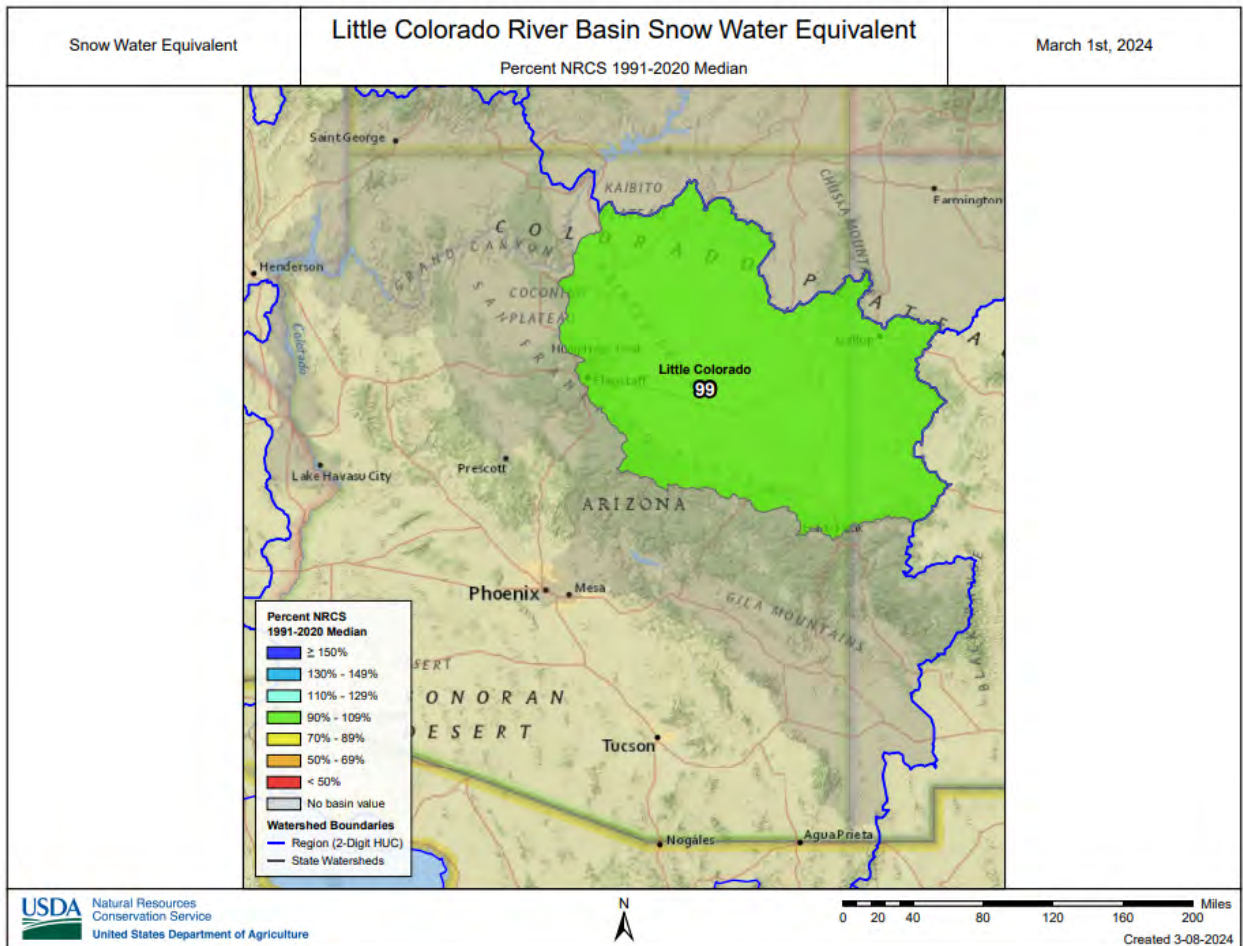
2) Forecasts are For unimpaired flows. Actual flow will be dependent On management of upstream reservoirs And diversions

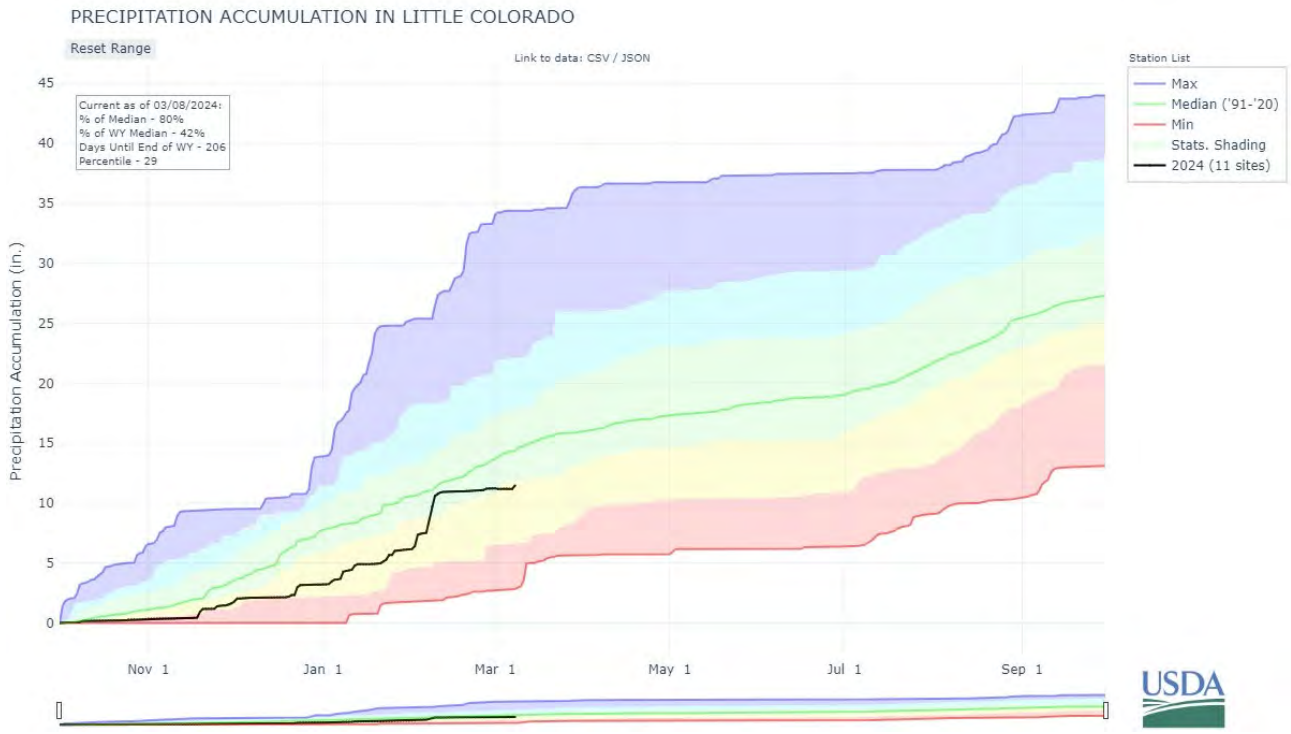
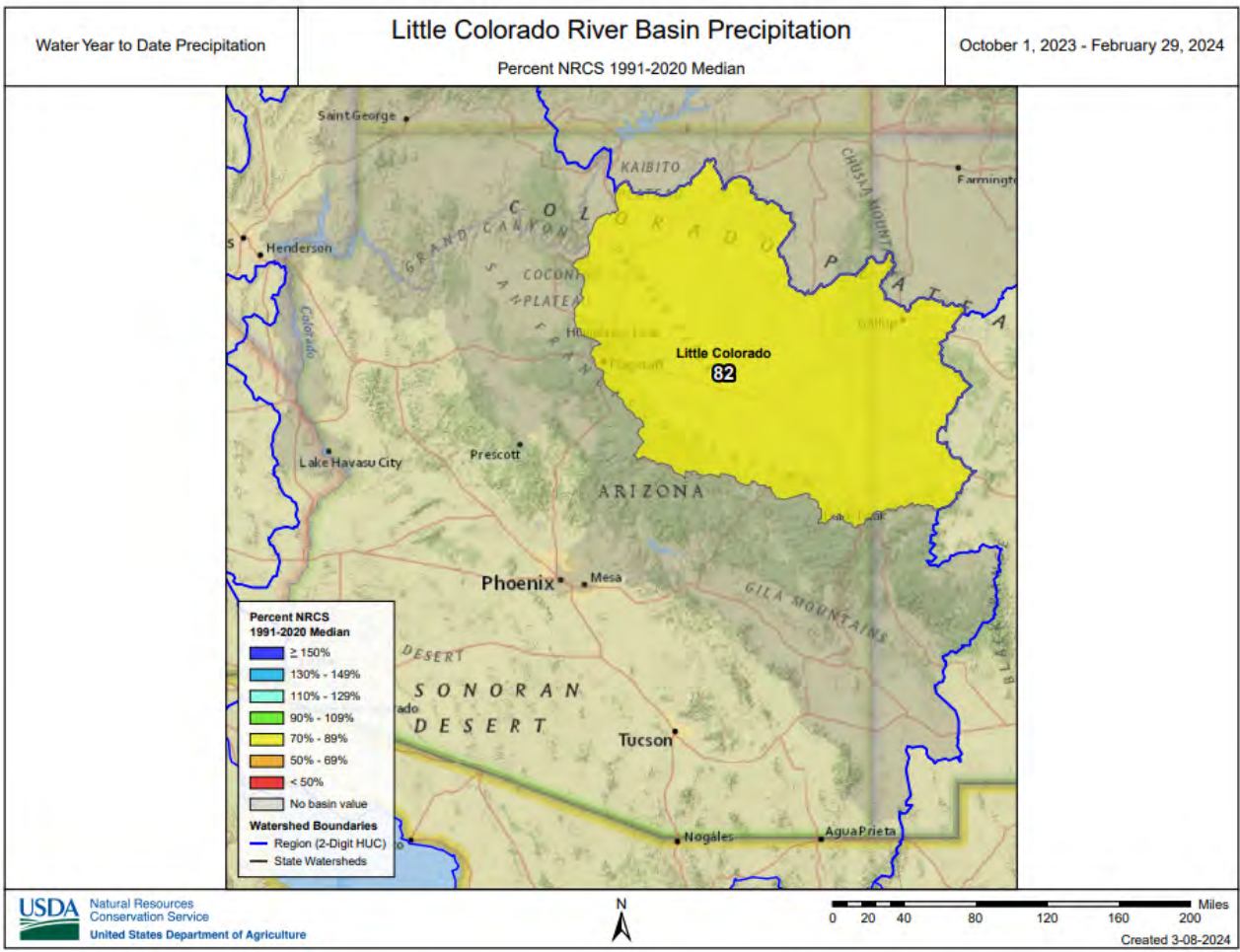
Reservoir Storage End of February, 2024	Current (KAF)	Last Year (KAF)	Median (KAF)	Capacity (KAF)
San Carlos Reservoir	356.6	395.5	165.3	875.0

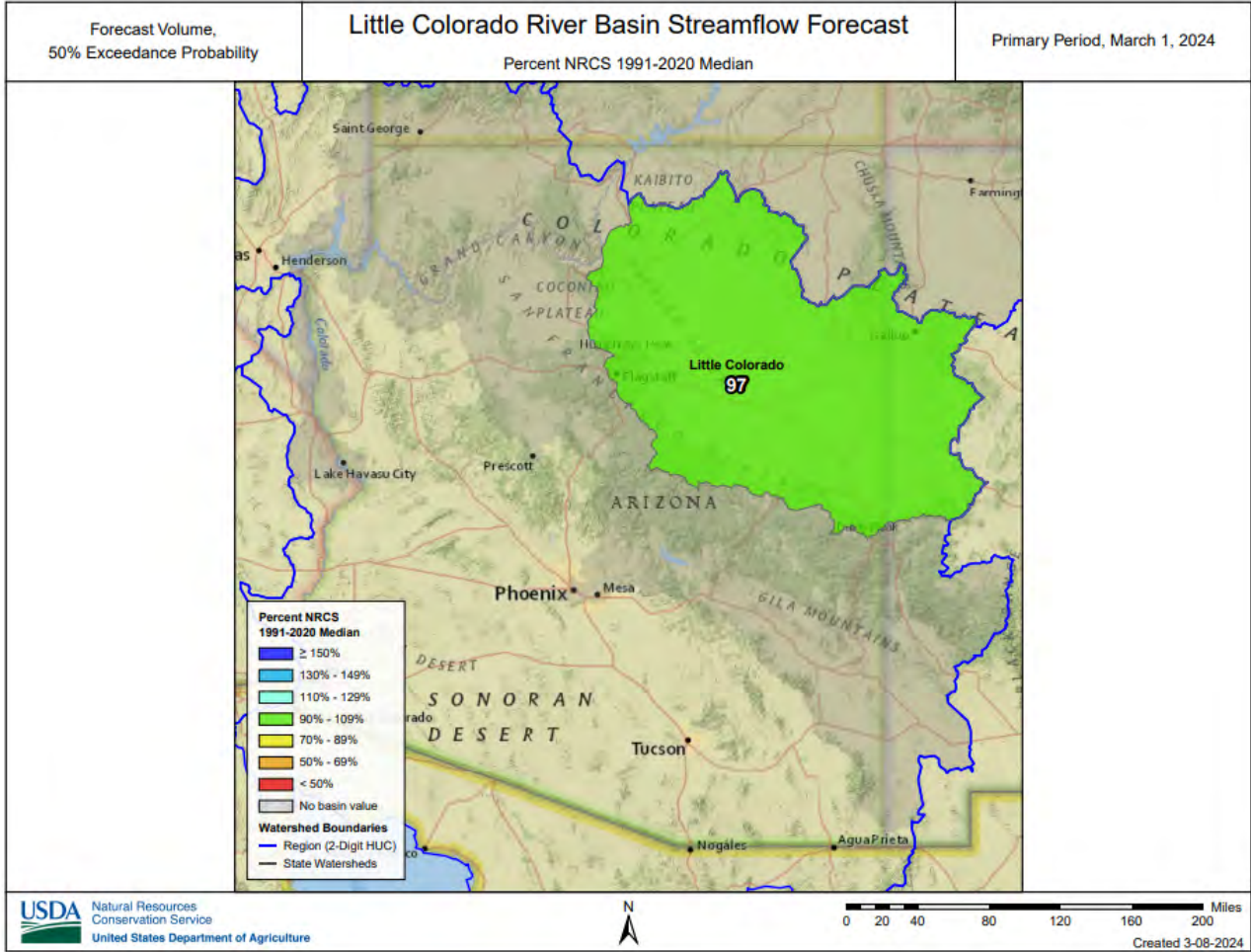
Watershed Snowpack Analysis March 1, 2024	# of Sites	% Median	Last Year % Median
Gila	11	112%	190%
San Francisco	9	118%	203%
Upper Gila	3	131%	118%

LITTLE COLORADO RIVER BASIN as of March 1, 2024

Median streamflow levels are forecast for the basin. In the Little Colorado River, above Lyman Lake, the forecast calls for 92% of median streamflow through June. At Blue Ridge (C.C. Cragin) Reservoir, inflow to the lake is forecast at 76% of median through May. Snow survey measurements show the snowpack for this basin to be at 99% of median.







Data Current As of: 3/6/2024 11:27:36 AM

Little Colorado Streamflow Forecasts - March 1, 2024

Forecast Exceedance Probabilities For Risk Assessment
Chance that actual volume will exceed forecast

Little Colorado	Forecast Period	90% (KAF)	70% (KAF)	50% (KAF)	% Median	30% (KAF)	10% (KAF)	30yr Median (KAF)
Zuni R ab Black Rock Reservoir	MAR-MAY	-0.56	-0.16	0.11	275%	0.43	1.02	0.04
Bowl Canyon Ck ab Asaayi Lake ²	MAR-MAY	0.47	0.81	1.05	128%	1.39	2	0.82
Blue Ridge Reservoir Inflow ²	MAR-MAY	0.82	2.7	7.5	76%	15.8	44	9.9
Rio Nutria nr Ramah ²	MAR-MAY	0.12	0.41	0.81	253%	1.32	2.7	0.32
Lake Mary Reservoir Inflow ²	MAR-MAY	2.1	3	3.9	156%	4.7	6.6	2.5
Little Colorado R ab Lyman Lake ²	MAR-JUN	0.71	2.7	4.6	92%	6.7	10.1	5

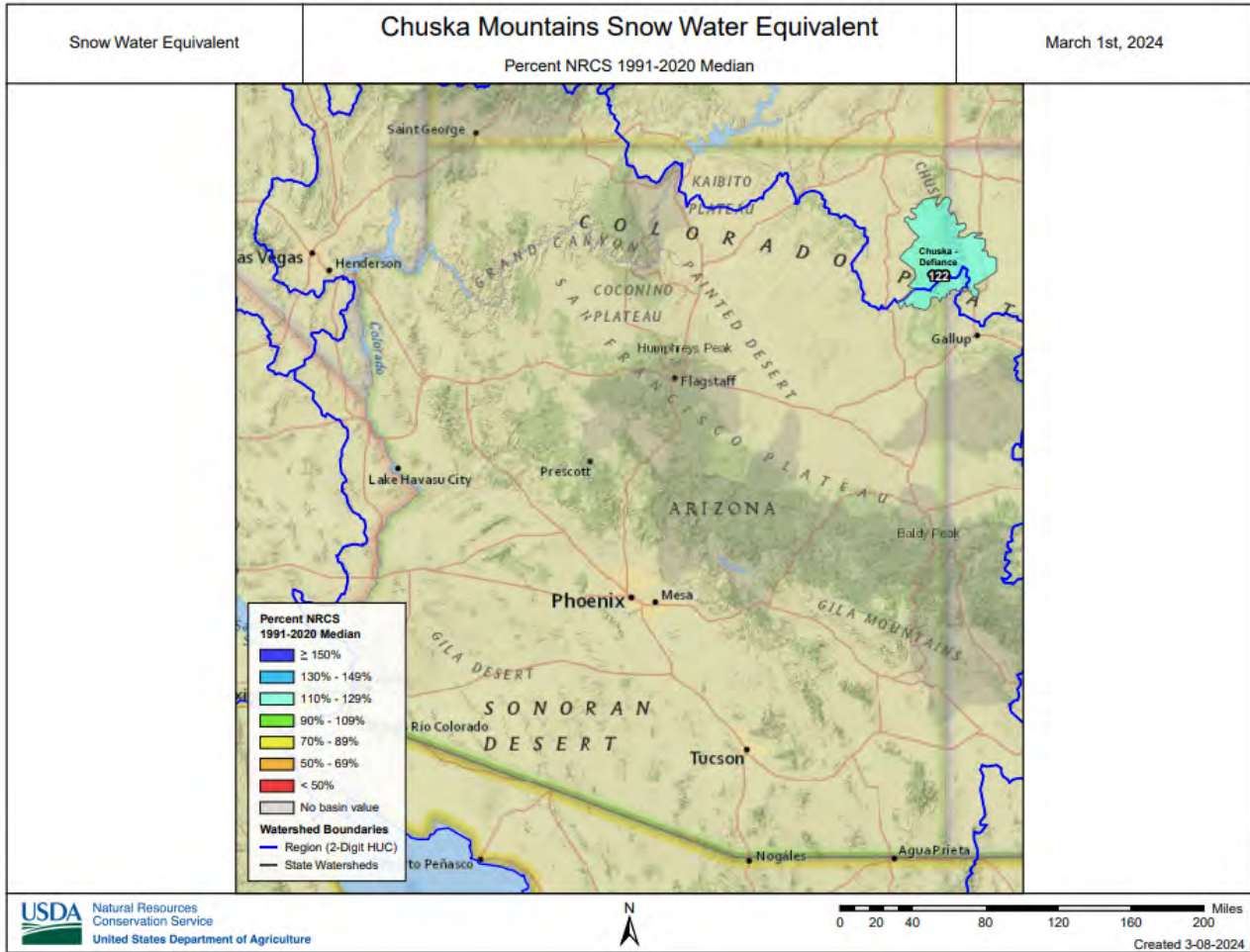
- 1) 90% And 10% exceedance probabilities are actually 95% And 5%
- 2) Forecasts are For unimpaired flows. Actual flow will be dependent On management of upstream reservoirs And diversions

Reservoir Storage End of February, 2024	Current (KAF)	Last Year (KAF)	Median (KAF)	Capacity (KAF)
Lyman Reservoir	12.2	7.6	8.0	30.0
Cragin Dam Reservoir	8.7	9.6	9.9	15.0

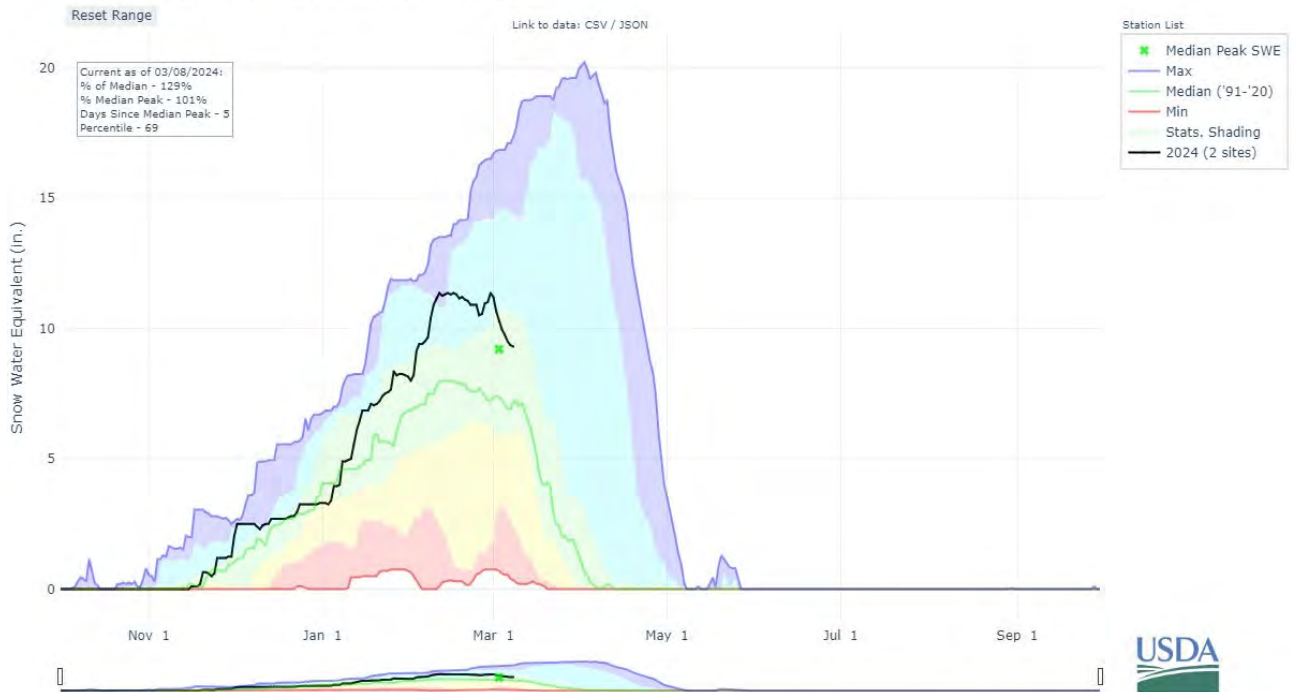
Watershed Snowpack Analysis March 1, 2024	# of Sites	% Median	Last Year % Median
Little Colorado	25	98%	198%
Canyon Diablo	8	97%	237%
Chevelon Canyon	2	73%	195%
Little Colorado Headwaters	6	95%	125%
Zuni	3	197%	275%

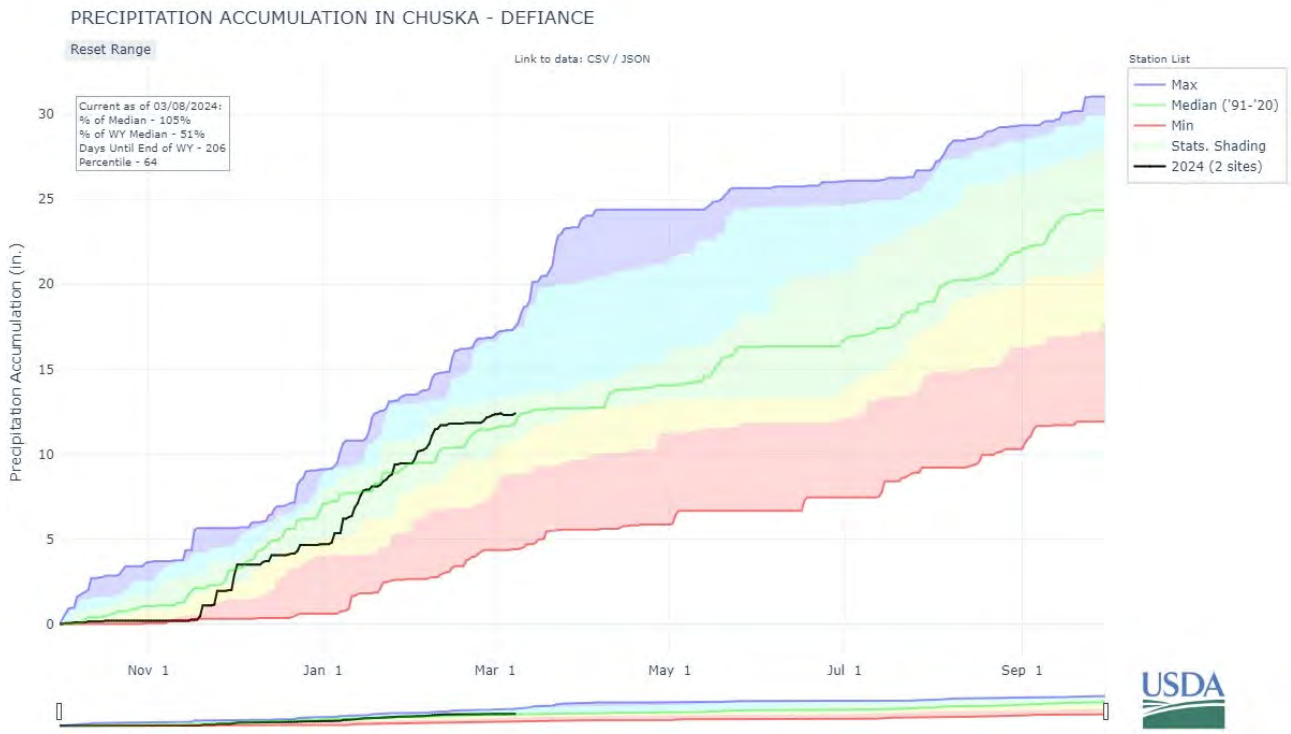
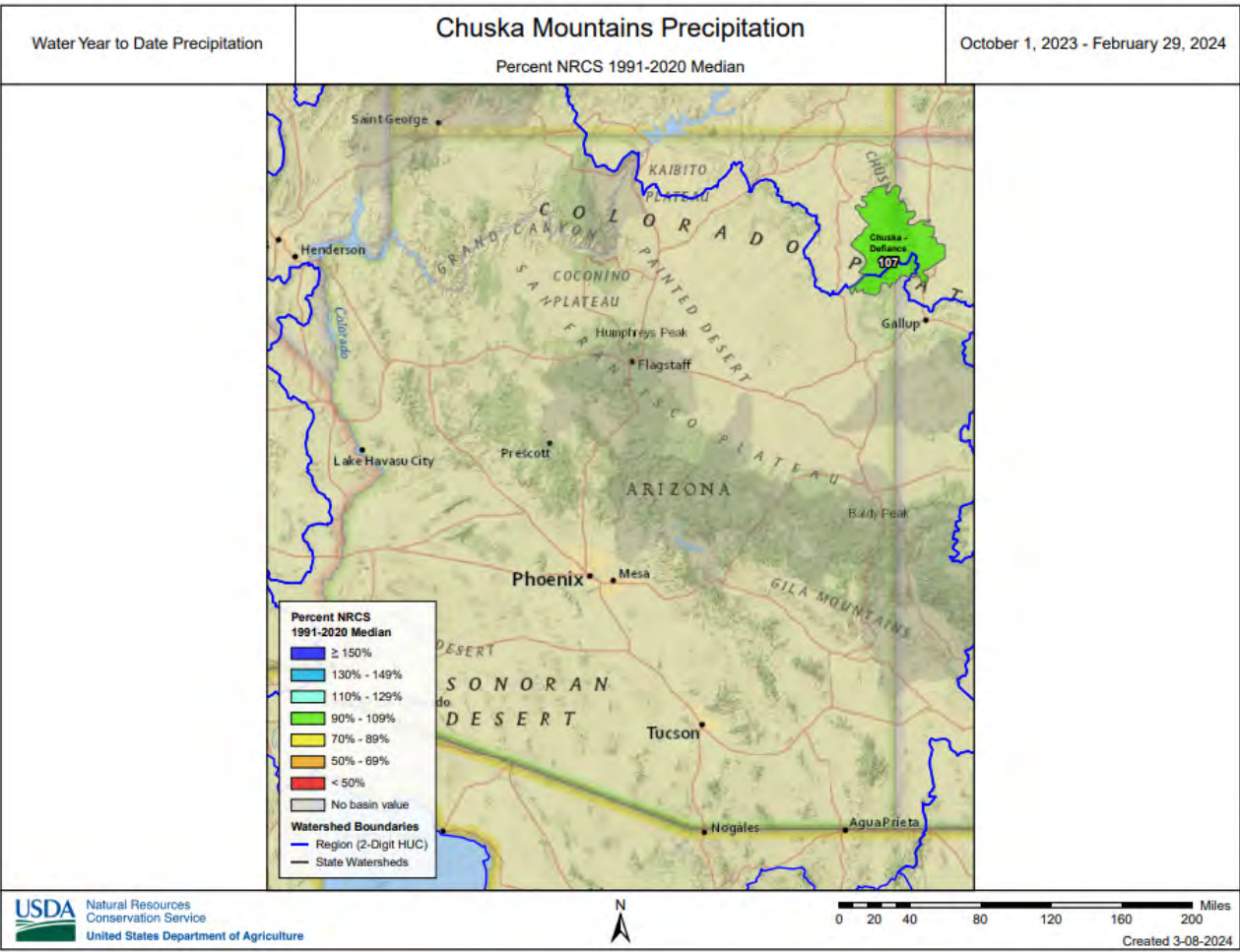
CHUSKA MOUNTAINS as of March 1, 2024

Well above median streamflow levels are forecast for Wheatfields Creek, Captain Tom Wash, and Bowl Canyon Creek. Snow survey measurements conducted by staff of the Navajo Nation Water Management Branch show the Chuska snowpack to be at 122% of median.



SNOW WATER EQUIVALENT IN CHUSKA - DEFIANCE





Forecast Volume,
50% Exceedance Probability

Chuska Mountains Basin Streamflow Forecast

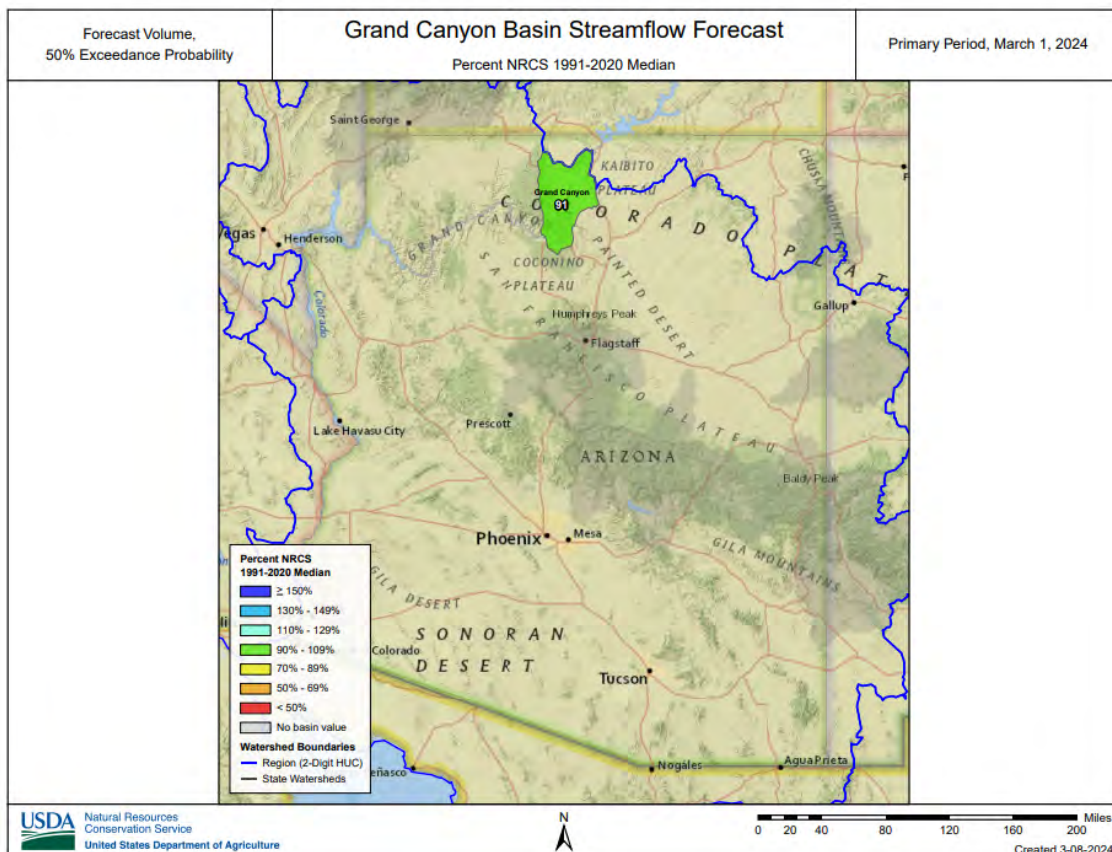
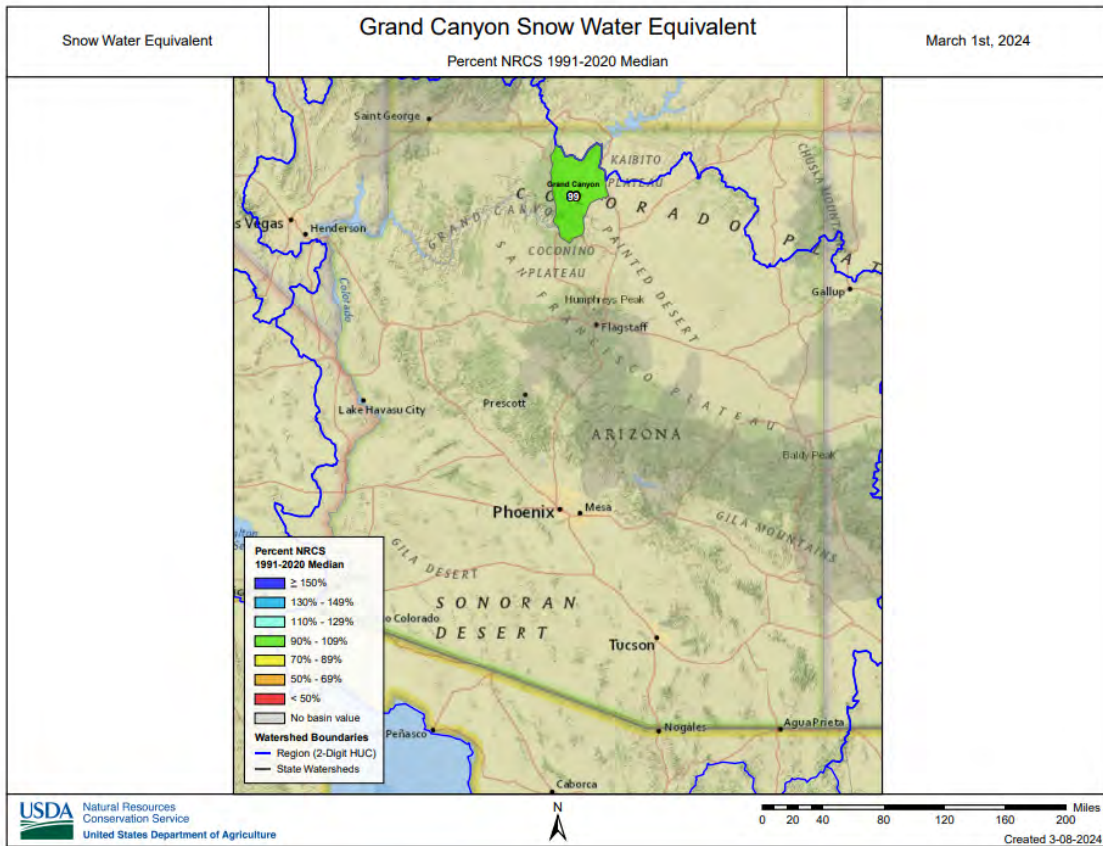
Primary Period, March 1, 2024

Percent NRCS 1991-2020 Median



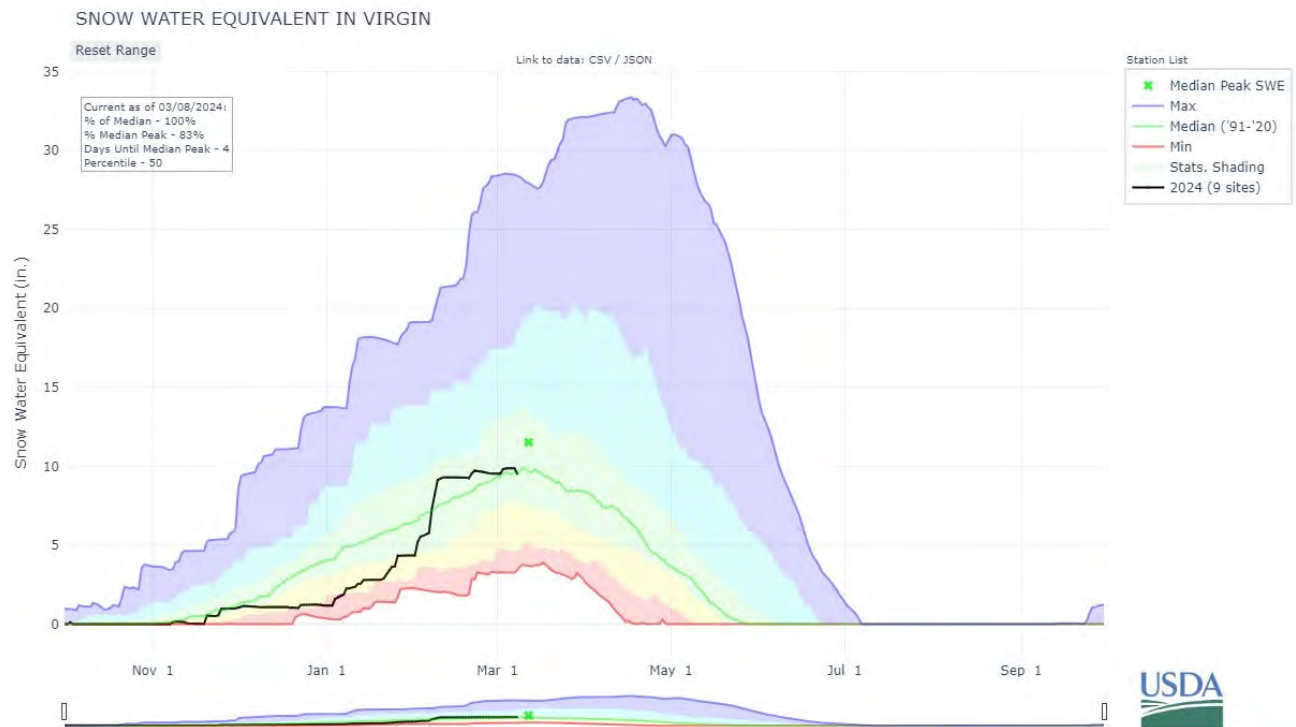
GRAND CANYON as of March 1, 2024

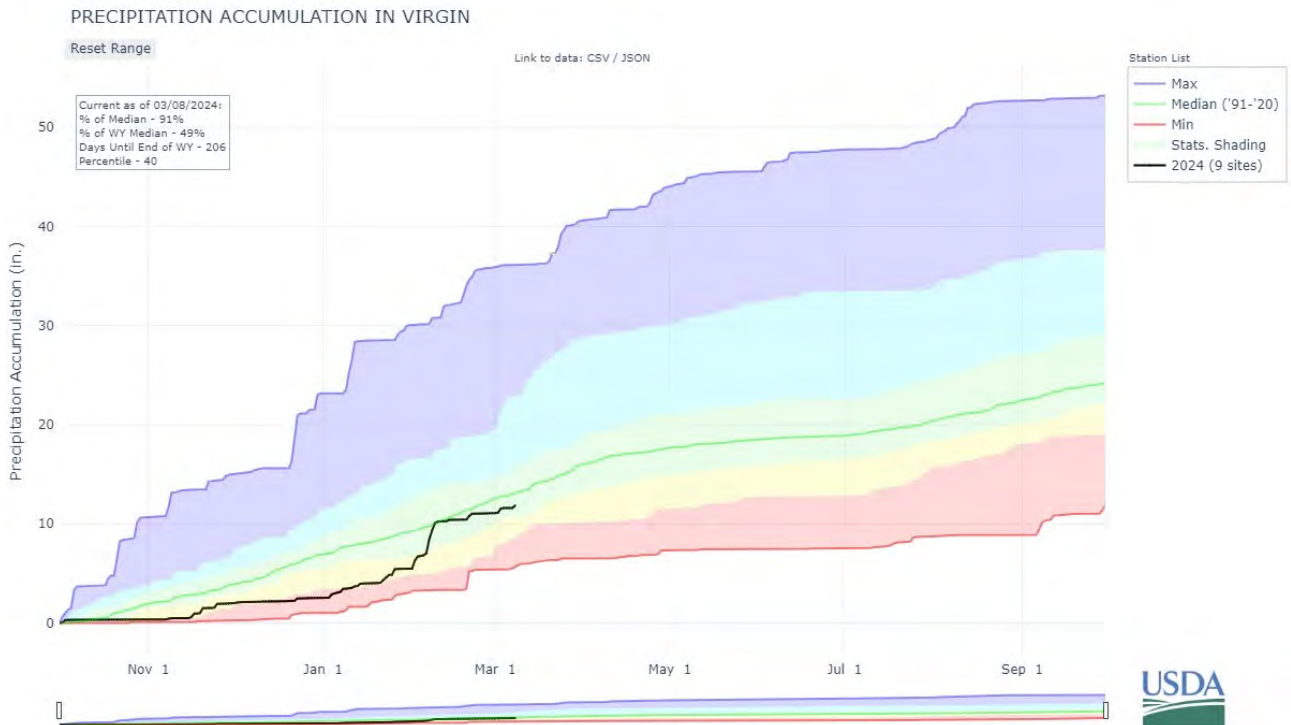
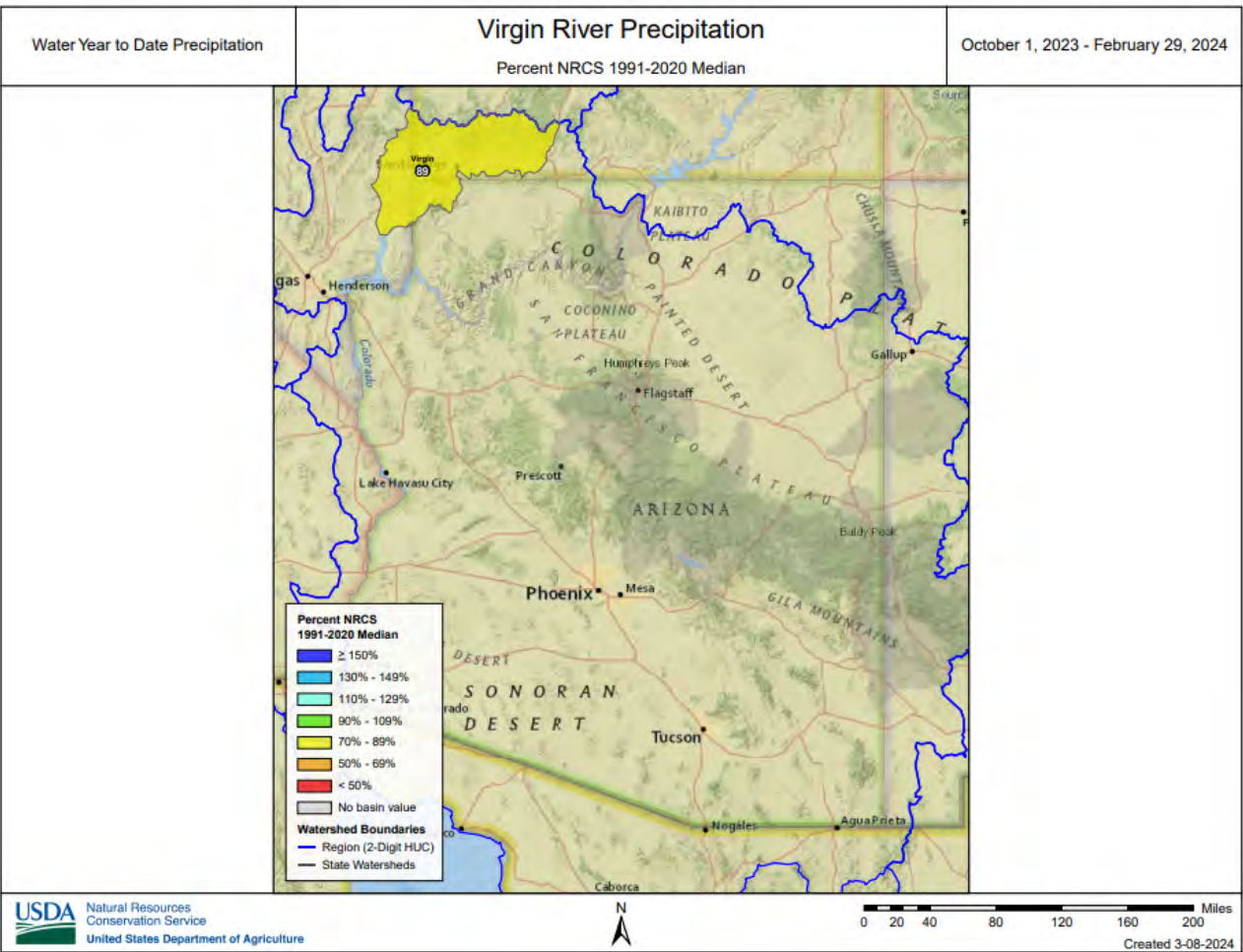
On the Colorado River, median inflow to Lake Powell is forecast at 91% of the 30-year median for the forecast period April-July. At the Grand Canyon, snow survey measurements completed by park rangers show snowpack to be at 99% of median.

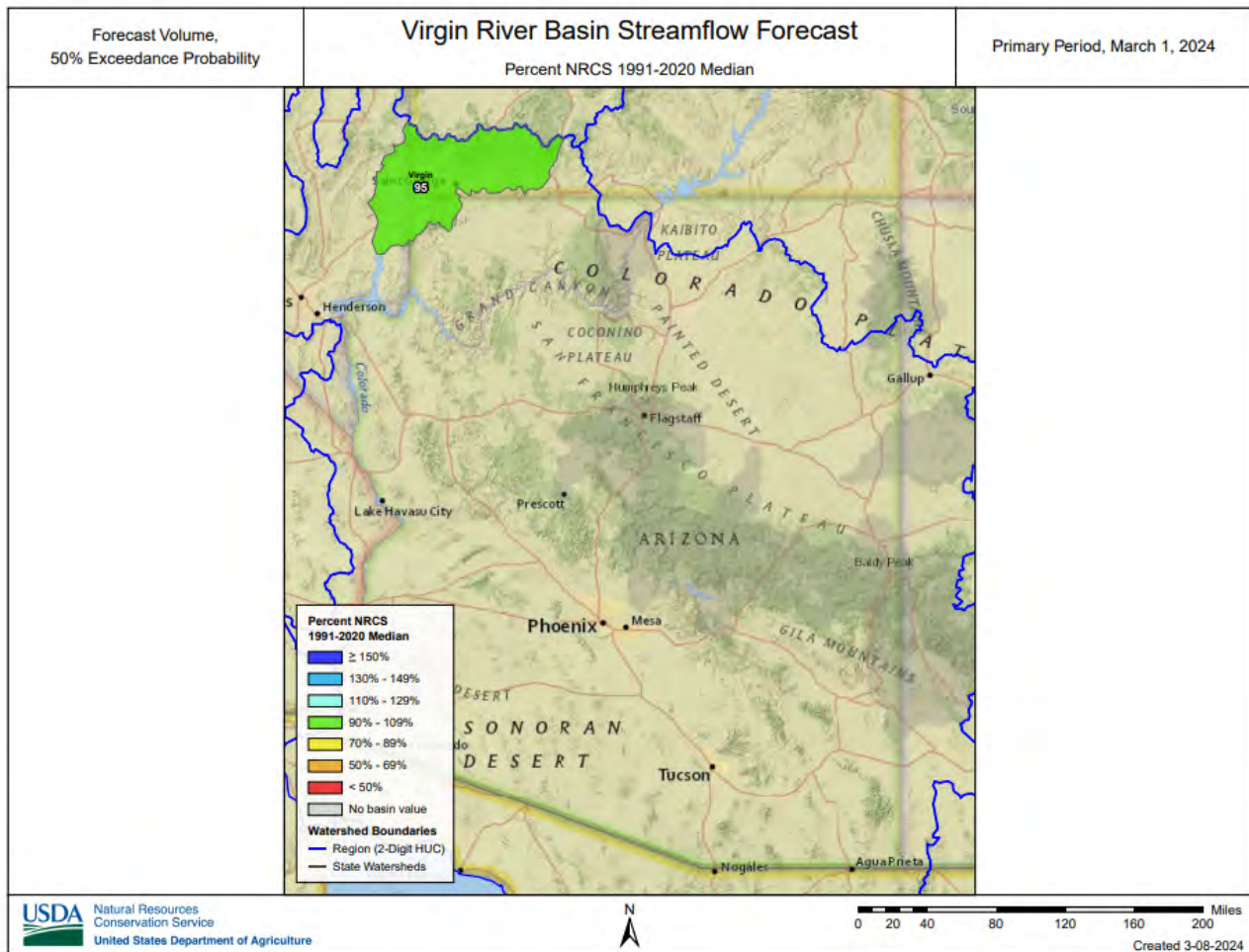


VIRGIN RIVER BASIN as of March 1, 2024

Median streamflow levels are forecast for the basin, ranging from 90% of median in the Virgin River near Hurricane, to 103% of median in the Virgin River at Littlefield. Snow survey measurements show the snowpack for this basin to be at 102% of median.







Lower Colorado Mainstem Streamflow Forecasts - March 1, 2024

Forecast Exceedance Probabilities For Risk Assessment
Chance that actual volume will exceed forecast

Lower Colorado Mainstem	Forecast Period	90% (KAF)	70% (KAF)	50% (KAF)	% Median	30% (KAF)	10% (KAF)	30yr Median (KAF)
Virgin R at Virgin ²	APR-JUL	16.3	28	37	103%	46	62	36
Virgin R at Littlefield ²	APR-JUL	11	18.1	30	91%	46	73	33
Virgin R nr Hurricane ²	APR-JUL	8.4	17.1	28	90%	40	60	31
Lake Powell Inflow ²								
Santa Clara R nr Pine Valley	APR-JUL	0.96	2.1	2.9	91%	3.8	6.2	3.2

1) 90% And 10% exceedance probabilities are actually 95% And 5%
 2) Forecasts are For unimpaired flows. Actual flow will be dependent On management of upstream reservoirs And diversions

Reservoir Storage End of February, 2024	Current (KAF)	Last Year (KAF)	Median (KAF)	Capacity (KAF)
Lake Mohave	1673.0	1699.0	1670.0	1810.0
Sand Hollow Reservoir	50.3	42.3		50.0
Gunlock	9.0	6.8	7.2	10.4
Kolob Reservoir	4.6	1.9		5.6
Lake Mead	9725.0	7469.0	15462.0	26159.0
Quail Creek	29.8	25.4	31.2	40.0
Lake Havasu	563.2	571.3	569.4	619.0

Watershed Snowpack Analysis March 1, 2024	# of Sites	% Median	Last Year % Median
Lower Colorado Mainstem	11	102%	226%
Grand Canyon	1	43%	914%
Virgin	9	102%	213%

Basinwide Summary: March 1, 2024
(Medians based On 1991-2020 reference period)

Snowpack Summary For March 1, 2024

Gila	Network	Elevation (ft)	Depth (in)	SWE (in)	Median (in)	% Median	Last Year SWE (in)	Last Year % Median
Beaver Head	SNOTEL	8076	1	0.5	1.2	42%	4.4	367%
Coronado Trail	SC	8350	6	1.4	0.4	350%	4.3	1075%
Coronado Trail	SNOTEL	8418	2	0.8	0.6	133%	5.0	833%
Frisco Divide	SNOTEL	8013	6	2.1	2.2	95%	4.7	214%
Hannagan Meadows	SNOTEL	9027	26	9.6	9.2	104%	10.5	114%
Lookout Mountain	SNOTEL	8509	1	0.4	0.1	400%	0.4	400%
Nutriosio	SC	8500	0	0.0	0.3	0%	1.3	433%
Nutriosio	SNOTEL	8571	0	0.0	0.1	0%	0.1	100%
Signal Peak	SNOTEL	8405	2	0.3	1.7	18%	0.1	6%
Silver Creek Divide	SNOTEL	9096	28	11.1	7.2	154%	10.1	140%
State Line	SC	8000	3	0.6	0.9	67%	4.5	500%
Basin Index						112%	190%	
# of sites						11	11	

San Francisco	Network	Elevation (ft)	Depth (in)	SWE (in)	Median (in)	% Median	Last Year SWE (in)	Last Year % Median
Beaver Head	SNOTEL	8076	1	0.5	1.2	42%	4.4	367%
Coronado Trail	SC	8350	6	1.4	0.4	350%	4.3	1075%
Coronado Trail	SNOTEL	8418	2	0.8	0.6	133%	5.0	833%
Frisco Divide	SNOTEL	8013	6	2.1	2.2	95%	4.7	214%
Hannagan Meadows	SNOTEL	9027	26	9.6	9.2	104%	10.5	114%
Nutriosio	SC	8500	0	0.0	0.3	0%	1.3	433%
Nutriosio	SNOTEL	8571	0	0.0	0.1	0%	0.1	100%
Silver Creek Divide	SNOTEL	9096	28	11.1	7.2	154%	10.1	140%
State Line	SC	8000	3	0.6	0.9	67%	4.5	500%
Basin Index						118%	203%	
# of sites						9	9	

Upper Gila	Network	Elevation (ft)	Depth (in)	SWE (in)	Median (in)	% Median	Last Year SWE (in)	Last Year % Median
Lookout Mountain	SNOTEL	8509	1	0.4	0.1	400%	0.4	400%
Signal Peak	SNOTEL	8405	2	0.3	1.7	18%	0.1	6%
Silver Creek Divide	SNOTEL	9096	28	11.1	7.2	154%	10.1	140%
Basin Index						131%	118%	
# of sites						3	3	

Salt	Network	Elevation (ft)	Depth (in)	SWE (in)	Median (in)	% Median	Last Year SWE (in)	Last Year % Median
Baldy	SNOTEL	9221	17	6.1	6.9	88%	9.3	135%
Beaver Head	SNOTEL	8076	1	0.5	1.2	42%	4.4	367%
Buck Spring	SC	7400	0	0.0	0.8	0%		
Coronado Trail	SC	8350	6	1.4	0.4	350%	4.3	1075%
Coronado Trail	SNOTEL	8418	2	0.8	0.6	133%	5.0	833%
Fort Apache	SC	9160	27	8.5	7.9	108%	9.7	123%
Hannagan Meadows	SNOTEL	9027	26	9.6	9.2	104%	10.5	114%
Hawley Lake	SNOTEL	8314	35	12.8			16.2	
Heber	SNOTEL	7654	9	4.2	4.0	105%	13.4	335%
Maverick Fork	SNOTEL	9220	16	6.2	8.0	78%	8.8	110%
Promontory	SNOTEL	7942	17	6.9	11.3	61%	16.4	145%
Wildcat	SNOTEL	7868	1	0.3	2.5	12%	5.5	220%

Workman Creek	SNOTEL	7032	0	0.0	3.1	0%	8.4	271%
Basin Index						81%		174%
	# of sites					11		11
Central Mogollon Rim	Network	Elevation (ft)	Depth (in)	SWE (in)	Median (in)	% Median	Last Year SWE (in)	Last Year % Median
Baker Butte	SNOTEL	7363	9	3.8	4.5	84%	10.9	242%
Baker Butte No. 2	SC	7700	34	9.9	9.0	110%	10.4	116%
Baker Butte Smt	SNOTEL	7752	36	12.5	10.5	119%	19.1	182%
Happy Jack	SC	7630			3.4		11.4	335%
Happy Jack	SNOTEL	7539	19	6.8	5.6	121%	14.8	264%
Heber	SNOTEL	7654	9	4.2	4.0	105%	13.4	335%
Promontory	SNOTEL	7942	17	6.9	11.3	61%	16.4	145%
Workman Creek	SNOTEL	7032	0	0.0	3.1	0%	8.4	271%
Basin Index						92%		195%
	# of sites					7		7
Upper Salt	Network	Elevation (ft)	Depth (in)	SWE (in)	Median (in)	% Median	Last Year SWE (in)	Last Year % Median
Baldy	SNOTEL	9221	17	6.1	6.9	88%	9.3	135%
Beaver Head	SNOTEL	8076	1	0.5	1.2	42%	4.4	367%
Buck Spring	SC	7400	0	0.0	0.8	0%		
Coronado Trail	SC	8350	6	1.4	0.4	350%	4.3	1075%
Coronado Trail	SNOTEL	8418	2	0.8	0.6	133%	5.0	833%
Fort Apache	SC	9160	27	8.5	7.9	108%	9.7	123%
Hannagan Meadows	SNOTEL	9027	26	9.6	9.2	104%	10.5	114%
Hawley Lake	SNOTEL	8314	35	12.8			16.2	
Maverick Fork	SNOTEL	9220	16	6.2	8.0	78%	8.8	110%
Wildcat	SNOTEL	7868	1	0.3	2.5	12%	5.5	220%
Basin Index						91%		157%
	# of sites					8		8
Verde	Network	Elevation (ft)	Depth (in)	SWE (in)	Median (in)	% Median	Last Year SWE (in)	Last Year % Median
Baker Butte	SNOTEL	7363	9	3.8	4.5	84%	10.9	242%
Baker Butte No. 2	SC	7700	34	9.9	9.0	110%	10.4	116%
Baker Butte Smt	SNOTEL	7752	36	12.5	10.5	119%	19.1	182%
Bar M	SNOTEL	6397	1	0.4			10.9	
Chalender	SC	7100			1.3		6.6	508%
Chalender	SNOTEL	7035	7	2.6	1.7	153%	9.4	553%
Fort Valley	SNOTEL	7371	1	0.2	0.4	50%	8.2	2050%
Fort Valley	SC	7350	4	1.6	1.2	133%	7.6	633%
Fry	SNOTEL	7236	18	7.7	7.1	108%	18.4	259%
Happy Jack	SC	7630			3.4		11.4	335%
Happy Jack	SNOTEL	7539	19	6.8	5.6	121%	14.8	264%
Mormon Mountain	SNOTEL	7500	11	4.9	4.4	111%	17.1	389%
Mormon Mountain Summit #2	SC	8470	28	9.0	9.8	92%	19.6	200%
Mormon Mtn Summit	SNOTEL	8462	24	7.2	7.5	96%	17.0	227%
Newman Park	SC	6750	3	1.3	1.4	93%	9.4	671%
Snow Bowl #2	SC	11200	53	12.0	13.7	88%	22.2	162%
White Horse Lake	SNOTEL	7203	3	0.9	2.8	32%	11.6	414%
Williams Ski Run	SC	7720	27	9.1	7.7	118%		
Basin Index						101%		246%
	# of sites					14		14

Upper Verde	Network	Elevation (ft)	Depth (in)	SWE (in)	Median (in)	% Median	Last Year SWE (in)	Last Year % Median
Bar M	SNOTEL	6397	1	0.4			10.9	
Chalender	SNOTEL	7035	7	2.6	1.7	153%	9.4	553%
Chalender	SC	7100			1.3		6.6	508%
Fort Valley	SNOTEL	7371	1	0.2	0.4	50%	8.2	2050%
Fort Valley	SC	7350	4	1.6	1.2	133%	7.6	633%
Fry	SNOTEL	7236	18	7.7	7.1	108%	18.4	259%
Happy Jack	SC	7630			3.4		11.4	335%
Happy Jack	SNOTEL	7539	19	6.8	5.6	121%	14.8	264%
Mormon Mountain	SNOTEL	7500	11	4.9	4.4	111%	17.1	389%
Mormon Mountain Summit #2	SC	8470	28	9.0	9.8	92%	19.6	200%
Mormon Mtn Summit	SNOTEL	8462	24	7.2	7.5	96%	17.0	227%
Newman Park	SC	6750	3	1.3	1.4	93%	9.4	671%
Snow Bowl #2	SC	11200	53	12.0	13.7	88%	22.2	162%
White Horse Lake	SNOTEL	7203	3	0.9	2.8	32%	11.6	414%
Williams Ski Run	SC	7720	27	9.1	7.7	118%		
Basin Index						97%		279%
# of sites						11		11

Little Colorado	Network	Elevation (ft)	Depth (in)	SWE (in)	Median (in)	% Median	Last Year SWE (in)	Last Year % Median
Baker Butte	SNOTEL	7363	9	3.8	4.5	84%	10.9	242%
Baker Butte No. 2	SC	7700	34	9.9	9.0	110%	10.4	116%
Baker Butte Smt	SNOTEL	7752	36	12.5	10.5	119%	19.1	182%
Baldy	SNOTEL	9221	17	6.1	6.9	88%	9.3	135%
Boon	SC	8140	16	5.5	3.0	183%	6.9	230%
Bowl Canyon	SC	8980	29	8.4	8.4	100%	13.2	157%
Buck Spring	SC	7400	0	0.0	0.8	0%		
Cheese Springs	SC	8700	20	6.3	5.2	121%	6.2	119%
Dan Valley	SC	7640	13	4.9	2.2	223%	4.7	214%
Fluted Rock	SC	7800	13	4.6	2.7	170%		
Fort Apache	SC	9160	27	8.5	7.9	108%	9.7	123%
Fort Valley	SNOTEL	7371	1	0.2	0.4	50%	8.2	2050%
Fort Valley	SC	7350	4	1.6	1.2	133%	7.6	633%
Grand Canyon	SC	7500	1	0.3	0.7	43%	6.4	914%
Heber	SNOTEL	7654	9	4.2	4.0	105%	13.4	335%
Lake Mary	SC	6930	2	1.2	2.2	55%	9.8	445%
Maverick Fork	SNOTEL	9220	16	6.2	8.0	78%	8.8	110%
Mcgaffey	SC	8120	4	1.6	0.9	178%	5.2	578%
Missionary Spring	SC	7940	0	0.0	3.4	0%	7.2	212%
Mormon Mountain	SNOTEL	7500	11	4.9	4.4	111%	17.1	389%
Mormon Mountain Summit #2	SC	8470	28	9.0	9.8	92%	19.6	200%
Mormon Mtn Summit	SNOTEL	8462	24	7.2	7.5	96%	17.0	227%
Nutriosio	SNOTEL	8571	0	0.0	0.1	0%	0.1	100%
Nutriosio	SC	8500	0	0.0	0.3	0%	1.3	433%
Promontory	SNOTEL	7942	17	6.9	11.3	61%	16.4	145%
Snow Bowl #2	SC	11200	53	12.0	13.7	88%	22.2	162%
Snowslide Canyon	SNOTEL	9744	46	16.2	14.8	109%	26.5	179%
Basin Index						98%		198%
# of sites						25		25

Canyon Diablo	Network	Elevation (ft)	Depth (in)	SWE (in)	Median (in)	% Median	Last Year SWE (in)	Last Year % Median
Fort Valley	SNOTEL	7371	1	0.2	0.4	50%	8.2	2050%
Fort Valley	SC	7350	4	1.6	1.2	133%	7.6	633%

Lake Mary	SC	6930	2	1.2	2.2	55%	9.8	445%
Mormon Mountain	SNOTEL	7500	11	4.9	4.4	111%	17.1	389%
Mormon Mountain Summit #2	SC	8470	28	9.0	9.8	92%	19.6	200%
Mormon Mtn Summit	SNOTEL	8462	24	7.2	7.5	96%	17.0	227%
Snow Bowl #2	SC	11200	53	12.0	13.7	88%	22.2	162%
Snowslide Canyon	SNOTEL	9744	46	16.2	14.8	109%	26.5	179%

Basin Index **97%** **237%**
of sites 8 8

Chavelon Canyon	Network	Elevation (ft)	Depth (in)	SWE (in)	Median (in)	% Median	Last Year SWE (in)	Last Year % Median
Heber	SNOTEL	7654	9	4.2	4.0	105%	13.4	335%
Promontory	SNOTEL	7942	17	6.9	11.3	61%	16.4	145%

Basin Index **73%** **195%**
of sites 2 2

Little Colorado Headwaters	Network	Elevation (ft)	Depth (in)	SWE (in)	Median (in)	% Median	Last Year SWE (in)	Last Year % Median
Baldy	SNOTEL	9221	17	6.1	6.9	88%	9.3	135%
Cheese Springs	SC	8700	20	6.3	5.2	121%	6.2	119%
Fort Apache	SC	9160	27	8.5	7.9	108%	9.7	123%
Maverick Fork	SNOTEL	9220	16	6.2	8.0	78%	8.8	110%
Nutriosos	SC	8500	0	0.0	0.3	0%	1.3	433%
Nutriosos	SNOTEL	8571	0	0.0	0.1	0%	0.1	100%

Basin Index **95%** **125%**
of sites 6 6

Zuni	Network	Elevation (ft)	Depth (in)	SWE (in)	Median (in)	% Median	Last Year SWE (in)	Last Year % Median
Boon	SC	8140	16	5.5	3.0	183%	6.9	230%
Dan Valley	SC	7640	13	4.9	2.2	223%	4.7	214%
McGaffey	SC	8120	4	1.6	0.9	178%	5.2	578%

Basin Index **197%** **275%**
of sites 3 3

Lower Colorado Mainstem	Network	Elevation (ft)	Depth (in)	SWE (in)	Median (in)	% Median	Last Year SWE (in)	Last Year % Median
Bright Angel	SC	8400	23	7.7	7.4	104%		
Chalender	SNOTEL	7035	7	2.6	1.7	153%	9.4	553%
Chalender	SC	7100			1.3		6.6	508%
Gardner Peak	SNOTEL	8322	30	10.0	10.1	99%	14.6	145%
Grand Canyon	SC	7500	1	0.3	0.7	43%	6.4	914%
Gutz Peak	SNOTEL	6763	25	10.3	7.4	139%	19.3	261%
Harris Flat	SNOTEL	7792	22	7.6	7.4	103%	15.4	208%
Kolob	SNOTEL	9263	49	15.0	17.0	88%	32.8	193%
Little Grassy	SNOTEL	6065	0	0.0	1.8	0%	10.6	589%
Long Flat	SNOTEL	7982	16	6.5	7.2	90%	14.6	203%
Long Valley Jct	SNOTEL	7465	14	5.5	4.6	120%	14.4	313%
Midway Valley	SNOTEL	9827	61	17.3	17.2	101%	34.5	201%
Webster Flat	SNOTEL	9203	40	13.5	11.4	118%	23.1	203%
Williams Ski Run	SC	7720	27	9.1	7.7	118%		

Basin Index **102%** **226%**
of sites 11 11

Chepeta	SNOTEL	10499	39	10.2	10.6	96%	13.8	130%
Clayton Springs	SNOTEL	10049	41	10.6	9.8	108%	14.6	149%
Clear Creek #1	SNOTEL	8975	56	15.2	13.0	117%	23.8	183%
Cochetopa Pass	SC	10000			3.9			
Cochetopa Pass	SNOTEL	10061	19	3.9	4.0	98%	4.3	108%
Columbine	SNOTEL	9167	65	21.2	18.9	112%	22.6	120%
Columbine Lodge	SC	9160	64	17.5	16.2	108%	20.1	124%
Columbine Pass	SNOTEL	9171	44	14.9	15.2	98%	31.1	205%
Columbus Basin	SNOTEL	10781	57	16.0	18.6	86%	24.0	129%
Copper Mountain	SNOTEL	10523	42	11.0	11.6	95%	11.6	100%
Corral	SNOTEL	8207	28	8.3			14.1	
Corral Creek	SC	9700	34	9.6	11.4	84%		
Cottonwood Pass	SNOLITE	11681	68					
Crested Butte	SC	8920	46	12.1	10.7	113%	14.6	136%
Crosho	SNOTEL	8973	43	11.4	10.0	114%	12.5	125%
Currant Creek	SNOTEL	7915	42	12.0	7.7	156%	15.2	197%
Daniels-Strawberry	SNOTEL	8008	48	16.3	12.1	135%	19.4	160%
Dills Camp	SNOTEL	9228	33	10.4	9.4	111%	14.8	157%
Divide Peak	SNOTEL	8730	55	15.6	15.2	103%	22.2	146%
Donkey Reservoir	SNOTEL	9799	27	6.2	5.8	107%	8.8	152%
Dry Lake	SNOTEL	8271	67	21.7	17.3	125%	25.7	149%
EF Blacks Fork GS	SNOTEL	9360	33	7.1	8.9	80%	10.7	120%
East Rim Divide	SNOTEL	7930	30	7.2	9.0	80%	9.3	103%
East Willow Creek	SNOTEL	8302	31	6.7	7.0	96%	16.5	236%
El Diente Peak	SNOTEL	10217	40	11.4	10.9	105%	17.3	159%
Elk River	SNOTEL	8739	48	14.8	15.1	98%	22.5	149%
Elkhart Park G.S.	SNOTEL	9400	31	7.7	9.6	80%	9.3	97%
Elkhead Divide	SNOTEL	8800	56	18.4			25.0	
Elliot Ridge	SNOTEL	10549	56	17.7	13.2	134%	21.5	163%
Fish Lake	SC	8818	22	4.8	6.0	80%	9.2	153%
Fish Lake Utah	SNOTEL	8798	25	7.6	8.1	94%	11.8	146%
Five Points Lake	SNOTEL	10943	49	13.8	13.6	101%	18.6	137%
Fluted Rock	SC	7800	13	4.6	2.7	170%		
Fool Creek	SNOTEL	11156	52	15.6			13.8	
Fremont Pass	SNOTEL	11326	50	11.7	12.5	94%	10.8	86%
G.B.R.C. Meadows	SC	9780	61	18.2	16.9	108%	23.5	139%
GBRC Meadows	SNOTEL	9858	55	17.0			23.4	
Gold Basin	SNOTEL	10076	49	13.4			23.6	
Gore Pass	SC	9400	41	11.7	9.0	130%	13.2	147%
Granby	SC	8600	30	7.3	7.1	103%	10.5	148%
Grizzly Peak	SNOTEL	11139	46	12.2	13.6	90%	12.7	93%
Gros Ventre Summit	SNOTEL	8750	40	8.3	9.4	88%	9.1	97%
Groundhog	SC	8940			9.0			
Gunsight Pass	SNOTEL	9820	39	9.7	10.4	93%	10.1	97%
Hagerman Tunnel	SC	11150			16.6			
Hams Fork	SNOTEL	7840	25	6.7	9.2	73%	11.8	128%
Haskins Creek	SC	8975	91	25.6	25.0	102%		
Henrys Fork	SNOLITE	10182	36					
Hewinta	SNOTEL	9500	40	9.8	8.0	123%	9.6	120%
Hickerson Park	SNOTEL	9122	34	7.3	6.1	120%	7.7	126%
Hidden Valley	SC	8480	31	9.8	6.4	153%	12.0	188%
High Lonesome	SNOTEL	10638	58	16.7			16.6	
Hole-in-Rock	SNOTEL	9168	30	6.6	5.7	116%	6.6	116%
Huntington Horse	SNOTEL	9652	60	20.1			29.4	
Huntington-Horseshoe	SC	9657	55	15.8	15.4	103%	24.8	161%
Idarado	SNOTEL	9812	34	8.7	10.4	84%	13.1	126%

Independence Pass	SC	10600	47	10.3	10.8	95%	10.6	98%
Independence Pass	SNOTEL	10598	47	11.6	13.0	89%	12.7	98%
Indian Creek	SNOTEL	9425	64	18.0	18.9	95%	21.3	113%
Ironton Park	SC	9600	35	9.8	11.4	86%	13.2	116%
Ivanhoe	SNOTEL	10541	51	13.8	11.6	119%	13.2	114%
Jones Pass	SNOTEL	10426	47	11.9	12.1	98%	11.6	96%
Jones Pass	SC	10400	42	12.0	13.4	90%	12.1	90%
Kelley R.S.	SNOTEL	8180	50	13.3	12.0	111%	15.9	133%
Kendall R.S.	SNOTEL	7740	30	7.4	9.8	76%	9.4	96%
Keystone	SC	9960	44	12.6	13.7	92%	18.2	133%
Kiln	SNOTEL	9624	40	10.4	10.0	104%	10.4	104%
Kings Cabin	SNOTEL	8728	32	8.5	7.6	112%	16.9	222%
Lake City	SC	10160	27	5.8	5.6	104%	5.9	105%
Lake Irene	SC	10700	46	11.6	14.2	82%	15.2	107%
Lake Irene	SNOTEL	10682	61	15.8	18.8	84%	21.5	114%
Lakefork #1	SNOTEL	10128	41	10.6	9.8	108%	12.7	130%
Lakefork #3	SNOTEL	8464	27	7.0	5.2	135%	10.3	198%
Lakefork Basin	SNOTEL	10885	61	16.3	16.0	102%	21.0	131%
Lapland	SC	9300	37	9.6	7.4	130%	8.3	112%
Larsen Creek	SC	9020	39	9.5	7.5	127%	9.4	125%
Larsen Creek	SNOTEL	9000	26	7.0	9.5	74%	8.7	92%
Lasal Mountain	SNOTEL	9578	34	9.9	10.2	97%	18.0	176%
Lasal Mountain-Lower	SC	8825	25	5.7	7.5	76%	14.6	195%
Lasal Mountain-Lower	SNOTEL	8783	26	8.0			14.0	
Lemon Reservoir	SC	8700	27	6.1	7.2	85%	13.1	182%
Little Snake River	SNOTEL	8928	79	23.8	21.8	109%	29.7	136%
Lizard Head Pass	SNOTEL	10193	42	11.7	11.8	99%	16.3	138%
Lone Cone	SNOTEL	9755	40	11.5	13.5	85%	18.7	139%
Lonesome Beaver	SNOTEL	9410	11	4.0			10.8	
Loomis Park	SNOTEL	8240	40	10.0	12.7	79%	12.0	94%
Lost Dog	SNOTEL	9327	59	18.3	19.2	95%	25.5	133%
Lostman	SC	10626	56	13.0	13.8	94%	12.2	88%
Lynx Pass	SNOTEL	8919	35	9.4	8.9	106%	10.9	122%
Mammoth-Cottonwood	SNOTEL	8709	54	17.0	15.0	113%	25.3	169%
Mancos	SNOTEL	10044	41	12.6	14.0	90%	16.4	117%
Mc Clure Pass	SNOTEL	8774	36	11.0	13.4	82%	20.7	154%
Mc Kenzie Gulch	SC	8500	30	6.7	5.8	116%	7.1	122%
Mccoy Park	SNOTEL	9516	45	11.8	11.6	102%	13.8	119%
Mesa Lakes	SC	10000	49	13.4	15.2	88%		
Mesa Lakes	SNOTEL	10168	45	12.0	12.3	98%	15.9	129%
Middle Fork Camp	SNOTEL	8969	42	10.0	9.5	105%	9.5	100%
Middle Fork Campground	SC	9000	42	10.7	8.8	122%	9.3	106%
Milner Pass	SC	9750	34	8.9	10.0	89%	13.3	133%
Mineral Creek	SNOTEL	10046	38	9.8	11.4	86%	13.4	118%
Missionary Spring	SC	7940	0	0.0	3.4	0%	7.2	212%
Molas Lake	SNOTEL	10631	44	11.0	14.6	75%	18.0	123%
Monarch Offshoot	SC	10500	48	12.8	10.6	121%	12.9	122%
Mosby Mtn.	SNOTEL	9553	40	9.3	8.5	109%	15.4	181%
Mt Baldy	SNOTEL	9524	59	19.0			28.4	
Mt Pennell	SNOTEL	9209	24	7.1			12.8	
Nast Lake	SC	8700	29	7.2	6.3	114%	6.4	102%
Nast Lake	SNOTEL	8731	31	9.6	6.7	143%	9.0	134%
Navajo Whiskey Ck	SNOTEL	9064	32	11.8	7.3	162%	15.3	210%
New Fork Lake	SNOTEL	8340	25	6.9	8.7	79%	8.6	99%
North Inlet Grand Lake	SC	9000	33	9.3	7.0	133%	6.6	94%
North Lost Trail	SNOTEL	9219	42	13.2	13.6	97%	19.7	145%

Old Battle	SNOTEL	9860	87	24.4	24.2	101%	31.7	131%
Overland Res.	SNOTEL	9893	28	7.7	10.0	77%	16.2	162%
Park Cone	SNOTEL	9621	37	9.7	8.2	118%	9.8	120%
Park Cone	SC	9600			7.5		9.9	132%
Park Reservoir	SNOTEL	9987	52	15.7	19.8	79%	32.1	162%
Phantom Valley	SNOTEL	9045	28	7.1	8.2	87%	10.0	122%
Pocket Creek	SC	9350	32	7.6	9.0	84%	10.8	120%
Pocket Creek	SNOTEL	9360					10.4	
Porphyry Creek	SC	10760	48	13.9	14.3	97%	13.6	95%
Porphyry Creek	SNOTEL	10788	51	14.8	12.2	121%	14.3	117%
Rabbit Ears	SNOTEL	9411	71	22.4	19.6	114%	24.1	123%
Ranch Creek	SC	9400	45	13.3	9.4	141%	11.0	117%
Red Mountain Pass	SNOTEL	11080	57	15.9	17.1	93%	21.7	127%
Red Pine Ridge	SNOTEL	8988	43	13.1	10.8	121%	15.8	146%
Rio Blanco	SC	8500	48	12.0	11.2	107%	14.6	130%
Ripple Creek	SNOTEL	10350	74	20.2	20.8	97%	26.6	128%
Rock Creek	SNOTEL	7886	30	8.0	6.5	123%	9.5	146%
Rowdy Creek	SC	8300	43	11.8	15.7	75%	15.3	97%
Sage Creek Basin	SNOTEL	7850	43	10.7	11.4	94%	21.2	186%
Sandstone RS	SNOTEL	8152	52	15.2	10.3	148%	19.1	185%
Sargents Mesa	SNOTEL	11499	33	8.0	9.2	87%	9.2	100%
Schofield Pass	SNOTEL	10653	75	22.4	24.2	93%	33.4	138%
Scotch Creek	SNOTEL	9195	35	10.4	10.0	104%	15.8	158%
Seeley Creek	SNOTEL	9904	36	10.5	10.0	105%	17.0	170%
Sharkstooth	SNOTEL	10747	47	13.7	15.2	90%	22.7	149%
Shrine Pass	SC	10700	51	13.8	14.2	97%	14.1	99%
Slumgullion	SNOTEL	11560	38	9.1	10.6	86%	10.1	95%
Snake River	SC	10000	29	7.7	6.9	112%	7.0	101%
Snider Basin	SNOTEL	8060	32	8.0	10.8	74%	11.1	103%
Spirit Lk	SNOTEL	10235	37	10.2	9.3	110%	14.8	159%
Spring Creek Divide	SNOTEL	9000	64	17.8	19.4	92%	20.5	106%
Spud Mountain	SNOTEL	10674	56	17.2	19.2	90%	27.3	142%
Steel Creek Park	SNOTEL	10158	45	12.2	11.3	108%	14.6	129%
Stillwater Creek	SNOTEL	8880	23	6.1			8.3	
Strawberry Divide	SNOTEL	8123	54	17.8	12.1	147%	16.9	140%
Stump Lakes	SNOTEL	11248	51	14.2	13.8	103%	20.7	150%
Summit Ranch	SNOTEL	9371	36	9.3	8.8	106%	10.2	116%
Sunflower Flat	SNOTEL	10018	32	9.2			17.0	
Telluride	SC	8800	27	6.7	7.5	89%	8.0	107%
Tennessee Pass #2	SC	10280	36	7.8	9.5	82%	8.7	92%
Timberline	SNOTEL	8736	32	9.5	8.4	113%	17.5	208%
Tower	SNOTEL	10620	103	33.2	35.2	94%	41.1	117%
Trapper Lake	SNOTEL	9759	29	8.4			6.4	
Trial Lake	SNOTEL	9992	77	20.1	17.5	115%	25.5	146%
Trial Lake	SC	9953	75	21.0	19.4	108%	21.8	112%
Triple Peak	SNOTEL	8500	67	17.3	19.4	89%	19.3	99%
Trout Creek	SNOTEL	9518	30	7.3	7.2	101%	13.1	182%
Trout Lake #2	SC	9780	28	6.6	9.6	69%		
Tsaile Canyon #1	SC	8160	25	8.4	5.9	142%	12.6	214%
Tsaile Canyon #3	SC	8920	27	8.4	8.6	98%	14.7	171%
Upper Joes Valley	SNOTEL	8596	32	9.6			12.4	
Upper San Juan	SNOTEL	10140	65	19.8	23.9	83%	30.9	129%
Upper San Juan	SC	10200			24.2		31.3	129%
Upper Taylor	SNOTEL	10717	42	11.5	10.4	111%	15.8	152%
Vail Mountain	SNOTEL	10310	49	15.8	14.0	113%	16.3	116%
Vallecito	SNOTEL	10782	46	12.2	13.0	94%	18.6	143%

Vasquez	SC	9600	39	10.8	10.4	104%	9.1	88%
Wager Gulch	SNOTEL	11132	29	7.0			8.8	
Weminuche Creek	SNOTEL	10749	49	14.0	14.7	95%	21.4	146%
Whiskey Creek	SC	9050	35	11.0	8.8	125%	18.0	205%
Whiskey Park	SNOTEL	9020	75	25.0	21.4	117%	31.5	147%
White River #1	SNOTEL	8641	42	12.5	9.4	133%	14.8	157%
Widtsoe #3	SNOTEL	9640	38	11.0	8.6	128%	14.0	163%
Wilbur Bench	SNOTEL	9171	39	10.5	8.8	119%	15.7	178%
Willow Creek Pass	SC	9540	42	9.1	10.5	87%	12.4	118%
Willow Creek Pass	SNOTEL	9523	41	10.1	10.6	95%	13.3	125%
Wolf Creek Peak	SNOTEL	9796	64	17.0			26.0	
Wolf Creek Summit	SNOTEL	10957	68	21.4	24.4	88%	32.6	134%
Wrigley Creek	SNOTEL	9327	31	7.6			12.8	
Wurtz Lower	SC	10690	42	10.4	12.4	84%		
Yampa View	SC	8200	53	14.7	13.1	112%	18.3	140%
Basin Index						102%		132%
# of sites						177		177

Chuska - Defiance	Network	Elevation (ft)	Depth (in)	SWE (in)	Median (in)	% Median	Last Year SWE (in)	Last Year % Median
Beaver Spring	SNOTEL	9255	29	10.6	7.4	143%	13.8	186%
Beaver Spring	SC	9220	30	9.4	8.4	112%		
Bowl Canyon	SC	8980	29	8.4	8.4	100%	13.2	157%
Fluted Rock	SC	7800	13	4.6	2.7	170%		
Hidden Valley	SC	8480	31	9.8	6.4	153%	12.0	188%
Missionary Spring	SC	7940	0	0.0	3.4	0%	7.2	212%
Navajo Whiskey Ck	SNOTEL	9064	32	11.8	7.3	162%	15.3	210%
Tsaile Canyon #1	SC	8160	25	8.4	5.9	142%	12.6	214%
Tsaile Canyon #3	SC	8920	27	8.4	8.6	98%	14.7	171%
Whiskey Creek	SC	9050	35	11.0	8.8	125%	18.0	205%
Basin Index						122%		190%
# of sites						8		8