



Natural
Resources
Conservation
Service

Arizona

Basin Outlook Report

February 15, 2024



Issued by

Terry Cosby
Chief
Natural Resources Conservation Service
U.S. Department of Agriculture

Released by

Keisha L. Tatem
State Conservationist
Natural Resources Conservation Service
Phoenix, Arizona

Basin Outlook Reports And Federal – State – Private Cooperative Snow Surveys

How forecasts are made

Most of the annual streamflow in Arizona originates as snowfall that has accumulated in the mountains during the winter and early spring. As the snowpack accumulates, hydrologists estimate the runoff that will occur when it melts. Measurements of snow water equivalent at selected manual snow courses and automated Snow Telemetry (SNOTEL) sites, along with precipitation and streamflow values, are used in statistical and simulation models to prepare runoff forecasts. These forecasts are coordinated between hydrologists in the Natural Resources Conservation Service (NRCS) the National Weather Service, and the Salt River Project.

Forecasts of any kind are not perfect. Streamflow forecast uncertainty arises from three primary sources: (1) uncertainty of future weather conditions, (2) uncertainty in the forecasting procedure, and (3) errors in the data. The forecast, therefore, must be interpreted not as a single value but rather as a range of values with specific probabilities of occurrence. The middle of the range is expressed by the 50% exceedance probability forecast, for which there is a 50% chance that the actual flow will be above, and a 50% chance that the actual flow will be below, this value. To describe the expected range around this 50% value, four other forecasts are provided, two smaller values (90% and 70% exceedance probability) and two larger values (30%, and 10% exceedance probability). For example, there is a 90% chance that the actual flow will be more than the 90% exceedance probability forecast.

The wider the spread among these values, the more uncertain the forecast. As the season progresses, forecasts become more accurate, primarily because a greater portion of the future weather conditions become known. This is reflected by a narrowing of the range around the 50% exceedance probability forecast. Users should take this uncertainty into consideration when making operational decisions by selecting forecasts corresponding to the level of risk they are willing to assume about the amount of water to be expected. If users anticipate receiving a lesser supply of water, or are concerned about having an adequate water supply, they may want to base their decisions on the 90% or 70% exceedance probability forecasts. On the other hand, if users anticipate receiving too much water, or are concerned about the threat of flooding, they may want to base their decisions on the 30% or 10% exceedance probability forecasts. Regardless of the forecast value users choose, they should be prepared to deal with either more or less water.



For more water supply and resource management information, contact:

Travis Kolling
Water Supply Specialist
230 N. First Ave., Suite 509
Phoenix, AZ 85003-1706
Phone: (602) 280-8834
Email: travis.kolling@az.usda.gov

The United States Department of Agriculture (USDA) prohibits discrimination in its programs on the basis of race, color, national origin, sex, religion, age, disability, political beliefs and marital or familial status. (Not all prohibited bases apply to all programs.) Persons with disabilities who require alternative means for communication of program information (Braille, large print, audiotape, etc.) should contact USDA's TARGET Center at 202-720-2600 (voice and TDD).

To file a complaint, write the Secretary of Agriculture, U.S. Department of Agriculture, Washington, D.C., 20250, or call 1-800-245-6340 (voice) or (202) 720-1127 (TDD). USDA is an equal employment opportunity employer.

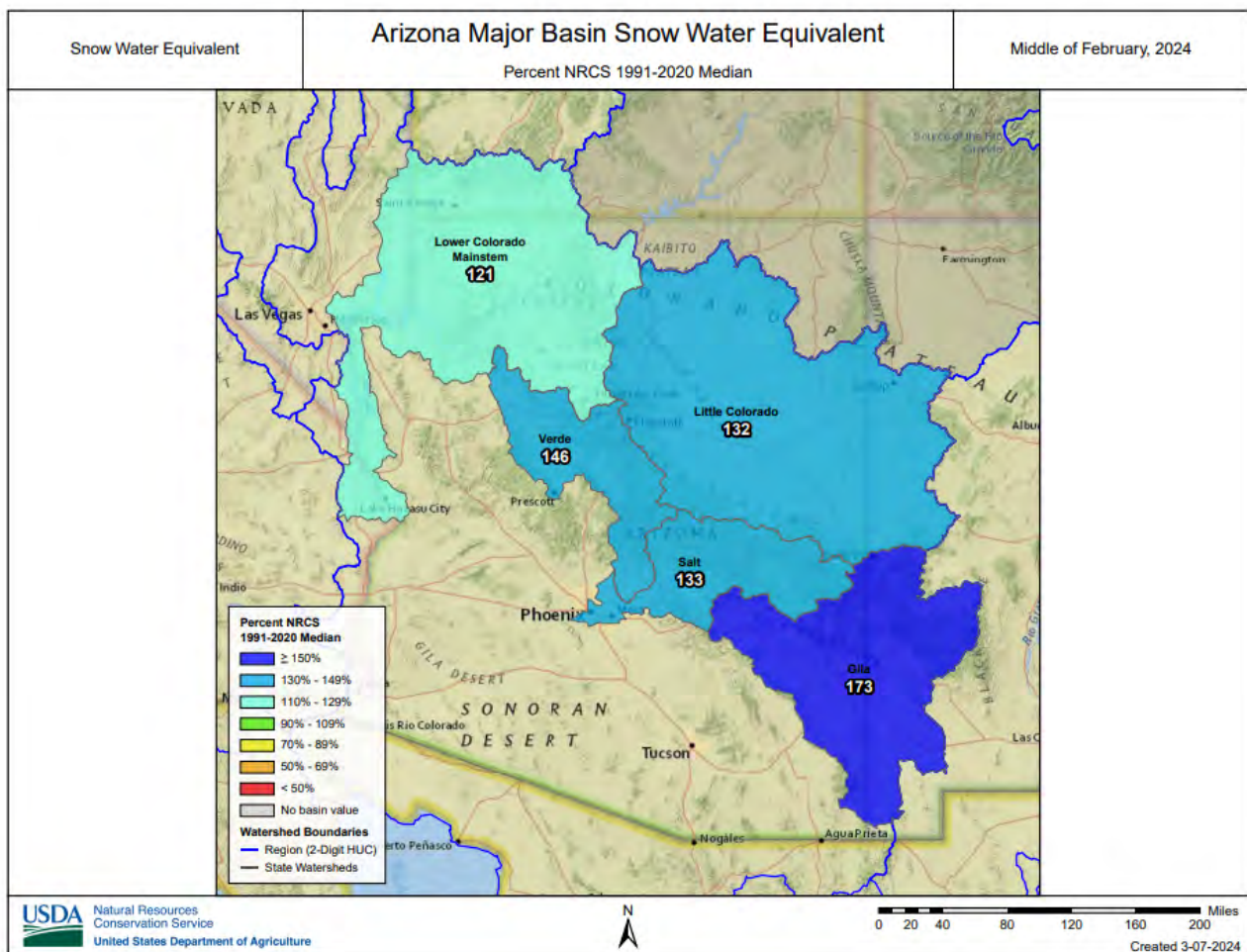
ARIZONA Basin Outlook Report as of February 15, 2024

SUMMARY

As of February 15, snowpack is at well above median levels throughout the major basins of the state. Precipitation for the first half of February was well above median in the major river basins. The Salt and Verde River reservoir system stands at 83 percent of capacity, while San Carlos Reservoir is at 40 percent of capacity. The forecast calls for median to well above median runoff in the major basins for the spring runoff period.

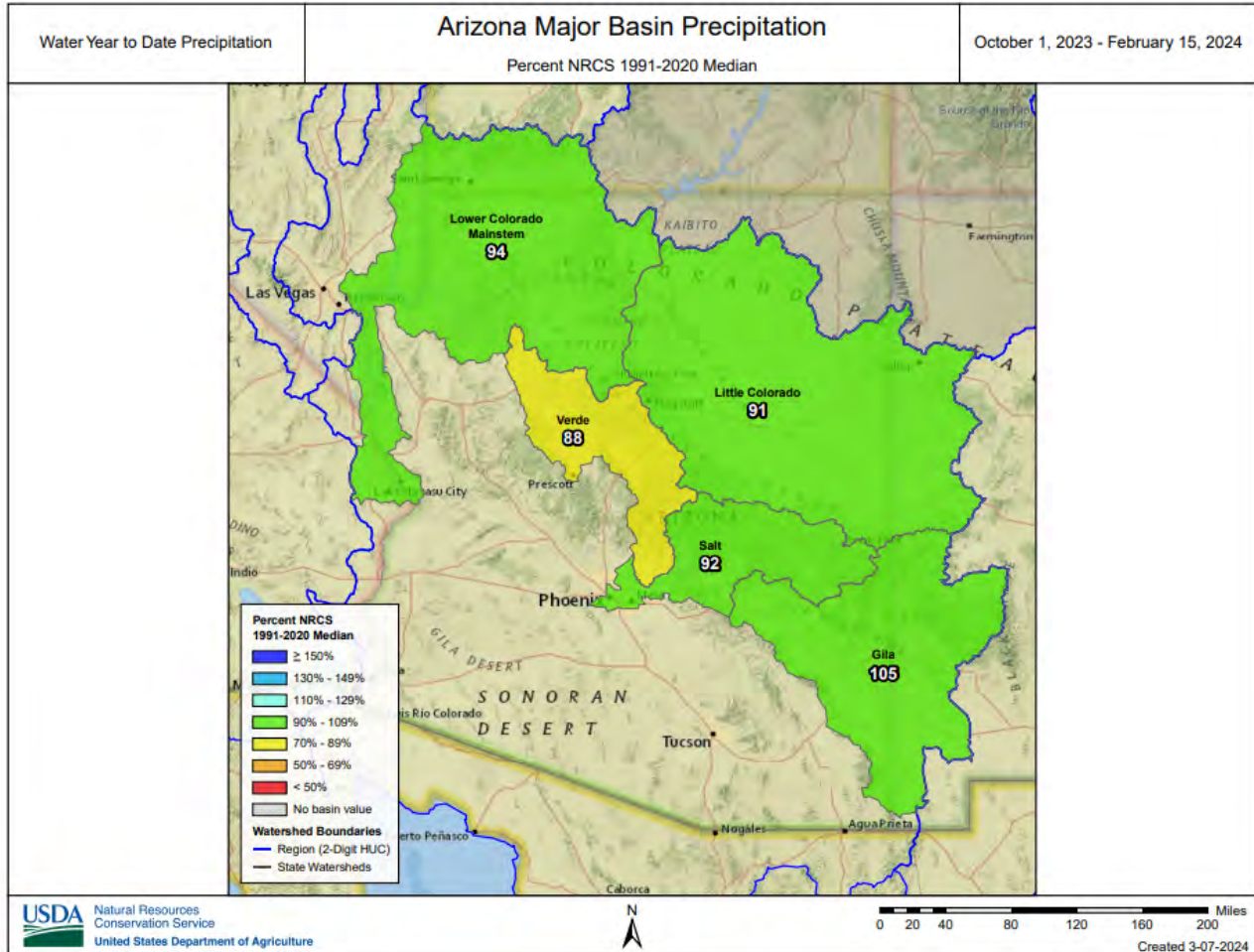
SNOWPACK

Snow water equivalent in the state's major river basins are well above median levels, ranging from 132 percent of median in the Little Colorado River Basin to 173 percent of median in the Gila River Basin.



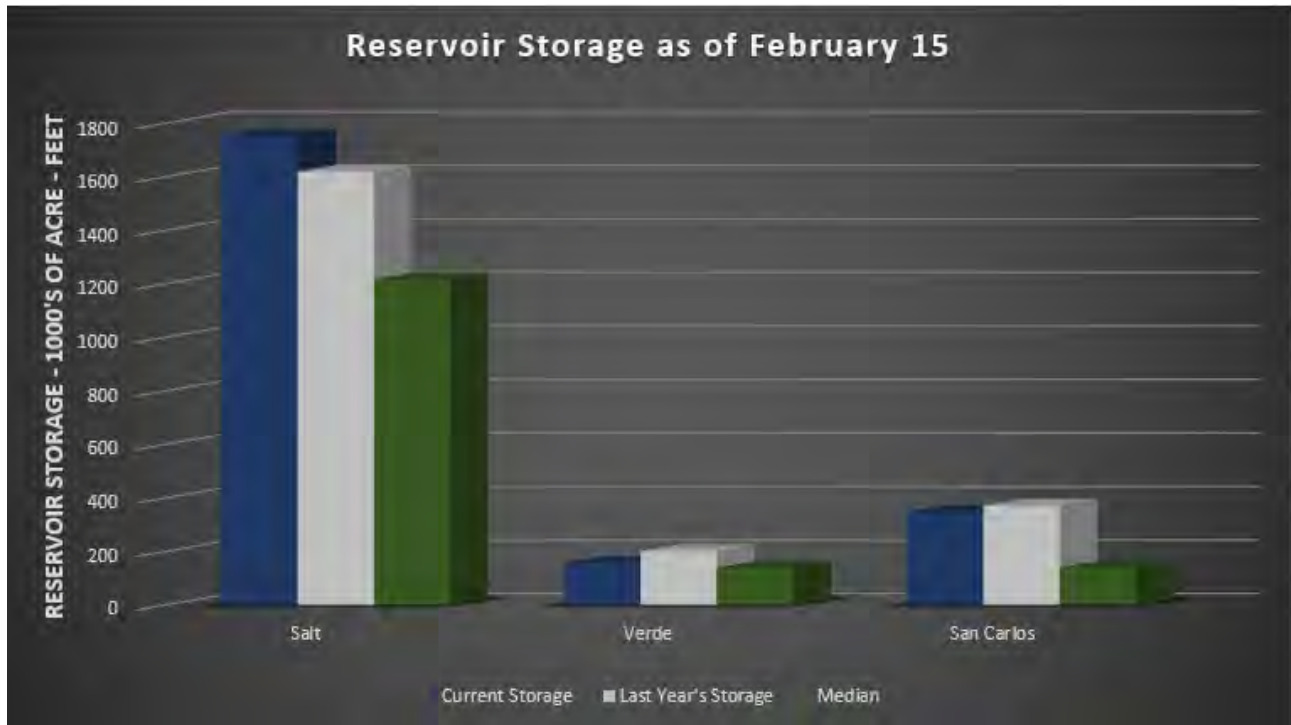
PRECIPITATION

Mountain data from NRCS SNOTEL sites and NWS Cooperator gages show that precipitation for the first half of February was well above median in the major river basins, while cumulative precipitation since October 1 ranged from below median to median levels throughout the state.



RESERVOIR STORAGE

As of February 15, the Salt and Verde River reservoir system stands at 83 percent of capacity. San Carlos Reservoir is currently at 40 percent of capacity.

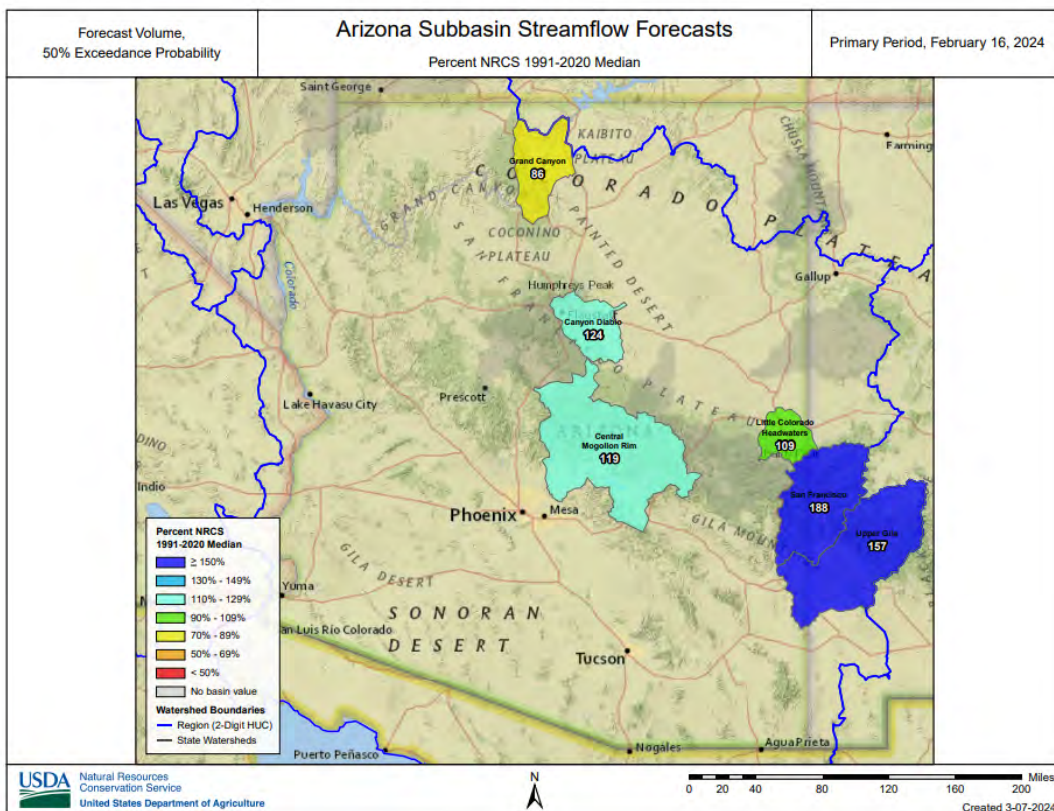
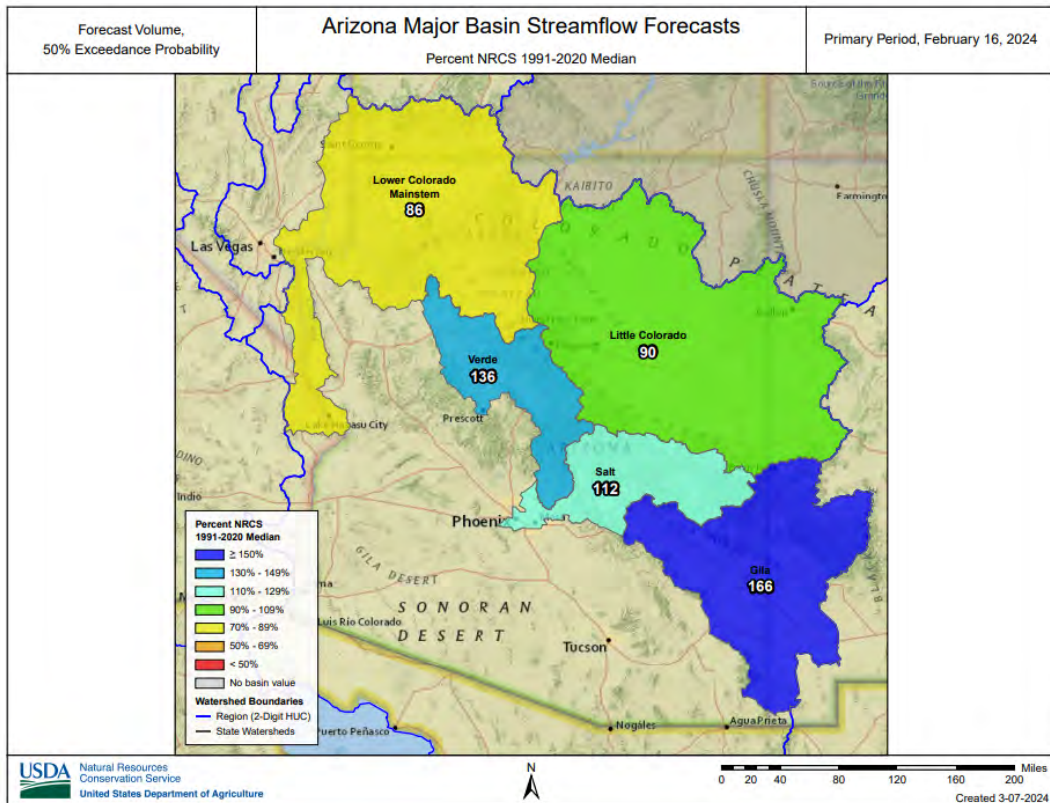


Key storage volumes displayed in thousands of acre-feet (x1000):

<u>Reservoir</u>	<u>Current Storage</u>	<u>Last Year Storage</u>	<u>30-Year Median</u>	<u>Storage Capacity</u>
Salt River System	1754.6	1620.0	1217.0	2025.8
Verde River System	158.0	201.8	139.7	287.4
San Carlos Reservoir	348.3	371.2	140.2	875.0
Lyman Lake	12.2	7.3	8.0	30.0
Lake Havasu	575.4	570.7	564.2	619.0
Lake Mohave	1699.0	1679.0	1671.0	1810.0
Lake Mead	9617.0	7508.0	15384.0	26159.0
Lake Powell	8044.2	5380.1	13256.0	24322.0

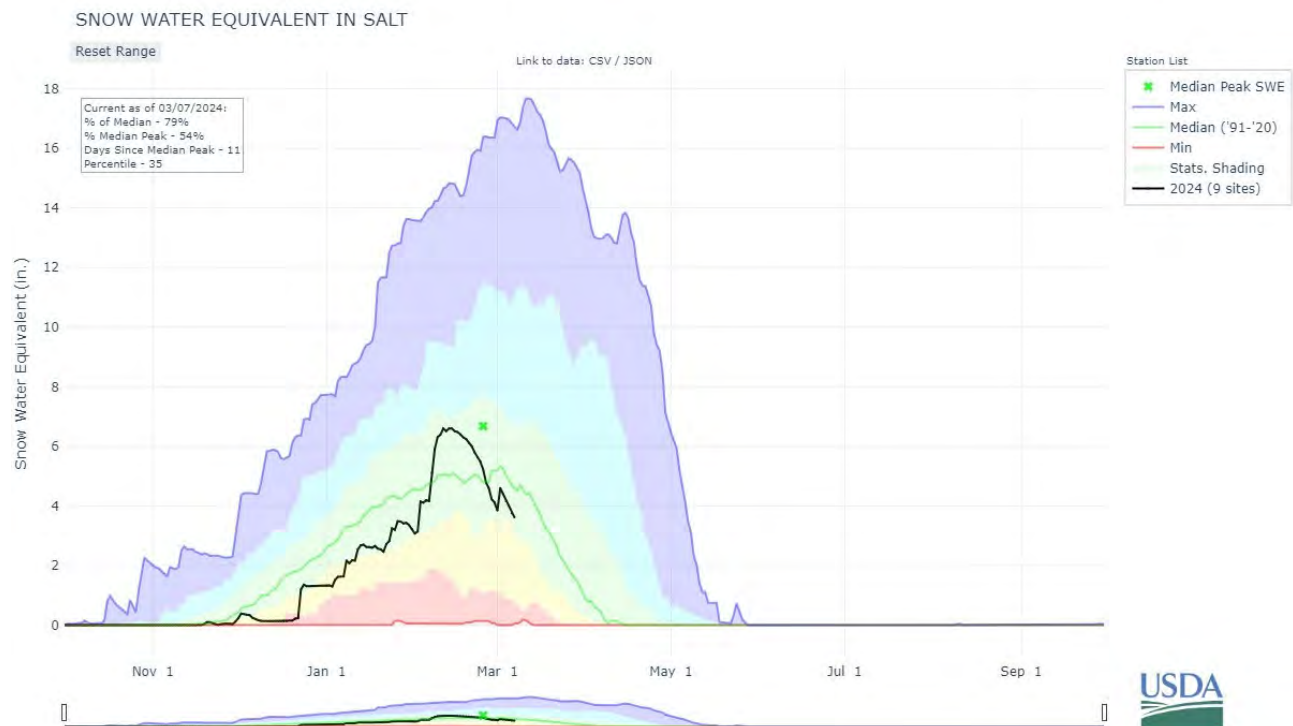
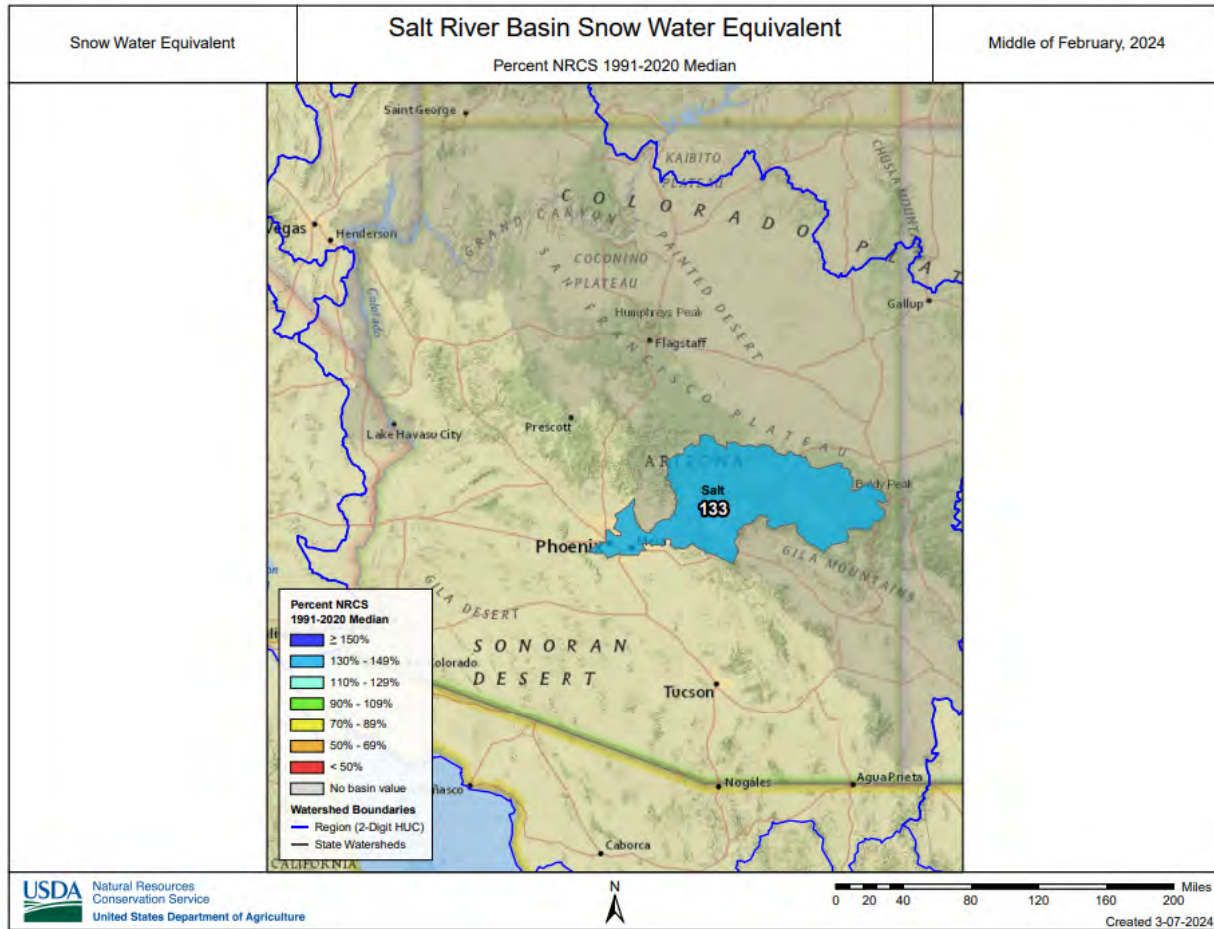
STREAMFLOW

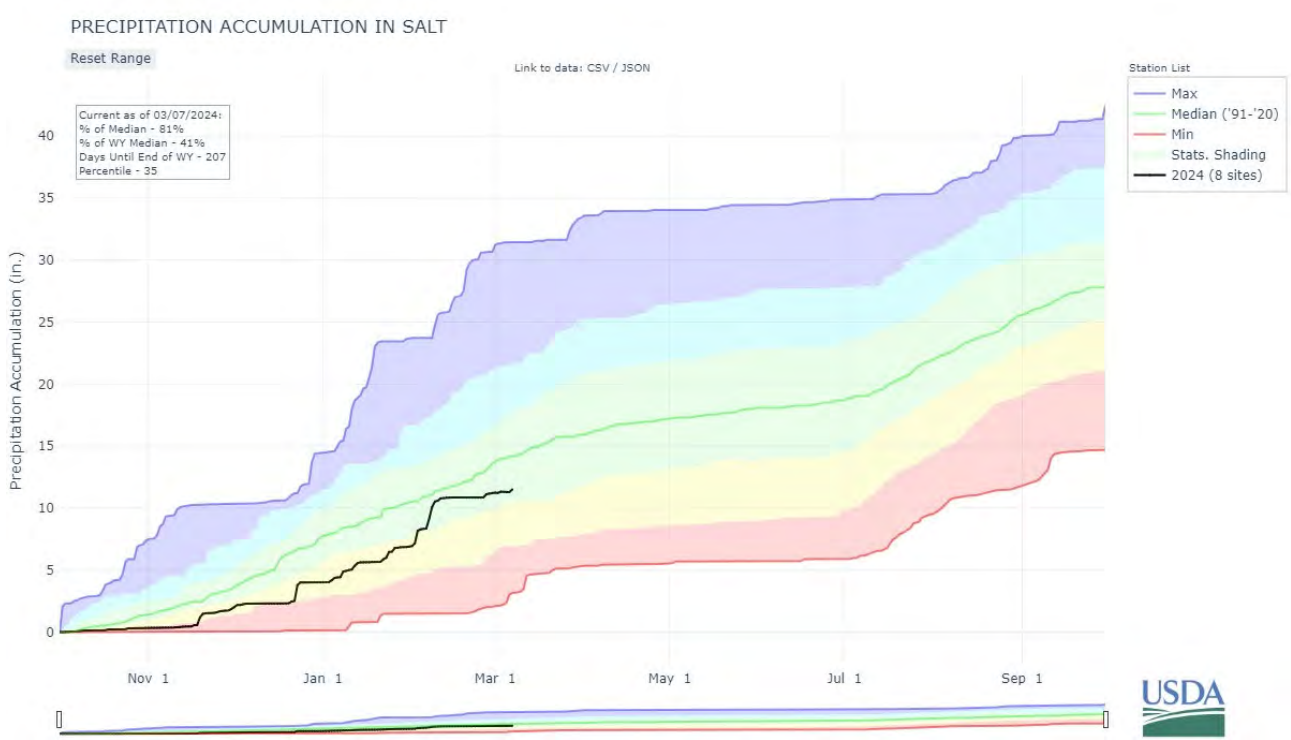
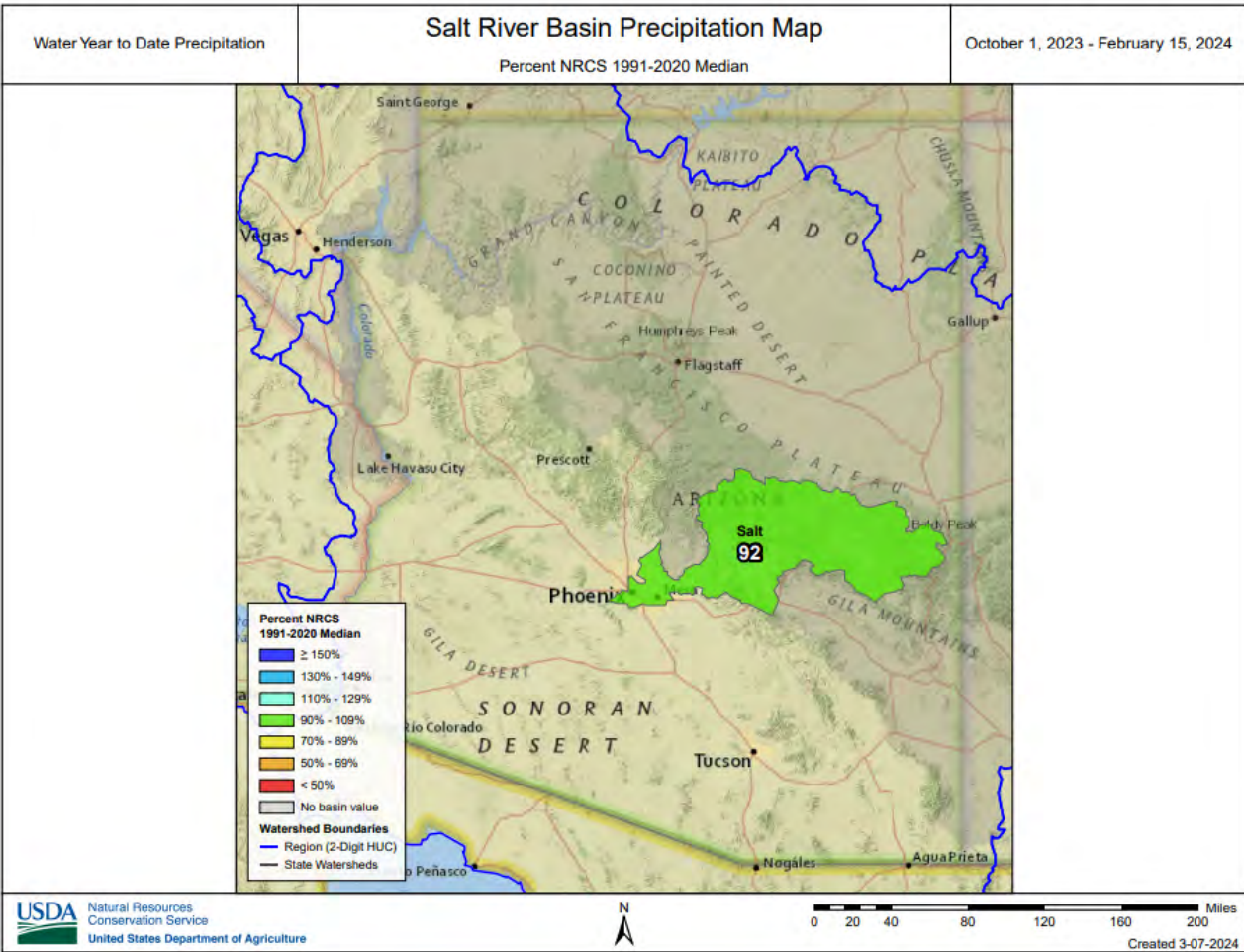
As of February 15, the forecast calls for median to well above median streamflow for the spring runoff period, ranging from 86 percent of median in the Little Colorado Mainstem to 166 percent of median in the Gila River Basin. Please refer to the basin forecast tables found in this report for more information regarding water supply forecasts.

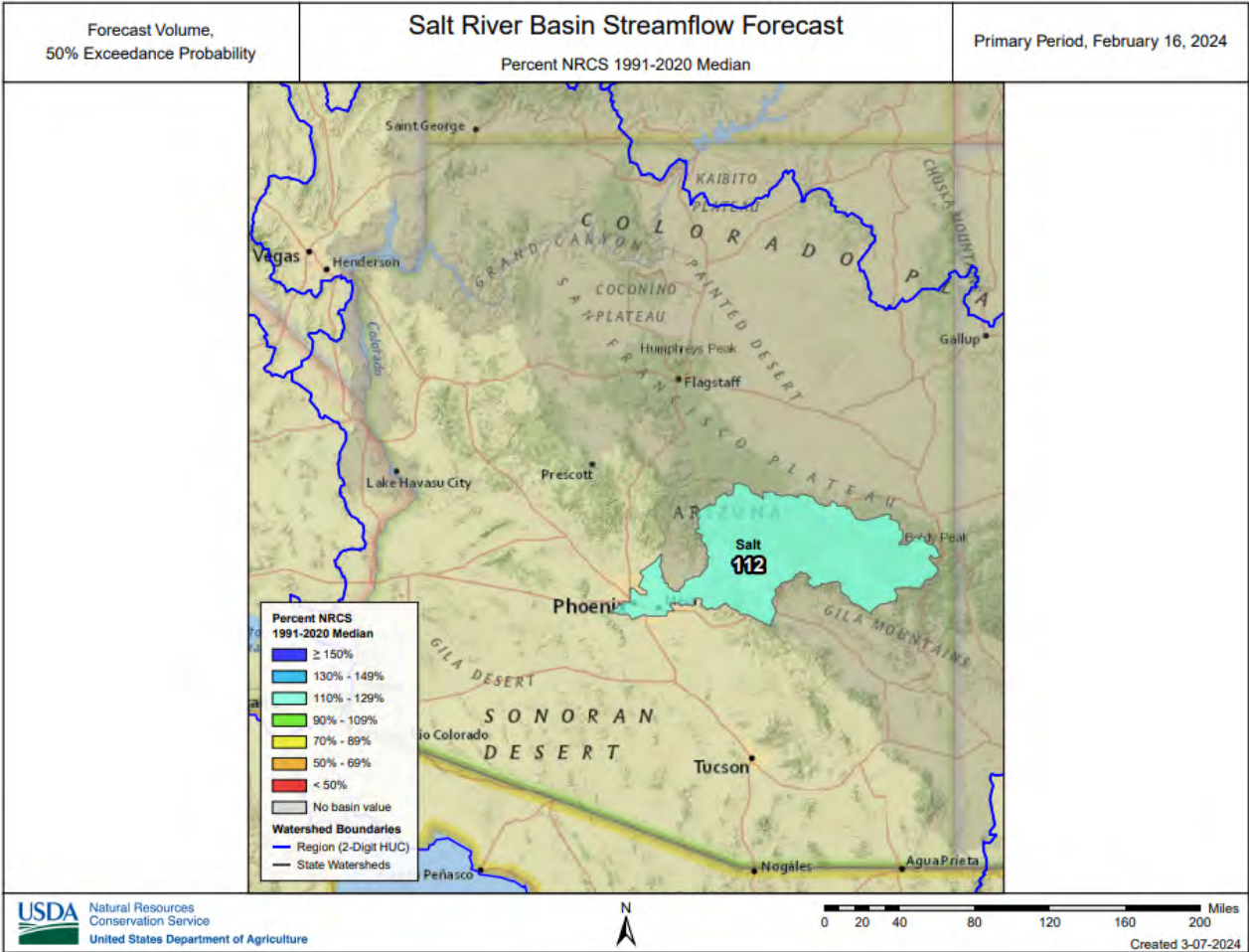


SALT RIVER BASIN as of February 15, 2024

Above median streamflow levels are forecast for the basin. In the Salt River, near Roosevelt, the forecast calls for 110% of median streamflow through May, while at Tonto Creek, the forecast calls for 124% of median streamflow through May. Snow survey measurements show the Salt snowpack to be at 33% of median.







Data Current as of: 2/20/2024 2:55:28 PM

Salt
Streamflow Forecasts - February 16, 2024

Forecast Exceedance Probabilities for Risk Assessment
Chance that actual volume will exceed forecast

Salt	Forecast Period	90% (KAF)	70% (KAF)	50% (KAF)	% Median	30% (KAF)	10% (KAF)	30yr Median (KAF)
Salt R nr Roosevelt	FEB	9.8	24	38	106%	57	97	36
	MAR-MAY	94	153	205	115%	265	380	179
	F15-MAY	105	166	220	110%	285	400	200
Tonto Ck ab Gun Ck nr Roosevelt	FEB	6.3	14.5	23	359%	34	57	6.4
	F15-MAY	5.9	17.6	31	124%	50	90	25

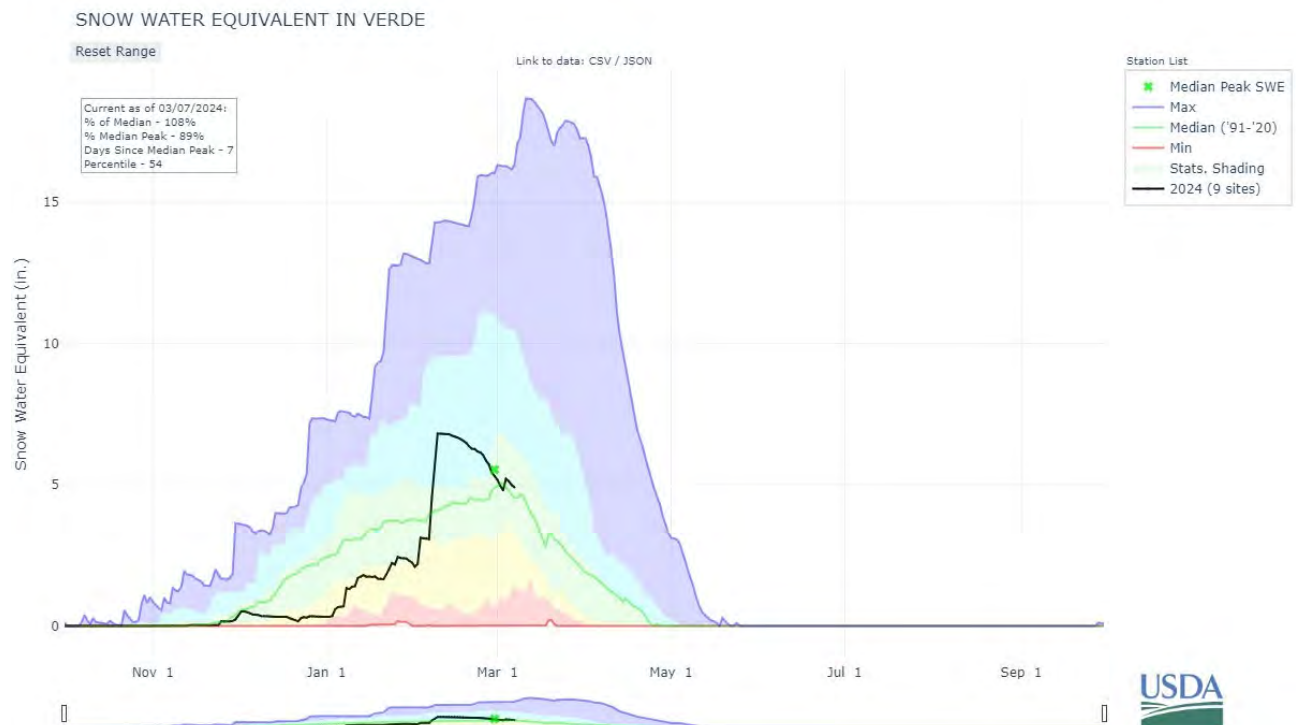
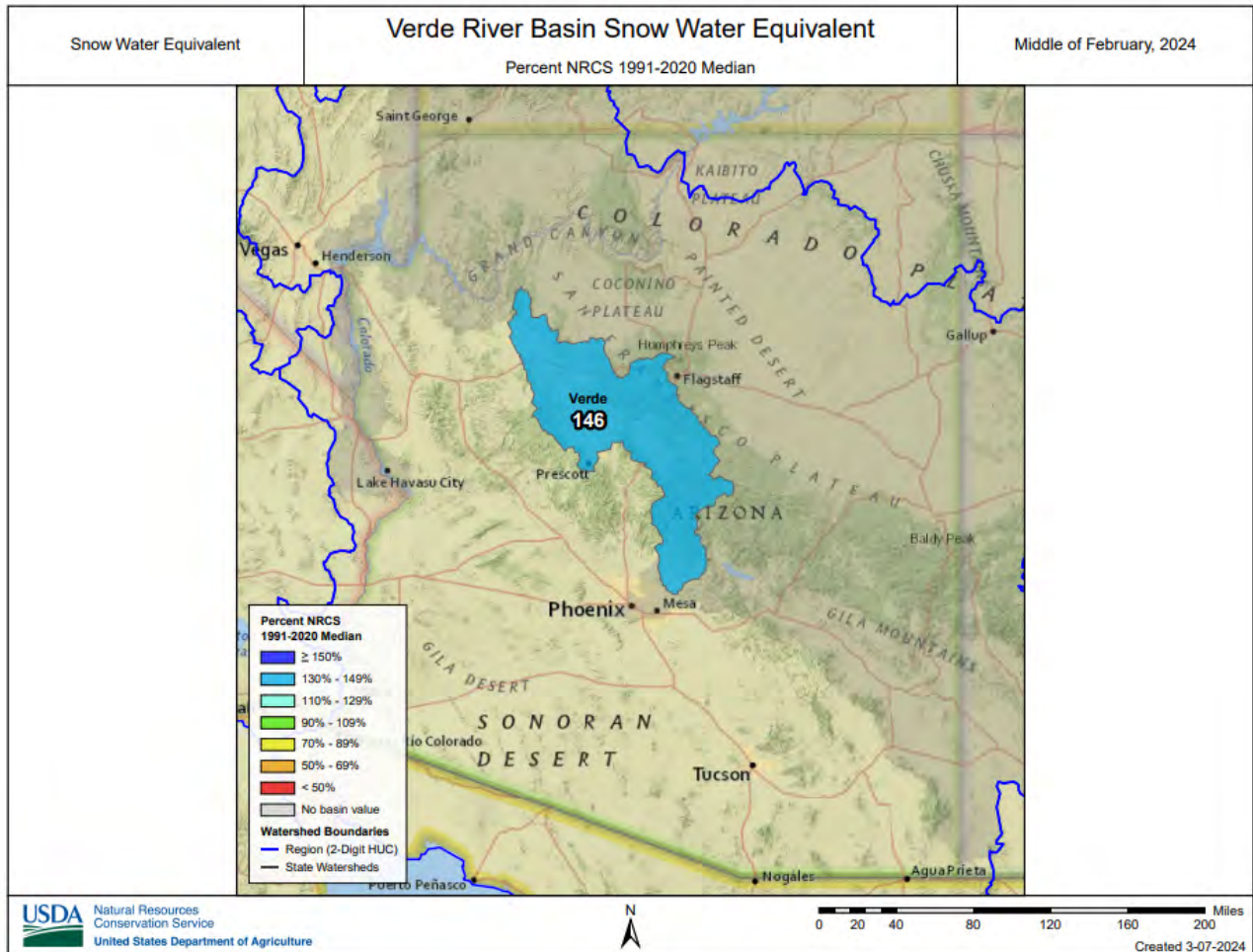
- 1) 90% and 10% exceedance probabilities are actually 95% and 5%
- 2) Forecasts are for unimpaired flows. Actual flow will be dependent on management of upstream reservoirs and diversions

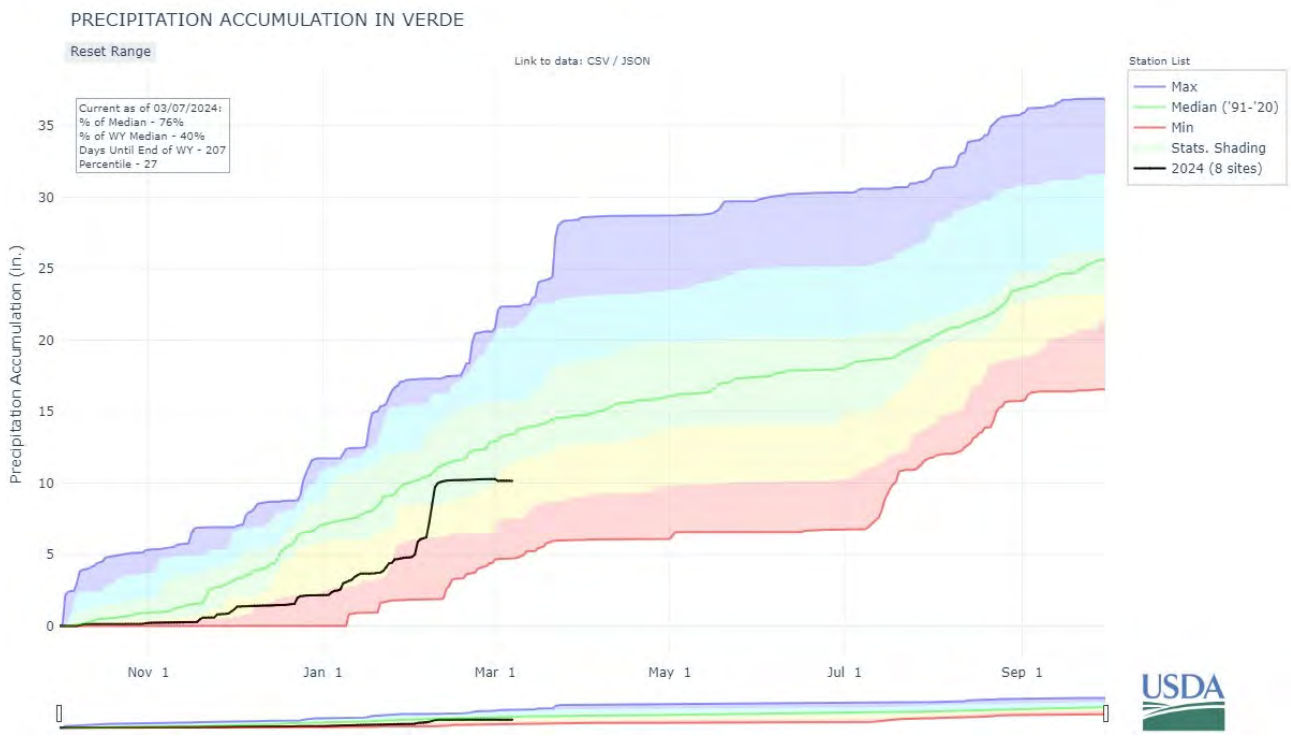
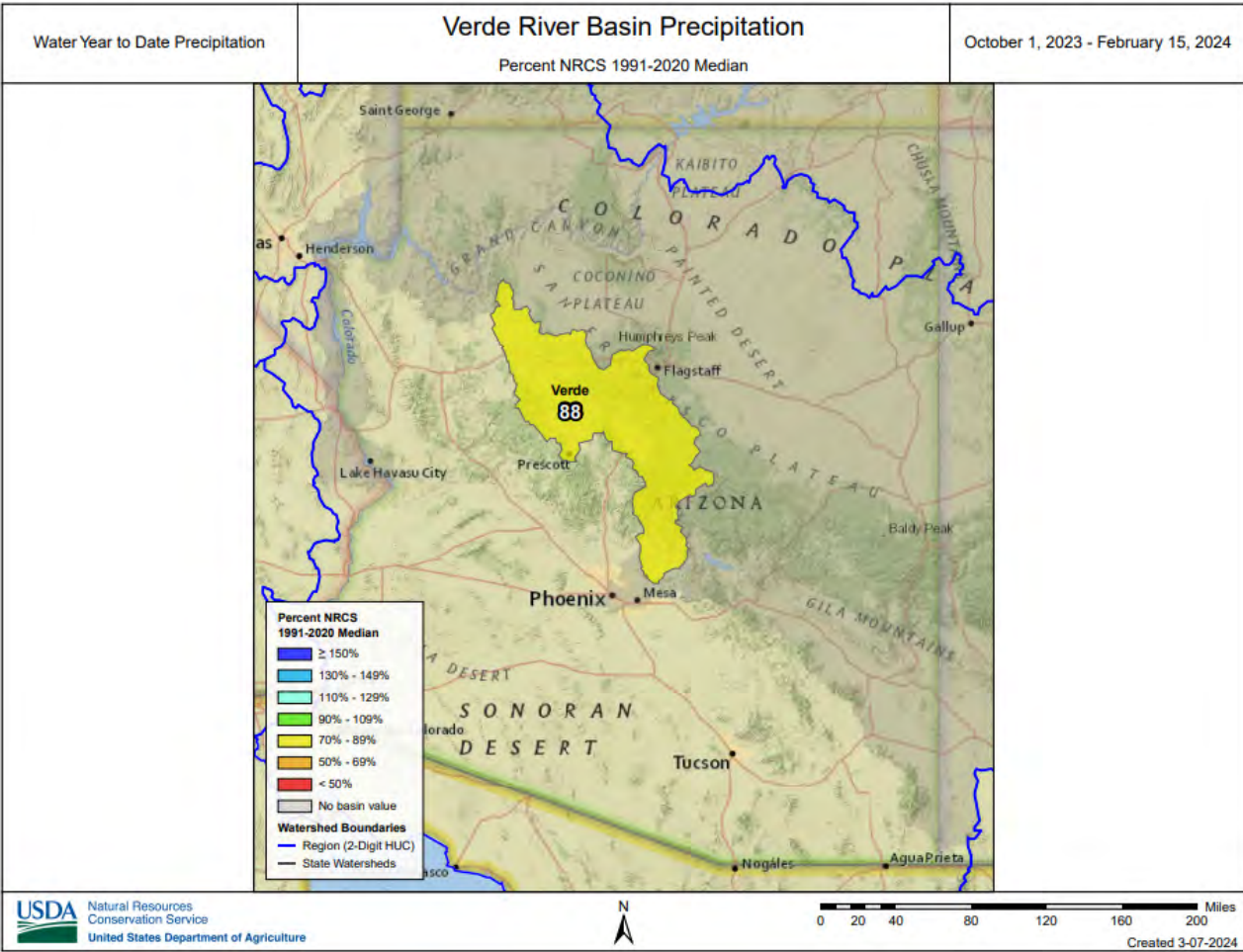
Reservoir Storage	Current (KAF)	Last Year (KAF)	Median (KAF)	Capacity (KAF)
Middle of January, 2024				
Salt River Reservoir System	1754.6	1620.0	1217.0	2025.8

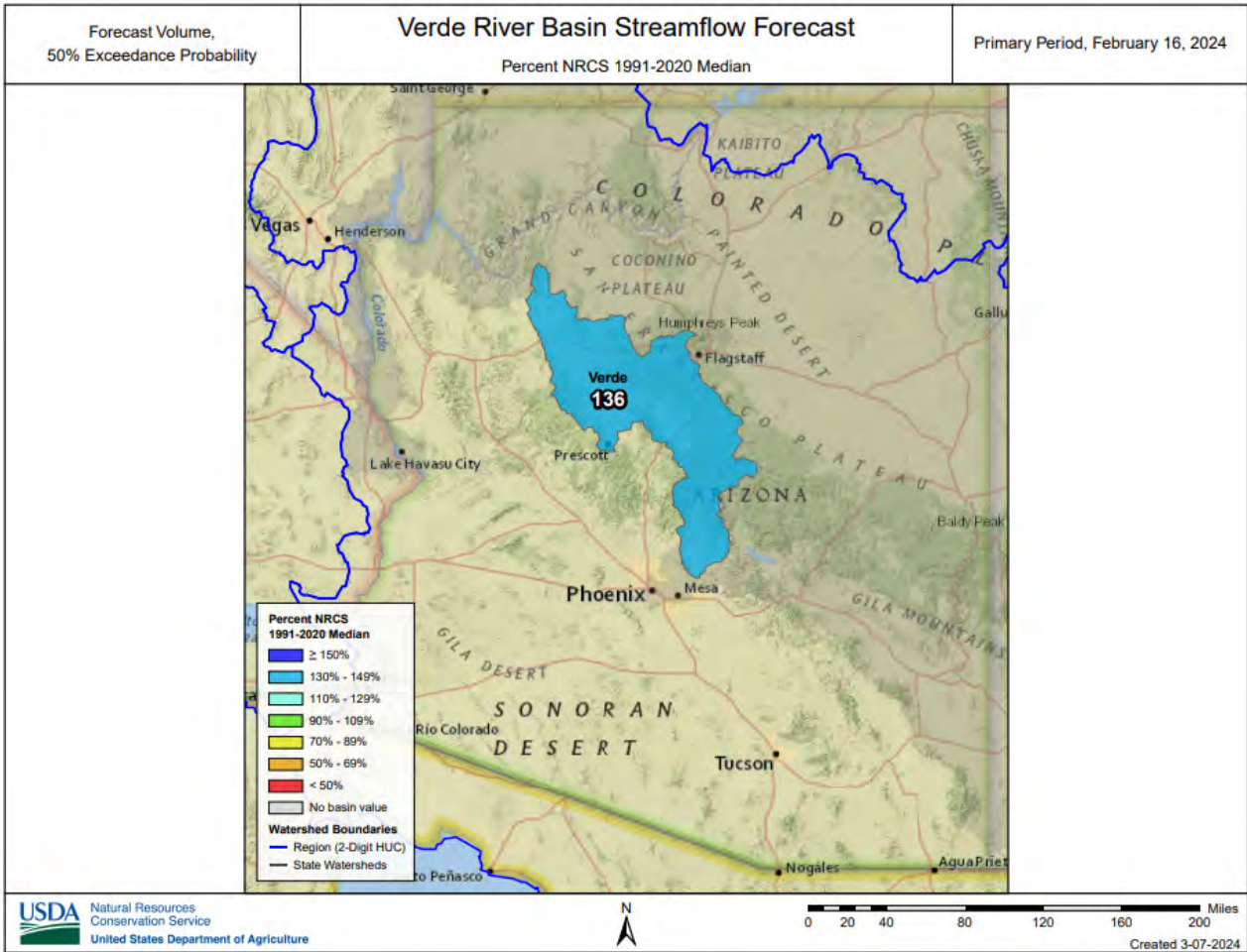
Watershed Snowpack Analysis	# of Sites	% Median	Last Year % Median
February 16, 2024			
Salt	10	134%	154%
Central Mogollon Rim	7	144%	212%
Upper Salt	7	137%	130%

VERDE RIVER BASIN as of February 15, 2024

Well above median streamflow levels are forecast for the basin. In the Verde River above Horseshoe Dam, the forecast calls for 136% of median streamflow through May. Snow survey measurements show the Verde snowpack to be at 146% of median.







Data Current as of: 2/20/2024 2:55:30 PM

Verde Streamflow Forecasts - February 16, 2024

Forecast Exceedance Probabilities for Risk Assessment
Chance that actual volume will exceed forecast

Verde	Forecast Period	90% (KAF)	70% (KAF)	50% (KAF)	% Median	30% (KAF)	10% (KAF)	30yr Median (KAF)
Verde R bl Tangle Ck ab Horseshoe Dam	FEB	13.7	31	49	181%	72	118	27
	F15-MAY	50	92	131	136%	180	270	96

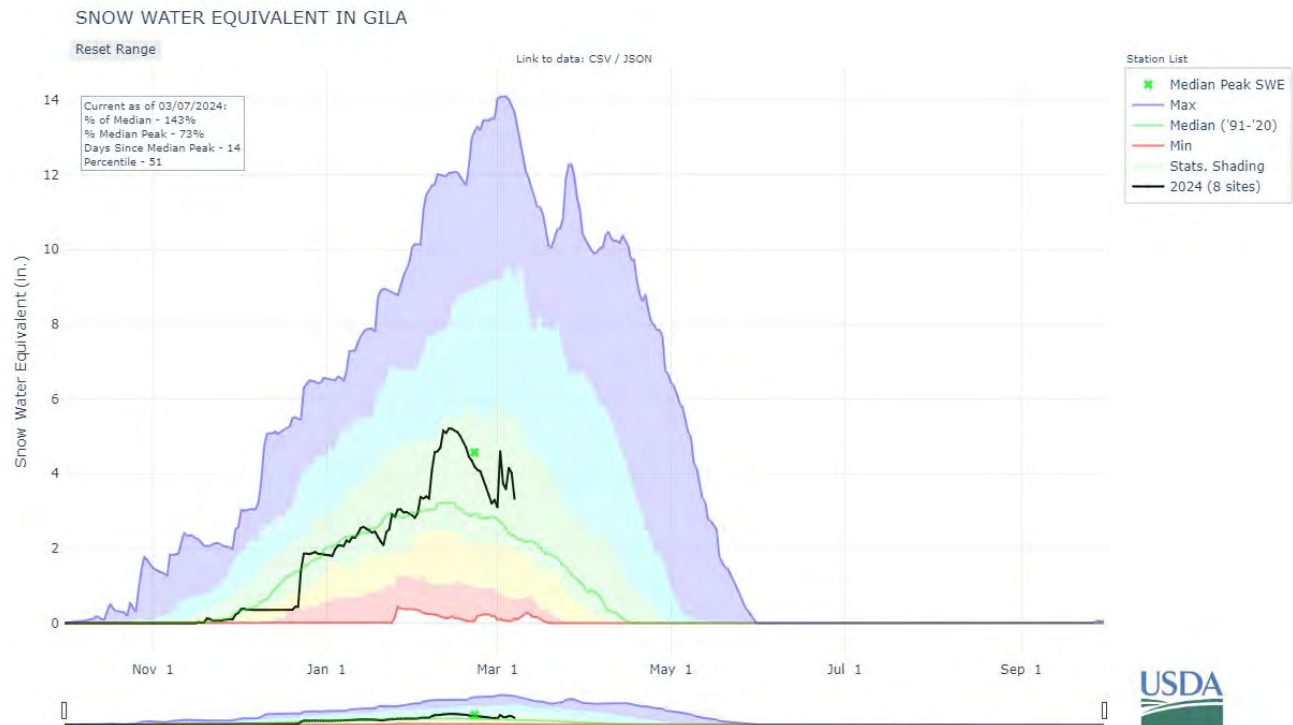
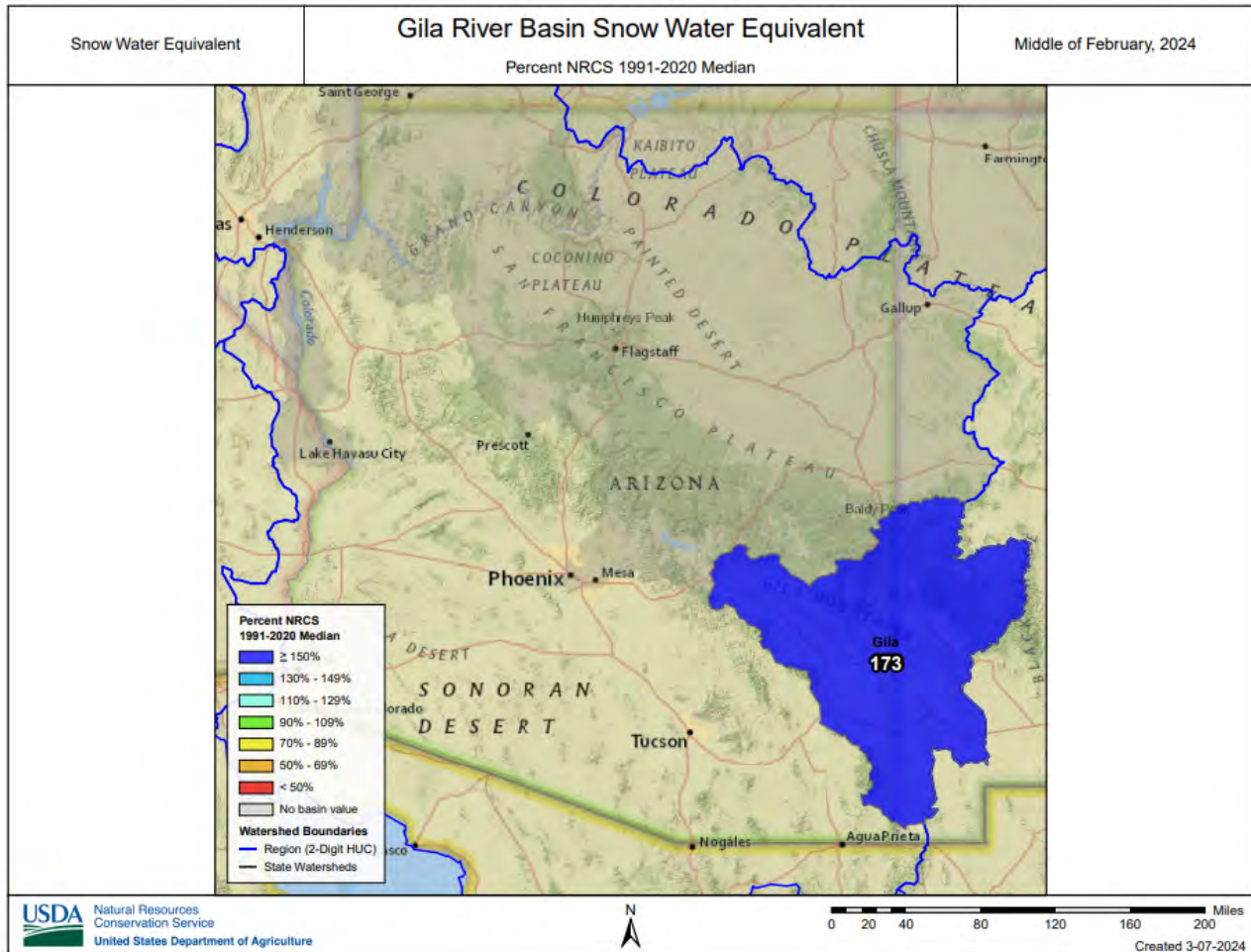
- 1) 90% and 10% exceedance probabilities are actually 95% and 5%
- 2) Forecasts are for unimpaired flows. Actual flow will be dependent on management of upstream reservoirs and diversions

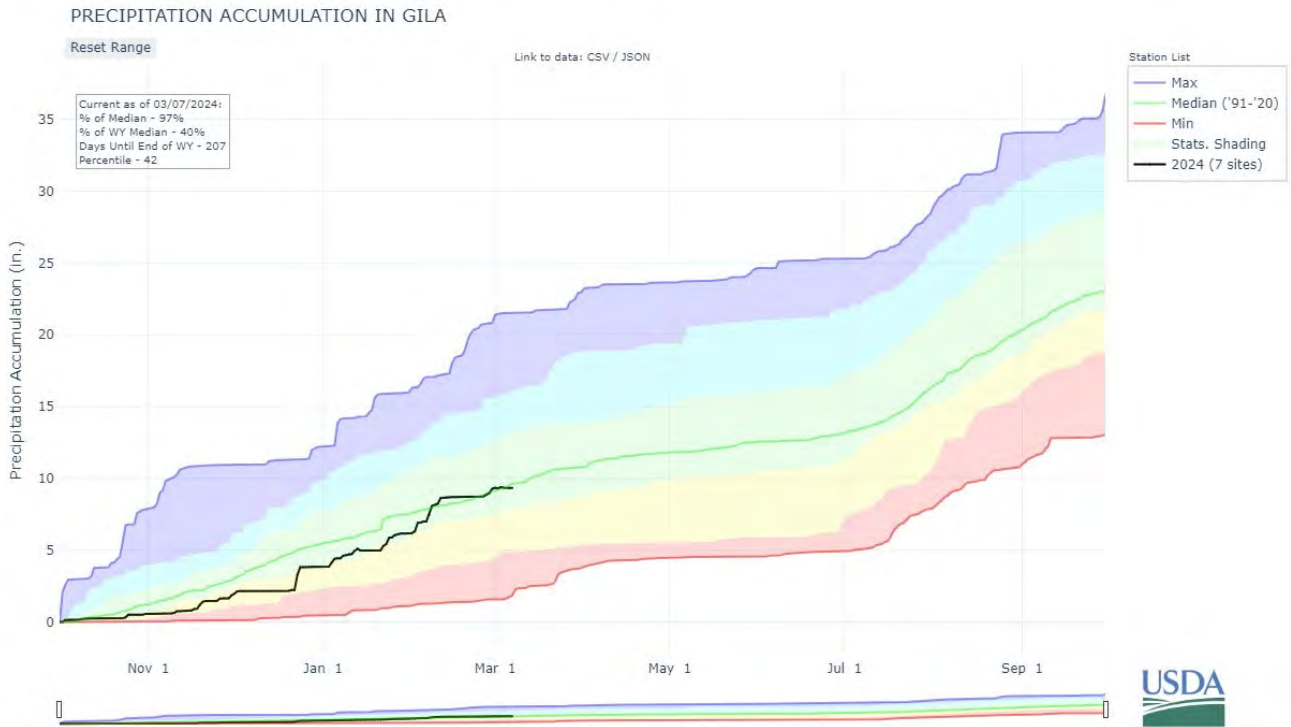
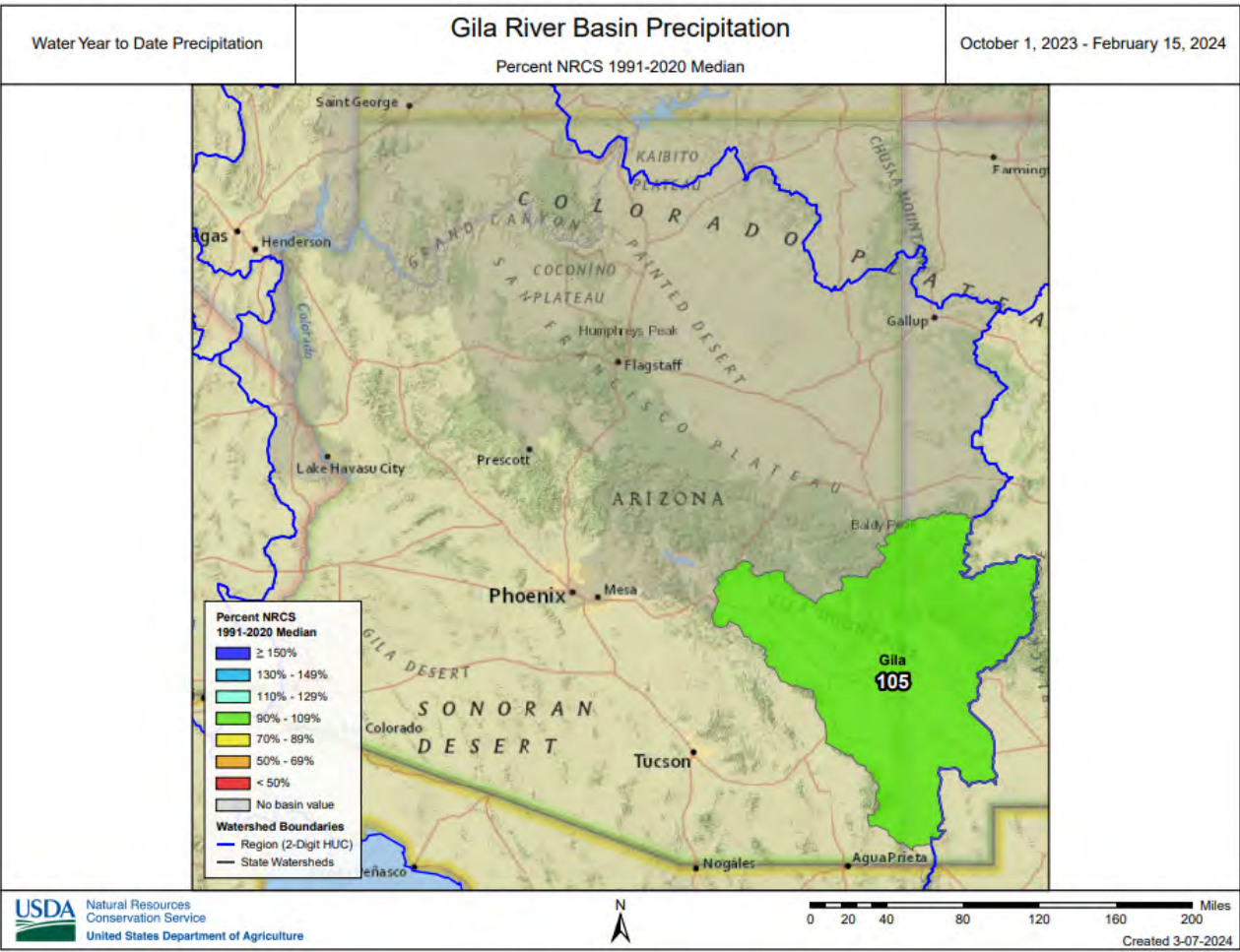
Reservoir Storage Middle of January, 2024	Current (KAF)	Last Year (KAF)	Median (KAF)	Capacity (KAF)
Verde River Reservoir System	158.0	201.8	139.7	287.4

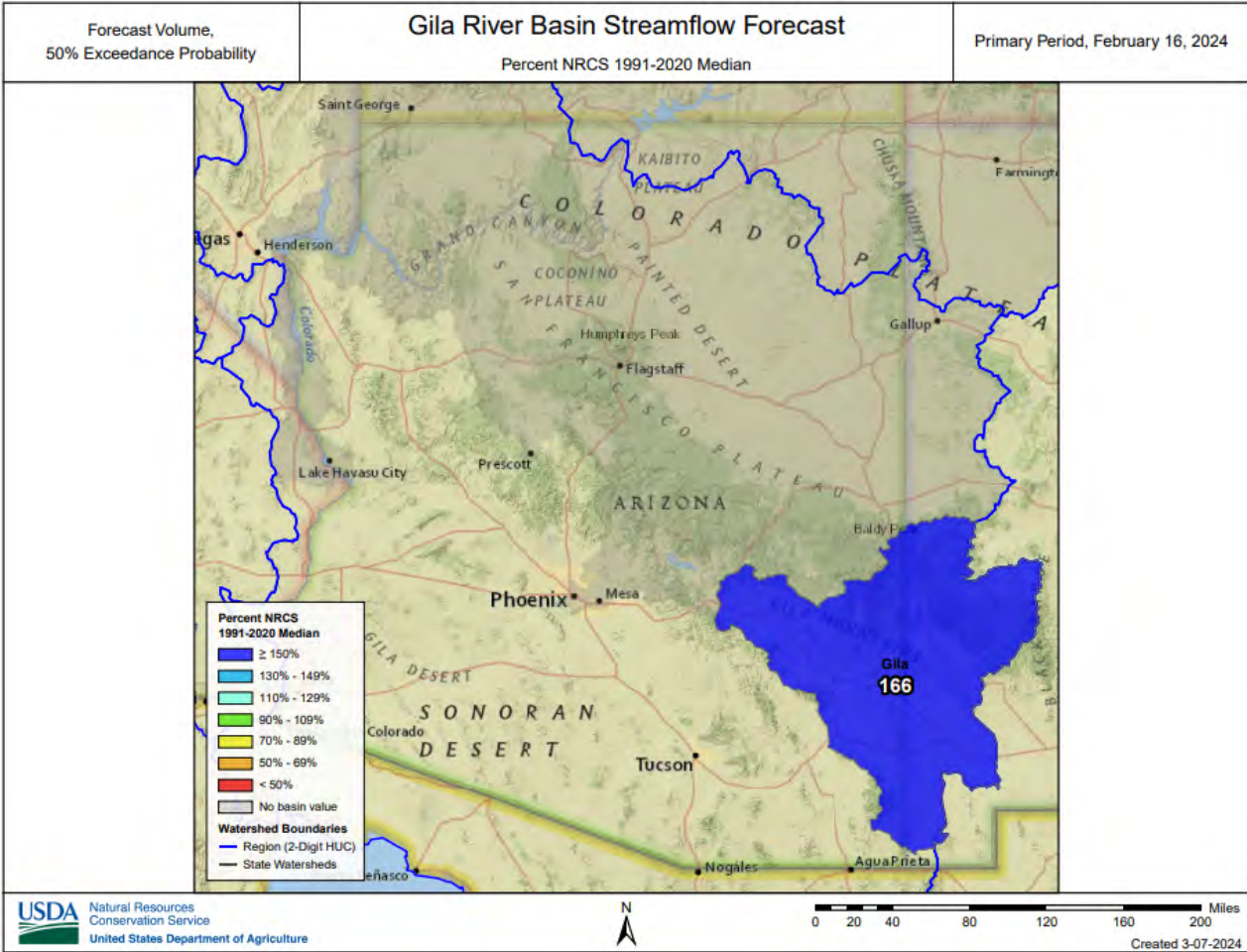
Watershed Snowpack Analysis February 16, 2024	# of Sites	% Median	Last Year % Median
Verde	13	146%	234%
Upper Verde	11	144%	242%

SAN FRANCISCO-UPPER GILA RIVER BASIN as of February 15, 2024

Well above median streamflow levels are forecast for the basin. In the San Francisco River, at Clifton, the forecast calls for 181% of median streamflow levels through May. In the Gila River, near Solomon, the forecast calls for 160% of median streamflow levels through May. At San Carlos Reservoir, inflow to the lake is forecast at 169% of median through May. Snow survey measurements show the snowpack for this basin to be at 173% of median.







Data Current as of: 2/20/2024 2:55:25 PM

Gila Streamflow Forecasts - February 16, 2024

Forecast Exceedance Probabilities for Risk Assessment
Chance that actual volume will exceed forecast

Gila	Forecast Period	90% (KAF)	70% (KAF)	50% (KAF)	% Median	30% (KAF)	10% (KAF)	30yr Median (KAF)
San Francisco R at Glenwood	F15-MAY	11.1	18.8	26	206%	34	49	12.6
Gila R at Gila	F15-MAY	26	38	48	141%	59	79	34
Gila R nr Solomon	FEB	4.7	13.8	24	114%	38	68	21
Gila R bl Blue Ck nr Virden	F15-MAY	55	88	117	160%	153	215	73
San Francisco R at Clifton	F15-MAY	33	50	65	171%	82	112	38
San Carlos Reservoir Inflow	F15-MAY	27	44	58	181%	76	108	32
	F15-MAY	17	45	76	169%	119	205	45

1) 90% and 10% exceedance probabilities are actually 95% and 5%

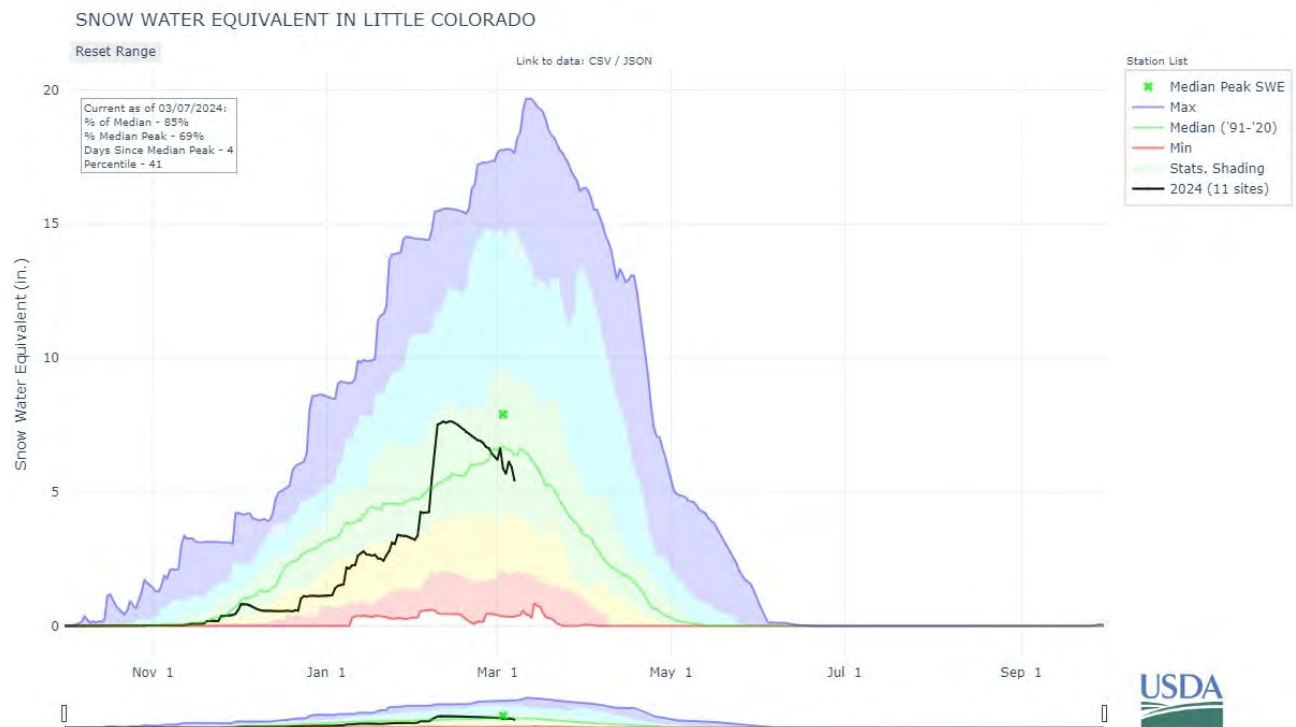
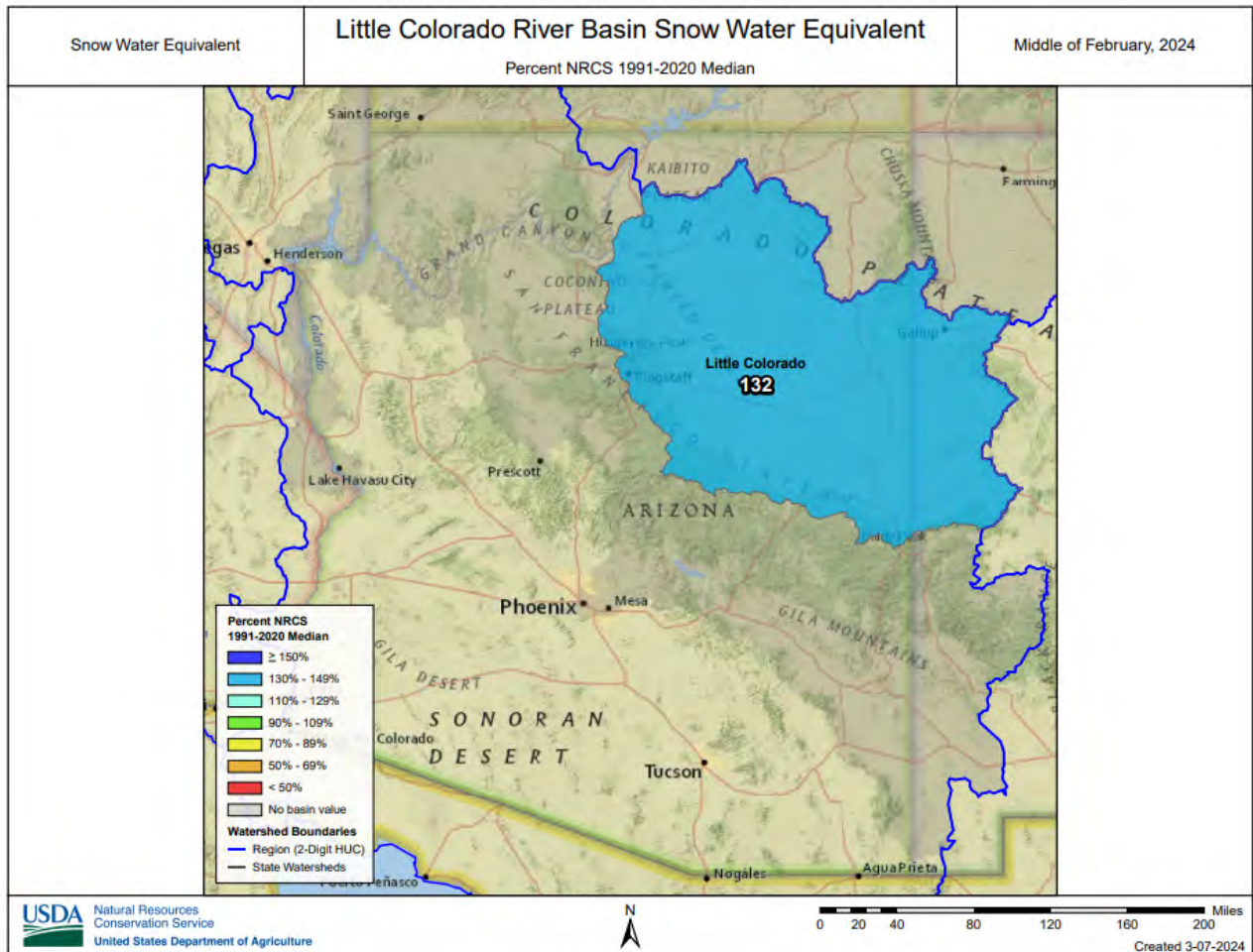
2) Forecasts are for unimpaired flows. Actual flow will be dependent on management of upstream reservoirs and diversions

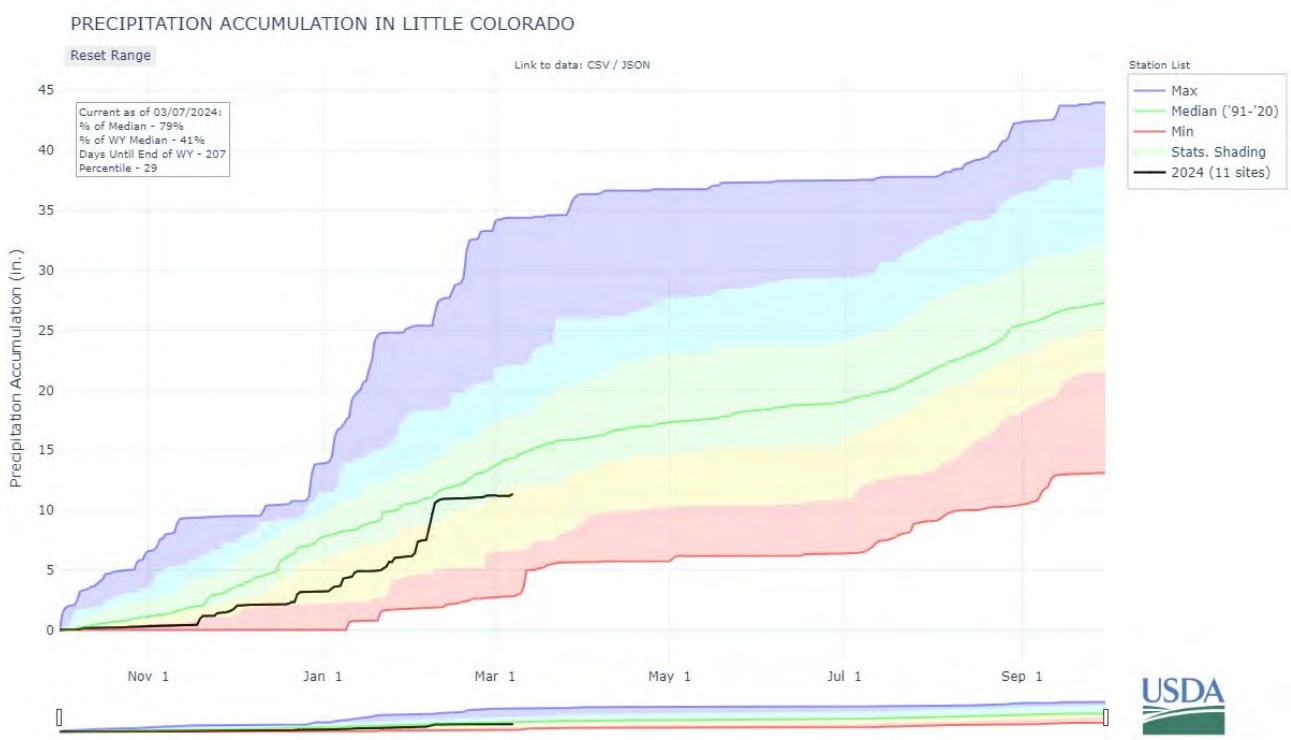
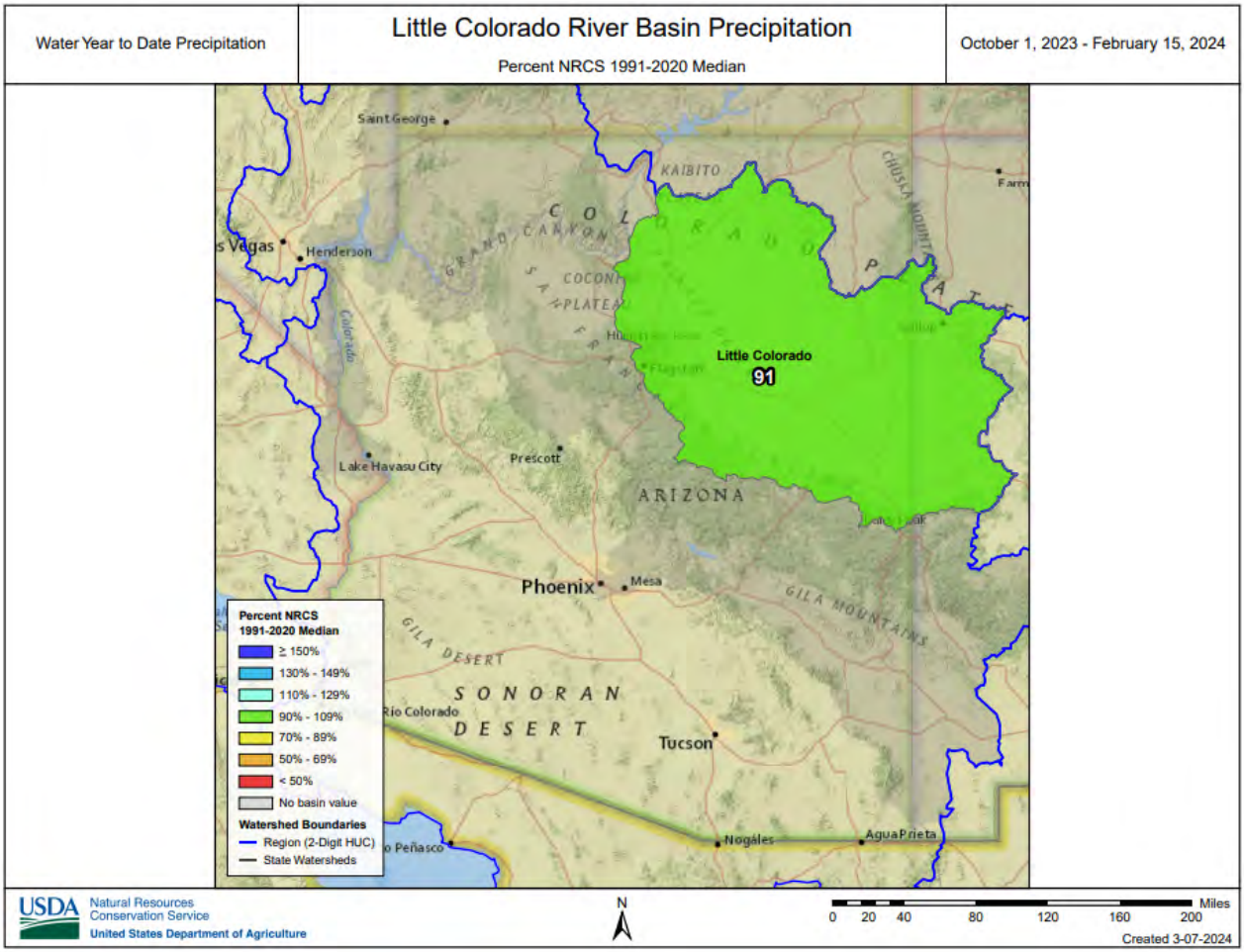
Reservoir Storage Middle of January, 2024	Current (KAF)	Last Year (KAF)	Median (KAF)	Capacity (KAF)
San Carlos Reservoir	348.3	371.2	140.2	875.0

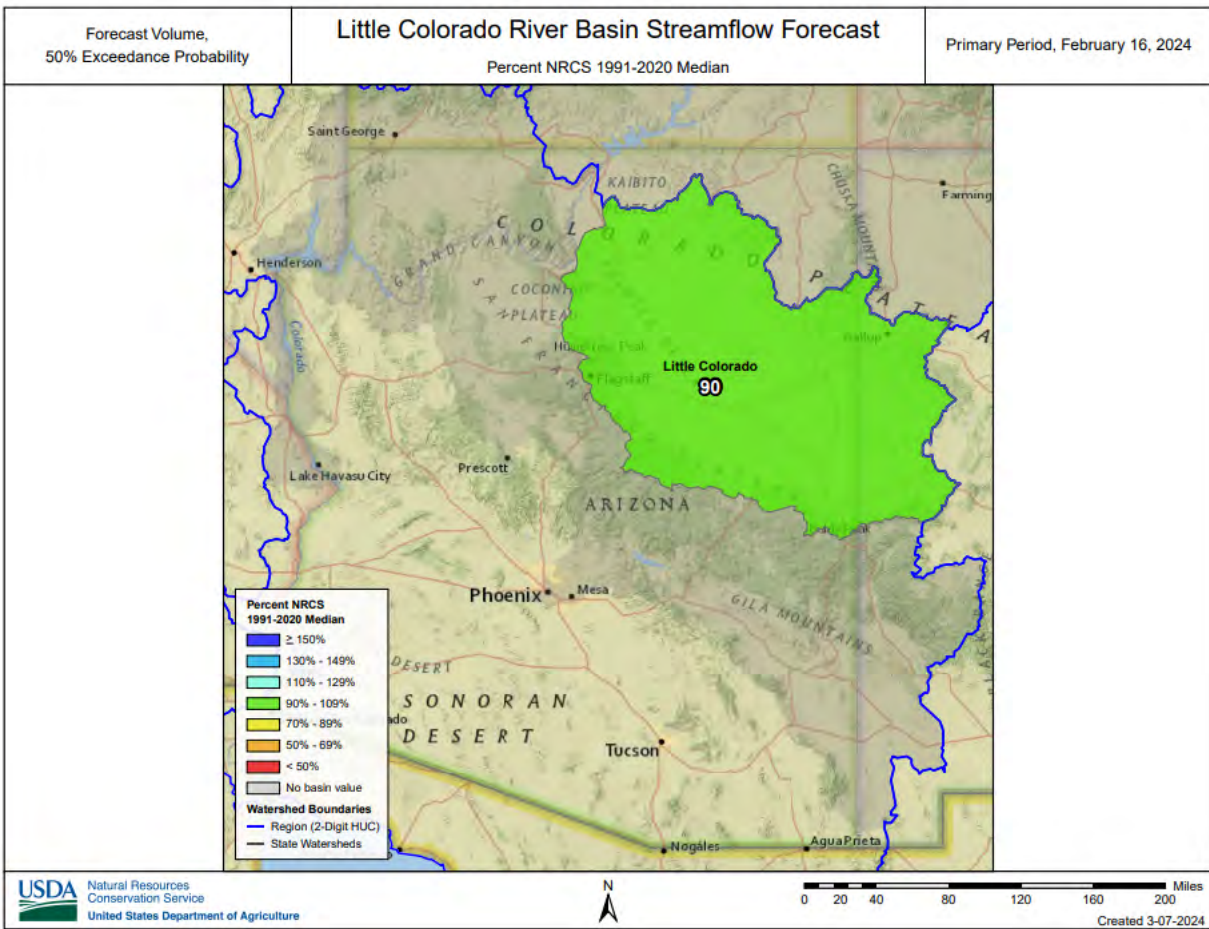
Watershed Snowpack Analysis February 16, 2024	# of Sites	% Median	Last Year % Median
Gila	10	173%	128%
San Francisco	8	181%	144%
Upper Gila	3	151%	85%

LITTLE COLORADO RIVER BASIN as of February 15, 2024

Median streamflow levels are forecast for the basin. In the Little Colorado River, above Lyman Lake, the forecast calls for 109% of median streamflow through June. At Blue Ridge (C.C. Cragin) Reservoir, inflow to the lake is forecast at 71% of median through May. Snow survey measurements show the snowpack for this basin to be at 90% of median.







Data Current as of: 2/20/2024 2:55:32 PM

Little Colorado Streamflow Forecasts - February 16, 2024

Forecast Exceedance Probabilities for Risk Assessment
Chance that actual volume will exceed forecast

Little Colorado	Forecast Period	90% (KAF)	70% (KAF)	50% (KAF)	% Median	30% (KAF)	10% (KAF)	30yr Median (KAF)
Zuni R ab Black Rock Reservoir								
Bowl Canyon Ck ab Asaayi Lake								
Blue Ridge Reservoir Inflow								
Rio Nutria nr Ramah	FEB-MAY	0.8	3.9	8	71%	14.5	29	11.3
Lake Mary Reservoir Inflow								
Little Colorado R ab Lyman Lake	FEB-MAY	1.7	3	4.1	124%	5.5	8.1	3.3
	FEB-JUN	2.4	4.4	6	109%	7.9	11.2	5.5

1) 90% and 10% exceedance probabilities are actually 95% and 5%

2) Forecasts are for unimpaired flows. Actual flow will be dependent on management of upstream reservoirs and diversions

Reservoir Storage Middle of January, 2024	Current (KAF)	Last Year (KAF)	Median (KAF)	Capacity (KAF)
Lyman Reservoir	12.2	7.3	8.0	30.0
Cragin Dam Reservoir	7.8	8.9	8.9	15.0

Watershed Snowpack Analysis February 16, 2024	# of Sites	% Median	Last Year % Median
Little Colorado	16	132%	201%
Canyon Diablo	7	133%	228%
Chevelon Canyon	2	132%	188%
Little Colorado Headwaters	4	112%	110%
Zuni	0		

Basinwide Summary: February 16, 2024
 (Medians based on 1991-2020 reference period)

Snowpack Summary for February 16, 2024

Gila	Network	Elevation (ft)	Depth (in)	SWE (in)	Median (in)	% Median	Last Year SWE (in)	Last Year % Median
Beaver Head	SNOTEL	8076	14	4.9	1.8	272%	3.5	194%
Coronado Trail	SC	8350	14	3.1	1.2	258%	4.1	342%
Coronado Trail	SNOTEL	8418	13	5.4	2.0	270%	3.9	195%
Frisco Divide	SNOTEL	8013	13	4.1	2.0	205%	3.5	175%
Hannagan Meadows	SNOTEL	9027	34	9.5	8.1	117%	8.0	99%
Lookout Mountain	SNOTEL	8509	4	1.9	1.2	158%	0.8	67%
Nutrioso	SC	8500	8	1.7	0.6	283%	1.1	183%
Nutrioso	SNOTEL	8571	3	0.8	0.0		0.7	
Signal Peak	SNOTEL	8405	8	3.0	2.6	115%	0.6	23%
Silver Creek Divide	SNOTEL	9096	34	11.3	6.9	164%	7.7	112%
State Line	SC	8000			1.5			
Basin Index						173%	128%	
# of sites						10	10	

San Francisco	Network	Elevation (ft)	Depth (in)	SWE (in)	Median (in)	% Median	Last Year SWE (in)	Last Year % Median
Beaver Head	SNOTEL	8076	14	4.9	1.8	272%	3.5	194%
Coronado Trail	SC	8350	14	3.1	1.2	258%	4.1	342%
Coronado Trail	SNOTEL	8418	13	5.4	2.0	270%	3.9	195%
Frisco Divide	SNOTEL	8013	13	4.1	2.0	205%	3.5	175%
Hannagan Meadows	SNOTEL	9027	34	9.5	8.1	117%	8.0	99%
Nutrioso	SC	8500	8	1.7	0.6	283%	1.1	183%
Nutrioso	SNOTEL	8571	3	0.8	0.0		0.7	
Silver Creek Divide	SNOTEL	9096	34	11.3	6.9	164%	7.7	112%
State Line	SC	8000			1.5			
Basin Index						181%	144%	
# of sites						8	8	

Upper Gila	Network	Elevation (ft)	Depth (in)	SWE (in)	Median (in)	% Median	Last Year SWE (in)	Last Year % Median
Lookout Mountain	SNOTEL	8509	4	1.9	1.2	158%	0.8	67%
Signal Peak	SNOTEL	8405	8	3.0	2.6	115%	0.6	23%
Silver Creek Divide	SNOTEL	9096	34	11.3	6.9	164%	7.7	112%
Basin Index						151%	85%	
# of sites						3	3	

Salt	Network	Elevation (ft)	Depth (in)	SWE (in)	Median (in)	% Median	Last Year SWE (in)	Last Year % Median
Baldy	SNOTEL	9221	24	6.9	6.0	115%	7.3	122%
Beaver Head	SNOTEL	8076	14	4.9	1.8	272%	3.5	194%
Buck Spring	SC	7400	7	1.6	0.9	178%		
Coronado Trail	SC	8350	14	3.1	1.2	258%	4.1	342%
Coronado Trail	SNOTEL	8418	13	5.4	2.0	270%	3.9	195%
Fort Apache	SC	9160	34	8.5	7.1	120%		
Hannagan Meadows	SNOTEL	9027	34	9.5	8.1	117%	8.0	99%
Hawley Lake	SNOTEL	8314	44	13.1			12.6	
Heber	SNOTEL	7654	25	7.7	3.9	197%	10.9	279%
Maverick Fork	SNOTEL	9220	19	5.8	7.0	83%	5.9	84%
Promontory	SNOTEL	7942	32	9.3	9.0	103%	13.4	149%
Wildcat	SNOTEL	7868	12	4.0	2.8	143%	4.9	175%
Workman Creek	SNOTEL	7032	15	4.8	4.0	120%	8.8	220%

Basin Index					134%		154%	
# of sites					10		10	
Central Mogollon Rim	Network	Elevation (ft)	Depth (in)	SWE (in)	Median (in)	% Median	Last Year SWE (in)	Last Year % Median
Baker Butte	SNOTEL	7363	22	6.0	3.2	188%	9.0	281%
Baker Butte No. 2	SC	7700			7.4			
Baker Butte Smt	SNOTEL	7752	47	12.8	9.1	141%	15.9	175%
Happy Jack	SC	7630	21	5.5	2.7	204%	8.5	315%
Happy Jack	SNOTEL	7539	28	7.2	5.2	138%	12.0	231%
Heber	SNOTEL	7654	25	7.7	3.9	197%	10.9	279%
Promontory	SNOTEL	7942	32	9.3	9.0	103%	13.4	149%
Workman Creek	SNOTEL	7032	15	4.8	4.0	120%	8.8	220%
Basin Index					144%		212%	
# of sites					7		7	
Upper Salt	Network	Elevation (ft)	Depth (in)	SWE (in)	Median (in)	% Median	Last Year SWE (in)	Last Year % Median
Baldy	SNOTEL	9221	24	6.9	6.0	115%	7.3	122%
Beaver Head	SNOTEL	8076	14	4.9	1.8	272%	3.5	194%
Buck Spring	SC	7400	7	1.6	0.9	178%		
Coronado Trail	SC	8350	14	3.1	1.2	258%	4.1	342%
Coronado Trail	SNOTEL	8418	13	5.4	2.0	270%	3.9	195%
Fort Apache	SC	9160	34	8.5	7.1	120%		
Hannagan Meadows	SNOTEL	9027	34	9.5	8.1	117%	8.0	99%
Hawley Lake	SNOTEL	8314	44	13.1			12.6	
Maverick Fork	SNOTEL	9220	19	5.8	7.0	83%	5.9	84%
Wildcat	SNOTEL	7868	12	4.0	2.8	143%	4.9	175%
Basin Index					137%		130%	
# of sites					7		7	
Verde	Network	Elevation (ft)	Depth (in)	SWE (in)	Median (in)	% Median	Last Year SWE (in)	Last Year % Median
Baker Butte	SNOTEL	7363	22	6.0	3.2	188%	9.0	281%
Baker Butte No. 2	SC	7700			7.4			
Baker Butte Smt	SNOTEL	7752	47	12.8	9.1	141%	15.9	175%
Bar M	SNOTEL	6397	12	3.8			9.8	
Chalender	SC	7100			1.0		5.5	550%
Chalender	SNOTEL	7035	17	3.8	2.6	146%	7.3	281%
Fort Valley	SNOTEL	7371	12	3.1	0.0		6.6	
Fort Valley	SC	7350	15	3.2	1.2	267%	5.9	492%
Fry	SNOTEL	7236	29	8.5	5.8	147%	14.7	253%
Happy Jack	SC	7630	21	5.5	2.7	204%	8.5	315%
Happy Jack	SNOTEL	7539	28	7.2	5.2	138%	12.0	231%
Mormon Mountain	SNOTEL	7500	24	7.1	3.9	182%	13.9	356%
Mormon Mountain Summit #2	SC	8470			7.0			
Mormon Mtn Summit	SNOTEL	8462	31	7.5	7.2	104%	13.3	185%
Newman Park	SC	6750			1.3		6.7	515%
Snow Bowl #2	SC	11200	52	11.8	11.6	102%	17.8	153%
White Horse Lake	SNOTEL	7203	16	4.1	2.2	186%	9.3	423%
Williams Ski Run	SC	7720	35	8.9	6.7	133%	9.6	143%
Basin Index					146%		234%	
# of sites					13		13	
Upper Verde	Network	Elevation (ft)	Depth (in)	SWE (in)	Median (in)	% Median	Last Year SWE (in)	Last Year % Median

Bar M	SNOTEL	6397	12	3.8				9.8	
Chalender	SNOTEL	7035	17	3.8	2.6	146%		7.3	281%
Chalender	SC	7100			1.0			5.5	550%
Fort Valley	SNOTEL	7371	12	3.1	0.0			6.6	
Fort Valley	SC	7350	15	3.2	1.2	267%		5.9	492%
Fry	SNOTEL	7236	29	8.5	5.8	147%		14.7	253%
Happy Jack	SC	7630	21	5.5	2.7	204%		8.5	315%
Happy Jack	SNOTEL	7539	28	7.2	5.2	138%		12.0	231%
Mormon Mountain	SNOTEL	7500	24	7.1	3.9	182%		13.9	356%
Mormon Mountain Summit #2	SC	8470			7.0				
Mormon Mtn Summit	SNOTEL	8462	31	7.5	7.2	104%		13.3	185%
Newman Park	SC	6750			1.3			6.7	515%
Snow Bowl #2	SC	11200	52	11.8	11.6	102%		17.8	153%
White Horse Lake	SNOTEL	7203	16	4.1	2.2	186%		9.3	423%
Williams Ski Run	SC	7720	35	8.9	6.7	133%		9.6	143%
Basin Index							144%		242%
# of sites							11		11

Little Colorado	Network	Elevation (ft)	Depth (in)	SWE (in)	Median (in)	% Median	Last Year SWE (in)	Last Year % Median
Baker Butte	SNOTEL	7363	22	6.0	3.2	188%	9.0	281%
Baker Butte No. 2	SC	7700			7.4			
Baker Butte Smt	SNOTEL	7752	47	12.8	9.1	141%	15.9	175%
Baldy	SNOTEL	9221	24	6.9	6.0	115%	7.3	122%
Boon	SC	8140						
Bowl Canyon	SC	8980			7.6		9.4	124%
Buck Spring	SC	7400	7	1.6	0.9	178%		
Cheese Springs	SC	8700	25	6.2	4.5	138%		
Dan Valley	SC	7640						
Fluted Rock	SC	7800			3.2			
Fort Apache	SC	9160	34	8.5	7.1	120%		
Fort Valley	SNOTEL	7371	12	3.1	0.0		6.6	
Fort Valley	SC	7350	15	3.2	1.2	267%	5.9	492%
Grand Canyon	SC	7500	6	1.3	1.0	130%	5.6	560%
Heber	SNOTEL	7654	25	7.7	3.9	197%	10.9	279%
Lake Mary	SC	6930	12	2.4	1.7	141%	8.0	471%
Maverick Fork	SNOTEL	9220	19	5.8	7.0	83%	5.9	84%
Mcgaffey	SC	8120						
Missionary Spring	SC	7940			3.3		6.6	200%
Mormon Mountain	SNOTEL	7500	24	7.1	3.9	182%	13.9	356%
Mormon Mountain Summit #2	SC	8470			7.0			
Mormon Mtn Summit	SNOTEL	8462	31	7.5	7.2	104%	13.3	185%
Nutriosio	SNOTEL	8571	3	0.8	0.0		0.7	
Nutriosio	SC	8500	8	1.7	0.6	283%	1.1	183%
Promontory	SNOTEL	7942	32	9.3	9.0	103%	13.4	149%
Snow Bowl #2	SC	11200	52	11.8	11.6	102%	17.8	153%
Snowslide Canyon	SNOTEL	9744	51	15.6	12.4	126%	21.1	170%
Basin Index						132%		201%
# of sites						16		16

Canyon Diablo	Network	Elevation (ft)	Depth (in)	SWE (in)	Median (in)	% Median	Last Year SWE (in)	Last Year % Median
Fort Valley	SNOTEL	7371	12	3.1	0.0		6.6	
Fort Valley	SC	7350	15	3.2	1.2	267%	5.9	492%
Lake Mary	SC	6930	12	2.4	1.7	141%	8.0	471%
Mormon Mountain	SNOTEL	7500	24	7.1	3.9	182%	13.9	356%

Mormon Mountain Summit #2	SC	8470				7.0			
Mormon Mtn Summit	SNOTEL	8462	31	7.5	7.2	104%	13.3	185%	
Snow Bowl #2	SC	11200	52	11.8	11.6	102%	17.8	153%	
Snowslide Canyon	SNOTEL	9744	51	15.6	12.4	126%	21.1	170%	
Basin Index						133%		228%	
# of sites						7		7	
Chevelon Canyon									
	Network	Elevation (ft)	Depth (in)	SWE (in)	Median (in)	% Median	Last Year SWE (in)	Last Year % Median	
Heber	SNOTEL	7654	25	7.7	3.9	197%	10.9	279%	
Promontory	SNOTEL	7942	32	9.3	9.0	103%	13.4	149%	
Basin Index						132%		188%	
# of sites						2		2	
Little Colorado Headwaters									
	Network	Elevation (ft)	Depth (in)	SWE (in)	Median (in)	% Median	Last Year SWE (in)	Last Year % Median	
Baldy	SNOTEL	9221	24	6.9	6.0	115%	7.3	122%	
Cheese Springs	SC	8700	25	6.2	4.5	138%			
Fort Apache	SC	9160	34	8.5	7.1	120%			
Maverick Fork	SNOTEL	9220	19	5.8	7.0	83%	5.9	84%	
Nutriosio	SC	8500	8	1.7	0.6	283%	1.1	183%	
Nutriosio	SNOTEL	8571	3	0.8	0.0		0.7		
Basin Index						112%		110%	
# of sites						4		4	
Zuni									
	Network	Elevation (ft)	Depth (in)	SWE (in)	Median (in)	% Median	Last Year SWE (in)	Last Year % Median	
Boon	SC	8140							
Dan Valley	SC	7640							
McGaffey	SC	8120							
Basin Index							0	0	
# of sites									
Lower Colorado Mainstem									
	Network	Elevation (ft)	Depth (in)	SWE (in)	Median (in)	% Median	Last Year SWE (in)	Last Year % Median	
Bright Angel	SC	8400	31	9.1	5.7	160%			
Chalender	SNOTEL	7035	17	3.8	2.6	146%	7.3	281%	
Chalender	SC	7100			1.0		5.5	550%	
Gardner Peak	SNOTEL	8322	34	9.6	9.7	99%	12.9	133%	
Grand Canyon	SC	7500	6	1.3	1.0	130%	5.6	560%	
Gutz Peak	SNOTEL	6763	32	9.9	7.3	136%	15.4	211%	
Harris Flat	SNOTEL	7792	25	6.9	5.4	128%	11.6	215%	
Kolob	SNOTEL	9263	54	13.9	14.2	98%	26.2	185%	
Little Grassy	SNOTEL	6065	12	3.9	1.6	244%	8.4	525%	
Long Flat	SNOTEL	7982	24	6.2	6.2	100%	11.8	190%	
Long Valley Jct	SNOTEL	7465	20	5.1	4.0	128%	11.0	275%	
Midway Valley	SNOTEL	9827	65	16.1	15.2	106%	28.3	186%	
Webster Flat	SNOTEL	9203	44	12.4	9.1	136%	18.2	200%	
Williams Ski Run	SC	7720	35	8.9	6.7	133%	9.6	143%	
Basin Index						118%		200%	
# of sites						12		12	
Grand Canyon									
	Network	Elevation (ft)	Depth (in)	SWE (in)	Median (in)	% Median	Last Year SWE (in)	Last Year % Median	
Bright Angel	SC	8400	31	9.1	5.7	160%			
Grand Canyon	SC	7500	6	1.3	1.0	130%	5.6	560%	

Basin Index							130%	560%	
# of sites							1	1	
Virgin	Network	Elevation (ft)	Depth (in)	SWE (in)	Median (in)	% Median	Last Year SWE (in)	Last Year % Median	
Gardner Peak	SNOTEL	8322	34	9.6	9.7	99%	12.9	133%	
Gutz Peak	SNOTEL	6763	32	9.9	7.3	136%	15.4	211%	
Harris Flat	SNOTEL	7792	25	6.9	5.4	128%	11.6	215%	
Kolob	SNOTEL	9263	54	13.9	14.2	98%	26.2	185%	
Little Grassy	SNOTEL	6065	12	3.9	1.6	244%	8.4	525%	
Long Flat	SNOTEL	7982	24	6.2	6.2	100%	11.8	190%	
Long Valley Jct	SNOTEL	7465	20	5.1	4.0	128%	11.0	275%	
Midway Valley	SNOTEL	9827	65	16.1	15.2	106%	28.3	186%	
Webster Flat	SNOTEL	9203	44	12.4	9.1	136%	18.2	200%	
Basin Index							116%	198%	
# of sites							9	9	
Upper Colorado	Network	Elevation (ft)	Depth (in)	SWE (in)	Median (in)	% Median	Last Year SWE (in)	Last Year % Median	
Agua Canyon	SNOTEL	8900	27	7.2	6.2	116%	10.6	171%	
Arapaho Ridge	SNOTEL	10976	58	14.8	16.1	92%	17.5	109%	
Arrow #2	SC	9668							
Battle Mountain	SNOTEL	7498	32	7.8	8.8	89%	13.0	148%	
Bear River	SNOTEL	9112	32	7.8	8.0	98%	8.6	108%	
Beartown	SNOTEL	11600	50	13.3	14.7	90%	18.4	125%	
Beaver Ck Village	SNOTEL	8565	36	8.0	8.5	94%	10.5	124%	
Beaver Spring	SNOTEL	9255	36	10.7	8.2	130%	12.8	156%	
Beaver Spring	SC	9220			6.7				
Berthoud Pass	SC	9700							
Berthoud Summit	SNOTEL	11314	59	14.6	12.2	120%	13.5	111%	
Big Park	SC	8620							
Big Sandy Opening	SNOTEL	9080	36	8.1	9.0	90%	9.8	109%	
Bison Lake	SNOTEL	10964	62	15.6	16.8	93%	26.1	155%	
Black Flat-U.M. Ck	SNOTEL	9414	28	6.9	6.0	115%	10.6	177%	
Black Mesa	SNOTEL	11564	50	13.2			21.0		
Blacks Fork Jct	SNOTEL	8869	29	7.9	5.9	134%	8.9	151%	
Blind Bull Sum	SNOTEL	8650	67	14.9	17.2	87%	14.9	87%	
Blue River	SC	10500							
Bowl Canyon	SC	8980			7.6		9.4	124%	
Brown Duck	SNOTEL	10574	54	12.9	12.2	106%	15.4	126%	
Bryce Canyon	SC	8000							
Buck Flat	SNOTEL	9409	43	11.4	11.6	98%	16.2	140%	
Buck Pasture	SNOTEL	9632	45	10.5			12.4		
Buckboard Flat	SNOTEL	8924	36	9.8			15.0		
Buckboard Flat	SC	8998							
Buffalo Park	SNOTEL	9249	41	9.8	10.5	93%	11.1	106%	
Burro Mountain	SNOTEL	9317	42	10.0	10.7	93%	14.9	139%	
Butte	SNOTEL	10200	44	11.1	9.4	118%	12.5	133%	
Butterhill	SC	7880							
Camp Jackson	SNOTEL	8858	39	11.3	10.2	111%	17.8	175%	
Cascade #2	SNOTEL	9012	28	8.6	8.8	98%	11.7	133%	
Chapman Tunnel	SNOTEL	10100	41	10.7	11.2	96%	10.2	91%	
Chepeta	SNOTEL	10499	38	8.8	9.0	98%	11.6	129%	
Clayton Springs	SNOTEL	10049	42	9.4	8.0	118%	12.8	160%	
Clear Creek #1	SNOTEL	8975	49	12.1	12.1	100%	20.8	172%	
Cochetopa Pass	SC	10000							

Cochetopa Pass	SNOTEL	10061	17	3.5	3.4	103%	3.8	112%
Columbine	SNOTEL	9167	58	17.8	16.6	107%	20.3	122%
Columbine Lodge	SC	9160						
Columbine Pass	SNOTEL	9171	48	14.5	12.2	119%	28.5	234%
Columbus Basin	SNOTEL	10781	56	14.1	17.4	81%	20.7	119%
Copper Mountain	SNOTEL	10523	48	9.8	10.2	96%	10.6	104%
Corral	SNOTEL	8207	29	7.3			12.3	
Corral Creek	SC	9700						
Cottonwood Pass	SNOLITE	11681	62					
Crested Butte	SC	8920						
Crosho	SNOTEL	8973	39	9.4	8.8	107%	11.9	135%
Currant Creek	SNOTEL	7915	40	9.7	6.6	147%	13.3	202%
Daniels-Strawberry	SNOTEL	8008	44	13.0	10.8	120%	16.7	155%
Dills Camp	SNOTEL	9228	34	8.9	7.9	113%	13.3	168%
Divide Peak	SNOTEL	8730		12.3	13.8	89%	18.2	132%
Donkey Reservoir	SNOTEL	9799	28	5.7	4.9	116%	8.0	163%
Dry Lake	SNOTEL	8271	66	18.7	15.0	125%	24.0	160%
EF Blacks Fork GS	SNOTEL	9360	26	5.8	7.7	75%	9.6	125%
East Rim Divide	SNOTEL	7930	27	6.2	7.9	78%	7.8	99%
East Willow Creek	SNOTEL	8302	32	6.2	5.8	107%	12.2	210%
El Diente Peak	SNOTEL	10217	44	10.6	9.2	115%	14.2	154%
Elk River	SNOTEL	8739	46	12.7	13.8	92%	19.4	141%
Elkhart Park G.S.	SNOTEL	9400	29	6.6	8.6	77%	8.3	97%
Elkhead Divide	SNOTEL	8800	63	15.8			22.0	
Elliot Ridge	SNOTEL	10549	50	15.6	12.2	128%	19.8	162%
Fish Lake	SC	8818						
Fish Lake Utah	SNOTEL	8798	25	6.9	6.9	100%	10.8	157%
Five Points Lake	SNOTEL	10943	50	12.0	10.9	110%	15.6	143%
Fluted Rock	SC	7800			3.2			
Fool Creek	SNOTEL	11156	45	13.6			12.7	
Fremont Pass	SNOTEL	11326	44	9.7	11.4	85%	10.0	88%
G.B.R.C. Meadows	SC	9780						
GBRC Meadows	SNOTEL	9858	50	14.2			20.0	
Gold Basin	SNOTEL	10076	50	12.7			21.3	
Gore Pass	SC	9400						
Granby	SC	8600						
Grizzly Peak	SNOTEL	11139	46	10.8	12.2	89%	11.7	96%
Gros Ventre Summit	SNOTEL	8750	40	7.3	8.6	85%	8.0	93%
Groundhog	SC	8940						
Gunsight Pass	SNOTEL	9820	41	8.5	9.3	91%	8.8	95%
Hagerman Tunnel	SC	11150						
Hams Fork	SNOTEL	7840	23	5.0	8.4	60%	10.2	121%
Haskins Creek	SC	8975						
Henry's Fork	SNOLITE	10182	33					
Hewinta	SNOTEL	9500	36	7.4	6.4	116%	8.2	128%
Hickerson Park	SNOTEL	9122	30	6.3	5.2	121%	6.6	127%
Hidden Valley	SC	8480			5.5		9.0	164%
High Lonesome	SNOTEL	10638	59	15.4			15.2	
Hole-in-Rock	SNOTEL	9168	28	5.7	4.9	116%	5.9	120%
Huntington Horse	SNOTEL	9652	56	17.8			27.4	
Huntington-Horseshoe	SC	9657						
Idarado	SNOTEL	9812	33	8.0	8.8	91%	11.3	128%
Independence Pass	SC	10600						
Independence Pass	SNOTEL	10598	45	9.9	11.6	85%	11.1	96%
Indian Creek	SNOTEL	9425	62	15.1	16.3	93%	17.9	110%
Ironton Park	SC	9600						
Ivanhoe	SNOTEL	10541	49	12.3	10.3	119%	12.0	117%

Jones Pass	SNOTEL	10426	44	10.2	10.5	97%	10.8	103%
Jones Pass	SC	10400						
Kelley R.S.	SNOTEL	8180	46	11.0	10.6	104%	13.3	125%
Kendall R.S.	SNOTEL	7740	30	6.2	8.6	72%	7.9	92%
Keystone	SC	9960						
Kiln	SNOTEL	9624	36	9.0	8.8	102%	9.0	102%
Kings Cabin	SNOTEL	8728	31	7.1	6.4	111%	13.9	217%
Lake City	SC	10160						
Lake Irene	SC	10700						
Lake Irene	SNOTEL	10682		13.6	16.8	81%	18.6	111%
Lakefork #1	SNOTEL	10128	39	8.9	8.2	109%	10.6	129%
Lakefork #3	SNOTEL	8464	24	5.4	4.6	117%	8.4	183%
Lakefork Basin	SNOTEL	10885	59	13.4	14.0	96%	18.8	134%
Lapland	SC	9300						
Larsen Creek	SC	9020						
Larsen Creek	SNOTEL	9000	21	5.1	7.4	69%	7.0	95%
Lasal Mountain	SNOTEL	9578	32	9.2	8.8	105%	15.5	176%
Lasal Mountain-Lower	SC	8825						
Lasal Mountain-Lower	SNOTEL	8783	29	7.8			12.6	
Lemon Reservoir	SC	8700						
Little Snake River	SNOTEL	8928	71	19.3	20.0	97%	25.9	130%
Lizard Head Pass	SNOTEL	10193	42	10.6	10.0	106%	14.3	143%
Lone Cone	SNOTEL	9755		10.4	11.6	90%	15.7	135%
Lonesome Beaver	SNOTEL	9410	14	3.9			9.0	
Loomis Park	SNOTEL	8240	39	8.8	11.2	79%	10.0	89%
Lost Dog	SNOTEL	9327		15.1	17.4	87%	22.2	128%
Lostman	SC	10626						
Lynx Pass	SNOTEL	8919		8.4	7.8	108%	9.8	126%
Mammoth-Cottonwood	SNOTEL	8709	50	14.8	13.0	114%	22.2	171%
Mancos	SNOTEL	10044		12.0	11.5	104%	14.8	129%
Mc Clure Pass	SNOTEL	8774		10.1	11.2	90%	17.9	160%
Mc Kenzie Gulch	SC	8500						
Mccoy Park	SNOTEL	9516	152	10.4	10.2	102%	12.0	118%
Mesa Lakes	SC	10000						
Mesa Lakes	SNOTEL	10168		10.9	10.6	103%	14.0	132%
Middle Fork Camp	SNOTEL	8969		8.6	7.8	110%	8.8	113%
Middle Fork Campground	SC	9000						
Milner Pass	SC	9750						
Mineral Creek	SNOTEL	10046		9.0	10.2	88%	12.4	122%
Missionary Spring	SC	7940			3.3		6.6	200%
Molas Lake	SNOTEL	10631		10.0	12.4	81%	14.8	119%
Monarch Offshoot	SC	10500						
Mosby Mtn.	SNOTEL	9553	36	7.3	7.0	104%	12.6	180%
Mt Baldy	SNOTEL	9524	57	17.2			24.7	
Mt Pennell	SNOTEL	9209	30	7.0			10.0	
Nast Lake	SC	8700						
Nast Lake	SNOTEL	8731		8.2	6.0	137%	7.6	127%
Navajo Whiskey Ck	SNOTEL	9064	40	12.0	7.7	156%	15.2	197%
New Fork Lake	SNOTEL	8340	27	6.0	7.6	79%	7.4	97%
North Inlet Grand Lake	SC	9000						
North Lost Trail	SNOTEL	9219		11.9	11.0	108%	16.5	150%
Old Battle	SNOTEL	9860	77	19.1	21.8	88%	26.4	121%
Overland Res.	SNOTEL	9893		7.0	8.4	83%	12.9	154%
Park Cone	SNOTEL	9621	33	8.7	6.8	128%	9.1	134%
Park Cone	SC	9600						
Park Reservoir	SNOTEL	9987	54	14.7	16.4	90%	27.9	170%
Phantom Valley	SNOTEL	9045	29	6.2	7.6	82%	8.8	116%

Pocket Creek	SC	9350							
Pocket Creek	SNOTEL	9360							
Porphyry Creek	SC	10760							
Porphyry Creek	SNOTEL	10788	51	13.4	10.8	124%	13.4	124%	
Rabbit Ears	SNOTEL	9411	66	18.9	17.0	111%	22.8	134%	
Ranch Creek	SC	9400							
Red Mountain Pass	SNOTEL	11080	56	14.4	15.0	96%	19.0	127%	
Red Pine Ridge	SNOTEL	8988	43	11.4	9.3	123%	13.6	146%	
Rio Blanco	SC	8500							
Ripple Creek	SNOTEL	10350	73	17.6	18.2	97%	24.9	137%	
Rock Creek	SNOTEL	7886	28	6.5	6.2	105%	8.5	137%	
Rowdy Creek	SC	8300							
Sage Creek Basin	SNOTEL	7850	38	8.2	10.1	81%	16.7	165%	
Sandstone RS	SNOTEL	8152		12.0	9.6	125%	16.6	173%	
Sargents Mesa	SNOTEL	11499	32	7.3	8.3	88%	8.3	100%	
Schofield Pass	SNOTEL	10653	72	18.8	20.5	92%	28.2	138%	
Scotch Creek	SNOTEL	9195	35	9.3	8.4	111%	13.5	161%	
Seeley Creek	SNOTEL	9904	37	9.3	8.4	111%	15.5	185%	
Sharkstooth	SNOTEL	10747	49	12.5	13.2	95%	18.9	143%	
Shrine Pass	SC	10700							
Slumgullion	SNOTEL	11560	33	8.3	9.6	86%	8.8	92%	
Snake River	SC	10000							
Snider Basin	SNOTEL	8060	32	6.5	9.2	71%	9.1	99%	
Spirit Lk	SNOTEL	10235	36	8.8	8.1	109%	12.4	153%	
Spring Creek Divide	SNOTEL	9000		15.1	17.4	87%	16.5	95%	
Spud Mountain	SNOTEL	10674	57	15.6	17.7	88%	22.6	128%	
Steel Creek Park	SNOTEL	10158	40	10.1	10.1	100%	12.9	128%	
Stillwater Creek	SNOTEL	8880	22	5.6			7.8		
Strawberry Divide	SNOTEL	8123	54	15.2	11.1	137%	15.2	137%	
Stump Lakes	SNOTEL	11248	52	13.4	12.6	106%	17.4	138%	
Summit Ranch	SNOTEL	9371	33	7.8	7.6	103%	9.1	120%	
Sunflower Flat	SNOTEL	10018	34	8.6			12.6		
Telluride	SC	8800							
Tennessee Pass #2	SC	10280							
Timberline	SNOTEL	8736	33	8.2	7.5	109%	14.6	195%	
Tower	SNOTEL	10620	95	28.6	30.8	93%	37.7	122%	
Trapper Lake	SNOTEL	9759	33	9.7			7.2		
Trial Lake	SNOTEL	9992	73	16.2	15.6	104%	22.0	141%	
Trial Lake	SC	9953							
Triple Peak	SNOTEL	8500	66	14.2	16.6	86%	15.4	93%	
Trout Creek	SNOTEL	9518	29	6.4	5.8	110%	9.9	171%	
Trout Lake #2	SC	9780							
Tsaile Canyon #1	SC	8160			5.7		11.2	196%	
Tsaile Canyon #3	SC	8920			7.8		9.9	127%	
Upper Joes Valley	SNOTEL	8596	31	8.1			10.7		
Upper San Juan	SNOTEL	10140	68	18.1	20.6	88%	25.9	126%	
Upper San Juan	SC	10200							
Upper Taylor	SNOTEL	10717	39	9.7	8.9	109%	13.2	148%	
Vail Mountain	SNOTEL	10310	48	14.2	11.9	119%	14.3	120%	
Vallecito	SNOTEL	10782	47	11.3	11.7	97%	14.8	126%	
Vasquez	SC	9600							
Wager Gulch	SNOTEL	11132	27	6.3			7.7		
Weminuche Creek	SNOTEL	10749	53	13.4	13.0	103%	17.1	132%	
Whiskey Creek	SC	9050			7.5		12.9	172%	
Whiskey Park	SNOTEL	9020	69	20.8	19.4	107%	27.7	143%	
White River #1	SNOTEL	8641	39	10.6	8.2	129%	12.5	152%	
Widtsoe #3	SNOTEL	9640	42	10.1	7.5	135%	12.1	161%	

Wilbur Bench	SNOTEL	9171	37	9.0	7.2	125%	12.3	171%
Willow Creek Pass	SC	9540						
Willow Creek Pass	SNOTEL	9523	38	9.0	9.6	94%	12.0	125%
Wolf Creek Peak	SNOTEL	9796	63	14.4			23.2	
Wolf Creek Summit	SNOTEL	10957	70	19.2	21.9	88%	27.1	124%
Wrigley Creek	SNOTEL	9327	28	6.4			10.9	
Wurtz Lower	SC	10690						
Yampa View	SC	8200						

Basin Index						100%		133%
# of sites						130		130

Chuska - Defiance	Network	Elevation (ft)	Depth (in)	SWE (in)	Median (in)	% Median	Last Year SWE (in)	Last Year % Median
Beaver Spring	SNOTEL	9255	36	10.7	8.2	130%	12.8	156%
Beaver Spring	SC	9220			6.7			
Bowl Canyon	SC	8980			7.6		9.4	124%
Fluted Rock	SC	7800			3.2			
Hidden Valley	SC	8480			5.5		9.0	164%
Missionary Spring	SC	7940			3.3		6.6	200%
Navajo Whiskey Ck	SNOTEL	9064	40	12.0	7.7	156%	15.2	197%
Tsaile Canyon #1	SC	8160			5.7		11.2	196%
Tsaile Canyon #3	SC	8920			7.8		9.9	127%
Whiskey Creek	SC	9050			7.5		12.9	172%

Basin Index						143%		176%
# of sites						2		2