

State Specific Training Module for Nevada 2023

Purpose of this Module

This module will provide some general information that TSPs need to conduct conservation planning in our state. This information is general in nature so the TSP may need to follow up with additional reading or training to make sure they have the knowledge, skill, licenses and certifications to conduct conservation planning in this state.

Review of State Laws

Cultural Resources

- Burial Law (Protection of Indian Burial Sites (Nev. Rev. Stat. Ann.§ 383.160).—This law covers human remains found on private and state lands in Nevada: <https://www.leg.state.nv.us/NRS/NRS-383.html>
- All cultural resource compliance certifications in Nevada will be completed by the NRCS State Cultural Resource Specialist (SCRS); field work will be completed by approved personnel.
- For information concerning NRCS cultural resource work in Nevada contact the Nevada NRCS State Cultural Resource Specialist.

Nutrient Management

- This state requires that the competence of all nutrient management planners be certified by the Nevada Division of Environmental Protection.

Review of State FOTG Requirements

Vegetative Practices

- Wind can be a major factor in establishing vegetation in this state. Seedlings and plantings should be protected from the wind.
- Planting dates in the drier regions of the state should be delayed to September or later when it is more likely to receive rainfall.

Engineering

- State Statute NRS 625.050 when engineering license is need for planning conservation practices in Nevada.
- Contact the Nevada NRCS State Engineer for current listing of engineering practices requiring professional engineering licenses in the state of Nevada.

Review of Important Resource Issues

Threatened, Endangered, & Candidate Species

- A candidate species of upland bird, the Greater Sage grouse, is common in the Northern 2/3 of the state. Along the California Nevada state line there is also a separate Distinct Population Segment of Greater Sage grouse. The bird may be present on hay, pasture, or range land; uses and impacts to the species should be a consideration when planning within this area. Contact the NRCS State Biologist or the Nevada Department of Wildlife Department for additional information on planning consideration for the Greater Sage grouse.



Photo by McEwan

- Lahontan cutthroat trout, a native fish species listed as threatened, are found in cold water streams, rivers, and lakes of Northern Nevada.



USFWS-Illustration by Joseph R. Tomelleri

- Desert tortoise, a native reptile species listed as threatened, are found in the Mojave Desert area of Southern Nevada and spend up to 95% of their life underground.



Photo Credit: DTRO/USFWS

Sources of Species Information in Nevada

- **USFWS Endangered Species -Nevada Protected Species:**

Southern Office: <https://www.fws.gov/office/southern-nevada-fish-and-wildlife/species>

General Information (Search): <https://www.fws.gov/species>

- **Nevada Natural Heritage Database:**

- <http://heritage.nv.gov/>

- **The Nevada Wildlife Action Plan:**

- <https://www.ndow.org/blog/nevada-wildlife-action-plan/>

- **Nevada Department of Wildlife-Species Information:**

- <https://www.ndow.org/species-information/>

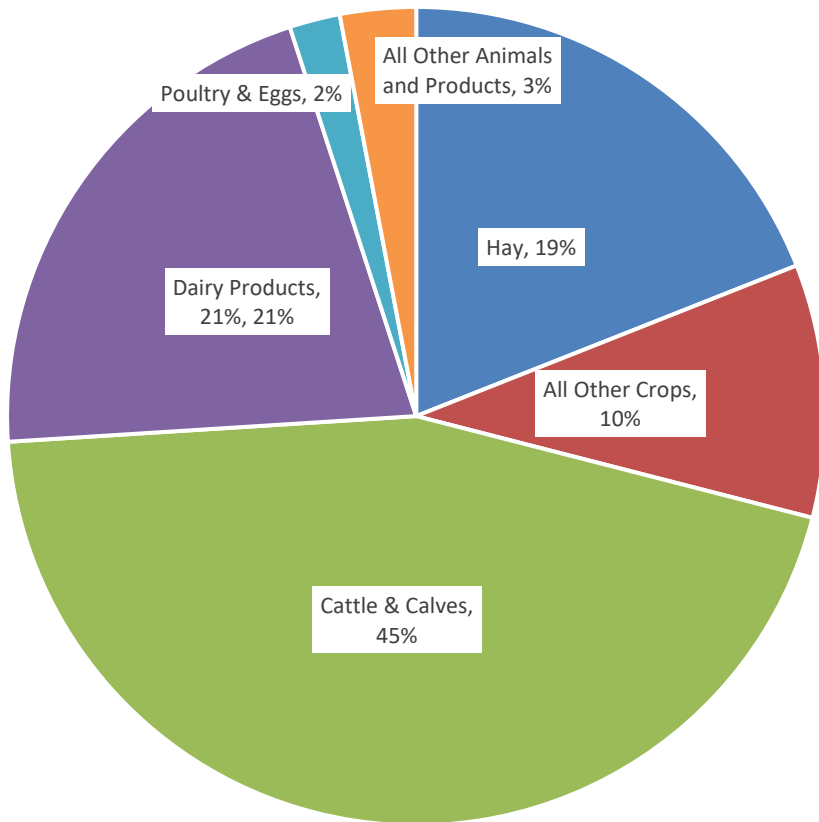


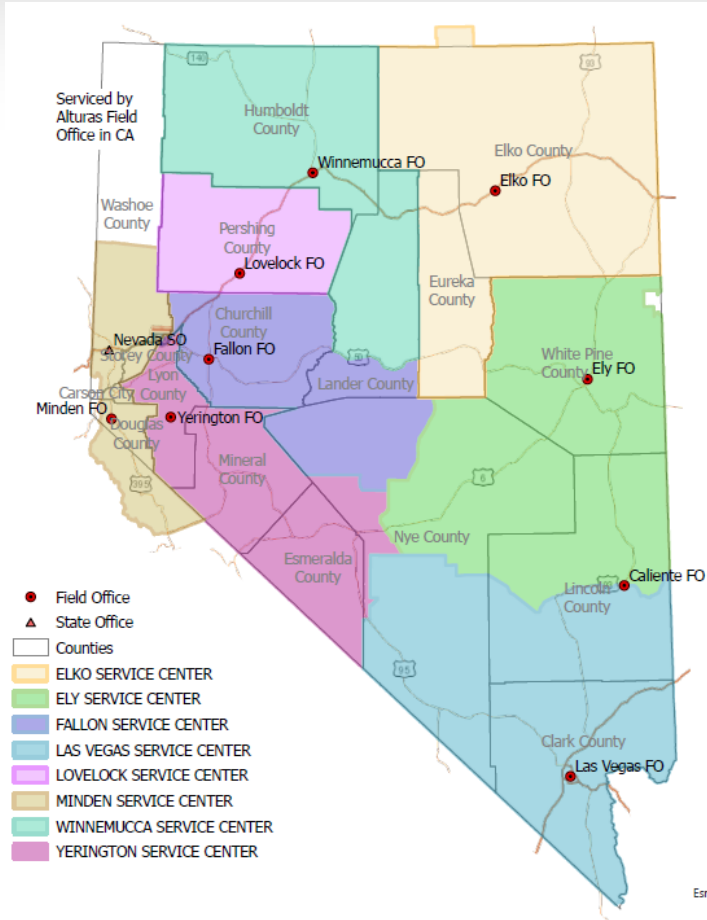
USDA Photo



Nevada Department of Wildlife Photo

Review of Major Land Uses or Agronomic Practices





The 5 top producing counties are Elko, Humboldt, Eureka, Washoe, and Pershing.

- 17 Counties
- 110,572 Square Miles
- 3.144 Million People
- 70,264,320 acres total, Ranks 7th in US
- < 8 inches Annual Rainfall
- 10 Major Land Resource Areas

Farm Information

- 86.1% Federally owned – Bureau of Land Management (BLM) & United States Department of Fish and Wildlife (USFS).
- 1.6% tribal – 28 federally recognized American Indian tribes and tribal bands:

<https://nevadasindianterritory.com/>

Land Ownership

- 3,423 Farms
- 1,790 Acres, average
- 3.144 Million acres in farms
- 42 Acres average farm size

Farm Information

- 814,000 Acres In Cropland
 - 41% in sales
- 653,000 Acres Harvested Cropland
- 790,425 acres Irrigated Cropland
- Ranks 44th In US for Product Market Value

Cropland Information

- 59% of the sales share for state
- 4,830,039 acres in pastureland

Livestock Information

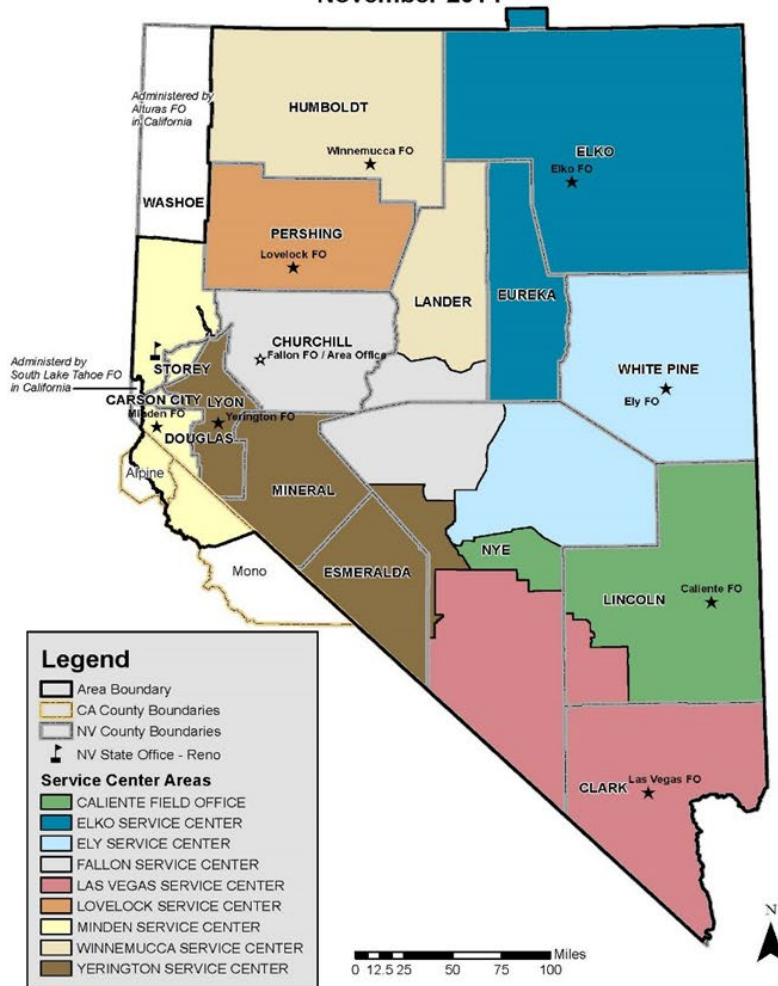
Livestock	Head	Value of Product(s)
Cattle, Beef with Calves	245,000	
Cattle, Dairy with Calves	30,000	
Sheep, with lambs	59,000	
Hogs	2,500	
Milk Production (#/head)	24,813	
Milk Production (\$)		\$200,882,000
Milk Production (#)		794,000,000

Nevada Total Cash Receipts, Percent by Commodity

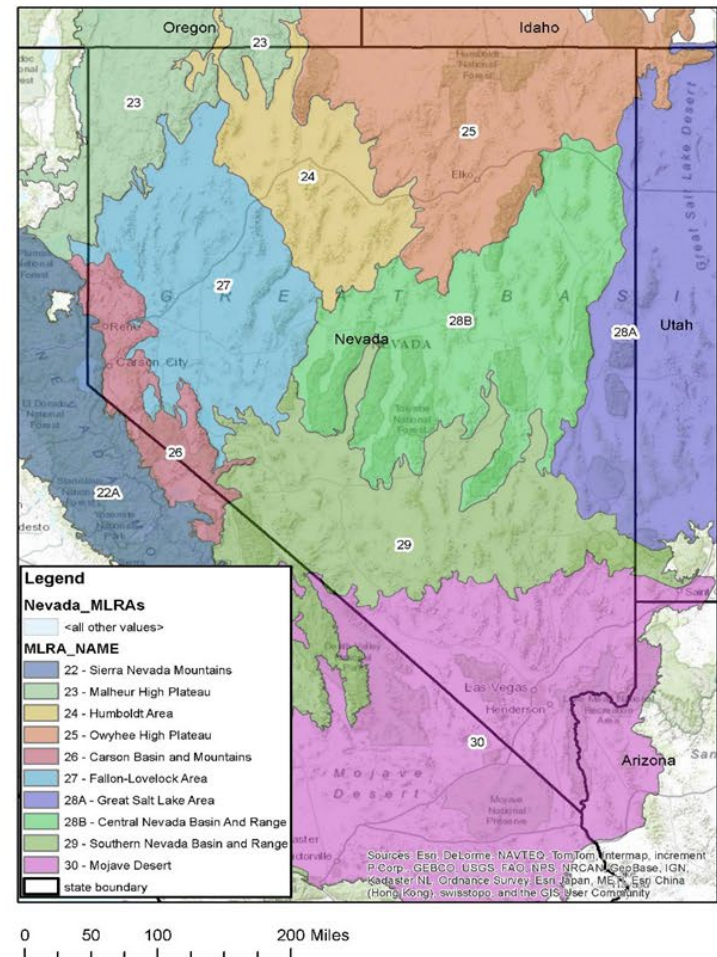
- Meat Animals – 39.8%
- Feed Crops – 25.9%
- Dairy Products (milk): 20.8%
- All Other Crops: 7.7%
- Misc. Livestock: 3%
- Poultry & Eggs: 2.7%

Review of NRCS in Nevada

Nevada NRCS Field Office Service Areas
November 2014



Nevada MLRAs



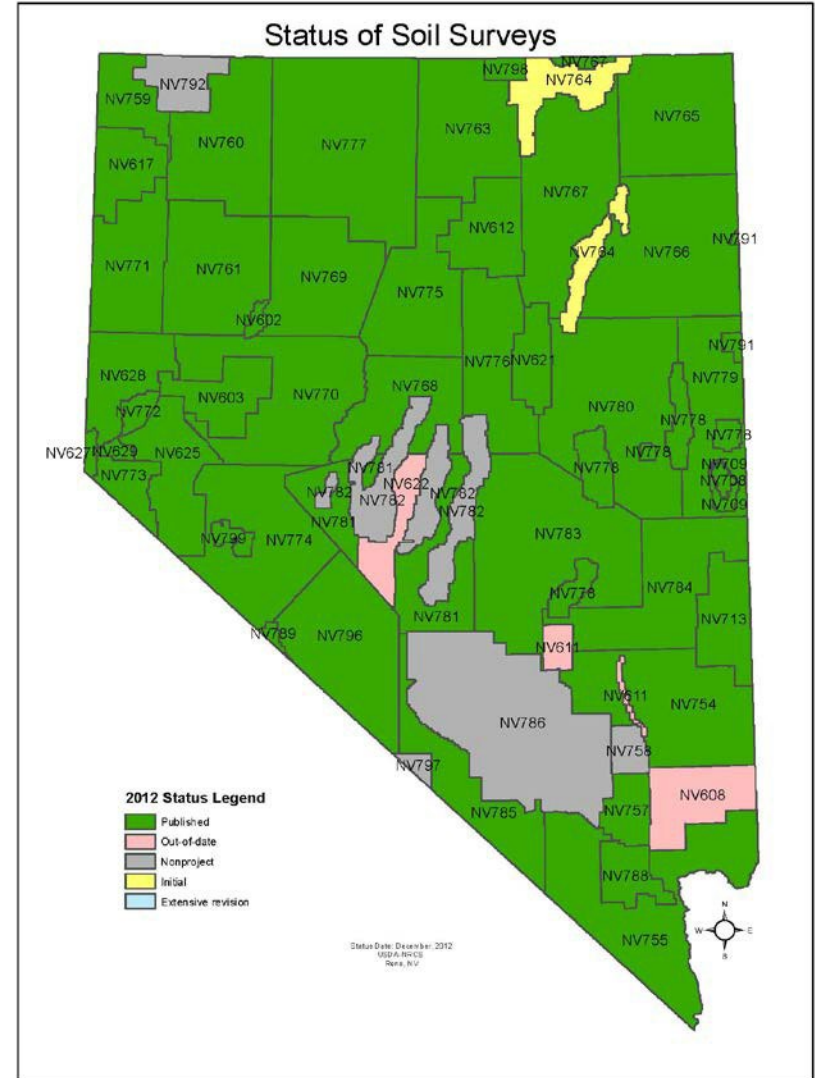
Major Resource Concerns

- **Water quality and quantity**
 - **Cropland 859,400 acres (1982) > 691,600 acres (2012)**
- **Plant health & vigor- Drought; Wildfires: 1999 – 1.9 million, 2006 - 1.5 million; Invasive annual plants – cheatgrass, red brome; Pinyon/juniper expansion; Feral horses/burros**
- **Wind erosion – abandoned farm land; wildfire areas**



Vary by MLRA

SSA ID	Area Name
NV602	LOVELOCK AREA, NEVADA, PARTS OF PERSHING AND CHURCHILL COUNTIES
NV603	FALLON- FERNLEY AREA, NEVADA, PARTS OF CHURCHILL, LYON, STOREY AND WASHOE COUNTIES
NV608	VIRGIN RIVER AREA, NEVADA AND ARIZONA
NV611	PAHRANAGAT-PENOYER AREAS, NEVADA, PARTS OF LINCOLN AND NYE COUNTIES
NV612	TUSCARORA MOUNTAIN AREA, NEVADA, PARTS OF ELKO, EUREKA AND LANDER COUNTIES
NV617	SURPRISE VALLEY-HOME CAMP AREA, CALIFORNIA-NEVADA
NV621	DIAMOND VALLEY AREA, NEVADA, PARTS OF ELKO, EUREKA AND WHITE PINE COUNTIES
NV622	BIG SMOKY VALLEY AREA, NEVADA, PART OF NYE COUNTY
NV625	LYON COUNTY AREA, NEVADA
NV627	Tahoe Basin Area, California and Nevada
NV628	WASHOE COUNTY, NEVADA, SOUTH PART
NV629	CARSON CITY AREA, NEVADA
NV708	HUMBOLDT NATIONAL FOREST, NEVADA
NV709	HUMBOLDT NATIONAL FOREST, NEVADA
NV713	MEADOW VALLEY AREA, NEVADA, PART OF LINCOLN COUNTY
NV754	LINCOLN COUNTY, NEVADA, SOUTH PART
NV755	CLARK COUNTY AREA, NEVADA
NV757	DESERT NATIONAL WILDLIFE REFUGE AREA, NEVADA, SOUTH PART
NV758	DESERT NATIONAL WILDLIFE REFUGE AREA, NEVADA, NORTH PART
NV759	WASHOE COUNTY, NEVADA, NORTH PART
NV760	HUMBOLDT COUNTY, NEVADA, WEST PART
NV761	PERSHING COUNTY, NEVADA, WEST PART
NV763	NORTHWEST ELKO COUNTY AREA, NEVADA, PART OF ELKO AND EUREKA COUNTIES
NV764	HUMBOLDT NATIONAL FOREST AREA, NEVADA, NORTH PART, PARTS OF ELKO AND WHITE PINE COUNTIES
NV765	ELKO COUNTY, NEVADA, NORTHEAST PART
NV766	ELKO COUNTY, NEVADA, SOUTHEAST PART
NV767	ELKO COUNTY, NEVADA, CENTRAL PART
NV768	LANDER COUNTY, NEVADA, SOUTH PART
NV769	PERSHING COUNTY, NEVADA, EAST PART
NV770	CHURCHILL COUNTY AREA, NEVADA, PARTS OF CHURCHILL AND LYON COUNTIES
NV771	WASHOE COUNTY, NEVADA, CENTRAL PART
NV772	STOREY COUNTY AREA, NEVADA
NV773	DOUGLAS COUNTY AREA, NEVADA
NV774	MINERAL COUNTY AREA, NEVADA
NV775	LANDER COUNTY, NEVADA, NORTH PART
NV776	EUREKA COUNTY AREA, NEVADA
NV777	HUMBOLDT COUNTY, NEVADA, EAST PART
NV778	HUMBOLDT NATIONAL FOREST, NEVADA, SOUTH PART, PARTS OF LINCOLN, NYE, AND WHITE PINE COUNTIES
NV779	WHITE PINE COUNTY, NEVADA, EAST PART
NV780	WESTERN WHITE PINE COUNTY AREA, NEVADA, PARTS OF WHITE PINE AND EUREKA COUNTIES
NV781	NYE COUNTY, NEVADA, NORTHWEST PART
NV782	TOiyABE NATIONAL FOREST, NEVADA, CENTRAL PART, PARTS OF EUREKA, LANDER AND NYE COUNTIES
NV783	NYE COUNTY, NEVADA, NORTHEAST PART
NV784	Lincoln County, Nevada, North Part
NV785	NYE COUNTY, NEVADA, SOUTHWEST PART
NV786	ENERGY AND DEFENSE AREA, NEVADA, PARTS OF CLARK, LINCOLN AND NYE COUNTIES
NV788	LAS VEGAS VALLEY AREA, NEVADA, PART OF CLARK COUNTY
NV789	INYO NATIONAL FOREST, NEVADA AND CALIFORNIA, EAST PART
NV791	TOOELE AREA, UTAH - TOOELE COUNTY AND PARTS OF BOX ELDER, DAVIS AND HJAB COUNTIES, UTAH A
NV792	SHELDON ANTELOPE REFUGE AREA, NEVADA, PARTS OF HUMBOLDT AND WASHOE COUNTIES
NV796	ESMERALDA COUNTY, AREA, NEVADA
NV797	DEATH VALLEY NATIONAL PARK, CALIFORNIA / NEVADA
NV798	DUCK VALLEY INDIAN RESERVATION, IDAHO AND NEVADA
NV799	HAWTHORNE AMMUNITION PLANT, NEVADA, PART OF MINERAL COUNTY



Major Conservation Practices

- Irrigation Practices:
 - Irrigation System: sprinkler, surface/subsurface
 - Irrigation Pipeline
 - Field Ditch/Lining
 - Land Leveling
 - Pumping Plants
 - Structures for Water Control
- Brush Management
- Fence
- Range Planting
- Livestock Pipeline/Watering Facilities
- Prescribed Grazing
- Spring Developments
- Water Well
- Upland Wildlife Habitat Management

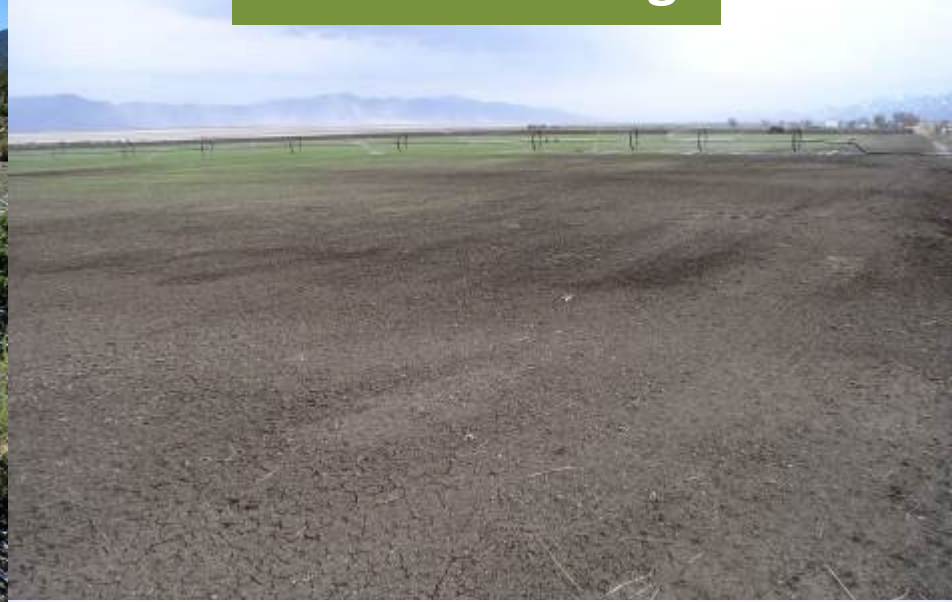


Irrigated Alfalfa under center pivots

Tree Removal - Mechanical



Pasture Planting



Fence



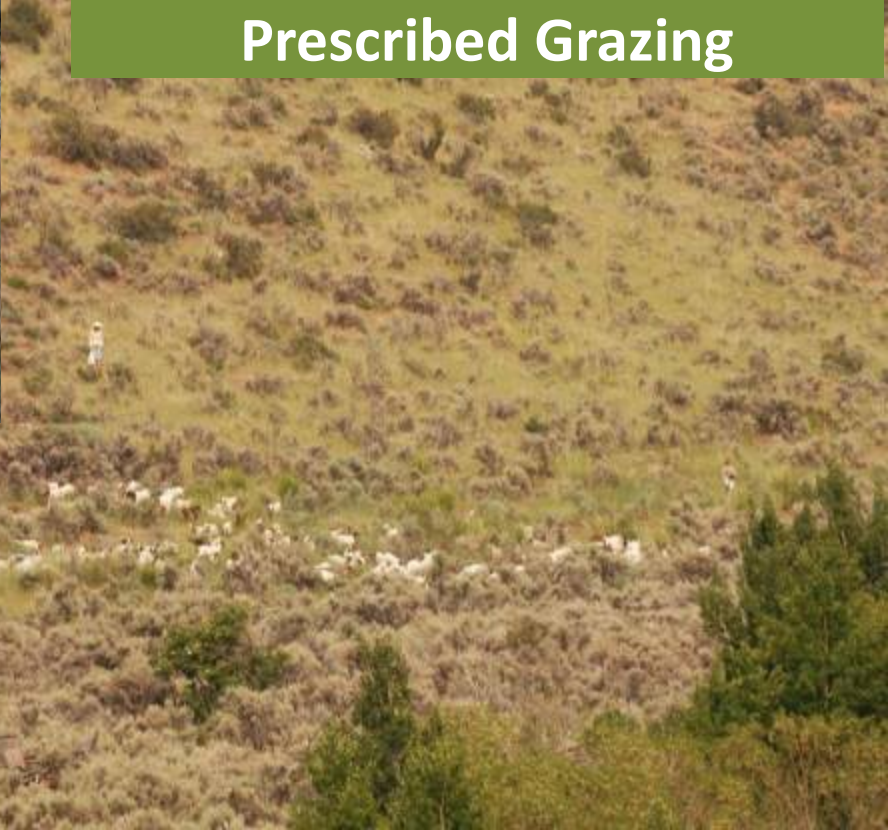
Chemical Brush Management





Mechanical Brush Management

Leafy Spurge Control –
Prescribed Grazing



Expected TSP Workflow

- The State Resource Conservationist (SRC) will be responsible for reviewing TSP conservation planning for the National Planner Certification.
- Subsequent conservation plans will be reviewed by the District Conservationist (DC) at the local USDA Service Center.
- The SRC will conduct plan reviews for TSP planner certification renewals.
- TSPs will work with the local District Conservationist to make sure the proper environmental evaluations (NRCS.CPA.52) are completed.

Additional References or Training

- **State Field Office Technical Guide:**
- [Field Office Technical Guide | NRCS – USDA](#)
- **Nevada Division of Water Resources:**
- <http://water.nv.gov/waterrights.aspx>
- **Nevada Department of Environmental Protection:**
- <http://ndep.nv.gov/>
- **Nevada Department of Agriculture:**
- <http://agri.nv.gov/>

Non-Discrimination Statement

In accordance with Federal civil rights law and U.S. Department of Agriculture (USDA) civil rights regulations and policies, the USDA, its Agencies, offices, and employees, and institutions participating in or administering USDA programs are prohibited from discriminating based on race, color, national origin, religion, sex, gender identity (including gender expression), sexual orientation, disability, age, marital status, family/parental status, income derived from a public assistance program, political beliefs, or reprisal or retaliation for prior civil rights activity, in any program or activity conducted or funded by USDA (not all bases apply to all programs). Remedies and complaint filing deadlines vary by program or incident.

Persons with disabilities who require alternative means of communication for program information (e.g., Braille, large print, audiotope, American Sign Language, etc.) should contact the responsible Agency or USDA's TARGET Center at (202) 720-2600 (voice and TTY) or contact USDA through the Federal Relay Service at (800) 877-8339. Additionally, program information may be made available in languages other than English.

To file a program discrimination complaint, complete the USDA Program Discrimination Complaint Form, AD-3027, found online at [How to File a Program Discrimination Complaint](#) and at any USDA office or write a letter addressed to USDA and provide in the letter all of the information requested in the form. To request a copy of the complaint form, call (866) 632-9992. Submit your completed form or letter to USDA by: (1) mail: U.S. Department of Agriculture, Office of the Assistant Secretary for Civil Rights, 1400 Independence Avenue, SW, Washington, D.C. 20250-9410; (2) fax: (202) 690-7442; or (3) email: program.intake@usda.gov.

USDA is an equal opportunity provider, employer, and lender.

Certificate of Completion

After viewing the State Specific Training module, please print and sign the completion certificate on the following slide.

The certificate is your acknowledgement that based on the information provided in this module, you have the proper knowledge, skills and ability to conduct planning in this State.

Within your NRCS Registry profile, enter the training and upload the signed certificate to verify completion.

STATE SPECIFIC TRAINING MODULE COMPLETION CERTIFICATE

I, _____ hereby verify I have viewed and understand the content of *[enter state name]* State
TSP Name
Specific Training Module and affirm I have the knowledge, skills, and ability to conduct conservation planning
services in this state.

TSP Signature

Date