

Red Hills to the Coast: Connecting Land and Water Regional Conservation Partnership Program (RCP)

Tall Timbers Research, Inc.

Project Overview

The Natural Resources Conservation Service (NRCS) is partnering with Tall Timbers Research, Inc. through the Regional Conservation Partnership Program (RCP) to implement the “Red Hills to the Coast: Connecting Land and Water” project. The multi-state project helps Florida and Georgia landowners in the Aucilla River and St. Marks River watersheds apply conservation practices that improve these areas for people and wildlife.

RCP funding will be available to eligible landowners through NRCS financial assistance for a systems approach using approved conservation practices to address resource concerns. Land and producer eligibility and all other program criteria for participation must be met to participate. Agricultural lands are eligible for enrollment in the initiative.

Goal

The goal of the “Red Hills to the Coast: Connecting Land and Water” RCP project is to implement innovative, effective and compelling solutions for primary resource concerns related to forestry, management practices and water quality in the St. Marks River and Aucilla River Watersheds.

Primary Resource Concerns

Primary resource concerns include fire management, terrestrial habitat, source water depletion, weather resilience, wind and water erosion, aquatic habitat, field sediment, and nutrient and pathogen loss.



Objectives

- Provide technical and financial assistance to all eligible producers and landowners, including historically underserved landowners, to improve their resource management.
- Help landowners to identify conservation activities that will improve their property and install appropriate innovative conservation practices.

Partners

- Tall Timbers Research, Inc.
- St. Marks National Wildlife Refuge
- Suwannee River Water Management District
- Apalachee Audubon Society
- Aucilla Research Institute
- Wakulla Environmental Institute

Conservation Practices

- 314 Brush Management
- 315 Herbaceous Weed Control
- 327 Conservation Cover
- 338 Prescribed Burning
- 342 Critical Area Planting
- 353 Monitoring Well
- 382 Fence
- 383 Fuel Break
- 391 Riparian Forest Buffer
- 394 Firebreak
- 420 Wildlife Habitat Planting
- 490 Tree/Shrub Site Preparation
- 580 Streambank and Shoreline Protection
- 612 Tree/Shrub Establishment
- 643 Restoration of Rare/Declining Natural Communities
- 645 Upland Wildlife Habitat Management
- 666 Forest Stand Improvement

Other practices may be added at the discretion of NRCS and the lead partner based on targeted resource concerns and land uses.

☐ **In Georgia:** Applications may be obtained and filed at the following Georgia NRCS county offices:

Brooks County
Thomasville Service Center
2557 East Pinetree Blvd.
Thomasville, GA 31792
(229) 226-3462, ext. 3

Grady County
Bainbridge Service Center
101 AG Lane, Box A
Bainbridge, GA 39817
(229) 246-5773, ext. 3

Tall Timbers may also be contacted for information related to the project at:

Tall Timbers, Inc.
13093 Hendry Beadel Road
Tallahassee, FL 32312
(850) 893-4153

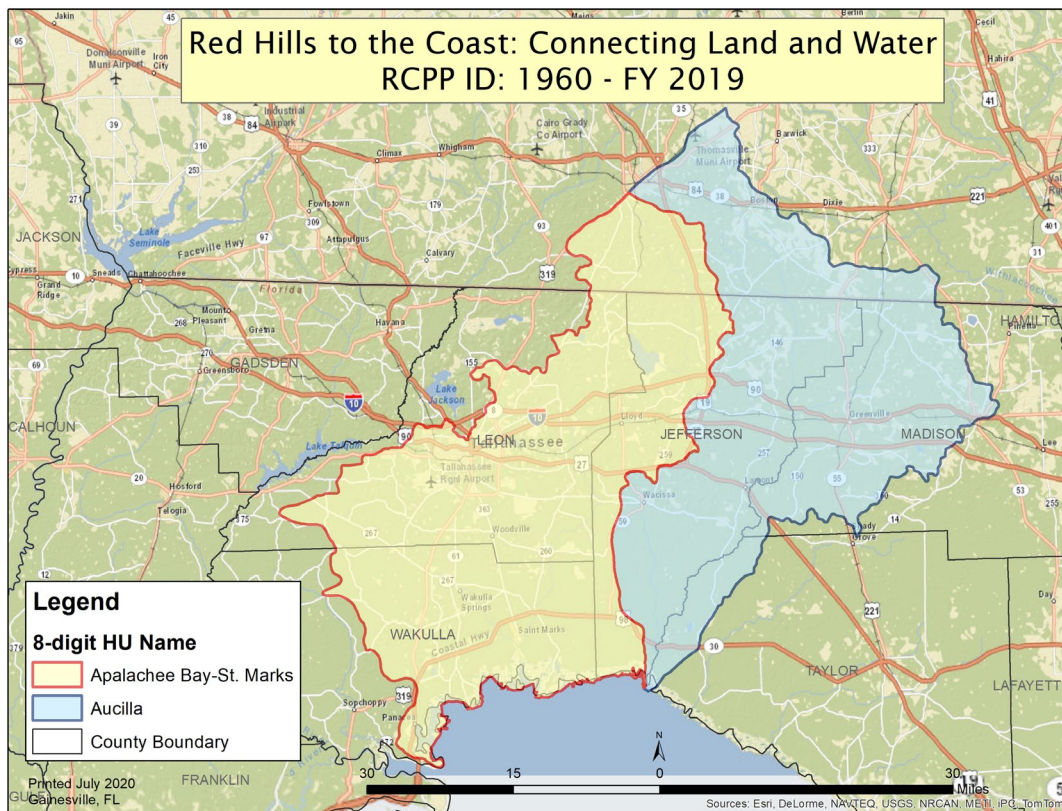
How to Apply for RCPP

NRCS and associated conservation partners will deliver this program collaboratively.

☐ **In Florida:** Applications may be obtained and filed at the following Florida NRCS county offices:

Jefferson, Leon, Wakulla Counties
Monticello Service Center
1250 N. Jefferson HWY 19 N
Monticello, FL 32344
(850) 997-2072, ext.3

Taylor and Madison Counties
Madison Service Center
1416 East US 90, Unit 2
Madison Florida 32340
(850) 973-6595, ext. 3



More Information:

For more information on RCPP, visit www.nrcs.usda.gov/programs-initiatives/rcpp-regional-conservation-partnership-program



USDA is an equal opportunity provider, employer, and lender.

Natural
Resources
Conservation
Service

nrcs.usda.gov/