



Natural
Resources
Conservation
Service

Arizona

Basin Outlook Report

February 1, 2024



Issued by

Terry Cosby
Chief
Natural Resources Conservation Service
U.S. Department of Agriculture

Released by

Keisha L. Tatem
State Conservationist
Natural Resources Conservation Service
Phoenix, Arizona

Basin Outlook Reports And Federal – State – Private Cooperative Snow Surveys

How forecasts are made

Most of the annual streamflow in Arizona originates as snowfall that has accumulated in the mountains during the winter and early spring. As the snowpack accumulates, hydrologists estimate the runoff that will occur when it melts. Measurements of snow water equivalent at selected manual snow courses and automated Snow Telemetry (SNOTEL) sites, along with precipitation and streamflow values, are used in statistical and simulation models to prepare runoff forecasts. These forecasts are coordinated between hydrologists in the Natural Resources Conservation Service (NRCS) the National Weather Service, and the Salt River Project.

Forecasts of any kind are not perfect. Streamflow forecast uncertainty arises from three primary sources: (1) uncertainty of future weather conditions, (2) uncertainty in the forecasting procedure, and (3) errors in the data. The forecast, therefore, must be interpreted not as a single value but rather as a range of values with specific probabilities of occurrence. The middle of the range is expressed by the 50% exceedance probability forecast, for which there is a 50% chance that the actual flow will be above, and a 50% chance that the actual flow will be below, this value. To describe the expected range around this 50% value, four other forecasts are provided, two smaller values (90% and 70% exceedance probability) and two larger values (30%, and 10% exceedance probability). For example, there is a 90% chance that the actual flow will be more than the 90% exceedance probability forecast.

The wider the spread among these values, the more uncertain the forecast. As the season progresses, forecasts become more accurate, primarily because a greater portion of the future weather conditions become known. This is reflected by a narrowing of the range around the 50% exceedance probability forecast. Users should take this uncertainty into consideration when making operational decisions by selecting forecasts corresponding to the level of risk they are willing to assume about the amount of water to be expected. If users anticipate receiving a lesser supply of water, or are concerned about having an adequate water supply, they may want to base their decisions on the 90% or 70% exceedance probability forecasts. On the other hand, if users anticipate receiving too much water, or are concerned about the threat of flooding, they may want to base their decisions on the 30% or 10% exceedance probability forecasts. Regardless of the forecast value users choose, they should be prepared to deal with either more or less water.



For more water supply and resource management information, contact:

Travis Kolling
Water Supply Specialist
230 N. First Ave., Suite 509
Phoenix, AZ 85003-1706
Phone: (602) 280-8834
Email: travis.kolling@az.usda.gov

The United States Department of Agriculture (USDA) prohibits discrimination in its programs on the basis of race, color, national origin, sex, religion, age, disability, political beliefs and marital or familial status. (Not all prohibited bases apply to all programs.) Persons with disabilities who require alternative means for communication of program information (Braille, large print, audiotape, etc.) should contact USDA's TARGET Center at 202-720-2600 (voice and TDD).

To file a complaint, write the Secretary of Agriculture, U.S. Department of Agriculture, Washington, D.C., 20250, or call 1-800-245-6340 (voice) or (202) 720-1127 (TDD). USDA is an equal employment opportunity employer.

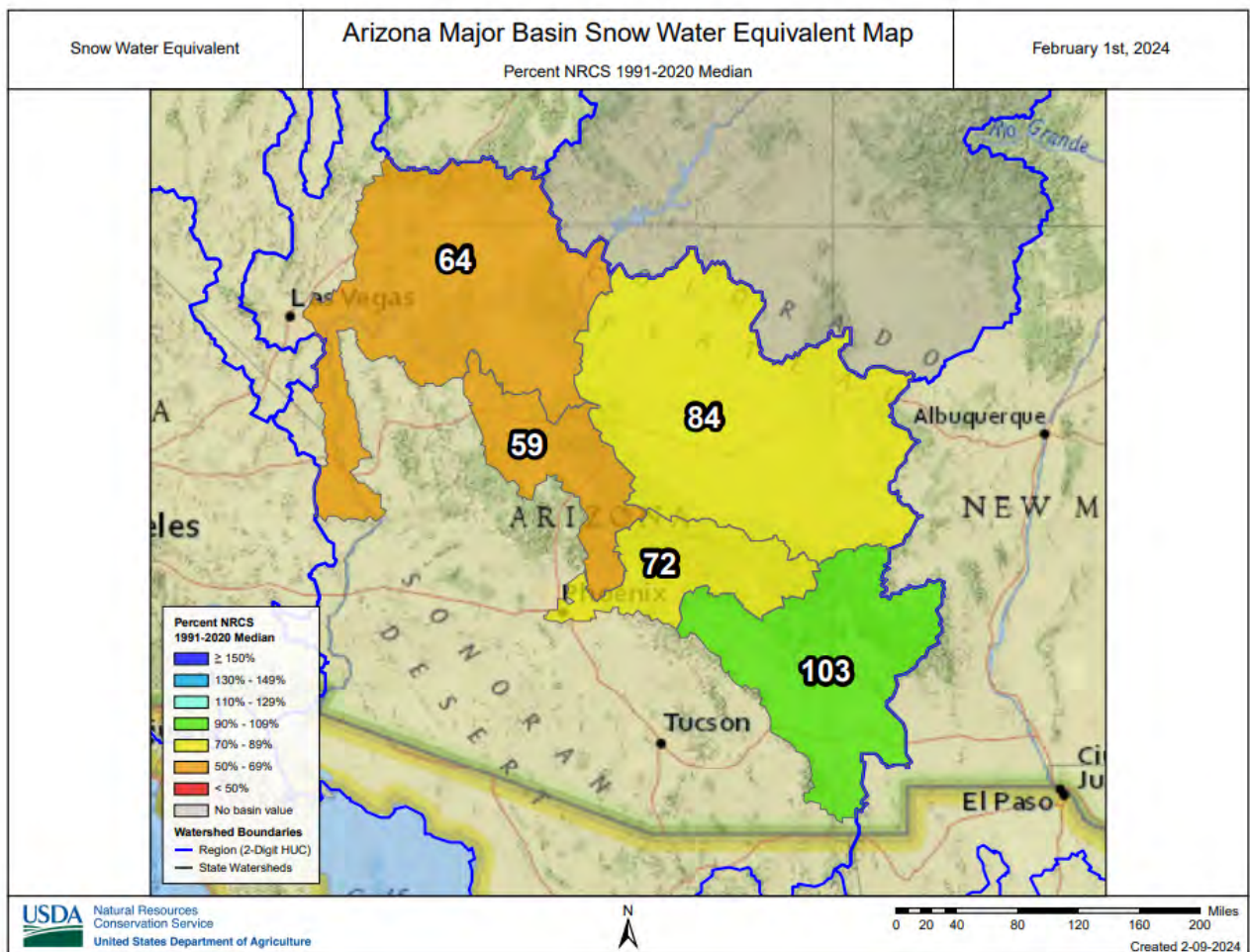
ARIZONA Basin Outlook Report as of February 1, 2024

SUMMARY

As of February 1, snowpack is at well below median to median levels throughout the major basins of the state. Precipitation for the month of January was above median to well above median in the major river basins. The Salt and Verde River reservoir system stands at 80 percent of capacity, while San Carlos Reservoir is at 38 percent of capacity. The forecast calls for well below median to above median runoff in the major basins for the spring runoff period.

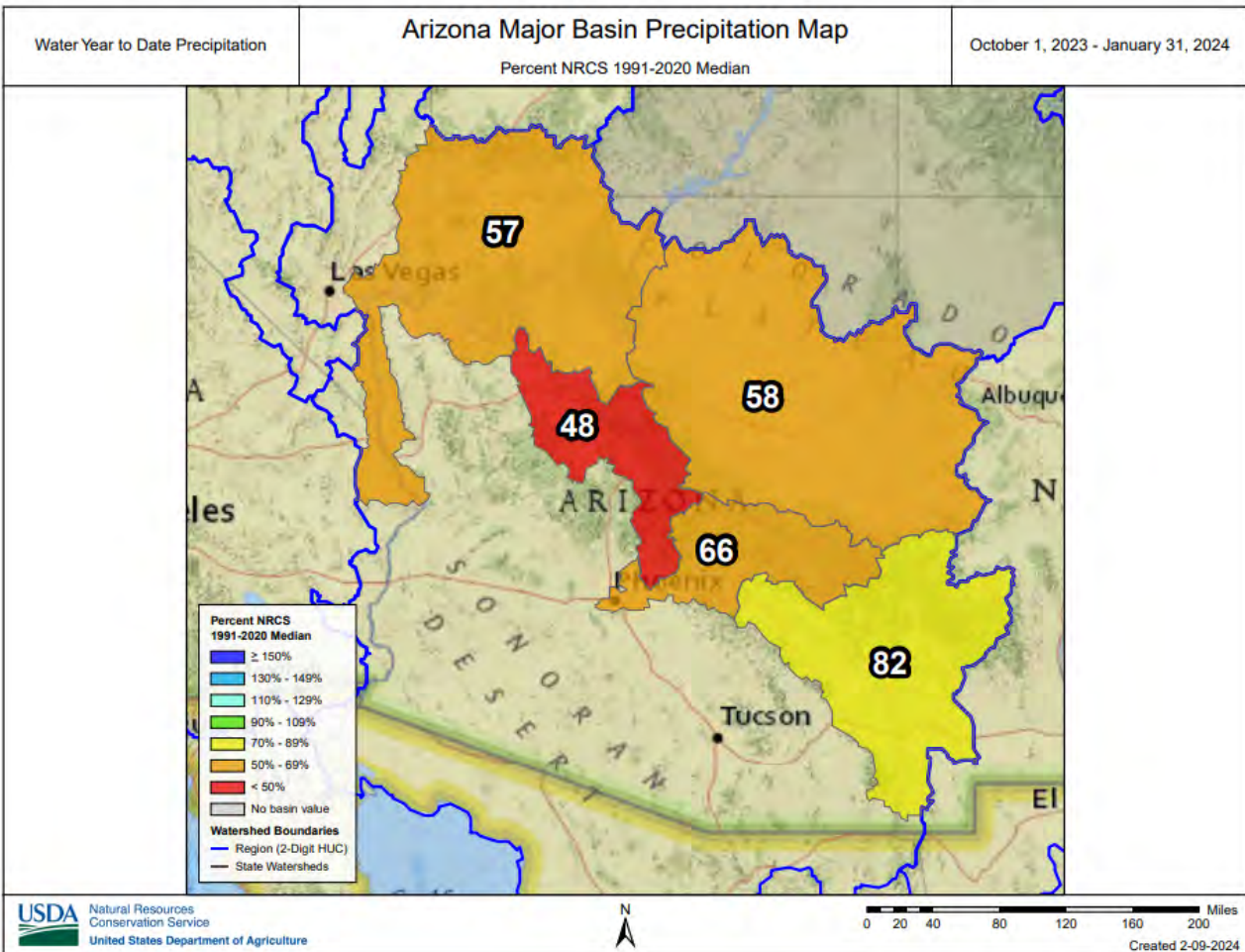
SNOWPACK

Snow water equivalent in the state's major river basins are well below median to median levels, ranging from 59 percent of median in the Verde River Basin to 103 percent of median in the Gila River Basin.



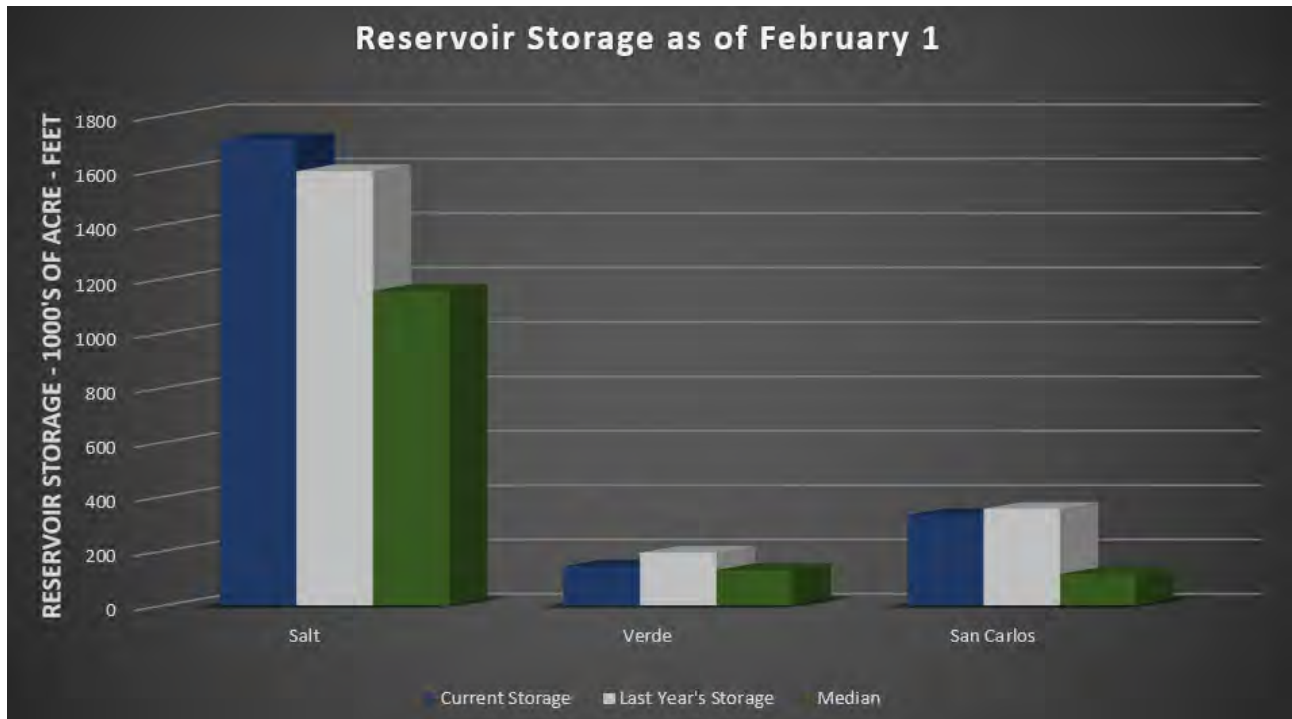
PRECIPITATION

Mountain data from NRCS SNOTEL sites and NWS Cooperator gages show that precipitation for January was above median to well above median in the major river basins, while cumulative precipitation since October 1 ranged from well below median to above median levels throughout the state.



RESERVOIR STORAGE

As of February 1, the Salt and Verde River reservoir system stands at 80 percent of capacity. San Carlos Reservoir is currently at 38 percent of capacity.

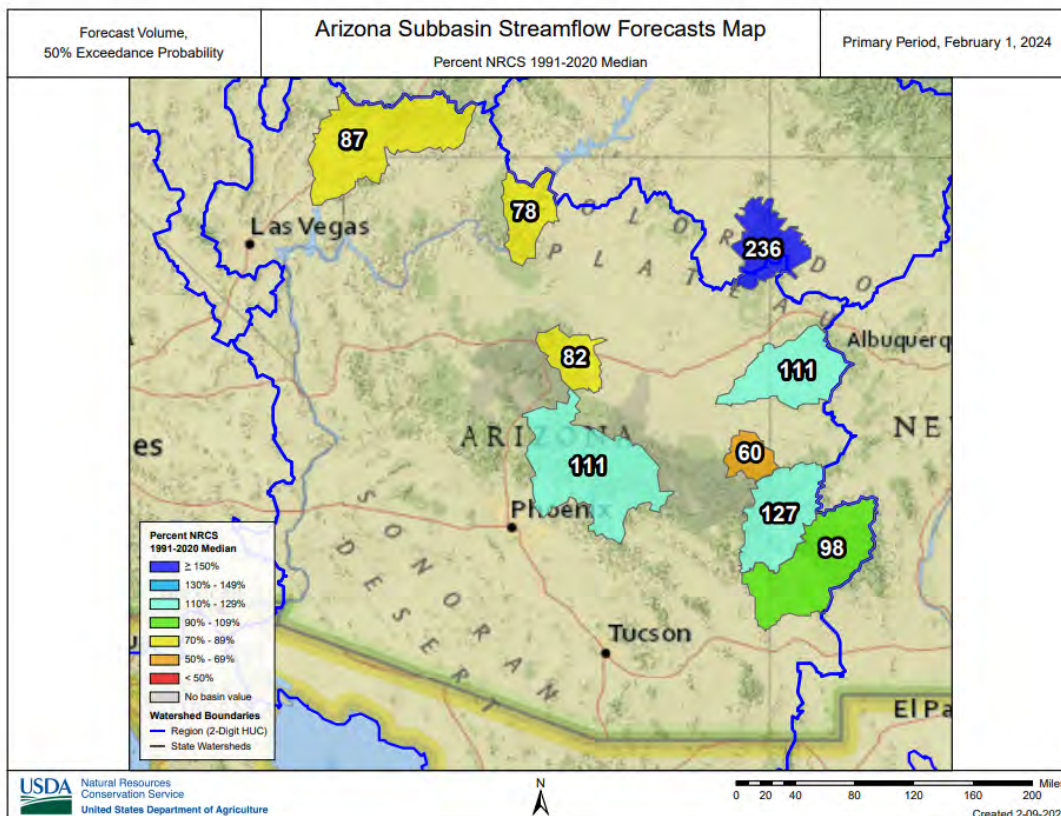
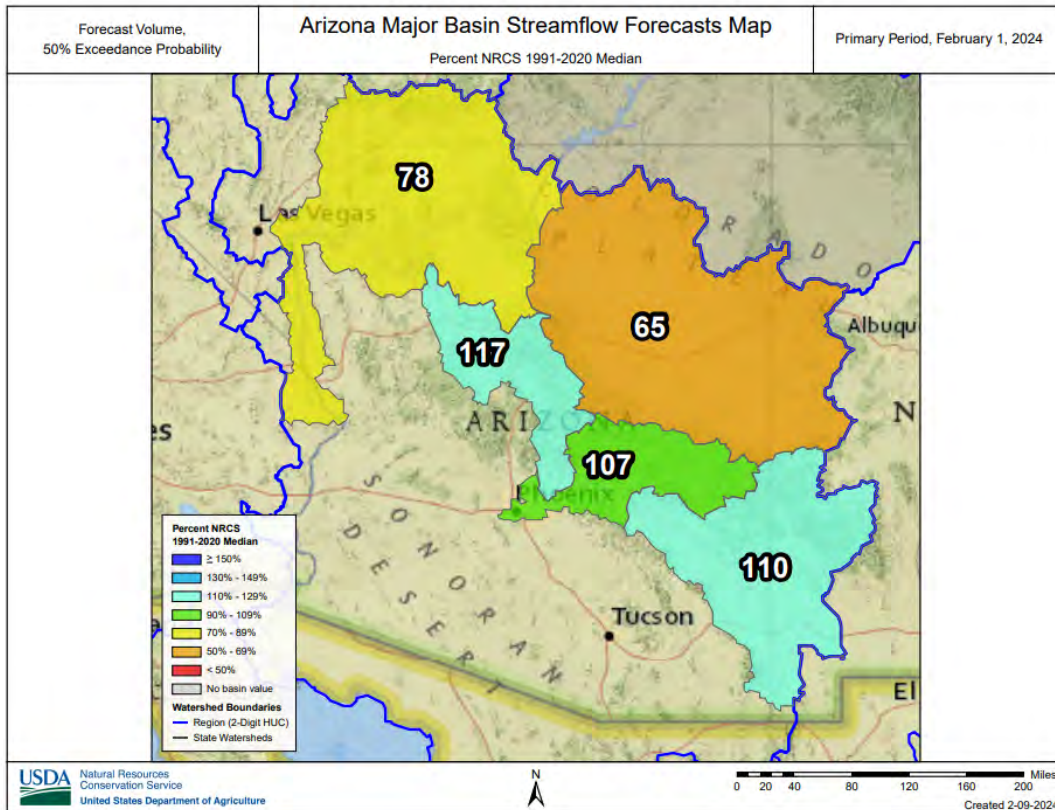


Key storage volumes displayed in thousands of acre-feet (x1000):

<u>Reservoir</u>	<u>Current Storage</u>	<u>Last Year Storage</u>	<u>30-Year Median</u>	<u>Storage Capacity</u>
Salt River System	1713.4	1597.3	1157.0	2025.8
Verde River System	145.0	194.2	130.5	287.4
San Carlos Reservoir	332.5	355.7	116.0	875.0
Lyman Lake	12.3	7.0	30.0	30.0
Lake Havasu	589.7	565.6	556.4	619.0
Lake Mohave	1670.0	1668.0	1658.0	1810.0
Lake Mead	9413.0	7459.0	15227.0	26159.0
Lake Powell	8138.1	5456.1	13471.0	24322.0

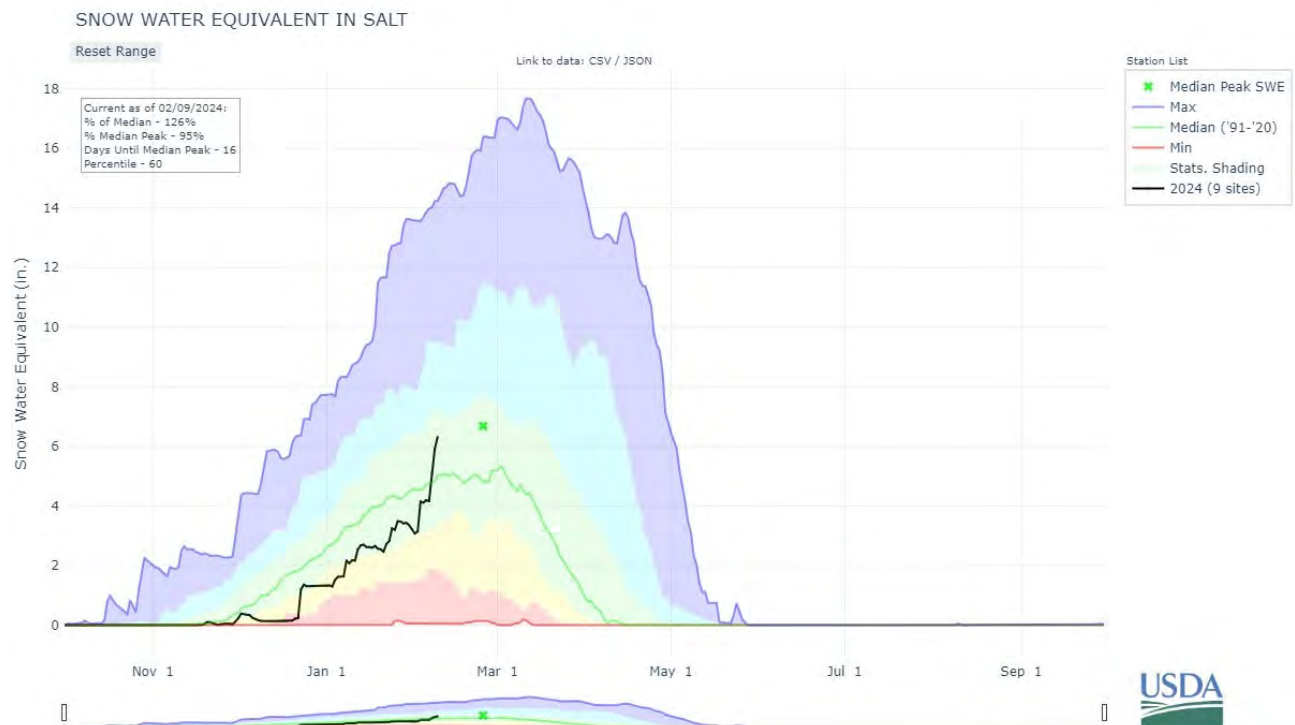
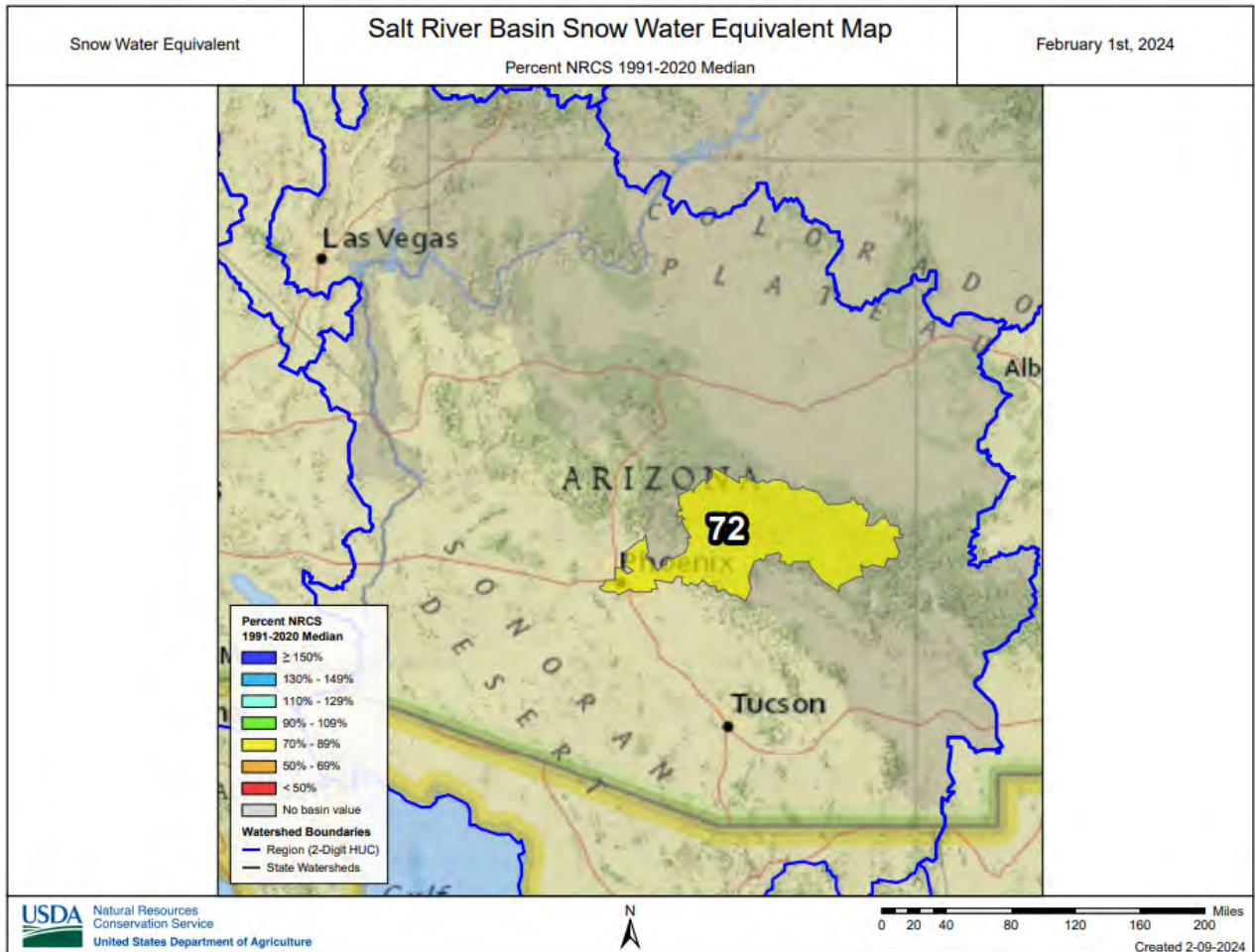
STREAMFLOW

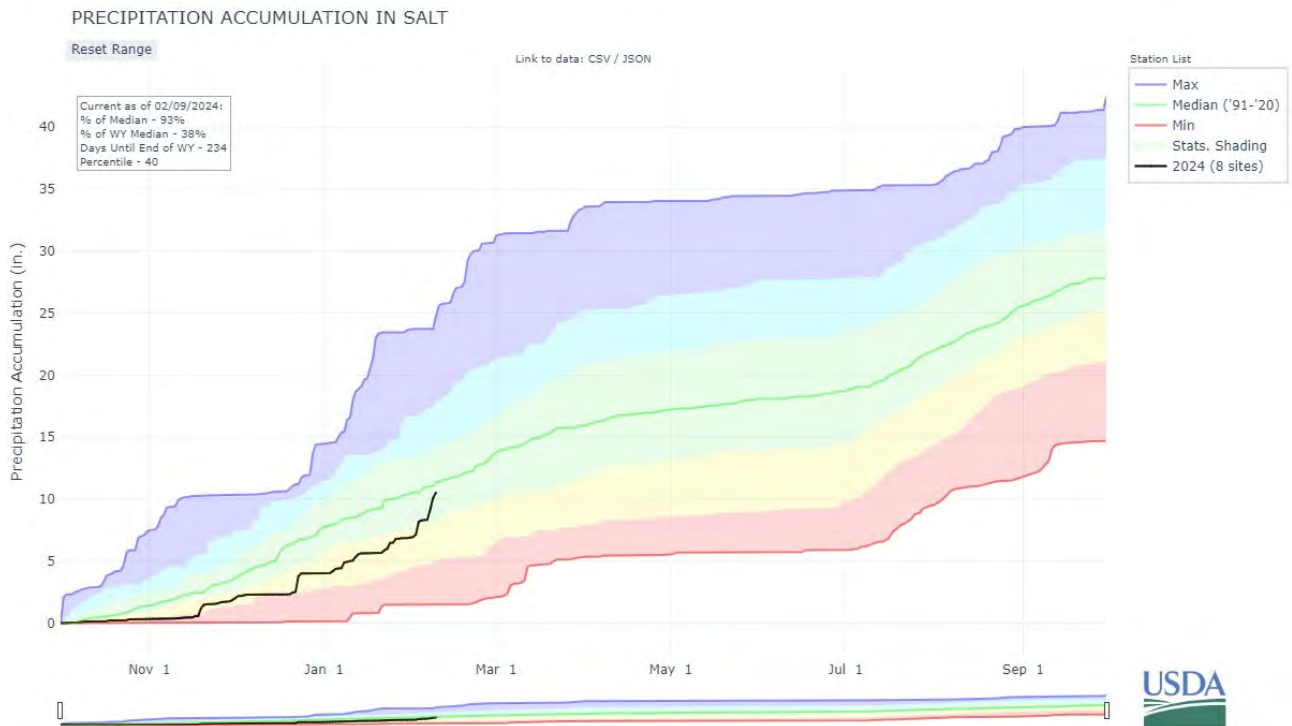
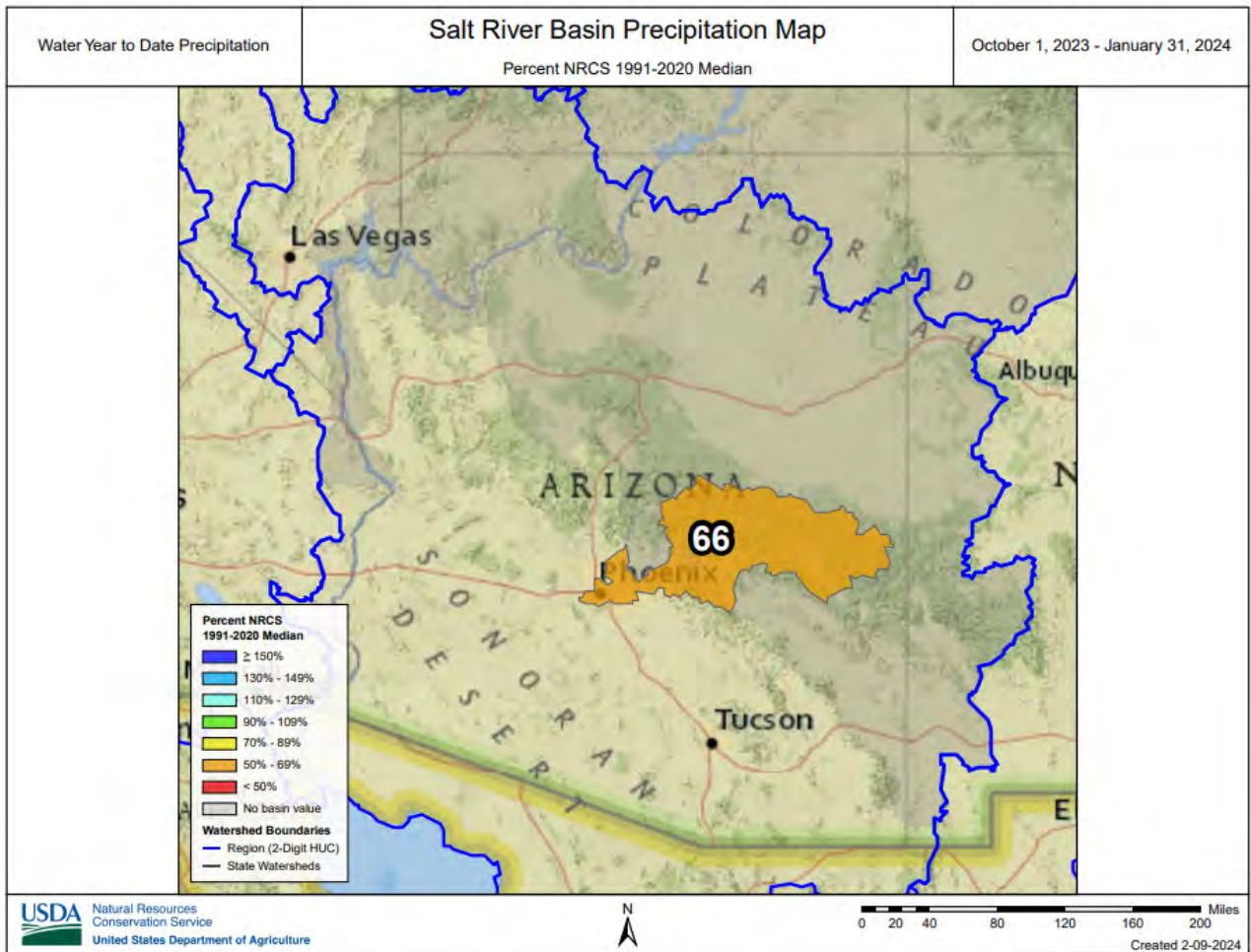
As of February 1, the forecast calls for well below to above median streamflow for the spring runoff period, ranging from 65 percent of median in the Little Colorado River Basin to 117 percent of median in the Verde River Basin. Please refer to the basin forecast tables found in this report for more information regarding water supply forecasts.

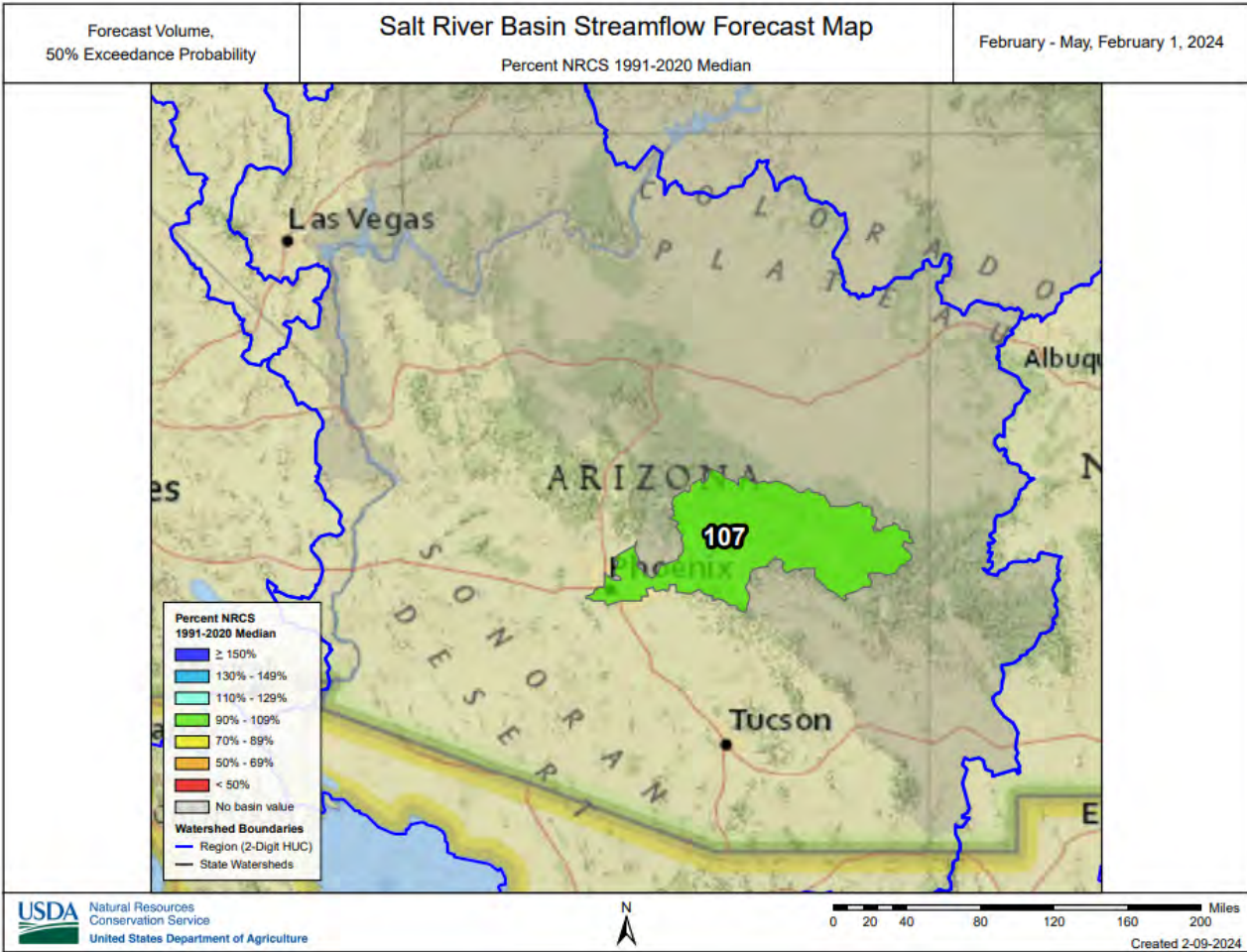


SALT RIVER BASIN as of February 1, 2024

Median streamflow levels are forecast for the basin. In the Salt River, near Roosevelt, the forecast calls for 104% of median streamflow through May, while at Tonto Creek, the forecast calls for 129% of median streamflow through May. Snow survey measurements show the Salt snowpack to be at 72% of median.







Data Current As of: 2/6/2024 12:01:05 PM

Salt
Streamflow Forecasts - February 1, 2024

Forecast Exceedance Probabilities For Risk Assessment
Chance that actual volume will exceed forecast

Salt	Forecast Period	90% (KAF)	70% (KAF)	50% (KAF)	% Median	30% (KAF)	10% (KAF)	30yr Median (KAF)
Salt R nr Roosevelt	FEB	3.9	13.5	25	69%	42	78	36
	FEB-MAY	97	169	235	104%	310	460	225
	MAR-MAY	70	127	180	101%	245	370	179
Tonto Ck ab Gun Ck nr Roosevelt	FEB	0.39	2.2	4.7	73%	8.7	18	6.4
	FEB-MAY	8	23	40	129%	64	113	31

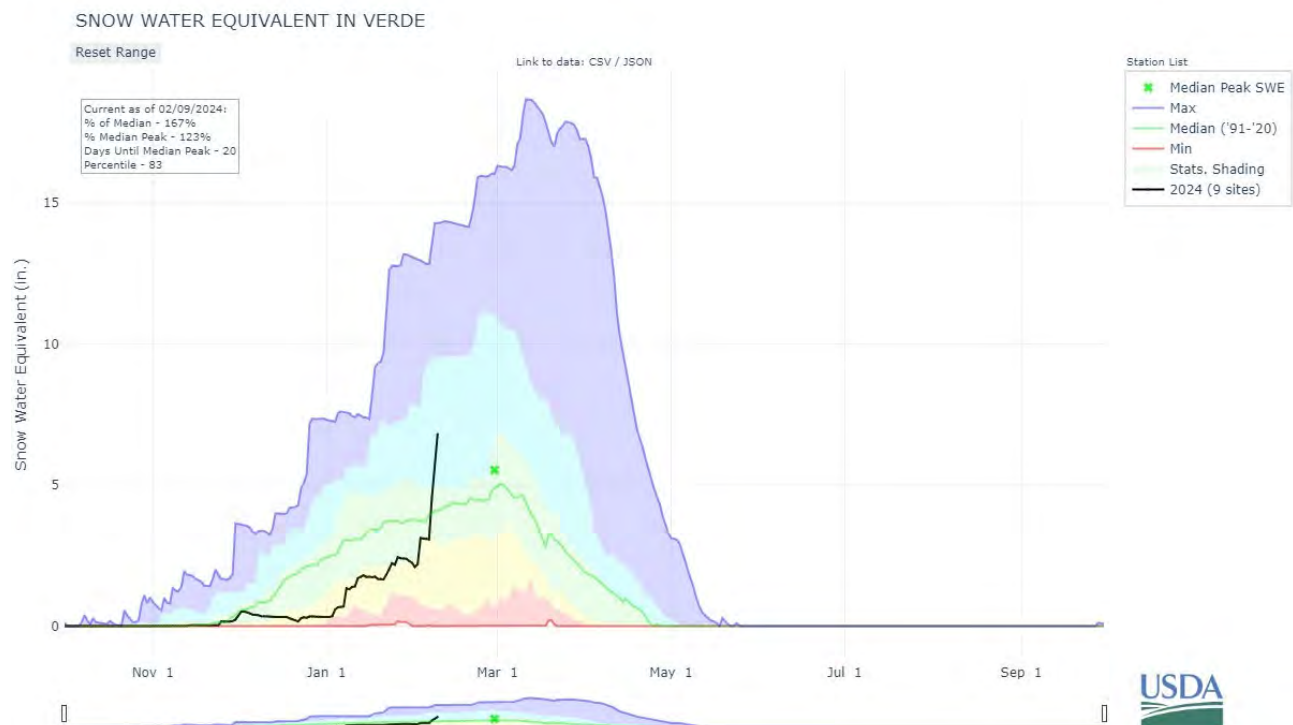
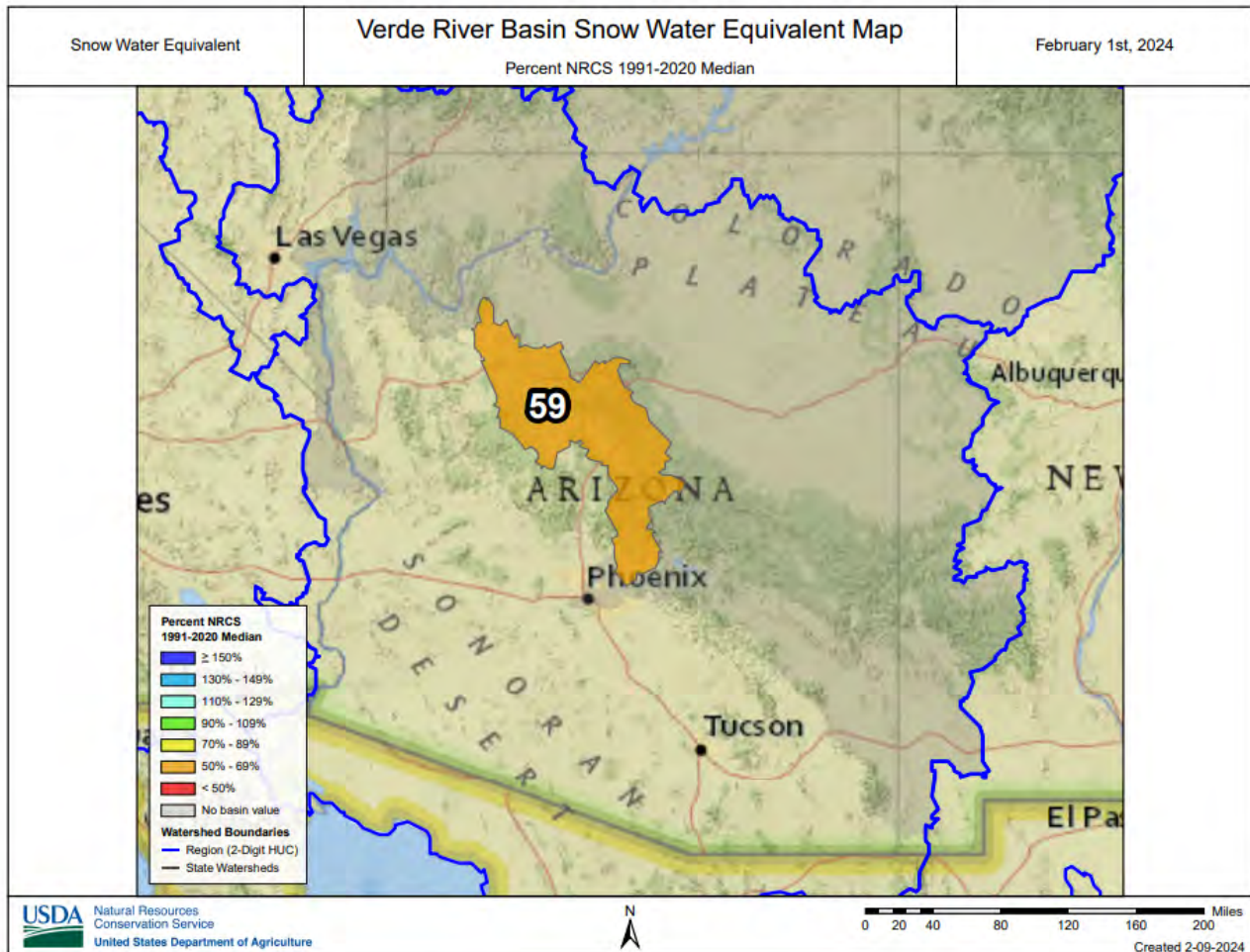
- 1) 90% And 10% exceedance probabilities are actually 95% And 5%
- 2) Forecasts are For unimpaired flows. Actual flow will be dependent On management of upstream reservoirs And diversions

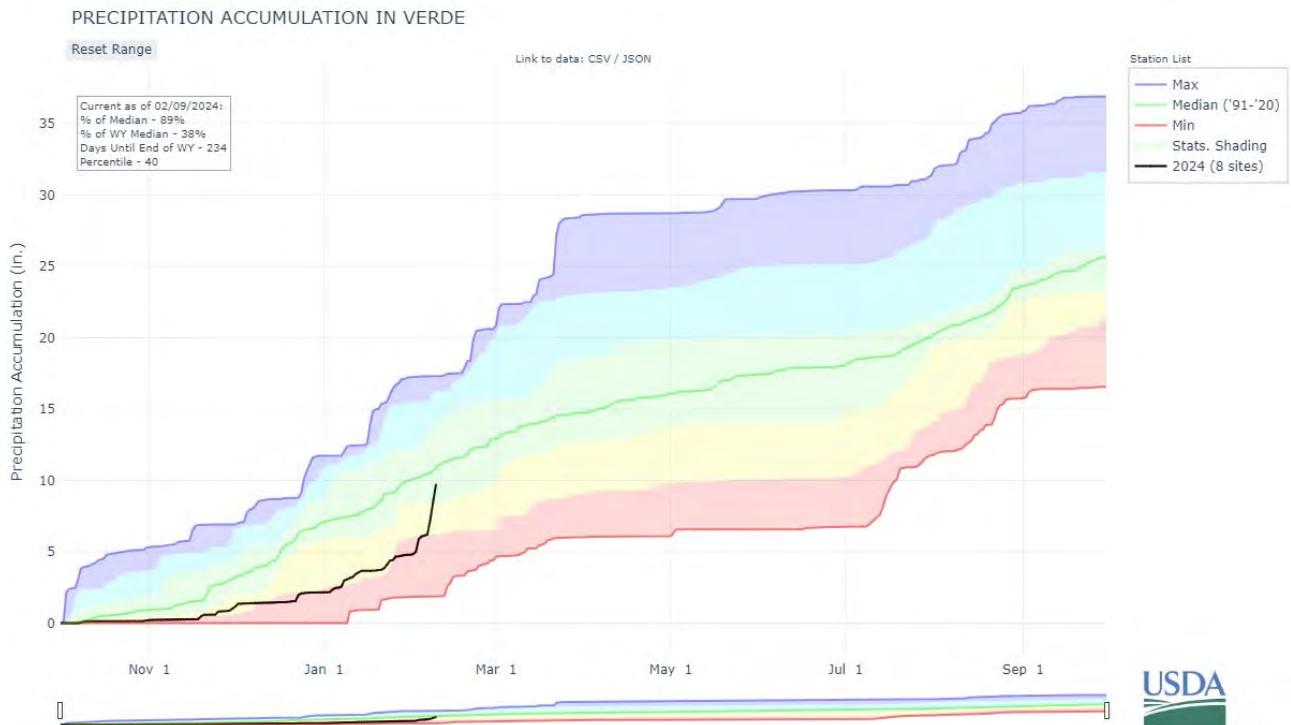
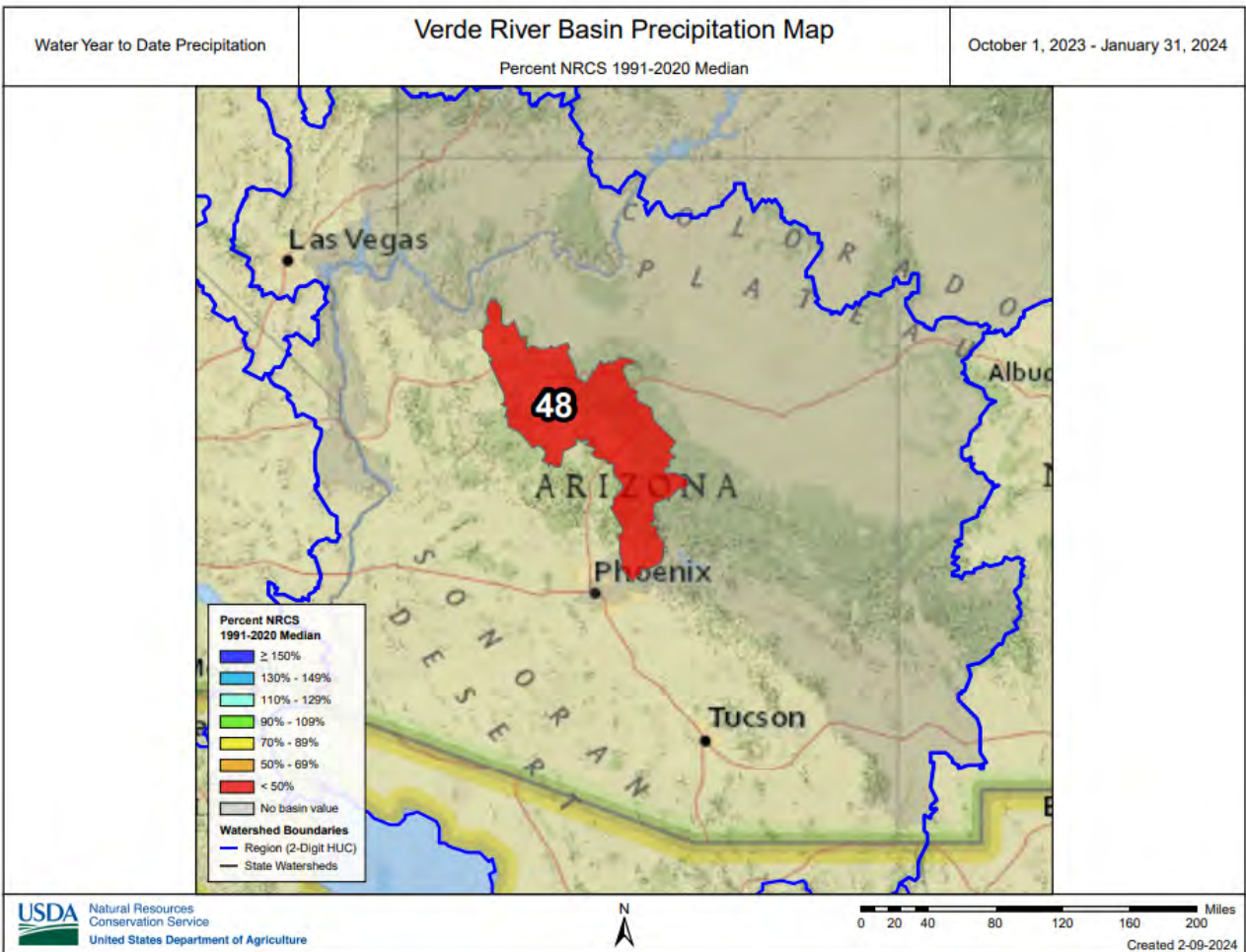
Reservoir Storage End of January, 2024	Current (KAF)	Last Year (KAF)	Median (KAF)	Capacity (KAF)
Salt River Reservoir System	1713.4	1597.3	1157.0	2025.8

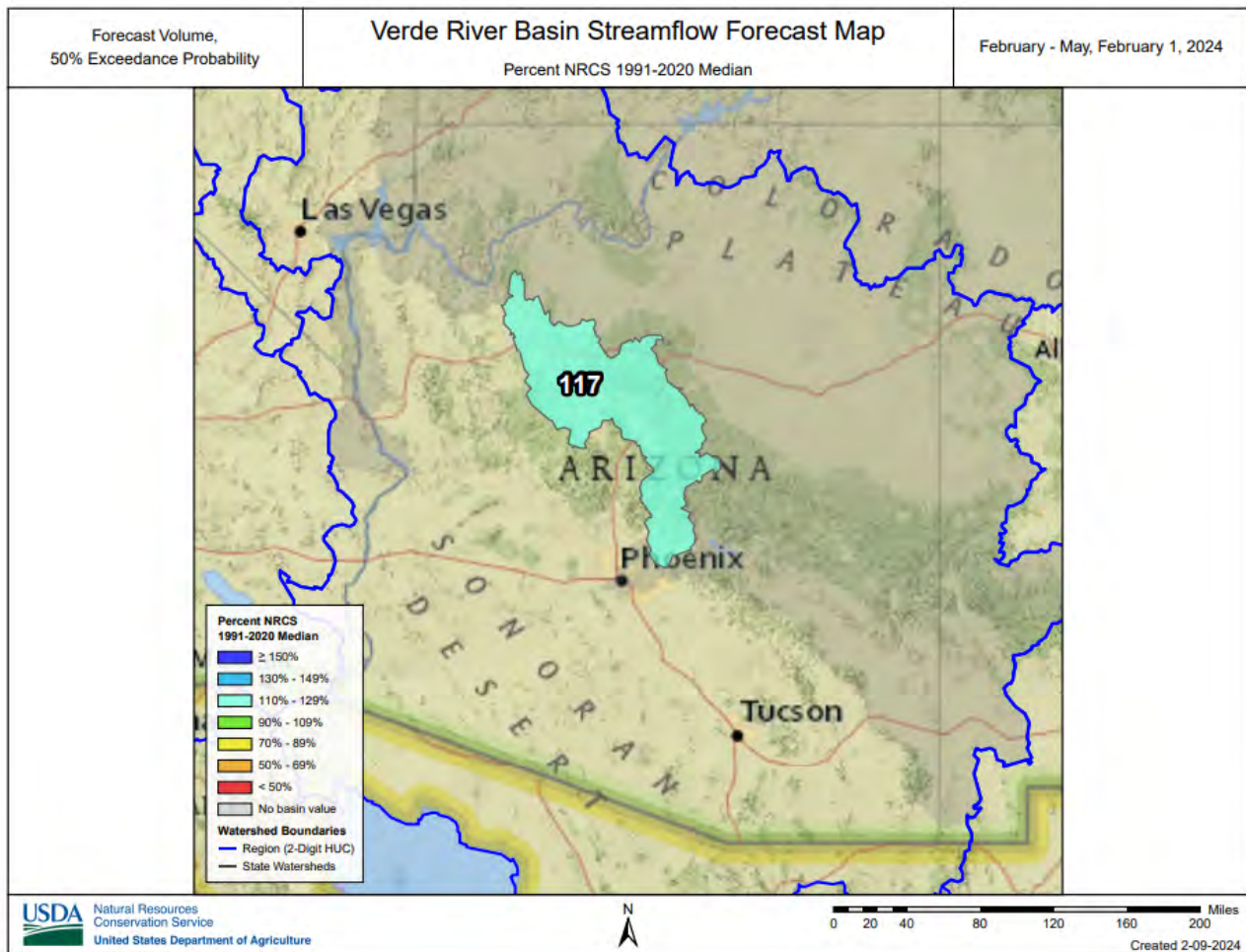
Watershed Snowpack Analysis February 1, 2024	# of Sites	% Median	Last Year % Median
Salt	12	72%	142%
Central Mogollon Rim	8	58%	181%
Upper Salt	9	81%	125%

VERDE RIVER BASIN as of February 1, 2024

Above median streamflow levels are forecast for the basin. In the Verde River above Horseshoe Dam, the forecast calls for 117% of median streamflow through May. Snow survey measurements show the Verde snowpack to be at 59% of median.







Data Current As of: 2/6/2024 12:01:07 PM

Verde Streamflow Forecasts - February 1, 2024

Forecast Exceedance Probabilities For Risk Assessment
Chance that actual volume will exceed forecast

Verde	Forecast Period	90% (KAF)	70% (KAF)	50% (KAF)	% Median	30% (KAF)	10% (KAF)	30yr Median (KAF)
Verde R bl Tangle Ck ab Horseshoe Dam	FEB	1.95	9	18.4	68%	33	66	27
	FEB-MAY	45	91	135	117%	192	300	115

1) 90% And 10% exceedance probabilities are actually 95% And 5%

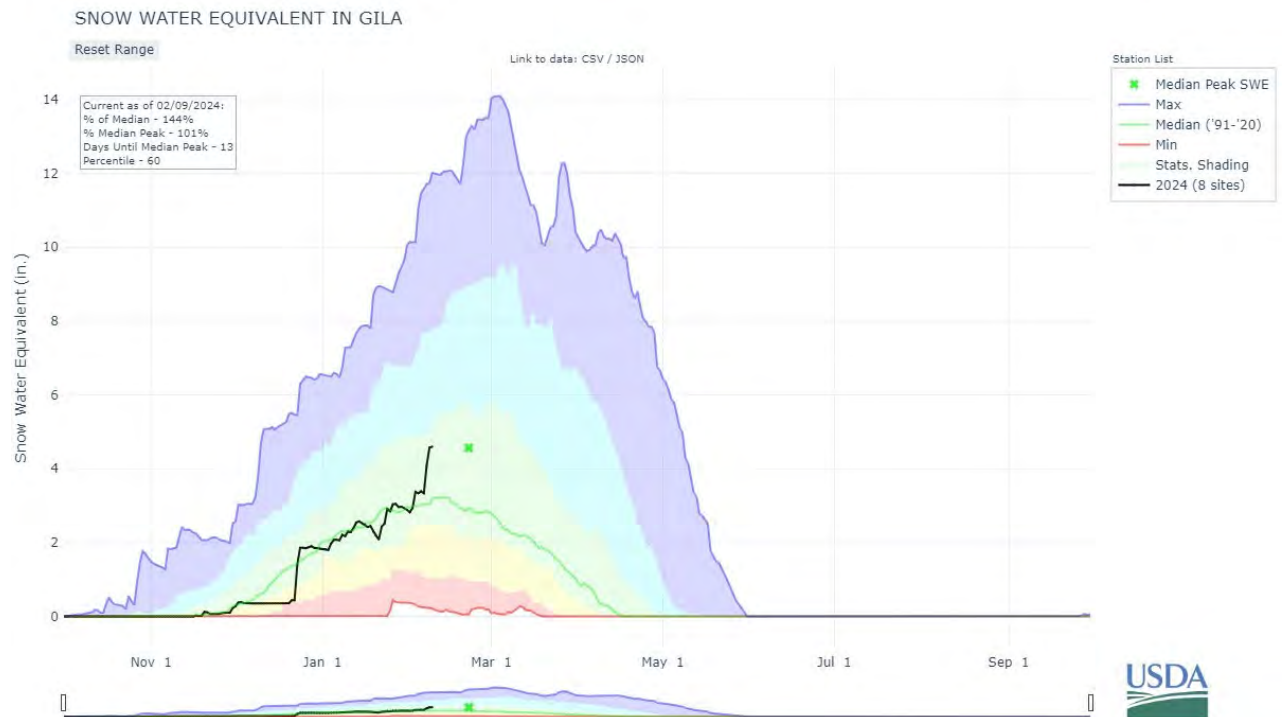
2) Forecasts are For unimpaired flows. Actual flow will be dependent On management of upstream reservoirs And diversions

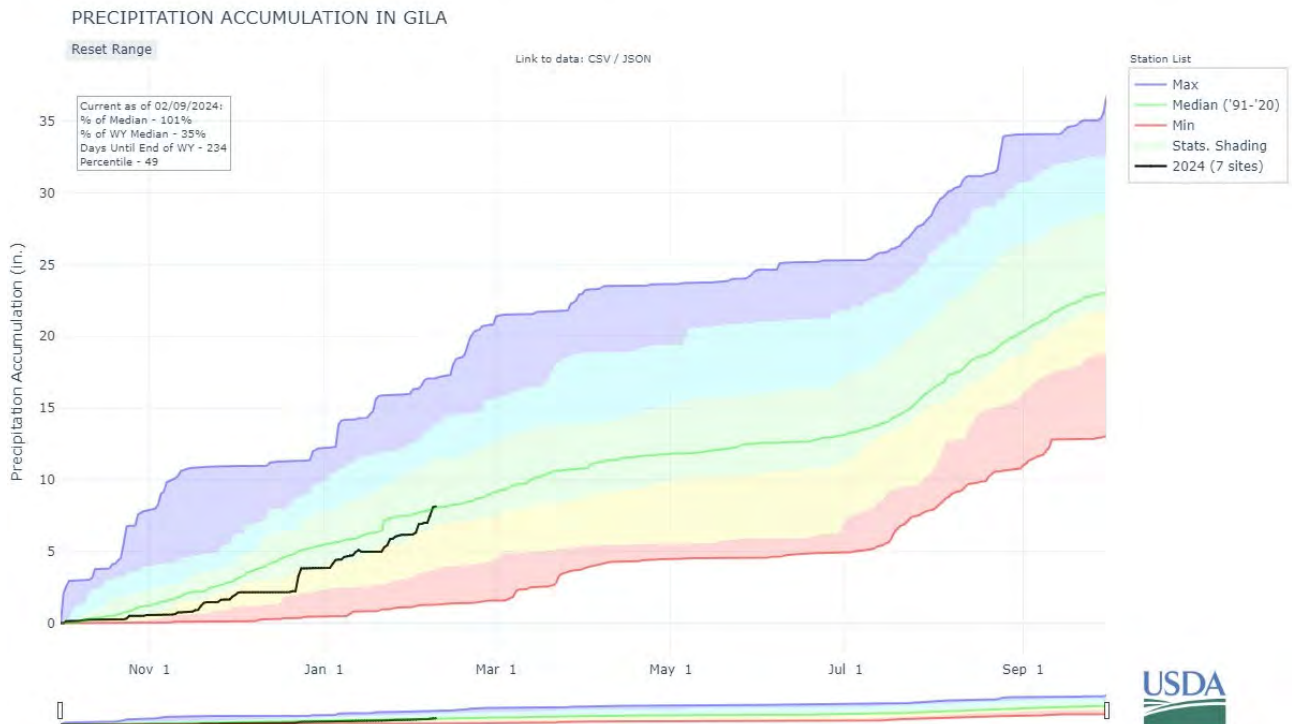
Reservoir Storage End of January, 2024	Current (KAF)	Last Year (KAF)	Median (KAF)	Capacity (KAF)
Verde River Reservoir System	145.0	194.2	130.5	287.4

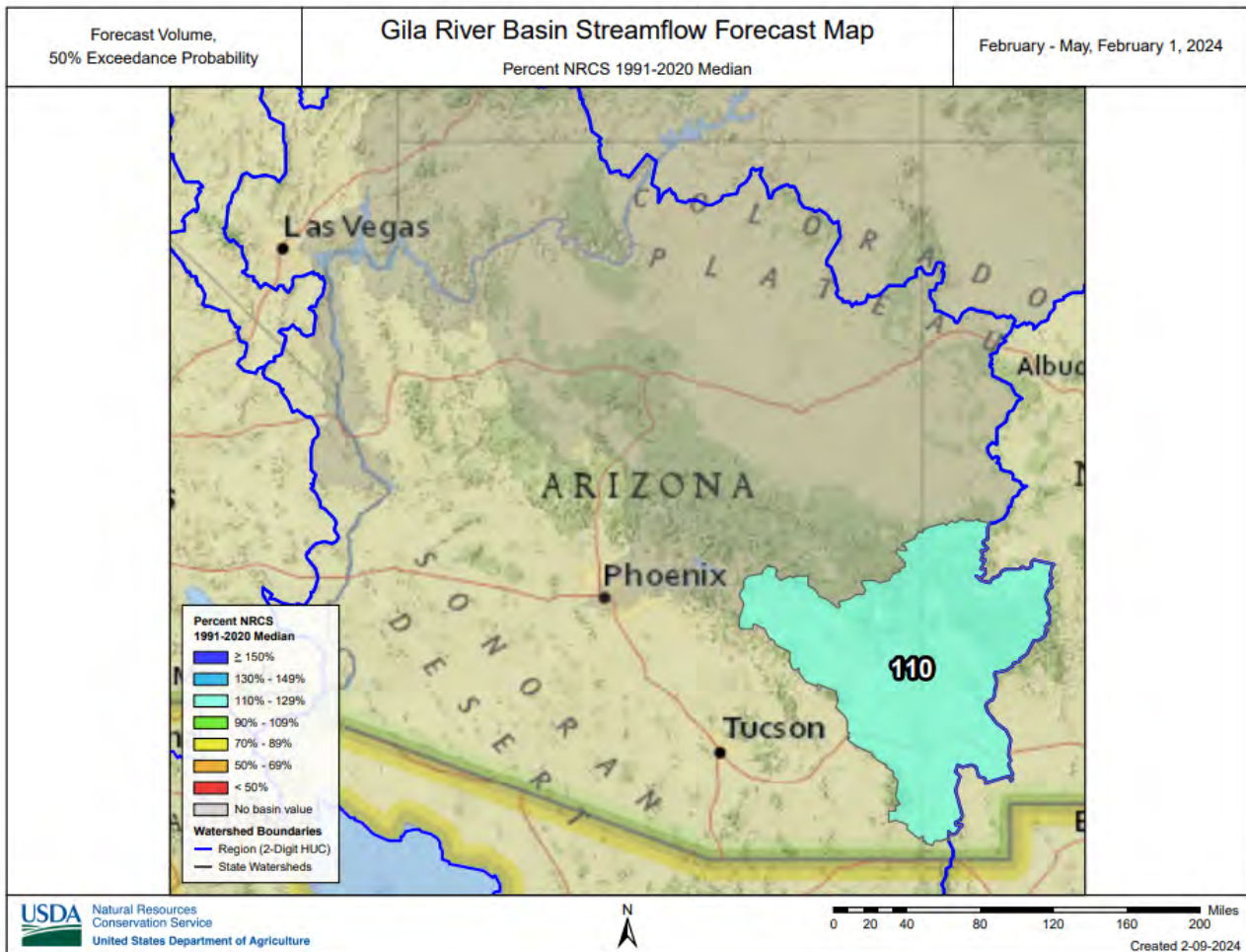
Watershed Snowpack Analysis February 1, 2024	# of Sites	% Median	Last Year % Median
Verde	15	59%	235%
Upper Verde	12	58%	274%

SAN FRANCISCO-UPPER GILA RIVER BASIN as of February 1, 2024

Above median streamflow levels are forecast for the basin. In the San Francisco River, at Clifton, the forecast calls for 120% of median streamflow levels through May. In the Gila River, near Solomon, the forecast calls for 99% of median streamflow levels through May. At San Carlos Reservoir, inflow to the lake is forecast at 129% of median through May. Snow survey measurements show the snowpack for this basin to be at 103% of median.







Data Current As of: 2/6/2024 12:01:04 PM

Gila
Streamflow Forecasts - February 1, 2024

Forecast Exceedance Probabilities For Risk Assessment
Chance that actual volume will exceed forecast

Gila	Forecast Period	90% (KAF)	70% (KAF)	50% (KAF)	% Median	30% (KAF)	10% (KAF)	30yr Median (KAF)
San Francisco R at Glenwood	FEB-MAY	8.4	15.5	22	146%	30	45	15.1
Gila R at Gila	FEB-MAY	20	33	44	100%	57	81	44
Gila R nr Solomon	FEB	4.3	13.4	24	114%	39	71	21
Gila R bl Blue Ck nr Virden	FEB-MAY	34	64	92	99%	127	193	93
San Francisco R at Clifton	FEB-MAY	21	37	52	96%	71	105	54
San Carlos Reservoir Inflow	FEB-MAY	18.8	34	48	120%	65	98	40
	FEB-MAY	16.1	44	75	129%	118	205	58

1) 90% And 10% exceedance probabilities are actually 95% And 5%

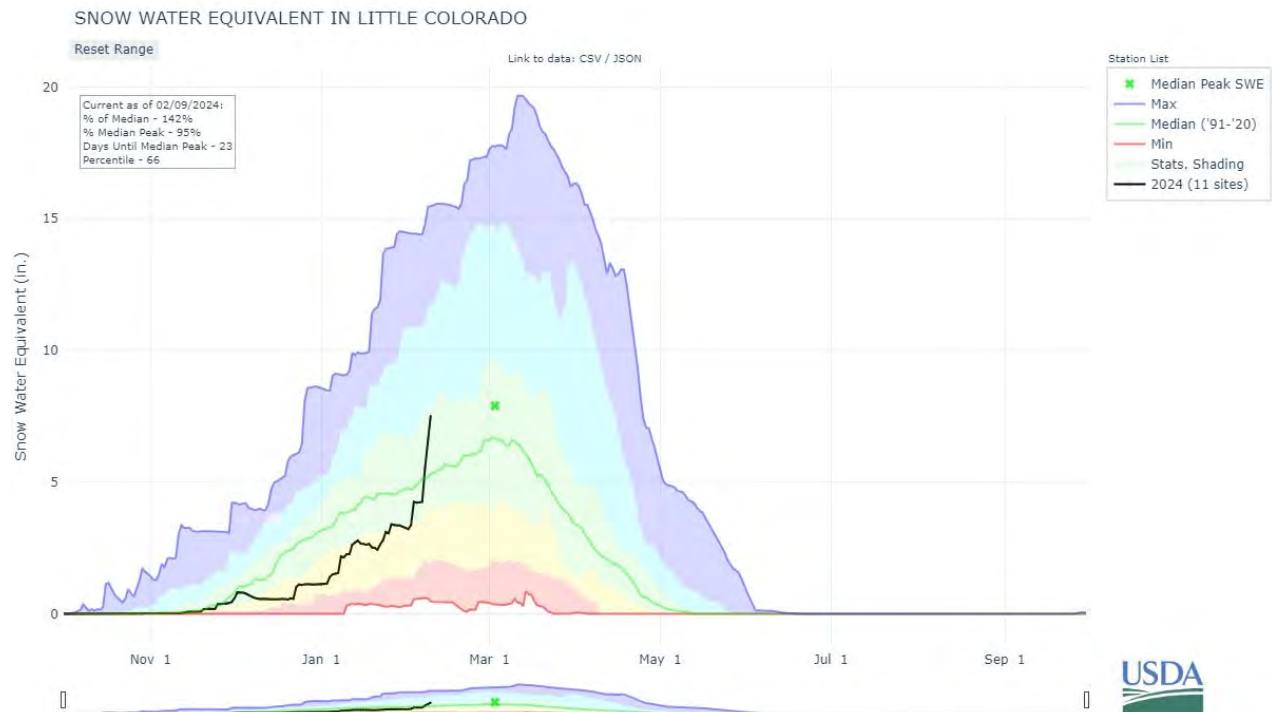
2) Forecasts are For unimpaired flows. Actual flow will be dependent On management of upstream reservoirs And diversions

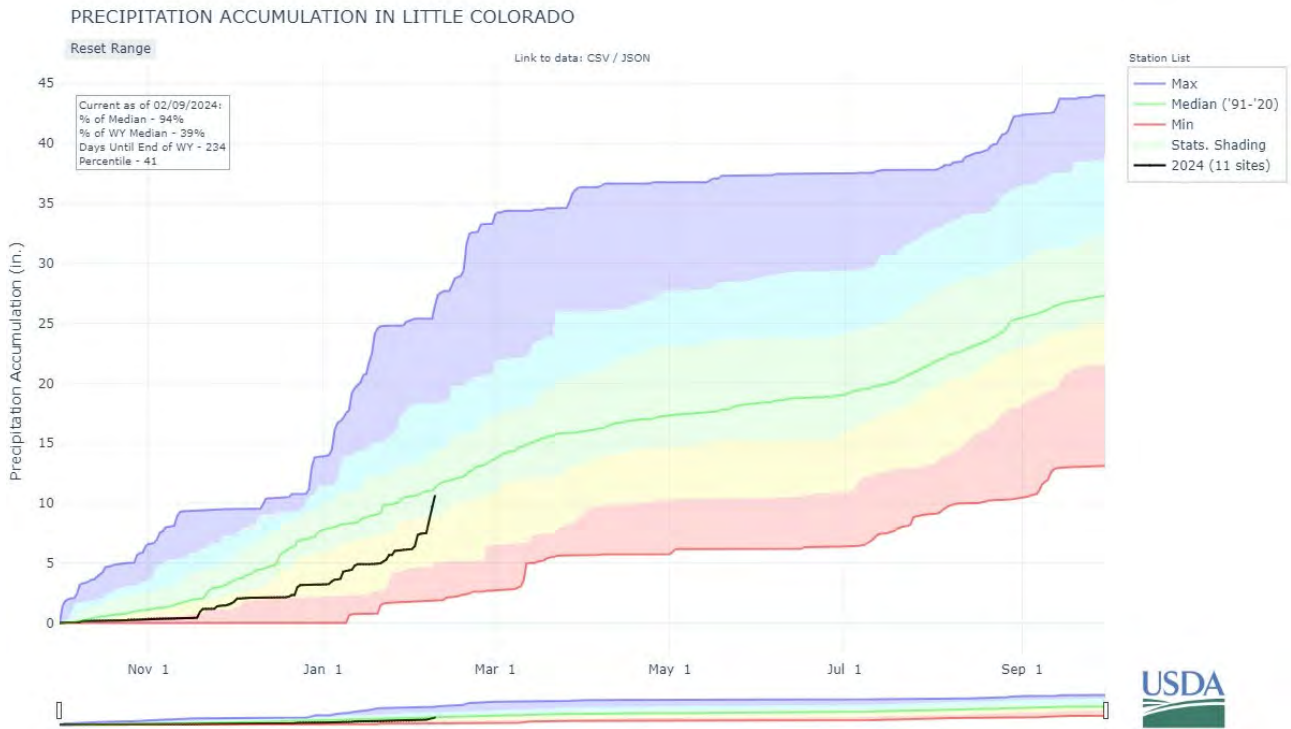
Reservoir Storage End of January, 2024	Current (KAF)	Last Year (KAF)	Median (KAF)	Capacity (KAF)
San Carlos Reservoir	332.5	355.7	116.0	875.0

Watershed Snowpack Analysis February 1, 2024	# of Sites	% Median	Last Year % Median
Gila	10	105%	130%
San Francisco	8	114%	140%
Upper Gila	3	93%	103%

LITTLE COLORADO RIVER BASIN as of February 1, 2024

Well below median streamflow levels are forecast for the basin. In the Little Colorado River, above Lyman Lake, the forecast calls for 60% of median streamflow through June. At Blue Ridge (C.C. Cragin) Reservoir, inflow to the lake is forecast at 50% of median through May. Snow survey measurements show the snowpack for this basin to be at 84% of median.







Data Current As of: 2/6/2024 12:01:09 PM

Little Colorado Streamflow Forecasts - February 1, 2024

Forecast Exceedance Probabilities For Risk Assessment
Chance that actual volume will exceed forecast

Little Colorado	Forecast Period	90% (KAF)	70% (KAF)	50% (KAF)	% Median	30% (KAF)	10% (KAF)	30yr Median (KAF)
Zuni R ab Black Rock Reservoir	FEB-MAY	0	0.02	0.16	160%	0.45	1.15	0.1
Bowl Canyon Ck ab Asaayi Lake	MAR-MAY	0.62	1.07	1.48	180%	1.98	2.9	0.82
Blue Ridge Reservoir Inflow	FEB-MAY	0.19	2.2	5.7	50%	11.8	27	11.3
Rio Nutria nr Ramah	FEB-MAY	0.04	0.32	0.66	103%	1.12	2	0.64
Lake Mary Reservoir Inflow	FEB-MAY	0.89	1.81	2.7	82%	3.8	6.1	3.3
Little Colorado R ab Lyman Lake	FEB-JUN	0.83	2.1	3.3	60%	4.8	7.4	5.5

1) 90% And 10% exceedance probabilities are actually 95% And 5%

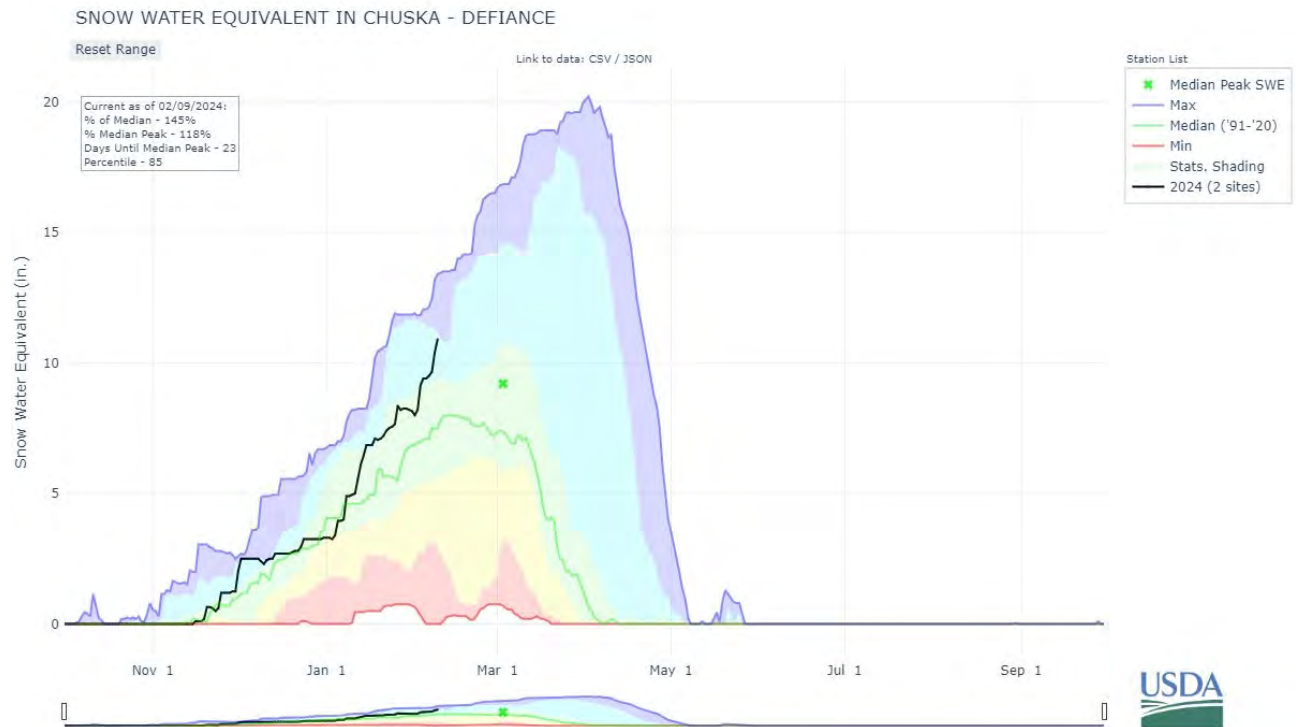
2) Forecasts are For unimpaired flows. Actual flow will be dependent On management of upstream reservoirs And diversions

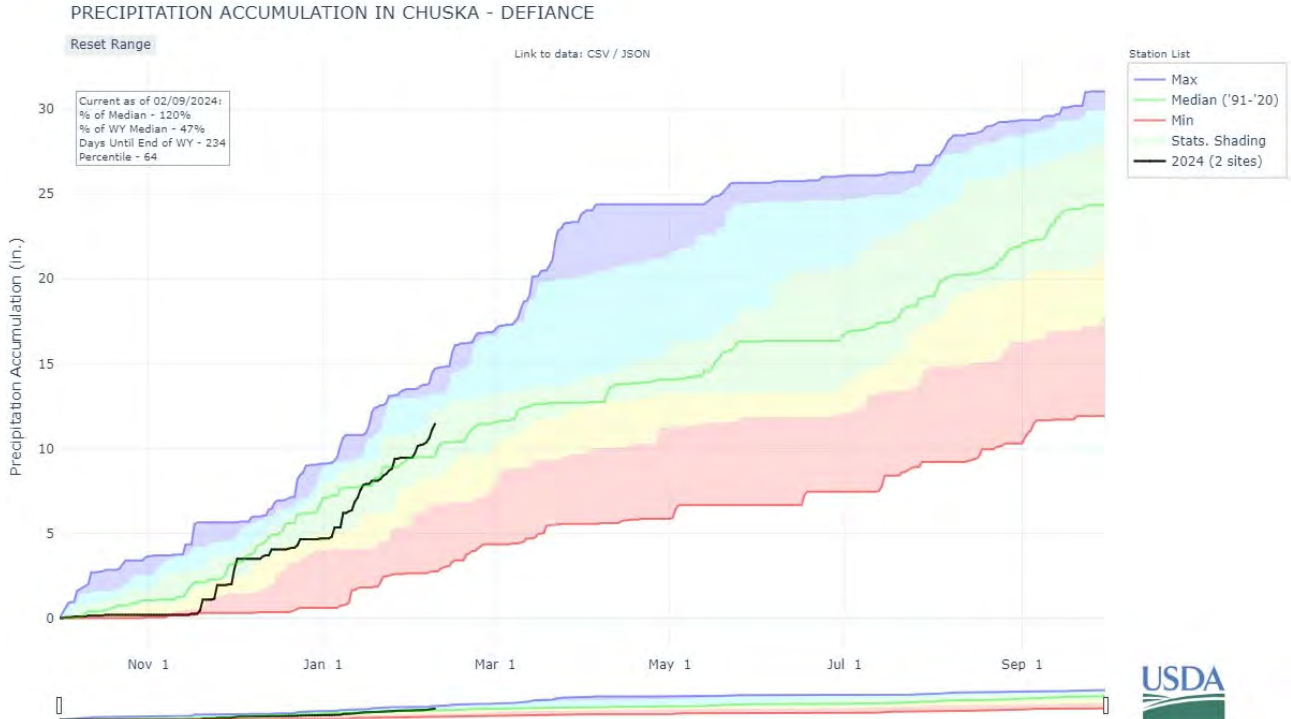
Reservoir Storage End of January, 2024	Current (KAF)	Last Year (KAF)	Median (KAF)	Capacity (KAF)
Lyman Reservoir	12.3	7.0	7.4	30.0
Cragin Dam Reservoir	7.7	8.3	7.9	15.0

Watershed Snowpack Analysis February 1, 2024	# of Sites	% Median	Last Year % Median
Little Colorado	26	84%	184%
Canyon Diablo	7	74%	235%
Chevelon Canyon	2	64%	183%
Little Colorado Headwaters	6	73%	108%
Zuni	3	200%	252%

CHUSKA MOUNTAINS as of February 1, 2024

Well above median streamflow levels are forecast for Wheatfields Creek, Captain Tom Wash, and Bowl Canyon Creek. Snow survey measurements conducted by staff of the Navajo Nation Water Management Branch show the Chuska snowpack to be at 124% of median.





Forecast Volume,
50% Exceedance Probability

Chuska Mountains Streamflow Forecast Map

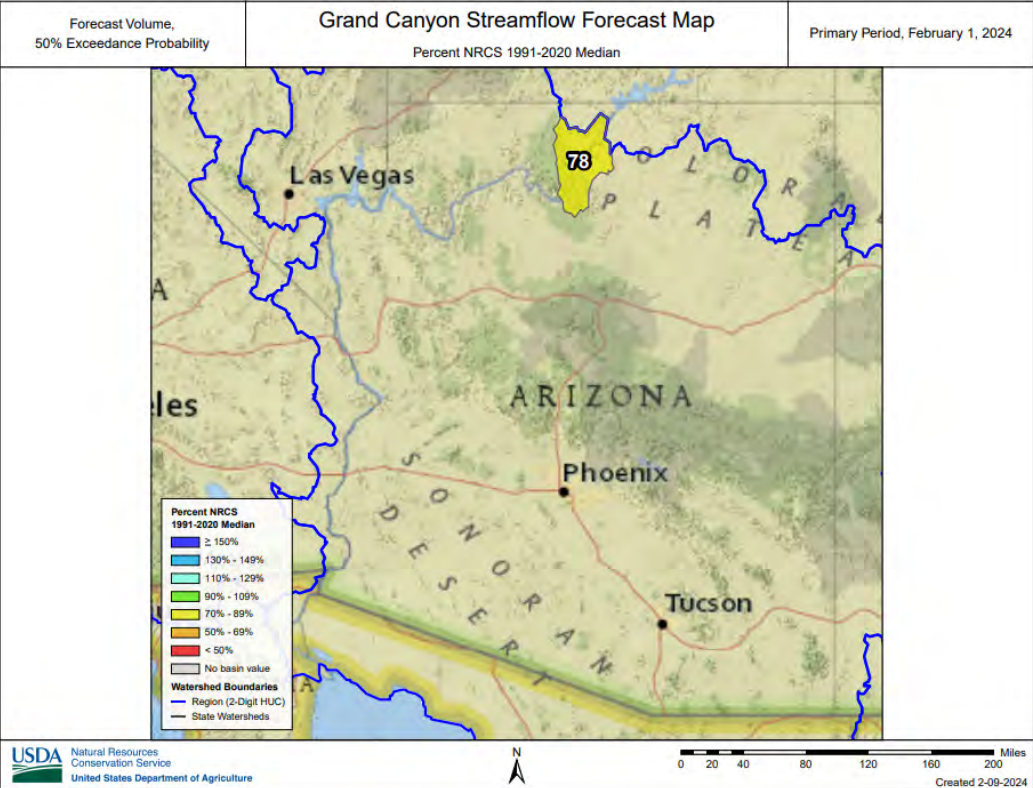
Primary Period, February 1, 2024

Percent NRCS 1991-2020 Median



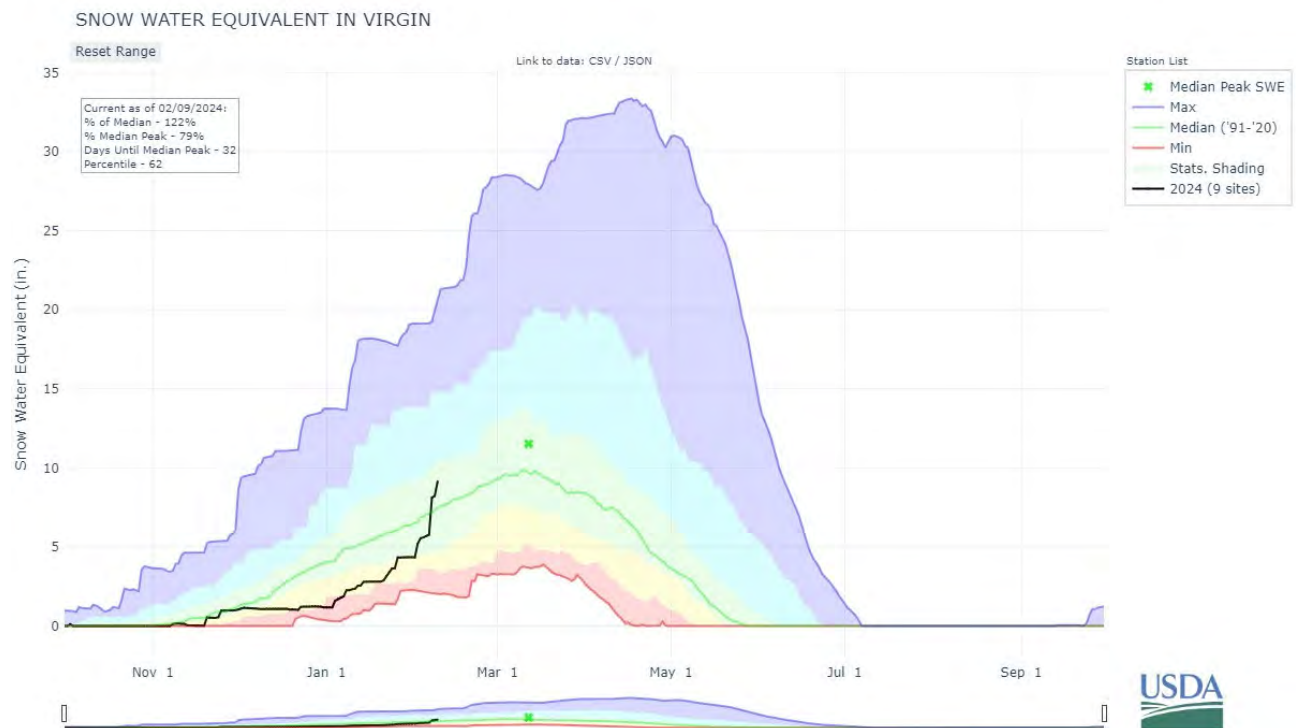
GRAND CANYON as of February 1, 2024

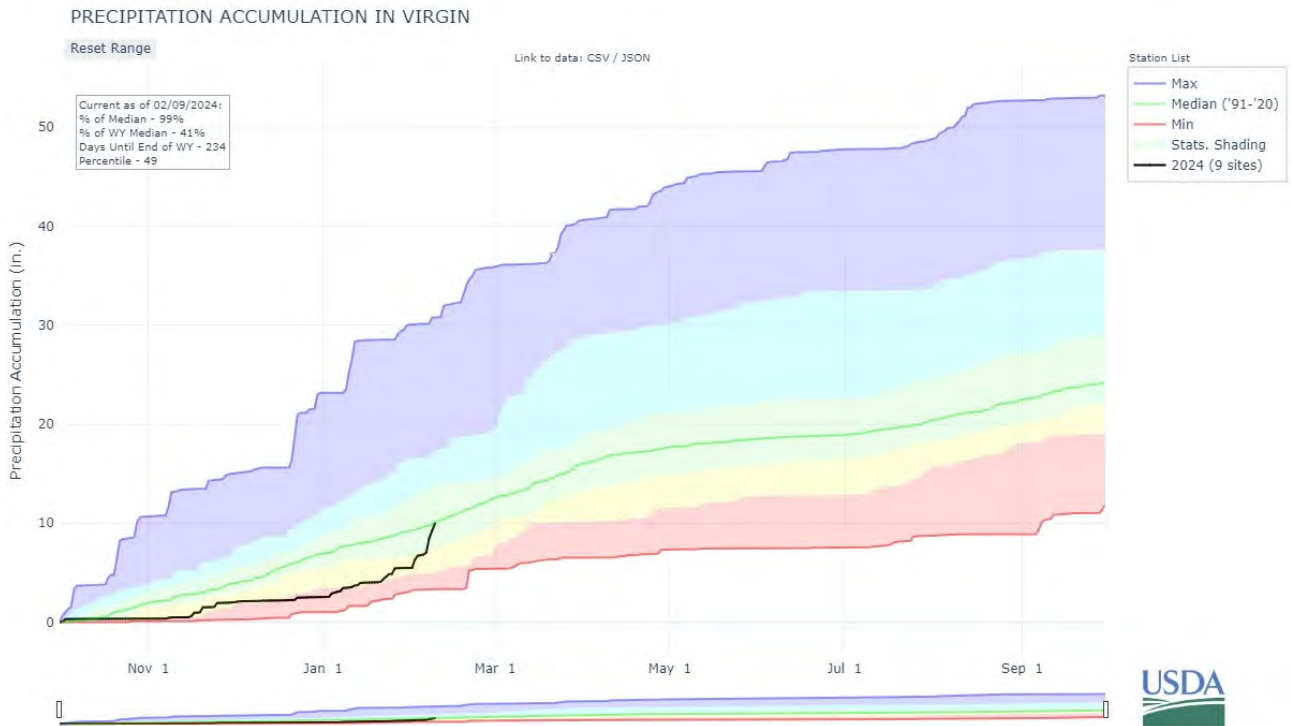
On the Colorado River, below median inflow to Lake Powell is forecast at 78% of the 30-year median for the forecast period April-July. At the Grand Canyon, snow survey measurements completed by park rangers show snowpack to be at 72% of median.

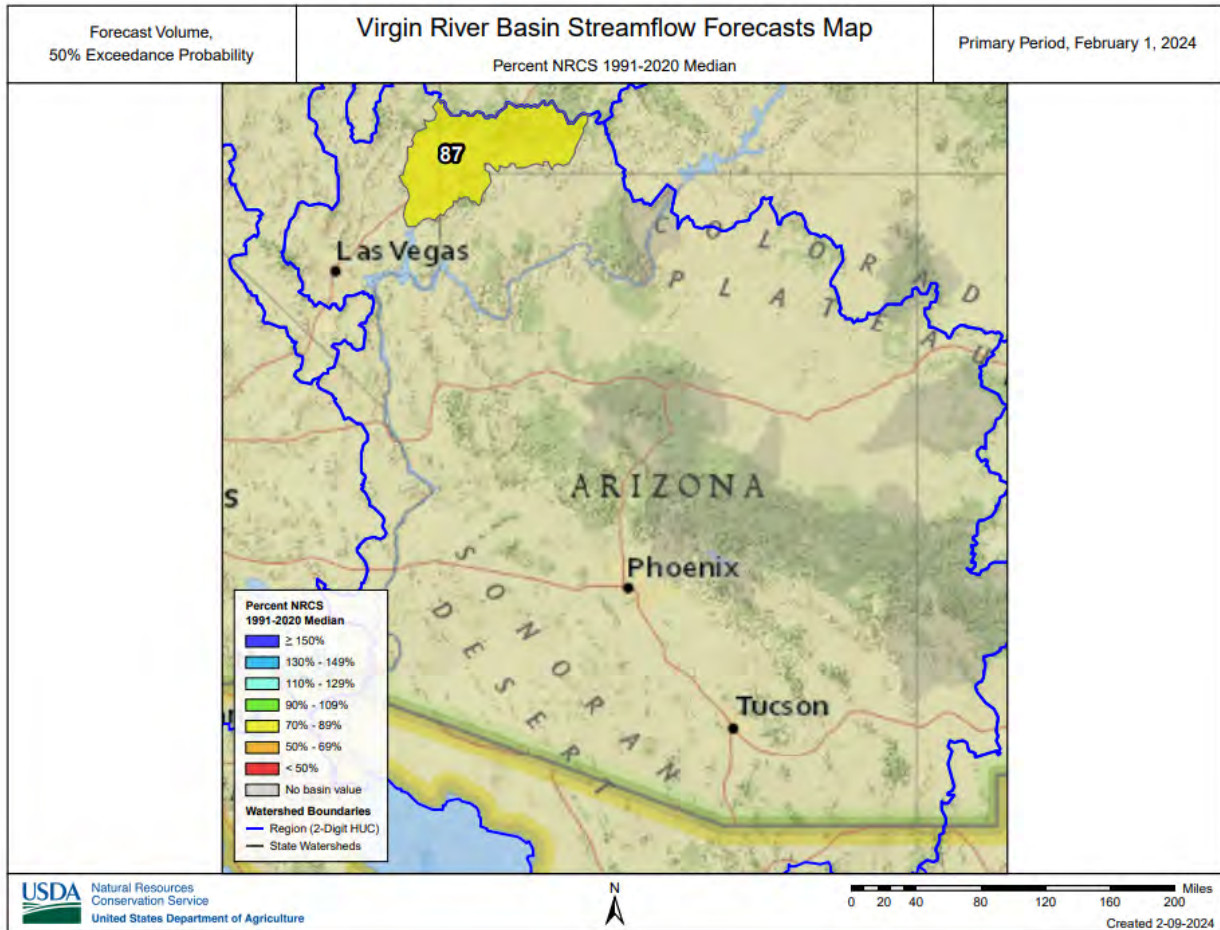


VIRGIN RIVER BASIN as of February 1, 2024

Below median streamflow levels are forecast for the basin, ranging from 74% of median in the Virgin River near Hurricane, to 97% of median in the Virgin River at Littlefield. Snow survey measurements show the snowpack for this basin to be at 28% of median.







Data Current As of: 2/6/2024 12:01:10 PM

Lower Colorado Mainstem Streamflow Forecasts - February 1, 2024

Forecast Exceedance Probabilities For Risk Assessment
Chance that actual volume will exceed forecast

Lower Colorado Mainstem	Forecast Period	90% (KAF)	70% (KAF)	50% (KAF)	% Median	30% (KAF)	10% (KAF)	30yr Median (KAF)
Virgin R at Virgin	APR-JUL	11.6	23	33	92%	45	65	36
Virgin R at Littlefield	APR-JUL	7.3	19.9	32	97%	47	74	33
Virgin R nr Hurricane	APR-JUL	3.3	12.9	23	74%	36	60	31
Lake Powell Inflow ²	APR-JUL	2490	3780	4800	78%	5950	7850	6130
Santa Clara R nr Pine Valley	APR-JUL	0.35	1.17	2	63%	3.1	5	3.2

1) 90% And 10% exceedance probabilities are actually 95% And 5%

2) Forecasts are For unimpaired flows. Actual flow will be dependent On management of upstream reservoirs And diversions

Reservoir Storage End of January, 2024	Current (KAF)	Last Year (KAF)	Median (KAF)	Capacity (KAF)
Lake Mohave	1670.0	1668.0	1658.0	1810.0
Sand Hollow Reservoir	49.1	38.7		50.0
Gunlock	8.9	2.6	7.3	10.4
Kolob Reservoir	4.6	2.1		5.6
Lake Mead	9413.0	7459.0	15227.0	26159.0
Quail Creek	30.2	28.2	30.0	40.0
Lake Havasu	589.7	565.6	556.4	619.0

Watershed Snowpack Analysis February 1, 2024	# of Sites	% Median	Last Year % Median
Lower Colorado Mainstem	13	64%	234%
Grand Canyon	2	72%	287%
Virgin	9	67%	223%

Basinwide Summary: February 1, 2024
 (Medians based On 1991-2020 reference period)

Snowpack Summary For February 1, 2024

Gila	Network	Elevation (ft)	Depth (in)	SWE (in)	Median (in)	% Median	Last Year SWE (in)	Last Year % Median
Beaver Head	SNOTEL	8076	7	2.4	2.2	109%	3.2	145%
Coronado Trail	SC	8350	14	3.2	1.2	267%	4.0	333%
Coronado Trail	SNOTEL	8418	9	3.1	2.4	129%	3.7	154%
Frisco Divide	SNOTEL	8013	7	2.7	2.0	135%	2.8	140%
Hannagan Meadows	SNOTEL	9027	17	5.3	7.2	74%	6.9	96%
Lookout Mountain	SNOTEL	8509	0	0.0	1.5	0%	1.4	93%
Nutriosio	SC	8500	4	1.0	0.8	125%	1.2	150%
Nutriosio	SNOTEL	8571	0	0.0	0.0		1.4	
Signal Peak	SNOTEL	8405	6	2.2	2.6	85%	1.7	65%
Silver Creek Divide	SNOTEL	9096	22	6.9	5.7	121%	7.0	123%
State Line	SC	8000	9	1.3	1.6	81%		
Basin Index						105%	130%	
# of sites						10	10	

San Francisco	Network	Elevation (ft)	Depth (in)	SWE (in)	Median (in)	% Median	Last Year SWE (in)	Last Year % Median
Beaver Head	SNOTEL	8076	7	2.4	2.2	109%	3.2	145%
Coronado Trail	SC	8350	14	3.2	1.2	267%	4.0	333%
Coronado Trail	SNOTEL	8418	9	3.1	2.4	129%	3.7	154%
Frisco Divide	SNOTEL	8013	7	2.7	2.0	135%	2.8	140%
Hannagan Meadows	SNOTEL	9027	17	5.3	7.2	74%	6.9	96%
Nutriosio	SC	8500	4	1.0	0.8	125%	1.2	150%
Nutriosio	SNOTEL	8571	0	0.0	0.0		1.4	
Silver Creek Divide	SNOTEL	9096	22	6.9	5.7	121%	7.0	123%
State Line	SC	8000	9	1.3	1.6	81%		
Basin Index						114%	140%	
# of sites						8	8	

Upper Gila	Network	Elevation (ft)	Depth (in)	SWE (in)	Median (in)	% Median	Last Year SWE (in)	Last Year % Median
Lookout Mountain	SNOTEL	8509	0	0.0	1.5	0%	1.4	93%
Signal Peak	SNOTEL	8405	6	2.2	2.6	85%	1.7	65%
Silver Creek Divide	SNOTEL	9096	22	6.9	5.7	121%	7.0	123%
Basin Index						93%	103%	
# of sites						3	3	

Salt	Network	Elevation (ft)	Depth (in)	SWE (in)	Median (in)	% Median	Last Year SWE (in)	Last Year % Median
Baldy	SNOTEL	9221	14	3.7	5.5	67%	6.0	109%
Beaver Head	SNOTEL	8076	7	2.4	2.2	109%	3.2	145%
Buck Spring	SC	7400	0	0.0	1.4	0%	3.2	229%
Coronado Trail	SC	8350	14	3.2	1.2	267%	4.0	333%
Coronado Trail	SNOTEL	8418	9	3.1	2.4	129%	3.7	154%
Fort Apache	SC	9160	22	5.1	6.6	77%	6.6	100%
Hannagan Meadows	SNOTEL	9027	17	5.3	7.2	74%	6.9	96%
Hawley Lake	SNOTEL	8314	26	7.9			11.0	
Heber	SNOTEL	7654	9	3.4	4.1	83%	9.1	222%
Maverick Fork	SNOTEL	9220	12	3.0	6.0	50%	5.2	87%
Promontory	SNOTEL	7942	12	3.8	7.2	53%	11.6	161%
Wildcat	SNOTEL	7868	7	2.5	2.4	104%	4.8	200%

Workman Creek	SNOTEL	7032	1	0.5	4.0	13%	6.9	173%
Basin Index						72%	142%	
# of sites						12	12	
Central Mogollon Rim	Network	Elevation (ft)	Depth (in)	SWE (in)	Median (in)	% Median	Last Year SWE (in)	Last Year % Median
Baker Butte	SNOTEL	7363	5	1.7	3.2	53%	7.7	241%
Baker Butte No. 2	SC	7700	14	3.7	6.5	57%	2.7	42%
Baker Butte Smt	SNOTEL	7752	17	4.9	7.2	68%	14.1	196%
Happy Jack	SC	7630	6	1.6	2.8	57%	7.6	271%
Happy Jack	SNOTEL	7539	8	2.9	4.1	71%	11.1	271%
Heber	SNOTEL	7654	9	3.4	4.1	83%	9.1	222%
Promontory	SNOTEL	7942	12	3.8	7.2	53%	11.6	161%
Workman Creek	SNOTEL	7032	1	0.5	4.0	13%	6.9	173%
Basin Index						58%	181%	
# of sites						8	8	
Upper Salt	Network	Elevation (ft)	Depth (in)	SWE (in)	Median (in)	% Median	Last Year SWE (in)	Last Year % Median
Baldy	SNOTEL	9221	14	3.7	5.5	67%	6.0	109%
Beaver Head	SNOTEL	8076	7	2.4	2.2	109%	3.2	145%
Buck Spring	SC	7400	0	0.0	1.4	0%	3.2	229%
Coronado Trail	SC	8350	14	3.2	1.2	267%	4.0	333%
Coronado Trail	SNOTEL	8418	9	3.1	2.4	129%	3.7	154%
Fort Apache	SC	9160	22	5.1	6.6	77%	6.6	100%
Hannagan Meadows	SNOTEL	9027	17	5.3	7.2	74%	6.9	96%
Hawley Lake	SNOTEL	8314	26	7.9			11.0	
Maverick Fork	SNOTEL	9220	12	3.0	6.0	50%	5.2	87%
Wildcat	SNOTEL	7868	7	2.5	2.4	104%	4.8	200%
Basin Index						81%	125%	
# of sites						9	9	
Verde	Network	Elevation (ft)	Depth (in)	SWE (in)	Median (in)	% Median	Last Year SWE (in)	Last Year % Median
Baker Butte	SNOTEL	7363	5	1.7	3.2	53%	7.7	241%
Baker Butte No. 2	SC	7700	14	3.7	6.5	57%	2.7	42%
Baker Butte Smt	SNOTEL	7752	17	4.9	7.2	68%	14.1	196%
Bar M	SNOTEL	6397	1	0.4			8.4	
Chalender	SC	7100	0	0.0	1.1	0%	5.4	491%
Chalender	SNOTEL	7035	1	0.6	2.9	21%	6.9	238%
Fort Valley	SNOTEL	7371	1	0.2	0.2	100%	6.0	3000%
Fort Valley	SC	7350	2	0.5	0.8	63%	5.4	675%
Fry	SNOTEL	7236	8	2.5	4.6	54%	12.3	267%
Happy Jack	SC	7630	6	1.6	2.8	57%	7.6	271%
Happy Jack	SNOTEL	7539	8	2.9	4.1	71%	11.1	271%
Mormon Mountain	SNOTEL	7500	6	2.6	3.3	79%	12.4	376%
Mormon Mountain Summit #2	SC	8470			8.3		15.2	183%
Mormon Mtn Summit	SNOTEL	8462		3.3	6.2	53%	11.6	187%
Newman Park	SC	6750	3	1.0	1.4	71%	4.9	350%
Snow Bowl #2	SC	11200	26	7.6	9.8	78%	15.6	159%
White Horse Lake	SNOTEL	7203	1	0.2	2.2	9%	8.6	391%
Williams Ski Run	SC	7720			5.0			
Basin Index						59%	235%	
# of sites						15	15	

Upper Verde	Network	Elevation (ft)	Depth (in)	SWE (in)	Median (in)	% Median	Last Year SWE (in)	Last Year % Median
Bar M	SNOTEL	6397	1	0.4			8.4	
Chalender	SNOTEL	7035	1	0.6	2.9	21%	6.9	238%
Chalender	SC	7100	0	0.0	1.1	0%	5.4	491%
Fort Valley	SNOTEL	7371	1	0.2	0.2	100%	6.0	3000%
Fort Valley	SC	7350	2	0.5	0.8	63%	5.4	675%
Fry	SNOTEL	7236	8	2.5	4.6	54%	12.3	267%
Happy Jack	SC	7630	6	1.6	2.8	57%	7.6	271%
Happy Jack	SNOTEL	7539	8	2.9	4.1	71%	11.1	271%
Mormon Mountain	SNOTEL	7500	6	2.6	3.3	79%	12.4	376%
Mormon Mountain Summit #2	SC	8470			8.3		15.2	183%
Mormon Mtn Summit	SNOTEL	8462		3.3	6.2	53%	11.6	187%
Newman Park	SC	6750	3	1.0	1.4	71%	4.9	350%
Snow Bowl #2	SC	11200	26	7.6	9.8	78%	15.6	159%
White Horse Lake	SNOTEL	7203	1	0.2	2.2	9%	8.6	391%
Williams Ski Run	SC	7720			5.0			
Basin Index						58%		274%
# of sites						12		12

Little Colorado	Network	Elevation (ft)	Depth (in)	SWE (in)	Median (in)	% Median	Last Year SWE (in)	Last Year % Median
Baker Butte	SNOTEL	7363	5	1.7	3.2	53%	7.7	241%
Baker Butte No. 2	SC	7700	14	3.7	6.5	57%	2.7	42%
Baker Butte Smt	SNOTEL	7752	17	4.9	7.2	68%	14.1	196%
Baldy	SNOTEL	9221	14	3.7	5.5	67%	6.0	109%
Boon	SC	8140	19	4.8	2.8	171%	5.8	207%
Bowl Canyon	SC	8980	30	7.4	6.0	123%	9.2	153%
Buck Spring	SC	7400	0	0.0	1.4	0%	3.2	229%
Cheese Springs	SC	8700	17	3.8	3.9	97%	4.2	108%
Dan Valley	SC	7640	15	4.4	2.0	220%	4.4	220%
Fluted Rock	SC	7800	16	4.7	2.2	214%	5.0	227%
Fort Apache	SC	9160	22	5.1	6.6	77%	6.6	100%
Fort Valley	SNOTEL	7371	1	0.2	0.2	100%	6.0	3000%
Fort Valley	SC	7350	2	0.5	0.8	63%	5.4	675%
Grand Canyon	SC	7500	2	0.6	1.5	40%	5.6	373%
Heber	SNOTEL	7654	9	3.4	4.1	83%	9.1	222%
Lake Mary	SC	6930	3	0.9	2.2	41%	5.4	245%
Maverick Fork	SNOTEL	9220	12	3.0	6.0	50%	5.2	87%
Mcgaffey	SC	8120	10	2.8	1.2	233%	4.9	408%
Missionary Spring	SC	7940	13	3.4	2.8	121%	6.4	229%
Mormon Mountain	SNOTEL	7500	6	2.6	3.3	79%	12.4	376%
Mormon Mountain Summit #2	SC	8470			8.3		15.2	183%
Mormon Mtn Summit	SNOTEL	8462		3.3	6.2	53%	11.6	187%
Nutriosio	SNOTEL	8571	0	0.0	0.0		1.4	
Nutriosio	SC	8500	4	1.0	0.8	125%	1.2	150%
Promontory	SNOTEL	7942	12	3.8	7.2	53%	11.6	161%
Snow Bowl #2	SC	11200	26	7.6	9.8	78%	15.6	159%
Snowslide Canyon	SNOTEL	9744	25	8.8	9.6	92%	19.1	199%
Basin Index						84%		184%
# of sites						26		26

Canyon Diablo	Network	Elevation (ft)	Depth (in)	SWE (in)	Median (in)	% Median	Last Year SWE (in)	Last Year % Median
Fort Valley	SNOTEL	7371	1	0.2	0.2	100%	6.0	3000%
Fort Valley	SC	7350	2	0.5	0.8	63%	5.4	675%

Lake Mary	SC	6930	3	0.9	2.2	41%	5.4	245%
Mormon Mountain	SNOTEL	7500	6	2.6	3.3	79%	12.4	376%
Mormon Mountain Summit #2	SC	8470			8.3		15.2	183%
Mormon Mtn Summit	SNOTEL	8462		3.3	6.2	53%	11.6	187%
Snow Bowl #2	SC	11200	26	7.6	9.8	78%	15.6	159%
Snowslide Canyon	SNOTEL	9744	25	8.8	9.6	92%	19.1	199%

Basin Index **74%** **235%**
of sites 7 7

Chavelon Canyon	Network	Elevation (ft)	Depth (in)	SWE (in)	Median (in)	% Median	Last Year SWE (in)	Last Year % Median
Heber	SNOTEL	7654	9	3.4	4.1	83%	9.1	222%
Promontory	SNOTEL	7942	12	3.8	7.2	53%	11.6	161%

Basin Index **64%** **183%**
of sites 2 2

Little Colorado Headwaters	Network	Elevation (ft)	Depth (in)	SWE (in)	Median (in)	% Median	Last Year SWE (in)	Last Year % Median
Baldy	SNOTEL	9221	14	3.7	5.5	67%	6.0	109%
Cheese Springs	SC	8700	17	3.8	3.9	97%	4.2	108%
Fort Apache	SC	9160	22	5.1	6.6	77%	6.6	100%
Maverick Fork	SNOTEL	9220	12	3.0	6.0	50%	5.2	87%
Nutriosos	SC	8500	4	1.0	0.8	125%	1.2	150%
Nutriosos	SNOTEL	8571	0	0.0	0.0		1.4	

Basin Index **73%** **108%**
of sites 6 6

Zuni	Network	Elevation (ft)	Depth (in)	SWE (in)	Median (in)	% Median	Last Year SWE (in)	Last Year % Median
Boon	SC	8140	19	4.8	2.8	171%	5.8	207%
Dan Valley	SC	7640	15	4.4	2.0	220%	4.4	220%
McGaffey	SC	8120	10	2.8	1.2	233%	4.9	408%

Basin Index **200%** **252%**
of sites 3 3

Lower Colorado Mainstem	Network	Elevation (ft)	Depth (in)	SWE (in)	Median (in)	% Median	Last Year SWE (in)	Last Year % Median
Bright Angel	SC	8400	17	4.3	5.3	81%	13.9	262%
Chalender	SNOTEL	7035	1	0.6	2.9	21%	6.9	238%
Chalender	SC	7100	0	0.0	1.1	0%	5.4	491%
Gardner Peak	SNOTEL	8322	18	4.8	7.8	62%	11.3	145%
Grand Canyon	SC	7500	2	0.6	1.5	40%	5.6	373%
Gutz Peak	SNOTEL	6763	6	2.9	6.0	48%	14.2	237%
Harris Flat	SNOTEL	7792	10	3.1	4.0	78%	11.1	278%
Kolob	SNOTEL	9263	30	7.1	11.4	62%	24.0	211%
Little Grassy	SNOTEL	6065	0	0.0	1.8	0%	7.6	422%
Long Flat	SNOTEL	7982	10	3.2	4.4	73%	9.8	223%
Long Valley Jct	SNOTEL	7465	6	2.0	3.0	67%	9.9	330%
Midway Valley	SNOTEL	9827	38	9.1	12.8	71%	26.1	204%
Webster Flat	SNOTEL	9203	25	6.9	7.4	93%	16.5	223%
Williams Ski Run	SC	7720			5.0			

Basin Index **64%** **234%**
of sites 13 13

Grand Canyon	Network	Elevation (ft)	Depth (in)	SWE (in)	Median (in)	% Median	Last Year SWE (in)	Last Year % Median
Bright Angel	SC	8400	17	4.3	5.3	81%	13.9	262%
Grand Canyon	SC	7500	2	0.6	1.5	40%	5.6	373%
Basin Index						72%		287%
# of sites						2		2

Virgin	Network	Elevation (ft)	Depth (in)	SWE (in)	Median (in)	% Median	Last Year SWE (in)	Last Year % Median
Gardner Peak	SNOTEL	8322	18	4.8	7.8	62%	11.3	145%
Gutz Peak	SNOTEL	6763	6	2.9	6.0	48%	14.2	237%
Harris Flat	SNOTEL	7792	10	3.1	4.0	78%	11.1	278%
Kolob	SNOTEL	9263	30	7.1	11.4	62%	24.0	211%
Little Grassy	SNOTEL	6065	0	0.0	1.8	0%	7.6	422%
Long Flat	SNOTEL	7982	10	3.2	4.4	73%	9.8	223%
Long Valley Jct	SNOTEL	7465	6	2.0	3.0	67%	9.9	330%
Midway Valley	SNOTEL	9827	38	9.1	12.8	71%	26.1	204%
Webster Flat	SNOTEL	9203	25	6.9	7.4	93%	16.5	223%
Basin Index						67%		223%
# of sites						9		9

Upper Colorado	Network	Elevation (ft)	Depth (in)	SWE (in)	Median (in)	% Median	Last Year SWE (in)	Last Year % Median
Agua Canyon	SNOTEL	8900	9	2.8	5.2	54%	9.9	190%
Arapaho Ridge	SNOTEL	10976	46	12.2	14.0	87%	16.8	120%
Arrow #2	SC	9668						
Battle Mountain	SNOTEL	7498	22	5.3	7.4	72%	12.3	166%
Bear River	SNOTEL	9112	25	6.5	6.8	96%	7.8	115%
Beartown	SNOTEL	11600	34	9.0	12.6	71%	15.6	124%
Beaver Ck Village	SNOTEL	8565	24	6.1	7.3	84%	9.7	133%
Beaver Spring	SNOTEL	9255	30	8.3	6.9	120%	10.4	151%
Beaver Spring	SC	9220	33	8.0	7.7	104%		
Berthoud Pass	SC	9700	50	12.6	9.5	133%	12.6	133%
Berthoud Summit	SNOTEL	11314	49	12.2	10.6	115%	12.8	121%
Big Park	SC	8620	39	9.8	10.2	96%	13.2	129%
Big Sandy Opening	SNOTEL	9080	27	6.4	8.1	79%	9.5	117%
Bison Lake	SNOTEL	10964	42	12.0	15.4	78%	24.7	160%
Black Flat-U.M. Ck	SNOTEL	9414	21	5.3	5.2	102%	9.9	190%
Black Mesa	SNOTEL	11564	35	9.0			18.8	
Blacks Fork Jct	SNOTEL	8869	21	6.5	5.0	130%	8.6	172%
Blind Bull Sum	SNOTEL	8650	44	11.7	15.0	78%	13.8	92%
Blue River	SC	10500	23	5.6	5.2	108%	5.0	96%
Bowl Canyon	SC	8980	30	7.4	6.0	123%	9.2	153%
Brown Duck	SNOTEL	10574	27	7.6	10.2	75%	15.2	149%
Bryce Canyon	SC	8000			4.3			
Buck Flat	SNOTEL	9409	30	8.7	9.9	88%	15.8	160%
Buck Pasture	SNOTEL	9632	33	8.0			12.1	
Buckboard Flat	SNOTEL	8924	22	6.0			13.2	
Buckboard Flat	SC	8998			7.5			
Buffalo Park	SNOTEL	9249	33	8.1	8.4	96%	10.3	123%
Burro Mountain	SNOTEL	9317	27	6.6	9.0	73%	13.6	151%
Butte	SNOTEL	10200	37	9.6	8.3	116%	11.5	139%
Butterhill	SC	7880	30	6.9	8.1	85%	13.4	165%
Camp Jackson	SNOTEL	8858	23	6.4	8.3	77%	15.9	192%
Cascade #2	SNOTEL	9012	18	5.6	6.9	81%	9.9	143%
Chapman Tunnel	SNOTEL	10100	32	9.1	9.3	98%	9.3	100%

Chepeta	SNOTEL	10499	16	4.2	7.8	54%	11.3	145%
Clayton Springs	SNOTEL	10049	21	4.5	6.8	66%	11.8	174%
Clear Creek #1	SNOTEL	8975	35	8.8	10.9	81%	20.0	183%
Cochetopa Pass	SC	10000			3.2			
Cochetopa Pass	SNOTEL	10061	12	2.5	3.0	83%	3.0	100%
Columbine	SNOTEL	9167	46	14.0	14.2	99%	18.9	133%
Columbine Lodge	SC	9160	47	12.5	12.9	97%	17.3	134%
Columbine Pass	SNOTEL	9171	36	9.5	10.0	95%	26.0	260%
Columbus Basin	SNOTEL	10781	34	9.0	14.9	60%	17.9	120%
Copper Mountain	SNOTEL	10523	32	8.0	8.6	93%	10.0	116%
Corral	SNOTEL	8207	12	3.5			12.3	
Corral Creek	SC	9700	26	7.2	8.7	83%	11.1	128%
Cottonwood Pass	SNOLITE	11681	49					
Crested Butte	SC	8920	39	9.5	8.0	119%	11.0	138%
Crosho	SNOTEL	8973	31	8.0	7.5	107%	10.8	144%
Currant Creek	SNOTEL	7915	26	7.5	6.0	125%	13.1	218%
Daniels-Strawberry	SNOTEL	8008	30	9.4	8.8	107%	16.3	185%
Dills Camp	SNOTEL	9228	22	6.4	6.6	97%	13.0	197%
Divide Peak	SNOTEL	8730	33	8.8	12.2	72%	16.9	139%
Donkey Reservoir	SNOTEL	9799	16	3.1	4.2	74%	7.0	167%
Dry Lake	SNOTEL	8271	47	14.0	12.6	111%	22.8	181%
EF Blacks Fork GS	SNOTEL	9360	21	4.3	6.3	68%	9.4	149%
East Rim Divide	SNOTEL	7930	18	4.4	6.9	64%	7.5	109%
East Willow Creek	SNOTEL	8302	18	3.0	4.6	65%	10.7	233%
El Diente Peak	SNOTEL	10217	28	7.1	7.7	92%	12.3	160%
Elk River	SNOTEL	8739	34	9.9	11.2	88%	18.6	166%
Elkhart Park G.S.	SNOTEL	9400	22	5.4	7.6	71%	7.9	104%
Elkhead Divide	SNOTEL	8800	40	11.3			21.0	
Elliot Ridge	SNOTEL	10549	38	12.4	11.0	113%	18.8	171%
Fish Lake	SC	8818						
Fish Lake Utah	SNOTEL	8798	19	5.4	6.0	90%	8.5	142%
Five Points Lake	SNOTEL	10943	25	6.9	9.1	76%	15.2	167%
Fluted Rock	SC	7800	16	4.7	2.2	214%	5.0	227%
Fool Creek	SNOTEL	11156	40	11.5			11.7	
Fremont Pass	SNOTEL	11326	32	7.7	9.6	80%	9.3	97%
G.B.R.C. Meadows	SC	9780						
GBRC Meadows	SNOTEL	9858	35	10.5			18.7	
Gold Basin	SNOTEL	10076	39	9.7			20.5	
Gore Pass	SC	9400	34	9.2	7.2	128%	9.9	138%
Granby	SC	8600	23	4.9	4.8	102%	8.6	179%
Grizzly Peak	SNOTEL	11139	39	9.2	10.4	88%	11.1	107%
Gros Ventre Summit	SNOTEL	8750	25	4.9	8.0	61%	7.5	94%
Groundhog	SC	8940			6.6		10.2	155%
Gunsight Pass	SNOTEL	9820	27	6.3	8.4	75%	8.4	100%
Hagerman Tunnel	SC	11150			15.0		11.3	75%
Hams Fork	SNOTEL	7840	13	4.0	7.0	57%	9.6	137%
Haskins Creek	SC	8975	56	13.0	18.7	70%	26.2	140%
Henrys Fork	SNOLITE	10182	23					
Hewinta	SNOTEL	9500	28	5.6	5.4	104%	7.8	144%
Hickerson Park	SNOTEL	9122	25	4.6	4.2	110%	6.3	150%
Hidden Valley	SC	8480	30	7.7	5.2	148%		
High Lonesome	SNOTEL	10638	45	12.0			14.3	
Hole-in-Rock	SNOTEL	9168	20	4.3	4.2	102%	5.8	138%
Huntington Horse	SNOTEL	9652	46	14.4			25.8	
Huntington-Horseshoe	SC	9657						
Idarado	SNOTEL	9812	26	6.0	8.0	75%	9.4	118%

Independence Pass	SC	10600	29	6.1	7.6	80%	8.2	108%
Independence Pass	SNOTEL	10598	31	7.7	10.0	77%	10.1	101%
Indian Creek	SNOTEL	9425	44	11.6	13.8	84%	17.1	124%
Ironton Park	SC	9600	30	7.4	9.0	82%		
Ivanhoe	SNOTEL	10541	39	10.4	7.8	133%	11.0	141%
Jones Pass	SNOTEL	10426	35	8.6	9.1	95%	10.0	110%
Jones Pass	SC	10400	34	7.9	9.6	82%	10.0	104%
Kelley R.S.	SNOTEL	8180	33	8.7	9.0	97%	12.5	139%
Kendall R.S.	SNOTEL	7740	20	4.5	7.6	59%	7.3	96%
Keystone	SC	9960	35	9.2	9.8	94%	14.2	145%
Kiln	SNOTEL	9624	30	7.5	7.0	107%	8.3	119%
Kings Cabin	SNOTEL	8728	12	3.3	5.5	60%	13.0	236%
Lake City	SC	10160	18	3.7	4.7	79%	4.0	85%
Lake Irene	SC	10700	38	9.8	10.8	91%	12.2	113%
Lake Irene	SNOTEL	10682	47	11.2	13.6	82%	17.9	132%
Lakefork #1	SNOTEL	10128	19	4.9	7.2	68%	10.6	147%
Lakefork #3	SNOTEL	8464	10	2.8	4.5	62%	8.4	187%
Lakefork Basin	SNOTEL	10885	34	8.8	11.2	79%	18.0	161%
Lapland	SC	9300	27	6.9	5.6	123%	6.9	123%
Larsen Creek	SC	9020	30	4.7	5.7	82%	7.6	133%
Larsen Creek	SNOTEL	9000	9	2.9	5.0	58%	6.9	138%
Lasal Mountain	SNOTEL	9578	28	7.1	7.6	93%	14.5	191%
Lasal Mountain-Lower	SC	8825			5.2			
Lasal Mountain-Lower	SNOTEL	8783	23	6.3			11.8	
Lemon Reservoir	SC	8700	23	5.5	5.7	96%	9.0	158%
Little Snake River	SNOTEL	8928	50	14.8	16.2	91%	24.6	152%
Lizard Head Pass	SNOTEL	10193	29	7.4	8.4	88%	12.4	148%
Lone Cone	SNOTEL	9755	30	7.4	9.4	79%	13.9	148%
Lonesome Beaver	SNOTEL	9410	6	1.5			7.2	
Loomis Park	SNOTEL	8240	28	6.6	9.9	67%	9.5	96%
Lost Dog	SNOTEL	9327	39	11.8	13.5	87%	21.3	158%
Lostman	SC	10626	36	8.2	10.5	78%	9.3	89%
Lynx Pass	SNOTEL	8919	22	6.6	6.9	96%	9.1	132%
Mammoth-Cottonwood	SNOTEL	8709	41	11.6	10.6	109%	21.4	202%
Mancos	SNOTEL	10044	29	7.5	9.6	78%	12.7	132%
Mc Clure Pass	SNOTEL	8774	28	7.5	9.7	77%	16.0	165%
Mc Kenzie Gulch	SC	8500	23	4.6	4.5	102%	6.0	133%
Mccoy Park	SNOTEL	9516	29	7.8	8.8	89%	11.3	128%
Mesa Lakes	SC	10000			11.3		14.9	132%
Mesa Lakes	SNOTEL	10168	29	7.4	9.8	76%	12.8	131%
Middle Fork Camp	SNOTEL	8969	30	7.0	6.9	101%	8.1	117%
Middle Fork Campground	SC	9000	27	7.1	6.5	109%		
Milner Pass	SC	9750	28	6.9	7.7	90%	11.8	153%
Mineral Creek	SNOTEL	10046	26	6.3	9.0	70%	10.8	120%
Missionary Spring	SC	7940	13	3.4	2.8	121%	6.4	229%
Molas Lake	SNOTEL	10631	29	6.9	10.6	65%	13.2	125%
Monarch Offshoot	SC	10500	39	6.4	8.1	79%	11.2	138%
Mosby Mtn.	SNOTEL	9553	15	3.0	6.1	49%	12.5	205%
Mt Baldy	SNOTEL	9524	43	12.7			23.8	
Mt Pennell	SNOTEL	9209	16	3.4			9.2	
Nast Lake	SC	8700	20	5.0	4.4	114%	4.9	111%
Nast Lake	SNOTEL	8731	26	6.8	4.8	142%	7.0	146%
Navajo Whiskey Ck	SNOTEL	9064	27	7.7	6.8	113%	11.6	171%
New Fork Lake	SNOTEL	8340	18	4.6	6.8	68%	7.1	104%
North Inlet Grand Lake	SC	9000	26	5.4	4.6	117%	7.5	163%
North Lost Trail	SNOTEL	9219	33	9.2	9.8	94%	14.6	149%

Old Battle	SNOTEL	9860	53	14.9	19.0	78%	25.1	132%
Overland Res.	SNOTEL	9893	20	5.3	7.2	74%	11.5	160%
Park Cone	SNOTEL	9621	28	7.4	6.0	123%	8.7	145%
Park Cone	SC	9600	33	6.8	5.8	117%		
Park Reservoir	SNOTEL	9987	38	10.8	14.0	77%	25.6	183%
Phantom Valley	SNOTEL	9045	21	4.9	6.3	78%	8.4	133%
Pocket Creek	SC	9350	24	5.5	7.0	79%	9.0	129%
Pocket Creek	SNOTEL	9360					10.3	
Porphyry Creek	SC	10760	39	8.9	9.8	91%	11.5	117%
Porphyry Creek	SNOTEL	10788	38	10.5	9.4	112%	11.9	127%
Rabbit Ears	SNOTEL	9411	47	14.3	14.2	101%	21.0	148%
Ranch Creek	SC	9400	33	8.8	6.4	138%		
Red Mountain Pass	SNOTEL	11080	40	10.5	13.2	80%	16.7	127%
Red Pine Ridge	SNOTEL	8988	27	8.0	7.6	105%	13.1	172%
Rio Blanco	SC	8500	34	8.5	8.4	101%		
Ripple Creek	SNOTEL	10350	52	14.0	15.2	92%	24.1	159%
Rock Creek	SNOTEL	7886	14	3.7	5.0	74%	8.4	168%
Rowdy Creek	SC	8300	34	8.3	10.8	77%	11.1	103%
Sage Creek Basin	SNOTEL	7850	23	5.8	9.1	64%	14.7	162%
Sandstone RS	SNOTEL	8152	30	8.8	8.0	110%	16.1	201%
Sargents Mesa	SNOTEL	11499	21	4.6	6.7	69%	6.8	101%
Schofield Pass	SNOTEL	10653	50	14.7	17.8	83%	25.7	144%
Scotch Creek	SNOTEL	9195	23	5.8	6.7	87%	11.5	172%
Seeley Creek	SNOTEL	9904	20	6.0	7.8	77%	15.1	194%
Sharkstooth	SNOTEL	10747	31	7.4	11.4	65%	16.0	140%
Shrine Pass	SC	10700	40	10.1	9.6	105%	10.9	114%
Slumgullion	SNOTEL	11560	26	6.2	8.8	70%	7.0	80%
Snake River	SC	10000	24	5.8	5.1	114%	4.9	96%
Snider Basin	SNOTEL	8060	20	5.0	8.1	62%	8.5	105%
Spirit Lk	SNOTEL	10235	20	4.8	6.5	74%	12.1	186%
Spring Creek Divide	SNOTEL	9000	48	12.7	15.1	84%	15.1	100%
Spud Mountain	SNOTEL	10674	36	10.1	14.9	68%	20.0	134%
Steel Creek Park	SNOTEL	10158	30	8.1	8.7	93%	12.3	141%
Stillwater Creek	SNOTEL	8880	19	4.6			7.3	
Strawberry Divide	SNOTEL	8123	39	11.9	9.2	129%	15.2	165%
Stump Lakes	SNOTEL	11248	35	9.1	11.2	81%	15.2	136%
Summit Ranch	SNOTEL	9371	24	5.9	6.6	89%	8.2	124%
Sunflower Flat	SNOTEL	10018	9	2.1			12.1	
Telluride	SC	8800	23	4.9	5.2	94%		
Tennessee Pass #2	SC	10280	30	6.1	7.2	85%	7.1	99%
Timberline	SNOTEL	8736	13	3.6	6.5	55%	14.5	223%
Tower	SNOTEL	10620	73	23.1	26.0	89%	35.8	138%
Trapper Lake	SNOTEL	9759	24	7.0			6.6	
Trial Lake	SNOTEL	9992	50	11.3	12.7	89%	21.2	167%
Trial Lake	SC	9953						
Triple Peak	SNOTEL	8500	46	11.4	14.4	79%	14.6	101%
Trout Creek	SNOTEL	9518	15	3.3	4.6	72%	9.9	215%
Trout Lake #2	SC	9780	22	4.6	7.3	63%		
Tsaile Canyon #1	SC	8160	31	7.9	5.0	158%		
Tsaile Canyon #3	SC	8920	33	7.0	6.6	106%		
Upper Joes Valley	SNOTEL	8596	18	5.6			10.4	
Upper San Juan	SNOTEL	10140	46	12.0	17.6	68%	22.9	130%
Upper San Juan	SC	10200			20.3		22.6	111%
Upper Taylor	SNOTEL	10717	28	7.7	7.9	97%	12.1	153%
Vail Mountain	SNOTEL	10310	40	12.2	10.4	117%	13.7	132%
Vallecito	SNOTEL	10782	33	8.1	9.8	83%	12.9	132%

Vasquez	SC	9600	35	8.1	7.4	109%		
Wager Gulch	SNOTEL	11132	19	4.5			6.0	
Weminuche Creek	SNOTEL	10749	36	9.3	10.4	89%	14.9	143%
Whiskey Creek	SC	9050	29	7.2	6.6	109%		
Whiskey Park	SNOTEL	9020	54	16.2	16.2	100%	26.2	162%
White River #1	SNOTEL	8641	31	8.7	6.5	134%	12.3	189%
Widtsoe #3	SNOTEL	9640	19	4.5	6.2	73%	11.5	185%
Wilbur Bench	SNOTEL	9171	20	5.6	6.0	93%	11.9	198%
Willow Creek Pass	SC	9540	30	6.3	7.8	81%	11.6	149%
Willow Creek Pass	SNOTEL	9523	29	7.5	7.9	95%	11.5	146%
Wolf Creek Peak	SNOTEL	9796	39	9.2			22.4	
Wolf Creek Summit	SNOTEL	10957	46	12.8	19.2	67%	24.2	126%
Wrigley Creek	SNOTEL	9327	17	4.3			10.7	
Wurtz Lower	SC	10690	34	7.8	9.4	83%		
Yampa View	SC	8200	40	10.8	10.0	108%	16.0	160%
Basin Index						87%		142%
# of sites						165		165

Chuska - Defiance	Network	Elevation (ft)	Depth (in)	SWE (in)	Median (in)	% Median	Last Year SWE (in)	Last Year % Median
Beaver Spring	SNOTEL	9255	30	8.3	6.9	120%	10.4	151%
Beaver Spring	SC	9220	33	8.0	7.7	104%		
Bowl Canyon	SC	8980	30	7.4	6.0	123%	9.2	153%
Fluted Rock	SC	7800	16	4.7	2.2	214%	5.0	227%
Hidden Valley	SC	8480	30	7.7	5.2	148%		
Missionary Spring	SC	7940	13	3.4	2.8	121%	6.4	229%
Navajo Whiskey Ck	SNOTEL	9064	27	7.7	6.8	113%	11.6	171%
Tsaile Canyon #1	SC	8160	31	7.9	5.0	158%		
Tsaile Canyon #3	SC	8920	33	7.0	6.6	106%		
Whiskey Creek	SC	9050	29	7.2	6.6	109%		
Basin Index						128%		172%
# of sites						5		5