



Natural
Resources
Conservation
Service

Arizona Basin Outlook Report January 15, 2024



Issued by

Terry Cosby
Chief
Natural Resources Conservation Service
U.S. Department of Agriculture

Released by

Keisha L. Tatem
State Conservationist
Natural Resources Conservation Service
Phoenix, Arizona

Basin Outlook Reports And Federal – State – Private Cooperative Snow Surveys

How forecasts are made

Most of the annual streamflow in Arizona originates as snowfall that has accumulated in the mountains during the winter and early spring. As the snowpack accumulates, hydrologists estimate the runoff that will occur when it melts. Measurements of snow water equivalent at selected manual snow courses and automated Snow Telemetry (SNOTEL) sites, along with precipitation and streamflow values, are used in statistical and simulation models to prepare runoff forecasts. These forecasts are coordinated between hydrologists in the Natural Resources Conservation Service (NRCS) the National Weather Service, and the Salt River Project.

Forecasts of any kind are not perfect. Streamflow forecast uncertainty arises from three primary sources: (1) uncertainty of future weather conditions, (2) uncertainty in the forecasting procedure, and (3) errors in the data. The forecast, therefore, must be interpreted not as a single value but rather as a range of values with specific probabilities of occurrence. The middle of the range is expressed by the 50% exceedance probability forecast, for which there is a 50% chance that the actual flow will be above, and a 50% chance that the actual flow will be below, this value. To describe the expected range around this 50% value, four other forecasts are provided, two smaller values (90% and 70% exceedance probability) and two larger values (30%, and 10% exceedance probability). For example, there is a 90% chance that the actual flow will be more than the 90% exceedance probability forecast.

The wider the spread among these values, the more uncertain the forecast. As the season progresses, forecasts become more accurate, primarily because a greater portion of the future weather conditions become known. This is reflected by a narrowing of the range around the 50% exceedance probability forecast. Users should take this uncertainty into consideration when making operational decisions by selecting forecasts corresponding to the level of risk they are willing to assume about the amount of water to be expected. If users anticipate receiving a lesser supply of water, or are concerned about having an adequate water supply, they may want to base their decisions on the 90% or 70% exceedance probability forecasts. On the other hand, if users anticipate receiving too much water, or are concerned about the threat of flooding, they may want to base their decisions on the 30% or 10% exceedance probability forecasts. Regardless of the forecast value users choose, they should be prepared to deal with either more or less water.



For more water supply and resource management information, contact:

Travis Kolling
Water Supply Specialist
230 N. First Ave., Suite 509
Phoenix, AZ 85003-1706
Phone: (602) 280-8834
Email: travis.kolling@az.usda.gov

The United States Department of Agriculture (USDA) prohibits discrimination in its programs on the basis of race, color, national origin, sex, religion, age, disability, political beliefs and marital or familial status. (Not all prohibited bases apply to all programs.) Persons with disabilities who require alternative means for communication of program information (Braille, large print, audiotape, etc.) should contact USDA's TARGET Center at 202-720-2600 (voice and TDD).

To file a complaint, write the Secretary of Agriculture, U.S. Department of Agriculture, Washington, D.C., 20250, or call 1-800-245-6340 (voice) or (202) 720-1127 (TDD). USDA is an equal employment opportunity employer.

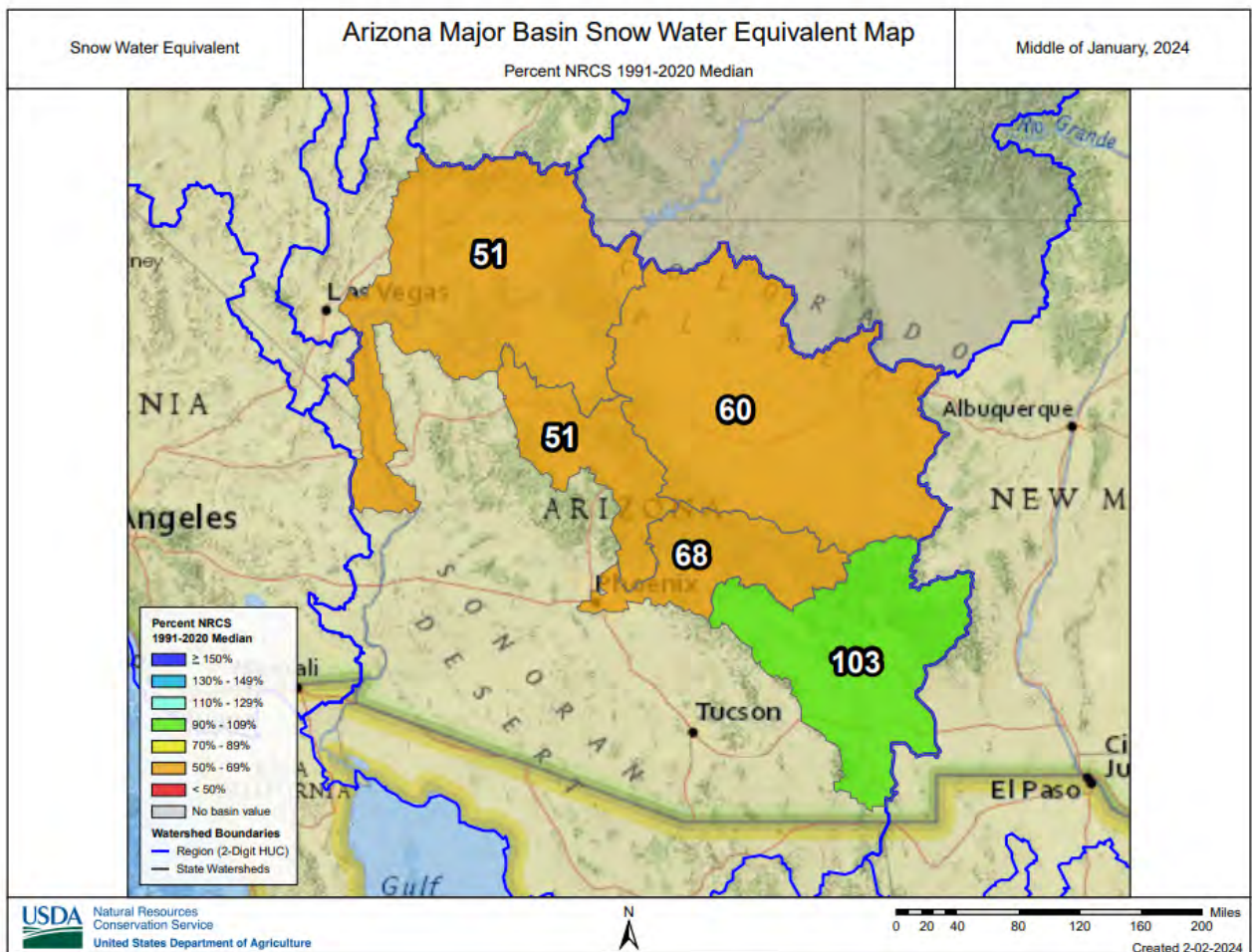
ARIZONA Basin Outlook Report as of January 15, 2024

SUMMARY

As of January 15, snowpack is at well below median to median levels throughout the major basins of the state. Precipitation for the first half of January was well above median in the major river basins. The Salt and Verde River reservoir system stands at 80 percent of capacity, while San Carlos Reservoir is at 38 percent of capacity. The forecast calls for well below median to above median runoff in the major basins for the spring runoff period.

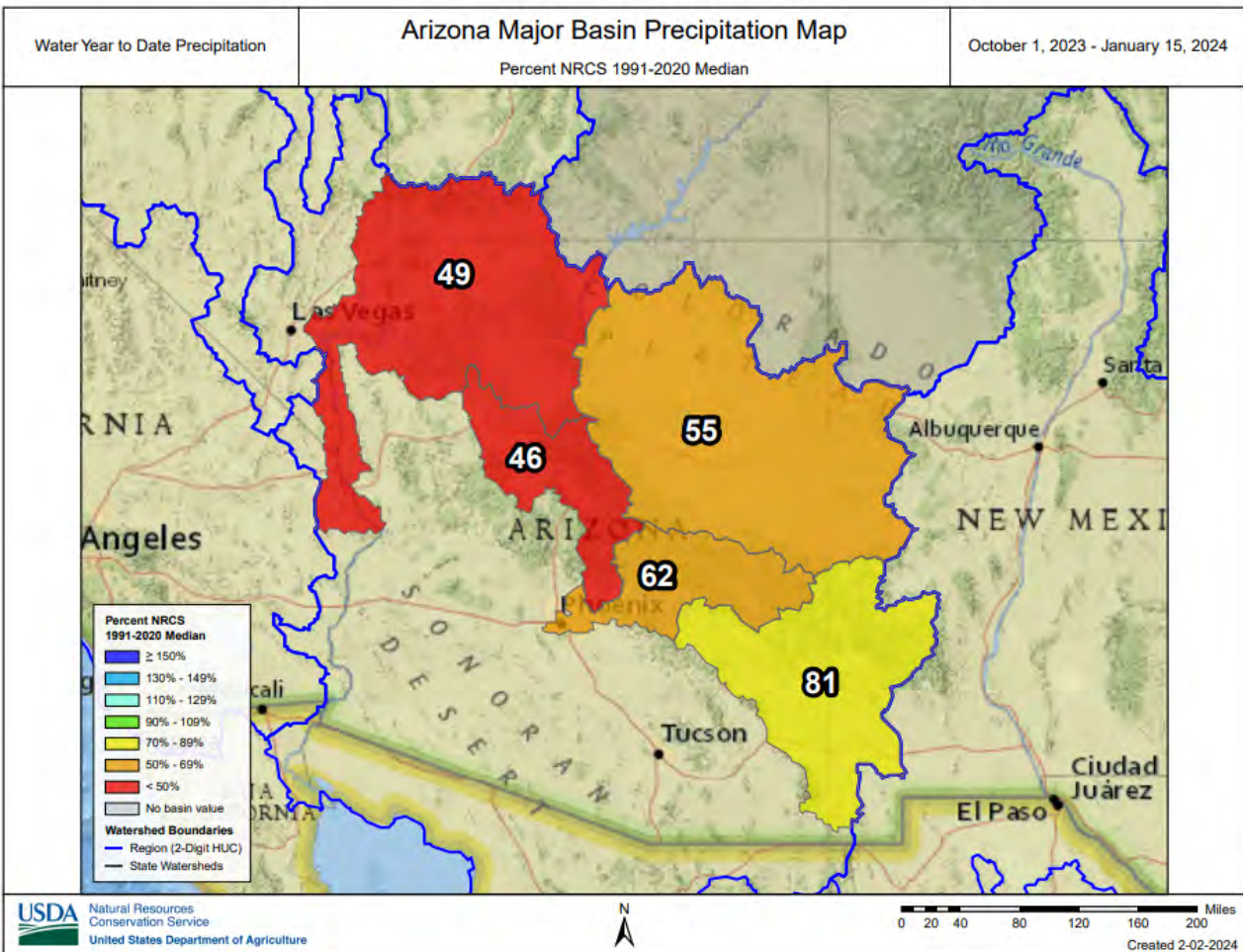
SNOWPACK

Snow water equivalent in the state's major river basins are well below median to median levels, ranging from 51 percent of median in the Verde River Basin to 103 percent of median in the Gila River Basin.



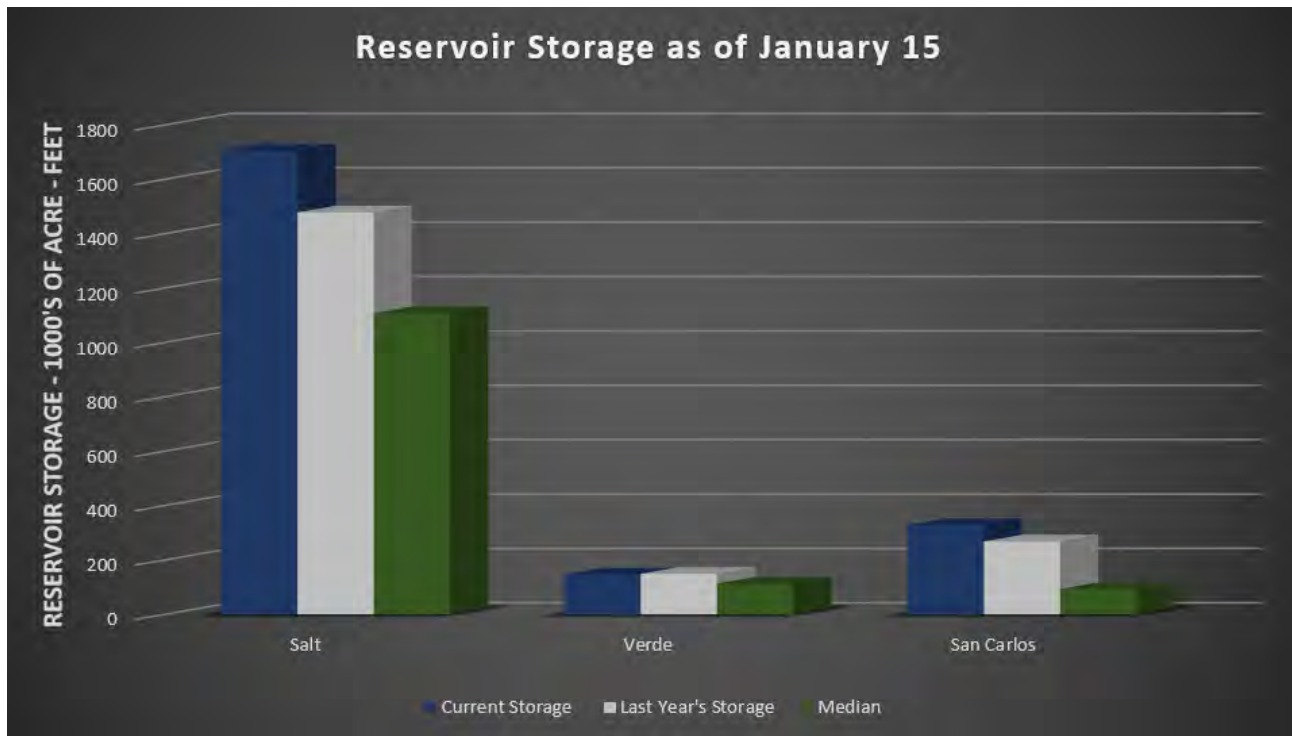
PRECIPITATION

Mountain data from NRCS SNOTEL sites and NWS Cooperator gages show that precipitation for the first half of January was well above median in the major river basins, while cumulative precipitation since October 1 ranged from well below median to below median levels throughout the state.



RESERVOIR STORAGE

As of January 15, the Salt and Verde River reservoir system stands at 80 percent of capacity. San Carlos Reservoir is currently at 38 percent of capacity.

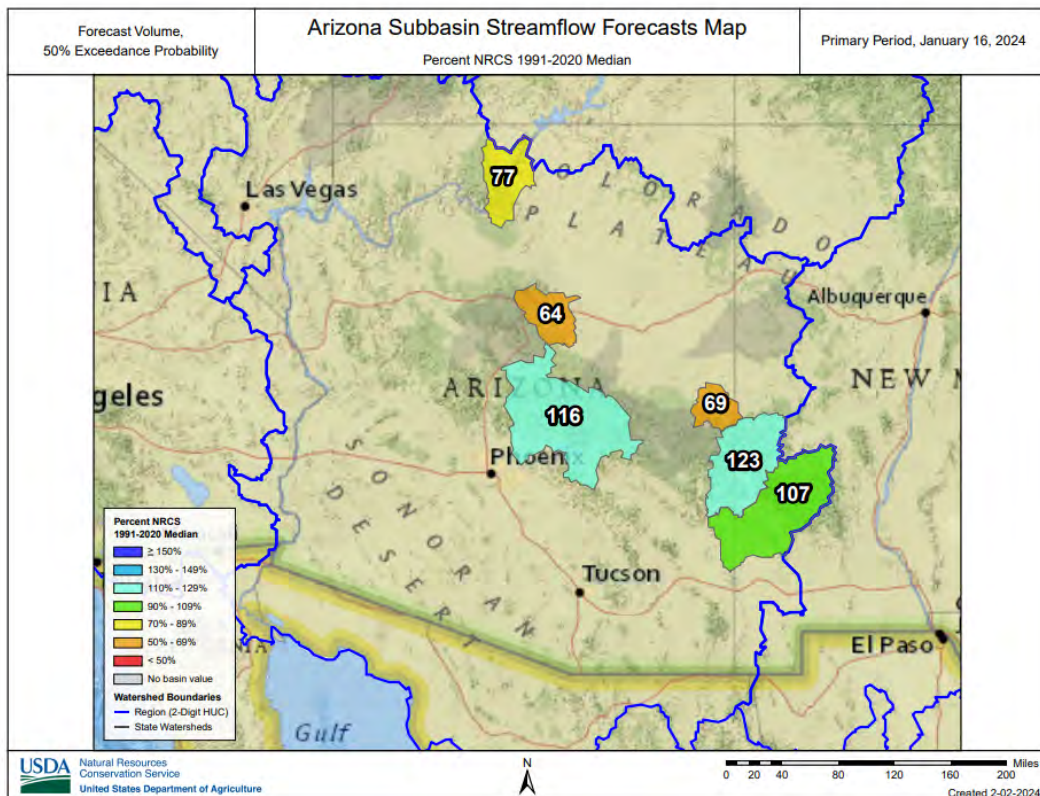
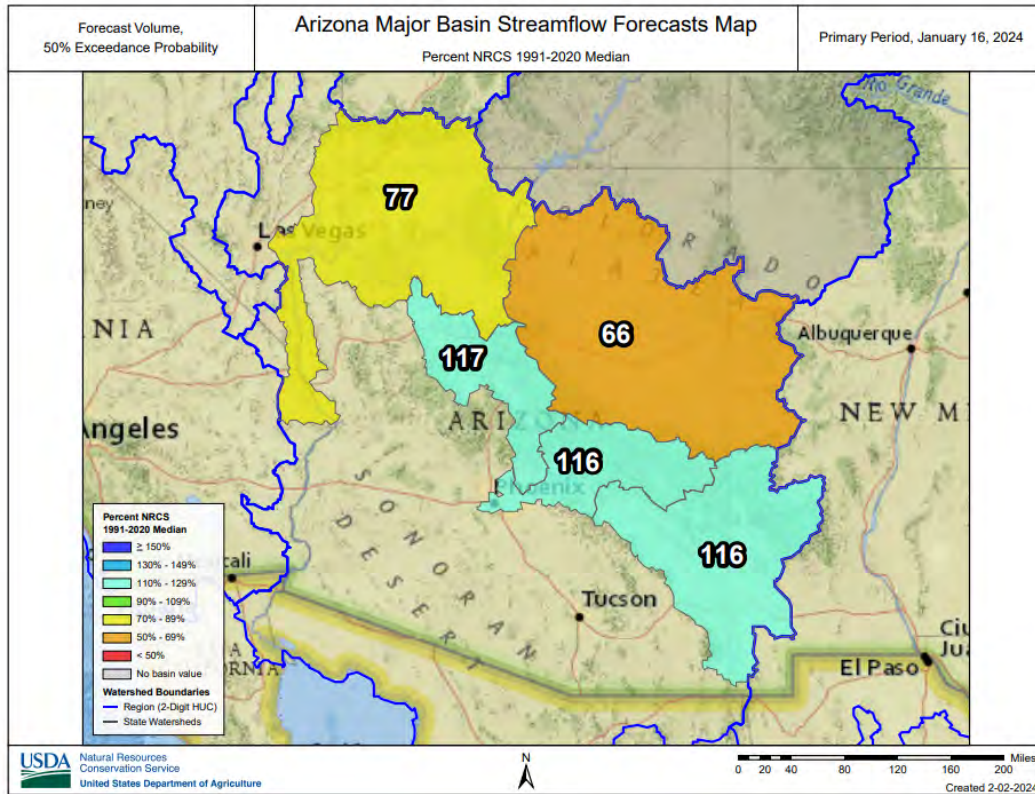


Key storage volumes displayed in thousands of acre-feet (x1000):

<u>Reservoir</u>	<u>Current Storage</u>	<u>Last Year Storage</u>	<u>30-Year Median</u>	<u>Storage Capacity</u>
Salt River System	1706.9	1478.8	1108.0	2025.8
Verde River System	147.0	149.4	113.7	287.4
San Carlos Reservoir	328.9	268.4	93.4	875.0
Lyman Lake	12.1	6.7	7.4	30.0
Lake Havasu	555.5	578.9	558.6	619.0
Lake Mohave	1640.0	1678.0	1651.0	1810.0
Lake Mead	9221.0	7366.0	15149.0	26159.0
Lake Powell	8278.5	5504.7	13711.0	24322.0

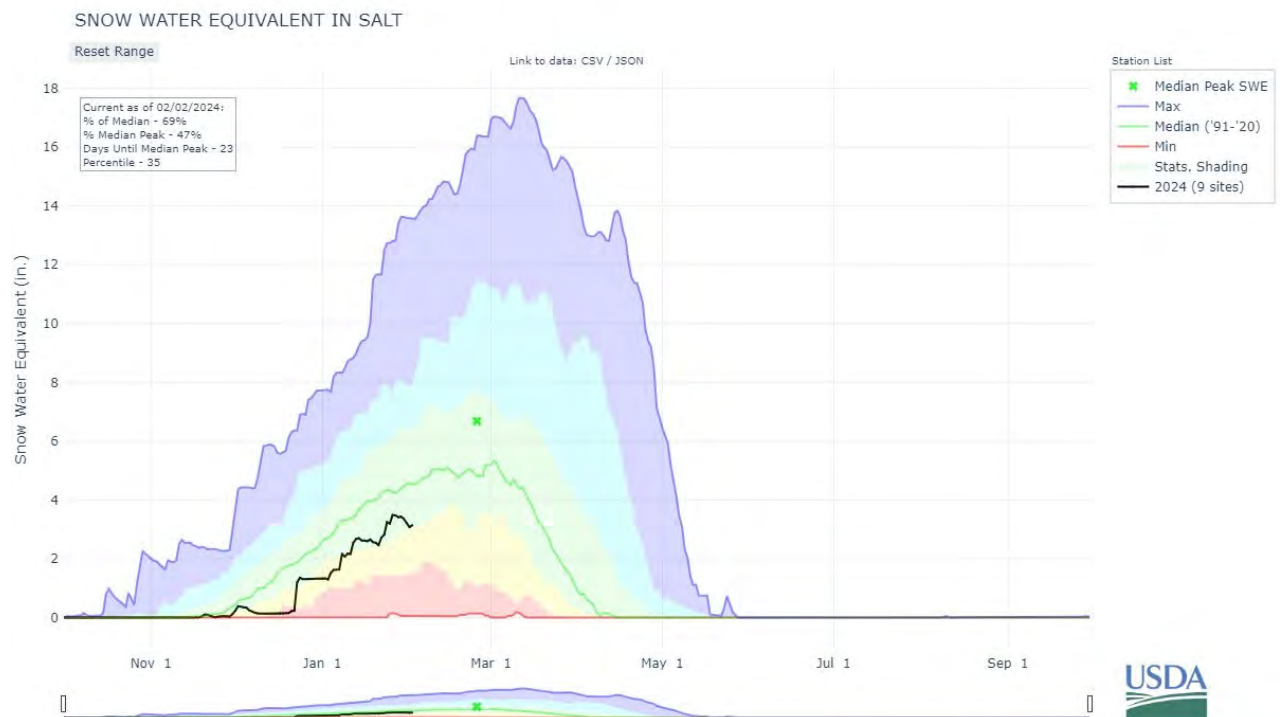
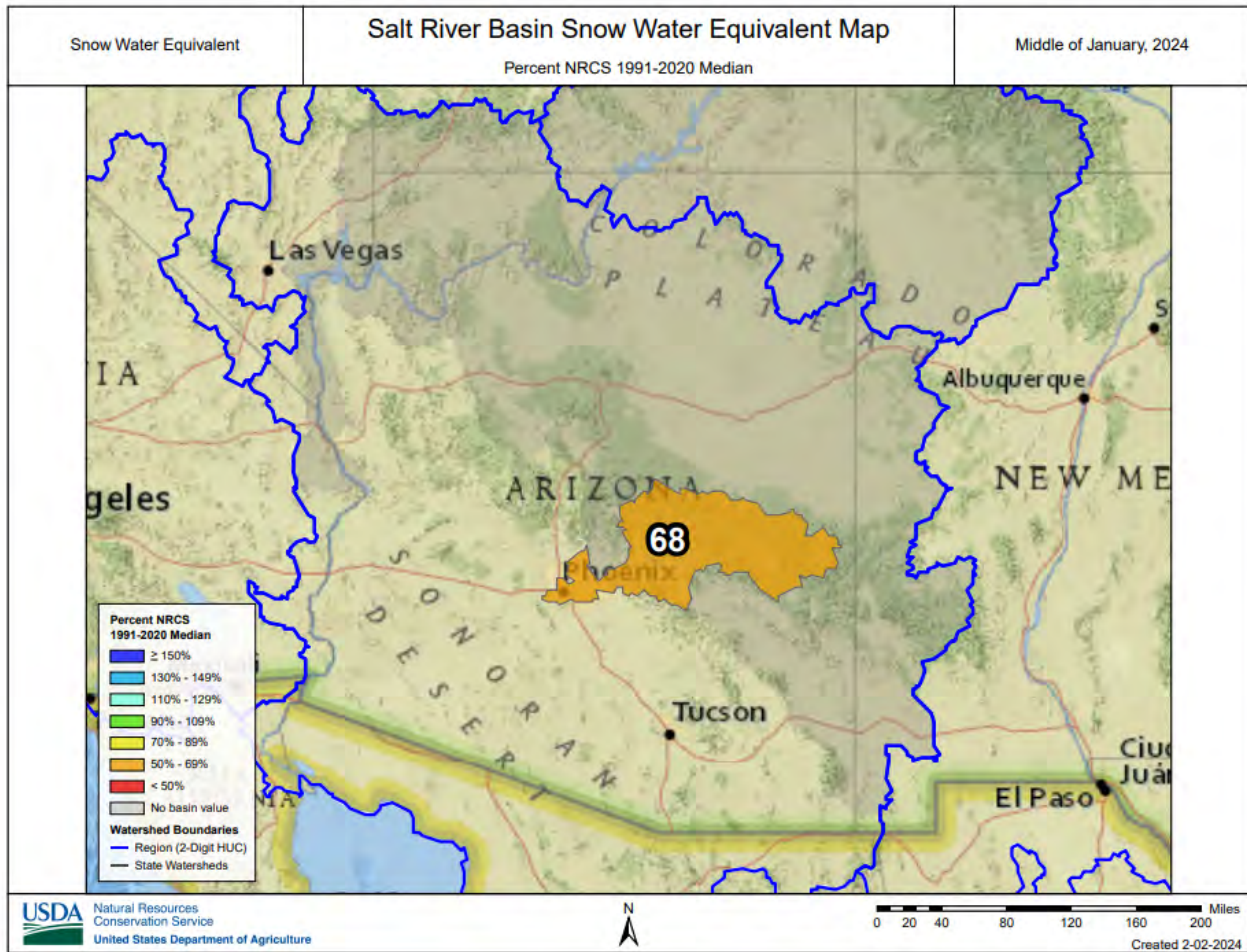
STREAMFLOW

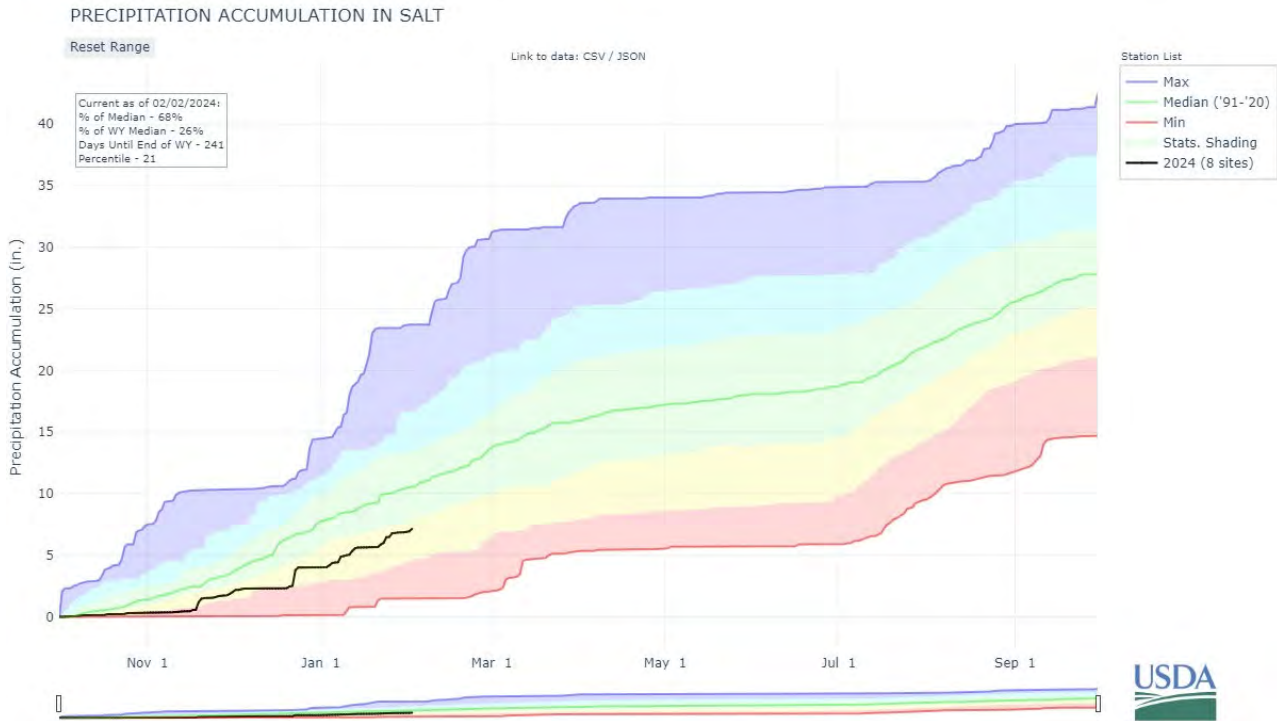
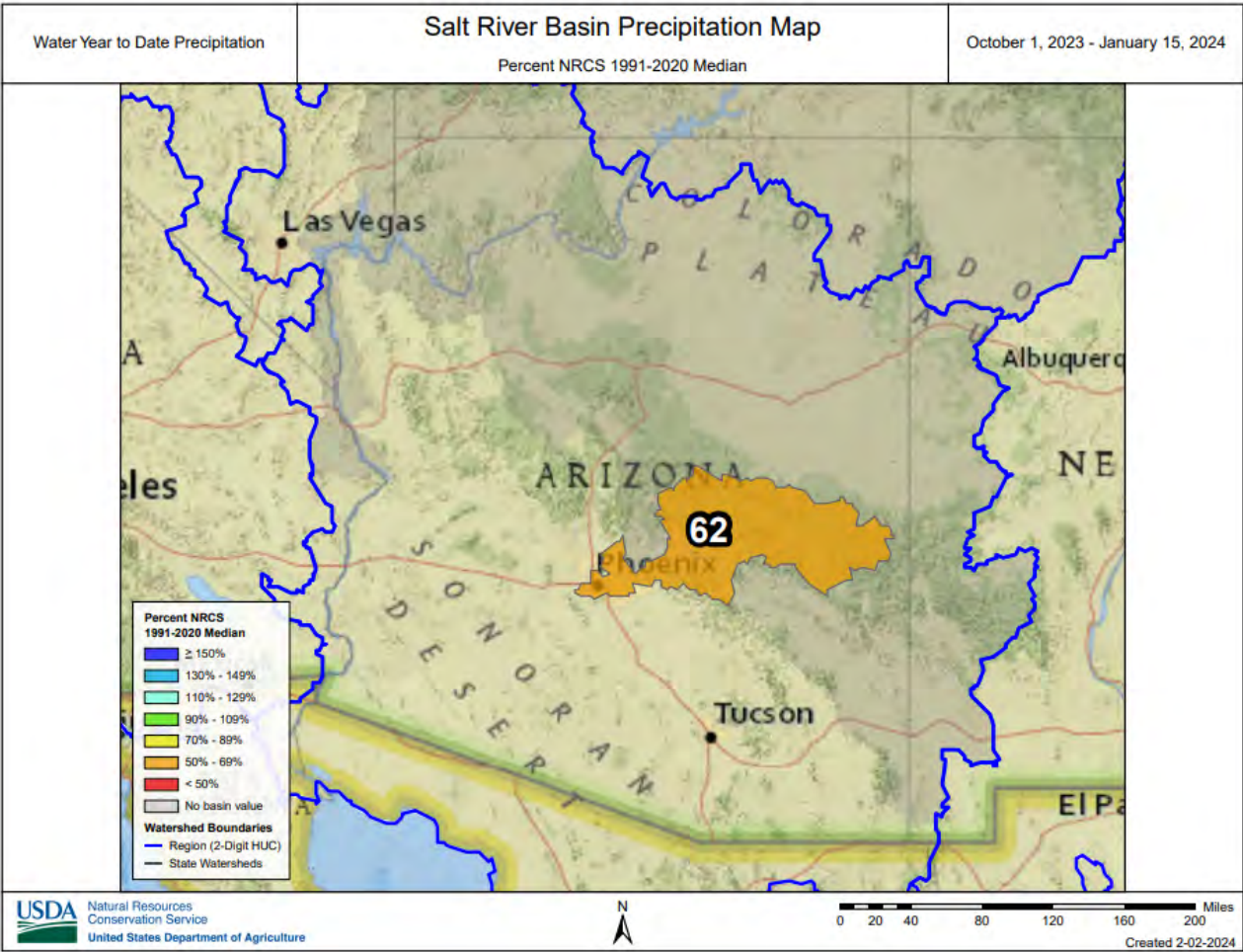
As of January 15, the forecast calls for well below median to above median streamflow for the spring runoff period, ranging from 66 percent of median in the Little Colorado River Basin to 117 percent of median in the Verde River Basin. Please refer to the basin forecast tables found in this report for more information regarding water supply forecasts.

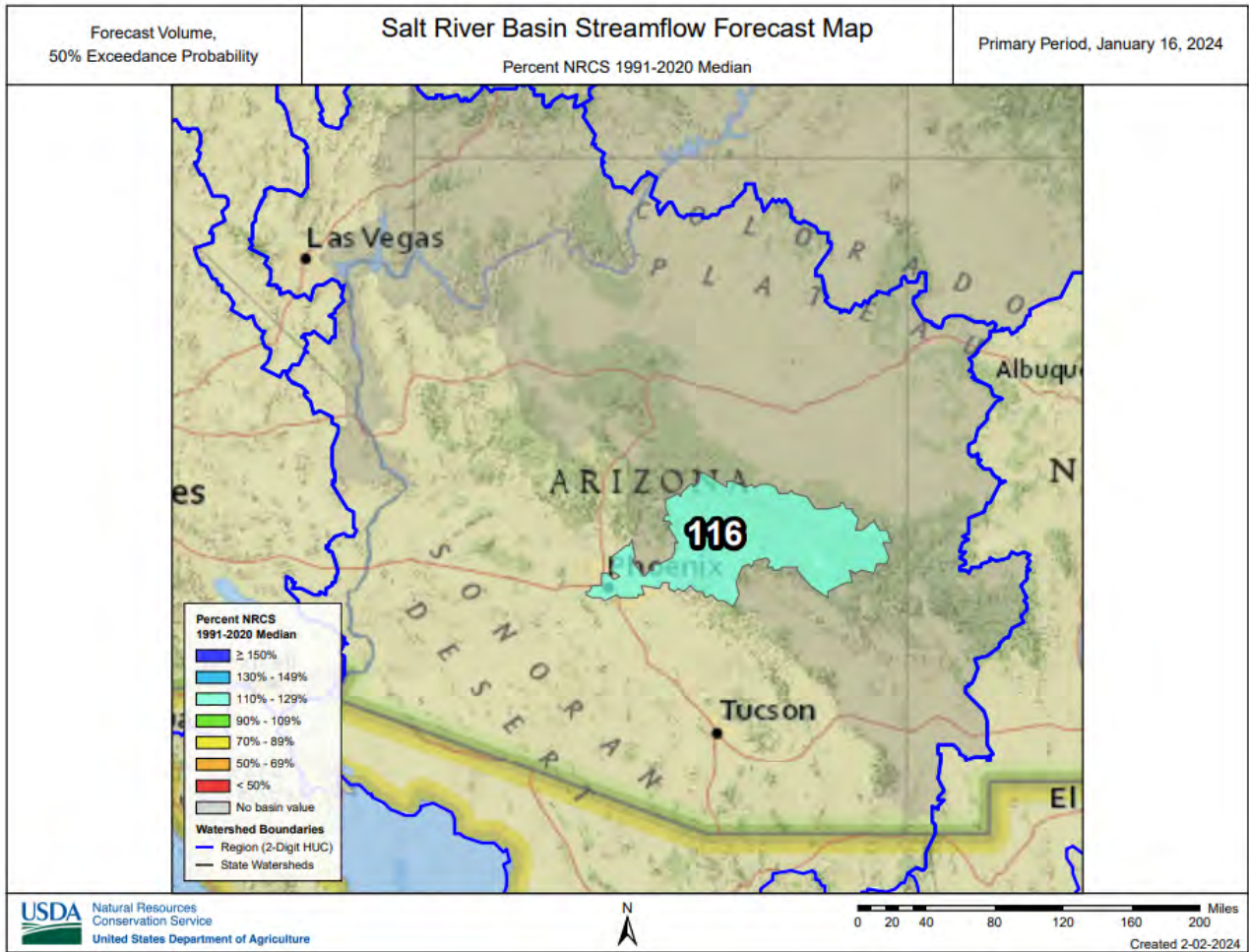


SALT RIVER BASIN as of January 15, 2024

Above median streamflow levels are forecast for the basin. In the Salt River, near Roosevelt, the forecast calls for 110% of median streamflow through May, while at Tonto Creek, the forecast calls for 115% of median streamflow through May. Snow survey measurements show the Salt snowpack to be at 68% of median.







Data Current as of: 1/18/2024 9:32:16 AM

Salt
Streamflow Forecasts - January 16, 2024

Forecast Exceedance Probabilities for Risk Assessment
Chance that actual volume will exceed forecast

Salt	Forecast Period	90% (KAF)	70% (KAF)	50% (KAF)	% Median	30% (KAF)	10% (KAF)	30yr Median (KAF)
Salt R nr Roosevelt	JAN	0.28	4.3	12	55%	26	61	22
	MAR-MAY	77	140	199	111%	270	410	179
	J15-MAY	111	197	275	115%	370	550	240
Tonto Ck ab Gun Ck nr Roosevelt	JAN	0.5	0.7	1.9	50%	6.5	22	3.8
	J15-MAY	7.1	24	45	125%	75	140	36

1) 90% and 10% exceedance probabilities are actually 95% and 5%

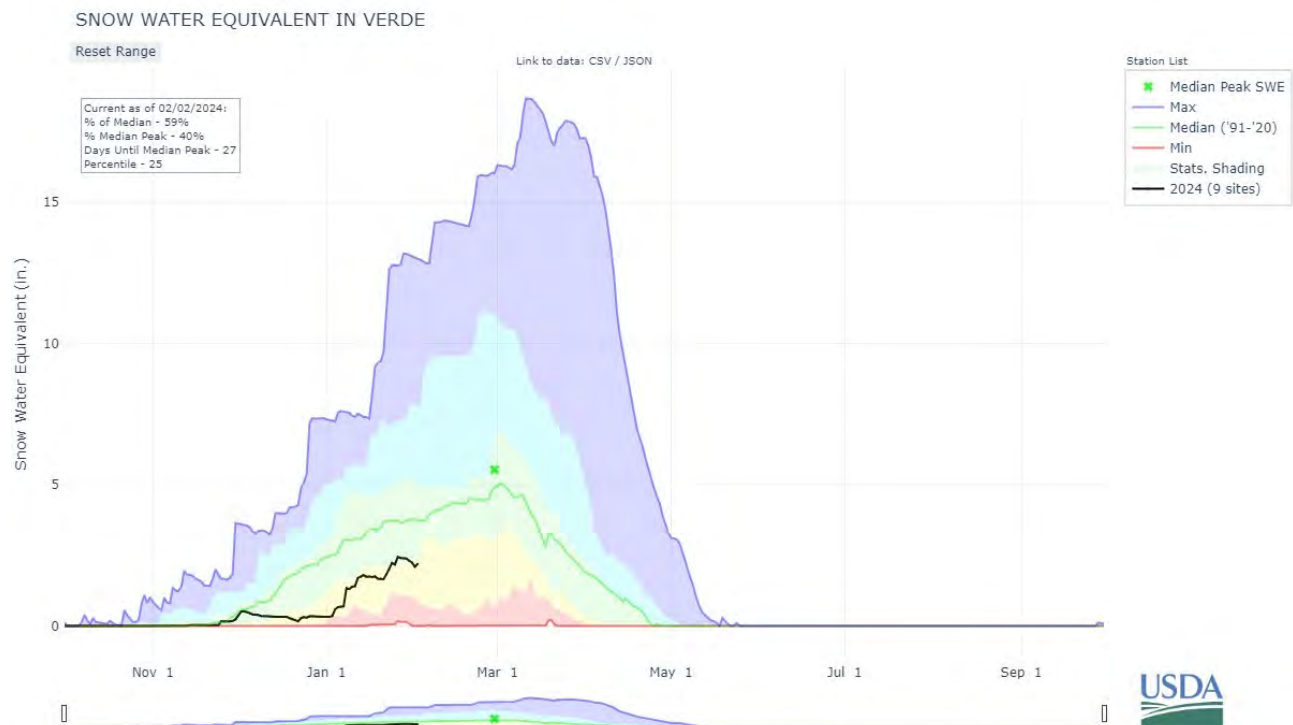
2) Forecasts are for unimpaired flows. Actual flow will be dependent on management of upstream reservoirs and diversions

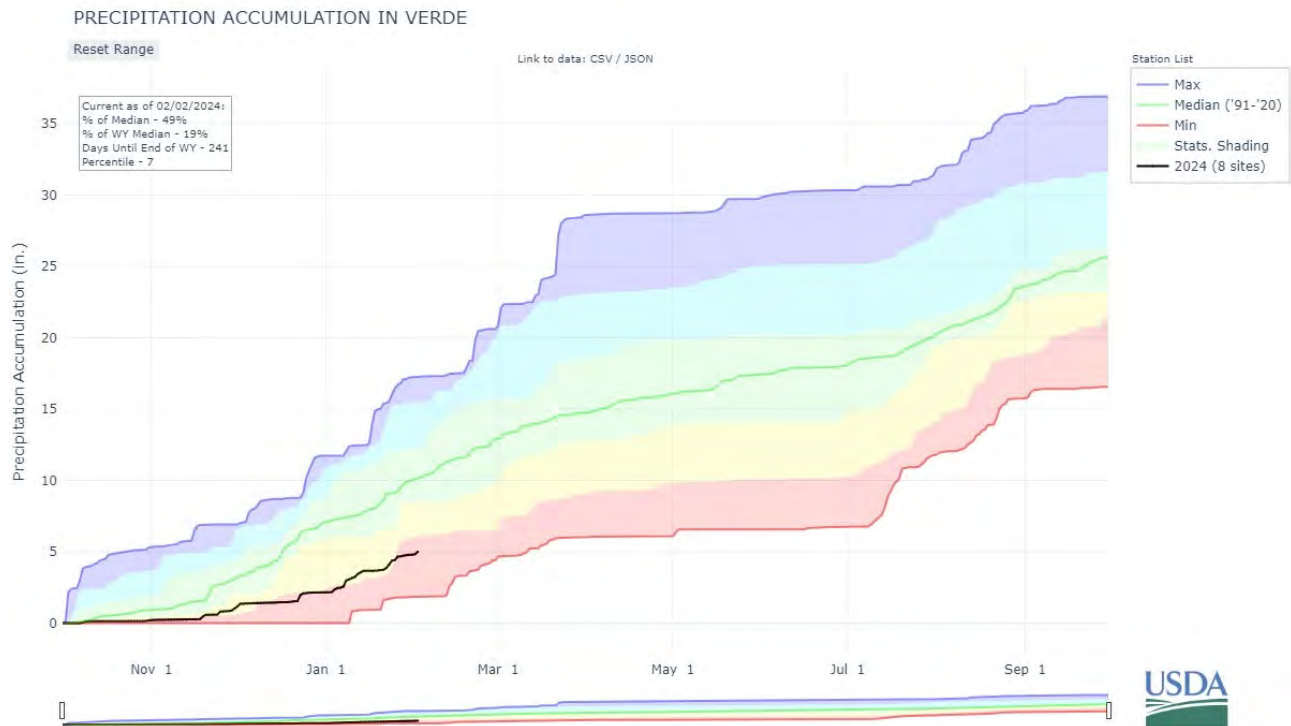
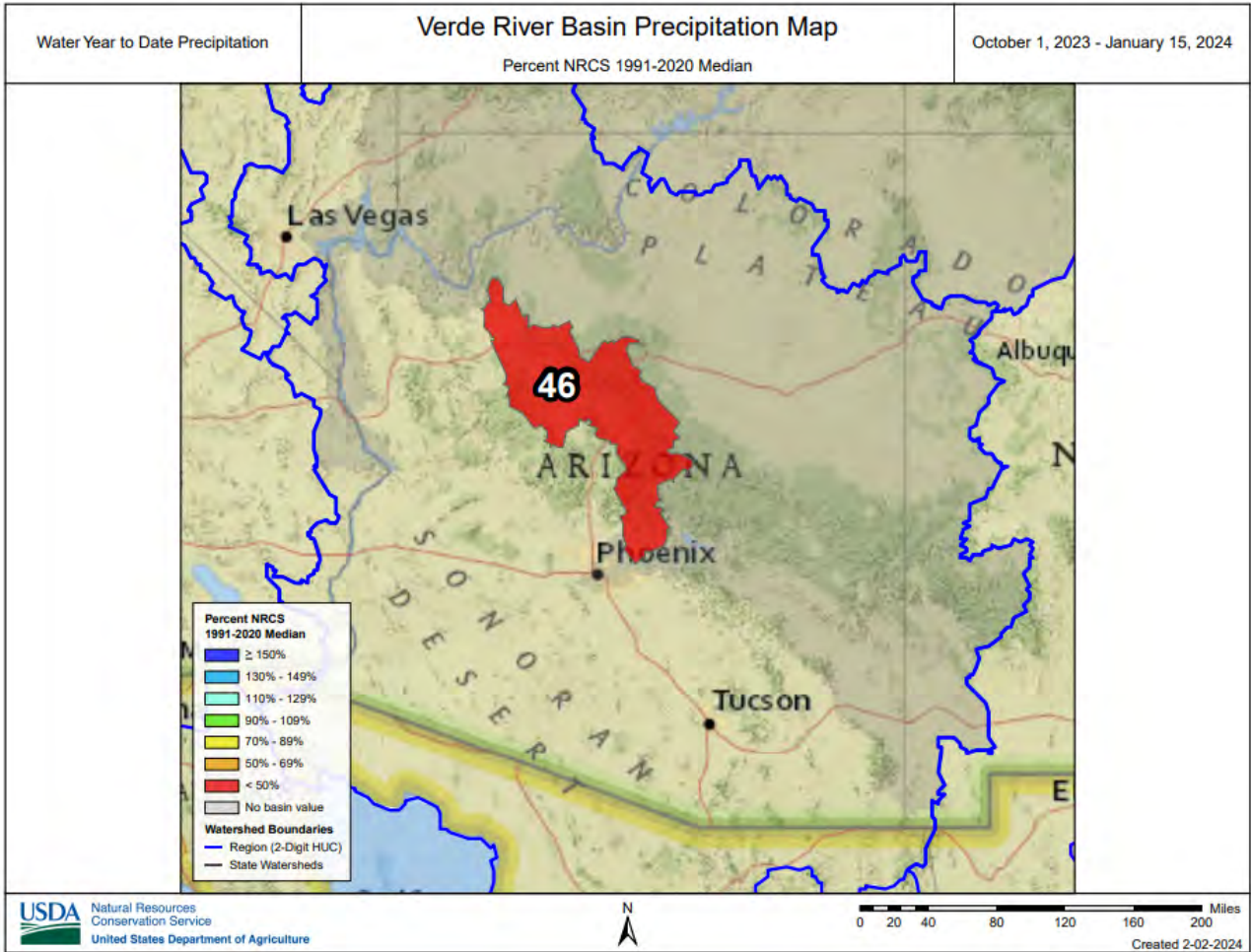
Reservoir Storage Middle of December, 2023	Current (KAF)	Last Year (KAF)	Median (KAF)	Capacity (KAF)
Salt River Reservoir System	1706.9	1478.8	1108.0	2025.8

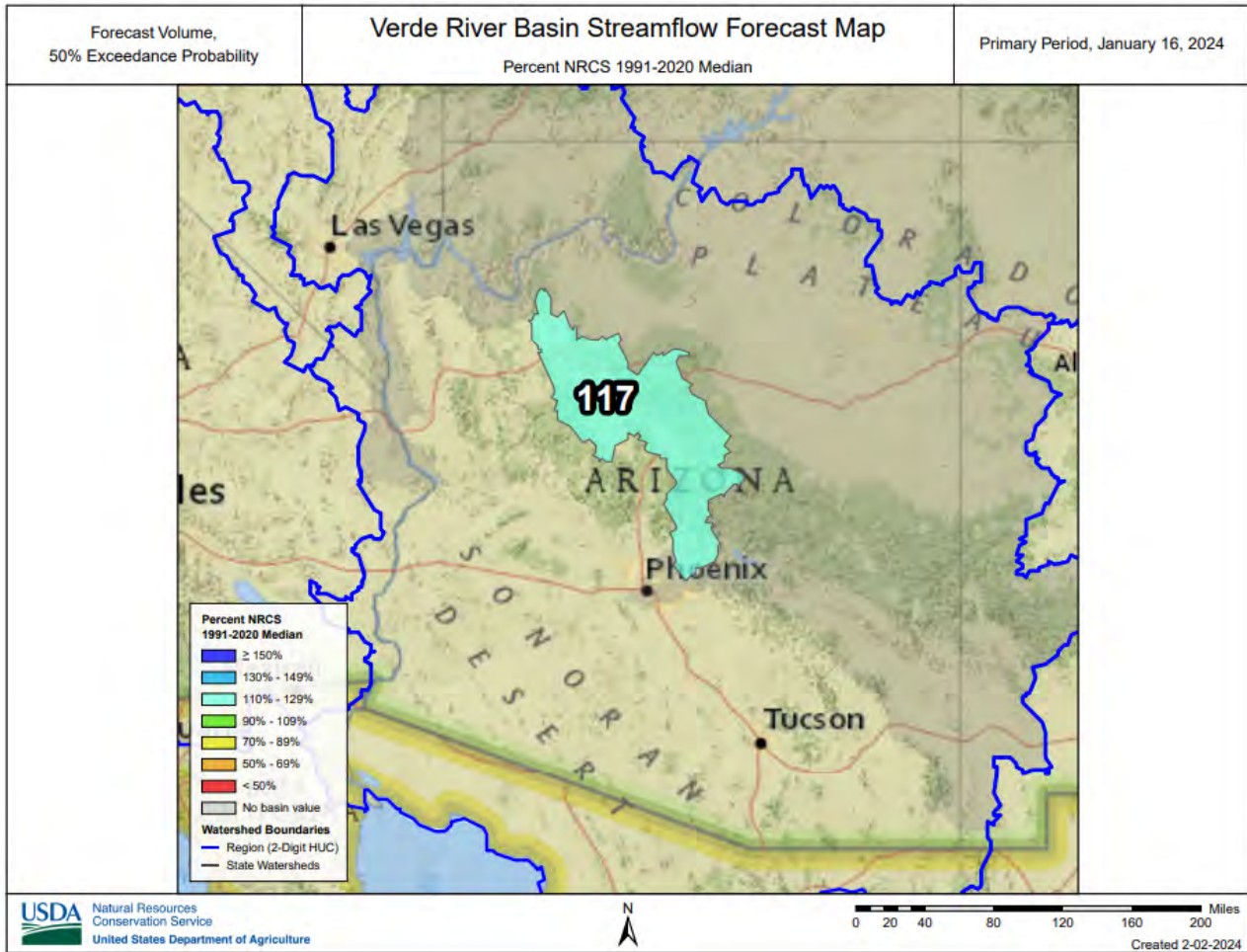
Watershed Snowpack Analysis January 16, 2024	# of Sites	% Median	Last Year % Median
Salt	9	68%	112%
Central Mogollon Rim	6	54%	160%
Upper Salt	6	78%	95%

VERDE RIVER BASIN as of January 15, 2024

Above median streamflow levels are forecast for the basin. In the Verde River above Horseshoe Dam, the forecast calls for 117% of median streamflow through May. Snow survey measurements show the Verde snowpack to be at 51% of median.







Data Current as of: 1/18/2024 9:32:18 AM

Verde Streamflow Forecasts - January 16, 2024

Forecast Exceedance Probabilities for Risk Assessment
Chance that actual volume will exceed forecast

Verde	Forecast Period	90% (KAF)	70% (KAF)	50% (KAF)	% Median	30% (KAF)	10% (KAF)	30yr Median (KAF)
Verde R bl Tangle Ck ab Horseshoe Dam	JAN	0.75	6.8	17	71%	34	76	24
	J15-MAY	55	113	169	117%	240	380	145

1) 90% and 10% exceedance probabilities are actually 95% and 5%

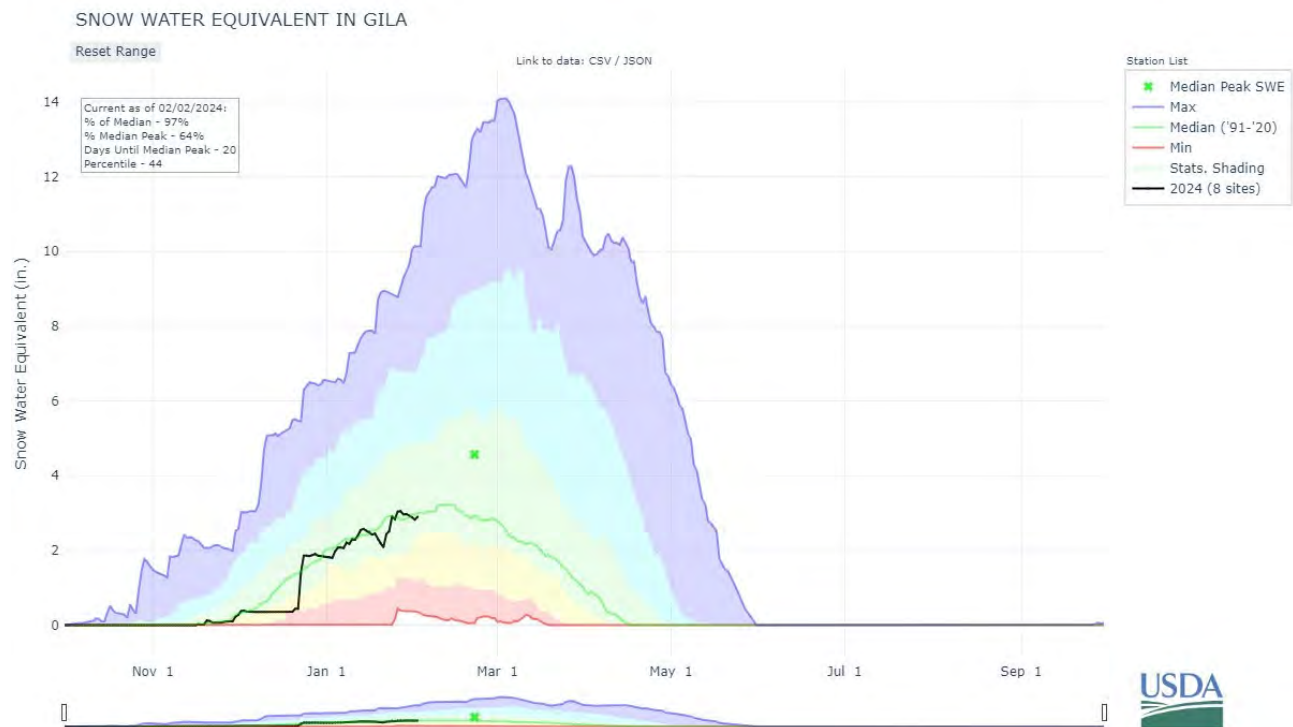
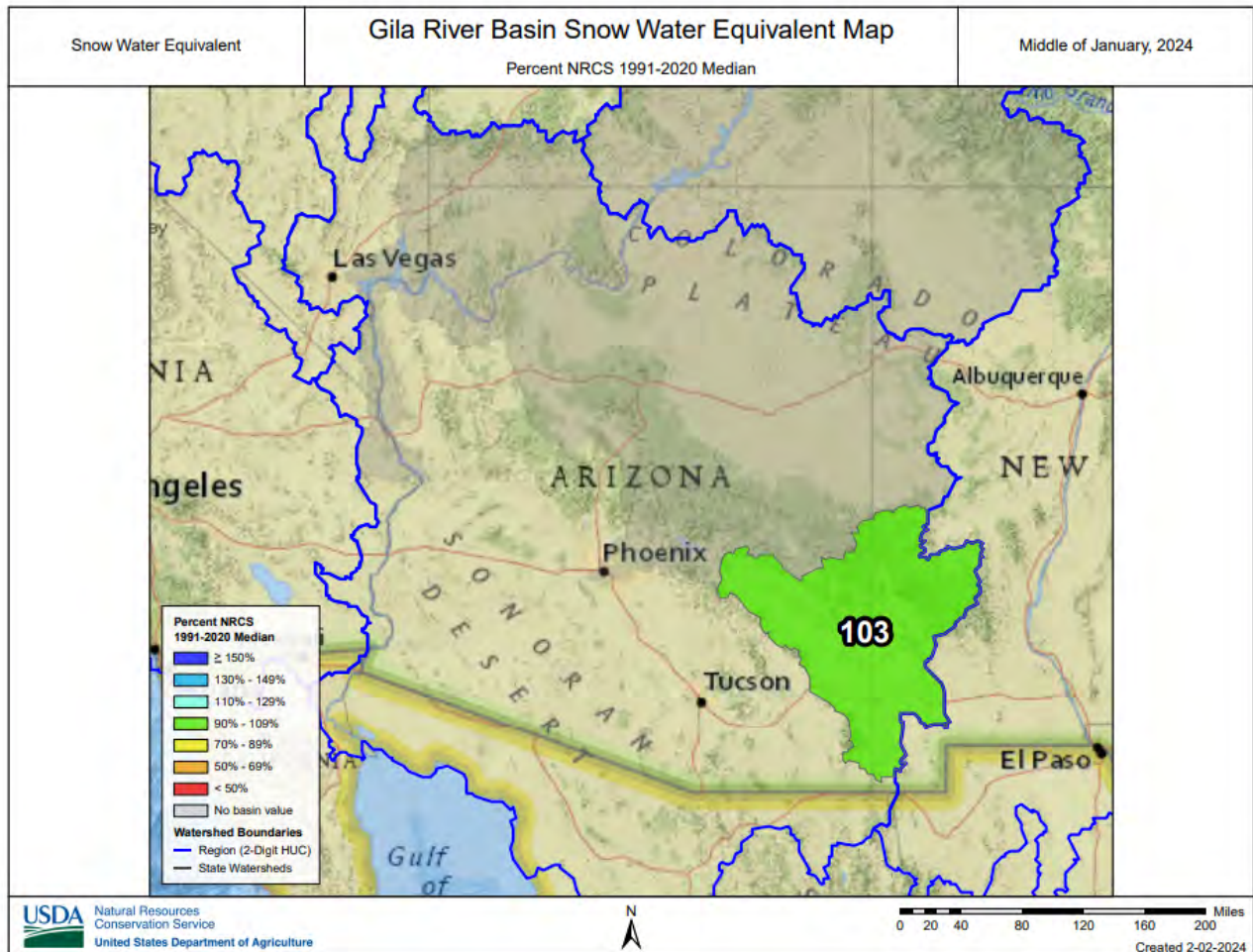
2) Forecasts are for unimpaired flows. Actual flow will be dependent on management of upstream reservoirs and diversions

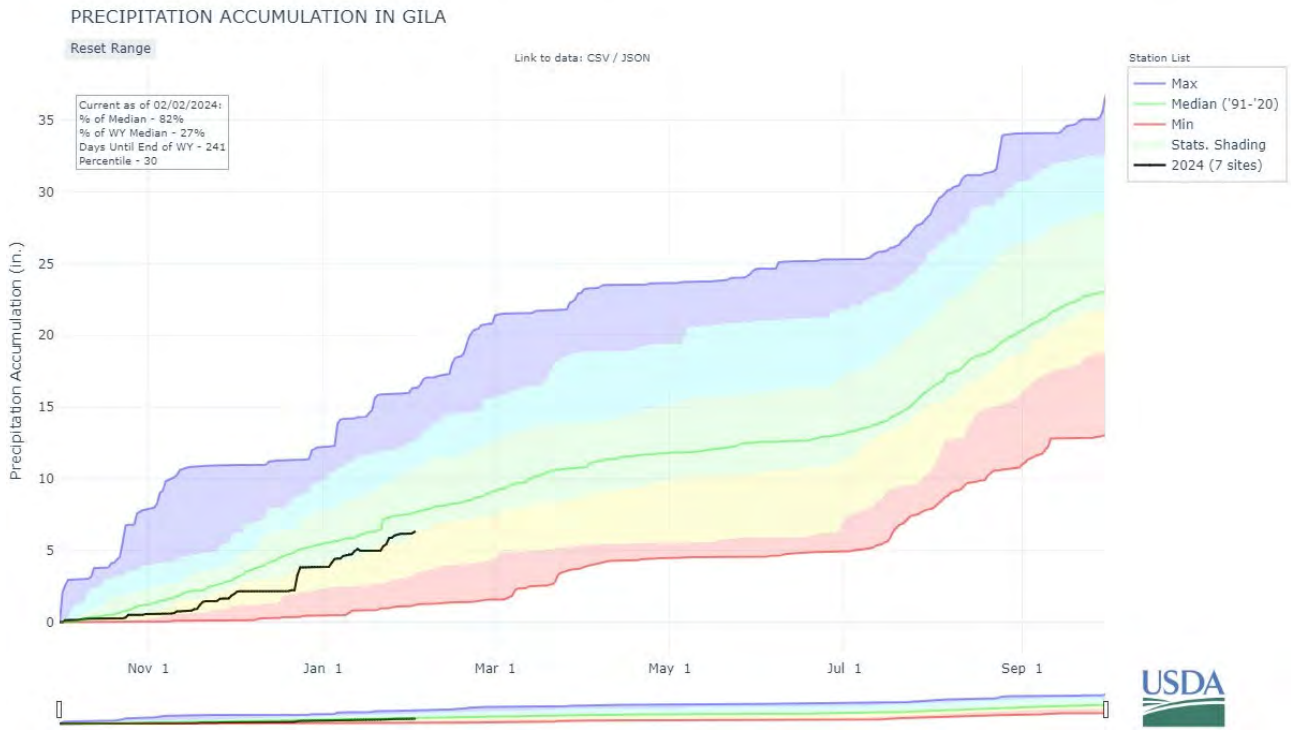
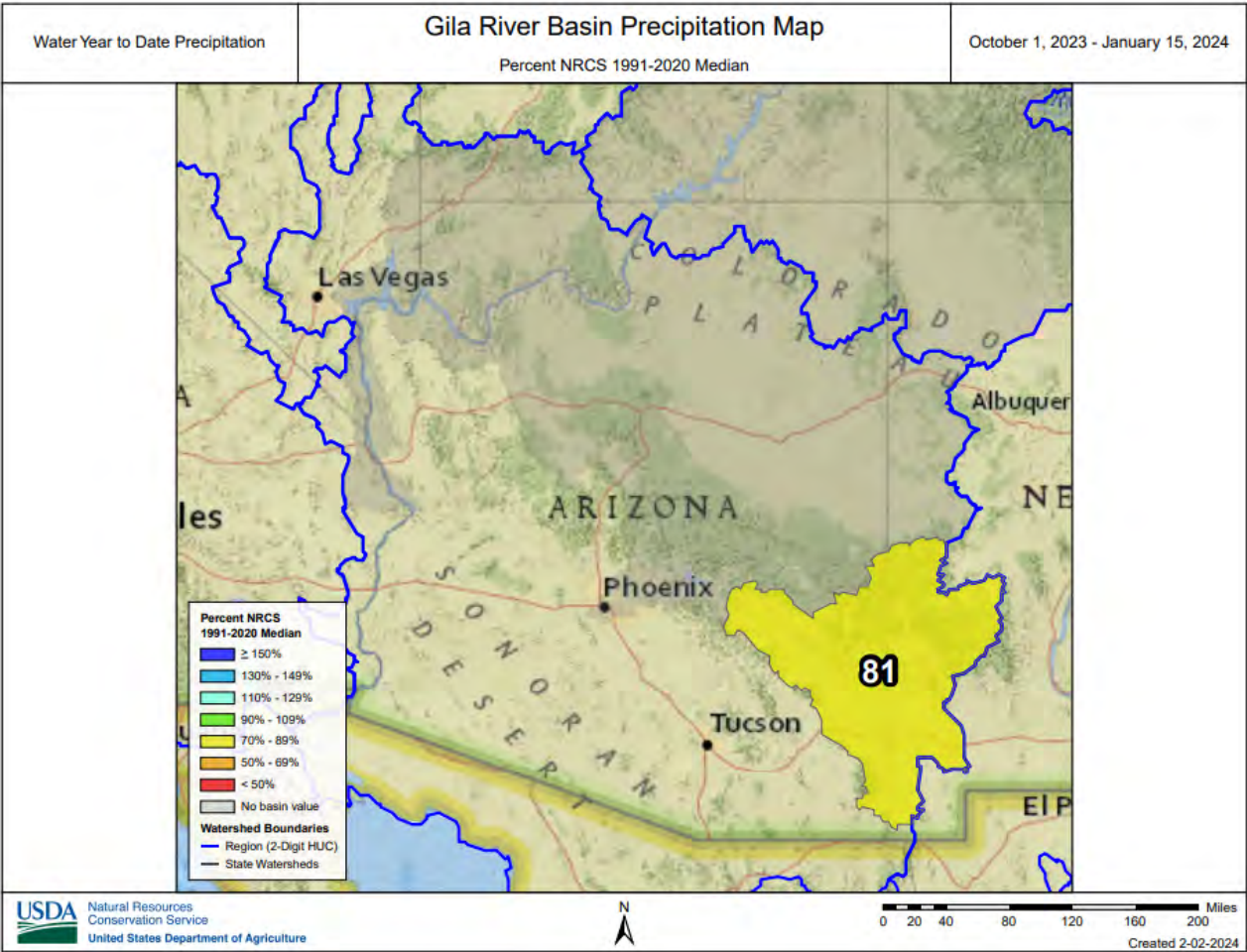
Reservoir Storage Middle of December, 2023	Current (KAF)	Last Year (KAF)	Median (KAF)	Capacity (KAF)
Verde River Reservoir System	147.0	149.4	113.7	287.4

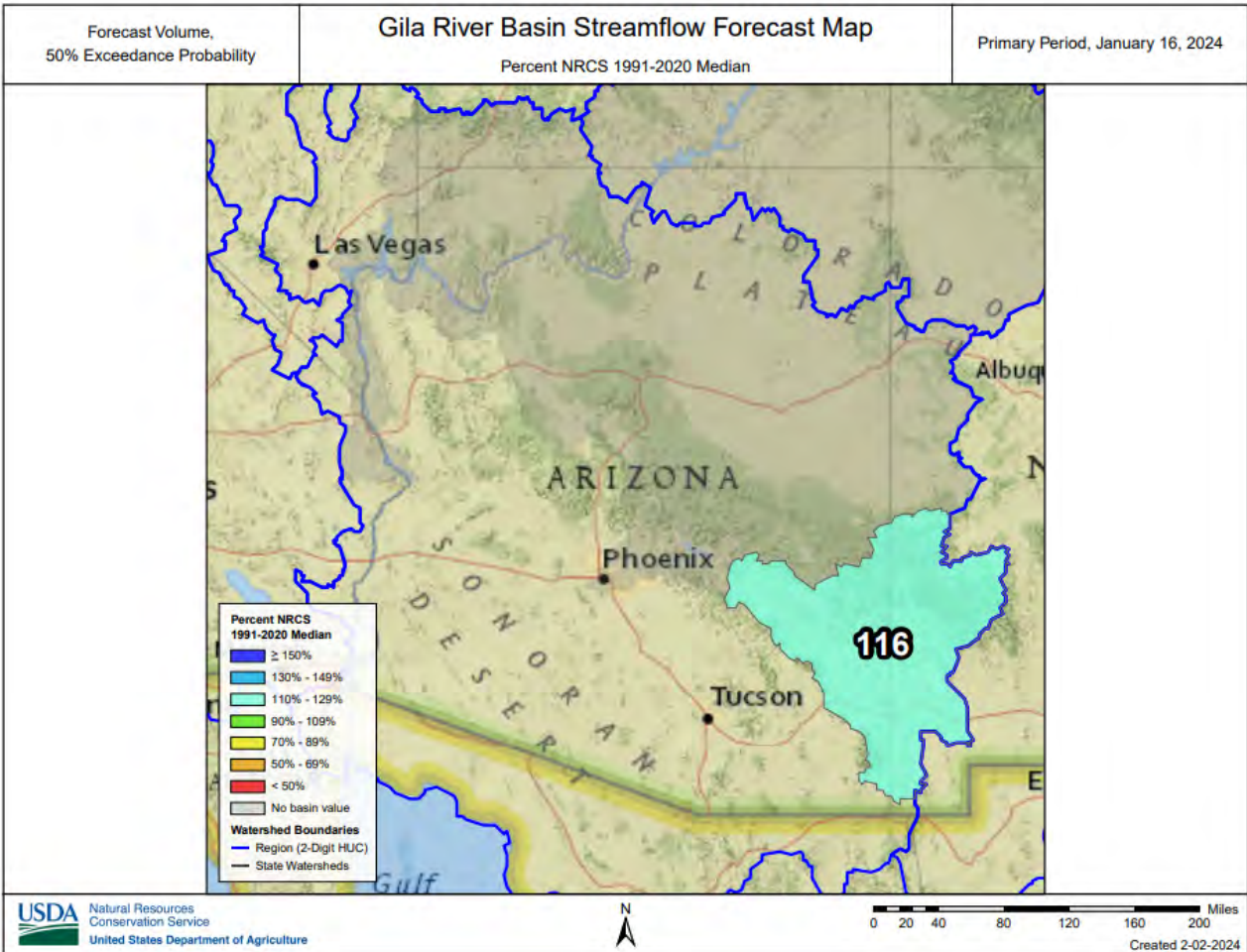
Watershed Snowpack Analysis January 16, 2024	# of Sites	% Median	Last Year % Median
Verde	9	51%	196%
Upper Verde	7	49%	205%

SAN FRANCISCO-UPPER GILA RIVER BASIN as of January 15, 2024

Above median streamflow levels are forecast for the basin. In the San Francisco River, at Clifton, the forecast calls for 121% of median streamflow levels through May. In the Gila River, near Solomon, the forecast calls for 110% of median streamflow levels through May. At San Carlos Reservoir, inflow to the lake is forecast at 134% of median through May. Snow survey measurements show the snowpack for this basin to be at 103% of median.







Data Current as of: 1/18/2024 9:32:14 AM

Gila Streamflow Forecasts - January 16, 2024

Forecast Exceedance Probabilities for Risk Assessment
Chance that actual volume will exceed forecast

Gila	Forecast Period	90% (KAF)	70% (KAF)	50% (KAF)	% Median	30% (KAF)	10% (KAF)	30yr Median (KAF)
San Francisco R at Glenwood	J15-MAY	6.6	13.9	21	126%	30	48	16.7
Gila R at Gila	J15-MAY	21	37	52	111%	70	103	47
Gila R nr Solomon	JAN	0.1	3.2	10	63%	23	57	16
Gila R bl Blue Ck nr Virden	J15-MAY	32	70	110	110%	162	265	100
San Francisco R at Clifton	J15-MAY	21	41	61	103%	86	135	59
San Carlos Reservoir Inflow	J15-MAY	15.3	33	51	121%	74	120	42
	J15-MAY	16.4	49	86	134%	138	250	64

1) 90% and 10% exceedance probabilities are actually 95% and 5%

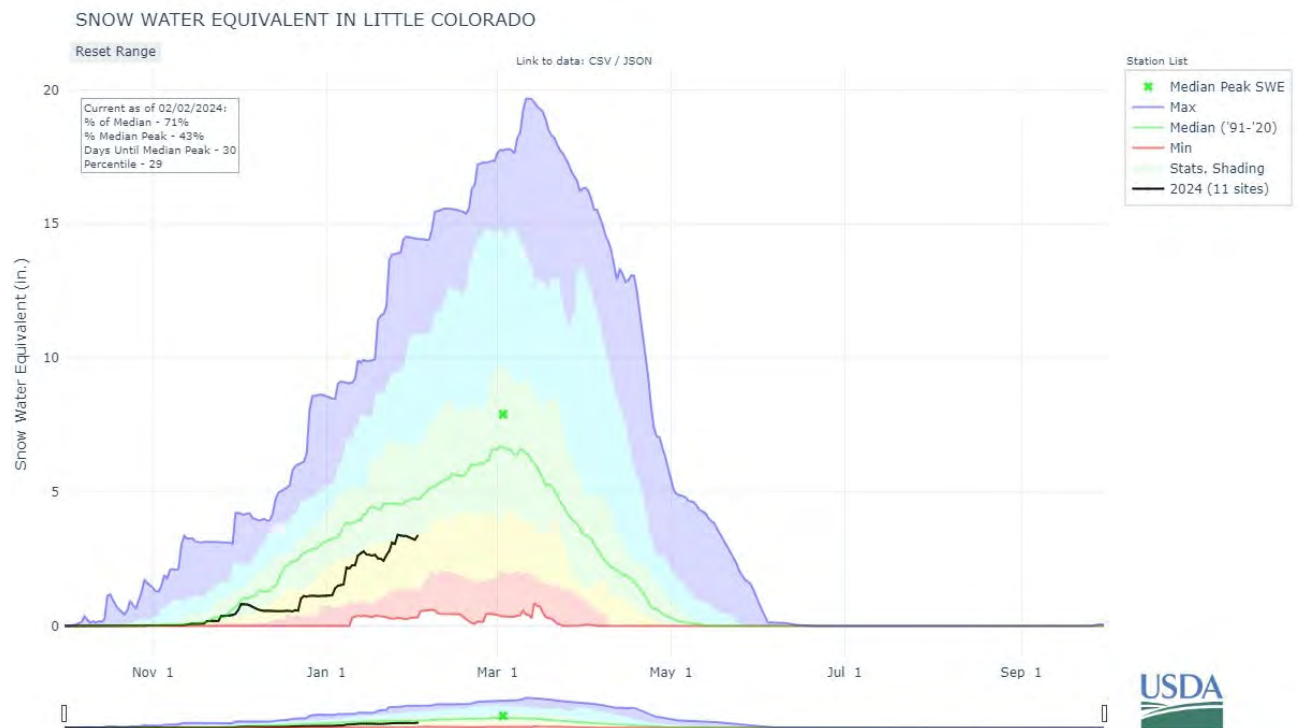
2) Forecasts are for unimpaired flows. Actual flow will be dependent on management of upstream reservoirs and diversions

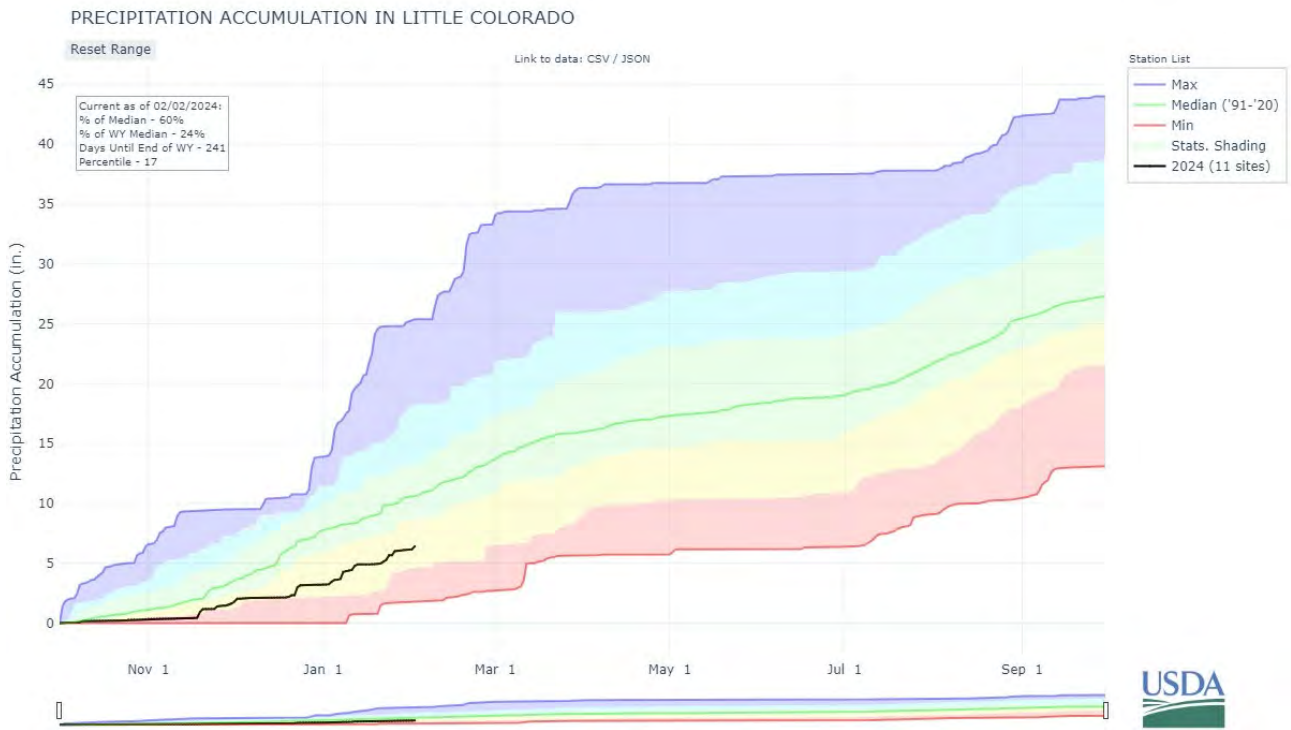
Reservoir Storage Middle of December, 2023	Current (KAF)	Last Year (KAF)	Median (KAF)	Capacity (KAF)
San Carlos Reservoir	328.9	268.4	93.4	875.0

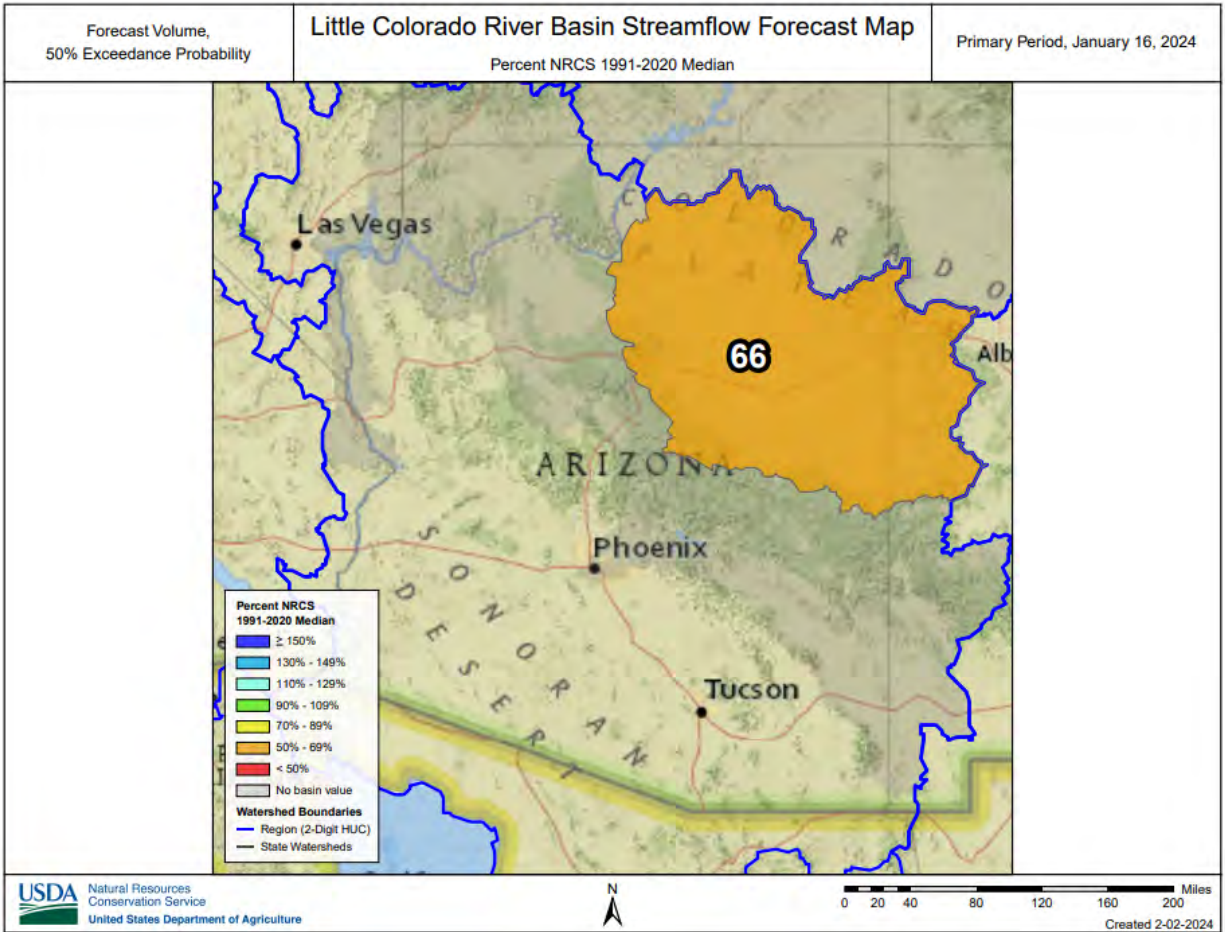
Watershed Snowpack Analysis January 16, 2024	# of Sites	% Median	Last Year % Median
Gila	8	102%	101%
San Francisco	6	110%	112%
Upper Gila	3	97%	99%

LITTLE COLORADO RIVER BASIN as of January 15, 2024

Well below median streamflow levels are forecast for the basin. In the Little Colorado River, above Lyman Lake, the forecast calls for 69% of median streamflow through June. At Blue Ridge (C.C. Cragin) Reservoir, inflow to the lake is forecast at 65% of median through May. Snow survey measurements show the snowpack for this basin to be at 60% of median.







Data Current as of: 1/18/2024 9:32:20 AM

Little Colorado Streamflow Forecasts - January 16, 2024

Forecast Exceedance Probabilities for Risk Assessment
Chance that actual volume will exceed forecast

Little Colorado	Forecast Period	90% (KAF)	70% (KAF)	50% (KAF)	% Median	30% (KAF)	10% (KAF)	30yr Median (KAF)
Zuni R ab Black Rock Reservoir								
Bowl Canyon Ck ab Asaayi Lake								
Blue Ridge Reservoir Inflow	JAN-MAY	0.49	3.5	8.2	65%	15.9	34	12.6
Rio Nutria nr Ramah								
Lake Mary Reservoir Inflow	JAN-MAY	0.93	1.93	2.9	64%	4.2	6.6	4.5
Little Colorado R ab Lyman Lake	JAN-JUN	1.02	2.6	4.1	69%	5.9	9.2	5.9

- 1) 90% and 10% exceedance probabilities are actually 95% and 5%
- 2) Forecasts are for unimpaired flows. Actual flow will be dependent on management of upstream reservoirs and diversions

Reservoir Storage Middle of December, 2023	Current (KAF)	Last Year (KAF)	Median (KAF)	Capacity (KAF)
Lyman Reservoir	12.1	6.7	7.4	30.0
Cragin Dam Reservoir	7.8	7.5	7.5	15.0

Watershed Snowpack Analysis January 16, 2024	# of Sites	% Median	Last Year % Median
Little Colorado	11	60%	144%
Canyon Diablo	4	65%	172%
Chevelon Canyon	2	49%	130%
Little Colorado Headwaters	3	65%	75%
Zuni	0		

Basinwide Summary: January 16, 2024
 (Medians based on 1991-2020 reference period)

Snowpack Summary for January 16, 2024

Gila	Network	Elevation (ft)	Depth (in)	SWE (in)	Median (in)	% Median	Last Year SWE (in)	Last Year % Median
Beaver Head	SNOTEL	8076	10	2.5	2.6	96%	2.5	96%
Coronado Trail	SC	8350			2.2		1.3	59%
Coronado Trail	SNOTEL	8418	10	2.5	2.2	114%	2.7	123%
Frisco Divide	SNOTEL	8013	8	1.9	1.8	106%	1.8	100%
Hannagan Meadows	SNOTEL	9027	17	4.2	5.2	81%	5.1	98%
Lookout Mountain	SNOTEL	8509	5	1.7	1.4	121%	0.7	50%
Nutrioso	SC	8500			1.0		0.6	60%
Nutrioso	SNOTEL	8571	4	1.7	0.5	340%	0.5	100%
Signal Peak	SNOTEL	8405	1	0.4	2.0	20%	1.0	50%
Silver Creek Divide	SNOTEL	9096	17	4.9	3.8	129%	5.4	142%
State Line	SC	8000			1.6			
Basin Index						102%		101%
# of sites							8	8

San Francisco	Network	Elevation (ft)	Depth (in)	SWE (in)	Median (in)	% Median	Last Year SWE (in)	Last Year % Median
Beaver Head	SNOTEL	8076	10	2.5	2.6	96%	2.5	96%
Coronado Trail	SC	8350			2.2		1.3	59%
Coronado Trail	SNOTEL	8418	10	2.5	2.2	114%	2.7	123%
Frisco Divide	SNOTEL	8013	8	1.9	1.8	106%	1.8	100%
Hannagan Meadows	SNOTEL	9027	17	4.2	5.2	81%	5.1	98%
Nutrioso	SC	8500			1.0		0.6	60%
Nutrioso	SNOTEL	8571	4	1.7	0.5	340%	0.5	100%
Silver Creek Divide	SNOTEL	9096	17	4.9	3.8	129%	5.4	142%
State Line	SC	8000			1.6			
Basin Index						110%		112%
# of sites							6	6

Upper Gila	Network	Elevation (ft)	Depth (in)	SWE (in)	Median (in)	% Median	Last Year SWE (in)	Last Year % Median
Lookout Mountain	SNOTEL	8509	5	1.7	1.4	121%	0.7	50%
Signal Peak	SNOTEL	8405	1	0.4	2.0	20%	1.0	50%
Silver Creek Divide	SNOTEL	9096	17	4.9	3.8	129%	5.4	142%
Basin Index						97%		99%
# of sites							3	3

Salt	Network	Elevation (ft)	Depth (in)	SWE (in)	Median (in)	% Median	Last Year SWE (in)	Last Year % Median
Baldy	SNOTEL	9221	14	2.7	4.2	64%	4.1	98%
Beaver Head	SNOTEL	8076	10	2.5	2.6	96%	2.5	96%
Buck Spring	SC	7400			1.2			
Coronado Trail	SC	8350			2.2		1.3	59%
Coronado Trail	SNOTEL	8418	10	2.5	2.2	114%	2.7	123%
Fort Apache	SC	9160			4.6		4.0	87%
Hannagan Meadows	SNOTEL	9027	17	4.2	5.2	81%	5.1	98%
Hawley Lake	SNOTEL	8314	25	5.8			7.2	
Heber	SNOTEL	7654	13	2.7	3.8	71%	5.8	153%
Maverick Fork	SNOTEL	9220	8	2.0	5.2	38%	2.8	54%
Promontory	SNOTEL	7942	11	2.3	6.4	36%	7.5	117%
Wildcat	SNOTEL	7868	12	2.6	1.8	144%	3.0	167%
Workman Creek	SNOTEL	7032	8	2.1	3.2	66%	5.1	159%
Basin Index						68%		112%
# of sites							9	9

Central Mogollon Rim	Network	Elevation (ft)	Depth (in)	SWE (in)	Median (in)	% Median	Last Year SWE (in)	Last Year % Median
Baker Butte	SNOTEL	7363	7	1.7	2.8	61%	5.0	179%
Baker Butte No. 2	SC	7700			5.6			
Baker Butte Smt	SNOTEL	7752	14	3.5	6.1	57%	10.6	174%
Happy Jack	SC	7630			2.0		4.1	205%
Happy Jack	SNOTEL	7539	8	1.5	3.3	45%	7.0	212%
Heber	SNOTEL	7654	13	2.7	3.8	71%	5.8	153%
Promontory	SNOTEL	7942	11	2.3	6.4	36%	7.5	117%
Workman Creek	SNOTEL	7032	8	2.1	3.2	66%	5.1	159%
Basin Index						54%		160%
# of sites						6		6

Upper Salt	Network	Elevation (ft)	Depth (in)	SWE (in)	Median (in)	% Median	Last Year SWE (in)	Last Year % Median
Baldy	SNOTEL	9221	14	2.7	4.2	64%	4.1	98%
Beaver Head	SNOTEL	8076	10	2.5	2.6	96%	2.5	96%
Buck Spring	SC	7400			1.2			
Coronado Trail	SC	8350			2.2		1.3	59%
Coronado Trail	SNOTEL	8418	10	2.5	2.2	114%	2.7	123%
Fort Apache	SC	9160			4.6		4.0	87%
Hannagan Meadows	SNOTEL	9027	17	4.2	5.2	81%	5.1	98%
Hawley Lake	SNOTEL	8314	25	5.8			7.2	
Maverick Fork	SNOTEL	9220	8	2.0	5.2	38%	2.8	54%
Wildcat	SNOTEL	7868	12	2.6	1.8	144%	3.0	167%
Basin Index						78%		95%
# of sites						6		6

Verde	Network	Elevation (ft)	Depth (in)	SWE (in)	Median (in)	% Median	Last Year SWE (in)	Last Year % Median
Baker Butte	SNOTEL	7363	7	1.7	2.8	61%	5.0	179%
Baker Butte No. 2	SC	7700			5.6			
Baker Butte Smt	SNOTEL	7752	14	3.5	6.1	57%	10.6	174%
Bar M	SNOTEL	6397	4	1.6			4.6	
Chalender	SC	7100			1.0		2.2	220%
Chalender	SNOTEL	7035	6	1.0	2.7	37%	4.6	170%
Fort Valley	SNOTEL	7371	3	1.0	1.4	71%	4.2	300%
Fort Valley	SC	7350			1.4		2.5	179%
Fry	SNOTEL	7236	9	1.7	4.0	43%	8.3	208%
Happy Jack	SC	7630			2.0		4.1	205%
Happy Jack	SNOTEL	7539	8	1.5	3.3	45%	7.0	212%
Mormon Mountain	SNOTEL	7500	7	1.9	3.0	63%	7.8	260%
Mormon Mountain Summit #2	SC	8470			5.6			
Mormon Mtn Summit	SNOTEL	8462	11	2.4	5.8	41%	7.1	122%
Newman Park	SC	6750			1.4		2.8	200%
Snow Bowl #2	SC	11200			8.4		10.4	124%
White Horse Lake	SNOTEL	7203	6	1.1	1.6	69%	5.7	356%
Williams Ski Run	SC	7720			3.5			
Basin Index						51%		196%
# of sites						9		9

Upper Verde	Network	Elevation (ft)	Depth (in)	SWE (in)	Median (in)	% Median	Last Year SWE (in)	Last Year % Median
Bar M	SNOTEL	6397	4	1.6			4.6	
Chalender	SNOTEL	7035	6	1.0	2.7	37%	4.6	170%
Chalender	SC	7100			1.0		2.2	220%
Fort Valley	SNOTEL	7371	3	1.0	1.4	71%	4.2	300%
Fort Valley	SC	7350			1.4		2.5	179%
Fry	SNOTEL	7236	9	1.7	4.0	43%	8.3	208%
Happy Jack	SC	7630			2.0		4.1	205%

Basin Index							49%	130%	
# of sites							2	2	
Little Colorado Headwaters	Network	Elevation (ft)	Depth (in)	SWE (in)	Median (in)	% Median	Last Year SWE (in)	Last Year % Median	
Baldy	SNOTEL	9221	14	2.7	4.2	64%	4.1	98%	
Cheese Springs	SC	8700			3.1		2.0	65%	
Fort Apache	SC	9160			4.6		4.0	87%	
Maverick Fork	SNOTEL	9220	8	2.0	5.2	38%	2.8	54%	
Nutrioso	SC	8500			1.0		0.6	60%	
Nutrioso	SNOTEL	8571	4	1.7	0.5	340%	0.5	100%	
Basin Index							65%	75%	
# of sites							3	3	
Zuni	Network	Elevation (ft)	Depth (in)	SWE (in)	Median (in)	% Median	Last Year SWE (in)	Last Year % Median	
Boon	SC	8140							
Dan Valley	SC	7640							
McGaffey	SC	8120							
Basin Index									
# of sites							0	0	
Lower Colorado Mainstem	Network	Elevation (ft)	Depth (in)	SWE (in)	Median (in)	% Median	Last Year SWE (in)	Last Year % Median	
Bright Angel	SC	8400			4.4		7.8	177%	
Chalender	SNOTEL	7035	6	1.0	2.7	37%	4.6	170%	
Chalender	SC	7100			1.0		2.2	220%	
Gardner Peak	SNOTEL	8322	13	3.5	5.0	70%	9.6	192%	
Grand Canyon	SC	7500			1.3		2.4	185%	
Gutz Peak	SNOTEL	6763	5	1.2	5.1	24%	11.8	231%	
Harris Flat	SNOTEL	7792	8	1.6	3.8	42%	10.0	263%	
Kolob	SNOTEL	9263	22	4.7	9.8	48%	21.7	221%	
Little Grassy	SNOTEL	6065	3	0.7	2.4	29%	3.5	146%	
Long Flat	SNOTEL	7982	8	1.5	3.5	43%	7.4	211%	
Long Valley Jct	SNOTEL	7465	2	0.6	2.6	23%	8.8	338%	
Midway Valley	SNOTEL	9827	34	6.8	10.6	64%	23.3	220%	
Webster Flat	SNOTEL	9203	20	4.7	6.2	76%	14.5	234%	
Williams Ski Run	SC	7720			3.5				
Basin Index							51%	223%	
# of sites							10	10	
Grand Canyon	Network	Elevation (ft)	Depth (in)	SWE (in)	Median (in)	% Median	Last Year SWE (in)	Last Year % Median	
Bright Angel	SC	8400			4.4		7.8	177%	
Grand Canyon	SC	7500			1.3		2.4	185%	
Basin Index									
# of sites							0	0	
Virgin	Network	Elevation (ft)	Depth (in)	SWE (in)	Median (in)	% Median	Last Year SWE (in)	Last Year % Median	
Gardner Peak	SNOTEL	8322	13	3.5	5.0	70%	9.6	192%	
Gutz Peak	SNOTEL	6763	5	1.2	5.1	24%	11.8	231%	
Harris Flat	SNOTEL	7792	8	1.6	3.8	42%	10.0	263%	
Kolob	SNOTEL	9263	22	4.7	9.8	48%	21.7	221%	
Little Grassy	SNOTEL	6065	3	0.7	2.4	29%	3.5	146%	
Long Flat	SNOTEL	7982	8	1.5	3.5	43%	7.4	211%	
Long Valley Jct	SNOTEL	7465	2	0.6	2.6	23%	8.8	338%	
Midway Valley	SNOTEL	9827	34	6.8	10.6	64%	23.3	220%	
Webster Flat	SNOTEL	9203	20	4.7	6.2	76%	14.5	234%	
Basin Index							52%	226%	

Upper Colorado	Network	Elevation (ft)	Depth (in)	SWE (in)	Median (in)	% Median	Last Year SWE (in)	Last Year % Median
Agua Canyon	SNOTEL	8900	5	1.1	4.5	24%	8.4	187%
Arapaho Ridge	SNOTEL	10976	51	10.5	11.4	92%	14.2	125%
Arrow #2	SC	9668						
Battle Mountain	SNOTEL	7498	23	3.9	5.6	70%	10.3	184%
Bear River	SNOTEL	9112	31	5.7	5.8	98%	6.5	112%
Beartown	SNOTEL	11600	45	8.1	11.2	72%	12.8	114%
Beaver Ck Village	SNOTEL	8565	29	5.4	6.4	84%	7.9	123%
Beaver Spring	SNOTEL	9255	31	7.2	5.3	136%	8.2	155%
Beaver Spring	SC	9220			4.4			
Berthoud Pass	SC	9700						
Berthoud Summit	SNOTEL	11314	56	10.2	8.8	116%	10.1	115%
Big Park	SC	8620						
Big Sandy Opening	SNOTEL	9080	29	5.7	7.0	81%	8.9	127%
Bison Lake	SNOTEL	10964	46	10.3	12.0	86%	21.2	177%
Black Flat-U.M. Ck	SNOTEL	9414	20	4.3	4.0	108%	9.0	225%
Black Mesa	SNOTEL	11564	36	8.0			15.9	
Blacks Fork Jct	SNOTEL	8869	25	5.6	3.8	147%	8.0	211%
Blind Bull Sum	SNOTEL	8650	45	9.1	12.4	73%	12.6	102%
Blue River	SC	10500						
Bowl Canyon	SC	8980			4.0		26.0	650%
Brown Duck	SNOTEL	10574	34	6.3	8.2	77%	13.9	170%
Bryce Canyon	SC	8000						
Buck Flat	SNOTEL	9409	34	7.5	8.0	94%	15.2	190%
Buck Pasture	SNOTEL	9632	42	7.4			11.0	
Buckboard Flat	SNOTEL	8924	23	5.2			9.8	
Buckboard Flat	SC	8998						
Buffalo Park	SNOTEL	9249	44	7.0	6.8	103%	8.1	119%
Burro Mountain	SNOTEL	9317	31	6.0	7.9	76%	11.4	144%
Butte	SNOTEL	10200	47	8.8	6.8	129%	9.6	141%
Butterhill	SC	7880						
Camp Jackson	SNOTEL	8858	20	4.7	5.9	80%	11.1	188%
Cascade #2	SNOTEL	9012	26	5.2	5.7	91%	8.1	142%
Chapman Tunnel	SNOTEL	10100	45	8.2	7.5	109%	7.9	105%
Chepeta	SNOTEL	10499	16	3.7	6.6	56%	10.4	158%
Clayton Springs	SNOTEL	10049	19	3.5	5.4	65%	10.4	193%
Clear Creek #1	SNOTEL	8975	41	7.2	7.9	91%	17.6	223%
Cochetopa Pass	SC	10000						
Cochetopa Pass	SNOTEL	10061	14	2.2	2.6	85%	2.6	100%
Columbine	SNOTEL	9167	63	12.0	11.8	102%	15.4	131%
Columbine Lodge	SC	9160						
Columbine Pass	SNOTEL	9171	35	7.8	8.3	94%	22.0	265%
Columbus Basin	SNOTEL	10781	40	8.3	11.9	70%	13.5	113%
Copper Mountain	SNOTEL	10523	40	6.9	7.3	95%	8.2	112%
Corral	SNOTEL	8207	12	2.9			11.2	
Corral Creek	SC	9700						
Cottonwood Pass	SNOLITE	11681	41					
Crested Butte	SC	8920						
Croscho	SNOTEL	8973	44	7.0	6.5	108%	8.6	132%
Currant Creek	SNOTEL	7915	33	6.6	4.6	143%	12.1	263%
Daniels-Strawberry	SNOTEL	8008	41	7.8	6.8	115%	15.1	222%
Dills Camp	SNOTEL	9228	22	5.3	5.4	98%	12.4	230%
Divide Peak	SNOTEL	8730	38	7.5	9.8	77%	13.4	137%
Donkey Reservoir	SNOTEL	9799	16	2.5	3.6	69%	5.6	156%
Dry Lake	SNOTEL	8271	58	11.8	10.5	112%	19.3	184%
EF Blacks Fork GS	SNOTEL	9360	25	3.6	4.4	82%	9.3	211%
East Rim Divide	SNOTEL	7930	19	3.2	5.5	58%	6.2	113%
East Willow Creek	SNOTEL	8302	17	2.3	3.9	59%	9.1	233%

El Diente Peak	SNOTEL	10217	35	6.4	6.2	103%	10.2	165%
Elk River	SNOTEL	8739	41	8.4	8.6	98%	15.9	185%
Elkhart Park G.S.	SNOTEL	9400	24	4.5	6.6	68%	7.2	109%
Elkhead Divide	SNOTEL	8800	49	9.6			17.9	
Elliot Ridge	SNOTEL	10549	42	10.7	8.7	123%	16.2	186%
Fish Lake	SC	8818						
Fish Lake Utah	SNOTEL	8798	20	4.6	4.8	96%	6.8	142%
Five Points Lake	SNOTEL	10943	25	5.8	8.0	73%	13.6	170%
Fluted Rock	SC	7800			1.6		3.0	188%
Fool Creek	SNOTEL	11156	52	9.8			9.9	
Fremont Pass	SNOTEL	11326	40	6.6	8.2	80%	7.6	93%
G.B.R.C. Meadows	SC	9780						
GBRC Meadows	SNOTEL	9858	36	9.1			17.2	
Gold Basin	SNOTEL	10076	36	7.6			17.5	
Gore Pass	SC	9400						
Granby	SC	8600						
Grizzly Peak	SNOTEL	11139	48	7.5	8.4	89%	9.4	112%
Gros Ventre Summit	SNOTEL	8750	25	3.9	7.2	54%	7.4	103%
Groundhog	SC	8940						
Gunsight Pass	SNOTEL	9820	27	5.2	7.0	74%	7.5	107%
Hagerman Tunnel	SC	11150						
Hams Fork	SNOTEL	7840	23	3.0	5.6	54%	8.8	157%
Haskins Creek	SC	8975						
Henrys Fork	SNOLITE	10182	24					
Hewinta	SNOTEL	9500	32	4.9	4.8	102%	6.8	142%
Hickerson Park	SNOTEL	9122	27	4.1	3.3	124%	5.3	161%
Hidden Valley	SC	8480			3.0			
High Lonesome	SNOTEL	10638	55	10.0			11.6	
Hole-in-Rock	SNOTEL	9168	21	3.5	3.6	97%	5.1	142%
Huntington Horse	SNOTEL	9652	56	12.7			23.7	
Huntington-Horseshoe	SC	9657						
Idarado	SNOTEL	9812	34	5.5	6.4	86%	7.6	119%
Independence Pass	SC	10600						
Independence Pass	SNOTEL	10598	42	7.0	8.4	83%	8.4	100%
Indian Creek	SNOTEL	9425	49	9.5	11.7	81%	15.6	133%
Ironton Park	SC	9600						
Ivanhoe	SNOTEL	10541	50	9.5	7.2	132%	9.3	129%
Jones Pass	SNOTEL	10426	45	7.4	7.9	94%	8.2	104%
Jones Pass	SC	10400						
Kelley R.S.	SNOTEL	8180	36	7.1	7.2	99%	11.5	160%
Kendall R.S.	SNOTEL	7740	18	3.1	6.6	47%	6.7	102%
Keystone	SC	9960						
Kiln	SNOTEL	9624		6.8	6.2	110%	6.8	110%
Kings Cabin	SNOTEL	8728	14	2.6	4.2	62%	11.0	262%
Lake City	SC	10160						
Lake Irene	SC	10700						
Lake Irene	SNOTEL	10682	53	9.6	11.7	82%	14.4	123%
Lakefork #1	SNOTEL	10128	19	4.1	6.2	66%	10.2	165%
Lakefork #3	SNOTEL	8464	11	2.1	3.4	62%	7.8	229%
Lakefork Basin	SNOTEL	10885	38	7.5	9.3	81%	16.3	175%
Lapland	SC	9300						
Larsen Creek	SC	9020						
Larsen Creek	SNOTEL	9000	11	3.0	4.0	75%	6.2	155%
Lasal Mountain	SNOTEL	9578	27	5.5	5.6	98%	12.1	216%
Lasal Mountain-Lower	SC	8825						
Lasal Mountain-Lower	SNOTEL	8783	21	4.8			9.7	
Lemon Reservoir	SC	8700						
Little Snake River	SNOTEL	8928		12.4	13.4	93%	20.4	152%
Lizard Head Pass	SNOTEL	10193	36	6.7	7.6	88%	10.3	136%
Lone Cone	SNOTEL	9755	32	6.6	7.8	85%	11.6	149%
Lonesome Beaver	SNOTEL	9410	4	1.2			4.6	

Loomis Park	SNOTEL	8240	30	5.4	7.9	68%	8.5	108%
Lost Dog	SNOTEL	9327	43	9.7	10.6	92%	18.0	170%
Lostman	SC	10626						
Lynx Pass	SNOTEL	8919		5.6	5.6	100%	7.7	138%
Mammoth-Cottonwood	SNOTEL	8709	46	10.4	8.8	118%	20.2	230%
Mancos	SNOTEL	10044		6.7	7.8	86%	10.2	131%
Mc Clure Pass	SNOTEL	8774		6.7	8.2	82%	13.7	167%
Mc Kenzie Gulch	SC	8500						
Mccoy Park	SNOTEL	9516		6.8	7.3	93%	9.0	123%
Mesa Lakes	SC	10000						
Mesa Lakes	SNOTEL	10168		6.7	8.2	82%	11.3	138%
Middle Fork Camp	SNOTEL	8969	40	6.2	5.9	105%	6.6	112%
Middle Fork Campground	SC	9000						
Milner Pass	SC	9750						
Mineral Creek	SNOTEL	10046	33	5.8	7.2	81%	9.1	126%
Missionary Spring	SC	7940			2.1		4.3	205%
Molas Lake	SNOTEL	10631	38	6.2	8.6	72%	11.2	130%
Monarch Offshoot	SC	10500						
Mosby Mtn.	SNOTEL	9553	17	2.6	5.4	48%	11.9	220%
Mt Baldy	SNOTEL	9524	46	10.7			22.4	
Mt Pennell	SNOTEL	9209	14	2.7			6.8	
Nast Lake	SC	8700						
Nast Lake	SNOTEL	8731		6.0	4.1	146%	6.0	146%
Navajo Whiskey Ck	SNOTEL	9064	28	6.5	4.6	141%	9.1	198%
New Fork Lake	SNOTEL	8340	19	3.7	5.7	65%	6.4	112%
North Inlet Grand Lake	SC	9000						
North Lost Trail	SNOTEL	9219		8.4	7.2	117%	12.5	174%
Old Battle	SNOTEL	9860	62	12.7	15.6	81%	21.1	135%
Overland Res.	SNOTEL	9893	26	4.8	5.8	83%	10.9	188%
Park Cone	SNOTEL	9621	38	6.7	4.8	140%	7.7	160%
Park Cone	SC	9600						
Park Reservoir	SNOTEL	9987	44	9.5	12.0	79%	22.1	184%
Phantom Valley	SNOTEL	9045	24	4.0	5.2	77%	6.8	131%
Pocket Creek	SC	9350						
Pocket Creek	SNOTEL	9360						
Porphyry Creek	SC	10760						
Porphyry Creek	SNOTEL	10788	54	9.6	7.2	133%	10.0	139%
Rabbit Ears	SNOTEL	9411	60	12.6	11.6	109%	17.6	152%
Ranch Creek	SC	9400						
Red Mountain Pass	SNOTEL	11080	49	9.7	11.0	88%	13.7	125%
Red Pine Ridge	SNOTEL	8988	35	7.0	5.8	121%	12.6	217%
Rio Blanco	SC	8500						
Ripple Creek	SNOTEL	10350	67	12.2	12.8	95%	19.9	155%
Rock Creek	SNOTEL	7886	16	3.0	3.8	79%	7.9	208%
Rowdy Creek	SC	8300						
Sage Creek Basin	SNOTEL	7850	29	4.7	6.9	68%	11.7	170%
Sandstone RS	SNOTEL	8152		7.7	6.7	115%	13.6	203%
Sargents Mesa	SNOTEL	11499	24	4.3	5.4	80%	5.8	107%
Schofield Pass	SNOTEL	10653	63	13.4	14.7	91%	21.7	148%
Scotch Creek	SNOTEL	9195	29	5.4	5.6	96%	9.5	170%
Seeley Creek	SNOTEL	9904	26	5.0	5.8	86%	13.8	238%
Sharkstooth	SNOTEL	10747	35	6.8	7.5	91%	12.3	164%
Shrine Pass	SC	10700						
Slumgullion	SNOTEL	11560	29	5.8	7.4	78%	6.3	85%
Snake River	SC	10000						
Snider Basin	SNOTEL	8060	24	4.0	6.4	63%	7.4	116%
Spirit Lk	SNOTEL	10235	21	4.2	5.8	72%	10.8	186%
Spring Creek Divide	SNOTEL	9000	53	9.9	12.3	80%	13.9	113%
Spud Mountain	SNOTEL	10674	48	8.8	11.5	77%	16.4	143%
Steel Creek Park	SNOTEL	10158	31	7.0	7.0	100%	11.2	160%
Stillwater Creek	SNOTEL	8880	22	4.1			5.5	

Strawberry Divide	SNOTEL	8123	48	10.2	7.5	136%	13.9	185%
Stump Lakes	SNOTEL	11248	41	8.6	9.0	96%	12.2	136%
Summit Ranch	SNOTEL	9371	27	4.9	5.6	88%	6.7	120%
Sunflower Flat	SNOTEL	10018	2	0.6			9.9	
Telluride	SC	8800						
Tennessee Pass #2	SC	10280						
Timberline	SNOTEL	8736	16	3.0	3.9	77%	12.9	331%
Tower	SNOTEL	10620	83	19.7	21.0	94%	29.1	139%
Trapper Lake	SNOTEL	9759	41	7.9			4.3	
Trial Lake	SNOTEL	9992	61	9.3	10.0	93%	19.2	192%
Trial Lake	SC	9953						
Triple Peak	SNOTEL	8500	47	9.3	11.4	82%	13.6	119%
Trout Creek	SNOTEL	9518	14	2.7	3.8	71%	8.6	226%
Trout Lake #2	SC	9780						
Tsaile Canyon #1	SC	8160			3.2			
Tsaile Canyon #3	SC	8920			5.3			
Upper Joes Valley	SNOTEL	8596	25	4.7			9.8	
Upper San Juan	SNOTEL	10140	54	10.8	13.0	83%	18.7	144%
Upper San Juan	SC	10200						
Upper Taylor	SNOTEL	10717	34	6.9	6.4	108%	10.2	159%
Vail Mountain	SNOTEL	10310	49	10.8	9.0	120%	11.4	127%
Vallecito	SNOTEL	10782	38	7.7	7.4	104%	10.6	143%
Vasquez	SC	9600						
Wager Gulch	SNOTEL	11132	21	4.2			4.9	
Weminuche Creek	SNOTEL	10749	42	8.6	8.8	98%	11.5	131%
Whiskey Creek	SC	9050			4.6			
Whiskey Park	SNOTEL	9020		13.7	12.8	107%	21.4	167%
White River #1	SNOTEL	8641	41	7.8	5.1	153%	11.2	220%
Widtsoe #3	SNOTEL	9640	14	3.1	4.9	63%	10.3	210%
Wilbur Bench	SNOTEL	9171	26	4.9	4.9	100%	10.7	218%
Willow Creek Pass	SC	9540						
Willow Creek Pass	SNOTEL	9523	35	6.9	6.8	101%	9.4	138%
Wolf Creek Peak	SNOTEL	9796	41	7.5			19.6	
Wolf Creek Summit	SNOTEL	10957	55	11.7	16.3	72%	19.5	120%
Wrigley Creek	SNOTEL	9327	18	3.7			10.0	
Wurtz Lower	SC	10690						
Yampa View	SC	8200						

Basin Index						90%		152%
# of sites						130		130

Chuska - Defiance	Network	Elevation (ft)	Depth (in)	SWE (in)	Median (in)	% Median	Last Year SWE (in)	Last Year % Median
Beaver Spring	SNOTEL	9255	31	7.2	5.3	136%	8.2	155%
Beaver Spring	SC	9220			4.4			
Bowl Canyon	SC	8980			4.0		26.0	650%
Fluted Rock	SC	7800			1.6		3.0	188%
Hidden Valley	SC	8480			3.0			
Missionary Spring	SC	7940			2.1		4.3	205%
Navajo Whiskey Ck	SNOTEL	9064	28	6.5	4.6	141%	9.1	198%
Tsaile Canyon #1	SC	8160			3.2			
Tsaile Canyon #3	SC	8920			5.3			
Whiskey Creek	SC	9050			4.6			

Basin Index						138%		175%
# of sites						2		2