

## 7/21/22 State Technical Advisory Committee Meeting

### Attendees:

Bartlett, Vanessa - NRCS, Madison, WI  
Gerlich, Ryan - NRCS, Madison, WI  
Dick Hauser (Guest)  
Kevin A Erb  
Hurley, Eric - NRCS, Madison, WI  
Jeff Mears  
Vander Wilt, Jeffrey - NRCS, Huron, SD  
Gundlach, David - NRCS, Madison, WI  
Jeff Hastings  
Heagle, Erik - NRCS, Lancaster, WI  
Michael F. Troge  
Cynthia Jetzer  
Fallat, Coreen R - DATCP  
Allness, Eric - NRCS, Madison, WI  
Schriefer, Eugene - FPAC-FSA, Madison, WI  
Raeder, Tyler - NRCS, Madison, WI  
Bartz, Melissa - NRCS, Madison, WI  
Krauss, Ian - FSA, Madison, WI  
Williams, Meridith - NRCS, Madison, WI  
Linnea Rowse (Guest)  
Weber, Patrick - NRCS, Rhinelander, WI  
Johnson, Abigale (CTR) - FPAC-NRCS, MADISON, WI  
Schultheis, Kristin  
Brown, Sadie A - DNR  
Braun, Allan J - NRCS, Madison, WI  
Brian Glenzinski  
Marty Moses  
White, John - NRCS, Madison, WI  
Tyler Wenzlaff  
Steve Richter  
Loeffelholz, Brian C - DATCP  
Craig Ficenec (Guest)  
Francisco Arriaga  
Bertjens, Steve - NRCS, Madison, WI  
Tom Lochner  
Paolucci, Andrew - NRCS - Madison, WI

Intro & welcome: Jeff Vander Wilt. Acting State Conservationist  
Introduction to Sarah Straussman by Jeff Hastings

Eric Allness: Grants and Agreements – Overview of proposed funding opportunities.

Melissa Bartz: Program Updates, LWG Results & CIG Awards. See slides. **Conservation Innovation Grants**

-

Wisconsin set aside \$500,000 of our state EQIP allocation to hold a state CIG sign-up. Purpose of CIG is to stimulate the development and adoption of innovative conservation approaches and technologies in conjunction with agricultural production. CIG projects are expected to lead to the transfer of conservation technologies, management systems, and innovative approaches to agricultural producers, into government technical manuals and guides, or to the private sector.

The State CIG NFO was posted in February and the deadline to submit was April 5th.

Wisconsin made 2 awards for the 2022 cycle and are working on the agreements with the awardees -

Sand County Foundation, Heidi Peterson and Tricia Verville \$257,930

Summary: Sand County Foundation will incentivize conservation practice adoption based on environmental responses to a conservation-system practice implementation model instead of a flat-rate payment based on activity and amount implemented. This approach requires more planning up-front to understand each farmer's goals. The farmers are provided with options supported by modeling data, so they can shift their management with more assurance knowing that the practice adopted is resulting in the greatest environmental improvement. Scenarios will be modeled using SnapPlus, STEPL, and COMET-Planner to quantify environmental benefits. At least 20 farmers, prioritizing HU and late adopters, will be targeted with a goal of 20,000 acres receiving individualized nutrient management and practice implementation options that fit their production goals. Deliverables will include at least 3 field days reaching 225 farmers, 3 case study publications including 1 video, and climate smart management adopted across more than 2,000 row crop acres. Location is the mid-upper WI River and Great Lakes watersheds.

Michael Fields Ag Institute & Racine County Producer Group, Dr. Jim Stude \$155,052.89

Summary: This project targets farmers not yet implementing soil health conservation practices by determining economic and environmental benefits of climate smart management system (CSMS). What makes this unique is it specifically studies farmers who lease land and cannot manage based on long-term rental expectations. By studying what happens during early Soil Health adoption to soil health matrixes, crop yield and looking at production costs on leased land, the applicant will look for positive soil health and economic results that will help conservationists sell conservation to late adopters. The site will be the Racine County farm and use paired trials to gather data.

National CIG - we are expecting a national CIG announcement for both Classic and on-Farm Trials yet this fiscal year.

## **RCPP**

RCPP - expecting to hear announcement of funded awards in late summer.

RCPP Renewals - 4 eligible projects have been notified of the opportunity to renew.

American Bird Conservancy: Linnea Rowse/Pat Weber. See slides.

Subcommittees:

Forestry: Efforts to regenerate forests. Allan Braun

Soil Health: Andy Paolucci

Wildlife: Steve Bertjens

Source Water Protection: Eric Hurley. See slides.  
Urban & Community Agriculture: Eric Allness

Partner Reports:

FSA-Ian Krauss

DATCP-Coreen Fallat

Glacierland-Mike Troge

Grant County Sanitation & Zoning: Eric Heagle



# Improving Forest Health for Wildlife Resources

in Minnesota, Wisconsin, Michigan

July 21, 2022



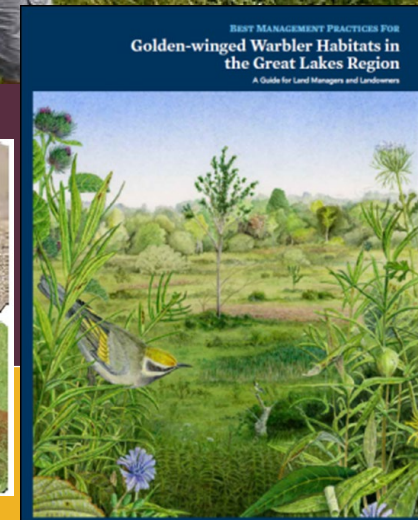
# RCPP - Overview

## Improving Forest Health for Wildlife: 2014 – 2020 and Renewal: 2021-2026

Comprehensive regional initiative to create high-quality breeding habitat using science-based BMPs

Provide Technical (TA) and Financial Assistance to Private Landowners to:

- Non-commercial shearing in shrub wetlands (tag alder) and uplands (wildlife openings)
- Managing mixed-hardwoods for diversity of age classes
  - Upland habitat management
  - Seed tree harvest, shelterwood harvest, forest patch openings
- Jack pine management



# RCPP – Accomplishments

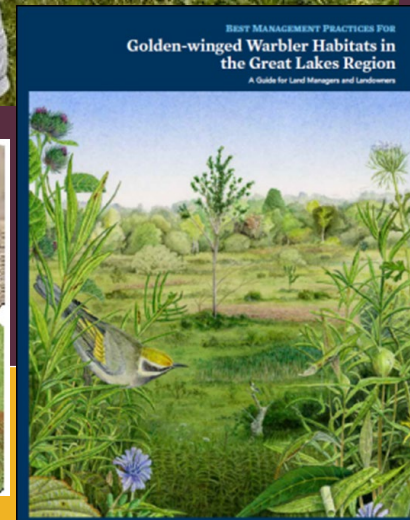


## USDA - NRCS

## Regional Conservation Partnership Program

### 2014 – 2020 Accomplishments

1. 6,772ac of GWWA habitat using BMPs on private lands
2. Research shows that it's working!
  - GWWA density doubled at treatment sites; breeding birds detected on 90% of sites within 3 yrs
  - Increase in AMWO abundance locally
3. Outreach / Education
  - 675+ site visits; helped 498+ LO's apply for cost-share

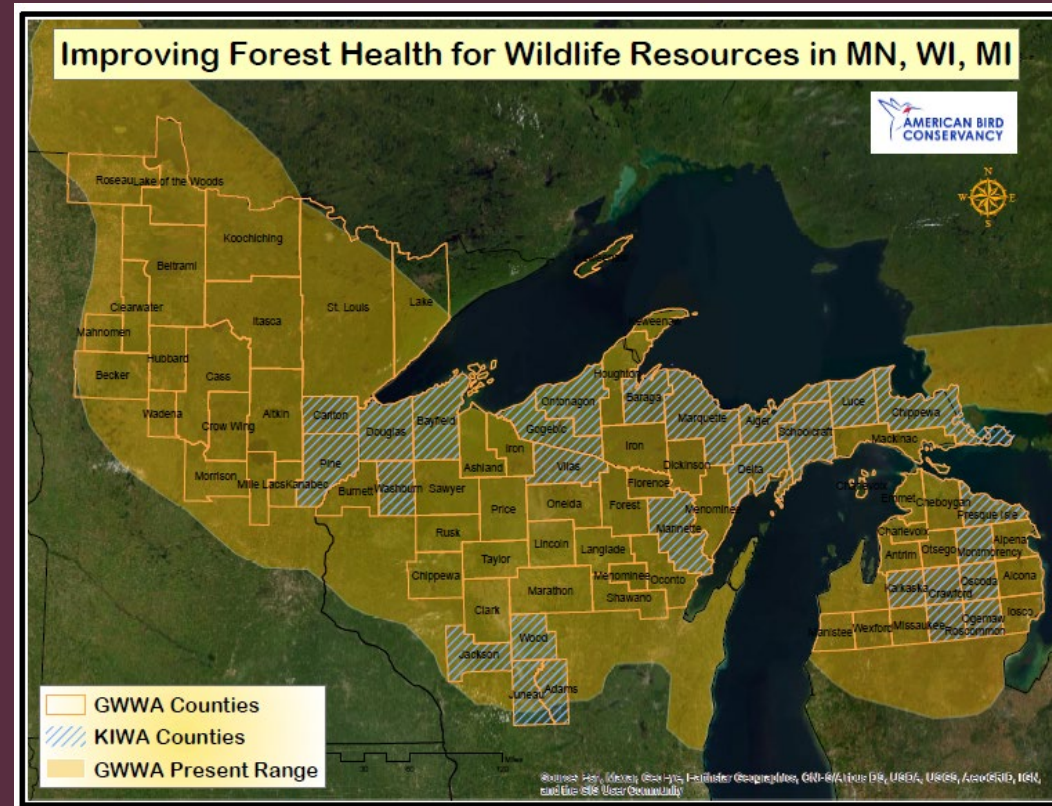


# RCPPII: 2021-2026

## Regional Conservation Partnership Program: 2021 - 2026

### 2021 – 2026 Goals

- 6,670 additional acres of ESH using GWWA and KIWA BMPs
  - To date: 623ac created
- RCPPII investment of \$5 million matched by \$7.6 million in partner contributions over five years
- Lasting positive impact on biodiversity in the GL region



# RCP2 II: 2021-2026

## Golden-winged Warbler

- Young forest management
- Deciduous forested landscape
- Habitat also benefits American Woodcock, Ruffed Grouse, Eastern Whip-poor-will (and others!)

### The need:

- Steep population decline
  - 26% reduction from 1966 – 2010
- Decline due to habitat loss and land-use change





# RCPPII: 2021-2026

## Kirtland's Warbler

- Young jack pine management
- Large tracts
- Habitat also benefits spruce grouse

The need:

- Delisted in 2019
- Recovery → Conservation
- Expanding the breeding range

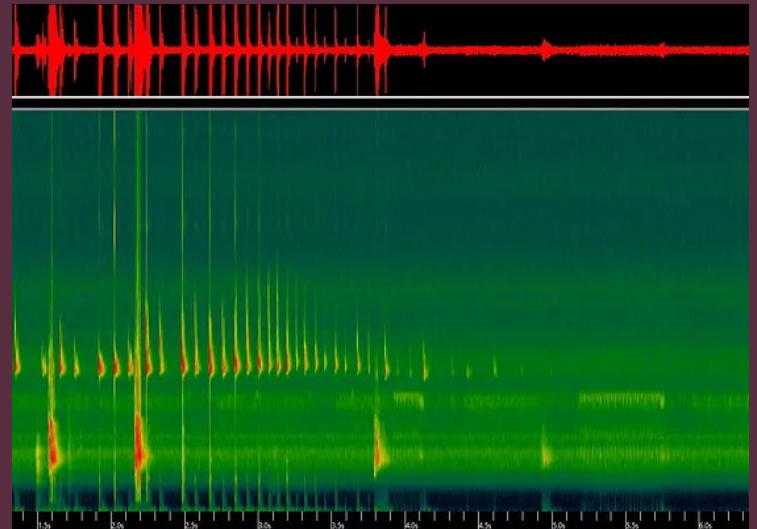


# RCPP II: 2021-2026

## Regional Conservation Partnership Program: 2021 - 2026

### Bioacoustics monitoring

- Innovative technology
- Expand coverage and reduce costs of monitoring



# Partnerships Lead to New Opportunities



- Kirtland's Warbler
- Black Ash Pilot Project
- Sustain our Great Lakes
- Oak Ecosystem RCPP
- MN Forest Habitat Collaborative
- WI Young Forest Partnership
- Forestry for Michigan Birds
- SFI / ABC / BAM X-Border Initiative
- And others!



A Forest Owner's Guide to  
**Forestry for  
Michigan Birds**



A Forest Manager's Guide to  
**Forestry for  
Michigan Birds**





United States Department of Agriculture

USDA is an equal opportunity provider, employer, and lender.



# NRCS Source Water Protection Committee

July 18, 2022

Eric G. Hurley, State Resource  
Conservationist



Natural  
Resources  
Conservation  
Service

[nrcs.usda.gov/](https://nrcs.usda.gov/)



## Purpose of Meeting

- **Determine priority areas for NRCS financial assistance dollars for FY23**
- **Begin discussion about drinking water source protection for FY24 and beyond (new Farm Bill)**
  - Watersheds
  - Ground versus surface water
  - Water quality and/or quantity
  - Pollutant(s)
  - Conservation practices

**[Reminder: 2018 Farm Bill dedicates 10% of funds to drinking water source protection]**

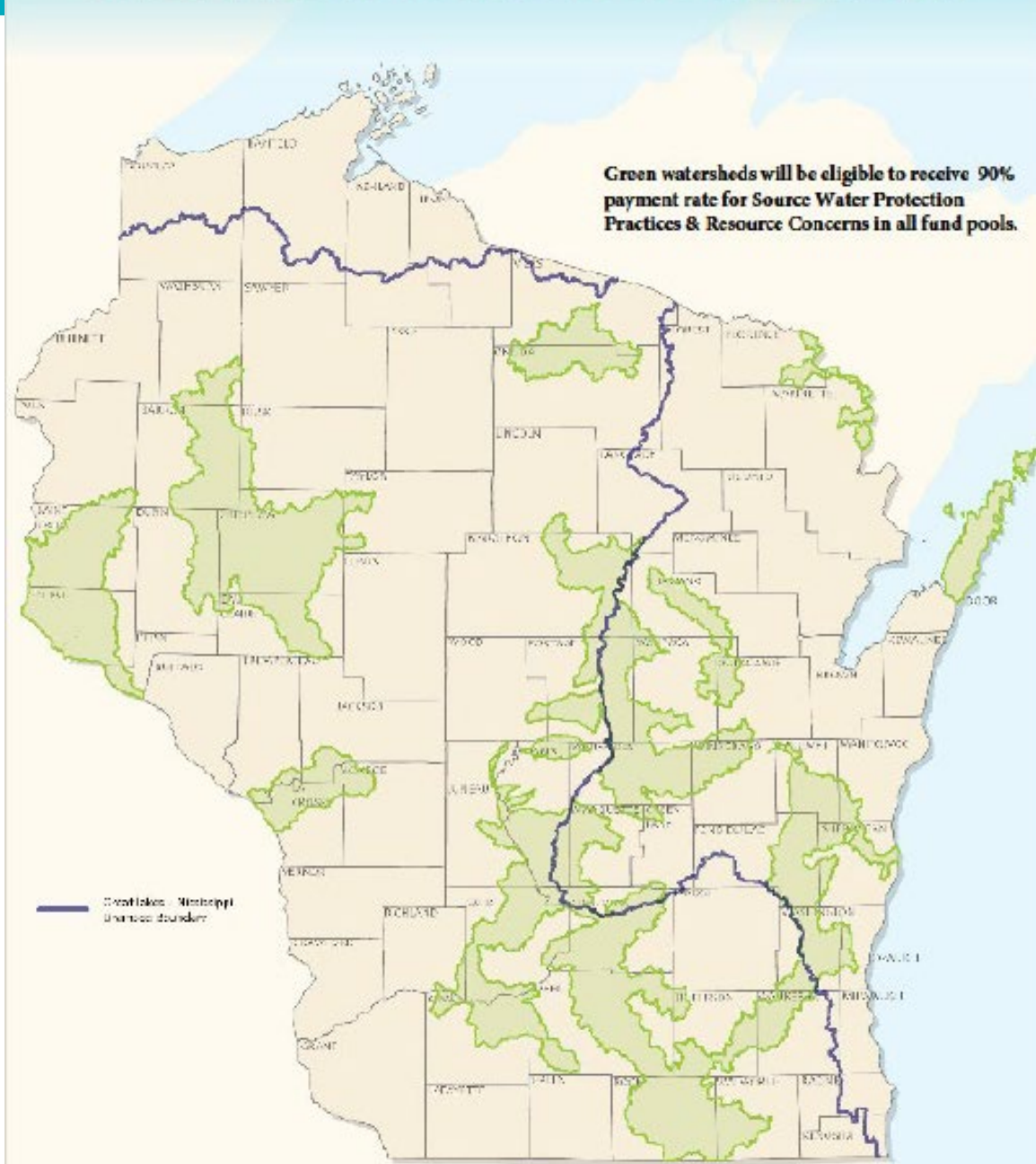


Natural  
Resources  
Conservation  
Service

[nrcs.usda.gov/](https://nrcs.usda.gov/)

- **Current Priorities**

- Watersheds
- Ground water
- Water quality
- Nitrate-N



# FY22 Source Water



- **\$2.8 million in applications**
- **51 applications were funded in the Source Water Fund Pool**
- **9,773 acres**

- Barron (5)
- Chippewa (3)
- Columbia (7)
- Dane (13)
- Dunn (2)
- Jefferson (1)
- La Crosse (1)
- Marathon (1)
- Portage (3)
- Rock (4)
- Sauk (5)
- St. Croix (1)
- Walworth (2)
- Waupaca (2)

# Top Practices in FY22 Source Fund Pool

- **Cover Crop (340)**
- **Waste Facility Closure (360)**
- **Mulching (484)**
- **Waste Transfer (634)**
- **Critical Area Planting (342)**
- **Prescribed Grazing (528)**
- **Fence (382)**
- **Heavy Use Area Protection (561)**
- **Livestock Pipeline (516)**
- **Pumping Plant (533)**



Natural  
Resources  
Conservation  
Service

[nrcs.usda.gov/](https://nrcs.usda.gov/)

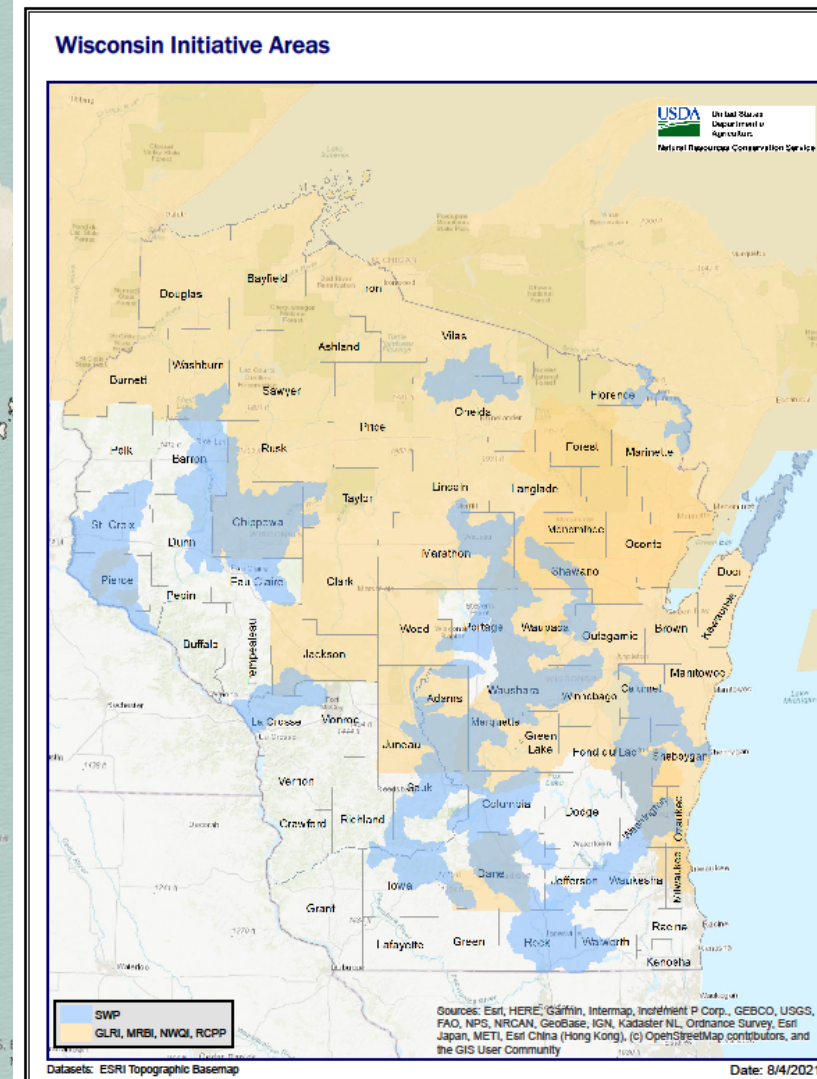
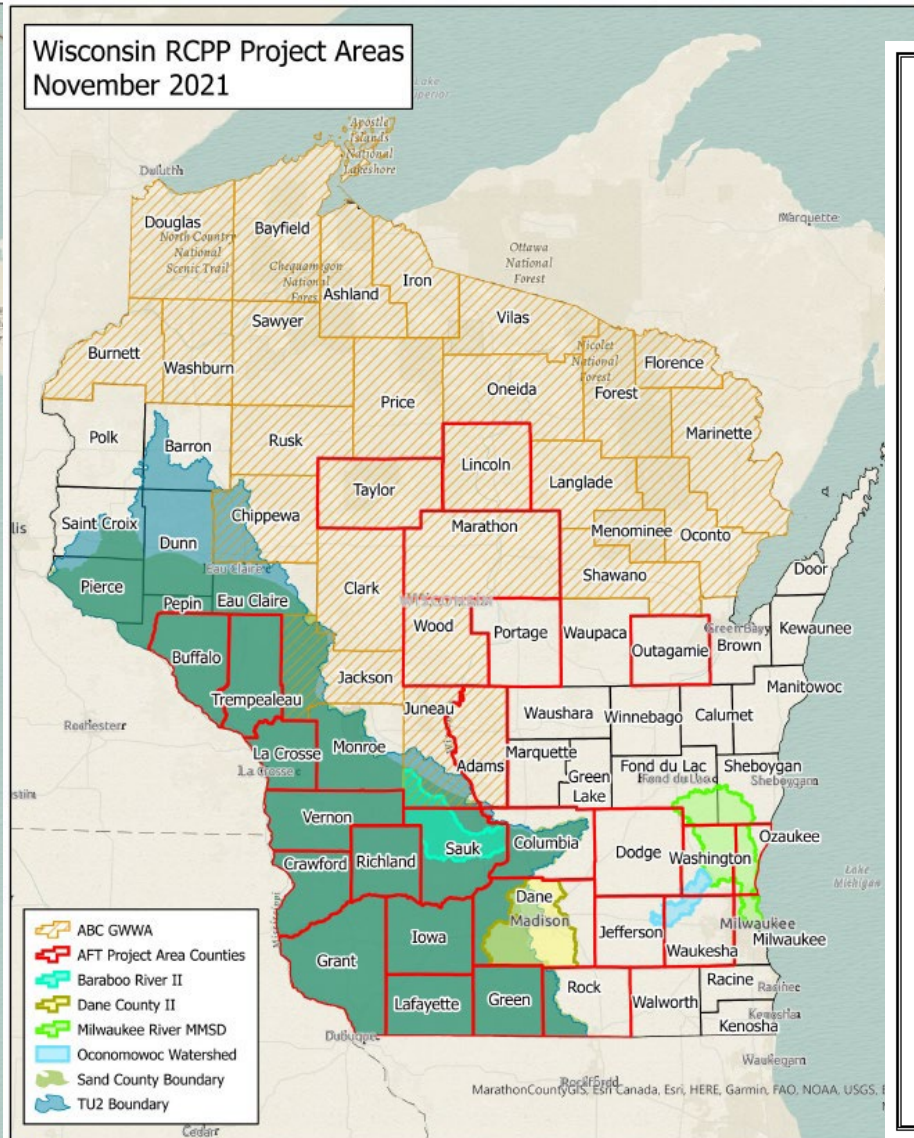
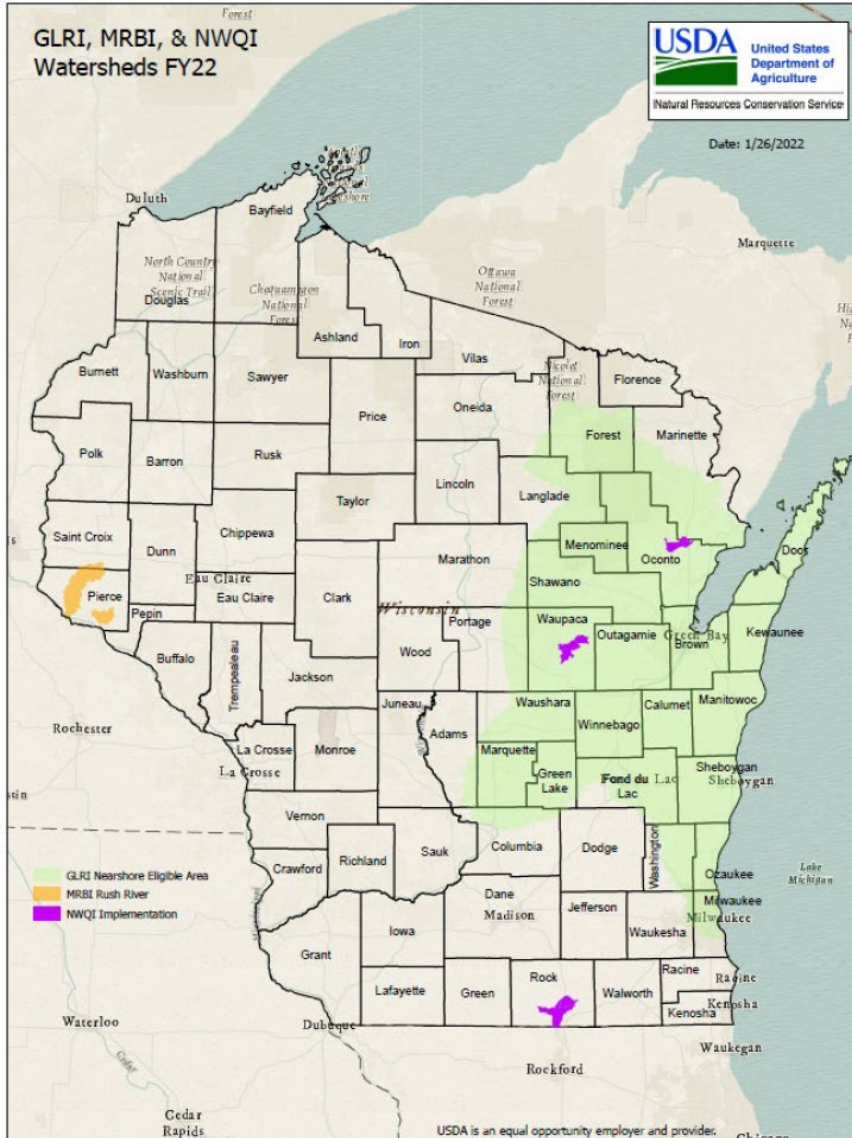


# Conservation Practices Currently Approved for Source Water Protection Financial Assistance – 90%

- Composting Facility (317)
- Conservation Cover (327)
- Conservation Crop Rotation (328)
- Constructed Wetland (656)
- Cover Crop (340)
- Contour Buffer Strips (332)
- Denitrifying Bioreactor (605)
- Diversion (362)
- Drainage Water Management (554)
- Field Border (386)
- Filter Strip (393)
- Forage and Biomass Planting (512)
- Grade Stabilization Structure (410)
- Grassed Waterway (412)
- Pest Management Conservation System (595)
- Irrigation Water Management (449)
- Karst Sinkhole Treatment (527)
- Nutrient Management (590)
- Prescribed Grazing (528)
- Residue and Tillage Management, No-Till (329)
- Riparian Forest Buffer (391)
- Roof Runoff Structure (558)
- Roofs and Covers (367)
- Saturated Buffer (604)
- Stripcropping (585)
- Terrace (600)
- Tree/Shrub Establishment (612)
- Waste Facility Closure (360)
- Waste Separation Facility (632)
- Waste Storage Facility (313)
- Waste Treatment (629)
- Water and Sediment Control Basin (638)
- Well Decommissioning (351)
- Wetland Restoration (657)

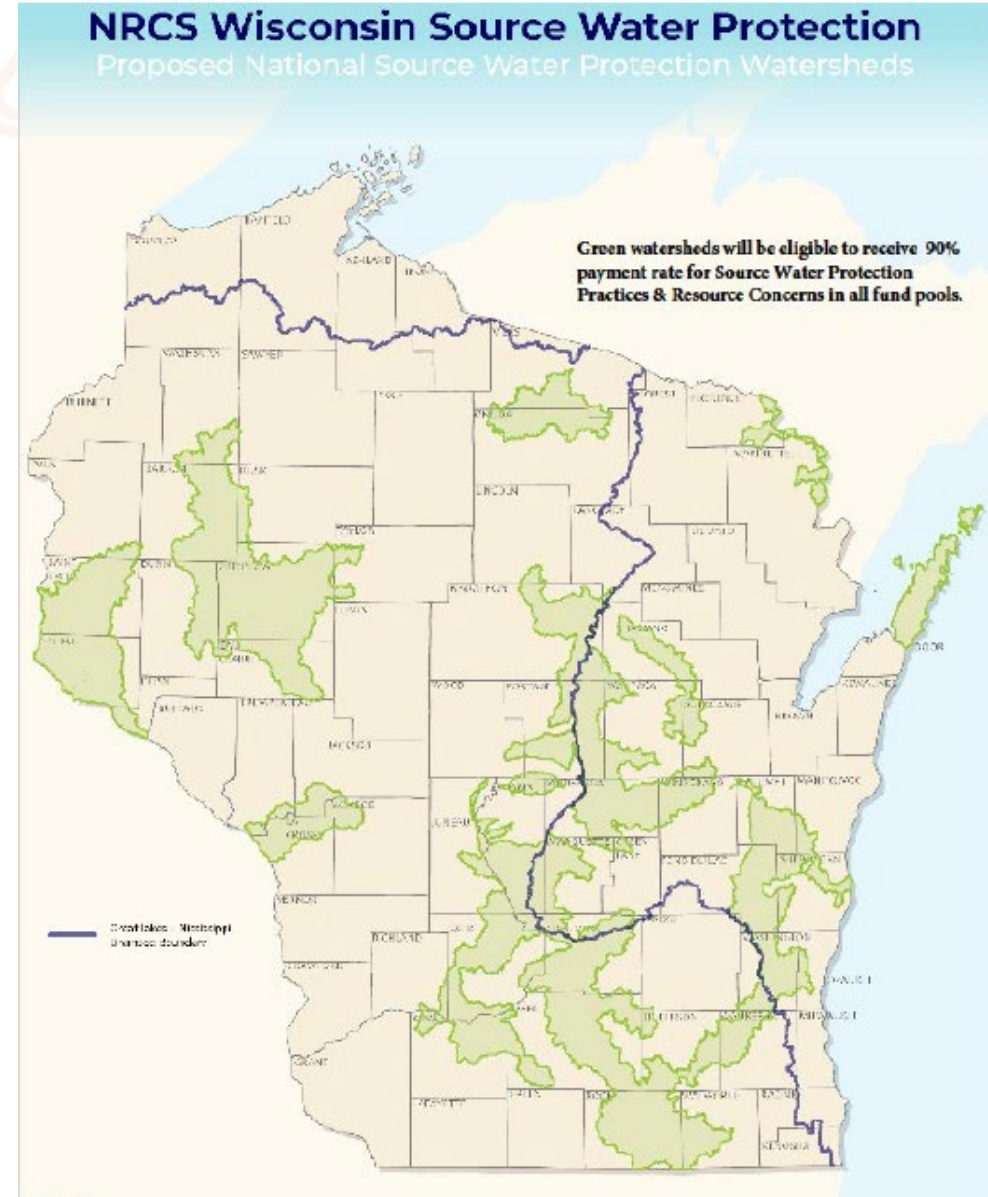


# Reviewed Other Projects with Potential Overlap



# Recommendations for 2023

- Which HUC 12 watersheds to include for FY23?
  - Keep the same priority areas used in FY22 for FY23
- Type of systems addressed?
  - Ground water
- Source water threat type (pollutant)?
  - Nitrates



# Recommendations for 2024



- **Evaluate the contaminants**
  - **Nitrates**
  - **Pathogens**
  - **Phosphorus**
  - **Other**



Natural  
Resources  
Conservation  
Service

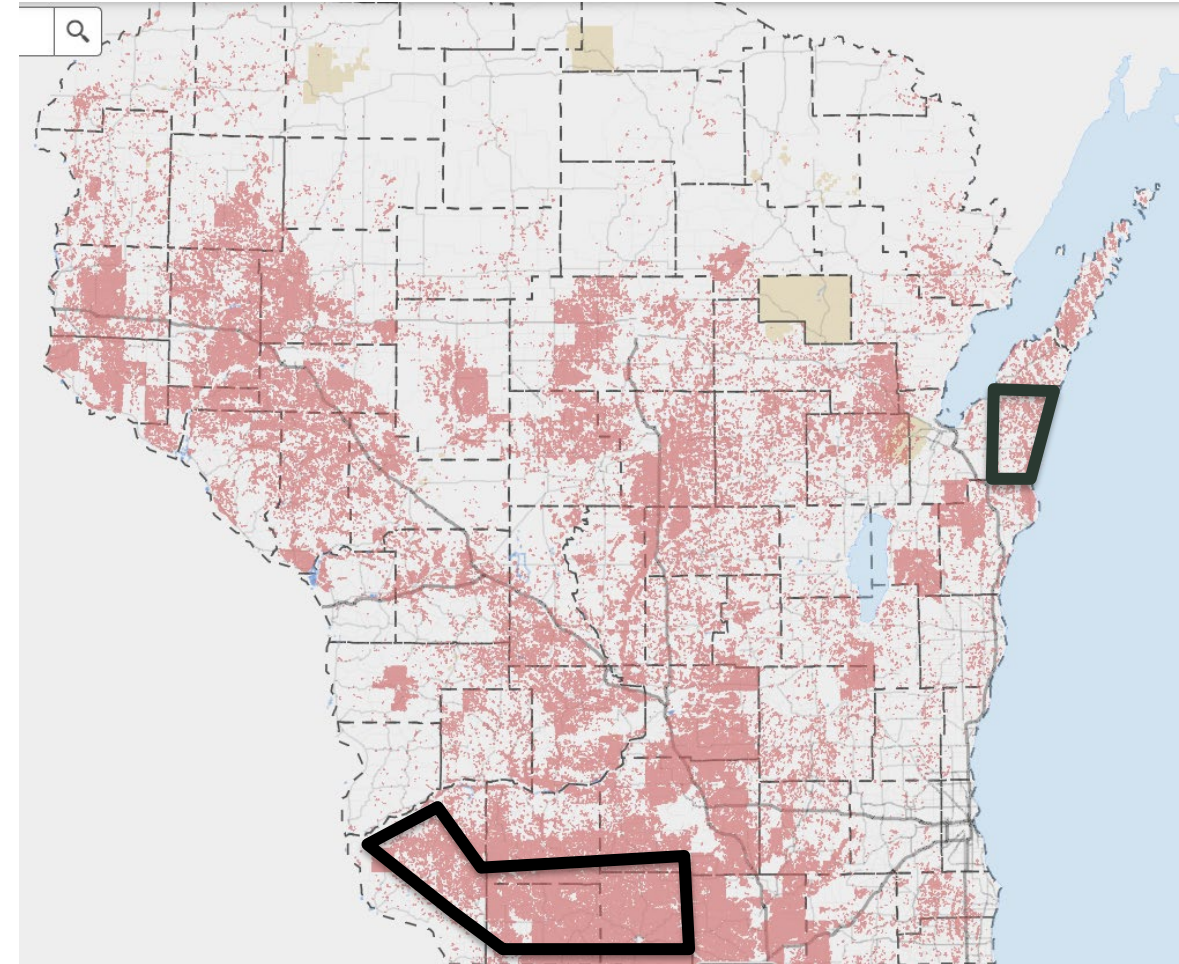
[nrcs.usda.gov/](https://nrcs.usda.gov/)



# Recommendations for 2024



- **Target areas**
  - Watersheds
  - Wellhead protection areas
    - Public
    - Private
  - Urban areas
  - Risk factors (e.g. karst)
  - Look at and evaluate model communities
  - Surface and/or ground water
  - Water quantity?



Conservation  
Service

[nrcs.usda.gov/](https://nrcs.usda.gov/)



# Recommendations for 2024



## ■ Conservation Practices

- Do we have the right ones – how effective are they?
- Classify by systems (e.g. for grazing)
- “Tweak” practices to target source water protection
- Are there new practices to include?
- Financial assistance priorities
- Cover crops and N management
- 590 Enhancements
  - Irrigation water nitrogen credits
  - Nitrogen Management Tool



Natural  
Resources  
Conservation  
Service

[nrcs.usda.gov/](https://nrcs.usda.gov/)



# Recommendations for 2024



- **Coordinate with other state initiatives**
  - **Technical criteria**
  - **Data reporting**



Natural  
Resources  
Conservation  
Service

[nrcs.usda.gov/](https://nrcs.usda.gov/)



# End



**USDA is an equal opportunity provider, employer, and lender.**



Natural  
Resources  
Conservation  
Service

[nrcs.usda.gov/](https://nrcs.usda.gov/)