



Natural
Resources
Conservation
Service

Arizona Basin Outlook Report January 1, 2024



Issued by

Terry Cosby
Chief
Natural Resources Conservation Service
U.S. Department of Agriculture

Released by

Keisha L. Tatem
State Conservationist
Natural Resources Conservation Service
Phoenix, Arizona

Basin Outlook Reports And Federal – State – Private Cooperative Snow Surveys

How forecasts are made

Most of the annual streamflow in Arizona originates as snowfall that has accumulated in the mountains during the winter and early spring. As the snowpack accumulates, hydrologists estimate the runoff that will occur when it melts. Measurements of snow water equivalent at selected manual snow courses and automated Snow Telemetry (SNOTEL) sites, along with precipitation and streamflow values, are used in statistical and simulation models to prepare runoff forecasts. These forecasts are coordinated between hydrologists in the Natural Resources Conservation Service (NRCS) the National Weather Service, and the Salt River Project.

Forecasts of any kind are not perfect. Streamflow forecast uncertainty arises from three primary sources: (1) uncertainty of future weather conditions, (2) uncertainty in the forecasting procedure, and (3) errors in the data. The forecast, therefore, must be interpreted not as a single value but rather as a range of values with specific probabilities of occurrence. The middle of the range is expressed by the 50% exceedance probability forecast, for which there is a 50% chance that the actual flow will be above, and a 50% chance that the actual flow will be below, this value. To describe the expected range around this 50% value, four other forecasts are provided, two smaller values (90% and 70% exceedance probability) and two larger values (30%, and 10% exceedance probability). For example, there is a 90% chance that the actual flow will be more than the 90% exceedance probability forecast.

The wider the spread among these values, the more uncertain the forecast. As the season progresses, forecasts become more accurate, primarily because a greater portion of the future weather conditions become known. This is reflected by a narrowing of the range around the 50% exceedance probability forecast. Users should take this uncertainty into consideration when making operational decisions by selecting forecasts corresponding to the level of risk they are willing to assume about the amount of water to be expected. If users anticipate receiving a lesser supply of water, or are concerned about having an adequate water supply, they may want to base their decisions on the 90% or 70% exceedance probability forecasts. On the other hand, if users anticipate receiving too much water, or are concerned about the threat of flooding, they may want to base their decisions on the 30% or 10% exceedance probability forecasts. Regardless of the forecast value users choose, they should be prepared to deal with either more or less water.



For more water supply and resource management information, contact:

Travis Kolling
Water Supply Specialist
230 N. First Ave., Suite 509
Phoenix, AZ 85003-1706
Phone: (602) 280-8834
Email: travis.kolling@az.usda.gov

The United States Department of Agriculture (USDA) prohibits discrimination in its programs on the basis of race, color, national origin, sex, religion, age, disability, political beliefs and marital or familial status. (Not all prohibited bases apply to all programs.) Persons with disabilities who require alternative means for communication of program information (Braille, large print, audiotape, etc.) should contact USDA's TARGET Center at 202-720-2600 (voice and TDD).

To file a complaint, write the Secretary of Agriculture, U.S. Department of Agriculture, Washington, D.C., 20250, or call 1-800-245-6340 (voice) or (202) 720-1127 (TDD). USDA is an equal employment opportunity employer.

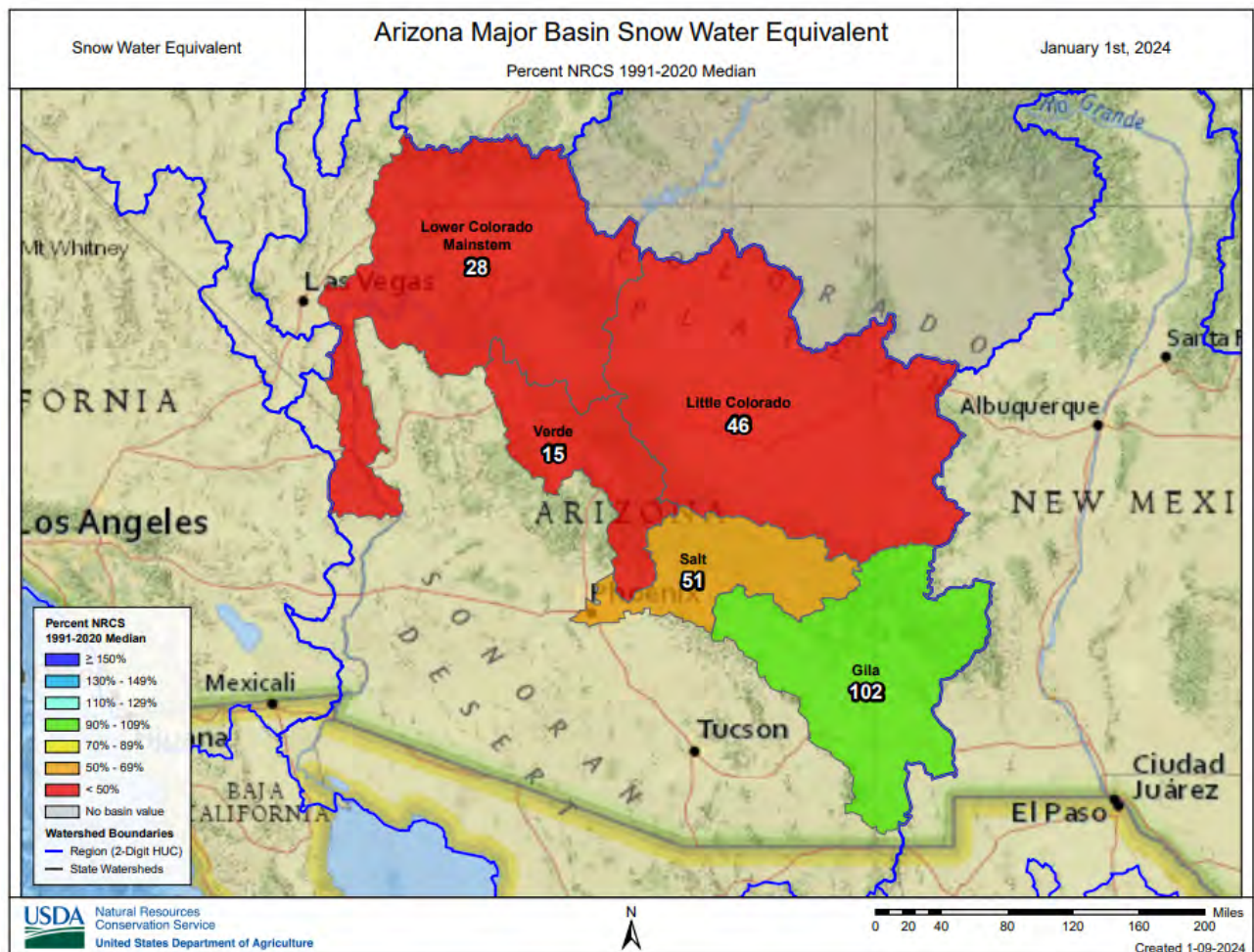
ARIZONA Basin Outlook Report as of January 1, 2024

SUMMARY

As of January 1, snowpack is at well below median to median levels throughout the major basins of the state. Precipitation for the month of December was well below median to below median in the major river basins. The Salt and Verde River reservoir system stands at 80 percent of capacity, while San Carlos Reservoir is at 37 percent of capacity. The forecast calls for well below median to above median runoff in the major basins for the spring runoff period.

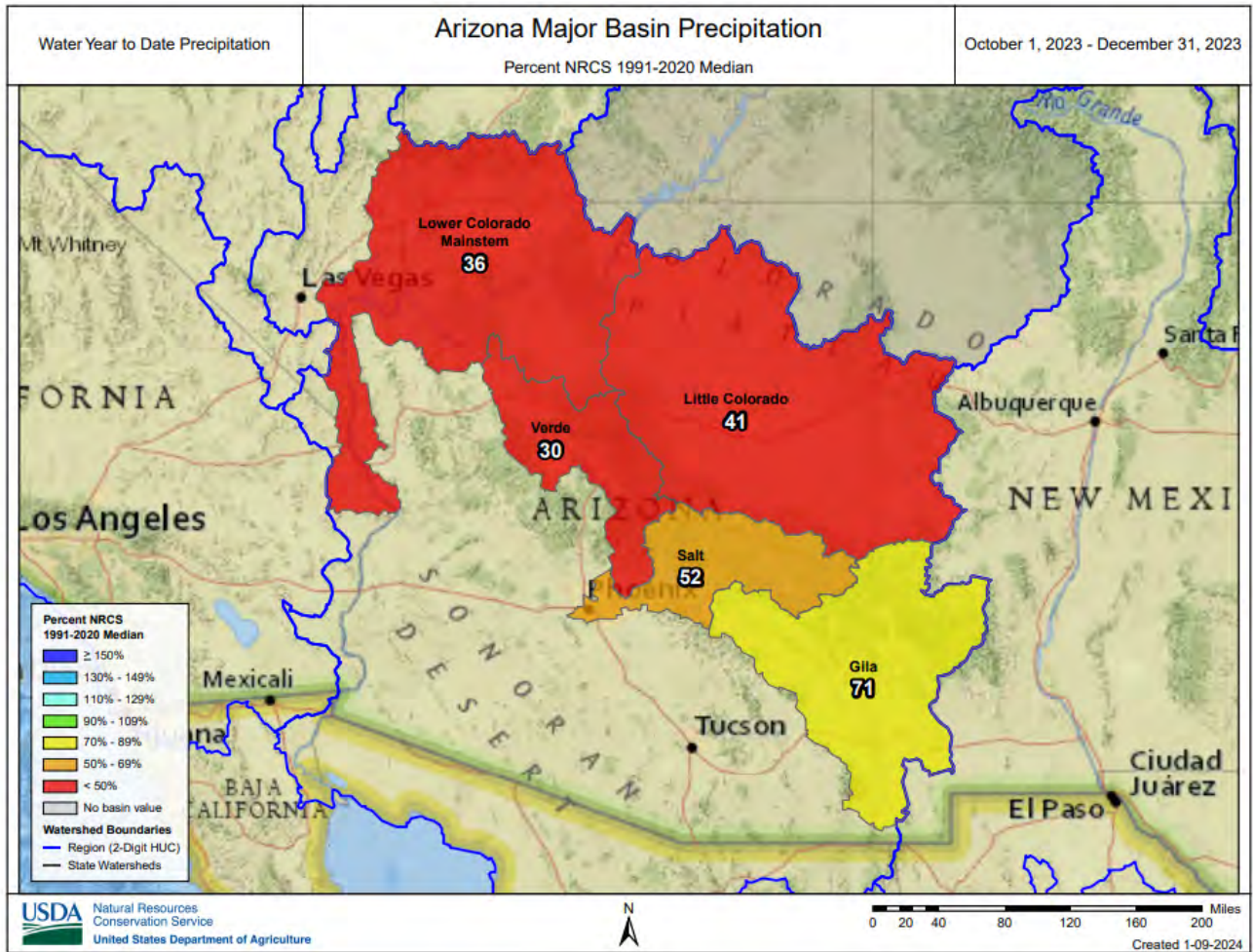
SNOWPACK

Snow water equivalent in the state's major river basins are well below median to median levels, ranging from 15 percent of median in the Verde River Basin to 102 percent of median in the Gila River Basin.



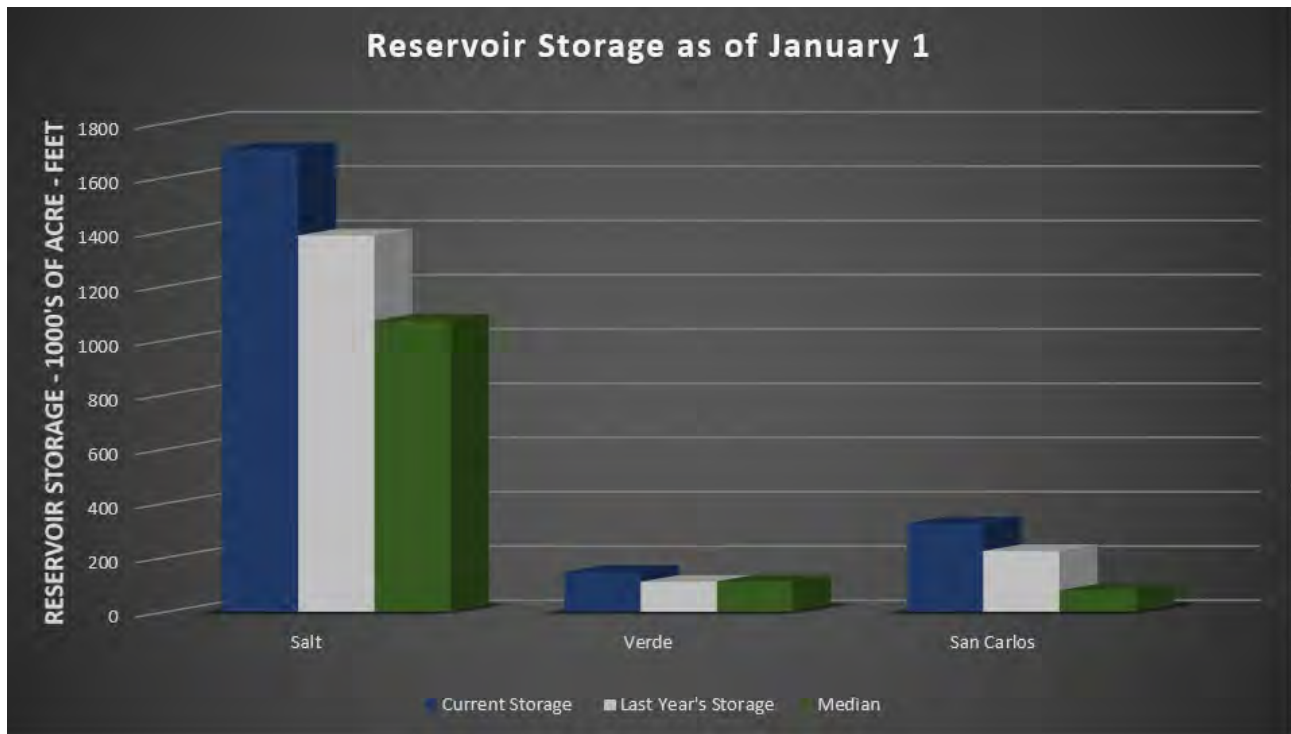
PRECIPITATION

Mountain data from NRCS SNOTEL sites and NWS Cooperator gages show that precipitation for December was well below median to below median in the major river basins, while cumulative precipitation since October 1 ranged from well below median to below median levels throughout the state.



RESERVOIR STORAGE

As of January 1, the Salt and Verde River reservoir system stands at 80 percent of capacity. San Carlos Reservoir is currently at 37 percent of capacity.

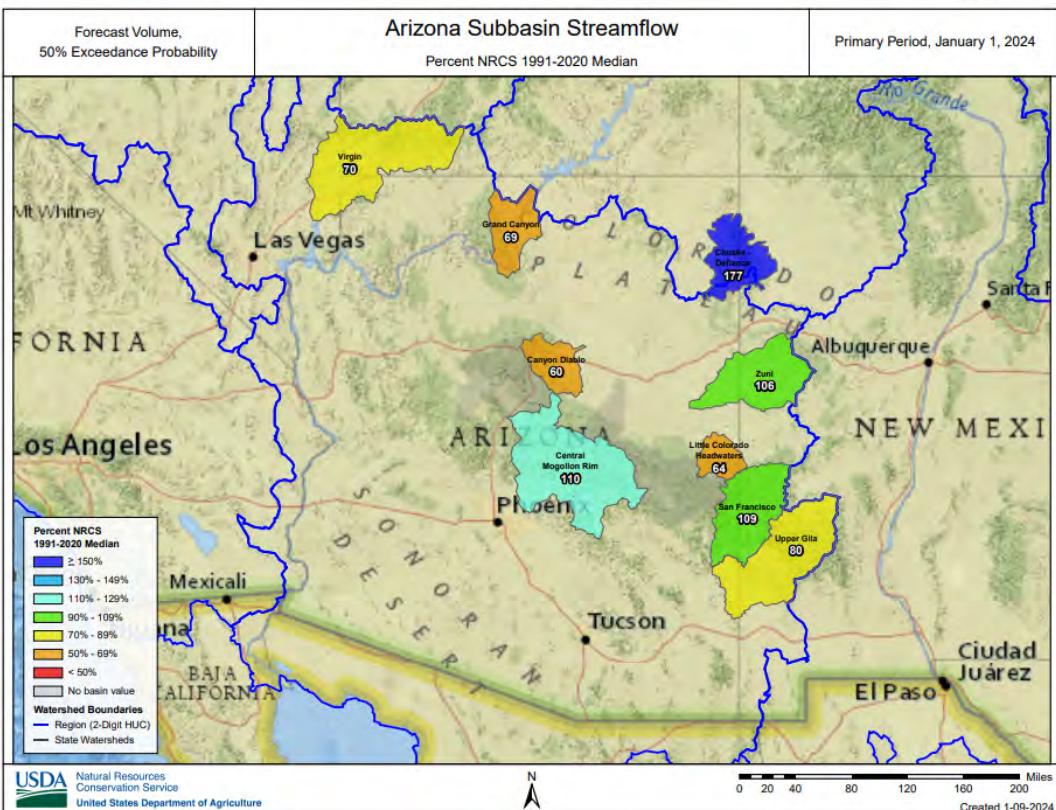
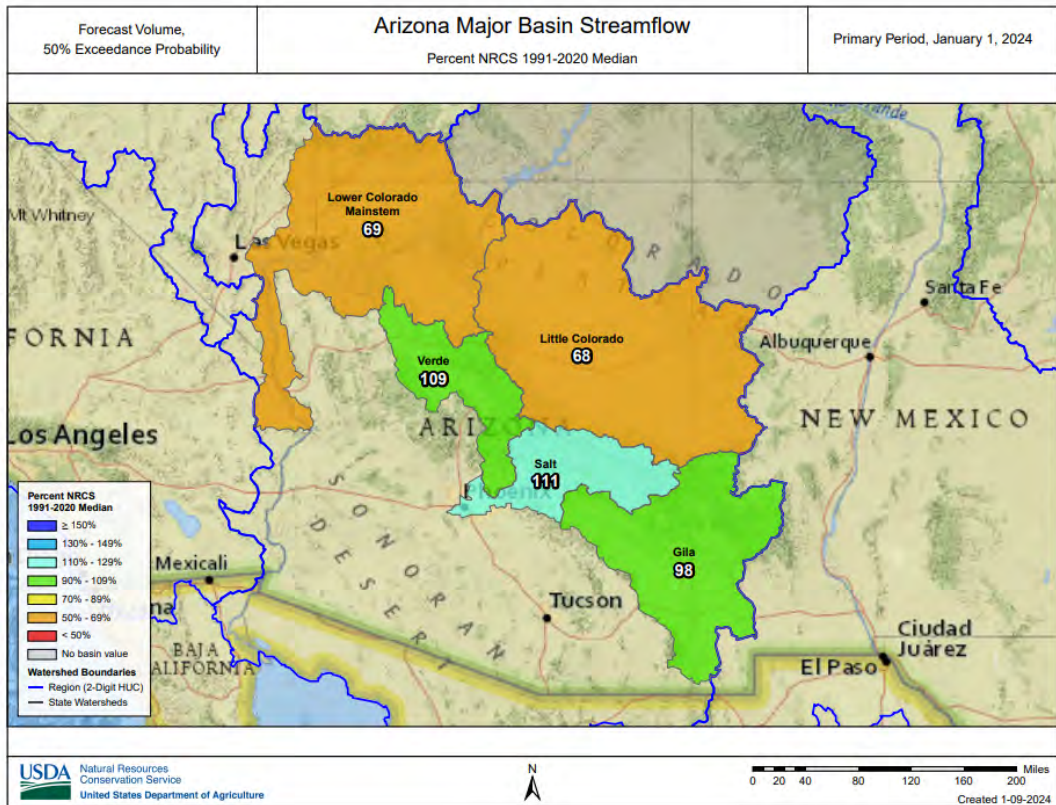


Key storage volumes displayed in thousands of acre-feet (x1000):

<u>Reservoir</u>	<u>Current Storage</u>	<u>Last Year Storage</u>	<u>30-Year Median</u>	<u>Storage Capacity</u>
Salt River System	1704.8	1387.2	1073.0	2025.8
Verde River System	147.4	111.5	112.8	287.4
San Carlos Reservoir	326.6	224.5	79.4	875.0
Lyman Lake	12.1	6.4	7.1	30.0
Lake Havasu	576.4	562.3	558.0	619.0
Lake Mohave	1627.0	1614.0	1608.0	1810.0
Lake Mead	9055.5	7313.0	15014.0	26159.0
Lake Powell	8441.0	5531.0	13921.0	24322.0

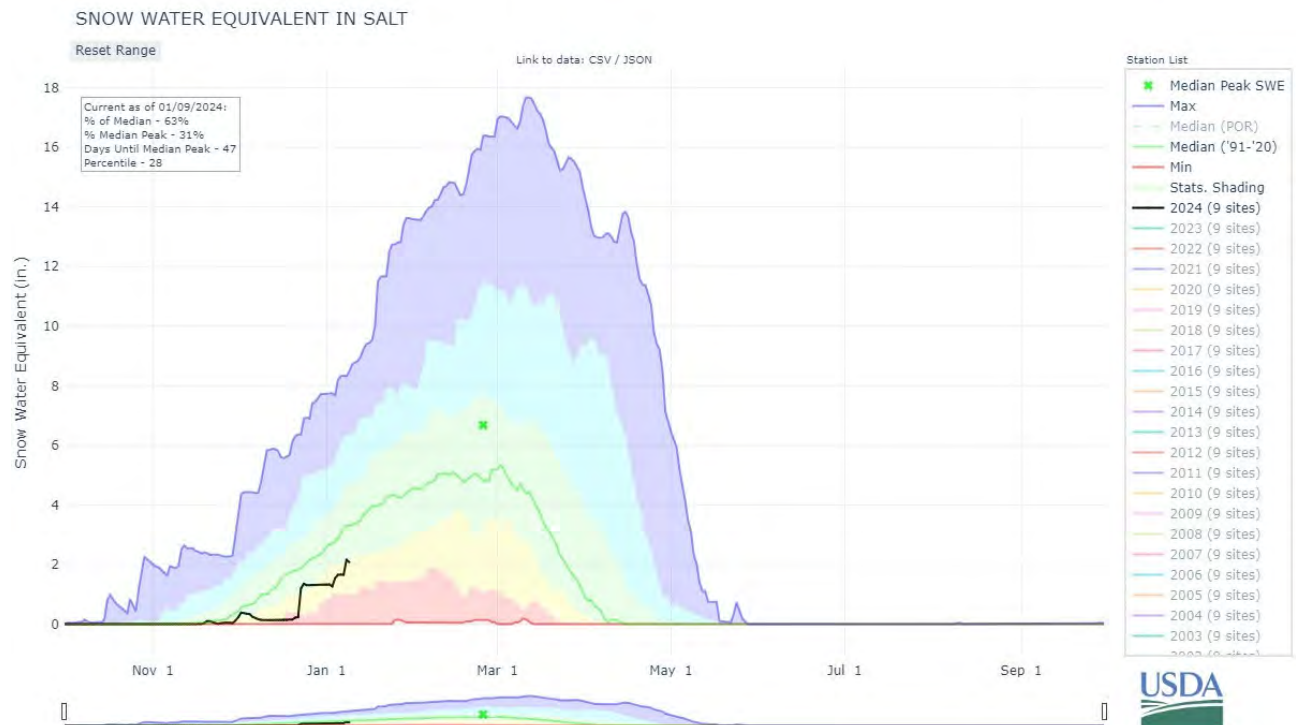
STREAMFLOW

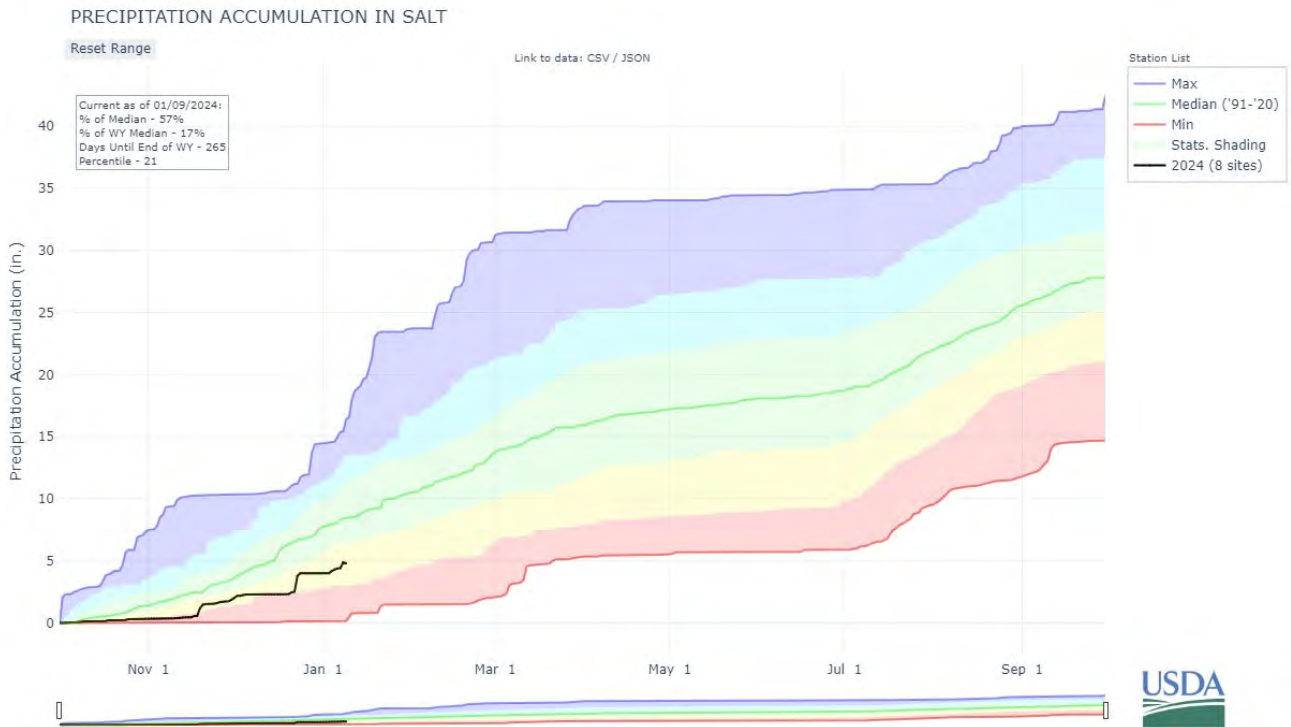
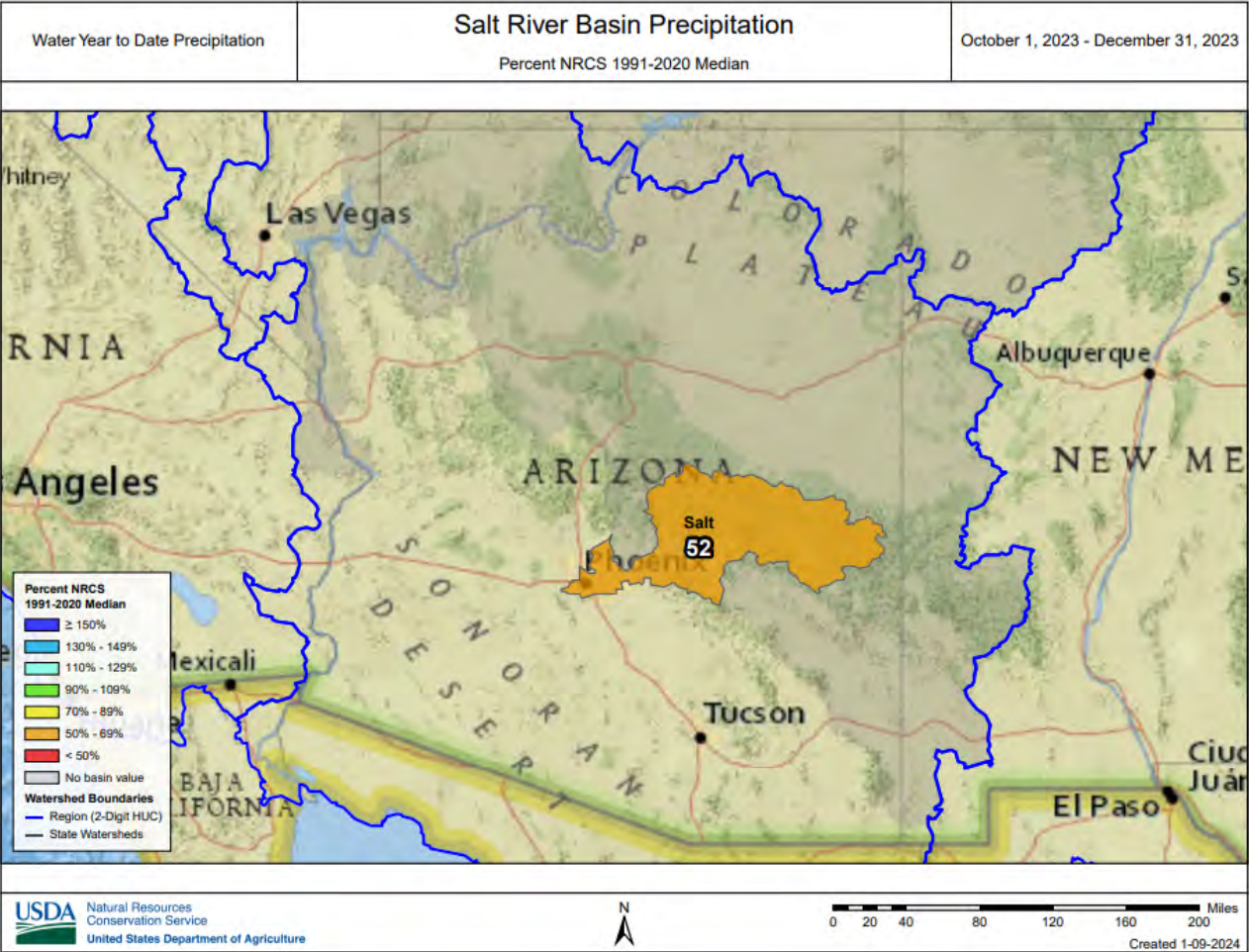
As of January 1, the forecast calls for well below to above median streamflow for the spring runoff period, ranging from 68 percent of median in the Little Colorado River Basin to 111 percent of median in the Salt River Basin. Please refer to the basin forecast tables found in this report for more information regarding water supply forecasts.



SALT RIVER BASIN as of January 1, 2024

Above median streamflow levels are forecast for the basin. In the Salt River, near Roosevelt, the forecast calls for 110% of median streamflow through May, while at Tonto Creek, the forecast calls for 115% of median streamflow through May. Snow survey measurements show the Salt snowpack to be at 51% of median.







Salt Streamflow Forecasts - January 1, 2024

Forecast Exceedance Probabilities For Risk Assessment
Chance that actual volume will exceed forecast

Salt	Forecast Period	90% (KAF)	70% (KAF)	50% (KAF)	% Median	30% (KAF)	10% (KAF)	30yr Median (KAF)
Salt R nr Roosevelt	JAN	3.8	13	24	109%	40	74	22
	JAN-MAY	73	172	275	110%	410	690	250
	MAR-MAY	65	132	197	110%	280	440	179
Tonto Ck ab Gun Ck nr Roosevelt	JAN	0.49	2.1	4.3	113%	7.6	15	3.8
	JAN-MAY	6.4	24	45	115%	76	145	39

1) 90% And 10% exceedance probabilities are actually 95% And 5%

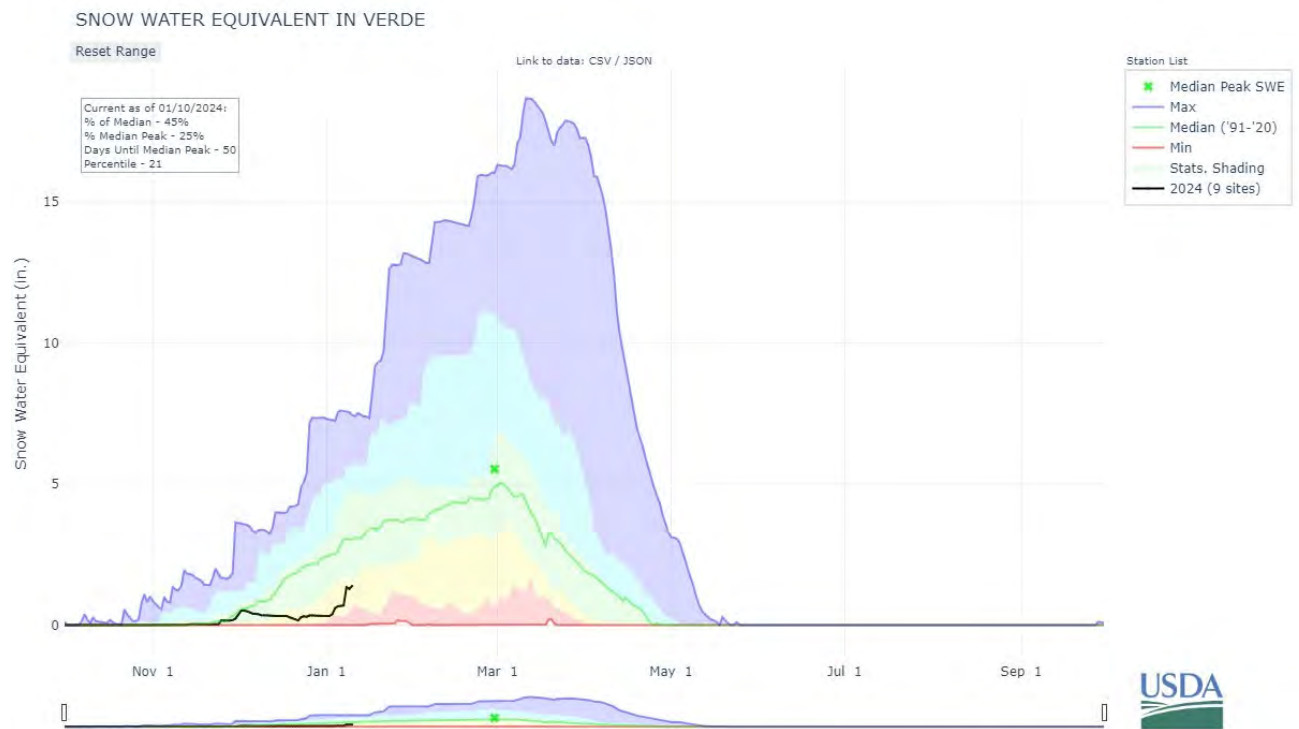
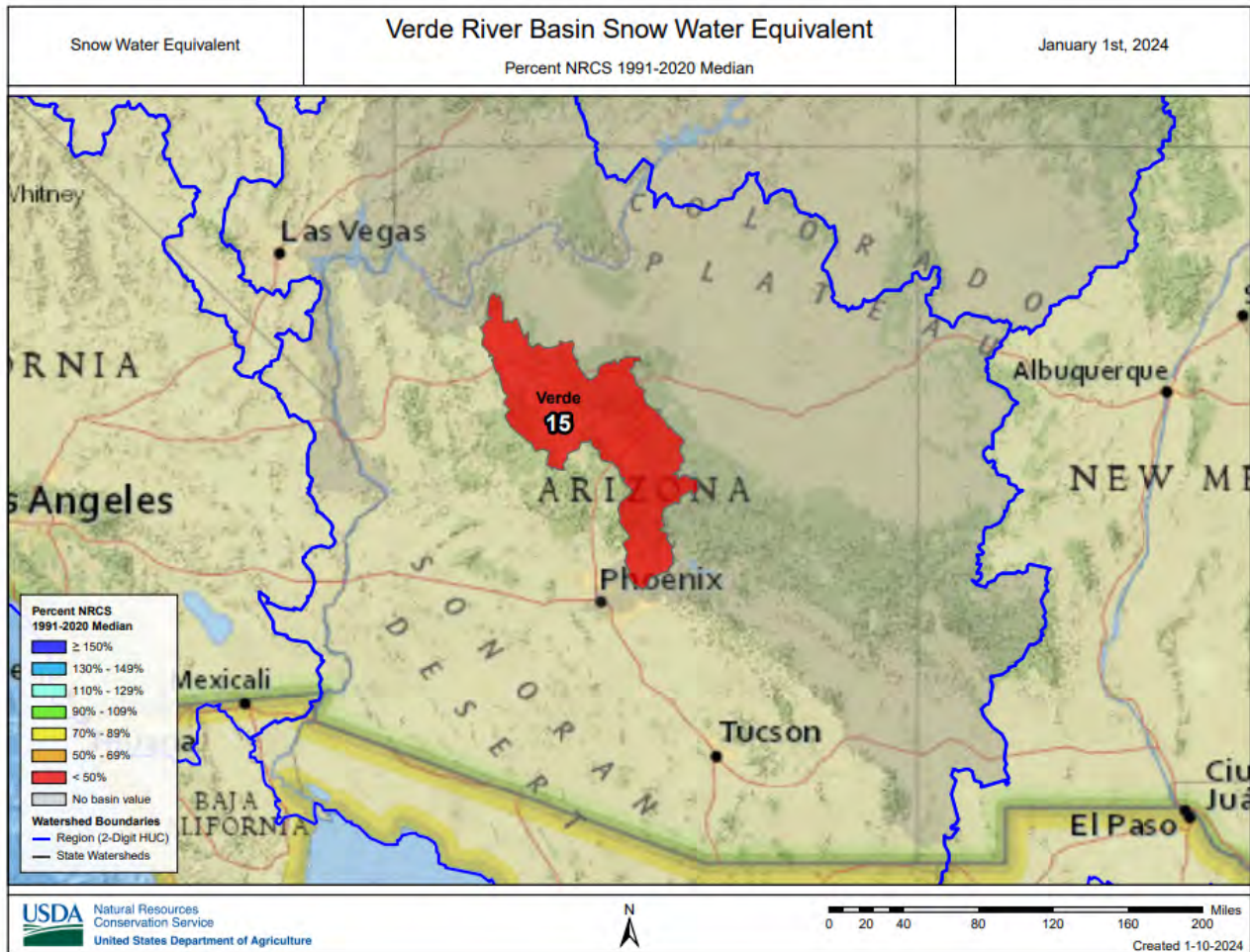
2) Forecasts are For unimpaired flows. Actual flow will be dependent On management of upstream reservoirs And diversions

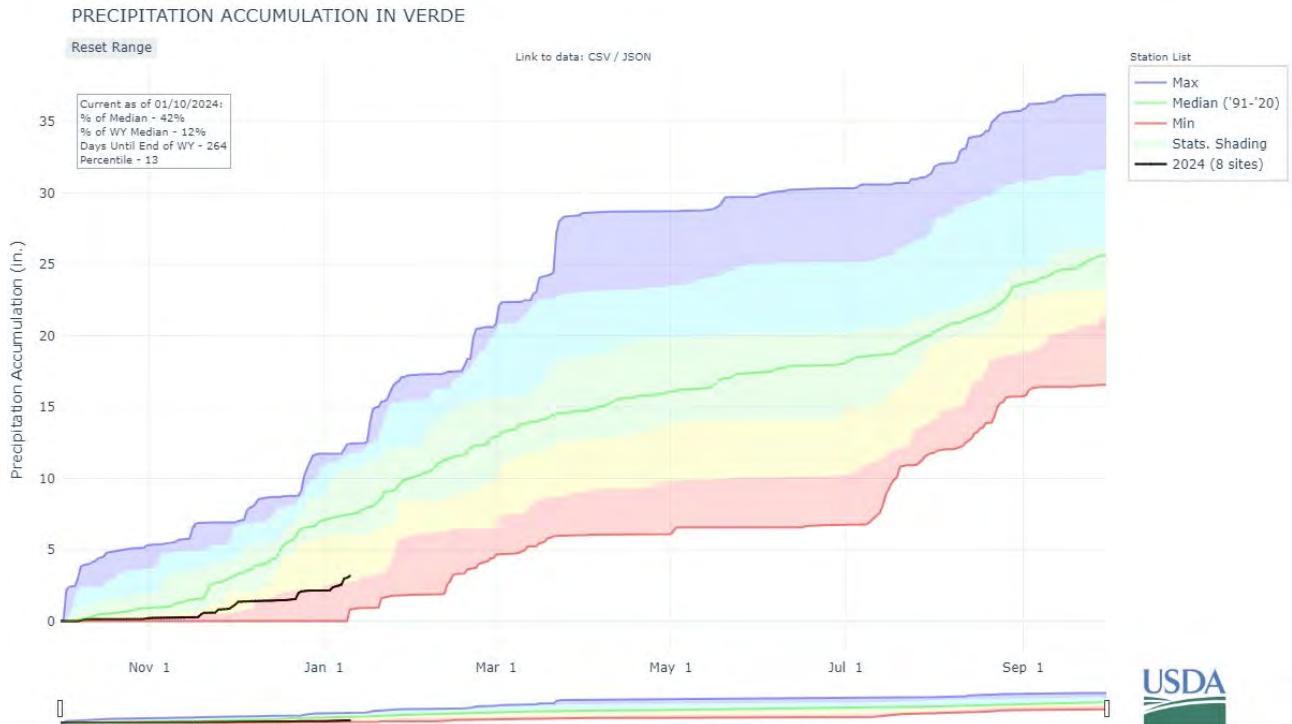
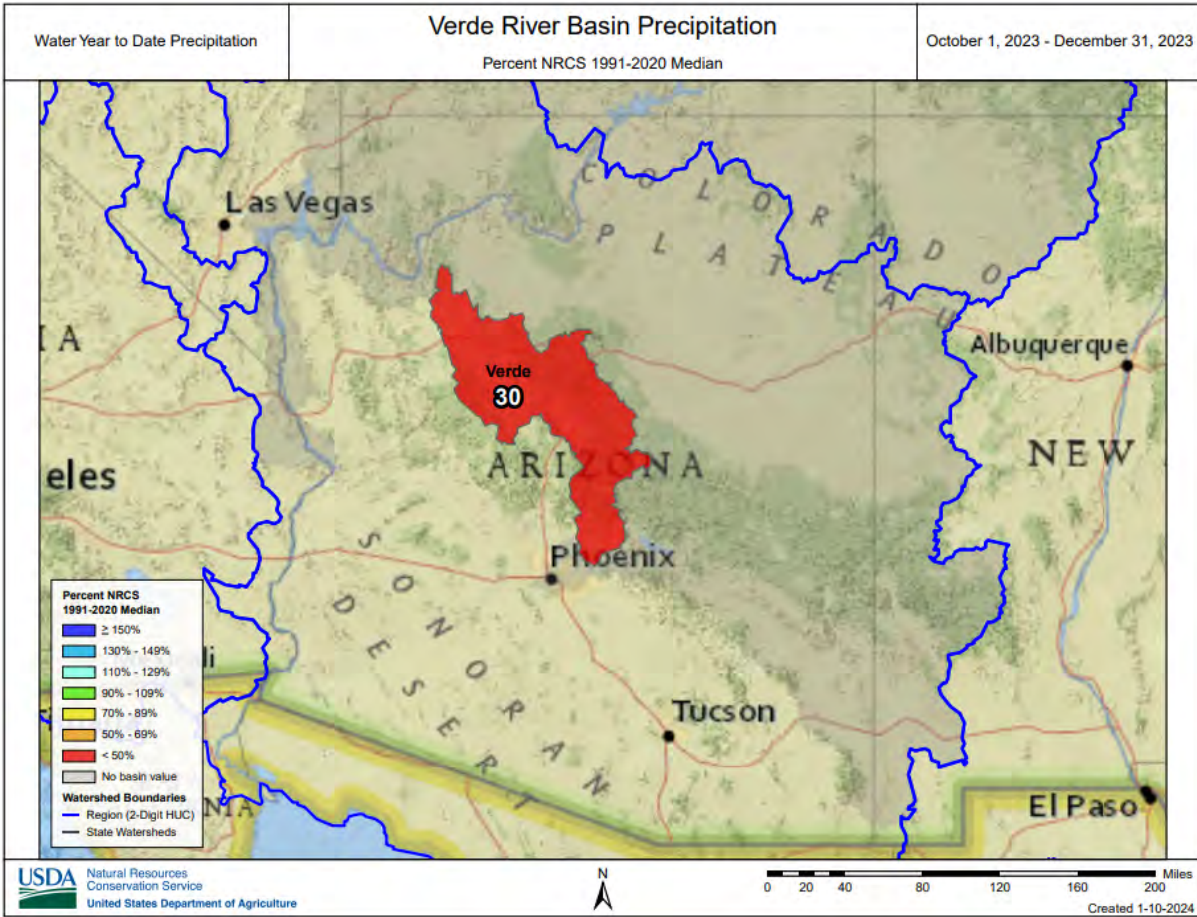
Reservoir Storage End of December, 2023	Current (KAF)	Last Year (KAF)	Median (KAF)	Capacity (KAF)
Salt River Reservoir System	1704.8	1387.2	1073.0	2025.8

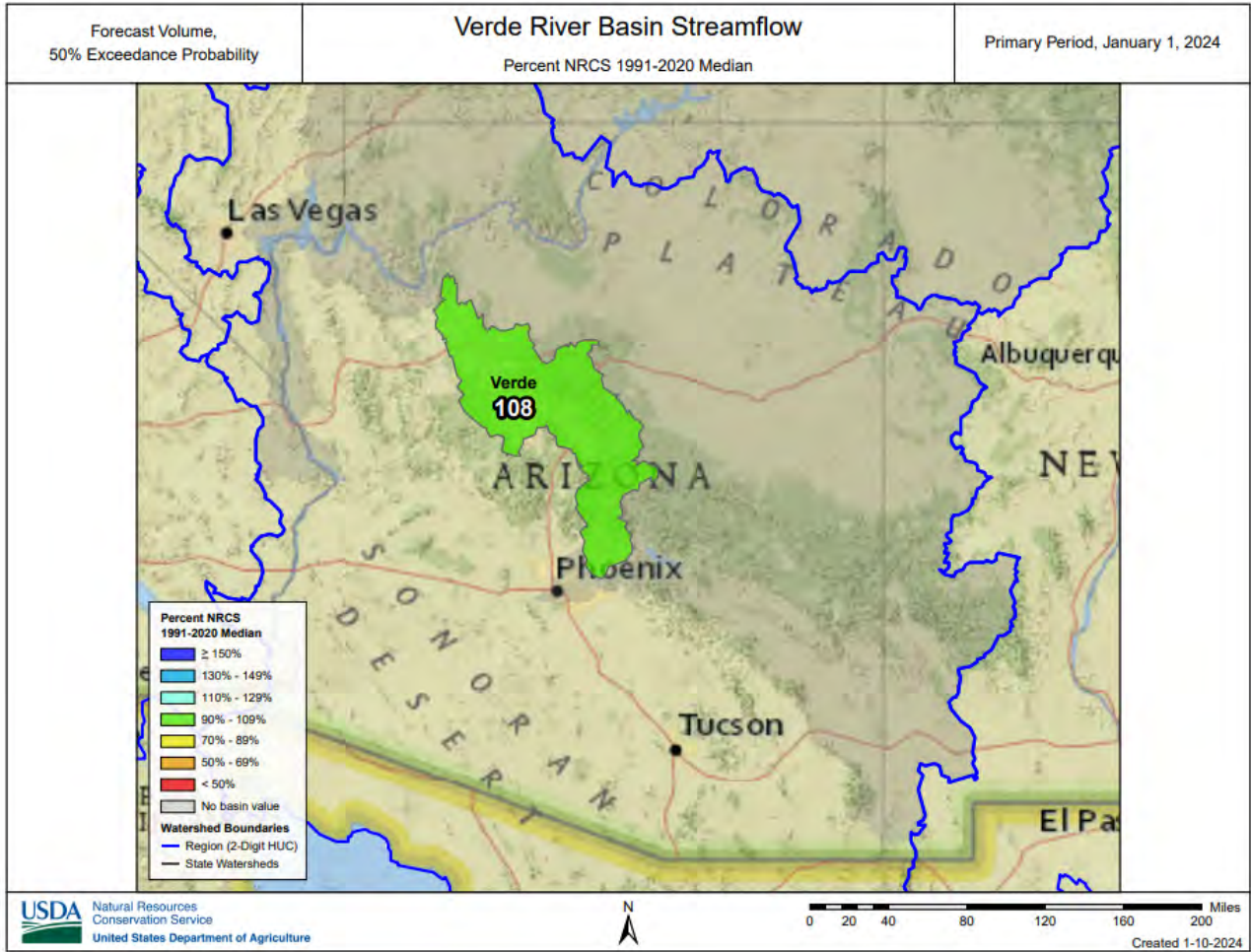
Watershed Snowpack Analysis January 1, 2024	# of Sites	% Median	Last Year % Median
Salt	10	49%	52%
Central Mogollon Rim	8	22%	102%
Upper Salt	7	57%	46%

VERDE RIVER BASIN as of January 1, 2024

Median streamflow levels are forecast for the basin. In the Verde River above Horseshoe Dam, the forecast calls for 109% of median streamflow through May. Snow survey measurements show the Verde snowpack to be at 15% of median.







**Verde
Streamflow Forecasts - January 1, 2024**

Forecast Exceedance Probabilities For Risk Assessment
Chance that actual volume will exceed forecast

Verde	Forecast Period	90% (KAF)	70% (KAF)	50% (KAF)	% Median	30% (KAF)	10% (KAF)	30yr Median (KAF)
Verde R bl Tangle Ck ab Horseshoe Dam								
	JAN	4.2	14.1	26	108%	43	80	24
	JAN-MAY	54	112	169	109%	245	385	155

1) 90% And 10% exceedance probabilities are actually 95% And 5%

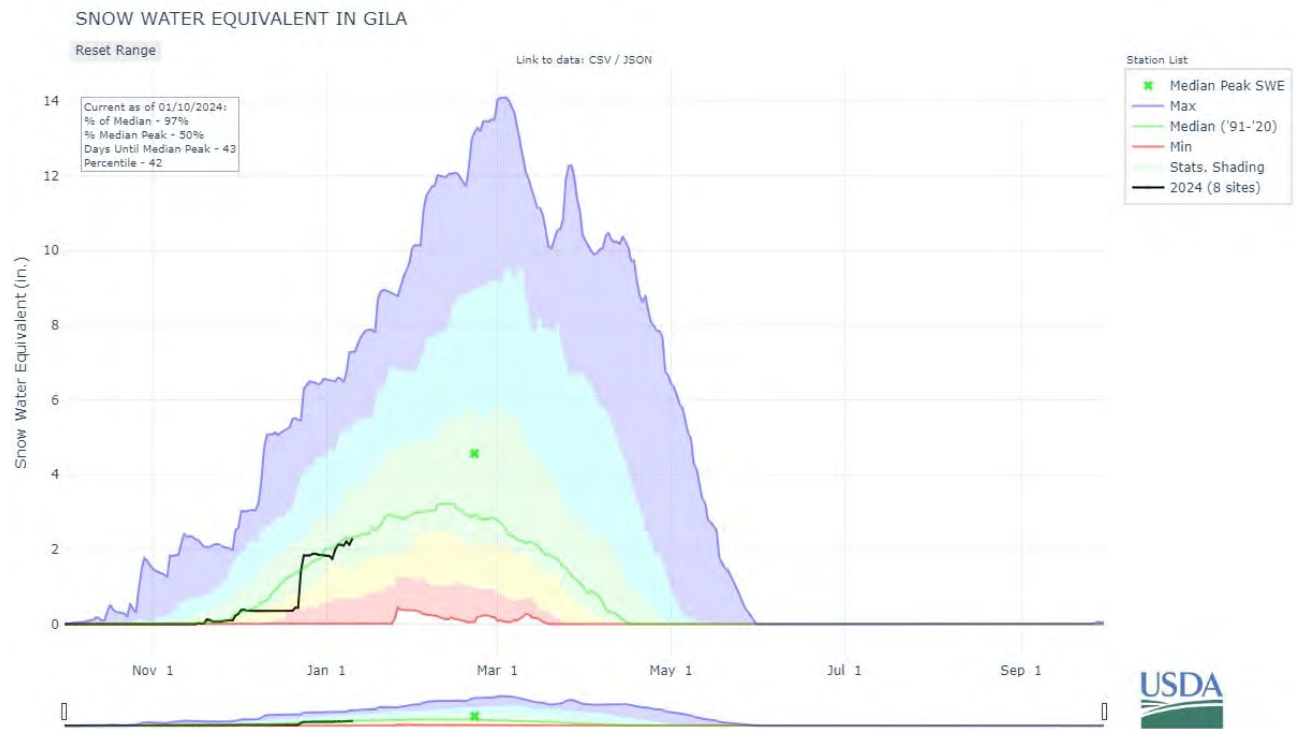
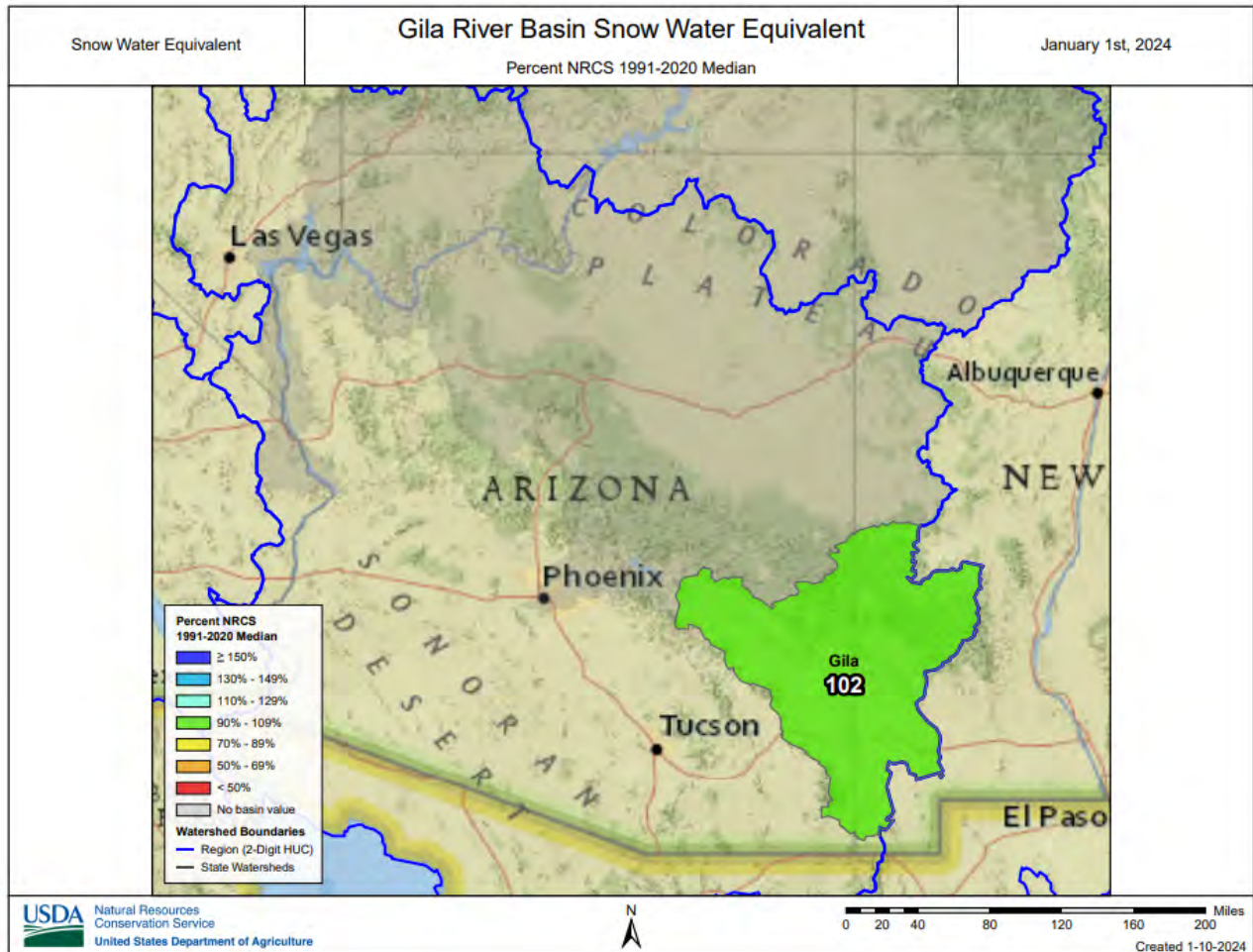
2) Forecasts are For unimpaired flows. Actual flow will be dependent On management of upstream reservoirs And diversions

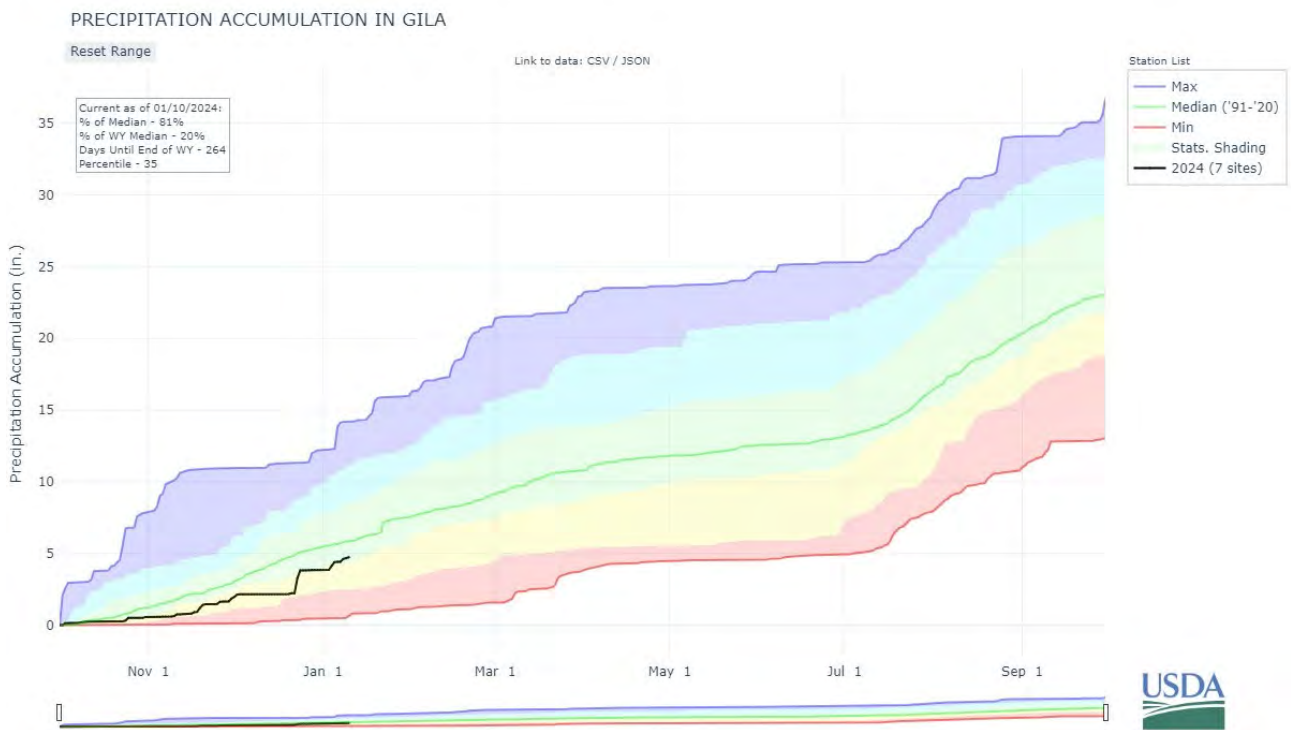
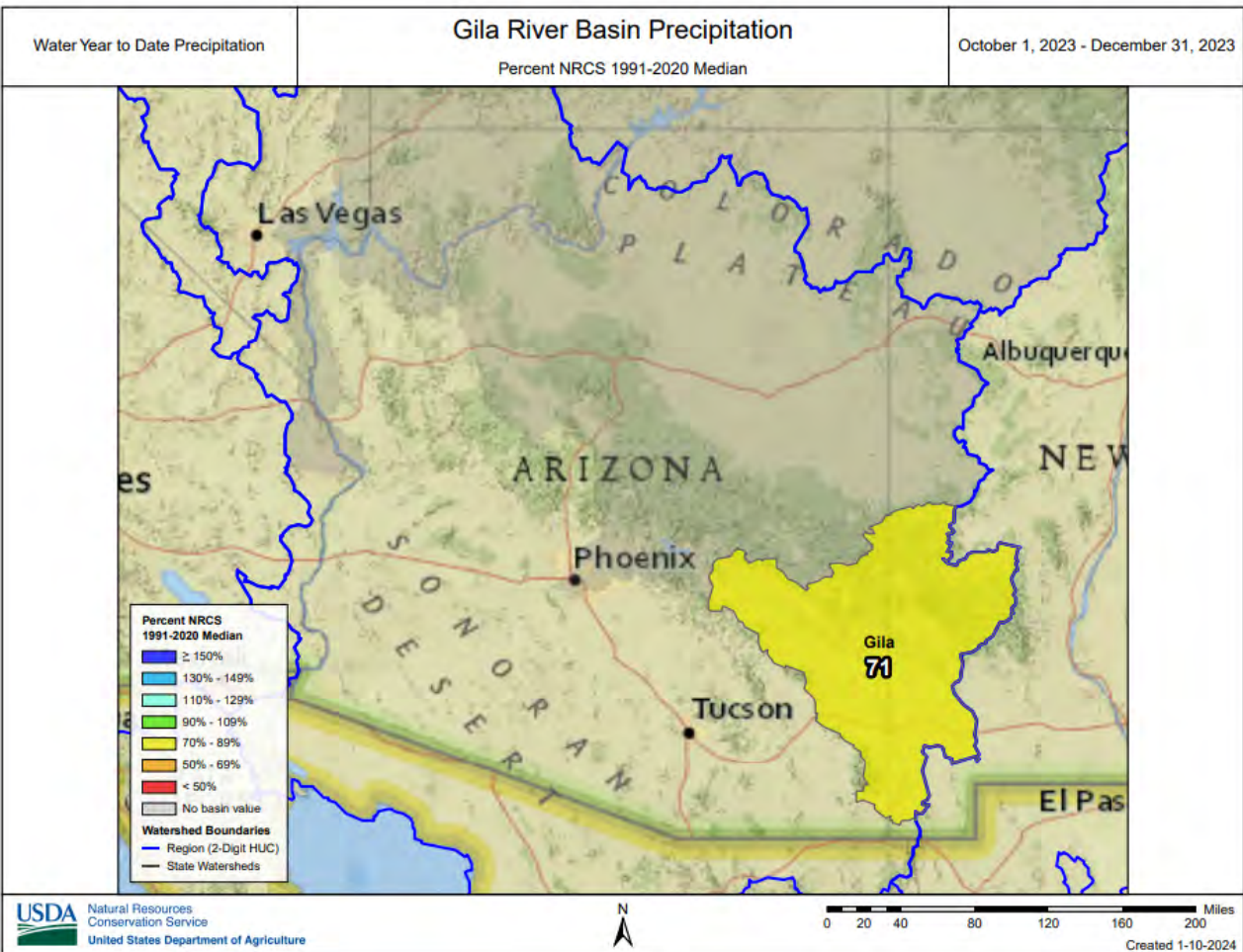
Reservoir Storage End of December, 2023	Current (KAF)	Last Year (KAF)	Median (KAF)	Capacity (KAF)
Verde River Reservoir System	147.4	111.5	112.8	287.4

Watershed Snowpack Analysis January 1, 2024	# of Sites	% Median	Last Year % Median
Verde	15	15%	118%
Upper Verde	12	11%	126%

SAN FRANCISCO-UPPER GILA RIVER BASIN as of January 1, 2024

Median streamflow levels are forecast for the basin. In the San Francisco River, at Clifton, the forecast calls for 109% of median streamflow levels through May. In the Gila River, near Solomon, the forecast calls for 101% of median streamflow levels through May. At San Carlos Reservoir, inflow to the lake is forecast at 115% of median through May. Snow survey measurements show the snowpack for this basin to be at 102% of median.







Gila
Streamflow Forecasts - January 1, 2024

Forecast Exceedance Probabilities For Risk Assessment
Chance that actual volume will exceed forecast

Gila	Forecast Period	90% (KAF)	70% (KAF)	50% (KAF)	% Median	30% (KAF)	10% (KAF)	30yr Median (KAF)
San Francisco R at Glenwood	JAN-MAY	4.1	11.6	20	108%	32	56	18.5
Gila R at Gila	JAN-MAY	14.7	29	43	83%	61	95	52
Gila R nr Solomon	JAN	3.2	10.4	19	119%	31	58	16
Gila R bl Blue Ck nr Virden	JAN-MAY	17.1	58	107	101%	178	330	106
San Francisco R at Clifton	JAN-MAY	14.1	32	50	78%	74	121	64
San Carlos Reservoir Inflow	JAN-MAY	8.9	27	48	109%	77	138	44
	JAN-MAY	7.4	39	84	115%	154	315	73

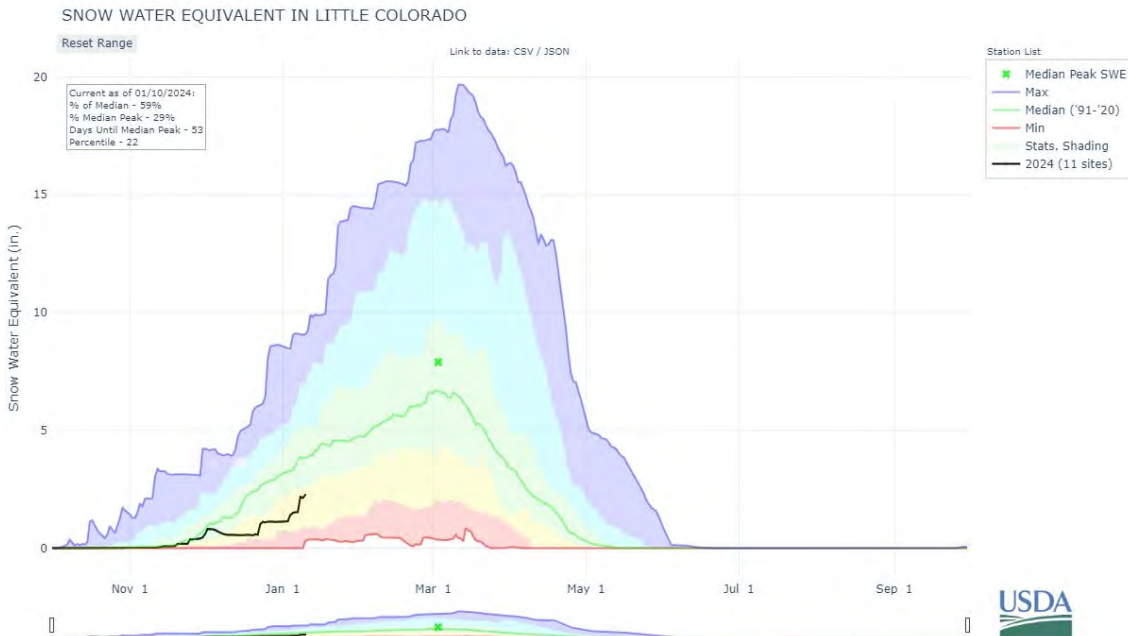
- 1) 90% And 10% exceedance probabilities are actually 95% And 5%
- 2) Forecasts are For unimpaired flows. Actual flow will be dependent On management of upstream reservoirs And diversions

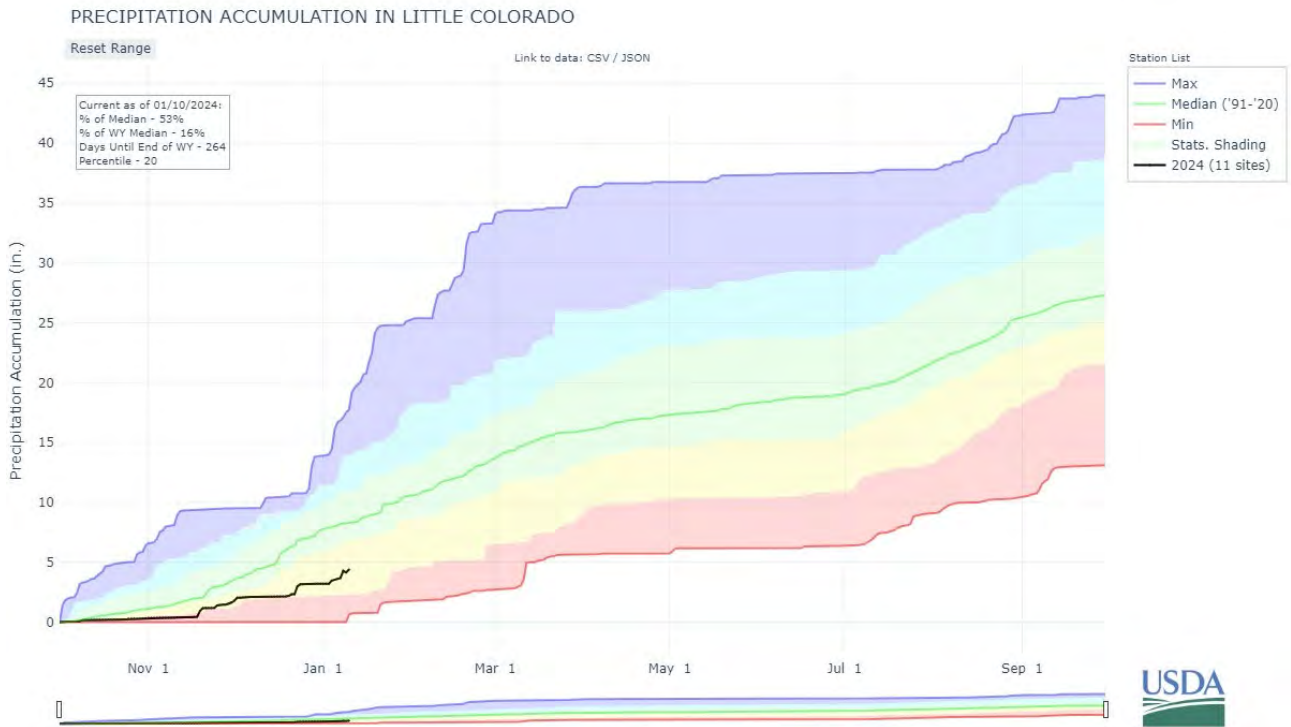
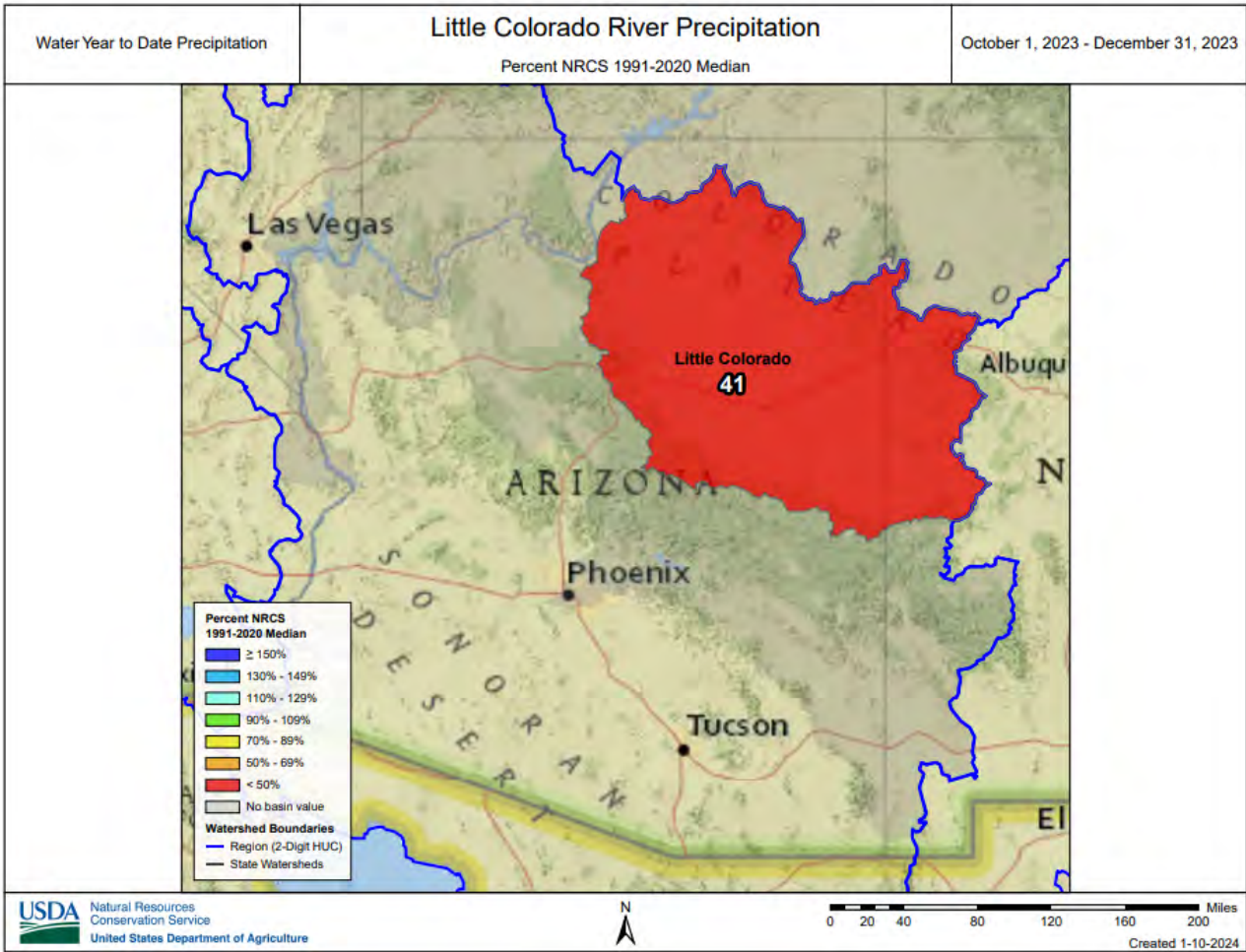
Reservoir Storage End of December, 2023	Current (KAF)	Last Year (KAF)	Median (KAF)	Capacity (KAF)
San Carlos Reservoir	326.6	224.5	79.4	875.0

Watershed Snowpack Analysis January 1, 2024	# of Sites	% Median	Last Year % Median
Gila	9	93%	57%
San Francisco	7	102%	62%
Upper Gila	3	97%	63%

LITTLE COLORADO RIVER BASIN as of January 1, 2024

Well below median streamflow levels are forecast for the basin. In the Little Colorado River, above Lyman Lake, the forecast calls for 64% of median streamflow through June. At Blue Ridge (C.C. Cragin) Reservoir, inflow to the lake is forecast at 65% of median through May. Snow survey measurements show the snowpack for this basin to be at 46% of median.







Little Colorado Streamflow Forecasts - January 1, 2024

Forecast Exceedance Probabilities For Risk Assessment
Chance that actual volume will exceed forecast

Little Colorado	Forecast Period	90% (KAF)	70% (KAF)	50% (KAF)	% Median	30% (KAF)	10% (KAF)	30yr Median (KAF)
Zuni R ab Black Rock Reservoir	JAN-MAY	0	0.02	0.14	108%	0.39	0.98	0.13
Bowl Canyon Ck ab Asaayi Lake	MAR-MAY	0.53	0.9	1.23	150%	1.63	2.4	0.82
Blue Ridge Reservoir Inflow	JAN-MAY	0.26	3.1	8.2	65%	17.1	39	12.6
Rio Nutria nr Ramah	JAN-MAY	0	0.29	0.77	105%	1.47	2.9	0.73
Lake Mary Reservoir Inflow	JAN-MAY	0.64	1.64	2.7	60%	4.1	7.1	4.5
Little Colorado R ab Lyman Lake	JAN-JUN	0.5	2.1	3.8	64%	6	10.2	5.9

1) 90% And 10% exceedance probabilities are actually 95% And 5%

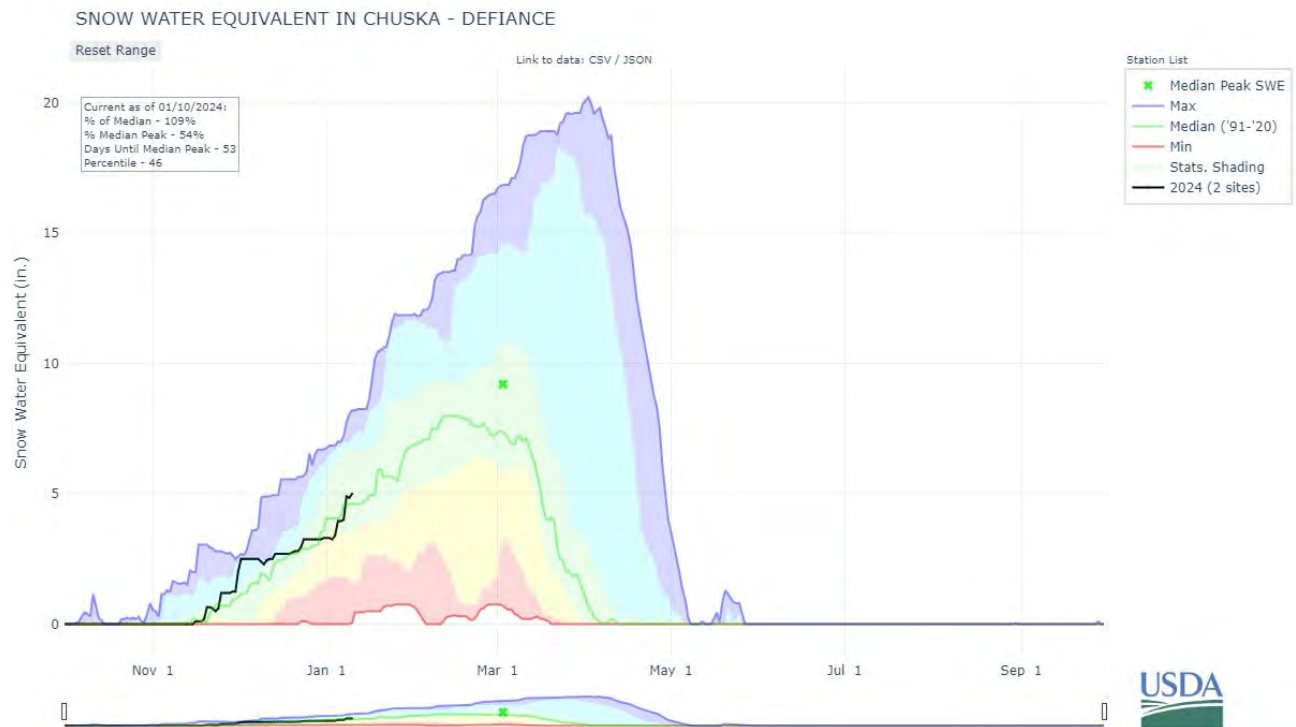
2) Forecasts are For unimpaired flows. Actual flow will be dependent On management of upstream reservoirs And diversions

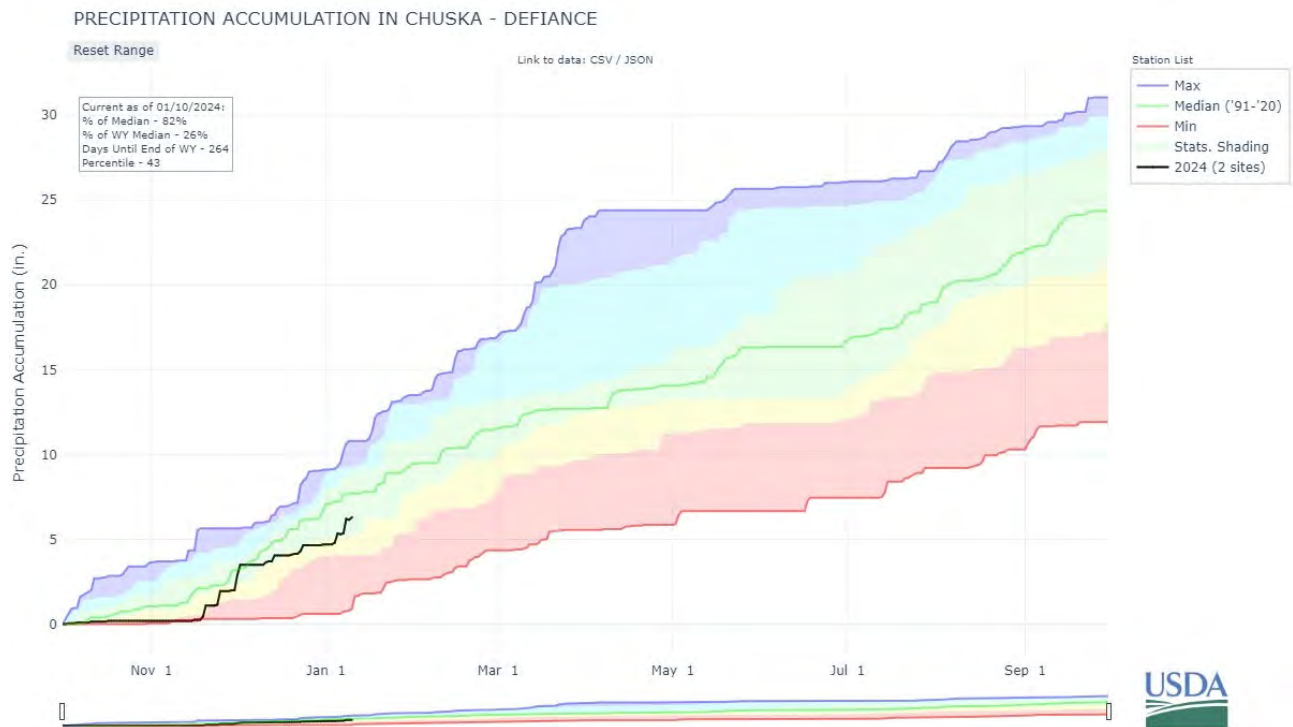
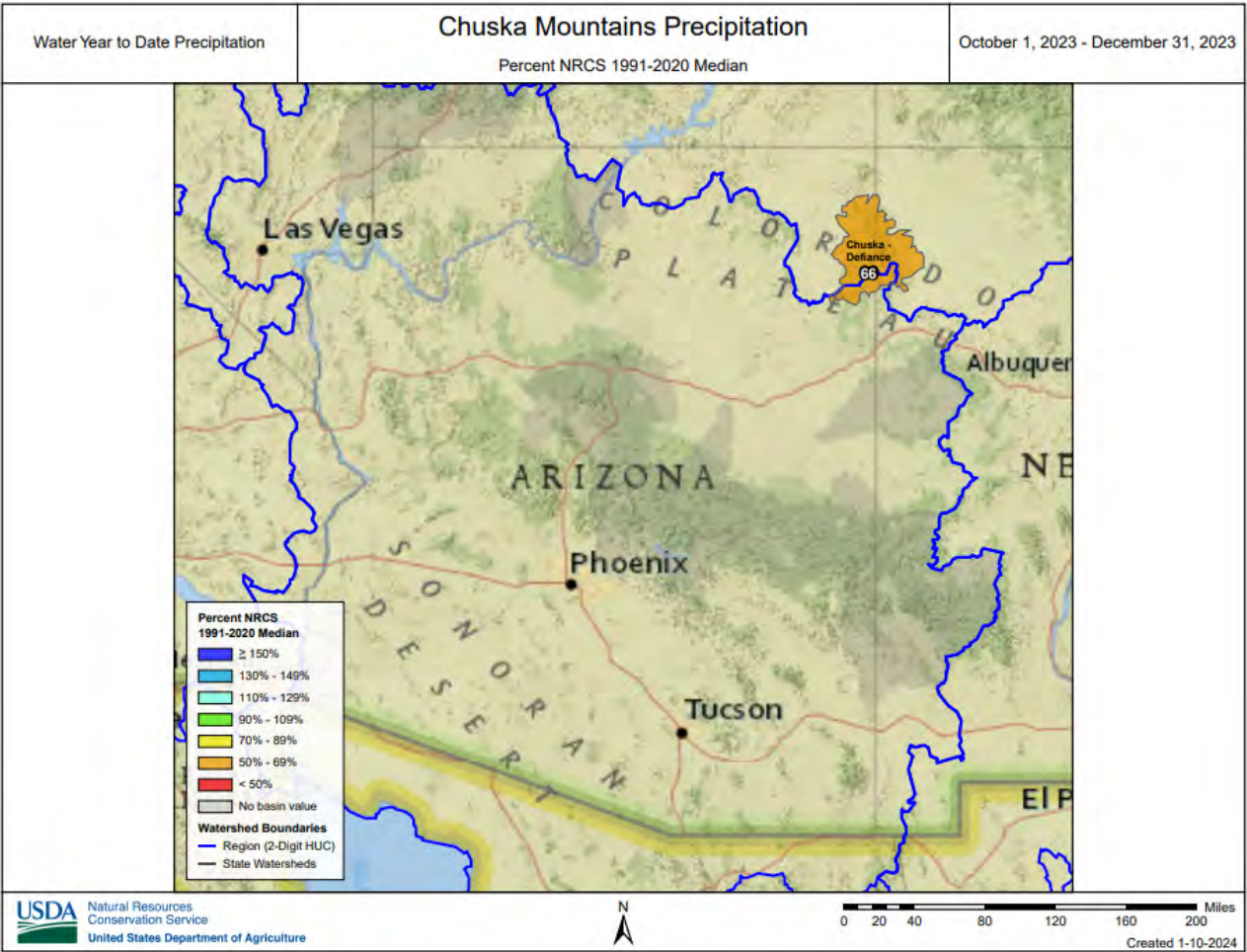
Reservoir Storage End of December, 2023	Current (KAF)	Last Year (KAF)	Median (KAF)	Capacity (KAF)
Lyman Reservoir	12.1	6.4	7.1	30.0
Cragin Dam Reservoir	7.9	4.5	7.4	15.0

Watershed Snowpack Analysis January 1, 2024	# of Sites	% Median	Last Year % Median
Little Colorado	22	41%	79%
Canyon Diablo	7	29%	98%
Chevelon Canyon	2	35%	86%
Little Colorado Headwaters	5	42%	31%
Zuni	3	185%	126%

CHUSKA MOUNTAINS as of January 1, 2024

Well above median streamflow levels are forecast for Wheatfields Creek, Captain Tom Wash, and Bowl Canyon Creek. Snow survey measurements conducted by staff of the Navajo Nation Water Management Branch show the Chuska snowpack to be at 90% of median.





Forecast Volume,
50% Exceedance Probability

Chuska Mountains Streamflow

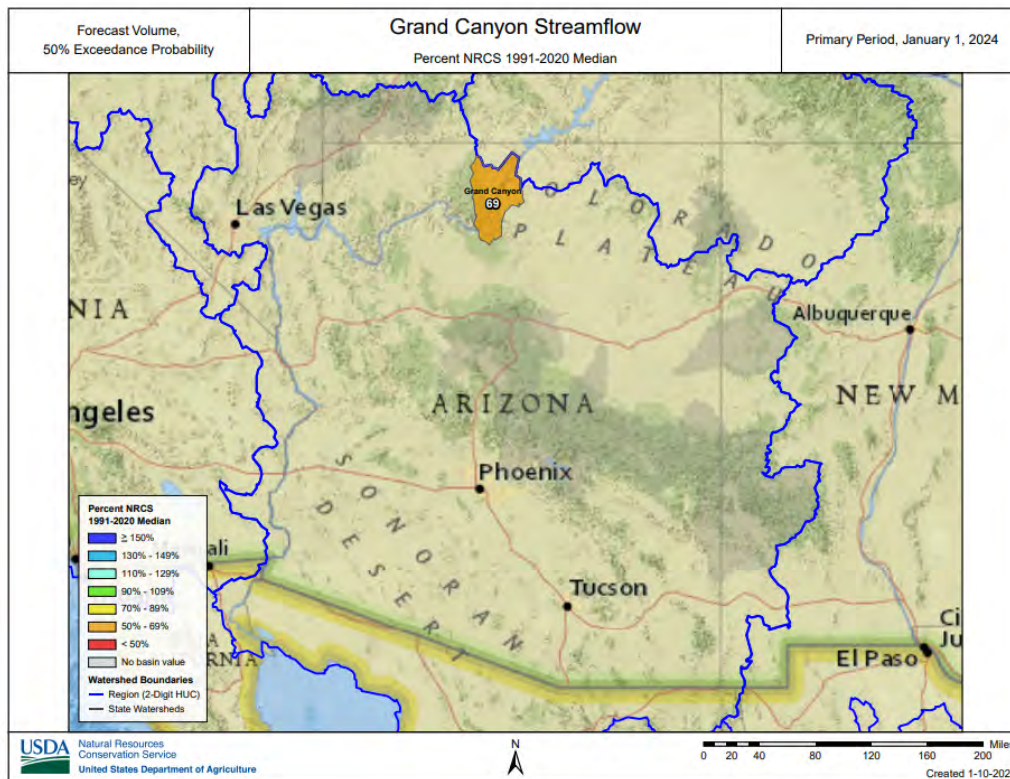
Primary Period, January 1, 2023

Percent NRCS 1991-2020 Median



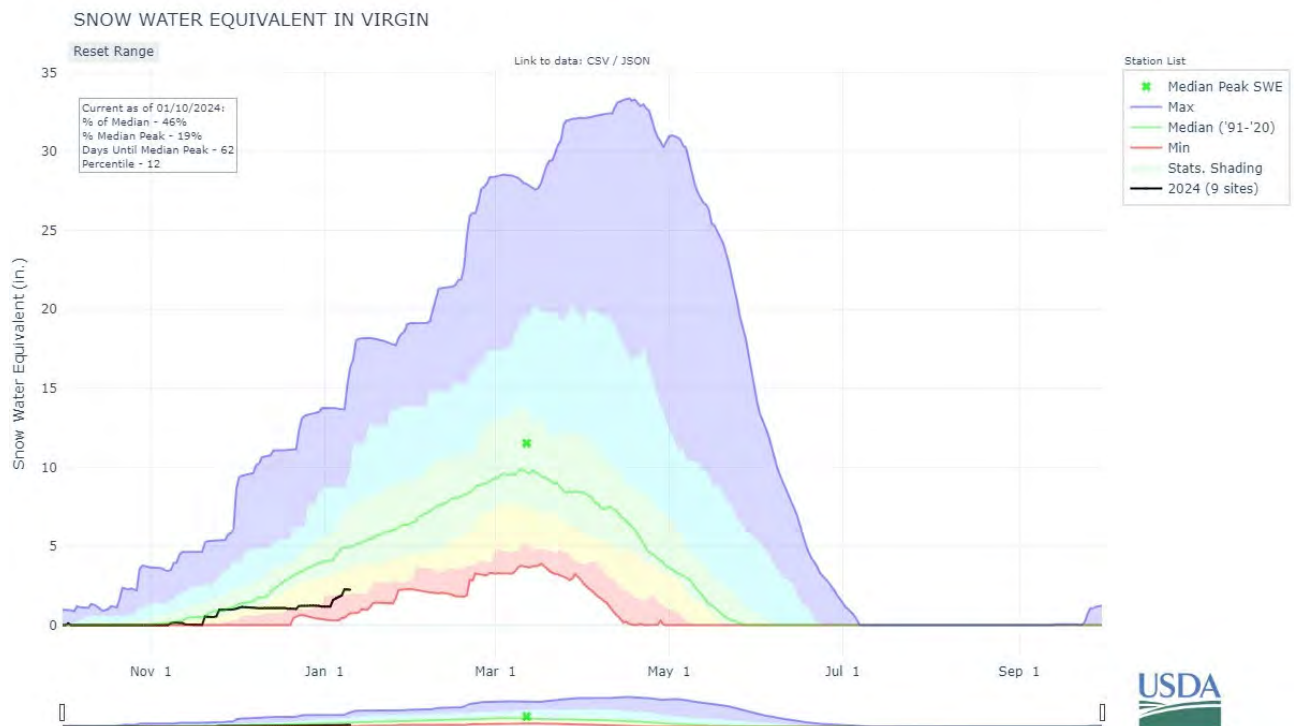
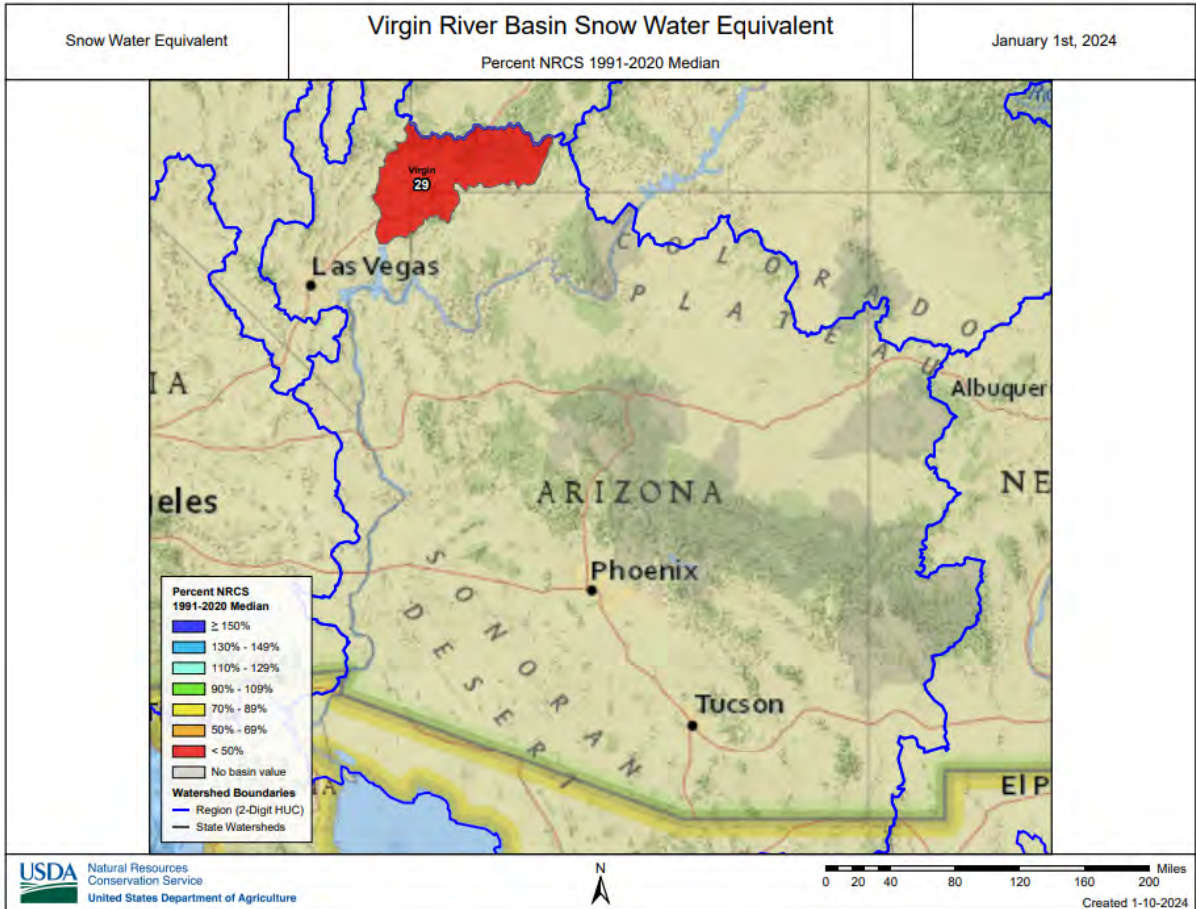
GRAND CANYON as of January 1, 2024

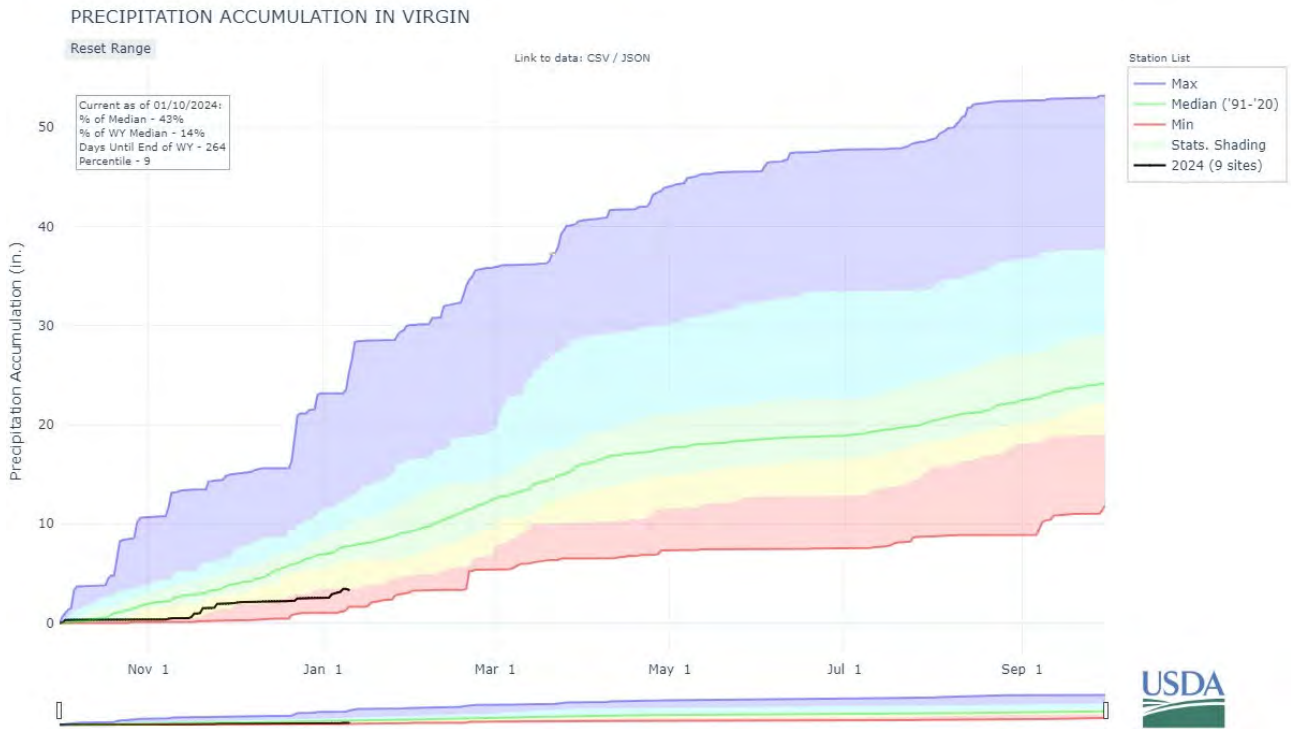
On the Colorado River, well below median inflow to Lake Powell is forecast at 69% of the 30-year median for the forecast period April-July. At the Grand Canyon, snow survey measurements completed by park rangers show snowpack to be at 32% of median.



VIRGIN RIVER BASIN as of January 1, 2024

Below median streamflow levels are forecast for the basin, ranging from 72% of median in the Virgin River at Virgin, to 73% of median in the Virgin River at Littlefield. Snow survey measurements show the snowpack for this basin to be at 28% of median.





Forecast Volume,
50% Exceedance Probability

Virgin River Basin Streamflow

Primary Period, January 1, 2024

Percent NRCS 1991-2020 Median



Basinwide Summary: January 1, 2024
 (Medians based On 1991-2020 reference period)

Snowpack Summary For January 1, 2024

Gila	Network	Elevation (ft)	Depth (in)	SWE (in)	Median (in)	% Median	Last Year SWE (in)	Last Year % Median
Beaver Head	SNOTEL	8076	5	1.9	2.0	95%	1.4	70%
Coronado Trail	SC	8350	10	1.3	0.5	260%		
Coronado Trail	SNOTEL	8418	8	1.6	1.4	114%	0.8	57%
Frisco Divide	SNOTEL	8013	4	1.1	1.3	85%	0.7	54%
Hannagan Meadows	SNOTEL	9027	12	3.1	4.8	65%	2.5	52%
Lookout Mountain	SNOTEL	8509	4	1.1	1.2	92%	0.2	17%
Nutrioso	SC	8500	6	0.8	0.2	400%		
Nutrioso	SNOTEL	8571	3	1.2	0.8	150%	0.1	13%
Signal Peak	SNOTEL	8405	1	0.3	1.6	19%	0.8	50%
Silver Creek Divide	SNOTEL	9096	15	4.3	3.1	139%	2.7	87%
State Line	SC	8000	9	1.2	0.7	171%	0.5	71%
Basin Index						93%		57%
# of sites						9		9

San Francisco	Network	Elevation (ft)	Depth (in)	SWE (in)	Median (in)	% Median	Last Year SWE (in)	Last Year % Median
Beaver Head	SNOTEL	8076	5	1.9	2.0	95%	1.4	70%
Coronado Trail	SC	8350	10	1.3	0.5	260%		
Coronado Trail	SNOTEL	8418	8	1.6	1.4	114%	0.8	57%
Frisco Divide	SNOTEL	8013	4	1.1	1.3	85%	0.7	54%
Hannagan Meadows	SNOTEL	9027	12	3.1	4.8	65%	2.5	52%
Nutrioso	SC	8500	6	0.8	0.2	400%		
Nutrioso	SNOTEL	8571	3	1.2	0.8	150%	0.1	13%
Silver Creek Divide	SNOTEL	9096	15	4.3	3.1	139%	2.7	87%
State Line	SC	8000	9	1.2	0.7	171%	0.5	71%
Basin Index						102%		62%
# of sites						7		7

Upper Gila	Network	Elevation (ft)	Depth (in)	SWE (in)	Median (in)	% Median	Last Year SWE (in)	Last Year % Median
Lookout Mountain	SNOTEL	8509	4	1.1	1.2	92%	0.2	17%
Signal Peak	SNOTEL	8405	1	0.3	1.6	19%	0.8	50%
Silver Creek Divide	SNOTEL	9096	15	4.3	3.1	139%	2.7	87%
Basin Index						97%		63%
# of sites						3		3

Salt	Network	Elevation (ft)	Depth (in)	SWE (in)	Median (in)	% Median	Last Year SWE (in)	Last Year % Median
Baldy	SNOTEL	9221	5	0.6	3.2	19%	1.3	41%
Beaver Head	SNOTEL	8076	5	1.9	2.0	95%	1.4	70%
Buck Spring	SC	7400	0	0.0	1.0	0%		
Coronado Trail	SC	8350	10	1.3	0.5	260%		
Coronado Trail	SNOTEL	8418	8	1.6	1.4	114%	0.8	57%
Fort Apache	SC	9160	10	1.4	3.6	39%	1.2	33%
Hannagan Meadows	SNOTEL	9027	12	3.1	4.8	65%	2.5	52%
Hawley Lake	SNOTEL	8314	11	2.7			3.3	
Heber	SNOTEL	7654	5	1.1	1.6	69%	1.9	119%
Maverick Fork	SNOTEL	9220	5	1.4	3.9	36%	0.9	23%
Promontory	SNOTEL	7942	2	0.7	3.5	20%	2.5	71%
Wildcat	SNOTEL	7868	7	1.5	1.3	115%	1.2	92%
Workman Creek	SNOTEL	7032	0	0.0	1.8	0%	0.4	22%

Basin Index							49%	52%	
# of sites							10	10	
Central Mogollon Rim	Network	Elevation (ft)	Depth (in)	SWE (in)	Median (in)	% Median	Last Year SWE (in)	Last Year % Median	
Baker Butte	SNOTEL	7363	1	0.3	1.8	17%	2.3	128%	
Baker Butte No. 2	SC	7700	3	0.7	2.8	25%	2.6	93%	
Baker Butte Smt	SNOTEL	7752		1.5	4.9	31%	4.4	90%	
Happy Jack	SC	7630	0	0.0	1.2	0%	2.1	175%	
Happy Jack	SNOTEL	7539	0	0.0	2.3	0%	4.0	174%	
Heber	SNOTEL	7654	5	1.1	1.6	69%	1.9	119%	
Promontory	SNOTEL	7942	2	0.7	3.5	20%	2.5	71%	
Workman Creek	SNOTEL	7032	0	0.0	1.8	0%	0.4	22%	
Basin Index							22%	102%	
# of sites							8	8	
Upper Salt	Network	Elevation (ft)	Depth (in)	SWE (in)	Median (in)	% Median	Last Year SWE (in)	Last Year % Median	
Baldy	SNOTEL	9221	5	0.6	3.2	19%	1.3	41%	
Beaver Head	SNOTEL	8076	5	1.9	2.0	95%	1.4	70%	
Buck Spring	SC	7400	0	0.0	1.0	0%			
Coronado Trail	SC	8350	10	1.3	0.5	260%			
Coronado Trail	SNOTEL	8418	8	1.6	1.4	114%	0.8	57%	
Fort Apache	SC	9160	10	1.4	3.6	39%	1.2	33%	
Hannagan Meadows	SNOTEL	9027	12	3.1	4.8	65%	2.5	52%	
Hawley Lake	SNOTEL	8314	11	2.7			3.3		
Maverick Fork	SNOTEL	9220	5	1.4	3.9	36%	0.9	23%	
Wildcat	SNOTEL	7868	7	1.5	1.3	115%	1.2	92%	
Basin Index							57%	46%	
# of sites							7	7	
Verde	Network	Elevation (ft)	Depth (in)	SWE (in)	Median (in)	% Median	Last Year SWE (in)	Last Year % Median	
Baker Butte	SNOTEL	7363	1	0.3	1.8	17%	2.3	128%	
Baker Butte No. 2	SC	7700	3	0.7	2.8	25%	2.6	93%	
Baker Butte Smt	SNOTEL	7752		1.5	4.9	31%	4.4	90%	
Bar M	SNOTEL	6397	0	0.0			1.9		
Chalender	SC	7100	0	0.0	0.6	0%	1.4	233%	
Chalender	SNOTEL	7035	0	0.0	1.2	0%	2.3	192%	
Fort Valley	SNOTEL	7371	0	0.0	1.0	0%	1.5	150%	
Fort Valley	SC	7350	0	0.0	0.8	0%	1.5	188%	
Fry	SNOTEL	7236	0	0.0	2.8	0%	3.8	136%	
Happy Jack	SC	7630	0	0.0	1.2	0%	2.1	175%	
Happy Jack	SNOTEL	7539	0	0.0	2.3	0%	4.0	174%	
Mormon Mountain	SNOTEL	7500	0	0.0	2.0	0%	3.4	170%	
Mormon Mountain Summit #2	SC	8470			4.2				
Mormon Mtn Summit	SNOTEL	8462	4	1.1	4.3	26%	3.3	77%	
Newman Park	SC	6750	0	0.0	0.9	0%	2.8	311%	
Snow Bowl #2	SC	11200	12	1.6	7.1	23%	4.2	59%	
White Horse Lake	SNOTEL	7203	0	0.0	1.4	0%	1.9	136%	
Williams Ski Run	SC	7720			2.7		1.6	59%	
Basin Index							15%	118%	
# of sites							15	15	
Upper Verde	Network	Elevation (ft)	Depth (in)	SWE (in)	Median (in)	% Median	Last Year SWE (in)	Last Year % Median	
Bar M	SNOTEL	6397	0	0.0			1.9		

Chalender	SNOTEL	7035	0	0.0	1.2	0%	2.3	192%
Chalender	SC	7100	0	0.0	0.6	0%	1.4	233%
Fort Valley	SNOTEL	7371	0	0.0	1.0	0%	1.5	150%
Fort Valley	SC	7350	0	0.0	0.8	0%	1.5	188%
Fry	SNOTEL	7236	0	0.0	2.8	0%	3.8	136%
Happy Jack	SC	7630	0	0.0	1.2	0%	2.1	175%
Happy Jack	SNOTEL	7539	0	0.0	2.3	0%	4.0	174%
Mormon Mountain	SNOTEL	7500	0	0.0	2.0	0%	3.4	170%
Mormon Mountain Summit #2	SC	8470			4.2			
Mormon Mtn Summit	SNOTEL	8462	4	1.1	4.3	26%	3.3	77%
Newman Park	SC	6750	0	0.0	0.9	0%	2.8	311%
Snow Bowl #2	SC	11200	12	1.6	7.1	23%	4.2	59%
White Horse Lake	SNOTEL	7203	0	0.0	1.4	0%	1.9	136%
Williams Ski Run	SC	7720			2.7		1.6	59%

Basin Index							11%	126%
# of sites							12	12

Little Colorado	Network	Elevation (ft)	Depth (in)	SWE (in)	Median (in)	% Median	Last Year SWE (in)	Last Year % Median
Baker Butte	SNOTEL	7363	1	0.3	1.8	17%	2.3	128%
Baker Butte No. 2	SC	7700	3	0.7	2.8	25%	2.6	93%
Baker Butte Smt	SNOTEL	7752		1.5	4.9	31%	4.4	90%
Baldy	SNOTEL	9221	5	0.6	3.2	19%	1.3	41%
Boon	SC	8140	9	2.6	1.2	217%	1.2	100%
Bowl Canyon	SC	8980	18	3.8	3.4	112%		
Buck Spring	SC	7400	0	0.0	1.0	0%		
Cheese Springs	SC	8700	6	1.2	2.2	55%	0.8	36%
Dan Valley	SC	7640	6	1.4	0.7	200%	1.0	143%
Fluted Rock	SC	7800	6	1.4	0.9	156%	0.3	33%
Fort Apache	SC	9160	10	1.4	3.6	39%	1.2	33%
Fort Valley	SNOTEL	7371	0	0.0	1.0	0%	1.5	150%
Fort Valley	SC	7350	0	0.0	0.8	0%	1.5	188%
Grand Canyon	SC	7500			0.5		0.5	100%
Heber	SNOTEL	7654	5	1.1	1.6	69%	1.9	119%
Lake Mary	SC	6930	0	0.0	1.2	0%	1.2	100%
Maverick Fork	SNOTEL	9220	5	1.4	3.9	36%	0.9	23%
Mcgaffey	SC	8120	4	1.0	0.8	125%	1.2	150%
Missionary Spring	SC	7940	0	0.0	1.1	0%	0.0	0%
Mormon Mountain	SNOTEL	7500	0	0.0	2.0	0%	3.4	170%
Mormon Mountain Summit #2	SC	8470			4.2			
Mormon Mtn Summit	SNOTEL	8462	4	1.1	4.3	26%	3.3	77%
Nutrioso	SNOTEL	8571	3	1.2	0.8	150%	0.1	13%
Nutrioso	SC	8500	6	0.8	0.2	400%		
Promontory	SNOTEL	7942	2	0.7	3.5	20%	2.5	71%
Snow Bowl #2	SC	11200	12	1.6	7.1	23%	4.2	59%
Snowslide Canyon	SNOTEL	9744	14	4.4	7.8	56%	8.5	109%

Basin Index							41%	79%
# of sites							22	22

Canyon Diablo	Network	Elevation (ft)	Depth (in)	SWE (in)	Median (in)	% Median	Last Year SWE (in)	Last Year % Median
Fort Valley	SNOTEL	7371	0	0.0	1.0	0%	1.5	150%
Fort Valley	SC	7350	0	0.0	0.8	0%	1.5	188%
Lake Mary	SC	6930	0	0.0	1.2	0%	1.2	100%
Mormon Mountain	SNOTEL	7500	0	0.0	2.0	0%	3.4	170%
Mormon Mountain Summit #2	SC	8470			4.2			
Mormon Mtn Summit	SNOTEL	8462	4	1.1	4.3	26%	3.3	77%

Snow Bowl #2	SC	11200	12	1.6	7.1	23%	4.2	59%
Snowslide Canyon	SNOTEL	9744	14	4.4	7.8	56%	8.5	109%
Basin Index						29%		98%
# of sites						7		7
Chevelon Canyon	Network	Elevation (ft)	Depth (in)	SWE (in)	Median (in)	% Median	Last Year SWE (in)	Last Year % Median
Heber	SNOTEL	7654	5	1.1	1.6	69%	1.9	119%
Promontory	SNOTEL	7942	2	0.7	3.5	20%	2.5	71%
Basin Index						35%		86%
# of sites						2		2
Little Colorado Headwaters	Network	Elevation (ft)	Depth (in)	SWE (in)	Median (in)	% Median	Last Year SWE (in)	Last Year % Median
Baldy	SNOTEL	9221	5	0.6	3.2	19%	1.3	41%
Cheese Springs	SC	8700	6	1.2	2.2	55%	0.8	36%
Fort Apache	SC	9160	10	1.4	3.6	39%	1.2	33%
Maverick Fork	SNOTEL	9220	5	1.4	3.9	36%	0.9	23%
Nutrioso	SC	8500	6	0.8	0.2	400%		
Nutrioso	SNOTEL	8571	3	1.2	0.8	150%	0.1	13%
Basin Index						42%		31%
# of sites						5		5
Zuni	Network	Elevation (ft)	Depth (in)	SWE (in)	Median (in)	% Median	Last Year SWE (in)	Last Year % Median
Boon	SC	8140	9	2.6	1.2	217%	1.2	100%
Dan Valley	SC	7640	6	1.4	0.7	200%	1.0	143%
Mcgaffey	SC	8120	4	1.0	0.8	125%	1.2	150%
Basin Index						185%		126%
# of sites						3		3
Lower Colorado Mainstem	Network	Elevation (ft)	Depth (in)	SWE (in)	Median (in)	% Median	Last Year SWE (in)	Last Year % Median
Bright Angel	SC	8400	3	0.9	2.8	32%	3.7	132%
Chalender	SNOTEL	7035	0	0.0	1.2	0%	2.3	192%
Chalender	SC	7100	0	0.0	0.6	0%	1.4	233%
Gardner Peak	SNOTEL	8322	7	2.3	4.8	48%	4.1	85%
Grand Canyon	SC	7500			0.5		0.5	100%
Gutz Peak	SNOTEL	6763	0	0.0	3.6	0%	2.6	72%
Harris Flat	SNOTEL	7792	1	0.3	2.4	13%	3.9	163%
Kolob	SNOTEL	9263	12	2.4	7.4	32%	11.0	149%
Little Grassy	SNOTEL	6065	0	0.0	1.3	0%	0.6	46%
Long Flat	SNOTEL	7982	0	0.0	2.6	0%	3.5	135%
Long Valley Jct	SNOTEL	7465	0	0.0	2.2	0%	3.3	150%
Midway Valley	SNOTEL	9827	16	3.5	8.0	44%	13.5	169%
Webster Flat	SNOTEL	9203	6	2.1	3.8	55%	6.6	174%
Williams Ski Run	SC	7720			2.7		1.6	59%
Basin Index						28%		139%
# of sites						12		12
Grand Canyon	Network	Elevation (ft)	Depth (in)	SWE (in)	Median (in)	% Median	Last Year SWE (in)	Last Year % Median
Bright Angel	SC	8400	3	0.9	2.8	32%	3.7	132%
Grand Canyon	SC	7500			0.5		0.5	100%
Basin Index						32%		132%
# of sites						1		1

Virgin	Network	Elevation (ft)	Depth (in)	SWE (in)	Median (in)	% Median	Last Year SWE (in)	Last Year % Median
Gardner Peak	SNOTEL	8322	7	2.3	4.8	48%	4.1	85%
Gutz Peak	SNOTEL	6763	0	0.0	3.6	0%	2.6	72%
Harris Flat	SNOTEL	7792	1	0.3	2.4	13%	3.9	163%
Kolob	SNOTEL	9263	12	2.4	7.4	32%	11.0	149%
Little Grassy	SNOTEL	6065	0	0.0	1.3	0%	0.6	46%
Long Flat	SNOTEL	7982	0	0.0	2.6	0%	3.5	135%
Long Valley Jct	SNOTEL	7465	0	0.0	2.2	0%	3.3	150%
Midway Valley	SNOTEL	9827	16	3.5	8.0	44%	13.5	169%
Webster Flat	SNOTEL	9203	6	2.1	3.8	55%	6.6	174%
Basin Index						29%		136%
# of sites						9		9

Upper Colorado	Network	Elevation (ft)	Depth (in)	SWE (in)	Median (in)	% Median	Last Year SWE (in)	Last Year % Median
Agua Canyon	SNOTEL	8900	1	0.3	3.3	9%	4.5	136%
Arapaho Ridge	SNOTEL	10976	28	6.6	10.0	66%	11.2	112%
Arrow #2	SC	9668						
Battle Mountain	SNOTEL	7498	11	2.6	4.3	60%	8.1	188%
Bear River	SNOTEL	9112	13	3.6	4.6	78%	5.6	122%
Beartown	SNOTEL	11600	20	5.0	9.6	52%	8.6	90%
Beaver Ck Village	SNOTEL	8565	16	3.7	4.7	79%	7.2	153%
Beaver Spring	SNOTEL	9255	14	3.7	4.2	88%	5.1	121%
Beaver Spring	SC	9220	13	2.8	3.6	78%		
Berthoud Pass	SC	9700						
Berthoud Summit	SNOTEL	11314	31	6.6	7.4	89%	8.5	115%
Big Park	SC	8620						
Big Sandy Opening	SNOTEL	9080	20	4.2	6.0	70%	7.0	117%
Bison Lake	SNOTEL	10964	24	6.6	10.6	62%	14.7	139%
Black Flat-U.M. Ck	SNOTEL	9414	10	2.1	3.2	66%	5.8	181%
Black Mesa	SNOTEL	11564	23	5.5			10.7	
Blacks Fork Jct	SNOTEL	8869	10	3.4	3.2	106%	6.8	213%
Blind Bull Sum	SNOTEL	8650	24	6.2	9.6	65%	10.7	111%
Blue River	SC	10500						
Bowl Canyon	SC	8980	18	3.8	3.4	112%		
Brown Duck	SNOTEL	10574	13	3.1	6.8	46%	8.9	131%
Bryce Canyon	SC	8000						
Buck Flat	SNOTEL	9409	16	3.8	6.8	56%	9.8	144%
Buck Pasture	SNOTEL	9632	19	4.2			8.8	
Buckboard Flat	SNOTEL	8924	14	3.2			5.8	
Buckboard Flat	SC	8998						
Buffalo Park	SNOTEL	9249	16	3.4	5.6	61%	6.7	120%
Burro Mountain	SNOTEL	9317	16	4.1	6.0	68%	8.4	140%
Butte	SNOTEL	10200	22	5.5	5.5	100%	6.7	122%
Butterhill	SC	7880						
Camp Jackson	SNOTEL	8858	14	3.3	5.0	66%	5.6	112%
Cascade #2	SNOTEL	9012	11	3.2	4.3	74%	4.7	109%
Chapman Tunnel	SNOTEL	10100	20	5.6	7.0	80%	6.6	94%
Chepeta	SNOTEL	10499	10	1.8	5.5	33%	6.4	116%
Clayton Springs	SNOTEL	10049	10	1.4	5.1	27%	7.0	137%
Clear Creek #1	SNOTEL	8975	16	2.8	6.0	47%	10.3	172%
Cochetopa Pass	SC	10000						
Cochetopa Pass	SNOTEL	10061	7	1.1	2.1	52%	2.4	114%
Columbine	SNOTEL	9167	24	6.7	8.8	76%	11.4	130%
Columbine Lodge	SC	9160						

Columbine Pass	SNOTEL	9171	20	5.0	6.7	75%	12.4	185%
Columbus Basin	SNOTEL	10781	20	4.8	9.8	49%	7.5	77%
Copper Mountain	SNOTEL	10523	19	4.4	6.3	70%	7.2	114%
Corral	SNOTEL	8207	5	1.5			5.2	
Corral Creek	SC	9700						
Cottonwood Pass	SNOLITE	11681	26					
Crested Butte	SC	8920						
Crosho	SNOTEL	8973	18	4.0	4.9	82%	7.0	143%
Currant Creek	SNOTEL	7915	10	3.0	3.7	81%	7.3	197%
Daniels-Strawberry	SNOTEL	8008	15	3.4	5.6	61%	9.2	164%
Dills Camp	SNOTEL	9228	12	2.5	4.6	54%	7.0	152%
Divide Peak	SNOTEL	8730	21	4.9	7.6	64%	9.5	125%
Donkey Reservoir	SNOTEL	9799	10	1.4	2.7	52%	4.6	170%
Dry Lake	SNOTEL	8271	26	7.1	8.4	85%	14.5	173%
EF Blacks Fork GS	SNOTEL	9360	12	2.3	4.0	58%	8.2	205%
East Rim Divide	SNOTEL	7930	10	2.0	4.4	45%	5.0	114%
East Willow Creek	SNOTEL	8302	12	1.6	3.2	50%	4.7	147%
El Diente Peak	SNOTEL	10217	17	3.6	5.0	72%	5.5	110%
Elk River	SNOTEL	8739	20	5.2	7.0	74%	11.2	160%
Elkhart Park G.S.	SNOTEL	9400	13	2.7	5.8	47%	5.8	100%
Elkhead Divide	SNOTEL	8800	21	5.6			12.4	
Elliot Ridge	SNOTEL	10549	22	6.0	7.4	81%	14.4	195%
Fish Lake	SC	8818						
Fish Lake Utah	SNOTEL	8798	5	1.1	3.8	29%	4.1	108%
Five Points Lake	SNOTEL	10943	13	4.0	6.4	63%	8.9	139%
Fluted Rock	SC	7800	6	1.4	0.9	156%	0.3	33%
Fool Creek	SNOTEL	11156	19	6.0			8.4	
Fremont Pass	SNOTEL	11326	20	4.2	6.8	62%	6.1	90%
G.B.R.C. Meadows	SC	9780						
GBRC Meadows	SNOTEL	9858	20	5.2			11.0	
Gold Basin	SNOTEL	10076	23	5.3			12.2	
Gore Pass	SC	9400						
Granby	SC	8600						
Grizzly Peak	SNOTEL	11139	20	4.1	7.0	59%	8.3	119%
Gros Ventre Summit	SNOTEL	8750	17	3.0	6.3	48%	6.3	100%
Groundhog	SC	8940						
Gunsight Pass	SNOTEL	9820	18	4.1	6.0	68%	6.4	107%
Hagerman Tunnel	SC	11150						
Hams Fork	SNOTEL	7840	6	1.3	4.6	28%	6.0	130%
Haskins Creek	SC	8975						
Henrys Fork	SNOLITE	10182	12					
Hewinta	SNOTEL	9500	16	2.5	3.9	64%	5.6	144%
Hickerson Park	SNOTEL	9122	16	2.5	3.0	83%	4.5	150%
Hidden Valley	SC	8480	13	2.9	2.4	121%		
High Lonesome	SNOTEL	10638	28	6.6			10.2	
Hole-in-Rock	SNOTEL	9168	11	2.2	3.0	73%	3.4	113%
Huntington Horse	SNOTEL	9652	24	6.1			17.6	
Huntington-Horseshoe	SC	9657						
Idarado	SNOTEL	9812	16	2.9	5.5	53%	5.5	100%
Independence Pass	SC	10600			5.2			
Independence Pass	SNOTEL	10598	20	4.5	7.2	63%	6.8	94%
Indian Creek	SNOTEL	9425	25	6.0	10.0	60%	11.5	115%
Ironton Park	SC	9600						
Ivanhoe	SNOTEL	10541	24	6.2	5.9	105%	8.1	137%
Jones Pass	SNOTEL	10426	20	4.6	6.0	77%	7.0	117%
Jones Pass	SC	10400						
Kelley R.S.	SNOTEL	8180	17	4.3	6.0	72%	8.6	143%
Kendall R.S.	SNOTEL	7740	7	1.5	5.2	29%	5.7	110%

Keystone	SC	9960							
Kiln	SNOTEL	9624	19	4.6	4.8	96%	5.9	123%	
Kings Cabin	SNOTEL	8728	8	1.6	3.4	47%	6.4	188%	
Lake City	SC	10160							
Lake Irene	SC	10700							
Lake Irene	SNOTEL	10682	27	6.1	9.2	66%	11.4	124%	
Lakefork #1	SNOTEL	10128	10	2.7	5.4	50%	6.4	119%	
Lakefork #3	SNOTEL	8464	5	1.3	2.7	48%	3.8	141%	
Lakefork Basin	SNOTEL	10885	16	4.4	7.6	58%	11.3	149%	
Lapland	SC	9300							
Larsen Creek	SC	9020							
Larsen Creek	SNOTEL	9000	6	1.7	2.9	59%	4.6	159%	
Lasal Mountain	SNOTEL	9578	18	3.7	4.6	80%	8.6	187%	
Lasal Mountain-Lower	SC	8825							
Lasal Mountain-Lower	SNOTEL	8783	14	3.1			6.8		
Lemon Reservoir	SC	8700							
Little Snake River	SNOTEL	8928	28	7.2	10.4	69%	13.4	129%	
Lizard Head Pass	SNOTEL	10193	18	4.4	6.2	71%	6.6	106%	
Lone Cone	SNOTEL	9755	17	4.0	6.4	63%	8.4	131%	
Lonesome Beaver	SNOTEL	9410	4	1.2			2.9		
Loomis Park	SNOTEL	8240	15	3.4	6.6	52%	7.3	111%	
Lost Dog	SNOTEL	9327	24	6.6	8.8	75%	13.1	149%	
Lostman	SC	10626							
Lynx Pass	SNOTEL	8919	12	3.2	4.6	70%	6.4	139%	
Mammoth-Cottonwood	SNOTEL	8709	22	5.0	7.2	69%	12.9	179%	
Mancos	SNOTEL	10044	19	4.2	5.6	75%	5.2	93%	
Mc Clure Pass	SNOTEL	8774	18	4.7	6.6	71%	9.1	138%	
Mc Kenzie Gulch	SC	8500							
Mccoy Park	SNOTEL	9516	20	5.1	5.6	91%	8.2	146%	
Mesa Lakes	SC	10000							
Mesa Lakes	SNOTEL	10168	22	5.0	6.4	78%	7.2	113%	
Middle Fork Camp	SNOTEL	8969	18	3.7	4.9	76%	6.0	122%	
Middle Fork Campground	SC	9000							
Milner Pass	SC	9750							
Mineral Creek	SNOTEL	10046	18	3.8	6.0	63%	6.6	110%	
Missionary Spring	SC	7940	0	0.0	1.1	0%	0.0	0%	
Molas Lake	SNOTEL	10631	17	3.4	7.9	43%	7.6	96%	
Monarch Offshoot	SC	10500							
Mosby Mtn.	SNOTEL	9553	9	1.6	4.6	35%	6.7	146%	
Mt Baldy	SNOTEL	9524	21	5.8			14.6		
Mt Pennell	SNOTEL	9209	8	1.6			4.2		
Nast Lake	SC	8700							
Nast Lake	SNOTEL	8731	15	4.0	3.2	125%	5.4	169%	
Navajo Whiskey Ck	SNOTEL	9064	11	2.9	3.9	74%	5.5	141%	
New Fork Lake	SNOTEL	8340	10	2.3	4.6	50%	5.3	115%	
North Inlet Grand Lake	SC	9000							
North Lost Trail	SNOTEL	9219	24	6.4	6.0	107%	9.3	155%	
Old Battle	SNOTEL	9860	29	7.6	12.4	61%	14.2	115%	
Overland Res.	SNOTEL	9893	14	3.1	5.2	60%	5.8	112%	
Park Cone	SNOTEL	9621	16	3.9	4.0	98%	6.2	155%	
Park Cone	SC	9600							
Park Reservoir	SNOTEL	9987	26	6.8	9.5	72%	13.1	138%	
Phantom Valley	SNOTEL	9045	10	2.3	4.2	55%	4.6	110%	
Pocket Creek	SC	9350							
Pocket Creek	SNOTEL	9360					7.7		
Porphyry Creek	SC	10760							
Porphyry Creek	SNOTEL	10788	22	5.4	6.2	87%	8.1	131%	
Rabbit Ears	SNOTEL	9411	27	7.4	9.8	76%	14.1	144%	

Ranch Creek	SC	9400							
Red Mountain Pass	SNOTEL	11080	27	6.3	9.6	66%	9.9	103%	
Red Pine Ridge	SNOTEL	8988	12	2.5	5.2	48%	7.7	148%	
Rio Blanco	SC	8500							
Ripple Creek	SNOTEL	10350	31	8.0	10.2	78%	15.5	152%	
Rock Creek	SNOTEL	7886	4	1.5	2.9	52%	4.3	148%	
Rowdy Creek	SC	8300							
Sage Creek Basin	SNOTEL	7850	14	2.6	5.7	46%	8.2	144%	
Sandstone RS	SNOTEL	8152	20	4.8	5.0	96%	9.3	186%	
Sargents Mesa	SNOTEL	11499	12	2.3	4.2	55%	4.7	112%	
Schofield Pass	SNOTEL	10653	33	9.2	12.8	72%	15.2	119%	
Scotch Creek	SNOTEL	9195	14	3.3	4.2	79%	6.0	143%	
Seeley Creek	SNOTEL	9904	13	2.8	4.9	57%	10.0	204%	
Sharkstooth	SNOTEL	10747	21	4.4	7.4	59%	6.8	92%	
Shrine Pass	SC	10700							
Slumgullion	SNOTEL	11560	17	3.7	6.5	57%	4.8	74%	
Snake River	SC	10000							
Snider Basin	SNOTEL	8060	11	2.4	5.1	47%	5.6	110%	
Spirit Lk	SNOTEL	10235	12	2.8	5.1	55%	8.6	169%	
Spring Creek Divide	SNOTEL	9000	30	7.0	10.2	69%	11.1	109%	
Spud Mountain	SNOTEL	10674	22	5.5	10.4	53%	10.5	101%	
Steel Creek Park	SNOTEL	10158	16	4.6	6.1	75%	9.4	154%	
Stillwater Creek	SNOTEL	8880	6	2.0			4.5		
Strawberry Divide	SNOTEL	8123	16	4.2	5.6	75%	8.5	152%	
Stump Lakes	SNOTEL	11248	23	5.3	7.6	70%	7.3	96%	
Summit Ranch	SNOTEL	9371	14	3.1	4.5	69%	5.9	131%	
Sunflower Flat	SNOTEL	10018	5	1.1			4.7		
Telluride	SC	8800							
Tennessee Pass #2	SC	10280							
Timberline	SNOTEL	8736	6	1.4	3.8	37%	5.5	145%	
Tower	SNOTEL	10620	40	12.4	16.8	74%	20.6	123%	
Trapper Lake	SNOTEL	9759	19	5.2			5.3		
Trial Lake	SNOTEL	9992	25	5.7	8.4	68%	13.4	160%	
Trial Lake	SC	9953							
Triple Peak	SNOTEL	8500	27	6.1	8.8	69%	11.5	131%	
Trout Creek	SNOTEL	9518	10	2.1	3.2	66%	4.9	153%	
Trout Lake #2	SC	9780							
Tsaile Canyon #1	SC	8160	13	3.4	2.4	142%	2.4	100%	
Tsaile Canyon #3	SC	8920	14	2.9	3.8	76%	3.4	89%	
Upper Joes Valley	SNOTEL	8596	10	1.9			5.5		
Upper San Juan	SNOTEL	10140	28	6.7	11.8	57%	11.9	101%	
Upper San Juan	SC	10200							
Upper Taylor	SNOTEL	10717	18	4.4	5.6	79%	7.6	136%	
Vail Mountain	SNOTEL	10310	20	5.5	7.4	74%	10.0	135%	
Vallecito	SNOTEL	10782	24	5.0	6.2	81%	6.3	102%	
Vasquez	SC	9600							
Wager Gulch	SNOTEL	11132	13	2.7			3.6		
Weminuche Creek	SNOTEL	10749	26	5.8	7.6	76%	6.7	88%	
Whiskey Creek	SC	9050	14	2.5	3.4	74%			
Whiskey Park	SNOTEL	9020	30	8.4	9.8	86%	15.4	157%	
White River #1	SNOTEL	8641	14	3.2	4.6	70%	7.7	167%	
Widtsoe #3	SNOTEL	9640	8	1.5	4.2	36%	6.7	160%	
Wilbur Bench	SNOTEL	9171	10	2.4	4.0	60%	6.1	153%	
Willow Creek Pass	SC	9540							
Willow Creek Pass	SNOTEL	9523	21	5.1	5.8	88%	7.6	131%	
Wolf Creek Peak	SNOTEL	9796	24	4.4			13.2		
Wolf Creek Summit	SNOTEL	10957	30	7.7	14.5	53%	13.1	90%	
Wrigley Creek	SNOTEL	9327	10	1.8			5.4		

Wurtz Lower	SC	10690							
Yampa View	SC	8200							
Basin Index						66%	129%		
# of sites						134	134		
Chuska - Defiance	Network	Elevation (ft)	Depth (in)	SWE (in)	Median (in)	% Median	Last Year SWE (in)	Last Year % Median	
Beaver Spring	SNOTEL	9255	14	3.7	4.2	88%	5.1	121%	
Beaver Spring	SC	9220	13	2.8	3.6	78%			
Bowl Canyon	SC	8980	18	3.8	3.4	112%			
Fluted Rock	SC	7800	6	1.4	0.9	156%	0.3	33%	
Hidden Valley	SC	8480	13	2.9	2.4	121%			
Missionary Spring	SC	7940	0	0.0	1.1	0%	0.0	0%	
Navajo Whiskey Ck	SNOTEL	9064	11	2.9	3.9	74%	5.5	141%	
Tsaile Canyon #1	SC	8160	13	3.4	2.4	142%	2.4	100%	
Tsaile Canyon #3	SC	8920	14	2.9	3.8	76%	3.4	89%	
Whiskey Creek	SC	9050	14	2.5	3.4	74%			
Basin Index						88%	102%		
# of sites						6	6		