



State Specific Training Module for New Hampshire

Revised October 2023

Purpose of this Module

This module will provide some general information that TSPs need to conduct conservation planning in New Hampshire. This information is general in nature so the TSP may need to follow up with additional reading or training to make sure they have the knowledge, skill, licenses and certifications to conduct conservation planning in this state.

Review of New Hampshire Laws

New Hampshire requires that the competence of all professional engineers, foresters, soil scientists and wetland scientists be certified by the New Hampshire Joint Board of Licensure. Pesticide applicators and organic producers must be certified by the New Hampshire Dept. of Agriculture.

New Hampshire has reciprocal licensure agreements with several states which should be explored prior to practicing in New Hampshire.

Certifications are the responsibility of the TSP and should be current.

Practices Requiring a License

Practice #	New Practice Name	Federal/State Law Citation	Requirements
309	Agrichemical Handling Facility	Professional Engineer (PE)	Professional Licensure in NH
311	Alley Cropping		
313	Waste Storage Facility	Professional Engineer (PE)	Professional Licensure in NH
314	Brush Management		
315	Herbaceous Weed Control		
316	Animal Mortality Facility	Professional Engineer (PE)	Professional Licensure in NH
317	Composting Facility	Professional Engineer (PE)	Professional Licensure in NH
320	Irrigation Canal or Lateral	Professional Engineer (PE)	Professional Licensure in NH
327	Conservation Cover		
328	Conservation Crop Rotation		
329	Residue and Tillage Management, No-Till/Strip Till/Direct Seed		
330	Contour Farming		
331	Contour Orchard and Other Perennial Crops		
332	Contour Buffer Strips		
338	Prescribed Burning		
340	Cover Crop		
342	Critical Area Planting		
344	Residue Management, Seasonal		
345	Residue and Tillage Management, Mulch Till		
346	Residue and Tillage Management, Ridge Till		
350	Sediment Basin	Professional Engineer (PE)	Professional Licensure in NH
351	Water Well Decommissioning	Professional Engineer (PE)	Professional Licensure in NH
353	Monitoring Well	Professional Engineer (PE)	Professional Licensure in NH
355	Well Water Testing	Professional Engineer (PE)	Professional Licensure in NH
356	Dike	Professional Engineer (PE)	Professional Licensure in NH
359	Waste Treatment Lagoon	Professional Engineer (PE)	Professional Licensure in NH
360	Waste Facility Closure	Professional Engineer (PE)	Professional Licensure in NH
362	Diversion	Professional Engineer (PE)	Professional Licensure in NH
366	Anaerobic Digester	Professional Engineer (PE)	Professional Licensure in NH
367	Roofs and Covers	Professional Engineer (PE)	Professional Licensure in NH
372	Combustion System Improvement	Professional Engineer (PE)	Professional Licensure in NH
374	Farmstead Energy Improvement	Professional Engineer (PE)	Professional Licensure in NH
378	Pond	Professional Engineer (PE)	Professional Licensure in NH
379	Multi-Story Cropping		
380	Windbreak/Shelterbelt Establishment		
381	Silvopasture Establishment		
382	Fence		
384	Woody Residue Treatment		
386	Field Border		
388	Irrigation Field Ditch	Professional Engineer (PE)	Professional Licensure in NH
390	Riparian Herbaceous Cover		

Practice #	New Practice Name	Federal/State Law Citation	Requirements
391	Riparian Forest Buffer		
393	Filter Strip		
394	Firebreak		
395	Stream Habitat Improvement and Management		
396	Aquatic Organism Passage	Professional Engineer (PE)	Professional Licensure in NH
397	Aquaculture Ponds	Professional Engineer (PE)	Professional Licensure in NH
400	Bivalve Aquaculture Gear & Biofouling Control		
402	Dam	Professional Engineer (PE)	Professional Licensure in NH
410	Grade Stabilization Structure	Professional Engineer (PE)	Professional Licensure in NH
412	Grassed Waterway	Professional Engineer (PE)	Professional Licensure in NH
422	Hedgerow Planting		
428	Irrigation Ditch Lining	Professional Engineer (PE)	Professional Licensure in NH
430	Irrigation Pipeline	Professional Engineer (PE)	Professional Licensure in NH
436	Irrigation Reservoir	Professional Engineer (PE)	Professional Licensure in NH
441	Irrigation System, Microirrigation	Professional Engineer (PE)	Professional Licensure in NH
442	Irrigation System, Sprinkler	Professional Engineer (PE)	Professional Licensure in NH
443	Irrigation System, Surface and Subsurface	Professional Engineer (PE)	Professional Licensure in NH
447	Irrigation System, Tailwater Recovery	Professional Engineer (PE)	Professional Licensure in NH
449	Irrigation Water Management	Professional Engineer (PE)	Professional Licensure in NH
450	Anionic Polyacrylamide (PAM) Application		
453	Land Reclamation, Landslide Treatment	Professional Engineer (PE)	Professional Licensure in NH
455	Land Reclamation, Toxic Discharge Control	Professional Engineer (PE)	Professional Licensure in NH
457	Mine Shaft and Adit Closing	Professional Engineer (PE)	Professional Licensure in NH
460	Land Clearing	Professional Engineer (PE)	Professional Licensure in NH
464	Irrigation Land Leveling	Professional Engineer (PE)	Professional Licensure in NH
466	Land Smoothing	Professional Engineer (PE)	Professional Licensure in NH
468	Lined Waterway or Outlet	Professional Engineer (PE)	Professional Licensure in NH
472	Access Control		
482	Mole Drain	Professional Engineer (PE)	Professional Licensure in NH
484	Mulching		
490	Tree/Shrub Site Preparation	NH Forestry License	NH Forestry License
500	Obstruction Removal	Professional Engineer (PE)	Professional Licensure in NH
511	Forage Harvest Management		
512	Pasture and Hay Planting		
516	Livestock Pipeline	Professional Engineer (PE)	Professional Licensure in NH
528	Prescribed Grazing		
533	Pumping Plant	Professional Engineer (PE)	Professional Licensure in NH
543	Land Reconstruction, Abandoned Mined Land		

Practice #	New Practice Name	Federal/State Law Citation	Requirements
544	Land Reconstruction, Currently Mined Land		
548	Grazing Land Mechanical Treatment		
550	Range Planting		
554	Drainage Water Management	Professional Engineer (PE)	Professional Licensure in NH
558	Roof Runoff Structure	Professional Engineer (PE)	Professional Licensure in NH
560	Access Road	Professional Engineer (PE)	Professional Licensure in NH
561	Heavy Use Area Protection	Professional Engineer (PE)	Professional Licensure in NH
562	Recreation Area Improvement	Professional Engineer (PE)	Professional Licensure in NH
566	Recreation Land Grading and Shaping	Professional Engineer (PE)	Professional Licensure in NH
568	Trails and Walkways	Professional Engineer (PE)	Professional Licensure in NH
570	Stormwater Runoff Control	Professional Engineer (PE)	Professional Licensure in NH
574	Spring Development	Professional Engineer (PE)	Professional Licensure in NH
575	Animal Trails and Walkways	Professional Engineer (PE)	Professional Licensure in NH
578	Stream Crossing	Professional Engineer (PE)	Professional Licensure in NH
580	Streambank and Shoreline Protection	Professional Engineer (PE)	Professional Licensure in NH
582	Open Channel	Professional Engineer (PE)	Professional Licensure in NH
584	Channel Bed Stabilization	Professional Engineer (PE)	Professional Licensure in NH
585	Stripcropping		
587	Structure for Water Control	Professional Engineer (PE)	Professional Licensure in NH
590	Nutrient Management		
592	Feed Management		
595	Integrated Pest Management	NH Pesticide Applicator License	NH Pesticide Applicator License
600	Terrace	Professional Engineer (PE)	Professional Licensure in NH
606	Subsurface Drain	Professional Engineer (PE)	Professional Licensure in NH
607	Surface Drain, Field Ditch	Professional Engineer (PE)	Professional Licensure in NH
608	Surface Drain, Main or Lateral	Professional Engineer (PE)	Professional Licensure in NH
609	Surface Roughening		
612	Tree/Shrub Establishment		
614	Watering Facility	Professional Engineer (PE)	Professional Licensure in NH
620	Underground Outlet	Professional Engineer (PE)	Professional Licensure in NH
629	Waste Treatment (bio-filter)	Professional Engineer (PE)	Professional Licensure in NH
633	Waste Recycling		
634	Waste Transfer	Professional Engineer (PE)	Professional Licensure in NH
635	Vegetated Treatment Area	Professional Engineer (PE)	Professional Licensure in NH
636	Water Harvesting Catchment	Professional Engineer (PE)	Professional Licensure in NH
638	Water and Sediment Control Basin	Professional Engineer (PE)	Professional Licensure in NH
642	Water Well	Professional Engineer (PE) OR Professional Geologist (PG)	Professional Licensure in NH

Practice #	New Practice Name	Federal/State Law Citation	Requirements
643	Restoration and Management of Rare and Declining Habitats		
644	Wetland Wildlife Habitat Management		
645	Upland Wildlife Habitat Management		
647	Early Successional Habitat Development/Management		
650	Windbreak/Shelterbelt Renovation		
654	Road/Trail/Landing Closure and Treatment		
655	Forest Trails and Landings	NH Forestry License	NH Forestry License
656	Constructed Wetland	Professional Engineer (PE)	Professional Licensure in NH
657	Wetland Restoration	Professional Engineer (PE)	Professional Licensure in NH
658	Wetland Creation	Professional Engineer (PE)	Professional Licensure in NH
659	Wetland Enhancement	Professional Engineer (PE)	Professional Licensure in NH
660	Tree/Shrub Pruning		
666	Forest Stand Improvement	NH Forestry License	NH Forestry License
805	Amending Soil Properties with Lime		
810	Annual Forages for Grazing Systems		

Conservation Activities CPAs, DIAs, and CEMAs

Practice #	New Practice Name	Federal/State Law Citation	Requirements	Comments	Used in NH?
101	Comprehensive Nutrient Management Plan - DIA				Y
102	Comprehensive Nutrient Management Plan - CPA				Y
106	Forest Management Plan - CPA	NH Forestry License	NH Forestry License	http://www.nh.gov/jtboard/home.htm	Y
110	Grazing Management Plan - CPA				Y
114	Integrated Pest Management Plan - Written	Pesticide Applicator's License	Pesticide Applicator's License	http://www.nh.gov/jtboard/home.htm	Y
116	Soil Health Management Plan				Y
118	Irrigation Water Management Plan - Written				Y
120	Agricultural Energy Design - DIA	Professional Engineer (PE)	Professional Licensure in NH	Cannot accept out-of-state license	Y
138	Conservation Plan Supporting Organic Transition - CPA				Y
140	Transition to Organic Design - DIA				Y
144	Fish and Wildlife Habitat Design - DIA				Y
148	Pollinator Habitat Design - DIA				Y
157	Nutrient Management Design - DIA				Y
158	Feed Management Design - DIA				Y
159	Grazing Management Design - DIA				Y
161	Pest Management Conservation System Design - DIA				Y
162	Soil Health Management System Design - DIA				Y
163	Irrigation Water Management Design - DIA				Y
164	Improved Management of Drainage Water Design - DIA				Y
165	Forest Management Practice Design - DIA	NH Forestry License	NH Forestry License	http://www.nh.gov/jtboard/home.htm	Y
201	Edge-of-Field Water Quality Monitoring Data Collection and Evaluation - CEMA				Y
202	Edge-of-Field Water Quality Monitoring System Installation - CEMA				Y
206	Feed and Forage Analysis - CEMA				Y
207	Site Assessment and Soil Testing for Contaminants Activity - CEMA				Y
209	PFAS Testing in Water or Soil - CEMA				Y
216	Soil Health Testing - CEMA				Y
217	Soil and Source Testing for Nutrient Management - CEMA				Y
218	Carbon Sequestration and Greenhouse Gas Mitigation Assessment - CEMA				Y
219	Prescribed Grazing Conservation Evaluation and Monitoring - CEMA				Y
221	Soil Organic Carbon Stock Monitoring - CEMA				Y
222	Indigenous Stewardship Methods Evaluation - CEMA				Y
223	Forest Management Assessment - CEMA				Y
224	Aquifer Flow Test - CEMA				Y
226	Site Suitability and Feasibility for Waste Storage Facility - CEMA				Y
227	Evaluation of Existing Waste Storage Facility Components - CEMA				Y
228	Agricultural Energy Assessment - CEMA				Y
297	Feral Swine Damage Assessment - CEMA				Y

Review of New Hampshire FOTG Requirements

All NH NRCS practices standards may be found in the electronic Field Office Technical Guide:

<https://efotg.sc.egov.usda.gov/#/state/NH/documents>

New Hampshire's Important Resource Issues

- (1) Water Quality Degradation
- (2) Degraded Plant Condition
- (3) Inadequate Habitat for Fish and Wildlife
- (4) Soil Erosion
- (5) Soil Quality Degradation
- (6) Inefficient Energy Use
- (7) Livestock Production Limitation
- (8) Air Quality
- (9) Excess Water
- (10) Insufficient Water



Review of Important Resource Issues

Soil	Water	Animal	Plant	Air	+Human
Erosion: Forest & Cropland	Quality: Animal Waste	Habitat: New England Cottontail	Suitability	Quality	Landuse: Retention of Agricultural Land
Condition: Soil Health	Quantity: Irrigation Water Management	Management: Pasture	Condition	Condition	Capital
Deposition			Management		Labor
					Management Level: Assist entry level farmers
					Profitability
					Risk

Common Conservation Practices in New Hampshire by landuse

Farmstead	Cropland	Hayland	Pasture	Forestland	Wildlife
Heavy Use Area Protection	Cover Crop	Hayland Planting	Pasture Mgt	Timber Std Imp	Brush Mgt
Road Water Mgt	Reduce Tillage	Nutrient Mgmt	Stock Water	Forest Trails and Landing	Mast Tree Release
Underground Outlet	Nutrient Mgmt	No-till Seeding	Pipeline	Stream Crossing	Earley Successional Habitat
Fencing	High Tunnel	Waste Utilization	Fencing	Access Road	Woody Debris
Roofs and Covers	Irrigation Water Mgt		Animal Trails	Access Control	Conservation Cover

Forage Seedings

In New Hampshire the best time for establishing forages is late April to early May, or the last two weeks of August. April to May seedings take advantage of the moisture available in late spring, providing the location has well drained soil that accommodates field equipment at that time of year. Late summer seedings are better for wet sites since the soil is usually dry enough to work in August.

(‘Establishing Forage Seedings’,
University of New Hampshire
Cooperative Extension, 6/2009)

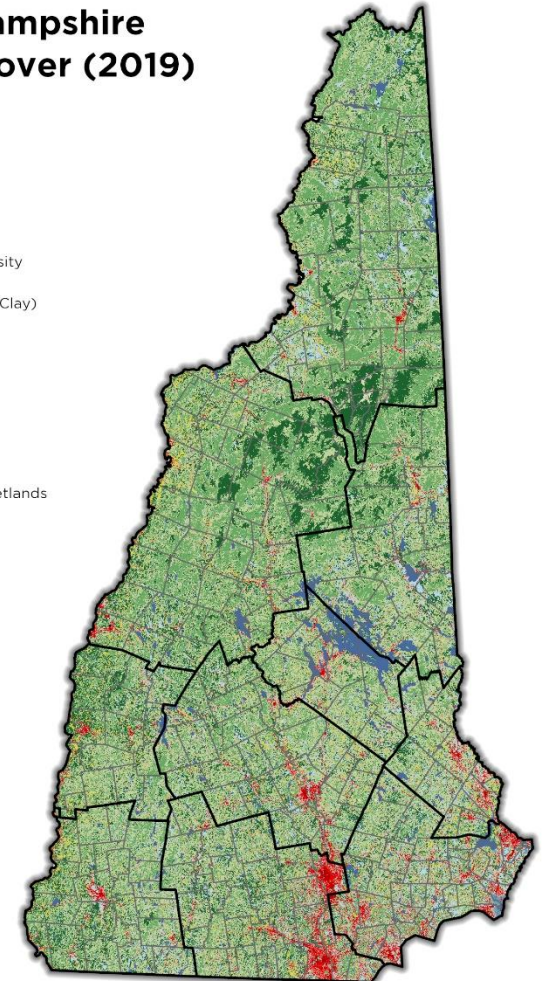
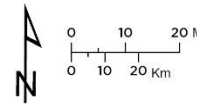


Review of Major Land Uses or Conservation Practices

Approximately 85% of New Hampshire is forested. Most of the forested land is managed by individuals. Conservation planning on forest land may include wildlife management practices as well as forestry practices.

New Hampshire agriculture is diverse including dairy, beef, other livestock, orchards, vegetable crops, and mixed operations creating a complex planning environment. Planning will include agronomic, management, and engineering practices on cropland, pastureland and farmsteads.

USDA New Hampshire Land Cover (2019)



Created By: Heather Grybas
NH/NRCS State Office
Date: 10/17/2023

Data Source: Multi-Resolution Land
Characteristics Consortium (U.S.),
National Land Cover Dataset

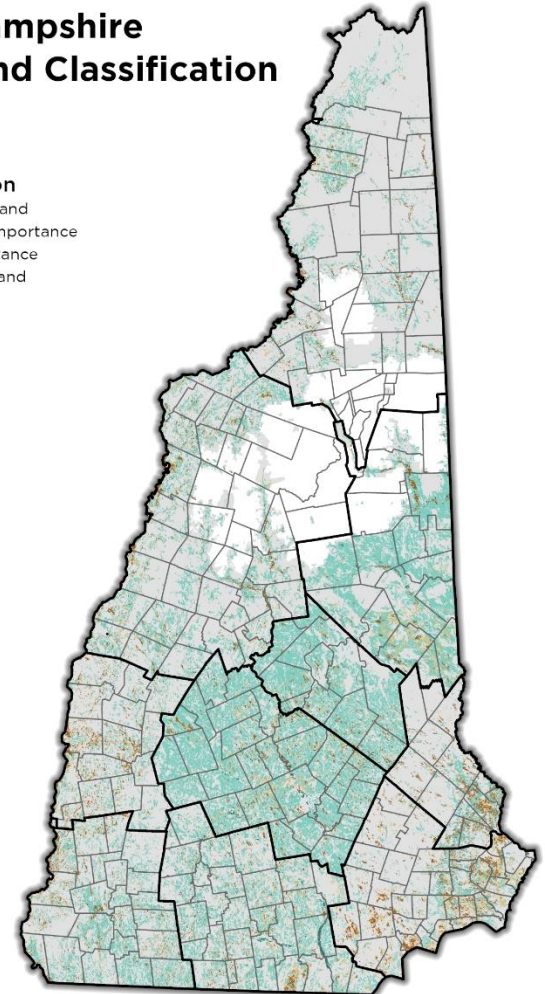
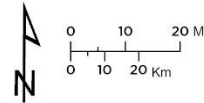
USDA is an equal opportunity provider, employer, and lender

Review of Major Land Ownership

New Hampshire's land is predominantly in private ownership with a growing number of acres with easement restrictions. Most farms and forestland are owned by families, LLCs and trusts. Timber management companies have significant holdings in Coos and Grafton County. The White Mountain National Forest covers ~600,000 acres in Grafton, Coos and Carroll County and participates in the drinking water initiative in these 3 counties.

USDA New Hampshire Farmland Classification

- County Boundary
- Town Boundary
- Farmland Classification**
- All areas are prime farmland
- Farmland of statewide importance
- Farmland of local importance
- Conditional Prime Farmland
- Not prime farmland
- Not Mapped By NRCS



Created By: Heather Grybas
NH NRCS State Office
Date: 10/17/2023

Data Source: USDA Natural
Resources Conservation Service
SSURGO Data

USDA is an equal opportunity provider, employer, and lender

New England Cottontail Focus Area

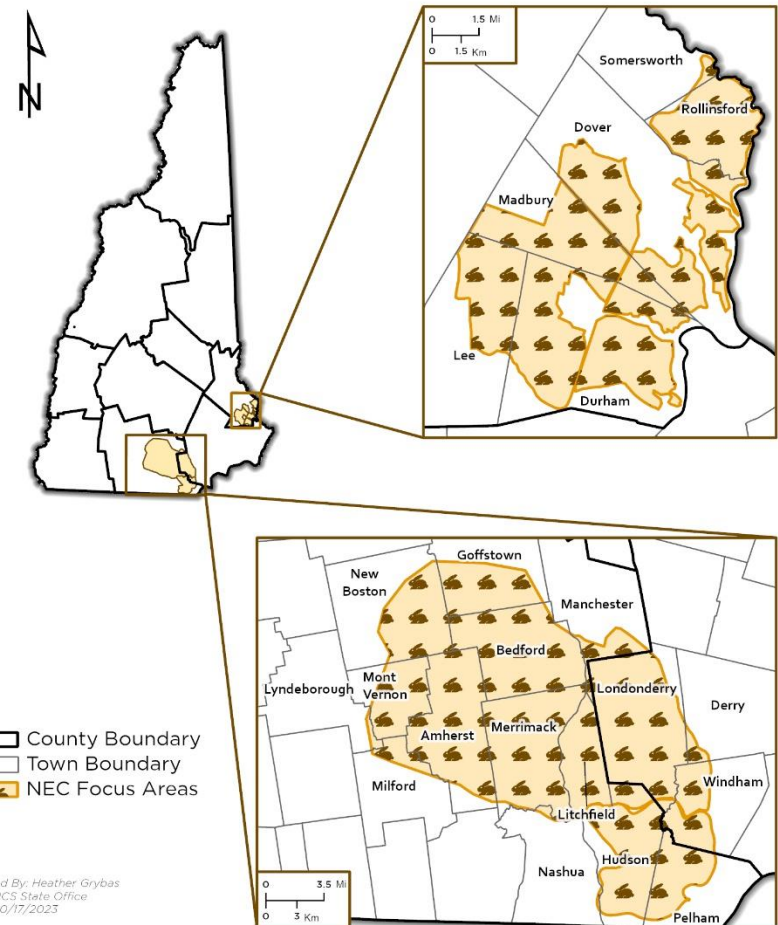
Core Practices

- 643 Restoration and Management of Rare and Declining Habitats
- 644 Wetland Wildlife Habitat Management
- 645 Upland Wildlife Habitat Management

Actions

- Brush management and/or herbaceous weed control to manage invasive plants.
- Reestablishment of native woody vegetation.
- Cutting trees and shrubs to encourage dense forest regeneration and rehabilitation of shrublands.
- Restoration of wetland seeps within priority areas.
- Increase connectivity of habitat in core areas.
- Development of Candidate Conservation Agreements with Assurances

USDA New Hampshire New England Cottontail Focus Areas



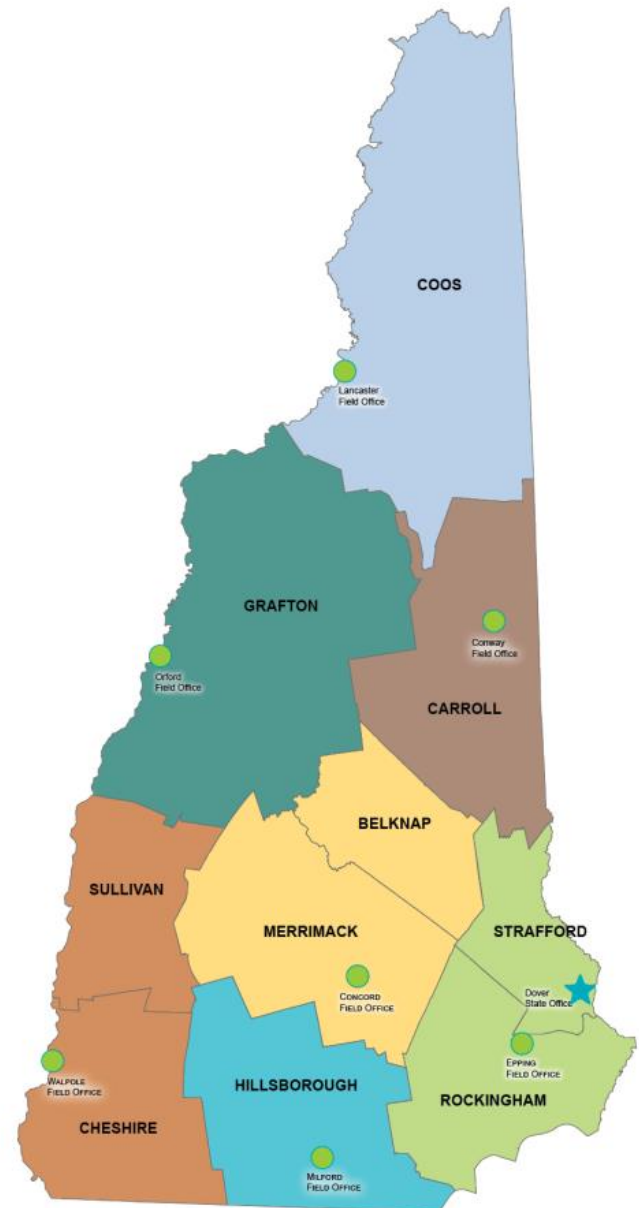
Created By: Heather Grybas
NH NRCS State Office
Date: 10/17/2023

Data Source: NH Department of Fish
and Game

USDA is an equal opportunity provider, employer, and lender

New Hampshire USDA, NRCS Coverage Map

*Note some offices cover multiple counties



Expected TSP Workflow

- The appropriate NH NRCS discipline lead (e.g. forester, biologist, agronomist, etc.) will be responsible for reviewing TSP conservation planning for the National Planner Certification.
- Subsequent conservation plans will be reviewed by the District Conservationist (DC) at the local USDA Service Center.
- The discipline leads/TSP Coordinator will conduct plan reviews for TSP planner certification renewals.
- TSPs will work with the local District Conservationist to make sure the proper environmental evaluations (NRCS-CPA-52) are completed.

NEPA Compliance (NRCS-CPA-52)

ENVIRONMENTAL EVALUATION WORKSHEET		A. Client Name:	
D. Client's Objective(s) (purpose):		B. Conservation Plan ID # (as applicable): Program Authority (optional):	
E. Need for Action:		C. Identification # (farm, tract, field #, etc. as required):	
H. Alternatives			
No Action		Alternative 1	
Alternative 2			
Resource Concerns			
<p>In Section "F" below, analyze, record, and address concerns identified through the Resources Inventory process (see FOTG Section 3 - Resource Concerns List and Planning Criteria for guidance). To integrate CART-Assessment Results into this worksheet, navigate to the "CART-Results" tab or press the designated button ("View CART-Results tab"). Follow the instructions in that page to complete the process.</p>			
F. Resource Concerns and Existing/Benchmark Conditions (Analyze and record the existing/benchmark conditions for each identified concern)	I. Effects of Alternatives		
	No Action	Alternative 1	Alternative 2
	Amount, Status, Description (Document both short and long term impacts)	Amount, Status, Description (Document both short and long term impacts)	Amount, Status, Description (Document both short and long term impacts)
	(if does NOT meet PC)	(if does NOT meet PC)	(if does NOT meet PC)
SOIL			
	<input type="checkbox"/>	<input type="checkbox"/>	<input type="checkbox"/>
	NOT meet PC	NOT meet PC	NOT meet PC
	<input type="checkbox"/>	<input type="checkbox"/>	<input type="checkbox"/>
	NOT meet PC	NOT meet PC	NOT meet PC
	<input type="checkbox"/>	<input type="checkbox"/>	<input type="checkbox"/>
	NOT meet PC	NOT meet PC	NOT meet PC
WATER			
	<input type="checkbox"/>	<input type="checkbox"/>	<input type="checkbox"/>
	NOT meet PC	NOT meet PC	NOT meet PC
	<input type="checkbox"/>	<input type="checkbox"/>	<input type="checkbox"/>
	NOT meet PC	NOT meet PC	NOT meet PC
	<input type="checkbox"/>	<input type="checkbox"/>	<input type="checkbox"/>
	NOT meet PC	NOT meet PC	NOT meet PC

Special Environmental Concerns: Environmental Laws, Executive Orders, Policies, etc.				
In Section "G" complete and attach Environmental Procedures Guide Sheets for documentation as applicable. Items with a "*" may require a federal permit or consultation/coordination between the lead agency and another government agency. In these cases, effects may need to be determined in consultation with another agency. Planning and practice implementation may proceed for practices not involved in consultation.				
G. Special Environmental Concerns (Document existing/benchmark conditions)	J. Impacts to Special Environmental Concerns			
	No Action (Document all impacts (Attach Guide Sheets as applicable))	Alternative 1 (Document all impacts (Attach Guide Sheets as applicable))	Alternative 2 (Document all impacts (Attach Guide Sheets as applicable))	
	<input type="checkbox"/>	<input type="checkbox"/>	<input type="checkbox"/>	<input type="checkbox"/>
*Clean Air Act Guide Sheet				
*Clean Water Act / Waters of the U.S. Guide Sheet				
*Coastal Zone Management Guide Sheet				
Coral Reefs Guide Sheet				
*Cultural Resources / Historic Properties Guide Sheet				
*Endangered and Threatened Species Guide Sheet				
Environmental Justice Guide Sheet				
*Essential Fish Habitat Guide Sheet				
Floodplain Management Guide Sheet				
Invasive Species Guide Sheet				
*Migratory Birds/Bald and Golden Eagle Protection Act Guide Sheet				
Natural Areas Guide Sheet				
Prime and Unique Farmlands Guide Sheet				
Riparian Area Guide Sheet				
Scenic Beauty Guide Sheet				
*Wetlands Guide Sheet				
*Wild and Scenic Rivers Guide Sheet				



NEPA Compliance (NRCS-CPA-52)

K. Other Agencies and Broad Public Concerns	No Action	Alternative 1	Alternative 2
Easements, Permits, Public Review, or Permits Required and Agencies Consulted.			
Cumulative Effects Narrative (Describe the cumulative impacts considered, including past, present and known future actions regardless of who performed the actions)			
L. Mitigation (Record actions to avoid, minimize, and compensate)			
M. Preferred Alternative			
Preferred alternative	<input type="checkbox"/>	<input type="checkbox"/>	<input type="checkbox"/>
Supporting reason			
N. Context (Record context of alternatives analysis) The significance of an action must be analyzed in several contexts such as society as a whole (human, national), the affected region, the affected interests, and the locality.			
O. To the best of my knowledge, the data shown on this form is accurate and complete: In the case where a non-NRCS person (e.g. a TSP) assists with planning they are to sign the first signature block and then NRCS is to sign the second block to verify the information's accuracy.			
Signature (TSP if applicable)	Title	Date	
Signature (NRCS)	Title	Date	
If preferred alternative is not a federal action where NRCS has control or responsibility and this NRCS-CPA-52 is shared with someone other than the client, then indicate to whom this is being provided.			
The following sections are to be completed by the Responsible Federal Official (RFO)			
NRCS is the RFO if the action is subject to NRCS control and responsibility (e.g., actions financed, funded, assisted, conducted, regulated, or approved by NRCS). These actions do not include situations in which NRCS is only providing technical assistance because NRCS cannot control what the client ultimately does with that assistance and situations where NRCS is making a technical determination (such as Farm Bill HEL or wetland determinations) not associated with the planning process.			
P. Determination of Significance or Extraordinary Circumstances To answer the questions below, consider the severity (intensity) of impacts in the contexts identified above. Impacts may be both beneficial and adverse. A significant effect may exist even if the Federal agency believes that on balance the effect will be beneficial. Significance cannot be avoided by terminating an action temporary or by breaking it down into small component parts.			
If you answer ANY of the below questions "yes" then contact the State Environmental Liaison as there may be extraordinary circumstances and significance issues to consider and a site specific NEPA analysis may be required.			
Yes	No		
<input type="checkbox"/>	<input type="checkbox"/>	• Is the preferred alternative expected to cause significant effects on public health or safety?	
<input type="checkbox"/>	<input type="checkbox"/>	• Is the preferred alternative expected to significantly affect unique characteristics of the geographic area such as proximity to historic or cultural resources, park lands, prime farmlands, wetlands, wild and scenic rivers, or ecologically critical areas?	
<input type="checkbox"/>	<input type="checkbox"/>	• Are the effects of the preferred alternative on the quality of the human environment likely to be highly controversial?	
<input type="checkbox"/>	<input type="checkbox"/>	• Does the preferred alternative have highly uncertain effects or involve unique or unknown risks on the human environment?	
<input type="checkbox"/>	<input type="checkbox"/>	• Does the preferred alternative establish a precedent for future actions with significant impacts or represent a decision in principle about a future consideration?	
<input type="checkbox"/>	<input type="checkbox"/>	• Is the preferred alternative known or reasonably expected to have potentially significant environment impacts to the quality of the human environment either individually or cumulatively over time?	
<input type="checkbox"/>	<input type="checkbox"/>	• Will the preferred alternative likely have a significant adverse effect on ANY of the special environmental concerns? Use the Evaluation Procedure Guide Sheets to assist in this determination. This includes, but is not limited to, concerns such as cultural or historical resources, endangered and threatened species, environmental justice, wetlands, floodplains, coastal zones, coral reefs, essential fish habitat, wild and scenic rivers, clean air, riparian areas, natural areas, and invasive	
<input type="checkbox"/>	<input type="checkbox"/>	• Will the preferred alternative threaten a violation of Federal, State, or local law or requirements for the protection of the environment?	

Q. NEPA Compliance Finding (check one)		Action required
The preferred alternative:		
<input type="checkbox"/>	1) is not a federal action where the agency has control or responsibility.	Document in "R.1" below. No additional analysis is required.
<input type="checkbox"/>	2) is a federal action ALL of which is categorically excluded from further environmental analysis AND there are no extraordinary circumstances as identified in Section "P".	Document in "R.2" below. No additional analysis is required.
<input type="checkbox"/>	3) is a federal action that has been sufficiently analyzed in an existing Agency state, regional, or national NEPA document and there are no predicted significant adverse environmental effects or extraordinary circumstances.	Document in "R.1" below. No additional analysis is required.
<input type="checkbox"/>	4) is a federal action that has been sufficiently analyzed in another Federal agency's NEPA document (EA or EIS) that addresses the proposed NRCS action and its effects and has been formally adopted by NRCS. NRCS is required to prepare and publish its own Finding of No Significant Impact for an EA or Record of Decision for an EIS when adopting another agency's EA or EIS document. (Note: This box is not applicable to FSA)	Contact the State Environmental Compliance Liaison for list of NEPA documents formally adopted and available for tiering. Document in "R.1" below. No additional analysis is required.
<input type="checkbox"/>	5) is a federal action that has NOT been sufficiently analyzed or may involve predicted significant adverse environmental effects or extraordinary circumstances and may require an EA or EIS.	Contact the State Environmental Compliance Liaison. Further NEPA analysis required. Explain in Notes Section.
R. Rationale Supporting the Finding		
R.1 Findings Documentation		
R.2 Applicable Categorical Exclusion(s) (more than one may apply)		
7 CFR Part 650 Compliance With NEPA - subpart 650.6 Categorical Exclusions states prior to determining that a proposed action is categorically excluded under paragraph (d) of this section, the proposed action must meet six sideboard criteria. See NECH 010.110.		
I have considered the effects of the alternatives on the Resource Concerns, Economic and Social Considerations, Special Environmental Concerns, and Extraordinary Circumstances as defined by Agency regulation and policy and based on that made the finding indicated above.		
S. Signature of Responsible Federal Official:		
Signature	Title	Date
Additional Notes		

New Hampshire Cultural Resource Review

New Hampshire Division of Historic Resources: <http://www.nh.gov/nhdhr/>



NH Natural Heritage Bureau

The NH Natural Heritage Bureau (NHB) keeps records of known locations of rare species and natural communities.

<https://www4.des.state.nh.us/nhb-datacheck/>



Additional References or Training

- State Field Office Technical Guide at <https://efotg.sc.egov.usda.gov/#/state/NH/documents>
- New Hampshire Statute CHAPTER 310-A for NH PE laws and rules (<https://www.oplc.nh.gov/board-professional-engineers-laws-and-rules>)
- Web Soil Survey: <http://websoilsurvey.nrcs.usda.gov/app/>

Non-Discrimination Statement

In accordance with Federal civil rights law and U.S. Department of Agriculture (USDA) civil rights regulations and policies, the USDA, its Agencies, offices, and employees, and institutions participating in or administering USDA programs are prohibited from discriminating based on race, color, national origin, religion, sex, gender identity (including gender expression), sexual orientation, disability, age, marital status, family/parental status, income derived from a public assistance program, political beliefs, or reprisal or retaliation for prior civil rights activity, in any program or activity conducted or funded by USDA (not all bases apply to all programs). Remedies and complaint filing deadlines vary by program or incident.

Persons with disabilities who require alternative means of communication for program information (e.g., Braille, large print, audiotope, American Sign Language, etc.) should contact the responsible Agency or USDA's TARGET Center at (202) 720-2600 (voice and TTY) or contact USDA through the Federal Relay Service at (800) 877-8339. Additionally, program information may be made available in languages other than English.

To file a program discrimination complaint, complete the USDA Program Discrimination Complaint Form, AD-3027, found online at [How to File a Program Discrimination Complaint](#) and at any USDA office or write a letter addressed to USDA and provide in the letter all of the information requested in the form. To request a copy of the complaint form, call (866) 632-9992. Submit your completed form or letter to USDA by: (1) mail: U.S. Department of Agriculture, Office of the Assistant Secretary for Civil Rights, 1400 Independence Avenue, SW, Washington, D.C. 20250-9410; (2) fax: (202) 690-7442; or (3) email: program.intake@usda.gov.

USDA is an equal opportunity provider, employer, and lender.

Certificate of Completion

After viewing the State Specific Training module, please print and sign the completion certificate on the following slide.

The certificate is your acknowledgement that based on the information provided in this module, you have the proper knowledge, skills and ability to conduct planning in this state.

Within your NRCS Registry profile, enter the training and upload the signed certificate to verify completion.

STATE SPECIFIC TRAINING MODULE COMPLETION CERTIFICATE

I, _____ hereby verify I have viewed and understand the content of the New Hampshire State
TSP Name
Specific Training Module and affirm I have the knowledge, skills, and ability to conduct conservation planning
services in this state.

TSP Signature

Date