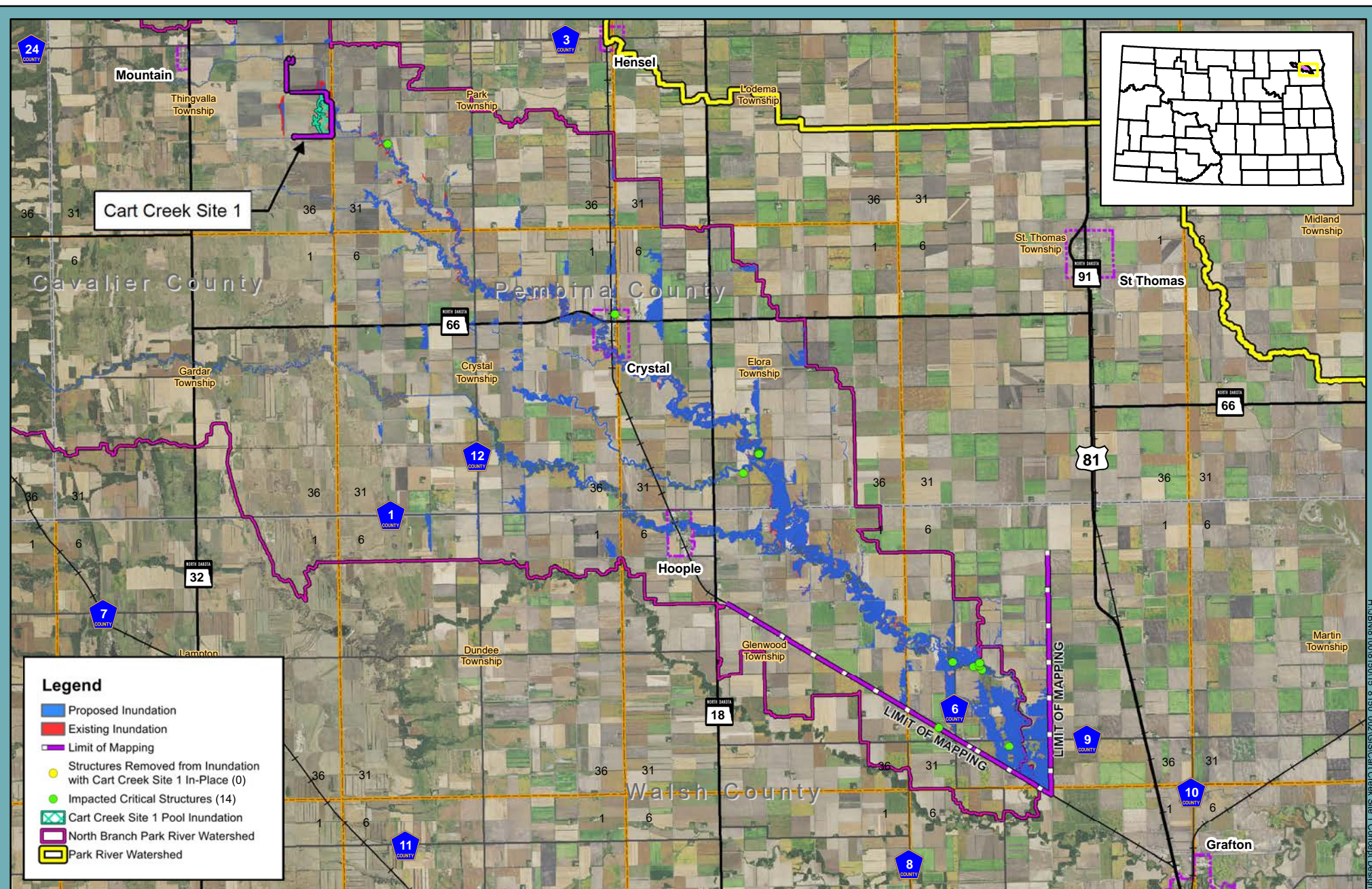


APPENDIX C

Support Maps

Figure C-1:	<i>Rainfall Inundation (2-year through 500-year)</i>
Figure C-2:	<i>Structures Impacted by Flooding, City of Crystal</i>
Figure C-3:	<i>Hydric Soils</i>
Figure C-4:	<i>Soil Erodibility Factor</i>
Figure C-5:	<i>USDA Farmland Classification</i>
Figure C-6:	<i>Visible Salinity</i>
Figure C-7:	<i>Suface Salinization Risk</i>
Figure C-8:	<i>Water Resources</i>
Figure C-9:	<i>Impaired Waters</i>
Figure C-10:	<i>USFWS National Wetland Inventory (NWI)</i>
Figure C-11:	<i>FEMA Floodplain</i>
Figure C-12:	<i>National Land Cover Database (NLCD 2011)</i>
Figure C-13:	<i>National Agricultural Statistic Service, Cropland Data (NASS 2017) Cart</i>
Figure C-14:	<i>Census Block Groups</i>
Figure C-15:	<i>Creek Site 1, Hydric Soils</i>
Figure C-16:	<i>Cart Creek Site 1, Soil Erodibility</i>
Figure C-17:	<i>Cart Creek Site 1, Wetlands</i>
Figure C-18:	<i>Alternative 2 - Wetland Impacts Map</i>
Figure C-19	<i>Cart Creek Site 1, National Land Cover Database (NLCD 2011)</i>
Figure C-20	<i>Cart Creek Site 1, National Agricultural Statistics Service, Cropland Data (NASS)</i>
Figure C-21	<i>Dam Breach Inundation</i>
Figure C-22	<i>Cart Creek Site 1 Drainage Area</i>
Figure C-23	<i>Project Location Map</i>



C-1.1

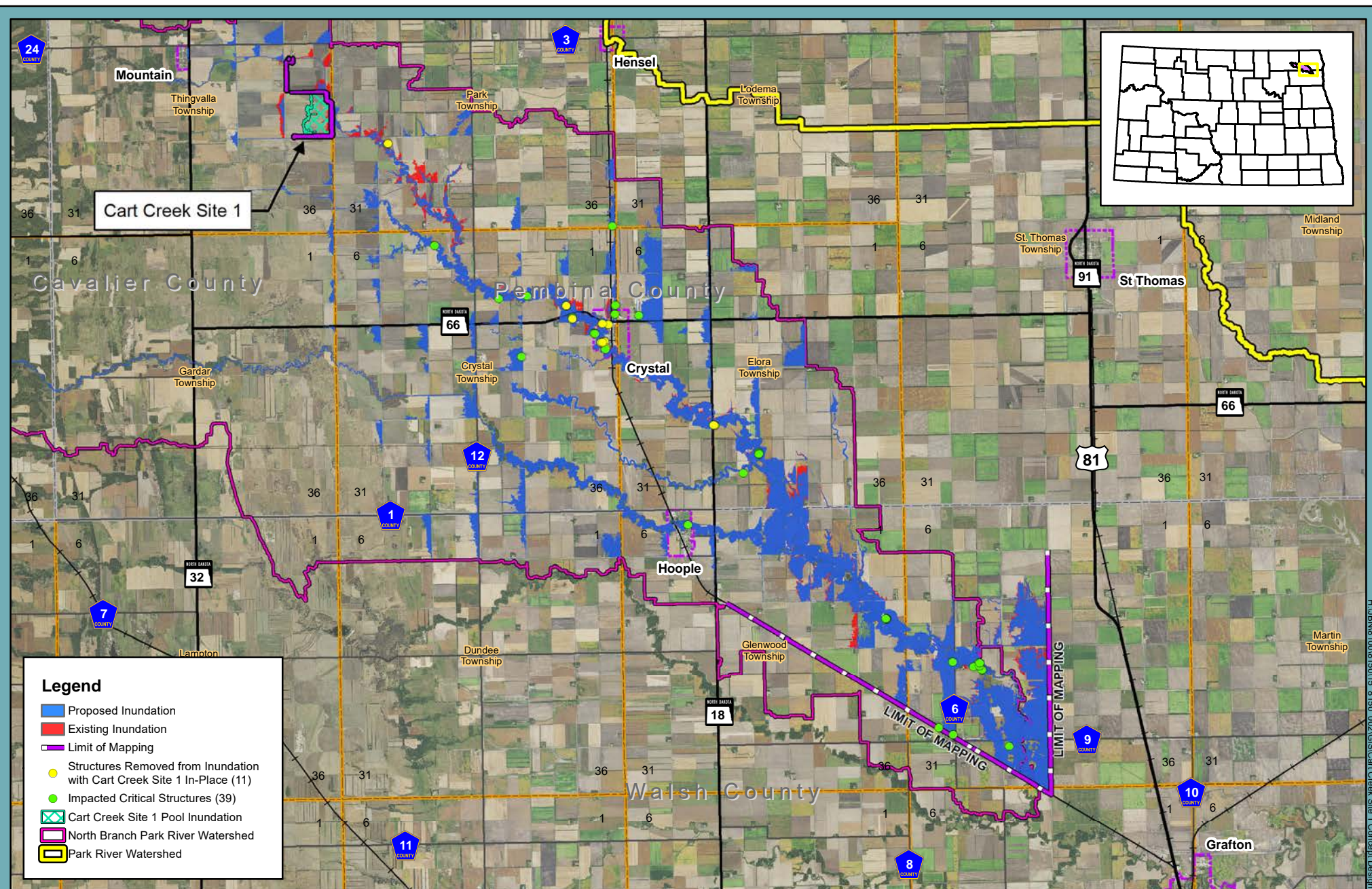
Figure C-1.1: 2-Year 4-Day Rainfall Inundation

North Branch Park River Watershed
 Cart Creek Site 1 Concept Design Report
 Park River Joint Water Resource District



0 1 2 4 Miles





C-1.3

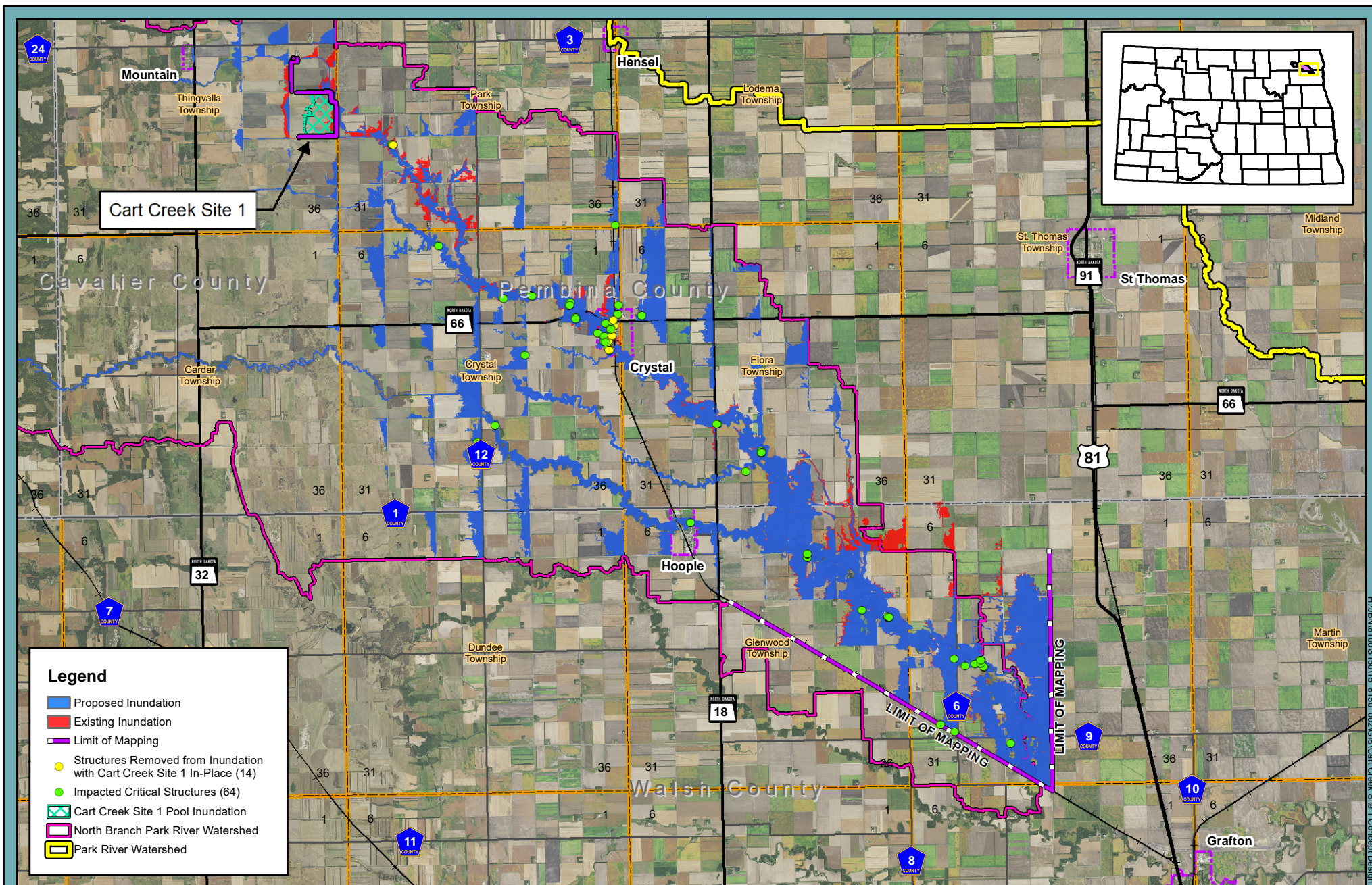
Figure C-1.3: 10-Year 4-Day Rainfall Inundation

North Branch Park River Watershed
 Cart Creek Site 1 Concept Design Report
 Park River Joint Water Resource District



0 1 2 4 Miles





C-1.4

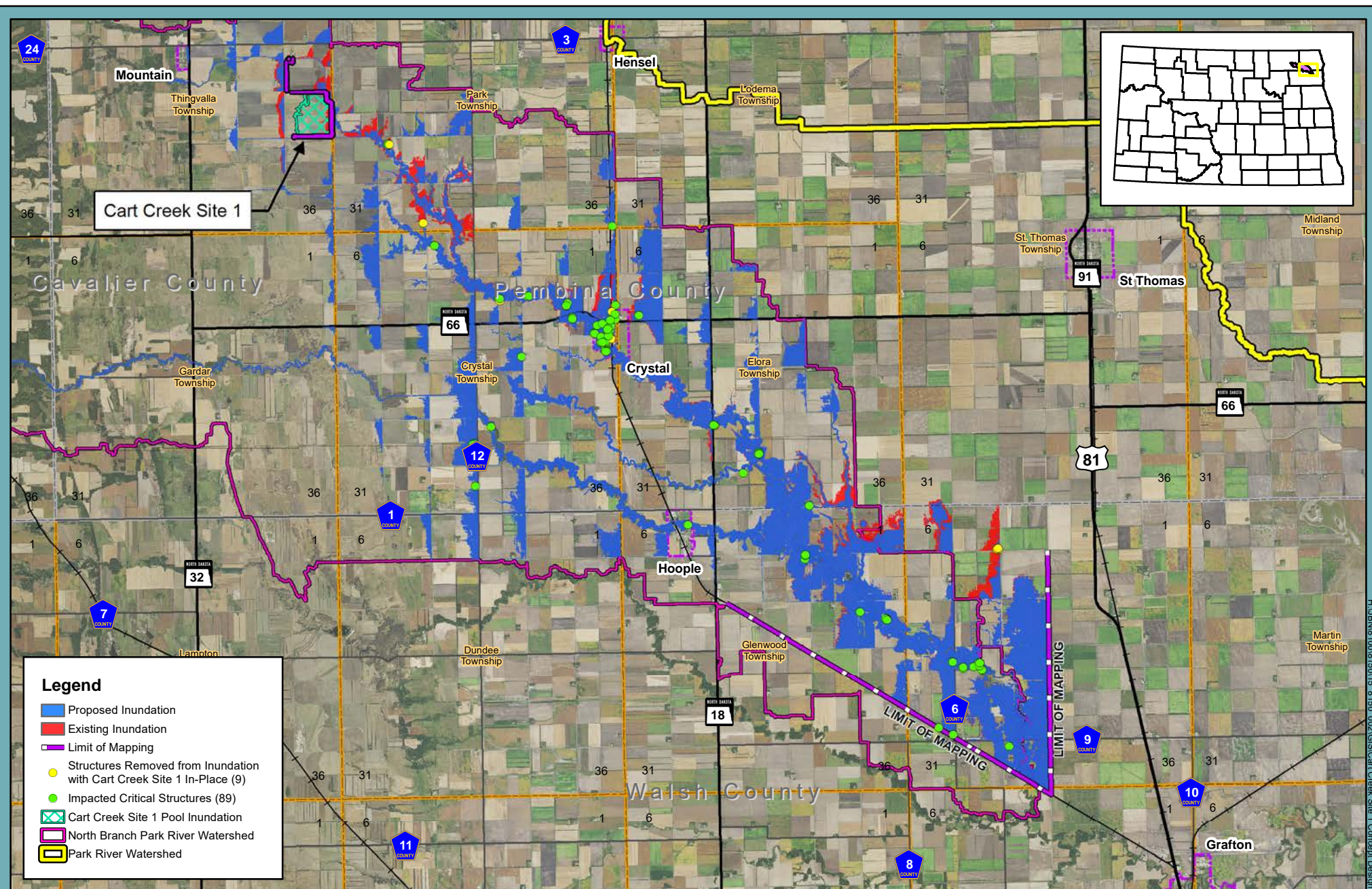
Figure C-1.4: 25-Year 4-Day Rainfall Inundation

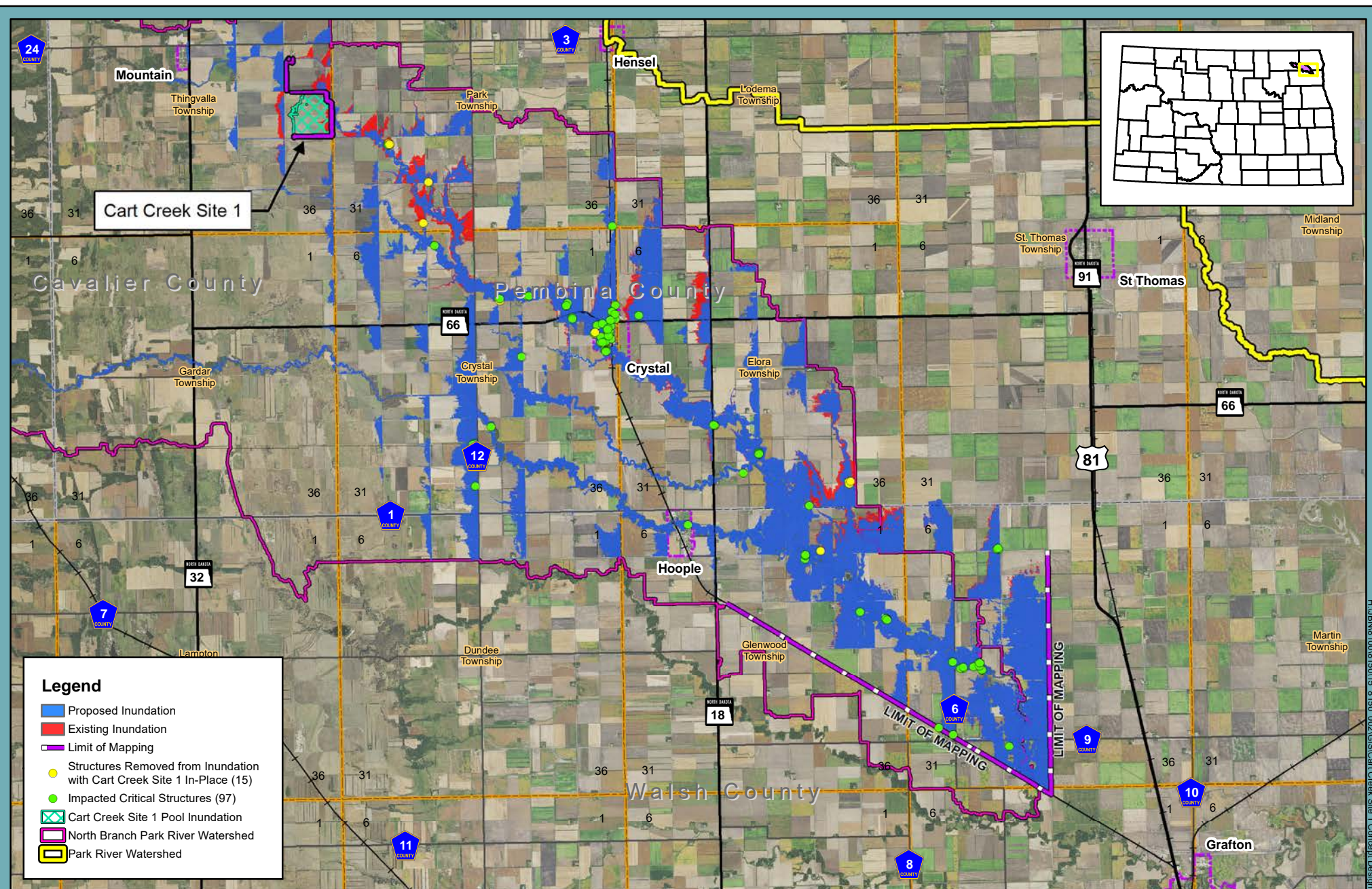
North Branch Park River Watershed
 Cart Creek Site 1 Concept Design Report
 Park River Joint Water Resource District



0 1 2 4 Miles







C-1.6

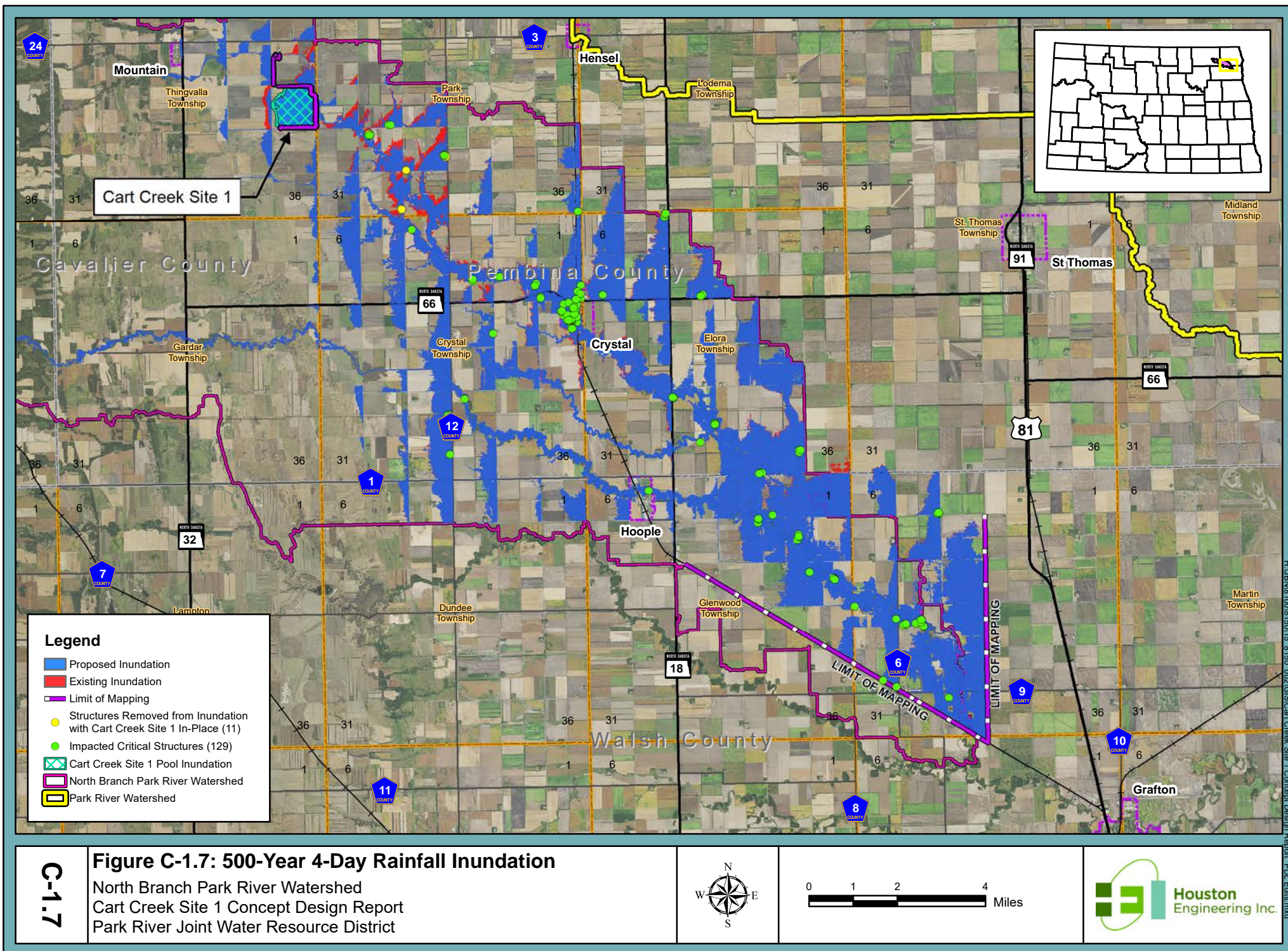
Figure C-1.6: 100-Year 4-Day Rainfall Inundation

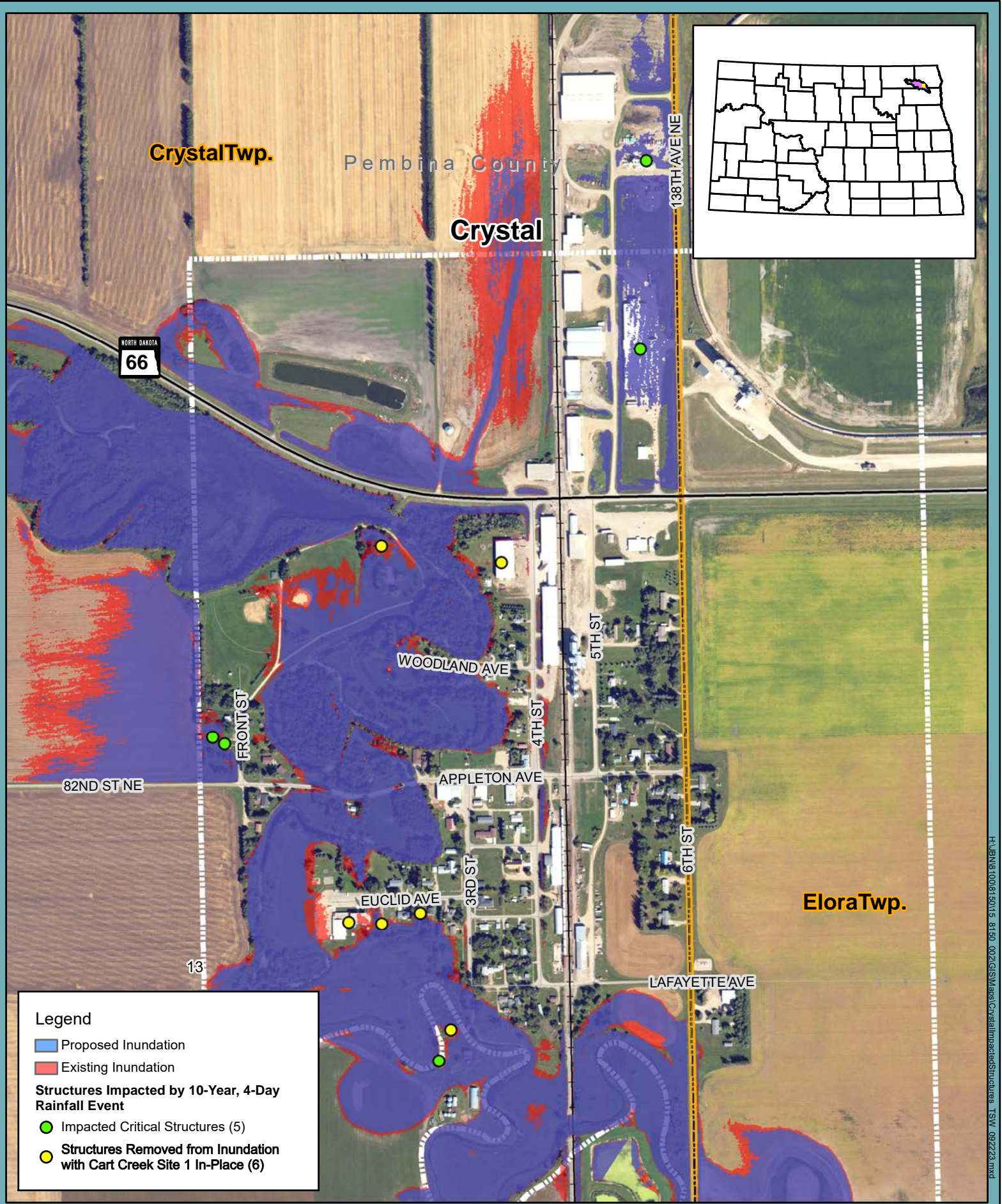
North Branch Park River Watershed
 Cart Creek Site 1 Concept Design Report
 Park River Joint Water Resource District



0 1 2 4 Miles

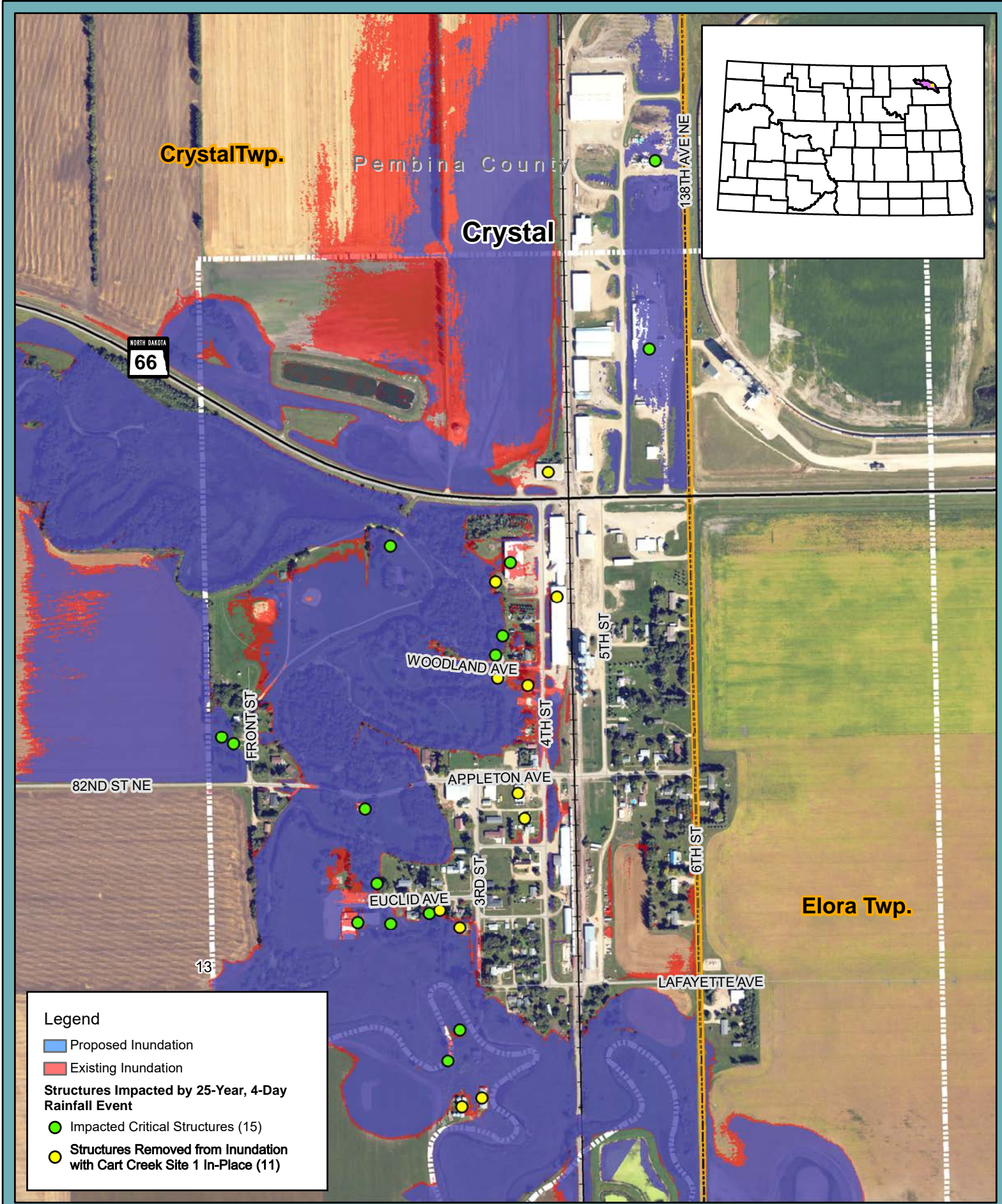
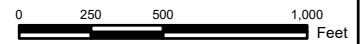






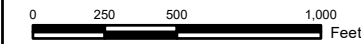
C-2.1

Figure C-2.1 Structures Impacted in the City of Crystal, ND
10-Year, 4-Day Rainfall Event
North Branch Park River Watershed



C-2.2

Figure C-2.2 Structures Impacted in the City of Crystal, ND
25-Year, 4-Day Rainfall Event
North Branch Park River Watershed



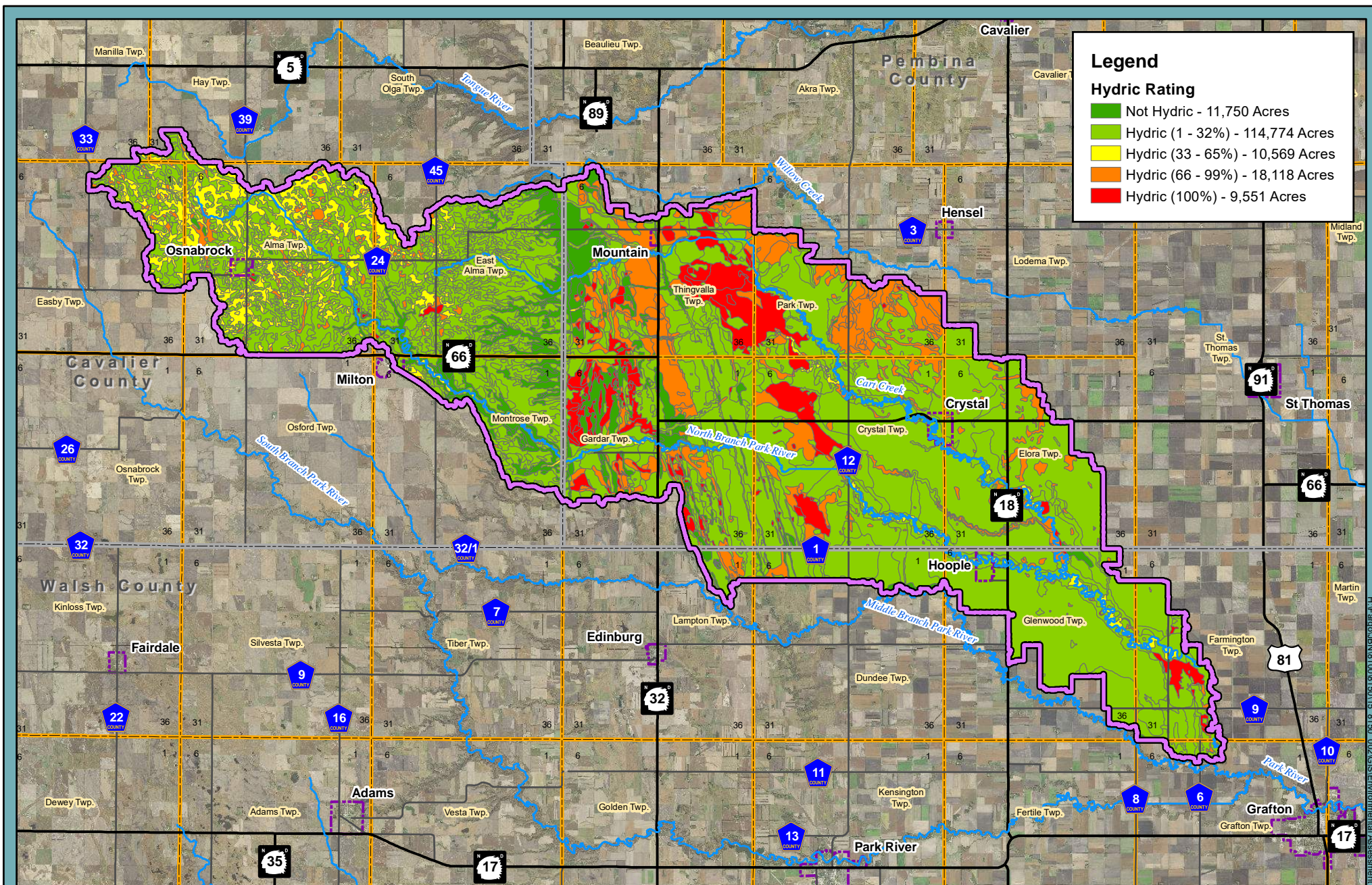
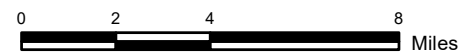
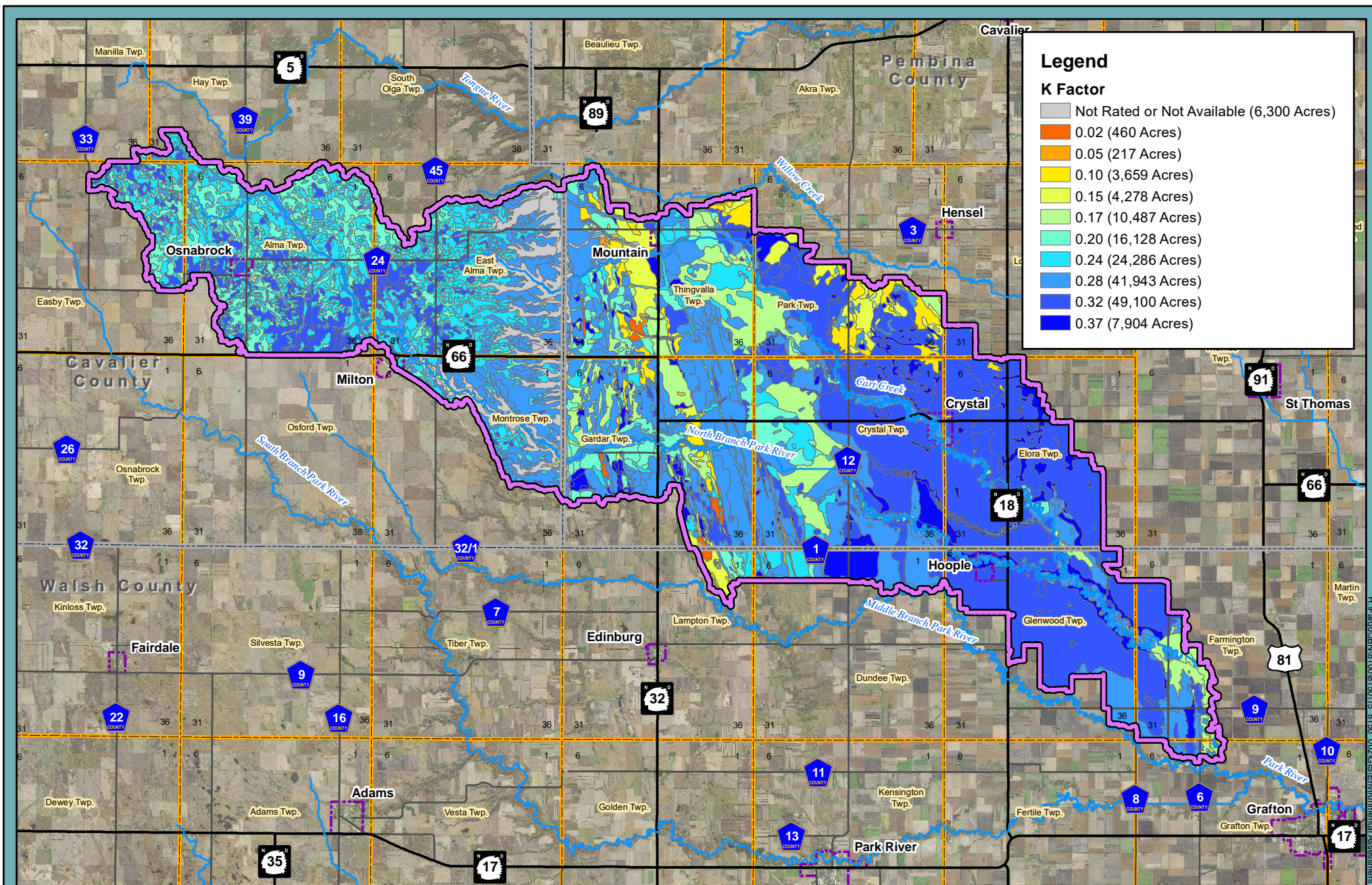


Figure C-3 Hydric Soils

North Branch Park River Watershed
Environmental Assessment
Park River Joint Water Resource District





C-4

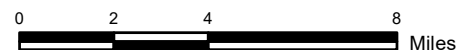
Figure C-4 Soil Erodibility Factor

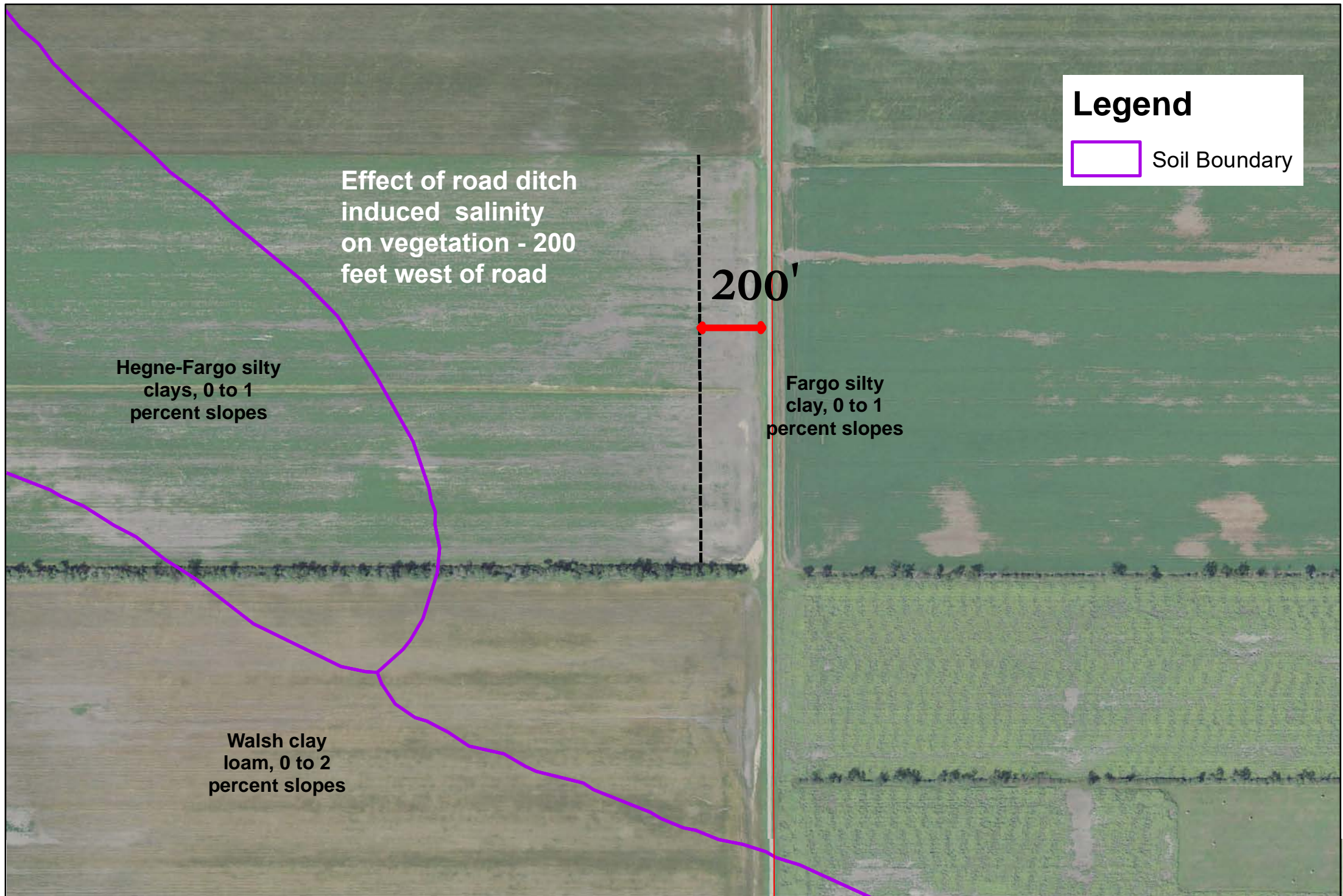
North Branch Park River Watershed
Environmental Assessment
Park River Joint Water Resource District





Figure C-5 USDA Farmland Classification
North Branch Park River Watershed
Environmental Assessment
Park River Joint Water Resource District



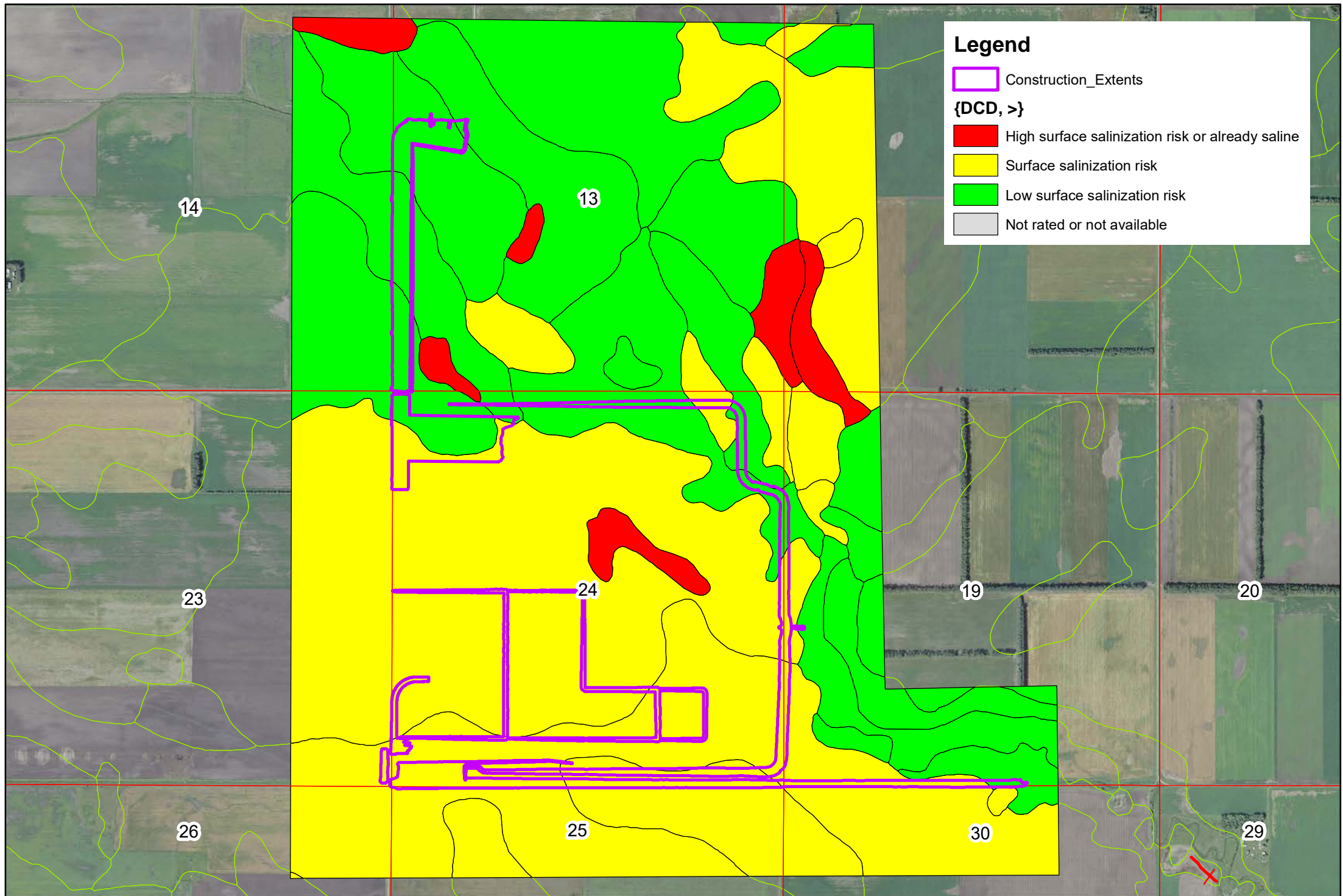


C-6

Figure C- 6: Visible Road Ditch Salinity Example
7-159-55 Pembina County ND

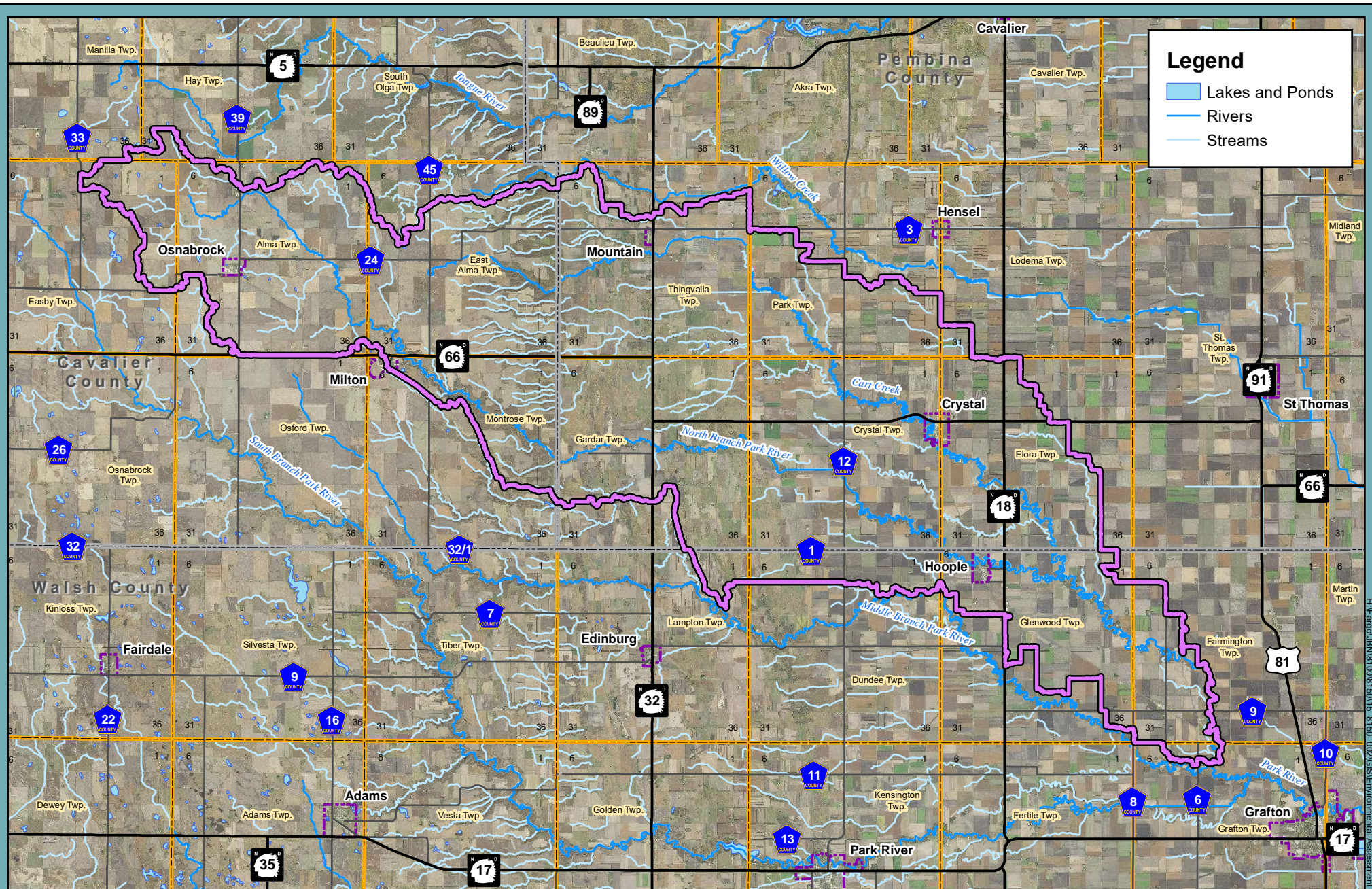


0 0.0275 0.055 0.11 0.165 0.22 Miles



C-7

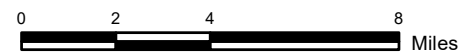
**Figure C- 7 Surface Salinization Risk
T160 R56 Pembina County ND**

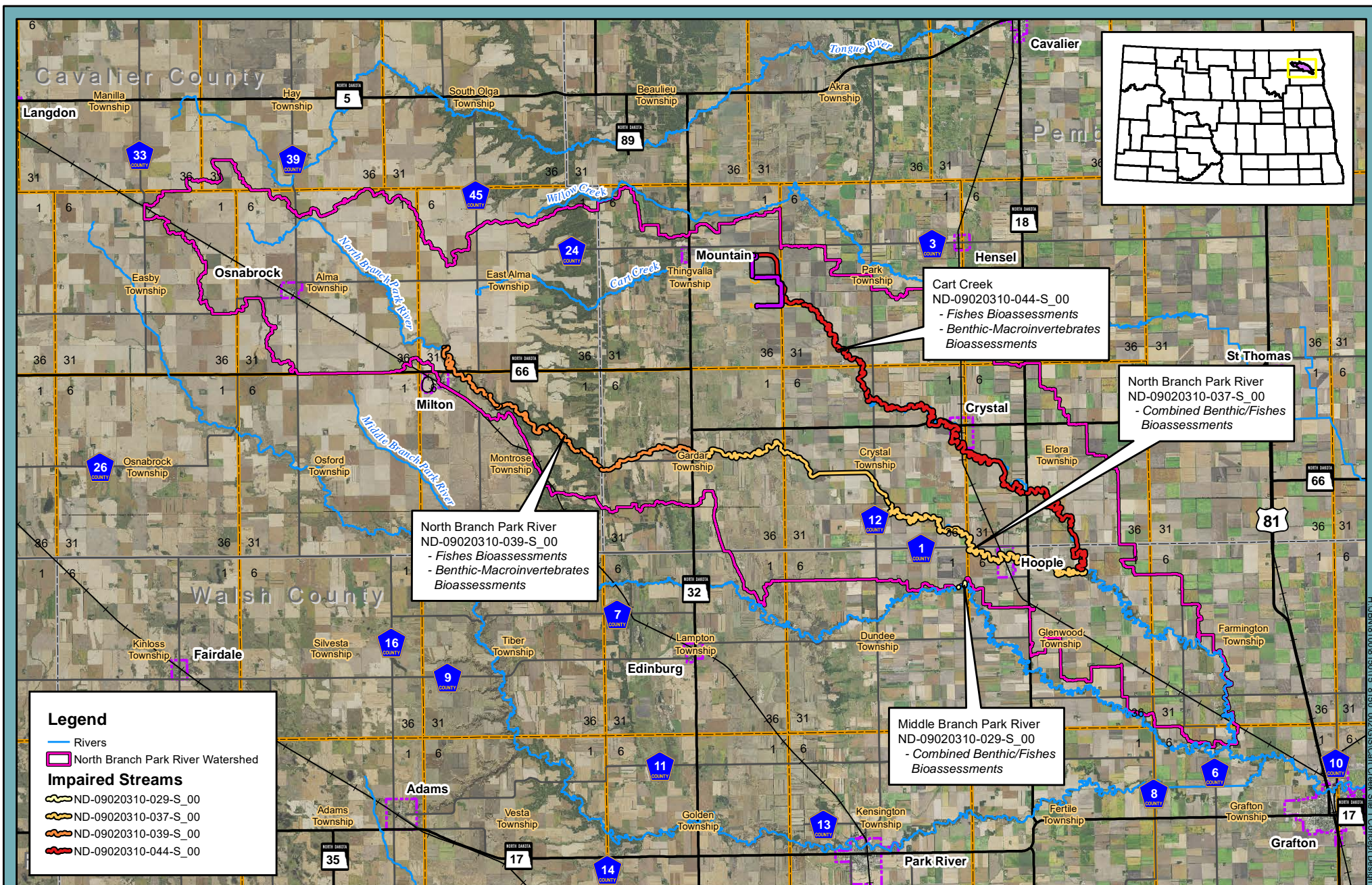


C-8

Figure C-8 Water Resources

North Branch Park River Watershed
Environmental Assessment
Park River Joint Water Resource District





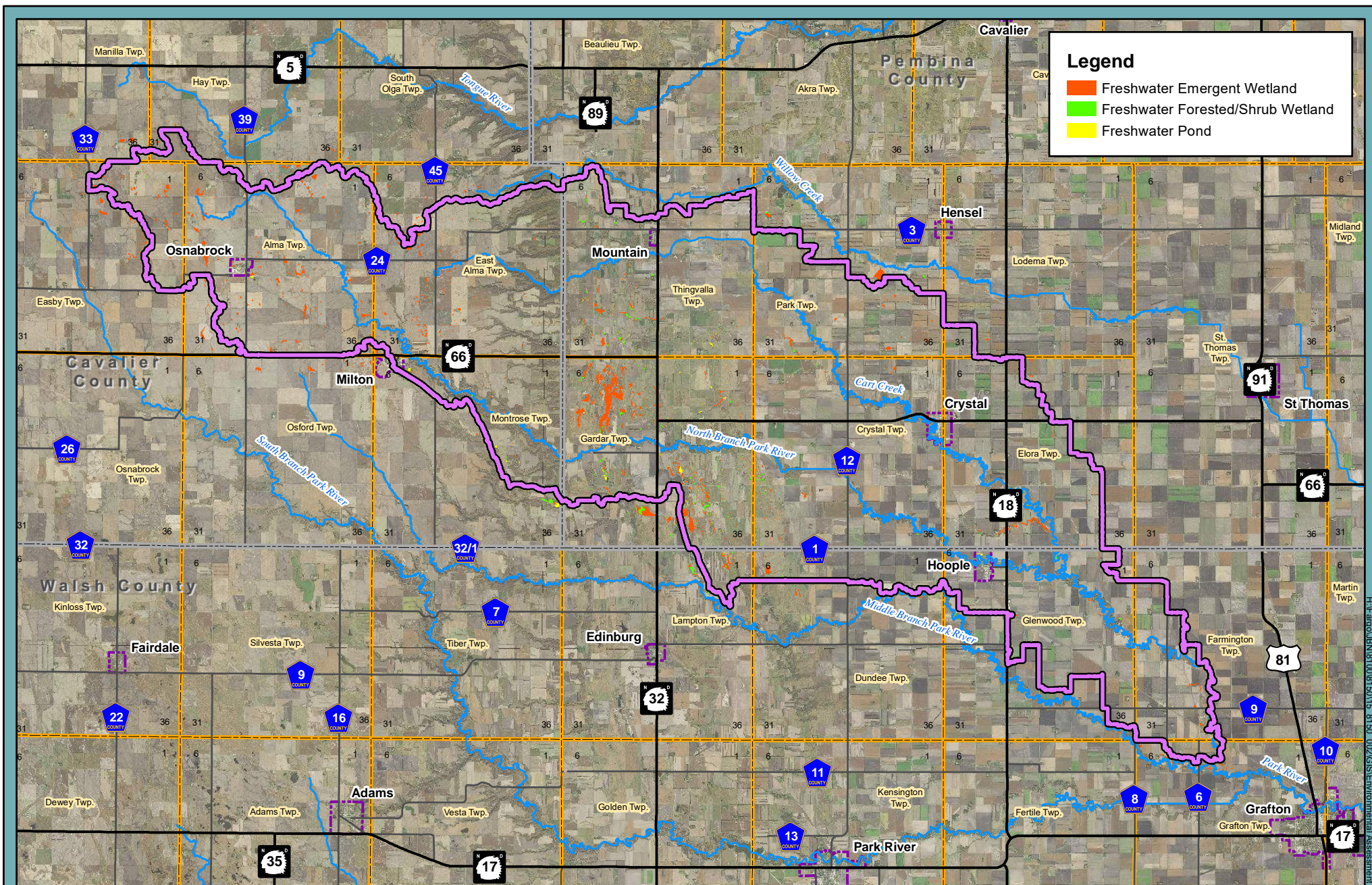
C-9

Figure C-9 Impaired Waters
North Branch Park River Watershed
Environmental Assessment
Park River Joint Water Resource District



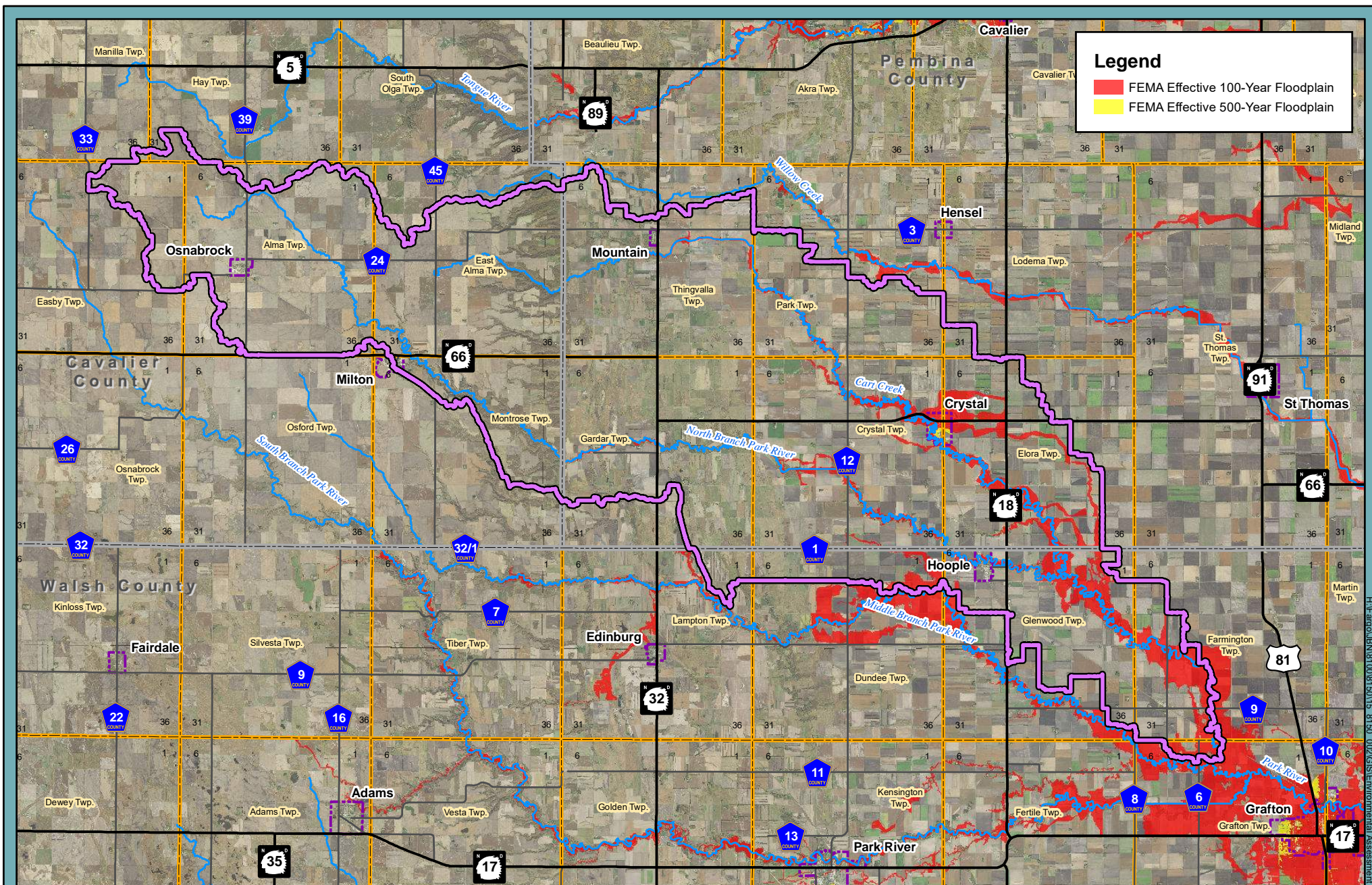
0 1.75 3.5 7 Miles





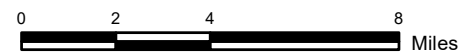
Legend

- Freshwater Emergent Wetland
- Freshwater Forested/Shrub Wetland
- Freshwater Pond



C-11

Figure C-11 FEMA Floodplain
 North Branch Park River Watershed
 Environmental Assessment
 Park River Joint Water Resource District



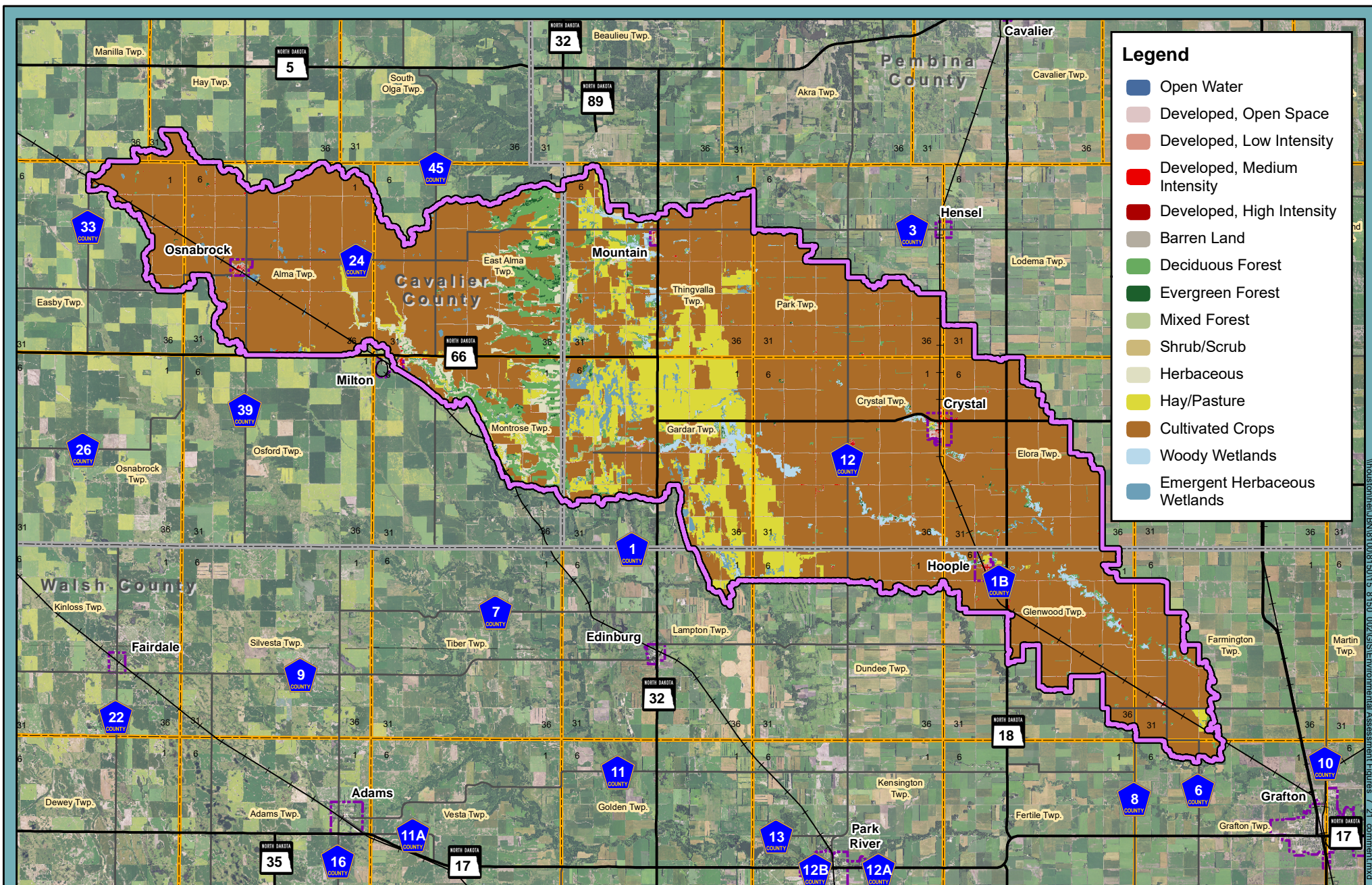
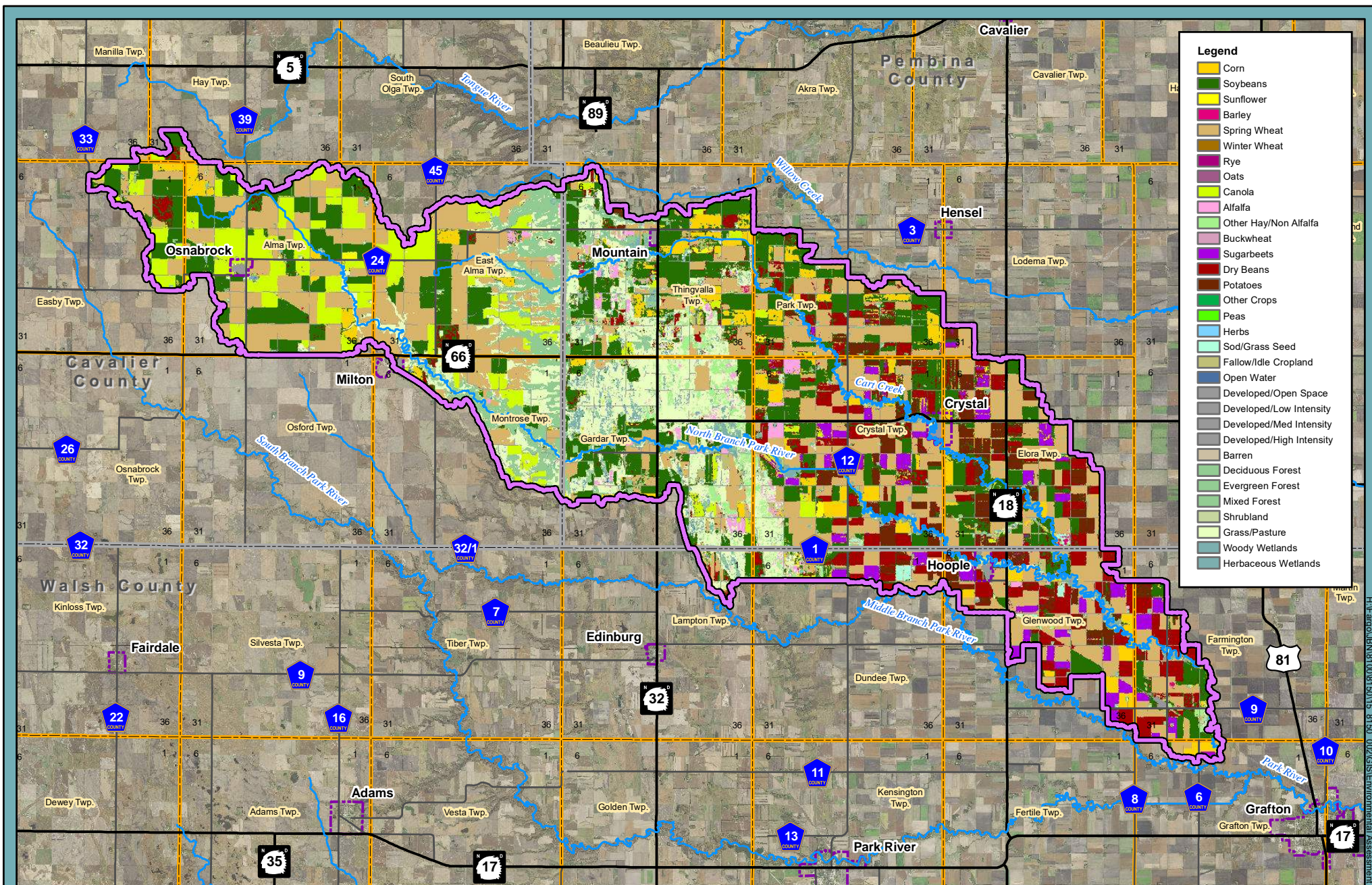


Figure C-12: National Land Cover Data (2019)

North Branch Park River Watershed
Environmental Assessment
Park River Joint Water Resource District

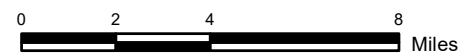


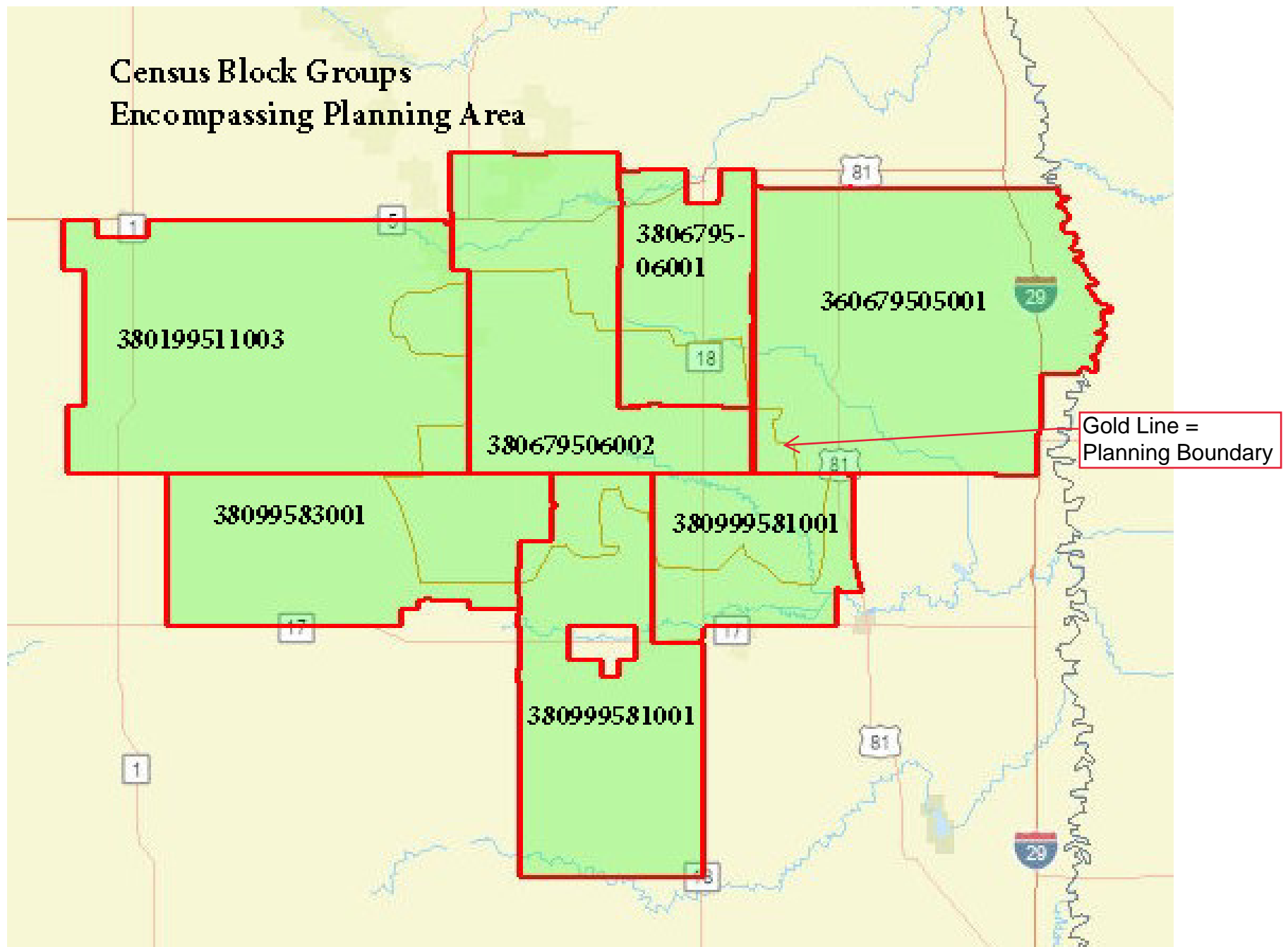


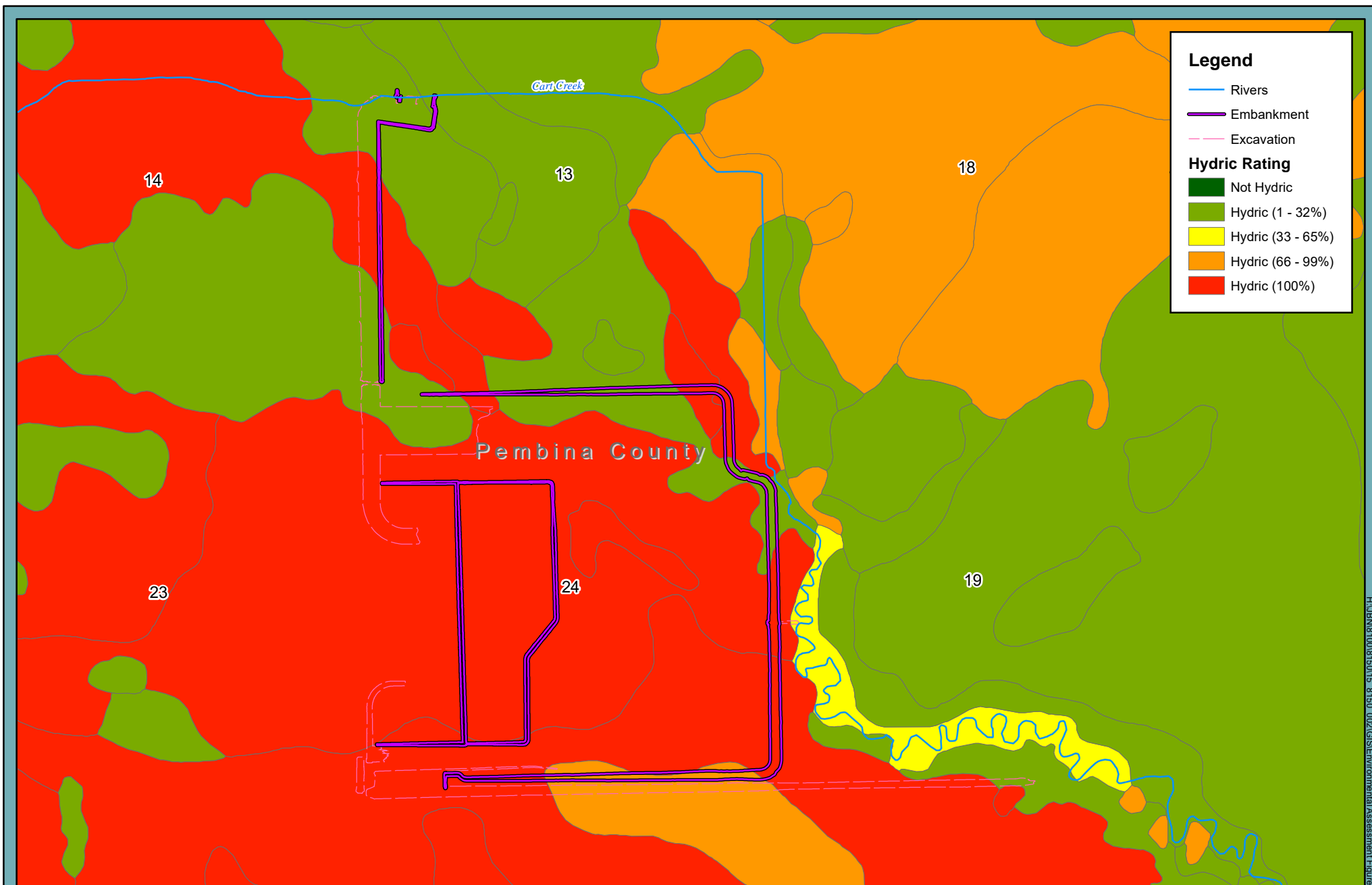
C-13

Figure C-13 NASS Cropland Data (2017)

North Branch Park River Watershed
Environmental Assessment
Park River Joint Water Resource District







H:\BNR\00\0615015_8150_002\GIS\EnvironmentalAssessment\Figures_Working.mxd

C-15

Figure C-15: Cart Creek Site 1, Hydric Soils

North Branch Park River Watershed
Environmental Assessment
Park River Joint Water Resource District



0 0.125 0.25 0.5 Miles





C-16

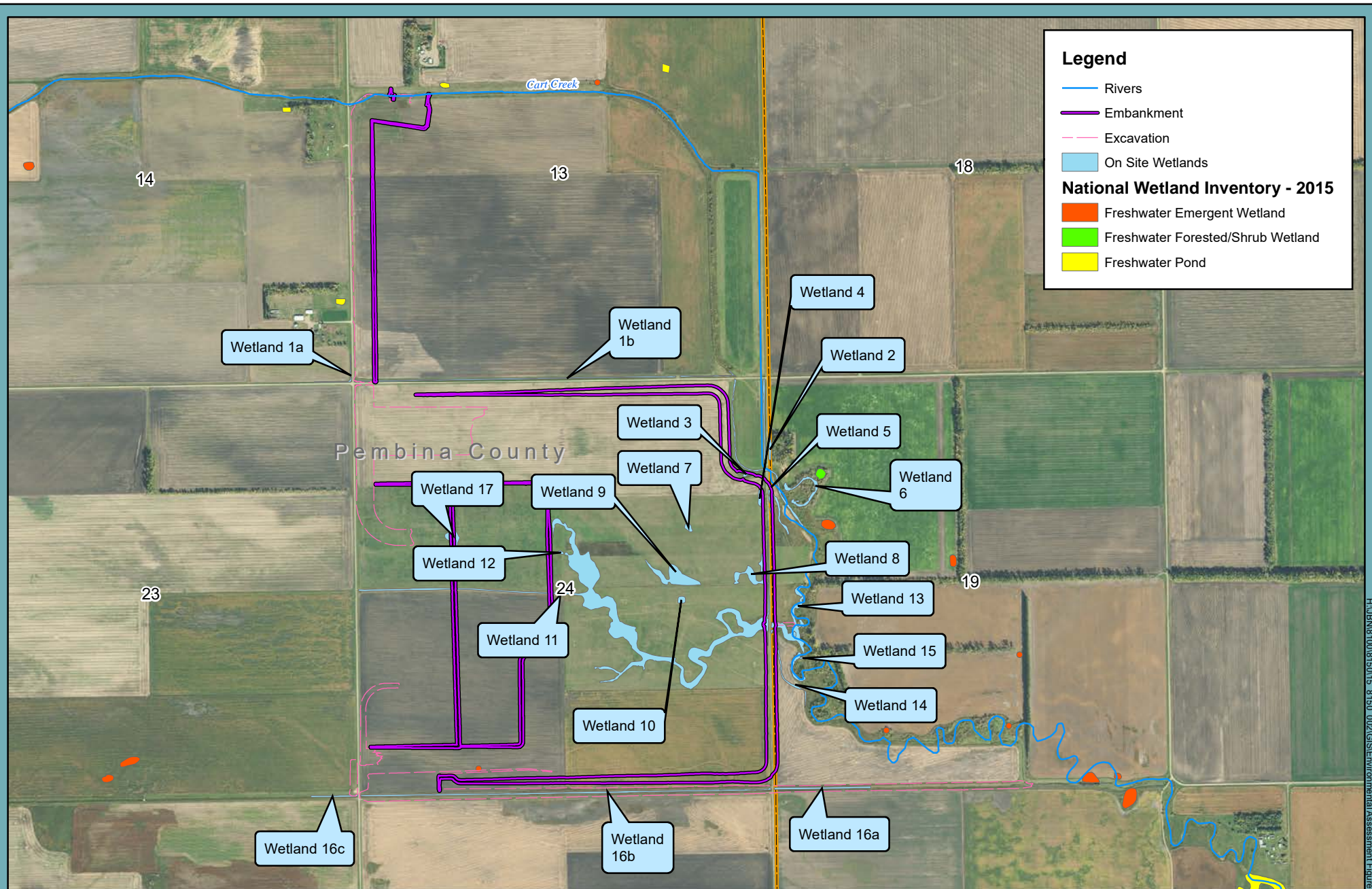
Figure C-16: Cart Creek Site 1, Soil Erodibility

North Branch Park River Watershed
Environmental Assessment
Park River Joint Water Resource District



0 0.125 0.25 0.5 Miles





C-17

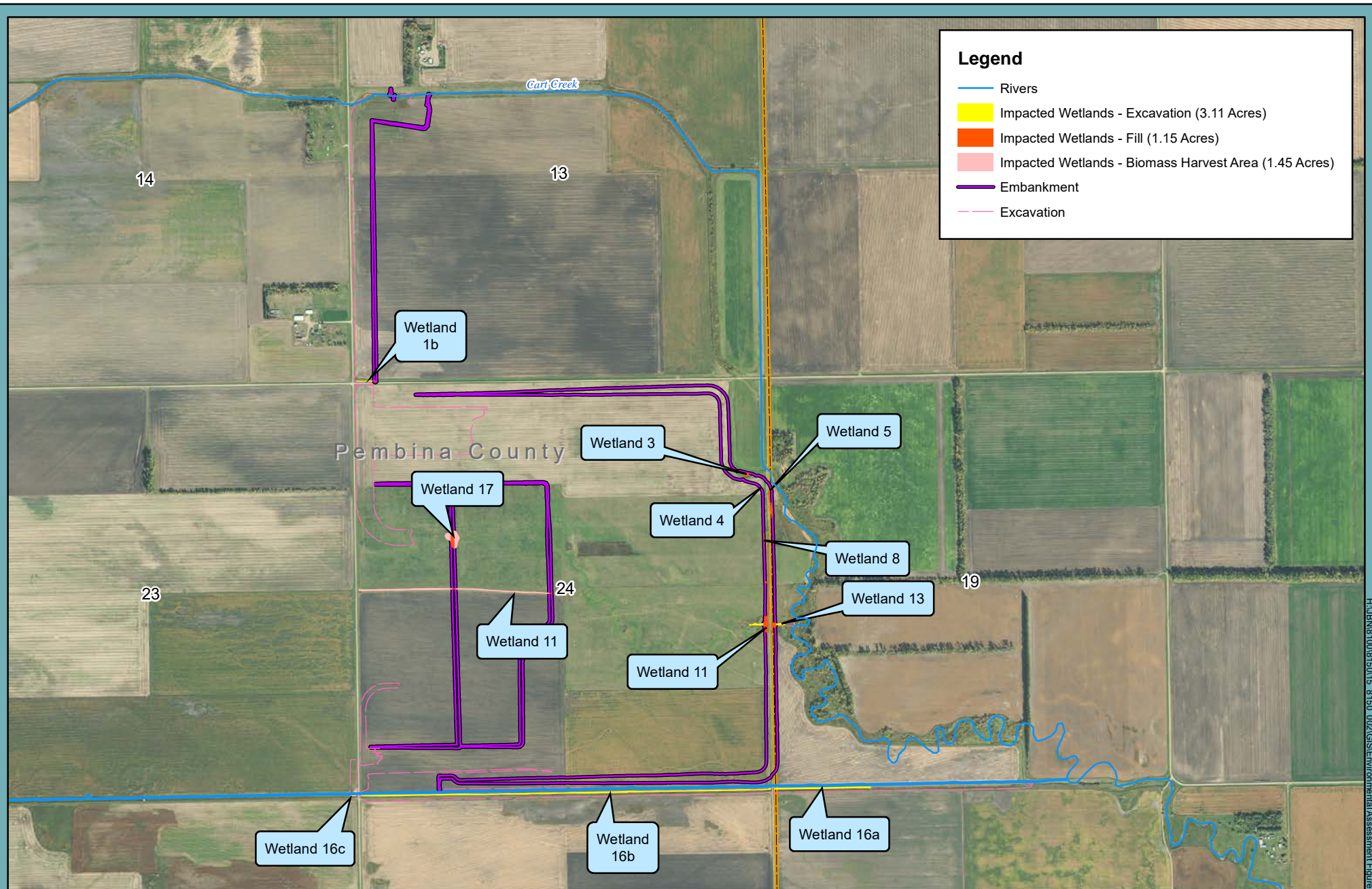
Figure C-17: Cart Creek Site 1, Wetlands

North Branch Park River Watershed
Environmental Assessment
Park River Joint Water Resource District



0 0.125 0.25 0.5 Miles





C-18

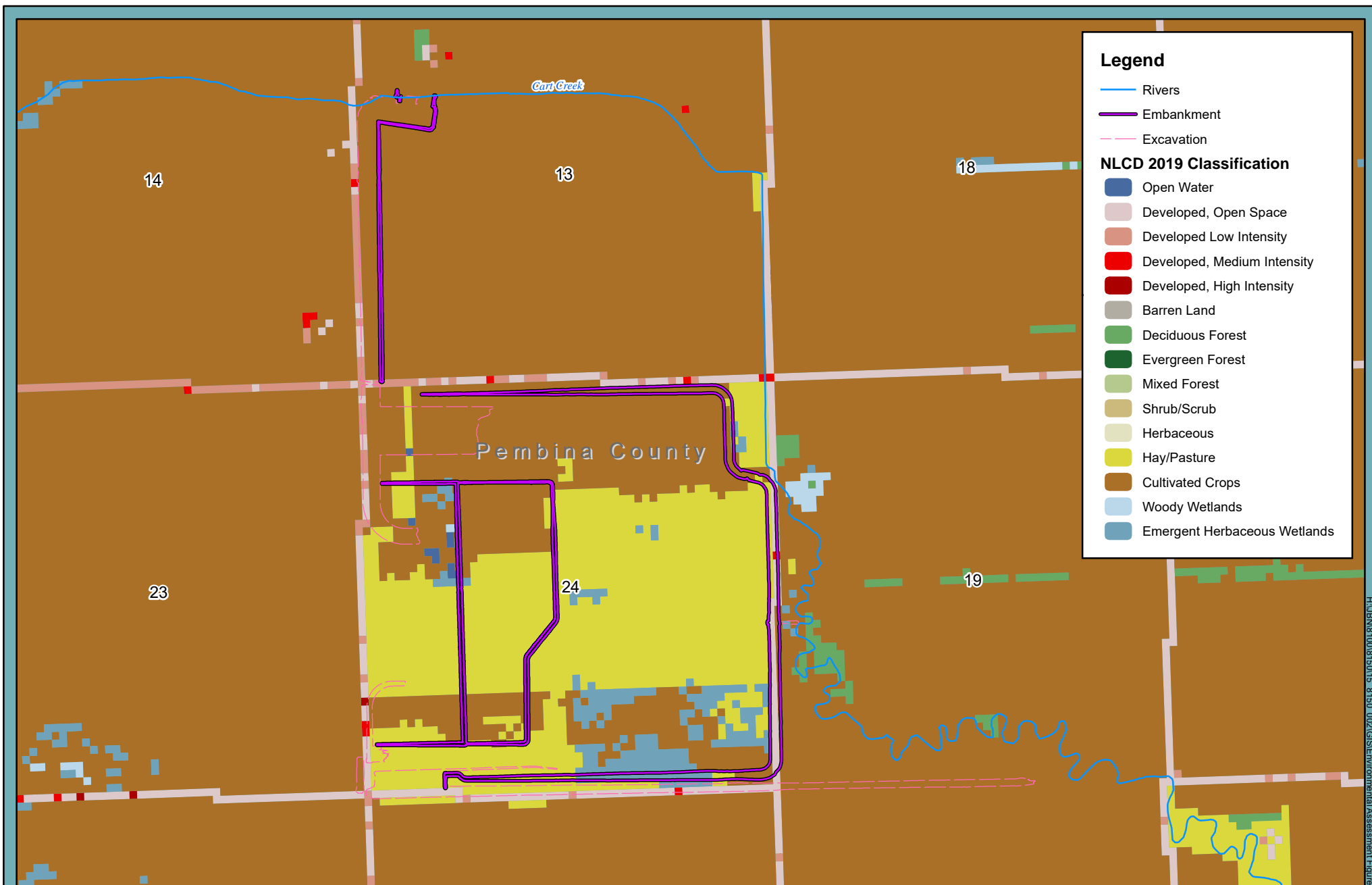
Figure C-18: Cart Creek Site 1, Wetland Impacts Map

North Branch Park River Watershed
Environmental Assessment
Park River Joint Water Resource District



0 0.125 0.25 0.5
Miles





C-19

Figure C-19: Cart Creek Site 1, National Land Cover Data (2019)

North Branch Park River Watershed
Environmental Assessment
Park River Joint Water Resource District



0 0.125 0.25 0.5
Miles





C-20

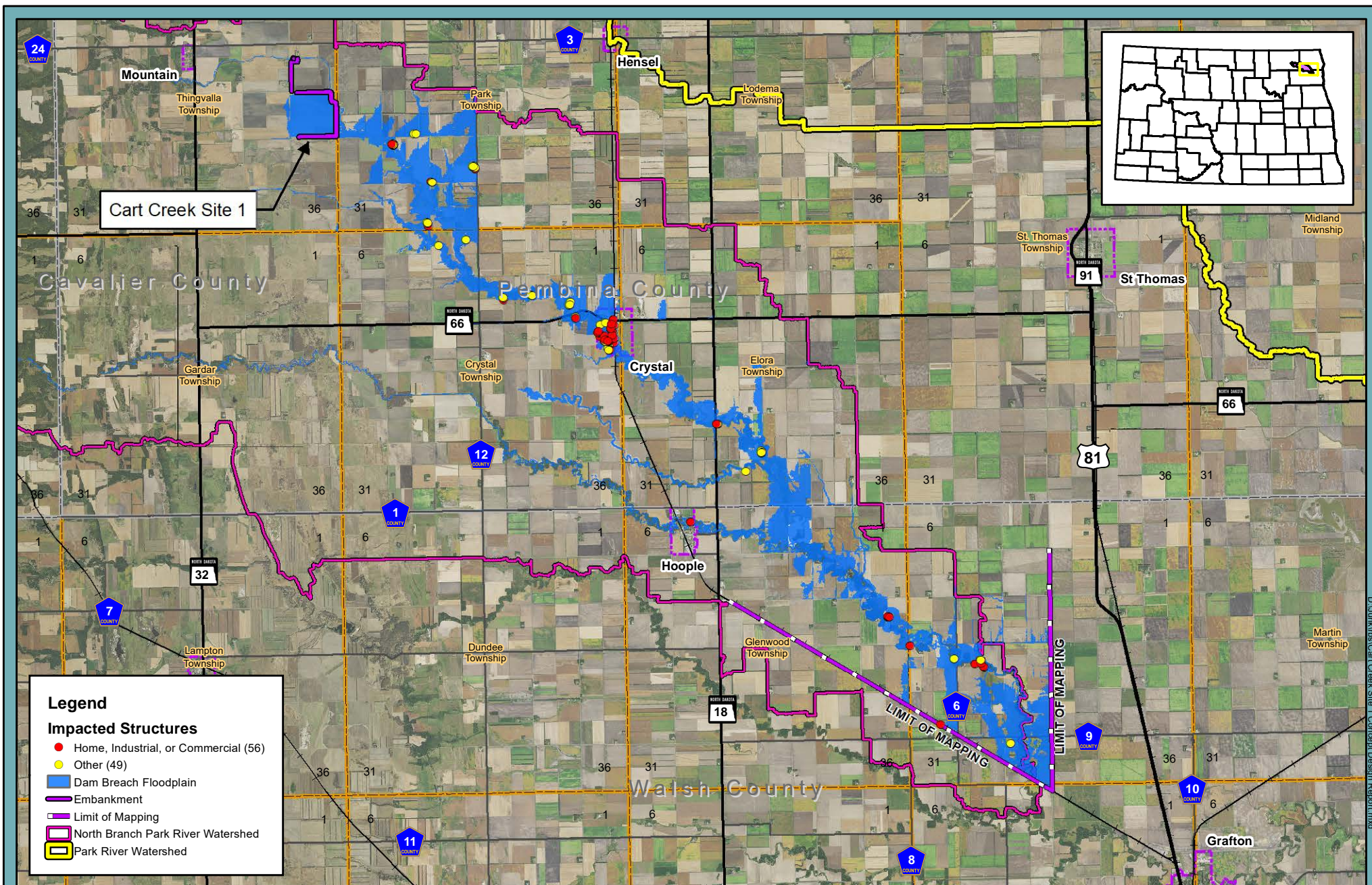
Figure C-20: Cart Creek Site 1, NASS Cropland Data (2017)

North Branch Park River Watershed
Environmental Assessment
Park River Joint Water Resource District



0 0.125 0.25 0.5
Miles

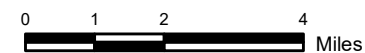


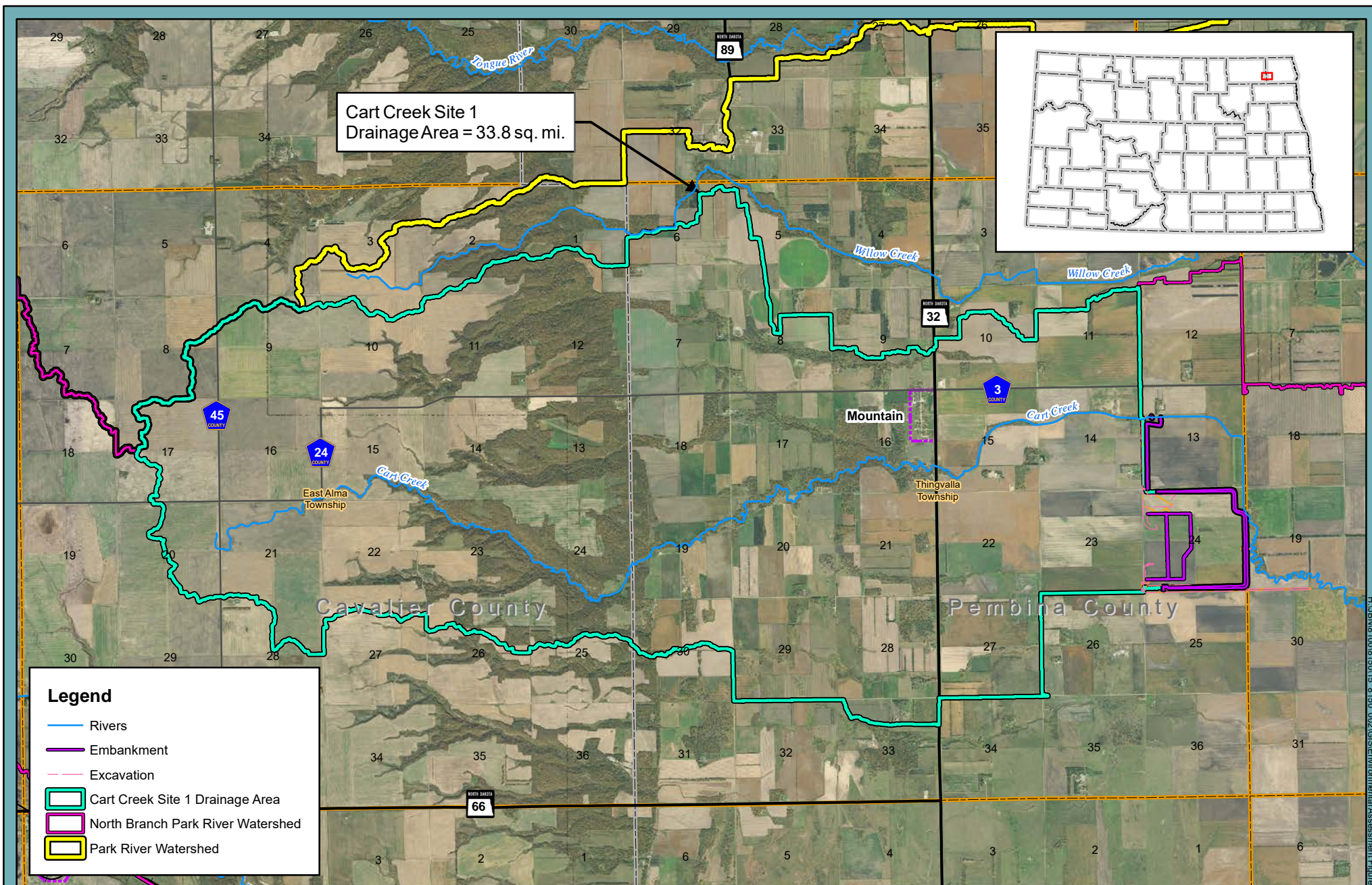


C-21

Figure C-21 Dam Breach Inundation

North Branch Park River Watershed
Environmental Assessment
Park River Joint Water Resource District





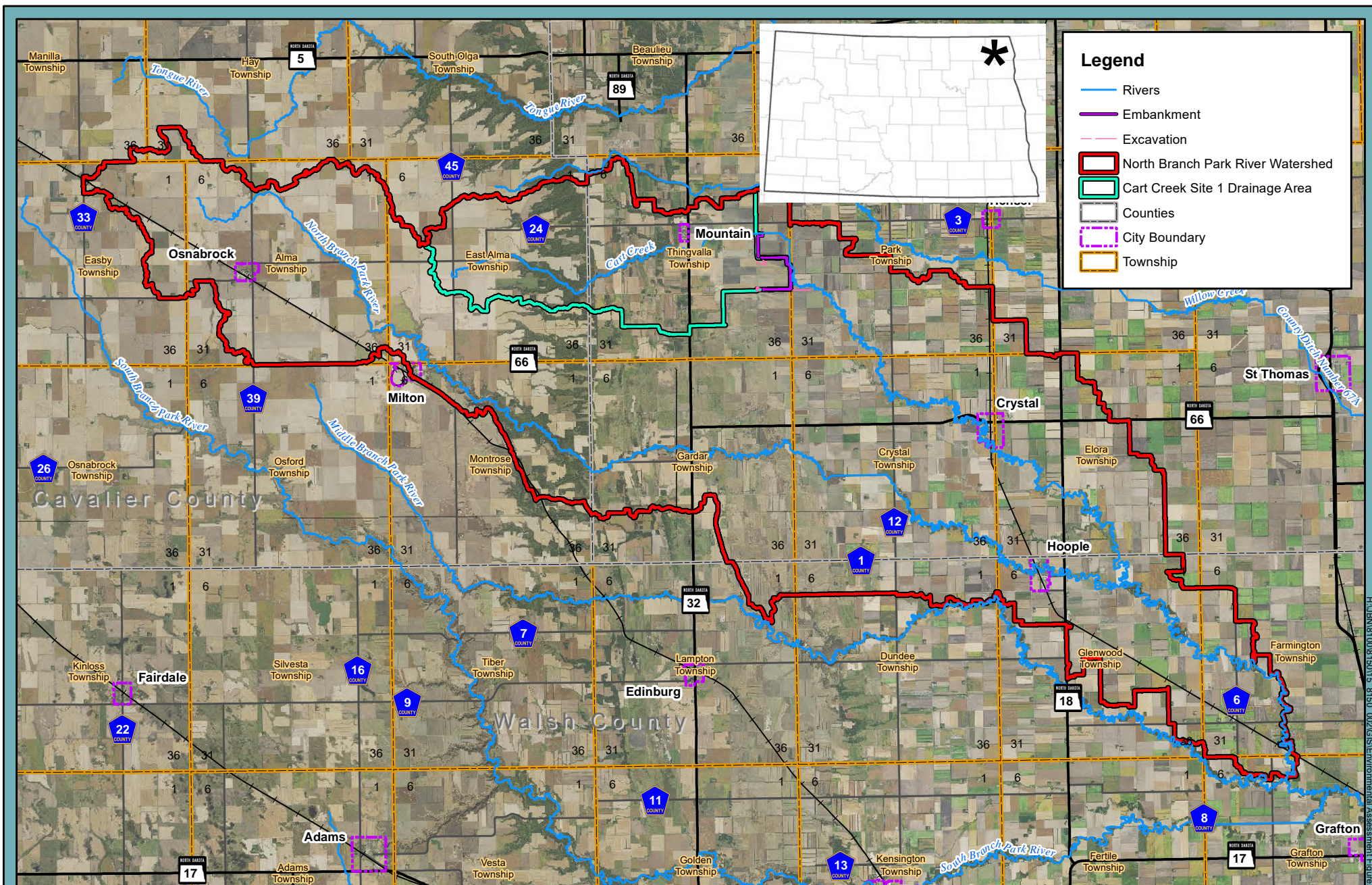
C-22

Figure C-22: Cart Creek Site 1, Drainage Area
North Branch Park River Watershed
Environmental Assessment
Park River Joint Water Resource District



0 0.5 1 2 Miles





C-23

Figure C-23 Project Location Map

North Branch Park River Watershed. ND
Environmental Assessment
Park River Joint Water Resource District



0 1.75 3.5 7 Miles

