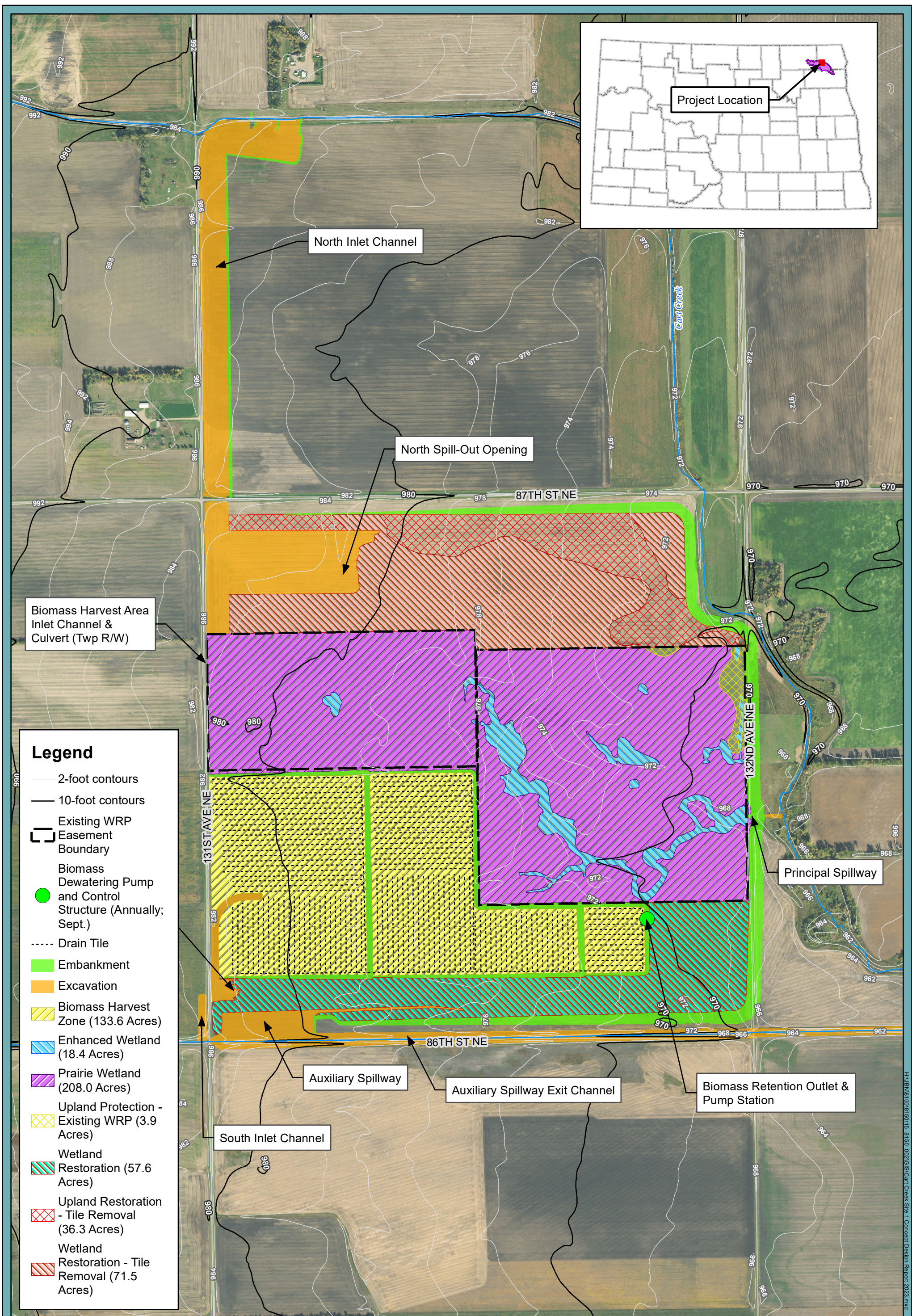


APPENDIX B

Project Map

Figure B-1

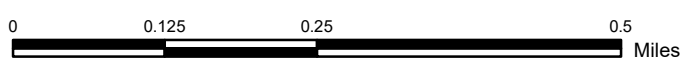
Preferred Alternative Project Map



Legend

- 2-foot contours
- 10-foot contours
- Existing WRP Easement Boundary
- Biomass Dewatering Pump and Control Structure (Annually; Sept.)
- Drain Tile
- Embankment
- Excavation
- Biomass Harvest Zone (133.6 Acres)
- Enhanced Wetland (18.4 Acres)
- Prairie Wetland (208.0 Acres)
- Upland Protection - Existing WRP (3.9 Acres)
- Wetland Restoration (57.6 Acres)
- Upland Restoration - Tile Removal (36.3 Acres)
- Wetland Restoration - Tile Removal (71.5 Acres)

Figure B-1: Preferred Alternative Project Map
 North Branch Park River Watershed
 Environmental Impact Statement
 Park River Joint Water Resource District



H:\BNSR\00181501\15_8150_002\GIS\Cart\Cart_Creek_Site_1_Conceptual_Design_Report_2023.mxd