

State Specific Training Module for Wyoming

Purpose of this Module

This module will provide some general information that TSPs need to conduct conservation planning in Wyoming. This information is general in nature so the TSP may need to follow up with additional reading or training to make sure they have the knowledge, skill, licenses and certifications to conduct conservation planning in this state.

The NRCS Mission for Equity

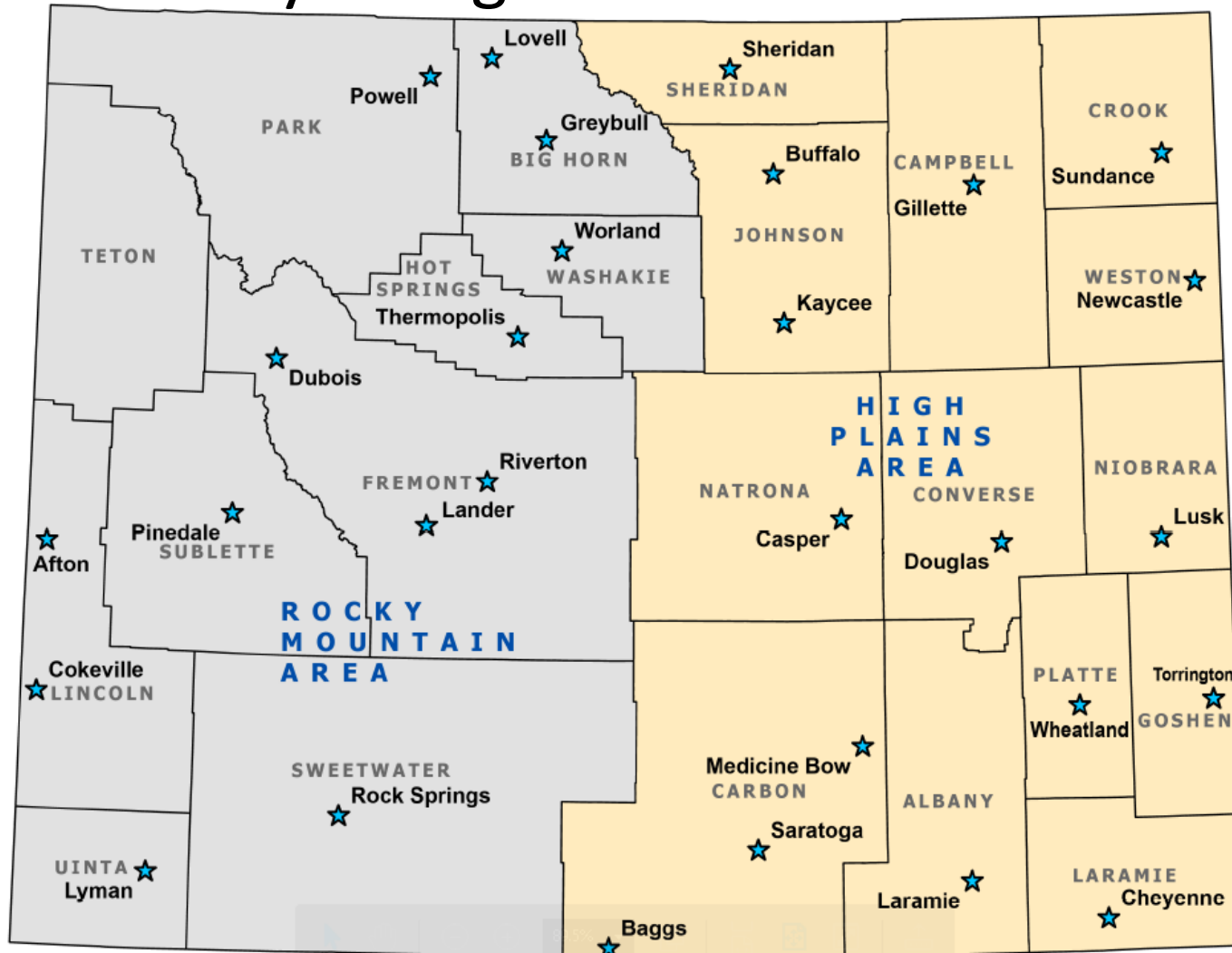
NRCS is dedicated to the mission of equity in all we do. This is accomplished through advancing equity, justice, and opportunity for those we serve by sustaining fairness of programs, services, and technical assistance. Equity is about fairness for all, this especially applies to individuals who belong to communities that may have historically been denied such treatment.

What does Equity Mean for You?

This means that we (as an agency and partner organizations we work with) are always striving to be aware of those we are serving, and accounting for the differences in each individual's starting point when pursuing a goal and working to remove barriers to equal opportunity through providing support based on individual unique needs.



Wyoming Office Locations



Review of State Laws

Wyoming statutes are available for viewing on the Wyoming Legislative Services Office website at:

<http://legisweb.state.wy.us/statutes/statutes.aspx>

Specific titles within state statute that are more relevant to TSP activities are:

- Title 11 – Agriculture, Livestock, and other Animals
- Title 41 – Water

Review of State FOTG Requirements

The Wyoming Field Office Technical Guide (FOTG) is the official source of information used in conservation planning and application.

- Updates to the FOTG happen regularly and should always be the source of current information. Use of copied information may not be the most up to date and is discouraged.
- If you experience difficulties in locating information within the FOTG, contact the State Resource Conservationist (SRC) at 307-233-6763.

Review of Important Resource Issues

Typical resource concerns treated:

- Degraded Plant Condition
 - Plant Productivity and Health
- Source Water Depletion
 - Inefficient Irrigation Water Use
- Terrestrial Habitat
 - Terrestrial Habitat for Wildlife and Invertebrates
- Livestock Production Limitation
 - Inadequate Livestock Water Quantity, Quality, and Distribution
 - Feed and Forage Balance
- Pest Pressure
 - Plant Pest Pressure
- Field Sediment, Nutrient, and Pathogen Loss
 - Nutrients Transported to Surface and Groundwater
 - Sediment Transported to Surface Water
- Concentrated Erosion
 - Bank Erosion from Streams, Shorelines, or Water Conveyance Channels
- Wind and Water Erosion
 - Sheet and Rill Erosion
 - Wind Erosion
- Weather Resilience
 - Drifted Snow
 - Naturally Available Moisture

Review of Important Resource Issues

Practices used to treat typical resource concerns:

- Herbaceous Weed Treatment (315)
- Conservation Crop Rotation (328)
- Residue and Tillage Management, Reduced Till (345)
- Fence (382)
- Irrigation Pipeline (430)
- Sprinkler System (442)
- Irrigation Water Management (449)
- Livestock Pipeline (516)
- Prescribed Grazing (528)
- Pumping Plant (533)
- Structure for Water Control (587)
- Watering Facility (614)
- Water Well (642)
- Upland Wildlife Habitat Management (645)

Review of Important Resource Issues

The Greater Sage Grouse:

- Is an upland bird that is currently not warranted for listing under the Endangered Species Act, but is a State Species of Greatest Conservation Need that receives special protection via State law.
- WY has the largest populations of Greater Sage Grouse in the nation, with the bird inhabiting approximately 2/3 of the state.
- To prevent the need for ESA protection, the State of WY has enacted unprecedented sagebrush/sage grouse habitat protections to the highest density sage grouse population areas (Core Areas).

Review of Important Resource Issues

The Greater Sage Grouse (continued):

- Restrictions generally target industrial developments, but some do apply to agricultural activities and WY NRCS conservation practices.
- Planners working within the sagebrush-steppe ecosystem of WY should be aware of the Governor's Executive Order 2019-3 and contact the NRCS State Biologist or the Wyoming Game and Fish Department for additional planning considerations.
- The Governor's Executive Order 2019-3 is available at:
<https://wgfd.wyo.gov/Habitat/Sage-Grouse-Management/Sage-Grouse-Executive-Order>

Review of Major Land Uses

The state is dominated by native rangeland utilized for grazing with areas of cropland dominating specific geographic areas. The map on the next slide shows those areas of cropland.

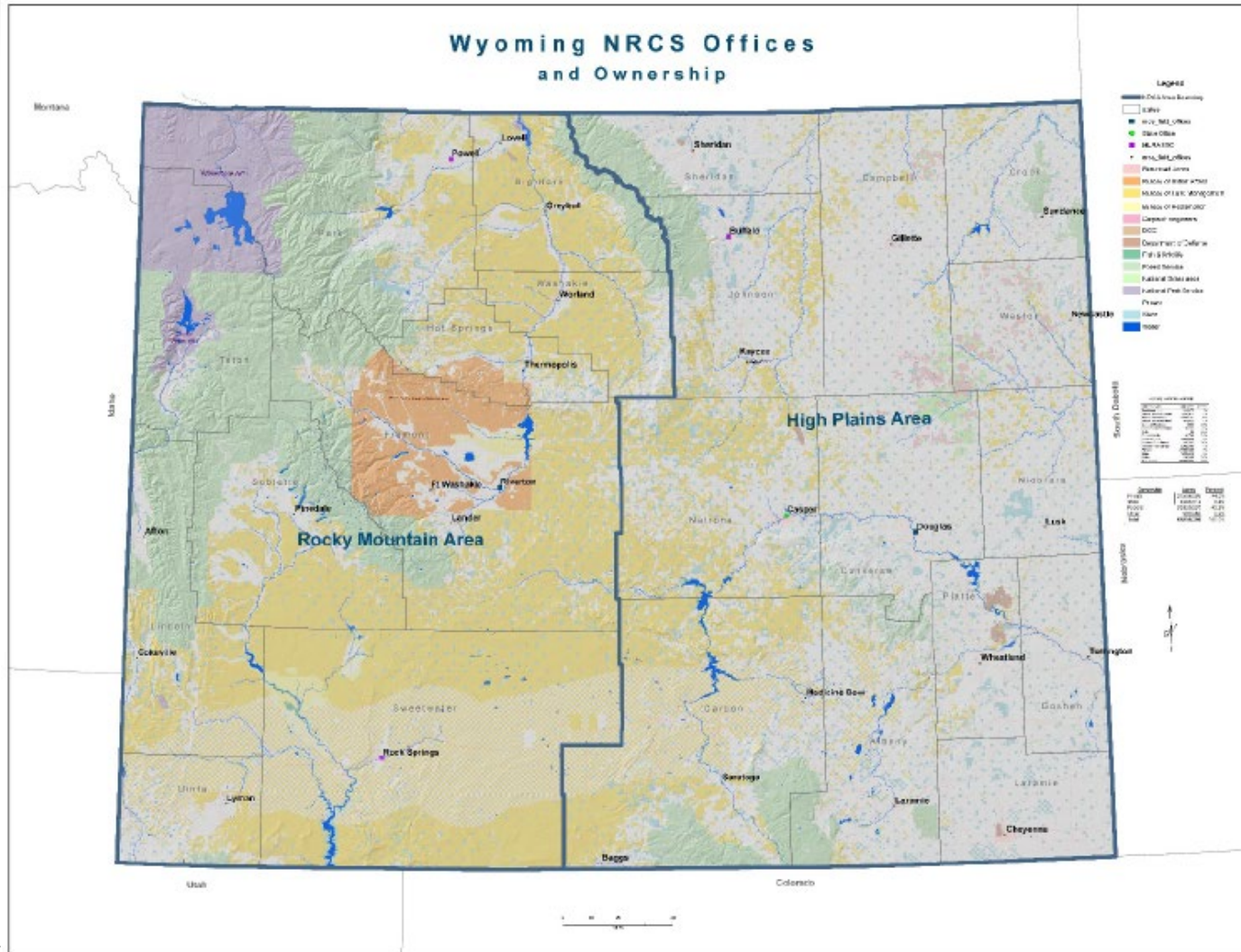
Cropland Areas within Wyoming



Review of Major Land Ownership

Approximately 55% of this state is public lands. Most of the public land is managed for multiple use, and leases by individual ranchers is common. Conservation planning on private land may include a public component, however the opportunity for private individuals to construct permanent conservation practices on public lands is possible after consultation with the public land management agency.

Land Ownership

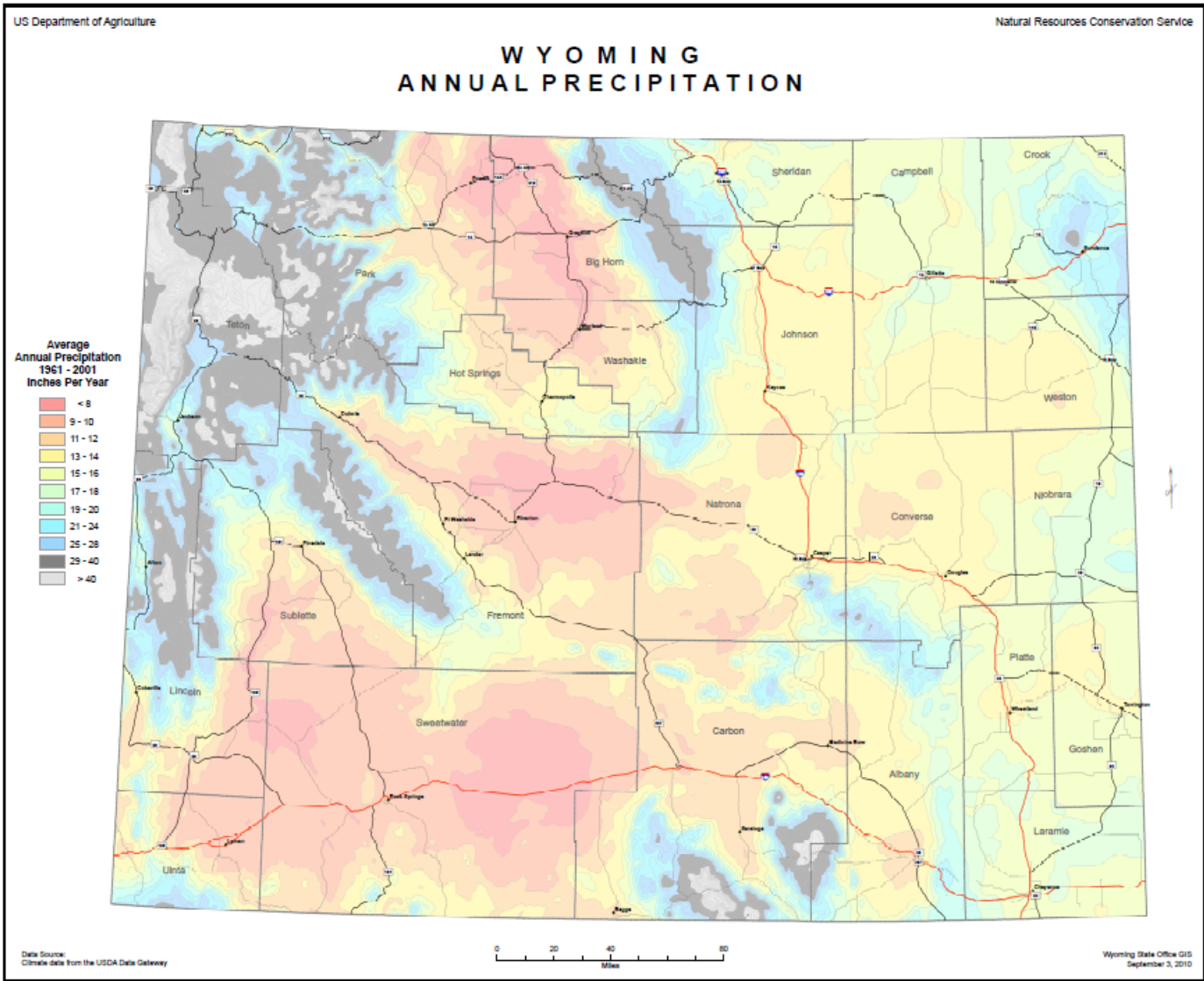


Land Ownership

<u>Ownership</u>	<u>Acres</u>	<u>Percent</u>
Private	27,566,293	44.0%
State	3,629,514	5.8%
Federal	30,899,537	49.3%
Other	563,963	0.9%
Total	62,659,307	100.0%

<u>Wyoming General Ownership</u>		
Surface Owner	Total Acres	Percent
Bankhead Jones	314,472	0.5%
Bureau of Indian Affairs	1,549,677	2.6%
Bureau of Land Management	17,530,787	28.9%
Bureau of Reclamation	501,422	0.8%
Corps of Engineers	1,009	0.0%
Department of Defense	76,219	0.1%
DOE	88	0.0%
Fish and Wildlife	42,701	0.1%
Forest Service	6,652,602	11.0%
National Grasslands	242,393	0.4%
National Park Service	2,302,489	3.8%
Private	27,566,293	45.4%
State	3,629,491	6.0%
Water	249,491	0.4%
Grand Total	60,659,134	100%

Precipitation



Use of Soils Information in Planning

- Soils information is available at:
<https://websoilsurvey.sc.egov.usda.gov/App/HomePage.htm>
- Soils survey development continues in Wyoming. There are places in the state with incomplete data. For the current status of data availability, visit:
<http://websoilsurvey.sc.egov.usda.gov/DataAvailability/SoilDataAvailabilityMap.pdf>
- If data is unavailable, contact the Wyoming State Soil Scientist (SSS) at 307-233-6768.

Expected TSP Workflow

- The State Resource Conservationist (SRC) will be responsible for reviewing TSP conservation planning for the National Planner Designation.
- Subsequent conservation plans will be reviewed by the District Conservationist (DC) at the local USDA Service Center.
- The SRC will conduct plan reviews for TSP planner designation renewals.
- TSPs will work with the local District Conservationist to make sure the proper environmental evaluations (NRCS-CPA-52) are completed, and that Section 106 of the National Historic Preservation Act has been addressed.

Additional References or Training

- State Field Office Technical Guide at:
<https://efotg.sc.egov.usda.gov/#/state/WY/documents>
- State Training on CNMP Development – contact SRC at 307-233-6763
- State Training on IPM – contact SRC

Non-Discrimination Statement

In accordance with Federal civil rights law and U.S. Department of Agriculture (USDA) civil rights regulations and policies, the USDA, its Agencies, offices, and employees, and institutions participating in or administering USDA programs are prohibited from discriminating based on race, color, national origin, religion, sex, gender identity (including gender expression), sexual orientation, disability, age, marital status, family/parental status, income derived from a public assistance program, political beliefs, or reprisal or retaliation for prior civil rights activity, in any program or activity conducted or funded by USDA (not all bases apply to all programs). Remedies and complaint filing deadlines vary by program or incident.

Persons with disabilities who require alternative means of communication for program information (e.g., Braille, large print, audiotope, American Sign Language, etc.) should contact the responsible Agency or USDA's TARGET Center at (202) 720-2600 (voice and TTY) or contact USDA through the Federal Relay Service at (800) 877-8339. Additionally, program information may be made available in languages other than English.

To file a program discrimination complaint, complete the USDA Program Discrimination Complaint Form, AD-3027, found online at [How to File a Program Discrimination Complaint](#) and at any USDA office or write a letter addressed to USDA and provide in the letter all of the information requested in the form. To request a copy of the complaint form, call (866) 632-9992. Submit your completed form or letter to USDA by: (1) mail: U.S. Department of Agriculture, Office of the Assistant Secretary for Civil Rights, 1400 Independence Avenue, SW, Washington, D.C. 20250-9410; (2) fax: (202) 690-7442; or (3) email: program.intake@usda.gov.

USDA is an equal opportunity provider, employer, and lender.

Certificate of Completion

After viewing the Wyoming State Specific Training module, please print and sign the completion certificate on the following slide.

The certificate is your acknowledgement that based on the information provided in this module, you have the proper knowledge, skills, and ability to conduct planning in Wyoming.

Within your NRCS Registry profile, enter the training and upload the signed certificate to verify completion.

STATE SPECIFIC TRAINING MODULE COMPLETION CERTIFICATE

I, _____ hereby verify I have viewed and understand the content of *Wyoming State*
TSP Name
Specific Training Module and affirm I have the knowledge, skills, and ability to conduct conservation planning
services in this state.

TSP Signature

Date