



United States Department of Agriculture



Natural
Resources
Conservation
Service



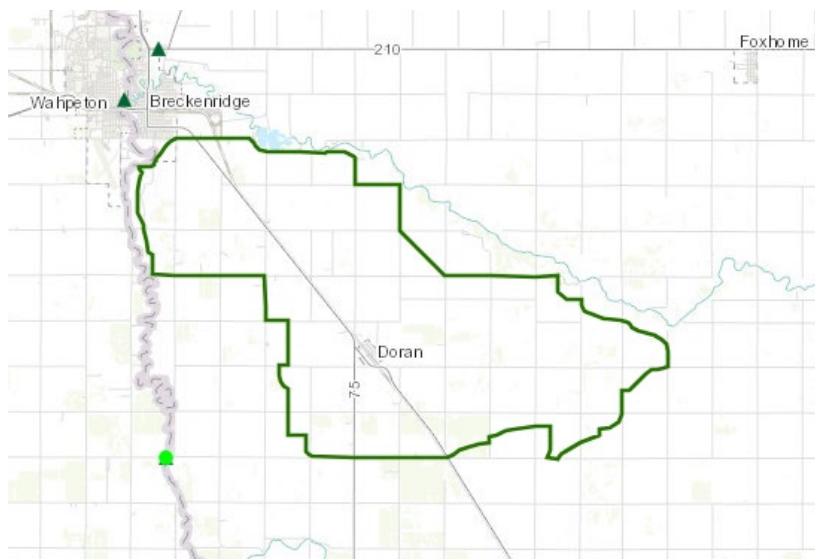
NWQI Submissions FY2024

Courtney Cheever, State Water Quality Specialist

Natural
Resources
Conservation
Service

nrcs.usda.gov/

Doran Creek - 090201010506



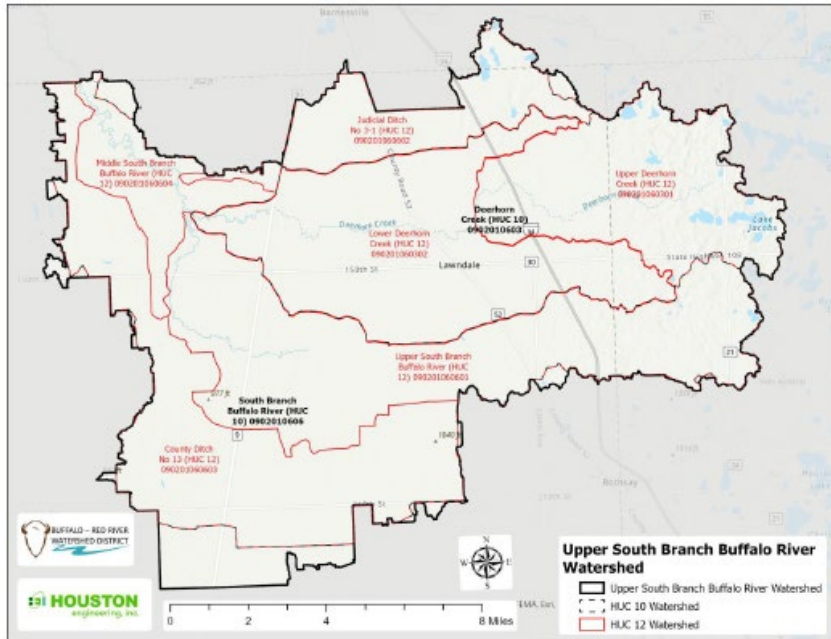
Doran Creek - 090201010506



- Approximately 25,000 acres of cropland in watershed
- Aquatic life impairment
- Planning phase to restore beneficial use, enhance aquatic habitat, and increase water quality to meet TMDL goals
- Existing WRAPs, TMDL, CWPM, and preliminary engineering reports will be utilized.
- Resource Concerns addressed: Sediments and Nutrients in Surface and Ground Water



Upper South Branch Buffalo River - 090201060601

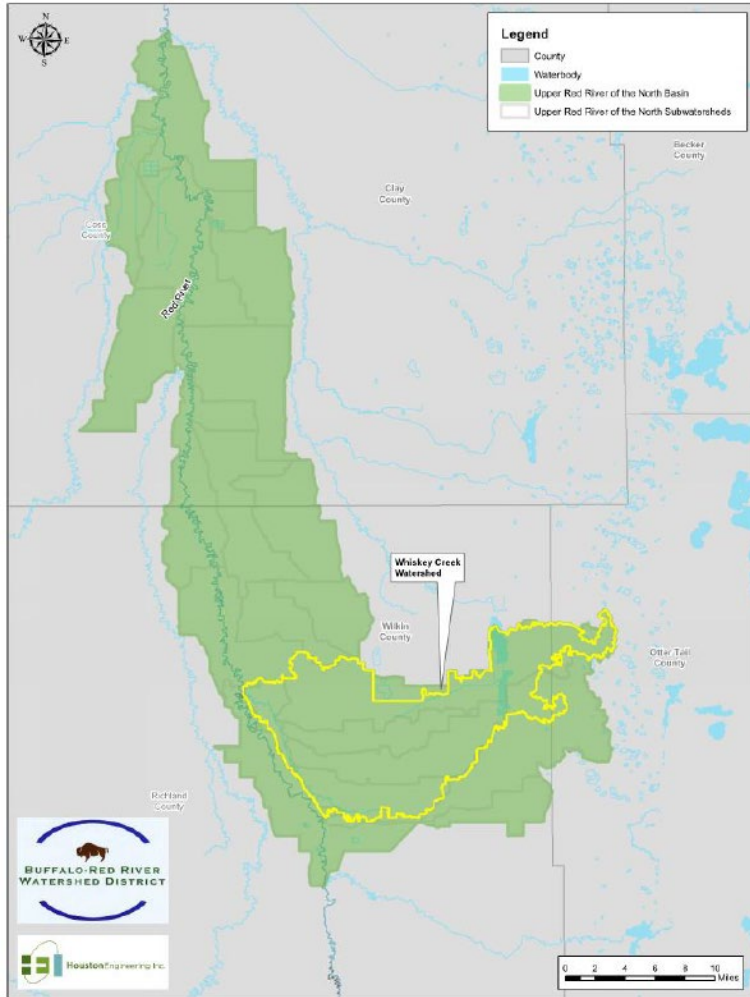


Upper South Branch Buffalo River - 090201060601

- Approximately 80,000 acres of cropland in watershed
- Many impairments including turbidity, E. coli, low DO, and aquatic habitat.
- Implementation phase (first year) to meet TMDL goals
- Buffalo-Red River Watershed District is lead agency with assistance from NRCS, Wilkin SWCD, and Otter Tail SWCD.
- Resource Concerns addressed: Sheet and Rill Erosion, Streambank Erosion, Gully Erosion, Nutrients and Sediments Transported to Surface Water



Whiskey Creek - 090201040204



Whiskey Creek - 090201040204



- Approximately 90,000 acres of cropland in watershed
- Many impairments including turbidity, E. coli, low DO, and aquatic habitat.
- Implementation phase (last year) to meet TMDL goals. Plan was approved in 2019.
- Buffalo-Red River Watershed District is lead agency with assistance from NRCS, Wilkin SWCD, and Otter Tail SWCD.
- Resource Concern addressed: Nutrients and Sediments Transported to Surface Water



Whiskey Creek - 090201040204

- Highlights from progress report:
 - Utilized RIM easements to re-meander and re-vegetate streambank.
 - 5.2 miles of the channel have been restored (6.5 miles remaining in plan)
 - 39 side water inlets have been installed (59 remain in plan)
 - TSS load has been decreased by 1,538 tons/year.

- <https://youtu.be/AzXYYfhelE>





United States Department of Agriculture



Natural
Resources
Conservation
Service

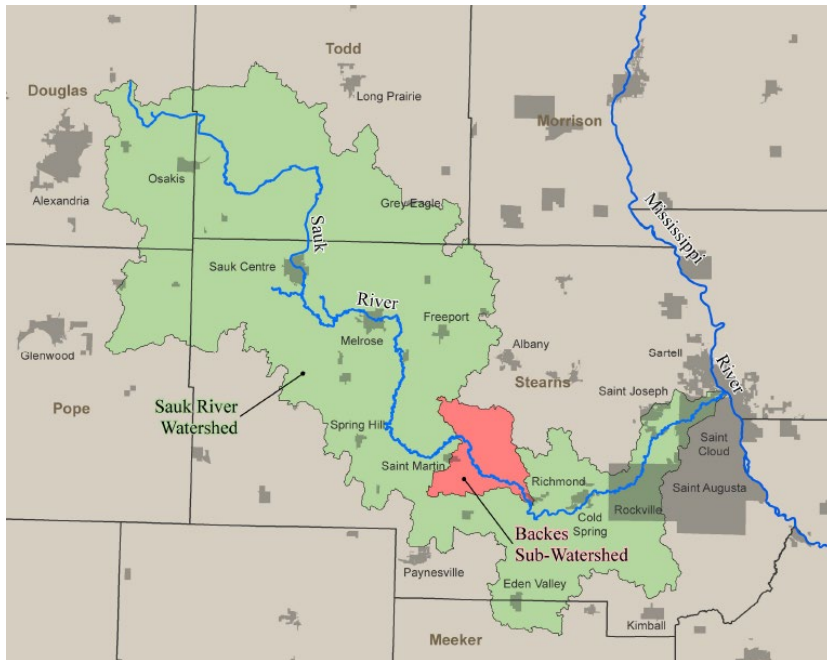


MRBI Submissions FY2024

Natural
Resources
Conservation
Service

nrcs.usda.gov/

Backes Lake - 070102020507



Backes Lake - 070102020507



- Approximately 26,500 acres of cropland in watershed, 100+ registered feedlots with a total of over 18,000 Animal Units. 11 feedlots were considered “noncompliant” at the time the plan was written.
- Many impairments including E. coli, nutrients in water.
- Implementation phase to meet TMDL goals. Plan was implemented in 2022.
- Stearns County SWCD is lead agency with assistance from the Sauk River Watershed District, NRCS, U of M Center for a Changing Landscape, and The Nature Conservancy.
- Resource Concerns addressed: Nutrients and Sediments Transported to Surface Water, Sheet and Rill Erosion, Gully Erosion



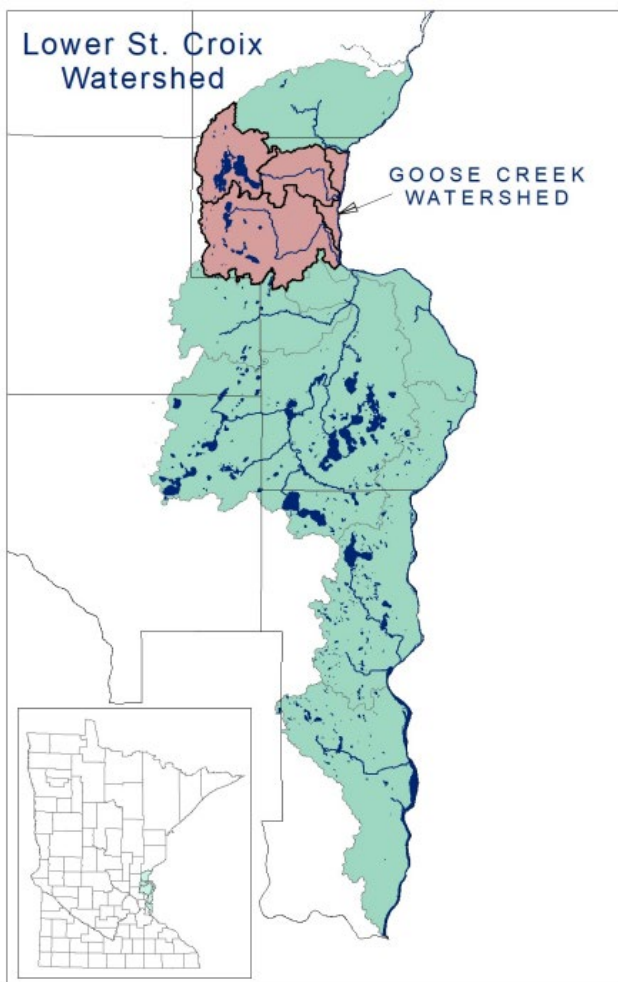
Backes Lake - 070102020507



- Highlights from progress report:
 - Trainings, workshops, and outreach events were held to publicize the project.
 - Participation was promising in FY2022 but dropped significantly in FY2023 due to several factors including increased construction costs, interest rates, and inflation. Interested producers have either deferred their applications or delayed their projects.
 - Cover crops, erosion control projects, and nutrient management have all been implemented.
 - Staff continues to meet producers to explain the project.



Goose Creek - 070300050205



Goose Creek - 070300050205



- Land use is split almost evenly between cropland (20,000 ac), grassland (21,000 ac) and woodland (26,000 ac).
- Many impairments including E. coli, nutrients in water.
- Implementation phase to meet TMDL goals. Plan was implemented in 2020.
- Chisago County SWCD is lead agency with assistance from the NRCS.
- Resource Concerns addressed: Nutrients and Sediments Transported to Surface Water, Sheet and Rill Erosion, Gully Erosion



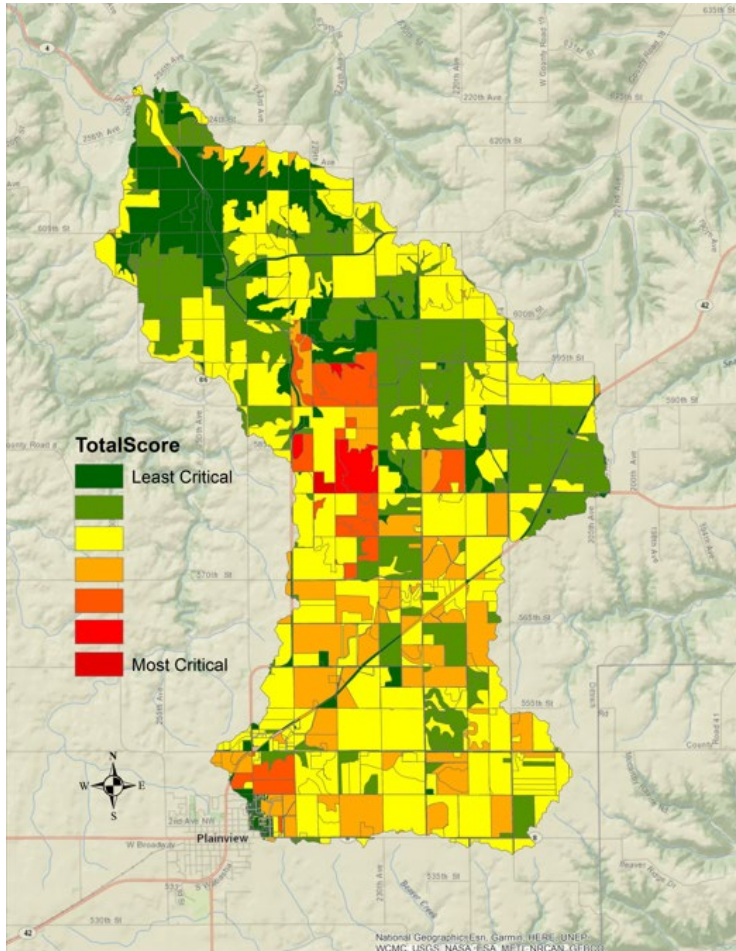
Goose Creek - 070300050205



- Highlights from progress report:
 - 7 contracts have been completed, resulting in a total reduction of 142 lb/year of phosphorus, 143 tons/year of TSS, and 128 tons/year of soil.
 - 5 projects are scheduled to be completed this fall.
 - Waitlist of landowners/producers who want to participate when more funds become available.



West Indian Creek - 070400040510



West Indian Creek - 070400040510



- Approximately 17,000 acres of cropland in the watershed, as well as 22 registered feedlots.
- While there are no impairments for nitrogen, phosphorus, or TSS, the WRAPS report does have measurable goals for these pollutants.
- Implementation phase to meet TMDL goals. Plan was implemented in 2022.
- Wabasha County SWCD is lead agency with assistance from the NRCS. Potential assistance from DNR, MPCA, MDA, and BWSR.
- Resource Concern addressed: Nutrients and Sediments
Transported to Surface Water

West Indian Creek - 070400040510



- Highlights from progress report:
 - Several hundreds of acres were planted to cover crops last fall.
 - 3 grassed waterway/grade stabilization projects have been completed and 4 more are in progress.
 - TSS loading has been reduced by 58 tons/year
 - Total phosphorus loading has been reduced by 58 lbs/year
 - Total nitrogen loading has been reduced by 1,670 lbs/year
 - Many producers are interested in participating in the project when more funding becomes available.



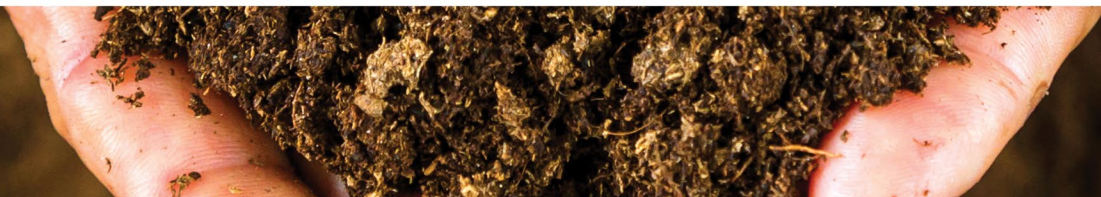


United States Department of Agriculture

Questions?



Courtney Cheever
State Water Quality Specialist
507-509-3028
Courtney.Cheever@usda.gov



Natural
Resources
Conservation
Service

nrcs.usda.gov/

USDA is an equal opportunity provider, employer, and lender.

In accordance with Federal civil rights law and U.S. Department of Agriculture (USDA) civil rights regulations and policies, the USDA, its Agencies, offices, and employees, and institutions participating in or administering USDA programs are prohibited from discriminating based on race, color, national origin, religion, sex, gender identity (including gender expression), sexual orientation, disability, age, marital status, family/parental status, income derived from a public assistance program, political beliefs, or reprisal or retaliation for prior civil rights activity, in any program or activity conducted or funded by USDA (not all bases apply to all programs). Remedies and complaint filing deadlines vary by program or incident.

Persons with disabilities who require alternative means of communication for program information (e.g., Braille, large print, audiotope, American Sign Language, etc.) should contact the responsible Agency or USDA's TARGET Center at (202) 720-2600 (voice and TTY) or contact USDA through the Federal Relay Service at (800) 877-8339. Additionally, program information may be made available in languages other than English.

To file a program discrimination complaint, complete the USDA Program Discrimination Complaint Form, AD-3027, found online at [How to File a Program Discrimination Complaint](#) and at any USDA office or write a letter addressed to USDA and provide in the letter all of the information requested in the form. To request a copy of the complaint form, call (866) 632-9992. Submit your completed form or letter to USDA by: (1) mail: U.S. Department of Agriculture, Office of the Assistant Secretary for Civil Rights, 1400 Independence Avenue, SW, Washington, D.C. 20250-9410; (2) fax: (202) 690-7442; or (3) email: program.intake@usda.gov.

