

State Specific Training Module for Georgia

Purpose of this Module

This module will provide some general information that TSPs need to conduct conservation planning in our state. This information is general in nature so the TSP may need to follow up with additional reading or training to make sure they have the knowledge, skill, licenses and certifications to conduct conservation planning in this state.

Review of State Laws

This state requires that certain CNMP planners for CAFO operations be certified as a Certified Nutrient Management Plan Specialist by the Georgia Department of Agriculture.

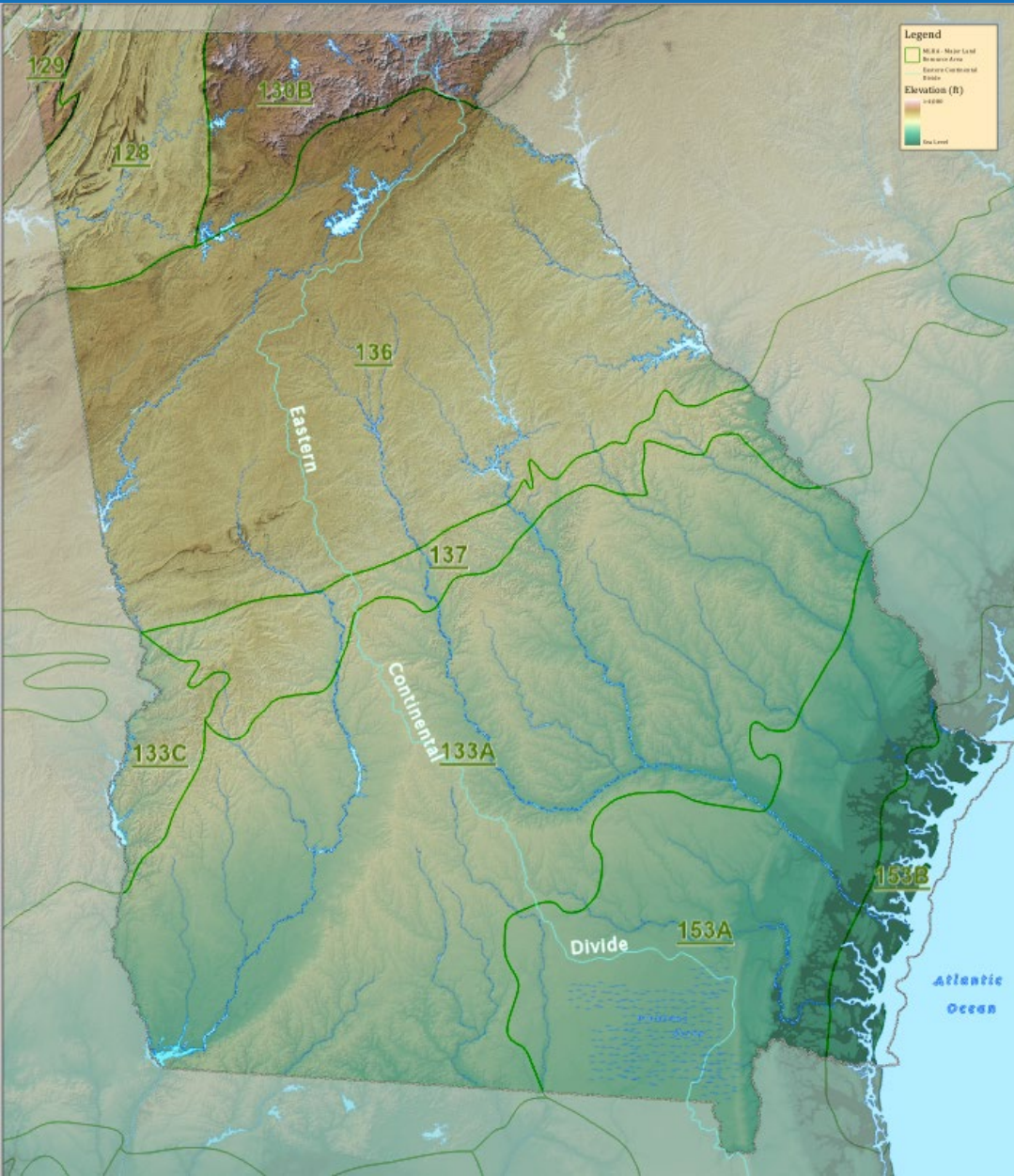
This state requires a Georgia Professional Engineer license for the practice of most engineering activities within the state.

For most irrigation-related activities in Georgia, a Certified Irrigation Design (CID) or PE license is required.

Review of State FOTG Requirements

Conservation Practice Standards

- All Georgia-adopted conservation practice standards and supporting documents such as implementation requirements and guidesheets are found on the Field Office Technical Guide (FOTG) at [Georgia | Field Office Technical Guide | NRCS - USDA](#).
- Resource Concerns and Planning Criteria are found in 3.2.a



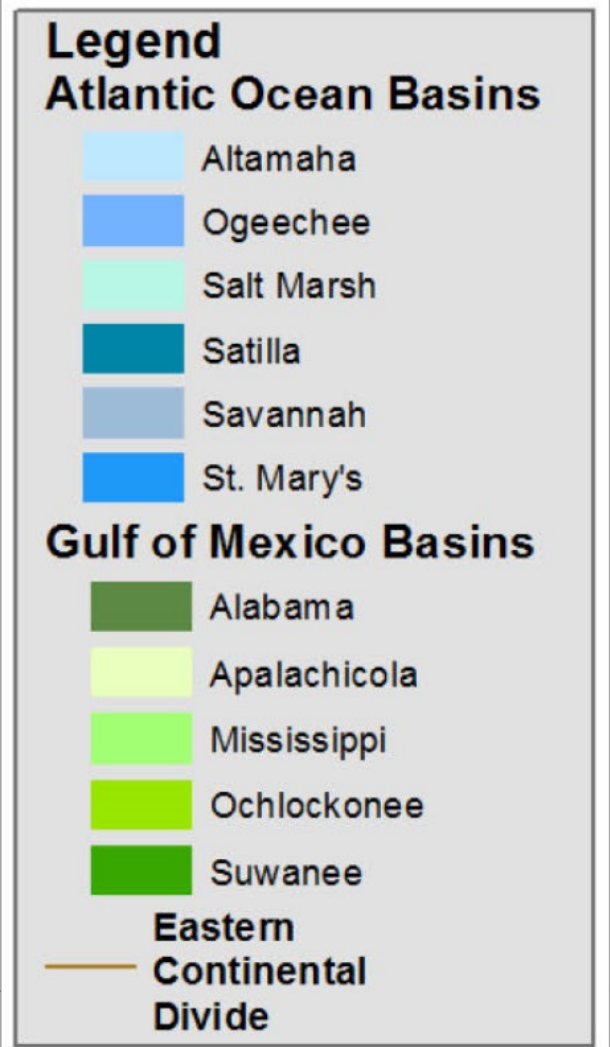
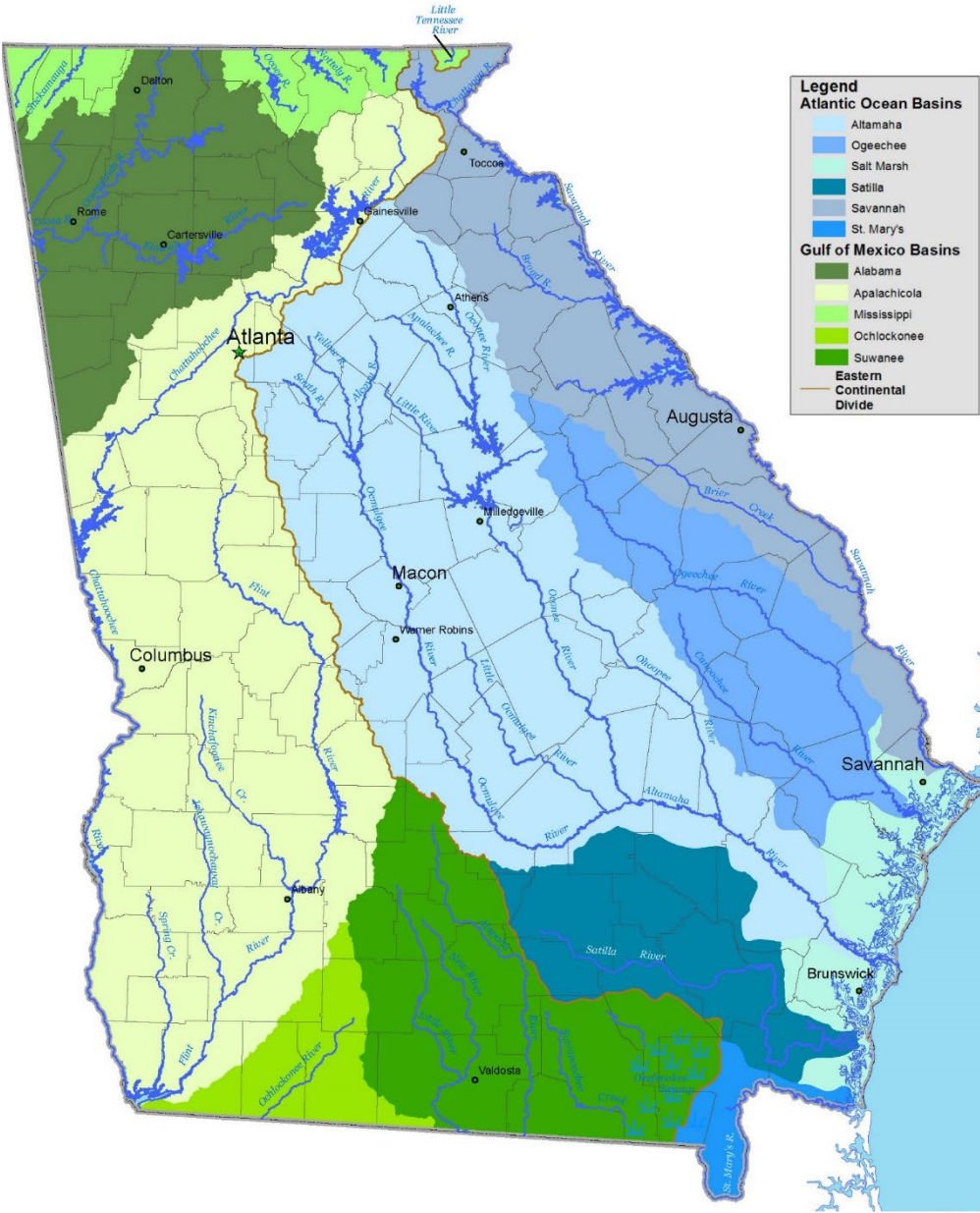
Land & Surface Water Resource

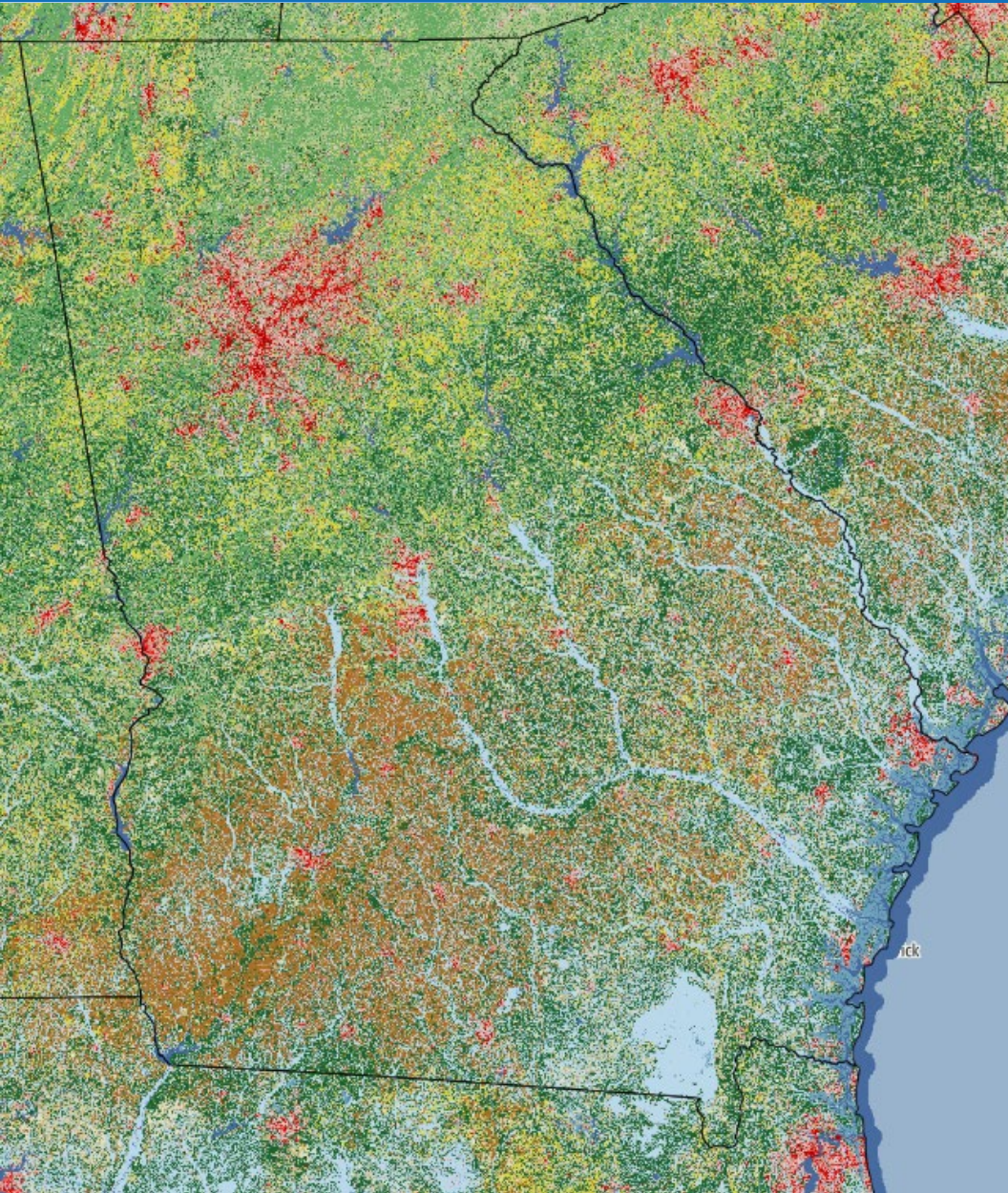
Major Land Resource Areas*

Symbol	Name
128	Southern Appalachian Ridges and Valleys 1,806,700 ac.
129	Sand Mountain 147,100 ac.
130B	Southern Blue Ridge 1,689,900 ac.
133A	Southern Coastal Plain 13,653,000 ac.
133C	Gulf Coastal Plain 729,900 ac.
136	Southern Piedmont 10,969,400 ac.
137	Carolina and Georgia Sand Hills 2,010,100 ac.
153A	Atlantic Coast Flatwoods 5,633,500 ac.
153B	Tidewater Area 1,100,900 ac.










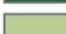










Total 37,740,500 ac.

Georgia Rivers' Ocean Outlets





NLCD Land Cover Classification Legend

-  11 Open Water
-  12 Perennial Ice/ Snow
-  21 Developed, Open Space
-  22 Developed, Low Intensity
-  23 Developed, Medium Intensity
-  24 Developed, High Intensity
-  31 Barren Land (Rock/Sand/Clay)
-  41 Deciduous Forest
-  42 Evergreen Forest
-  43 Mixed Forest
-  51 Dwarf Scrub*
-  52 Shrub/Scrub
-  71 Grassland/Herbaceous
-  72 Sedge/Herbaceous*
-  73 Lichens*
-  74 Moss*
-  81 Pasture/Hay
-  82 Cultivated Crops
-  90 Woody Wetlands
-  95 Emergent Herbaceous Wetlands

* Alaska only

Top 10 Georgia Commodities

in order of value



Broilers
\$3.0 billion
24.1% of total



Cotton
\$727.8 million
6.0% of total



Peanuts
\$678.0 million
5.5% of total



Beef
\$663.4 million
5.4% of total



Timber
\$649.8 million
5.3% of total



Greenhouse
\$566.2 million
4.6% of total



Corn
\$358.1 million
2.9% of total



Blueberries
\$304.2 million
2.5% of total

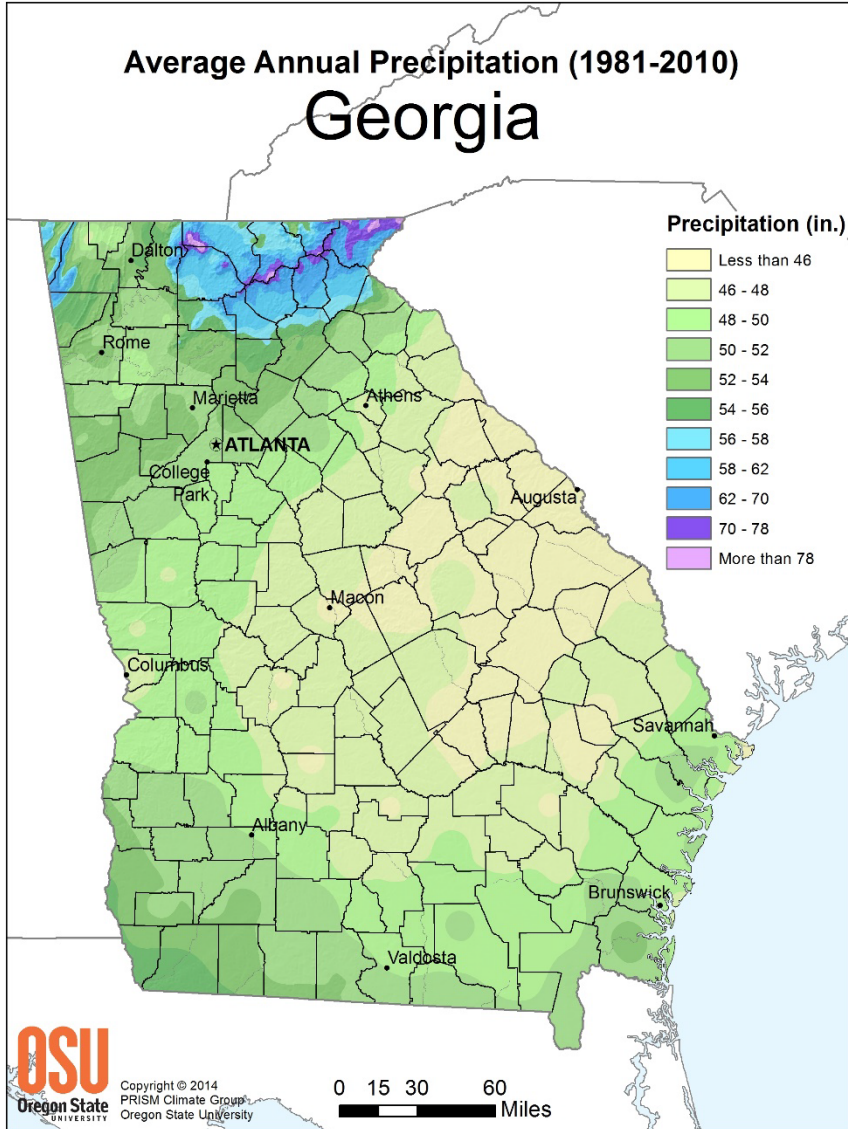


Dairy
\$297.0 million
2.4% of total



Hay
\$291.2 million
2.4% of total

[Farm Gate Value -
Publications |
Agribusiness and
Economic Development
\(uga.edu\)](#)



Precipitation Data

Review of Important Resource Issues

Threatened and Endangered Species (T&E)

A link to the T&E species found in Georgia may be found on the FOTG Section 2.4.f

A T&E candidate species, the Gopher Tortoise, is common in the coastal plain region of the state. This species may be present on forest land uses and impacts to the species should be a consideration when planning within this area. Contact the NRCS State Biologist or the State Wildlife Department for additional information on planning considerations for the Gopher Tortoise.

Review of Important Resource Issues

Invasive Species

A link to the invasive species found in Georgia may be found on the FOTG Section 2.4.j

Special considerations may be needed for conservation planning when these species are present.

Review of Major Land Uses

The NRI found that Georgia's four largest land uses were forest, developed land, cropland, and pasture in 2012. These four land uses accounted for 88 percent of Georgia's total surface area of 37,740,500 acres.

Landuse	Percentage
Forest	57.8
Developed	12.3
Cropland	11.1
Pasture	7.3
Federal	5.5
Other	3.2
Water	2.9

Forest Type and Management

Georgia is home to about 250 species of trees according to the Georgia Forestry Commission (Bishop 2001). The Forest Inventory and Analysis (FIA) program of the USDA Forest Service groups these trees by forest type. Pine is at least partly dominant in 56 percent of the forests and wholly dominant in 45 percent. Loblolly-shortleaf pine accounts for the single largest group. The longleaf-slash pine group is largely a planted group. Over the inventory period the trend has changed from primarily planting slash pine to an increased interest in restoring longleaf pine. Oak species are a major component of all the other forest type groups. The largest of these others is oak-hickory. The oak-gum-cypress is the wettest with some of its members able to grow in standing water.

Expected TSP Workflow

- The State Resource Conservationist (SRC) will be responsible for reviewing TSP conservation planning for the National Planner Designation.
- Subsequent conservation plans will be reviewed by the District Conservationist (DC) at the local USDA Service Center or SRC staff as appropriate.
- The SRC will conduct plan reviews for TSP planner designation renewals.
- TSPs will work with the local District Conservationist to make sure the proper environmental evaluations (NRCS.CPA.52) are completed.

Non-Discrimination Statement

In accordance with Federal civil rights law and U.S. Department of Agriculture (USDA) civil rights regulations and policies, the USDA, its Agencies, offices, and employees, and institutions participating in or administering USDA programs are prohibited from discriminating based on race, color, national origin, religion, sex, gender identity (including gender expression), sexual orientation, disability, age, marital status, family/parental status, income derived from a public assistance program, political beliefs, or reprisal or retaliation for prior civil rights activity, in any program or activity conducted or funded by USDA (not all bases apply to all programs). Remedies and complaint filing deadlines vary by program or incident.

Persons with disabilities who require alternative means of communication for program information (e.g., Braille, large print, audiotope, American Sign Language, etc.) should contact the responsible Agency or USDA's TARGET Center at (202) 720-2600 (voice and TTY) or contact USDA through the Federal Relay Service at (800) 877-8339. Additionally, program information may be made available in languages other than English.

To file a program discrimination complaint, complete the USDA Program Discrimination Complaint Form, AD-3027, found online at [How to File a Program Discrimination Complaint](#) and at any USDA office or write a letter addressed to USDA and provide in the letter all of the information requested in the form. To request a copy of the complaint form, call (866) 632-9992. Submit your completed form or letter to USDA by: (1) mail: U.S. Department of Agriculture, Office of the Assistant Secretary for Civil Rights, 1400 Independence Avenue, SW, Washington, D.C. 20250-9410; (2) fax: (202) 690-7442; or (3) email: program.intake@usda.gov.

USDA is an equal opportunity provider, employer, and lender.

Certificate of Completion

After viewing the State Specific Training module, please print and sign the completion certificate on the following slide.

The certificate is your acknowledgement that based on the information provided in this module, you have the proper knowledge, skills and ability to conduct planning in this State.

Within your NRCS Registry profile, enter the training and upload the signed certificate to verify completion.

STATE SPECIFIC TRAINING MODULE COMPLETION CERTIFICATE

I, _____ hereby verify I have viewed and understand the content of the *Georgia State*
TSP Name
Specific Training Module and affirm I have the knowledge, skills, and ability to conduct conservation planning
services in this state.

TSP Signature

Date