

State Specific Training Module for Colorado

Purpose of this Module

This module will provide some general information that TSPs need to conduct conservation planning in our state. This information is general in nature so the TSP may need to follow up with additional reading or training to make sure they have the knowledge, skill, licenses and certifications to conduct conservation planning in this state.

Review of State Laws

CNMP State Laws

- Animal Feeding Operations need to be evaluated for proximity to sensitive areas such as wetlands, ditches, and streams
- All CNMP plan documents will be developed through the use of the Manure Management Planner software program.
- There can be no discharge of nutrients to Waters of the State.

Review of State Laws and Administrative Rules

Engineering in Colorado

- For TSP's that plan, design, or check out NRCS practices that are specifically Engineering practices the TSP must follow State of Colorado rules and regulations found at the Colorado of Regulatory Affairs (DORA) website for Laws, Rules, and Policies:
 - [Architect, Engineer and Land Surveyor Homepage](#)
- A Colorado PE is required for Practices in which Engineering is the lead discipline.

Review of State Laws

Pest Management

- Colorado requires anyone applying or recommending restricted use pesticides to be certified.
- Colorado Department of Agriculture (CDA) is the Certifying agent in Colorado.
- CDA has several has several local agents spread across the state to assist you.

Review of State Laws

Pest Management

- To be an effective planner one must be able to use Win-PST
- Win-PST is a MS Windows-based program that evaluates risks of the use of pesticides.
- To learn more about Win-PST please contact the Colorado State TSP Coordinator.

Review of State Laws

Water Rights in Colorado

- Colorado like the majority of the Western United States operates on the “First in Time, First in Right” rule.
- When addressing any resource issue involving water one must inventory water rights
- Typical Conservation Practices involved would include but not be limited to: Any Irrigation related practice, spring development, and any water impoundment

Review of State Laws

Cultural Resources

- Any ground disturbing practice must be evaluated by a cultural resource specialist or permitted archeologist.
- State Historic Preservation Office (SHPO) consultation must be completed prior to ground disturbance (30 days).

Agronomy

- A Colorado CCA is required for practices in which a CCA is required.

Review of Field Office Tech Guide

[Field Office Technical Guide \(FOTG\) | Natural Resources Conservation Service \(usda.gov\)](#)

 An official website of the United States government [Here's how you know](#) 

[Subscribe](#)  [About NRCS](#) [farmers.gov](#) [USDA.gov](#) [State Offices](#)



Natural Resources Conservation Service
U.S. DEPARTMENT OF AGRICULTURE

 Search



CONSERVATION BASICS

GETTING ASSISTANCE

PROGRAMS & INITIATIVES

RESOURCES

NEWS & EVENTS

CONTACT



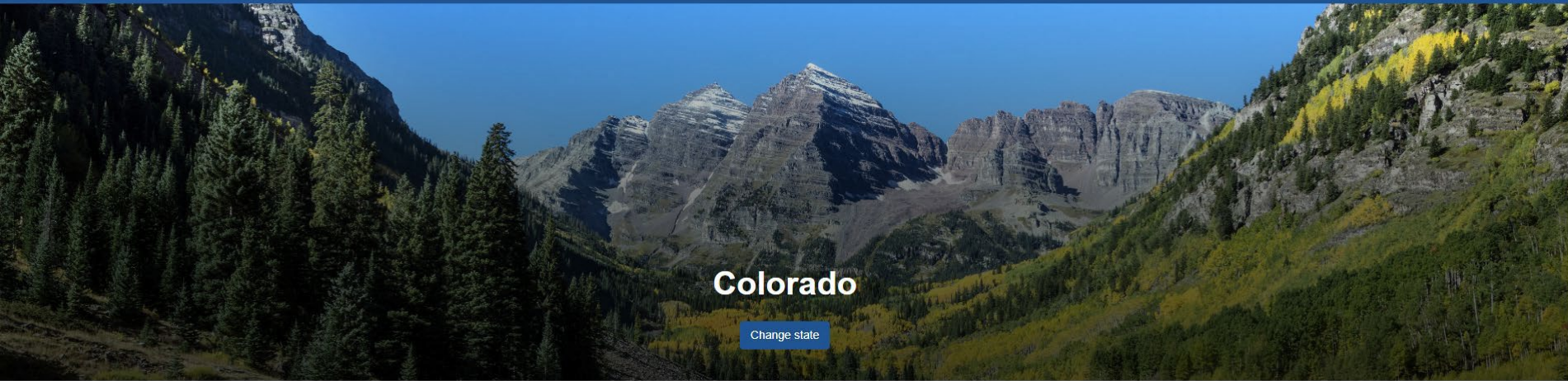
Field Office Technical Guide (FOTG)

[Home](#) > [Resources](#) > [Field Office Technical Guide \(FOTG\)](#)

Technical guides are the primary scientific references for NRCS. They contain technical information about the conservation of soil, water, air, and related plant and animal resources.

Review of Colorado Field Office Tech Guide

[Colorado](#) | [Field Office Technical Guide](#) | [NRCS - USDA](#)



Colorado

[Change state](#)

Keyboard Navigation Instructions

Export Grid Highlights Only

- Section 1 - General Resource References
- Section 2 - Natural and Cultural Resources Information
- Section 3 - Resource Concerns and Planning Criteria
- Section 4 - Practice Standards and Supporting Documents
- Section 5 - Conservation Effects

Document Title	Type	Pub Date	End Date	Subject	Keywords	Abstract	Size (kb)	Info
No documents to show.								

Review of Colorado Field Office Tech Guide

Section 1 - General Resource References

Conservation Activity

Cost Data

Erosion Prediction

Federal, State, Tribal Laws

Maps

Reference Lists

State Technical Guide Committee (STGC)

Technical Guide Notices

Technical Notes

Section 2 - Natural and Cultural Resources Information

Climatic Data

Cultural Resources Information

Ecological Site Descriptions and Range Sites

NRCS Resource Plans

Pastureland and Hayland Interpretations

Soils Information

Special Environmental Concerns

Windbreak Suitability Groups

Section 3 - Resource Concerns and Planning Criteria

Conservation Activity Plan (CAP)

CPAs, DIAs, CEMAs

CSP

Landowner Planning Workbooks

Legislated Programs (HELCS/WCC)

Planning Forms

Planning Guidance

Section 4 - Practice Standards and Supporting Documents

Index

Conservation Practice Standards & Support Documents

Section 5 - Conservation Effects

Conservation Practice Physical Effects (CPPE)

Review of Resource Issues in Colorado and Nationally

- Listed by order in the relevant 31 Soil Water Air Plants Animals + Cultural + Energy (SWAPA+C+E) Resource Concerns
- Follows through Resource Concern and Planning Criteria

Review of Resource Issues in Colorado

- Listed by order in the relevant 47 Soil Water Air Plants Animals + Cultural + Energy (SWAPA+C+E) Resource Concerns

Field Office Technical Guide | CO Help Log In

Keyboard Navigation Instructions

Section 1 - General Resource References

Section 2 - Natural and Cultural Resources Information

Section 3 - Resource Concerns and Planning Criteria

Conservation Activity Plan (CAP)

CPAs, DIAs, CEMAs

CSP

Landowner Planning Workbooks

Legislated Programs (HELC/WCC)

Planning Forms

Planning Guidance

Section 3 - Resource Concerns and Planning Criteria

Export Grid Highlights Only 1 - 2

Document Title	Type	Pub Date	End Date	Subject	Keywords	Abstract	Size (kb)	Info
2023 Resource Concern Fact Sheets	☞	2022-11-17	--	Conservation Planning, All Resources	Resource Concern Fact Sheets	Resource Concern Fact Sheets	--	📘 🔍
2023 Resource Concern List and Planning Criteria	☞	2023-03-29	--	Conservation Planning, All Resources	Resource concerns, planning criteria	2023 Resource Concern List and Planning Criteria	--	📘 🔍

1 - 2

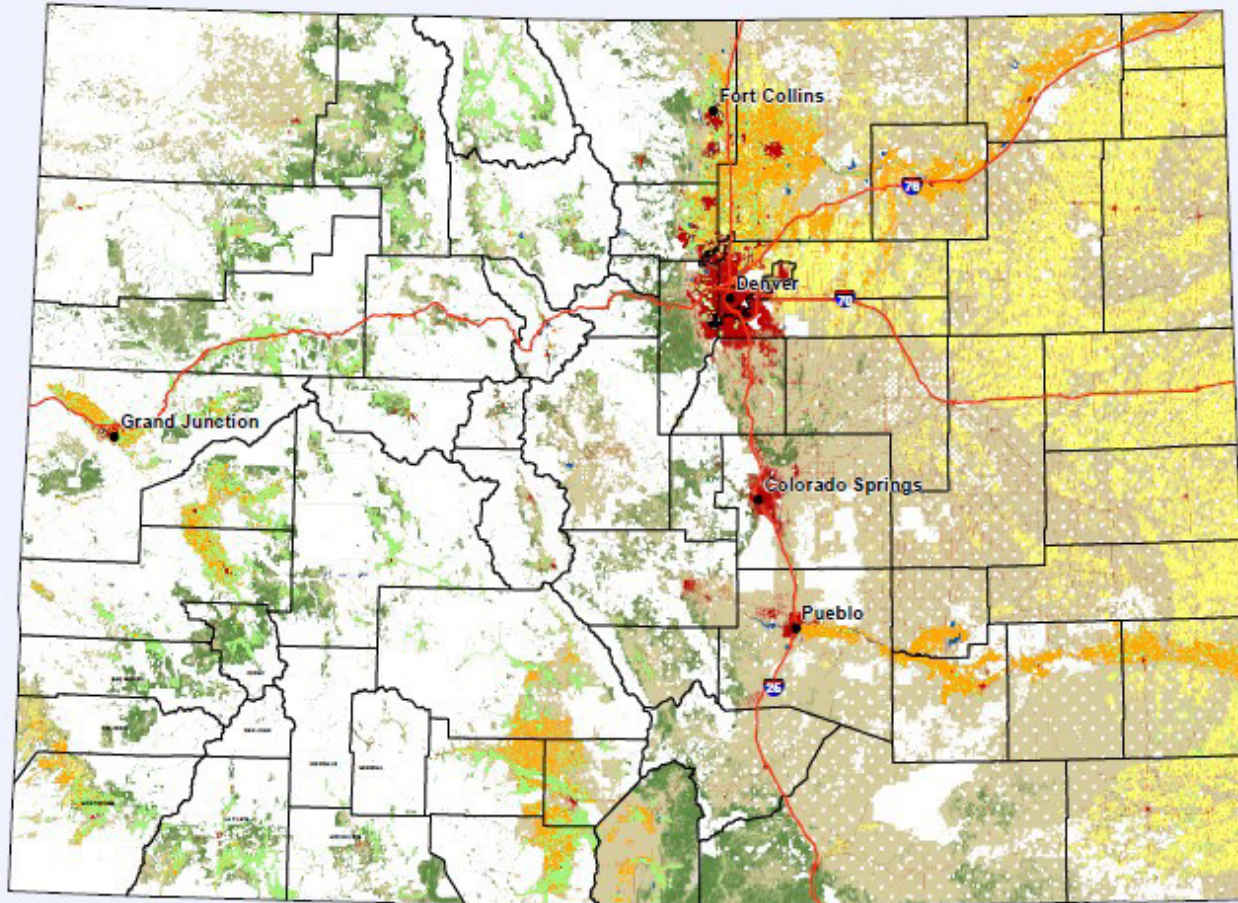
Review of Important Resource Issues in Colorado

Resource Concern Cause	Description of Concern	Land Use * Required Assessment	Resource Concern Component	Planning Criteria		Measurement & Assessment Tools		
<p>A resource concern (RC) is an expected degradation of the soil, water, air, plant, or animal resource base to an extent that the sustainability or intended use of the resource is impaired. Because NRCS quantifies or describes resource concerns as part of a comprehensive conservation planning process that includes client objectives, human and energy resources are considered components of the resource base. The "Cause" is the specific reason or threat to the resource that results in the resource concern.</p>			<p>For planning purposes, some resource concerns are divided into components where there is a clear distinction in the causal factors, the mitigating actions, and the anticipated environmental effect.</p>	<p>A planning criterion is a quantitative or qualitative method to assess the existing condition of the natural resources on a site to determine whether additional treatment is needed to address a specific potential resource concern.</p> <p>Planning Consideration</p> <p>A planning consideration is a description of potential actions or activities that should be considered to help address an identified resource concern and/or to address unintended consequences of an action. Planning considerations are identified for resource concerns when it is not appropriate or technologically feasible to identify specific criteria or a</p>		<p>Description of the technology or process for determining if assessment criteria are met.</p>		
				<p>Screening Level</p>	<p>Basic Assessment Level</p>			
				<p>Screening level criteria are defined, when appropriate, to identify sites with conditions that have little or no probability of needing additional treatment to address the specific resource concern. If the site meets the screening level criteria, then no other assessment is needed to document that planning criteria are met on this site. States can delete or edit nationally identified</p>	<p>Basic assessment level criteria are used when a site does not meet screening level criteria, or when no screening level criteria are defined. Assessment levels are also used when formulating and evaluating alternatives. National criteria establish the minimum for all sites. States may add state-specific criteria to address local conditions.</p>			

Review of Important Resource Issues in Colorado

- The 47 Resource Concerns and the associated Planning Criteria are foundational for plan development with in the 9-steps of conservation planning.
 - Planning Criteria for identified resource concerns must be appropriately completed to arrive at the preferred alternative

Colorado Private Lands

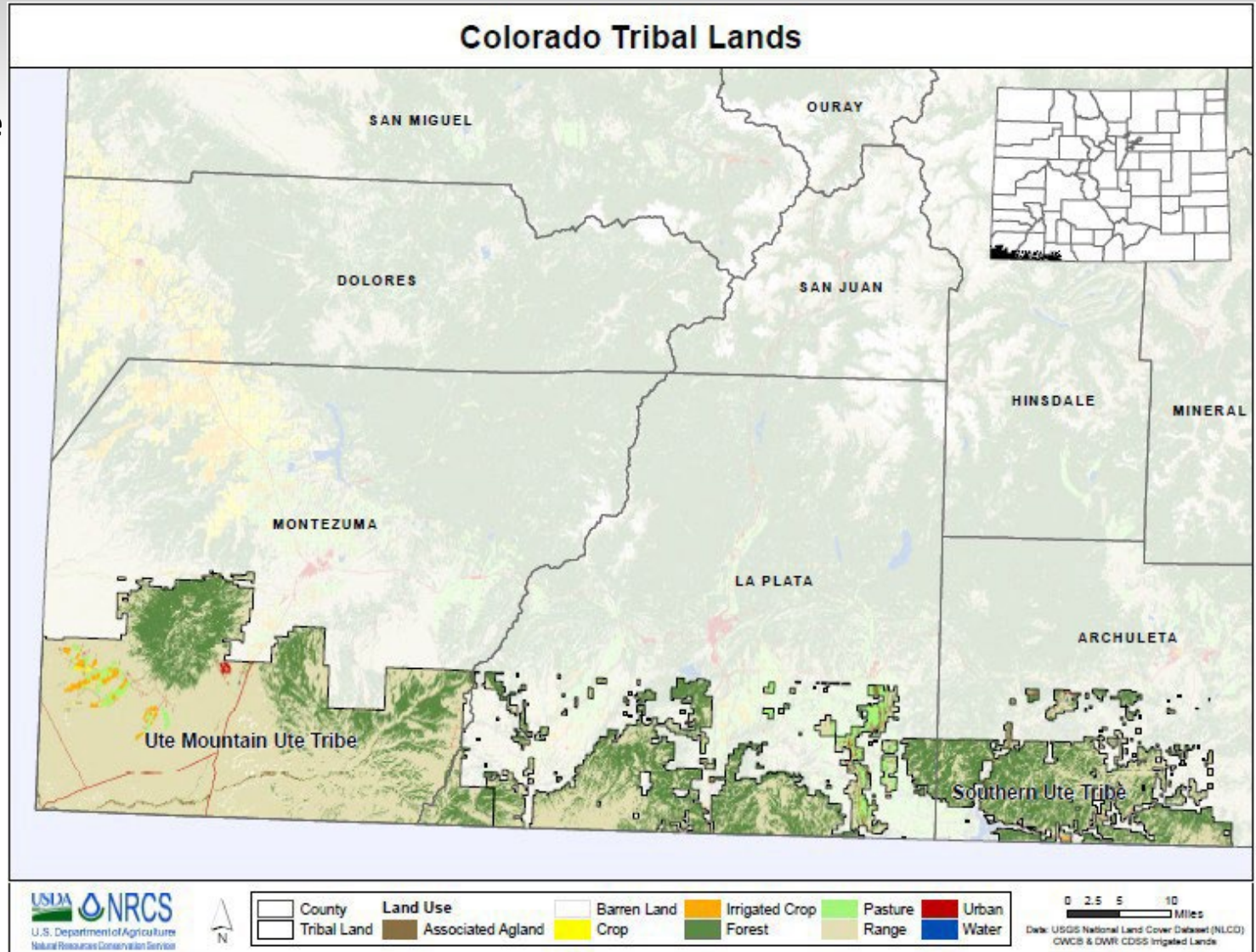


	County		Barren Land		Irrigated Crop*		Pasture		Urban
	Public Land		Associated Agland		Crop		Forest		Range
			Water						

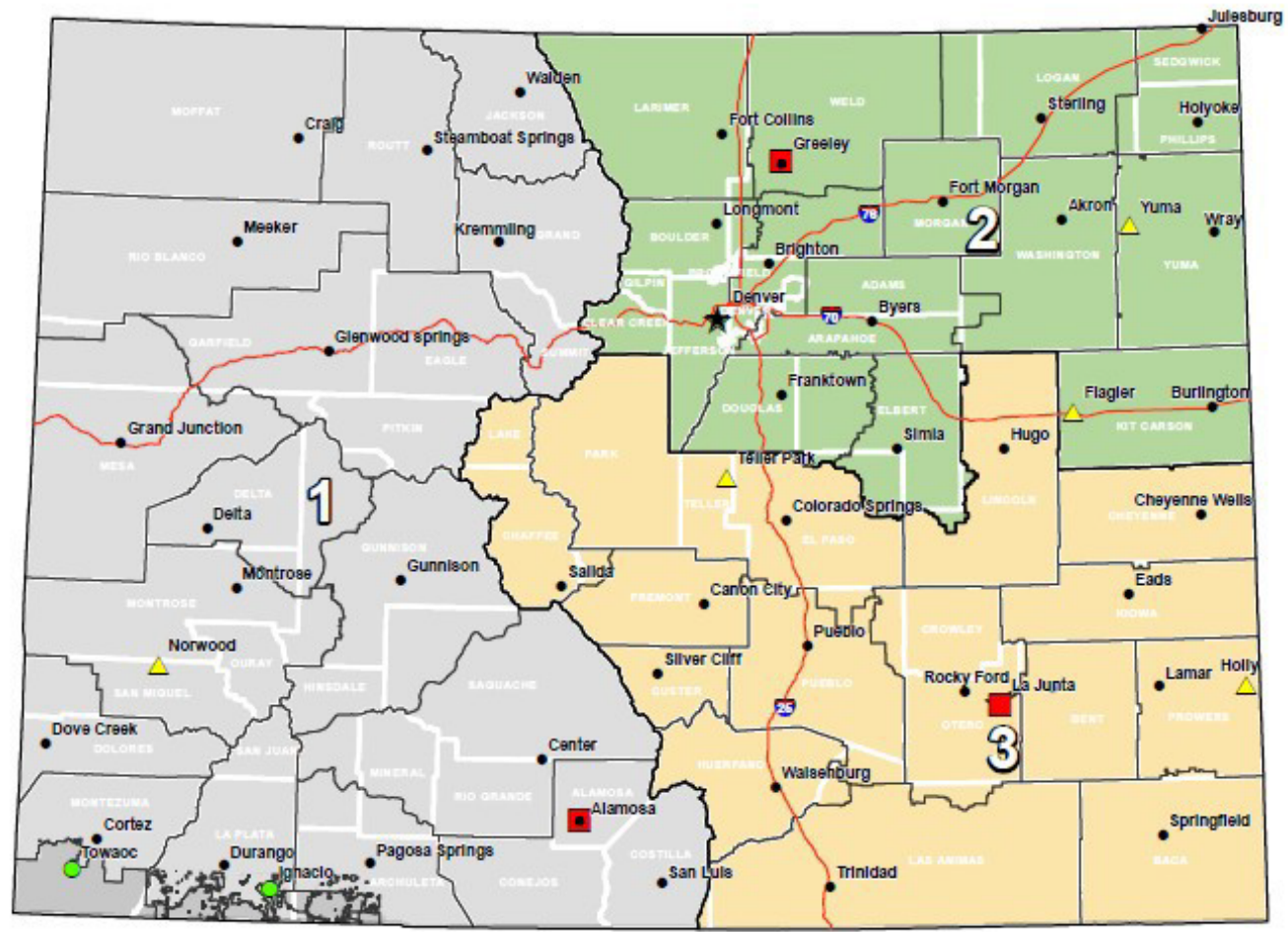
0 12.5 25 50 Miles

Data: USGS National Land Cover Dataset (NLCD)
 CWCS & DWR CDSS Irrigated Lands
 BLM Land Ownership
 *Irrigated Crop excludes Pasture

Take special note
of planning
activities on or
around Tribal
Lands



Colorado NRCS Service Centers



- Field Office
- Tribal Office
- Area Office
- NRCS Service Center
- Area 1
- Area 3
- ▲ District Office
- Area/Field Office
- ★ State Office
- County
- Area 2

0 12.5 25 50 Miles
Data: Natural Resources Conservation Service

Expected TSP Workflow

- The State Resource Conservationist (SRC) will be responsible for reviewing TSP conservation planning for the National Planner Certification.
- Subsequent conservation plans will be reviewed by the District Conservationist (DC) at the local USDA Service Center.
- The SRC will conduct plan reviews for TSP planner certification renewals.
- TSPs will work with the local District Conservationist to make sure the proper environmental evaluations (NRCS.CPA.52) are completed.

Certificate of Completion

After viewing the State Specific Training module, please print and sign the completion certificate on the following slide.

The certificate is your acknowledgement that based on the information provided in this module, you have the proper knowledge, skills and ability to conduct planning in this state.

Within your NRCS Registry profile, enter the training and upload the signed certificate to verify completion.



STATE SPECIFIC TRAINING MODULE COMPLETION CERTIFICATE

I, _____ hereby verify I have viewed and understand the content of *Colorado State*
TSP Name
Specific Training Module and affirm I have the knowledge, skills, and ability to conduct conservation planning
services in this state.

TSP Signature

Date

Non-Discrimination Statement

Non-Discrimination Policy

The U.S. Department of Agriculture (USDA) prohibits discrimination against its customers, employees and applicants for employment on the bases of race, color, national origin, age, disability, sex, gender identity, religion, reprisal, and where applicable, political beliefs, marital status, familial or parental status, sexual orientation, or all or part of an individual's income is derived from any public assistance program, or protected genetic information in employment or in any program or activity conducted or funded by the Department. (Not all prohibited bases apply to all programs and/or employment activities.)

To File an Employment Complaint

If you wish to file an employment complaint, you must contact your agency's EEO Counselor within 45 days of the date of the alleged discriminatory act, event, or in the case of a personnel action. Additional information can be found online at http://www.ascr.usda.gov/complaint_filing_file.html

To File a Program Complaint

If you wish to file a Civil Rights program complaint of discrimination, complete the USDA Program Discrimination Complaint Form, found online at http://www.ascr.usda.gov/complaint_filing_cust.html, or at any USDA office, or call (866) 632-9992 to request the form. You may also write a letter containing all of the information requested in the form. Send your completed complaint form or letter to us by mail at U.S. Department of Agriculture, Director, Office of Adjudication, 1400 Independence Avenue, S.W., Washington, D.C. 20250-9419, by fax at (202) 690-7442, or email at program.intake@usda.gov

Persons with Disabilities

Individuals who are deaf, hard of hearing or have speech disabilities and you wish to file either an EEO or program complaint please contact USDA through the Federal Relay Service at (800) 877-8339 or (800) 845-6136 (in Spanish).

Persons with disabilities, who wish to file a program complaint, please see information above on how to contact us by mail or by email. If you require alternative means of communication for program information (e.g., Braille, large print, audiotape, etc.), please contact USDA's TARGET Center at (202) 720-2600 (voice and TDD).

Supplemental Nutrition Assistance Program

For any other information dealing with Supplemental Nutrition Assistance Program (SNAP) issues, persons should either contact the USDA SNAP Hotline Number at (800) 221-5689, which is also in Spanish, or call the State Information/Hotline Numbers.

All Other Inquires

For any other information not pertaining to civil rights, please refer to the listing of the USDA Agencies and Offices.