

State Specific Training Module for Alabama

Purpose of this Module

This module will provide some general information that TSPs need to conduct conservation planning in our state. This information is general in nature so the TSP will need to follow up with additional reading, training, and work experience to make sure they have the knowledge, skill, licenses and certifications to conduct conservation planning in this state.

By no means do we suggest that these slides are adequate preparation to become a Certified Conservation Planner in Alabama. This designation requires years of education, training, and hands-on experience.

Alabama Specific Training

- Conservation for New Employees
 - Alabama offers a comprehensive planning course to meet Conservation Planning Part 2. The course covers land use planning addressing Soil, Water, Air, Plant, Animal, Human, and Energy resource concerns specific to Alabama. Modules include wildlife training, forestry training, nutrient management, pest management, comprehensive nutrient management, pastureland, cropland, etc.
 - The class is open to TSP's. Contact Alabama State TSP Contact for enrollment information.

State Specific Training & Deliverables for Certified Planners in Alabama

- Must be able to perform with supervision the following tools/tasks:
 - Water Erosion Prediction (RUSLE2 or most current technology)
 - Win-PST – Windows Pesticide Screening Tool
 - IPM Mitigation Tool (Pest Mngt. Considerations in Conservation Planning Worksheet)
 - [PCS \(Pasture Condition Scorecard\)](#)
 - Forage Animal Balance
 - Runoff Curve Number
 - Peak Runoff
 - [SVAP \(Stream Visual Assessment Protocol\)](#)

Review of State Laws

- Code of Alabama 1975 Title 34, Chapter 12 – Foresters - State Statute requires an Alabama Registered Forester license to practice forestry
- Code of Alabama 1975, Title 34, Chapter 11 - State Statute requires an Alabama Professional Engineering license to practice engineering
- Code of Alabama 1975, Title 2, Chapter 27 - State Statute - A Commercial Applicator Permit (License) is required for pesticide consultants.
- Code of Alabama 1975, Section 9.13.270 - State Statute - in order for a prescribed burn to have liability protection; the activity must be supervised by a Certified Prescribed Burn Manager.


Alabama Field Office Technical Guide ([FOTG](#))

- Exercise – Browse to Alabama’s web site



Welcome to the

NRCS Field Office Technical Guide

Select a state... 



About FOTG

Technical guides are the primary scientific references for NRCS. They contain technical information about the conservation of soil, water, air, and related plant and animal resources.

Technical guides used in each field office are localized so that they apply specifically to the geographic area for which they

FOTG Sections

Section 1 - General Resource References

- General state maps.
- Descriptions of Major Land Resource Areas, watershed information, and links to NRCS reference manuals and handbooks.
- Links to researchers, universities, and agencies we work

Section 3 - Resource Concerns and Planning Criteria

- NRCS Quality Criteria, which establish standards for resource conditions that help provide sustained use.

Section 4 - Practice Standards and Supporting Documents

NRCS Conservation Practice Standards that help field

Explore the FOTG – Sections 1-5

Click on each topic and subtopic, including links, read the information within to familiarize yourself with Alabama Specific information



Keyboard Navigation Instructions

Climatic Data

1 - 6

★ Featured 📄 Export CSV

Document Title (A-Z) 📄 Table 📄 Card

	Document Title	Type	Pub Date	End Date	Subject	Keywords	Abstract	Size	Info
<input type="checkbox"/>	AgACIS	📄	2007-05-01	--	Climatic Data	water, climate, precipitation	County specific climate data	--	📘 🗑️
<input type="checkbox"/>	Climatic Data - Alabama Climate Maps	🔗	2002-08-02	--	Climatic Data	climate, rainfall, frost, temperature	Alabama Climatic Maps is an ongoing project of the Cartographic Research Laboratory, which operates under the auspices of the College of Arts and Sciences at the University of Alabama.	--	📘 🗑️
<input type="checkbox"/>	Climatic Data - Field Office Guide to Climatic Data	🔗	1998-11-18	--	Climatic Data, Agronomy, Conservation Planning, Water	taps; frost; growth;wets	NRCSS Field Office Guide to Clamatic Data provides important information on the use of climatic data in conservation planning.	--	📘 🗑️

- Section 1 - General Resource References ▼
- Section 2 - Natural and Cultural Resources Information ▲
 - Climatic Data**
 - Cultural Resources Information ▼
 - Soils Information ▼
 - Threatened and Endangered Species
- Section 3 - Resource Concerns and Planning Criteria ▼
- Section 4 - Practice Standards and Supporting Documents ▼
- Section 5 - Conservation Effects ▼

Overview of Major Land Uses

Land Use	Acres
Forest*	21,761,700
Pasture	4,945,300
Crop	2,462,000
Developed	2,106,000
Water	1,172,300
Other Ag. Land	808,000
Emergent Herbaceous Wetlands	113,200
Barren (rock/sand/clay)	90,000
Total Alabama Acres	33,458,500

*Includes over 2 million acres of wooded wetlands

Common Conservation Practices applicable to Alabama landscapes

- The next few slides show commonly applied conservation practices by land use type.
- Review these commonly used standards and their associated job sheets, specifications, technical notes, design tools, etc.

Common Conservation Practices in Cropland

Nutrient Management (590) (ac)

Conservation Crop Rotation (328) (ac)

Residue and Tillage Management, No-Till (329) (ac)

Upland Wildlife Habitat Management (645) (ac)

Pest Management Systems (595) (ac)

Cover Crop (340) (ac)

Conservation Cover (327) (ac)

Contour Farming (330) (ac)

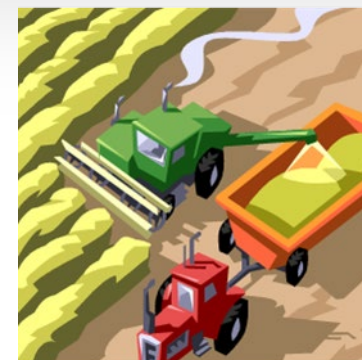


Common Conservation Practices in Cropland (continued)

- Forage Harvest Management (511) (ac)
- Field Border (386) (ac)
- Irrigation Water Management (449) (ac)
- Terrace (600) (ft)
- Filter Strip (393) (ac)
- Pasture and Hayland Planting (512) (ac)
- Tree/Shrub Site Preparation (490) (ac)
- Tree/Shrub Establishment (612) (ac)



Common Conservation Practices in Cropland (continued)



Grassed Waterway (412) (ac)

High Tunnel System (798) (ft²)

Sprinkler System (442) (ac)

Underground Outlet (620) (ft)

Restoration and Management of Rare and
Declining Habitats (643) (ac)

Critical Area Planting (342) (ac)

Irrigation System, Microirrigation (441) (ac)

Common Conservation Practices in Pastureland

Nutrient Management (590) (ac)

Prescribed Grazing (528) (ac)

Upland Wildlife Habitat Management (645) (ac)

Herbaceous Weed Control (315) (ac)

Pest Management Systems (595) (ac)

Heavy Use Area Protection (561) (ac)

Watering Facility (614) (no)

Fence (382) (ft)

Livestock Pipeline (516) (ft)



Common Conservation Practices in Pastureland (continued)

Forage and Biomass Planting (512) (ac)

Forage Harvest Management (511) (ac)

Prescribed Grazing (528A) (ac)

Water Well (642) (no)

Filter Strip (393) (ac)

Pumping Plant (533) (no)

Brush Management (314) (ac)

Critical Area Planting (342) (ac)



Common Conservation Practices in Forestland

Upland Wildlife Habitat Management (645) (ac)

Prescribed Burning (338) (ac)

Firebreak (394) (ft)

Forest Stand Improvement (666) (ac)

Tree/Shrub Site Preparation (490) (ac)

Tree/Shrub Establishment (612) (ac)

Herbaceous Weed Control (315) (ac)



Common Conservation Practices in Forestland (continued)

Restoration and Management of Rare
and Declining Habitats (643) (ac)
Conservation Cover (327) (ac)
Brush Management (314) (ac)
Access Control (472) (ac)
Critical Area Planting (342) (ac)
Riparian Forest Buffer (391) (ac)
Forest Trails and Landings (655) (ft)



Common Conservation Practices on Ag. Farmsteads

Upland Wildlife Habitat Management (645)

Comprehensive Nutrient Management
Plan - (102)

Agricultural Energy Assessment (228)

Prescribed Burning (338) (ac)

Farmstead Energy Improvement (374) (no)

Forest Stand Improvement (666) (ac)

Animal Mortality Facility (316) (no)

Nutrient Management (590) (ac)



Common Conservation Practices on on Ag. Farmsteads - continued

Waste Storage Facility (313) (no)

Roofs and Covers (367) (no)

Water Well (642) (no)

Herbaceous Weed Control (315) (ac)

Restoration and Management of Rare and Declining Habitats
(643) (ac)

Early Successional Habitat Development/Management (647) (ac)

Wetland Restoration (657) (ac)

Tree/Shrub Site Preparation (490)



Common Conservation Practices on on Ag. Farmsteads - continued

Access Control (472) (ac)

Tree/Shrub Establishment (612) (ac)

Pond (378) (no)

Critical Area Planting (342) (ac)

Conservation Cover (327) (ac)

Heavy Use Area Protection (561) (ac)

Mulching (484) (ac)

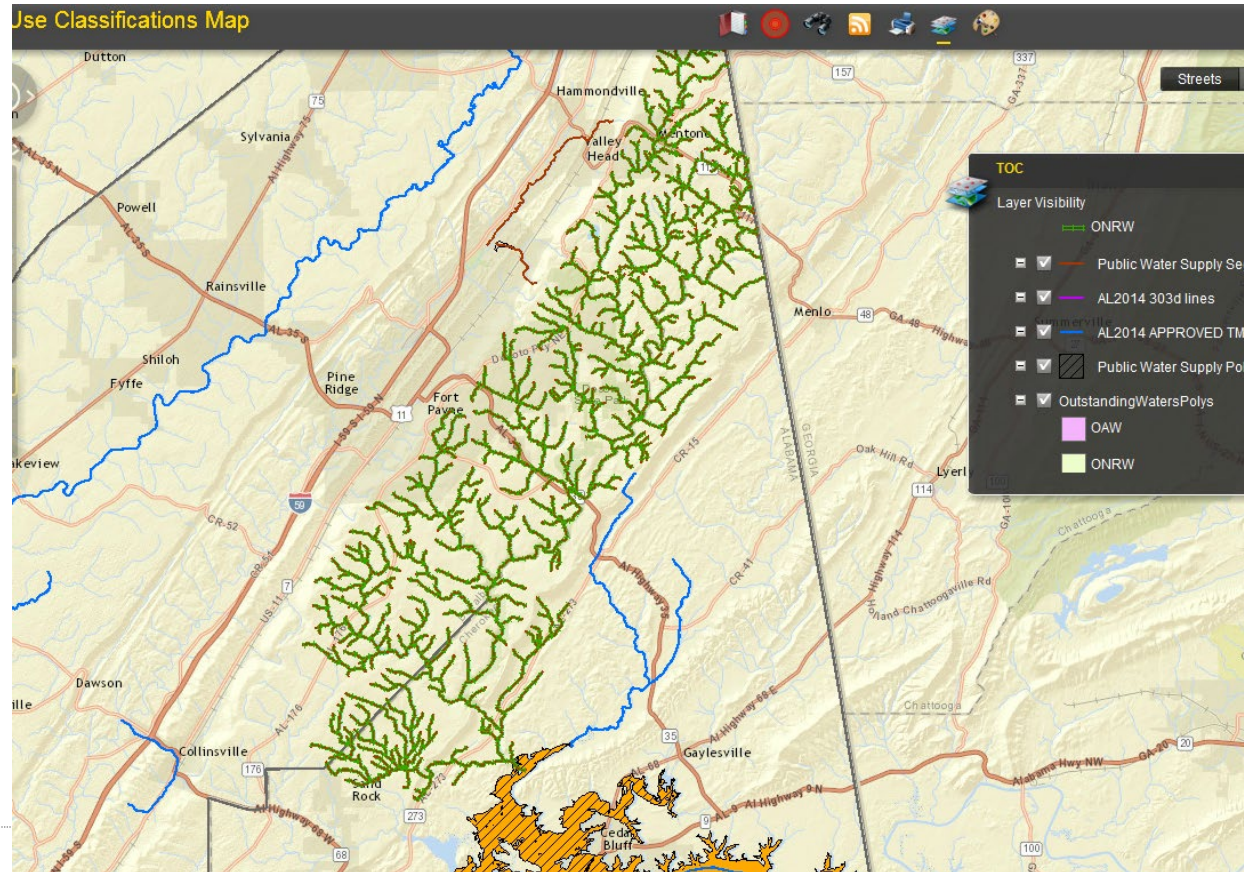


The entire state of Alabama drains into the Gulf of Mexico



Water Quality – See ADEM’s GIS Viewer for Use Classifications and Impairment Information

<https://aldem.maps.arcgis.com/apps/webappviewer/index.html?id=3cbefd3efc294e3fa81e486f0ffa7eda>



NUTRIENT MANAGEMENT OF ANIMAL WASTE APPLIED TO PROTECT WATER QUALITY



PRECISION APPLICATION OF NUTRIENTS AND PESTICIDES



A photograph of a corn field with rows of corn plants and a path leading through them. The corn plants are tall and green, with some tassels visible. The path is made of dirt and runs through the center of the field. In the background, there is a line of trees under a clear blue sky.

328 – Conservation Crop Rotation
345 – Residue Management – Reduced Till
590 – Nutrient Management

330 – Contour Farming
412 – Grassed Waterway
329 – Residue Management – No Till



Woodland Grazing Suitability

- Evaluate sites for:
 - Species composition
 - Amount of herbaceous and woody vegetation
 - Basal area
 - Soils





SITES NOT SUITABLE



VERY GOOD SITES

578 – Stream Crossing
528 – Prescribed Grazing
472 – Access Control
382 – Fence



528 – Prescribed Grazing 382 – Fence



Implement Plan

Plans
Specs
Job Sheets
Guide Sheets





Example system:
Stream crossing, use
exclusion, heavy use
area, fence.



645 – Upland Wildlife Habitat Management



**644 – Wetland Wildlife Habitat
Management**

**646 – Shallow Water Development &
Management**



645 – Upland Wildlife Habitat Management

338 – Prescribed Burning

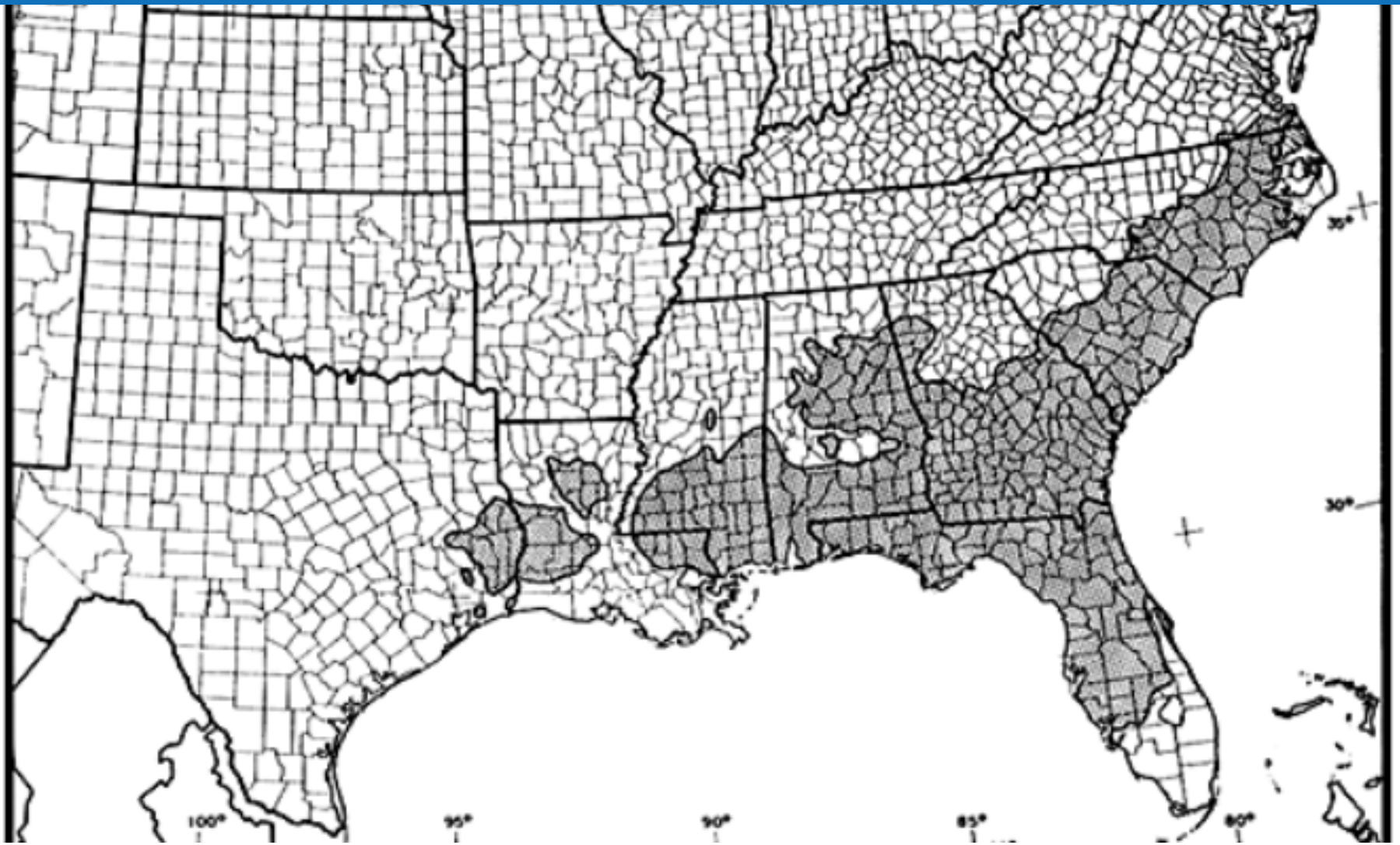




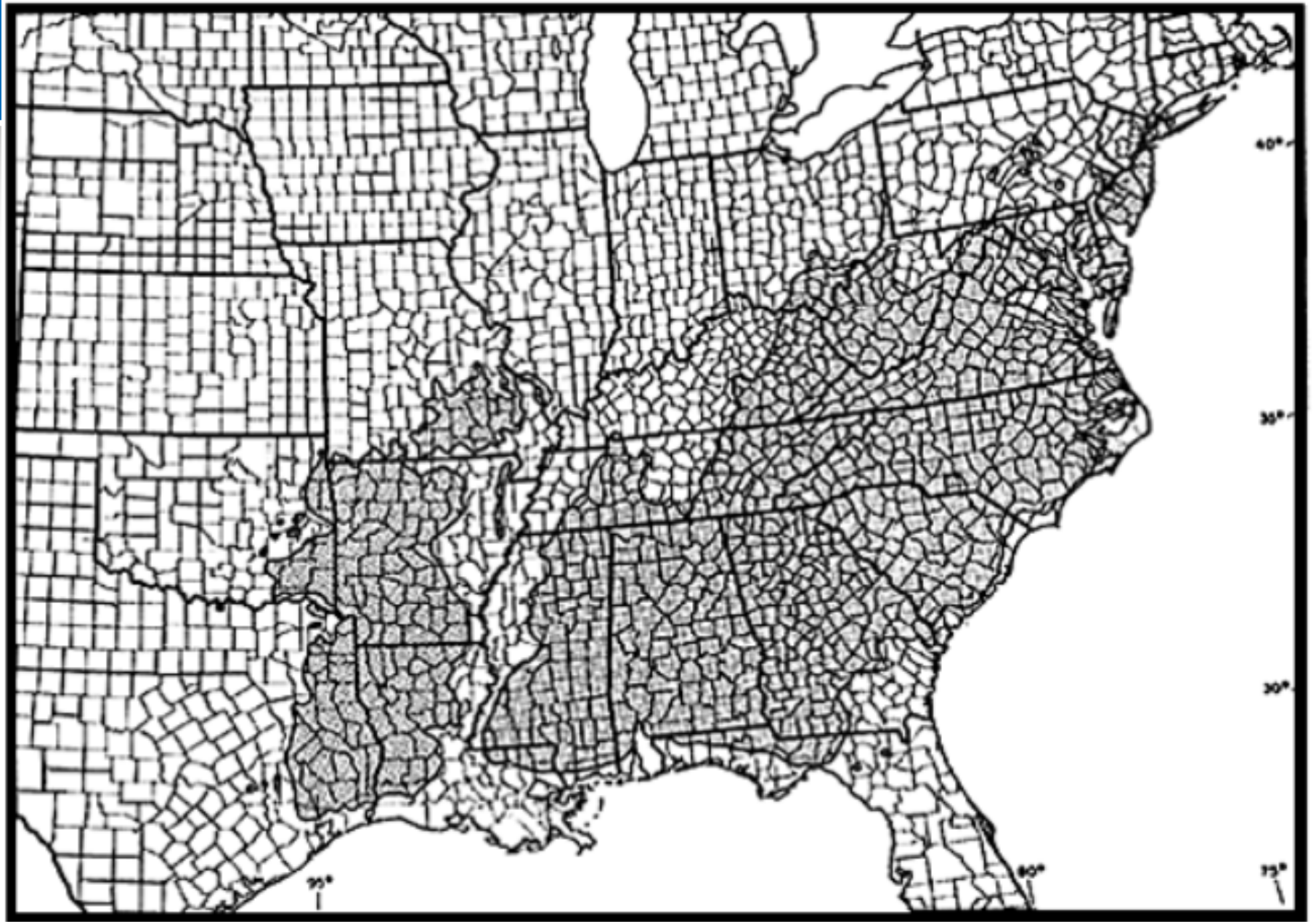
Gopher Tortoise

**643 – Restoration and
Management of Rare &
Declining Habitat**

338 – Prescribed Burning

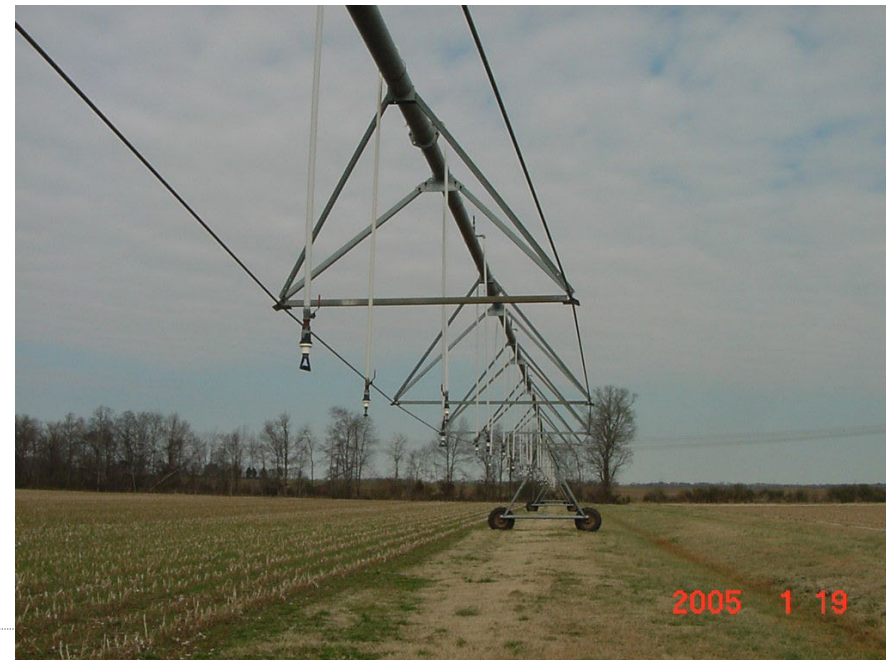


The native range of longleaf pine. (From Little, 1971.)



The native range of shortleaf pine. (From Little, 1971.)

Common Alabama engineering practices





Gully erosion treatment

Organic Farming & Small Farms



Micro-irrigation



New and innovative conservation – Rainwater collection at poultry facility



Energy Conservation



Record of Decisions

A black and white photograph of three men sitting outdoors in a wooded area. They are all wearing suits and hats. The man on the left is wearing a fedora and glasses. The man in the middle is wearing a cowboy hat and a leather jacket. The man on the right is wearing a fedora and glasses. They are all looking at a large document that is spread out on the ground in front of them. The man on the right is pointing at the document with his right hand. The background shows trees and a rocky outcrop.

Conservation Plan

Record of Decisions

Conservation Plan



The conservation plan is a plan developed for the landowner. The landowner should be presented with alternatives and the Landowner makes the decisions. This is why the conservation plan is referred to as a “Record of Decisions”. A plan is not just a series of recommendations by the planner. A plan is a well thought out document where the landowner is integrally involved throughout the process.

Expected TSP Workflow

- The Assistant State Conservationist for Technology/State TSP Contact will be responsible for reviewing TSP conservation planning for Certification.
- The first two plans prepared by a TSP as part of an EQIP contract will be Field Reviewed as part of Alabama's Quality Assurance Process.
- Subsequent conservation plans will be reviewed by the District Conservationist (DC) at the local USDA Service Center.
- Alabama will conduct plan reviews for TSP planner certification renewals.
- Alabama will spot check up to 10% of TSP work for technical adequacy.
- TSPs will work with the local District Conservationist to make sure the proper environmental evaluations (NRCS-CPA-52) are completed.

Alabama NRCS Website

<https://www.nrcs.usda.gov/conservation-basics/conservation-by-state/alabama>

 An official website of the United States government [Here's how you know](#) 

[Subscribe](#)  [About NRCS](#) [farmers.gov](#) [USDA.gov](#) [State Offices](#)



Natural Resources Conservation Service
U.S. DEPARTMENT OF AGRICULTURE

CONSERVATION BASICS

GETTING ASSISTANCE

PROGRAMS & INITIATIVES

RESOURCES

NEWS & EVENTS

CONTACT



Alabama



Non-Discrimination Statement

In accordance with Federal civil rights law and U.S. Department of Agriculture (USDA) civil rights regulations and policies, the USDA, its Agencies, offices, and employees, and institutions participating in or administering USDA programs are prohibited from discriminating based on race, color, national origin, religion, sex, gender identity (including gender expression), sexual orientation, disability, age, marital status, family/parental status, income derived from a public assistance program, political beliefs, or reprisal or retaliation for prior civil rights activity, in any program or activity conducted or funded by USDA (not all bases apply to all programs). Remedies and complaint filing deadlines vary by program or incident.

Persons with disabilities who require alternative means of communication for program information (e.g., Braille, large print, audiotope, American Sign Language, etc.) should contact the responsible Agency or USDA's TARGET Center at (202) 720-2600 (voice and TTY) or contact USDA through the Federal Relay Service at (800) 877-8339. Additionally, program information may be made available in languages other than English.

To file a program discrimination complaint, complete the USDA Program Discrimination Complaint Form, AD-3027, found online at [How to File a Program Discrimination Complaint](#) and at any USDA office or write a letter addressed to USDA and provide in the letter all of the information requested in the form. To request a copy of the complaint form, call (866) 632-9992. Submit your completed form or letter to USDA by: (1) mail: U.S. Department of Agriculture, Office of the Assistant Secretary for Civil Rights, 1400 Independence Avenue, SW, Washington, D.C. 20250-9410; (2) fax: (202) 690-7442; or (3) email: program.intake@usda.gov.

USDA is an equal opportunity provider, employer, and lender.

Certificate of Completion

After viewing the State Specific Training module, please print and sign the completion certificate on the following slide.

The certificate is your acknowledgement that based on the information provided in this module, you have the proper knowledge, skills and ability to conduct planning in this State.

Within your NRCS Registry profile, enter the training and upload the signed certificate to verify completion.



STATE SPECIFIC TRAINING MODULE COMPLETION CERTIFICATE

I, _____ hereby verify I have viewed and understand the content of the *Alabama* State
TSP Name
Specific Training Module and affirm I have the knowledge, skills, and ability to conduct conservation planning
services in this state.

TSP Signature

Date