



United States Department of Agriculture

Tennessee NRCS Programs



Natural
Resources
Conservation
Service



Natural
Resources
Conservation
Service

nrcs.usda.gov/

EQIP Report

Robert Boettcher

EQIP Program Manager

Nashville State Office | Programs

801 Broadway, Nashville, TN 37203

Phone: (615) 277-2544

Email: robert.boettcher@usda.gov | Website: www.tn.nrcs.usda.gov



EQIP FY23 Information

- June 2, 2023 – Obligation deadline for EQIP, RCPP EQIP, and EQIP-CIC applications.
- FY23 EQIP Allocation : \$42,182,344
 - EQIP General- \$34,634,000
 - \$26,128,000 General allocation
 - \$8,506,000 March Funds assessment
 - NWQI- \$634,600
 - MRBI-\$2,429,536
 - Golden Warbler- \$111,260
 - Joint Chief- \$949,667
 - EQIP IRA- \$3,423,281
- Obligated : \$23,780,000 on 607 contracts (61%)



Inflation Reduction Act (IRA)



Inflation Reduction Act (IRA) Sneak peak

- IRA funds are only available for Climate Smart Practices and Enhancements
 - And any required supporting/facilitating practices
 - Same list of FY23 practices/enhancements already released
- Required to allocate 5% BFR, 5% SD, and 10% Wildlife (EQIP)
 - 5% BFR, 5% SD (CSP)

- Established program policy will continue to be used
- Ensuring Equity is key
- Contracts cannot extend beyond September 30, 2031



United States
Department of
Agriculture

Natural Resources Conservation Service

Climate-Smart Agriculture and Forestry (CSAF) Mitigation Activities List ^[1] FY2023



Climate Change Mitigation Practice Categories

- Soil Health
- Nitrogen Management
- Livestock Partnership
- Grazing and Pasture
- Agroforestry, Forestry, and Upland Wildlife Habitat
- Restoration of Disturbed Lands
- Energy, Combustion, and Electricity Efficiency
- Wetlands
- Rice (N/A TN)



| Climate Change Mitigation Practice Categories | Code | Conservation Practice Standard Name ⁽²⁾ (units) | CSP Enhancement Code | Conservation Stewardship Program (CSP) Bundle and Enhancement Activity |
|---|---------------------------------|---|---|---|
| Soil Health | | | B000BFF1 | Buffer Bundle#1* |
| | | | B000CPL24 | Cropland soil health management system* |
| | | | B000CPL25 | Climate smart advanced soil health* |
| | 327 | Conservation Cover (acres) | E327A | Conservation cover for pollinators and beneficial insects |
| | | | E327B | Establish Monarch butterfly habitat |
| | 328 | Conservation Crop Rotation (acres) | E328A | Resource conserving crop rotation |
| | | | E328B | Improved resource conserving crop rotation |
| | | | E328E | Soil health crop rotation |
| | | | E328F | Modifications to improve soil health and increase soil organic matter |
| | | | E328G | Crop rotation on recently converted CRP grass/legume cover for soil organic matter improvement |
| | | | E328N | Intercropping to improve soil health |
| | | | E328O | Perennial grain crop conservation rotation |
| | 329 | Residue and Tillage Management, No Till (acres) | E329A | No till to reduce soil erosion |
| | | | E329B | No till to reduce tillage induced particulate matter |
| | | | E329C | No till to increase plant-available moisture |
| | | | E329D | No till system to increase soil health and soil organic matter content |
| | | | E329E | No till to reduce energy |
| | 332 | Contour Buffer Strips (acres) | None Available | |
| | 340 | Cover Crop (acres) | E340A | Cover crop to reduce soil erosion |
| | | | E340B | Intensive cover cropping to increase soil health and soil organic matter content |
| | | | E340C | Use of multi-species cover crops to improve soil health and increase soil organic matter |
| | | | E340D | Intensive orchard/vineyard floor cover cropping to increase soil health |
| | | | E340F | Cover crop to minimize soil compaction |
| | | | E340G | Cover crop to reduce water quality degradation by utilizing excess soil nutrients |
| | | | E340H | Cover crop to suppress excessive weed pressures and break pest cycles |
| | | | E340I | Using cover crops for biological strip till |
| | | | 345 | Residue and Tillage Management, Reduced Till (acres) |
| | E345B | Reduced tillage to reduce tillage induced particulate matter | | |
| | E345C | Reduced tillage to increase plant-available moisture | | |
| | E345D | Reduced tillage to increase soil health and soil organic matter content | | |
| | E345E | Reduced tillage to reduce energy use | | |
| | 386 | Field Border (acres) | E386A | Enhanced field borders to reduce soil erosion along the edge(s) of a field |
| | | | E386B | Enhanced field borders to increase carbon storage along the edge(s) of the field |
| | | | E386C | Enhanced field borders to decrease particulate emissions along the edge(s) of the field |
| | | | E386D | Enhanced field borders to increase food for pollinators along the edge(s) of a field |
| | | | E386E | Enhanced field borders to increase wildlife food and habitat along the edge(s) of a field |
| | 393 | Filter Strips (acres) | E393A | Extend existing filter strip to reduce water quality impacts |
| | 412 | Grassed Waterways (acres) | E412A | Enhance a grassed waterway |
| | 484 | Mulching (acres) | E484A | Mulching to improve soil health |
| | | | E484B | Reduce particulate matter emissions by using orchard or vineyard generated woody materials as mulch |
| E484C | | | Reduce particulate matter emissions by using orchard or vineyard generated woody materials as mulch | |
| 585 | Stripcropping (acres) | None Available | | |
| 601 | Vegetative Barriers (feet) | | | |
| 603 | Herbaceous Wind Barriers (feet) | | | |



| Climate Change Mitigation Practice Categories | Code | Conservation Practice Standard Name ^[2] (units) | CSP Enhancement Code | Conservation Stewardship Program (CSP) Bundle and Enhancement Activity |
|---|------|--|----------------------|---|
| Nitrogen Management | 590 | Nutrient Management (acres) | E590A | Improving nutrient uptake efficiency and reducing risk of nutrient losses |
| | | | E590B | Reduce risks of nutrient loss to surface water by utilizing precision agriculture technologies |
| | | | E590C | Improving nutrient uptake efficiency and reducing risk of nutrient losses on pasture |
| | | | E590D | Reduce risks of nutrient losses to surface and groundwater by increasing setback awareness via precision technology |
| Livestock Partnership | 366 | Anaerobic Digester (number) | None Available | |
| | 632 | Waste Separation Facility (number)* | | |



| | | | | |
|---------------------|-------|---|-------|--|
| Grazing and Pasture | 512 | Pasture and Hay Planting (acres) | E512A | Cropland conversion to grass-based agriculture to reduce soil erosion |
| | | | E512B | Forage plantings that help increase organic matter in depleted soils |
| | | | E512C | Cropland conversion to grass for soil organic matter improvement |
| | | | E512D | Forage plantings that help increase organic matter in depleted soils |
| | | | E512E | Forage and biomass planting that produces feedstock for biofuels or energy production |
| | | | E512I | Establish pollinator and/or beneficial insect and/or monarch habitat |
| | | | E512J | Establish wildlife corridors to provide habitat continuity or access to water |
| | | | E512L | Diversifying forage base with interseeding forbs and legumes to increase pasture quality |
| | | | E512M | Forage plantings that improve wildlife habitat cover and shelter or structure and composition |
| | 528 | Prescribed Grazing (acres) | E528A | Maintaining quantity and quality of forage for animal health and productivity |
| | | | E528D | Grazing management for improving quantity and quality of food or cover and shelter for wildlife |
| | | | E528E | Improved grazing management for enhanced plant structure and composition for wildlife |
| | | | E528F | Stockpiling cool season forage to improve structure and composition or plant productivity and health |
| | | | E528G | Improved grazing management on pasture for plant productivity and health with monitoring activities |
| | | | E528H | Prescribed grazing to improve/maintain riparian and watershed function-elevated water temperature |
| | | | E528I | Grazing management that protects sensitive areas -surface or ground water from nutrients |
| | | | E528J | Prescribed grazing on pastureland that improves riparian and watershed function |
| | | | E528L | Prescribed grazing that improves or maintains riparian and watershed function-erosion |
| | | | E528M | Grazing management that protects sensitive areas from gully erosion |
| | | | E528O | Clipping mature forages to set back vegetative growth for improved forage quality |
| | | | E528P | Implementing Bale or Swath Grazing to increase organic matter and reduce nutrients in surface water |
| | | | E528R | Management intensive rotational grazing |
| | | | E528S | Soil Health Improvements on Pasture |
| | E528T | Grazing to Reduce Wildfire Risks on Forests | | |
| | 550 | Range Planting (acres) | E550A | Range planting for increasing/maintaining organic matter |
| | | | E550B | Range planting for improving forage, browse, or cover for wildlife |



| Climate Change Mitigation Practice Categories | Code | Conservation Practice Standard Name ^[2] (units) | CSP Enhancement Code | Conservation Stewardship Program (CSP) Bundle and Enhancement Activity |
|--|--|--|--|---|
| Agroforestry, Forestry and Upland Wildlife Habitat | 311 | Alley Cropping (acres) | None Available | |
| | 342 | Critical Area Planting (acres) | | |
| | 379 | Forest Farming (acres) | | |
| | 380 | Windbreaks/Shelterbelt Establishment and Renovation (feet) | | |
| | 381 | Silvopasture (acres) | E381A | Silvopasture to improve wildlife habitat |
| | 390 | Riparian Herbaceous Cover (acres) | E390A | Increase riparian herbaceous cover width for sediment and nutrient reduction |
| | | | E390B | Increase riparian herbaceous cover width to enhance wildlife habitat |
| | 391 | Riparian Forest Buffer (acres) | E391A | Increase riparian forest buffer width for sediment and nutrient reduction |
| | | | E391B | Increase stream shading for stream temperature reduction |
| | | | E391C | Increase riparian forest buffer width to enhance wildlife habitat |
| | 420 | Wildlife Habitat Planting (acres)* | E420A | Establish pollinator habitat* |
| | | | E420B | Establish monarch butterfly habitat* |
| | 422 | Hedgerow Planting (feet) | None Available | |
| | 612 | Tree/Shrub Establishment (acres) | E612A | Cropland conversion to trees or shrubs for long term improvement of water quality |
| | | | E612B | Planting for high carbon sequestration rate |
| | | | E612C | Establishing tree/shrub species to restore native plant communities |
| | | | E612G | Tree/shrub planting for wildlife food |
| | 645 | Upland Wildlife Habitat Management (acres) | E645B | Manage existing shrub thickets to provide adequate shelter for wildlife |
| | | | E645C | Edge feathering for wildlife cover |
| | 666 | Forest Stand Improvement (acres)* | E666A | Maintaining and improving forest soil quality* |
| | | | E666D | Forest management to enhance understory vegetation* |
| | | | E666E | Reduce height of the forest understory to limit wildfire risk* |
| | | | E666F | Reduce forest stand density to create open stand structure* |
| E666H | | | Increase on-site carbon storage* | |
| E666I | | | Crop tree management for mast production* | |
| E666J | | | Facilitating oak forest regeneration* | |
| E666K | | | Creating structural diversity with patch openings* | |
| E666L | | | Forest Stand Improvement to rehabilitate degraded hardwood stands* | |
| E666P | | | Summer roosting habitat for native forest-dwelling bat species* | |
| E666R | | | Forest songbird habitat maintenance* | |
| E666S | Facilitating longleaf pine regeneration and establishment* | | | |



| | | | | |
|--|-----|---|----------------|---|
| Restoration of Disturbed Lands | 453 | Land Reclamation, Landslide Treatment (acres) | None Available | |
| | 543 | Land Reclamation, Abandoned Mined Land (acres) ^[3] | None Available | |
| Energy, Combustion, and Electricity Efficiency | 372 | Combustion System Improvement (number) | None Available | |
| | 374 | Energy Efficient Agricultural Operation (number)* | None Available | |
| | | | E533C | Install VFDs on pumps[4] * |
| | | | E533D | Complete pumping plant evaluation for energy savings[4] * |
| | 672 | Energy Efficient Building Envelope (number)* | None Available | |
| | 670 | Energy Efficient Lighting System (number)* | None Available | |
| Wetlands | 657 | Wetland Restoration (acres)* | None Available | |
| Rice | 449 | Irrigation Water Management (acres) ^[4] | E449B | Alternated Wetting and Drying (AWD) of rice fields |

Activities highlighted have been added to the list in FY23.

*Noted activities are added to the list as “provisional.” These practices, associated enhancements, and bundles are being added under the premise that they may provide benefits, and a quantification methodology will be evaluated during the fiscal year. Practices may be removed from the mitigation practice list in a subsequent fiscal year if quantification is not possible.

Planned IRA Ranking Pools –EQIP IRA



- Beginning Farmer/Rancher- Required 5%
- Socially Disadvantaged-Required 5%
- Wildlife 10%
- Urban
- IRA Area pools (1 pool for each of the 4 Areas)
 - Categories by land use-
 - Cropland
 - Pasture
 - Forest
 - Other
 - Associated Ag Land, Farmstead, and other land will be eligible in all categories
 - Categories allow for separate ranking questions, distribution of funds by category
- 7/7/2023- IRA ranking deadline
- 8/4/2023- IRA Obligation deadline



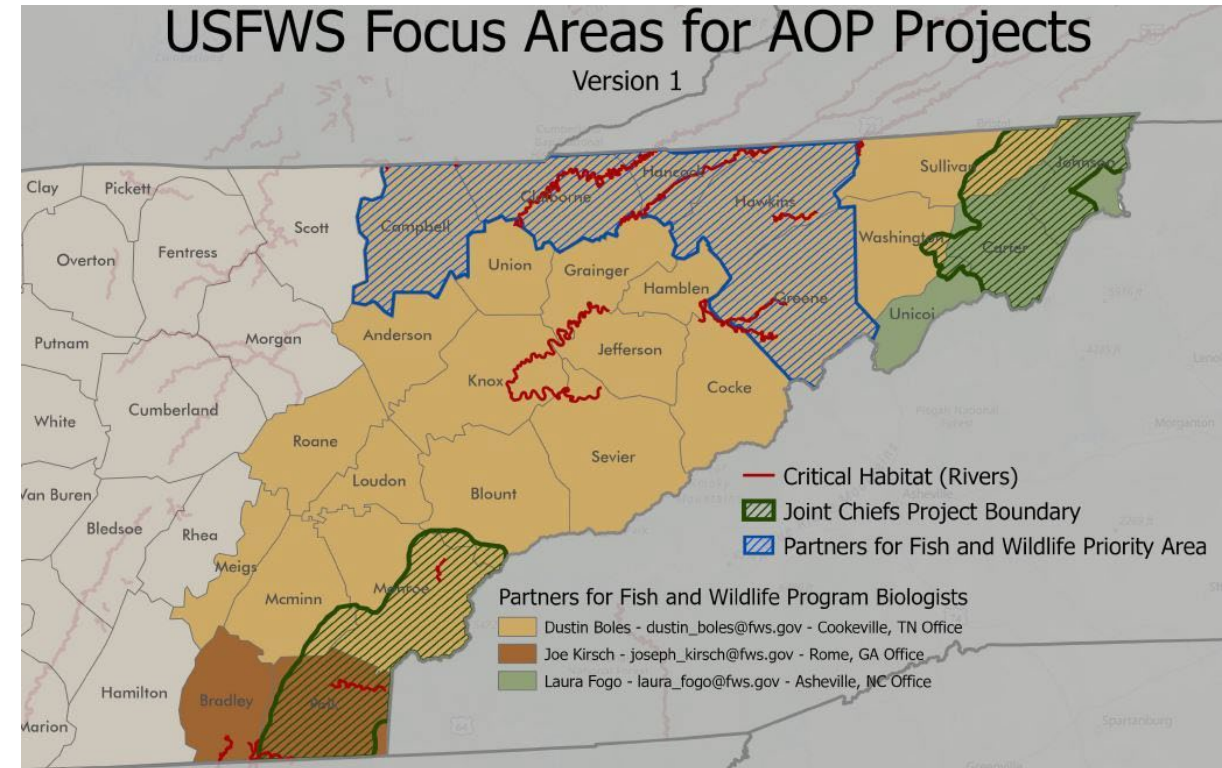
Updates and new Opportunities

- Additional sign-up opportunity for Aquatic Habitat for at Risk Species in Eastern Tennessee
- NRCS announces \$75 million to assist producers transitioning to organic as part of USDA's Organic Transition Initiative
- USDA offers disaster assistance to farmers in Tennessee impacted by recent storms and tornadoes



Additional sign-up opportunity for Aquatic Habitat for at Risk Species in Eastern Tennessee

- 2nd signup Joint Chiefs Aquatic Habitat for at Risk Species
 - June 9 2023 application cutoff
- Polk, McMinn, Monroe, Blount, Washington, Unicoi, Carter, Johnson, and Sullivan in eastern Tennessee.
 - high-priority catchments within the Cherokee National Forest as well as private lands within three miles of the forest boundary



NRCS announces \$75 million to assist producers transitioning to organic as part of USDA's Organic Transition Initiative



- Organic Transition Initiative
- EQIP Program
 - Application cutoff June 15 2023
- Supports conservation practices required for organic certification
- Eligible producers include farmers, ranchers, forest landowners, and other producers beginning or in the process of transitioning to organic certification.
- Relative to (823) Organic Management you were asked to review



USDA offers disaster assistance to farmers in Tennessee impacted by recent storms and tornadoes

- USDA has technical and financial assistance available to help farmers and livestock producers recover in the wake of these disasters
- Impacted producers should contact their local USDA service center to report losses and learn more about programs that may be available to assist in their recovery from crop, land, infrastructure and livestock losses and damages
- FSA's Emergency Conservation Program and Emergency Forest Restoration Program can assist landowners and forest stewards with financial and technical assistance to restore fencing, damaged farmland or forests. The Emergency Conservation Program can also cover costs associated with debris removal from cropland.
- NRCS is always available to provide technical assistance



What can you do as State Technical Committee?

- **Most Importantly**
 - **Provide input**
 - **Help spread the word**
 - **Help promote applications**



CSP Report

Bill Norfleet

CSP Program Manager

Nashville State Office | Programs

801 Broadway, Nashville, TN 37203

Phone: (615) 277-2595

Email: bill.norfleet@usda.gov | Website: www.tn.nrcs.usda.gov

Stay connected with USDA:

USDA is an equal opportunity provider, employer, and lender

Conservation Stewardship Program



Inflation Reduction Act

CSP IRA Climate Smart Agriculture Practices and Enhancements

| Climate Change Mitigation Practice Categories | Code | Conservation Practice Standard Name ⁽²⁾ (units) | CSP Enhancement Code | Conservation Stewardship Program (CSP) Bundle and Enhancement Activity | | |
|---|-------|---|----------------------|---|----------------|--|
| Soil Health | | | B000BFF1 | Buffer Bundle#1* | | |
| | | | B000CPL24 | Cropland soil health management system* | | |
| | | | B000CPL25 | Climate smart advanced soil health* | | |
| | 327 | Conservation Cover (acres) | E327A | Conservation cover for pollinators and beneficial insects | | |
| | | | E327B | Establish Monarch butterfly habitat | | |
| | | | E328A | Resource conserving crop rotation | | |
| | 328 | Conservation Crop Rotation (acres) | E328B | Improved resource conserving crop rotation | | |
| | | | E328E | Soil health crop rotation | | |
| | | | E328F | Modifications to improve soil health and increase soil organic matter | | |
| | | | E328G | Crop rotation on recently converted CRP grass/legume cover for soil organic matter improvement | | |
| | | | E328N | Intercropping to improve soil health | | |
| | | | E328O | Perennial grain crop conservation rotation | | |
| | | | E329A | No till to reduce soil erosion | | |
| | 329 | Residue and Tillage Management, No Till (acres) | E329B | No till to reduce tillage induced particulate matter | | |
| | | | E329C | No till to increase plant-available moisture | | |
| | | | E329D | No till system to increase soil health and soil organic matter content | | |
| | | | E329E | No till to reduce energy | | |
| | | | 332 | Contour Buffer Strips (acres) | None Available | |
| | 340 | Cover Crop (acres) | E340A | Cover crop to reduce soil erosion | | |
| | | | E340B | Intensive cover cropping to increase soil health and soil organic matter content | | |
| | | | E340C | Use of multi-species cover crops to improve soil health and increase soil organic matter | | |
| | | | E340D | Intensive orchard/vineyard floor cover cropping to increase soil health | | |
| | | | E340F | Cover crop to minimize soil compaction | | |
| | | | E340G | Cover crop to reduce water quality degradation by utilizing excess soil nutrients | | |
| | | | E340H | Cover crop to suppress excessive weed pressures and break pest cycles | | |
| | | | E340I | Using cover crops for biological strip till | | |
| | | | 345 | Residue and Tillage Management, Reduced Till (acres) | E345A | Reduced tillage to reduce soil erosion |
| | | | | | E345B | Reduced tillage to reduce tillage induced particulate matter |
| | E345C | Reduced tillage to increase plant-available moisture | | | | |
| | E345D | Reduced tillage to increase soil health and soil organic matter content | | | | |
| | E345E | Reduced tillage to reduce energy use | | | | |
| | 386 | Field Border (acres) | E386A | Enhanced field borders to reduce soil erosion along the edge(s) of a field | | |
| | | | E386B | Enhanced field borders to increase carbon storage along the edge(s) of the field | | |
| | | | E386C | Enhanced field borders to decrease particulate emissions along the edge(s) of the field | | |
| | | | E386D | Enhanced field borders to increase food for pollinators along the edge(s) of a field | | |
| | | | E386E | Enhanced field borders to increase wildlife food and habitat along the edge(s) of a field | | |
| | 393 | Filter Strips (acres) | E393A | Extend existing filter strip to reduce water quality impacts | | |
| | 412 | Grassed Waterways (acres) | E412A | Enhance a grassed waterway | | |
| | 484 | Mulching (acres) | E484A | Mulching to improve soil health | | |
| | | | E484B | Reduce particulate matter emissions by using orchard or vineyard generated woody materials as mulch | | |
| | | | E484C | Reduce particulate matter emissions by using orchard or vineyard generated woody materials as mulch | | |
| | 585 | Stripcropping (acres) | None Available | | | |
| | 601 | Vegetative Barriers (feet) | | | | |
| | 603 | Herbaceous Wind Barriers (feet) | | | | |

*not complete list



CSP CLASSIC & IRA CSP & RCPP CSP for FY23

- Important Deadlines

- March 31, 2023 - FY 23 Renewal application deadline
- **April 21, 2023 - FY 23 CSP Classic & RCPP CSP application deadline & IRA Deadline**
- **June 23, 2023 - CSP Classic Ranking deadline**
- **June 27, 2023 –CSP Classic Preapprovals**
- **July 21, 2023 – 30% Obligation**
- **August 4, 2023 – 60% Obligation**
- **August 25, 2023 – 80% Obligation**
- **September 8, 2023: FY23 CSP Classic Obligation deadline (NHQ Deadline)**

IRA CSP DEADLINES WILL FOLLOW CSP CLASSIC DEADLINES



TN CSP Funding FY23

Initial Allocations:

CSP Classic: \$11,800,000.00

CSP IRA: \$5,359,004.00

CSP MRBI: \$1,429,247.00

CSP Classic Organic: \$200,000.00

Total FY23 CSP ALLOCATION: \$18,788,251

504 applications for FY23 in protracts

FY23 Renewal Status



Final Obligations:

50 Contracts

\$1,465,709.00

7,305 Acres Contracted

NIPF Obligations:

9 Contracts

\$401,710.00

1,953.1 Acres Contracted

HU Participants:

9 Contracts

\$189,203.00

759.6 Acres Contracted



Agricultural Conservation Easement Program (ACEP) Update

Pamela Hoskins
Easement Program Manager

801 Broadway
Nashville, TN 37203
Phone: (615) 277-2593
pamela.hoskins@usda.gov
www.tn.nrcs.usda.gov

23



ACEP FY23 Program Applications

- The ACEP FY23 initial sign-up period had a cut off date of November 3, 2022. Second ACEP sign-up cut off date was February 10th, 2023.
- Expect cut off date for FY24 to be the first part of November 2023.

ACEP FY23 Program Applications – contd. *(as of May 8, 2023)*

- ▶ Tennessee is currently moving towards obligation on 10 WRE applications and 1 WREP application which will cover approximately 1,506 acres.
- ▶ Additionally, we have one application to convert an existing 30-yr WRP easement (174.4 acres) into a permanent WRE easement.

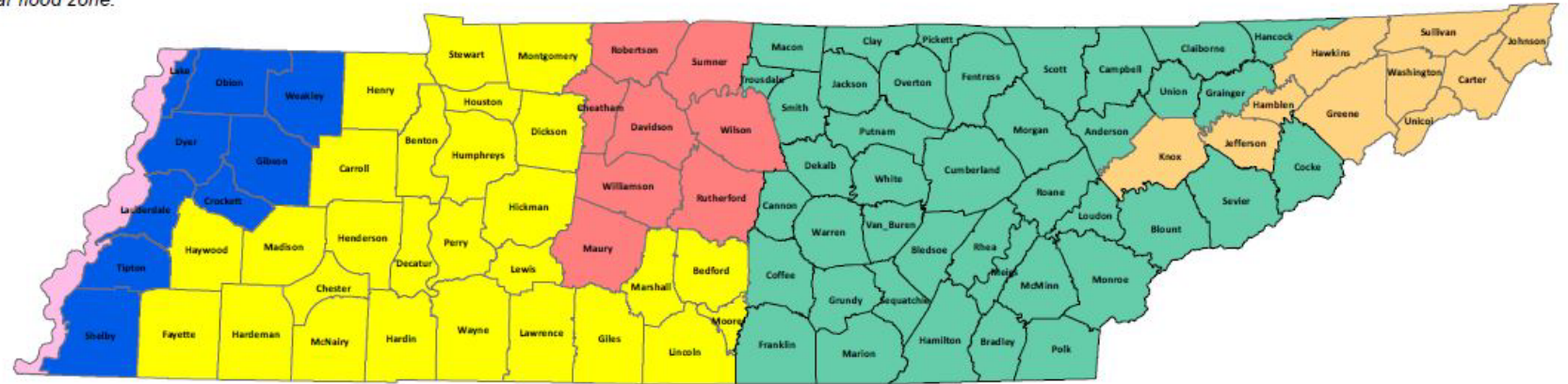


Mississippi River Batture Land

Portions of Lake and Dyer Counties behind Main River Levee. Lauderdale, Tipton & Shelby, areas of Mississippi River Flood Plain within 100 year flood zone.

Tennessee Regions FY23 ACEP-WRE AWMA Geographic Area Rate Cap (GARC)

Payment Rate Per Acre





*Easement acreages below and above AWMA limits require an independent appraisal.

| | Open Land | Other Land | Woodland |
|---------------------|---------------|------------|----------|
| Acreage Range | *20-750 acres | | |
| Mississippi Batture | \$3,500 | \$1,050 | \$2,400 |
| Acreage Range | *20-600 acres | | |
| Market Area 1 | \$4,000 | \$1,050 | \$2,400 |
| Acreage Range | *20-600 acres | | |
| Market Area 2 | \$3,600 | \$1,050 | \$2,400 |
| Acreage Range | *20-500 acres | | |
| Market Area 3 | \$4,650 | \$1,050 | \$2,400 |
| Acreage Range | *20-200 acres | | |
| Market Area 4 | \$3,900 | \$1,050 | \$2,400 |
| Acreage Range | *20-150 acres | | |
| Market Area 5 | \$4,900 | \$1,050 | \$2,400 |

USDA-NRCS
Nashville, TN
September 2022
Approved January 2023

GARC per acre rates are based on 95% of the Area Wide Market Analysis

- 
- 
- The GARC Map is used to create a basis for the purchase of conservation easements through the ACEP-WRE by placing a value per acre in different geographical areas of the state.
 - An Area Wide Market Analysis (AWMA) is conducted by a private certified appraiser. The appraiser gathers data from property sales over the last 12 months on properties that fit the categories listed on the map. Once the data is collected, the appraiser summarizes the data to calculate an average value for each geographical area. Tennessee has decided to provide compensation based on 95 percent of the average value, then round to the nearest \$50.00.

QUESTIONS



In accordance with Federal civil rights law and U.S. Department of Agriculture (USDA) civil rights regulations and policies, the USDA, its Agencies, offices, and employees, and institutions participating in or administering USDA programs are prohibited from discriminating based on race, color, national origin, religion, sex, gender identity (including gender expression), sexual orientation, disability, age, marital status, family/parental status, income derived from a public assistance program, political beliefs, or reprisal or retaliation for prior civil rights activity, in any program or activity conducted or funded by USDA (not all bases apply to all programs). Remedies and complaint filing deadlines vary by program or incident.

Persons with disabilities who require alternative means of communication for program information (e.g., Braille, large print, audiotape, American Sign Language, etc.) should contact the responsible Agency or USDA's TARGET Center at (202) 720-2600 (voice and TTY) or contact USDA through the Federal Relay Service at (800) 877-8339. Additionally, program information may be made available in languages other than English.

To file a program discrimination complaint, complete the USDA Program Discrimination Complaint Form, AD-3027, found online at [How to File a Program Discrimination Complaint](#) and at any USDA office or write a letter addressed to USDA and provide in the letter all of the information requested in the form. To request a copy of the complaint form, call (866) 632-9992. Submit your completed form or letter to USDA by: (1) mail: U.S. Department of Agriculture, Office of the Assistant Secretary for Civil Rights, 1400 Independence Avenue, SW, Washington, D.C. 20250-9410; (2) fax: (202) 690-7442; or (3) email: program.intake@usda.gov.

**Natural
Resources
Conservation
Service**

nrcs.usda.gov/

