

T Factor

The T factor is an estimate of the maximum average annual rate of soil erosion by wind and/or water that can occur without affecting crop productivity over a sustained period. The rate is in tons per acre per year.

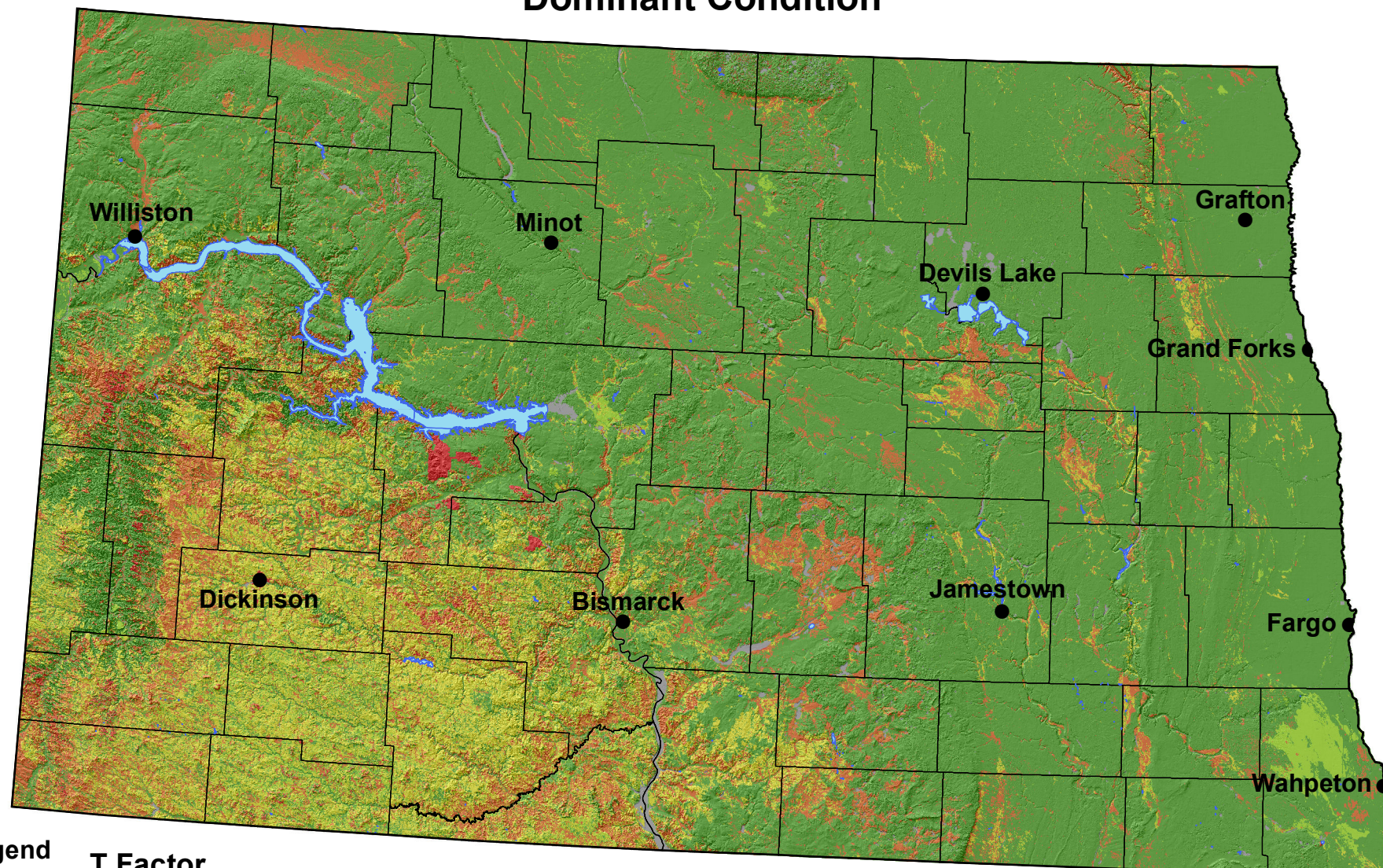
Soil Survey Staff, Natural Resources Conservation Service, United States Department of Agriculture. Web Soil Survey. Available online at <http://websoilsurvey.nrcs.usda.gov/> . Accessed 03/25/2016.





United States
Department of
Agriculture

T Factor Dominant Condition



Legend

- City
- County
- State
- Water

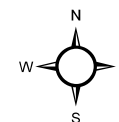
T Factor

- | | |
|---|-----------|
| 5 | 2 |
| 4 | 1 |
| 3 | Not rated |



0 20 40 80 Miles

1:2,500,000



USDA is an equal opportunity provider, employer, and lender.