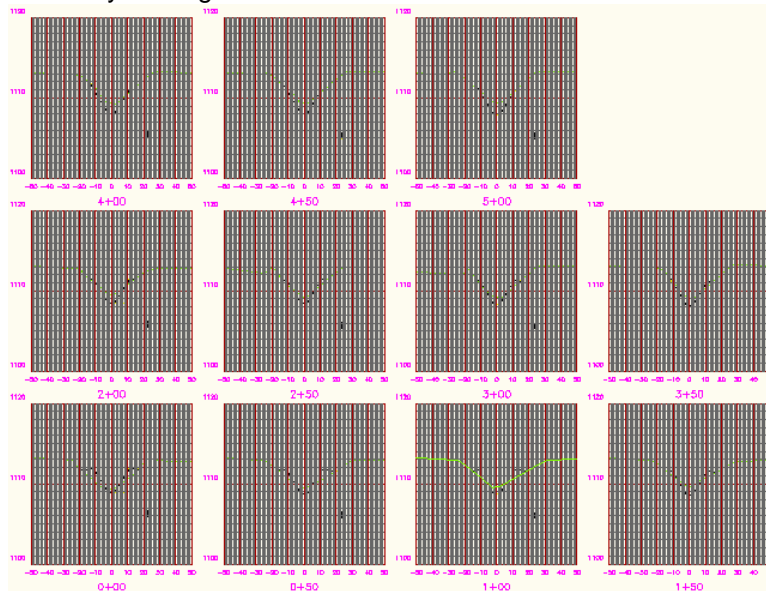


Group plot styles are used to organize groups of multiple sections. The group plot styles can be set up to place sections on a sheet that is formatted for plotting.

This guide covers the group plot styles that are provided with the North Dakota drawing template.

### Array of Sections

Sheet Style Assigned: None



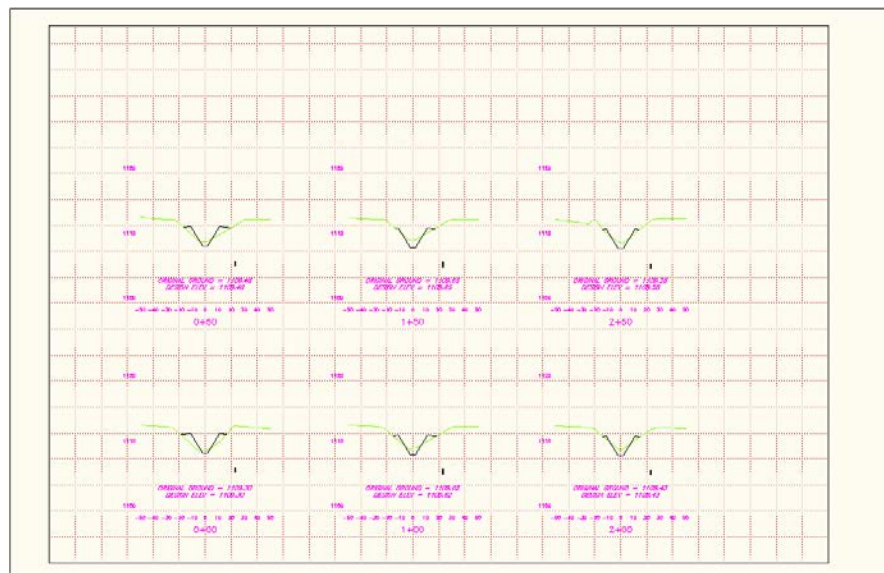
Each group plot style in the North Dakota drawing template has a corresponding sheet style automatically assigned to it, which controls the sheet size and the full sheet grid lines that are plotted. The section view style used in these samples have no grid lines displayed for the individual sections (designated by a No Grid in the style name), since grid lines are provided by the sheet style.

### 11x17 0.5 Grid With Dotted Lines

Horizontal Grid Increment : 0.5" on a plotted 11x17 sheet

Vertical Grid Increment: 0.5" on a plotted 11x17 sheet

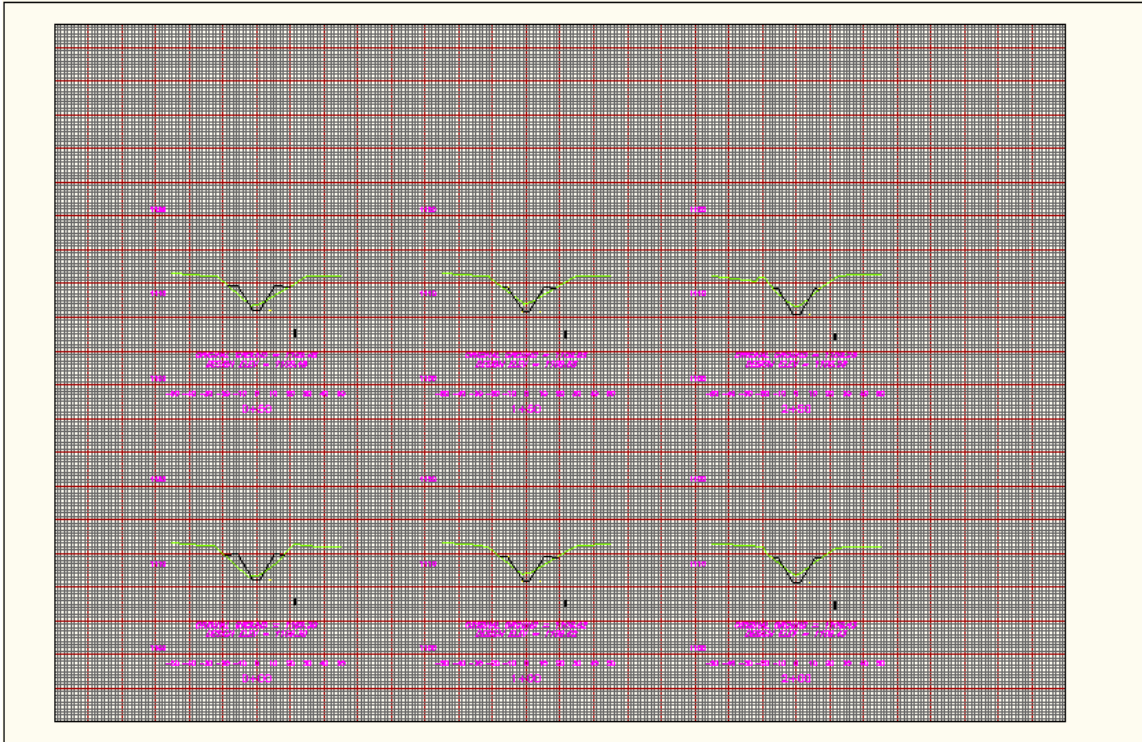
For the dotted lines to display properly with this plot style, the linetype scale of the drawing must be the same as the model space annotation scale. Change the linetype scale by typing LTSCALE at the command line and assigning a value.



**11x17 0.5 Major – 0.05 Minor**

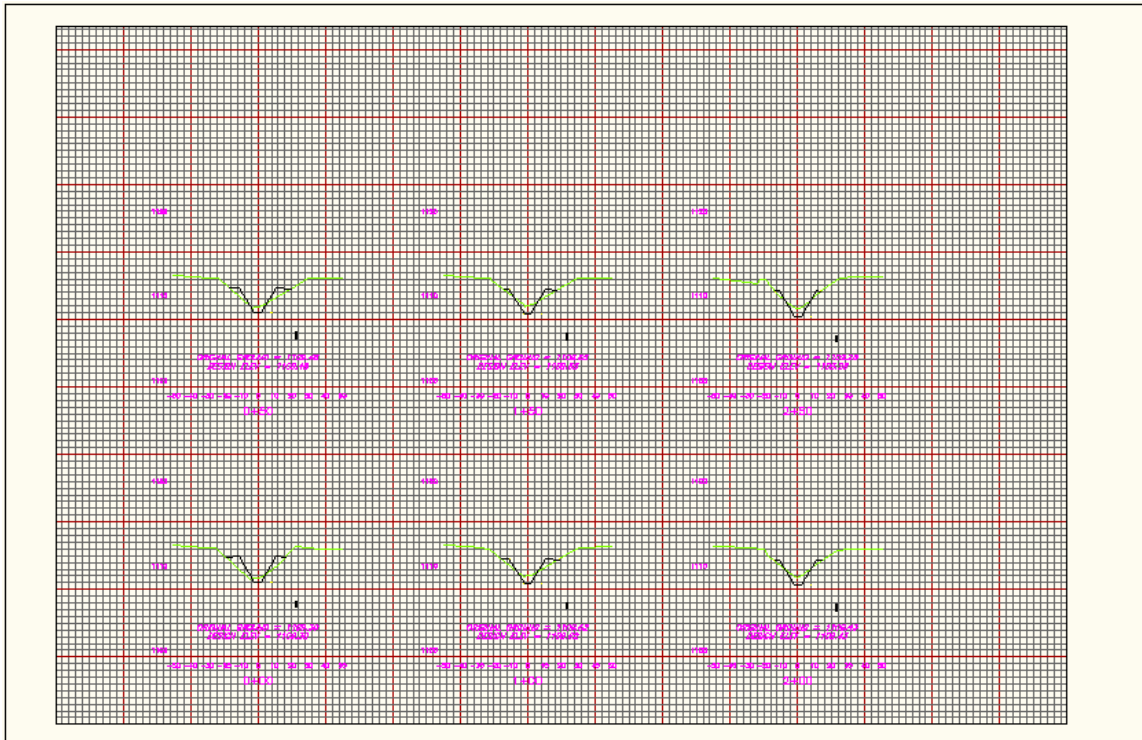
Horizontal Grid Increment : Major Grids at 0.5" and minor grids at 0.05", as plotted on an 11x17 sheet

Vertical Grid Increment: Major Grids at 0.5" and minor grids at 0.05", as plotted on an 11x17 sheet

**11x17 1.0 Major – 0.1 Minor**

Horizontal Grid Increment : Major Grids at 1.0" and minor grids at 0.1", as plotted on an 11x17 sheet

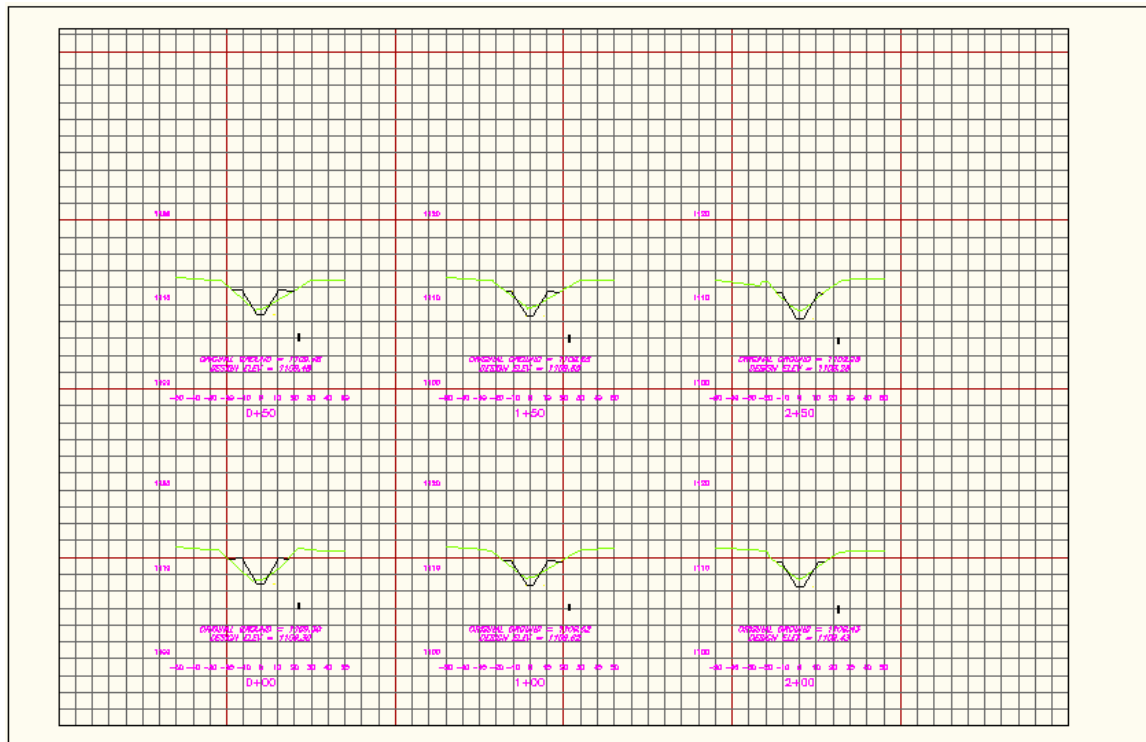
Vertical Grid Increment: Major Grids at 1.0" and minor grids at 0.1", as plotted on an 11x17 sheet



**11x17 2.5 Major – 0.25 Minor**

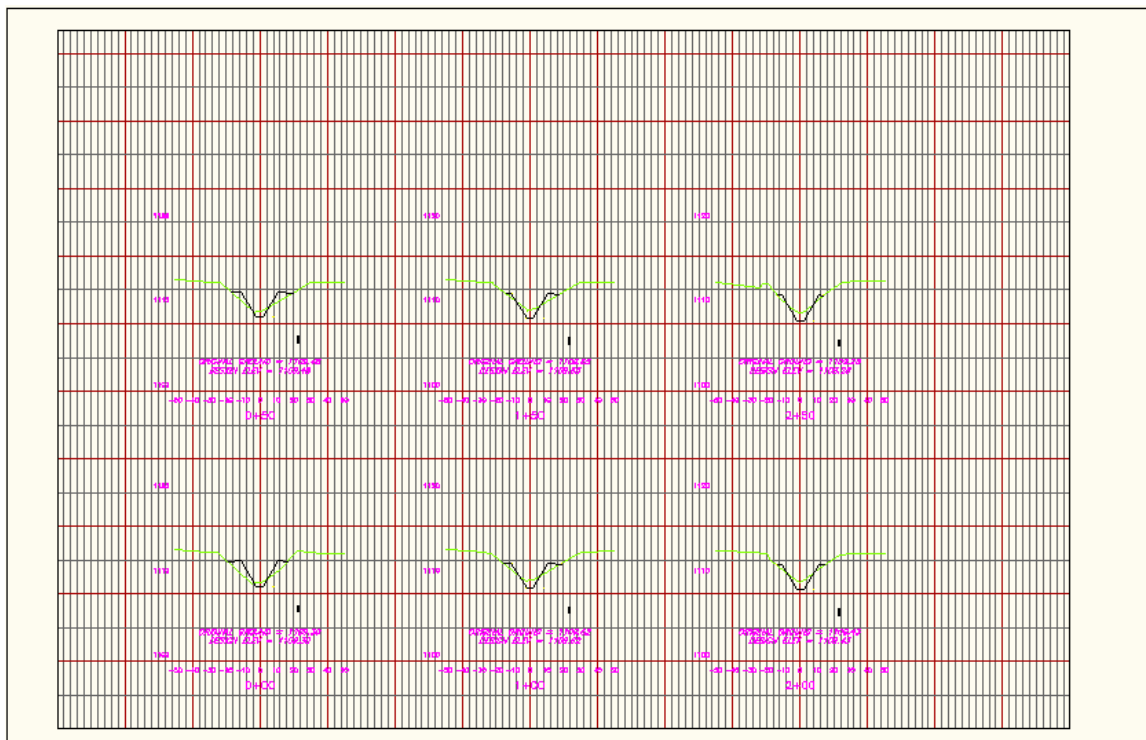
Horizontal Grid Increment : Major Grids at 2.5" and minor grids at 0.25", as plotted on an 11x17 sheet

Vertical Grid Increment: Major Grids at 2.5" and minor grids at 0.25", as plotted on an 11x17 sheet

**11x17 H(1 – 0.5) V(1 – 0.1)**

Horizontal Grid Increment : Major Grids at 1.0" and minor grids at 0.5", as plotted on an 11x17 sheet

Vertical Grid Increment: Major Grids at 1.0" and minor grids at 0.1", as plotted on an 11x17 sheet



**11x17 Sheet – No grid lines**

Horizontal Grid Increment : 0.5" on a plotted 11x17 sheet

Vertical Grid Increment: 0.5" on a plotted 11x17 sheet

Only the plot and sheet boundaries are displayed.

