



Warner Draw Watershed Plan-EA

Scoping Meetings

May 29 & 30, 2018



BOWEN COLLINS
& ASSOCIATES

&





Outline/Agenda



- Project Team
- Watershed Protection and Flood Prevention Program
- Project Overview
- NEPA Process
- Scoping Schedule
- Project Contact Information
- Questions/Comments/Concerns



BOWEN COLLINS
& ASSOCIATES

&





Project Team



Lead Federal Agency
Natural Resources Conservation Service



WASHINGTON COUNTY
WATER CONSERVANCY DISTRICT

Project Sponsors
Primary Sponsor: Washington County
Other Sponsors: City of St. George, City of Hurricane,
Washington County Water Conservancy District



Engineering, Concept Design, & Environmental
Bowen Collins & Associates



NEPA
McMillen Jacobs Associates



BOWEN COLLINS
& ASSOCIATES

&





Watershed Protection and Flood Prevention Program



- Watershed Protection and Flood Protection Act (PL 83-566) has three general purposes:
 - Preventing damage from erosion, floodwater, and sediment
 - Furthering the conservation, development, utilization, and disposal of water
 - Furthering the conservation and proper utilization of land



BOWEN COLLINS
& ASSOCIATES

&





Watershed Protection and Flood Prevention Program



➡ PL 83-566 Funding Provided by NRCS

➡ Up to 100% Engineering

➡ Up to 100% Construction (Pending Authorized Purpose)

-Flood Protection

-Watershed Protection

-Public Recreation

-Public Fish & Wildlife

-Agricultural Water Management

-Municipal & Industrial Water Supply

-Water Quality Management

-Watershed Structure Rehabilitation

➡ Sponsor is Responsible for Real Property Rights

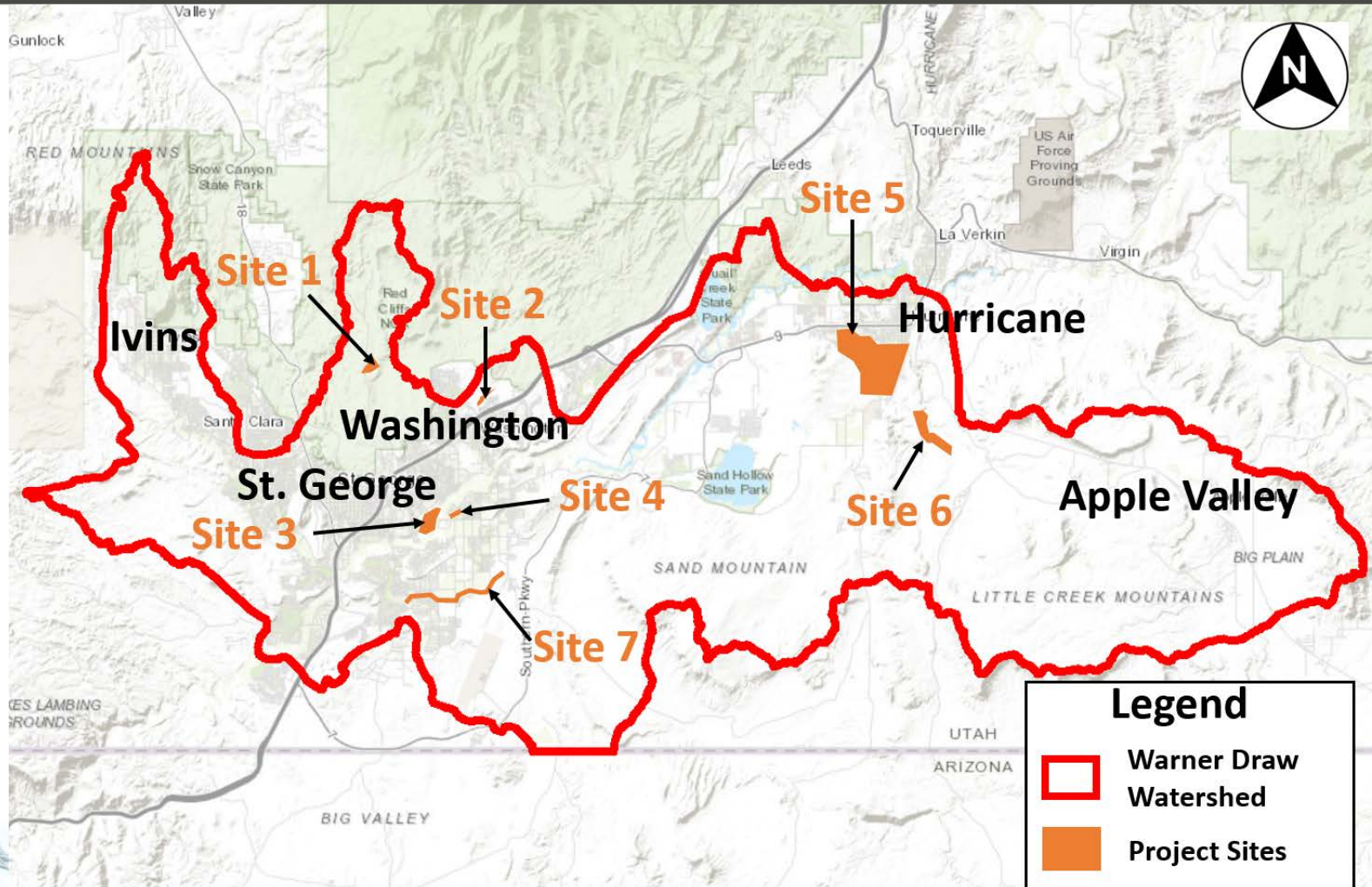


BOWEN COLLINS
& ASSOCIATES

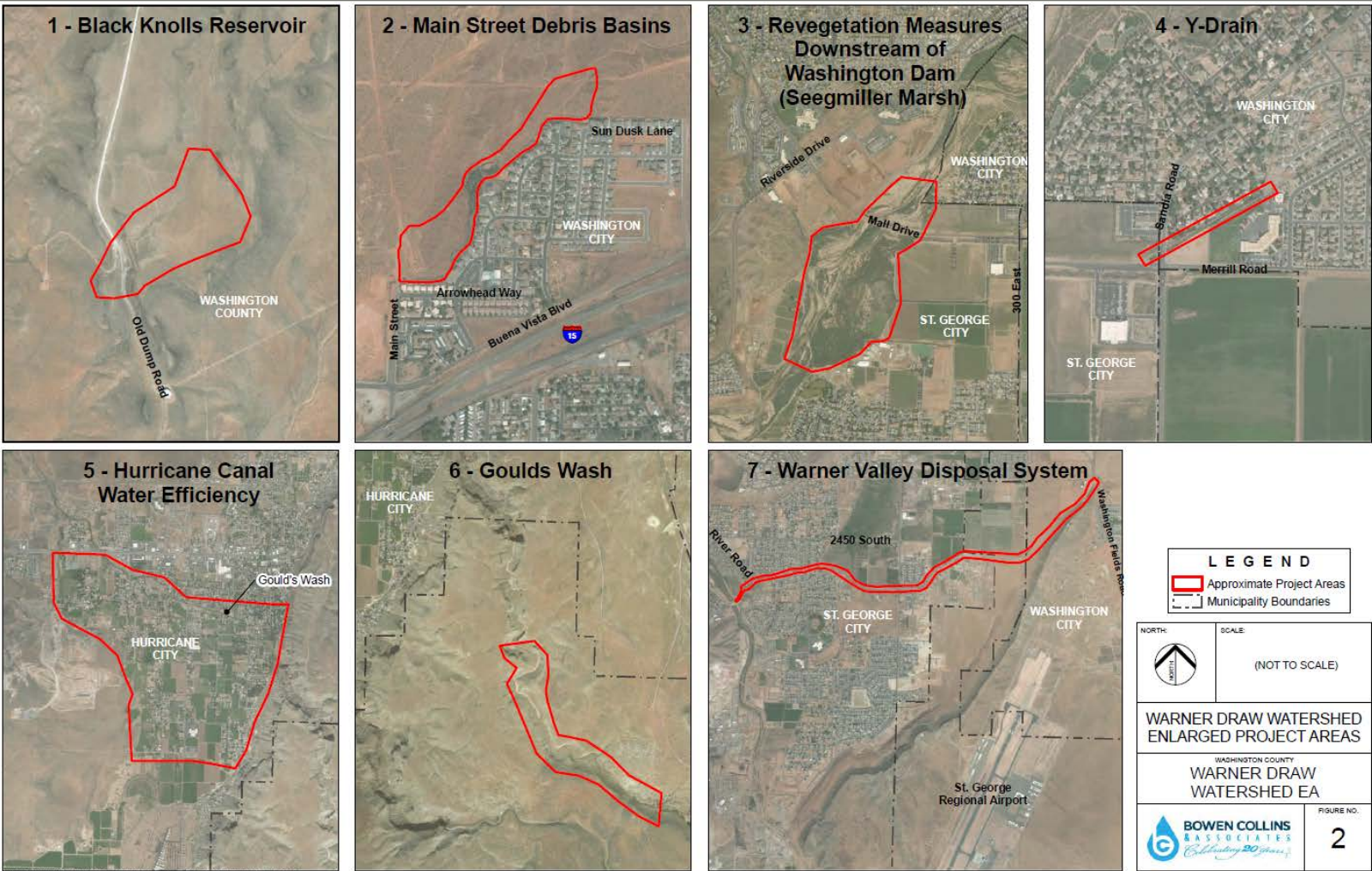
&



Project Overview



Project Overview





Project Overview

Site 1 – Black Knolls Reservoir



➤ Dam Evaluation

Old Dump Road

Black Knolls Dam

Drawing based on 2017 aerial
photograph from Google Earth Pro



BOWEN COLLINS
& ASSOCIATES

&



Project Overview

Site 2 – Main Street Debris Basins



- Construct debris basins to provide flood protection and sediment retention



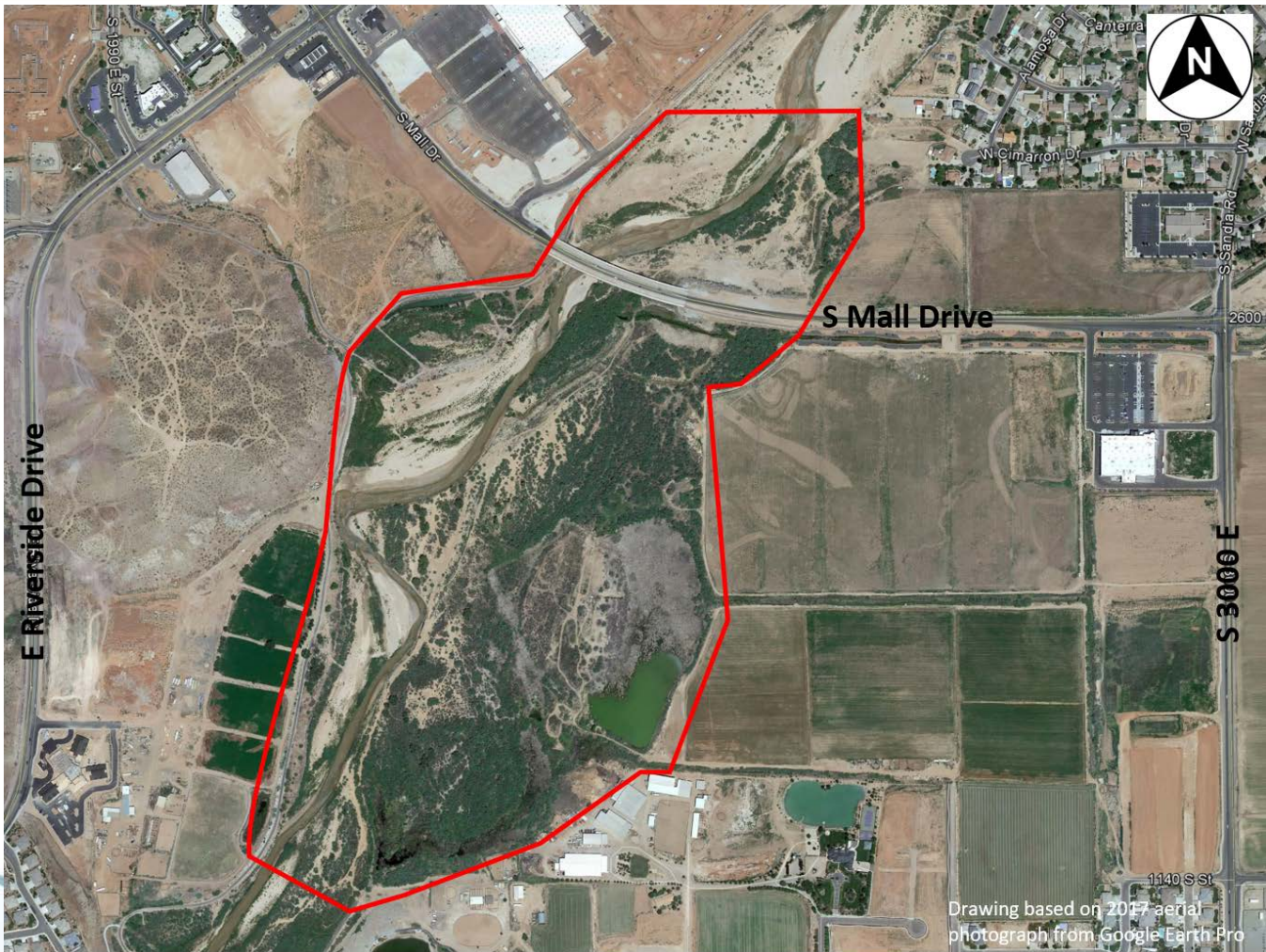


Project Overview

Site 3 - Washington Dam Revegetation Measures



- Revegetation along Virgin River near Washington Dam
- Habitat enhancement
- More wetlands
- Channel protection



BOWEN COLLINS
& ASSOCIATES

&



Project Overview

Site 4 - Y-Drain

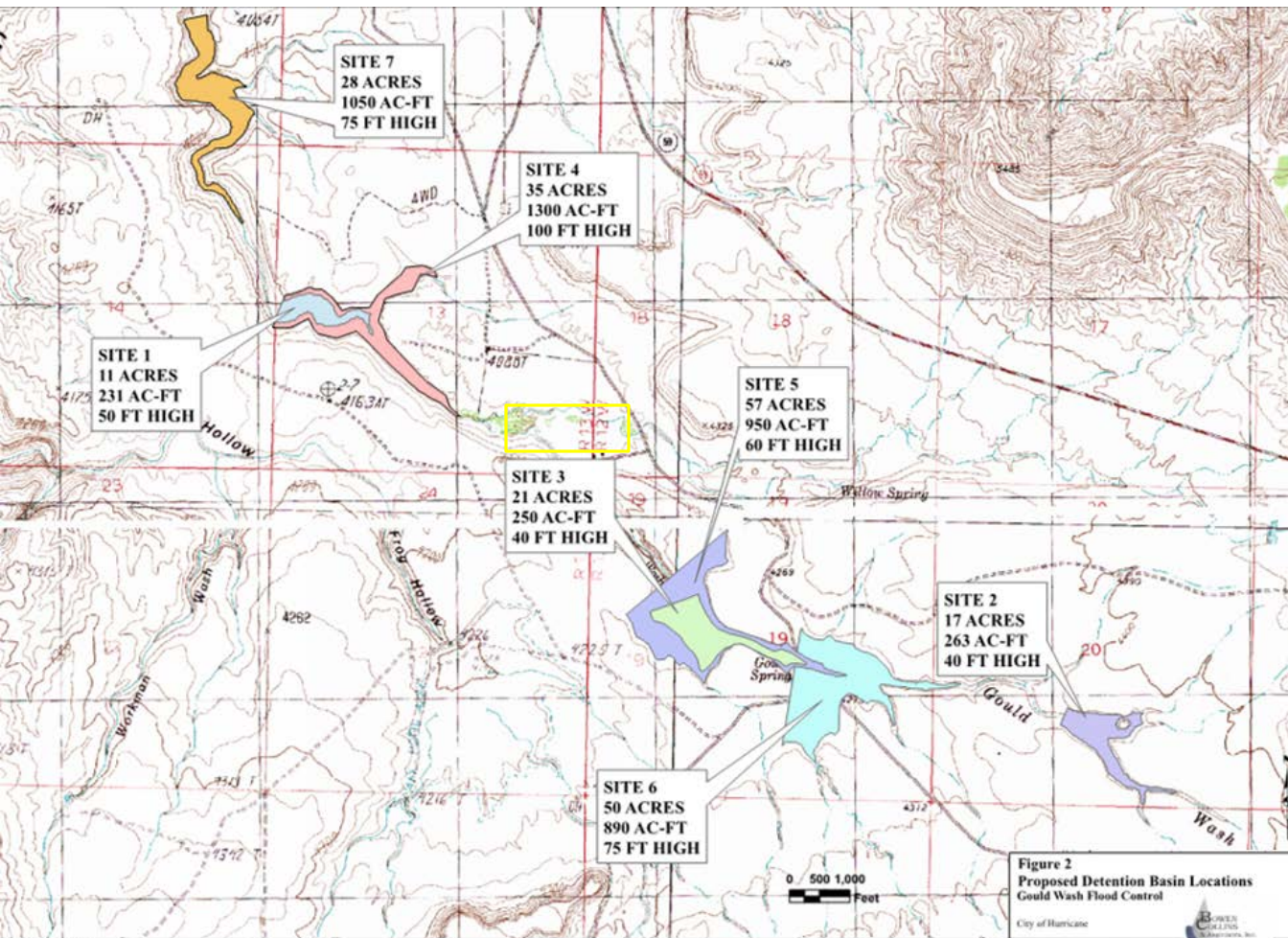


- Pipe open channel segment of Y-Drain
- Will provide additional water to Seegmiller Marsh



Project Overview

Site 6 – Gould's Wash



- Construct a new dam along Gould's Wash to provide flood protection and sediment retention

Printing Date: May 14, 2008
 File: P:\hurricane\Gould_Wash_MultiBasin\GIS\Project\Gould Wash Detention Basin Locations.mxd



Project Overview

Site 7 - Warner Valley Disposal System



- Conveyance improvements to disposal system



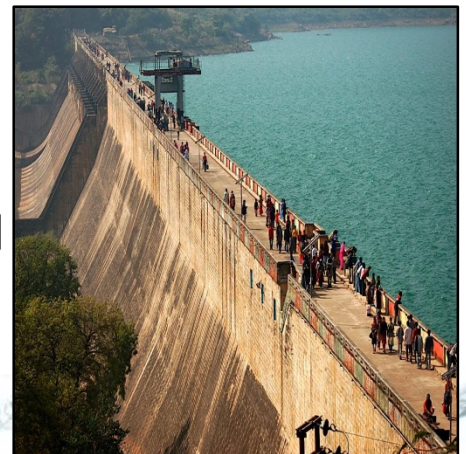
BOWEN COLLINS
& ASSOCIATES

&



NEPA Process (Plan-EA)

- Federal Funding Requires Analysis of the Project under NRCS National Environmental Policy Act (NEPA) Regulations.
 - NEPA of 1969 (Public Law 91-190) and the Council on Environmental Qualities regulations at 40 CFR Parts 1500-1508.
- NEPA Requirements
 - Environmental Assessment (EA) – Looks at potential impacts to the natural and man-made environment





NEPA Process

Resource Concerns Considered (Plan-EA)



SWAPAH

Soils

Upland Erosion and Sedimentation
Prime and Unique Farmland

Water

Surface Water Quality
Ground Water Quantity
Clean Water Act - Waters of the U.S.
Regional Water Mgt. Plans and Coastal
Zone Management Areas
Floodplain Management
Wetlands
Wild and Scenic Rivers
Sole Source Aquifers

Air

Air Quality
Clean Air Act

Plants

Special Status Plant Species
Forest Resources
Noxious Weeds and Invasive Plant
Species
Natural Areas
Riparian Areas

Animals

Essential Fish Habitat
Wildlife and Wildlife Habitat
Coral Reefs
Special Status Animal Species
Invasive Species
Migratory Birds/Bald and Golden Eagles

Human Environment

Socioeconomics
Historic Properties/Cultural Resources
Hazardous Materials
Environmental Justice and Civil Rights
Public Health and Safety
Recreation
Land Use
Visual Resources
Scenic Beauty
Parklands
Transportation Infrastructure
Noise
Ecological Critical Areas
National Parks, Monuments and Historical Sites
Scientific Resources



BOWEN COLLINS
& ASSOCIATES





NEPA Process (Plan-EA)



➤ Public Scoping & Comment Period

Identify resource concerns, get agency/public/ sponsor/stakeholder input, discuss problems & potential alternatives

➤ Concept Design & Engineering Analysis

Perform field reconnaissance, geotechnical studies, surveys, and prepare concept design

➤ Draft Plan-EA & Comment Period

Public review and comment period of Plan-EA that includes alternatives and environmental impacts

➤ Final Plan-EA

Final EA document that Incorporates Draft EA comments made available to the public on NRCS website

➤ Significance Determination

Finding of No Significant Impact (FONSI) Or Preparation of Environmental Impact Statement (EIS)



BOWEN COLLINS
& ASSOCIATES

&



McMILLEN
JACOBS
ASSOCIATES



Scoping Schedule



- Scoping Comment Period Open: May 15, 2018
- Public Scoping Meetings: May 29 & 30, 2018
- **Scoping Comment Period Close: June 14, 2018**

Submit comments via phone, email, letter, or comment card

Begin Conceptual Design & Engineering Analysis after completion of Scoping



BOWEN COLLINS
& ASSOCIATES

&





Contact Information



Please contact Jamie Tsandes (Bowen Collins & Associates) or Norm Evenstad (NRCS) with project questions and comments at:



Jamie Tsandes: (801) 495-2224

Norm Evenstad (801)-524-4569



warnerwatershed@bowencollins.com



Bowen Collins & Associates - Jamie Tsandes

154 East 14075 South

Draper, UT 84020



BOWEN COLLINS
& ASSOCIATES

&



Questions / Comments / Concerns


???



LEGEND

- Approximate Project Areas
- Municipality Boundaries

NORTH



SCALE

(NOT TO SCALE)

WARNER DRAW WATERSHED ENLARGED PROJECT AREAS

WASHINGTON COUNTY

WARNER DRAW WATERSHED EA




FIGURE NO.

2