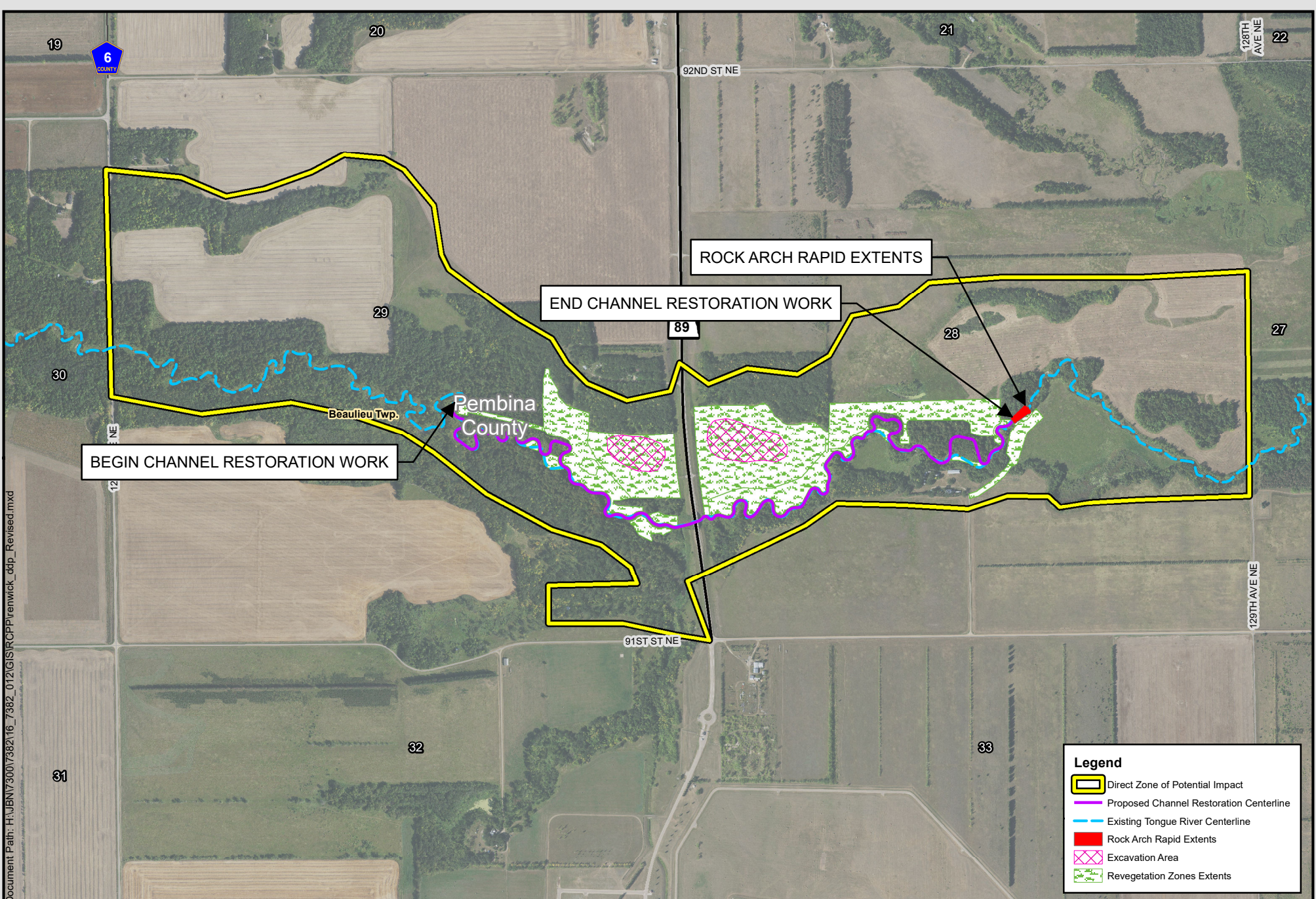


APPENDIX B

Project Maps

- B-1** Project Measures
- B-2** Areas of Interest - Benefited Area



Document Path: H:\JBN\7300\7382\16_7382_012\GIS\RCP\Penwick_ddp_Revised.mxd

Legend

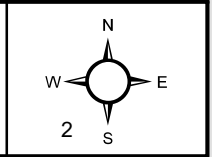
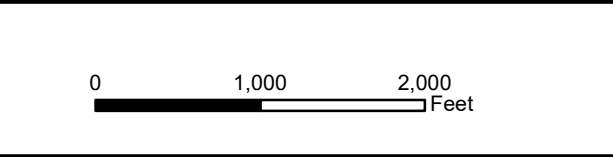
- Direct Zone of Potential Impact
- Proposed Channel Restoration Centerline
- Existing Tongue River Centerline
- Rock Arch Rapid Extents
- Excavation Area
- Revegetation Zones Extents

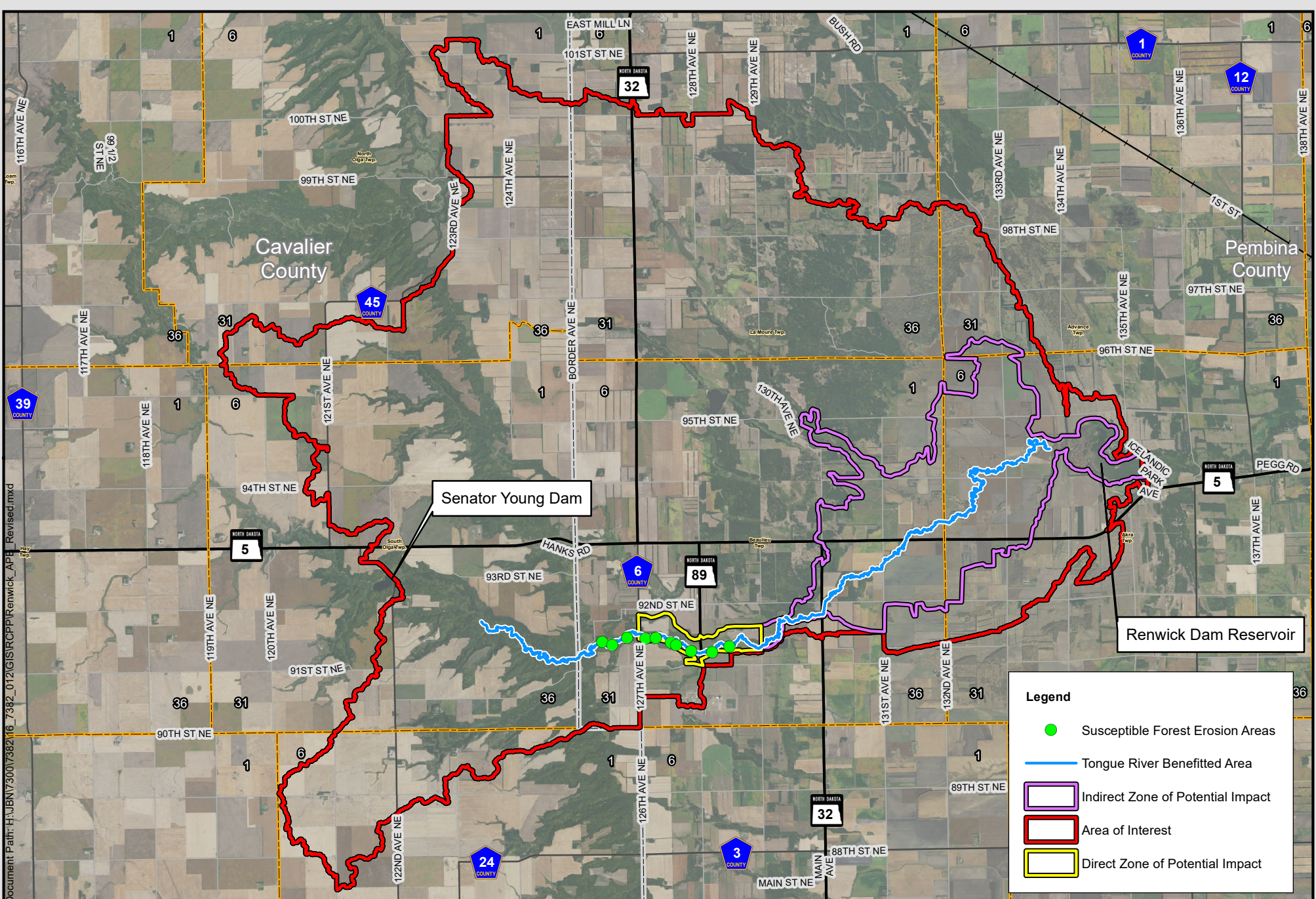
Scale: AS SHOWN Drawn by: ZCF Checked by: PDL Project No.: 7382-0012 Date: 4/28/2022 Sheet: 1 of 1

HOUSTON
engineering, inc.

B-1-Project Measures

Tongue River Sub-Watershed Plan
Watershed Plan and Environmental Assessment
Pembina Water Resource District





Document Path: H:\JBN\7300\7382\16_7382_012\GIS\RCPPI\Renwick_APB_ Revised.mxd

Legend

- Susceptible Forest Erosion Areas
- Tongue River Benefitted Area
- Indirect Zone of Potential Impact
- Area of Interest
- Direct Zone of Potential Impact

Scale: AS SHOWN
 Drawn by: ZCF
 Checked by: PDL
 Project No.: 7382-0012
 Date: 4/28/2022
 Sheet: 1 of 1

HOUSTON
 engineering, inc.

B-2-Areas of Interest / Benefitted Area

Tongue River Sub-Watershed Plan
 Watershed Plan and Environmental Assessment
 Pembina Water Resource District

