



---

**State Technical Committee**  
**AGENDA**  
Wednesday October 19, 2022

*This meeting will be conducted via Microsoft Teams internet conferencing. The meeting link and a call-in telephone number is provided at the end of this document.*

- 1:00 pm** Welcome – Denise Coleman, NRCS State Conservationist
- 1:05 pm** Presentation: Pennsylvania’s Clean Water State Revolving Fund  
Robert H. Boos, Deputy Executive Director for Project Management, Pennsylvania Infrastructure Investment Authority
- 1:35 pm** Presentation: Pennsylvania’s Agricultural Conservation Assistance Program (ACAP) – Karl G. Brown, Executive Secretary of the State Conservation Commission
- 2:05 pm** **Technical Reports**
- Engineering – Tim Peters, State Engineer
  - Ecological Sciences – Dan Ludwig, State Resource Conservationist
  - Soils – Yuri Plowden, State Soil Scientist
- 2:30 pm** **Easements Programs Report**
- Agricultural Conservation Easement Programs (ACEP) – Adam Dellinger, Regional Conservation Partnership Program Coordinator

## 2:45 pm Financial Program Reports

- Update – Jared Shippey, Assistant State Conservationist for Programs
- Environmental Quality Incentives Program (EQIP) – Ryan Cornelius, EQIP Program Manager
- National Water Quality Initiative (NWQI), Conservation Stewardship Program (CSP), and Conservation Innovation Grants (CIG) – Ashley Lenig, Conservation Program Manager
- Conservation Reserve Enhancement Program (CREP) – Jim Gillis, NRCS State Biologist
- Regional Conservation Partnership Program (RCP) – Adam Dellinger, Regional Conservation Partnership Program Coordinator

## 4:00 pm Committee Input

Do the State Technical Committee members have any suggestions for topics or agenda items for future meetings?

### **Dates for future State Technical Committee Meetings:**

Thursday, January 19, 2023

Tuesday, April 20, 2023

Wednesday, July 19, 2023

Thursday, October 19, 2023

## Microsoft Teams meeting

**Join on your computer, mobile app or room device**

[Click here to join the meeting](#)

Meeting ID: 294 491 590 167

Passcode: bboNhF

Or Call In (Audio Only):

+1 202-650-0123,,294491590167#

United States, Washington DC Phone

Conference ID: 294 491 590 167#

[Download Teams](#) | [Join on the web](#)

[Learn More](#) | [Meeting options](#)

**Please note:** You can also attend this State Technical Committee Meeting in Person. It will be held in the NRCS Conference Room in our office (Suite 2) located at 359 East Park Drive in Harrisburg, PA. 17111. The map and directions to our office location are provided below:



# Directions to the NRCS Pennsylvania State Office



**USDA-NRCS**  
**359 East Park Drive, Suite 2**  
**Harrisburg, PA 17111**

NRCS is located on the east corner of the building

**Telephone: 717-237-2100**

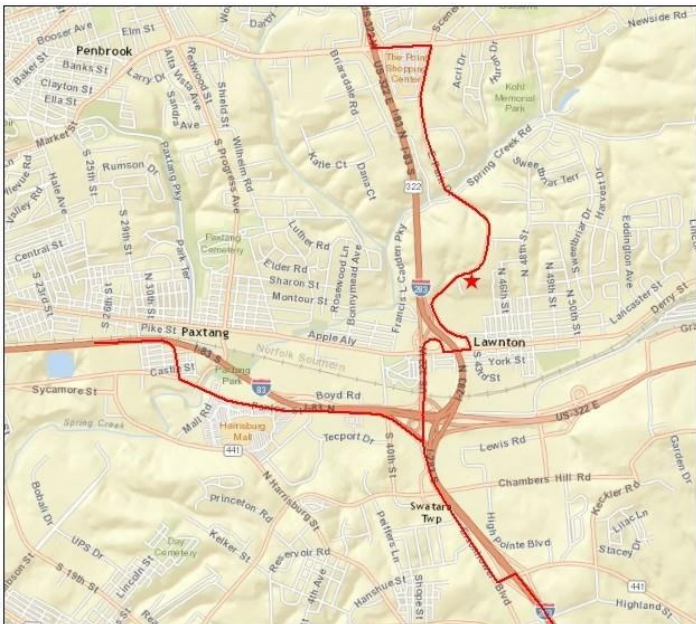
**Fax: 717- 237-2238**

Building hours are: 8:00 AM to 4:30 PM

*If arriving outside of building hours please arrange for someone to meet you at the west building entrance to allow access to the building.*

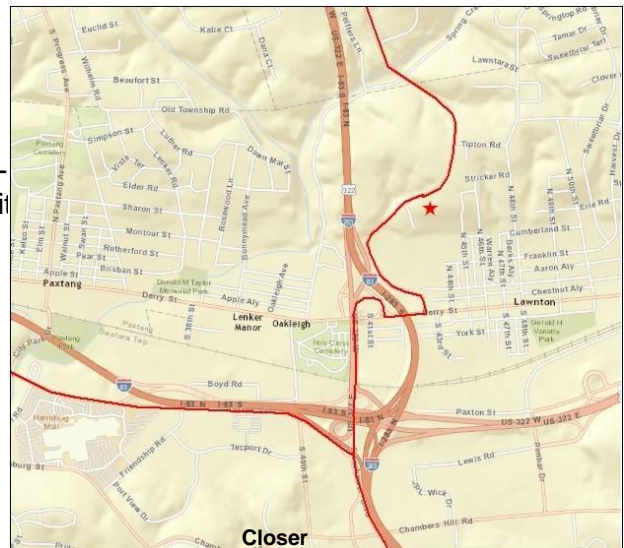
## Driving Directions

**From Washington, DC:** Take MD-295 N. - toward BALTI- MORE; Merge onto MD-295 N via the exit; Merge onto I-95 N toward; BALTIMORE/COLLEGE PARK; Merge onto I-695 N/BALTIMORE BELTWAY INNER LOOP via exit number 49B- on the left- toward I-70/I83/TOWSON; Merge onto I-83 N via exit number 24 toward TIMONIUM/YORK PA.; Continue on I83 N to exit number 45 toward Paxton Street; merge onto S 32nd Street; turn left onto Capital Area Greenbelt/Parkview Lane; turn left onto Capital Area Green- belt/City Park Drive and continue to follow Capital Area Greenbelt; take the 1<sup>st</sup> right onto Derry Street; turn left onto East Park Drive and travel approximately 0.6 mile. **Destina- tion will be on the right.**



**From Philadelphia:** Take exit 247 to merge onto I-283 N toward PA-283/Harrisburg/Hershey; take exit 2 for PA-441 N; turn left onto PA-441 N/Lindle Road; turn right onto Eisenhower Boulevard; continue onto US-322 W; keep right at the fork, follow signs for Derry Street; keep left at the fork, follow signs for Lawnton; turn left onto Derry Street; Take the 1<sup>st</sup> left onto East Park Drive and travel approximately 0.6 mile. **Destination will be on the right.**

**From Pittsburgh:** I-76 E/Pennsylvania Turnpike



East; Take exit 236 toward U.S. 15 N/Harrisburg; continue on the ramp and merge onto US-15 N; Take the exit onto PA-581 E toward I-83/ Harrisburg/Hershey; Merge onto I-83 N; take exit 45 toward Pax- ton Street; Merge onto S 32<sup>nd</sup> Street; turn left onto Capital Area

Greenbelt/Parkview Lane; turn left onto Capital Area Greenbelt/City Park Drive and continue to follow Capital Area Green- belt; take the 1<sup>st</sup> right onto Derry Street; turn left onto East Park Drive and travel approximately 0.6 mile. **Destination will be on the right.**

**From State College:** Merge onto US-322E via the ramp to Lewistown; Merge onto US-22/US-322; Take the exit onto I- 81N/US-322E toward Hershey; Continue on US-322 E, follow signs for I- 83S/Hershey York; Continue onto I-83S/US-322E; Take Exit 48 for Union Deposit Road; Turn left onto Union Deposit Road; Turn right onto East Park Drive and travel approx- imately 0.6 mile. **Destination will be on the right.**

*Helping People Help the Land*

An Equal Opportunity Provider and Employer



*Helping People Help the Land*

*USDA is an equal opportunity provider, employer, and lender.*