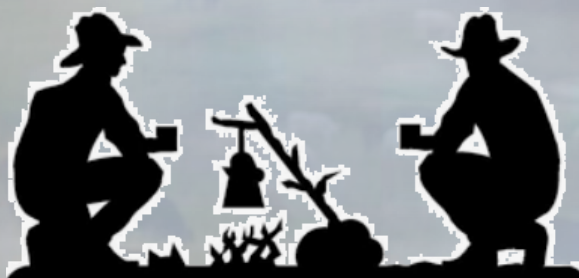


# Coastal Prairie Grazing Land Coalition's Coffee on the Prairie



## Hosted by Powderhorn Wildlife Management Area Managing Running Live Oak with Spike and Fire!

Learn more about the ecology of brush on the Coastal Prairie. We will visit a heavily wooded site that was cleared using herbicide applications and followed up with prescribed fire to restore Coastal Tallgrass Prairie. This is a great opportunity to sip some coffee and discuss other ideas to enhance each other's operations!

### Agenda

- 9:00 Coffee, Introductions, & WMA Overview
- 9:30 Stop #1- Open Prairie Managed with Spike and Fire
- 10:00 Stop #2- Closed Canopy Oak and the Way Forward
- 10:30 Grazing and Wildlife Management Considerations
- 11:00 Adjourn

### When:

**Feb 17, 2023 @ 9:00am**

### Location:

**Powderhorn WMA**

**FM 1289**

**Port O'Connor, TX**

This is an open discussion in a field setting on a working ranch, so dress in field attire. Long pants and closed toed shoes are a must.

**Questions Call**

**361-235-0440**



**Victoria & Calhoun SWCD** Natural Resources Conservation Service



United States  
Department of  
Agriculture

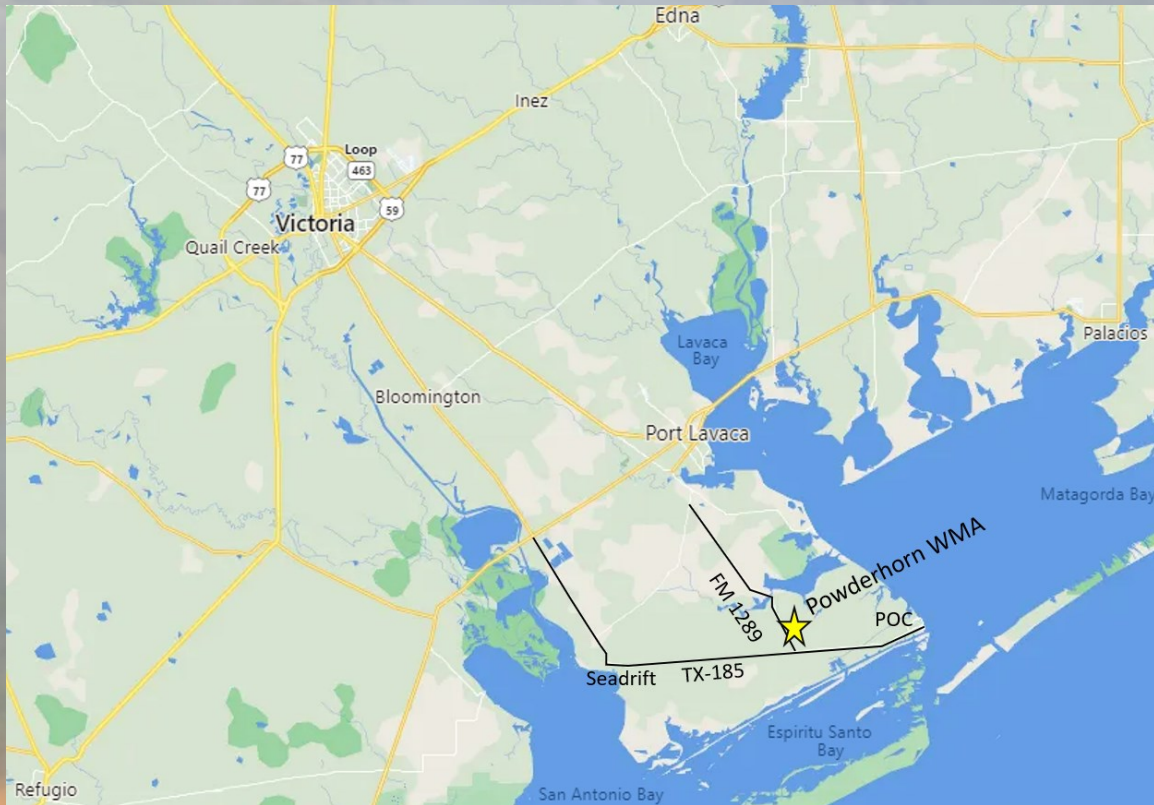
*USDA is an equal opportunity provider, employer, and lender.*

Persons with disabilities who require special accommodations or alternative means for communication of program information (Braille, Large print, audiotape, etc.) associated with this meeting should contact [matthew.machacek@usda.gov](mailto:matthew.machacek@usda.gov) at least two weeks prior to the meeting with his/her specific request.

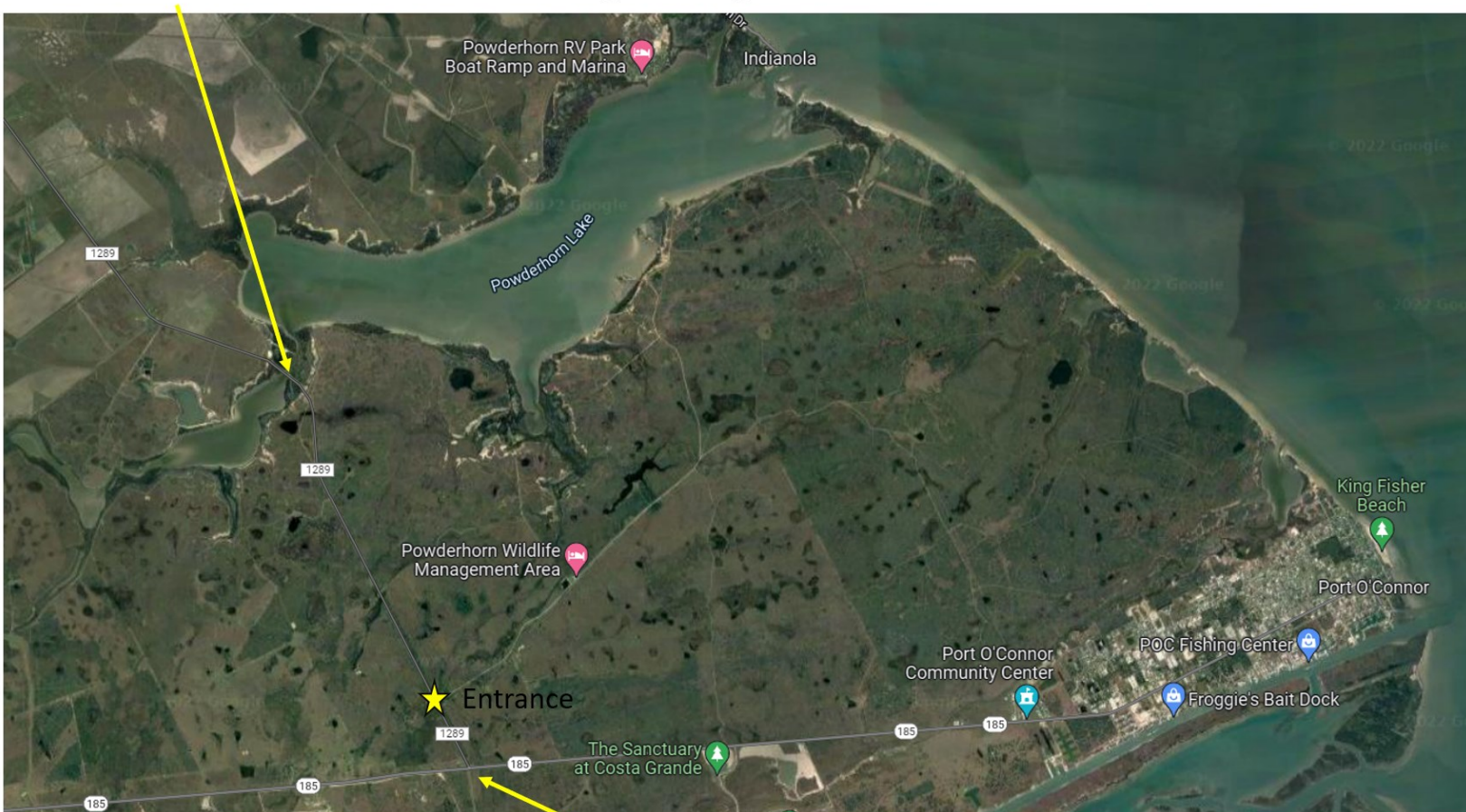


# Directions:

## Powderhorn WMA 7 miles West of Port O'Connor



Entrance is 3 miles South of the Bridge Crossing Powderhorn Lake on FM 1289



Entrance is 0.6 miles North of the TX-185 & FM 1289 intersection.