



APPENDIX B

Project Location Maps

B-1	Project Location Map
B-2	Areas of Potential Effect Map
B-3	Direct Area of Potential Effect Map

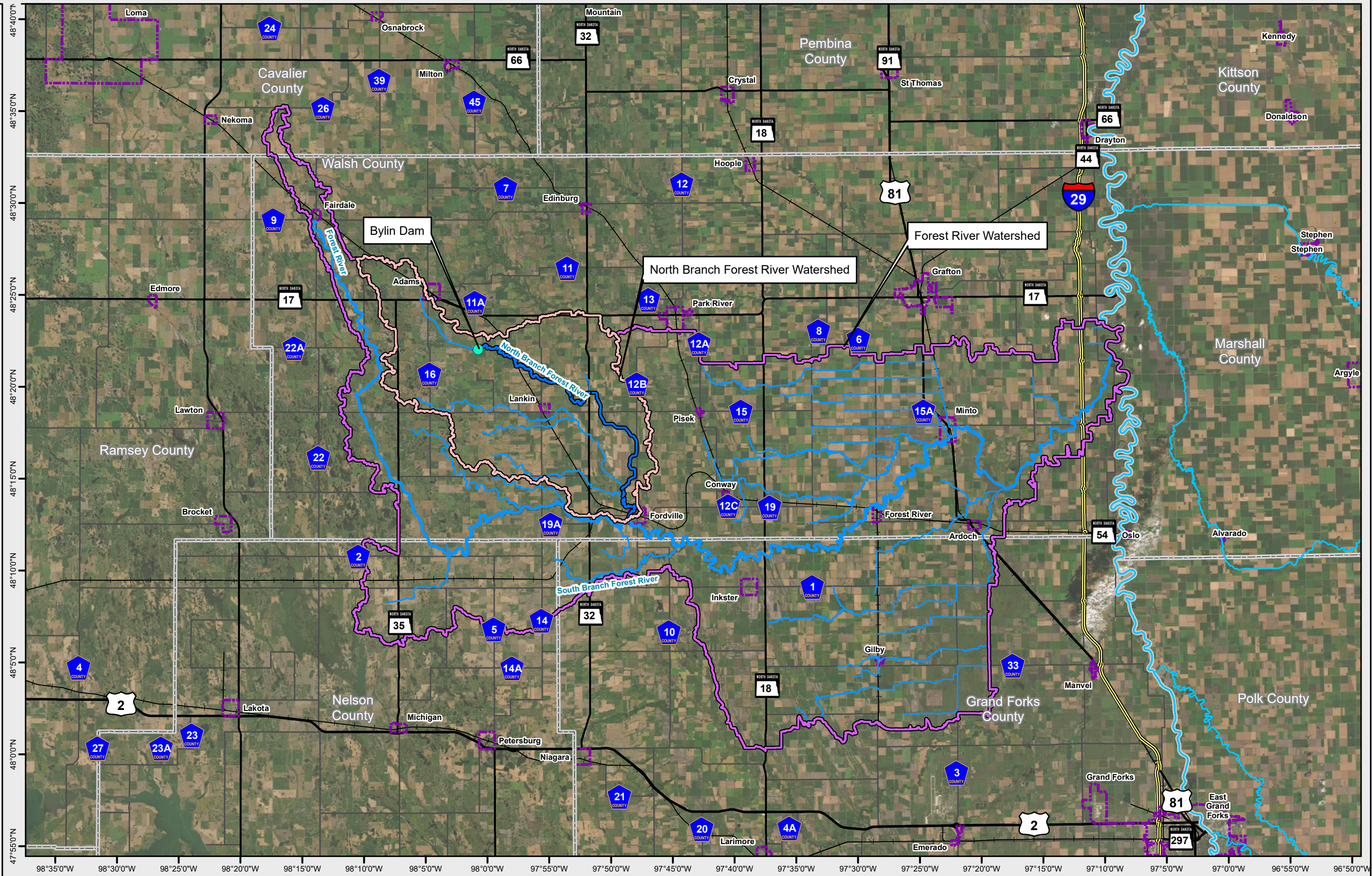
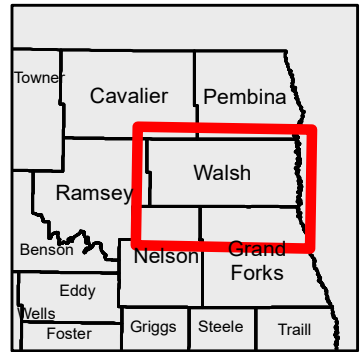
MAPPING NOTES

Digital orthophotography shown on this figure is from the North Dakota 2019 30cm (0.98ft) 4-band image collection. Originally collected in Summer, 2019, through the National Agricultural Imagery Program (NAIP) with higher resolution than NAIP program specifications funded by the North Dakota Dept of Water Resources. Accessed through WMS.

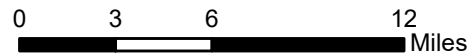
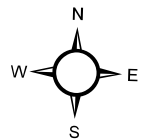
The coordinate system used in the preparation of this map is North Dakota Walsh County State Plane 1983 Ground Coordinates, Lambert Conformal Conic Projection. Horizontal Datum is NAD 83, GRS80 Spheroid. Elevations on this map are referenced to the North American Vertical Datum of 1988.

Streets, Townships, Counties, and other locational data are sourced from the North Dakota Information Technology Geographic Information Systems HUB Data portal, or locally surveyed where appropriate.

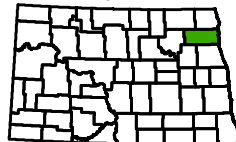
Map page size is Tabloid (11" x 17"). Accuracy of the map scales for varying paper sizes and is valid only if printed at this page size.



- North Branch Forest River Watershed (150.5 Sq. Mi.)
- Forest River Watershed (964.9 Sq. Mi.)
- Bylin Dam



Walsh County, North Dakota



Appendix B Project Maps: Figure B-1
Project Location Map

Scale:	Drawn by:	Checked by:	Project No.:	Date:	Sheet:
AS SHOWN	NRI	PDL	7135-0037	2/22/2022	1 of 3



1401 21st Avenue North
Fargo, ND 58102
701.237.5065

DEFINITIONS

Upstream Assessment Area (U-AA): the zone near the reservoir where there may be a direct impact. The U-AA includes the dam site, the flood pool upstream from the dam, and a short stretch of river immediately downstream from the dam, for a total of approximately 950 acres.

Downstream Assessment Area (D-AA): the zone downstream where the environment may be affected if there would be changes in the flow of the North Branch Forest River. The D-AA includes 23 miles of the North Branch Forest River and the adjacent floodplain to the confluence of the North Branch Forest River with the Middle Branch Forest River, just west of Fordville, North Dakota

Upstream Area: the area that is not expected to be affected by the project but describes the context of the environmental conditions where appropriate (e.g., soils and erodibility potential).

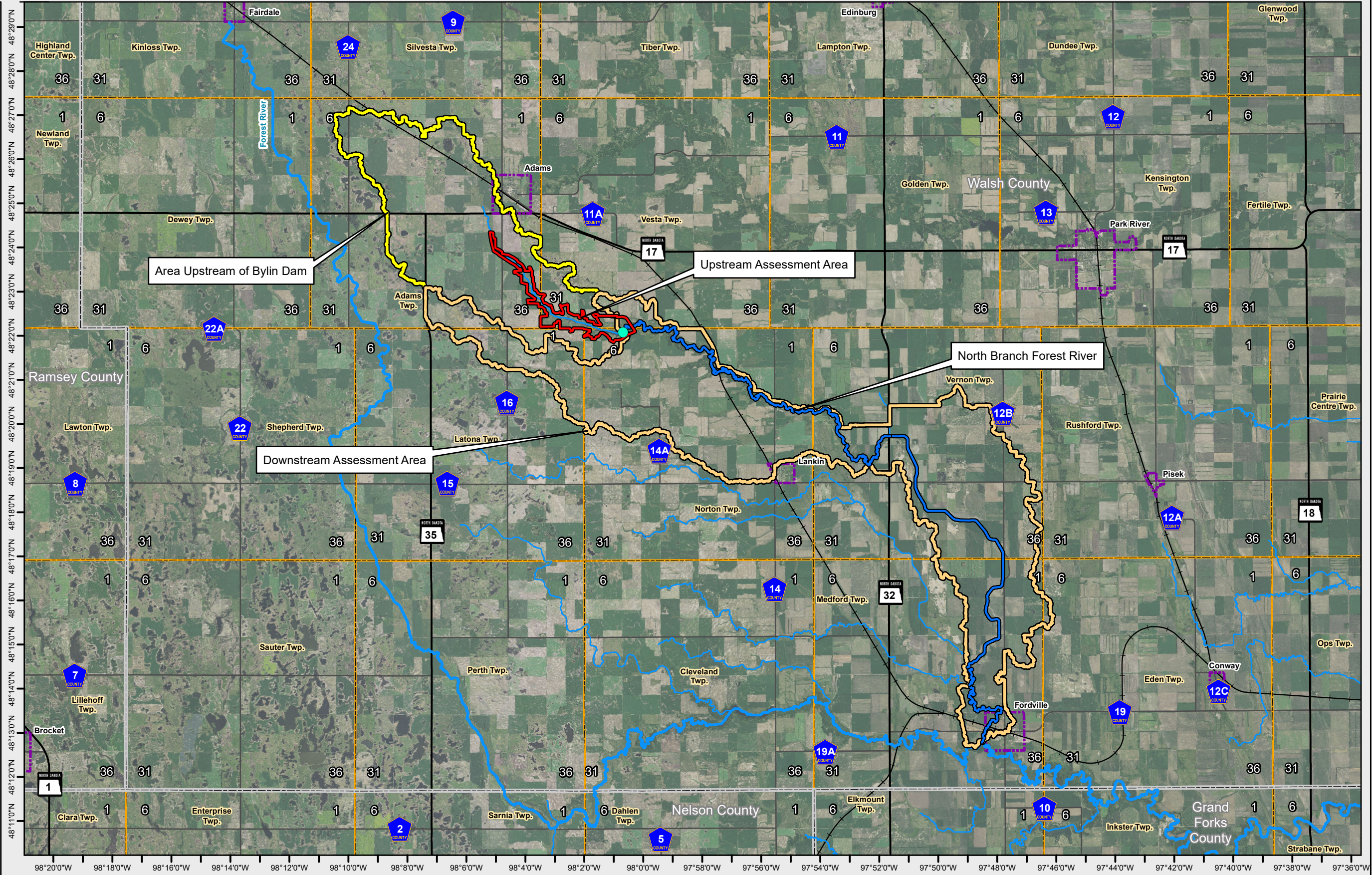
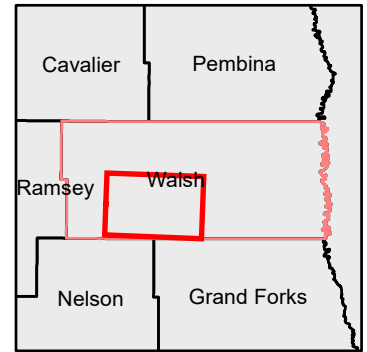
MAPPING NOTES

Digital orthophotography shown on this figure is from the North Dakota 2019 30cm (0.98ft) 4-band Image collection. Originally collected in Summer, 2019, through the National Agricultural Imagery Program (NAIP) with higher resolution than NAIP program specifications funded by the North Dakota Dept of Water Resources. Accessed through WMS.

The coordinate system used in the preparation of this map is North Dakota Walsh County State Plane 1983 Ground Coordinates, Lambert Conformal Conic Projection. Horizontal Datum is NAD 83, GRS80 Spheroid. Elevations on this map are referenced to the North American Vertical Datum of 1988.

Streets, Townships, Counties, and other locational data are sourced from the North Dakota Information Technology Geographic Information Systems HUB Data portal, or locally surveyed where appropriate.

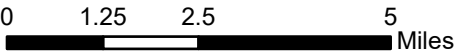
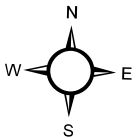
Map page size is Tabloid (11" x 17"). Accuracy of the map scales for varying paper sizes and is valid only if printed at this page size.



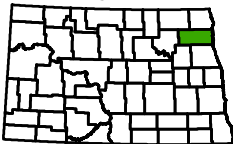
Assessment Areas

- Area Upstream of Bylin Dam (20.5 Sq. Mi.)
- Downstream Assessment Area (41.1 Sq. Mi.)
- Upstream Assessment Area (1.5 Sq. Mi.)

Bylin Dam



Walsh County, North Dakota



Appendix B Project Maps: Figure B-2 Assessment Areas Map

Scale:	Drawn by:	Checked by:	Project No.:	Date:	Sheet:
AS SHOWN	NRI	PDL	7135-0037	4/11/2022	2 of 3

HOUSTON
engineering, inc.

1401 21st Avenue North
Fargo, ND 58102
701.237.5065

DEFINITIONS

Upstream Assessment Area (U-AA): the zone near the reservoir where there may be a direct impact. The U-AA includes the dam site, the flood pool upstream from the dam, and a short stretch of river immediately downstream from the dam, for a total of approximately 950 acres.

Downstream Assessment Area (D-AA): the zone downstream where the environment may be affected if there would be changes in the flow of the North Branch Forest River. The D-AA includes 23 miles of the North Branch Forest River and the adjacent floodplain to the confluence of the North Branch Forest River with the Middle Branch Forest River, just west of Fordville, North Dakota

Upstream Area: the area that is not expected to be affected by the project but describes the context of the environmental conditions where appropriate (e.g., soils and erodibility potential).

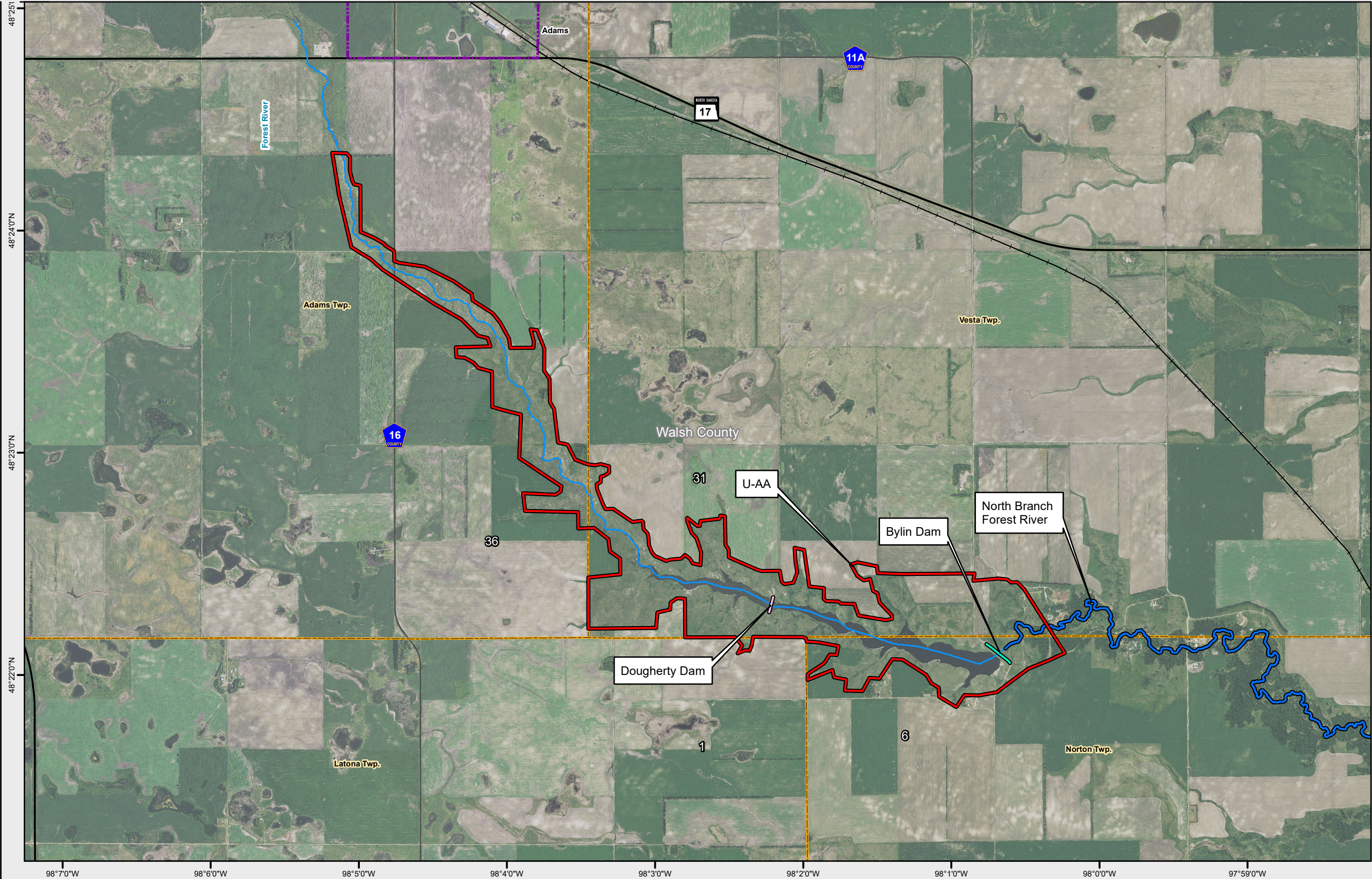
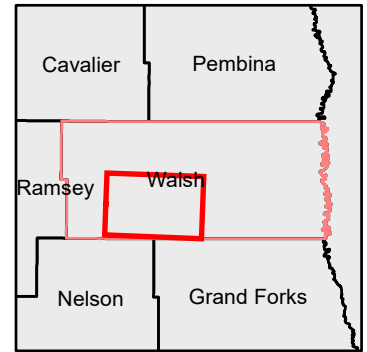
MAPPING NOTES

Digital orthophotography shown on this figure is from the North Dakota 2019 30cm (0.98ft) 4-band Image collection. Originally collected in Summer, 2019, through the National Agricultural Imagery Program (NAIP) with higher resolution than NAIP program specifications funded by the North Dakota Dept of Water Resources. Accessed through WMS.

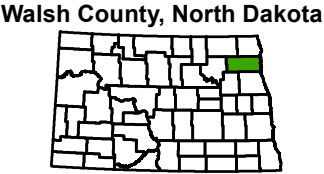
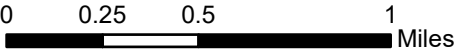
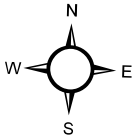
The coordinate system used in the preparation of this map is North Dakota Walsh County State Plane 1983 Ground Coordinates, Lambert Conformal Conic Projection. Horizontal Datum is NAD 83, GRS80 Spheroid. Elevations on this map are referenced to the North American Vertical Datum of 1988.

Streets, Townships, Counties, and other locational data are sourced from the North Dakota Information Technology Geographic Information Systems HUB Data portal, or locally surveyed where appropriate.

Map page size is Tabloid (11" x 17"). Accuracy of the map scales for varying paper sizes and is valid only if printed at this page size.



- Upstream Assessment Area (1.5 Sq. Mi.)
- Bylin Dam Alignment
- Dougherty Dam Alignment



Appendix B Project Maps: Figure B-3
Upstream Assessment Area Map

Scale: AS SHOWN	Drawn by: NRI	Checked by: PDL	Project No.: 7135-0037	Date: 4/11/2022	Sheet: 1 of 1
--------------------	------------------	--------------------	---------------------------	--------------------	------------------

HOUSTON
engineering, inc.

1401 21st Avenue North
Fargo, ND 58102
701.237.5065