



United States
Department of
Agriculture

Natural
Resources
Conservation
Service

Arizona

Basin Outlook Report

March 1, 2021



Issued by

Terry Cosby
Acting Chief
Natural Resources Conservation Service
U.S. Department of Agriculture

Released by

Keisha L. Tatem
State Conservationist
Natural Resources Conservation Service
Phoenix, Arizona

Basin Outlook Reports And Federal – State – Private Cooperative Snow Surveys

How forecasts are made

Most of the annual streamflow in Arizona originates as snowfall that has accumulated in the mountains during the winter and early spring. As the snowpack accumulates, hydrologists estimate the runoff that will occur when it melts. Measurements of snow water equivalent at selected manual snow courses and automated Snow Telemetry (SNOTEL) sites, along with precipitation and streamflow values, are used in statistical and simulation models to prepare runoff forecasts. These forecasts are coordinated between hydrologists in the Natural Resources Conservation Service (NRCS) the National Weather Service, and the Salt River Project.

Forecasts of any kind are not perfect. Streamflow forecast uncertainty arises from three primary sources: (1) uncertainty of future weather conditions, (2) uncertainty in the forecasting procedure, and (3) errors in the data. The forecast, therefore, must be interpreted not as a single value but rather as a range of values with specific probabilities of occurrence. The middle of the range is expressed by the 50% exceedance probability forecast, for which there is a 50% chance that the actual flow will be above, and a 50% chance that the actual flow will be below, this value. To describe the expected range around this 50% value, four other forecasts are provided, two smaller values (90% and 70% exceedance probability) and two larger values (30%, and 10% exceedance probability). For example, there is a 90% chance that the actual flow will be more than the 90% exceedance probability forecast.

The wider the spread among these values, the more uncertain the forecast. As the season progresses, forecasts become more accurate, primarily because a greater portion of the future weather conditions become known. This is reflected by a narrowing of the range around the 50% exceedance probability forecast. Users should take this uncertainty into consideration when making operational decisions by selecting forecasts corresponding to the level of risk they are willing to assume about the amount of water to be expected. If users anticipate receiving a lesser supply of water, or are concerned about having an adequate water supply, they may want to base their decisions on the 90% or 70% exceedance probability forecasts. On the other hand, if users anticipate receiving too much water, or are concerned about the threat of flooding, they may want to base their decisions on the 30% or 10% exceedance probability forecasts. Regardless of the forecast value users choose, they should be prepared to deal with either more or less water.



For more water supply and resource management information, contact:

Travis Kolling
Water Supply Specialist
230 N. First Ave., Suite 509
Phoenix, AZ 85003-1706
Phone: (602) 280-8834
Email: travis.kolling@az.usda.gov

The United States Department of Agriculture (USDA) prohibits discrimination in its programs on the basis of race, color, national origin, sex, religion, age, disability, political beliefs and marital or familial status. (Not all prohibited bases apply to all programs.) Persons with disabilities who require alternative means for communication of program information (Braille, large print, audiotape, etc.) should contact USDA's TARGET Center at 202-720-2600 (voice and TDD).

To file a complaint, write the Secretary of Agriculture, U.S. Department of Agriculture, Washington, D.C., 20250, or call 1-800-245-6340 (voice) or (202) 720-1127 (TDD). USDA is an equal employment opportunity employer.

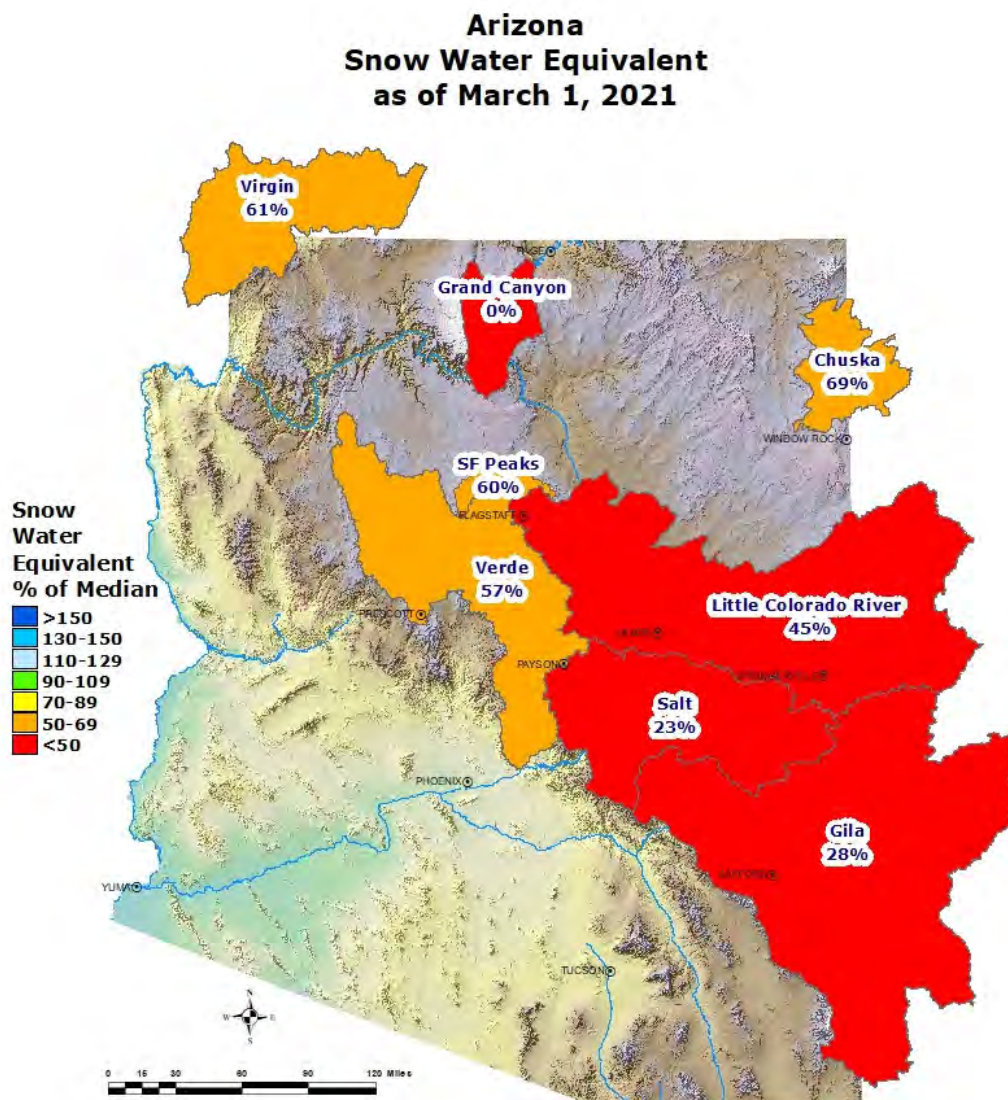
ARIZONA Basin Outlook Report as of March 1, 2021

SUMMARY

As of March 1, snowpack levels are well below normal throughout the major basins of the state. Precipitation for the month of February was well below normal to below normal in the major river basins. The Salt and Verde River reservoir system stands at 76 percent of capacity, while San Carlos Reservoir is at 2 percent of capacity. The forecast calls for well below normal runoff in all basins for the spring runoff period.

SNOWPACK

Snow water equivalent levels in the state's major river basins are well below normal, ranging from 23 percent of median in the Salt River Basin to 57 percent of median in the Verde River Basin. The statewide snowpack is well below normal at 42 percent of median.

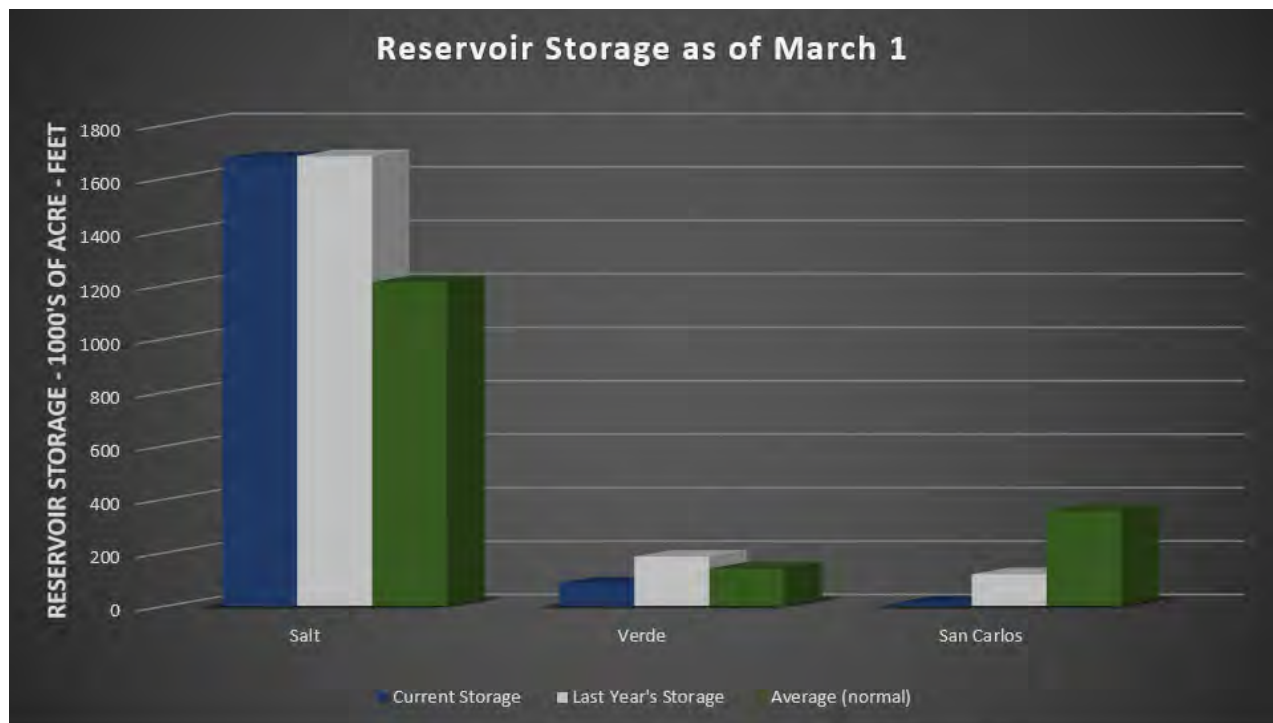


PRECIPITATION

Mountain data from NRCS SNOTEL sites and NWS Cooperator gages show that precipitation for February was well below average to below average in the major river basins. Cumulative precipitation since October 1 is well below normal throughout the basins. Please refer to the precipitation bar graphs found in this report for more information on precipitation levels in the basins.

RESERVOIR STORAGE

As of March 1, the Salt and Verde River reservoir system stands at 76 percent of capacity. San Carlos Reservoir is currently at 2 percent of capacity.



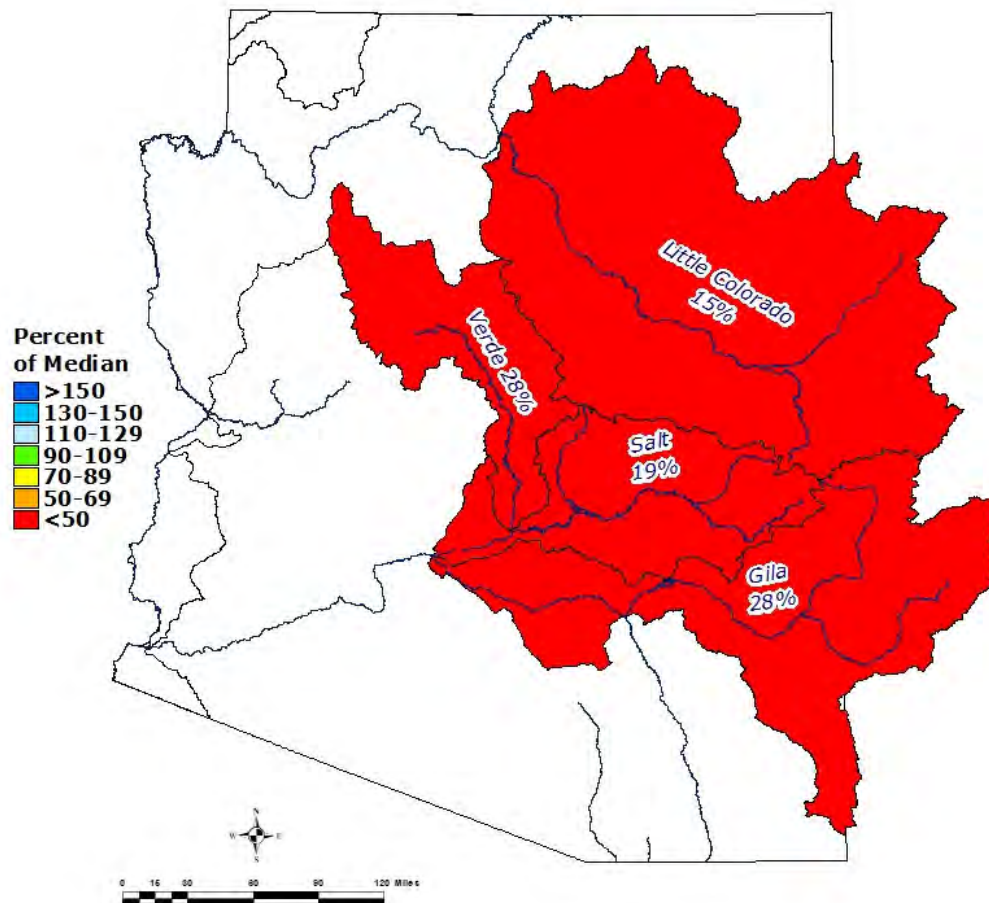
Key storage volumes displayed in thousands of acre-feet (x1000):

| <u>Reservoir</u> | <u>Current Storage</u> | <u>Last Year Storage</u> | <u>30-Year Average</u> | <u>Storage Capacity</u> |
|----------------------|------------------------|--------------------------|------------------------|-------------------------|
| Salt River System | 1674.9 | 1683.5 | 1181.0 | 2025.8 |
| Verde River System | 84.8 | 184.9 | 135.7 | 287.4 |
| San Carlos Reservoir | 13.3 | 118.9 | 324.9 | 875.0 |
| Lyman Lake | 7.5 | 8.8 | 11.8 | 30.0 |
| Lake Havasu | 573.9 | 584.6 | 562.7 | 619.0 |
| Lake Mohave | 1689.0 | 1675.0 | 1602.0 | 1810.0 |
| Lake Mead | 10622.0 | 11414.0 | 20297.0 | 26159.0 |
| Lake Powell | 9225.6 | 11997.0 | 17745.0 | 24322.0 |

STREAMFLOW

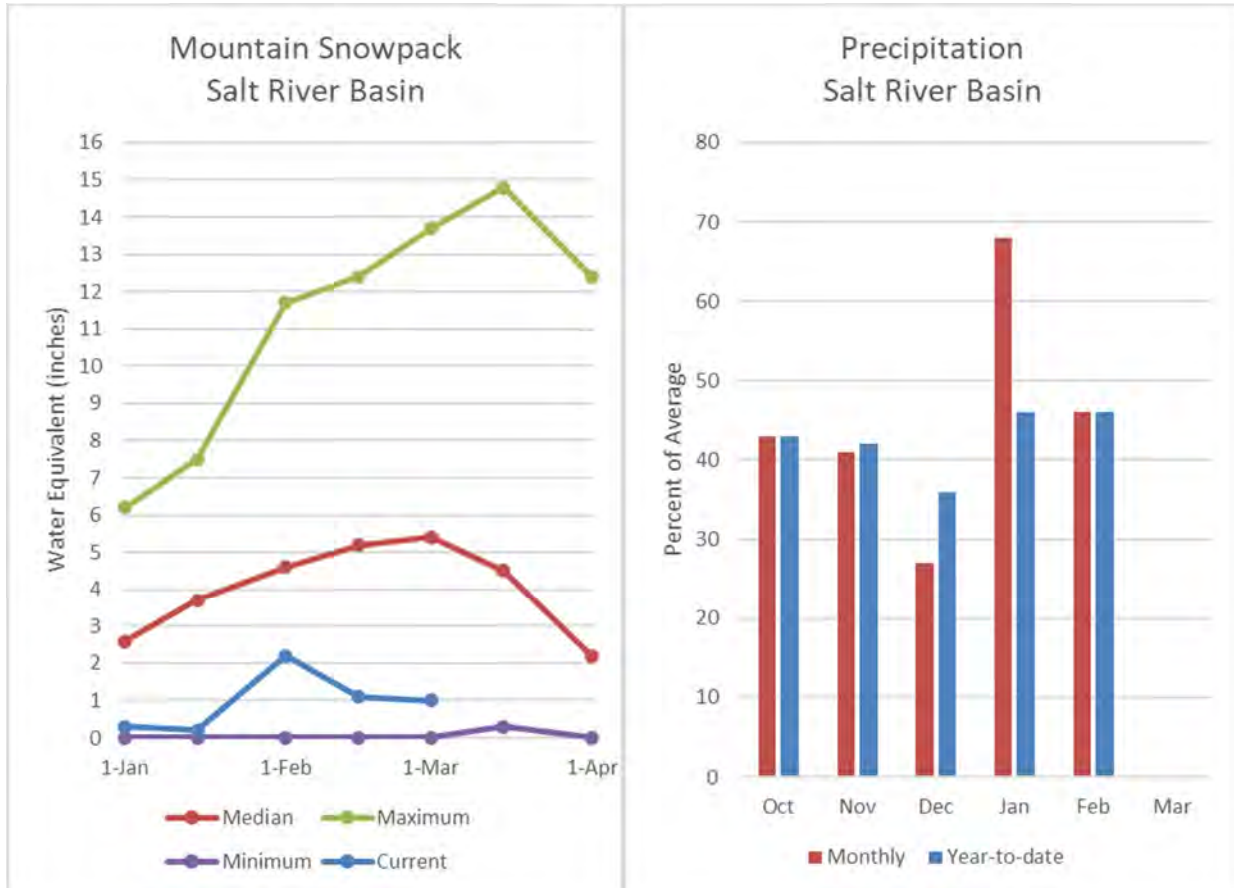
As of March 1, the forecast calls for well below normal streamflow for the spring runoff period, ranging from 15 percent of median in the Little Colorado River above Lyman Lake to 28 percent of median in the Gila River near Solomon, as well as, the Verde River above Horseshoe Dam. Total precipitation since the beginning of the water year has been well below average for the state, leaving soils dry and producing less than ideal conditions for runoff this spring. Please refer to the basin forecast tables found in this report for more information regarding water supply forecasts.

Arizona Spring Streamflow Forecasts as of March 1, 2021



SALT RIVER BASIN as of March 1, 2021

Well below normal streamflow levels are forecast for the basin. In the Salt River, near Roosevelt, the forecast calls for 19% of median streamflow through May, while at Tonto Creek, the forecast calls for 16% of median streamflow through May. Snow survey measurements show the Salt snowpack to be at 23% of median.



Salt
Streamflow Forecasts - March 1, 2021

| Salt | Forecast Period | Forecast Exceedance Probabilities for Risk Assessment Chance that actual volume will exceed forecast | | | | | | 30yr Avg (KAF) |
|--|-----------------|---|-----------|-----------|-------|-----------|-----------|----------------|
| | | 90% (KAF) | 70% (KAF) | 50% (KAF) | % Avg | 30% (KAF) | 10% (KAF) | |
| Salt R nr Roosevelt ³ | MAR | | | 25 | 22% | | | 114 |
| | MAR-MAY | 13.6 | 29 | 45 | 19% | 65 | 105 | 240 |
| Tonto Ck ab Gun Ck nr Roosevelt ³ | MAR | | | 2.8 | 18% | | | 15.4 |
| | MAR-MAY | 0.16 | 1.42 | 3.5 | 16% | 7 | 15.5 | 22 |

1) 90% and 10% exceedance probabilities are actually 95% and 5%

2) Forecasts are for unimpaired flows. Actual flow will be dependent on management of upstream reservoirs and diversions

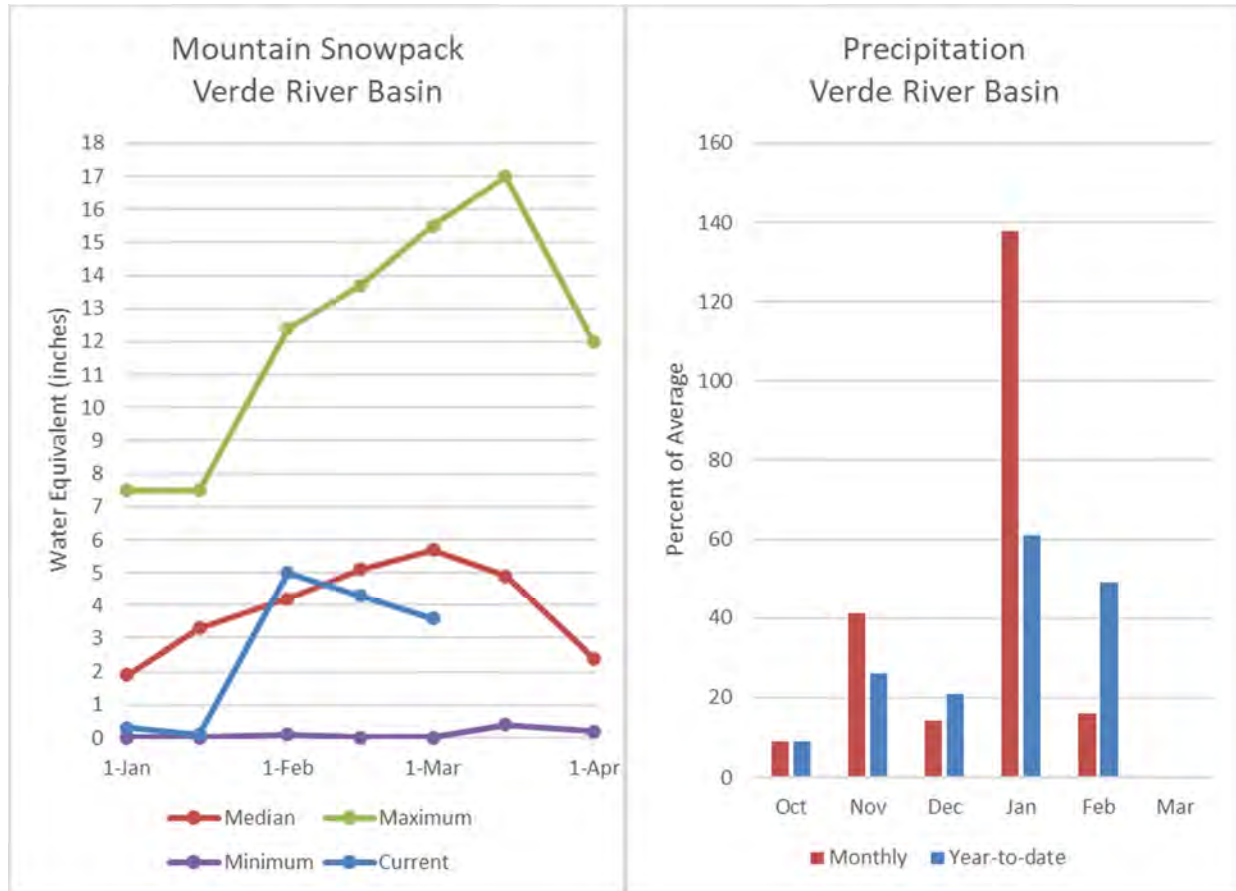
3) Median value used in place of average

| Reservoir Storage End of February, 2021 | Current (KAF) | Last Year (KAF) | Average (KAF) | Capacity (KAF) |
|--|---------------|-----------------|---------------|----------------|
| Salt River Reservoir System | 1674.9 | 1683.5 | 1302.0 | 2025.8 |
| Basin-wide Total | 1674.9 | 1683.5 | 1302.0 | 2025.8 |
| # of reservoirs | 1 | 1 | 1 | 1 |

| Watershed Snowpack Analysis March 1, 2021 | # of Sites | % Median | Last Year % Median |
|--|------------|----------|--------------------|
| Salt | 12 | 23% | 57% |

VERDE RIVER BASIN as of March 1, 2021

Well below normal streamflow levels are forecast for the basin. In the Verde River above Horseshoe Dam, the forecast calls for 28% of median streamflow through May. Snow survey measurements show the Verde snowpack to be at 57% of median.



Verde
Streamflow Forecasts - March 1, 2021

| |
|---|
| Forecast Exceedance Probabilities for Risk Assessment Chance that actual volume will exceed forecast |
|---|

| Verde | Forecast Period | 90% (KAF) | 70% (KAF) | 50% (KAF) | % Avg | 30% (KAF) | 10% (KAF) | 30yr Avg (KAF) |
|--|-----------------|-----------|-----------|-----------|-------|-----------|-----------|----------------|
| Verde R bl Tangle Ck ab Horseshoe Dam ³ | MAR | | | 12.5 | 21% | | | 59 |
| | MAR-MAY | 4.1 | 15.6 | 30 | 28% | 51 | 98 | 107 |

1) 90% and 10% exceedance probabilities are actually 95% and 5%

2) Forecasts are for unimpaired flows. Actual flow will be dependent on management of upstream reservoirs and diversions

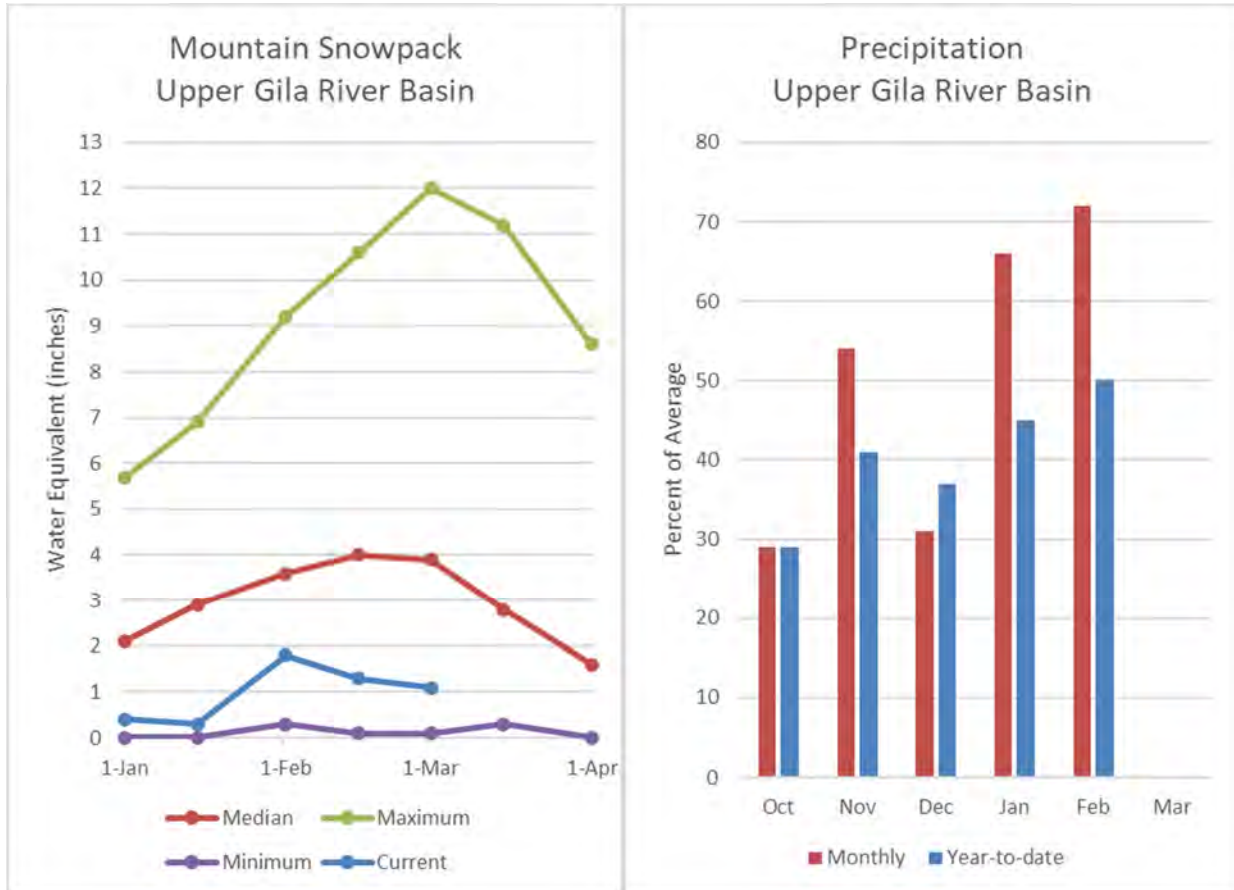
3) Median value used in place of average

| Reservoir Storage End of February, 2021 | Current (KAF) | Last Year (KAF) | Average (KAF) | Capacity (KAF) |
|--|---------------|-----------------|---------------|----------------|
| Verde River Reservoir System | 84.8 | 184.9 | 168.0 | 287.4 |
| Basin-wide Total | 84.8 | 184.9 | 168.0 | 287.4 |
| # of reservoirs | 1 | 1 | 1 | 1 |

| Watershed Snowpack Analysis March 1, 2021 | # of Sites | % Median | Last Year % Median |
|--|------------|----------|--------------------|
| Verde | 8 | 57% | 67% |

SAN FRANCISCO-UPPER GILA RIVER BASIN as of March 1, 2021

Well below normal streamflow levels are forecast for the basin. In the San Francisco River, at Clifton, the forecast calls for 34% of median streamflow levels through May. In the Gila River, near Solomon, the forecast calls for 28% of median streamflow levels through May. At San Carlos Reservoir, inflow to the lake is forecast at 19% of median through May. Snow survey measurements show the snowpack for this basin to be at 28% of median.



San Francisco-Upper Gila Streamflow Forecasts - March 1, 2021

 Forecast Exceedance Probabilities for Risk Assessment
 Chance that actual volume will exceed forecast

| San Francisco-Upper Gila | Forecast Period | 90% (KAF) | 70% (KAF) | 50% (KAF) | % Avg | 30% (KAF) | 10% (KAF) | 30yr Avg (KAF) |
|--|-----------------|-----------|-----------|-----------|-------|-----------|-----------|----------------|
| Gila R at Gila ³ | MAR-MAY | 5.6 | 9.5 | 13 | 38% | 17.3 | 25 | 34 |
| Gila R bl Blue Ck nr Virden ³ | MAR-MAY | 2.3 | 8.5 | 15 | 35% | 23 | 39 | 43 |
| San Francisco R at Glenwood ³ | MAR-MAY | 1.06 | 2.9 | 5 | 33% | 7.8 | 13.7 | 15.2 |
| San Francisco R at Clifton ³ | MAR-MAY | 1.31 | 6.8 | 13 | 34% | 21 | 37 | 38 |
| Gila R nr Solomon ³ | MAR | | | 14 | 37% | | | 38 |
| | MAR-MAY | 2.1 | 12.7 | 25 | 28% | 41 | 73 | 89 |
| San Carlos Reservoir Inflow ³ | MAR-MAY | 0.53 | 3 | 10 | 19% | 23 | 59 | 53 |

1) 90% and 10% exceedance probabilities are actually 95% and 5%

2) Forecasts are for unimpaired flows. Actual flow will be dependent on management of upstream reservoirs and diversions

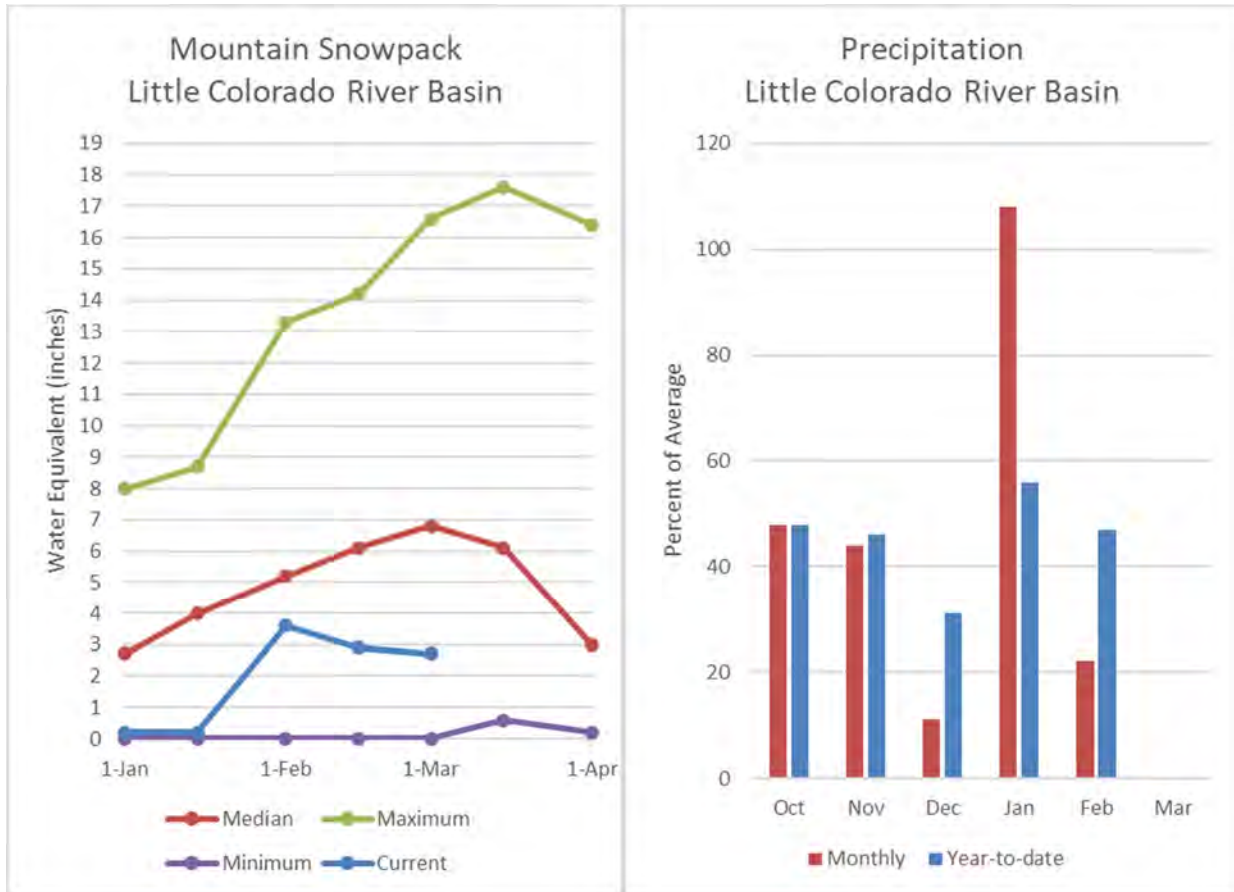
3) Median value used in place of average

| Reservoir Storage End of February, 2021 | Current (KAF) | Last Year (KAF) | Average (KAF) | Capacity (KAF) |
|--|---------------|-----------------|---------------|----------------|
| San Carlos Reservoir | 13.3 | 118.8 | 404.1 | 875.0 |
| Basin-wide Total | 13.3 | 118.8 | 404.1 | 875.0 |
| # of reservoirs | 1 | 1 | 1 | 1 |

| Watershed Snowpack Analysis March 1, 2021 | # of Sites | % Median | Last Year % Median |
|--|------------|----------|--------------------|
| San Francisco-Upper Gila | 9 | 28% | 63% |

LITTLE COLORADO RIVER BASIN as of March 1, 2021

Well below normal streamflow levels are forecast for the basin. In the Little Colorado River, above Lyman Lake, the forecast calls for 15% of median streamflow through June. At Blue Ridge (C.C. Cragin) Reservoir, inflow to the lake is forecast at 23% of median through May. Snowpacks along the southern headwaters of the Little Colorado River, and along the central Mogollon Rim, were measured at 45% and 48% of median, respectively.



Little Colorado Streamflow Forecasts - March 1, 2021

 Forecast Exceedance Probabilities for Risk Assessment
 Chance that actual volume will exceed forecast

| Little Colorado | Forecast Period | 90% (KAF) | 70% (KAF) | 50% (KAF) | % Avg | 30% (KAF) | 10% (KAF) | 30yr Avg (KAF) |
|--|-----------------|-----------|-----------|-----------|-------|-----------|-----------|----------------|
| Little Colorado R ab Lyman Lake ³ | MAR-JUN | 0.14 | 0.49 | 0.9 | 15% | 1.5 | 2.8 | 6 |
| Rio Nutria nr Ramah ³ | MAR-MAY | 0 | 0.05 | 0.2 | 18% | 0.53 | 1.49 | 1.12 |
| Zuni R ab Black Rock Reservoir ³ | MAR-MAY | 0 | 0 | 0.06 | 26% | 0.41 | 1.98 | 0.23 |
| Blue Ridge Reservoir Inflow ³ | MAR-MAY | 0.39 | 1.59 | 3.1 | 23% | 5.5 | 10.7 | 13.5 |
| Lake Mary Reservoir Inflow ³ | MAR-MAY | 0.15 | 0.49 | 0.9 | 31% | 1.5 | 2.8 | 2.9 |

1) 90% and 10% exceedance probabilities are actually 95% and 5%

2) Forecasts are for unimpaired flows. Actual flow will be dependent on management of upstream reservoirs and diversions

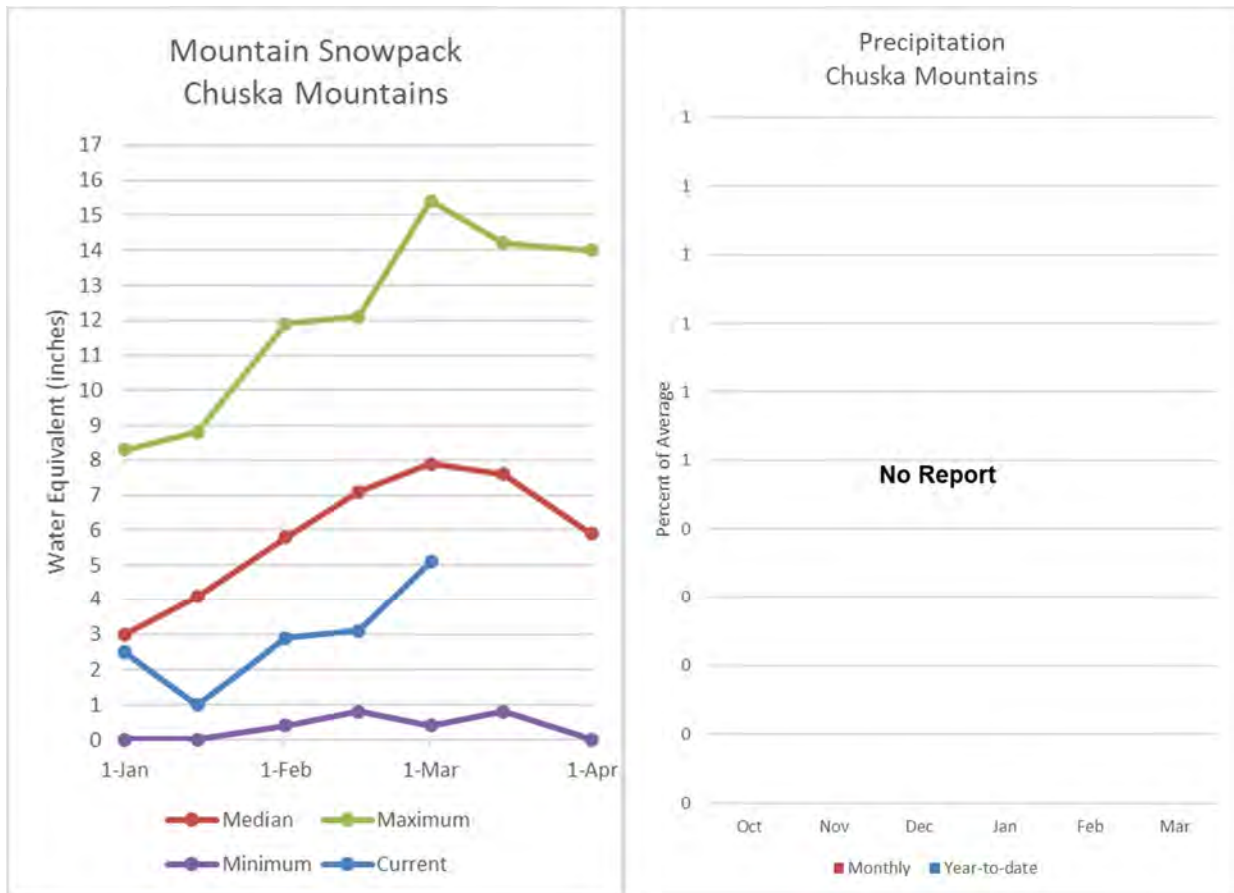
3) Median value used in place of average

| Reservoir Storage End of February, 2021 | Current (KAF) | Last Year (KAF) | Average (KAF) | Capacity (KAF) |
|--|---------------|-----------------|---------------|----------------|
| Lyman Reservoir | 7.5 | 8.8 | 12.9 | 30.0 |
| Basin-wide Total | 7.5 | 8.8 | 12.9 | 30.0 |
| # of reservoirs | 1 | 1 | 1 | 1 |

| Watershed Snowpack Analysis March 1, 2021 | # of Sites | % Median | Last Year % Median |
|--|------------|----------|--------------------|
| Little Colorado | 17 | 45% | 72% |
| Central Mogollon Rim | 3 | 48% | 31% |

CHUSKA MOUNTAINS as of March 1, 2021

Snow survey measurements conducted by staff of the Navajo Nation Water Management Branch show the Chuska snowpack to be at 69% of median. The forecast calls for well below normal runoff for Wheatfields Creek, Captain Tom Wash, and Bowl Canyon Creek.



Chuska-Defiance Streamflow Forecasts - March 1, 2021

| |
|---|
| Forecast Exceedance Probabilities for Risk Assessment Chance that actual volume will exceed forecast |
|---|

| Chuska-Defiance | Forecast Period | 90% (KAF) | 70% (KAF) | 50% (KAF) | % Avg | 30% (KAF) | 10% (KAF) | 30yr Avg (KAF) |
|------------------------------------|-----------------|-----------|-----------|-----------|-------|-----------|-----------|----------------|
| Captain Tom Wash nr Two Gray Hills | MAR-MAY | 0.25 | 0.61 | 1 | 38% | 1.53 | 2.6 | 2.6 |
| Wheatfields Ck nr Wheatfields | MAR-MAY | 0.15 | 0.52 | 0.9 | 43% | 1.39 | 2.3 | 2.1 |
| Bowl Canyon Ck ab Asaayi Lake | MAR-MAY | 0.2 | 0.41 | 0.6 | 46% | 0.82 | 1.21 | 1.3 |

1) 90% and 10% exceedance probabilities are actually 95% and 5%

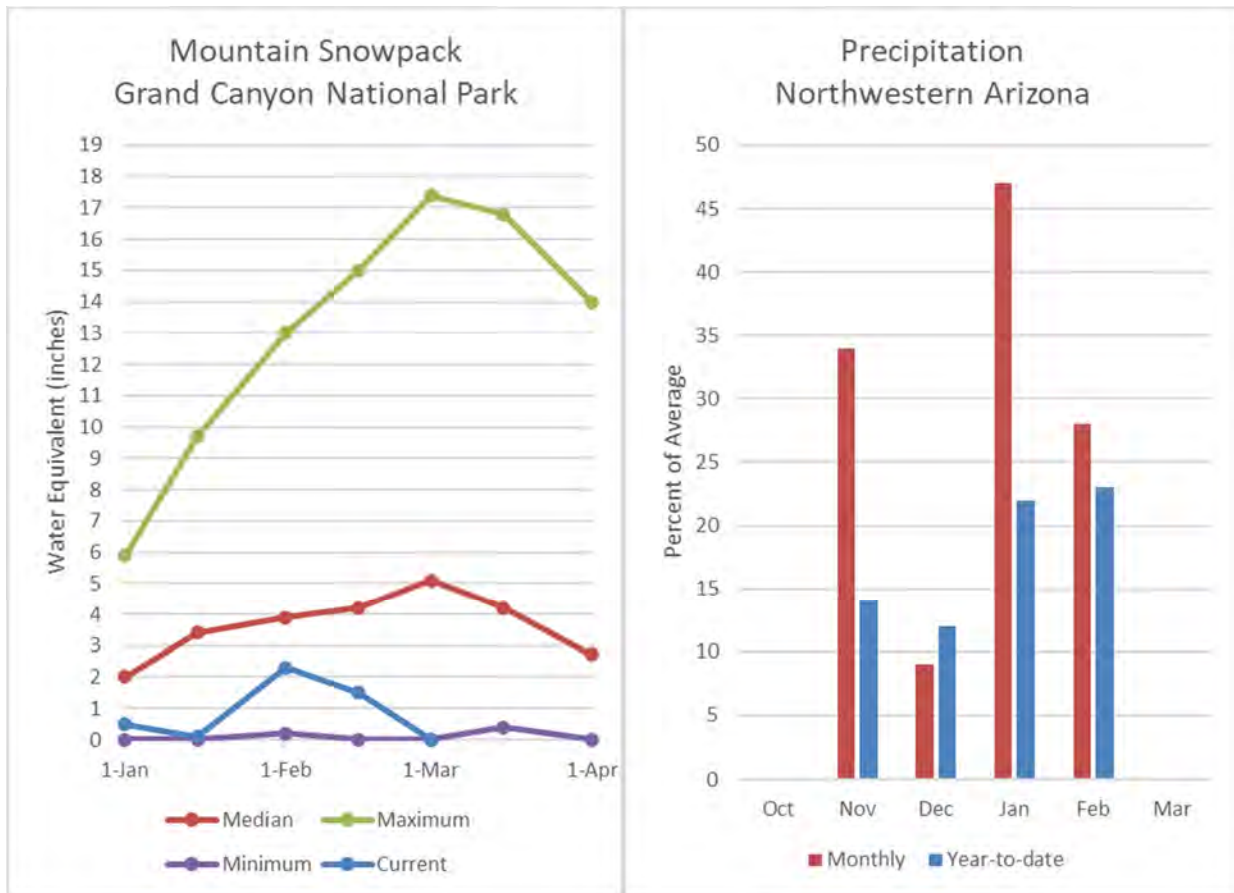
2) Forecasts are for unimpaired flows. Actual flow will be dependent on management of upstream reservoirs and diversions

3) Median value used in place of average

| Watershed Snowpack Analysis March 1, 2021 | # of Sites | % Median | Last Year % Median |
|--|------------|----------|-----------------------|
| Chuska-Defiance | 6 | 70% | 75% |
| Chuska Mountains | 5 | 69% | 76% |
| Defiance Plateau | 1 | 72% | 67% |

NORTHWESTERN ARIZONA as of March 1, 2021

On the Colorado River, well below normal inflow to Lake Powell is forecast at 28% of the 30-year average for the forecast period April-July. At the Grand Canyon, measurements conducted by park rangers show the snowpack to be at 0% of median.



Data Current as of: 3/5/2021 8:44:27 AM

Grand Canyon Streamflow Forecasts - March 1, 2021

Forecast Exceedance Probabilities for Risk Assessment
Chance that actual volume will exceed forecast

| Grand Canyon | Forecast Period | 90% (KAF) | 70% (KAF) | 50% (KAF) | % Avg | 30% (KAF) | 10% (KAF) | 30yr Avg (KAF) |
|---------------------------------|-----------------|-----------|-----------|-----------|-------|-----------|-----------|----------------|
| Lake Powell Inflow ² | APR-JUL | 1520 | 2450 | 3200 | 45% | 4050 | 5490 | 7160 |

1) 90% and 10% exceedance probabilities are actually 95% and 5%

2) Forecasts are for unimpaired flows. Actual flow will be dependent on management of upstream reservoirs and diversions

3) Median value used in place of average

| Reservoir Storage End of February, 2021 | Current (KAF) | Last Year (KAF) | Average (KAF) | Capacity (KAF) |
|--|---------------|-----------------|---------------|----------------|
| Lake Havasu | 573.9 | 584.6 | 560.2 | 619.0 |
| Lake Mohave | 1689.0 | 1675.0 | 1673.0 | 1810.0 |
| Lake Mead | 10622.0 | 11405.0 | 20575.0 | 26159.0 |
| Lake Powell | 9225.6 | 12011.5 | 17055.0 | 24322.0 |
| Basin-wide Total | 22110.5 | 25676.1 | 39863.2 | 52910.0 |
| # of reservoirs | 4 | 4 | 4 | 4 |

| Watershed Snowpack Analysis March 1, 2021 | # of Sites | % Median | Last Year % Median |
|--|------------|----------|--------------------|
| Grand Canyon | 1 | 0% | 0% |

Basinwide Summary: March 1, 2021
(Averages/Medians based on 1981-2010 reference period)

Snowpack Summary for March 1, 2021

| Salt | Network | Elevation (ft) | Depth (in) | SWE (in) | Median (in) | % Median | Last Year SWE (in) | Last Year % Median |
|--------------------|---------|-------------------|---------------|-------------|----------------|-------------|-----------------------|-----------------------|
| Baldy | SNOTEL | 9125 | 4 | 0.7 | 8.1 | 9% | 7.1 | 88% |
| Beaver Head | SNOTEL | 7990 | 0 | 0.0 | 5.2 | 0% | 0.1 | 2% |
| Buck Spring | SC | 7400 | 0 | 0.0 | 2.2 | 0% | 0.0 | 0% |
| Coronado Trail | SC | 8350 | 0 | 0.0 | 1.8 | 0% | 0.0 | 0% |
| Coronado Trail | SNOTEL | 8400 | 0 | 0.1 | 2.4 | 4% | 0.0 | 0% |
| Fort Apache | SC | 9160 | 17 | 4.0 | 8.2 | 49% | 8.0 | 98% |
| Hannagan Meadows | SNOTEL | 9020 | 8 | 3.2 | 10.3 | 31% | 9.9 | 96% |
| Hawley Lake | SNOTEL | 8300 | 27 | 7.4 | | | 11.6 | |
| Heber | SNOTEL | 7640 | | 0.7 | 4.5 | 16% | 0.2 | 4% |
| Maverick Fork | SNOTEL | 9200 | 5 | 1.8 | 8.9 | 20% | 9.8 | 110% |
| Promontory | SNOTEL | 7930 | | 6.1 | 11.3 | 54% | 5.4 | 48% |
| Wildcat | SNOTEL | 7850 | | 0.0 | 3.2 | 0% | 0.0 | 0% |
| Workman Creek | SNOTEL | 6900 | 0 | 0.0 | 5.1 | 0% | 0.0 | 0% |
| Basin Index | | | | | | 23% | | 57% |
| # of sites | | | | | | 12 | | 12 |

| Verde | Network | Elevation (ft) | Depth (in) | SWE (in) | Median (in) | % Median | Last Year SWE (in) | Last Year % Median |
|---------------------------|---------|-------------------|---------------|-------------|----------------|-------------|-----------------------|-----------------------|
| Baker Butte | SNOTEL | 7300 | 8 | 3.3 | 5.2 | 63% | 1.0 | 19% |
| Baker Butte No. 2 | SC | 7700 | 20 | 7.0 | 10.5 | 67% | | |
| Baker Butte Smt | SNOTEL | 7700 | 19 | 8.6 | | | 11.0 | |
| Bar M | SNOTEL | 6393 | 1 | 0.5 | | | 0.0 | |
| Chalender | SNOTEL | 7100 | 7 | 2.0 | | | 3.5 | |
| Chalender | SC | 7100 | | | 2.0 | | 0.4 | 20% |
| Fort Valley | SNOTEL | 7350 | 0 | 0.0 | | | 0.0 | |
| Fort Valley | SC | 7350 | 0 | 0.0 | 1.9 | 0% | 0.0 | 0% |
| Fry | SNOTEL | 7200 | 14 | 5.1 | 7.0 | 73% | 8.0 | 114% |
| Happy Jack | SC | 7630 | | | 4.0 | | 0.0 | 0% |
| Happy Jack | SNOTEL | 7630 | 17 | 4.3 | 5.9 | 73% | 4.7 | 80% |
| Mormon Mountain | SNOTEL | 7500 | 10 | 3.6 | 4.7 | 77% | 0.7 | 15% |
| Mormon Mountain Summit #2 | SC | 8470 | | | 11.2 | | | |
| Mormon Mtn Summit | SNOTEL | 8500 | 17 | 5.4 | | | 6.9 | |
| Newman Park | SC | 6750 | 3 | 1.8 | 2.0 | 90% | 0.0 | 0% |
| Snow Bowl #2 | SC | 11200 | 30 | 7.6 | 16.1 | 47% | 16.4 | 102% |
| White Horse Lake | SNOTEL | 7180 | 2 | 0.8 | 3.9 | 21% | 0.3 | 8% |
| Williams Ski Run | SC | 7720 | | | 8.2 | | | |
| Basin Index | | | | | | 57% | | 67% |
| # of sites | | | | | | 8 | | 8 |

| San Francisco Peaks | Network | Elevation (ft) | Depth (in) | SWE (in) | Median (in) | % Median | Last Year SWE (in) | Last Year % Median |
|---------------------|---------|-------------------|---------------|-------------|----------------|-------------|-----------------------|-----------------------|
| Snow Bowl #2 | SC | 11200 | 30 | 7.6 | 16.1 | 47% | 16.4 | 102% |
| Snowslide Canyon | SNOTEL | 9730 | 36 | 11.3 | 15.3 | 74% | 16.9 | 110% |
| Basin Index | | | | | | 60% | | 106% |
| # of sites | | | | | | 2 | | 2 |

| San Francisco-Upper Gila | Network | Elevation (ft) | Depth (in) | SWE (in) | Median (in) | % Median | Last Year SWE (in) | Last Year % Median |
|--------------------------|---------|-------------------|---------------|-------------|----------------|-------------|-----------------------|-----------------------|
|--------------------------|---------|-------------------|---------------|-------------|----------------|-------------|-----------------------|-----------------------|

| | | | | | | | | |
|---------------------|--------|------|----|-----|------|-----|------|------|
| Beaver Head | SNOTEL | 7990 | 0 | 0.0 | 5.2 | 0% | 0.1 | 2% |
| Coronado Trail | SC | 8350 | 0 | 0.0 | 1.8 | 0% | 0.0 | 0% |
| Coronado Trail | SNOTEL | 8400 | 0 | 0.1 | 2.4 | 4% | 0.0 | 0% |
| Frisco Divide | SNOTEL | 8000 | 1 | 0.1 | 2.4 | 4% | 2.4 | 100% |
| Hannagan Meadows | SNOTEL | 9020 | 8 | 3.2 | 10.3 | 31% | 9.9 | 96% |
| Lookout Mountain | SNOTEL | 8500 | 0 | 0.0 | 0.6 | 0% | 0.0 | 0% |
| Nutriosos | SC | 8500 | 0 | 0.0 | 0.6 | 0% | 0.0 | 0% |
| Nutriosos | SNOTEL | 8500 | 0 | 0.0 | | | 0.1 | |
| Signal Peak | SNOTEL | 8360 | 0 | 0.0 | 4.3 | 0% | 0.0 | 0% |
| Silver Creek Divide | SNOTEL | 9000 | 21 | 6.8 | 8.3 | 82% | 10.1 | 122% |
| State Line | SC | 8000 | | | 1.4 | | | |

| | | |
|--------------------|------------|------------|
| Basin Index | 28% | 63% |
| # of sites | 9 | 9 |

| Little Colorado | Network | Elevation (ft) | Depth (in) | SWE (in) | Median (in) | % Median | Last Year SWE (in) | Last Year % Median |
|---------------------------|---------|-------------------|---------------|-------------|----------------|-------------|-----------------------|-----------------------|
| Baker Butte | SNOTEL | 7300 | 8 | 3.3 | 5.2 | 63% | 1.0 | 19% |
| Baker Butte No. 2 | SC | 7700 | 20 | 7.0 | 10.5 | 67% | | |
| Baker Butte Smt | SNOTEL | 7700 | 19 | 8.6 | | | 11.0 | |
| Baldy | SNOTEL | 9125 | 4 | 0.7 | 8.1 | 9% | 7.1 | 88% |
| Boon | SC | 8140 | 7 | 2.0 | 4.5 | 44% | 2.4 | 53% |
| Buck Spring | SC | 7400 | 0 | 0.0 | 2.2 | 0% | 0.0 | 0% |
| Cheese Springs | SC | 8700 | 17 | 3.9 | 5.8 | 67% | 5.5 | 95% |
| Dan Valley | SC | 7640 | 8 | 1.8 | 3.5 | 51% | 2.2 | 63% |
| Fort Apache | SC | 9160 | 17 | 4.0 | 8.2 | 49% | 8.0 | 98% |
| Fort Valley | SNOTEL | 7350 | 0 | 0.0 | | | 0.0 | |
| Fort Valley | SC | 7350 | 0 | 0.0 | 1.9 | 0% | 0.0 | 0% |
| Heber | SNOTEL | 7640 | | 0.7 | 4.5 | 16% | 0.2 | 4% |
| Lake Mary | SC | 6930 | 0 | 0.0 | 3.4 | 0% | 0.0 | 0% |
| Maverick Fork | SNOTEL | 9200 | 5 | 1.8 | 8.9 | 20% | 9.8 | 110% |
| McGaffey | SC | 8120 | 2 | 1.0 | 1.4 | 71% | 0.4 | 29% |
| Mormon Mountain | SNOTEL | 7500 | 10 | 3.6 | 4.7 | 77% | 0.7 | 15% |
| Mormon Mountain Summit #2 | SC | 8470 | | | 11.2 | | | |
| Mormon Mtn Summit | SNOTEL | 8500 | 17 | 5.4 | | | 6.9 | |
| Nutriosos | SC | 8500 | 0 | 0.0 | 0.6 | 0% | 0.0 | 0% |
| Nutriosos | SNOTEL | 8500 | 0 | 0.0 | | | 0.1 | |
| Promontory | SNOTEL | 7930 | | 6.1 | 11.3 | 54% | 5.4 | 48% |
| Snow Bowl #2 | SC | 11200 | 30 | 7.6 | 16.1 | 47% | 16.4 | 102% |
| Snowslide Canyon | SNOTEL | 9730 | 36 | 11.3 | 15.3 | 74% | 16.9 | 110% |

| | | |
|--------------------|------------|------------|
| Basin Index | 45% | 72% |
| # of sites | 17 | 17 |

| Central Mogollon Rim | Network | Elevation (ft) | Depth (in) | SWE (in) | Median (in) | % Median | Last Year SWE (in) | Last Year % Median |
|----------------------|---------|-------------------|---------------|-------------|----------------|-------------|-----------------------|-----------------------|
| Baker Butte | SNOTEL | 7300 | 8 | 3.3 | 5.2 | 63% | 1.0 | 19% |
| Baker Butte No. 2 | SC | 7700 | 20 | 7.0 | 10.5 | 67% | | |
| Baker Butte Smt | SNOTEL | 7700 | 19 | 8.6 | | | 11.0 | |
| Heber | SNOTEL | 7640 | | 0.7 | 4.5 | 16% | 0.2 | 4% |
| Promontory | SNOTEL | 7930 | | 6.1 | 11.3 | 54% | 5.4 | 48% |

| | | |
|--------------------|------------|------------|
| Basin Index | 48% | 31% |
| # of sites | 3 | 3 |

| Chuska-Defiance | Network | Elevation (ft) | Depth (in) | SWE (in) | Median (in) | % Median | Last Year SWE (in) | Last Year % Median |
|-----------------|---------|-------------------|---------------|-------------|----------------|-------------|-----------------------|-----------------------|
|-----------------|---------|-------------------|---------------|-------------|----------------|-------------|-----------------------|-----------------------|

| | | | | | | | | |
|--------------------|--------|------|----|-----|------|------------|-----|------------|
| Beaver Spring | SC | 9220 | 25 | 7.2 | 10.0 | 72% | 8.3 | 83% |
| Beaver Spring | SNOTEL | 9200 | 19 | 5.8 | | | 8.5 | |
| Bowl Canyon | SC | 8980 | 20 | 5.6 | 8.7 | 64% | 7.7 | 89% |
| Fluted Rock | SC | 7800 | 10 | 2.6 | 3.6 | 72% | 2.4 | 67% |
| Hidden Valley | SC | 8480 | 17 | 5.0 | | | 6.2 | |
| Missionary Spring | SC | 7940 | 5 | 1.8 | 4.1 | 44% | 0.0 | 0% |
| Navajo Whiskey Ck | SNOTEL | 9050 | 20 | | | | 9.7 | |
| Tsaile Canyon #1 | SC | 8160 | 16 | 5.0 | 6.4 | 78% | 4.8 | 75% |
| Tsaile Canyon #3 | SC | 8920 | 24 | 6.8 | 8.8 | 77% | 8.0 | 91% |
| Whiskey Creek | SC | 9050 | 25 | 7.0 | 9.3 | 75% | | |
| Basin Index | | | | | | 70% | | 75% |
| # of sites | | | | | | 6 | | 6 |

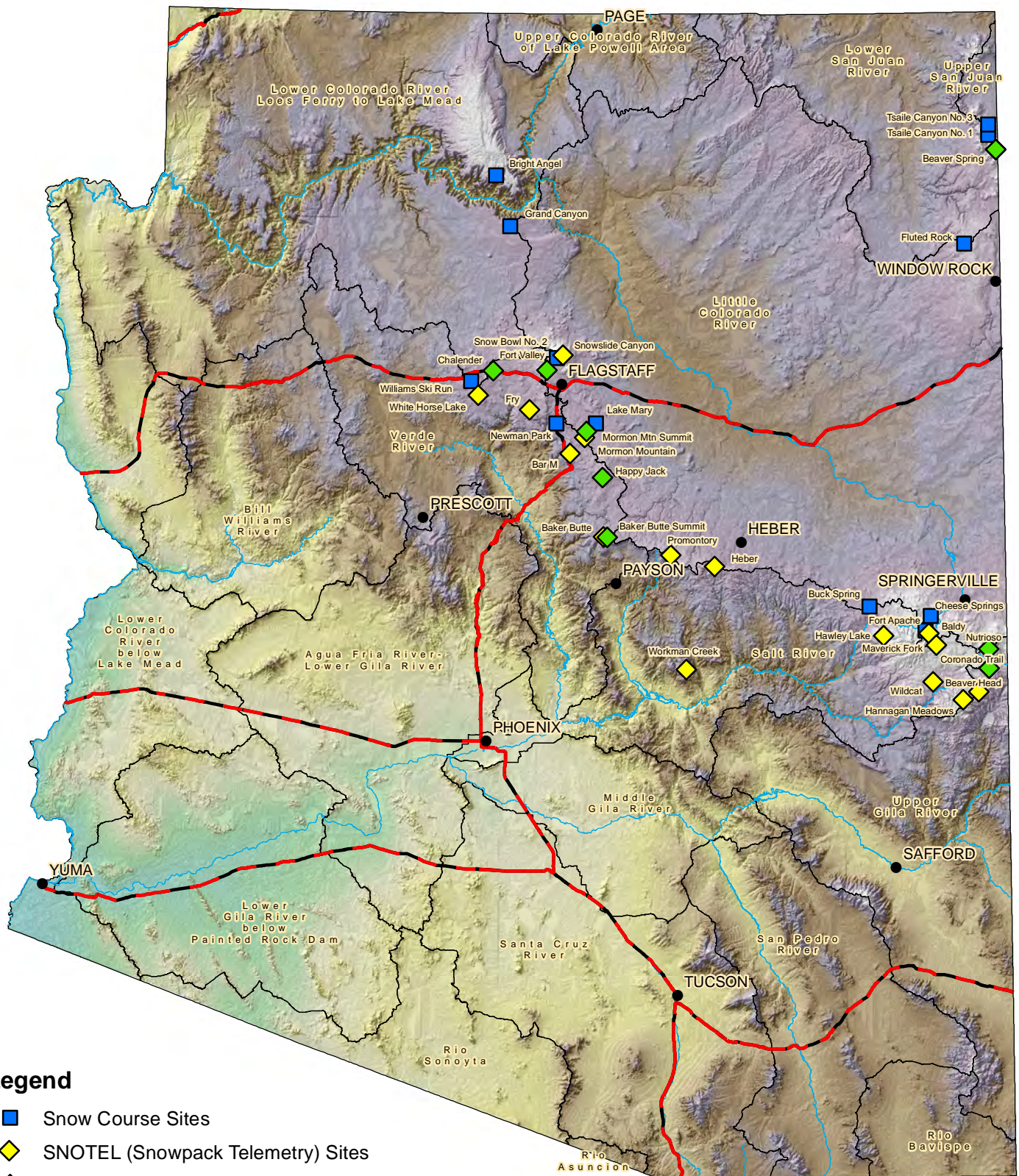
| Chuska Mountains | Network | Elevation (ft) | Depth (in) | SWE (in) | Median (in) | % Median | Last Year SWE (in) | Last Year % Median |
|-------------------|---------|-------------------|---------------|-------------|----------------|-------------|-----------------------|-----------------------|
| Beaver Spring | SC | 9220 | 25 | 7.2 | 10.0 | 72% | 8.3 | 83% |
| Beaver Spring | SNOTEL | 9200 | 19 | 5.8 | | | 8.5 | |
| Bowl Canyon | SC | 8980 | 20 | 5.6 | 8.7 | 64% | 7.7 | 89% |
| Hidden Valley | SC | 8480 | 17 | 5.0 | | | 6.2 | |
| Missionary Spring | SC | 7940 | 5 | 1.8 | 4.1 | 44% | 0.0 | 0% |
| Navajo Whiskey Ck | SNOTEL | 9050 | 20 | | | | 9.7 | |
| Tsaile Canyon #1 | SC | 8160 | 16 | 5.0 | 6.4 | 78% | 4.8 | 75% |
| Tsaile Canyon #3 | SC | 8920 | 24 | 6.8 | 8.8 | 77% | 8.0 | 91% |
| Whiskey Creek | SC | 9050 | 25 | 7.0 | 9.3 | 75% | | |
| Basin Index | | | | | | 69% | 76% | |
| # of sites | | | | | | 5 | 5 | |

| Defiance Plateau | Network | Elevation (ft) | Depth (in) | SWE (in) | Median (in) | % Median | Last Year SWE (in) | Last Year % Median |
|------------------|---------|-------------------|---------------|-------------|----------------|-------------|-----------------------|-----------------------|
| Fluted Rock | SC | 7800 | 10 | 2.6 | 3.6 | 72% | 2.4 | 67% |
| Basin Index | | | | | | 72% | 67% | |
| # of sites | | | | | | 1 | 1 | |

| Grand Canyon | Network | Elevation (ft) | Depth (in) | SWE (in) | Median (in) | % Median | Last Year SWE (in) | Last Year % Median |
|--------------------|---------|-------------------|---------------|-------------|----------------|-------------|-----------------------|-----------------------|
| Bright Angel | SC | 8400 | | | 8.7 | | 4.6 | 53% |
| Grand Canyon | SC | 7500 | 0 | 0.0 | 1.4 | 0% | 0.0 | 0% |
| Basin Index | | | | | | 0% | | 0% |
| # of sites | | | | | | 1 | | 1 |

| Virgin | Network | Elevation (ft) | Depth (in) | SWE (in) | Median (in) | % Median | Last Year SWE (in) | Last Year % Median |
|-----------------|---------|-------------------|---------------|-------------|----------------|-------------|-----------------------|-----------------------|
| Gardner Peak | SNOTEL | 8322 | 22 | 5.9 | 10.4 | 57% | 10.3 | 99% |
| Gutz Peak | SNOTEL | 6763 | 15 | 4.8 | 7.7 | 62% | 8.6 | 112% |
| Harris Flat | SNOTEL | 7792 | 11 | 3.7 | 5.4 | 69% | 8.7 | 161% |
| Kolob | SNOTEL | 9263 | 37 | 10.4 | 16.2 | 64% | 16.9 | 104% |
| Little Grassy | SNOTEL | 6065 | 0 | 0.0 | 2.7 | 0% | 0.2 | 7% |
| Long Flat | SNOTEL | 7982 | 14 | 4.2 | 7.3 | 58% | 7.4 | 101% |
| Long Valley Jct | SNOTEL | 7465 | 7 | 2.1 | 4.8 | 44% | 4.8 | 100% |
| Midway Valley | SNOTEL | 9827 | 48 | 11.9 | 17.3 | 69% | 16.1 | 93% |
| Webster Flat | SNOTEL | 9203 | 27 | 7.8 | 11.5 | 68% | 13.8 | 120% |
| Basin Index | | | | | | 61% | 104% | |
| # of sites | | | | | | 9 | 9 | |

Arizona Snow Survey Data Sites



Legend

- Snow Course Sites
- ◆ SNOTEL (Snowpack Telemetry) Sites
- ◆ SNOTEL and Snow Course Sites
- Basin Boundaries