



USDA United States
Department of
Agriculture



Directory

NRCS WASHINGTON STATE



The U.S. Department of Agriculture (USDA) prohibits discrimination in all its programs and activities on the basis of race, color, national origin, age, disability, and where applicable, sex, marital status, familial status, parental status, religion, sexual orientation, genetic information, political beliefs, reprisal, or because all or a part of an individual's income is derived from any public assistance program. (Not all prohibited bases apply to all programs.) Persons with disabilities who require alternative means for communication of program information (Braille, large print, audiotape, etc.) should contact USDA's TARGET Center at 202-720-2600 (voice and TDD).

To file a complaint of discrimination, write to USDA, Director, Office of Civil Rights, 1400 Independence Avenue, S.W., Washington D.C. 20250-9410 or call (800) 795-3272 (voice) or 202-720-6382 (TDD).

USDA is an equal opportunity provider, employer, and lender

**USDA NATURAL RESOURCES
CONSERVATION SERVICE (NRCS)**

**NRCS WASHINGTON
State Administrative Map
January 2022**

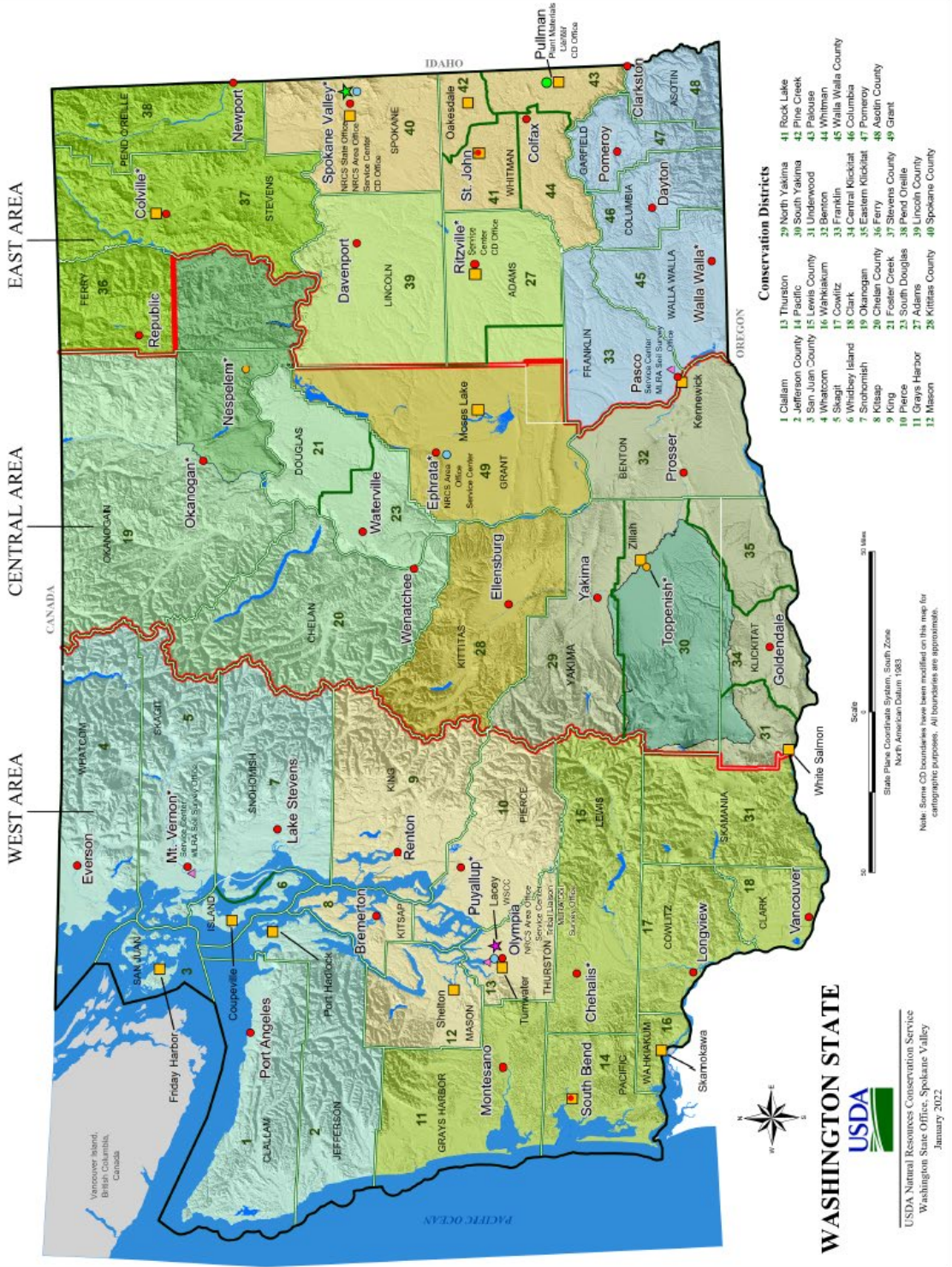
LEGEND

- ★ NRCS State Office
- ☆ Washington State Conservation Commission
- USDA Service Center
- NRCS Area Office
- Tribal DC Office
- Soil Survey Office
- Plant Materials Center
- NRCS Program Delivery Point and Conservation District Office
- Conservation District Office not located in a Service Center
- Washington State Boundary
- NRCS Area Boundaries
- Conservation District Boundaries
- County Boundaries
- Both Conservation District and County Boundaries
- Open Water

NRCS MULTI-COUNTY TEAMS

- EAST AREA: NORTHEAST TEAM, PALOUSE TEAM, WEST PALOUSE TEAM
- CENTRAL AREA: SNAKE RIVER TEAM, NORTH CENTRAL TEAM, COLVILLE TRIBAL TEAM, BIG BEND TEAM, SOUTH CENTRAL TEAM
- WEST AREA: YAKAMA TRIBAL TEAM, NORTHWEST TEAM, PUGET SOUND TEAM, SOUTHWEST TEAM

NOTE: The * next to the NRCS Service Center name denotes the location of the District Conservationist.



**USDA – Natural Resources Conservation Service
Directory of Personnel and Offices**

Office	Page
<u>State Office</u>	
State Conservationist.....	6
Public Affairs.....	6
Management-Strategy.....	6
Programs.....	6
Engineering.....	7
Ecological Sciences.....	7
Plant Materials Center.....	7
OCIO/ITS.....	8
<u>East Area</u>	
Area Office	9
• Pasco MLRA Soil Survey Office.....	9
Northeast Team	
• Colville Service Center.....	10
• Newport Service Center.....	10
• Republic Service Center.....	10
West Palouse Team	
• Davenport Service Center.....	11
• Ritzville Service Center.....	11
Palouse Team	
• Colfax Service Center.....	12
• Spokane Service Center.....	12
• St. John Field Office.....	12
Snake River Team	
• Clarkston Service Center.....	13
• Dayton Service Center.....	13
• Pasco Service Center.....	13
• Pomeroy Service Center.....	13
• Walla Walla Service Center.....	14

Central Area

Area Office	15
• Colville Tribal Office.....	15
• Yakama Tribal Office.....	15

North Central Team

• Okanogan Service Center.....	16
• Waterville Service Center.....	16
• Wenatchee Service Center	16

Big Bend Team

• Ellensburg Service Center	17
• Ephrata Service Center.....	17

South Central Team

• Goldendale Service Center	18
• Prosser Service Center.....	18
• Yakima Service Center.....	18

West Area

Area Office	19
• Mount Vernon Soil Survey Office.....	19
• Olympia Soil Survey Office.....	19

Northwest Team

• Lake Stevens Service Center.....	20
• Everson Service Center.....	20
• Mount Vernon Service Center.....	20
• Port Angeles Service Center.....	20

Puget Sound Team

• Olympia Service Center.....	21
• Bremerton Field Office	21
• Puyallup Service Center.....	21
• Renton Service Center.....	22

Southwest Team

- Vancouver Service Center 23
- Chehalis Service Center..... 23
- Longview Service Center..... 23
- Montesano Service Center..... 23
- South Bend Field Office..... 24

Washington State Civil Rights Committee 25

Earth Team Volunteer Program Coordinators..... 25

West Regional Conservationist’s Office..... 26

National Technology Support Centers..... 26

West Regional State Conservationists..... 27

Hotline Numbers..... 28

Personnel Index..... 29 - 32

NRCS/WA Site and Office ID..... 33 - 34

State Office Directory

**11707 E. Sprague Ave., Suite 301
Spokane Valley, WA 99206**

**Phone (509) 323-2900
Fax (855) 847-5492**

Roylene Comes At Night	State Conservationist	323-2900	roylene.comes-at-night@usda.gov
Georgia Sormun	Secretary	2992	georgia.sormun@usda.gov
Robin Slate	State Tribal Liaison		(253) 256-6743
	1011 E. Main, Suite 306		robin.slate@usda.gov
	Puyallup, WA 98372-6768		
Nick Vira	State Partnership Liaison		(360) 704-7758
	1835 Black Lake Blvd. SW, Suite D		nick.vira@usda.gov
	Olympia, WA 98512-5607		

Public Affairs

Fax: (855) 847-5492

Nathan Gallahan	State Public Affairs Specialist	323-2911	nathan.gallahan@usda.gov
Kristoffer Mills	Outreach Coordinator	2928	kristoffer.mills@usda.gov
Adrian Melendez	Media Specialist III	2952	adrian.melendez@usda.gov

Management & Strategy

Fax: (855) 847-5492

Chas Scripser	Assistant State Conservationist	323-2984	chas.scripser@usda.gov
Russ Sego	Business Services Specialist	2973	russ.sego@usda.gov
Kathleen Dickerson	Administrative Program Specialist (BSS)	2933	kathleen.dickerson@usda.gov
Samuel Riser	Financial Resource Specialist	2986	samuel.riser@usda.gov
Na Yang	Administrative Program Specialist (FRS)	2937	na.yang@usda.gov
Tiffany Verduco	Administrative Assistant	2919	tiffany.verduco@usda.gov
Vacant	Grants and Agreements Specialist	2941	
Wendy Diamond	Administrative Assistant (Contractor)	2938	wendy.diamond@usda.gov

Programs

Fax: (855) 847-5492

Keith Griswold	Assistant State Conservationist	323-2971	keith.griswold@usda.gov
Carlee Elliott	Easement Program Coordinator	2920	carlee.elliott@usda.gov
Heather Noel	Wetland/Easement Specialist	2981	heather.noel@usda.gov
Bobby Burken	Business Tools Coordinator	2976	robert.burken@usda.gov
Laura Williams	RCPP Coordinator	2988	laura.williams@usda.gov
Kathleen Wanner	Easement Program Specialist (State)	2930	kathleen.wanner@usda.gov
Brandt Becnel	Easement Program Specialist (East)	2940	franklin.becnel@usda.gov
Annie Dhaenens	Administrative Assistant	2913	annie.dhaenens@usda.gov
Misty Seiboldt	Program Liaison – East 11707 E. Sprague Avenue., Suite 301 Spokane Valley, WA 99206		(509) 343-2270 misty.seiboldt@usda.gov
Joyce Trevithick	Program Liaison – Central 2145 Basin St. SW, Suite D Ephrata, WA 98823-9451		(509) 717-3260 joyce.trevithick@usda.gov
Vacant	Program Liaison – West 1835 Black Lake Blvd. SW, Suite D Olympia, WA 98512-5607		(360) 704-7786
Scott Cook	Easement Program Specialist (West) 1835 Black Lake Blvd SW, Suite D Olympia, WA 98512-5607		(360) 704-7750 scott.cook@usda.gov

Engineering**Fax: (855) 847-5492**

Larry Johnson	State Conservation Engineer	323-2955	larry.a.johnson@usda.gov
Don Hanson	Design Engineer	2949	donald.hanson@usda.gov
Wes Durham	Civil Engineering Technician	2959	wes.durheim@usda.gov
Joe Gasperi	Geologist	2951	joe.gasper@usda.gov
Baylee McGinnis	Geologist	2950	baylee.mcginis@usda.gov
Lynelle Knehans	RCCP Civil Engineer	2954	lynelle.knehans@usda.gov
Julia Riley	Watershed Resources Planning Specialist	2941	julia.riley@usda.gov
Vacant	Office Automation Assistant		
Scott Pattee	Hydrologic Technician 2005 E. College Way, Suite 203 Mt. Vernon, WA 98273-2373		(360) 488-4826 scott.pattee@usda.gov
Joe Lange	Design Engineer 215 Melody Ln Wenatchee, WA 98801		joe.lange@usda.gov (509) 415-3687

Ecological Sciences**Fax: (855) 847-5492**

Bobby Evans	State Resource Conservationist	323-2961	robert.d.evans@usda.gov
Jenifer Coleson	Environmental Specialist	2964	jenifer.coleson@usda.gov
Richard Fleenor	Rangeland Management Specialist	2965	richard.fleenor@usda.gov
Carri Gaines	Forester	2956	carri.gaines@usda.gov
Joseph Dyer	Resource Soil Scientist	2974	joseph.dyer@usda.gov
Peter McBride	State Wildlife Biologist	2975	peter.mcbride2@usda.gov
Kevin Davis	State Agronomist 1606 Perry Street, Suite F Yakima, WA 98902-5795		kevin.c.davis@usda.gov (509) 367-8595
Toby Rodgers	NRI Coordinator 2005 E. College Way, Suite 203 Mount Vernon, WA 98273-2373		toby.rodgers@usda.gov (360) 488-4825
Angela Reseland	Farm Bill Coordinator (WDFW) 1111 Washington St. SE Olympia, WA 98501		angela.reseland@dfw.wa.gov (503) 298-7085

USDA-NRCS Plant Materials Center
4900 SE Terre View Dr., Bldg 195A
Pullman, WA 99163

Phone: (509) 330-5636
Fax: (855) 857-6405

Steven Lee	Plant Materials Center Manager	330-5641	steven.lee2@usda.gov
Dallas Spellman	Farmer	330-5638	dallas.spellman@usda.gov
Jessica Wayment	Agronomist	330-5639	jessica.wayment@usda.gov
Vacant	Biological Science Aide	330-5637	

OCIO/ITS

For IT Support, visit [Digital Workplace](#) or call the Centralized Help Desk at 877-873-0783.

East Area

East Area Office
11707 E. Sprague Avenue, Suite 302
Spokane Valley, WA 99206

Phone (509) 343-2265
Fax (855) 847-5494

Aubrey Hoxie	Area Conservationist	343-2272	aubrey.hoxie@usda.gov
Lisa Field	Administrative Support Assistant	2267	lisa.field@usda.gov
Misty Seaboldt	Program Liaison	2270	misty.seaboldt@usda.gov
Emily Pickron	Program Specialist	2268	emily.pickron@usda.gov
Grant Smith	Cultural Resources Specialist	2271	grant.smith@usda.gov
Cory Greer	Engineer	2269	ronald.greer@usda.gov
Steven Heisey	RCPP Coordinator	2273	steven.heisey@usda.gov

Vacant	Civil Engineer 1533 East Spokane St., Suite B Pasco, WA 99301		(509) 416-5713
--------	---	--	----------------

Jeff Kuhlmann	Resource Conservationist 805 S. Vista Point Drive, Suite 2 Colfax, WA 99111-9565		jeff.kuhlmann@usda.gov (509) 397-4301 Ext 118
---------------	--	--	--

Pasco MLRA Soil Survey Office
1533 East Spokane Street, Suite B
Pasco, WA 99301

Phone: (509) 545-8546
Fax: (509) 547-2007

Kelley Paup-Lefferts	MLRA Soil Survey Office Leader	416-5706	kelley.lefferts@usda.gov
Jennifer Fedenko	Soil Scientist	416-5710	jennifer.fedenko@usda.gov

Northeast Team
Stevens County, Pend Oreille, Ferry Conservation Districts

Stan Janowicz
 765 S. Main
 Colville, WA 99114

District Conservationist

Phone: (509) 685-0858 Ext. 115
 Fax: (855) 847-5495
 Email: stan.janowicz@usda.gov

Colville Service Center
 765 S. Main
 Colville, WA 99114

Phone: (509) 685-0858
 Fax: (855) 847-5495

Stevens County Conservation District (District is not co-located with Colville Service Center)

Stan Janowicz	District Conservationist	Ext. 115	stan.janowicz@usda.gov
Saundra Morris	Resource Conservationist	109	saundra.morris@usda.gov
Troy Lloyd	Soil Conservation Technician	116	troy.lloyd@usda.gov
Cheri Carrigan	Program Assistant	117	cheri.carrigan@usda.gov
Vacant	Forester		
Vacant	Rangeland Management Specialist		
Cameron Stoflet Spokane Tribe of Indians (509) 626-4426	NRCS Liaison	108	cameron.stoflet@usda.gov

Stevens County Conservation District
 232 Williams Lake Rd., Colville, WA 99114
 Phone: (509) 685-0937

Newport Service Center
 100 North Washington Ave., Room 110
 P.O. Box 280
 Newport, WA 99156-9070

Phone: (509) 447-4217
 Fax: (855) 847-5495

Pend Oreille Conservation District (District is not co-located with Newport Service Center)

Mark Simpson	Resource Conservationist	Ext. 100	mark.simpson2@usda.gov
--------------	--------------------------	----------	--

Pend Oreille Conservation District
 121 North Washington Avenue, Newport, WA 99156
 Phone: (509) 447-1155

Republic Service Center
 84 E. Delaware Avenue
 P.O. Box 315
 Republic, WA 99166-0315
 Ferry Conservation District

Phone: (509) 775-3473
 Fax: (855) 847-5495

Alexandra Reyes	Resource Conservationist	Ext. 102	alexandra.reyes@usda.gov
-----------------	--------------------------	----------	--

West Palouse Team
Lincoln County, Adams Conservation Districts

Cari Roepke
1310 Morgan Street
P.O. Box 46
Davenport, WA 99122-0046

District Conservationist

Phone: (509) 725-4501, Ext 110
Fax: (855) 847-5496
Email: cari.roepke@usda.gov

Davenport Service Center
1310 Morgan Street
P.O. Box 46
Davenport, WA 99122-0046
Lincoln County Conservation District

Phone: (509) 725-4501
Fax: (855) 847-5496

Cari Roepke	District Conservationist	Ext 110	cari.roepke@usda.gov
Dick Erickson	Resource Conservationist	113	dick.erickson@usda.gov
Brandon Davis	Soil Conservationist	122	brandon.davis@usda.gov
Lauren Samaniego	Soil Conservationist	115	lauren.samaniego@usda.gov
Casey Wren	Soil Conservation Technician	112	casey.wren@usda.gov
Vacant	Rangeland Management Specialist		

Ritzville Service Center
506 Weber Avenue, Suite B
Ritzville, WA 99169-2118

Phone: (509) 659-1761
Fax: (855) 847-5496

Adams Conservation District (District is not co-located with Ritzville Service Center)

Marika Kearsley	Resource Conservationist	Ext. 109	marika.kearsley@usda.gov
Eric Choker	Soil Conservationist	105	eric.choker@usda.gov
Vacant	Soil Conservationist		
Vacant	Rangeland Management Specialist		
Heidi Hennings	Biologist (Pheasants Forever)	115	heidi.hennings@usda.gov

Adams Conservation District
402 E. Main, Ritzville, WA 99169-1338
Phone: (509) 659-1553

Palouse Team

Whitman, Pine Creek, Palouse, Spokane County, Rock Lake Conservation Districts

Rich Edlund District Conservationist Phone: (509) 381-6727
8815 E. Mission Ave., Suite B Fax: (855) 847-5497
Spokane Valley, WA 99212-2532 Email: richard.edlund@usda.gov

Colfax Service Center Phone: (509) 397-4301
805 S. Vista Point Drive, Suite 2 Fax: (855) 847-5497
Colfax, WA 99111-9565

Whitman Conservation District; Palouse Conservation District; Pine Creek Conservation District
(Whitman, Palouse and Pine Creek Conservation Districts are not co-located with Colfax Service Center)

Stephen Johnson	Resource Conservationist	111	stephen.johnson@usda.gov
Sam Franzen	Soil Conservationist	115	samuel.franzen@usda.gov
Dave Weber	Soil Conservation Technician	119	dave.weber@usda.gov
Jeff Kuhlmann	Area Resource Conservationist	118	jeff.kuhlmann@usda.gov

Whitman Conservation District	Pine Creek Conservation District	Palouse Conservation District
601 N. Main, Suite A	401 S. SR27	1615 NE Eastgate Blvd., Suite H
Colfax, WA 99111	Oakesdale, WA 99158	Pullman, WA 99163
Phone: (509) 288-4644	Phone: (509) 285-5122	Phone: (509) 332-4101

Spokane Service Center Phone: (509) 381-6732
8815 E. Mission Ave., Suite B Fax: (855) 847-5497
Spokane Valley, WA 99212-2532

Spokane County Conservation District (District is not co-located with Spokane Service Center)

Rich Edlund	District Conservationist	381-6727	richard.edlund@usda.gov
Steve Sprecher	Soil Conservationist	381-6724	steve.sprecher@usda.gov
Tiffani Walker	Soil Conservationist	381-6728	tiffani.walker@usda.gov
Christina Seigerman	Program Support Specialist	381-6726	christina.seigerman@usda.gov

Spokane County Conservation District
4422 E. 8th Ave., Spokane Valley, WA 99212
Phone: (509) 535-7274

St. John Field Office Phone: (509) 648-3680
N. 3 Park Street Fax: (855) 847-5497
P.O. Box 438
St. John, WA 99171-0438
Rock Lake Conservation District

Vacant Soil Conservationist

Snake River Team

Asotin County, Columbia, Franklin, Pomeroy, Walla Walla Conservation Districts

Tracy Hanger District Conservationist Phone: (509) 956-3752
325 North 13th Avenue Fax: (855) 847-6385
Walla Walla, WA 99362-1700 Email: tracy.hanger@usda.gov

Clarkston Service Center Phone: (509) 552-8116
720 6th Street, Suite B Fax: (855) 847-6385
Clarkston, WA 99403-2012
Asotin County Conservation District

Mitch Ruchert	Resource Conservationist	552-8096	mitch.ruchert@usda.gov
Angela Williams	Rangeland Management Specialist	552-8116	angela.r.williams@usda.gov

Dayton Service Center Phone: (509) 382-2421
531 Cameron Street Fax: (855) 847-6385
Dayton, WA 99328
Columbia Conservation District (District is not co-located with Dayton Service Center)

Vacant	Resource Conservationist	404-3083	
Andres Castellanos	Forester	404-3084	andres.castellanos@usda.gov

Columbia Conservation District
202 S. 2nd St., Dayton, WA 99328
(509) 382-4773

Pasco Service Center Phone: (509) 545-8546
1533 East Spokane Street, Suite B Fax: (855) 847-6385
Pasco, WA 99301
Franklin Conservation District (District is not co-located with Pasco Service Center)

Carolyn Edenbo	Resource Conservationist	416-5718	carolyn.edenbo@usda.gov
Vacant	Soil Conservationist	416-5721	
Joe Navarro	Soil Conservation Technician	416-5711	joe.navarro@usda.gov
Vacant	Area Civil Engineer	416-5713	

Franklin Conservation District
1724 E. Superior Street, Pasco, WA 99301
Phone: (509) 416-0440

Pomeroy Service Center Phone: (509) 843-1997
USDA Building Fax: (855) 847-6385
804 W. Main Street
P.O. Box 468
Pomeroy, WA 99347-0468
Pomeroy Conservation District (District is not co-located with Pomeroy Service Center)

Rick Stauty	Soil Conservationist	566-2048	rick.stauty@usda.gov
Glenn Barber	Civil Engineering Technician	566-2046	glenn.barber@usda.gov

Pomeroy Conservation District
910 Main Street, Pomeroy, WA 99347
Phone: (509) 843-5008

Snake River Team

**Walla Walla Service Center
325 North 13th Avenue
Walla Walla, WA 99362-1700
Walla Walla County Conservation District**

**Phone: (509) 522-6347
Fax: (855) 847-6385**

Tracy Hanger	District Conservationist	956-3752	tracy.hanger@usda.gov
Bryce Krueger	Resource Conservationist	956-3754	bryce.krueger@usda.gov
Cameron Toerner	Soil Conservationist	956-3766	cameron.toerner@usda.gov
Katy Martin	Program Assistant	956-3765	katy.martin@usda.gov

Central Area

Central Area Office
2145 Basin St. SW, Suite D
Ephrata, WA 98823-9451

Phone (509) 754-2463
Fax (855) 847-6386

Austin Shero	Area Conservationist	717-3257	austin.shero@usda.gov
Vacant	Administrative Support Assistant	717-3265	
Joyce Trevithick	Program Liaison	717-3260	joyce.trevithick@usda.gov
Tracy Daily	Program Specialist	717-3268	tracy.daily@usda.gov
Paul Majer	Engineer	717-3259	paul.majer@usda.gov
Vacant	Cultural Resources Specialist	717-3263	
Vacant	Agronomist		
Kaley Ann Wisher	Biologist (Pheasants Forever)	717-3264	kaleyann.wisher@usda.gov
Konrad Bomberger	Resource Conservationist Yakima Service Center 1606 Perry Street, Suite F Yakima, WA 98902-5795		konrad.bomberger@usda.gov (509) 367-8583
Scott Scroggie	Soil Conservationist/Sage Grouse Coordinator Waterville Service Center 103 North Baker Street P.O. Box 428 Waterville, WA 98858-0428		scott.scroggie@usda.gov (509) 745-3008
Vacant	Civil Engineer Wenatchee Service Center 215 Melody Ln Wenatchee, WA 98801		(509) 415-3701

Colville Tribal Office
Nespelem, WA 99155

Catherine Cannon	Tribal District Conservationist		catherine.cannon@usda.gov (509)-422-2750 Ext 108
Hannah Tomlinson	Soil Conservationist		hannah.tomlinson@usda.gov (509) 422-2750 Ext. 111

Yakama Tribal Office
Mailing Address:
NRCS Tribal Liaison
Yakama Agency
Bureau of Indian Affairs, 401 Fort Rd., Room 217
P.O. Box 632, Toppenish, WA 98948

Phone: (509) 865-2255

Vacant	Tribal District Conservationist	Ext. 4171	
--------	---------------------------------	-----------	--

North Central Team

Okanogan, Foster Creek, South Douglas, Cascadia Conservation Districts

Sarah Troutman District Conservationist
1251 Second Ave. South, Ste. 101
Okanogan, WA 98840-9767

Phone: (509) 422-2750 Ext. 119
Fax: (855) 847-6387
Email: sarah.troutman@usda.gov

Okanogan Service Center
1251 Second Avenue South, Ste. 101
Okanogan, WA 98840-9767
Okanogan Conservation District

Phone: (509) 422-2750
Fax: (855) 847-6387

Sarah Troutman	District Conservationist	Ext. 119	sarah.troutman@usda.gov
Celeste Acord	Resource Conservationist	109	celeste.acord@usda.gov
Kaiza Jones	Soil Conservation Technician	124	kaiza.jones@usda.gov
Jeffrey Paulson	Forester	103	jeffrey.paulson@usda.gov
Ryan Hoff	Rangeland Management Specialist	104	ryan.hoff@usda.gov
Wendy Anderson	Program Assistant	105	wendyj.anderson@usda.gov

Waterville Service Center
103 North Baker Street
P.O. Box 428

Phone: (509) 745-8561
Fax: (855) 847-6387

Waterville, WA 98858-0428

Foster Creek Conservation District; South Douglas Conservation District

(Districts are not co-located with Waterville Service Center)

Lexi Gardner	Resource Conservationist	745-3007	lexi.gardner@usda.gov
Amanda Phillips	Soil Conservationist	745-3013	amanda.phillips@usda.gov
Michelle Mires	Soil Conservation Technician	745-3006	michelle.mires@usda.gov
Scott Scroggie	Soil Conservationist	745-3008	scott.scroggie@usda.gov
Alex Kunkel	Biologist (Pheasants Forever)	745-3010	alex.kunkel@usda.gov

Foster Creek Conservation District
203 S. Rainer
Waterville, WA 98858
Phone: (509) 888-6372

South Douglas Conservation District
206 N. Chelan
Waterville, WA 98858
Phone: (509) 745-9160

Wenatchee Service Center
215 Melody Ln
Wenatchee, WA 98801

Fax: (855) 847-6387

Cascadia Conservation District

(District is not co-located with Wenatchee Service Center)

Rural Development

Phone: (509) 663-4019

Fax: (509) 663-4631

Vacant	Resource Conservationist	415-3692	
Vacant	Area Civil Engineer	415-3701	
Joe Lange	Design Engineer	415-3687	joe.lange@usda.gov
Michael Brown	Biologist (Pheasants Forever)	415-3688	michael.brown@usda.gov

Cascadia Conservation District
14 N. Mission Street, Wenatchee, WA 98801
Phone: (509) 436-1601

Big Bend Team
Grant Conservation District, Kittitas County, Conservation District

Vacant 2145 Basin St. SW, Suite B Ephrata, WA 98823-9451	District Conservationist	Phone: (509) 717-3251 Fax: (855) 857-6400 Email:
---	---------------------------------	---

Ellensburg Service Center 2211 W. Dolarway Rd. Suite 6 Ellensburg, WA 98926 Kittitas County Conservation District	Phone: (509) 925-8585 Fax: (855) 857-6400
--	--

Holly Taylor	Resource Conservationist	115	holly.taylor@usda.gov
Reuben Garnett	Soil Conservationist	114	reuben.garnett@usda.gov

Ephrata Service Center 2145 Basin St. SW, Suite B Ephrata, WA 98823-9451 Grant Conservation District (District is not co-located with Ephrata Service Center)	Phone: (509) 754-2463 Fax: (855) 857-6400
--	--

Vacant	District Conservationist	717-3251	
Vacant	Resource Conservationist	717-3254	
Levi Norton	Soil Conservationist	717-3253	levi.norton@usda.gov
Kyle Reardon	Soil Conservationist	717-3262	kyle.reardon@usda.gov
Vacant	Civil Engineering Technician		
Vacant	Program Assistant	717-3256	

Columbia Basin Conservation District
1107 S. Juniper, Moses Lake, WA 98837
Phone: (509) 765-9618

South Central Team

Central & Eastern Klickitat, Benton, North & South Yakima Conservation Districts

Chris Wright District Conservationist Phone: (509) 367-8553
1606 Perry Street, Suite F Fax: (855) 857-6401
Yakima, WA 98902-5795 Email: christopherl.wright@usda.gov

Goldendale Service Center Phone: (509) 773-5822
1107 South Columbus Avenue Fax: (855) 857-6401
Goldendale, WA 98620-9268

Central Klickitat Conservation District; Eastern Klickitat Conservation District

Sergio Paredes	Resource Conservationist	Ext. 110	sergio.paredes@usda.gov
Channon Bighorn	Soil Conservation Technician	106	channon.bighorn@usda.gov
Juniper Cosner	Rangeland Management Specialist	107	juniper.cosner@usda.gov

Prosser Service Center Phone: (509) 786-1923
415 Wine Country Road Fax: (855) 857-6401
Prosser, WA 99350-9555

Benton Conservation District (District is not co-located with Prosser Service Center)

Melissa Pierce	Resource Conservationist	Ext. 111	melissa.pierce@usda.gov
Vacant	Soil Conservationist	101	
Vacant	Soil Conservationist	104	
Vacant	Rangeland Management Specialist		

Benton Conservation District
10121 W. Clearwater Ave., Suite 101, Kennewick, WA 99336
Phone: (509) 736-6000

Yakima Service Center Phone: (509) 367-8586
1606 Perry Street, Suite F Fax: (855) 857-6401
Yakima, WA 98902-5795

North Yakima Conservation District, South Yakima Conservation District
(South Yakima Conservation District is not co-located with Yakima Service Center)

Chris Wright	District Conservationist	367-8553	christopherl.wright@usda.gov
Elizabeth Keith	Resource Conservationist	367-8554	elizabeth.keith@usda.gov
Vacant	Soil Conservationist		
Martin Rodriguez	Civil Engineer Technician	367-8593	martin.rodriguez@usda.gov
Oscar Tobias	Civil Engineer Technician	367-8597	oscar.tobias@usda.gov
Vacant	Program Assistant	367-8595	
Konrad Bomberger	Area Resource Conservationist	367-8583	konrad.bomberger@usda.gov
Kevin Davis	State Agronomist	367-8595	kevin.c.davis@usda.gov

South Yakima Conservation District
200 Cheyne Rd., Zillah, WA 98953-9764
Phone: (509) 829-9025

West Area

West Area Office

1835 Black Lake Blvd. SW, Suite D
Olympia, WA 98512-5607

Phone (360) 704-7740

Fax (855) 857-6403

David Rose	Area Conservationist	704-7782	david.rose@usda.gov
Eun Lee	Administrative Assistant	704-7781	eun.lee@usda.gov
Vacant	Program Liaison	704-7786	
Vacant	Program Specialist		
Noah Bates	Resource Conservationist	704-7790	noah.bates@usda.gov
Marty Chaney	Agronomist	704-7751	marty.chaney@usda.gov
Chris Clark	Civil Engineer	704-7783	christopher.clark@usda.gov
Vacant	Cultural Resources Specialist	704-7787	
Scott Cook	Easement Program Specialist	704-7750	scott.cook@usda.gov
Nick Vira	State Partnership Liaison	704-7758	nick.vira@usda.gov
Nicole Warren	Biologist (Pheasants Forever)	704-7726	nicole.warren@usda.gov
Erica Fifer	Area Engineer 2005 E. College Way, Suite 203 Mt. Vernon, WA 98273-2373		erica.fifer@usda.gov (360) 488-4822
Vacant	Agricultural Engineer 2005 E. College Way, Suite 203 Mt. Vernon, WA 98273-2373		
Rachel Maggi	Area Biologist 120 NE 136 th Ave., Suite 205 Vancouver, WA 98684		rachel.maggi@usda.gov (360) 768-3048
Jared Hamman	RCPP Coordinator 2005 E. College Way, Suite 203 Mt. Vernon, WA 98273-2373		jared.hamman@usda.gov (360) 488-4821

Mount Vernon Soil Survey Office

2005 E. College Way, Suite 203
Mount Vernon, WA 98273-2373

Phone: (360) 428-7684

Fax: (877) 716-5752

Crystal Briggs	Soil Scientist	488-4830	crystal.briggs@usda.gov
Carl Fuller	Soil Scientist	488-4845	carl.fuller@usda.gov
Erin Kreutz	Ecologist	488-4844	erin.kreutz@usda.gov

Olympia Soil Survey Office

1835 Black Lake Blvd. SW, Suite D
Olympia, WA 98512-5607

Phone: (360) 704-7740

Fax: (855) 857-6403

Erik Dahlke	Soil Survey Office Leader	704-7755	erik.dahlke@usda.gov
Max Ross	Soil Scientist	704-7788	max.ross@usda.gov
Elizabeth Carp	Soil Scientist	704-7712	elizabeth.carp@usda.gov

Northwest Team
Snohomish, Whatcom, Skagit, San Juan Islands,
Whidbey Island, Clallam, Jefferson County Conservation Districts

Sarah Tanuvasa District Conservationist Phone: (360) 488-4819
 2005 E. College Way, Suite 203 Fax: (877) 716-5752
 Mount Vernon, WA 98273-2373 Email: sarah.tanuvasa@usda.gov

Lake Stevens Service Center Phone: (425) 334-2828
 528 91st Avenue NE, Suite C Fax: (877) 716-5752
 Lake Stevens, WA 98258
Snohomish Conservation District

Joshua Hall Resource Conservationist 595-3282 joshua.hall2@usda.gov

Everson Service Center Phone: (360) 318-8121
 914 Citadel Drive Fax: (877) 716-5752
 Everson, WA 98247

Whatcom Conservation District (District is not co-located with Everson Service Center)

Alexander Hall Resource Conservationist 592-6095 alexander.hall@usda.gov
 Joy Hawley Soil Conservationist 592-6100 joy.hawley@usda.gov

Whatcom Conservation District
 6975 Hannegan Rd, Lynden, WA 98264
 Phone: (360) 428-4313

Mount Vernon Service Center Phone: (360) 428-7684
 2005 E. College Way, Suite 203 Fax: (877) 716-5752
 Mount Vernon, WA 98273-2373

Skagit Conservation District; San Juan Islands Conservation District, Whidbey Island Conservation District
 (San Juan Islands, Skagit and Whidbey Island Conservation Districts are not co-located with Mt Vernon Service Center)

Sarah Tanuvasa	District Conservationist	488-4819	sarah.tanuvasa@usda.gov
Robin Buckingham	Resource Conservationist	488-4836	robin.buckingham@usda.gov
Bay Young	Soil Conservationist	488-4848	bay.young@usda.gov
Kathryn Smith	Forester	488-4820	kathryn.e.smith@usda.gov
Marty Rankin	Civil Engineering Technician	488-4823	marty.rankin@usda.gov
Joyal Dirusso	Program Support Assistant	488-4328	joyal.dirusso@usda.gov
Erica Fifer	Area Engineer	488-4822	erica.fifer@usda.gov
Dillion Sprague	Civil Engineer	488-4829	dillion.sprague@usda.gov
Jared Hamman	RCPP Coordinator	488-4821	jared.hamman@usda.gov
Scott Pattee	Hydrologic Technician	488-4826	scott.pattee@usda.gov
Toby Rodgers	NRI Coordinator	488-4825	toby.rodgers@usda.gov

San Juan Islands CD
 350 Guard Street
 Friday Harbor, WA 98250-7910
 Phone: (360) 378-6621

Whidbey Island CD
 404 NE Center
 Coupeville, WA 98239-0490
 Phone: (360) 678-4708

Skagit CD
 2021 E. College Way, Suite 203
 Mount Vernon, WA 98273
 Phone: (360) 428-4313

Port Angeles Service Center Phone (360) 452-8994
 1601 E. Front Street, Suite A Fax: (877) 716-5752
 Port Angeles, WA 98362-4646

Clallam County Conservation District; Jefferson County Conservation District
 (Districts are not co-located with Port Angeles Service Center)

Vacant Resource Conservationist

Jefferson County Conservation District
 205 W. Patison Street, Port Hadlock, WA 98339
 Phone: (360) 385-4105

Clallam County Conservation District
 228 W. 1st St., Ste H, Port Angeles, WA 98362
 Phone (360) 775-3747

Puget Sound Team
Thurston, Kitsap, Mason, Pierce, King Conservation Districts

Amy Hendershot
Puyallup Executive Park
1011 E. Main, Suite 306
Puyallup, WA 98372-6768

District Conservationist

Phone: (253) 256-6741
Fax: (855) 857-6403
Email: amy.hendershot@usda.gov

Olympia Service Center
1835 Black Lake Blvd. SW, Suite E
Olympia, WA 98512-5607

Phone: (360) 704-7740
Fax: (855) 857-6403

Thurston Conservation District (District is not co-located with the Olympia Service Center)

Rebecca Anderson Bellanca	Resource Conservationist	704-7741	rebecca.anderson@usda.gov
Erin Gutierrez	Soil Conservationist	704-7742	erin.gutierrez@usda.gov
Jim Farley	Civil Engineering Technician	704-7754	james.farley@usda.gov

Thurston Conservation District
2918 Ferguson Street SW, Ste. A, Tumwater, WA 98512
Phone: (360) 754-3588

Bremerton Field Office
500 Pacific Avenue, Suite 301
Bremerton, WA 98337

Phone: (360) 813-9710
Fax: (855) 857-6403

Kitsap Conservation District; Mason Conservation District
(Kitsap and Mason Conservation Districts are not co-located with the Bremerton Field Office)

Frank Curtin	Resource Conservationist	813-9709	frank.curtin@usda.gov
Sean McDonagh	Resource Conservationist	813-9707	sean.mcdonagh@usda.gov

Kitsap Conservation District
10332 Central Valley Road NE, Poulsbo, WA 98370
Phone: (360) 204-5529

Mason Conservation District
450 W. Business Park Road, Shelton, WA 98584
Phone: (360) 427-9436

Puyallup Service Center
Puyallup Executive Park
1011 E. Main, Suite 306
Puyallup, WA 98372-6768

Phone: (253) 845-9272
Fax: (855) 857-6403

Pierce Conservation District (District is not co-located with the Puyallup Service Center)

Amy Hendershot	District Conservationist	256-6741	amy.hendershot@usda.gov
Vacant	Resource Conservationist	256-6751	
Vacant	Soil Conservationist	256-6744	
Vacant	Program Assistant	256-6742	
Robin Slate	State Tribal Liaison	256-6743	robin.slate@usda.gov

Pierce Conservation District
308 W. Stewart Ave., Puyallup, WA, 98371
Phone: (253) 845-9770

Puget Sound Team

Renton Service Center
941 Powell Avenue SW, Suite 102
Renton, WA 98057-2992

Phone: (425) 277-5580
Fax: (855) 857-6403

King Conservation District (District is not co-located with the Renton Service Center)

Lynn Khuat	Resource Conservationist	Ext 124	lynn.khuat@usda.gov
John Larsen	Soil Conservationist	109	john.larsen@usda.gov

King Conservation District
1107 SW Grady Way, Suite 130, Renton, WA 98057
Phone: (425) 282-1900

Southwest Team

Clark, Underwood, Lewis County, Cowlitz, Wahkiakum, Grays Harbor, Pacific Conservation Districts

Bobette Parsons District Conservationist Phone: (360) 557-2089
2501 Kresky Ave. NE, Suite D Fax: (855) 857-6404
Chehalis, WA 98532 Email: bobette.parsons@usda.gov

Vancouver Service Center Phone: (360) 768-3056
120 NE 136th Ave., Suite 205 Fax: (855) 857-6404
Vancouver, WA 98684

Clark Conservation District; Underwood Conservation District, Skamania County
(Underwood and Clark Conservation District is not co-located with Vancouver Service Center)

Lisa Schuchman	Resource Conservationist	768-3045	lisa.schuchman@usda.gov
Joshua Himsl	Resource Conservationist	768-3043	joshua.himsl@usda.gov
Rachel Maggi	Area Biologist	768-3048	rachel.maggi@usda.gov

Underwood Conservation District
170 NW Lincoln Street
White Salmon, WA 98672-0096
Phone: (509) 493-1936

Clark Conservation District
813 West Main Street, Suite 106
Battle Ground, WA 98604
Phone: (360) 859-4780

Chehalis Service Center Phone: (360) 748-0083
2501 Kresky Ave. NE, Suite D Fax: (855) 857-6404
Chehalis, WA 98532

Lewis County Conservation District (District is not co-located with Chehalis Service Center)

Bobette Parsons	District Conservationist	557-2089	bobette.parsons@usda.gov
Susan Hoey Lees	Resource Conservationist	557-2093	susan.hoylees@usda.gov
Vacant	Civil Engineering Technician	557-2095	
Derrick Philips	Program Assistant	557-2090	derrick.philips@usda.gov
Elle Brandt	Forester (NWTF)	557-2097	elle.brandt@usda.gov

Lewis County Conservation District
2057 SW Salsbury Ave., Chehalis, WA 98532
Phone: (360) 996-4560

Longview Service Center Phone: (360) 425-1880
2125 8th Avenue Fax: (855) 857-6404
Longview, WA 98632-4053

Cowlitz Conservation District; Wahkiakum Conservation District
(Wahkiakum Conservation District is not co-located with Longview Service Center)

Kari Gordon	Soil Conservationist		kari.gordon@usda.gov
-------------	----------------------	--	----------------------

Wahkiakum Conservation District
957 Steamboat Slough Road, Skamokawa, WA 98647
Phone: (360) 795-8240

Montesano Service Center Phone: (360) 249-5900
330 Pioneer Avenue West Fax: (855) 857-6404
Montesano, WA 98563-4412
Grays Harbor Conservation District

Vacant	Resource Conservationist	Ext. 102	
Benjamin Carroll	Soil Conservation Technician	105	benjamin.carroll@usda.gov

Southwest Team

South Bend Field Office
904 West Robert Bush Drive
P.O. Box 336
South Bend, WA 98586-0968
Pacific Conservation District

Phone: (360) 875-6300
Fax: (855) 857-6404
Pacific CD: (360) 875-9424

Heidi Lumpkin

Resource Conservationist

heidi.lumpkin@usda.gov

Washington State Civil Rights Committee

Toby Rodgers, Chair Veteran SEPM	Phone: (360) 488-4825 Email: toby.rodgers@usda.gov
Misty Seaboldt, Co-Chair Lesbian/Gay/Bi-Sexual/Transgender SEPM	Phone: (509) 343-2270 Email: misty.seaboldt@usda.gov
Lauren Samaniego Federal Women's SEPM	Phone: (509) 725-4501 Ext 115 Email: lauren.samaniego@usda.gov
Richard Edlund Disability SEPM	Phone: (509) 381-6727 Email: richard.edlund@usda.gov
Na Yang Asian American/Pacific Islander SEPM	Phone: (509) 323-2937 Email: na.yang@usda.gov
Hannah Tomlinson American Indian/Alaska Native SEPM	Phone: (509) 422-2750 Ext 111 Email: hannah.tomlinson@usda.gov
Vacant Hispanic SEPM	Phone: Email:
Joshua Hall Black SEPM	Phone: (425) 595-3282 Email: joshua.hall2@usda.gov
Katy Martin East Area Representative	Phone: (509) 685-0858 Ext. 109 Email: katy.martin@usda.gov
Vacant Central Area Representative	Phone: (509) 786-1923 Ext 104 Email:
Susan Hoey Lees West Area Representative	Phone: (360) 557-2093 Email: susan.hoeylees@usda.gov
Nick Vira State Office Representative	Phone: (360) 704-7758 Email: nick.vira@usda.gov
Nathan Gallahan Outreach Advisor	Phone: (509) 323-2911 Email: nathan.gallahan@usda.gov
Roylene Comes At Night Deputy Equal Opportunity Officer	Phone: (509) 323-2900 Email: roylene.comes-at-night@usda.gov

Earth Team Volunteer Coordinators

Kris Mills State Volunteer Coordinator	Phone: (509) 323-2928 Email: Kristoffer.mills@usda.gov
Lisa Field East Area Volunteer Coordinator	Phone: (509) 343-2267 Email: lisa.field@usda.gov
Vacant Central Area Volunteer Coordinator	Phone: (509) 717-3265 Email:
Vacant West Area Volunteer Coordinator	Phone: (360) 704-7781 Email:

West Regional Conservationist Office

Astor Boozer, Regional Conservationist

Brenda Blango, Executive Assistant

(202) 690-2196

(202) 690-2196

Mailing Address

USDA – NRCS

14th & Independence Ave., SW, Room 5204-S

Washington, DC 20250

National Technology Support Centers

West National Technology Support Center

USDA – NRCS

1201 NE Lloyd Blvd, Suite 801

Portland, Oregon 97232

Phone: (503) 273-2400

Fax: (503) 273-2401

Technology Development Teams

Air Quality/Atmospheric Change

BioEnergy

Water Quality/Quantity

Central National Technology Support Center

USDA – NRCS

501 West Felix Street, FWFC, Bldg 23

501 West Felix Street

Fort Worth, Texas 76115

Phone: (817) 509-3337

Fax: (817) 509-3594

Technology Development Teams

Grazing Lands

Wetlands

Wildlife

East National Technology Center

USDA – NRCS

2901 East Gate City Blvd, Suite 2100

Greensboro, North Carolina 27401-4901

Phone: (336) 370-3331

Fax: (336) 273-8132

Technology Development Teams

Manure Management Utilization Team

Social Sciences

Soil Quality

West Regional State Conservationists

ALASKA

Alan McBee

800 East Palmer-Wasilla Highway, Suite 100
Palmer, AK 99645-6539
Phone: (907) 761-7760
Fax: (907) 761-7790

ARIZONA

Keisha Tatem

230 N. First Ave., Ste 509
Phoenix, AZ 85003-1733
Phone: (602) 280-8801
Fax: (855) 844-8319

CALIFORNIA

Carlos Suarez

Richard E. Lyng, USDA Service Center
430 G St., #4164
Davis, CA 95616-4164
Phone: (530) 792-5600
Fax: (530) 792-5790

COLORADO

Clint Evans

Denver Federal Center
Bldg 56, Room 2400
Denver, CO 80225-0426
Phone: (720) 544-2810
Fax: (866) 587-7516

HAWAII

Travis Thomason

Prince Kuhio Fed. Bldg.
300 Ala Moana Boulevard, Room 4-118
P.O. Box 50004
Honolulu, HI 96850-0050
Phone: (808) 600-2911
Fax: (855) 838-6330

IDAHO

Curtis Elke

9173 West Barnes Drive, Suite C
Boise, ID 83709-1574
Phone: (208) 378-5700
Fax: (208) 378-5735

MONTANA

Tom Watson

10 East Babcock St.
Federal Bldg, Room 443
Bozeman, MT 59715-4704
Phone: (406) 587-6811
Fax: (406) 587-6761

NEVADA

Ray Dotson

1365 Corporate Blvd.
Reno, NV 89502-7102
Phone: (775) 857-8500
Fax: (855) 816-0893

NEW MEXICO

J. Xavier Montoya

100 Sun Avenue NE, Suite 602
Albuquerque, NM 87109
Phone: (505) 761-4400
Fax: (855) 538-6003

OREGON

Ron Alvarado

1201 NE Lloyd Blvd., Suite 900
Portland, OR 97232
Phone: (503) 414-3200
Fax: (855) 651-9082

PACIFIC BASIN

FHB Building, Suite 301
400 Route 8
Mongmong, Guam 96910
Phone: (671) 472-7157
Fax: (671) 472-7288

UTAH

Emily Fife

Wallace F. Bennett Federal Building
125 S. State Street, Room 4010
Salt Lake City, UT 84138-1100
Phone: (801) 524-4550
Fax: (844) 715-4928

WASHINGTON

Roylene Comes At Night

11707 E. Sprague Ave., Suite 301
Spokane Valley, WA 99206
Phone: (509) 323-2900
Fax: (855) 847-5492

WYOMING

Astrid Martinez

100 East "B" Street, 3rd Floor
Casper, WY 82602-5011
Phone: (307) 233-6750
Fax: (855) 415-3404

Employee Assistance Program

The Employee Assistance Program (EAP) is offered as a free benefit, and services are confidential with the limits of the law. EAP services include assessments, counseling, and referrals for additional service to employees with personal or work-related concerns, such as stress, financial issues, legal issues, family problems, office conflicts, and alcohol and substance use disorders.

The Federal Occupational Health website www.FOH4YOU.com provides valuable information, educational materials, resources, and self-assessments on key behavioral health topics, including depression, anxiety, relationship issues, alcohol abuse, and health and wellness, to help you live healthy and work well.

24/7 Employee Assistance Program Line: 1-800-222-0364 (TTY: 1-888-262-7848)

Hotline Numbers

**For reporting fraud, waste, mismanagement or violations of law
involving any agency, program or employee of USDA**

United States Department of Agriculture
The Honorable Phyllis K. Fong, Inspector General
1400 Independence Avenue, S.W., Room 117-W, Washington, DC 20250
Main Phone Number: (202) 720-8001
Hotline Number: (800) 424-9121; (202) 690-1622; Hearing Impaired (202) 690-1202
<http://www.usda.gov/oig/hotline.htm>

**For reporting violations of law, rules, or regulations; gross mismanagement; waste of funds;
abuse of authority; substantial and specific danger to public health or safety; prohibited personnel
practices; violations of the Hatch Act: (Independent Agency, outside of USDA)**

Office of Special Council
1730 M Street, N.W., Suite 218, Washington, DC 20036-4505
Main Phone Number: (202) 254-3600 Fax Number: (202) 653-5151
<http://www.osc.gov>

Whistleblower	(800) 572-2249 or (202) 254-3640
Prohibited Personnel Practices	(800) 872-9855 or (202) 254-3670
Alternative Dispute Resolution	(800) 872-9855 or (202) 254-3600

HATCH Act	(800) 854-2824 or (202) 254-3650
-----------	----------------------------------

Requests for HATCH Act advisory opinions (only) may be made by e-mail to hatchact@osc.gov

For callers with hearing/speech disabilities: All of the OSC telephone numbers listed above may be accessed via TTY by first dialing the Federal Relay Service (FRS) at 1-800-877-8339.

Name	Title	Phone	Page
Acord, Celeste	Resource Conservationist	(509) 422-2750 Ext 109	16
Anderson, Rebecca	Resource Conservationist	(360) 704-7741	21
Anderson, Wendy	Program Assistant	(509) 422-2750 Ext 105	16
Barber, Glenn	Civil Engineering Technician	(509) 566-2046	13
Bates, Noah	Area Resource Conservationist	(360) 704-7790	19
Becnel, Brandt	Easement Program Specialist (East)	(509) 323-2940	6
Bighorn, Channon	Soil Conservation Technician	(509) 773-5822 Ext. 106	18
Bomberger, Konrad	Area Resource Conservationist	(509) 367-8583	15, 18
Brandt, Elle	Forester (National Turkey Federation)	(360) 557-2097	23
Briggs, Crystal	Soil Scientist	(360) 488-4830	19
Buckingham, Robin	Resource Conservationist	(360) 704-7741	20
Burken, Bobby	Business Tools Coordinator	(509) 323-2976	6
Cannon, Catherine	Tribal District Conservationist	(509) 422-2750 Ext. 108	15
Carp, Elizabeth	Soil Scientist	(360) 704-7712	19
Carroll, Benjamin	Soil Conservation Technician	(360) 249-5900 Ext 105	23
Castellanos, Andres	Forester	(509) 404-3084	13
Chaney, Marty	Area Agronomist	(360) 704-7751	19
Choker, Eric	Soil Conservationist	(509) 659-1761	11
Clark, Chris	Area Civil Engineer	(360) 704-7783	19
Coleson, Jenifer	Environmental Specialist	(509) 323-2964	7
Comes At Night, Roylene	State Conservationist	(509) 323-2900	6, 25
Cook, Scott	Easement Program Specialist (West)	(360) 704-7750	6, 19
Cosner, Juniper	Rangeland Management Specialist	(509) 773-5822 Ext 107	18
Curtin, Frank	Resource Conservationist	(360) 813-9709	21
Dahlke, Erik	Soil Survey Office Leader	(360) 704-7755	19
Daily, Tracy	Area Program Specialist	(509) 717-3268	15
Davis, Brandon	Soil Conservationist	(509) 725-4501 Ext 122	11
Davis, Kevin	State Agronomist	(509) 367-8595	7, 18
Dhaenens, Annie	Administrative Assistant	(509) 323-2913	6
Diamond, Wendy	Administrative Assistant (Contractor)	(509) 323-2938	6
Dickerson, Kathleen	Administrative Program Specialist (BSS)	(509) 323-2933	6
Dirusso, Joyal	Program Support Assistant	(360) 488-4328	20
Durheim, Wes	Civil Engineering Technician	(509) 323-2959	
Dyer, Joseph	State Resource Soil Scientist	(509) 323-2974	7
Edenbo, Carolyn	Resource Conservationist	(509) 416-5718	13
Edlund, Richard	District Conservationist	(509) 381-6727	12, 25
Elliott, Carlee	Easement Program Coordinator	(509) 323-2920	6
Erickson, Dick	Resource Conservationist	(509) 725-4501 Ext 113	11
Evans, Bobby	State Resource Conservationist	(509) 323-2961	7
Farley, Jim	Civil Engineering Technician	(360) 704-7754	21
Fedenko, Jennifer	Soil Scientist	(509) 416-5710	9
Field, Lisa	Area Administrative Assistant	(509) 343-2267	9, 25
Fifer, Erica	Area Engineer	(360) 488-4822	19, 20
Fleenor, Richard	Rangeland Management Specialist	(509) 323-2965	7
Franzen, Sam	Soil Conservationist	(509) 397-4301 Ext 115	12
Fuller, Carl	Soil Scientist	(360) 488-4845	19
Gaines, Carri	Forester	(509) 323-2956	7
Gallahan, Nathan	State Public Affairs Specialist	(509) 323-2911	6, 25
Gardner, Lexi	Resource Conservationist	(509) 745-3007	16
Garnett, Reuben	Soil Conservationist	(509) 925-8585 Ext 114	17

Name	Title	Phone	Page
Gasperi, Joe	Geologist	(509) 323-2951	7
Gordon, Kari	Soil Conservationist	(360) 425-1880	23
Greer, Cory	Area Civil Engineer	(509) 343-2269	9
Griswold, Keith	Assistant State Conservationist	(509) 323-2971	6
Gutierrez, Erin	Soil Conservationist	(360) 704-7742	21
Hall, Alexander	Resource Conservationist	(360) 592-6095	20
Hall, Joshua	Resource Conservationist	(425) 595-3282	20, 25
Hamman, Jared	RCCP Coordinator	(360) 488-4821	19, 20
Hanger, Tracy	District Conservationist	(509) 956-3752	14
Hanson, Don	Design Engineer	(509) 323-2949	7
Hawley, Joy	Soil Conservationist	(360) 592-6100	20
Heisey, Steven	RCCP Coordinator	(509) 343-2273	9
Hendershot, Amy	District Conservationist	(253) 664-9303	21
Hennings, Heidi	Biologist (Pheasants Forever)	(509) 659-1761 Ext 115	11
Himsl, Joshua	Resource Conservationist	(360) 768-3043	23
Hoey Lees, Susan	Resource Conservationist	(360) 557-2093	23, 25
Hoff, Ryan	Rangeland Management Specialist	(509) 422-2750 Ext 104	16
Hoxie, Aubrey	Area Conservationist	(509) 343-2272	9
Janowicz, Stan	District Conservationist	(509) 685-0858 Ext. 115	10
Johnson, Larry	State Conservation Engineer	(509) 323-2955	7
Johnson, Stephen	Resource Conservationist	(509) 397-4301 Ext 111	12
Jones, Kaiza	Soil Conservation Technician	(509) 422-2750 Ext. 124	16
Kearsley, Marika	Resource Conservationist	(509) 659-1761 Ext 109	11
Keith, Elizabeth	Resource Conservationist	(509) 367-8554	18
Khuat, Lynn	Resource Conservationist	(425) 277-5580	22
Knehans, Lynelle	RCCP Civil Engineer	(509) 323-2954	7
Kreutz, Erin	Ecologist	(360) 488-4844	19
Krueger, Bryce	Resource Conservationist	(509) 956-3754	14
Kuhlmann, Jeff	Area Resource Conservationist	(509) 397-4301 Ext 118	9, 12
Kunkel, Alex	Biologist (Pheasants Forever)	(509) 745-3010	16
Lange, Joe	Design Engineer	(509) 415-3687	7, 16
Larsen, John	Soil Conservationist	(425) 277-5580	22
Lee, Eun	Administrative Assistant	(360) 704-7781	19
Lee, Steven	PMC Manager	(509) 330-5641	7
Lloyd, Troy	Soil Conservation Technician	(509) 685-0858 Ext 116	10
Lumpkin, Heidi	Resource Conservationist	(360) 875-6300	24
Maggi, Rachel	Area Biologist	(360) 768-3048	19, 23
Majer, Paul	Area Engineer	(509) 717-3259	15
Martin, Katy	Program Assistant	(509) 956-3765	14, 25
McBride, Peter	State Wildlife Biologist	(509) 323-2975	7
McDonagh, Sean	Resource Conservationist	(360) 813-9707	21
McGinnis, Baylee	Geologist	(509) 323-2950	7
Melendez, Adrian	Media Specialist III	(509) 323-2952	6
Mills, Kristoffer	Outreach Coordinator	(509) 323-2928	6
Mires, Michelle	Soil Conservation Technician	(509) 745-3006	16
Morris, Sandra	Resource Conservationist	(509) 685-0858 Ext 109	10
Navarro, Joe	Soil Conservation Technician	(509) 416-5711	13
Noel, Heather	Wetland/Easement Specialist	(509) 323-2973	6
Norton, Levi	Soil Conservationist	(509) 717-3253	17

Name	Title	Phone	Page
Parades, Sergio	Resource Conservationist	(509) 773-5822 Ext 110	18
Pattee, Scott	Hydrologic Technician	(360) 488-4826	7, 20
Parsons, Bobette	District Conservationist	((360) 557-2089	23
Paulson, Jeffrey	Forester	(509) 422-2750 Ex 103	16
Paup-Lefferts, Kelley	MLRA Soil Survey Office Leader	(509) 416-5706	9
Phillips, Derrick	Program Assistant	(360)447-2090	23
Phillips, Amanda	Soil Conservationist	(509) 745-3013	16
Pickron, Emily	Area Program Specialist	(509) 343-2268	9
Pierce, Melissa	Resource Conservationist	(509) 786-1923 Ext 111	18
Rankin, Marty	Civil Engineering Technician	(360) 488-4823	20
Reardon, Kyle	Soil Conservationist	(509) 717-3262	17
Reseland, Angela	Farm Bill Coordinator (WDFW)	(503) 298-7085	7
Reyes, Alexandra	Resource Conservationist	(509) 775-3473 Ext 102	10
Riley, Julia	Watershed Resource Planning Specialist	(509) 323-2941	7
Riser, Samuel	Financial Resource Specialist	(509) 323-2986	6
Rodgers, Toby	NRI Coordinator	(360) 488-4825	7, 20, 25
Rodriguez, Martin	Civil Engineer Technician	(509) 367-8593	18
Roepke, Cari	District Conservationist	(509) 725-4501	11
Rose, David	Area Conservationist	(360) 704-7782	19
Ross, Max	Soil Scientist	(360) 488-4828	19
Ruchert, Mitch	Resource Conservationist	(509) 552-8096	13
Samaniego, Lauren	Soil Conservationist	(509) 725-4501 Ext 115	11, 25
Seiboldt, Misty	Area Program Liaison	(509) 343-2270	9, 25
Sego, Russ	Business Services Specialist	(509) 323-2973	6
Seigerman, Christina	Program Support Specialist	(509) 381-6726	12
Schuchman, Lisa	Resource Conservationist	(360) 768-3045	23
Scripter, Chas	Assistant State Conservationist	(509) 323-2984	6
Scroggie, Scott	Soil Conservationist	(509) 745-3008	16, 17
Shero, Austin	Area Conservationist	(509) 717-3257	15
Simpson, Mark	Resource Conservationist	(509) 447-4217 Ext 100	10
Slate, Robin	State Tribal Liaison	(253) 256-6743	6, 21
Smith, Grant	Cultural Resources Specialist	(509) 343-2271	9
Smith, Kathryn	Forester	(360) 488-4820	20
Sormun, Georgia	Secretary	(509) 323-2992	6, 25
Spellman, Dallas	Farmer	(509) 330-5638	7
Sprague, Dillion	Civil Engineer	(360) 488-4829	20
Sprecher, Steve	Soil Conservationist	(509) 381-6724	12
Stauty, Rick	Soil Conservationist	(509) 566-2046	13
Stoflet, Cameron	NRCS Liaison	(509) 685-0858 Ext 110	10
Tanuvasa, Sarah	District Conservationist	(360) 488-4819	20
Taylor, Holly	Resource Conservationist	(509) 925-8585 Ext 115	17
Tobias, Oscar	Civil Engineer Technician	(509) 367-8597	18
Toerner, Cameron	Soil Conservationist	(509) 956-3766	14
Tomlinson, Hannah	Soil Conservationist	(509) 422-2750 Ext. 111	15, 25
Trevithick, Joyce	Area Program Liaison	(509) 717-3260	6, 15
Troutman, Sarah	District Conservationist	(509) 422-2750 Ext. 119	16
Verdusco, Tiffany	Administrative Assistant	(509) 323-2919	6
Vira, Nick	State Partnership Liaison	(360) 704-7758	6, 19, 25
Walker, Tiffani	Soil Conservationist	(509) 381-6728	12
Wanner, Kathleen	Easement Program Specialist (State)	(509) 323-2930	6
Warren, Nicole	Biologist (Pheasants Forever)	(360) 704-7726	19

Wayment, Jessica	Agronomist	(509) 330-5639	7
Weber, Dave	Soil Conservation Technician	(509) 397-4301 Ext. 119	12
Williams, Angela	Rangeland Management Specialist	(509) 552-8116	13
Williams, Laura	RCCP Coordinator	(509) 323-2988	6
Wisher, Kaley Ann	Biologist (Pheasants Forever)	(509) 717-3264	15
Wren, Casey	Soil Conservation Technician	(509) 725-4501 Ext 112	11
Wright, Chris	District Conservationist	(509) 367-8553	18
Yang, Na	Administrative Program Specialist (FRS)	(509) 323-2937	6, 25
Young, Bay	Soil Conservationist	(360) 488-4848	20

NRCS/WA Site and Office ID

Office Title	Site ID	Office ID	City	Area	Team	Directory Page #
NRCS WA State Office	10110	100237	Spokane Valley	State		6
Plant Materials Center	9777	100223	Pullman	State		7
East Area						
East Area Office	10110	107004	Spokane Valley	East Area		9
Pasco MLRA Soil Survey Office	9101	107644	Pasco	Soil		9
Colville Service Center	10107	66628	Colville	East Area	Northeast Team	10
Stevens County Conservation Dist.	1851	100203	Colville	East Area	Northeast Team	10
Newport Service Center	3452	66613	Newport	East Area	Northeast Team	10
Pend Oreille Conservation Dist.	3452	100214	Newport	East Area	Northeast Team	10
Republic Service Center	1888	66582	Republic	East Area	Northeast Team	10
Ferry Conservation Dist.	1888	100230	Republic	East Area	Northeast Team	10
Davenport Service Center	1860	66608	Davenport	East Area	West Palouse Team	11
Lincoln County Conservation Dist.	1860	100206	Davenport	East Area	West Palouse Team	11
Ritzville Service Center	1969	66561	Ritzville	East Area	West Palouse Team	11
Adams Conservation Dist.	6702	104846	Ritzville	East Area	West Palouse Team	11
Colfax Service Center	1892	66638	Colfax	East Area	Palouse Team	12
Whitman Conservation Dist.	9640	100201	Colfax	East Area	Palouse Team	12
Pine Creek Conservation Dist.	9641	106353	Oakesdale	East Area	Palouse Team	12
Palouse Conservation Dist.	6714	104866	Pullman	East Area	Palouse Team	12
Spokane Service Center	8201	66625	Spokane Valley	East Area	Palouse Team	12
Spokane County Conservation Dist.	6583	104513	Spokane Valley	East Area	Palouse Team	12
St. John Field Office	5141	100239	St John	East Area	Palouse Team	12
Rock Lake Conservation Dist.	5141	100240	St John	East Area	Palouse Team	12
Clarkston Service Center	6277	66563	Clarkston	East Area	Snake River Team	13
Asotin County Conservation Dist.	6277	100200	Clarkston	East Area	Snake River Team	13
Dayton Service Center	9763	66576	Dayton	East Area	Snake River Team	13
Columbia Conservation Dist.	9763	100207	Dayton	East Area	Snake River Team	13
Pasco Service Center	9101	66585	Pasco	East Area	Snake River Team	13
Franklin Conservation Dist.	9101	100219	Pasco	East Area	Snake River Team	13
Pomeroy Service Center	1855	66587	Pomeroy	East Area	Snake River Team	13
Pomeroy Conservation Dist.	9591	100220	Pomeroy	East Area	Snake River Team	13
Walla Walla Service Center	8977	66633	Walla Walla	East Area	Snake River Team	14
Walla Walla County Conservation Dist.	8977	100246	Walla Walla	East Area	Snake River Team	14
Central Area						
Central Area Office	1858	107003	Ephrata	Central Area		15
Colville Tribal Office	9838	104510	Nespelem	Central Area		15
Yakama Tribal Office	6580	104509	Toppenish	Central Area		15
Okanogan Service Center	1839	66611	Okanogan	Central Area	North Central Team	16
Okanogan Conservation Dist.	1839	100215	Okanogan	Central Area	North Central Team	16
Waterville Service Center	1951	66580	Waterville	Central Area	North Central Team	16
Foster Creek Conservation Dist.	9587	100247	Waterville	Central Area	North Central Team	16
South Douglas Conservation Dist.	9588	106355	Waterville	Central Area	North Central Team	16
Wenatchee Service Center	8974	66568	Wenatchee	Central Area	North Central Team	16
Cascadia Conservation Dist.	9577	109880	Wenatchee	Central Area	North Central Team	16
Ellensburg Service Center	9609	66600	Ellensburg	Central Area	Big Bend Team	17
Kittitas County Conservation Dist.	9609	100209	Ellensburg	Central Area	Big Bend Team	17
Ephrata Service Center	1858	66590	Ephrata	Central Area	Big Bend Team	17
Grant Conservation Dist.	9580	109882	Moses Lake	Central Area	Big Bend Team	17
Goldendale Service Center	1866	66603	Goldendale	Central Area	South Central Team	18
Central Klickitat Conservation Dist.	1866	100211	Goldendale	Central Area	South Central Team	18
Eastern Klickitat Conservation Dist.	1866	106354	Goldendale	Central Area	South Central Team	18
Prosser Service Center	8273	66565	Prosser	Central Area	South Central Team	18
Benton Conservation Dist.	9586	107034	Kennewick	Central Area	South Central Team	18
Yakima Service Center	1903	66641	Yakima	Central Area	South Central Team	18
North Yakima Conservation Dist.	1903	100244	Yakima	Central Area	South Central Team	18
South Yakima Conservation Dist.	3449	100245	Zillah	Central Area	South Central Team	18

NRCS/WA Site and Office ID

Office Title	Site ID	Office ID	City	Area	Team	Directory Page #
West Area Office	6600	107002	Olympia	West Area		19
Mount Vernon Soil Survey Office	9791	106330	Mount Vernon	West Area		19
Olympia Soil Survey Office	6600	109921	Olympia	West Area		19
Lake Stevens Service Center	1847	66622	Lake Stevens	West Area	Northwest Team	20
Snohomish Conservation Dist.	1847	100210	Lake Stevens	West Area	Northwest Team	20
Everson Service Center	9790	66636	Everson	West Area	Northwest Team	20
Whatcom Conservation Dist.	1891	101457	Lynden	West Area	Northwest Team	20
Mount Vernon Service Center	9791	66619	Mount Vernon	West Area	Northwest Team	20
Skagit Conservation Dist.	1837	100213	Mount Vernon	West Area	Northwest Team	20
San Juan Islands Conservation Dist.	15438	104870	Friday Harbor	West Area	Northwest Team	20
Whidbey Island Conservation Dist.	6719	104875	Coupeville	West Area	Northwest Team	20
Port Angeles Service Center	8272	66571	Port Angeles	West Area	Northwest Team	20
Jefferson County Conservation Dist.	6713	104865	Port Hadlock	West Area	Northwest Team	20
Clallam County Conservation Dist.	8272	101458	Port Angeles	West Area	Northwest Team	20
Olympia Service Center	6600	66631	Olympia	West Area	Puget Sound Team	21
Thurston Conservation Dist.	9592	104872	Tumwater	West Area	Puget Sound Team	21
Bremerton Service Center	9801	110106	Bremerton	West Area	Puget Sound Team	21
Kitsap Conservation Dist.	9589	100221	Poulsbo	West Area	Puget Sound Team	21
Mason Conservation Dist.	5137	100232	Shelton	West Area	Puget Sound Team	21
Puyallup Service Center	9506	66616	Puyallup	West Area	Puget Sound Team	21
Pierce Conservation Dist.	8633	100228	Puyallup	West Area	Puget Sound Team	21
Renton Service Center	9021	66595	Renton	West Area	Puget Sound Team	22
King Conservation Dist.	9022	100229	Renton	West Area	Puget Sound Team	22
Vancouver Service Center	11970	66574	Vancouver	West Area	Southwest Team	23
Clark Conservation Center	10787	100196	Brush Prairie	West Area	Southwest Team	23
Underwood Conservation Dist.	3635	100212	White Salmon	West Area	Southwest Team	23
Skamania County Conservation Dist.	N/A	N/A	Vancouver	West Area	Southwest Team	23
Chehalis Service Center	10856	66606	Chehalis	West Area	Southwest Team	23
Lewis County Conservation Dist.	12448	100197	Chehalis	West Area	Southwest Team	23
Longview Service Center	1948	66578	Longview	West Area	Southwest Team	23
Cowlitz Conservation Dist.	1948	101232	Longview	West Area	Southwest Team	23
Wahkiakum Conservation Dist.	6720	104877	Skamokawa	West Area	Southwest Team	23
Montesano Service Center	1869	66593	Montesano	West Area	Southwest Team	23
Grays Harbor Conservation Dist.	1869	100195	Montesano	West Area	Southwest Team	23
South Bend Office	9573	100233	South Bend	West Area	Southwest Team	24
Pacific Conservation Dist.	9573	100234	South Bend	West Area	Southwest Team	24