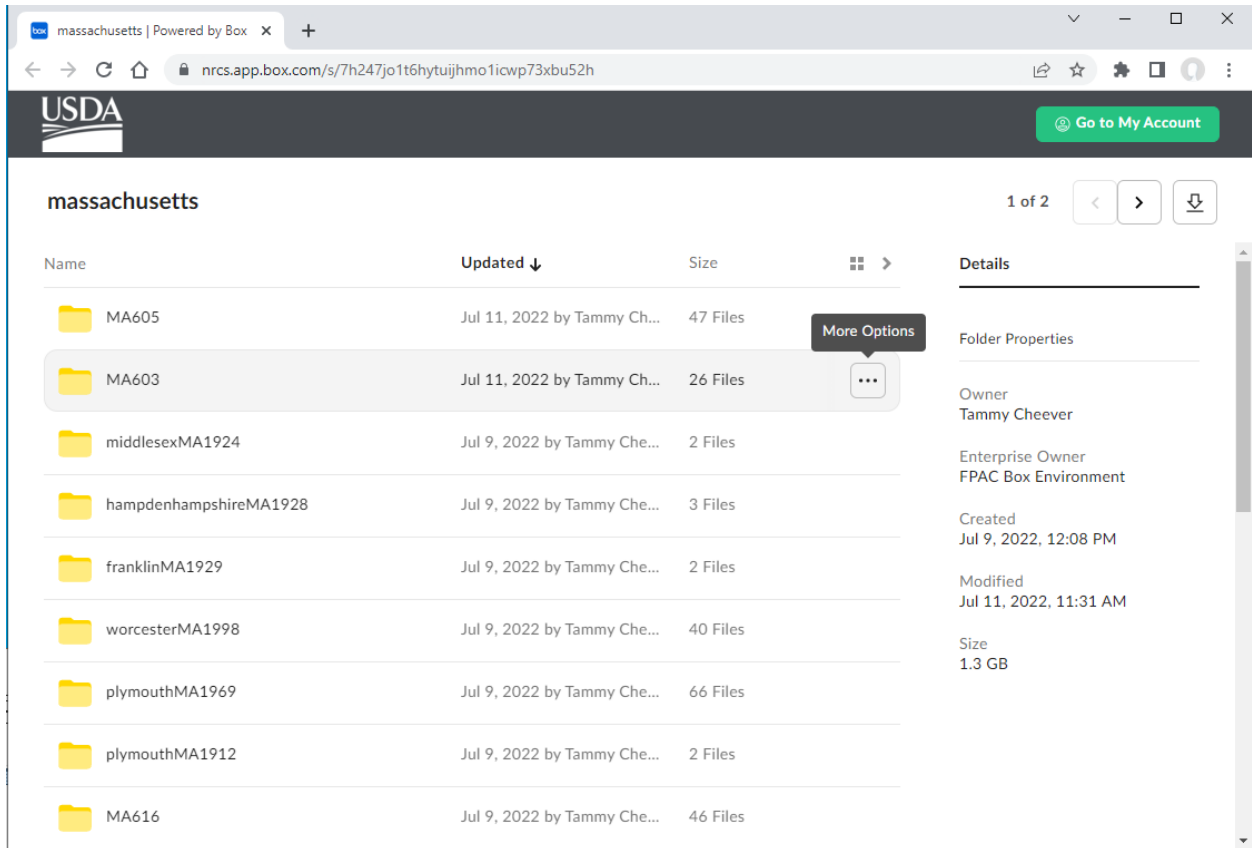


## How to Download an Archived Historical Soil Survey Report

To download an entire archived soil survey, use Firefox, Edge, or Chrome. Click the link to folder for the desired State. The following example uses Massachusetts.

Click the link for Massachusetts (<https://nracs.box.com/s/7h247jo1t6hytuijhmo1icwp73xbu52h>), which returns the following page. Hovering over the folder for the desired survey reveals the **More Options** button, which is labeled with three dots (...) as shown below.



The screenshot shows a web browser window displaying a Box.com folder named 'massachusetts'. The browser address bar shows the URL: [nracs.app.box.com/s/7h247jo1t6hytuijhmo1icwp73xbu52h](https://nracs.app.box.com/s/7h247jo1t6hytuijhmo1icwp73xbu52h). The page header includes the USDA logo and a 'Go to My Account' button. The main content area shows a list of folders with columns for Name, Updated, and Size. A 'More Options' menu is open over the 'MA603' folder, showing three dots (...). The right sidebar displays details for the selected folder, including Folder Properties, Owner (Tammy Cheever), Enterprise Owner (FPAC Box Environment), Created date (Jul 9, 2022, 12:08 PM), Modified date (Jul 11, 2022, 11:31 AM), and Size (1.3 GB).

Name	Updated ↓	Size	More Options
MA605	Jul 11, 2022 by Tammy Ch...	47 Files	More Options
MA603	Jul 11, 2022 by Tammy Ch...	26 Files	...
middlesexMA1924	Jul 9, 2022 by Tammy Che...	2 Files	
hampdenhamshireMA1928	Jul 9, 2022 by Tammy Che...	3 Files	
franklinMA1929	Jul 9, 2022 by Tammy Che...	2 Files	
worcesterMA1998	Jul 9, 2022 by Tammy Che...	40 Files	
plymouthMA1969	Jul 9, 2022 by Tammy Che...	66 Files	
plymouthMA1912	Jul 9, 2022 by Tammy Che...	2 Files	
MA616	Jul 9, 2022 by Tammy Che...	46 Files	

1 of 2

Details

Folder Properties

Owner  
Tammy Cheever

Enterprise Owner  
FPAC Box Environment

Created  
Jul 9, 2022, 12:08 PM

Modified  
Jul 11, 2022, 11:31 AM

Size  
1.3 GB

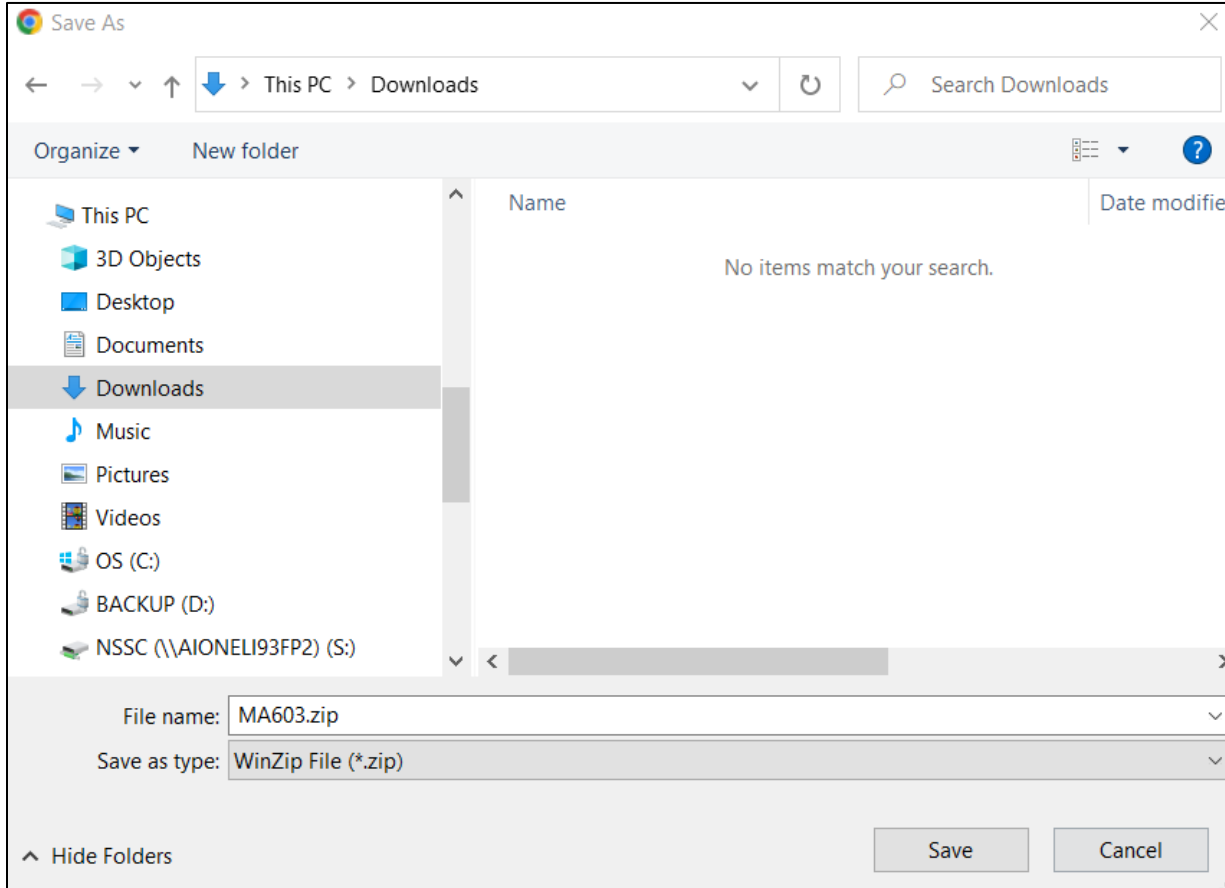
Click the “...” button, which is to the right of MA603. This displays the **Download** button as shown below.

The screenshot shows a web browser window with the URL `nracs.app.box.com/s/7h247jo1t6hytuijhm01icwp73xbu52h`. The page title is "massachusetts | Powered by Box". The USDA logo is visible in the top left. The main content area shows a folder list for "massachusetts" with columns for Name, Updated, and Size. The folder "MA603" is selected, and a context menu is open over it, showing a "Download" button. The right sidebar shows details for the selected folder, including "Folder Properties", "Owner: Tammy Cheever", and "Enterprise Owner: FPAC Box Environn".

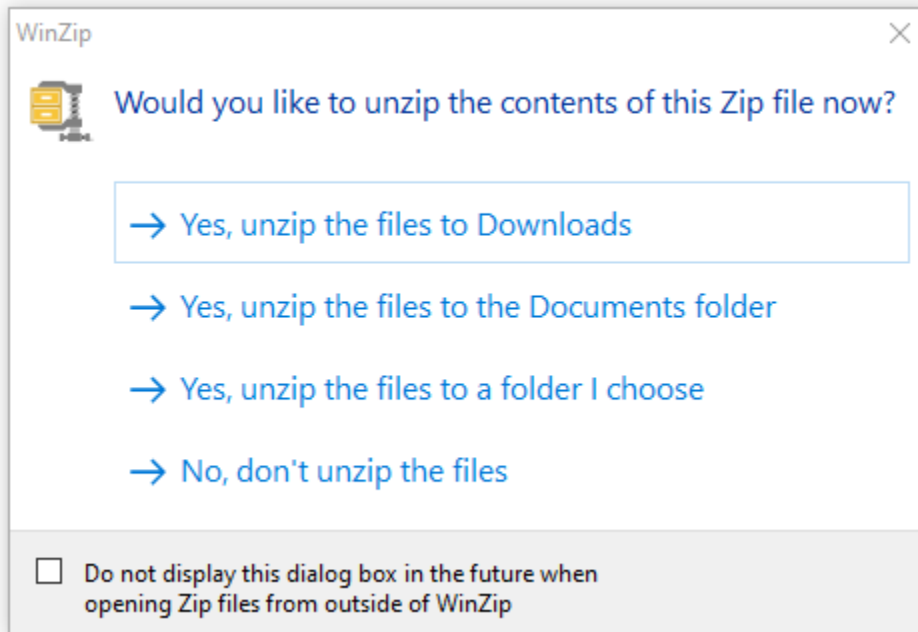
Name	Updated ↓	Size		Details
MA605	Jul 11, 2022 by Tammy Ch...	47 Files		Folder Properties
MA603	Jul 11, 2022 by Tammy Ch...	26 Files	...	Owner Tammy Cheever
middlesexMA1924	Jul 9, 2022 by Tammy Che...		Download	Enterprise Owner FPAC Box Environn
...	...	...		

Click **Download**. The download will be a zip file. You do not need to login to download the file.

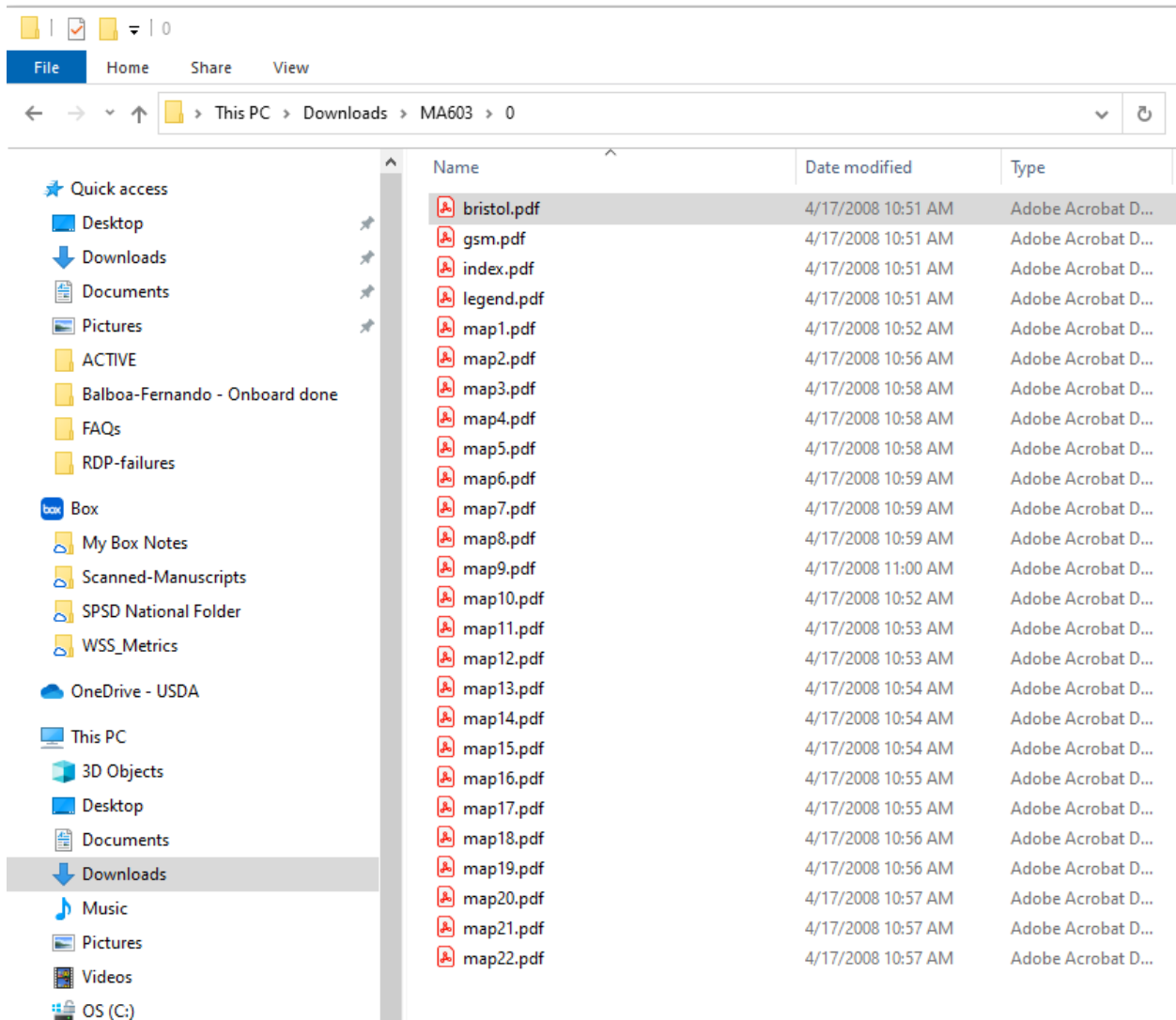
Depending on your browser, you may be asked if you want to open or save the file. Choose “Save” or “Save as.” In this example, the file is named MA603.zip. Note the location to which the file is downloading. In this example, the file is downloading to “Downloads.”



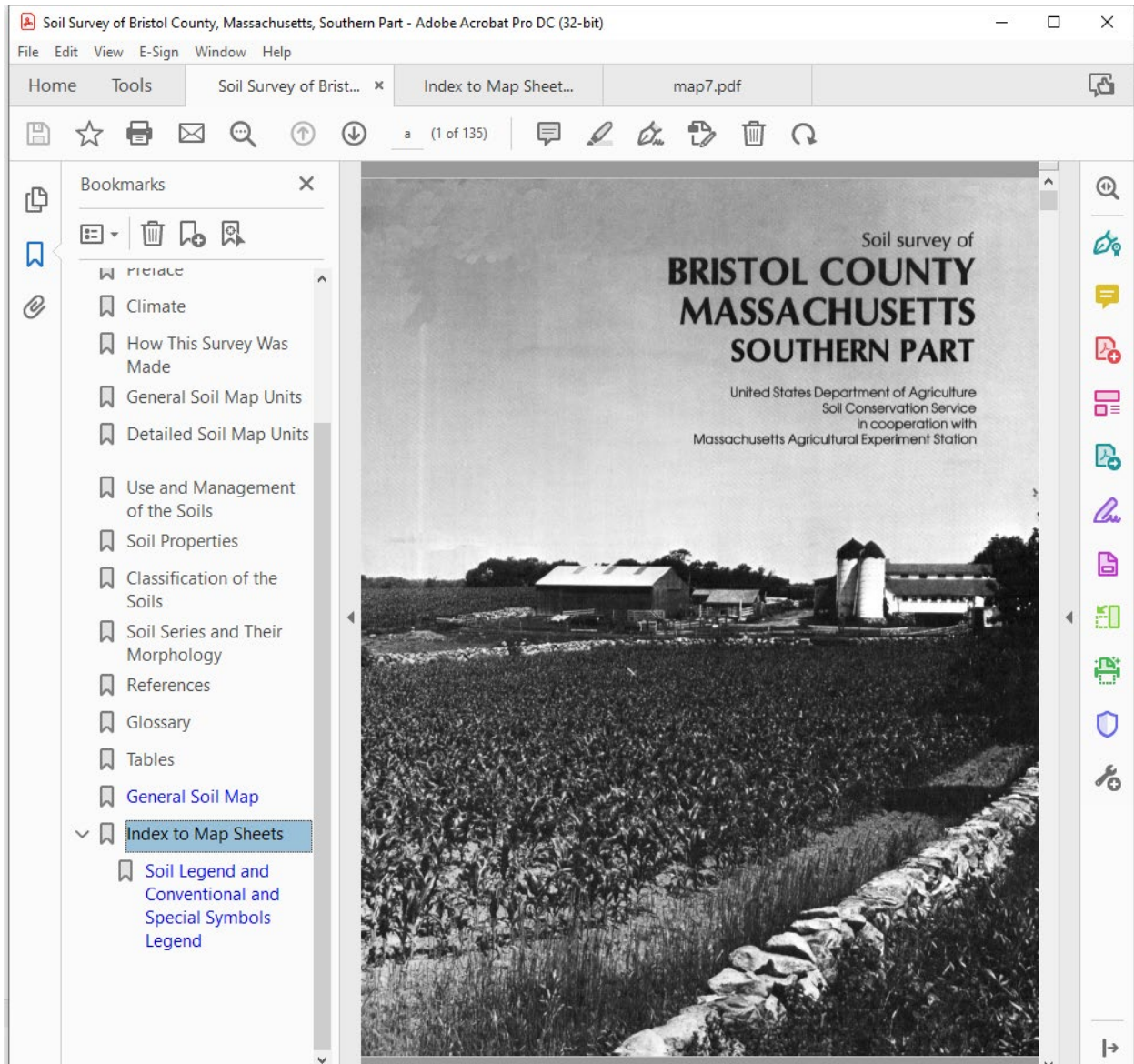
After the download completes, find the file on your local computer and double-click to open. Choose one of the options shown below to unzip the file. By default, the file unzips to a subfolder with the same name as the file (MA603) in the location specified during the download.



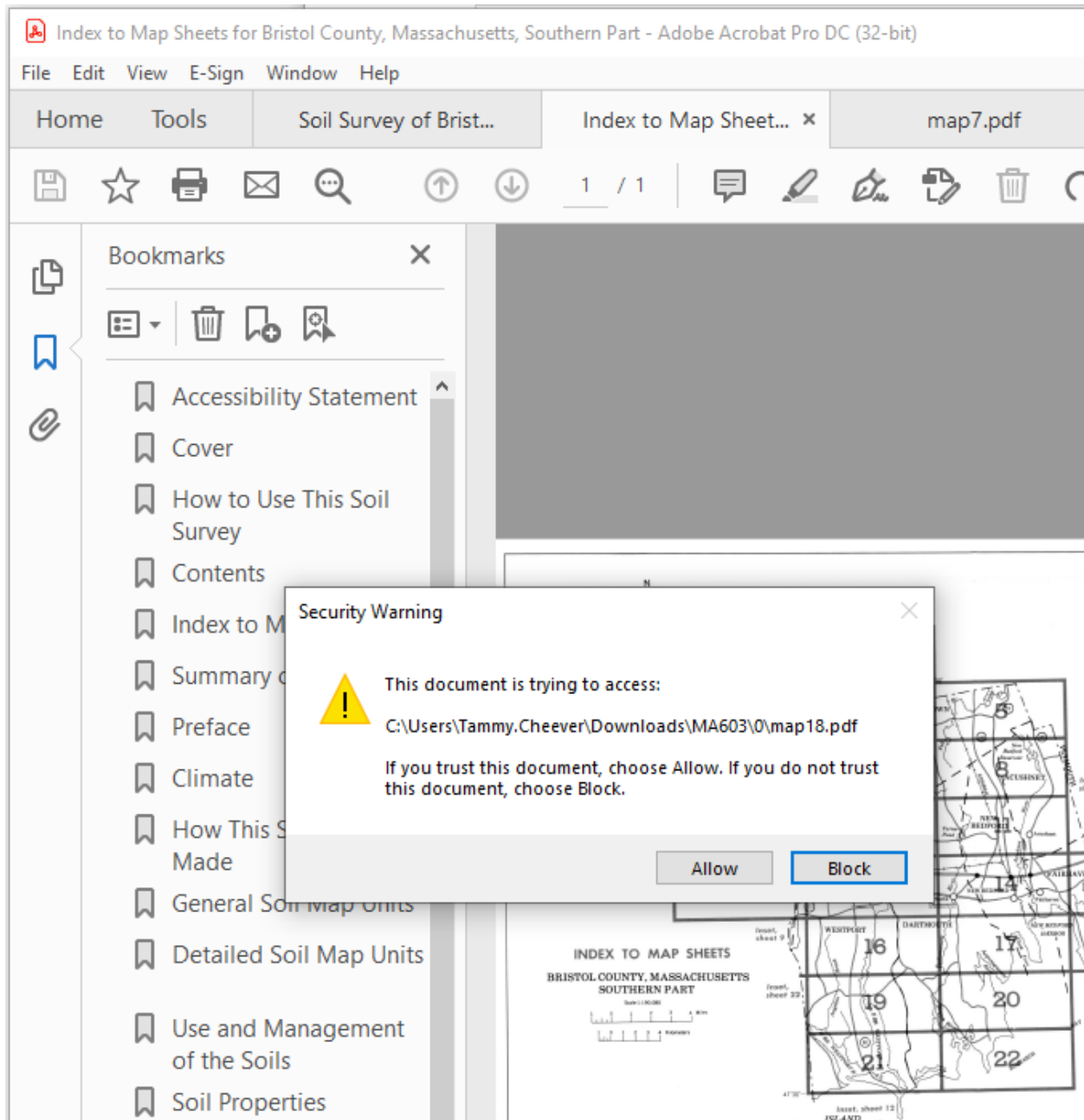
Open File Explorer, navigate to the new (MA603) folder, and find the pdf file for the text. The text file is typically named for the county. In this example, the text file is bristol.pdf as shown below.



Double-clicking the file opens the soil survey report. You may click on any of the bookmarks.



Clicking on the bookmarks may result in a Security Warning as shown below. Click **Allow** to open the bookmarked file.



In the screenshot below, tabs are open for the text, the index to map sheets, map sheet 7, and map sheet 8. The index to map sheets was opened by the bookmark. The map sheets were opened by clicking in the index to map sheets.

