

2137 North Central NM Watershed Restoration



2137 North Central NM Watershed Restoration Project

Claunch-Pinto Soil and Water Conservation District (SWCD) and their partners have identified over 35,000 acres for forest restoration treatments on private, public, state, and tribal lands that are located within both the upland ponderosa pine, pinon, and juniper watersheds, and in the lower elevation riparian ones. Claunch-Pinto SWCD and their partners are committed to successful restoration treatments aimed at improving watershed health and mitigating the extreme risk of wildfire.

There are many expected outcomes that will benefit the environment that will have positive impacts on both the local economics and social programs within the project area. The project partners have a goal to treat 5,000 acres of riparian woodlands and 15,000 acres of upland watershed vegetation within this five-year project which will enhance and restore a multi-jurisdictional regional landscape (through the use of the Environmental Quality Incentives Program). Upland forest watersheds are the primary sources of water in New Mexico, while the riparian woodland corridors protect the streams and rivers that serve as the conduits for water to downstream locations of agricultural and domestic use. These treatments will enhance and restore the upland watershed source areas and the riparian buffers within the western edge of the Pecos River Watershed and along the Rio Grande, including adjacent tributaries and the upper watersheds. By reducing the forest density and structure, as well as the removal of noxious and invasive exotic plant species, this environmental restoration will make areas more resilient to wildfire and drought, thus protecting ecosystem resources and services, including water quality and quantity,

soil resources, vegetative resources, wildlife resources, air quality, and economic resources such as homes, businesses, and ranches. It is expected that this project will recruit new members from economically and socially disadvantaged areas and provide opportunities to build capacity in these areas.



Claunch-Pinto Soil & Water Conservation District

Eligibility: Projects must be located in the Geographic Priority Area. (see attached map)

Start Date: 10/18/22 **End Date:** 12/31/27

Resource Concerns: Degraded Plant Condition, Fire Management, Long Term Protection Land, Soil Quality Limitations, Wind and Water Erosion

Eligible Practices: Forest Stand Improvement (666) Woody Residue Treatment (384) Brush Management (314) Facilitating Practices may be used.

Financial Assistance Available: \$1,781,000

Deadlines: November 18, 2022

Ranking Deadline: March 10, 2023

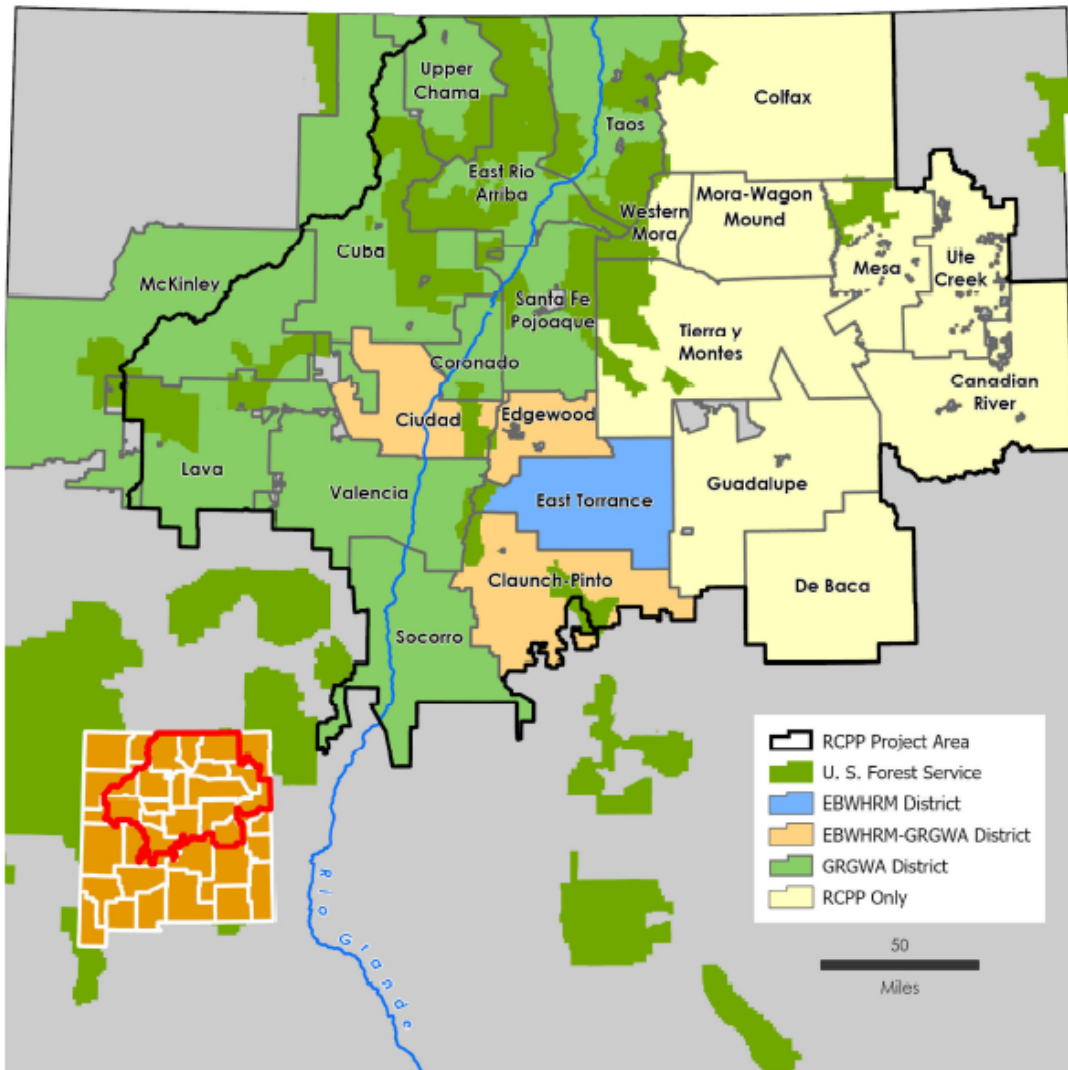
100% Obligations: June 2, 2023

Lead Partner Organization:

Claunch Pinto Soil and Water Conservation District

Other Partners:

Forest Service, McKinley SWCD, NM Highlands University, NM Forest and Watershed Restoration Institute, SWCA Environmental Consultants, Santa Fe Pojoaque SWCD, Coronado SWCD, Taos SWCD, Cuba SWCD, East Torrance SWCD, East Rio Arriba SWCD



*North Central New Mexico Watershed Restoration Project
RCPP Project Area and Participating SWCDs*



New Mexico

Natural
Resources
Conservation
Service

nrcs.usda.gov/



USDA is an equal opportunity provider, employer, and lender. [N.M.-2022] • [Month Year]