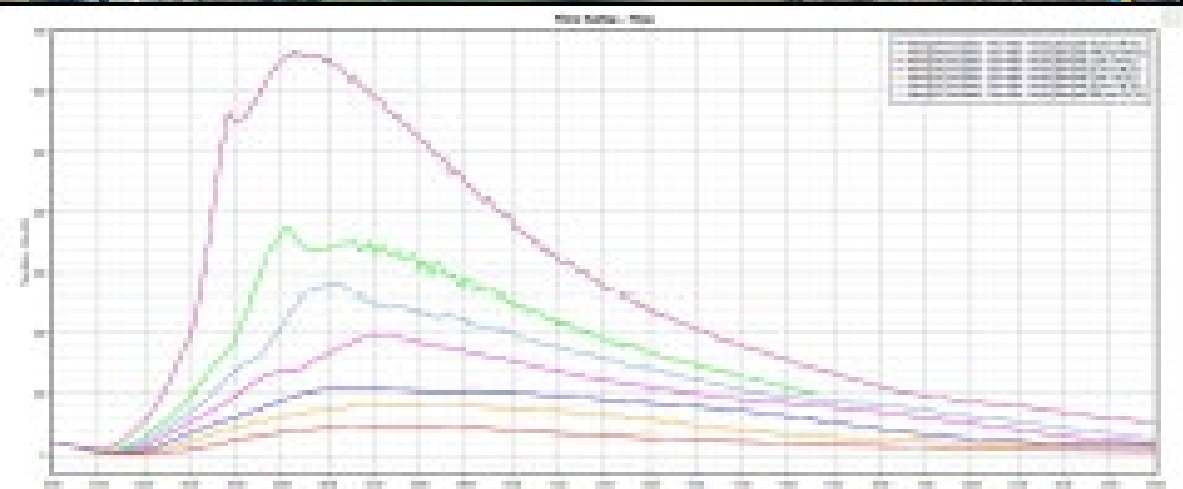
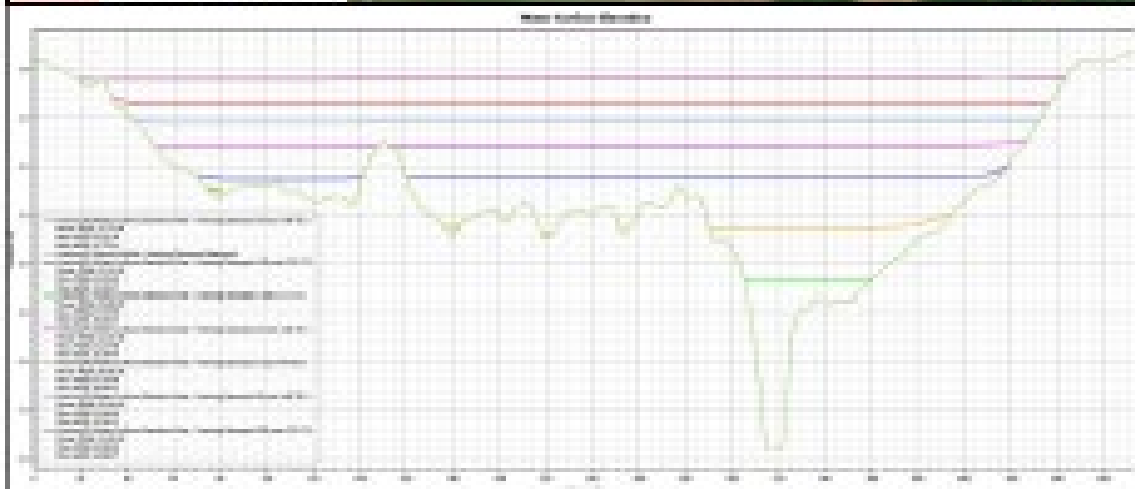
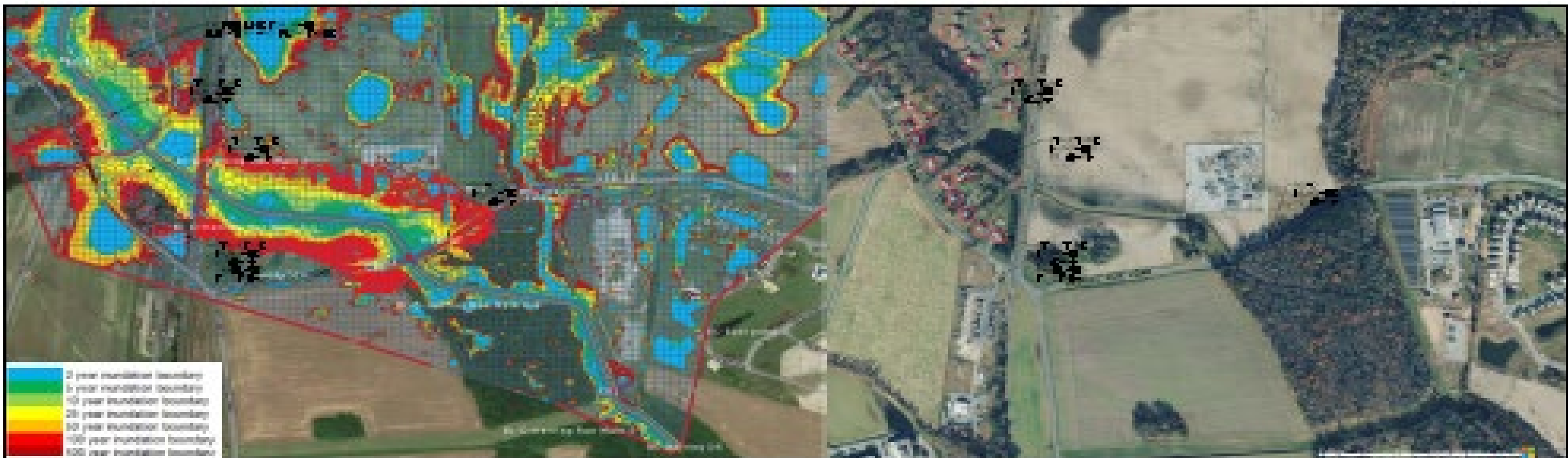


Watershed Program Updates

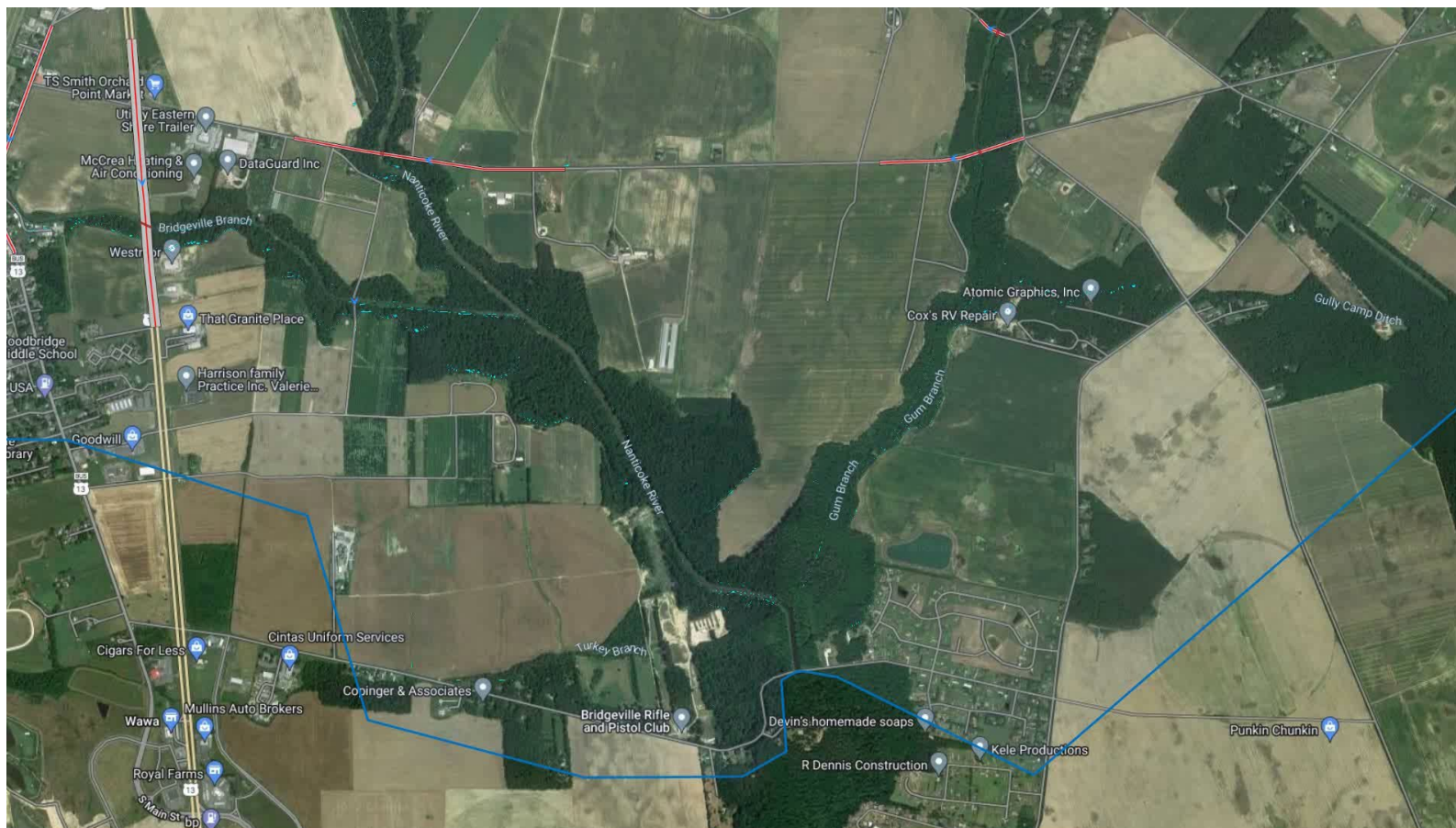
Upper Nanticoke Watershed Plan Update

- **Previously reported**
 - Field data collection and additional field work
 - Interpretation of data
 - Developing hydrologic model
- **Hydrologic Model**
 - Report of methods provided and reviewed by NRCS and DNREC engineers
 - Samples of output from model to verify results and show the format for presenting results





Nanticoke Outlet Qrunoff 2-Year Timelapse



Natural
Resources
Conservation
Service

nrcs.usda.gov/



Watershed Program Updates

Additional Program Updates

- Congress continues to appropriate more funds to program
- Bipartisan Infrastructure Law (BIL) funding – almost \$1 billion
- Inflation Reduction Act (IRA) – funding directed to agency overall and Watershed Program specifically.
- Agency developing Plan of Work
- Increasing staffing at national and regional levels to assist states



Watershed Program Updates

Future Projects in DE

- **Purposes**
 - Flood Prevention
 - Watershed Protection
 - Agricultural Water Management
 - Water Quality Management
 - Public Recreation
 - Public Fish and Wildlife
 - Municipal and Industrial Water Supply
- **20% benefit to ag land or rural communities**
- **Eligible Sponsor**



Watershed Program Updates



Local Sponsor

To be a local sponsor you must be a state agency, a subdivision of the state (which could be a non-profit if it's a part of the state government), a local municipal agency for county/city, or a tribal organization.

Sponsors must have some interest and control in the projects they would be administering and ability to implement operation and maintenance.



Watershed Program Updates

On the Horizon

- **City of New Castle – Sea Level Rise Task Force**
 - Submitted formal request to STC
 - Request for funds for Preliminary Investigation Feasibility Report submitted
- **Kent Conservation District – Aging SWM Facilities**
 - Starting to consider what a project may look like
 - Data collection by District

