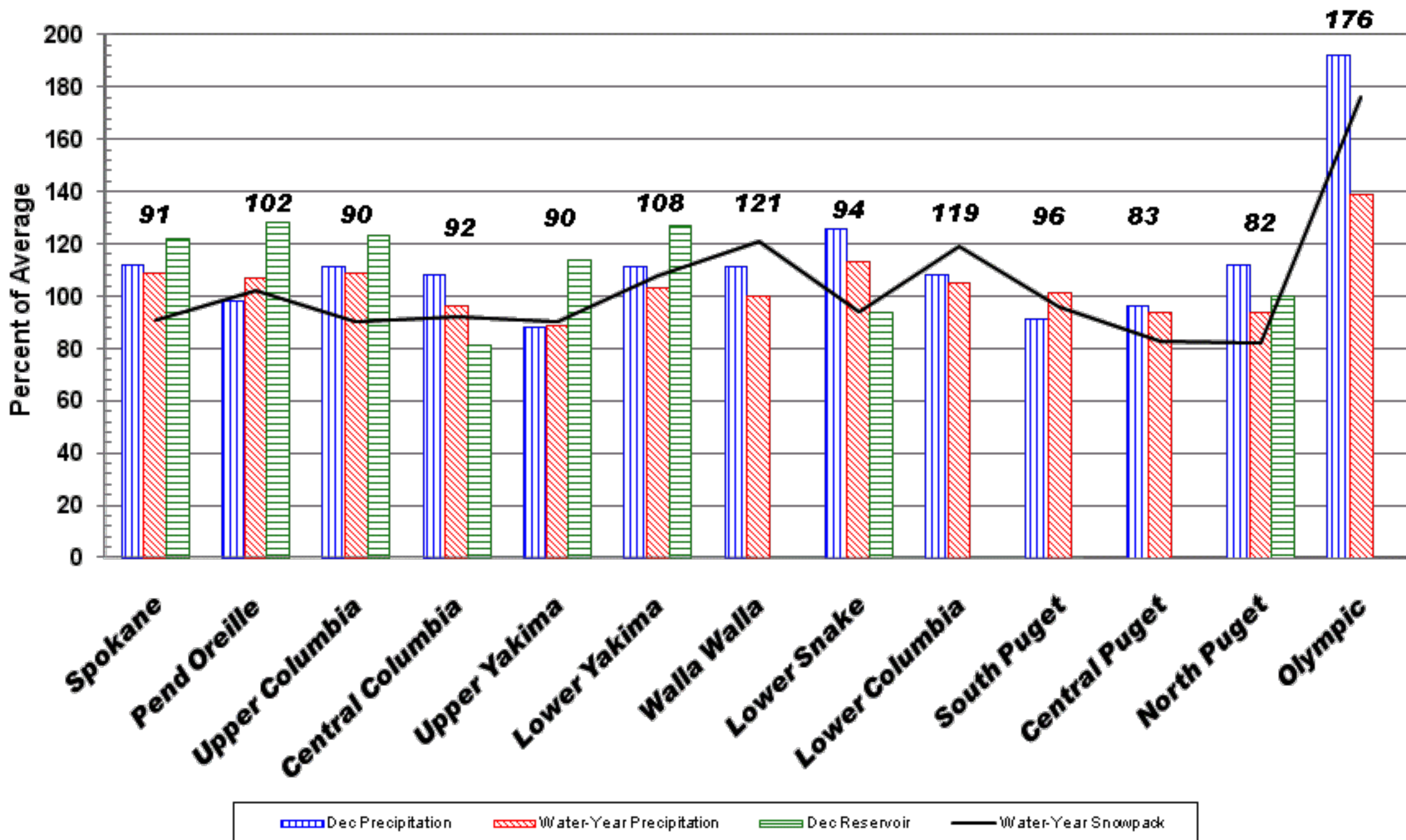


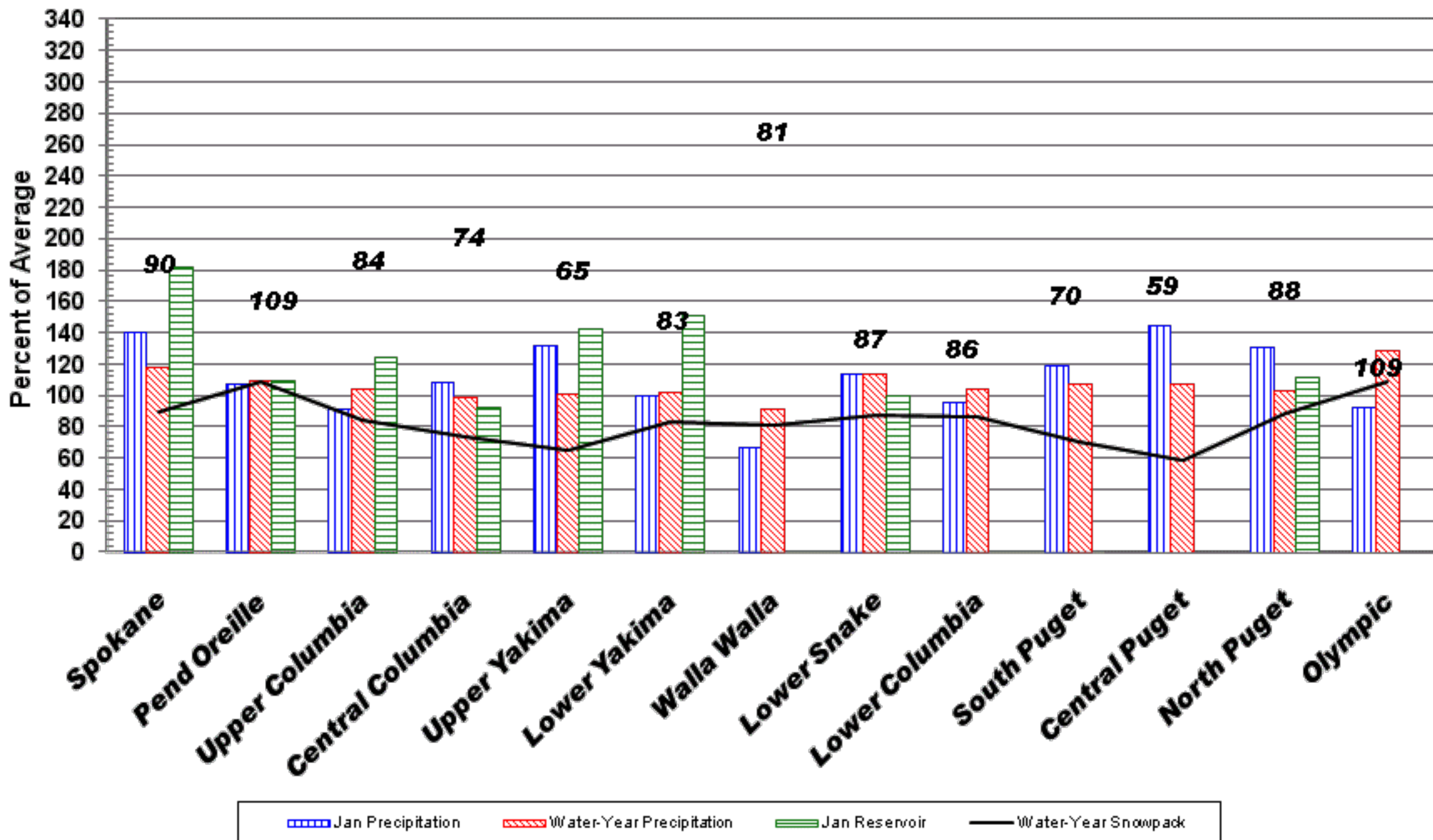
# January 1, 2011 - Snowpack, Precipitation and Reservoir Conditions at a Glance

(Water Year = October 1, 2010 - Current Date)



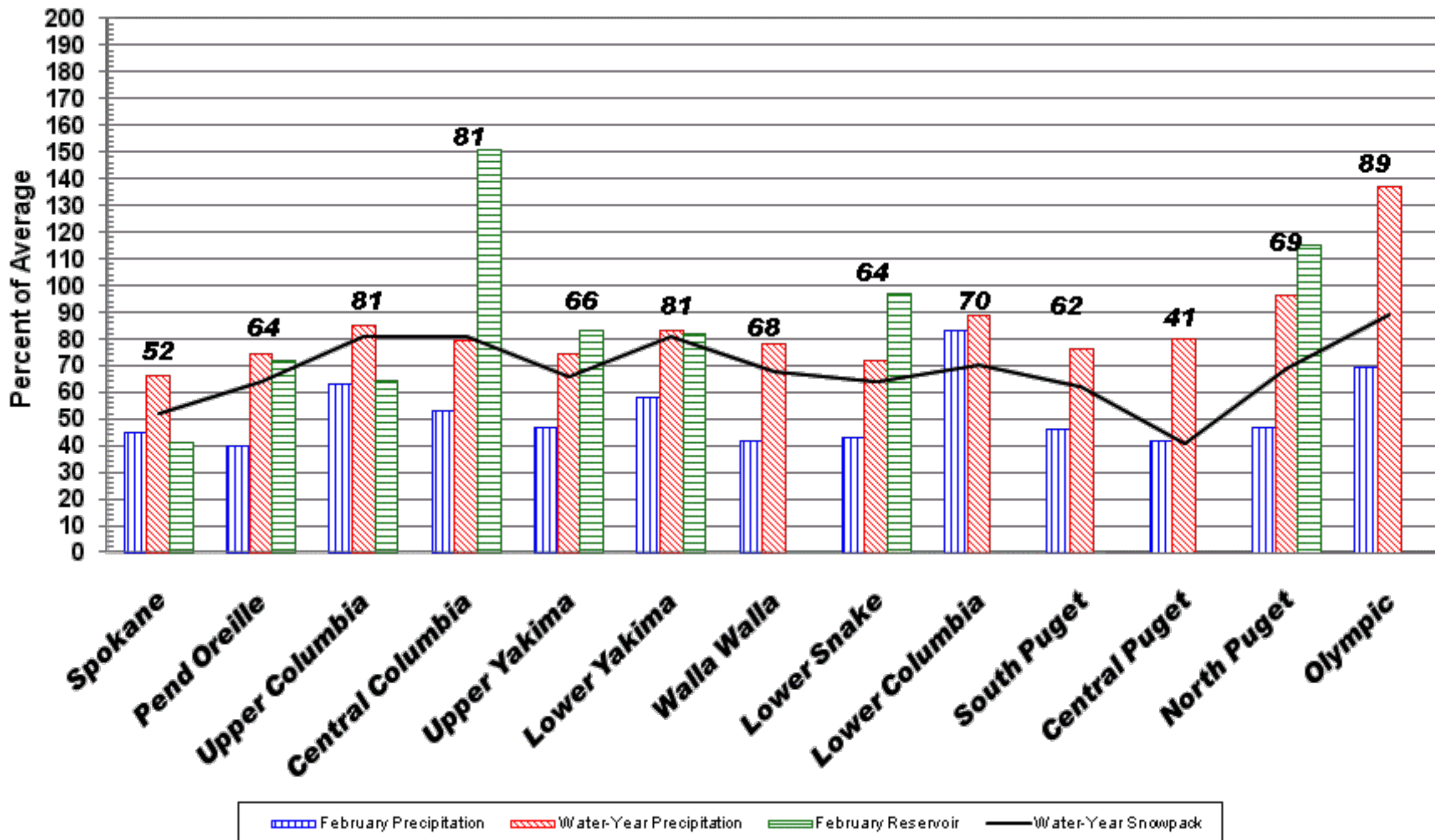
# February 1, 2011 - Snowpack, Precipitation and Reservoir Conditions at a Glance

(Water Year = October 1, 2010 - Current Date)



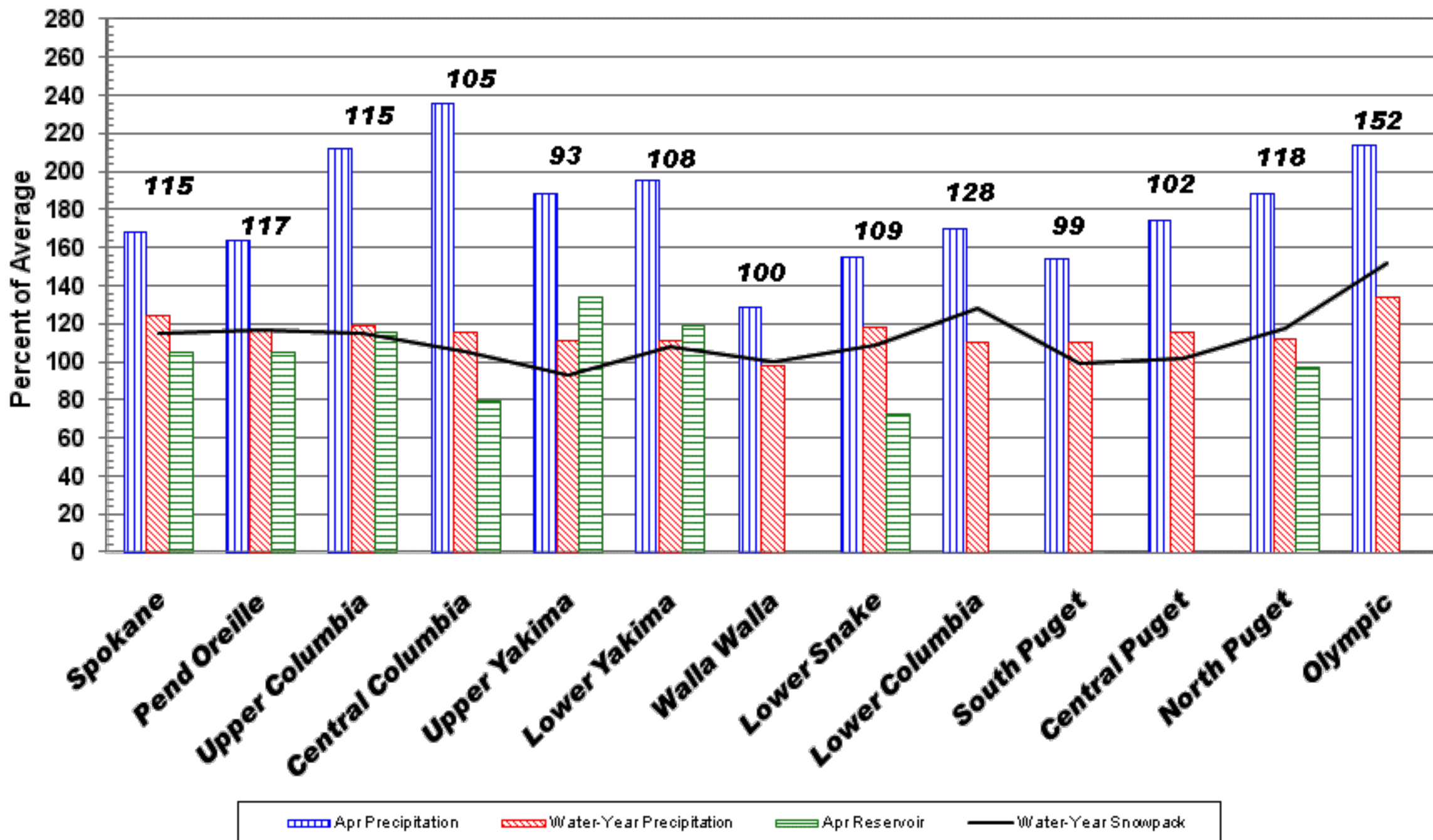
# March 1, 2010 - Snowpack, Precipitation and Reservoir Conditions at a Glance

(Water Year = October 1, 2009 - Current Date)



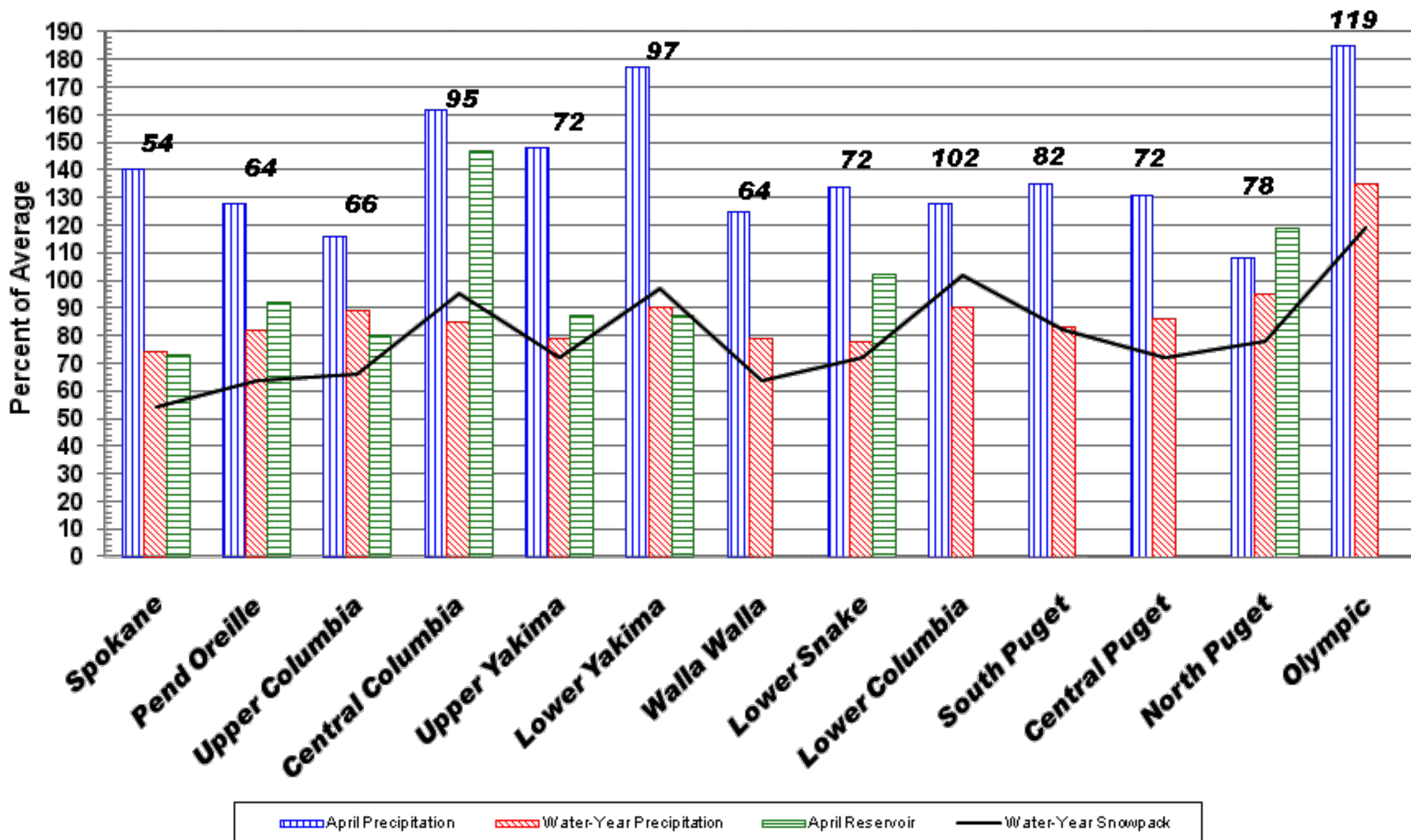
# April 1, 2011 - Snowpack, Precipitation and Reservoir Conditions at a Glance

(Water Year = October 1, 2010 - Current Date)



# May 1, 2010 - Snowpack, Precipitation and Reservoir Conditions at a Glance

(Water Year = October 1, 2009 - Current Date)





# June 1, 2011 - Snowpack, Precipitation and Reservoir Conditions at a Glance

(Water Year = October 1, 2010 - Current Date)

